



2016 E - CLASS

SEDAN/WAGON



E



Mercedes-Benz

SHINING EXAMPLE

*YEAR AFTER YEAR, EX-CLASS INNOVATION PREVEWS WHAT OTHER
CARS MIGHT BE IN THE FUTURE – BY DOING IT FOR YOU TODAY.*



SIX MODELS, ALL ROLE MODELS

For half a century, the E-Class has done one thing above all: It's driven the future of driving. First, it reinvented the luxury car as a nimble yet roomy sport sedan. To that, it added flexible space for people and cargo, and created a new kind of wagon. Over nine generations, it's repeatedly set the standard for safety, the pace of performance, and the example for efficiency. Year after year, the E-Class shines the way to the future, so that all cars may someday follow. Wrapping groundbreaking features in breathtaking style, it inspires its driver like no other car: By making that someday today.





PRACTICALLY PERFECT

*TRUE STYLE DOESN'T CHASE TRENDS. MAYBE
THAT'S WHY THE E-CLASS KEEPS STARTING THEM.*



THE FINE ART OF ENGINEERING

Like many artists, they sketch in charcoal and sculpt in clay. But before it reaches the eyes of the public, the auto designer's work must also endure wind tunnels and crash halls. And to be a Mercedes-Benz, an E-Class must catch your eye, earn your admiration, and maintain your affection for years to come. What matters most is how well its design works from within—making you feel secure, comfortable and confident. And inspiring you to take one more glance before you turn off the garage light. The way you see your E-Class comes from how it makes you feel.

*TIME
WELL
SPENT*

*IMPECCABLY STITCHED, HAND-FITTED
UPHOLSTERY AND HAND-POLISHED WOOD
CONCEAL A CORE OF NATURAL MATERIALS
CHOSEN TO SUSTAIN YOUR WELL-BEING.*





TAILORED TO FIT

Distinctively individual as they may be, none of your senses works alone. Any foodie, art lover or fashion guru knows this. It's how the muted sheen and flawless fit of E-Class upholstery tell you it's supple and supportive, even before you feel it. It's how the positive precision of each control relays the entire car's reassuring solidity. And it's how multicolor ambient lighting can put you and your passengers at ease as effectively as the double-filtered cabin air.

CRAFTED TO ENDURE

Beneath every exactly fitted, painstakingly finished surface of an E-Class is a tradition of craftsmanship generations deep. Even the most modern offerings—like matte Open-pore Brown Ash wood or *designo* Natural Bamboo—are crafted with a high degree of handwork. This is also true for the upholstery, from the uncannily leatherlike feel and legendary quality of MB-Tex, to the superlative softness of hand-matched *designo* Nappa leather. The true beauty of an E-Class, however, might be concealed under its sensuous surfaces. Steam-expanded foams—a process pioneered by Mercedes-Benz in the 1990s—eliminate harmful chemicals from the cabin and its manufacture. And supporting the seats, door trim and other elements are natural products from flax, coconut and olives. The E-Class has been caring for the earth—and its occupants—since long before it was fashionable. But look how fashionable it is.

THRUST FOR LIFE

*THERE'S A HUNGER FOR PERFORMANCE IN EACH
OF US. AN E-CLASS SATISFIES IT IN MANY WAYS.*



MOTIVATION IN MOTION

Rocketeers make rockets. Engineers make engines—the heart of an automobile—and so much more. Mercedes-Benz engineers make dreams you can drive. Ever since Carl Benz patented the first car, they've continued to advance the state of the art of the automobile—with the first winning racecar, first all-wheel drive, first diesel, and first fully independent suspension. And after they invent, they reinvent: Direct fuel injection, clean diesel, the multilink suspension, and on and on. What you feel in an E-Class is more than a rush of power. It's the acceleration of progress.



HANDCRAFTED BY RACERS

MERCEDES-AMG IS NO MERE SPONSOR OF RACING. AMG IS PEOPLE WHO DEVELOP, BUILD AND RACE RACECARS. AND THEY WIN. THEN THEY DEVELOP AND CRAFT HIGH-PERFORMANCE STREET CARS. AND YOU WIN.



"One man, one engine" is more than a motto for AMG. It's a guiding philosophy and a process rooted in racing, where precision and endurance are proven in record time. The heart of a Mercedes-AMG E 63 S is its 577-hp biturbo V-8. Each one is crafted by the hands of its own master engine builder, who visually inspects and records every component, and computer-verifies each torque spec. Only after the V-8 is individually bench-tested does it earn his signature—on a metal plaque that he affixes atop the engine. This degree of detail-obsession is evident throughout this super-sedan and wonder-wagon—from their mighty braking hardware to their meticulously hand-fitted Nappa leather upholstery.

It takes more than a stampede of horsepower to make the quickest sedan in its class—and the fastest wagon on the planet. Thanks to AMG Performance 4MATIC® all-wheel drive, an E 63 S converts torque into traction brilliantly. Its 33:67 front/rear torque split joins forces with the 7-speed multi-clutch AMG SPEEDSHIFT® transmission, a Torque Vectoring Brake feature, and multistage ESP® with a Sport handling mode. Together they ideally transfer power to the pavement at launch and when powering out of corners. So along with class-leading 0–60 acceleration (3.5 seconds for the Sedan, 3.6 for the Wagon¹), they preserve the legendary agility that AMG drivers have cherished on road and track for decades.



AMG
DRIVING PERFORMANCE

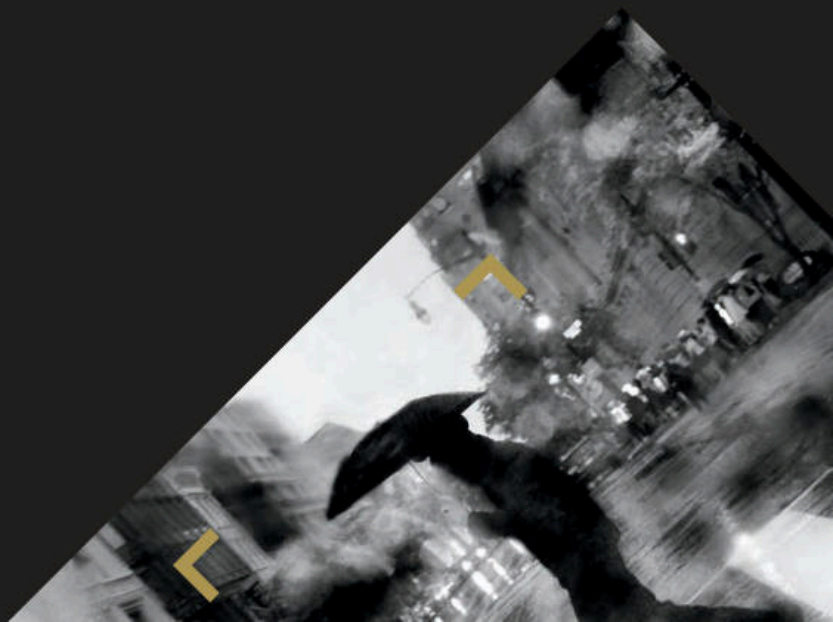


SAFETY FIRST AND FOR ALL

WHEN SECONDS MATTER MOST, SO DO FIRSTS. IT'S WHY MERCEDES-BENZ ENGINEERS KEEP THINKING UP NEW WAYS TO MAKE EVERY CAR SAFER.

Every effort of Mercedes-Benz safety engineers goes toward a singular goal: accident-free driving. They're also keenly aware that achieving this goal only for the vehicles they design would be pointless. The roads can only be safe for someone when they're safe for everyone. The 1951 patent for the first crumple zone is one of more than 88,000 that Mercedes-Benz has earned in the past 130 years. Energy-absorbing front and rear deformation zones flank a reinforced "safety cell" for the passengers. But the idea did more than better protect the occupants of a Mercedes-Benz. It eventually became the way all automobiles are made, thereby helping protect everyone on the road better. Over the decades, countless breakthroughs that were

pioneered under the Three-Pointed Star have gone on to become the safety standards for all automobiles—like the Antilock Braking System (ABS), the Electronic Stability Program (ESP®), emergency-sensing Brake Assist (BAS®), the seat-belt Emergency Tensioning Device (ETD), and side curtain air bags. For many of these inventions, Mercedes-Benz has chosen not to enforce their patents—since some things are too important not to share. As a result, you can expect to see some of the groundbreaking advancements of today's Mercedes-Benz on other cars in a few years. That said, sometimes the future is only milliseconds ahead of you. And nobody prepares you for it like the engineers who've spent decades thinking about it.



IMMINENT DOMAIN

SEEING THE FUTURE ISN'T NEARLY AS IMPORTANT AS PREDICTING YOURS – ESPECIALLY THE PART THAT'S JUST SECONDS AHEAD. WITH INTELLIGENT DRIVE, A 360° NETWORK OF CAMERAS, RADAR AND OTHER SENSORS CAN SEE MORE THAN THE HUMAN EYE, TO HELP YOU GET OUT OF DANGER BEFORE YOU'RE IN IT.

COLLISION PREVENTION ASSIST PLUS

Radar-based technology alerts you if you're following a vehicle too quickly or too closely. As soon as you start to brake, Adaptive Brake Assist automatically adjusts the braking to an ideal level, to help prevent a collision or reduce its severity. The system can apply the brakes autonomously from speeds up to 65 mph.² It can also activate PRE-SAFE[®], the predictive system that can tighten the front seat belts and close the windows in the moments before a collision.³

ATTENTION ASSIST

By continuously monitoring as many as 70 parameters of driving behavior, ATTENTION ASSIST[®] can alert you both visually and audibly if it detects signs of driver-drowsiness on long trips. Its enhanced sensitivity helps the system detect drivers who begin their trip drowsy. A display in the gauge cluster can help you track your own attention level and driving time along your journey.⁴

ACTIVE LANE KEEPING ASSIST

By monitoring visible road markings at speeds above 37 mph, Active Lane Keeping Assist helps detect unintended drifting off-course, and alerts you by vibrating the steering wheel. If you continue to drift, it can selectively brake individual wheels to help guide the car back into its lane. It can also help detect and alert you to overtaking vehicles, vehicles you'll need to overtake if you change lanes, and even oncoming traffic in the adjacent lane.⁴

ACTIVE BLIND SPOT ASSIST

When driving above 20 mph, radar technology helps sense when a vehicle enters the blind-spot area on either side of you, and alerts you by illuminating an icon in the side mirror. A warning tone sounds if you activate a turn signal while a vehicle is detected. And if you begin to change lanes, advanced active technology can help guide the car back by applying the brakes on one side.⁵



DISTRONIC PLUS WITH STEERING ASSIST

Radar-based cruise control adapts your set speed to the flow of traffic ahead, automatically slowing until your path is clear again. If the vehicle ahead slows to a stop, DISTRONIC PLUS[®] can brake to a full halt. When traffic moves, you can resume with just a tap, or automatically if the stop is under a second. The Steering Assist feature helps the driver keep the vehicle centered in between the lane markings while cruising on straight roads, or even in gentle curves.⁶

PRE-SAFE BRAKE WITH PEDESTRIAN RECOGNITION

PRE-SAFE Brake can help detect an impending collision and automatically apply up to 100% braking force to help reduce the severity of impact. At speeds up to approximately 35 mph, it can also help detect if pedestrians have entered in your path and automatically apply the brakes.⁷ The features are active whether using the cruise control functions of DISTRONIC PLUS or not.

BRAKE ASSIST PLUS WITH CROSS-TRAFFIC ASSIST

BAS[®] PLUS uses radar sensors to scan the road ahead at driving speeds up to approximately 45 mph. Cross-Traffic Assist uses radar plus advanced cameras to help detect a potential collision with vehicles approaching from either side of an intersection ahead, or with pedestrians in the car's path. When the driver responds to the system's alert by braking, Brake Assist PLUS precisely applies the maximum braking force required to help prevent such an accident.⁷

PARKTRONIC WITH ACTIVE PARKING ASSIST

As you drive by open parking spaces, sensors help you size them up. When you decide to back into one, it can expertly steer and brake for you—and steer you back out later. In any low-speed maneuver, PARKTRONIC's ultrasonic sensors in the bumpers help detect nearby objects within its field of view. Audible and visual indicators in the cabin help you navigate tight spaces with confidence.

HIGHER DEFINITION

LIFE'S FINER MOMENTS COME FROM THE FINEST ATTENTION TO EVERY DETAIL.



PIXELS, PARTICLES AND PRIORITIES

Two crisp screens keep you informed, not just with vivid colors but with intuitive, illustrated displays. Two types of filtration help sweep dust particles, pollen and even odors from the cabin air. Three colors of fiber-optic LED ambient lighting can soothe or stimulate your senses. There's extra detail in every detail of an E-Class – all to bring you a higher order of enjoyment. Luxury has many definitions. What matters most is what it means to you.



HIGH TECH, HUMAN TOUCH

An E-Class might offer features you've never seen before. Odds are, they'll soon be favorites you can't imagine doing without, thanks to their intuitive controls and thoughtful details. The navigation can be operated not just by voice, but by your voice—learning the way you speak.⁸ The Surround View System can compose four cameras into a single birdseye view, to show you what's around you on the in-dash screen.⁹

Heated seats automatically step down their intensity—twice—to keep you cozy, not cooked.

To make driving at night or in a dark tunnel more comforting, the ambient lighting instantly defines the cabin space and door handles—in your choice of three hues. Even the drive-mode controls in an AMG E 63 S make it easy to dial in the car's performance—by feel, on the go.

Technology shouldn't push you into the future. The user-friendly E-Class delivers it to you.



TO BRING YOU IDEAS YOU NEVER IMAGINED, AND MAKE THEM FEEL INSTANTLY FAMILIAR, MERCEDES-BENZ ENGINEERS STAY TRUE TO A SIMPLE BELIEF: TECHNOLOGY IS SUPPOSED TO MAKE LIFE EASIER.

INSIDER KNOWLEDGE



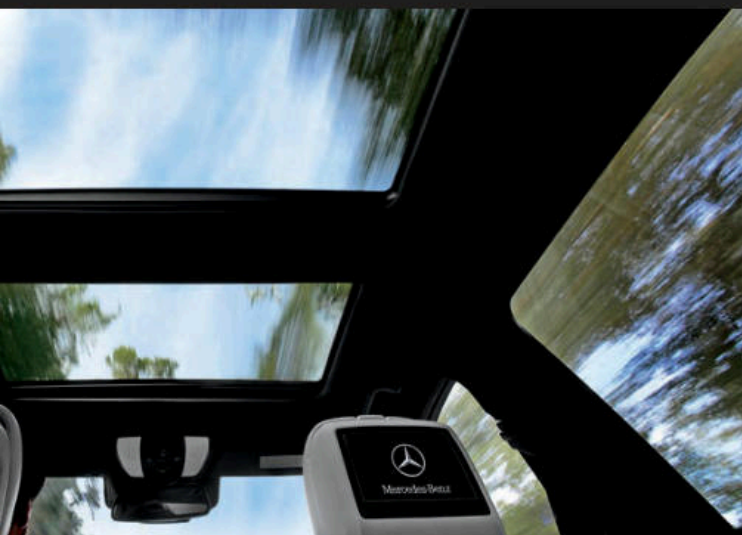
*IN THE SEDAN OR WAGON, ON YOUR DAILY COMMUTE
OR THE ANNUAL ROAD TRIP, THE VERSATILE E-CLASS
CABIN ADAPTS TO FIT YOUR LIFE. IT CAN MAKE THE
MILES SEEM SHORTER, OR EVERY INCH FEEL LARGER.*

RADICAL CONFORMIST





Take a seat in an E-Class, and chances are, you'll wish you could take it with you when you arrive. They're supportive and sumptuous, and embracing yet expansive. The front seats can offer you soothing heat and cooling ventilation. There's even a driver seat that can give you a rejuvenating massage. It'll also hold you tighter whenever the car's hugging the corners. The second row also offers first-rate features, like a Rear Seat Entertainment option that turns it into a mobile theater and game room. When it needs to become cargo room,¹⁰ there are easy-folding seatbacks. They're even available in the sedan—along with an accessory trunk box that keeps smaller items in check, or retracts with a gentle push. And in an E 350 Wagon, there's a third row of seats. If the idea of versatility seems too radical for a refined automobile like the E-Class, just think of it as the luxury of spontaneity.



TOGETHER WHEREVER

IT'S PERFECTLY NATURAL TO DEVELOP AN EMOTIONAL ATTACHMENT TO YOUR MERCEDES-BENZ. WITH MBRACE, ENJOYING A TECHNOLOGICAL CONNECTION IS JUST AS EASY.

With Mercedes-Benz mbrace,[®] your car is only a click away. Five years of mbrace Connect benefits and services¹¹ come standard with every new 2016 Mercedes-Benz, providing you with remote access to your vehicle from your smartphone or computer. With the mbrace Mobile App,¹² you can lock, unlock and locate your car—and more—from your phone. You can access Google and Yelp from your car with an ever-evolving variety of in-vehicle apps. You can send destinations to your car's available COMAND[®] navigation system from your computer or phone. Even your car can reach out, with remote diagnostics and a direct connection to Mercedes-Benz Roadside Assistance.¹³ Three additional packages bring you even more connections—from added safety and security, to a personal concierge, to streaming music and in-car WiFi for you and your friends. With mbrace, your Mercedes-Benz helps you stay connected not just to your car, but to your world—from anywhere you are, and wherever tomorrow takes you.

mbrace Connect

5 years included

State-of-the-art convenience with remote vehicle access, in-vehicle apps and over-the-air updates

Package includes:

- mbrace Mobile App for Android or iPhone
- Remote lock/unlock and other vehicle features via Mobile App
- Access to mbrace Web services at mbrace.MBUSA.com
- Remote diagnostics with direct dealer connection
- Over-the-air updates of many mbrace features and apps
- An evolving selection of Mercedes-Benz Apps, such as:
 - Google[™] Local Search
 - Yelp
 - Fuel station finder with prices
 - Weather reports locally and around the world
 - Airport flight status
 - Local movie theater showtimes
- Valet Protect
- Viewable traffic cams in many metro markets

mbrace Secure

6-month trial included
Requires mbrace Connect

Added peace of mind from safety and security features for you, your family, and your vehicle

Package includes:

- Automatic Collision Notification
- Emergency calling from your car's SOS button or the Mobile App
- Automatic Alarm Notification
- Stolen vehicle location assistance
- Agent-assisted remote locking and unlocking
- Dealer connect

mbrace Concierge

3-month trial included
Requires mbrace Secure

Personal assistance from highly knowledgeable professionals with access to a world of resources

Package includes:

- Personal concierges to help you stay more productive on the road, or from the Mobile App on your smartphone
- Expert recommendations and reservations for dining out, and for tickets to events
- Turn-by-turn directions from a live assistant or sent to your car
- Travel assistance, including reservations and changes for hotels, airlines and car rentals
- Answers to most any question, help with most any request

mbrace Entertain

3-month trial included
Requires mbrace Secure

Online, on-the-road enjoyment from streaming entertainment to maps, along with in-car WiFi

Package includes:

- Streaming audio and data via widely available 3G coverage
- In-car WiFi with secure connection of up to four devices
- Online maps, powered by Google
- A selection of streaming audio apps, including:
 - Tuneln[®] radio
 - iHeart Radio[®] Available starting Fall 2015
 - Mercedes-Benz Radio



CAR IN YOUR POCKET

The mbrace Mobile App on your iPhone or Android phone includes a number of remote vehicle controls among its many useful features. You can lock and unlock the doors from any distance. Locate your car on a map. Or flash its lights and sound the horn. You can even look up an address, and send it directly to your car's COMAND navigation system.



OUR WORLD IS YOURS

The online world of Mercedes-Benz is one of many ways you can enjoy being part of the family. You can keep up to date with news and events, or take in an entertaining film. You can get more from your vehicle with helpful tutorial videos and downloadable manuals. And you can check out photos from other Mercedes-Benz drivers and fans, and best of all, share yours as well.



BUILD YOUR OWN

MBUSA.com/E

<i>Specifications</i>		E 250 BlueTEC ¹⁴ Sport and Luxury Sedans	E 350 Sport and Luxury Sedans and Wagons	E 400 Sport Sedan	AMG E 63 S Sedan and Wagon
Engine	Type	2.1-liter twin-turbo clean diesel inline-4	3.5-liter Direct Injection gasoline V-6	3.0-liter biturbo Direct Injection gasoline V-6	Handcrafted AMG 5.5-liter biturbo Direct Injection gasoline V-8
	Power	195 hp @ 3,800 rpm	302 hp @ 6,500 rpm	329 hp @ 5,250-6,000 rpm	577 hp @ 5,500 rpm
	Torque	369 lb-ft @ 1,600-1,800 rpm	273 lb-ft @ 3,500-5,250 rpm	354 lb-ft @ 1,600-4,000 rpm	590 lb-ft @ 2,000-4,000 rpm
Transmission		7-speed automatic with shift paddles	7-speed automatic with shift paddles	7-speed automatic with shift paddles	7-speed AMG SPEEDSHIFT [®] MCT with shift paddles
Acceleration, 0-60 mph¹	Sedan	7.9 sec (4MATIC: 8.2 sec)	6.5 sec (4MATIC: 6.6 sec)	5.6 sec (4MATIC: 5.6 sec)	3.5 sec
	Wagon	—	6.9 sec	—	3.6 sec
Wheels	Sport	17" twin 5-spoke with Extended Mobility tires ¹⁵	18" twin 5-spoke ¹⁶ (Sedan) 17" twin 5-spoke (Wagon)	18" AMG [®] twin 5-spoke ¹⁶	Staggered-width 19" AMG 10-spoke ¹⁶
	Luxury	17" 5-spoke with Extended Mobility tires ¹⁵	17" 5-spoke	—	—
Suspension	Sport	Sport-tuned multilink	Sport-tuned multilink	Sport-tuned multilink	AMG Adaptive Sport Suspension
	Luxury	Comfort-tuned multilink	Comfort-tuned multilink	—	—
	Rear air suspension	—	Standard (Wagon)	—	Standard AMG-calibrated
Drivetrain		Rear-wheel drive or 4MATIC [®] all-wheel drive	Rear-wheel drive (Sedan) or 4MATIC all-wheel drive	Rear-wheel drive or 4MATIC all-wheel drive	AMG Performance 4MATIC all-wheel drive

<i>Dimensions</i>	Sport and Luxury Sedans	AMG E 63 S Sedan	E 350 Wagons	AMG E 63 S Wagon
Wheelbase	113.1"	113.1"	113.1"	113.1"
Overall length	192.1"	192.9"	193.1"	193.4"
Overall height	57.9"	56.8"	58.9" (w/roof rails)	57.8" (w/roof rails)
Overall width	81.5" (w/mirrors)	81.5" (w/mirrors)	81.5" (w/mirrors)	81.5" (w/mirrors)
Curb weight (RWD/4MATIC)	BlueTEC: 4,167 / 4,365 lbs E 350: 4,001 / 4,211 lbs E 400: 4,112 / 4,277 lbs	4,276 lbs	4,431 lbs	4,619 lbs
Headroom (1st/2nd row)	37.9" / 38.2"	37.9" / 38.2"	38.3" / 39.8"	38.3" / 39.8"
Legroom (1st/2nd row)	41.3" / 35.8"	41.3" / 35.8"	41.3" / 36.0"	41.3" / 36.0"
Shoulder room (1st/2nd row)	57.8" / 56.9"	57.8" / 56.9"	57.8" / 56.8"	57.8" / 56.8"
Cargo capacity	12.9 cu ft	12.9 cu ft	20.5 cu ft (behind 2nd row, floor to ceiling) 57.4 cu ft (2nd/3rd rows folded, floor to ceiling)	



E 250 BlueTEC Sedans
 E 350 Sedans
 E 350 Wagons
 E 400 Sedans
 AMG E 63 S Sedan
 AMG E 63 S Wagon

Performance and efficiency

- ● ● ● ● ● ECO Start/Stop system
- ○ ● ○ — — 4MATIC all-wheel drive
- — — — ● ● AMG Performance 4MATIC all-wheel drive
- — — — ● ● AMG limited-slip differential

Safety and security

- ● ● ● ● ● COLLISION PREVENTION ASSIST PLUS
- ● ● ● ● ● ATTENTION ASSIST®
- ● ● ● ● ● PRE-SAFE®
- ● ● ● ● ● Electronic Stability Program (ESP®)
- ● ● ● ● ● Adaptive braking technology: Predictive Brake Priming, Automatic Brake Drying, Hill-Start Assist, and Brake HOLD feature
- ● ● ● ● ● Emergency-sensing Brake Assist (BAS®)
- ● ● ● ● ● Advanced Tire Pressure Monitoring System
- ○ ○ ● ○ ○ Blind Spot Assist
- ○ ○ ● ○ ○ Lane Keeping Assist
- ○ ○ ○ ● ● PARKTRONIC with Active Parking Assist
- ○ ● ● ● ● Rearview camera*
- ● ● ● ● ● 11-way air bag protection
- ● ● ● ● ● NECK-PRO® front head restraints
- ● ● ● ● ● LED Daytime Running Lamps
- ● ● ● — — LED low-beam headlamps
- ○ ○ ○ ● ● Active full-LED headlamps
- ● ● ● ● ● Full-LED taillamps
- ● ● ● ● ● SmartKey remote locking and starting system
- ○ ○ ● ● ● KEYLESS-GO®
- — ● — — ● Power liftgate
- ○ ○ ○ ● ● Electronic trunk closer w/HANDS-FREE ACCESS
- ● ● ● ● ● Antitheft alarm system with remote panic feature

● Standard ○ Optional — Not available

KEY STANDARD FEATURES

E 250 BlueTEC Sedans
 E 350 Sedans
 E 350 Wagons
 E 400 Sedans
 AMG E 63 S Sedan
 AMG E 63 S Wagon

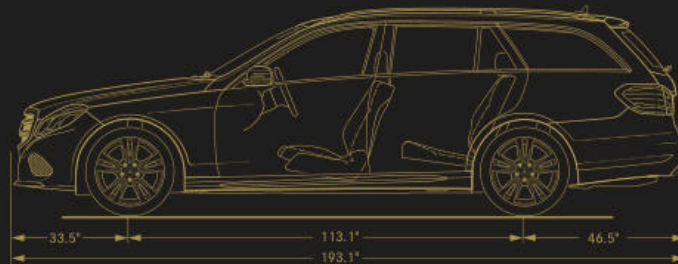
Comfort and convenience

- ● ● ● ● ● 14-way power front seats with memory
- ○ ○ ● ● ● Heated front seats
- ○ ○ ● ● ● Ventilated front seats
- ○ ○ ● ● ● Split-folding rear seats
- — ● — — Rear-facing third-row seat
- ● ● ● ● ● Power tilt/telescoping steering column
- ● ● ● ● ● Multifunction steering wheel w/Nappa leather trim
- ● ● ● ● ● Dual-zone digital automatic climate control
- ● ● ● ● ● Power tilt/sliding tinted glass sunroof
- ● ● ● ● ● Multicolor ambient lighting
- ○ — ● ● — Power rear-window sunshade
- ● ● ● ● ● Rain-sensing windshield wipers
- — ● — — Rear-window wiper w/auto-on in Reverse
- ○ ○ ● ● ● Power-folding side mirrors
- ● ● ● ● ● Auto-dimming driver-side and inside mirrors

Entertainment and navigation

- ● ● ● ● ● COMAND® system with central controller
- ○ ○ ● ● ● COMAND navigation w/ 80GB hard drive
- ○ ○ ● ● ● SiriusXM Traffic and Weather w/ 5 years of service¹⁷
- ○ ○ ● ● ● Voice control w/learning feature
- ○ ○ ● ● ● No-charge navigation map updates for 3 years
- ○ ○ ● ● ● harman/kardon LOGIC7® sound system
- ● ● ● ● ● Bluetooth® audio streaming
- ● ● ● ● ● USB audio port
- ○ ○ ● ● ● SiriusXM Radio w/6-month All Access trial¹⁷
- ● ● ● ● ● HD Radio™ receiver
- ● ● ● ● ● In-dash DVD/CD player and SD card reader
- ● ● ● ● ● Hands-free Bluetooth interface
- ● ● ● ● ● Mercedes-Benz mbrace®
- ● ● ● ● ● 5 years of mbrace Connect services¹¹

Please see endnotes at back of brochure.





OPTIONS AND ACCESSORIES



Option Packages

	E 250 BlueTEC	E 350	E 400	AMG E 63 S
Premium Package	○	○	●	●
<ul style="list-style-type: none"> • COMAND® navigation with 3 years of map updates • harman/kardon LOGIC7® surround-sound system with Dolby Digital 5.1 • SiriusXM Radio¹⁷ (with 6-month trial of All Access plan) • SiriusXM Traffic and Weather¹⁷ (with 3 years of service) • Voice control with learning feature for audio, telephone and navigation • Heated front seats • Split-folding rear seats <i>Standard on Wagons</i> • Power-folding side mirrors • Power rear-window sunshade <i>Sedans only</i> • Manual rear-side window sunshades <i>Wagons only</i> • Rearview camera⁹ <i>Standard on Wagons</i> 				
Lighting Package	○	○	○	●
<ul style="list-style-type: none"> • Full-LED headlamps with Active Curve Illumination and Adaptive Highbeam Assist • Corner-illuminating front lamps 				
KEYLESS-GO Package	○	○	○	●
<ul style="list-style-type: none"> • KEYLESS-GO® <i>Standard on E 400</i> • Electronic trunk closer <i>Power liftgate standard on Wagons</i> • HANDS-FREE ACCESS 				
Parking Assist Package <i>Availability may be limited</i>	○	○	○	○
<ul style="list-style-type: none"> • Surround View System⁹ • PARKTRONIC w/Active Parking Assist <i>Standard on AMG</i> 				
Lane Tracking Package <i>Requires Premium Package</i>	○	○	●	○
<ul style="list-style-type: none"> • Blind Spot Assist • Lane Keeping Assist 				
Driver Assistance Package	○	○	○	○
<ul style="list-style-type: none"> • DISTRONIC PLUS® with Steering Assist • PRE-SAFE® Brake with Pedestrian Recognition • BAS® PLUS with Cross-Traffic Assist • PRE-SAFE PLUS rear-end collision protection • Active Blind Spot Assist • Active Lane Keeping Assist 				
Night Package Plus <i>Sport models only</i>	○	○	○	—
<ul style="list-style-type: none"> • Gloss Black and black chrome exterior accents • 18" AMG® twin 5-spoke wheels, Black¹⁶ • Exclusive interior in Black leather w/red topstitching, red cabin accents, and sport steering wheel w/red stitching • Red seat belts <i>Black seat belts optional at no charge</i> 				
AMG Night Package	—	—	—	○
<ul style="list-style-type: none"> • Gloss Black side mirror covers • Gloss Black front air dam, rear valence and side sill inserts • Gloss Black rear diffuser with tailpipes in black chrome 				
AMG Exterior Carbon Fiber Package	—	—	—	○
<ul style="list-style-type: none"> • Carbon fiber rear spoiler and side mirror covers • Carbon fiber front air dam, rear valence and side sill inserts 				

● Standard ○ Optional △ No-charge option — Not available

Individual options

	E 250 BlueTEC	E 350	E 400	AMG E 63 S
PARKTRONIC w/Active Parking Assist	○	○	○	●
Panorama roof <i>Standard on AMG E 63 S Wagon</i>	○	○	○	○
Bang & Olufsen® BeoSound™ premium sound system ¹⁹	○	○	○	○
Rear Seat Entertainment system	○	○	○	○
Household-type 115-volt AC power outlet <i>In rear cabin</i>	○	○	○	—
Active multicontour driver seat with massage feature	○	○	○	●
Ventilated front seats <i>Requires Premium Package plus leather or Nappa leather upholstery</i>	○	○	●	●
Heated rear seats	—	—	—	○
3-spoke flat-bottom sport steering wheel ²⁰ <i>Sport models only</i>	—	○	○	—
Heated steering wheel ²⁰ <i>Requires Premium Package</i>	○	○	○	—
Wood/leather steering wheel ²⁰ <i>Luxury models only</i>	○	○	—	—
Wood/leather flat-bottom steering wheel ²⁰ <i>Sport models only</i>	○	○	○	○
AMG Performance steering wheel with DINAMICA side grips	—	—	—	○
17" twin 5-spoke wheels <i>E 250 Sport Sedan and E 350 Sport Wagon only; optional at no charge on E 350 Sport Sedan</i>	●	●	—	—
18" AMG® twin 5-spoke wheels ¹⁶ <i>Availability may be limited</i>	—	○	●	—
19" AMG 10-spoke wheels, Black ¹⁶	—	—	—	○
19" AMG forged-alloy twin 5-spoke wheels ¹⁶	—	—	—	○
Leather upholstery	○	○	●	—
Nappa leather upholstery	○	○	○	●
<i>designo</i> Nappa leather upholstery	○	○	○	○
Black Ash wood trim <i>Sport and AMG models only</i>	△	△	△	●
Burl Walnut wood trim	△	△	△	△
Open-pore Brown Ash wood trim	△	△	△	△
Carbon fiber/Black Piano Lacquer wood trim	—	—	—	○
<i>designo</i> Black Piano Lacquer wood trim	○	○	○	○
<i>designo</i> Natural Bamboo trim	○	○	○	○
<i>designo</i> Natural Curly Maple wood trim	○	○	○	○
Metallic paint	○	○	○	△

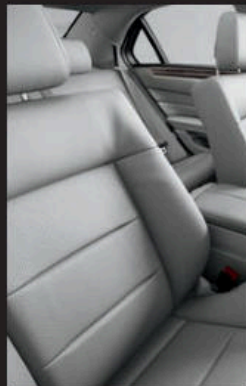
Accessories *Selected items shown at left*

19" twin 5-spoke wheels ¹⁶	○	○	○	—
Illuminated Star <i>N/A w/Driver Assistance Pkg. or on Luxury models</i>	○	○	○	○
Rear spoiler <i>Sedans only</i>	○	○	○	○
Roof spoiler	○	○	○	○
Roof rack basic carrier	○	○	○	○
Ski/snowboard and bicycle racks <i>Requires basic carrier</i>	○	○	○	○
Mercedes-Benz roof boxes <i>3 sizes available; requires basic carrier</i>	○	○	○	○
Comfort box <i>Retractable trunk bin; Sedans only</i>	○	○	○	○
iPad® Docking Station <i>Up to 2 per car, iPad not included</i>	○	○	○	○
Rear Seat Entertainment system	○	○	○	○

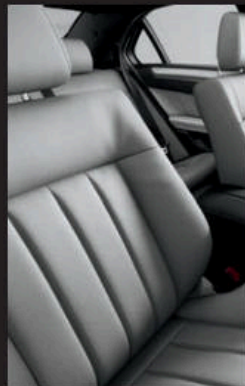
COLOR AND TRIM

● Standard ○ Optional — Not available

UPHOLSTERY STYLES



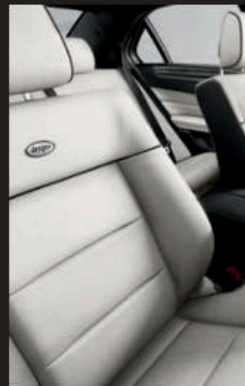
MB-Tex
● Sport and Luxury models



Leather
○ Sport and Luxury models



Nappa leather
○ Sport and Luxury models



designo Nappa leather
○ All models

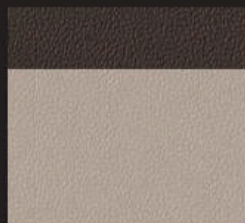


AMG Nappa leather
● AMG models

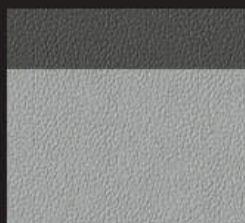
UPHOLSTERY COLORS



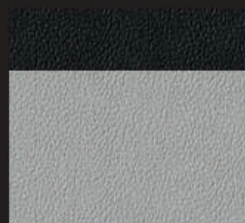
Black
MB-Tex, leather, Nappa
or AMG Nappa leather



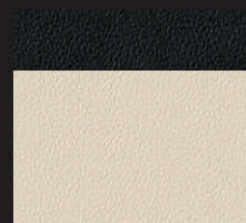
Silk Beige/Espresso
MB-Tex, leather, Nappa
or AMG Nappa leather



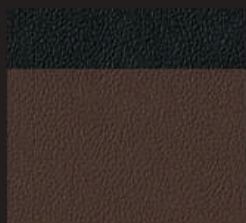
Crystal Grey/Seashell Grey
MB-Tex, leather
or Nappa leather



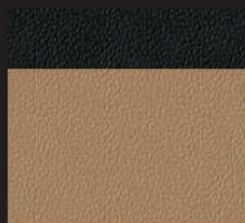
Crystal Grey/Black
MB-Tex, leather, Nappa
or AMG Nappa leather



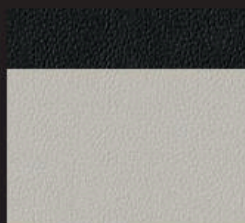
Porcelain/Black
Leather or Nappa leather



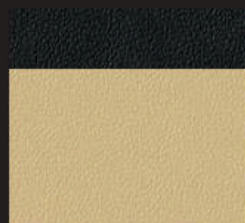
Chestnut Brown/Black
Leather or Nappa leather



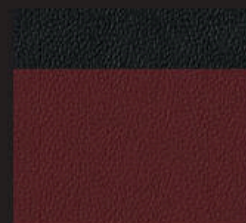
designo Sand
Nappa leather²¹



designo Platinum White
Nappa leather²¹



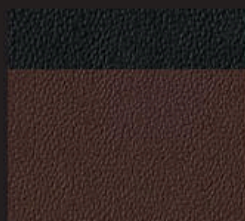
designo Saffron Beige
Nappa leather²¹



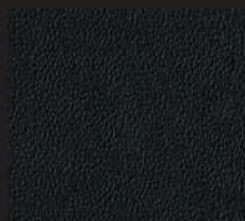
designo Mystic Red
Nappa leather²¹



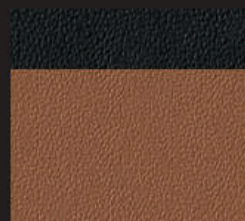
designo Amaretto
Nappa leather²¹



designo Auburn Brown
Nappa leather²¹

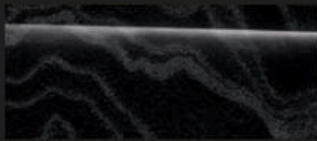


designo Black
Nappa leather²¹



designo Light Brown
Nappa leather²¹

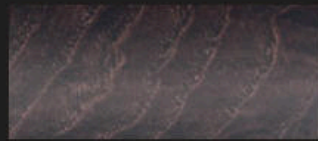
INTERIOR TRIM



Black Ash wood



Burl Walnut wood



Open-pore Brown Ash wood



Carbon fiber (AMG only)



designo Black Piano Lacquer wood²¹

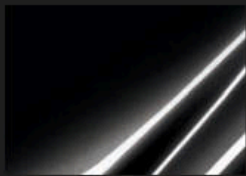


designo Natural Bamboo²¹



designo Natural Curly Maple wood²¹

PAINTWORK



Black



Polar White



Obsidian Black metallic



Iridium Silver metallic



Selenite Grey metallic²²



Lunar Blue metallic



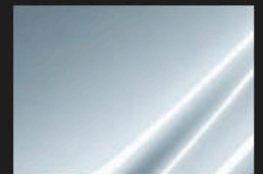
Dolomite Brown metallic



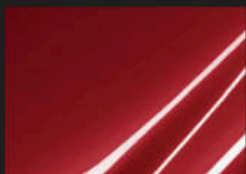
Steel Grey metallic



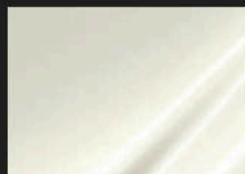
Indigo Blue metallic



Diamond Silver metallic



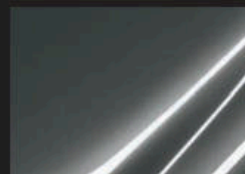
designo Cardinal Red metallic²¹



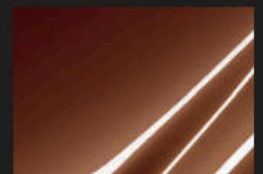
designo Diamond White metallic²¹



designo Mocha Black metallic²¹



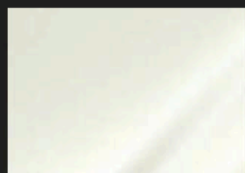
designo Graphite metallic²¹



designo Mystic Brown metallic²¹



designo Magno Alanite Grey (matte)²¹



designo Magno Cashmere White (matte)²¹

SPORT AND LUXURY STYLING



E-Class with Sport styling and Lighting Package
Aggressive bodywork underscores the grille's integrated Star.



E-Class with Luxury styling
The Star stands proud above the classic slatted chrome grille.

WHEEL CHOICES



17" 5-spoke (Luxury)
● E 250 BlueTEC and E 350



17" twin 5-spoke (Sport)
● E 250 BlueTEC, E 350 Wagon
△ E 350 Sedan



18" twin 5-spoke (Sport)
● E 350 Sedan



18" AMG twin 5-spoke (Sport)
● E 400 Sedan
○ E 350 Sedan, E 350 Wagon



18" AMG twin 5-spoke (Black)
○ Night Package Plus



19" AMG 10-spoke (Titanium)
● AMG E 63 S Sedan and Wagon



19" AMG 10-spoke (Black)
○ AMG E 63 S Sedan and Wagon



19" AMG forged twin 5-spoke
○ AMG E 63 S Sedan and Wagon

©2015 Mercedes-Benz USA, LLC • One Mercedes Drive, Montvale, NJ 07645 • 1-800-FOR-MERCEDES • MBUSA.com

Marketing Communications. All illustrations and specifications contained in this brochure are based on the latest product information available at the time of publication. Mercedes-Benz reserves the right to make changes at any time, without notice, to colors, materials, equipment, specifications and models. Any variations in colors shown are due to reproduction variations of the printing process. Illustrations may include test situations. Some vehicles may be shown with non-U.S. equipment. Some vehicles are shown with optional equipment. iPad, iPhone and iPod are registered trademarks or service marks of Apple Inc. Bluetooth is a registered trademark of Bluetooth SIG, Inc. Android and Google Maps are registered trademarks of Google Inc. harman/kardon and LOGIC7 are registered trademarks of Harman International Industries, Inc. HD Radio is a proprietary trademark of iBiquity Digital Corporation. Sirius, XM and all related marks and logos are trademarks of Sirius XM Radio Inc. TuneIn is a registered service mark of TuneIn, Inc. Twitter is a registered trademark of Twitter, Inc. Yelp is a registered trademark of Yelp Inc.

ENDNOTES

1. Stated rates of acceleration are estimated based upon manufacturer's track results and may vary depending on model, environmental and road surface conditions, driving style, elevation and vehicle load.
2. COLLISION PREVENTION ASSIST PLUS may not be sufficient to avoid an accident. It does not react to certain stationary objects, nor recognize or predict the curvature and/or lane layout of the road or every movement of vehicles ahead. It is the driver's responsibility at all times to be attentive to traffic and road conditions, and to provide the steering, braking and other driving inputs necessary to retain control of the vehicle. Drivers are cautioned not to wait for the system's alerts before braking, as that may not afford sufficient time and distance to brake safely. Autonomous braking is available at speeds between approximately 5 and 65 mph for moving vehicles, or 5 and 31 mph for stationary objects.
3. PRE-SAFE® closes the side windows when the system's sensors detect side movements that suggest a possible rollover or side impact. A small gap is left near the fully closed position.
4. Driving while drowsy or distracted is dangerous and must be avoided. ATTENTION ASSIST™ and/or Lane Keeping Assist may be insufficient to alert a fatigued or distracted driver of lane drift and cannot be relied on to avoid an accident or serious injury. Lane Keeping Assist operates at speeds above approximately 37 mph.
5. Blind Spot Assist may not be sufficient to avoid all accidents involving vehicles in your blind spot and does not estimate the speed of approaching vehicles. It must not be used as a sole substitute for driver awareness and checking of surrounding traffic conditions. Blind Spot Assist operates at speeds above approximately 20 mph.
6. DISTRONIC PLUS® adaptive cruise control is no substitute for active driving involvement. It does not adapt cruising speed in response to stationary objects, nor does it predict the curvature and lane layout of the road ahead or the movement of vehicles ahead. It is the driver's responsibility at all times to be attentive to traffic and road conditions, and to provide the steering, braking and other driving inputs necessary to retain control of the vehicle. Drivers are cautioned not to wait for the DISTRONIC Proximity Warning System before braking, as that may not afford sufficient time and distance to brake safely.
7. Braking effectiveness also depends on proper brake maintenance, and tire and road conditions.
8. While the navigation system provides directional assistance, the driver must remain focused on safe driving behavior, including paying attention to traffic and street signs. The driver should utilize the system's audio cues while driving and should only consult the map or visual displays once the vehicle has been stopped in a safe place. Maps do not cover all areas or all routes within an area.
9. Rearview camera and Surround View System do not audibly notify driver of nearby objects and are not a substitute for actively checking around the vehicle for any obstacles or people. Images displayed may be limited by camera field of view, weather, lighting conditions and the presence of dirt, ice or snow on the cameras. Availability of Parking Assist Package is limited. Please see your dealer.
10. Unsecured cargo can become hazardous in a collision. Always secure cargo using the floor-mounted tie-downs.
11. All Mercedes-Benz mbrace® services operate only where cellular and Global Positioning System satellite signals are available, which are provided by third parties and not within the control of Mercedes-Benz USA, LLC. Five years of the mbrace Connect package are included, starting on the original retail sale or lease date from an authorized Mercedes-Benz dealer. Subscriber Agreement is required for service to be active. Some services are only available on select vehicles. Your PIN is required in order to use certain services. Some services may be limited or restricted in some areas. Apps may be introduced, updated or removed at varying dates, and may also require a vehicle software update. Driver is responsible for complying with traffic and other laws. See your dealer or MBUSA.com/mbrace for details, including a list of compatible smartphones. Streaming Internet-based features require an active subscription to the mbrace Mercedes-Benz Entertain Package. Connection may be limited by cellular signal.
12. The mbrace Mobile App is compatible with Apple iPhone® models running iOS 7.0 or later, and Android-based phones running OS 2.3 or later. Please visit MBUSA.com/mbrace for more information.
13. Roadside Assistance repairs may involve charges for parts, service and towing. Vehicle must be accessible from main roads. Depending on the circumstance, these services may be provided by an outside provider, courtesy of Mercedes-Benz Roadside Assistance. Restricted roadways, acts of nature and vehicle accessibility may limit our ability to provide services to you. For full details, eligibility requirements, and limitations/exclusions of Sign and Drive services, as well as the Roadside Assistance Program, please see your dealer.
14. Requires ultralow-sulfur diesel fuel. Mercedes-Benz approves the use of B5 biodiesel (diesel fuel with maximum 5% biodiesel content) that meets ASTM D6751 specifications. Please see your fuel retailer and Operator's Manual for further information. The Mercedes-Benz New Vehicle Limited Warranty does not cover damage caused by non Mercedes-Benz approved fuel.
15. Models equipped with Extended Mobility tires are not provided with a spare tire.
16. Lower aspect ratio tires and accompanying wheels provide substantially increased treadwear, increased tire noise and reduced ride comfort. Serious wheel and tire damage may occur if the vehicle is operated on rough or damaged road surfaces or upon encountering road debris or obstacles. These tires are not designed for use on snow and ice. Winter tires mounted on appropriately sized and approved wheels are recommended for driving in those conditions.
17. The purchase or lease of a new, satellite radio-enabled vehicle includes a 6-month introductory subscription to the Sirius All Access package, as well as a 5-year introductory subscription to SiriusXM Traffic and SiriusXM Weather. SiriusXM Traffic and Weather services are available for select markets. SiriusXM Satellite Radio, SiriusXM Traffic and SiriusXM Weather subscriptions are sold separately or as a package after trial period. If you decide to continue your subscription after your trial, the plan you choose will automatically renew and you will be charged according to your chosen payment method at then-current rates. Fees and taxes apply. To cancel you must call SiriusXM at 1-866-635-2349. See SiriusXM Customer Agreement for complete terms at siriusxm.com. All fees and programming subject to change.
18. The carbon-ceramic brakes are designed expressly for high-performance braking. It is a characteristic of their materials and design that brake noise/squeal may result, along with differing brake pedal feel at lower brake temperatures compared to higher operating temperatures.
19. Option significantly reduces sedan trunk space. Please see your dealer. On E 350 4MATIC Sport Wagon, option requires 17" wheels, includes Extended Mobility tires, and deletes spare tire.
20. Wood/leather steering wheels not available with Open-pore Brown Ash or *designo* wood trims, or with heated steering wheel. If heated steering wheel and sport steering wheel options are combined, steering wheel features a round 3-spoke design instead of a flat-bottom design.
21. Extra-cost option. Some *designo* paintwork, upholstery and trim options may require additional production time.
22. Introduction dates vary. Please see your dealer.



The personal rewards of striving to be the best are even more meaningful in the development of young people than they are for automobiles. Instilling the values of leadership, goal-setting, discipline and teamwork in youth is an investment in everyone's future. It's why Mercedes-Benz USA is collaborating with the Laureus Sport for Good Foundation, with an ongoing commitment to train and place hundreds of coaches for after-school and in-school sports programs in communities around the country. Sports offer kids more than the chance to be physically active and have fun. It's also an opportunity to have a mentor who can guide them, help them learn how to deal with major life issues, and help them grow stronger not just physically but in their character. As a Mercedes-Benz driver, you become a part of this effort to give hundreds of thousands of kids a better life today, and all of us a brighter tomorrow.

Learn more about how Mercedes-Benz USA believes in giving back at MBUSA.com/community