

MERCURY GRAND MARQUIS 1



*The ride says it all.*

just where you're going, but how  
t there that counts. This is what  
Grand Marquis such a  
table automobile. It has a  
ary reputation for a smooth ride  
ceptional comfort. And of  
a powerful V-8 engine. So it's  
prising that it has the highest  
loyalty of any vehicle in its class.\*  
better way to enjoy yourself, on  
y to enjoying yourself?



© 2000 Lincoln Motor Company. All rights reserved.



GDM-JVZ  
MERCURY

MERCURY

2000 MERCURY LS





certs. Weekend getaways and lo  
vacations. Simply put, you're pre  
hard to pin down. But one thing  
certainly be said about you — y  
enjoy socializing. Knowing that  
it great to have a vehicle that can  
handle everyone? A vehicle like  
cury Grand Marquis. It has a ge  
ous interior few cars seem to ha  
these days. Enough room to seat  
people comfortably. And this is  
ordinary space. It's filled with th  
kind of features you'll take pleas  
in. So go ahead. Indulge yoursel  
something you deserve.





# Appointments you'll enjoy

Make driving extra comfortable,

the steering wheel adjusts

easily and effortlessly to your

driving position.

The exterior keypad allows you to

lock and unlock doors by entering

your own personal code (standard on

models available on GS). Or use the

optional Keyless Entry system's key fob

to not only lock and unlock doors,

but also turn on interior lights and opens

the trunk from a distance. It even

includes a panic button.

The optional disc CD changer is available for

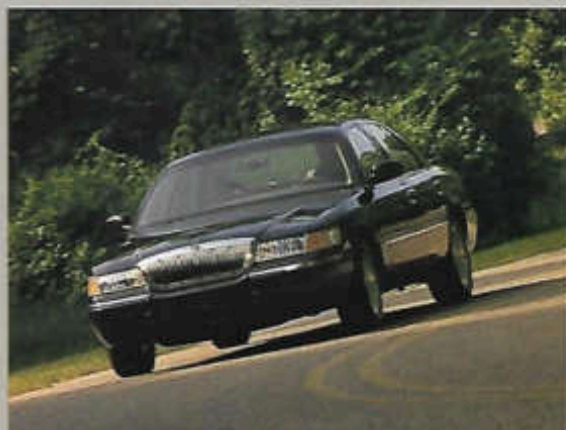
the Grand Marquis LS. Now you can

enjoy rich, clear sound, wherever









Here's the kind of power you're looking for. Grand Marquis comes equipped with a smooth, quiet V-8 engine. And it's the only vehicle in its class with a standard V-8!

What makes this car such a joy to drive? It's due in large part to the Preci-

sionTrac™ suspension system. With the Watt's link-

age rear suspension, you'll find the ride and handling very impressive indeed.

Speed-sensitive power steering helps you maneuver — especially in tight spaces.

Available Traction Control (requires ABS) helps you maintain directional stability and steering control through

... support comes standard on LS.

...nger's side is available with LS

...um Package. What's more,

...d Marquis comes with

...ay power driver's seat

...power recliner which is

...ted through controls

...veniently located at

...side.

...e ultimate in comfort,

...your Grand Marquis LS with

...ible soft, supple,

...er seating surfaces. It'll take your

...to the next level of comfort.



16" chromed locking wheel covers



16" teardrop alloy wheels



16" luxury chromed wheel covers



Tracer



Mystique



Cougar



Sable



Grand Marquis



Villager



Mountaineer



### FUNCTIONAL FEATURES

	GS	LS
Second Generation dual air bags*	STD	STD
100,000-mile scheduled tune-up intervals**	STD	STD
Brake/shift interlock	STD	STD
Stainless steel extended-life exhaust system	STD	STD
Luxury sound insulation	STD	STD
Solar tint glass	STD	STD
Stalk-mounted control on steering column for turn signals, headlamp high beam, flash-to-pass, windshield wiper/washer	STD	STD
Anti-lock Brake System (ABS)	OPT	OPT/PKG
All-Speed Traction Control (requires ABS)	OPT	OPT/PKG
Handling Package	OPT	OPT
Engine block heater	OPT	OPT
Rear air springs with load leveling suspension		OPT

### EXTERIOR FEATURES

	GS	LS
5-mph impact bumpers front/rear	STD	STD
Complex reflector headlamps with crystal lens lenses and parking lamps	STD	STD
Dual power outside fold-away mirrors	STD	STD
Cornering lamps	STD	STD
Narrow bodyside molding with bright insert	STD	
Wide bodyside molding with bright insert		STD
Upper bodyside paint stripes	OPT	STD
Keyless exterior keypad (included with Remote Keyless Entry)	OPT	STD

### AUDIO SYSTEMS

	GS	LS
AM/FM stereo/cassette	STD	STD
Concealed radio antenna	STD	STD
Premium AM/FM stereo/cassette/Premium Sound with Radio Data System (RDS)		OPT/PKG
AM/FM stereo with single-disc CD player	OPT	
6-disc radio-controlled CD changer		OPT

### INSTRUMENTATION

Backlit analog instrumentation with speedometer, fuel gauge, temperature gauge, voltmeter, oil pressure gauge, odometer and trip odometer

Warning lights for low fuel, check engine, fail-safe cooling, emissions system, air bag readiness alert, safety belts, parking brake, ABS and Traction Control (if equipped)

Reminder chimes for headlamps on, key-in-ignition, and safety belt

Digital instrumentation with built-in message center

### INTERIOR COMFORT AND CONVENIENCE FEATURES

CRF-free air conditioner

Height-adjustable front outboard shoulder safety belts

Tilt steering wheel

Rear door childproof safety locks

Power windows with driver's side express down

Autolamp on/off delay lighting system

Automatic parking brake release

Door map pockets

Passenger visor mirror

Luggage compartment, glove box, dual instrument panel courtesy and dome lights

Dual cup holders

Interval windshield wipers with fluidic washer system

Rear window defroster

Rear seat heat ducts

Fingertip speed control with tap-up/tap-down feature

Illuminated entry system

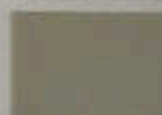
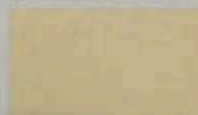
Power lock group (includes power door locks and decklid release)

Front and rear carpeted floor mats

Harvest Gold  
Clearcoat Metallic

Torredor Red  
Clearcoat Metallic

Spruce Green  
Clearcoat Metallic





### SPORT AND CONVENIENCE FEATURES (CONTINUED)

	GS	LS
Power windows		STD
Seats with driver power recliner, 8-way power driver's seat	STD	
Front seats with driver power		
lumbar support, and 8-way power driver's seat		STD
Driver seat with power recliner and power lumbar		OPT/PKG
Keyless entry system with two remote hand-held key fobs		
for keypad	OPT	STD
Includes dual illuminated visor mirrors;		
front and dual beam map/dome lights.	OPT	STD
Power windows		OPT
Leather, leather wrapped steering wheel		OPT/PKG
Temperature control		OPT/PKG
Power windows, inside rearview mirror with compass		OPT/PKG

### TIRES

	GS	LS
15" steel wheel with all-season steel-belted radials	STD	STD
16" alloy wheels	STD	
16" alloy wheels		STD
16" alloy wheels with		OPT/PKG
15" steel wheel and tire	OPT/PKG	OPT/PKG
16" alloy wheels with		
15" steel wheel and tire	OPT	OPT

### CHANGES

Some of the changes in this brochure, certain changes in standard equipment, options, prices and the like, may have occurred which would not be included in these pages. Your Mercury dealer is your best source for up-to-date information.

Mercury reserves the right to change product specifications at any time without incurring obligations.

ENGINE*		SUSPENSION	
Type	SOHC V-8	Front—Independent SLA with dive control geometry, springs, gas-pressurized shocks, bushings and stabilizer bar	
Displacement	4.6 liters	Rear—Solid axle with 4-bar link and Watt's linkage, rubber-isolated springs, gas-pressurized shocks and stabilizer bar	
Horsepower (SAE net)	200 @ 4250 rpm (215 @ 4500 rpm with Handling Package)		
Torque (lbs.-ft. SAE net)	275 @ 3000 rpm (285 @ 3000 rpm with Handling Package)		
Fuel delivery	Sequential multi-port electronic fuel injection		
Compression ratio	9.0:1		
Engine control	EEC-V Electronic Engine Control		
CAPACITIES		STEERING	
Fuel tank	19.0 gals.	Power speed-sensitive, variable-assist with pre-lubricated low-friction steering linkage	
Curb weight (GS, LS)	3,917 lbs. / 3,922 lbs.		
TRANSMISSION		DIMENSIONS	
Four-speed electronic automatic overdrive with overdrive lockout		Headroom (front/rear)	39.4" / 38.1"
BRAKES		Legroom (front/rear)	42.5" / 38.4"
Power 4-wheel disc with dual piston front calipers		Shoulder room (front/rear)	60.1" / 60.3"
Front/rear	12.4-inch disc / 11.1-inch disc	Hiproom (front/rear)	58.0" / 59.0"
		Cargo volume	20.6 cu. ft.
		Wheelbase	114.7"
		Overall length	211.9"
		Track (front/rear)	63.4" / 65.3"
		Overall height/width	56.8" / 78.2"

STD= Standard Feature; OPT= Optional Feature; PKG= included in Option Package

\*Always wear your safety belt and secure children in the rear seat.

\*\*Under normal driving conditions with routine fluid/filter changes.

\*Minor engine differences exist between engines produced at different Ford Motor Company plants.

FPA statement: 1999 EPA mileage estimates were unavailable when this brochure was printed.

Option Availability: Options shown or described in this brochure are available at extra cost and may be offered only in combination with other options or subject to additional ordering requirements or limitations.

Blue Clearcoat  
Metallic

Deep Wedgewood  
Blue Clearcoat  
Metallic

Medium Grey  
Clearcoat Metallic

Silver Frost Clearcoat  
Metallic

Vibrant White  
Clearcoat

Black Clearcoat

INTERIOR COLORS:  
Light Graphite  
Deep Slate Blue  
Oxford White/Light



Optional ABS provides straighter stops and greater steering control during emergency stopping on slippery road surfaces.

Among comparable basic large cars tested, Grand Marquis is the only car with a double five star crash rating — the government's highest possible rating.\*

#### LS PREMIUM PACKAGE



Teardrop alloy wheels  
Leather-wrapped steering wheel  
Electronic automatic temperature control  
8-way power passenger seat with power recliner and power lumbar support  
Electrochromic (auto-dimming) inside rearview mirror with compass


#### LS ULTIMATE PACKAGE

Includes all of the Premium Package equipment plus the following:  
Anti-lock Brake System (ABS)  
All-Speed Traction Control (requires ABS)  
Digital instrumentation  
Premium AM/FM stereo/cassette/Premium Sound with Radio Data System (RDS)

#### HANDLING PACKAGE

3.27 axle ratio  
16" lacy-spoke cast-aluminum wheels with P225/60TR16 black sidewall "Handling" tires  
Dual exhaust (with 215 HP engine rating)  
Rear air suspension with unique springs  
Unique tuned suspension (shocks, spring rates, stabilizer bars)

  Ford Credit provides the convenience of one-stop shopping with a variety of simple to understand purchase or Red Carpet Lease programs available right at the dealership. For more information, ask your dealer for details, or visit us on the web at [www.fordcredit.com](http://www.fordcredit.com).

 The Mercury Cycling Team is hitting the streets and will be participating in races from coast to coast. Look for this pro cycling team in your area.

For more information on Mercury vehicles via the Internet enter: [www.mercuryvehicles.com](http://www.mercuryvehicles.com).



For LS models, an available universal programmable garage door opener located on the visor can control up to three garage doors or turn on by lights with additional equipment.

A dealer installed cargo net helps keep your trunk organized and prevents groceries and packages from sliding around.

\*Driver and passenger front crash test. Government's highest possible rating.

dedicated to your complete satisfaction.

ROADSIDE ASSISTANCE

MERCURY VEHICLE LIMITED WARRANTY

MERCURY CUSTOMER ASSISTANCE CENTER


SPECIAL DELIVERY PROCESS

OWNER DELIVERY PROCESS

WHAT IS THE MERCURY COMMITMENT?

It is the extra comforts of ownership,  
exemplified in a comprehensive benefits  
package. It is the assurance that meeting your  
driving needs will always be our  
ultimate objective.

Ask your dealer for complete details and a copy  
of the limited warranty

Imagine yourself in a Mercury 

LITHO IN USA (500K) 8-98 P-6818 Buckle up — together we can save lives.



50%  
TOTAL RECOVERED FIBER  
10% POST CONSUMER FIBER

