

2011 Milan+Milan Hybrid



mercuryvehicles.com



The new 2011 Milan lineup, featuring
America's most fuel-efficient midsize sedan!



41 mpg city¹ for Milan Hybrid. 33 mpg hwy² for Milan.

¹EPA-estimated 41 city/36 hwy/39 combined mpg, Milan Hybrid. Actual mileage will vary. Midsize class per R. L. Polk & Co. ²EPA-estimated 23 city/33 hwy/26 combined mpg, 2.5L I-4 automatic, FWD.



2011 Milan+Milan Hybrid

mercuryvehicles.com





Top speed of 47 mph in pure electric mode.

In stop-and-start city driving, Milan Hybrid excels. That's why city mileage (41 mpg) is higher than highway mileage (36 mpg). You can actually achieve more than **700 miles* on a single tank of gas** in the city. Milan Hybrid's **2.5L I-4 Atkinson-cycle engine** works with the electric traction motor to create 191 net hp. That motor captures kinetic energy during regenerative braking (every time you brake) and uses it to help recharge the 275-volt sealed battery pack. The pack completes the cycle by supplying energy to start the engine, to drive at low speeds and to boost acceleration. A continuously variable transmission keeps shifts as smooth as the ride.

*EPA-estimated 41 mpg city with 17.5-gallon fuel tank. Actual mileage will vary.

Milan Hybrid. Steel Blue Metallic.



2011 Milan+Milan Hybrid

mercuryvehicles.com



More leaves for more mpg.

Watch fresh efficiency leaves grow on the brightly lit vine the longer you keep Milan Hybrid in Electric Drive. You achieve your best mileage running on electric power alone. After shutdown, the system reviews your performance and gives kudos for outstanding achievement.

Exclusive SmartGauge™ with EcoGuide on Milan Hybrid features 2 customizable 4.3-in. liquid crystal display (LCD) screens that flank the luminous speedometer. Choose from one of 4 modes to Inform, Enlighten, Engage or Empower yourself. Screen settings are controlled by switches on the steering wheel. Obtain as much information as desired to help guide you on your remarkable, and remarkably efficient, hybrid experience.

Inform: Adds fuel level and battery-charge status.

Enlighten: Adds electric vehicle mode indicator and tachometer

Engage: Adds engine output power and battery output power

Empower: Adds power to wheels, engine pull-up threshold and accessory power consumption



Trip Summary

Distance	1.3 mi
Fuel Economy	40.0 mpg
Fuel Used	0.0 gallons
Long Term Fuel Economy	38.0 mpg



Of performance, efficiency and radar sensors.

Care to sip? The 175-hp **2.5L I-4 engine** on Milan can be teamed with either a standard 6-speed manual or an available 6-speed automatic transmission. If automatic is your preference, you'll achieve up to 33 mpg¹ on the highway. And immense satisfaction along the way.

Born to zip? In Milan Premier, experience the pull of an available 240-hp **3.0L V6 Flex Fuel (FFV) engine** – fill up with E85, gasoline or any blend of the two. The V6 is mated to an efficient 6-speed SelectShift Automatic™ transmission with thumb-switch action. A techno-wonder, SelectShift enables you to shift for yourself, or automatically chooses the optimal gear for any situation. Up your enthusiasm every time you turn the key.



Class-exclusive² **BLIS® (Blind Spot Information System)** with cross-traffic alert utilizes 2 radar sensors – located in the rear quarter panels – to help detect vehicles in adjacent lanes. If sensors detect any in your blind-spot zones, this available system alerts you with a warning light in the appropriate sideview mirror. To further enhance BLIS, **cross-traffic alert** scans for traffic approaching from either side when you're slowly backing out of a parking spot or driveway, and can detect vehicles up to 45 feet away. Brilliant technology to help prevent a bad day.

¹EPA-estimated 23 city/33 hwy/26 combined mpg, 2.5L I-4 automatic, FWD. ²Class is Midsize Sedans.

Milan Premier. White Platinum Metallic Tri-coat. Available equipment.



2011 Milan+Milan Hybrid

mercuryvehicles.com



Stop wondering. Start knowing.



The available **Navigation System** (shown) features a vibrant 8-in. LCD touch screen and colorful maps that you can zoom and scroll. This system plays DVDs while Milan is in Park and provides nearly 10 gigs of photo and music storage space. It also includes an introductory 6-month subscription to **SIRIUS Traffic™** and **SIRIUS Travel Link™** which provides fuel prices, weather reports, movie listings, sports scores and more.

Added assistance: A convenient **rear view camera** is part of the available Driver's Vision Package. Shift into Reverse – a full-color image from the decklid-mounted camera appears in the rearview mirror. Or on the available navigation screen.



*Real-time traffic monitoring available in select markets. Some features unavailable while driving. Subscription required after introductory 6 months expire.

2011 Milan+Milan Hybrid

mercuryvehicles.com



SYNC, plus serious acoustics.

SYNC. Say the word. Voice-activated **Mercury SYNC®** is an award-winning, available system that works with your paired Bluetooth®-enabled mobile phone and your digital media player. It provides hands-free calling, plays music, delivers Vehicle Health Reports and 911 Assist.™ With the touch of a button and voice commands, SYNC with **Traffic, Directions and Information** services provides turn-by-turn directions, personalized traffic alerts and more. SyncMyRide.com has the latest details.

With **SIRIUS® Satellite Radio**, enjoy an introductory 6-month subscription to over 130 channels including 100% commercial-free music, plus the best in sports, news, talk and entertainment, 24/7, coast-to-coast. New for 2011, you can add **The Best of XM** channels at no charge.²

Bring the home-theater, 390-watt performance of Dolby® Pro Logic® II into your Milan. The available **Audio System from Sony®** mesmerizes with Dolby Automotive Entertainment Program (DAEP) 5.1 Surround Sound. One dozen high-quality speakers and an amplifier work in concert to more than deliver Sony's unique, rich tonality.

¹Driving while distracted can result in loss of vehicle control. Only use mobile phones and other devices, even with voice commands, when it is safe to do so. Real-time traffic and turn-by-turn directions available in select markets. Standard text messaging and data rates apply. ²Subscription required after introductory 6 months expire. Call 1-800-351-4517 for details on The Best of XM.



2011 Milan+Milan Hybrid

mercuryvehicles.com



Stay the course.

Operating with the 4-wheel disc Anti-Lock Brake System (ABS) and traction control, **AdvanceTrac® electronic stability control**¹ constantly monitors vehicle speed, throttle position and steering wheel angle. When wheel slip is sensed, the system automatically modulates engine power and/or selectively applies the brakes to help keep Milan on its intended path.

If the going gets especially slick, the available **Intelligent All-Wheel-Drive (AWD) System** on Milan V6 models reacts, seamlessly distributing more torque to the wheels with the best grip. To help maintain traction, torque flows between the front and rear axles – plus side to side on each. Should traction be reduced to one wheel, AWD directs the majority of torque there to help keep you moving forward. Positively.

¹Remember that even advanced technology cannot overcome the laws of physics. It's always possible to lose control of a vehicle due to inappropriate driver input for the conditions.



New Appearance Package²

Bright chrome finish on grille

Chrome sideview mirror caps

18-in. wheels with premium polished finish

Rear decklid spoiler

Dark Charcoal leather-trimmed seats with Silversmoke Metallic piping

Unique black finish on center stack, instrument panel and door switch inserts

Premium carpeted floor mats with "MILAN" logo

²Available. Shown in Tuxedo Black Metallic.

2011 Milan+Milan Hybrid

mercuryvehicles.com



Confidence stems from resting assured.

In case of emergency, Milan helps to protect you with a **steel safety cage**, high-strength side-intrusion door beams, and robust rocker panels that act to resist, absorb and divert impact forces. Six airbags are on alert too: dual-stage front airbags in the **Personal Safety System™**, front-seat side airbags, and side-curtain airbags that cover both rows. If any airbag deploys or a safety belt pretensioner activates, the **SOS Post-Crash Alert System™** takes action – the horn automatically sounds and the hazard lights flash so you and your passengers may be more readily located.

*SOS hardware may become damaged or the battery may lose power in a crash, which could prevent operation. Not all crashes will activate an airbag or safety belt pretensioner.

Allow others to drive your Milan – on your own terms. The multifaceted **MyKey® owner controls feature** lets you program ignition keys to help encourage smart driving habits. Buckling up. Traveling at appropriate speeds. And many more such aids. On the driver's door, a **SecuriCode™ keypad** allows entry with just a personalized code.



2011 Milan+Milan Hybrid

mercuryvehicles.com



BASE MODEL DIMENSIONS

Wheelbase 107.4"
 Length 190.9"
 Width [excl. mirrors/incl. mirrors] 72.2"/80.1"
 Height 56.9"
 Front track 61.7"
 Rear track 61.3"
 Head room (front/rear) 38.7"/37.8"
 Shoulder room (front/rear) 57.4"/56.5"
 Hip room (front/rear) 54.0"/53.4"
 Leg room (front/rear) 42.3"/37.1"

CAPACITIES

Fuel capacity
 FWD 17.5 gal.
 AWD 16.5 gal.
 Cargo volume
 Milan 16.5 cu. ft.
 Milan Hybrid 11.8 cu. ft.
 Seating capacity 5
 Total passenger volume
 Milan 100.3 cu. ft.
 Milan Hybrid 99.8 cu. ft.

HORSEPOWER, TORQUE AND EPA-ESTIMATED FUEL ECONOMY**2.5L IVCT DURATEC® I-4 ENGINE**

Horsepower 175 @ 6,000 rpm
 Torque 172 lb.-ft. @ 4,500 rpm
 6-speed manual 22 city/32 hwy/25 combined mpg
 6-speed automatic 23 city/33 hwy/26 combined mpg

3.0L IVCT DURATEC V6 FFV ENGINE¹

Horsepower 240 @ 6,550 rpm
 Torque 223 lb.-ft. @ 4,300 rpm
 6-speed SelectShift Automatic™ (FWD)
 20 city/28 hwy/23 combined mpg

6-speed SelectShift Automatic (AWD)
 18 city/26 hwy/20 combined mpg

2.5L IVCT I-4 ATKINSON-CYCLE ENGINE WITH PERMANENT-MAGNET AC-SYNCHRONOUS ELECTRIC MOTOR

Net horsepower 191
 Electronically controlled continuously variable transmission (eCVT) 41 city/36 hwy/39 combined mpg

¹Fuel economy when operating on E85 will yield different values than gasoline. See fueleconomy.gov for more information.

²Always wear your safety belt and secure children in the rear seat.

Subscriptions governed by SIRIUS Terms and Conditions available at sirius.com. Service available in the 48 contiguous United States and D.C. SIRIUS, XM and all related marks and logos are trademarks of SIRIUS XM Radio Inc. and its subsidiaries.

Microsoft is a registered trademark of Microsoft Corporation. The Bluetooth word mark is a trademark of the Bluetooth SIG, Inc.

MapQuest is a registered trademark of AOL Inc.

Sony is a registered trademark of the Sony Corporation.

Dolby and Pro Logic are registered trademarks of Dolby Laboratories Licensing Corporation.

HD Radio is a proprietary trademark of iBiquity Digital Corp.

Standard Features

POWERTRAIN/FUNCTIONALITY

4-wheel disc Anti-Lock Brake System (ABS)
 Front-wheel drive (FWD)
 Short- and long-arm (SLA) independent front suspension
 Multilink independent rear suspension
 Power rack-and-pinion steering

EXTERIOR

Chrome exhaust tips
 Easy Fuel® capless fuel filler
 Light-emitting diode (LED) taillamps
 Power, heated, body-color sideview mirrors with security approach lamps and integrated blind spot mirrors
 Solar-tinted glass
 Speed-sensitive windshield wipers

INTERIOR

Audio input jack
 Cabin air filtration system
 Dash-top storage bin
 Front center console with armrest, two-tiered storage and 2 beverage holders (non-Hybrid only)
 Ice Blue™-lit instrument panel cluster
 Leather-wrapped steering wheel with cruise and audio controls
 Message center
 Power door locks with child-safety rear door locks
 Power remote trunk release
 SIRIUS Satellite Radio includes satellite receiver, antenna and introductory 6-month subscription
 Tilt/telescoping steering column

SECURITY/SAFETY

Personal Safety System™ for driver and front passenger with dual-stage front airbags²; safety belt pretensioners, safety belt energy-management retractors, safety belt usage sensors, driver's seat position sensor, crash severity sensor, restraint control module and Front-Passenger Sensing System
 3-point safety belts for all seating positions
 AdvanceTrac® electronic stability control with brake-actuated traction control
 Anti-theft perimeter alarm
 Front-seat side airbags²
 Lower anchors and tether anchors for child-safety seats (LATCH)
 MyKey® owner controls feature
 SecuriCode™ keyless entry keypad
 SecuriLock® Passive Anti-Theft System
 Side-curtain airbags²
 Side-intrusion door beams
 SOS Post-Crash Alert System™
 Tire Pressure Monitoring System (excludes spare)

Comparisons based on 2010 competitive models (Milan and Milan Hybrid: Class is Midsize Sedans), publicly available information and Ford certification data at time of release. Some features discussed may be optional. Vehicles shown may contain optional equipment. Features shown may be offered only in combination with other options or subject to additional ordering requirements or limitations. Dimensions shown may vary due to optional features and/or production variability. Following release of the PDF, certain changes in standard equipment, options and the like, or product delays may have occurred which would not be included in these pages. Your Lincoln Mercury Dealer is the best source for up-to-date information. Lincoln Mercury reserves the right to change product specifications at any time without incurring obligations.

Ford Extended Service Plan For a purchase or lease, the Ford Extended Service Plan (ESP) gives you "Peace-of-Mind" protection designed to cover key vehicle components and protect you from the cost of unexpected repairs. Ask your dealer for a Ford ESP, the only service contract backed exclusively by Ford and honored at all Ford Lincoln Mercury dealerships.

Ford Motor Company Insurance Services Get Ford Motor Company quality in your auto insurance. Our program offers industry-leading benefits and competitive rates. Call 1-877-367-3847, or visit us at fordvip.com for a no-obligation quote. Insurance offered by American Road Services Company (in CA, American Road Insurance Agency), a licensed agency and subsidiary of Ford Motor Company.

Peace of mind comes from a 3-year/36,000-mile bumper-to-bumper **New Vehicle Limited Warranty** that covers repair, replacement or adjustment of parts at no additional cost, as well as a 5-year/60,000-mile powertrain limited warranty which features no deductible and is fully transferable. Roadside Assistance for 5 years or 60,000 miles provides the security of knowing that help may be only a phone call away should you run out of fuel, lock yourself out of the vehicle or need towing. Your Lincoln Mercury Dealer will provide complete details.

Get the ride you want. Whether you plan to lease or finance, you'll find the choices that are right for you at **Ford Credit**. Ask your Lincoln Mercury Dealer for details or check us out at fordcredit.com.

Milan

Includes all standard features, plus:

RAPID SPEC 100A

2.5L DOHC Duratec I-4 engine with iVCT
6-speed manual transmission
16-in. 5-spoke painted aluminum wheels
P205/60R16 all-season tires
Automatic halogen headlamps
8-way power driver's seat with manual lumbar
2-way manual front-passenger seat
60/40 split-fold spring-assisted rear seat
AM/FM stereo/single-CD player with MP3 capability and 6 speakers
Single-zone manual air conditioning
Power windows with one-touch-up/-down driver's side window feature

Milan Premier

Includes select Milan features, plus:

RAPID SPEC 200A

6-speed automatic transmission
17-in. 7-spoke painted aluminum wheels
P225/50R17 all-season tires
Fog lamps
10-way power driver's seat with power lumbar
4-way power front-passenger seat
Leather-trimmed seats
Heated front seats
Carpeted front and rear floor mats
Ambient lighting
Dual-zone electronic automatic temperature control
Auto-dimming rearview mirror
Mercury SYNC® voice-activated, in-vehicle connectivity system
Power windows with global open and one-touch-up/-down for driver and front passenger
Universal garage door opener

Milan Hybrid

Includes select Milan Premier features, plus:

RAPID SPEC 300A

2.5L iVCT I-4 Atkinson-cycle engine with permanent-magnet AC-synchronous electric motor
Electronically controlled continuously variable transmission (eCVT)
275-volt sealed nickel-metal-hydrate (NiMH) battery
Driver's knee airbag²
Fixed rear seats
Regenerative Braking System
17-in. 15-spoke painted aluminum wheels
Reverse Sensing System
SmartGauge™ with EcoGuide instrument cluster with 2 configurable LCD screens and message center
AM/FM stereo/6-disc CD changer, MP3 capability and 6 speakers



APPEARANCE

Rear decklid spoiler

ELECTRONICS

Remote start systems
Vehicle security system
Forward or reverse bumper-mounted parking assist system by EchoMaster^{®2}
GPS tracking and recovery by SmartAlert™²
Portable navigation systems by Garmin^{®2}
Wiper de-icer and debris cleaner by Wiper Shaker²

EXTERIOR

Locking fuel plug
Hood deflector
Moonroof deflector
Side window deflectors
Chrome door handles
Splash guards

INTERIOR

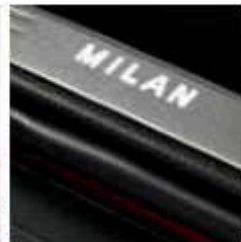
Leather-trimmed interior seating by Katzkin^{®2}
Interior light kit
Hard cargo organizer
Soft cargo organizer (large and standard sizes)
Soft cargo cooler bag
Cargo area protector³
All-weather floor mats
Cargo net
Auto-dimming rearview mirror
Ash cup/coin holder with or without lighter element

WHEELS

18-in. wheels³
Wheel locks

INVISION is a trademark of Audiovox Corporation.
SmartAlert is a registered trademark of Inlex, Inc.
Garmin is a registered trademark of Garmin Ltd.
THULE is a registered trademark of Thule Sweden AB.
Katzkin is a registered trademark of Katzkin Leather, Inc.

¹Always wear your safety belt and secure children in the rear seat.
²Mercury Licensed Accessories. ³Not for use with Hybrid.



Racks and carriers by THULE^{®1} • Illuminated door sill plates • Dual headrest DVD by INVISION™²

To learn more about Mercury Custom Accessories and to shop online, visit mercuryaccessories.com.

Genuine Mercury Accessories will be warranted for whichever provides you the greatest benefit: 12 months or 12,000 miles (whichever occurs first), or the remainder of your Bumper-to-Bumper 3-year/36,000-mile New Vehicle Limited Warranty. Contact your local Lincoln Mercury Dealer for details and a copy of the limited warranty. Mercury Licensed Accessories (MLA) are warranted by the accessory manufacturer's warranty. Mercury Licensed Accessories are fully designed and developed by the accessory manufacturer and have not been designed or tested to Ford Motor Company engineering requirements. Contact your Lincoln Mercury Dealer for details regarding the manufacturer's limited warranty and/or a copy of the MLA product limited warranty offered by the accessory manufacturer.



Milan Available Rapid Specs

RAPID SPEC 101A
6-speed automatic transmission

RAPID SPEC 102A
6-speed automatic transmission, carpeted front and rear floor mats, 17-in. 5-spoke-design steel wheels with silver-painted covers, and P225/50R17 all-season tires

RAPID SPEC 103A
6-speed automatic transmission, carpeted front and rear floor mats, 17-in. 5-spoke-design steel wheels with silver-painted covers, P225/50R17 all-season tires, fog lamps, rear spoiler, and **Sun & SYNC Package**, which includes power tilt-and-slide moonroof, compass, auto-dimming rearview mirror, and Mercury SYNC® voice-activated, in-vehicle connectivity system



Camel cloth. Available equipment.

Available Options and Packages

Carpeted front and rear floor mats

Mercury SYNC¹

Remote Start System

Reverse Sensing System²

Sun & SYNC Package¹

Red Candy Metallic Tinted Clearcoat paint³

White Platinum Metallic Tri-coat paint^{2,3}

Colors are representative only. See your dealer for actual paint/trim options.

¹Requires Rapid Spec 102A. ²Requires Rapid Spec 102A or 103A.

³Additional cost.

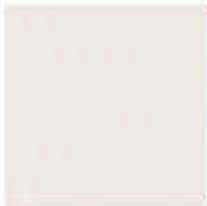


16-in. 5-Spoke Painted Aluminum Wheels
Standard



17-in. 5-Spoke-Design Steel
Wheels with Silver-Painted Covers
Available

Available Interiors:
A, B, C



White Platinum Metallic
Tri-coat



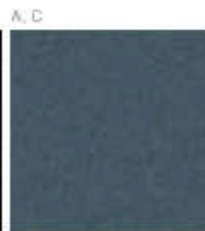
Red Candy Metallic
Tinted Clearcoat



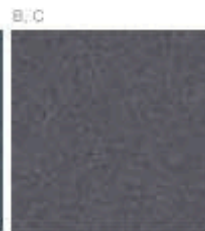
White Suede



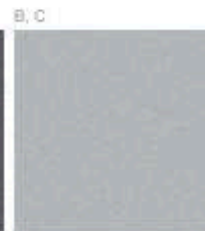
Tuxedo Black Metallic



Steel Blue Metallic



Sterling Gray Metallic



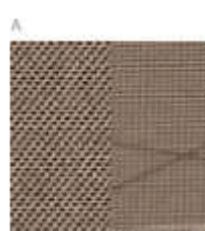
Ingot Silver Metallic



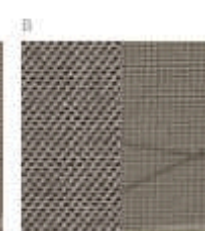
Blue Flame Metallic



Bordeaux Reserve
Red Metallic



Camel Cloth



Medium Light
Stone Cloth



Dark Charcoal Cloth

2011 Milan+Milan Hybrid

mercuryvehicles.com





Milan Premier Available Rapid Specs

RAPID SPEC 201A

Rear spoiler, Reverse Sensing System, and **Driver's Vision Package**, which includes BLIS[®] (Blind Spot Information System) with cross-traffic alert and rear view camera

RAPID SPEC 202A

Rear spoiler, Reverse Sensing System, **Driver's Vision Package**, and **Moon & Tune Package**, which includes power tilt-and-slide moonroof and Audio System from Sony[®] with Dolby[®] Automotive Entertainment Program (DAEP) 5.1 Surround Sound, AM/FM stereo/6-disc in-dash CD changer, MP3 capability and 12 speakers



Agate leather trim, Medium Light Stone inserts, Navigation System, Moon & Tune Package.

Available Options and Packages

3.0L Duratec[®] V6 FFV engine with iVCT and 6-speed SelectShift Automatic[™] transmission

Appearance Package includes 18-in. premium polished aluminum wheels; chrome mirror caps; bright chrome grille; rear spoiler; sport-tuned suspension; mini-spare; Dark Charcoal leather-trimmed seats with Silverstone Metallic contrasting piping; front and rear premium carpeted floor mats with "MILAN" logo; unique black center stack appliqué, instrument panel spear appliqué and door switch bezel appliqué

Intelligent All-Wheel-Drive (AWD) System (3.0L V6 only)

Hard drive-based, voice-activated Navigation System² features SIRIUS Traffic and SIRIUS Travel Link (with introductory 6-month subscription), plus about 10 gigabytes of digital storage for pictures and music; and HD Radio[™] technology²

Moon & Tune Package[®]

Premium front and rear floor mats, plus trunk mat

Rear spoiler³

Reverse Sensing System³

Red Candy Metallic Tinted Clearcoat paint⁴

White Platinum Metallic Tri-coat paint⁴

Colors are representative only. See your dealer for actual paint/trim options.

¹Available on Appearance Package. ²Requires Rapid Spec 202A.

³Requires Rapid Spec 200A. ⁴Additional cost.

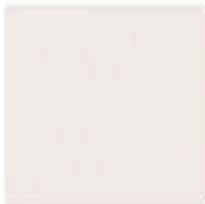


17-in. 7-Spoke Painted Aluminum Wheels
Standard on I-4 Premier and V6 Premier



18-in. Premium Polished Aluminum Wheels
Included with Appearance Package

Available Interiors:
A, B, C, D



White Platinum Metallic Tri-coat¹



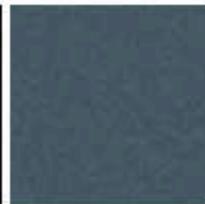
Red Candy Metallic Tinted Clearcoat



White Suede



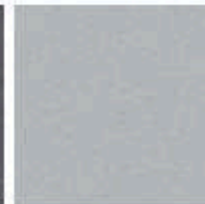
Tuxedo Black Metallic¹



Steel Blue Metallic



Sterling Gray Metallic¹



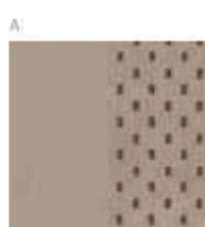
Ingot Silver Metallic¹



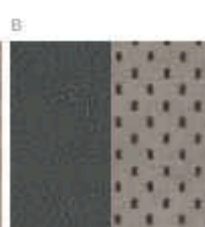
Blue Flame Metallic



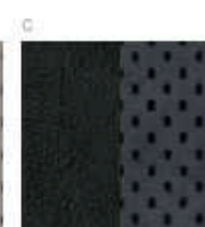
Bordeaux Reserve Red Metallic¹



Camel Leather with Perforated Inserts



Agate Leather with Medium Light Stone Inserts



Dark Charcoal Leather with Perforated Inserts



Dark Charcoal Leather with Silverstone Metallic Piping¹

2011 Milan+Milan Hybrid

mercuryvehicles.com



MERCURY



Milan Hybrid Available Rapid Spec

RAPID SPEC 301A

Driver's Vision Package includes BLIS® (Blind Spot Information System) with cross-traffic alert and rear view camera

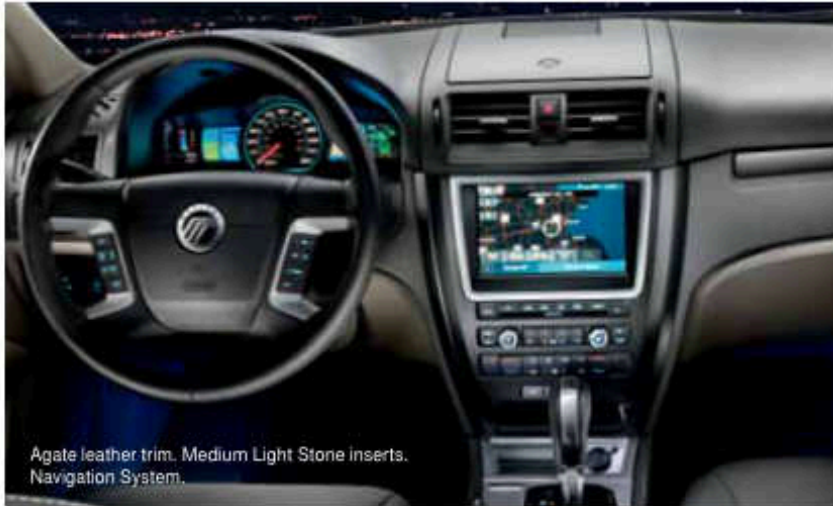
Hard drive-based, voice-activated Navigation System features SIRIUS Traffic and SIRIUS Travel Link (with introductory 6-month subscription) and about 10 gigabytes of digital storage for pictures and music; and HD Radio™ technology

Heated front seats

Leather-trimmed seats

Moon & Tune Package includes power tilt-and-slide moonroof and Audio System from Sony® with Dolby® Automotive Entertainment Program (DAEP) 5.1 Surround Sound, AM/FM stereo/6-disc in-dash CD changer, MP3 capability and 12 speakers

Rear spoiler



Agate leather trim, Medium Light Stone inserts, Navigation System.

Available Options and Packages

Hard drive-based, voice-activated Navigation System features SIRIUS Traffic and SIRIUS Travel Link¹

Moon & Tune Package¹

Premium front and rear floor mats, plus trunk mat

Red Candy Metallic Tinted Clearcoat paint²

White Platinum Metallic Tri-coat paint²

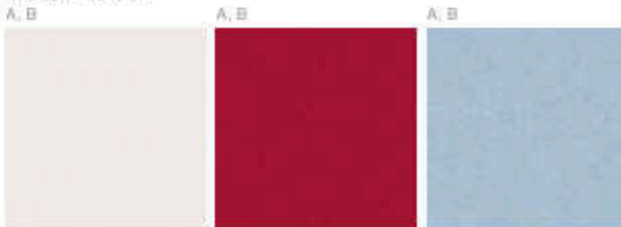
Colors are representative only. See your dealer for actual paint/trim options.

¹Requires Rapid Spec 300A. ²Additional cost.



17-in. 15-Spoke Painted Aluminum Wheels Standard

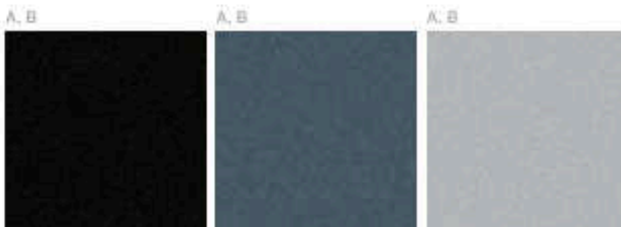
Available Interiors:



White Platinum Metallic Tri-coat

Red Candy Metallic Tinted Clearcoat

Light Ice Blue Metallic



Tuxedo Black Metallic

Steel Blue Metallic

Ingot Silver Metallic



Medium Light Stone Cloth

Agate Leather with Medium Light Stone Inserts

Features that make Milan the complete package.

Speed-sensitive wipers. White electroluminescent instrumentation. Configurable ambient lighting.¹ Dual-zone electronic automatic temperature control.¹ Rear view camera.¹

¹Available.

