

MERCURY MOUNTAINEER 1999



It's where you want to go that matters.

You definitely have your own agenda. And you're certainly not willing to let anything get in your way. Not eight inches of snow. A torrential downpour. Or a chuckhole-laden road. So it's a necessity for you to have a vehicle that'll get you where you're headed. Your Mountaineer has a smooth ride and comes with plenty of reassuring and innovative features. So you can easily handle whatever life has to dish out.







Room to accommodate your sense of adventure.



You need a Sport Utility Vehicle that's v
capable. Well, that's a given with
Mountaineer. What's more important t
you is being comfortable. This is whe
Mountaineer really stands out. Here's th
kind of refined interior you'll appreciat
With great features like a leather-wrap
steering wheel with fingertip-speed co
height-adjustable front safety belts and
illuminated entry system. Add availabl
leather seating surfaces and it's even m
comfortable. Its 60/40 split fold-down
seat, luggage rack and plenty of cargo s
make it very adaptable as well. So fill 'e
and go to town. Or country. Or whe
the spirit moves you.

Get the MAX out of you

Take a look up. There's your available overhead console with outside temperature and compass display, second-row reading lamps/dome light and storage bin.

For the ultimate in convenience, equip your Mountaineer with the optional TravelNote® digital memo recorder with HomeLink® universal garage door opener. HomeLink can operate your gate, garage door and more. A great idea come to you while you're driving? TravelNote records up to three minutes worth of messages.

Need to use a computer, cell phone or other electronic devices? No problem. You'll find a second 12-volt power point comes standard.

Of course, you'll want to bring your favorite discs along for the ride. So go for the optional 6-disc CD changer. What



V.



stone



FEETONG



Mountaineer comes with an advanced
Single Overhead Camshaft (SOHC) 4
liter V-6 engine with a 5-speed electro
ly controlled automatic transmission a
the kind of towing power you need. If
you want even more power, you may
to opt for the available 5.0-liter V-8

The smooth, comfortable ride is due to
the Short- and Long-Arm (SLA) front
suspension which lets each front wheel
react independently over rough surface

Mountaineer is just plain easy to steer
thanks to its responsive power rack and
pinion steering system.

The V-6 engine is available with the 4
Control-Trac system and the V-8 is avail
with full-time, hassle-free All Wheel
with no buttons to push or switches to
turn. So you can get through mud, rain
sleet and snow without a worry

You'll appreciate overdrive lockout wh

in open just the window or the entire

tractable cargo cover pulls out to keep

ge safely out of sight.

the optional High-Series floor console,

ate fan and audio controls are provided

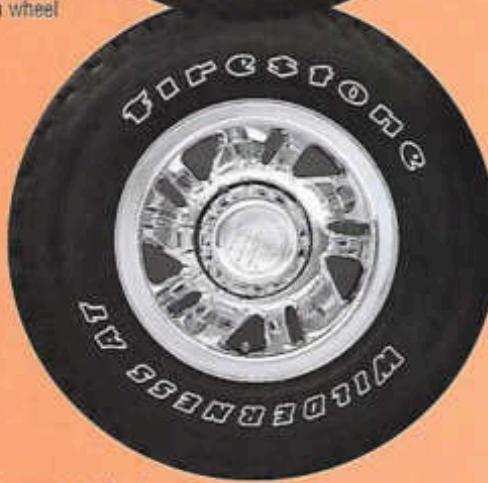
ar passengers. The Personal Audio

m lets them listen to something differ

rough headphones (not included).



cast aluminum
deep dish wheel



bright chrome steel wheel
(Appearance Package only)



Tracer



Mystique



Cougar



Sable



Grand Marquis



Villager



Mountaineer



ENGINE	V-6	V-8
Type	SOHC V-6	OHV V-8
Displacement	4.0 liters	5.0 liters
Horsepower (SAE net)	210 @ 5250 rpm	215 @ 4200 rpm
Torque (lbs.-ft. SAE net)	240 @ 3250 rpm	288 @ 3300 rpm
Fuel delivery	Sequential multi-port electronic fuel injection with EEC-V computer	Sequential multi-port electronic fuel injection with EEC-V computer

TRANSMISSION	V-6	V-8
Type	Five-speed electronic automatic overdrive with overdrive lockout switch	Four-speed electronic automatic overdrive with overdrive lockout switch

CHASSIS	V-6	V-8
Drivetrain	4x2 or 4x4 Control-Trac	4x2 or full-time All-Wheel Drive (AWD)
Frame	Ladder-type, single channel with six crossmembers	Ladder-type, single channel with six crossmembers

BRAKES	V-6	V-8
	Power-assisted 4-wheel disc Anti-lock Brake System (ABS)	

SUSPENSION	V-6	V-8
Front	Independent Short- and Long-Arm (SLA), computer-selected torsion bar, nitrogen gas-pressurized shock absorbers, stabilizer bar	Independent Short- and Long-Arm (SLA), computer-selected torsion bar, nitrogen gas-pressurized shock absorbers, stabilizer bar
Rear	Semi-floating type axle with 3.55 axle, 2-stage variable-rate computer-selected leaf springs, nitrogen gas-pressurized shock absorbers, stabilizer bar	Semi-floating type axle with limited-slip 3.73 performance axle (includes Trailer Tow Prep Pkg.), 2-stage variable-rate computer-selected leaf springs, nitrogen gas-pressurized shock absorbers, stabilizer bar

STEERING	V-6	V-8
	Power-assisted rack-and-pinion, 17:1 ratio; turning diameter 37.3 ft. (curb-to-curb)	

CAPACITIES	V-6	V-8
Fuel tank	21.0 gal.	
Cargo volume (cu. ft.) with rear seat up	43.5	
Cargo volume (cu. ft.) with rear seat down	80.2	

DIMENSIONS (IN INCHES)

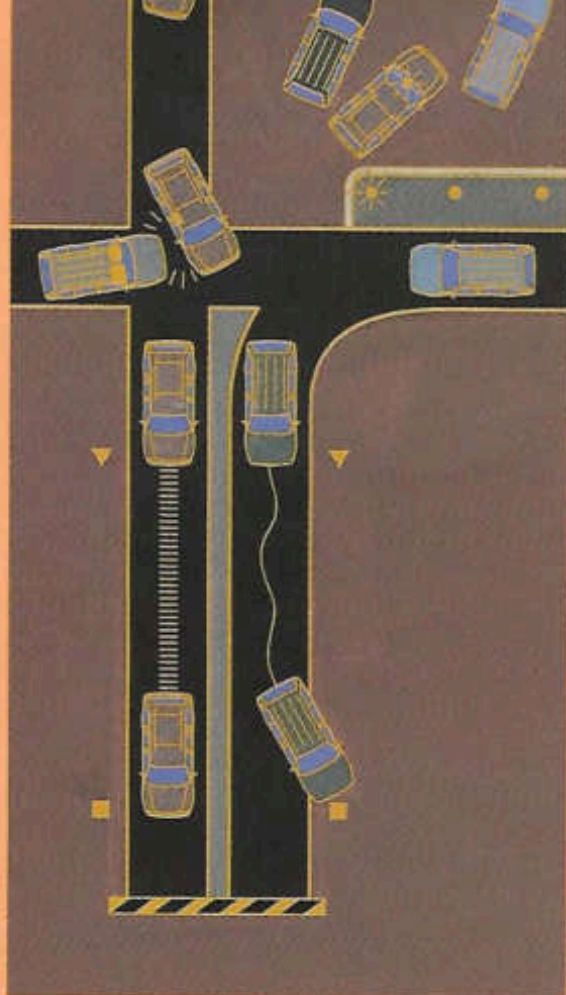
Wheelbase	111.6	Axle clearance
Length	190.1	Headroom, front/rear
Width	70.2	Legroom, front/rear
Height (4x2/4x4)	70.5/70.3	Shoulder room, front/rear
Track, front/rear	58.5/58.5	Hiproom, front/rear
Overhang, front/rear	33.9/44.0	

TOWING CAPACITIES

POWERTRAIN	DRIVETRAIN	AXLE RATIO**	MAX TOWING CAPACITY***
V-6	4x2	3.55/3.73	4,500
V-6	Control-Trac	3.55/3.73	4,500
V-8	4x2	3.73	4,500
V-8	AWD	3.73	4,500

FUNCTIONAL FEATURES

Second Generation dual air bags	OPTIONAL
Side air bags	OPTIONAL
100,000-mile scheduled tune-up intervals***	OPTIONAL
Brake/shift interlock	OPTIONAL
Battery saver	OPTIONAL
SecurLock® passive anti-theft system	OPTIONAL
Underbody-mounted full-size spare tire	OPTIONAL
Speed-sensitive intermittent windshield wipers	OPTIONAL
Solar tint glass on windshield and front door windows	OPTIONAL
Privacy glass™ on rear quarter, rear door and liftgate windows	OPTIONAL
Skid plates (with 4x4 and AWD only)	OPTIONAL
Full-time All-Wheel Drive (AWD) (V-8 only)	OPTIONAL
4x4 Control-Trac (V-8 only)	OPTIONAL
Engine block heater	OPTIONAL
Remote Keyless Entry system with 2 key fobs	OPTIONAL
3.73 limited-slip rear performance axle includes Trailer Tow Prep Pkg. (Std. on V-8/Opt. on V-6)	OPTIONAL



A new feature, Reverse Sensing System, is now available. When you're backing up it detects objects behind you and warns you of most objects within 5.0 feet.

Not only does Mountaineer come with Second Generation dual air bags, but side air bags are now available for an extra measure of safety. Always wear your seat belt and secure children in the rear seat.

Four wheel disc ABS brakes come standard. They help maintain steering control while braking on most slippery road surfaces.

To make your vehicle even more versatile, many dealer-installed accessories are available including a handy cargo net, trailer hitch, cargo organizer, and several different roof racks to accommodate skis, snowboards and bikes.

CONVENIENCE GROUP

- 8-way sport bucket seats with 6-way power driver's seat
- Remote Keyless Entry system with 2 key fobs
- Premium AM/FM stereo/cassette/single CD player/Premium Sound System with Personal Audio System
- Auto-dimming electrochromic rearview mirror with automatic delay off headlamps
- Electronics Package includes: Driver's side keyless entry keypad, auto-lock/relock system and puddle lamps on outside mirrors
- High-Series floor console includes: Rear fan/audio controls with telephone jacks, dual front and rear cup holders, tissue dispenser, pop-up armrest with storage and ash cup
- Overhead console includes: Digital compass, outside temperature display, 2nd-row reading lamps with dome light and storage bin (bin selected if ordered with power moonroof)

LUXURY GROUP

- 8-way power front sport bucket seats with leather seating surfaces
- Appearance Package
- BOSE® Audio System with Personal Audio System

PRODUCT CHANGES

Following publication of this brochure, certain changes in standard equipment, options, prices and the like, or product delays may have occurred which would not be included in these pages. Your Mercury dealer is your best source for up-to-date information. Mercury reserves the right to change product specifications any time without incurring obligations.

— Standard Feature; OPT=Optional Feature; GRP=Included in Convenience Group; DLR=Dealer Installed Option.

Engine/axle ratio combinations shown may not be available in all areas. All maximum trailer weights shown must be reduced by passenger and cargo weight in the towing vehicle. Additional equipment may be required. For specific information on recommended or required equipment and frontal area restrictions, see your dealer. Under normal driving conditions with routine fluid/filter changes.

Disclaimer: 1999 EPA mileage estimates were unavailable when this brochure was printed.

For more information on Mercury vehicles visit the web site at www.mercuryvehicles.com



All Mountaineers will be classified as Emissions Vehicles (EVs), emitting lower smog forming emissions than most passenger cars on the road today.

The Mercury Cycling Team is on the streets and will be participating in races from coast to coast. Look for the pro cycling team in your area.

Ford Credit provides the convenience of one-stop shopping with a simple-to-understand purchase. Carpet Lease programs available right at the dealer. For more information, ask your dealer for details or visit us on the web at www.fordcredit.com

Imagine a comprehensive program

dedicated to your complete satisfaction.

ROADSIDE ASSISTANCE

MERCURY VEHICLE LIMITED WARRANTY

MERCURY CUSTOMER ASSISTANCE CENTER


SPECIAL DELIVERY PROCESS

OWNER DELIVERY PROCESS

WHAT IS THE MERCURY COMMITMENT?

It is the extra comforts of ownership,
exemplified in a comprehensive benefits
package. It is the assurance that meeting your
driving needs will always be our
ultimate objective.

Ask your dealer for complete details and a copy
of the limited warranty.

Imagine yourself in a Mercury 

LITHO IN USA (800) 7-96 P-8617 Buckle up—*together we can save lives.*



50%

TOTAL RECYCLED FIBER
IN THE PRODUCT

