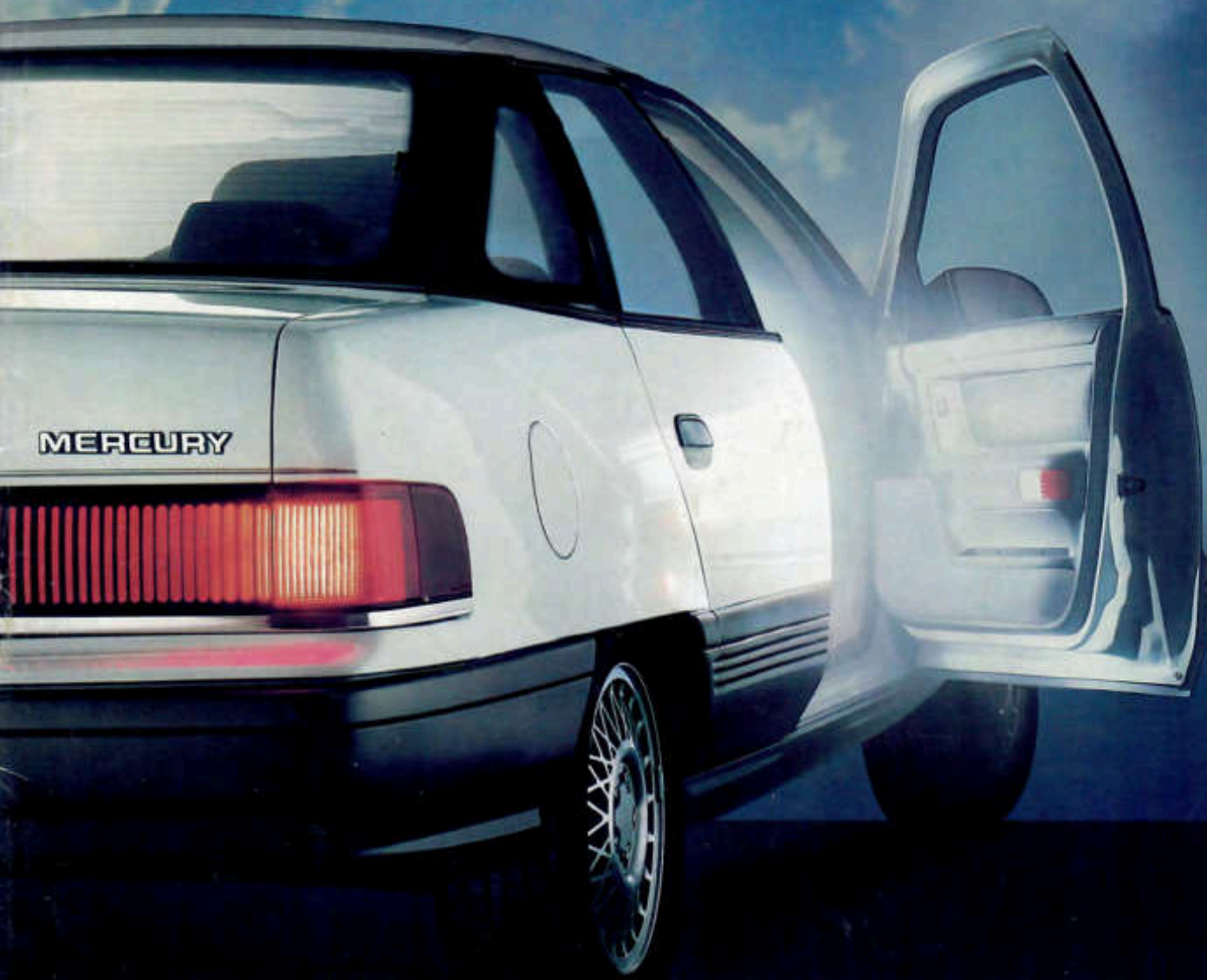
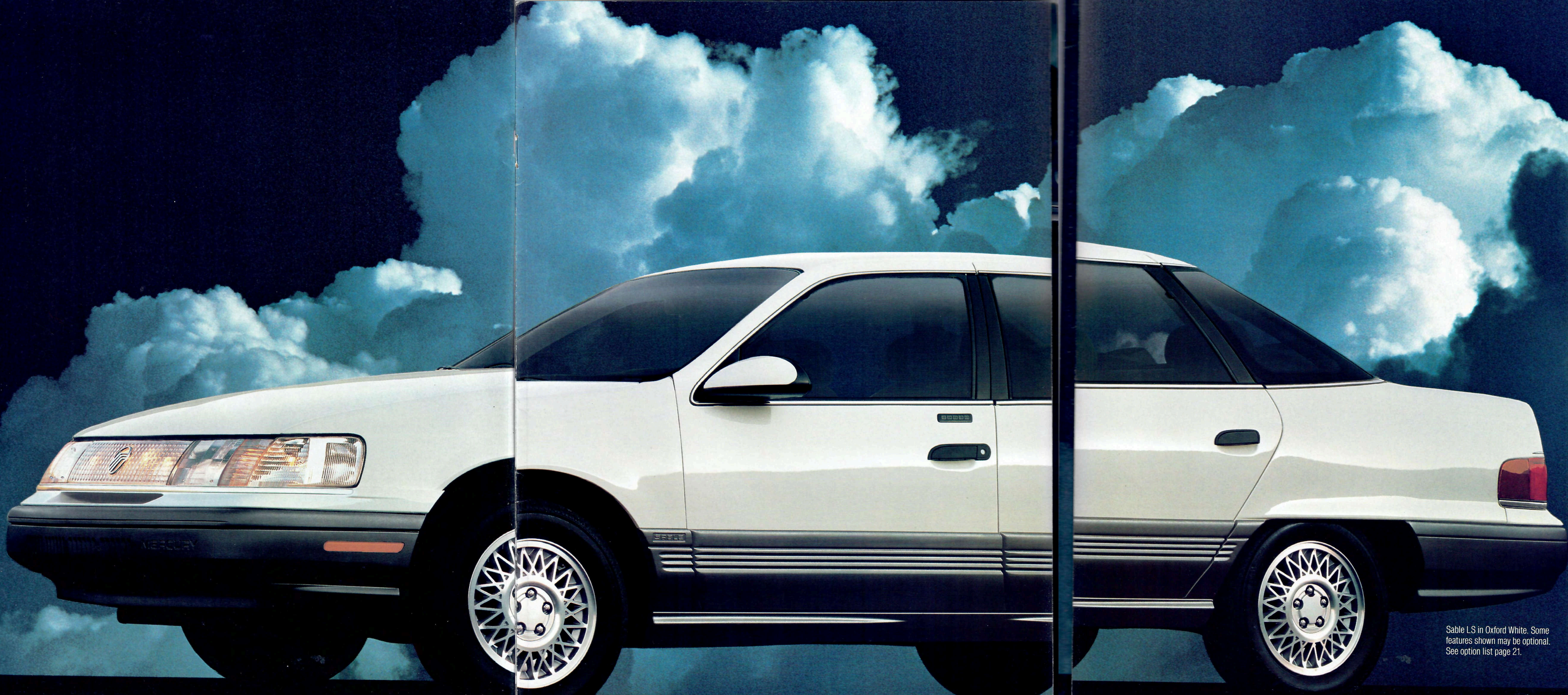


# MERCURY '89

S A B L E





Sable LS in Oxford White. Some features shown may be optional. See option list page 21.

## **MERCURY SABLE. THE DISTINCTIVE SHAPE OF COMFORT AND CONTROL.**

Comfort. Control. Uniting these two essential qualities not only gave Sable its readily recognizable shape, but also resulted in a car that's exceptionally rewarding to drive and to own.

By managing the flow of air around it, Sable's shape helps you control the car. It also lessens wind noise, adding to the comfort of driver and passengers. It serves as the perfect complement to Sable's impressive power and handling attributes which are engineered to place control securely in your hands.

Inside, Sable has been carefully designed to accommodate you and your passengers. From seating for six adults to the spectacular Ford JBL Audio System option, Sable is a very comfortable place to be.

Sable is an automobile created by great thought and attention to detail. On the following pages, we will give you a close, personal look at the automobile that has helped shape the future of automotive design.

Mercury Sable. Where comfort and control are one.



Shown here is the LS interior with the optional leather seating surfaces in Shadow Blue. Three-point safety belts for front and rear seat outboard passengers are standard on all Sables. Some features shown here may be optional. See option list page 21.



SABLE

HEADLAMP

PANEL DIM

BRAKE RELEASE

RPM X1000  
MPH km/h  
UNLEADED FUEL ONLY

7:55  
MODE  
SET  
RESET  
W/S DE-ICE  
ON OFF

7.0  
CLIMATE CONTROL  
OUTSIDE TEMP  
A/C  
DOOR  
WIND  
CIRC

VOLUME SCAN  
4 SEEK P  
TUNE  
POWER  
BASS  
TREBLE  
BALANCE  
FADE  
REW FF  
EJECT  
PLAY  
STOP

Sable LS instrument panel. Some features shown here may be optional. See option list page 21.



**SABLE WAGON. AN ATTRACTIVE SOLUTION  
TO YOUR PRACTICAL NEEDS.**

Sable wagon is a refreshing blend of style and performance. With front-wheel drive, fuel-injected V-6 power, a four-speed automatic transmission and a fully independent suspension, Sable wagon doesn't ask you to compromise on driving enjoyment. It possesses the spirited feel and exemplary road manners of a Sable sedan.

And when you need it, Sable wagon comes through with the kind of room and versatility you look for in a wagon. (See the following page for a look inside Sable wagon.) Specific wagon options include a rear-facing third seat, a built-in picnic tray, a cargo area cover (to keep items out of sight) and a rear wiper/washer.

Mercury Sable LS wagon in Deep Titanium Clearcoat Metallic. Some features shown may be optional. See option list page 21.



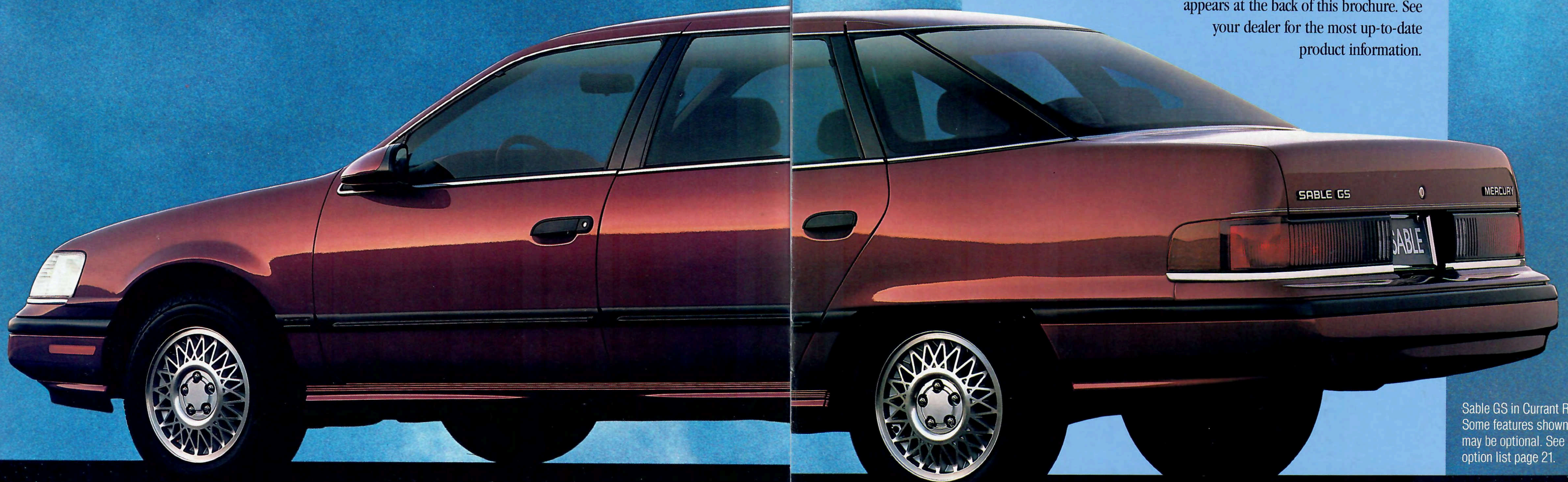
Sable wagon's rear seatback is split 60/40 so you can fold all or just part of it down. Shown here is the optional picnic tray. Other features shown may also be optional. See option list page 21.

## **SABLE GS: A BEAUTIFUL WAY TO RAISE YOUR STANDARDS.**

GS models come standard with an automatic transmission, power brakes, air conditioner, interval wipers, electronic AM/FM stereo radio, tinted glass, power rack-and-pinion steering and more.

There is also an interesting list of optional equipment. We've grouped some popular options together into Preferred Equipment Packages. For example, the Sable GS sedan can be ordered with Preferred Equipment Package 451A. It includes an AM/FM stereo radio with cassette, six-way power driver's seat, tilt steering wheel, fingertip speed control, electric rear window defroster, power windows, light group, power lock group and 15-inch cast-aluminum wheels. Ordering these popular items this way is easy and saves money compared to ordering them individually.

Information on all standard and optional features appears at the back of this brochure. See your dealer for the most up-to-date product information.



Sable GS in Currant Red. Some features shown may be optional. See option list page 21.

## FEATURES AS SOPHISTICATED AS SABLE ITSELF.

In addition to Sable's impressive list of standard features, there are several options you may want to consider. One is the optional power moon roof available on Sable sedans. The push of a button opens up your Sable to the desired amount of fresh air, sun or stars.

While Sable comes standard with an electronic AM/FM stereo radio, there are four sound system options you may upgrade to. They are, an electronic AM/FM stereo radio with cassette, a Premium Sound package which includes a 60-watt power amplifier and a total of six speakers, a high level electronic AM/FM stereo radio with cassette audio system which includes AM stereo, four-channel amplifier with 80 total watts RMS and a total of six speakers. Or, go all out

and order the fabulous Ford JBL Audio System.\* It includes a four-channel premium amplifier with a total of 140 watts RMS and ten speakers. It delivers sound that rivals that of many home stereo systems.

Evidence of just how much thought went into designing Sable to be not only beautiful to look at but also easy and comfortable to use is evident in even the subtlest ways, such as the efficient design of Sable's door panel controls. Easy to reach and use are the car's door handles, as well as controls for power mirrors, door locks and windows.

Another good example of Sable's detailed design is the liftgate on the wagon model. It opens at the point above the bumper line for ease of loading and unloading cargo. And the flip-up window allows access to the rear cargo area without opening the entire liftgate.



The power moon roof lets in as much fresh air, sun or stars as you wish with the push of a button.

Wagon liftgate features a handy flip-up window.



Ergonomically designed controls for power windows.

Dread scraping ice off windshields? The optional Insta-Clear® heated windshield uses a transparent silver and zinc oxide film to conduct electricity over the windshield surface. It generates enough heat to remove a tenth of an inch of windshield frost at zero degrees Fahrenheit within only three minutes. A standard car defroster requires 15 minutes or more to accomplish the same task.

Many other comfort and convenience features may be ordered with your Sable, such as the autolamp on/off delay system. It can be programmed to leave the headlamps on for up to three minutes after you have shut off the ignition. Or, choose Sable's keyless entry system to gain access to the passenger or luggage compartment by entering a simple code on a door-mounted keypad. Of course, you can bypass it any time with your key. An automatic climate control system also is available which will keep the passenger compartment at a preferred temperature.

And for those who prefer, Sable may be ordered with a digital instrument cluster. This unit gives bright, clear electronic readouts of important information such as speed, fuel economy, engine RPM, miles travelled and much more. Refer to the back of this brochure for information on all of the features available with Sable.

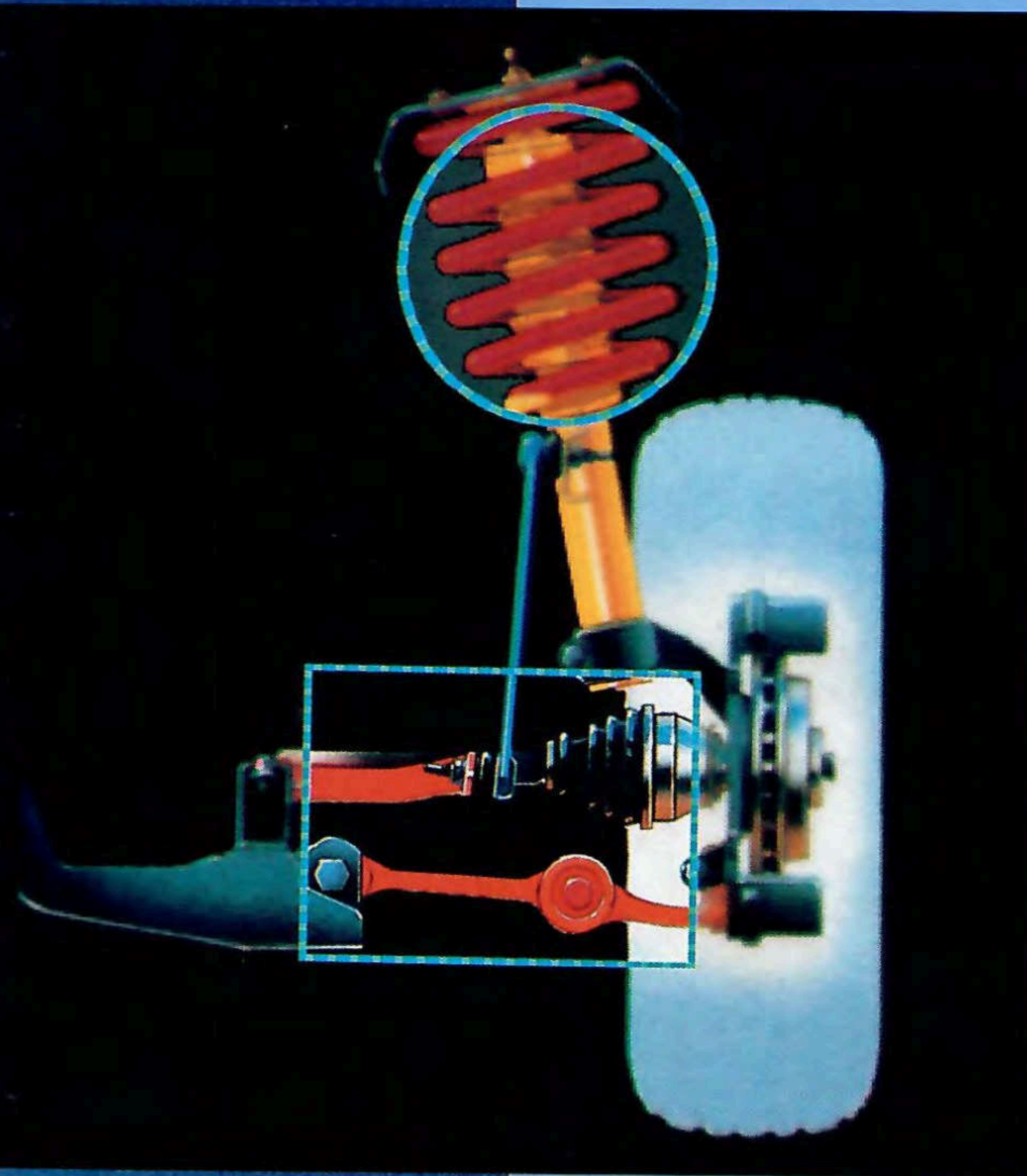
An optional digital instrument cluster provides easy-to-read information.



## ENGINEERED FOR COMFORT AND CONTROL.

The sophisticated ride you'll experience in every Sable model is the culmination of years of suspension research and development. It's been designed to insulate you from the harshness of the road but not isolate you from the

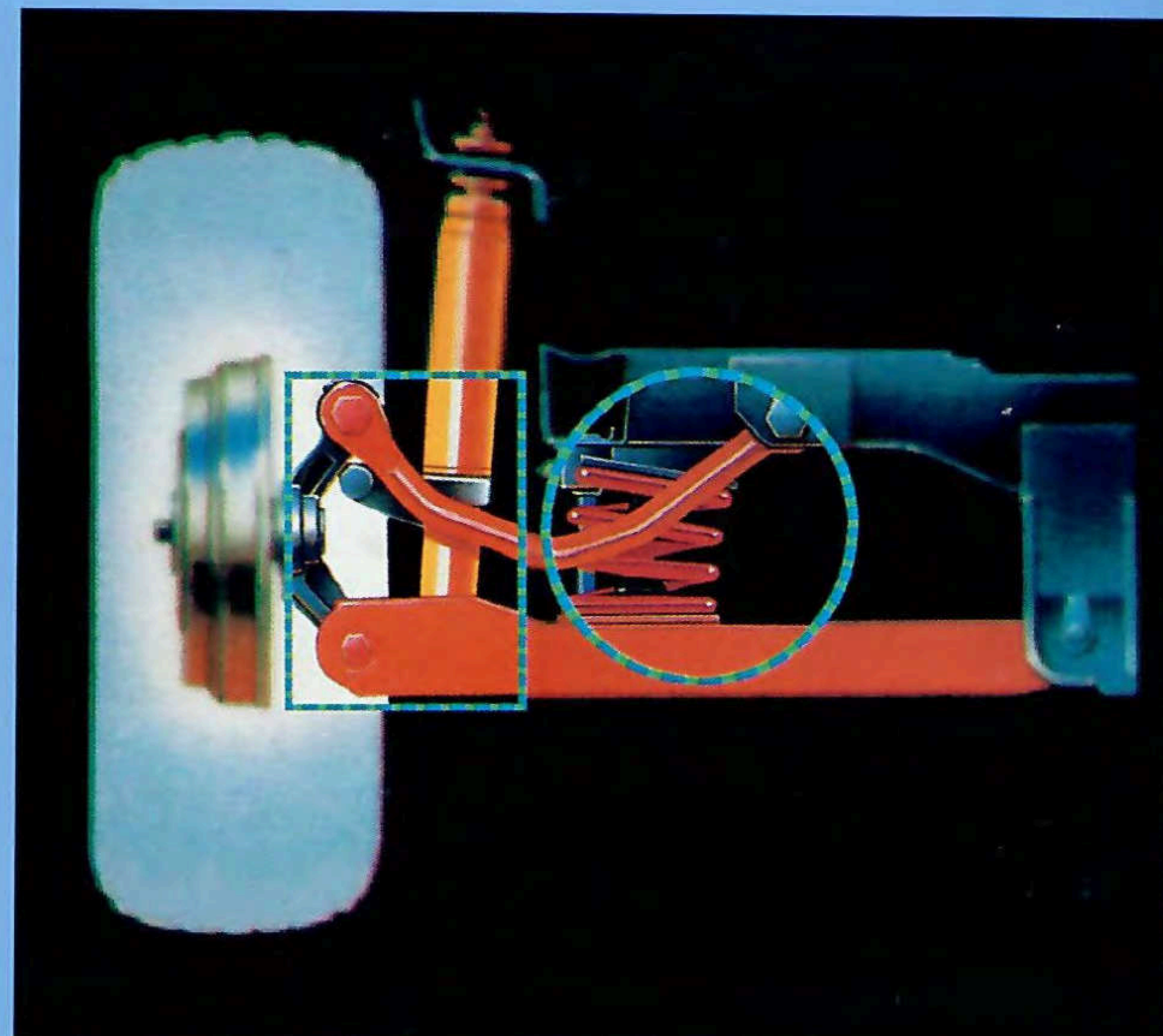
feel of it. Sable's suspension is fully independent — something once found only on expensive sports cars and touring sedans. Up front in both the sedan and wagon models is a system comprised of MacPherson nitrogen gas-pressurized struts with coil springs, lower control arms and a stabilizer bar. The sedan's rear suspension features an independent parallel four-bar arm design with MacPherson nitrogen gas-pressurized struts, coil springs and a stabilizer bar. To afford greater spaciousness in the rear cargo area, the wagon's independent rear suspension features short and long arms, nitrogen gas-pressurized shocks, variable-rate coil springs and a stabilizer bar. The result is a wagon that handles like a great road car.



Sedan and wagon models share the same sophisticated front suspension, comprised of independent MacPherson nitrogen gas-pressurized struts with coil springs, lower control arms and stabilizer bar. (Far left)

In the rear, sedan models use an independent suspension made up of parallel four-bar arms with MacPherson nitrogen gas-pressurized struts, coil springs and stabilizer bar. (Far left)

The wagon's independent rear suspension features short and long arms, nitrogen gas-pressurized shocks, variable-rate coil springs and stabilizer bar. (Left)

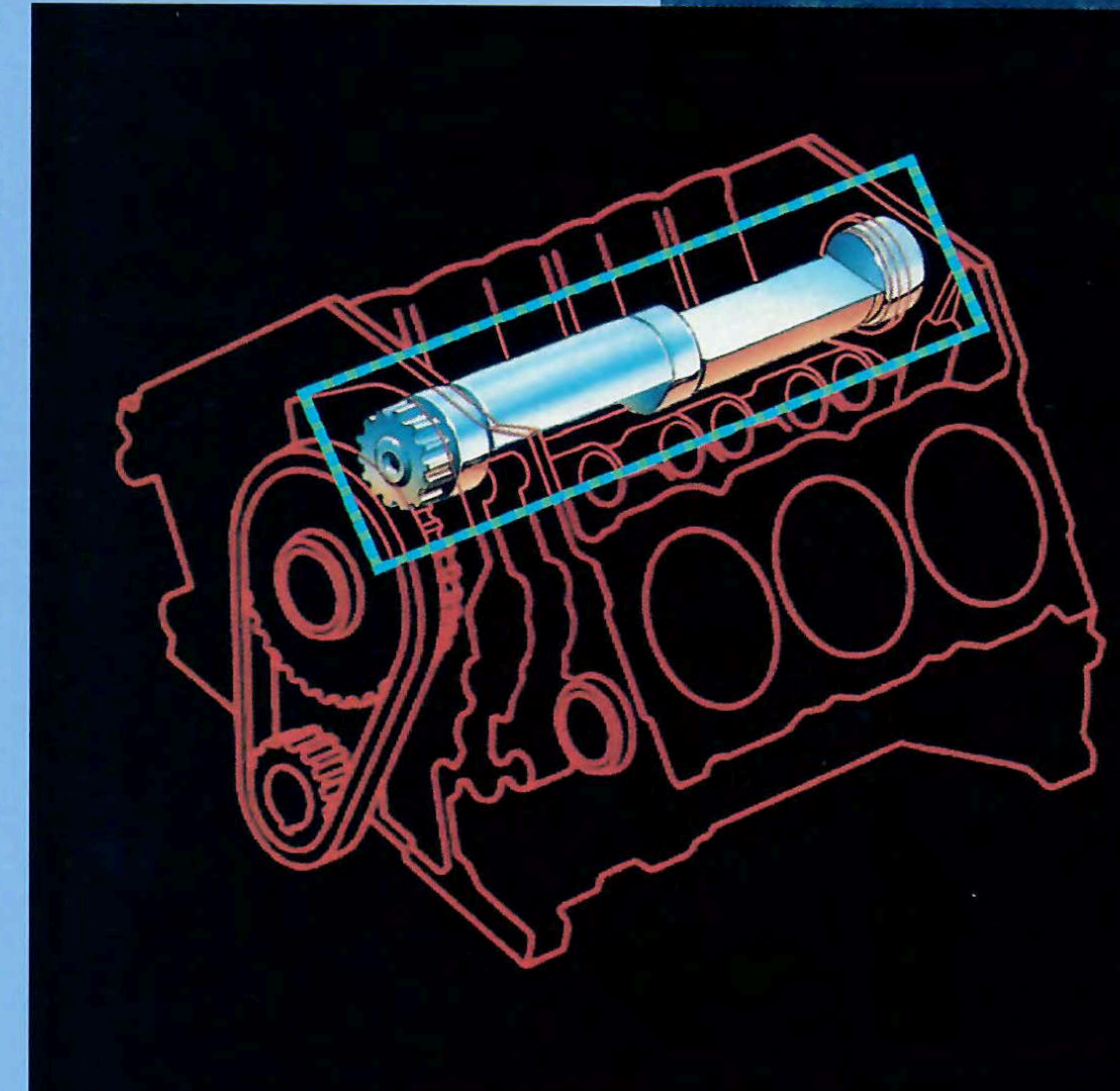


Choose Sable with either the standard 3.0-liter or an optional 3.8-liter V-6. Both engines benefit from the efficiency of electronic multi-port fuel injection (sequential on the 3.8-liter). It delivers just the right amount of fuel to each cylinder at exactly the moment needed to attain maximum power, smoothness of operation and fuel economy.\* Both engines are managed by the sophisticated EEC-IV electronic engine control system. With the ability to process 250,000 operations per second, this on-board computer continuously monitors and fine-tunes the engine to maximize responsiveness, driving smoothness and fuel economy.\* It even adjusts engine operation for outside temperature, altitude and other operating conditions. The 3.8-liter engine also features a balance shaft. This shaft runs longitudinally within the engine to reduce vibration and add to smooth operation.

### Selected Safety Features

The following is a partial list of the safety features incorporated into every Sable: Safety belts for all seating positions, including three-point safety belts for front and rear seat outboard occupants

- Child safety seat tether anchors behind the rear seats
- Child-proof rear door locks
- Flame-resistant interior materials
- Energy-absorbing materials in the dashboard, armrests, front seatback tops and sun visors
- Impact-absorbing laminated safety glass in the windshield
- Safety-designed radio control knobs and pushbuttons
- Inside rearview mirror designed to yield upon impact
- Energy-absorbing steering column
- Front pillars and roof designed to meet a static force test equal to 5,000 pounds or 1½ times the car's weight
- High strength steel beams in each door designed to withstand 7,000-pound push test
- Door latches designed to withstand a push-open load in excess of 2,000 pounds to help keep doors closed in the event of an impact
- All brake lines are corrosion resistant.



Sable's optional 3.8-liter V-6 engine incorporates a balance shaft that runs longitudinally within the engine to reduce vibration and encourage smooth operation.

## SELECTED OPTIONAL AND STANDARD FEATURES.

ENGINE		
Type	3.0L V-6 60 degree OHV	3.8L V-6 90 degree OHV
Displacement	3.0 liters	3.8 liters
Horsepower (SAE net)	140 @ 4800 rpm	140 @ 3800 rpm
Torque (SAE net)	160 lb-ft @ 3000 rpm	215 lb-ft @ 2200 rpm
Fuel delivery	Multi-port electronic fuel injection	
Compression ratio	9.3:1	9.0:1
Engine control	EEC-IV, electronic engine control	
TRANSMISSION		
Automatic	Four-speed automatic overdrive with electronically controlled converter bypass clutch and torque converter lock-up in third and fourth gears	
SUSPENSION		
Front	Independent MacPherson nitrogen gas-pressurized struts with coil springs, tension struts, stabilizer bar and lower control arm (sedan and wagon)	
Rear	Sedan — Independent parallel four-bar arm design, nitrogen gas-pressurized struts, stabilizer bar and coil springs Wagon — Independent short and long arm, nitrogen gas-pressurized shocks, stabilizer bar and variable-rate coil springs	
STEERING		
Type	Power-assist rack-and-pinion with 15.25:1 overall ratio	

Based on official 1989 MVMA specifications.

BRAKES		
Type	Dual hydraulic (diagonally linked front to rear) with power assist	
Front	10.1-inch disc (sedan and wagon)	
Rear	8.9-inch drum (sedan) 9.8-inch drum (wagon)	
Brake swept area	282.8 sq. in. (sedan) 309.1 sq. in. (wagon)	
DIMENSIONS (in inches)		
Wheelbase	SEDAN	WAGON
Overall length	192.2	193.2
Overall width	70.8	70.8
Overall height	54.3	55.1
Track, front/rear	61.6/60.5	61.6/59.9
Headroom, front/rear	38.3/37.6	38.6/38.4
Legroom, front/rear	41.7/37.1	41.7/36.6
Shoulder room, front/rear	57.5/57.5	57.5/57.5
Hiproom, front/rear	55.0/55.6	55.0/56.4
CAPACITIES		
Cargo volume (cu. ft.)	18.5	45.6/81.0 (seatback down)
Fuel	16.0 gal., 18.6 gal. with optional extended range tank	
Oil	4.5 qt.	
Engine coolant	10 qt. on 3.0L V-6 12.1 qt. on 3.8L V-6	
Curb weight	3128 lbs.	3246 lbs.

MERCURY SABLE	GS		LS	
	SEDAN	WAGON	SEDAN	WAGON
FUNCTIONAL FEATURES				
Heated Insta-Clear® windshield	0	0	0	0
Tinted glass	S	S	S	S
Electric rear window defroster	0	0	0	0
Side window demisters	S	S	S	S
Rear wiper/washer	—	0	—	0
Interval windshield wipers	S	S	S	S
Warning lights for washer fluid, headlamp or taillamp outage, low fuel, low oil, door ajar	—	—	S	S
Extended range fuel tank (18.6 gal.)	0	0	0	0
Stainless steel extended life exhaust system	S	S	S	S
Load floor tie-down hooks	—	S	—	S
Cargo net	S	S	S	S
Extra-quiet sound insulation	S	S	S	S
Rear child-proof locks	S	S	S	S
Heavy-duty battery	0	0	0	0
Audible brake wear sensors	S	S	S	S
Heavy-duty suspension	0	0	0	0
EXTERIOR FEATURES				
Five-mph impact bumpers front/rear	S	S	S	S

S—Standard feature 0—Optional feature

	GS		LS	
	SEDAN	WAGON	SEDAN	WAGON
Lower door and rocker panel protective urethane coating	S	S	—	—
Lower bodyside cladding/protection	—	—	S	S
Dual power mirrors	S	S	S	S
Aero halogen headlamps	S	S	S	S
Aerodynamically styled roof-rack	—	S	—	S
Bodyside accent stripes	0	0	0	0
INTERIOR COMFORT AND CONVENIENCE FEATURES				
Air conditioning	S	S	S	S
Air conditioning with electronic automatic temperature control	0	0	0	0
Power moon roof	0	—	0	—
Light group: Includes dual-beam dome light (except with moon roof), engine compartment light, instrument panel courtesy light, headlamps-on chime and liftgate-activated cargo light (wagon)	0	0	S	S
Automatic parking brake release	0	0	S	S
Keyless entry system	0	0	0	0
Rear cargo area cover	—	0	—	0
Leather-wrapped steering wheel	0	0	0	0
Twin comfort seats with dual recliners	S	S	S	S
Individual bucket seats with console	0	0	0	—
Front-seat power lumbar supports	—	—	S	S
Four-way front seat headrests	—	—	S	S
Six-way power driver's seat	0	0	0	0
Six-way power driver and passenger seats	0	0	0	0

	GS		LS	
	SEDAN	WAGON	SEDAN	WAGON
Vinyl seating surfaces	0	0	—	—
Leather seating surfaces	—	—	0	0
60/40 split fold-down rear seat	—	S	—	S
Rear-facing third seat	—	0	—	0
Front door map pockets	S	S	S	S
Dual visor mirrors	S	S	—	—
Dual illuminated visor mirrors	0	0	S	S
Rear seat center fold-down armrest	S	S	S	S
Rear seat outboard four-way headrests	S	—	S	—
Fully trimmed luggage compartment with light	S	S	S	S
Picnic tray	—	0	—	0
Front and rear floor mats	0	0	0	0
Autolamp on/off delay system	0	0	0	0
Digital clock	S	S	S	S
Fingertip speed control	0	0	0	0
Tilt steering wheel	0	0	0	0
Power windows	0	0	S	S
Power lock group: Includes door locks, decklid or liftgate, and fuel-filler door	0	0	0	0
SOUND SYSTEMS				
Electronic AM/FM stereo with four speakers (may delete for credit)	S	S	S	S
Electronic AM/FM stereo with cassette and four speakers	0	0	0	0
Premium Sound—power amplifier, total 60 watts RMS and two additional speakers (six total)	0	0	0	0

	GS		LS	
	SEDAN	WAGON	SEDAN	WAGON
High-level electronic AM stereo/FM stereo cassette audio system with power amplifier, total 80 watts RMS and total of six speakers	0	0	0	0
Ford JBL Audio System—four-channel premium amplifier with 140 total watts RMS and upgraded speakers (total of ten)	0	—	0	—
Power antenna	0	0	0	0
INSTRUMENTATION				
Analog instrumentation with speedometer, tachometer, engine coolant temperature gauge, fuel gauge and trip odometer	S	S	S	S
Electronic instrument cluster with speedometer, tachometer, engine coolant temperature gauge, fuel gauge, trip odometer, fuel/distance computer and Diagnostic Systems Scanner	0	0	0	0
WHEELS AND TIRES				
P205/70R14 black sidewall with 14-inch deluxe wheel covers	S	S	S	S
P205/70R14 white sidewall	0	0	0	0
P205/65R15 black sidewall	0	0	0	0
P205/65R15 white sidewall	0	0	0	0
14-inch polycast wheels	0	0	0	0
15-inch cast-aluminum wheels	0	0	0	0
15-inch deluxe wheel covers	0	0	0	0
Conventional size spare tire	0	0	0	0

To make ordering easy we've grouped certain options together into the Preferred Equipment Packages listed below. And priced them to cost you less than if they were purchased separately.\*

GS SERIES	Preferred Equipment Package	
	450A	451A
Fingertip speed control	•	•
Electric rear window defroster	•	•
Power side windows	•	•
Power lock group	•	•
Electronic AM/FM stereo with cassette	•	•
Tilt steering wheel	•	•
Six-way power driver's seat	•	•
15-inch cast-aluminum wheels	•	•
P205/65R15 BSW tires	•	•
Light group	•	•

LS SERIES	Preferred Equipment Package		
	460A	461A	462A
Tilt steering wheel	•	•	•
Fingertip speed control	•	•	•
Electric rear window defroster	•	•	•
Power lock group	•	•	•
P205/65R15 BSW tires	•	•	•
Six-way power driver's seat	•	•	•
Leather-wrapped steering wheel		•	•
Front and rear carpet floor mats		•	•
15-inch cast-aluminum wheels		•	•
3.8L EFI V-6 engine		•	•
Power radio antenna		•	•
Bodyside accent stripes		•	•
Electronic AM/FM stereo with cassette		•	•
Premium Sound System		•	•
High level electronic AM/FM stereo cassette audio system			•
Automatic air conditioner			•
Autolamp on/off delay system			•
Keyless entry			•
Electronic instrument cluster			•

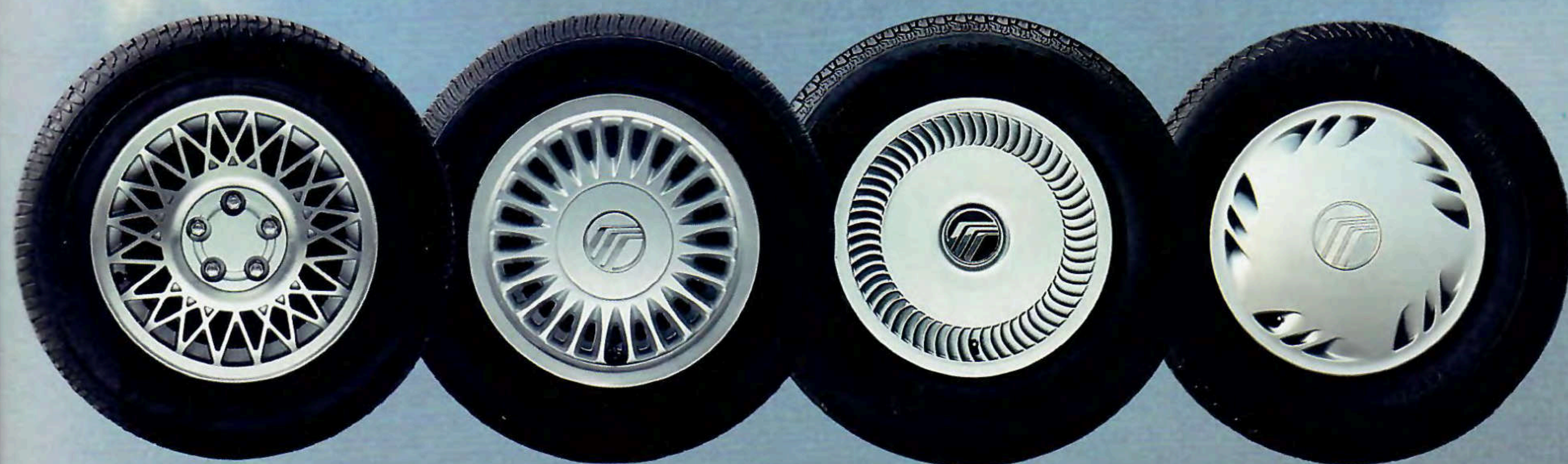
\*Specific content is subject to change throughout model year. Consult your dealer for the most up-to-date information.

SABLE COLORS
<b>Standard Exterior Colors</b>
Black
Currant Red
Oxford White
<b>Optional Clearcoat Colors</b>
Light Titanium Clearcoat Metallic
Currant Red Clearcoat Metallic
Light Crystal Blue Clearcoat Metallic
Deep Titanium Clearcoat Metallic
Crystal Blue Clearcoat Metallic
Cinnabar Clearcoat Metallic*
Twilight Blue Clearcoat Metallic
Rose Quartz Clearcoat Metallic*
Light Sandalwood Clearcoat Metallic
Medium Sandalwood Clearcoat Metallic

Standard Interior Colors
Titanium
Shadow Blue
Currant Red
Light Sandalwood
Cinnabar*

\*Not available on Sable wagon models.

Left to right: 15-inch cast-aluminum wheel, 14-inch polycast wheel, 15-inch deluxe wheel cover, 14-inch deluxe wheel cover.



Customer satisfaction with Mercury cars may be attributed to the personalized attention given by the sales and service staffs at Lincoln-Mercury dealerships and to the Lincoln-Mercury Quality Commitment program. Its goal is to achieve outright industry leadership in customer satisfaction. We want Lincoln-Mercury customers to be the most pleased in the entire automotive industry. An integral part of the Lincoln-Mercury Quality Commitment is the 6-year/60,000-mile powertrain and 6-year/100,000-mile corrosion warranty. The warranty is limited, and certain restrictions and a deductible apply. Ask your Lincoln-Mercury dealer for a copy of the warranty and take time to read it. Genuine Ford and Motorcraft original equipment replacement parts are engineered and manufactured to Ford's high specifications.

**Motorcraft**  
QUALITY PARTS

They're your best assurance of quality and long-term satisfaction because these replacement parts meet the same high standards as those installed in production. The optional Ford Extended Service Plan covers selected components on new Mercury cars for longer than the vehicle's basic warranty. The cost is so moderate for the protection offered that it could pay for itself the first time it is needed. Ask your Lincoln-Mercury dealer for complete details of the plan, which is available on cars sold and normally operated in the 50 United States and Canada.



Participating Lincoln-Mercury dealers are now offering the Life-



on your Mercury Sable for as long as you own it. This means that you pay for a covered repair once and never again. If it ever has to be fixed again, the repairing dealer will fix it free. Free parts. Free labor. Ask your Lincoln-Mercury dealer for a copy of this limited warranty, and take time to read it.

**Ford-paid repair programs after the warranty period** Sometimes Ford Motor Company offers adjustment programs to pay all or part of the cost of certain repairs. These programs are intended to assist owners and are in addition to the warranty or to required recalls.

**Technical Service Bulletins** All vehicles need repairs during their lifetime. Sometimes Ford issues Technical Service Bulletins (TSBs) and easy-to-read explanations describing unusual engine or transmission conditions which may lead to costly repairs, the recommended repairs and new repair procedures. Often a repair now can prevent a more serious repair later. Ask Ford Motor Company or your Lincoln-Mercury dealer about Ford-paid repair programs and TSBs relating to your Mercury Sable.

To get copies of materials for your Sable or the vehicle of interest to you, call Ford toll-free at 1-800-241-3673. In Alaska or Hawaii, call 1-800-241-3711. In Georgia, call 1-800-282-0959, or write Ford at: Ford Customer Information System, Post Office Box 95427, Atlanta, GA 30347. Please include your name and address, year, make, model and vehicle identification number, as well as engine size.

**EPA statement** 1989 EPA mileage estimates were unavailable when this publication was printed. The 1989 Mercury Sable, however, should post good mileage figures. Ask your Lincoln-Mercury dealer for the latest information. **Buckle up— together we can save lives.** Buy or lease your Sable from your Lincoln-Mercury dealer.

Specifications and descriptions used were in effect when this publication was approved for printing.

Lincoln-Mercury Division reserves the right to discontinue options at any time or change specifications, equipment or designs without notice and without incurring obligation.

Standard and optional equipment listed is subject to change. Some features described are optional at extra cost. Some options are required in combination with other options.

Availability of some features may be subject to a slight delay.



# MERCURY

WHERE COMFORT AND CONTROL ARE ONE



DEZO'S GARAGE