



MERCURY | NEW DOORS OPENED

The All-New '08 Mercury Sable





Sable Premier in Silver Birch Metallic. Shown with available equipment.

## SABLE RETURNS WITH STYLE, SUBSTANCE AND SMARTS.

### THE ALL-NEW '08 MERCURY SABLE.

Artfully designed projector-beam headlamps, a distinctive satin finish on the grille, sideview mirrors and door handles, and available 18" chrome-clad wheels (shown) help define Sable's style. Substantive performance comes courtesy of a new 3.5L Duratec V-6 engine that delivers a lively 263 horsepower. And what could be smarter than available Intelligent All-Wheel Drive that helps improve driving performance on any road. Discover all this and more in the 2008 Mercury Sable.





## RATED THE SAFEST FULL-SIZE SEDAN IN AMERICA.<sup>1</sup>

5-STAR CRASH TEST SAFETY RATING. IIHS "TOP SAFETY PICK."<sup>2</sup>

On top of earning the government's highest 5-Star crash test safety rating in 4 categories (including front and side impact), the innovative vehicle structure of the all-new Mercury Sable – equipped with optional AdvanceTrac<sup>®</sup> Electronic Stability Control – also makes it a unanimous "Top Safety Pick" of the Insurance Institute for Highway Safety (IIHS). Sable is *the only vehicle in its class* to achieve both of these honors. Every 2008 Sable features a suite of 6 standard airbags. The Personal Safety System<sup>®</sup> customizes the deployment of the dual-stage front airbags. Front-seat side airbags offer an extra margin of chest protection for the driver and front passenger, while the side-curtain airbags of the Safety Canopy<sup>®</sup> System provide head-protection coverage for outboard-seated occupants in both rows during certain types of side-impact collisions or rollover events. Sable's newly available AdvanceTrac<sup>2</sup> measures oversteer and yaw, and constantly monitors vehicle speed, throttle position and steering wheel angle. If it senses wheel slip or loss of traction, AdvanceTrac applies braking where needed to help keep Sable tracking correctly on its intended path.

<sup>1</sup>Based on both NHTSA 5-Star crash test ratings and with optional electronic stability control, IIHS Top Safety Pick. Star ratings are part of the U.S. Department of Transportation's Safercar.gov program ([www.safercar.gov](http://www.safercar.gov)).

<sup>2</sup>Remember that even advanced technology cannot overcome the laws of physics. It's always possible to lose control of a vehicle due to inappropriate driver input for the conditions.





## AN ELEGANT BALANCE OF STYLE AND COMFORT.

Inside the 2008 Mercury Sable, style and comfort reign. Its new speedometer, tachometer and gauges reflect a modern design theme and are ringed in chrome. Satin-finish cuffs grace the steering wheel, while available new San Macassar woodgrain accents enliven the instrument panel, center stack and center console. On Sable Premier, the available Premier Wood Package (shown) adds the same accents to the shift knob and steering wheel as well. Standard leather-trimmed seats on Sable Premier feature elegant contrast stitching and a front-seat heating feature with 2 heat settings to enhance your comfort whenever the temperature dips. Other comforting features include a 6-way power driver seat (8-way power with memory feature on Sable Premier) and a leather-wrapped steering wheel with convenient cruise control and audio system buttons.



Premier's Audiophile® Sound System can be equipped with an optional voice-activated, Navigation System.



Available SIRIUS Satellite Radio with over 130 channels.



## SYNC Is

- VOICE-ACTIVATED, HANDS-FREE CALLING
- UNINTERRUPTED CONNECTIONS
- RING-TONE SUPPORT\*
- INSTANT VOICE RECOGNITION
- AUTOMATIC PHONE BOOK TRANSFER\*
- MULTILINGUAL INTELLIGENCE
- SUPPORT FOR UP TO 12 PHONES
- ADVANCED CALLING FEATURES

## VOICE-ACTIVATED DIGITAL MEDIA PLAYER

- SUPPORT FOR POPULAR PLAYERS AND FORMATS
- ACCESS BY ARTIST, TRACK, GENRE, ALBUM, PLAYLIST
- USB DEVICE CHARGING
- PLAY "SIMILAR MUSIC" FEATURE
- PODCAST AND AUDIO BOOK SUPPORT
- BLUETOOTH STREAMING AUDIO\*

MERCURY SYNC IS OPTIONAL ON MILAN, MOUNTAINEER AND SABLE.

GO TO SYNCMYRIDE.COM FOR MORE DETAILS.



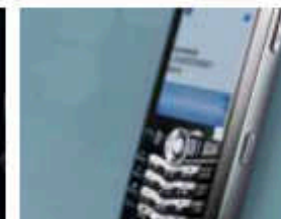
## YOUR MERCURY. YOUR LIFE. NOW IN SYNC.

Mercury SYNC™ developed in association with Microsoft® is a voice-activated, customizable media system that will revolutionize the way you drive. With Microsoft Auto software actually embedded in your Mercury vehicle, SYNC allows you to operate most Bluetooth®-enabled mobile phones\* and most portable digital media players\* using simple voice commands. Play a song? Make a call? Just say the word – in English, French or Spanish – and SYNC responds. The *Detroit Free Press* calls SYNC "the slickest piece of consumer electronics to hit the market this year." *Forbes* magazine placed it on their "Gadgets We Love" list. It's sure to make yours too as soon as you take it for a test drive. You talk. SYNC listens.™

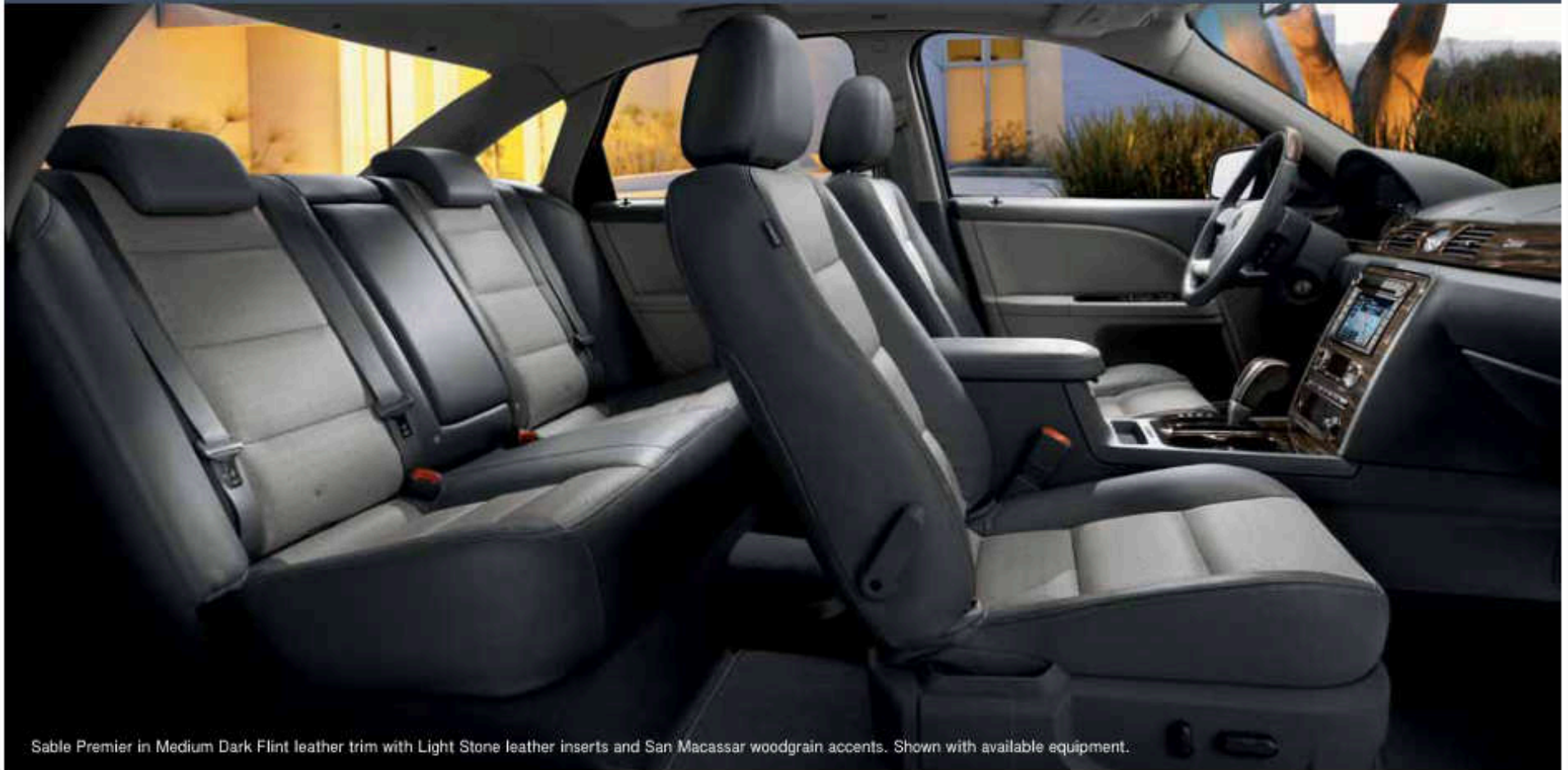
\*Some digital media players and some mobile phones may not be fully compatible. \*Requires a Bluetooth-enabled phone with this capability. Microsoft is a registered trademark of Microsoft Corporation. The Bluetooth word mark is a registered trademark owned by the Bluetooth SIG, Inc. Only use mobile phones and other devices, even with voice commands, when it is safe to do so, and use extreme caution. Driving while distracted may take the driver's focus off the road, which can result in loss of vehicle control, accident and injury. The driver's primary responsibility is the safe operation of the vehicle.



SYNC your Mercury with your digital media player.



SYNC your Mercury with your mobile phone.



Sable Premier in Medium Dark Flint leather trim with Light Stone leather inserts and San Macassar woodgrain accents. Shown with available equipment.

## MAXIMUM SPACE AND FUNCTIONALITY.

The new 2008 Mercury Sable features the most spacious interior in its class.<sup>1</sup> Up front, SUV-like Command Seating™ gives you easy entry and exit, a more upright seating position, and an excellent view of the road ahead. A handy center floor console features a two-tiered storage system. Open the cover to expose the upper tier, with just enough storage for a digital camera or cell phone. Open both the lid and the storage bin for access to a second, larger level that goes nearly to the floor of the vehicle. This hidden storage area offers out-of-sight security. If that's not functional enough, the center console also houses an additional power point to keep electronic items recharged. Those seated comfortably in the rear will enjoy their own advantages. Rear-seat head room is best in class. In Sable Premier, a rear-seat center armrest features 2 cupholders and a small storage compartment. And with the largest trunk in its class, Sable can hold everything you need to bring along for the ride.

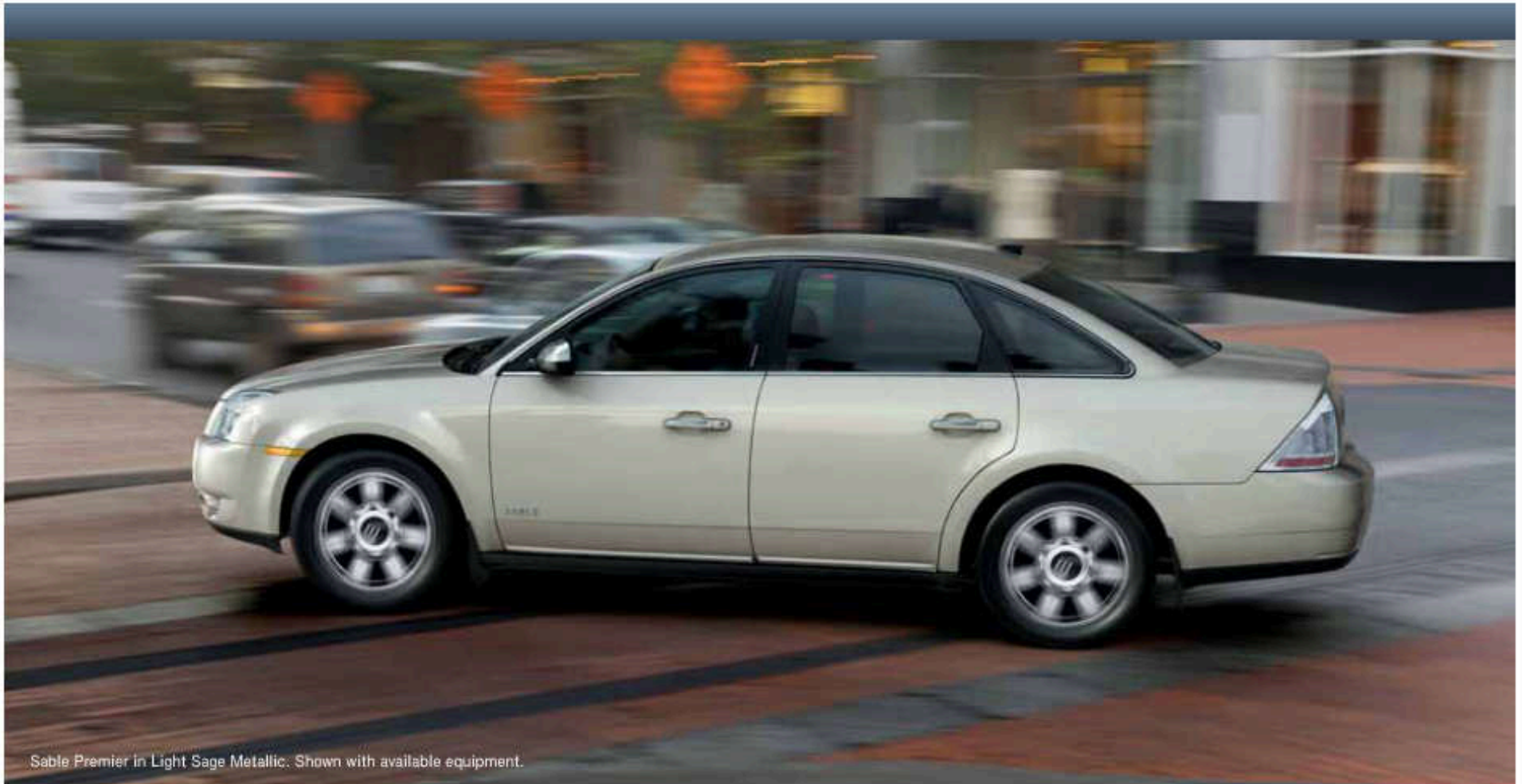
<sup>1</sup>Standard 5-passenger Large Car class.



Standard audio input jack inside the center floor console.



Available Rear-Seat DVD Entertainment System.



Sable Premier in Light Sage Metallic. Shown with available equipment.

## RENEW YOUR ENTHUSIASM FOR SABLE.

### NEW 263-HP V-6 ENGINE SUPPLIES AMPLE POWER.

The all-new Sable has more than enough power to throw any commute into high gear. The advanced technology of Sable's powerful new 3.5L Duratec V-6 engine includes a lightweight die-cast aluminum block, a dual-plenum intake manifold, a high 10.3:1 compression ratio, and intake Variable Cam Timing (iVCT) to help ensure a smooth idle and a broad torque curve. The result? A stirring 263 hp and 249 lb.-ft. of torque. You'll feel it on every open road, appreciate it on every freeway entrance ramp, and look forward to it in every passing situation. Excellent launch and acceleration performance result from Sable's new 6-speed automatic transmission, which uses a wide-ratio gear span to deliver maximum performance.



Sable Premier in Silver Birch Metallic. Shown with available equipment.

## IT'S GOT YOU COVERED.

### INTELLIGENT AWD INSPIRES CONFIDENT DRIVING.

A driving rain can make it slick. Heavy snow makes it almost impassable. And intense heat can soften it up. On the blacktop you travel, road conditions can limit the amount of traction your tires achieve. That's where Sable's Intelligent All-Wheel Drive<sup>1</sup> (AWD) automatically steps in. Constantly monitoring driver and vehicle inputs, Intelligent AWD uses an on-demand electronic center coupler to deliver the appropriate amount of torque to all 4 wheels – anticipating wheel slippage before it even occurs. Under heavy acceleration, for instance, Intelligent AWD proactively allocates torque to the rear wheels *before* the front wheels begin to slip.

In addition to transferring torque from the front axle to the rear, Intelligent AWD works together with standard Traction Control to transfer it side to side on each axle. So even if only one wheel has traction, the system can transfer torque to that wheel to help keep Sable moving. Whether rain, snow or bright sunshine awaits you, Intelligent AWD has you covered.

<sup>1</sup>Available.

**SPECIFICATIONS**
**STANDARD FEATURES**
**POWERTRAIN/FUNCTIONALITY**

	SABLE	PREMIER
3.5L Duratec 35 DOHC V-6 engine with 6-speed automatic transmission	■	■
4-wheel disc Anti-lock Brake System (ABS)	■	■
4-wheel independent suspension	■	■
17" 7-spoke bright-aluminum wheels with P215/60R17 all-season BSW tires	■	■
18" 7-spoke bright-aluminum wheels with P225/55R18 all-season BSW tires		■
Front-wheel drive (FWD)	■	■
Hydraulic power steering	■	■

**EXTERIOR**

	SABLE	PREMIER
Automatic headlamps with wiper-activated headlamp feature		■
Dual chrome exhaust tips	■	■
Fixed-interval windshield wipers	■	■
Front fog lamps	■	■
LED (Light-Emitting Diode) taillamps	■	■
Power sideview mirrors with satin-finish accents	■	■
Power, heated sideview mirrors with satin-finish accents, security approach lamps and memory		■
Satin-finish waterfall grille	■	■
Solar-tinted glass	■	■

**INTERIOR**

	SABLE	PREMIER
Accessory delay for power features	■	■
Adjustable head restraints	■	■
Air conditioning	■	■
Dual-zone Electronic Automatic Temperature Control		■
AM/FM stereo/single-CD player with clock	■	■
Audiophile® Sound System with AM/FM stereo/6-disc in-dash CD changer with MP3 capability and 8 speakers		■
Audio input jack	■	■
Covered, illuminated visor vanity mirrors	■	■
Front clamshell center floor console with armrest, beverage holders and two-tiered storage	■	■
Leather-wrapped steering wheel with cruise control, secondary audio controls, and tilt column	■	■
Mercury SYNC™ – Voice-activated in-vehicle communications and entertainment system		■
Outside temperature display		■
Power door locks with child-safety rear door locks	■	■
Power windows with one-touch-up/-down driver-window feature	■	■
Premium cloth front bucket seats with 6-way power driver seat	■	■
Premium leather-trimmed, heated front bucket seats, 8-way power driver seat with memory and driver and front-passenger manual lumbar support		■
Rear 60/40 split-folding seat with tip-fold-flat feature	■	■
Universal Garage Door Opener	■	■

**SECURITY/SAFETY**

	SABLE	PREMIER
Personal Safety System® for driver and front passenger with dual-stage front airbags, <sup>1</sup> safety belt pretensioners, safety belt energy-management retractors, safety belt usage sensors, driver-seat position sensor, crash severity sensor, restraint control module and Front-Passenger Sensing System	■	■
Front-seat side airbags <sup>1</sup>	■	■
Safety Canopy® System with side-curtain airbags <sup>1</sup> and rollover sensor	■	■
Battery saver	■	■
Belt-Minder® safety belt reminder	■	■
Lower anchors and tether anchors for child-safety seats (LATCH) on rear outboard seat positions	■	■

■ STANDARD □ AVAILABLE

**SECURITY/SAFETY (continued)**

	SABLE	PREMIER
Remote keyless-entry system with 2 integrated key fobs, driver door-mounted keypad and illuminated entry	■	■
Safety belt restraint system with 3-point safety belts in all seating positions and front height-adjustable shoulder belts	■	■
SecuriLock® passive anti-theft ignition system	■	■
Side-intrusion door beams	■	■
SPACE (Side Protection And Cabin Enhancement) Architecture™	■	■
Traction Control	■	■

**AVAILABLE FEATURES**

	SABLE	PREMIER
18" 7-spoke chrome-clad aluminum wheels		□
AdvanceTrac® Electronic Stability Control		□
All-weather floor mats <sup>2</sup>	□	□
Cargo Management System	□	□
Heated driver and front-passenger seats with 2 heat settings <sup>3</sup>	□	□
Intelligent All-Wheel Drive (AWD)	□	□
Leather-trimmed seats	□	□
Mercury SYNC – Voice-activated in-vehicle communications and entertainment system	□	□
Power-adjustable pedals with memory		□
Power moonroof with one-touch-open/-close <sup>4</sup>	□	□
Rear-Seat DVD Entertainment System with 2 sets of wireless headphones <sup>5</sup>		□
Rear-Window Sunshade	□	□
Power Code™ Remote Start System	□	□
Reverse Sensing System	□	□
SIRIUS Satellite Radio	□	□
Voice-activated DVD-based Navigation System <sup>6</sup>	□	□

**AVAILABLE PACKAGES**

	SABLE	PREMIER
Interior Convenience Package – Includes Premium Sound System with AM/FM stereo/6-disc in-dash CD changer with MP3 capability, 8-way power driver seat, power-adjustable pedals, Dual-zone Electronic Automatic Temperature Control, automatic on-off headlamps with wiper-activated headlamps, and outside temperature display	□	□
Premier Wood Package <sup>7</sup> – Includes woodgrain accents on steering wheel and shift knob		□
Security Package – Includes anti-theft perimeter alarm, heated sideview mirrors with security approach lamps, remote perimeter lighting and AdvanceTrac	□	□


 17" 7-SPOKE BRIGHT-ALUMINUM  
STANDARD ON SABLE

 18" 7-SPOKE BRIGHT-ALUMINUM  
STANDARD ON PREMIER

 18" 7-SPOKE CHROME-CLAD ALUMINUM  
OPTIONAL ON PREMIER

<sup>1</sup>Always wear your safety belt and secure children in the rear seat. <sup>2</sup>Dealer-installed Genuine Mercury Accessory. See your dealer for details. <sup>3</sup>Requires leather-trimmed seats and Interior Convenience Package. Available only on Sable array. <sup>4</sup>Not available with Rear-Seat DVD Entertainment System. <sup>5</sup>Not available with power moonroof. <sup>6</sup>Requires Interior Convenience Package when ordered on Sable array. <sup>7</sup>Not available with Light Camel interior.

©2007 SIRIUS Satellite Radio Inc. "SIRIUS," the SIRIUS dog logo and "The Best Radio on Radio" are registered trademarks of SIRIUS Satellite Radio Inc. Audiophile is a registered trademark of Audiophile, Inc.



SPECIFICATIONS

BASE MODEL DIMENSIONS

Wheelbase 112.9"
Length 202.1"
Width (excluding mirrors) 74.5"
Height 61.5"
Front track 64.3"
Rear track 64.4"
Head room (front/rear) 39.6"/38.8"
Leg room (front/rear) 41.3"/41.2"
Hip room (front/rear) 53.7"/53.6"

CAPACITIES

Fuel capacity 20 gal.
Seating capacity 5
Passenger volume 108.0 cu. ft.
Cargo volume 21.2 cu. ft.

EXTERIOR PAINT COLORS



LIGHT ICE BLUE\*



DARK INK BLUE\*



MERLOT



BLACK



OXFORD WHITE

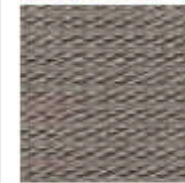


SILVER BIRCH

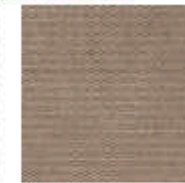
Mercury uses clearcoat paint for beauty and protection. All exterior paints are Metallic except for Oxford White and Black. Colors are representative only.

\*New for 2008.

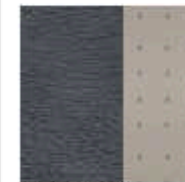
INTERIOR CLOTH/LEATHER COLORS



MEDIUM LIGHT STONE CLOTH ■



CAMEL CLOTH ■



MEDIUM DARK FLINT LEATHER WITH LIGHT STONE LEATHER INSERTS ■



CHARCOAL BLACK LEATHER □



LIGHT CAMEL LEATHER □ □

■ SABLE ■ PREMIER □ AVAILABLE



Get the ride you want. Whether you plan to lease or finance, you'll find the choices that are right for you at Ford Credit. Ask your Lincoln Mercury Dealer for details or check us out at www.fordcredit.com.

Ford Motor Company Insurance Services Get Ford Motor Company quality in your auto insurance. Our program offers industry-leading benefits and competitive rates. Call 1.877.367.3847, or visit us at www.fordvip.com for a no-obligation quote. Insurance offered by American Road Services Company (in CA, American Road Insurance Agency), a licensed agency and subsidiary of Ford Motor Company.

Ford Extended Service Plan For a purchase or lease, the Ford Extended Service Plan (ESP) gives you "Peace-of-Mind" protection designed to cover key vehicle components and protect you from the cost of unexpected repairs. Ask your dealer for an ESP, the only service contract backed exclusively by Ford and honored at all Ford Lincoln Mercury dealerships.

Peace of mind comes from a 3-year/36,000-mile bumper-to-bumper New Vehicle Limited Warranty that covers repair, replacement or adjustment of parts at no additional cost, as well as a 5-year/60,000-mile powertrain limited warranty which features no deductible and is fully transferable. Roadside Assistance for 5 years or 60,000 miles provides the security of knowing that help may be only a phone call away should you run out of fuel, lock yourself out of the vehicle or need towing. Your Lincoln Mercury Dealer will provide complete details.

Comparisons based on 2008 competitive models (Standard 5-passenger Large Car class), publicly available information and Ford certification data at time of release. Some features discussed may be optional. Vehicles shown may contain optional equipment. Features shown may be offered only in combination with other options or subject to additional ordering requirements or limitations. Dimensions shown may vary due to optional features and/or production variability. Following publication of the catalog, certain changes in standard equipment, options and the like, or product delays may have occurred which would not be included in these pages. Your Lincoln Mercury Dealer is the best source for up-to-date information. Lincoln Mercury reserves the right to change product specifications at any time without incurring obligations.