

OUTLANDER PHEV



2019


2019
**GREEN SUV
OF THE YEAR**
GREEN CAR JOURNAL

EUROPEAN MODEL SHOWN.



EUROPEAN MODEL SHOWN.

The world's best selling plug-in hybrid SUV* drives like no other car on the planet.

Bringing together the superior efficiency and quietness of an electric vehicle, with the performance, stability and handling of Super All-Wheel Control, and the versatility, safety and size of an SUV to fit all of life's important things, the 2019 Outlander PHEV is anything but ordinary. Powered by twin 60kW electric motors that generate energy developed by a 12kWh lithium-ion main drive battery, and a highly efficient 2.0L MIVEC gasoline engine, performance and efficiency are optimized based on your driving needs. The Outlander PHEV combines advanced plug-in hybrid electric drivetrain technology with an uncompromising commitment to safety, comfort, performance, efficiency and utility.

Depending on driving needs, this advanced hybrid technology automatically chooses from three drive modes (EV [100% Electric], Series Hybrid and Parallel Hybrid) and is equipped with two driver-selectable battery modes (Battery SAVE and Battery CHARGE) either one of which will charge the battery via the engine, or use the engine to maintain the remaining battery state of charge. Switch to EV Priority mode and the system prioritizes 100% electric driving as you silently glide through town.

With so many driving mode options to suit your needs, the Outlander PHEV always delivers a quiet, comfortable ride with more than enough power to tackle any road conditions while remaining extremely efficient.

A whole new world of driving awaits with the 2019 Outlander PHEV.



OUTLANDER PHEV QUALIFIES FOR HOV LANE ACCESS.

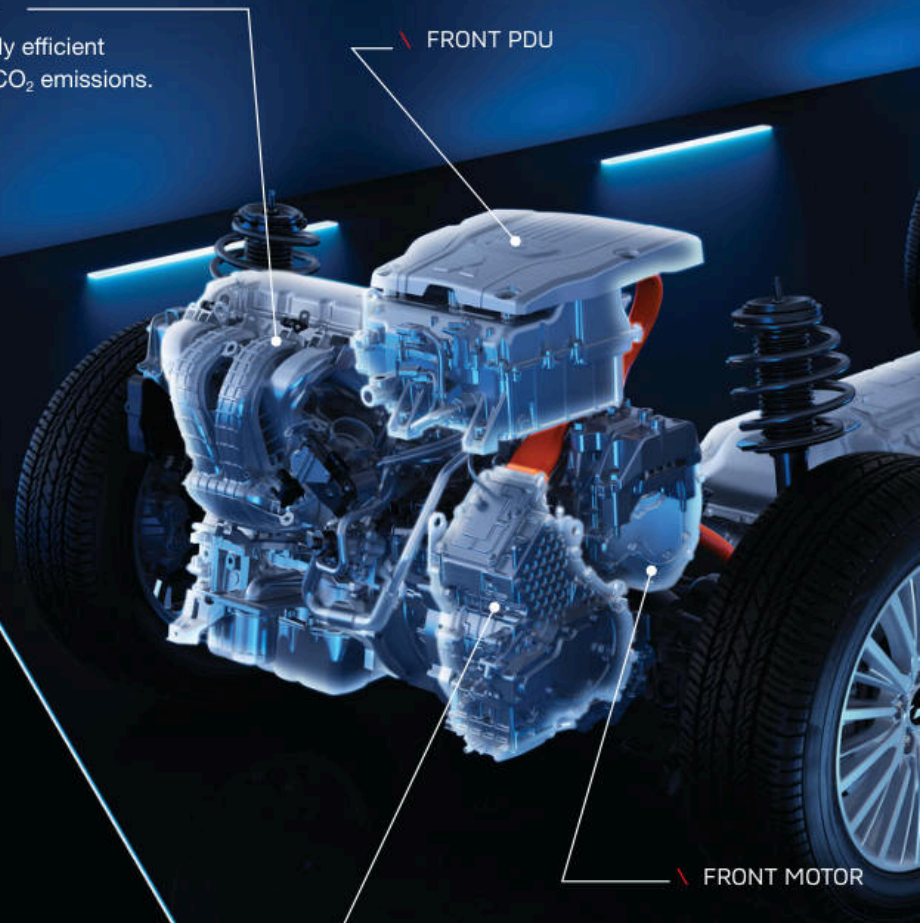
2.0-LITER ENGINE

The powerful, highly efficient engine minimizes CO₂ emissions.

FRONT MOTOR PDU & REAR EMCU

These intelligent control units contribute to heightened energy efficiency and optimal motor control with instant maximum torque that outperforms a 3.0-liter gasoline engine.

FRONT PDU



FRONT MOTOR

GENERATOR

The high-performance generator transforms engine power into electricity to recharge the drive battery and assist the motors when needed.

*Based on IHS Markit New Registrations of plug in hybrid and all SUV body styles for January 2013 - September 2018 compiled from governments and other sources (where available). Captures 95% of global new vehicle volumes in more than 80 countries.

SUPERIOR CONTROL IN ALL CONDITIONS

Get ready for exceptional handling, superior control and driving excitement. The Super All-Wheel Control (S-AWC) system, built on the strength of our long history of competing on the world rally stage, maximizes the full potential of Twin Motor 4WD without compromising safety, comfort or efficiency. By optimally managing AYC (Active Yaw Control), ABS (Anti-lock Braking System) and Active Stability Control (ASC) with Traction Control Logic (TCL), for enhanced traction, the Outlander PHEV confidently conquers all road conditions. When desired, press the 4WD LOCK button to simulate locking of a centre differential and optimally distribute torque to all four wheels for enhanced traction and stability.

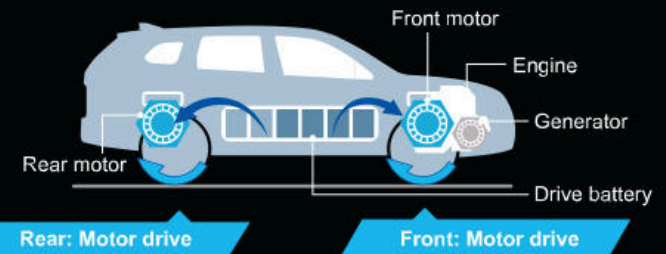
REAR EMCU

REAR MOTOR

EUROPEAN MODEL SHOWN.

MAIN DRIVE BATTERY

The battery is stored under the floor to maximize interior space and lower the center of gravity for enhanced safety and handling.



TWIN MOTOR 4WD FEATURING S-AWC

Separately mounted high-output electric motors at the front and rear axles instantly supply torque for incredibly responsive 4WD performance with Super All-Wheel Control (S-AWC) ensuring excellent driving stability and intuitive, linear handling.

AUTOMATICALLY SELECTED DRIVE MODES

Whether you choose to use the gas, electric or both, the Outlander PHEV is as flexible as your driving demands require. The Outlander PHEV switches seamlessly between twin electric motors or a highly efficient gas engine for an incredibly smooth, quiet ride – all without compromising comfort, efficiency or performance. And it automatically switches between the three drive modes (EV, Series Hybrid and Parallel Hybrid) as conditions and your driving style change.

ELECTRIC DRIVING

EV DRIVE MODE: Electric power only

The electric motors power the vehicle using electricity from the battery, resulting in zero fuel consumption and zero CO₂ tailpipe emissions. This drive mode is quiet, clean and powerful.



HYBRID DRIVING

SERIES HYBRID MODE: Electric power & engine assistance

The electric motors power the vehicle using engine-generated electricity. The engine generates electricity when the battery level is low or when additional power is required for overtaking or climbing hills, for example.



PARALLEL HYBRID MODE: Engine power & electric assistance

When further power requirements are needed, Parallel Hybrid Mode is automatically selected. The engine powers the vehicle with assistance from the electric motors.



EUROPEAN MODEL SHOWN.



CHARGING CABLE STORAGE

A storage space beneath the rear luggage area floor is ideal for conveniently storing the charging cable.

EUROPEAN MODEL SHOWN.





EUROPEAN MODEL SHOWN.

POWER UP AT HOME OR ON THE GO

Utilizing a standard 120V household outlet, the Outlander PHEV can be recharged in approximately 8 hours. If an external Level 2 EVSE (Electric Vehicle Supply Equipment) charger utilizing 240V is installed, that charging time can be cut down to approximately 3.5 hours. Outlander PHEV is currently the only Plug-in Hybrid Electric SUV that provides you with the capability of DC quick charging, utilizing a CHAdeMO protocol public charger. An 80% charge can be achieved in as little as 25 minutes. With so much flexibility in charging options, Outlander PHEV ensures the ultimate in efficiency. Charging status is conveniently displayed on the instrument panel and on your smartphone using the Mitsubishi Remote Control App, which not only remotely controls the charging timer, allowing you to reschedule charging during off-peak hours for example, it also allows you to pre-heat or pre-cool the interior of the vehicle, for a comfortable start to your drive.



LEVEL 1:
AC 120V/12A
FULL CHARGE

8 Hours[†]
using supplied cordset

LEVEL 2:
AC 240V
FULL CHARGE

3.5 Hours[†]
using an EVSE
(not supplied with vehicle)

DC QUICK CHARGING
80% CHARGE

25 Mins[†]

[†] All charge times are approximate.



ENERGY USAGE INDICATOR

How efficiently are you driving?
The energy usage indicator informs you by pointing the needle toward the Power, Eco or Charge zone.

ECO SCORE

Indicates the eco-friendliness of your driving. The more green leaves, the more efficient your drive is.



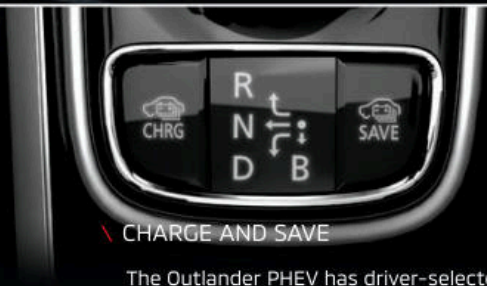
DRIVING INTELLIGENCE

Drive as efficiently as you want with an abundance of intelligent controls at your fingertips. Control battery usage with the Charge or Save modes, and monitor your energy usage with the Energy Usage Indicator in the instrument cluster or in the audio system display. Best of all, use the ECO SCORE feature to measure just how eco-friendly your driving is. Sophisticated and stylish, the contemporary interior design complements its smart technology to keep you connected.

CHARGE AND SAVE

The Outlander PHEV has driver-selected modes to give you hands-on control of how much you use your battery. Engage the Charge mode, and the engine will generate electricity to charge the lithium-ion drive battery.

With the Save Mode, the gasoline engine will maintain the current state of charge in the drive battery, allowing you to save it for the portion of your drive where electric motors are more efficient, like around-town driving.





REGENERATIVE BRAKING LEVEL SELECTOR (PADDLE TYPE)

As soon as the accelerator pedal is released, the Outlander's electric motors function like power generators. Kinetic energy generated during deceleration is captured to recharge the drive battery. The sensation is similar to engine braking in a gasoline-powered vehicle. Select one of six regenerative braking settings³⁶ with the regenerative braking level selectors mounted to the steering column, behind the steering wheel.

³⁶ Except when Adaptive Cruise Control (ACC) is active.

EUROPEAN MODEL SHOWN.



EV PRIORITY MODE

Pressing the EV button enters the EV Priority Mode and increases the threshold to where the gasoline engine will engage⁴. This allows you to manually select all-electric driving via Twin Motor 4WD for zero fuel consumption and a quiet ride without engine noise.

⁴ Please see the owner's manual for details and limitations.

TOMORROW'S EFFICIENCY TODAY

Outlander PHEV boasts an exceptional 74MPGe combined range. The innovative Plug-in Hybrid EV system is remarkably eco-efficient. Enjoy the possibility of zero fuel consumption, zero CO₂ tailpipe emissions and an incredibly quiet ride during all-electric driving. Twin electric motors and an efficient gas engine optimize performance according to your driving.

ENERGY CONSUMPTION

74 MPGe

25 MPG

Combined city/highway Electric + Gas
.0 gal/100mi of gas + 45 kWh/100mi

Combined city/highway Gas only
4.0 gal/100mi

COMBINED ECONOMY

74MPGe

City/Highway
Combined fuel economy- electric + gasoline
.0 gal/100mi of gas + 45 kWh/100mi²

² EPA estimated 74 MPGe (Miles Per Gallon equivalent) combined. Actual mileage may vary.

SMARTPHONE LINK DISPLAY AUDIO

The 7" Smartphone Link Display Audio system supports Apple CarPlay and lets you access Apple Music, Maps, make phone calls and send text messages through the large display screen or with your voice using Siri¹. It's a smarter and safer way to use your iPhone inside the vehicle. The system also supports Android Auto². Simply activate the voice control of the vehicle, and you can talk to Google[™] and access all the most commonly used features on the Android platform, such as Google Maps and Google Play Music.



MODERN REFINEMENTS

Mitsubishi Outlander PHEV's refined lines and bold presence make a true statement on the road. But it's the remarkably silent, luxurious interior that sets it apart. Whether running errands or taking a road trip, you'll feel the luxury with available leather seating surfaces and leather-wrapped accents, complemented with chrome-plated interior door handles, and contrasting stitching on the black or gray leather options. Take control of your ride with a premium leather-wrapped, four-spoke steering wheel with wheel-mounted Bluetooth[®], audio and cruise control buttons and available heated feature. Topped off by automatic dual zone climate control and an available power sunroof, you and your passengers will enjoy the modern, refined comfort of the 2019 Outlander PHEV.

Bluetooth USB Apple CarPlay android auto

¹ Apple CarPlay and Siri are trademarks of Apple Inc., registered in the U.S. and other countries. ² To use Android Auto on your phone screen, you'll need an Android[™] phone running 5.0 (Lollipop) or higher and the Android Auto app. Google, Google Play, Android, Android Auto, and other marks are trademarks of Google LLC.

7" SMARTPHONE LINK DISPLAY AUDIO SYSTEM

EUROPEAN MODEL SHOWN.

DUAL-ZONE AUTOMATIC CLIMATE CONTROL



\ HEATED STEERING WHEEL

\ PUSH BUTTON START

\ ELECTRIC PARKING BRAKE

\ STEERING WHEEL-MOUNTED AUDIO, CRUISE AND BLUETOOTH® CONTROLS

\ HEATED FRONT SEATS

A NEW ERA OF COMFORT

Designed for family versatility and flexibility, the Outlander PHEV's 5-seat roomy interior gives you plenty of space where you need it. The battery is stored under the floor to maximize interior space, lowering the centre of gravity for enhanced safety and handling. The rear seats can be folded down to make extra room for whatever you need to carry, with additional storage space beneath the generous cargo area for storing the charging cable. When equipped with the power tailgate, a simple touch of the Outlander PHEV's tailgate release button or FAST-Key remote automatically opens and closes the tailgate, making loading and unloading even easier. Towing is made simple if you want to bring along your favorite outdoor recreational equipment as the Outlander PHEV packs plenty of power and a towing capacity of up to 1,500 lbs.

TOWING CAPACITY | 1,500 Lbs

TOTAL CARGO ROOM | 66.6 cu.Ft without sunroof
62.8 cu.Ft with sunroof

AVAILABLE 1500-WATT AC POWER SUPPLY W/ 2 OUTLETS



EUROPEAN MODEL SHOWN.



EUROPEAN MODEL SHOWN.





\ MULTI VIEW CAMERA SYSTEM

The available Multi View Camera System with a virtual 360° bird's-eye view provides a panoramic view of the area surrounding the vehicle. You can now master tight driveways, reveal blind spots, and park with confidence and safety.



\ AUTO-DIMMING REARVIEW MIRROR

The auto-dimming rearview mirror automatically reduces glare from the headlights of cars behind you to maintain a clear rearview and support safer driving.



ALL-AROUND SAFETY

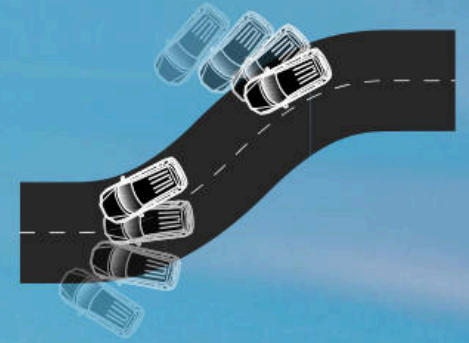
There's nothing more important than the safety of individuals inside and outside your vehicle. Advanced safety features coupled with Mitsubishi Motors' Reinforced Impact Safety Evolution (RISE) body have made the Outlander PHEV a confident vehicle to be in. All Outlander PHEV models feature a standard rearview camera, Blind Spot Warning (BSW) with Lane Change Assist (LCA)¹ and Rear Cross Traffic Alert (RCTA)¹. Additional active safety available to the Outlander PHEV include Lane Departure Warning (LDW)¹, Forward Collision Mitigation (FCM)¹ with pedestrian detection and Adaptive Cruise Control (ACC)¹. No matter where your travels take you, drive with confidence knowing you have all-around protection.



EUROPEAN MODEL SHOWN.

ACTIVE STABILITY CONTROL (ASC)

If wheels lose their grip on slippery surfaces or while turning, ASC automatically adjusts engine output and applies the braking force at the appropriate wheels to help maintain control and prevent skidding.

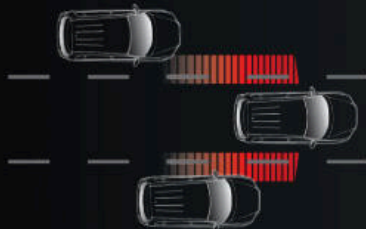


PEACE OF MIND WITH INTUITIVE TECHNOLOGIES

Embedded with the advanced engineering of the Outlander PHEV lies an integrated system of intuitive automotive technologies designed to deliver a level of sophisticated confidence, every time you push the start button. Featuring a suite of available safety systems like Automatic High Beam (AHB)¹ that regulate brightness, to Lane Departure Warning (LDW)¹, Forward Collision Mitigation (FCM)¹ with pedestrian detection, Rear Cross Traffic Alert (RCTA) and Adaptive Cruise Control (ACC)¹, the Outlander uses the latest in safety technology to keep you, and those around you, as safe and secure as possible.

BLIND SPOT WARNING (BSW)¹ WITH LANE CHANGE ASSIST (LCA)¹

Together Blind Spot Warning (BSW) and Lane Change Assist (LCA) alert you when a vehicle is in or approaching your blind spot. When a vehicle in the next lane is travelling at same speed or faster in the detection areas, a warning light will illuminate in the corresponding side mirror. If your turn signal is on, the warning light on the corresponding mirror will blink and the system will beep to alert you that it is unsafe to change lanes.



AUTOMATIC HIGH BEAM (AHB)¹

To increase safety, comfort and driving ease at night, high beams automatically switch to low beams when oncoming vehicles are detected and automatically switch back to high beams so you don't have to remove your hand from the steering wheel to switch the beams manually.

LANE DEPARTURE WARNING (LDW)¹

Lane Departure Warning warns you when you've left your lane without signalling.



REAR CROSS TRAFFIC ALERT (RCTA)¹

Rear Cross Traffic Alert (RCTA) is an active safety system that detects a vehicle approaching from the side while you're backing up. With so much advanced safety on board, the Mitsubishi Outlander PHEV is constantly monitoring your well-being.

FORWARD COLLISION MITIGATION (FCM)¹ WITH PEDESTRIAN DETECTION SYSTEM

Forward Collision Mitigation (FCM)¹ with pedestrian detection uses laser radar and camera technology to determine if a frontal collision with a vehicle or pedestrian is imminent.





EUROPEAN MODEL SHOWN.

ADAPTIVE CRUISE CONTROL (ACC)[†] SYSTEM

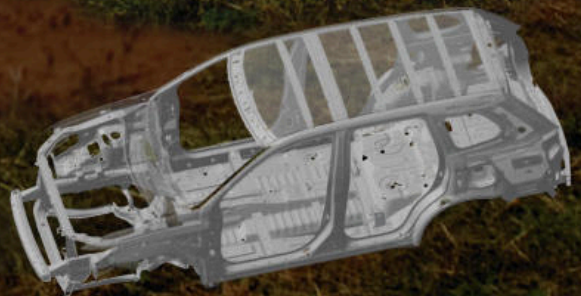
Adaptive Cruise Control (ACC) uses radar technology to judge and maintain distances between you and the vehicle ahead.



ACC Indication on multi-information display

RISE BODY CONSTRUCTION

RISE takes innovative engineering technology to the next level. Straight frame structure, high tensile-strength steel and highly efficient energy absorption are integral to RISE safety. Your utmost safety is enhanced by many available, technologically advanced systems.



TRIM KEY FEATURES

OUTLANDER PHEV SEL S-AWC

Standard specifications:

- 2.0L DOHC MIVEC RANGE EXTENDER ENGINE
- SINGLE SPEED, FIXED REDUCTION GEAR TRANSMISSION
- TWIN MOTORS SUPER ALL WHEEL CONTROL (S-AWC)
- 60KW TWIN-ELECTRIC AC SYNCHRONOUS ELECTRIC MOTORS
- 12KW LITHIUM-ION MAIN DRIVE BATTERY
- REGENERATIVE BRAKE SYSTEM (RBS) WITH STEERING MOUNTED PADDLE SHIFTERS
- 120V/240V CHARGING SYSTEM
- DC FAST CHARGE CAPABILITY
- MAIN BATTERY WARMING SYSTEM
- ELECTRIC HEATER
- 120-VOLT, 8A/12A SWITCHABLE CHARGE CABLE
- CHARGE DOOR LIGHT AND LID LOCKING SYSTEM
- ELECTRIC POWER STEERING
- HALOGEN HEADLIGHTS
- LED DAYTIME RUNNING LIGHTS
- AUTO ON/OFF HEADLIGHTS
- FOG LIGHTS
- COLOR-KEYED, HEATED, POWER FOLDING SIDE-VIEW MIRRORS WITH TURN INDICATORS
- REAR PRIVACY GLASS
- FRONT WINDSHIELD RAIN-SENSING WIPERS
- WINDSHIELD WIPER DE-ICER
- ROOF SPOILER
- SILVER ROOF RAILS
- SHARK-FIN ANTENNA
- 18-INCH MULTI-SPOKE ALLOY WHEELS
- TIRE PRESSURE MONITORING SYSTEM
- TIRE REPAIR KIT
- PHEV BADGING
- LCD COLOR MULTI-INFORMATION DISPLAY WITH S-AWC DISTRIBUTION ARRAY
- HIGH-CONTRAST METERS
- ENERGY METER (CHARGE, ECO, POWER)
- 8-WAY POWER ADJUSTABLE DRIVER'S SEAT
- 8-WAY POWER ADJUSTABLE PASSENGER SEAT
- HEATED FRONT SEATS
- 60/40 SPLIT FOLD-DOWN REAR SEATS WITH RECLINING ADJUSTMENTS
- FRONT SEAT BACK POCKETS
- LEATHER APPOINTED SEATS
- LEATHER-WRAPPED STEERING WHEEL
- TILT/TELESCOPIC STEERING WHEEL
- ELECTRIC SHIFT LEVER
- BLACK HEADLINER AND PILLARS
- SILVER PAINTED INSTRUMENT PANEL ACCENTS
- SILVER PAINTED FLOOR CONSOLE
- GLOSS BLACK AUDIO PANEL
- 7.0" SMARTPHONE LINK DISPLAY AUDIO (SDA) SYSTEM
- APPLE CARPLAY™ AND ANDROID AUTO™ COMPATIBILITY
- SIRIUSXM® SATELLITE RADIO W/ 3-MONTH SUBSCRIPTION
- SIX SPEAKERS
- BLUETOOTH® WIRELESS TECHNOLOGY
- STEERING WHEEL AUDIO CONTROLS
- STEERING WHEEL PHONE CONTROLS
- STEERING WHEEL VOICE CONTROLS
- FRONT USB PORT
- REAR USB PORT
- REARVIEW CAMERA SYSTEM
- EV DRIVE MODE SWITCHES (EV PRIORITY, CHARGE, SAVE)
- TWIN MOTOR S-AWC DRIVE MODE SELECTOR
- DUAL-ZONE AUTOMATIC CLIMATE CONTROL
- REAR SEAT AIR VENTS
- FAST-KEY PASSIVE ENTRY SYSTEM WITH PUSH BUTTON START AND PANIC FEATURE
- MITSUBISHI REMOTE CONTROL
- POWER DOOR LOCKS
- POWER WINDOWS WITH DRIVER CONTROLLED AUTO UP/DOWN FOR ALL WINDOWS
- ILLUMINATED POWER WINDOW SWITCHES
- POWER REMOTE LIFTGATE
- 12-VOLT POWER OUTLET
- AUTO-DIMMING REARVIEW MIRROR WITH HOMELINK®
- REAR SEAT CENTER ARMREST WITH CUPHOLDERS
- BLIND SPOT WARNING (BSW) WITH LANE CHANGE ASSIST (LCA) AND REAR CROSS TRAFFIC ALERT (RCTA)
- ACTIVE STABILITY CONTROL (ASC)
- HILL START ASSIST (HSA)
- ACOUSTIC VEHICLE ALERT SYSTEM
- ADVANCED DUAL FRONT AIRBAGS
- FRONT SEAT MOUNTED SIDE AIRBAGS
- SIDE CURTAIN AIRBAGS
- DRIVER'S KNEE AIRBAG
- ANTI-THEFT ENGINE IMMOBILIZER
- ANTI-THEFT ALARM SYSTEM
- ELECTRIC PARKING BRAKE W/ AUTO HOLD
- SEL BADGE

OUTLANDER PHEV GT S-AWC

All SEL S-AWC key features plus the following:

- LED HIGH AND LOW BEAM HEADLIGHTS
- LED FOG LIGHTS
- POWER GLASS SUNROOF W/SUNSHADE AND TILT FEATURE
- 710W ROCKFORD FOSGATE® PREMIUM AUDIO SYSTEM WITH 9 SPEAKERS
- HEATED STEERING WHEEL
- MULTI-VIEW CAMERA SYSTEM
- 1500-WATT AC POWER SUPPLY W/ 2 OUTLETS
- ADAPTIVE CRUISE CONTROL (ACC)
- FORWARD COLLISION MITIGATION (FCM)
- LANE DEPARTURE WARNING (LDW)
- AUTOMATIC HIGH BEAM (AHB)
- AUTO-DIMMING REARVIEW MIRROR WITH COMPASS AND HOMELINK®
- GT BADGE



FOR A COMPLETE LIST OF FEATURES, TECHNICAL SPECIFICATIONS AND OPTIONS, VISIT WWW.MITSUBISHICARS.COM

ONE OF THE BEST WARRANTIES IN ITS CLASS

PHEV COMPONENTS
LIMITED WARRANTY
10 YEAR | **100,000** MILES

MAIN DRIVE LITHIUM-ION BATTERY
LIMITED WARRANTY
10 YEAR | **100,000** MILES

POWERTRAIN
LIMITED WARRANTY
10 YEAR | **100,000** MILES

Plus, the Outlander PHEV is backed by these comprehensive warranties:

BASIC NEW VEHICLE LIMITED WARRANTY	5YR 60,000 MILES
ANTI-CORROSION/PERFORATION LIMITED WARRANTY	7YR 100,000 MILES
ROADSIDE ASSISTANCE	5YR UNLIMITED MILES

Technical data, equipment and options shown are based on the latest information available at the time of printing and are subject to change without notice. Colors may vary due to the printing process. Exterior and interior lights on vehicles shown may be illuminated for illustration purposes only. Vehicles are shown with optional equipment or images may be international models shown. Not all equipment is available on every model. For complete details about equipment configuration and Mitsubishi Genuine Accessories, please contact your Mitsubishi Motors Retailer. © 2019 Mitsubishi Motors North America. † The Forward Collision Mitigation with Pedestrian Detection system is a driver aid only and is not a substitute for safe and careful driving. Under certain circumstances, the system may not detect other vehicles and/or pedestrians correctly. The Adaptive Cruise Control system is not a collision avoidance system or an automatic driving system. It is designed to use only limited braking and is never a substitute for safe and careful driving. Never rely solely on the Adaptive Cruise Control system. Under certain circumstances, the system may not detect other vehicles correctly. The Lane Departure Warning (LDW) system is a driver aid only and is not a substitute for safe and careful driving. Under certain circumstances, this system may not detect correctly. The Blind Spot Warning (BSW) and Lane Change Assist (LCA) system is a driver aid only and is not a substitute for safe and careful driving. Under certain circumstances, this system may not detect other vehicles correctly. Automatic High Beam (AHB) system is a driver aid only and factors such as dirty windshield, weather, lighting and terrain limit effectiveness, requiring the driver to manually operate the high beams. See Owner's Manual for additional details and limitations. 1 Apple CarPlay and Siri are trademarks of Apple Inc., registered in the U.S. and other countries. 2 To use Android Auto on your phone screen, you'll need an Android™ phone running 5.0 (Lollipop) or higher and the Android Auto app. Google, Google Play, Android, Android Auto, and other marks are trademarks of Google LLC. The Bluetooth® word mark and logos are owned by Bluetooth SIG, Inc., and any use of such marks by Mitsubishi Motors is under license. © 2017 SiriusXM Inc. "SiriusXM", SiriusXM Satellite Radio subscriptions sold after 3-month prepaid period expires. Subscriptions are governed by SiriusXM Customer Agreement; see siriusxm.ca. "SiriusXM," the SiriusXM logo, channel names and logos are trademarks of SiriusXM Radio Inc. and are used under license. **Whichever comes first. Regular maintenance not included. See dealer or mitsubishicars.com for warranty terms, restrictions and details. Not all customers will qualify.