



**MITSUBISHI  
MOTORS**

Drive your Ambition



**2018 OUTLANDER SPORT**



# INSPIRING OUR DRIVERS SINCE DAY ONE

At Mitsubishi Motors, we believe that our vehicles are far more than a means of transportation. They are a moving expression of our storied past. For 100 years, we've been committed to building vehicles that offer a unique blend of style, durability, and performance. With its dynamic exterior and leading-edge features, the 2018 Outlander Sport honors this tradition by continuing our crossover lineage. It is agile, adventurous, and versatile. While we are proud of our legacy of inspired technology, aesthetic design principles, and enduring commitment to safety, we believe that our best days are yet to come.



## SUPERLATIVE STYLE

Outside, it's sleek and aggressive. We've restyled our front grille and enhanced the rear fascia design with a carbon-type pattern. High-contrast meter gauges are sharp and clear. And new LED Running Lights — standard on SE and SEL trims — not only look impressive, but they also increase your Outlander Sport's visibility to oncoming drivers, making them eye-catching for all the right reasons. Sophisticated style doesn't end with the exterior. Soft-touch material enhances the upper door trim and dash panel, while subtle silver accents add a touch of class. 2018 brings with it a new center-console design, shift lever, and grain-pattern texture. New combination seat fabric with red stitching is available on the SE trim, while a host of comfortable amenities is provided in upscale fashion.



### HID HEADLIGHTS

Outlander Sport is full of bright ideas, like its available High Intensity Discharge headlights (HID). Using xenon gas, they project a beam that's 35% brighter than normal lights. What's more, the light they emit more closely mimics that of the sun, making for better definition and less eye fatigue.

### LED RUNNING LIGHTS

New LED running lights on SE and SEL trims boost your style quotient and help make your Outlander Sport more conspicuous to oncoming vehicles.

### LED COMBINATION TAIL LIGHTS

Outlander Sport has got your back with LED combination tail lights. These high-quality units not only look sharp, they also light up faster, are more visible, and last longer than traditional tail lights.

### SOUND ISOLATION / QUIETNESS

To help reduce engine and road noise, along with unwanted vibration, we maximized sound-insulation thickness in key areas and engineered a special vibration-absorbing damper for the engine compartment. This year, we've made additional noise, vibration, and harshness (NVH) improvements by strategically placing optimized insulators around the vehicle to decrease noise levels inside the cabin.



### PANORAMIC GLASS ROOF

By day, the available panoramic glass roof creates a fresh, open-air feeling throughout the interior. By night, the roof's LED lighting sets the mood for endless evening-drive possibilities.

### DESIGNER CABIN

The Outlander Sport's spacious interior is an agreeable environment, indeed. The wide, supportive seats have been tailored with premium upholstery. The upper door trim and dash panel feature soft-touch material with a sumptuous texture. At key points around the cabin, subtle silver accents add that certain touch of class.

### 18 IN. ALLOY WHEELS

Sure, these 18 in. alloy wheels look great, but what many don't realize is that they also augment performance. Their tall profile allows for a shorter tire sidewall, which helps minimize side-to-side flex when cornering.

### COLOR LCD MULTI-INFORMATION DISPLAY

An easy-to-read trip computer provides you with helpful information like average speed and gas mileage, instant fuel economy, cruising range to empty, outside temperature, and even maintenance-reminder information.

### ENJOY BEING IN CONTROL

Outlander Sport has your comfort covered with amenities such as standard heated side mirrors and available heated front seats. Inside its spacious interior you'll feel not only completely relaxed, but also in complete command, with its full range of features right at your fingertips.



#### TILT AND TELESCOPING STEERING WHEEL

Those who share their Outlander Sport with other drivers will appreciate the tilt and telescoping steering wheel. It makes finding that perfect driving position a quick and easy operation.

#### FAST-KEY PASSIVE ENTRY SYSTEM WITH PUSH BUTTON START

Outlander Sport's FAST-Key (Free-hand Advanced Security Transmitter) makes vehicle entry easy. Unlock the doors by simply pressing the button on either front door or the trunk lever. You can even start or stop the engine with the keys tucked away in a pocket or purse.

#### BLUETOOTH® WIRELESS TECHNOLOGY

To help you concentrate on the road ahead, standard Bluetooth® wireless technology connects your Outlander Sport with your smartphone, iPod® or other MP3 player, and most Bluetooth® audio-streaming devices, enabling you to take your playlists on the road.<sup>1,2</sup>

#### SIRIUSXM® SATELLITE RADIO

Enjoy over 150 channels of the best commercial-free music, plus every major sport and the biggest names in entertainment, news, and comedy. Listen in your car, on the



#### 60/40 SPLIT REAR SEATS

Outlander Sport gives you versatility your way. Its 60/40 split folding rear seat not only accommodates cargo and passengers alike, it also features a handy lever that drops the seatbacks quickly and easily.

#### AUTOMATIC CLIMATE CONTROL

This standard comfort feature helps keep the cabin temperature, fan speed, and air source to your liking, so you can keep your hands on the wheel, and not on the AC controls.

#### HEATED FRONT SEATS AND SIDE MIRRORS

Nothing feels more luxurious than available heated front seats on a cold day. And while they may not enhance your physical comfort, the heated side mirrors can help provide peace of mind and clear visibility on frosty mornings.

### MORE THAN JUST GOOD-LOOKING

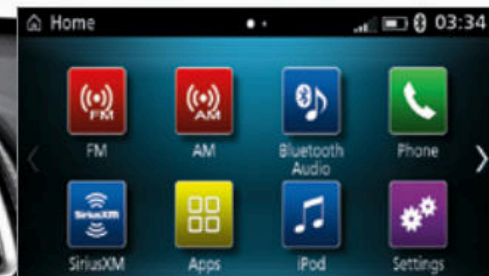
Outlander Sport is as smart as it is sleek. Efficiently engineered with energy-saving technologies, it achieves an estimated 30 mpg highway rating<sup>4</sup> when equipped with our 2.0-liter MIVEC engine, front-wheel drive, and Continuously Variable Transmission (CVT). It also offers features that entertain while keeping you safe, such as the Smartphone Link Display Audio system. In Outlander Sport, you'll soon be a master multitasker.

### SMARTPHONE LINK DISPLAY AUDIO

With all the communication and entertainment options offered by our smartphones these days, our available Smartphone Link Display Audio system helps you maintain caution behind the wheel while enjoying your smartphone's convenience features in your car. This advanced feature supports Apple CarPlay<sup>™</sup> and lets you access Apple Music<sup>®</sup> and Maps, make phone calls, and send messages all through the touch panel, or with your voice, using Siri<sup>®</sup>.<sup>5</sup> The system also supports Android Auto<sup>™</sup>.<sup>6</sup> Simply press the Push To Talk button to connect to Google and access all the most commonly used features on the Android<sup>™</sup> platform, such as Google Play Music, Google Maps, and Hangouts.<sup>6</sup>

### USB CONNECTIVITY

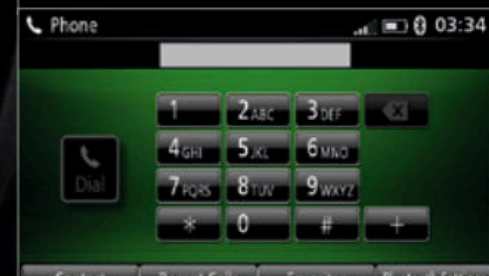
If you're like most, you appreciate the right driving soundtrack when you hit the highway. Standard dual USB ports — on SE and SEL trims — located in the center console let you plug in your smartphone, iPod<sup>®</sup>, or other compatible MP3 devices, and enjoy access to your library of road-trip tunes.<sup>2</sup>



From the home screen, you can tune in to all of your favorite music with plenty of access options.



View vital vehicle information like fuel economy.



Access your contacts and make or receive phone calls with touch panel or voice command options.



With SiriusXM<sup>®</sup> at your fingertips, you can receive alerts of your favorite sports teams, artists, or songs.

### ROCKFORD FOSGATE® PREMIUM AUDIO SYSTEM

Outlander Sport's available 710-watt Rockford Fosgate® premium audio system powers nine speakers, including a 10 in., dual-voice subwoofer. The system incorporates an advanced Digital Signal Processor (DSP) and offers the listener PUNCH® control over the subwoofer, sound field control over the image and staging of the system, and the latest Neural Surround Sound technology from DTS®. The system is loaded with state-of-the-art technologies, such as Dolby® volume, PremiDIA HD and PremiDIA Wide Surround for one of the best audio systems on the road.<sup>7</sup>



### EFFICIENT MIVEC ENGINES

Whether you go with the standard 148-hp 2.0-liter engine, or the available 168-hp 2.4-liter engine, you'll enjoy smooth performance and optimized fuel efficiency. Both are dual overhead cam, 16-valve powerplants that feature resin-coated pistons and smooth-surfaced camshafts for reduced friction. Further minimizing engine load is an electric power steering system. What's more, these engines offer an advanced technology called MIVEC (Mitsubishi Innovative Valve timing Electronic Control). MIVEC employs a mechanism to vary the valve timing for optimum engine "breathing." The result is more responsive acceleration, reduced emissions, and enhanced fuel economy.

### CONTINUOUSLY VARIABLE TRANSMISSION

One of the smoothest and most efficient transmissions available, Continuously Variable Transmission (CVT) operates on a pulley system, allowing infinite variability between the highest and lowest ratios. Instead of shifting gears, it adapts to changing vehicle speeds and helps keep the engine operating efficiently.

### ECO INDICATOR

This helpful feature illuminates at a given vehicle speed and engine RPM range to let you know that your Outlander Sport is operating at maximum fuel efficiency. The longer you drive with the ECO indicator activated, the better your fuel economy.



### QUIET CONFIDENCE

Often our most impressive pieces of engineering go, thankfully, unnoticed. These would be our advanced active and passive safety features.

### FORWARD COLLISION MITIGATION

The available Forward Collision Mitigation (FCM) system utilizes both laser radar and camera technology to determine if a frontal collision with a vehicle or pedestrian is imminent. If so, it warns the driver with audible and visual signals, and automatically applies moderate to emergency braking to reduce the severity of — or, if possible, avoid the collision.<sup>8</sup>

### LANE DEPARTURE WARNING

Most traffic accidents are due to driver error or simple inattention. Outlander Sport's available Lane Departure Warning (LDW) feature helps reduce the potential dangers associated with drifting out of your lane, warning you with both a display and an audible warning if the system senses your Outlander Sport departing from its established lane.<sup>9</sup>

### AUTOMATIC HIGH BEAM HEADLIGHTS

Automatic High Beam (AHB) headlights, available on the SEL trim, sense the intensity of proximate light sources and automatically adjust between low beam headlights and high beam headlights accordingly. If a vehicle is detected ahead of you, the headlights remain in low beams, and if the system does not detect any vehicles ahead of you, the headlights change to high beams.<sup>10</sup>



### SEVEN STANDARD AIRBAGS

A standard Supplemental Restraint System (SRS) features seven airbags: dual-stage front airbags with seat position sensors, front side airbags, side curtain airbags, and a driver's knee airbag.<sup>11</sup> Also standard is a Brake Pedal Recession Protection Structure to help reduce driver leg injury in the event of a frontal collision.

### REINFORCED IMPACT SAFETY EVOLUTION

Utilizing high-tensile steel, Reinforced Impact Safety Evolution (RISE) engineering provides a tremendous amount of occupant protection in the event of a collision. RISE combines energy-absorbing front and rear structures with a super-rigid occupant cell, along with reinforcing bars in the doors and energy-absorbing materials in the side pillars.

### ALL-WHEEL CONTROL

When it comes to all-wheel drive systems, we've elevated the science to an art form. Outlander Sport's available on-demand Electronically Controlled All-Wheel Control (AWC) is truly a marvel of engineering. Available on all trims, this advanced system continually monitors the road and intelligently transfers power to the wheels with the most traction. This improves handling and performance without compromising on efficiency. So whether you're driving on snow, in mud, or simply demand topline performance on tight corners, you can rely on AWC to help keep you on track.

**EXTERIOR COLORS**

Diamond White Pearl



1/2

3

4

Alloy Silver Metallic



1/2

3

4

Mercury Gray Metallic



1/2

3

4

Labrador Black Metallic



1/2

3

4

The numbers indicate interior colors / trims available with exterior vehicle color.

**EXTERIOR COLORS**

Rally Red Metallic



1/2

3

4

Octane Blue Metallic



1/2

3

4

Quartz Brown Metallic

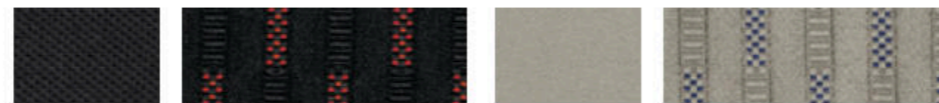


1/2

3

4

**INTERIOR COLORS**



1) Black Sport Fabric

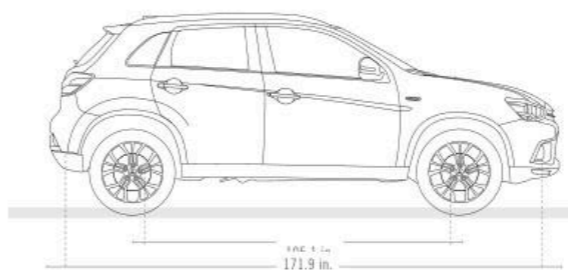
2) Gray Sport Fabric



3) Combination Soft-Touch Seating Surfaces

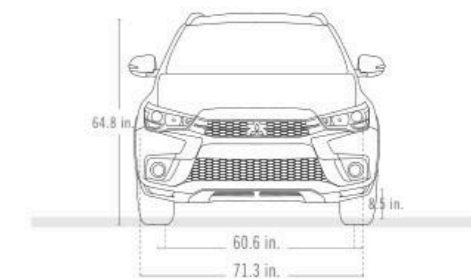


4) Black Leather



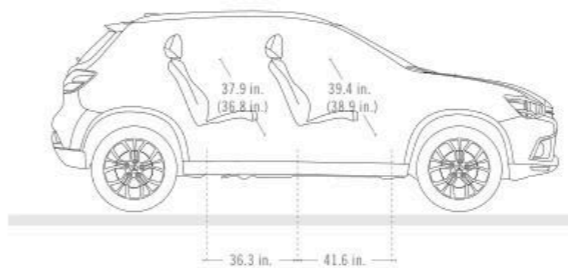
**EXTERIOR DIMENSIONS**

Overall length	171.9 in.
Wheelbase	105.1 in.

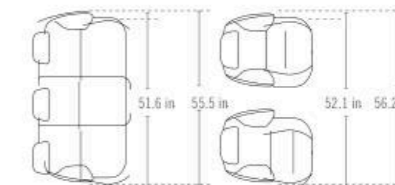


**EXTERIOR DIMENSIONS**

Overall height	64.8 in.
Overall width	71.3 in.
Ground clearance	8.5 in.
Track width, front	60.6 in.
Track width, rear	60.6 in.



INTERIOR DIMENSIONS (SAE)	Head Room (with panoramic roof)	Shoulder Room	Legroom	Hip Room
Front	39.4 in. (38.9 in.)	56.2 in.	41.6 in.	52.1 in.
Rear	37.9 in. (36.8 in.)	55.5 in.	36.3 in.	51.6 in.



**VOLUME (SAE)**

SAE passenger volume (with panoramic roof)	97.5 cu. ft. (95.6 cu. ft.)
SAE cargo volume – behind front seats (with panoramic roof)	49.5 cu. ft. (48.8 cu. ft.)
SAE cargo volume – behind 2nd-row seats (with subwoofer)	21.7 cu. ft. (20.1 cu. ft.)

ENGINE	ES 2.0 2WD / ES 2.0 AWC	SE 2.4 2WD / SE 2.4 AWC	SEL 2.4 2WD / SEL 2.4 AWC
Type	2.0L MIVEC DOHC, 16-valve Inline 4-cylinder	2.4L MIVEC DOHC 16-valve Inline 4-cylinder	2.4L MIVEC DOHC 16-valve Inline 4-cylinder
Materials	Aluminum block/aluminum cylinder heads	Aluminum block/aluminum cylinder heads	Aluminum block/aluminum cylinder heads
Bore x stroke	86.0 mm x 86.0 mm	88.0 mm x 97.0 mm	88.0 mm x 97.0 mm
Compression ratio	10.0:1	10.5:1	10.5:1
Displacement	2.0L/1,998 cc	2.4L/ 2,360 cc	2.4L/ 2,360 cc
Horsepower	148 @ 6,000 rpm	168 @ 6,000 rpm	168 @ 6,000 rpm
Torque	145 lb-ft @ 4,200 rpm	167 lb-ft @ 4,100 rpm	167 lb-ft @ 4,100 rpm
Redline RPM	6,500	6,500	6,500
Engine oil	0W-20	0W-20	0W-20
Recommended fuel	Regular unleaded	Regular unleaded	Regular unleaded
<b>TRANSMISSION</b>			
5-speed manual transmission	STD	—	—
Continuously Variable Transmission (CVT)	OPT / STD	STD	STD
Front-wheel drive (FWD)	STD / —	STD / —	STD / —
All-Wheel Control (AWC)	— / STD	— / STD	— / STD
<b>SUSPENSION</b>			
Front	MacPherson strut with stabilizer bar	MacPherson strut with stabilizer bar	MacPherson strut with stabilizer bar
Rear	Multi-link with stabilizer bar	Multi-link with stabilizer bar	Multi-link with stabilizer bar
<b>STEERING</b>			
Type	Electric Power Steering	Electric Power Steering	Electric Power Steering
Turns, lock to lock	3.3	3.3	3.3
Turning circle - curb to curb	34.8 ft.	34.8 ft.	34.8 ft.
<b>BRAKES / WHEELS / TIRES</b>			
Brakes - Front	Ventilated disc, 11.6 in.	Ventilated disc, 11.6 in.	Ventilated disc, 11.6 in.
Brakes - Rear	Solid disc, 11.9 in.	Solid disc, 11.9 in.	Solid disc, 11.9 in.
Brakes - ABS	4-wheel, 4-channel, 4-sensors with Electronic Brake-force Distribution (EBD) and Brake Assist	4-wheel, 4-channel, 4-sensors with Electronic Brake-force Distribution (EBD) and Brake Assist	4-wheel, 4-channel, 4-sensors with Electronic Brake-force Distribution (EBD) and Brake Assist
Wheels	18 x 7.0 J aluminum alloy	18 x 7.0 J aluminum alloy	18 x 7.0 J aluminum alloy
Tires	P225/55 R18	P225/55 R18	P225/55 R18
<b>CAPACITIES</b>			
Passenger Seating	5	5	5
Fuel	16.6 gallons / 15.8 gallons	16.6 gallons / 15.8 gallons	16.6 gallons / 15.8 gallons
Engine Oil (5MT)	4.5 quarts (4.2 quarts) / 4.5 quarts	4.5 quarts	4.5 quarts
<b>WEIGHTS</b>			
Curb weight (5MT)	3,109 lbs. (3,032 lbs.) / 3,252 lbs.	3,109 lbs. / 3,252 lbs.	3,142 lbs. / 3,285 lbs.
GVWR	4,343 lbs.	4,343 lbs.	4,343 lbs.
Weight distribution (% f/r) (5MT)	60/40 (59/41) / 59/41	60/40 / 59/41	60/40 / 59/41
<b>FUEL ECONOMY</b> <sup>12</sup>			
See <a href="http://www.fueleconomy.gov">www.fueleconomy.gov</a> for EPA estimates. Your mileage will vary. City (5MT) / Highway (5MT) / Combined (5MT)	24(23) / 30(29) / 27(25) mpg / 23 / 29 / 26 mpg	23 / 29 / 25 mpg / 23 / 28 / 25 mpg	23 / 29 / 25 mpg / 23 / 28 / 25 mpg

#### EXTERIOR FEATURES

High Intensity Discharge (HID) headlights	—	—	STD	Heated front seats	—	STD	STD
Halogen headlights	STD	STD	—	8-way power adjustable driver's seat	—	—	STD
Auto on/off headlights	—	—	STD	6-way adjustable driver's seat	STD	STD	—
Fog lights	—	STD	STD	4-way adjustable front passenger seat	STD	STD	STD
LED running lights	—	STD	STD	60/40 split fold-down rear seatback	STD	STD	STD
LED rear combination taillights	STD	STD	STD	Tilt/telescopic steering wheel	STD	STD	STD
Color-keyed front and rear bumpers	STD	STD	STD	Leather-wrapped steering wheel and shift knob	—	STD	STD
Color-keyed folding side-view mirrors with turn signal indicators	STD	STD	STD	Leather-wrapped parking brake handle	—	—	STD
Heated power side-view mirrors	STD	STD	STD	Aluminum pedals	—	—	STD
Power folding side-view mirrors	—	—	STD	Soft-touch upper instrument panel and door trim	STD	STD	STD
Color-keyed outside door handles	STD	STD	STD	Chrome-plated inner door handles	STD	STD	STD
Roof carrier plug-in accommodation	STD	STD	—	Carbon design audio panel	STD	STD	—
Black roof rails	—	—	STD	Gloss black with silver accent audio panel	—	—	STD
Chrome beltline molding	—	—	STD	Remote hood and fuel door release lever	STD	STD	STD
Shark fin antenna	STD	STD	STD				
4WD decal	— /STD	— /STD	— /STD				
Panoramic glass roof with adjustable LED lighting	—	—	PKG	<b>CONVENIENCE FEATURES</b>			
Front windshield variable intermittent wipers	STD	STD	STD	7.0 in. Smartphone Link Display Audio System with Apple CarPlay™, Android Auto™, and 6 speakers <sup>5,6</sup>	—	STD	STD
Rear window intermittent wiper/washer with defroster	STD	STD	STD				
Front windshield rain-sensing wipers	—	—	STD	710-watt Rockford Fosgate® premium audio system with 9 speakers including 10 in. dual-voice coil subwoofer with Punch Control®, DTS® Neural Surround, PremiDIA-WIDE® surround, and Dolby® Volume <sup>7</sup>	—	—	PKG
Rear privacy glass	STD	STD	STD				
Single exhaust outlet with chrome tip	—	—	STD				
18 in. two-tone alloy wheels	STD	STD	STD	7.0 in. touch panel display audio system with 4 speakers	STD	—	—
225/55R18 all-season tires	STD	STD	STD	USB port	STD	—	—
Temporary spare tire	STD	STD	STD	Dual USB ports	—	STD	STD
Silver front bumper under garnish	—	—	STD	SiriusXM® Satellite Radio with 3-mo. prepaid subscription <sup>3</sup>	—	STD	STD
Black front bumper under garnish	STD	STD	—	Digital HD Radio <sup>8</sup>	STD	STD	STD
Wheel arch moldings	STD	STD	STD	Bluetooth® wireless technology with steering wheel mounted controls <sup>1</sup>	STD	STD	STD

#### INTERIOR FEATURES

Color multi-information display	STD	STD	STD	Steering wheel audio controls	STD	STD	STD
High-contrast meters	STD	STD	STD	Steering wheel voice controls	—	STD	STD
Dual-visor vanity mirrors with illumination	—	STD	STD	Upshift indicator light (5MT only)	STD / —	—	—
Dual-visor vanity mirrors	STD	—	—	ECO indicator light (CVT only)	OPT / STD	STD	STD
Rear dome light (n/a with panoramic glass roof)	STD	STD	STD	Drive mode-selector (2WD/4WD AUTO/4WD LOCK)	— / STD	— / STD	— / STD
Cargo light	STD	STD	STD	Rearview camera	STD	STD	STD
5-passenger seating	STD	STD	STD	FAST-Key passive entry system with push button start and panic feature	—	STD	STD
Leather seating surfaces	—	—	STD	Remote keyless entry with panic feature	STD	—	—
Combination soft-touch seating surfaces	—	STD	—	Automatic climate control	STD	STD	STD
Fabric seating surfaces	STD	—	—	Micron air filtration	STD	STD	STD
				Rear heater floor ducts	STD	STD	STD

ES 2.0 2WD ES 2.0 AWC	SE 2.4 2WD SE 2.4 AWC	SEL 2.4 2WD SEL 2.4 AWC	INTERIOR FEATURES (CONT.)	ES 2.0 2WD ES 2.0 AWC	SE 2.4 2WD SE 2.4 AWC	SEL 2.4 2WD SEL 2.4 AWC
—	—	STD	Heated front seats	—	STD	STD
STD	STD	—	8-way power adjustable driver's seat	—	—	STD
—	—	STD	6-way adjustable driver's seat	STD	STD	—
—	STD	STD	4-way adjustable front passenger seat	STD	STD	STD
—	STD	STD	60/40 split fold-down rear seatback	STD	STD	STD
STD	STD	STD	Tilt/telescopic steering wheel	STD	STD	STD
STD	STD	STD	Leather-wrapped steering wheel and shift knob	—	STD	STD
STD	STD	STD	Leather-wrapped parking brake handle	—	—	STD
STD	STD	STD	Aluminum pedals	—	—	STD
—	—	STD	Soft-touch upper instrument panel and door trim	STD	STD	STD
STD	STD	STD	Chrome-plated inner door handles	STD	STD	STD
STD	STD	—	Carbon design audio panel	STD	STD	—
—	—	STD	Gloss black with silver accent audio panel	—	—	STD
—	—	STD	Remote hood and fuel door release lever	STD	STD	STD
— /STD	— /STD	— /STD				
—	—	PKG	<b>CONVENIENCE FEATURES</b>			
STD	STD	STD	7.0 in. Smartphone Link Display Audio System with Apple CarPlay™, Android Auto™, and 6 speakers <sup>5,6</sup>	—	STD	STD
STD	STD	STD	710-watt Rockford Fosgate® premium audio system with 9 speakers including 10 in. dual-voice coil subwoofer with Punch Control®, DTS® Neural Surround, PremiDIA-WIDE® surround, and Dolby® Volume <sup>7</sup>	—	—	PKG
STD	STD	STD	7.0 in. touch panel display audio system with 4 speakers	STD	—	—
STD	STD	STD	USB port	STD	—	—
STD	STD	STD	Dual USB ports	—	STD	STD
—	—	STD	SiriusXM® Satellite Radio with 3-mo. prepaid subscription <sup>3</sup>	—	STD	STD
STD	STD	—	Digital HD Radio <sup>8</sup>	STD	STD	STD
STD	STD	STD	Bluetooth® wireless technology with steering wheel mounted controls <sup>1</sup>	STD	STD	STD
—	—	—	Steering wheel audio controls	STD	STD	STD
—	—	—	Steering wheel voice controls	—	STD	STD
STD	STD	STD	Upshift indicator light (5MT only)	STD / —	—	—
STD	STD	STD	ECO indicator light (CVT only)	OPT / STD	STD	STD
—	STD	STD	Drive mode-selector (2WD/4WD AUTO/4WD LOCK)	— / STD	— / STD	— / STD
STD	—	—	Rearview camera	STD	STD	STD
STD	STD	STD	FAST-Key passive entry system with push button start and panic feature	—	STD	STD
STD	STD	STD	Remote keyless entry with panic feature	STD	—	—
STD	STD	STD	Automatic climate control	STD	STD	STD
—	—	STD	Micron air filtration	STD	STD	STD
—	STD	—	Rear heater floor ducts	STD	STD	STD

CONVENIENCE FEATURES (CONT.)	ES 2.0 2WD ES 2.0 AWC	SE 2.4 2WD SE 2.4 AWC	SEL 2.4 2WD SEL 2.4 AWC
Cruise control	STD	STD	STD
Power door locks	STD	STD	STD
Power windows with driver's auto up/down	STD	STD	STD
Auto-dimming rearview mirror with Homelink®	—	—	STD
Day/night rearview mirror	STD	STD	—
12-volt accessory outlets (x2)	STD	STD	STD
Center console box with armrest and cup holders	STD	STD	STD
Instrument panel lower-center storage	STD	STD	STD
Front door panel storage pockets with bottle holder	STD	STD	STD
Glove box	STD	STD	STD
Pocket tissue and pen holder	STD	STD	STD
Rear seat center armrest with cup holders	STD	STD	STD
Rear cargo compartment	STD	STD	STD
Cargo tie-down utility hooks	STD	STD	STD
Retractable assist grips	STD	STD	STD

SAFETY AND SECURITY	ES 2.0 2WD ES 2.0 AWC	SE 2.4 2WD SE 2.4 AWC	SEL 2.4 2WD SEL 2.4 AWC
Forward Collision Mitigation (FCM) <sup>8</sup>	—	—	PKG
Lane Departure Warning (LDW) <sup>9</sup>	—	—	PKG
Automatic High Beam (AHB) <sup>10</sup> headlights	—	—	PKG
Hill Start Assist (HSA)	STD	STD	STD
Anti-lock Braking System (ABS) with Electronic Brakeforce Distribution (EBD) and Brake Assist (BA)	STD	STD	STD
Active Stability Control (ASC)	STD	STD	STD
Traction Control Logic (TCL)	STD	STD	STD
Tire Pressure Monitoring System (TPMS)	STD	STD	STD
Side curtain airbags <sup>11</sup>	STD	STD	STD
Front seat-mounted side airbags <sup>11</sup>	STD	STD	STD
Driver's knee airbag <sup>11</sup>	STD	STD	STD
Advanced dual-stage SRS front airbags <sup>11</sup>	STD	STD	STD
Adjustable front shoulder belts with pretensioner	STD	STD	STD
Three-point seat belts and head restraints for all seating positions	STD	STD	STD
LATCH child-restraint system	STD	STD	STD
Child safety rear door locks	STD	STD	STD
Anti-theft alarm system and engine immobilizer	STD	STD	STD
RISE body construction	STD	STD	STD

#### ADDITIONAL EQUIPMENT

##### Touring Package available on SEL trim

- Panoramic glass roof with adjustable LED lighting
- 710-watt 9-speaker Rockford Fosgate® premium audio system<sup>7</sup>
- Forward Collision Mitigation (FCM)<sup>8</sup>
- Lane Departure Warning (LDW)<sup>9</sup>
- Automatic High Beam (AHB)<sup>10</sup> headlights

##### LED Illumination Package available on all trims

- Floor illumination (blue LEDs)
- Interior lights
- Tailgate illumination (blue LEDs)

##### All Weather Package available on all trims

- Cargo tray
- All weather floor mats (x4)

##### Cargo Mat Package available on all trims

- Reversible cargo mat
- Cargo net

##### Exterior Package available on all trims

- Large rear spoiler
- Rear undercover

##### Protection Package available on all trims

- Scuff plates
- Rear bumper plate
- Bright tailgate protector

##### Chrome Package available on all trims

- Side-view mirror covers
- Chrome door handle covers

##### Quick Value Package 3 available on all trims

- Reversible cargo mat
- Front and rear mud guards
- Wheel locks
- Cargo net

##### Quick Value Package 2 available on all trims

- Hood protector
- Roof rack crossbars

#### ADDITIONAL EQUIPMENT

**Alloy Fuel Door:** Available on all trims

**Roof Rack Crossbars:** Available on all trims

**Front and Rear Mudguards:** Available on all trims

**Tonneau Cover:** Available on all trims

**Carpeted Floor Mats and Portfolio:** Available on all trims

**Remote Engine Start:** Available on all trims

**Body Side Moldings:** Available on all trims

**LED Fog Lights:** Available on all trims

**Rear Park Assist Sensors:** Available on all trims

**Wheel Locks:** Available on all trims

**Rear Large Spoiler:** Available on all trims

**Hood Protector:** Available on all trims

#### FOOTNOTES

1. The Bluetooth word mark and logos are owned by the Bluetooth SIG, Inc., and any use of such marks by Mitsubishi is under license.
2. iPod is a registered trademark of Apple Inc.
3. SiriusXM services require a subscription sold separately, or as a package, by Sirius XM Radio Inc. If you decide to continue service after your trial, the subscription plan you choose will automatically renew thereafter and you will be charged according to your chosen payment method at then-current rates. Fees and taxes apply. To cancel you must call SiriusXM at 1-866-635-2349. See SiriusXM Customer Agreement for complete terms at www.siriusxm.com. All fees and programming subject to change. Sirius, XM, SiriusXM and all related marks and logos are trademarks of Sirius XM Radio Inc.
4. Based on EPA highway mileage rating. Actual mileage may vary.
5. Apple CarPlay and Siri are trademarks of Apple Inc., registered in the U.S. and other countries.
6. Google, Android, Android Auto, Google Play, and other marks are trademarks of Google Inc. To use Android Auto on your phone screen, you'll need an Android phone running 5.0 (Lollipop) or higher and the Android Auto app.
7. ©2017 Rockford Corporation. All Rights Reserved. ROCKFORD FOSGATE, PUNCH and associated logos where applicable are registered trademarks of Rockford Corporation in the United States and/or other countries. Specifications subject to change without notice.
8. The Forward Collision Mitigation (FCM)/Pedestrian Detection (PD) system is a driver aid only and is not a substitute for safe and careful driving. Under certain circumstances, the system may not detect other vehicles and/or pedestrians correctly.
9. The Lane Departure Warning system is designed to read the lane marks under certain conditions. It is not a collision avoidance system and is not a substitute for safe and careful driving.
10. The Automatic High Beam headlights system is a driver aid only. Factors such as a dirty windshield, variable weather, changing light conditions, or hilly terrain, may also affect system performance.
11. Airbags are part of a Supplemental Restraint System (SRS). To decrease the risk of injury from a deploying airbag, always wear your seat belt, sit upright in the middle of the seat, and do not lean against the door. Always place children 12 and under in the rear seat and use appropriate child restraints. Never place a rear-facing infant restraint in the front seat. See your Owner's Manual and instructions provided with your child restraint for additional information.
12. EPA estimates are to be used as a standardized comparison with other vehicles. Your actual mileage will vary depending on how you drive and maintain your vehicle.

**WARRANTY** See retailer for limited warranty and roadside assistance terms and conditions.

Powertrain	10-year/100,000-mile limited warranty	The 10-year/100,000-mile Powertrain Limited Warranty coverage terms are from the original in-service dates, and are applicable only to the original owner of new, retailed models purchased from an authorized Mitsubishi dealer. Subsequent owners receive the balance of the New Vehicle Limited Warranty of 5 years/60,000 miles. In addition, the Mitsubishi Outlander PHEV has a fully transferable 10-year/100,000-mile warranty on PHEV components and the Main Drive Lithium-ion battery. See retailer for limited warranty and roadside assistance terms and conditions.	Mitsubishi Motors North America, Inc. 6400 Katella Ave., Cypress, CA 90630-0064 1-888-MITSU2018
Basic	5-year/60,000-mile limited warranty		
Anti-corrosion/Perforation	7-year/100,000-mile limited warranty		
Roadside assistance	5-year/unlimited miles		
PHEV components main drive lithium-ion battery	10-year/100,000-mile limited warranty		

Log on to our website and browse our full lineup of new vehicles, get MSRP and customer rebate information, and "build" the Mitsubishi that's right for you. The site can help you locate your nearest dealer — or even have a dealer contact you.

MITSUBISHICARS.COM

Technical data, equipment, and options shown are based on the latest information available at the time of printing and are subject to change without notice. Colors may vary due to the printing process. Exterior and interior lights on vehicles shown may be illuminated for illustration purposes only. Vehicles are shown with optional equipment. Not all equipment is available on every model. For more complete details about equipment configuration and Mitsubishi Genuine Accessories, please contact your Mitsubishi Retailer.

World-class Warranties: We stand behind what we build. Period. The Outlander Sport is backed with a 10-year/100,000-mile Powertrain Limited Warranty, a 5-year/60,000-mile fully transferable New Vehicle Limited Warranty, a 7-year/100,000-mile Anti-Corrosion/Perforation Limited Warranty and 5 years/unlimited miles roadside assistance. They are some of the most comprehensive warranties in the industry. Like our cars, we intend to serve you well for many years to come.



## ADDITIONAL EQUIPMENT

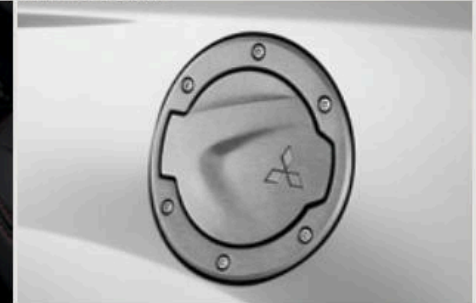
# BUILD THE MITSUBISHI THAT'S RIGHT FOR YOU

Make your vehicle as unique as you are with custom add-ons. With a variety of available accessories, you can personalize your Outlander Sport to best suit your lifestyle, whether it be adventure-packed to traverse the open road, or practical, to cruise through city streets. You can expect the utmost of quality, utility, and our signature design in all of our cars and accessories you've come to know and love.

SHIFT KNOB, ALUMINUM/LEATHER (CVT ONLY)



ALLOY FUEL DOOR



BODY SIDE MOLDINGS



SCUFF PLATES



ALL WEATHER FLOOR MATS



ROOF RACK CROSSBARS



At Mitsubishi Motors, we believe not all drivers are created equal. So we build our vehicles for a different breed of driver, the fearless ones who take pride in what they drive, and refuse to drive more of the same. It's obvious to us that people who truly want distinctive styling and the latest technology see past the procession of bland imitations. We believe that every vehicle we make should stand for something. Something more than expected. And that's why we don't build Mitsubishi cars for stereotypes. We build them for you.

MITSUBISHICARS.COM 1.888.MITSU2018 NATLBRO-18-005

