





## T H E M O R G A N C L A S S I C

A range of contemporary sports cars true to our one hundred year Morgan philosophy.

Pure, elegant, light and fast.

Using the best quality materials, aluminium, ash and leather, every Morgan is created with passion, care and dedication by our craftsmen and women.

Incorporating the most modern drivetrain technology, a Morgan not only performs but also delivers low running costs and low carbon emissions too.

THE BEST OF ALL WORLDS.



## S P O R T S E R I E S

What you see is what you get! Choosing your Morgan can be a daunting task, so we've made it easy for you. The Sport Series, either the fun and frugal 4/4, or the rapid 220 Bhp V6 Roadster comes with a simple yet comprehensive and well thought out specification.

8 choices of colour perfectly complement the classic shape and the standard tan leather upholstery. The Sport Series – everything you need.

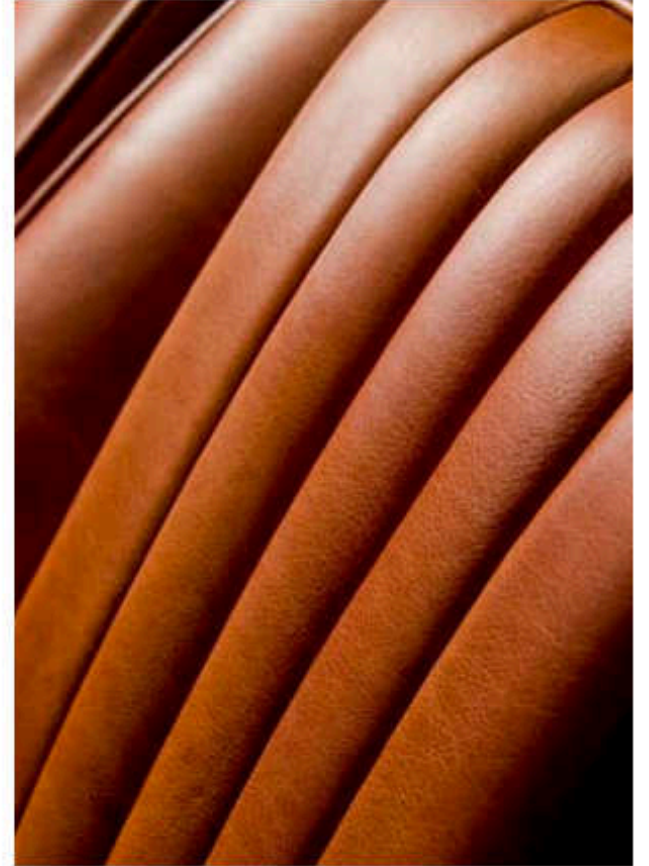


# 4 / 4 S P O R T

Elegant in its simplicity, sophisticated in its delivery, the 4/4 Sport personifies traditional open air motoring. World leading CO2 emissions don't compromise performance thanks to its light weight. Simply choose your colour and away you go.









## R O A D S T E R   S P O R T

A new introduction for 2010, the Roadster Sport adds performance and luxury to the basic formula.

With a minimal range of options to add to the comprehensive specification, which already includes a mohair hood and tonneau, black coloured stainless steel wire wheels and tan leather upholstery, the Roadster Sport offers style – pure and simple.

220 Bhp, a wider frame front for more secure handling yet still with 225 g/km Co2 emissions, the new Euro 5 Roadster Sport delivers performance with responsibility.





T R A D I T I O N A L  
C L A S S I C S E R I E S

For some, there is only one Morgan that will do – a bespoke specification chosen right down to the piping on the carpet. The Roadster V6 and Plus 4 2.0 litre can be tailored with a massive range of options, including 40,000 colours and over 100 leather choices.





## M O R G A N      P L U S      4

Available in both 2 and 4 seater forms, the lively 145 Bhp Plus 4 can be built to an almost infinite number of combinations. Now, with the wider front track to improve stability, subtly improved dashboard area and cockpit, plus new rear light treatment on the two seater, the Plus 4 remains the mainstay of Morgan production.



MORGAN

# R O A D S T E R

Increasing power by over 10%, yet with no more emissions, the Euro 5 compliant 220 Bhp V6 adds extra performance and flexibility to the Roadster range with no trade off.

Available as both a 2 and 4 seater, the wider front track gives more positive handling, and a range of minor updates keeps the traditional Morgan current in all departments.







As the oldest privately owned car business in the world, we retain the values which have always been at the heart of the company. Private ownership and a small management team allow us to innovate in ways no other car company can match.

Our Morgan cars are crafted from renewable or sustainable raw materials and are powered by modern, economical engines. Unique lightweight body construction means all our cars can deliver low CO2 emissions.

100 years of bespoke manufacture using traditional coach building techniques with modern engineering has resulted in a sports car beyond comparison. Most of our craftsmen started as apprentices, our 155 staff have over 2000 years of combined experience between them.

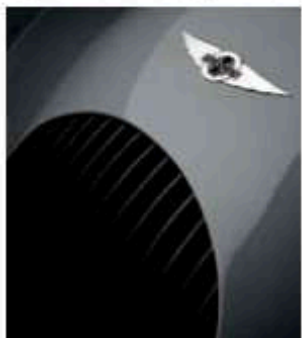
We use the latest design, engineering and production methods in our vehicle development to deliver the unique Morgan driving experience. Our emphasis is on only using technology where it counts, resulting in lightweight high performance cars.

*Charles Morgan*

## SPORT SERIES STANDARD OPTIONS

The Sport series is available in a range of 8 colours, all with tan leather upholstery. The Roadster Sport is available with the following options – Sun visors, Tan bonnet strap, Black Stone Guard and Natural Huntley Distressed Leather which quickly develops a personal patina.

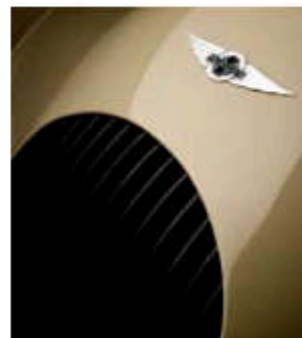
### Sport series paint options\*



Sport Grey



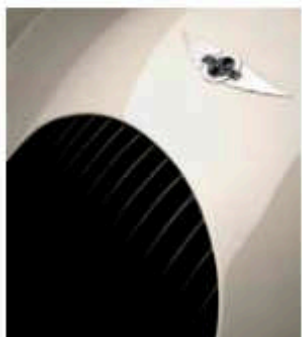
Sport Blue



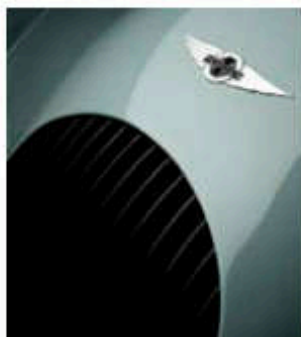
Sport Sand



Sport Red



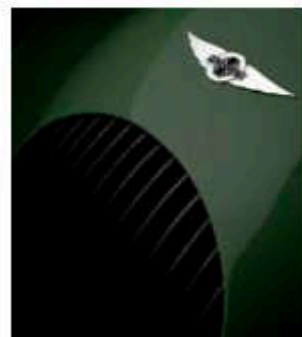
Sport Ivory



Sport Teal



Sport Black



Sport Green

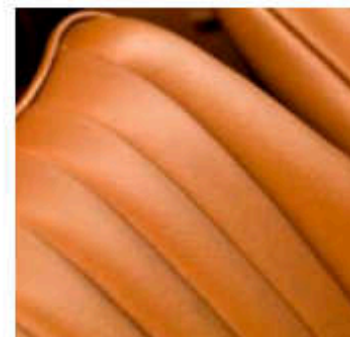
### Sport series standard spec



Sport badge



Painted dash\*\*



Tan leather



Black wire wheels

## CLASSIC RANGE OPTIONS

On a classic Plus 4 or Roadster, a wide range of options are available to choose from. Please contact your dealer for the current Morgan Price List.

\*All colours are printed representations. \*\*Car shown: Roadster Sport

# S P E C I F I C A T I O N S

Driving a Morgan is so much more than driving a piece of history. Timeless looks, performance and sophistication reflect one hundred years of a driving passion. For more information contact your local dealer or visit [www.morgan-motor.co.uk](http://www.morgan-motor.co.uk)

16.4/4	2.0 Plus 4	3.0 Roadster
Engine 1595cc 4 cylinder	Engine 1999cc 4 cylinder	Engine 2967cc V6
Max Power 82 kw (110 bhp) @ 6000 rpm	Max Power 106 kw (145 bhp) @ 6000 rpm	Max Power 165 kw (220 bhp) @ 6000 rpm
Max Torque 142 Nm (104 lbft)	Max Torque 187 Nm (140 lbft)	Max Torque 290 Nm (214 lbft)
Performance 0 - 62.80 seconds	Performance 0 - 62.75 seconds	Performance 0 - 62.49 seconds
Top Speed 115 mph (185 kph)	Top Speed 118 mph (189 kph)	Top Speed 134 mph (215 kph)
Dry Weight 795 kg	Dry Weight 877 kg	Dry Weight 938 kg
Power to weight 138 bhp/tonne	Power to weight 165 bhp/tonne	Power to weight 235 bhp/tonne
Fuel Consumption Urban - 34.3 mpg (8.3 l/100) Extra urban - 58.4 mpg (4.9 l/100) Combined - 45.9 mpg (6.2 l/100)	Fuel Consumption Urban - 27.9 mpg (10.2 l/100) Extra urban - 50.8 mpg (5.6 l/100) Combined - 39.0 mpg (7.3 l/100)	Fuel Consumption Urban - 20.4 mpg (13.9 l/100) Extra urban - 38.5 mpg (7.4 l/100) Combined - 29.0 mpg (9.8 l/100)
CO2 - 140g/km	CO2 - 172g/km	CO2 - 225g/km



[www.morgan-motor.co.uk](http://www.morgan-motor.co.uk)