

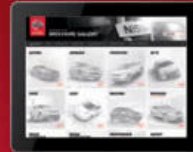


Innovation
that excites

2017
370Z[®]

SWIPE FOR MORE INFO

Download the Interactive Brochure Hub app on your tablet and you'll have Z[®] and the whole Nissan lineup at your fingertips. Get the full product story enhanced with interactive demos and videos, plus complete info on trim levels, colors, accessories, and more.



Nissan Interactive Brochure Hub available free on the App Store[®] and Google Play[®].

Or go to NissanUSA.com to view on your desktop.



NISSAN ROADSIDE ASSISTANCE

Your peace of mind is on us. For 36 months or 36,000 miles, whichever comes first, your new Nissan is covered for the following:¹

- Flat-tire changes
- Emergency fuel delivery
- Trip Interruption benefits
- Vehicle lockouts
- Jump starts

Los folletos de Nissan también están disponibles en español. Para descargar el PDF, visita: NissanUSA.com/folleto-espanol

And follow Nissan on:



visit NissanUSA.com/z


¹Roadside Assistance and Trip Interruption available during the first 3 years or 36,000 miles (whichever occurs first) after initial new vehicle delivery. Restrictions apply. See Owner's Manual for details. The App Store[®] is a registered trademark of Apple, Inc. All rights reserved. Facebook[®] is a registered trademark of Facebook, Inc. Google, Google Play, and YouTube[®] are registered trademarks of Google, Inc. Twitter[®] is a registered trademark of Twitter, Inc.

PRINTED IN USA



Innovation
that excites



A high-angle, dynamic shot of two Nissan 370Z sports cars driving on a road. In the foreground, a bright yellow Nissan 370Z Touring Sport Roadster is shown from a front-three-quarter view, with its top down. A driver is visible in the driver's seat. Behind it and slightly to the left, a silver Nissan 370Z Sport Coupe is driving in the same direction. The background is a blurred horizon under a bright, hazy sky, suggesting speed and an open road environment.

EMBRACE the rush. An unmistakable connection between driver and machine. Fire up that 3.7-liter V6 and hear 332 hp sing through dual exhaust pipes. Take it into a turn and feel the dynamically balanced chassis just grip and grip. Revel at the world's first available rev-matching manual transmission. The drive of your life is waiting – because no other sports car can match the legendary Z® for pure **EXHILARATION**.

Nissan 370Z® Touring Sport Roadster shown in Chicane Yellow and Nissan 370Z® Sport Coupe shown in Brilliant Silver.

THE ONE,
THE ONLY

Z[®]

A 7,500 RPM HEARTBEAT.

As long as there has been a Z, there has been a soulful 6-cylinder leading the way. In this case, the 4th generation of the VQ V6 engine. This 332-hp dynamo features advanced Variable Valve Event and Lift (VVEL) technology that continuously tunes valve lift and timing for quicker response and a broader torque curve, while optimizing fuel efficiency and reducing emissions. And while all this engineering may sound intriguing on paper, the exhilaration is pure, pulse-pounding magic.

THE DOWNSHIFT, PERFECTED.

A world's first. Included on the Sport models, SynchroRev Match[®] technology – the first in any production car – monitors the 6-speed manual's clutch pedal, shift lever, and vehicle speed. As you shift to a lower gear, the system will “blip” the throttle to the ideal engine rpm for a supremely smooth downshift as you let out the clutch. The system also works when upshifting to give you a smooth flow of power when accelerating.



THE DRIVER. FIRST AND FOREMOST.

In a sports car, every detail has to be right. That's why you'll find the main gauges adjust with the steering column, to help make sure you have a clear view. The center console controls are located within easy reach, and are easily identifiable by touch. There's even a uniquely bolstered driver's seat for enhanced support, featuring anti-slip material on the seat cushion to help hold you in place.

INSPIRATION

COMES STANDARD.

A PERFECT BALANCE OF CONFIDENCE AND CONTROL.

Designed to conquer every corner, the Nissan 370Z[®] starts with a low center of gravity and a short wheelbase for quick response. Bring it all together with an enthusiast's wish list of high-performance componentry, and you'll find pure joy as the 370Z elevates handling science into pure performance art.



THE FEELING OF UNLIMITED POSSIBILITIES.

Expanding the definition of “convertible weather.” The 370Z® Roadster is designed to let you enjoy top-down driving longer – whether it’s just later in the day, or later in the season.¹ Available heated and cooled seats help keep you comfortable even when there’s a chill in the air. Aerodynamic design helps minimize air buffeting in and around the cabin, for a quieter ride. And when it’s time to put up the top, a double-insulated roof helps keep the cabin warmer on cool days, and reduces interior noise, making this one roadster you’ll want to enjoy year-round.



¹Do not drive the vehicle with the top partially opened. Always make sure the top is either fully opened or closed before driving. See Owner's Manual for proper use.

nismo[®]

What happens when the fanatical engineers at NISMO are let loose on the 370Z[®]? You get 350 horsepower surrounded by a NISMO-tuned suspension and a driver-focused interior, all wrapped in a jaw-dropping NISMO-designed aerodynamic body. Obsessive? Perhaps. Extraordinary? Most definitely.

350_{HP}



Competition-tuned handling. Competition-inspired design. Serious grip starts with specially tuned springs, shocks, and stabilizer bars designed to satisfy the most demanding enthusiast. Extra braces on the front strut tower bar and special vibration dampers on the front body frame rail and rear subframe are added for impressive overall body rigidity and the feel of a controlled ride. A true work of performance art, the 370Z NISMO entices the eye with its 19" RAYS[®] forged alloy wheels, high downforce body, aggressive front and rear fascias, and rear diffuser.

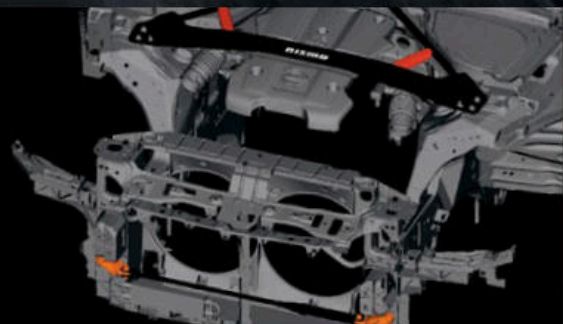
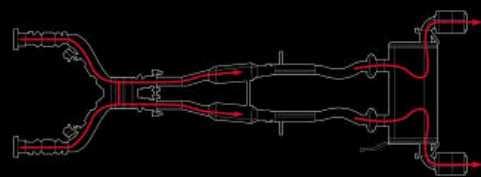
H-PIPE FREE-FLOW DUAL EXHAUST

HANDLING ENHANCEMENTS

WHEELS BY RAYS[®]

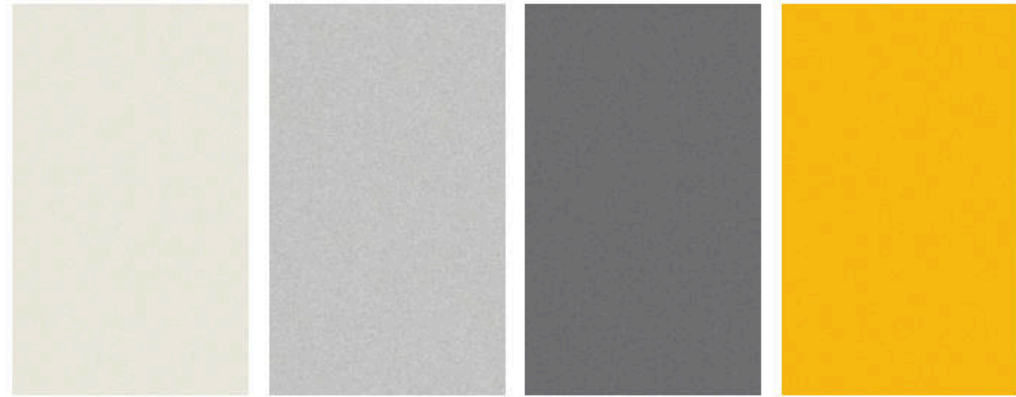
SUSPENSION AND BRAKES

SIGNATURE INTERIOR



Professional driver. Closed course. Obey all traffic laws, always drive safely and wear your seat belt. Damage resulting from racing, competitive driving, track and/or airstrip use not covered by warranty. See your New Vehicle Limited Warranty and Owner's Manual for proper vehicle operation and complete warranty details. RAYS[®] is a registered trademark of RAYS Engineering.

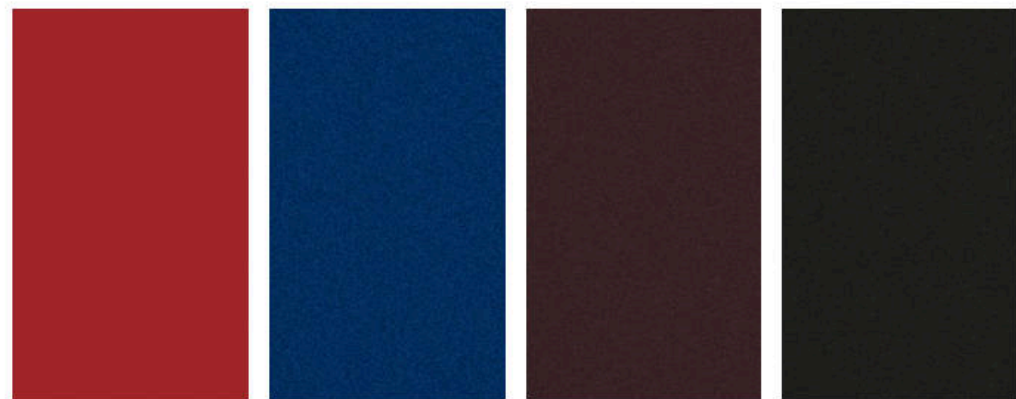
CHOOSE YOUR EXTERIOR COLOR



Pearl White¹ QAB Brilliant Silver K23 Gun Metallic KAD Chicane Yellow EAC

370Z[®] SPORT TOUR NISMO[®] 370Z[®] SPORT TOUR NISMO[®] 370Z[®] SPORT TOUR NISMO[®] 370Z[®] SPORT TOUR NISMO[®]

	370Z [®] SPORT	TOUR	NISMO [®]
BLACK CLOTH	■	■ ²	
GRAY LEATHER			■ ³
BLACK LEATHER			■
PERSIMMON LEATHER ²			■
WINE LEATHER ³			■
NISMO BLACK LEATHER/ RED ALCANTARA [®] INSERTS ²			■



Solid Red A54 Deep Blue Pearl RAY Black Cherry NAG Magnetic Black G41

370Z[®] SPORT TOUR NISMO[®] 370Z[®] SPORT TOUR NISMO[®] 370Z[®] SPORT TOUR NISMO[®] 370Z[®] SPORT TOUR NISMO[®]

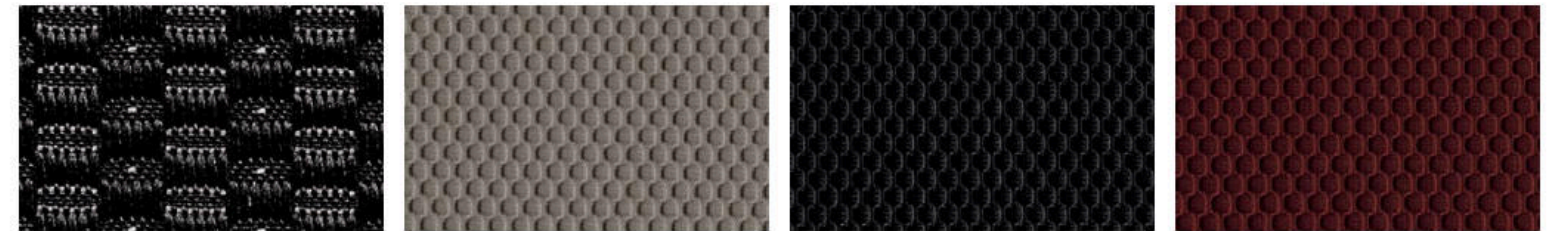
	370Z [®] SPORT	TOUR	NISMO [®]
BLACK CLOTH	■	■ ²	
GRAY LEATHER			■ ³
BLACK LEATHER			■
PERSIMMON LEATHER ²			■
WINE LEATHER ³			■
NISMO BLACK LEATHER/ RED ALCANTARA [®] INSERTS ²			■

■ Standard
¹Extra cost option.
²Coupe only.
³Roadster only.
 Nissan has taken care to ensure that the color swatches presented here are the closest possible representations of actual vehicle colors. Swatches may vary slightly due to the printing process and whether viewed in daylight, fluorescent or incandescent light. Please see the actual colors at your local Nissan dealer. Alcantara[®] is a registered trademark of Alcantara S.p.A. Corporation.

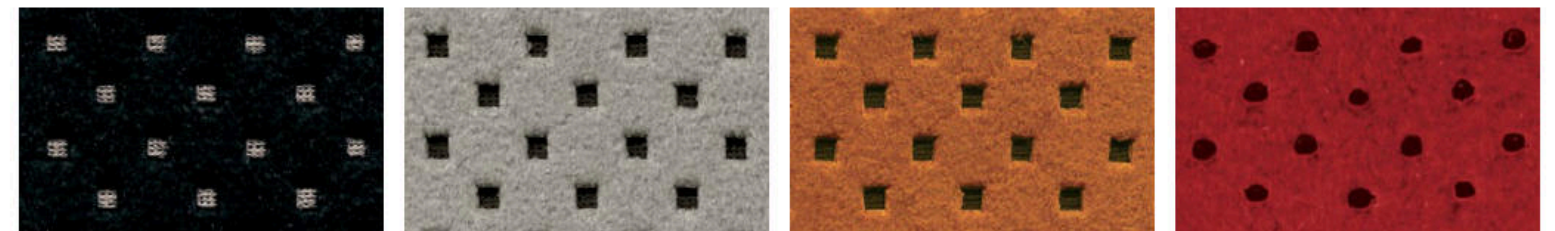
CHOOSE YOUR INTERIOR COLOR



370Z[®] Touring Coupe shown in Black Leather.



Black Cloth Coupe | Roadster Gray Leather Roadster Black Leather Roadster Wine Leather Roadster



Black Leather Coupe Gray Leather Coupe Persimmon Leather Coupe Black Leather/Red Alcantara[®] Inserts NISMO

CHOOSE YOUR TRIM LEVEL

COUPE

370Z®

- 332 hp, 270 lb.-ft. of torque
- 3.7-liter V6, twin-intake system
- 6-speed manual transmission
- Optional 7-speed automatic transmission with manual shift mode and Downshift Rev Matching
- Ripple-control and sport-tuned shock absorbers
- 3-point front strut tower brace
- 18" Black-finish aluminum-alloy wheels
- Yokohama® ADVAN Sport® high-performance W-rated tires
- High Intensity Discharge (HID) bi-functional xenon headlights
- LED Daytime Running Lights
- LED taillights
- Z® fender emblems
- Bluetooth® Hands-free Phone System¹
- Nissan Intelligent Key® with Push Button Ignition
- Upshift indicator light (manual transmission only)
- 8-way adjustable driver's seat
- Driver-shaped bucket seat with thigh support
- 4-way adjustable passenger's bucket seat
- Driver and passenger knee support
- Cloth seat trim
- USB connection port for iPod® interface and other compatible devices²
- Six standard air bags



SPORT

INCLUDES 370Z EQUIPMENT PLUS:

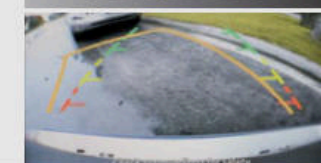
- SynchroRev Match® (manual transmission only)
- Paddle shifters (automatic transmission only)
- Nissan sport brakes – 14.0" 4-piston front brakes/13.8" 2-piston rear brakes with red brake calipers
- Viscous Limited-Slip Rear Differential
- 19" RAYS® forged alloy wheels
- Bridgestone® Potenza® RE050A high-performance W-rated tires
- LED illuminated Z® side marker emblems
- Front chin aero deflector
- Body-color rear spoiler
- Bose® Premium Audio System with eight speakers, including two subwoofers
- Active Noise Cancellation
- Active Sound Enhancement



SPORT TECH

INCLUDES 370Z SPORT EQUIPMENT PLUS:

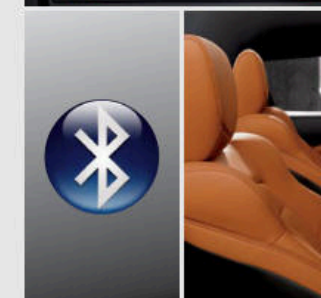
- Nissan Hard Drive Navigation System with touch-screen monitor and Voice Recognition³
- NavTraffic® and NavWeather® provided by SiriusXM®⁴
- RearView Monitor⁵
- HomeLink® Universal Transceiver
- Auto-dimming rearview mirror
- Streaming audio via Bluetooth® wireless technology¹
- SiriusXM® Satellite Radio⁴



TOURING

INCLUDES 370Z EQUIPMENT PLUS:

- Paddle shifters (automatic transmission only)
- LED illuminated Z side marker emblems
- Nissan Hard Drive Navigation System with touch-screen monitor and Voice Recognition³
- NavTraffic® and NavWeather® provided by SiriusXM®⁴
- RearView Monitor⁵
- HomeLink® Universal Transceiver
- Auto-dimming rearview mirror
- Driver's adjustable lumbar support
- Leather-appointed, power heated sport seats with synthetic suede inserts
- Aluminum-trimmed pedals
- Bose® Premium Audio System with eight speakers, including two subwoofers, streaming audio via Bluetooth® wireless technology¹
- Active Noise Cancellation
- Active Sound Enhancement
- SiriusXM® Satellite Radio⁴



¹Availability of specific features is dependent upon the phone's Bluetooth® support. Please refer to your phone Owner's Manual for details. Bluetooth® word mark and logos are owned by Bluetooth SIG, Inc., and any use of such marks by Nissan is under license. See NissanUSA.com/bluetooth for details. ²Driving is serious business and requires your full attention. If you have to use the connected device while driving, exercise extreme caution at all times so full attention may be given to vehicle operation. iPod® is a registered trademark of Apple, Inc. All rights reserved. iPod® or other external device not included. ³Never program while driving. GPS mapping may not be detailed in all areas or reflect current road status. ⁴Required monthly subscriptions sold separately for each available SiriusXM feature after trial period, and are continuous until you call SiriusXM to cancel. Installation costs, one-time activation fee, other fees and taxes will apply. Each SiriusXM feature availability is dependent upon vehicle model, trim level, packaging, and/or options, and may only be available in select markets. Satellite Radio U.S. service, NavWeather® service, and SiriusXM Travel Link® services (if any of the foregoing features are equipped on vehicle) available only to those 18 or older in the 48 contiguous states and D.C. Fees and programming subject to change. Subscriptions governed by Customer Agreement available at siriusxm.com. ©2016 Sirius XM Radio Inc. Sirius, XM® and all related marks and logos are trademarks of Sirius XM Radio Inc. ⁵Parking aid/convenience feature. Cannot completely eliminate blind spots. May not detect every object and does not warn of moving objects. Always check surroundings and turn to look behind you before moving vehicle. Bose® is a registered trademark of The Bose Corporation. Bridgestone® and Potenza® are registered trademarks of Bridgestone Corporation. HomeLink® is a registered trademark of Genex Corporation. RAYS® is a registered trademark of RAYS Engineering. Yokohama® and ADVAN Sport® are registered trademarks of The Yokohama Tire Corporation.

CHOOSE YOUR TRIM LEVEL

NISMO®

NISMO INCLUDES 370Z® EQUIPMENT PLUS:

- 350 hp, 276 lb.-ft. of torque, 3.7-liter V6
- NISMO-tuned free-flow dual exhaust with H-pipe configuration
- 6-speed manual transmission with SynchroRev Match®
- Black Magnesium paddle shifters (automatic transmission only)
- Viscous Limited-Slip Rear Differential
- Nissan sport brakes – 14.0" 4-piston front brakes/13.8" 2-piston rear brakes with red brake calipers
- High-rigidity brake hoses and R35 Special II brake fluid
- NISMO-tuned suspension with increased spring, dampening, and stabilizer rates
- NISMO-reinforced 3-point front strut tower brace
- NISMO front and rear performance body dampers
- 19" NISMO forged alloy wheels by RAYS®
- Bridgestone® Potenza® S001 high-performance Y-rated tires
- NISMO aerodynamic body design – front and rear fascia, spoiler side sills, and rear spoiler
- NISMO tachometer
- NISMO Recaro® leather-appointed seats with Alcantara® inserts
- NISMO Alcantara®/leather-wrapped steering wheel and smooth leather-wrapped shift knob
- NISMO signature red interior stitching
- Bose® Premium Audio System with eight speakers, including two subwoofers
- Active Noise Cancellation
- Active Sound Enhancement



NISMO TECH INCLUDES 370Z NISMO EQUIPMENT PLUS:

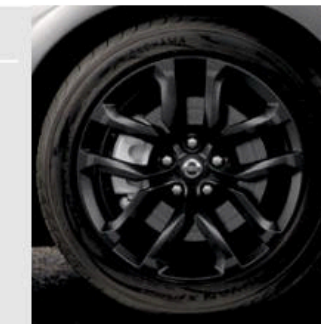
- Nissan Hard Drive Navigation System with touch-screen monitor and Voice Recognition¹
- NavTraffic® and NavWeather® provided by SiriusXM®²
- RearView Monitor³
- HomeLink® Universal Transceiver
- Auto-dimming rearview mirror
- Streaming audio via Bluetooth® wireless technology⁴
- SiriusXM® Satellite Radio²



ROADSTER

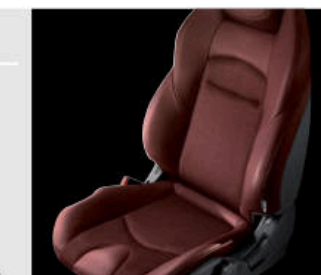
370Z

- 332 hp, 270 lb.-ft. of torque
- 3.7-liter V6, twin-intake system
- 7-speed automatic transmission with manual shift mode and Downshift Rev Matching
- Paddle shifters
- Ripple-control and sport-tuned shock absorbers
- 3-point front strut tower brace
- 18" Black-finish aluminum-alloy wheels
- Yokohama® ADVAN Sport® high-performance W-rated tires
- High Intensity Discharge (HID) bi-functional xenon headlights
- LED Daytime Running Lights
- LED taillights
- LED illuminated Z® side marker emblems
- Power convertible soft-top with glass window
- Rear glass window deflector
- Power moving tonneau cover
- Bluetooth® Hands-free Phone System⁴
- Nissan Intelligent Key® with Push Button Ignition
- 8-way adjustable driver's seat
- Driver-shaped bucket seat with thigh support
- 4-way adjustable passenger's bucket seat
- Driver and passenger knee support
- Cloth seat trim
- USB connection port for iPod® interface and other compatible devices⁵
- Six standard air bags



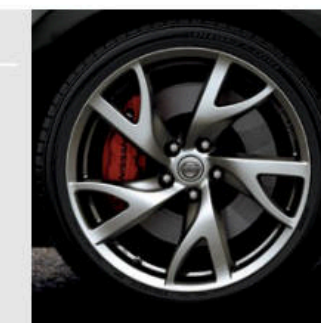
TOURING INCLUDES 370Z ROADSTER EQUIPMENT PLUS:

- Standard 6-speed manual transmission
- Optional 7-speed automatic transmission with manual shift mode and Downshift Rev Matching
- Paddle shifters (automatic transmission only)
- Upshift indicator light (manual transmission only)
- Nissan Hard Drive Navigation System with touch-screen monitor and Voice Recognition¹
- NavTraffic® and NavWeather® provided by SiriusXM®²
- RearView Monitor³
- HomeLink® Universal Transceiver
- Auto-dimming rearview mirror
- Driver's adjustable lumbar support
- Ventilated, leather-appointed seats
- Climate-controlled seats (heated and cooled)
- Aluminum-trimmed pedals
- Bose® Premium Audio System with eight speakers, including two subwoofers
- Streaming audio via Bluetooth® wireless technology⁴
- SiriusXM® Satellite Radio²



TOURING SPORT INCLUDES 370Z TOURING EQUIPMENT PLUS:

- SynchroRev Match® (manual transmission only)
- Viscous Limited-Slip Rear Differential
- Nissan sport brakes – 14.0" 4-piston front brakes/13.8" 2-piston rear brakes with red brake calipers
- 19" RAYS® forged alloy wheels
- Bridgestone® Potenza® RE050A high-performance W-rated tires



¹Never program while driving. GPS mapping may not be detailed in all areas or reflect current road status. ²Required monthly subscriptions sold separately for each available SiriusXM feature after trial period, and are continuous until you call SiriusXM to cancel. Installation costs, one-time activation fee, other fees and taxes will apply. Each SiriusXM feature availability is dependent upon vehicle model, trim level, packaging, and/or options, and may only be available in select markets. Satellite Radio U.S. service, NavWeather® service, and SiriusXM Travel Link® services (if any of the foregoing features are equipped on vehicle) available only to those 18 or older in the 48 contiguous states and D.C. Fees and programming subject to change. Subscriptions governed by Customer Agreement available at siriusxm.com. ©2016 Sirius XM Radio Inc. Sirius, XM and all related marks and logos are trademarks of Sirius XM Radio Inc. ³Parking aid/convenience feature. Cannot completely eliminate blind spots. May not detect every object and does not warn of moving objects. Always check surroundings and turn to look behind you before moving vehicle. ⁴Availability of specific features is dependent upon the phone's Bluetooth® support. Please refer to your phone Owner's Manual for details. Bluetooth® word mark and logos are owned by Bluetooth SIG, Inc., and any use of such marks by Nissan is under license. See NissanUSA.com/bluetooth for details. ⁵Driving is serious business and requires your full attention. If you have to use the connected device while driving, exercise extreme caution at all times so full attention may be given to vehicle operation. iPod® is a registered trademark of Apple, Inc. All rights reserved. iPod® or other external device not included. ADVAN Sport® and Yokohama® are registered trademarks of Yokohama Tire Corporation. Alcantara® is a registered trademark of Alcantara S.p.A. Corporation. Bose® is a registered trademark of The Bose Corporation. Bridgestone® and Potenza® are registered trademarks of Bridgestone Corporation. HomeLink® is a registered trademark of Gentex Corporation. RAYS® is a registered trademark of RAYS Engineering. Recaro® is a registered trademark of Recaro North America Inc.

CHOOSE YOUR ACCESSORIES



Every Genuine Nissan Accessory is custom-fit, custom-designed and durability-tested. Each one is backed by Nissan's 3-year/36,000-mile (whichever occurs first) limited warranty (if installed by dealer at the time of purchase)¹ and can be financed when installed by dealer at time of purchase.

A. Vehicle Cover

Helps protect your Z[®] from dust and debris when parked outdoors.

B. NISMO[®] Rear Decklid Spoiler

To the winner go the spoilers.

C. Carpeted Floor Mats

Preserve and protect in style.

D. NISMO Shift Knobs

Put legendary performance in the palm of your hand.

E. Illuminated Kick Plates (2-piece set)

A grand entry every time you get in.

F. NISMO Cat-back Exhaust System

More horsepower, more torque, and more aggressive sound.

G. NISMO Spring, Shocks and Struts Kit

Take your handling to the next level.

H. Front Chin Aero Deflector

Less turbulence. More downforce. Aggression with purpose.

ADDITIONAL ACCESSORIES:

- Rear Decklid Spoiler
- Splash Guards
- NISMO Stabilizer Kit
- Premium Carpeted Floor Mats
- Carpeted Trunk Mat
- Nissan Valve Stem Caps
- And More

GENUINE NISSAN ACCESSORIES

TAKE PART IN PUBLIC DISPLAYS OF AFFECTION.

For more information and to shop online for 370Z[®] Genuine Nissan Accessories, go to bit.ly/17370Z-estore



Nissan 370Z[®] Sport Coupe shown in Gun Metallic with Front Chin Aero Deflector (standard on Sport and Sport Tech trims), NISMO[®] Rear Decklid Spoiler, and NISMO[®] Graphics Kit.

¹Genuine Nissan Accessories are covered by Nissan's Limited Warranty on Genuine Nissan Replacement Parts, Genuine NISMO[®] S-Tune Parts, and Genuine Nissan Accessories for the longer of 12 months/12,000 miles (whichever occurs first) or the remaining period under the 3-year/36,000-mile (whichever occurs first) Nissan New Vehicle Limited Warranty. Terms and conditions apply. See Warranty Information Booklet for details.

SPECIFICATIONS

	370Z ^a	Sport ¹	Sport Tech ¹	Touring	Touring Sport ²	NISMO ³	NISMO ³ Tech ¹
Engine							
VQ37VHR – 3.7-liter DOHC 24-valve V6 aluminum-alloy engine ³	■	■	■	■	■	■	■
Horsepower – 332 hp @ 7,000 rpm	■	■	■	■	■	■	■
350 hp @ 7,400 rpm							■
Torque – 270 lb.-ft. @ 5,200 rpm	■	■	■	■	■	■	■
276 lb.-ft. @ 5,200 rpm							■
Bore x stroke – 95.5 x 86.0 mm	■	■	■	■	■	■	■
Compression ratio – 11.1:1	■	■	■	■	■	■	■
Maximum engine speed – 7,500 rpm	■	■	■	■	■	■	■
Emissions – Tier2-Bin5 (Fed); LEV2-ULEV (CA)	■	■	■	■	■	■	■
Continuously Variable Valve Timing Control System (CVTCS) with Variable Valve Event and Lift (VVEL) on intake valves	■	■	■	■	■	■	■
Twin-intake system	■	■	■	■	■	■	■
Nissan Direct Ignition System with iridium-tipped spark plugs	■	■	■	■	■	■	■
Electronic drive-by-wire throttle	■	■	■	■	■	■	■
NISMO®-tuned free-flow dual exhaust with H-pipe configuration							■

Drivetrain							
Longitudinally mid-mounted front engine/Rear-Wheel Drive	■	■	■	■	■	■	■
Carbon-fiber composite driveshaft	■	■	■	■	■	■	■
6-speed close-ratio manual transmission	■ ¹	■	■	■	■	■	■
SynchroRev Match ⁴		■	■	■	■	■	■
7-speed automatic transmission with manual shift mode and Downshift Rev Matching	□ ¹ ■ ²	□	□	□	□	□	□
Paddle shifters ⁵	■ ²	□	□	□	□	□	□
Black Magnesium paddle shifters ⁵						□	□
Viscous Limited-Slip Rear Differential		■	■	■	■	■	■

Brakes							
12.6" x 1.10" vented front discs and 12.6" x 0.63" vented rear discs	■	■	■	■	■	■	■
Nissan sport brakes – 4-piston opposed aluminum calipers with 14.0" x 1.30" vented front discs and 2-piston opposed aluminum calipers with 13.8" x 0.80" vented rear discs		■	■	■	■	■	■
High-rigidity brake hoses and R35 Special II brake fluid	■	■	■	■	■	■	■
4-wheel Anti-lock Braking System (ABS)	■	■	■	■	■	■	■
Electronic Brake force Distribution (EBD)	■	■	■	■	■	■	■
Brake Assist ⁶	■	■	■	■	■	■	■

Suspension/Chassis Bracing/Steering							
2-link double-wishbone aluminum-alloy front suspension with aluminum subframe	■	■	■	■	■	■	■
4-link aluminum-alloy rear suspension	■	■	■	■	■	■	■
Front and rear stabilizer bars	■	■	■	■	■	■	■
Ripple-control shock absorbers	■	■	■	■	■	■	■
Sport-tuned shock absorbers	■	■	■	■	■	■	■
NISMO-tuned suspension with increased spring, dampening, and stabilizer rates						■	■
3-point front strut tower brace	■	■	■	■	■	■	■

■ Standard □ Optional

Suspension/Chassis Bracing/Steering (cont.)	370Z ^a	Sport ¹	Sport Tech ¹	Touring	Touring Sport ²	NISMO ³	NISMO ³ Tech ¹
NISMO reinforced 3-point front strut tower brace						■	■
Rear underbody V-brace	■	■	■	■	■	■	■
NISMO front and rear performance body dampers						■	■
Vehicle-speed-sensitive power steering	■	■	■	■	■	■	■

Wheel/Tires							
18" x 8.0" (front)/18" x 9.0" (rear) black-finish aluminum-alloy wheels	■	■	■	■	■	■	■
19" x 9.0" (front)/19" x 10.0" forged alloy wheels by RAYS ⁸		■	■	■	■	■	■
19" x 9.5" (front)/19" x 10.5" (rear) NISMO forged alloy wheels by RAYS ⁸						■	■
225/50WR18 (front) and 245/45WR18 (rear) Yokohama® ADVAN Sport® high-performance tires	■			■			
245/40WR19 (front) and 275/35WR19 (rear) Bridgestone® Potenza® RE050A high-performance tires		■	■		■		
245/40YR19 (front) and 285/35YR19 (rear) Bridgestone® Potenza® SO01 high-performance tires						■	■

Exterior Features							
Automatic on/off headlights	■	■	■	■	■	■	■
High Intensity Discharge (HID) bi-functional xenon headlights	■	■	■	■	■	■	■
LED Daytime Running Lights	■	■	■	■	■	■	■
LED taillights	■	■	■	■	■	■	■
Z ⁷ fender emblems	■ ¹						
LED illuminated Z side marker emblems	■ ²	■	■	■	■	■	■
Front chin aero deflector		■	■				
Body-color rear spoiler		■	■				
NISMO aerodynamic body design – front and rear fascia, spoiler side sills and rear spoiler							■
Aluminum hood, doors and hatch/trunk ²	■	■	■	■	■	■	■
Heated outside mirrors	■ ²	■	■	■	■	■	■
Power convertible soft-top with glass window	■ ²			■ ²	■		
Rear wind deflector and power moving tonneau cover	■ ²			■ ²	■		

Comfort/Convenience							
Nissan Hard Drive Navigation System with 7.0" VGA touch-screen monitor and voice recognition ⁷			■	■	■	■	■
NavTraffic® and NavWeather® provided by SiriusXM® ⁸			■	■	■	■	■
RearView Monitor ⁹			■	■	■	■	■
Automatic Temperature Control (ATC) with in-cabin microfilter	■	■	■	■	■	■	■
Bluetooth® Hands-free Phone System ¹⁰	■	■	■	■	■	■	■
3-bay gauge cluster (oil temperature, voltmeter and digital clock)	■	■	■	■	■	■	■
Fine Vision electroluminescent gauges with multi-function drive computer	■	■	■	■	■	■	■
Upshift indicator light ⁴	■ ¹	■	■	■	■	■	■
NISMO tachometer						■	■
Nissan Intelligent Key® with Push Button Ignition	■	■	■	■	■	■	■

Comfort/Convenience (continued)	370Z ^a	Sport ¹	Sport Tech ¹	Touring	Touring Sport ²	NISMO ³	NISMO ³ Tech ¹
Remote windows down	■	■	■	■	■	■	■
Cruise control	■	■	■	■	■	■	■
HomeLink® Universal Transceiver			■	■	■	■	■
Auto-dimming rearview mirror			■	■	■	■	■
12-volt DC power outlets (two) and map lights	■	■	■	■	■	■	■
Tilt steering column with integrated gauges	■	■	■	■	■	■	■
Rear cargo cover				■	■	■	■

Seating/Appointments							
8-way adjustable driver's seat	■	■	■	■	■	■	■
Driver-shaped bucket seat with thigh support	■	■	■	■	■	■	■
Driver's adjustable lumbar support	■	■	■	■	■	■	■
4-way adjustable passenger's bucket seat				■	■		
Power seats				■	■		
Heated seats				■ ¹			
Climate-controlled seats (heated and cooled)				■ ²	■		
Driver and passenger knee support	■	■	■	■	■	■	■
Cloth seat trim	■	■	■				
Leather-appointed sport seats with synthetic suede inserts				■ ¹			
Ventilated leather-appointed sport seats				■ ²	■		
NISMO Recaro® leather-appointed seats with Alcantara® inserts						■	■
Synthetic suede door panel inserts				■	■		
Leather-wrapped steering wheel and shift knob	■	■	■	■	■		
NISMO Alcantara®/leather-wrapped steering wheel and smooth leather-wrapped shift knob						■	■
Aluminum-trimmed pedals				■	■	■	■
NISMO signature red interior stitching						■	■

Audio/Entertainment							
AM/FM/CD audio system with four speakers	■	■	■	■	■	■	■
Bose® Premium Audio System		■	■	■	■	■	■
Eight speakers, including two subwoofers		■	■	■	■	■	■
Active Noise Cancellation		■	■	■	■	■	■
Active Sound Enhancement				■ ¹			
DVD video playback capability				■	■	■	■
Auxiliary audio input Jack ¹¹	■	■	■	■	■	■	■
Auxiliary audio/video input jacks ¹¹	■	■	■	■	■	■	■
USB connection port for iPod® interface and other compatible devices ¹¹	■	■	■	■	■	■	■
Streaming audio via Bluetooth® wireless technology ¹⁰				■	■	■	■
SiriusXM® Satellite Radio®				■	■	■	■
Speed-sensitive volume control				■	■	■	■

Safety/Security							
Nissan Advanced Air Bag System with dual-stage supplemental front air bags with seat belt and occupant classification sensors	■	■	■	■	■	■	■
Driver and passenger seat-mounted side-impact supplemental air bags	■	■	■	■	■	■	■

Safety/Security (continued)	370Z ^a	Sport ¹	Sport Tech ¹	Touring	Touring Sport ²	NISMO ³	NISMO ³ Tech ¹
Roof-mounted curtain side-impact supplemental air bags for occupants head protection ¹	■	■	■	■	■	■	■
Door-mounted curtain side-impact supplemental air bags for occupants head protection ²	■				■		
Vehicle Dynamic Control (VDC) with Traction Control System (TCS)	■	■	■	■	■	■	■
Active Head Restraints	■	■	■	■	■	■	■
Tire Pressure Monitoring System (TPMS) ¹²	■	■	■	■	■	■	■

DIMENSIONS/CAPACITIES/MPG

Aerodynamics – Cd		
Drag coefficient	.30 on Coupe and NISMO, .29 for Sport trims	
	.33 on Roadster, .34 for Sport trim	

Capacities	
Interior volume (cu. ft.)	51.6
Cargo volume (cu. ft.)	6.9 (4.2 on Roadster)

2016 EPA Fuel Economy Estimates		
City/Hwy/Combined MPG	Coupe	Roadster
Manual transmission	18/26/21	17/24/20
Automatic transmission	19/26/21	18/25/21
Fuel economy based on 2016 EPA fuel economy estimates. EPA data not available at time of publication. Actual mileage may vary with driving conditions – use for comparison only.		

¹Coupe only. ²Roadster only. ³Premium fuel required. ⁴Manual transmission only. ⁵Automatic transmission only. ⁶Brake Assist is only an aid to assist the driver and is not a collision warning or avoidance device. It is the driver's responsibility to be in control of the vehicle at all times. ⁷Never program while driving. GPS mapping may not be detailed in all areas or reflect current road status. ⁸Required monthly subscriptions sold separately for each available SiriusXM feature after trial period, and are continuous until you call SiriusXM to cancel. Installation costs, one-time activation fee, other fees and taxes will apply. Each SiriusXM feature availability is dependent upon vehicle model, trim level, packaging, and/or options, and may only be available in select markets. Satellite Radio U.S. service, NavWeather[®] service, and SiriusXM Travel Link[®] services (if any of the foregoing features are equipped on vehicle) available only to those 18 or older in the 48 contiguous states and D.C. Fees and programming subject to change. Subscriptions governed by Customer Agreement available at siriusxm.com. ©2016 Sirius XM Radio Inc. Sirius, XM[®] and all related marks and logos are trademarks of Sirius XM Radio Inc. ⁹Parking aid/convenience feature. Cannot completely eliminate blind spots. May not detect every object and does not warn of moving objects. Always check surroundings and turn to look behind you before moving vehicle. ¹⁰Availability of specific features is dependent upon the phone's Bluetooth[®] support. Please refer to your phone Owner's Manual for details. Bluetooth[®] word mark and logos are owned by Bluetooth SIG, Inc. and any use of such marks by Nissan is under license. See NissanUSA.com/bluetooth for details. ¹¹Driving is serious business and requires your full attention. If you have to use the connected device while driving, exercise extreme caution at all times so full attention may be given to vehicle operation. iPod[®] is a registered trademark of Apple, Inc. All rights reserved. iPod[®] or other external device not included. ¹²TPMS is not a substitute for regular tire pressure checks. Alcantara[®] is a registered trademark of Alcantara S.p.A. Corporation. Bose[®] is a registered trademark of The Bose Corporation. Bridgestone[®] and Potenza[®] are registered trademarks of Bridgestone Corporation. HomeLink[®] is a registered trademark of Genex Corporation. RAYS[®] is a registered trademark of RAYS Engineering. Recaro[®] is a registered trademark of Recaro North America Inc. Yokohama[®] and ADVAN Sport[®] are registered trademarks of The Yokohama Tire Corporation. This brochure is intended for general descriptive and informational purposes only. It is subject to change and does not constitute an offer, representation or warranty (express or implied) by Nissan North America, Inc. Interested parties should confirm the accuracy of any information in this brochure as it relates to a vehicle directly with Nissan North America, Inc., before relying on it to make a purchase decision. Nissan North America, Inc., reserves the right to make changes, at any time, without prior notice, in prices, colors, materials, equipment, specifications, and models and to discontinue models or equipment. Due to continuous product development and other pre- and post-production factors, actual vehicle, materials and specifications may vary from this brochure. Some vehicles shown with optional equipment. See the actual vehicle for complete accuracy. Availability and delivery times for particular models or equipment may vary. Specifications, options and accessories may differ in Hawaii, U.S. territories and other countries. For additional information on availability, options or accessories, see your Nissan dealer or contact Nissan North America, Inc. At NissanUSA.com, you'll find virtual product demonstrations, a way to "build your own Nissan," a dealer locator, and more information about key Nissan support services. Or if you'd prefer, call 1-800-NISSAN-3 for answers to specific questions about '17 Z or any other Nissan vehicle. The Nissan names, logos, product names, feature names, and slogans are trademarks owned by or licensed to Nissan Motor Co. Ltd. and/or its North American subsidiaries. Other trademarks and trade names are those of their respective owners. Always wear your seat belt, and please don't drink and drive. ©2016 Nissan North America, Inc. '17 Z. 1718253-N-4/16-100M-CGI