

## NISSAN INTELLIGENT MOBILITY

Intelligent Mobility guides everything we do. We're using new technologies to transform cars from mere driving machines into partners. Together the journey is more confident, connected, and exciting. Whether it's cars that share the task of driving with you, or highways that charge your EV as you go along, it's all in the very near future. And it's a future already taking shape in the Nissan you drive today.



Innovation  
that excites

# 2018 370Z<sup>®</sup> Coupe and Roadster

### SEE Z<sup>®</sup> COME TO LIFE

Go to [NissanUSA.com](http://NissanUSA.com) and find an interactive brochure for 370Z and every Nissan in the lineup. Available on desktop or smartphone, it's the full product story - including demos, videos, and complete info on trims, colors, and accessories.

Or download the Interactive Brochure Hub app on your tablet. **Free on the App Store<sup>®</sup> and Google Play.<sup>™</sup>**



### NISSAN ROADSIDE ASSISTANCE

Your peace of mind is on us. For 36 months or 36,000 miles, whichever comes first, your new Nissan is covered for the following:<sup>1</sup>

- Flat-tire changes
- Trip Interruption benefits
- Jump starts
- Vehicle lockouts
- Emergency fuel delivery



Innovation  
that excites

Follow Nissan on:



visit [NissanUSA.com/z](http://NissanUSA.com/z)

<sup>1</sup>Roadside Assistance and Trip Interruption available during the first 36 months or 36,000 miles (whichever occurs first) after initial new vehicle delivery. Restrictions apply. See Owner's Manual for details. The App Store<sup>®</sup> logo is a registered trademark of Apple, Inc. All rights reserved. Facebook<sup>®</sup> is a registered trademark of Facebook, Inc. Google Play<sup>™</sup> is a trademark of Google, Inc. Twitter<sup>®</sup> is a registered trademark of Twitter, Inc. YouTube<sup>®</sup> is a registered trademark of Google Inc.

PRINTED IN POLAND

**EXHILARATE** every moment. From the battle cry of a legendary 332-hp VQ V6 to the world's-first rev-matching manual transmission.<sup>1</sup> The relentless cornering grip of a dynamically balanced chassis talking to you through a driver-focused cockpit. Savor the feeling that only the legendary Z<sup>®</sup> can bring to **YOUR DRIVE.**



Nissan 370Z<sup>®</sup> Sport Coupe shown in Passion Red.

<sup>1</sup>Available feature. RAYS<sup>®</sup> is a registered trademark of RAYS Engineering.

**3.7**  
LITER  
**V6**  
**332**  
HP  
**270**  
LB-FT  
**TORQUE**



**THE 2018 370Z® HERITAGE EDITION**  
**IT'S NEVER BEEN**  
**GOOD AT BLENDING IN**

Celebrating over 40 years of rewriting the rules of style, performance and value, the 370Z Heritage Edition is inspired by the 1977 280Z with Special Deco Package (ZZZap). It features unique contrasting exterior panels and graphics, and a special interior as vibrant as the Z itself.

**A PERFECT BALANCE OF**  
**CONFIDENCE AND CONTROL**

Designed to conquer corners, the Nissan 370Z starts with a low center of gravity and a short wheelbase for quick response. Bring it all together with an enthusiast's wish list of high-performance componentry, and you'll find pure joy as the 370Z elevates handling science into pure performance art.



**THE DRIVER,**  
**FIRST AND FOREMOST**

Gauges that move with the steering column ensuring a clear view. A driver's seat with special cutaways that give arms and legs room to move. From the moment you get in, you can tell - the Z® interior has been custom-tailored to give you the drive of your life.



**THE DOWNSHIFT,**  
**PERFECTED**

Included on the Coupe Sport models, SynchroRev Match® technology - the first in any production car - blips the throttle to the ideal engine rpm for a supremely smooth downshift. And for 2018, every Z with manual transmission enjoys a new EXEDY® high-performance clutch, for reduced pedal effort and enhanced precision and control.





### 370Z® ROADSTER

## OPEN TO THE POSSIBILITIES

Expanding the definition of “convertible weather.” The 370Z Roadster is designed to let you enjoy top-down driving longer – whether it’s just later in the day, or later in the season.<sup>1</sup> Available heated and cooled seats help keep you comfortable even when there’s a chill in the air. Aerodynamic design helps minimize air buffeting in and around the cabin, for a quieter ride. And when it’s time to put up the top, a double-insulated roof helps keep the cabin warmer on cool days, and reduces interior noise, making this one roadster you’ll want to enjoy year-round.



<sup>1</sup>Do not drive the vehicle with the top partially opened. Always make sure the top is either fully opened or closed before driving. See Owner's Manual for proper use.

**nismo**<sup>®</sup>

What happens when the fanatical engineers at NISMO are let loose on the 370Z<sup>®</sup>? You get 350 horsepower surrounded by a NISMO-tuned suspension and a driver-focused interior, all wrapped in a jaw-dropping NISMO-designed aerodynamic body. Obsessive? Perhaps. Extraordinary? Most definitely.

**350** HP



**Competition-tuned handling. Competition-inspired design.** Serious grip starts with specially tuned springs, shocks, and stabilizer bars designed to satisfy the most demanding enthusiast. Extra braces on the front strut tower bar and special vibration dampers on the front body frame rail and rear subframe are added for impressive overall body rigidity and the feel of a controlled ride. A true work of performance art, the 370Z NISMO Tech entices the eye with its 19" RAYS<sup>®</sup> forged alloy wheels, high downforce body, aggressive front and rear fascia, and rear diffuser.

H-PIPE FREE-FLOW DUAL EXHAUST

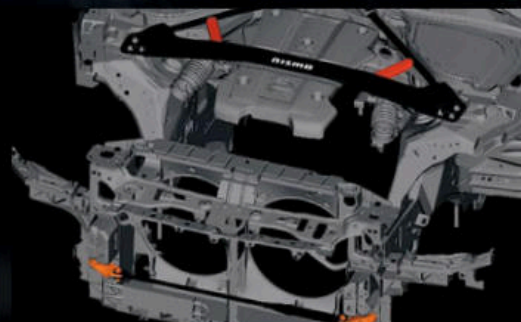
AERODYNAMICS AND DOWNFORCE

CHASSIS ENHANCEMENTS

WHEELS BY RAYS<sup>®</sup> 1

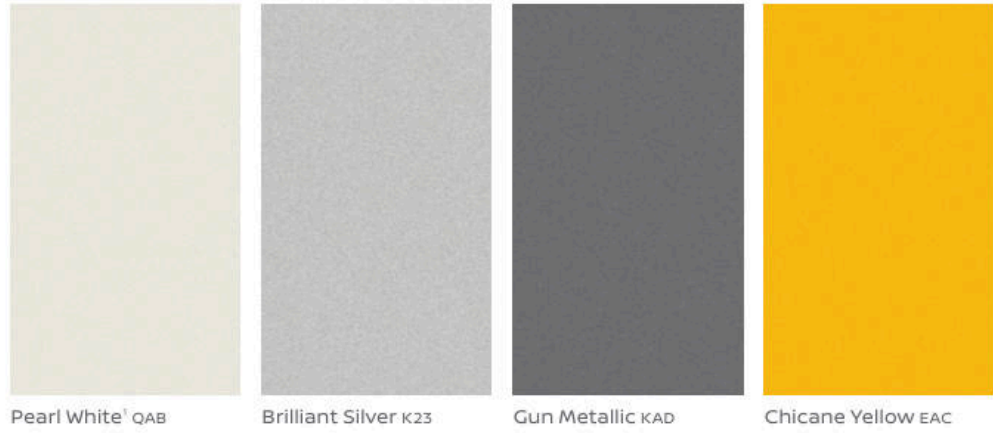
TUNED SUSPENSION AND BRAKES

SIGNATURE INTERIOR



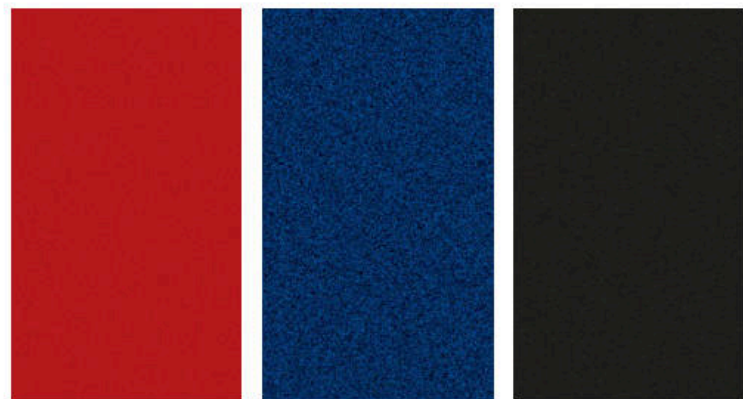
Professional driver. Closed course. Obey all traffic laws, always drive safely and wear your seat belt. Damage resulting from racing, competitive driving, track and/or airstrip use not covered by warranty. See your New Vehicle Limited Warranty and Owner's Manual for proper vehicle operation and complete warranty details. <sup>1</sup>Tires shown are different from actual production vehicle. RAYS<sup>®</sup> is a registered trademark of RAYS Engineering.

CHOOSE YOUR COLOR



Pearl White<sup>1</sup> QAB    Brilliant Silver K23    Gun Metallic KAD    Chicane Yellow EAC

	370Z <sup>1</sup>	SPORT	TOUR	NISMO <sup>4</sup>
BLACK CLOTH	■	■ <sup>2</sup>		
BLACK CLOTH WITH YELLOW TRIM <sup>2</sup>				■ <sup>3</sup>
BLACK LEATHER			■	
BLACK LEATHER/RED ALCANTARA <sup>®</sup> INSERTS <sup>2</sup>				■



Passion Red<sup>1</sup> NBA    Deep Blue Pearl RAY    Magnetic Black G41

	370Z <sup>1</sup>	SPORT	TOUR	NISMO <sup>4</sup>
BLACK CLOTH	■	■ <sup>2</sup>		
BLACK CLOTH WITH YELLOW TRIM <sup>2</sup>				■ <sup>3</sup>
BLACK LEATHER			■	
BLACK LEATHER/RED ALCANTARA <sup>®</sup> INSERTS <sup>2</sup>				■

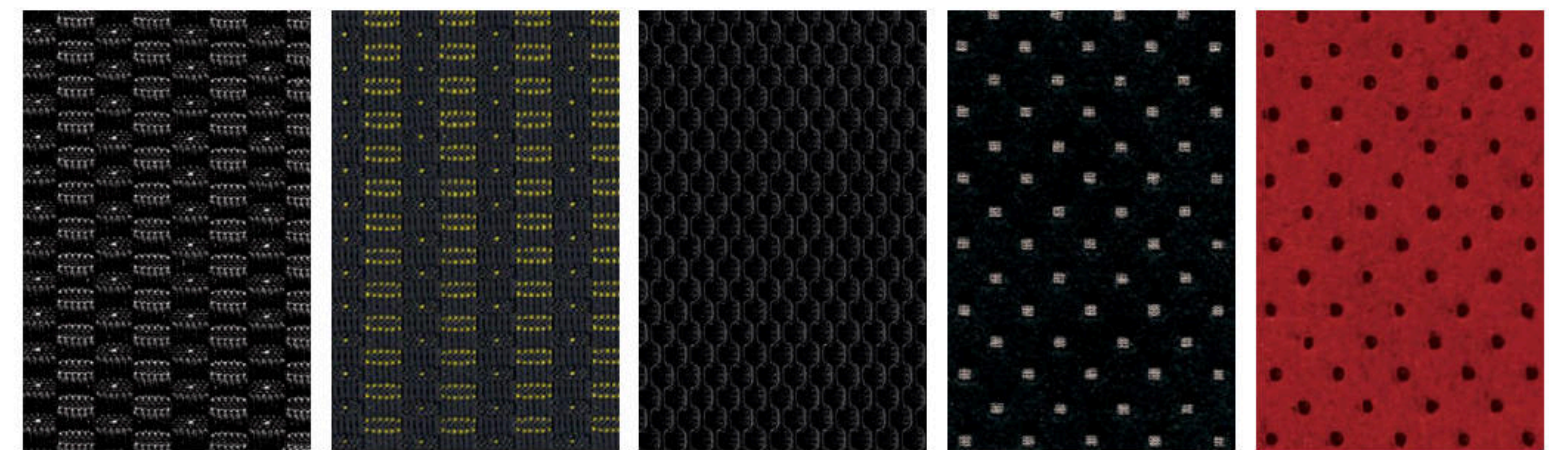
■ Standard  
<sup>1</sup>Extra cost option.  
<sup>2</sup>Coupe only.  
<sup>3</sup>Heritage Edition only.  
<sup>4</sup>Limited availability.

Nissan has taken care to ensure that the color swatches presented here are the closest possible representations of actual vehicle colors. Swatches may vary slightly due to the printing process and whether viewed in daylight, fluorescent or incandescent light. Please see the actual colors at your local Nissan dealer. Alcantara<sup>®</sup> is a registered trademark of Alcantara S.p.A. Corporation.

CHOOSE YOUR INTERIOR



370Z<sup>1</sup> Touring Coupe shown in Black Leather.<sup>4</sup>



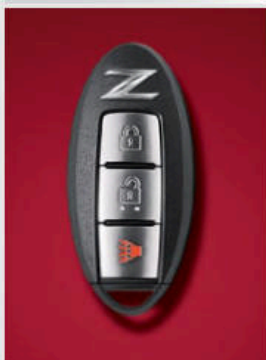
Black Cloth Coupe | Roadster    Black Cloth with Yellow Trim Heritage Edition    Black Leather Roadster    Black Leather Coupe    Black Leather/Red Alcantara<sup>®</sup> Inserts NISMO

## CHOOSE YOUR TRIM LEVEL

### COUPE

#### 370Z<sup>®</sup>

- 332 hp, 270 lb-ft of torque
- 3.7-liter V6, twin-intake system
- 6-speed manual transmission
- Optional 7-speed automatic transmission with manual shift mode and Downshift Rev Matching
- EXEDY<sup>®</sup> high-performance clutch (manual transmission only)
- Ripple-control and sport-tuned shock absorbers
- 3-point front strut tower brace
- 18" Black-finish aluminum-alloy wheels
- Yokohama<sup>®</sup> ADVAN Sport<sup>®</sup> high-performance W-rated tires
- High Intensity Discharge (HID) bi-functional xenon headlights with smoked housing
- LED Daytime Running Lights
- Smoked LED taillights
- Z<sup>®</sup> fender emblems
- Smoked chrome door handles
- Bluetooth<sup>®</sup> Hands-free Phone System<sup>1</sup>
- Nissan Intelligent Key<sup>®</sup> with Push Button Ignition
- Upshift indicator light (manual transmission only)
- Interior trunk release switch
- 8-way adjustable driver's seat
- Driver-shaped bucket seat with thigh support
- 4-way adjustable passenger's bucket seat
- Driver and passenger knee support
- Cloth seat trim
- AM/FM/CD audio system with six speakers
- USB port<sup>2</sup>
- Six standard air bags



#### 370Z HERITAGE EDITION

##### INCLUDES 370Z EQUIPMENT PLUS:

- Heritage Edition exterior graphics
- Gloss black outside mirrors
- Yellow interior trim details
- Cloth seat with contrast yellow trim and bolster stitching
- Leather-wrapped steering wheel and shift knob with yellow trim



#### SPORT

##### INCLUDES 370Z EQUIPMENT PLUS:

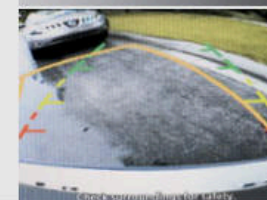
- SynchroRev Match<sup>®</sup> (manual transmission only)
- Paddle shifters (automatic transmission only)
- Nissan sport brakes - 14.0" 4-piston front brakes/13.8" 2-piston rear brakes with red brake calipers
- Viscous Limited-Slip Rear Differential
- 19" RAYS<sup>®</sup> forged alloy wheels
- Bridgestone<sup>®</sup> Potenza<sup>®</sup> S007 high-performance Y-rated tires
- LED illuminated Z side marker emblems
- Front chin aero deflector
- Body-color rear spoiler
- Bose<sup>®</sup> Premium Audio System with eight speakers, including two subwoofers
- Active Noise Cancellation
- Active Sound Enhancement



#### SPORT TECH

##### INCLUDES 370Z SPORT EQUIPMENT PLUS:

- Nissan Hard Drive Navigation System with touch-screen monitor and Voice Recognition<sup>3</sup>
- NavTraffic<sup>®</sup> and NavWeather<sup>®</sup> provided by SiriusXM<sup>4</sup>
- RearView Monitor<sup>5</sup>
- HomeLink<sup>®</sup> Universal Transceiver
- Auto-dimming rearview mirror
- Bluetooth<sup>®</sup> streaming audio<sup>1</sup>
- SiriusXM<sup>®</sup> Satellite Radio<sup>4</sup>



#### TOURING

##### INCLUDES 370Z EQUIPMENT PLUS:

- Paddle shifters (automatic transmission only)
- LED illuminated Z side marker emblems
- Nissan Hard Drive Navigation System with touch-screen monitor and Voice Recognition<sup>3</sup>
- NavTraffic<sup>®</sup> and NavWeather<sup>®</sup> provided by SiriusXM<sup>4</sup>
- RearView Monitor<sup>5</sup>
- HomeLink<sup>®</sup> Universal Transceiver
- Auto-dimming rearview mirror
- Driver's manual adjustable lumbar support
- Leather-appointed, power heated sport seats with synthetic suede inserts
- Aluminum-trimmed pedals
- Bose<sup>®</sup> Premium Audio System with eight speakers, including two subwoofers
- Bluetooth<sup>®</sup> streaming audio<sup>1</sup>
- Active Noise Cancellation
- Active Sound Enhancement
- SiriusXM<sup>®</sup> Satellite Radio<sup>4</sup>



<sup>1</sup>Availability of specific features is dependent upon the phone's Bluetooth<sup>®</sup> support. Please refer to your phone Owner's Manual for details. Bluetooth<sup>®</sup> word mark and logos are owned by Bluetooth SIG, Inc., and any use of such marks by Nissan is under license. See [NissanUSA.com/bluetooth](http://NissanUSA.com/bluetooth) for details. <sup>2</sup>Driving is serious business and requires your full attention. If you have to use the connected device while driving, exercise extreme caution at all times so full attention may be given to vehicle operation. <sup>3</sup>Never program while driving. GPS mapping may not be detailed in all areas or reflect current road status. <sup>4</sup>Required monthly subscriptions sold separately for each available SiriusXM feature after trial period, and are continuous until you call SiriusXM to cancel. Installation costs, one-time activation fee, other fees and taxes will apply. Each SiriusXM feature availability is dependent upon vehicle model, trim level, packaging, and/or options, and may only be available in select markets. Satellite Radio U.S. service, NavWeather<sup>®</sup> service, and SiriusXM Travel Link<sup>®</sup> services (if any of the foregoing features are equipped on vehicle) available only to those 18 or older in the 48 contiguous states and D.C. Fees and

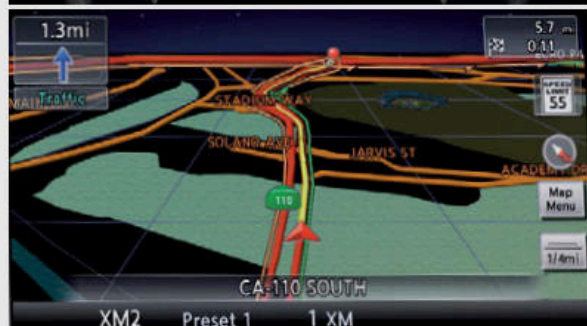
programming subject to change. Subscriptions governed by Customer Agreement available at [siriusxm.com](http://siriusxm.com). ©2017 Sirius XM Radio Inc. Sirius, XM<sup>®</sup> and all related marks and logos are trademarks of Sirius XM Radio Inc. <sup>5</sup>Parking aid/convenience feature. Cannot completely eliminate blind spots. May not detect every object and does not warn of moving objects. Always check surroundings and turn to look behind you before moving vehicle. Bose<sup>®</sup> is a registered trademark of The Bose Corporation. Bridgestone<sup>®</sup> and Potenza<sup>®</sup> are registered trademarks of Bridgestone Corporation. EXEDY<sup>®</sup> is a registered trademark of Kabushiki Kaishi Exedy Corporation. HomeLink<sup>®</sup> is a registered trademark of Gentex Corporation. RAYS<sup>®</sup> is a registered trademark of RAYS Engineering. Yokohama<sup>®</sup> and ADVAN Sport<sup>®</sup> are registered trademarks of The Yokohama Tire Corporation.

## CHOOSE YOUR TRIM LEVEL

### NISMO\*

#### NISMO TECH INCLUDES 370Z\* EQUIPMENT PLUS:

- 350 hp, 276 lb-ft of torque, 3.7-liter V6
- NISMO-tuned free-flow dual exhaust with H-pipe configuration
- 6-speed manual transmission with SynchroRev Match<sup>1</sup>
- Black Magnesium paddle shifters (automatic transmission only)
- Viscous Limited-Slip Rear Differential
- Nissan sport brakes – 14.0" 4-piston front brakes/13.8" 2-piston rear brakes with red brake calipers
- High-rigidity brake hoses and R35 Special II brake fluid
- NISMO-tuned suspension with increased spring, dampening, and stabilizer rates
- NISMO-reinforced 3-point front strut tower brace
- NISMO front and rear performance body dampers
- 19" NISMO forged alloy wheels by RAYS<sup>2</sup>
- Dunlop<sup>3</sup> SP Sport Maxx<sup>4</sup> GT600 high-performance Y-rated tires<sup>5</sup>
- NISMO aerodynamic body design – front and rear fascia, spoiler side sills, and rear spoiler
- Nissan Hard Drive Navigation System with touch-screen monitor and Voice Recognition<sup>2</sup>
- NavTraffic<sup>6</sup> and NavWeather<sup>6</sup> provided by SiriusXM<sup>7,8</sup>
- RearView Monitor<sup>9</sup>
- HomeLink<sup>10</sup> Universal Transceiver
- Auto-dimming rearview mirror
- NISMO tachometer
- NISMO Recaro<sup>11</sup> leather-appointed seats with Alcantara<sup>12</sup> inserts
- NISMO Alcantara<sup>12</sup>/leather-wrapped steering wheel and smooth leather-wrapped shift knob
- NISMO signature red interior stitching
- Bose<sup>13</sup> Premium Audio System with eight speakers, including two subwoofers
- Bluetooth<sup>14</sup> streaming audio<sup>5</sup>
- SiriusXM<sup>7</sup> Satellite Radio<sup>1</sup>
- Active Noise Cancellation
- Active Sound Enhancement



### ROADSTER

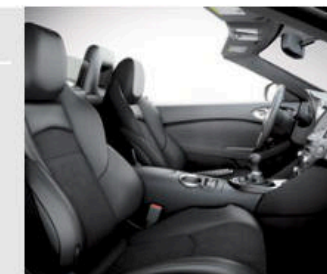
#### 370Z

- 332 hp, 270 lb-ft of torque
- 3.7-liter V6, twin-intake system
- 7-speed automatic transmission with manual shift mode and Downshift Rev Matching
- Paddle shifters
- Ripple-control and sport-tuned shock absorbers
- 3-point front strut tower brace
- 18" Black-finish aluminum-alloy wheels
- Bridgestone<sup>15</sup> Potenza<sup>16</sup> RE050A high-performance W-rated tires
- High Intensity Discharge (HID) bi-functional xenon headlights with smoked housing
- LED Daytime Running Lights
- Smoked LED taillights
- LED illuminated Z<sup>17</sup> side marker emblems
- Smoked chrome door handles
- Power convertible soft-top with glass window
- Rear glass window deflector
- Power moving tonneau cover
- Bluetooth<sup>14</sup> Hands-free Phone System<sup>5</sup>
- Nissan Intelligent Key<sup>18</sup> with Push Button Ignition
- 8-way adjustable driver's seat
- Driver-shaped bucket seat with thigh support
- 4-way adjustable passenger's bucket seat
- Driver and passenger knee support
- Cloth seat trim
- AM/FM/CD audio system with six speakers
- USB port<sup>19</sup>
- Six standard air bags



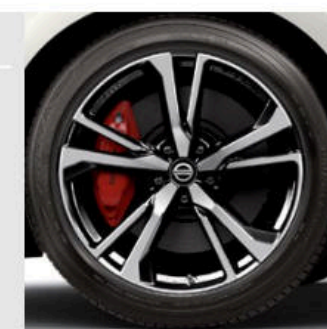
#### TOURING INCLUDES 370Z ROADSTER EQUIPMENT PLUS:

- Nissan Hard Drive Navigation System with touch-screen monitor and Voice Recognition<sup>2</sup>
- NavTraffic<sup>6</sup> and NavWeather<sup>6</sup> provided by SiriusXM<sup>7,8</sup>
- RearView Monitor<sup>9</sup>
- HomeLink<sup>10</sup> Universal Transceiver
- Auto-dimming rearview mirror
- Driver's manual adjustable lumbar support
- Ventilated, leather-appointed seats
- Climate-controlled seats (heated and cooled)
- Aluminum-trimmed pedals
- Bose<sup>13</sup> Premium Audio System with eight speakers, including two subwoofers
- Bluetooth<sup>14</sup> streaming audio<sup>5</sup>
- SiriusXM<sup>7</sup> Satellite Radio<sup>1</sup>



#### TOURING SPORT INCLUDES 370Z TOURING EQUIPMENT PLUS:

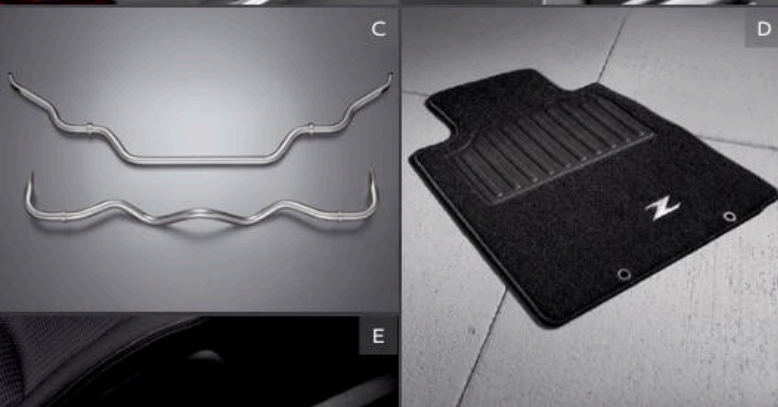
- Viscous Limited-slip Rear Differential
- Nissan sport brakes – 14.0" 4-piston front brakes/13.8" 2-piston rear brakes with red brake calipers
- 19" RAYS<sup>2</sup> forged alloy wheels
- Bridgestone<sup>15</sup> Potenza<sup>16</sup> S007 high-performance Y-rated tires



<sup>1</sup>Tire shown is different from actual production vehicle. <sup>2</sup>Never program while driving. GPS mapping may not be detailed in all areas or reflect current road status. <sup>3</sup>Required monthly subscriptions sold separately for each available SiriusXM feature after trial period, and are continuous until you call SiriusXM to cancel. Installation costs, one-time activation fee, other fees and taxes will apply. Each SiriusXM feature availability is dependent upon vehicle model, trim level, packaging, and/or options, and may only be available in select markets. Satellite Radio U.S. service, NavWeather<sup>6</sup> service, and SiriusXM Travel Link<sup>8</sup> services (if any of the foregoing features are equipped on vehicle) available only to those 18 or older in the 48 contiguous states and D.C. Fees and programming subject to change. Subscriptions governed by Customer Agreement available at [siriusxm.com](http://siriusxm.com). ©2017 Sirius XM Radio Inc. Sirius, XM and all related marks and logos are trademarks of Sirius XM Radio Inc. <sup>4</sup>Parking aid/convenience feature. Cannot completely eliminate blind spots. May not detect every object and does not warn of moving objects. Always check surroundings and turn to look behind you before moving vehicle.

<sup>5</sup>Availability of specific features is dependent upon the phone's Bluetooth<sup>®</sup> support. Please refer to your phone Owner's Manual for details. Bluetooth<sup>®</sup> word mark and logos are owned by Bluetooth SIG, Inc., and any use of such marks by Nissan is under license. See [NissanUSA.com/bluetooth](http://NissanUSA.com/bluetooth) for details. <sup>6</sup>Driving is serious business and requires your full attention. If you have to use the connected device while driving, exercise extreme caution at all times so full attention may be given to vehicle operation. Alcantara<sup>®</sup> is a registered trademark of Alcantara S.p.A. Corporation. Bose<sup>®</sup> is a registered trademark of The Bose Corporation. Bridgestone<sup>®</sup> and Potenza<sup>®</sup> are registered trademarks of Bridgestone Corporation. Dunlop<sup>®</sup> and SP Sport Maxx<sup>®</sup> are registered trademarks of DNA Ltd. Corporation. HomeLink<sup>®</sup> is a registered trademark of Gentex Corporation. RAYS<sup>®</sup> is a registered trademark of RAYS Engineering. Recaro<sup>®</sup> is a registered trademark of Recaro North America Inc.

## CHOOSE YOUR ACCESSORIES



Every Genuine Nissan Accessory is custom-fit, custom-designed and durability-tested. Each one is also backed by Nissan's 3-year/36,000-mile (whichever occurs first) limited warranty (if installed by dealer at the time of purchase).<sup>1</sup> Plus, they can be financed when installed by the dealer at the time of purchase.

- A. Carpeted Trunk Mat**  
Help protect your trunk against wear and tear.
- B. NISMO® Rear Decklid Spoiler**  
To the winner go the spoilers.
- C. NISMO Suspension Stabilizer Kit**  
Quicker turn-in, less body lean, and more fun.
- D. Carpeted Floor Mats**  
Preserve and protect in style.
- E. Illuminated Kick Plates (2-piece set)**  
A grand entry every time you get in.
- F. NISMO Cat-back Exhaust System**  
Rev up your experience with more aggressive sound.
- G. NISMO Spring, Shocks and Struts Kit**  
Take your handling to the next level.
- H. Front Chin Aero Deflector**  
Less turbulence. More downforce. Aggression with purpose.

### ADDITIONAL ACCESSORIES:

- Rear Decklid Spoiler
- Splash Guards
- NISMO Carpeted Floor Mats
- NISMO Brake Pads
- Nissan Valve Stem Caps
- NISMO Carbon Fiber Shift Knob
- And More

## GENUINE NISSAN ACCESSORIES TAKE PART IN PUBLIC DISPLAYS OF AFFECTION

For more information and to shop online for 370Z<sup>®</sup> Genuine Nissan Accessories, go to [bit.ly/18370Z-estore](http://bit.ly/18370Z-estore)



<sup>1</sup>Genuine Nissan Accessories are covered by Nissan's Limited Warranty on Genuine Nissan Replacement Parts, Genuine NISMO® S-Tune Parts, and Genuine Nissan Accessories for the longer of 12 months/12,000 miles (whichever occurs first) or the remaining period under the 3-year/36,000-mile (whichever occurs first) Nissan New Vehicle Limited Warranty. Terms and conditions apply. See Warranty Information Booklet for details.

Nissan 370Z<sup>®</sup> Sport Coupe shown in Brilliant Silver with Front Chin Aero Deflector (standard on Sport and Sport Tech trims), NISMO<sup>®</sup> Rear Decklid Spoiler, and NISMO<sup>®</sup> Graphics Kit.

## SPECIFICATIONS

	370Z <sup>1</sup>	Sport <sup>1</sup>	Sport Tech <sup>1</sup>	Touring	Touring Sport <sup>1</sup>	NISMO <sup>1</sup> Tech <sup>1</sup>
<b>Engine</b>						
3.7-liter DOHC 24-valve V6 engine <sup>2</sup>	■	■	■	■	■	■
Horsepower – 332 hp @ 7,000 rpm	■	■	■	■	■	■
350 hp @ 7,400 rpm						
Torque – 270 lb.-ft. @ 5,200 rpm	■	■	■	■	■	■
276 lb.-ft. @ 5,200 rpm						■
Bore x stroke – 95.5 x 86.0 mm	■	■	■	■	■	■
Compression ratio – 11.1:1	■	■	■	■	■	■
Maximum engine speed – 7,500 rpm	■	■	■	■	■	■
Continuously Variable Valve Timing Control System (CVTCS) with Variable Valve Event and Lift (VVEL) <sup>3</sup> on intake valves	■	■	■	■	■	■
Twin-intake system	■	■	■	■	■	■
Nissan Direct Ignition System with iridium-tipped spark plugs	■	■	■	■	■	■
Electronic drive-by-wire throttle	■	■	■	■	■	■
NISMO-tuned free-flow dual exhaust with H-pipe configuration						■

<b>Drivetrain</b>						
Longitudinally mid-mounted front engine/Rear-Wheel Drive	■	■	■	■	■	■
Carbon-fiber composite driveshaft	■	■	■	■	■	■
6-speed close-ratio manual transmission <sup>1</sup>	■	■	■	■	■	■
SynchroRev Match <sup>4</sup>		■	■		■	■
7-speed automatic transmission with manual shift mode and Downshift Rev Matching	□ <sup>1</sup> ■ <sup>2</sup>	□	□	□ <sup>1</sup> ■ <sup>2</sup>	■	□
Paddle shifters <sup>5</sup>	■ <sup>2</sup>	□	□	□ <sup>1</sup> ■ <sup>2</sup>	■	
Black Magnesium paddle shifters <sup>5</sup>						□
EXEDY <sup>6</sup> high-performance clutch <sup>4</sup>	■ <sup>1</sup>	■	■	■ <sup>1</sup>	■	■
Viscous Limited-Slip Rear Differential		■	■	■	■	■

<b>Brakes</b>						
12.6" x 1.10" vented front discs and 12.6" x 0.63" vented rear discs	■			■		
Nissan sport brakes – 4-piston opposed aluminum calipers with 14.0" x 1.30" vented front discs and 2-piston opposed aluminum calipers with 13.8" x 0.80" vented rear discs		■	■		■	■
High-rigidity brake hoses and R35 Special II brake fluid						■
4-wheel Anti-lock Braking System (ABS)	■	■	■	■	■	■
Electronic Brake force Distribution (EBD)	■	■	■	■	■	■
Brake Assist <sup>8</sup>	■	■	■	■	■	■

<b>Suspension/Chassis Bracing/Steering</b>						
2-link double-wishbone aluminum-alloy front suspension with aluminum subframe	■	■	■	■	■	■
4-link aluminum-alloy rear suspension	■	■	■	■	■	■
Front and rear stabilizer bars	■	■	■	■	■	■
Ripple-control shock absorbers	■	■	■	■	■	■
Sport-tuned shock absorbers	■	■	■	■	■	■
NISMO-tuned suspension with increased spring, dampening, and stabilizer rates						■
3-point front strut tower brace	■	■	■	■	■	■
NISMO reinforced 3-point front strut tower brace						■
Rear underbody V-brace	■	■	■	■	■	■
NISMO front and rear performance body dampers						■

■ Standard □ Optional

H Part of Heritage Edition Package

<b>Wheel/Tires</b>	370Z <sup>1</sup>	Sport <sup>1</sup>	Sport Tech <sup>1</sup>	Touring	Touring Sport <sup>1</sup>	NISMO <sup>1</sup> Tech <sup>1</sup>
18" x 8.0" (front)/18" x 9.0" (rear) black-finish aluminum-alloy wheels	■			■		
19" x 9.0" (front)/19" x 10.0" (rear) forged alloy wheels by RAYS <sup>7</sup>		■	■		■	
19" x 9.5" (front)/19" x 10.5" (rear) NISMO forged alloy wheels by RAYS <sup>7</sup>						■
225/50WR18 (front) and 245/45WR18 (rear) Yokohama <sup>8</sup> ADVAN Sport <sup>9</sup> high-performance tires <sup>1</sup>	■			■		
225/50WR18 (front) and 245/45WR18 (rear) Bridgestone <sup>8</sup> Potenza <sup>9</sup> RE050A high-performance tires <sup>2</sup>	■					
245/40YR19 (front) and 275/35YR19 (rear) Bridgestone <sup>8</sup> Potenza <sup>9</sup> S007 high-performance tires		■	■		■	
245/40YR19 (front) and 285/35YR19 (rear) Dunlop <sup>8</sup> SP Sport Maxx <sup>9</sup> GT600 high-performance tires						■

<b>Exterior Features</b>						
Automatic on/off headlights	■	■	■	■	■	■
High Intensity Discharge (HID) bi-functional xenon headlights with smoked housing	■	■	■	■	■	■
LED Daytime Running Lights	■	■	■	■	■	■
Smoked LED taillights	■	■	■	■	■	■
Z <sup>10</sup> fender emblems	■ <sup>1</sup>					
LED illuminated Z side marker emblems	■ <sup>2</sup>	■	■	■	■	■
Smoked chrome door handles	■	■	■	■	■	■
Front chin aero deflector		■	■			
Body-color rear spoiler		■	■			
NISMO aerodynamic body design – front and rear fascia, spoiler, side sills and rear spoiler						■
Heritage Edition exterior graphics	H					
Aluminum hood, doors and hatch/trunk <sup>2</sup>	■	■	■	■	■	■
Heated outside mirrors	■ <sup>2</sup>	■	■	■	■	■
Gloss black outside mirrors	H					
Power convertible soft-top with glass window <sup>2</sup>	■	■	■	■	■	■
Rear wind deflector and power moving tonneau cover <sup>2</sup>	■			■	■	■

<b>Comfort/Convenience</b>						
Nissan Hard Drive Navigation System with 7.0" VGA touch-screen monitor and voice recognition <sup>2</sup>			■	■	■	■
NavTraffic <sup>3</sup> and NavWeather <sup>3</sup> provided by SiriusXM <sup>4</sup>				■	■	■
RearView Monitor <sup>5</sup>				■	■	■
Automatic Temperature Control (ATC)	■	■	■	■	■	■
Bluetooth <sup>6</sup> Hands-free Phone System <sup>10</sup>	■	■	■	■	■	■
3-bay gauge cluster (oil temperature, voltmeter and digital clock)	■	■	■	■	■	■
Upshift indicator light <sup>4</sup>	■ <sup>1</sup>	■	■	■ <sup>1</sup>		
NISMO tachometer						■
Nissan Intelligent Key <sup>7</sup> with Push Button Ignition	■	■	■	■	■	■
Remote windows down	■	■	■	■	■	■
HomeLink <sup>8</sup> Universal Transceiver			■	■	■	■
Auto-dimming rearview mirror				■	■	■
Interior trunk release switch	■ <sup>1</sup>	■	■	■ <sup>1</sup>		

<b>Comfort/Convenience (continued)</b>	370Z <sup>1</sup>	Sport <sup>1</sup>	Sport Tech <sup>1</sup>	Touring	Touring Sport <sup>1</sup>	NISMO <sup>1</sup> Tech <sup>1</sup>
12-volt DC power outlets (two)	■	■	■	■	■	■
Tilt steering column with integrated gauges	■	■	■	■	■	■
Rear cargo cover				■	■	■

<b>Seating/Appointments</b>						
8-way adjustable driver's seat	■	■	■	■	■	■
Driver-shaped bucket seat with thigh support	■	■	■	■	■	■
Driver's manual adjustable lumbar support				■	■	
4-way adjustable passenger's bucket seat	■	■	■	■	■	■
Power seats				■	■	
Heated seats <sup>1</sup>						■
Climate-controlled seats (heated and cooled) <sup>2</sup>				■	■	
Driver and passenger knee support	■	■	■	■	■	■
Cloth seat trim	■	■	■			
Cloth seats with contrast yellow trim and bolster stitching	H					
Leather-appointed sport seats with synthetic suede inserts <sup>1</sup>						■
Ventilated leather-appointed sport seats <sup>2</sup>				■	■	
NISMO Recaro <sup>3</sup> leather-appointed seats with Alcantara <sup>4</sup> inserts						■
Synthetic suede door panel inserts				■	■	
Leather-wrapped steering wheel and shift knob	■	■	■	■	■	■
Leather-wrapped steering wheel and shift knob with yellow trim	H					
NISMO Alcantara <sup>4</sup> /leather-wrapped steering wheel and smooth leather-wrapped shift knob						■
Aluminum-trimmed pedals						■
Heritage Edition interior trim details	H					
NISMO signature red interior stitching						■

<b>Audio/Entertainment</b>						
AM/FM/CD audio system with six speakers	■					
Bose <sup>5</sup> Premium Audio System with eight speakers, including two subwoofers		■	■	■	■	■
Active Noise Cancellation <sup>1</sup>			■	■	■	■
Active Sound Enhancement <sup>1</sup>			■	■	■	■
DVD video playback capability				■	■	■
Auxiliary audio input jack <sup>11</sup>	■	■	■	■	■	■
Auxiliary audio/video input jacks <sup>11</sup>	■	■	■	■	■	■
USB port <sup>11</sup>	■	■	■	■	■	■
Bluetooth <sup>6</sup> streaming audio				■	■	■
SiriusXM <sup>4</sup> Satellite Radio <sup>6</sup>				■	■	■
Speed-sensitive volume control				■	■	■

<b>Safety/Security</b>						
Nissan Advanced Air Bag System with dual-stage supplemental front air bags with seat belt and occupant classification sensors	■	■	■	■	■	■
Driver and passenger seat-mounted side-impact supplemental air bags	■	■	■	■	■	■
Roof-mounted curtain side-impact supplemental air bags for occupants head protection <sup>1</sup>	■	■	■	■	■	■
Door-mounted curtain side-impact supplemental air bags for occupants head protection <sup>2</sup>	■			■	■	■

<b>Safety/Security (continued)</b>	370Z <sup>1</sup>	Sport <sup>1</sup>	Sport Tech <sup>1</sup>	Touring	Touring Sport <sup>1</sup>	NISMO <sup>1</sup> Tech <sup>1</sup>
Vehicle Dynamic Control (VDC) with Traction Control System (TCS)	■	■	■	■	■	■
Active Head Restraints	■	■	■	■	■	■
Tire Pressure Monitoring System (TPMS) <sup>12</sup>	■	■	■	■	■	■

## CAPACITIES/MPG

<b>Aerodynamics – Cd</b>	
Drag coefficient	.30 on Coupe and NISMO, .29 for Sport trims
	.33 on Roadster, .34 for Sport trim

<b>Capacities</b>	
Interior volume (cu. ft.)	51.6
Cargo volume (cu. ft.)	6.9 (4.2 on Roadster)

<b>2018 EPA Fuel Economy Estimates</b>		
<b>City/Hwy/Combined MPG</b>	<b>Coupe</b>	<b>Roadster</b>
Manual transmission	17/24/20	–
Automatic transmission	18/24/21	18/25/21
<small>Fuel economy based on 2018 EPA fuel economy estimates. EPA data not available at time of publication. Actual mileage may vary with driving conditions – use for comparison only.</small>		

<sup>1</sup>Coupe only. <sup>2</sup>Roadster only. <sup>3</sup>Premium fuel required. <sup>4</sup>Manual transmission only. <sup>5</sup>Automatic transmission only. <sup>6</sup>Brake Assist is only an aid to assist the driver and is not a collision warning or avoidance device. It is the driver's responsibility to be in control of the vehicle at all times. <sup>7</sup>Never program while driving. GPS mapping may not be detailed in all areas or reflect current road status. <sup>8</sup>Required monthly subscriptions sold separately for each available SiriusXM feature after trial period, and are continuous until you call SiriusXM to cancel. Installation costs, one-time activation fee, other fees and taxes will apply. Each SiriusXM feature availability is dependent upon vehicle model, trim level, packaging, and/or options, and may only be available in select markets. Satellite Radio U.S. service, NavWeather<sup>®</sup> service, and SiriusXM Travel Link<sup>®</sup> services (if any of the foregoing features are equipped on vehicle) available only to those 18 or older in the 48 contiguous states and D.C. Fees and programming subject to change. Subscriptions governed by Customer Agreement available at [siriusxm.com](http://siriusxm.com). ©2017 Sirius XM Radio Inc. Sirius, XM<sup>®</sup> and all related marks and logos are trademarks of Sirius XM Radio Inc. <sup>9</sup>Parking aid/convenience feature. Cannot completely eliminate blind spots. May not detect every object and does not warn of moving objects. Always check surroundings and turn to look behind you before moving vehicle. <sup>10</sup>Availability of specific features is dependent upon the phone's Bluetooth<sup>®</sup> support. Please refer to your phone Owner's Manual for details. Bluetooth<sup>®</sup> word mark and logos are owned by Bluetooth SIG, Inc. and any use of such marks by Nissan is under license. See [NissanUSA.com/bluetooth](http://NissanUSA.com/bluetooth) for details. <sup>11</sup>Driving is serious business and requires your full attention. If you have to use the connected device while driving, exercise extreme caution at all times so full attention may be given to vehicle operation. <sup>12</sup>TPMS is not a substitute for regular tire pressure checks. Alcantara<sup>®</sup> is a registered trademark of Alcantara S.p.A. Corporation. Bose<sup>®</sup> is a registered trademark of The Bose Corporation. Bridgestone<sup>®</sup> and Potenza<sup>®</sup> are registered trademarks of Bridgestone Corporation. Dunlop<sup>®</sup> and SP Sport Maxx<sup>®</sup> are registered trademarks of DNA Ltd. Corporation. EXEDY<sup>®</sup> is a registered trademark of Kabushiki Kaishi Exedy Corporation. HomeLink<sup>®</sup> is a registered trademark of Gentex Corporation. RAYS<sup>®</sup> is a registered trademark of RAYS Engineering. Recaro<sup>®</sup> is a registered trademark of Recaro North America Inc. Yokohama<sup>®</sup> and ADVAN Sport<sup>®</sup> are registered trademarks of The Yokohama Tire Corporation. This brochure is intended for general descriptive and informational purposes only. It is subject to change and does not constitute an offer, representation or warranty (express or implied) by Nissan North America, Inc. Interested parties should confirm the accuracy of any information in this brochure as it relates to a vehicle directly with Nissan North America, Inc., before relying on it to make a purchase decision. Nissan North America, Inc., reserves the right to make changes, at any time, without prior notice, in prices, colors, materials, equipment, specifications, and models and to discontinue models or equipment. Due to continuous product development and other pre- and post-production factors, actual vehicle, materials and specifications may vary from this brochure. Some vehicles shown with optional equipment. See the actual vehicle for complete accuracy. Availability and delivery times for particular models or equipment may vary. Specifications, options and accessories may differ in Hawaii, U.S. territories and other countries. For additional information on availability, options or accessories, see your Nissan dealer or contact Nissan North America, Inc. At [NissanUSA.com](http://NissanUSA.com), you'll find virtual product demonstrations, a way to "build your own Nissan," a dealer locator, and more information about key Nissan support services. Or if you'd prefer, call 1-800-NISSAN-3 for answers to specific questions about '18 Z or any other Nissan vehicle. The Nissan names, logos, product names, feature names, and slogans are trademarks owned by or licensed to Nissan Motor Co. Ltd. and/or its North American subsidiaries. Other trademarks and trade names are those of their respective owners. **Always wear your seat belt, and please don't drink and drive.** ©2017 Nissan North America, Inc. '18 Z. 1820897-N-5/17-60K-CGI