

NISSAN INTELLIGENT MOBILITY™

Nissan Intelligent Mobility guides everything we do. We're using new technologies to transform cars from mere driving machines into assistants. Together the journey is more confident, connected, and exciting. Whether it's cars that assist in the driving task, or highways that charge your EV as you go along, it's all in the very near future. And it's a future already taking shape in the Nissan you drive today.



Innovation
that excites

2020
370Z®

SEE Z® COME TO LIFE

Go to NissanUSA.com and find an interactive brochure for 370Z and every Nissan model in the lineup. Available on desktop, smartphone, or tablet, it's the full product story – including demos, videos, and complete info on trims, colors, and accessories.



¹Available feature. ²Limited availability. ³Professional driver. Closed course. Obey all traffic laws, always drive safely and wear your seat belt. Damage resulting from racing, competitive driving, track and/or airstrip use not covered by warranty. See your New Vehicle Limited Warranty and Owner's Manual for proper vehicle operation and complete warranty details. ⁴Tires are different from actual production vehicle. ⁵Extra cost option. ⁶RearView Monitor may not detect every object and does not eliminate blind spots or warn of moving objects. See Owner's Manual for safety information. ⁷Feature availability is dependent on vehicle model, trim level, packaging and options. Compatible connected device may be required and feature availability may be dependent on device's capability. Refer to connected device's owner's manual for details. Late availability for some features. **Driving is serious business and requires your full attention.** Only use features and connected devices when safe and legal to do so. Some features, including automatic crash notification and SOS, are dependent upon the telematics device being in operative condition, its ability to connect to a wireless network, compatible wireless network availability, navigation map data and GPS satellite signal receptions, the absence of which can limit or prevent the ability to reach Customer Care or receive support. GPS mapping may not be detailed in all areas or reflect current road status. Never program GPS while driving. Only use Remote Engine Start and Remote Horn features in accordance with any laws, rules or ordinances in effect in your vehicle's location. Some services and features are provided by independent companies not within Nissan's control. **Should service provider terminate or restrict service or features, service or features may be suspended or terminated without notice or with no liability to Nissan or its partners or agents.** Services and features may require compatible cellular network provided by independent companies not within Nissan or its partners' or agents' control. Cellular network signal strength may vary and may not be available in all areas or at all times. Services and features may not function if cellular network is unavailable, restricted, or terminated. Nissan and its partners or agents are not responsible for associated costs or other third party charges that may be required for continued operation due to cellular network unavailability, restriction, or termination (including equipment replacements/upgrades, if available, or roaming charges on alternative networks). Technology is evolving, and changes by independent companies are not within Nissan's or its partners' or agents' control. Enrollment, owner consent, personal identification number (PIN), and subscription agreement may be required to receive full suite of features and services. Trial periods (if applicable) begin on the date of vehicle purchase or lease of a new Nissan. Trial periods may be subject to change at any time and may be subject to early termination without notice. Required subscriptions may be sold separately for each available feature or service after trial period ends, and may continue until you call service provider to cancel. Installation costs, one-time activation fee, other fees and taxes may apply. Fees and programming subject to change. Feature may be subject to age restrictions in some areas. Subscriptions governed by service provider's subscription agreement, terms and conditions and privacy statements available at service provider's website. Text rates or data usage may apply. The Nissan names, logos and slogans are trademarks owned by or licensed to Nissan Motor Co. Ltd. or its North American subsidiaries. Other trademarks and trade names are those of their respective owners. For important safety information, system limitations, and additional operating and feature information, see dealer, Owner's Manual, or NissanUSA.com/connect/important-information. Terms and conditions of Subscriber Agreement apply. NissanConnect EV features are provided by Nissan North America. Sirius XM Connected Vehicle Services Inc. ("Sirius XM") partners with Nissan North America to provide NissanConnect Services powered by SiriusXM. All stated terms, disclosures and limitations of liability associated with connected vehicle services extend to Sirius XM and its affiliate, Sirius XM Radio Inc. SiriusXM is a registered trademark of Sirius XM Radio Inc. ⁸Driving is serious business and requires your full attention. If you have to use the connected device while driving, exercise extreme caution at all times so full attention may be given to vehicle operation. ⁹Air bags are only a supplemental restraint system. Always wear your seat belt. Rear-facing child restraints should not be placed in the front-passenger's seat. All children 12 and under should ride in the rear seat properly secured in child restraints, booster seats, or seat belts according to their size. Air bags will only inflate in certain accidents. See Owner's Manual for safety information. ¹⁰Never program while driving. GPS mapping may not be detailed in all areas or reflect current road status. ¹¹Genuine Nissan Accessories are covered by Nissan's Limited Warranty on Genuine Nissan Replacement Parts, Genuine NISMO® 5-Tune Parts, and Genuine Nissan Accessories for the longer of 12 months/12,000 miles (whichever occurs first) or the remaining period under the 3-year/36,000-mile (whichever occurs first) Nissan New Vehicle Limited Warranty. Terms and conditions apply. See dealer, Warranty Information Booklet, or parts.NissanUSA.com for details. ¹²Premium fuel required. ¹³Manual transmission only. ¹⁴Automatic transmission only. ¹⁵Vehicle Dynamic Control cannot prevent collisions due to abrupt steering, carelessness, or dangerous driving techniques. It should remain on when driving, except when freeing the vehicle from mud or snow. See Owner's Manual for safety information. ¹⁶Tire Pressure Monitoring System is not a substitute for regular tire pressure checks. See Owner's Manual for safety information. ¹⁷For a period of 36 months/36,000 miles from the date the vehicle is delivered to the first retail buyer or otherwise put into use, whichever is earlier. Alcantara® is a registered trademark of Alcantara S.p.A. Corporation. Bluetooth® is a registered trademark of Bluetooth SIG, Inc. Bose® is a registered trademark of The Bose Corporation. Bridgestone® and Potenza® are registered trademarks of Bridgestone Corporation. Dunlop® is a registered trademark of DNA Ltd. Corporation. EXEDY® is a registered trademark of EXEDY Corporation. Facebook® is a registered trademark of Facebook, Inc. HomeLink® is a registered trademark of Genex Corporation. RAYS® is a registered trademark of RAYS Engineering. Recaro® is a registered trademark of Recaro North America Inc. The Sirius®, XM®, and SiriusXM® names and all related marks and logos are trademarks of Sirius XM Radio Inc. All other trademarks are the property of their respective owners. SP Sport MAXX® is a registered trademark of SRI USA, Inc. Twitter® is a registered trademark of Twitter, Inc. Yokohama® and ADVAN Sport® are registered trademarks of The Yokohama Tire Corporation. YouTube® is a registered trademark of Google LLC. This brochure is intended for general descriptive and informational purposes only. It is subject to change and does not constitute an offer, representation or warranty (express or implied) by Nissan North America, Inc. Interested parties should confirm the accuracy of any information in this brochure as it relates to a vehicle directly with Nissan North America, Inc., before relying on it to make a purchase decision. Nissan North America, Inc., reserves the right to make changes, at any time, without prior notice, in prices, colors, materials, equipment, specifications, and models and to discontinue models or equipment. Due to continuous product development and other pre- and post-production factors, actual vehicle, materials and specifications may vary from this brochure. Some vehicles shown with optional equipment. See the actual vehicle for complete accuracy. Availability and delivery times for particular models or equipment may vary. Specifications, options and accessories may differ in Hawaii, U.S. territories and other countries. For additional information on availability, options or accessories, see your Nissan dealer or contact Nissan North America, Inc. At NissanUSA.com, you'll find virtual product demonstrations, a way to "build your own Nissan," a dealer locator, and more information about key Nissan support services. Or if you'd prefer, call 1-800-NISSAN-3 for answers to specific questions about 20 Z® or any other Nissan vehicle. The Nissan names, logos, product names, feature names, and slogans are trademarks owned by or licensed to Nissan Motor Co. Ltd. and/or its North American subsidiaries. Other trademarks and trade names are those of their respective owners. **Always wear your seat belt, and please drive responsibly.** ©2019 Nissan North America, Inc. 20 Z. 2022572-N-2/19-60K-CGI

Every drive is something special. The battle cry of a legendary 332-hp VQ V6 paired with the world's first rev-matching manual transmission.¹ The relentless cornering grip of a dynamically balanced chassis talking to you through a driver-focused cockpit. The 2020 Nissan 370Z.[®] This is tech that moves you.



3.7
LITER
V6

332
HP

270
LB-FT
TORQUE



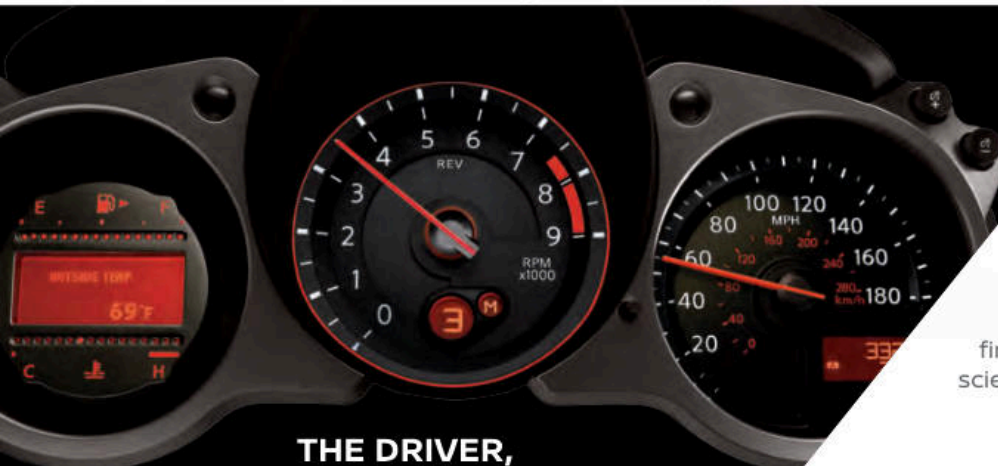
370Z
50th Anniversary

2020 370Z® 50TH ANNIVERSARY EDITION®
DRIVING A Z® DOESN'T JUST SAY SOMETHING, IT SAYS EVERYTHING

The 50th Anniversary Edition makes the ultimate statement with a unique two-tone exterior, body graphics, and badging. Inside, bespoke 50th Anniversary Edition leather-trimmed seats, Alcantara®-trimmed steering wheel, tachometer graphics, special commemorative badging, and available 50th Anniversary floor mats are worthy of a true icon.



YEARS



**THE DRIVER,
FIRST AND FOREMOST**

Gauges that move with the steering column, ensuring a clear view. A driver's seat with special cutaways that give arms and legs room to move. From the moment you get in, you can tell – the Z® interior has been custom-tailored to give you the drive of your life.

**A PERFECT BALANCE OF
CONFIDENCE AND CONTROL**

Designed to conquer corners, the Nissan 370Z starts with a low center of gravity and a short wheelbase for quick response. Bring it all together with an enthusiast's wish list of high-performance componentry, and you'll find pure joy as the 370Z elevates handling science into pure performance art.



nismo[®]

What happens when the inspired engineers at NISMO are let loose on the 370Z[®]? You get 350 horsepower surrounded by a NISMO-tuned suspension and a driver-focused interior, all wrapped in a jaw-dropping NISMO-designed aerodynamic body. Obsessive? Perhaps. Extraordinary? Most definitely.

350 HP



Competition-tuned handling. Competition-inspired design. Serious grip starts with specially tuned springs, shocks, and stabilizer bars designed to satisfy the most demanding enthusiast. Extra braces on the front strut tower bar and special vibration dampers on the front body frame rail and rear subframe are added for impressive overall body rigidity and the feel of a controlled ride. A true work of performance art, the 370Z NISMO entices the eye with its 19" RAYS[®] forged alloy wheels, high downforce body, aggressive front and rear fascia, and rear diffuser.³

H-PIPE FREE-FLOW DUAL EXHAUST

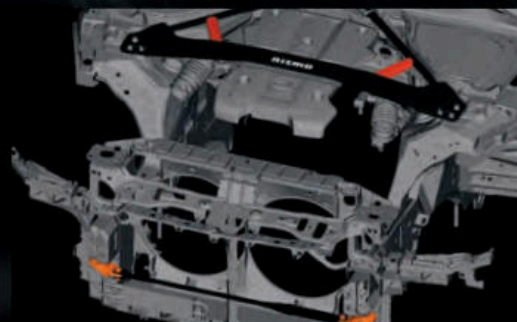
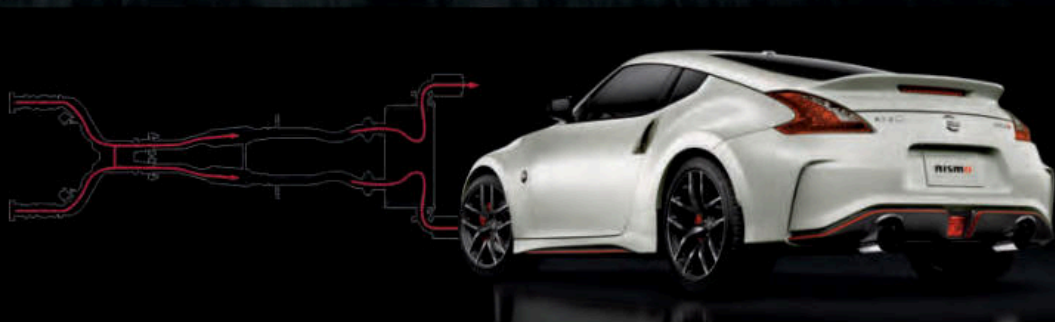
AERODYNAMICS AND DOWNFORCE

CHASSIS ENHANCEMENTS

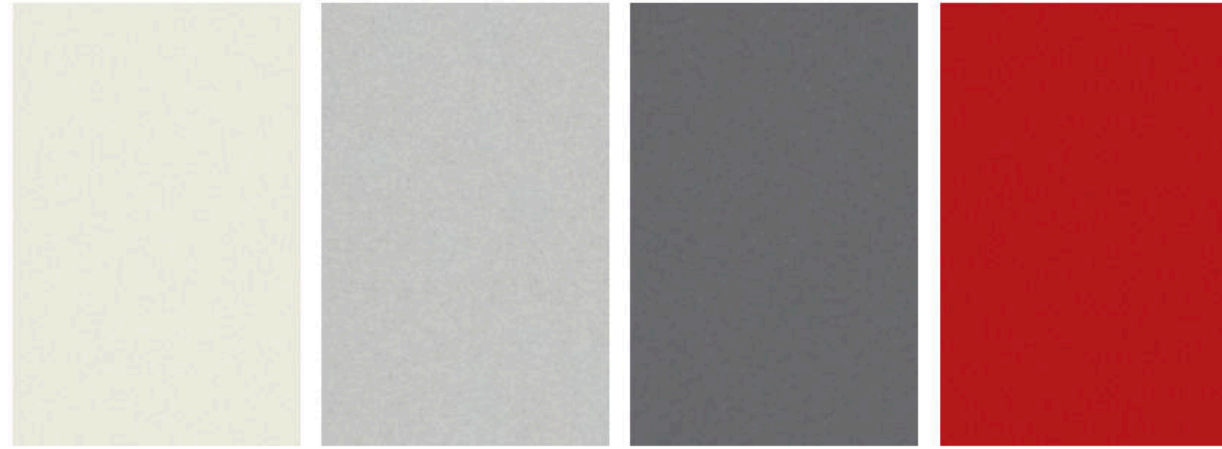
WHEELS BY RAYS^{®4}

TUNED SUSPENSION AND BRAKES

SIGNATURE INTERIOR



CHOOSE YOUR COLOR



Pearl White TriCoat[®] Brilliant Silver Metallic Gun Metallic Passion Red TriCoat[®]

| | SPORT | | | |
|--|-------------------|-------|------|-------------------------|
| | 370Z [®] | SPORT | TOUR | 50TH NISMO [®] |
| BLACK CLOTH | ■ | ■ | | |
| BLACK LEATHER | | | ■ | |
| 50TH ANNIVERSARY LEATHER | | | | |
| BLACK LEATHER/RED ALCANTARA [®] INSERTS | | | | ■ |



Deep Blue Pearl Magnetic Black Pearl Two-tone Pearl White TriCoat / Solid Red Two-tone Brilliant Silver Metallic / Magnetic Black Pearl

| | SPORT | | | |
|--|-------------------|-------|------|-------------------------|
| | 370Z [®] | SPORT | TOUR | 50TH NISMO [®] |
| BLACK CLOTH | ■ | ■ | | |
| BLACK LEATHER | | ■ | ■ | |
| 50TH ANNIVERSARY LEATHER | | | | |
| BLACK LEATHER/RED ALCANTARA [®] INSERTS | | | | ■ |

■ Standard

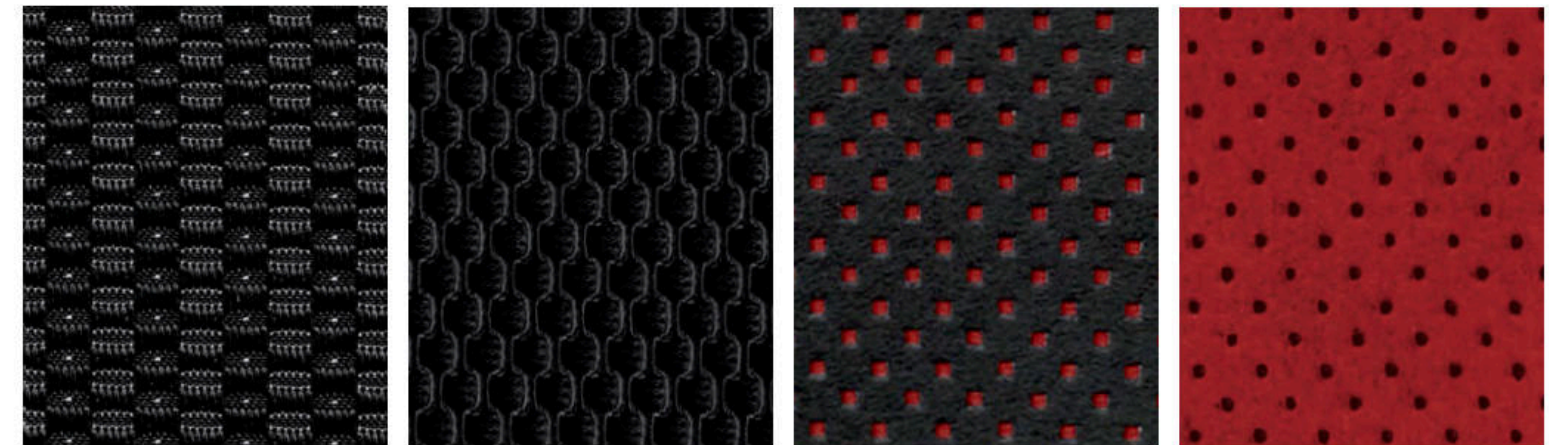
Nissan has taken care to ensure that the color swatches presented here are the closest possible representations of actual vehicle colors. Swatches may vary slightly due to the printing process and whether viewed in daylight, fluorescent or incandescent light. Please see the actual colors at your dealer.

CHOOSE YOUR INTERIOR



Nissan 370Z[®] Sport Touring shown in Black Leather.

2019 model shown.



Black Cloth Black Leather 50th Anniversary Leather 50TH ANNIVERSARY EDITION Black Leather/Red Alcantara[®] Inserts NISMO

CHOOSE YOUR TRIM LEVEL

370Z*

- 3.7-liter V6, twin-intake system with 332 hp and 270 lb-ft torque
- 6-speed manual transmission
- Available 7-speed automatic transmission with manual shift mode and Downshift Rev Matching
- EXEDY® high-performance clutch (manual transmission only)
- Sport-tuned shock absorbers
- 3-point front strut tower brace
- Rear underbody V-brace
- 18" Black-finish aluminum-alloy wheels
- Yokohama® ADVAN Sport® high-performance tires
- High Intensity Discharge (HID) bi-functional xenon headlights
- LED Daytime Running Lights
- LED taillights
- Z® fender emblems
- One-touch hatch release
- Nissan Intelligent Key® with Push Button Ignition
- Auto-dimming rearview mirror
- RearView Monitor®
- 8-way adjustable driver's seat
- 4-way adjustable passenger's seat
- Driver and passenger knee support
- Cloth seat trim
- Upshift indicator light (manual transmission only)
- AM/FM/CD audio system with six speakers
- Bluetooth® Hands-free Phone System⁷
- USB port⁸
- Six standard air bags⁹



SPORT INCLUDES 370Z EQUIPMENT PLUS:

- 6-speed manual transmission with SynchroRev Match®
- Viscous Limited-Slip Differential
- Nissan sport brakes with 4-piston front, 2-piston rear aluminum calipers and 14.0" front, 13.8" rear vented discs
- 19" Forged alloy wheels by RAYS®
- Bridgestone® Potenza® S007 high-performance tires
- Front chin aero deflector
- Rear spoiler
- LED illuminated Z side marker emblems
- Bose® Premium Audio System with eight speakers, including dual subwoofers
- Active Noise Cancellation
- Active Sound Enhancement



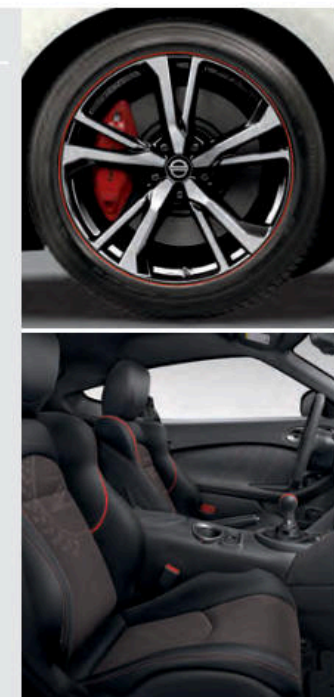
SPORT TOURING INCLUDES SPORT EQUIPMENT PLUS:

- 7-speed automatic transmission with manual shift mode and Downshift Rev Matching
- Magnesium paddle shifters
- 7" touch-screen display
- Nissan Hard Drive Navigation System¹⁰
- Nissan Voice Recognition for audio and navigation¹⁰
- SiriusXM® Traffic and Weather with 3-month complimentary trial access⁷
- HomeLink® Universal Transceiver
- Rear cargo cover
- 4-way power, 4-way manual adjustable driver's seat
- 4-way power adjustable passenger's seat
- Driver's manual adjustable lumbar support
- Leather-appointed, heated sport seats with synthetic suede inserts
- Aluminum-trimmed pedals
- Bluetooth® streaming audio⁷
- SiriusXM® Radio with 3-month complimentary trial access⁷



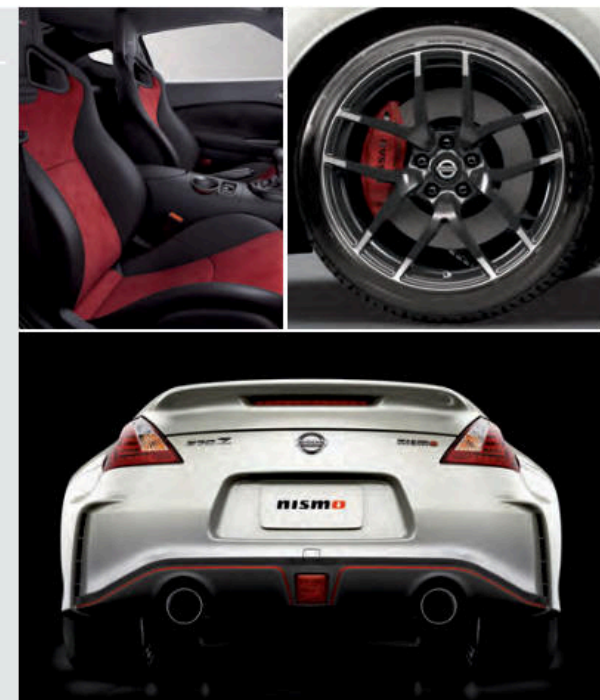
50TH ANNIVERSARY INCLUDES SPORT EQUIPMENT PLUS:

- 6-speed manual transmission with SynchroRev Match®
- Available 7-speed automatic transmission with manual shift mode and Downshift Rev Matching
- Magnesium paddle shifters (automatic transmission only)
- 19" 50th Anniversary Edition forged alloy wheels by RAYS®
- 50th Anniversary Edition side marker decal
- 50th Anniversary Edition unique exterior graphics
- 50th Anniversary Edition exterior badging
- 4-way power, 4-way manual adjustable driver's seat
- 4-way power adjustable passenger's seat
- 50th Anniversary Edition leather-appointed seats with synthetic suede inserts
- 50th Anniversary Edition Alcantara®/leather-wrapped steering wheel
- 50th Anniversary Edition interior badging
- 50th Anniversary Edition tachometer badge
- 50th Anniversary Edition leather-wrapped shift knob
- 50th Anniversary Edition unique interior stitching
- Deletes front chin aero deflector and rear spoiler



NISMO INCLUDES SPORT TOURING EQUIPMENT PLUS:

- 3.7-liter V6 with 350 hp and 276 lb-ft torque
- NISMO-tuned dual exhaust with H-pipe configuration
- 6-speed manual transmission with SynchroRev Match®
- Available 7-speed automatic transmission with manual shift mode and Downshift Rev Matching
- Magnesium paddle shifters (automatic transmission only)
- High-rigidity brake hoses and R35 Special II brake fluid
- NISMO-tuned suspension with increased spring and dampening rates and larger stabilizer bars
- NISMO-reinforced 3-point front strut tower brace
- NISMO front and rear performance chassis dampers
- 19" NISMO forged alloy wheels by RAYS®
- Dunlop® SP Sport MAXX® GT600 high-performance tires⁴
- NISMO aerodynamic body design – unique front and rear fascia, side sills, and rear spoiler
- NISMO tachometer
- NISMO Recaro® leather-appointed seats with Alcantara® inserts
- NISMO Alcantara®/leather-wrapped steering wheel and smooth leather-wrapped shift knob
- NISMO signature red interior stitching
- Deletes 4-way power, 4-way manual adjustable driver's seat, 4-way power adjustable passenger's seat, driver's manual adjustable lumbar support, heated seats and active head restraints



CHOOSE YOUR ACCESSORIES



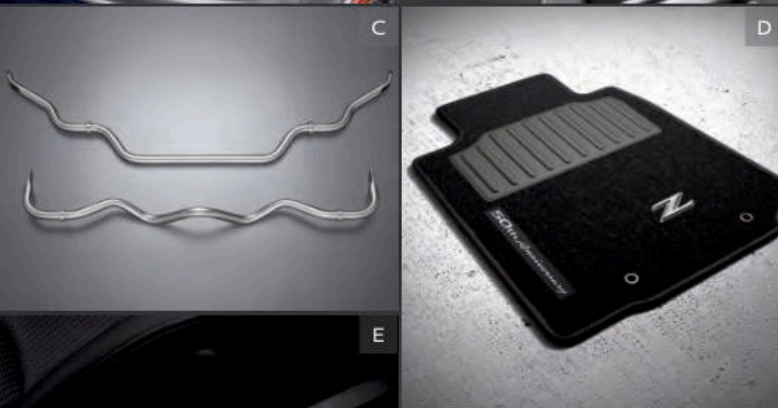
Every Genuine Nissan Accessory is custom-fit, custom-designed and durability-tested. Each one is backed by Nissan's 3-year/36,000-mile (whichever occurs first) limited warranty (if installed by dealer at the time of purchase), and can be financed when installed by dealer at time of purchase.¹¹

A. Carpeted Trunk Mat

Help protect your trunk against wear and tear.

B. NISMO® Rear Decklid Spoiler

To the winner go the spoilers.

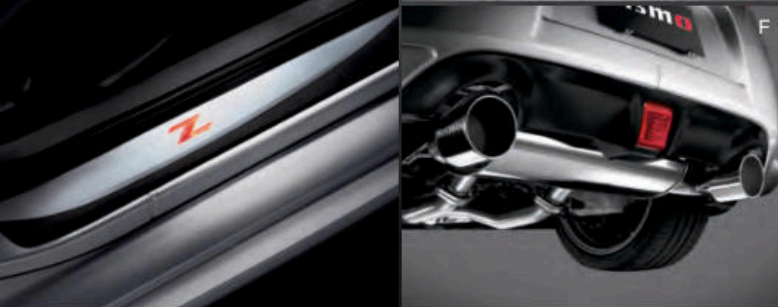


C. NISMO Suspension Stabilizer Kit

Quicker turn-in, less body lean, and more fun.

D. 50th Anniversary Edition Carpeted Floor Mats

The perfect finishing touch.



E. Illuminated Kick Plates (2-piece set)

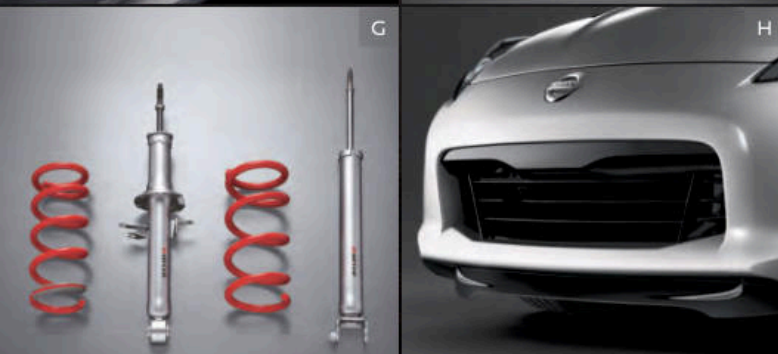
A grand entry every time you get in.

F. NISMO Cat-back Exhaust System

Rev up your experience with more aggressive sound.

G. NISMO Suspension Struts and Springs Kit

Take your handling to the next level.



H. Front Chin Aero Deflector

Less turbulence. More downforce. Aggression with purpose.

ADDITIONAL ACCESSORIES:

- Rear Decklid Spoiler
- Splash Guards
- NISMO Carpeted Floor Mats
- NISMO Brake Pads
- Nissan Valve Stem Caps
- Portable Cargo Organizer
- And More

GENUINE NISSAN ACCESSORIES

TAKE PART IN PUBLIC DISPLAYS OF AFFECTION

For more information and to shop online for 370Z® Genuine Nissan Accessories, go to bit.ly/20370Z-estore



Nissan 370Z® Sport shown in Brilliant Silver Metallic with Front Chin Aero Deflector (standard on Sport and Sport Touring trims), NISMO® Rear Decklid Spoiler, and NISMO® Graphics Kit.

SPECIFICATIONS

| | 370Z* | Sport | Sport Touring | 50th | NISMO* |
|---|-------|-------|---------------|------|--------|
| Engine | | | | | |
| 3.7-liter DOHC 24-valve V6 engine ¹² | ■ | ■ | ■ | ■ | ■ |
| ...Horsepower – 332 hp @ 7,000 rpm | | | | | |
| ...Torque – 270 lb.-ft. @ 5,200 rpm | | | | | |
| NISMO-tuned 3.7-liter DOHC 24-valve V6 engine | | | | | ■ |
| ...Horsepower – 350 hp @ 7,400 rpm | | | | | |
| ...Torque – 276 lb.-ft. @ 5,200 rpm | | | | | |
| Continuously Variable Valve Timing Control System (CVTCS) with Variable Valve Event and Lift (VVEL*) on intake valves | ■ | ■ | ■ | ■ | ■ |
| Twin-intake system | ■ | ■ | ■ | ■ | ■ |
| NISMO-tuned free-flow dual exhaust with H-pipe configuration | | | | | ■ |
| Drivetrain | | | | | |
| Front engine/Rear-Wheel Drive | ■ | ■ | ■ | ■ | ■ |
| Carbon-fiber composite driveshaft | ■ | ■ | ■ | ■ | ■ |
| 6-speed close-ratio manual transmission | ■ | ■ | ■ | ■ | ■ |
| SynchroRev Match ¹³ | | ■ | | | ■ |
| 7-speed automatic transmission with manual shift mode and Downshift Rev Matching | □ | | ■ | □ | □ |
| Magnesium paddle shifters ¹⁴ | | | ■ | □ | □ |
| EXEDY® high-performance clutch ¹⁵ | ■ | ■ | ■ | ■ | ■ |
| Viscous Limited-slip Rear Differential | | ■ | | ■ | ■ |
| Brakes | | | | | |
| 12.6" Front and 12.1" rear vented discs | ■ | | | | |
| Nissan sport brakes with 4-piston front, 2-piston rear aluminum calipers and 14.0" front, 13.8" rear vented discs | | ■ | ■ | ■ | ■ |
| High-rigidity brake hoses and R35 Special II brake fluid | | | | | ■ |
| 4-wheel Anti-lock Braking System (ABS) | ■ | ■ | ■ | ■ | ■ |
| Electronic Brake force Distribution (EBD) | ■ | ■ | ■ | ■ | ■ |
| Suspension/Chassis Bracing/Steering | | | | | |
| Double-wishbone aluminum-alloy front suspension with aluminum subframe | ■ | ■ | ■ | ■ | ■ |
| Multi-link aluminum-alloy rear suspension | ■ | ■ | ■ | ■ | ■ |
| Front and rear stabilizer bars | ■ | ■ | ■ | ■ | ■ |
| Sport-tuned shock absorbers | ■ | ■ | ■ | ■ | |
| NISMO®-tuned suspension with increased spring and dampening rates and larger stabilizer bars | | | | | ■ |
| Driver Assistance Technologies | | | | | |
| Cruise control | ■ | ■ | ■ | ■ | ■ |
| RearView Monitor ⁶ | ■ | ■ | ■ | ■ | ■ |
| Vehicle Dynamic Control (VDC) ¹⁵ with Traction Control System (TCS) | ■ | ■ | ■ | ■ | ■ |
| Wheels/Tires | | | | | |
| 18" x 8.0" (front)/18" x 9.0" (rear) black-finish aluminum-alloy wheels | ■ | | | | |
| 19" x 9.0" (front)/19" x 10.0" (rear) forged alloy wheels by RAYS ⁹ | | ■ | ■ | | |
| 19" x 9.0" (front)/19" x 10.0" (rear) 50th Anniversary Edition forged alloy wheels by RAYS ⁹ | | | | ■ | |
| 19" x 9.5" (front)/19" x 10.5" (rear) NISMO forged alloy wheels by RAYS ⁹ | | | | | ■ |

■ Standard □ Optional

| | 370Z* | Sport | Sport Touring | 50th | NISMO* |
|---|-------|-------|---------------|------|--------|
| Wheels/Tires (continued) | | | | | |
| 225/50WR18 (front) / 245/45WR18 (rear) Yokohama® ADVAN Sport® high-performance tires | ■ | | | | |
| 245/40WR19 (front) / 275/35WR19 (rear) Bridgestone® Potenza® S007 high-performance tires | | ■ | ■ | ■ | |
| 245/40YR19 (front) / 285/35YR19 (rear) Dunlop® SP Sport MAXX® GT600 high-performance tires ⁴ | | | | | ■ |
| Chassis | | | | | |
| 3-point front strut tower brace | ■ | ■ | ■ | ■ | |
| NISMO reinforced 3-point front strut tower brace | | | | | ■ |
| Rear underbody V-brace | ■ | ■ | ■ | ■ | ■ |
| NISMO front and rear performance chassis dampers | | | | | ■ |
| Aerodynamics | | | | | |
| Front chin aero deflector | | ■ | ■ | | |
| Rear spoiler | | ■ | ■ | | |
| NISMO aerodynamic body design - unique front and rear fascia, side sills and rear spoiler | | | | | ■ |
| Exterior Features | | | | | |
| Automatic on/off headlights | ■ | ■ | ■ | ■ | ■ |
| High Intensity Discharge (HID) bi-functional xenon headlights with smoked housing | ■ | ■ | ■ | ■ | ■ |
| LED Daytime Running Lights | ■ | ■ | ■ | ■ | ■ |
| LED taillights | ■ | ■ | ■ | ■ | ■ |
| Z® fender emblems | ■ | | | | |
| LED illuminated Z side marker emblems | | ■ | ■ | ■ | ■ |
| 50th Anniversary Edition side marker decal | | ■ | ■ | ■ | ■ |
| Aluminum hood, doors and hatch | ■ | ■ | ■ | ■ | ■ |
| Body-color power outside mirrors | | ■ | ■ | ■ | ■ |
| Body-color power heated outside mirrors | | ■ | ■ | ■ | ■ |
| 50th Anniversary Edition unique exterior graphics | | | | ■ | |
| 50th Anniversary Edition exterior badging | | | | ■ | |
| Comfort/Convenience | | | | | |
| Automatic Temperature Control with in-cabin microfilter | ■ | ■ | ■ | ■ | ■ |
| Nissan Intelligent Key® with Push Button Ignition | ■ | ■ | ■ | ■ | ■ |
| Tilt steering column with integrated gauges | ■ | ■ | ■ | ■ | ■ |
| 50th Anniversary Edition tachometer | | | | ■ | |
| NISMO tachometer | | ■ | ■ | ■ | ■ |
| Auto-dimming rearview mirror | ■ | ■ | ■ | ■ | ■ |
| HomeLink® Universal Transceiver | | | ■ | ■ | ■ |
| Rear cargo cover | | | ■ | ■ | ■ |
| Seating/Appointments | | | | | |
| 8-way manual adjustable driver's seat | ■ | ■ | | | ■ |
| 4-way power, 4-way manual adjustable driver's seat | | | ■ | ■ | |
| Driver's manual lumbar support | | | ■ | | |
| 4-way adjustable passenger's seat | ■ | ■ | | | |
| 4-way power adjustable passenger's seat | | | ■ | ■ | |
| Driver and passenger knee support | ■ | ■ | ■ | ■ | ■ |

| | 370Z* | Sport | Sport Touring | 50th | NISMO* |
|--|-------|-------|---------------|------|--------|
| Seating/Appointments (continued) | | | | | |
| Heated seats | | | ■ | ■ | |
| Cloth seat trim | ■ | ■ | | | |
| Leather-appointed sport seats with synthetic suede inserts | | | ■ | | |
| 50th Anniversary Edition leather-appointed seats with synthetic suede inserts | | | | ■ | |
| NISMO Recaro® leather-appointed seats with Alcantara® inserts | | | | | ■ |
| Synthetic suede door panel inserts | | | ■ | ■ | |
| Leather-wrapped steering wheel and shift knob | ■ | ■ | ■ | | |
| 50th Anniversary Edition Alcantara®/leather-wrapped steering wheel | | | | ■ | |
| NISMO Alcantara®/leather-wrapped steering wheel and smooth leather-wrapped shift knob | | | | | ■ |
| Aluminum-trimmed pedals | | | ■ | | ■ |
| 50th Anniversary Edition unique interior stitching | | | | ■ | |
| 50th Anniversary Edition interior badging | | | | ■ | |
| NISMO signature red interior stitching | | | | | ■ |
| Infotainment | | | | | |
| 7" touch-screen display | | | ■ | | ■ |
| Nissan Hard Drive Navigation System ¹⁰ | | | ■ | | ■ |
| Nissan Voice Recognition for audio and navigation ¹⁰ | | | ■ | | ■ |
| SiriusXM® Traffic and Weather with 3-month complimentary trial access ⁷ | | | ■ | | ■ |
| Fine Vision electroluminescent gauges with multi-function drive computer | ■ | ■ | ■ | ■ | ■ |
| 3-bay gauge cluster (oil temperature, voltmeter, and digital clock) | ■ | ■ | ■ | ■ | ■ |
| Upshift indicator light ¹³ | ■ | ■ | ■ | ■ | ■ |
| AM/FM/CD audio system with six speakers | ■ | | | | |
| Bose® Premium Audio System with eight speakers, including dual subwoofers | | ■ | ■ | ■ | ■ |
| SiriusXM® Radio with 3-month complimentary trial access ⁷ | | | ■ | | ■ |
| Active Noise Cancellation | | ■ | ■ | ■ | ■ |
| Active Sound Enhancement | | ■ | ■ | ■ | ■ |
| Speed-sensitive volume control | | | ■ | ■ | ■ |
| DVD video playback capability | | | ■ | ■ | ■ |
| Auxiliary audio input jack ⁸ | ■ | ■ | ■ | ■ | ■ |
| RCA audio/video input jacks ⁸ | | | ■ | ■ | ■ |
| USB port ⁸ | ■ | ■ | ■ | ■ | ■ |
| Bluetooth® streaming audio ⁷ | | | ■ | ■ | ■ |
| Safety/Security | | | | | |
| Nissan Advanced Air Bag System with dual-stage supplemental front air bags with seat belt and occupant classification sensors ⁹ | ■ | ■ | ■ | ■ | ■ |
| Driver and passenger seat-mounted side-impact supplemental air bags ⁹ | ■ | ■ | ■ | ■ | ■ |
| Roof-mounted curtain side-impact supplemental air bags for occupants head protection ⁹ | ■ | ■ | ■ | ■ | ■ |
| Active Head Restraints | ■ | ■ | ■ | ■ | ■ |
| Tire Pressure Monitoring System (TPMS) ¹⁶ | ■ | ■ | ■ | ■ | ■ |

DIMENSIONS/WEIGHTS/MPG

| Dimensions – Inches | | | | | |
|--------------------------|---|--------------|----------------------|-------------|---------------|
| Exterior | | | | | |
| Wheelbase | 100.4 | | | | |
| Overall length | 167.5 (170.5 NISMO) | | | | |
| Overall width | 72.6 (73.6 NISMO) | | | | |
| Overall height | 51.8 | | | | |
| Track width (front/rear) | 60.1 (61.2 NISMO) / 61.6 (62.2 NISMO) | | | | |
| Aerodynamics – Cd | | | | | |
| Drag coefficient | .30 (370Z, 50th Anniversary Edition, and NISMO), .29 (Sport and Sport Touring) | | | | |
| Interior | | | | | |
| Head room | 38.2 | | | | |
| Shoulder room | 54.4 | | | | |
| Leg room | 42.9 | | | | |
| Curb Weights | | | | | |
| | 370Z* | Sport | Sport Touring | 50th | NISMO* |
| Manual transmission | 3,333 | 3,386 | | 3,386 | 3,457 |
| Automatic transmission | 3,362 | | 3,439 | 3,413 | 3,486 |

| 2019 EPA Fuel Economy Estimates | | | | | |
|---|----------|--|--|--|--|
| City/Hwy/Combined MPG | | | | | |
| Manual transmission | 17/26/20 | | | | |
| Automatic transmission | 19/26/22 | | | | |
| <small>Fuel economy based on 2019 EPA fuel economy estimates. EPA data not available at time of publication. Actual mileage may vary with driving conditions – use for comparison only.</small> | | | | | |

NISSAN ROADSIDE ASSISTANCE

Your peace of mind is on us. For 36 months or 36,000 miles, whichever comes first, your new Nissan is covered for the following:¹⁷

- Flat-tire changes
- Trip Interruption benefits
- Vehicle lockouts
- Emergency fuel delivery
- Jump starts

Follow Nissan on:



visit NissanUSA.com/z

PRINTED IN POLAND