



Innovation
that excites

2017
ALTIMA[®]

SWIPE FOR MORE INFO

Download the Interactive Brochure Hub app on your tablet and you'll have Altima[®] and the whole Nissan lineup at your fingertips. Get the full product story enhanced with interactive demos and videos, plus complete info on trim levels, colors, accessories, and more.



Nissan Interactive Brochure Hub available free on the App Store[®] and Google Play.[®]

Or go to NissanUSA.com to view on your desktop.



NISSAN ROADSIDE ASSISTANCE

Your peace of mind is on us. For 36 months or 36,000 miles, whichever comes first, your new Nissan is covered for the following:¹

- Flat-tire changes
- Jump starts
- Trip Interruption benefits
- Vehicle lockouts
- Emergency fuel delivery

Follow Nissan on:



visit NissanUSA.com/altima

¹Roadside Assistance and Trip Interruption available during the first 36 months or 36,000 miles (whichever occurs first) after initial new vehicle delivery. Restrictions apply. See Owner's Manual for details. The App Store[®] logo is a registered trademark of Apple, Inc. All rights reserved. Facebook[®] is a registered trademark of Facebook, Inc. Google Play[®] is a registered trademark of Google, Inc. Twitter[®] is a registered trademark of Twitter, Inc. YouTube[®] is a registered trademark of Google Inc.

PRINTED IN POLAND



Innovation
that excites

TAKE ON the predictable with a look that's aggressive and strong. Hit the road, and marvel at how well the available brilliant LED headlights light up the passing lane – now we're getting somewhere. Inside, you'll find everything you want, but more important, the one thing you really need: a true sense of connection to what's possible. The 2017 Nissan Altima®. It's time your ride kept up with your **EXPECTATIONS.**

See Altima® in action at:
bit.ly/17Altimavideo

Nissan Altima® 3.5 SR shown in Cayenne Red.



39

MPG HIGHWAY¹

POWERFUL, YET EFFICIENT

Fun meets frugal. A roomy sedan that gets up to 39 MPG highway is smart.¹ Combining a powerful 4-cylinder engine and a responsive Xtronic CVT* (Continuously Variable Transmission) for zip when you need it and sip when you don't - that's brilliant.

Xtronic CVT* | 179-hp, 4-cylinder engine | Wind-cheating aerodynamics

NISSAN INTELLIGENT SAFETY SHIELD TECHNOLOGIES

Whether you're changing lanes on the highway or deftly maneuvering your way out of a parking spot, Altima's available Intelligent Safety Shield Technologies use an array of radar-based sensors to act as a second set of eyes, giving you a whole new way to double-check.

Predictive Forward Collision Warning² | Forward Emergency Braking³ | Blind Spot Warning⁴ | Rear Cross Traffic Alert⁵



MEET THE ALTIMA® SR

From its sport-tuned suspension to its steering wheel-mounted paddle shifters, it's clear: The Altima SR is about much more than turning heads. It's about delivering a thrilling driving experience. And with unique-design 18" alloy wheels, rear sport spoiler, and more, its aggressive looks will really get your heart pumping.

BEAUTY RUNS DEEP

COMFORT AT YOUR FINGERTIPS

No matter if it's a heat wave or a cold snap, Altima's Remote Engine Start System with Intelligent Climate Control helps make sure you always get into a comfortable car. On hot days, it can adjust temperature and air flow for a quick cool-down, while on cold days, it can adjust air flow to warm up the cabin in a hurry.⁶

¹Fuel economy based on targeted 2017 EPA fuel economy estimates for 2017 Altima® - EPA data not available at time of publication. Targeted 2017 fuel economy estimates (27 city MPG/39 highway MPG/31 combined MPG for 2017 Altima® 2.5, 2.5 S, 2.5 SV, 2.5 SL trims) based on Nissan internal testing results, subject to EPA confirmation. Actual mileage may vary with driving conditions - use for comparison only. ²PCFW is intended to warn you before a collision occurs; it cannot prevent a collision. Speed and other limitations apply. See Owner's Manual for details. ³FEB cannot prevent accidents due to carelessness or dangerous driving techniques. It may not provide warning or braking in certain conditions. Speed limitations apply. ⁴Blind Spot Warning is not a substitute for proper lane change procedures. The system will not prevent contact with other vehicles or accidents. It may not detect every vehicle or object around you. ⁵Not a substitute for proper backing procedures. May not detect all moving vehicles. Speed and other limitations apply. See Owner's Manual for details. ⁶State laws may apply; review local laws before using.

CHOOSE YOUR COLOR



Glacier White QAK

2.5 2.5 SR 2.5 SL
2.5 S 2.5 SV 3.5 SR 3.5 SL



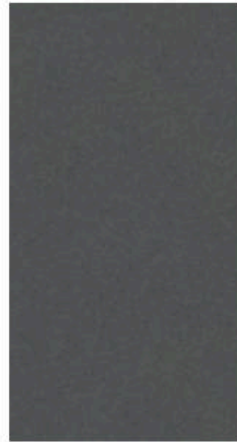
Pearl White¹ QAB

2.5 2.5 SR 2.5 SL
2.5 S 2.5 SV 3.5 SR 3.5 SL



Brilliant Silver K23

2.5 2.5 SR 2.5 SL
2.5 S 2.5 SV 3.5 SR 3.5 SL



Gun Metallic KAD

2.5 2.5 SR 2.5 SL
2.5 S 2.5 SV 3.5 SR 3.5 SL



Java Metallic CAJ

2.5 2.5 SR 2.5 SL
2.5 S 2.5 SV 3.5 SR 3.5 SL

BEIGE LEATHER				
BEIGE CLOTH	■			
CHARCOAL LEATHER				
CHARCOAL CLOTH	■			
CHARCOAL SPORT CLOTH				



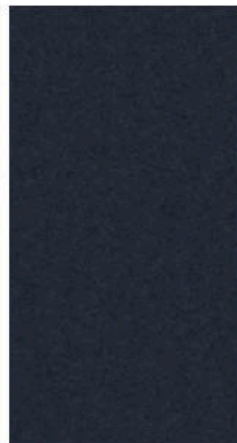
Cayenne Red NAH

2.5 2.5 SR 2.5 SL
2.5 S 2.5 SV 3.5 SR 3.5 SL



Deep Blue Pearl RAY

2.5 2.5 SR 2.5 SL
2.5 S 2.5 SV 3.5 SR 3.5 SL



Storm Blue RBD

2.5 2.5 SR 2.5 SL
2.5 S 2.5 SV 3.5 SR 3.5 SL



Super Black KH3

2.5 2.5 SR 2.5 SL
2.5 S 2.5 SV 3.5 SR 3.5 SL

■ Standard

¹Extra cost option.

Nissan has taken care to ensure that the color swatches presented here are the closest possible representations of actual vehicle colors. Swatches may vary slightly due to the printing process and whether viewed in daylight, fluorescent or incandescent light. Please see the actual colors at your local Nissan dealer.

BEIGE LEATHER				
BEIGE CLOTH	■	■		
CHARCOAL LEATHER				
CHARCOAL CLOTH	■	■		
CHARCOAL SPORT CLOTH			■	

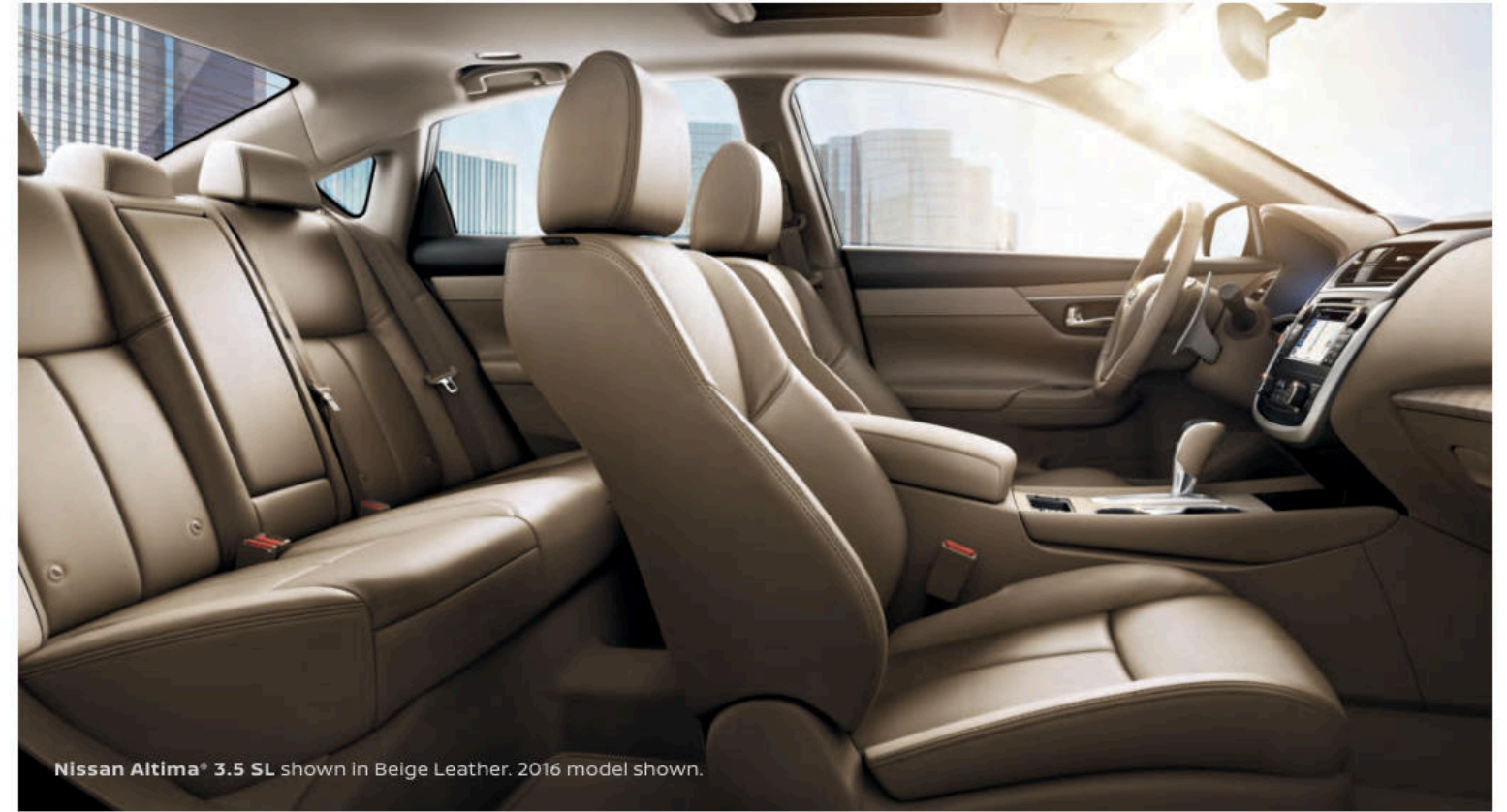
BEIGE LEATHER				
BEIGE CLOTH	■	■		
CHARCOAL LEATHER				
CHARCOAL CLOTH	■	■		
CHARCOAL SPORT CLOTH			■	

BEIGE LEATHER				
BEIGE CLOTH				
CHARCOAL LEATHER				
CHARCOAL CLOTH	■	■		
CHARCOAL SPORT CLOTH			■	

BEIGE LEATHER				
BEIGE CLOTH	■	■		
CHARCOAL LEATHER				
CHARCOAL CLOTH	■	■		
CHARCOAL SPORT CLOTH			■	

BEIGE LEATHER				
BEIGE CLOTH	■	■		
CHARCOAL LEATHER				
CHARCOAL CLOTH	■	■		
CHARCOAL SPORT CLOTH			■	

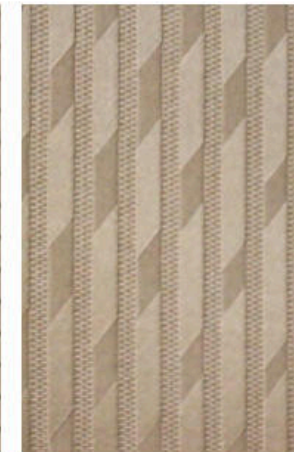
CHOOSE YOUR INTERIOR



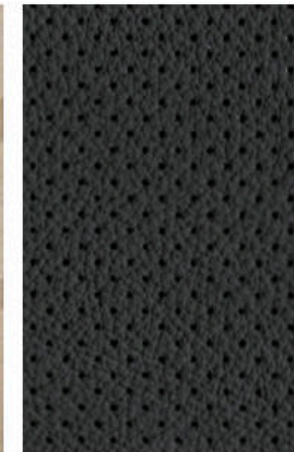
Nissan Altima® 3.5 SL shown in Beige Leather. 2016 model shown.



Beige Leather
2.5 SL | 3.5 SL



Beige Cloth
2.5 | 2.5 S | 2.5 SV



Charcoal Leather
2.5 SL | 3.5 SL



Charcoal Cloth
2.5 | 2.5 S | 2.5 SV



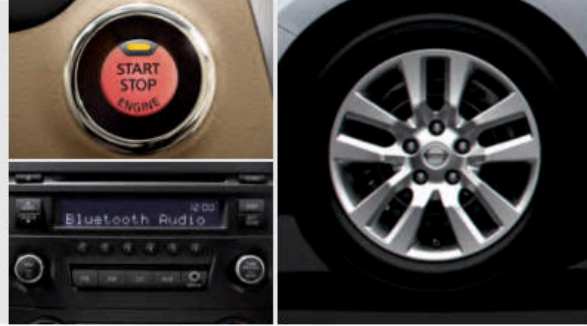
Charcoal Sport Cloth
2.5 SR | 3.5 SR

CHOOSE YOUR TRIM LEVEL

4-CYLINDER ENGINE

2.5

2.5-liter DOHC 16-valve 4-cylinder engine, Xtronic CVT[®] (Continuously Variable Transmission), Active Understeer Control, Vehicle Dynamic Control (VDC),¹ Traction Control System (TCS), remote keyless entry with Push Button Ignition, Advanced Drive-Assist[®] Display,^{2,3} Bluetooth[®] Hands-free Phone System⁴ and streaming audio via Bluetooth[®] wireless technology,⁴ Tire Pressure Monitoring System (TPMS)⁵ with Easy-Fill Tire Alert,⁶ AM/FM/CD audio system with four speakers, illuminated steering wheel-mounted audio controls, air conditioning, 60/40 split fold-down rear seatbacks, six air bags



2.5 S INCLUDES 2.5 EQUIPMENT PLUS:

5.0" Color monitor, illuminated USB connection port for iPod[®] interface or other compatible devices,⁷ Siri[®] Eyes Free,⁸ hands-free text messaging assistant,⁹ RearView Monitor,¹⁰ AM/FM/CD audio system with six speakers, cruise control with steering wheel-mounted controls, air conditioning with in-cabin microfilter, sun visors with illuminated vanity mirrors and extensions, driver's seatback pocket, Nissan Intelligent Key[®], Tire Pressure Monitoring System (TPMS)⁵ with individual tire pressure display and Easy-Fill Tire Alert,⁶ Smart Auto Headlights



2.5 SR INCLUDES 2.5 S EQUIPMENT PLUS:

18" Aluminum-alloy sport wheels, sport-tuned suspension, sport spoiler, smoked headlight housing, fog lights, Daytime Running Lights (DRL), paddle shifters and manual shift mode, leather-wrapped steering wheel, leather-wrapped shift knob, unique sport interior accents, 8-way power driver's seat, 2-way driver's power lumbar support



2.5 SV INCLUDES 2.5 S EQUIPMENT PLUS:

17" Aluminum-alloy wheels, Dual Zone Automatic Temperature Control (ATC), Remote Engine Start System (RESS)¹¹ with Intelligent Climate Control, Rear Cross Traffic Alert (RCTA),¹² Blind Spot Warning (BSW),¹³ SiriusXM[®] Satellite Radio,¹⁴ leather-wrapped steering wheel, fog lights, Daytime Running Lights (DRL), 8-way power driver's seat, 2-way driver's power lumbar support



2.5 SL INCLUDES 2.5 SV EQUIPMENT PLUS:

Bose[®] Premium Audio System with 9 speakers, heated front seats, 4-way power front passenger's seat, leather-appointed seats, leather-wrapped shift knob, premium interior trim, rear passenger air conditioning vents, HomeLink[®] Universal Transceiver, auto-dimming inside rearview mirror with digital compass, passenger-side front-window one-touch auto-up/down with auto-reverse, manual folding outside mirrors with LED turn indicators, heated steering wheel, heated outside mirrors



V6 ENGINE

3.5 SR INCLUDES 2.5 SR EQUIPMENT PLUS:

3.5-L DOHC 24-valve V6 engine, 270 horsepower, 251 lb-ft of torque, LED headlights with integrated signature



3.5 SL INCLUDES 2.5 SL EQUIPMENT PLUS:

3.5-L DOHC 24-valve V6 engine, 270 horsepower, 251 lb-ft of torque, 18" Aluminum-alloy wheels, LED headlights with integrated signature, NissanConnect[™] with Navigation and Mobile Apps, including 7.0" color touch-screen monitor,¹⁵ Nissan Voice Recognition for navigation and audio, SiriusXM[®] Traffic and Travel Link[®],¹⁴ Front and Rear Sonar System,¹⁶ power sliding moonroof with tilt



¹VDC, which should remain on when driving except when freeing the vehicle from mud or snow, cannot prevent accidents due to abrupt steering, carelessness, or dangerous driving techniques. ²Driving is serious business and requires your full attention. If you have to use the feature while driving, exercise extreme caution at all times so full attention may be given to vehicle operation. ³Information displayed is dependent on how vehicle is equipped. ⁴Availability of specific features is dependent upon the phone's Bluetooth[®] support. Please refer to your phone Owner's Manual for details. Bluetooth[®] word mark and logos are owned by Bluetooth SIG, Inc., and any use of such marks by Nissan is under license. See NissanUSA.com/bluetooth for details. ⁵TPMS is not a substitute for regular tire pressure checks. ⁶Vehicle must be on for the Easy-Fill Tire Alert to operate. ⁷Driving is serious business and requires your full attention. If you have to use the connected device while driving, exercise extreme caution at all times so full attention may be given to vehicle operation. iPod[®] is a registered trademark of Apple, Inc. All rights reserved. iPod[®] or other external device not included. ⁸Driving is serious business and requires your full attention. Only use feature when safe to do so. Compatible smartphone required. Availability of specific feature is dependent upon the phone's Bluetooth[®] support. Please refer to your phone Owner's Manual for details. Bluetooth[®] word mark and logos are owned by Bluetooth SIG, Inc. and any use of such marks by Nissan is under license. See NissanUSA.com/connect for details. Text rates and/or data usage may apply. Certain services, including Siri[®], are provided by independent companies not within Nissan's control. Should service provider terminate/restrict service, service may be suspended or terminated without notice or liability to Nissan and/or its agents. Nissan not responsible for any equipment replacement or upgrades, or associated costs, that may be required for continued operation due to service changes. Siri[®] Eyes Free is a registered trademark of Apple, Inc. ⁹Use the text messaging feature after stopping your vehicle in a safe location. If you have to use the feature while driving, exercise extreme caution at all times so full attention may be given to vehicle operation. Compatible smartphone required. Text rates and/or data usage may apply. ¹⁰Parking aid/convenience feature. Cannot completely eliminate blind spots. May not detect every object and does not warn of moving objects. Always check surroundings and turn to look behind you before moving vehicle. ¹¹State laws may apply; review local laws before using. ¹²Not a substitute for proper backing procedures. May not detect all moving vehicles. Speed and other limitations apply. See Owner's Manual for details. ¹³Blind Spot Warning is not a substitute for proper lane change procedures. The system will not prevent contact with other vehicles or accidents. It may not detect every vehicle or object around you. ¹⁴Required monthly subscriptions sold separately for each available SiriusXM feature after trial period, and are continuous until you call SiriusXM to cancel. Installation costs, one-time activation fee, other fees and taxes will apply. Each SiriusXM feature availability is dependent upon vehicle model, trim level, packaging, and/or options, and may only be available in select markets. Satellite Radio U.S. service, NavWeather[®] service, and SiriusXM Travel Link[®] services (if any of the foregoing features are equipped on vehicle) available only to those 18 or older in the 48 contiguous states and D.C. Fees and programming subject to change. Subscriptions governed by Customer Agreement available at siriusxm.com. ©2016 Sirius XM Radio Inc. Sirius[®], XM[®] and all related marks and logos are trademarks of Sirius XM Radio Inc. ¹⁵Driving is serious business. Only use features when safe to do so. App availability is dependent upon vehicle model, trim level, packaging, and/or options. See NissanUSA.com/connect for complete app availability details. Never program while driving. GPS mapping may not be detailed in all areas or reflect current road status. Compatible smartphone required. Cellular network and GPS signals not available in all areas and/or at all times. Technology is evolving, and changes by independent companies are not within Nissan's control. Nissan is not responsible for associated costs that may be required for continued operation due to cellular network termination (including equipment upgrades, if available, or roaming charges on alternative networks) or other third party changes. Should a third party provider terminate/restrict service, service may be terminated without notice and with no liability to Nissan and its agents or affiliates. Subscription Agreement required and terms and conditions of Subscription Agreement apply. See NissanUSA.com/connect for details. Text rates and/or data usage may apply. ¹⁶The Sonar System is a convenience, not a substitute for proper parking and/or backing procedures. Always check that it is safe to do so before moving vehicle. May not detect every object. Bose[®] is a registered trademark of The Bose Corporation. HomeLink[®] is a registered trademark of Gentex Corporation.

CHOOSE YOUR PACKAGE



2.5 S | POWER DRIVER'S SEAT PACKAGE:

- 6-way power driver's seat



2.5 SR | LED APPEARANCE PACKAGE:

- LED headlights with integrated signature



2.5 SV | COLD WEATHER PACKAGE:

- Heated cloth front seats
- Heated outside mirrors
- Heated steering wheel



2.5 SV | NAVIGATION PACKAGE:^{1,2}

- NissanConnect™ with Navigation and Mobile Apps, including 7.0" color touch-screen monitor²
- Nissan Voice Recognition for navigation and audio⁴
- SiriusXM® Traffic with Travel Link®⁸



2.5 SV | CONVENIENCE PACKAGE:

- Power sliding glass moonroof with one-touch open/close and tilt feature
- Manual folding outside mirrors with LED turn signal indicators
- Rear passenger air conditioning vents
- Passenger-side front-window one-touch auto-up/down with auto-reverse

- Auto-dimming inside rearview mirror with digital compass
- HomeLink® Universal Transceiver
- Mood lighting



2.5 SL | MOONROOF PACKAGE:

- Power sliding glass moonroof with one-touch open/close and tilt feature



2.5 SL | TECHNOLOGY PACKAGE:¹

- NissanConnect™ with Navigation and Mobile Apps, including 7.0" color touch-screen monitor²
- NissanConnect™ Services powered by SiriusXM®³
- Nissan Voice Recognition for navigation and audio⁴
- Predictive Forward Collision Warning (PFCW)⁵
- Forward Emergency Braking (FEB)⁶
- Intelligent Cruise Control (ICC)⁷
- LED headlights with integrated signature
- Smoked headlight housing



3.5 SL | TECHNOLOGY PACKAGE:

- NissanConnect™ Services powered by SiriusXM®³
- Predictive Forward Collision Warning (PFCW)⁵
- Forward Emergency Braking (FEB)⁶
- Intelligent Cruise Control (ICC)⁷

¹Integrated in-mirror digital compass is deleted with this package. ²Driving is serious business. Only use features when safe to do so. App availability is dependent upon vehicle model, trim level, packaging, and/or options. See NissanUSA.com/connect for complete app availability details. Never program while driving. GPS mapping may not be detailed in all areas or reflect current road status. Compatible smartphone required. Cellular network and GPS signals not available in all areas and/or at all times. Technology is evolving, and changes by independent companies are not within Nissan's control. Nissan is not responsible for associated costs that may be required for continued operation due to cellular network termination (including equipment upgrades, if available, or roaming charges on alternative networks) or other third party changes. Should a third party provider terminate/restrict service, service may be terminated without notice and with no liability to Nissan and its agents or affiliates. Subscription Agreement required and terms and conditions of Subscription Agreement apply. See NissanUSA.com/connect for details. Text rates and/or data usage may apply. ³Driving is serious business. Only use NissanConnect™ Services powered by SiriusXM® when safe to do so. Late availability for some features. Services, including automatic crash notification and SOS, are dependent upon the telematics device being in operative condition, its ability to connect to a wireless network, compatible wireless network availability, navigation map data, and GPS satellite signal receptions, the absence of which can limit or prevent the ability to reach NissanConnect Services Customer Care or receive support. Never program while driving. GPS mapping may not be detailed in all areas or reflect current road status. You are responsible for using Remote Engine Start and Remote Horn features in accordance with any laws, rules or ordinances in effect in your vehicle's location. Remote Engine Start/Stop not available on all models. Cellular network not available in all areas and/or at all times. Cellular technology is evolving and changes to cellular networks provided by independent companies are not within Nissan's or Sirius XM Radio Inc.'s control. Neither Nissan nor

Sirius XM are responsible for associated costs that may be required for continued operation due to cellular network termination (including equipment upgrades, if available, or roaming charges on alternative networks). Should cellular provider terminate/restrict services, service may be terminated without notice and with no liability to Nissan, Sirius XM and/or their respective agents or affiliates. Certain services require a PIN for activation. See NissanUSA.com/connect for details. Enrollment and Subscription Agreement required to receive full suite of services. Terms and conditions of Subscription Agreement apply. Six (6) month trial period begins on your date of vehicle purchase or lease of a new Nissan; subsequently a paid subscription is required at the then current rate to continue to receive services. Text rates and/or data usage may apply. ⁴Never program while driving. GPS mapping may not be detailed in all areas or reflect current road status. ⁵PFCW is intended to warn you before a collision occurs; it cannot prevent a collision. Speed and other limitations apply. See Owner's Manual for details. ⁶FEB cannot prevent accidents due to carelessness or dangerous driving techniques. It may not provide warning or braking in certain conditions. Speed limitations apply. ⁷Intelligent Cruise Control is not a collision avoidance system or warning device. Designed to use limited braking. Failure to apply the brakes could result in an accident. HomeLink® is a registered trademark of Genex Corporation. ⁸Required monthly subscriptions sold separately for each available SiriusXM feature after trial period, and are continuous until you call SiriusXM to cancel. Installation costs, one-time activation fee, other fees and taxes will apply. Each SiriusXM feature availability is dependent upon vehicle model, trim level, packaging, and/or options, and may only be available in select markets. Satellite Radio U.S. service, NavWeather® service, and SiriusXM Travel Link® services (if any of the foregoing features are equipped on vehicle) available only to those 18 or older in the 48 contiguous states and D.C. Fees and programming subject to change. Subscriptions governed by Customer Agreement available at siriusxm.com. ©2016 Sirius XM Radio Inc. Sirius®, XM® and all related marks and logos are trademarks of Sirius XM Radio Inc.

CHOOSE YOUR ACCESSORIES



Every Genuine Nissan Accessory is custom-fit, custom-designed and durability-tested. Each one is also backed by Nissan's 3-year/36,000-mile (whichever occurs first) limited warranty (if installed by dealer at the time of purchase)¹ Plus, they can be financed when installed by dealer at time of purchase.

- A. Chrome Rear Bumper Protector**
Proof that the best defense is great style.
- B. Nissan 4G WiFi & Apps²**
Get on the road and online.
- C. Rear Decklid Spoiler**
May the downforce be with you.
- D. All-season Floor Mats**
Skip the mud – and other messes.
- E. Illuminated Kick Plates**
Fewer scuffs and a grand entry, every time.
- F. Remote Engine Start System³**
Get a head start on your next road trip.
- G. Cargo Organizer⁴**
Bring some order to your cargo area.
- H. Interior Accent Lighting**
Add a warm glow to the mood.

Additional Accessories:

- USB Charging Ports^{5, 6}
- Wireless Smartphone Charger⁵
- Body Side Moldings
- Carpeted Floor Mats
- Carpeted Trunk Mat
- Sport Carpeted Floor Mats
- Trunk Protector⁴
- Hideaway Trunk Net
- Trunk Sub-floor Organizer
- Clear Rear Bumper Protector
- And More

¹Covered by Nissan's Limited Warranty on Genuine Nissan Replacement Parts, Genuine NISMO® S-Tune Parts, and Genuine Nissan Accessories for the longer of 12 months/12,000 miles (whichever occurs first) or the remaining period under the 3-year/36,000-mile (whichever occurs first) Nissan New Vehicle Limited Warranty. Terms and conditions apply. See Warranty Information Booklet for details.

²Driving is serious business and requires your full attention. Only use Nissan WiFi and Apps Services powered by Autonet Mobile when safe to do so. Only available on select models. See Nissanwifi.com for complete availability details. Never program while driving. GPS mapping may not be detailed in all areas or reflect current road status. Nissan WiFi and Apps Services requires compatible cellular network provided by Autonet, navigation map data, and GPS satellite signal receptions, the absence of which can limit or prevent the ability of the Nissan WiFi and Apps Services. Cellular network and GPS signals not available in all areas and/or at all times. Technology is evolving, and changes to cellular networks provided by independent companies or other third party changes that impact Nissan WiFi and Apps Services are not within Nissan's control. Should a third party or Autonet Mobile terminate or make changes that impact the service, service may be terminated without notice and Nissan shall have no liability. The Apps Services requires compatible smartphone or personal computer, not included with vehicle. Enrollment and Subscription Agreement is required to receive full suite of Nissan WiFi and

GENUINE NISSAN ACCESSORIES

TURN BRAND-NEW INTO ALL YOU

For more information and to shop online for Altima® Genuine Nissan Accessories, go to bit.ly/17altima-estore



Nissan Altima® 3.5 SL shown in Cayenne Red with LED Fog Lights Upgrade Kit, Moonroof Wind Deflector, Splash Guards, Chrome Body Side Moldings, External Ground Lighting, and Rear Decklid Spoiler. 2016 model shown.

Apps Services through Autonet Mobile. The 90 day trial period for Apps Services begins when the unit is registered with Autonet Mobile; subsequently the respective paid subscription for WiFi is at the then current rate to continue to receive respective services. Terms and conditions of Subscription Agreement then apply. Text rates and/or data usage may apply. ³State laws may apply; review local laws before using. ⁴Cargo and load capacity limited by weight and distribution. Always secure all cargo. ⁵Driving is serious business and requires your full attention. If you have to use the connected device while driving, exercise extreme caution at all times so full attention may be given to vehicle operation. External device not included. ⁶Late availability.

SPECIFICATIONS

Engine	2.5	2.5 S	2.5 SR	2.5 SV	2.5 SL	3.5 SR	3.5 SL
QR25DE – 2.5-liter DOHC 16-valve 4-cylinder	■	■	■	■	■		
—Horsepower – 179 hp @ 6,000 rpm							
—Torque – 177 lb-ft @ 4,000 rpm							
VQ35DE – 3.5-liter DOHC 24-valve V6						■	■
—Horsepower – 270 hp @ 6,400 rpm							
—Torque – 251 lb-ft @ 4,400 rpm							
Continuously Variable Valve Timing Control System (CVTCS)	■	■	■	■	■	■	■
Variable induction system	■	■	■	■	■	■	■
Nissan Direct Ignition System	■	■	■	■	■	■	■
Electronic drive-by-wire throttle	■	■	■	■	■	■	■

Drivetrain	2.5	2.5 S	2.5 SR	2.5 SV	2.5 SL	3.5 SR	3.5 SL
Front engine/Front-Wheel Drive	■	■	■	■	■	■	■
Xtronic CVT® (Continuously Variable Transmission)	■	■	■	■	■	■	■
Paddle shifters and manual shift mode			■			■	

Brakes	2.5	2.5 S	2.5 SR	2.5 SV	2.5 SL	3.5 SR	3.5 SL
11.7" Front vented disc/11.5" rear disc brakes	■	■	■	■	■	■	■
4-wheel Anti-lock Braking System (ABS) with Electronic Brake force Distribution (EBD)	■	■	■	■	■	■	■
Forward Emergency Braking (FEB)					T1		T2

Suspension/Steering	2.5	2.5 S	2.5 SR	2.5 SV	2.5 SL	3.5 SR	3.5 SL
Independent strut front suspension	■	■	■	■	■	■	■
Multi-link independent rear suspension	■	■	■	■	■	■	■
Front and rear stabilizer bars	■	■	■	■	■	■	■
Sport-tuned suspension – retuned dampers, stiffer springs and larger stabilizer bars			■			■	

Wheels/Tires	2.5	2.5 S	2.5 SR	2.5 SV	2.5 SL	3.5 SR	3.5 SL
16" x 7.0" steel wheels with wheel covers	■	■					
17" x 7.5" aluminum-alloy wheels					■		
18" x 7.5" aluminum-alloy wheels			■			■	■
P215/60TR16 All-season tires	■	■					
P215/55VR17 All-season tires				■	■		
P235/45VR18 All-season tires						■	■

Exterior Features	2.5	2.5 S	2.5 SR	2.5 SV	2.5 SL	3.5 SR	3.5 SL
Smart Auto Headlights		■	■	■	■	■	■
Projector-type halogen headlights	■	■					
LED headlights with integrated signature			L		T1	■	■
Smoked headlights					T1		
Daytime Running Lights (DRL) and fog lights			■	■	■	■	■
Sport spoiler						■	
Dual chrome exhaust finishers	■	■	■	■	■	■	■
Dual body-color power outside mirrors	■	■	■	■	■	■	■
Manual folding outside mirrors with LED turn signal indicators			C		■	■	
Heated outside mirrors				W	■	■	
Power sliding glass moonroof			C		M	■	
Front and Rear Sonar System							■

■ Standard
 □ Optional
 W Part of Cold Weather Package
 P Part of Power Driver's Seat Package
 N Part of Navigation Package
 C Part of Convenience Package

Comfort/Convenience	2.5	2.5 S	2.5 SR	2.5 SV	2.5 SL	3.5 SR	3.5 SL
Advanced Drive-Assist® Display ^{1,2}	■	■	■	■	■	■	■
NissanConnect SM with Navigation and Mobile Apps, including 7.0" color touch-screen monitor ³				N	T1	■	
SiriusXM® Traffic and Travel Link ^{*4}				N	T1	■	
NissanConnect SM Services powered by SiriusXM ^{*5}					T1	T2	
Nissan Voice Recognition for navigation and audio ⁶				N	T1	■	
Siri® Eyes Free ⁷		■	■	■	■	■	■
RearView Monitor ⁸		■	■	■	■	■	■
Hands-free text messaging assistant ⁹		■	■	■	■	■	■
Bluetooth® Hands-free Phone System ¹⁰	■	■	■	■	■	■	■
HomeLink® Universal Transceiver				C	■	■	
Air conditioning	■	■	■			■	
Dual Zone Automatic Temperature Control (ATC)				■	■	■	■
In-cabin microfilter				■	■	■	■
Rear passenger air conditioning vents				C	■	■	
Power windows with one-touch driver-side auto-up/down with auto-reverse	■	■	■		■	■	■
Passenger-side front-window one-touch auto-up/down with auto-reverse				C	■	■	
Power door locks with auto-locking feature	■	■	■	■	■	■	■
Remote keyless entry	■	■	■	■	■	■	■
Nissan Intelligent Key®	■	■	■	■	■	■	■
Push Button Ignition and remote trunk release	■	■	■	■	■	■	■
Remote Engine Start System ¹¹ with Intelligent Climate Control				■	■	■	■
Cruise control with steering wheel-mounted controls	■	■	■	■	■	■	■
Intelligent Cruise Control (ICC) ¹²					T1	T2	
Tilt and telescoping steering column	■	■	■	■	■	■	■
Sun visors with vanity mirrors		■	■			■	■
Sun visors with illuminated vanity mirrors and extensions		■	■			■	■
Auto-dimming inside rearview mirror				C	■	■	■
Digital compass				C	■	■	■
LED map lights and rear reading lights	■	■	■	■	■	■	■
Mood lighting				C	■	■	■
Front/rear door map pockets with bottle holders	■	■	■	■	■	■	■
12-volt DC power outlets (two)	■	■	■	■	■	■	■

Seating/Appointments	2.5	2.5 S	2.5 SR	2.5 SV	2.5 SL	3.5 SR	3.5 SL
6-way manual adjustable driver's seat	■	■					
6-way power adjustable driver's seat		P					
8-way power adjustable driver's seat			■	■	■	■	■
2-way driver's power lumbar support			■	■	■	■	■
4-way power adjustable front-passenger's seat			■	■	■	■	■
Cloth seat trim			■	■	■	■	■
Leather-appointed seats					■	■	■
Heated front seats and steering wheel				W	■	■	■
Leather-wrapped steering wheel				■	■	■	■
Leather-wrapped shift knob			■	■	■	■	■
Premium interior trim			■	■	■	■	■
60/40 Split fold-down rear seatbacks	■	■	■	■	■	■	■
Carpeted trunk lid trim	■	■	■	■	■	■	■

L Part of LED Appearance Package
 M Part of Moonroof Package
 T1 Part of Technology Package (2.5 SL)
 T2 Part of Technology Package (3.5 SL)

Audio/Entertainment	2.5	2.5 S	2.5 SR	2.5 SV	2.5 SL	3.5 SR	3.5 SL
AM/FM/CD audio system with four speakers	■	■	■	■	■	■	■
AM/FM/CD audio system with 5.0" color monitor		■	■	■	■	■	■
AM/FM/CD audio system with 7.0" color monitor				N	T1	■	■
Illuminated steering wheel-mounted audio controls	■	■	■	■	■	■	■
Six speakers				■	■	■	■
Nine-speaker Bose® Premium Audio System					■	■	■
Speed-sensitive volume control	■	■	■	■	■	■	■
Illuminated USB connection port for iPod® interface or other compatible devices ¹³	■	■	■	■	■	■	■
SiriusXM® Satellite Radio ⁴				■	■	■	■
Streaming audio via Bluetooth® wireless technology ¹⁰	■	■	■	■	■	■	■

Safety/Security	2.5	2.5 S	2.5 SR	2.5 SV	2.5 SL	3.5 SR	3.5 SL
Nissan Advanced Air Bag System with dual-stage supplemental front air bags with seat belt and occupant-classification sensors	■	■	■	■	■	■	■
Driver and front-passenger seat-mounted side-impact supplemental air bags				■	■	■	■
Roof-mounted curtain supplemental air bags for side-impact and rollover head protection for front and rear-seat outboard occupants	■	■	■	■	■	■	■
Vehicle Dynamic Control (VDC) with Traction Control System (TCS)	■	■	■	■	■	■	■
Predictive Forward Collision Warning (PFCW)					T1	T2	
Forward Emergency Braking (FEB)					T1	T2	
Blind Spot Warning (BSW)				■	■	■	■
Rear Cross Traffic Alert (RCTA)				■	■	■	■
3-point ALR/ELR passenger seat belt system (ELR for driver)	■	■	■	■	■	■	■
LATCH System (Lower Anchors and Tethers for Children)	■	■	■	■	■	■	■
Tire Pressure Monitoring System (TPMS) with Easy-Fill Tire Alert	■	■	■	■	■	■	■
Tire Pressure Monitoring System (TPMS) with individual tire pressure display and Easy-Fill Tire Alert				■	■	■	■
Vehicle Security System	■	■	■	■	■	■	■

¹Driving is serious business and requires your full attention. If you have to use the feature while driving, exercise extreme caution at all times so full attention may be given to vehicle operation. ²Information displayed is dependent on how vehicle is equipped. ³Driving is serious business. Only use features when safe to do so. App availability is dependent upon vehicle model, trim level, packaging, and/or options. See [NissanUSA.com/connect](#) for complete app availability details. Never program while driving. GPS mapping may not be detailed in all areas or reflect current road status. Compatible smartphone required. Cellular network and GPS signals not available in all areas and/or at all times. Technology is evolving, and changes by independent companies are not within Nissan's control. Nissan is not responsible for associated costs that may be required for continued operation due to cellular network termination (including equipment upgrades, if available, or roaming charges on alternative networks) or other third party changes. Should a third party provider terminate/restrict service, service may be terminated without notice and with no liability to Nissan and its agents or affiliates. Subscription Agreement required and terms and conditions of Subscription Agreement apply. See [NissanUSA.com/connect](#) for details. Text rates and/or data usage may apply. ⁴Required monthly subscriptions sold separately for each available SiriusXM feature after trial period, and are continuous until you call SiriusXM to cancel. Installation costs, one-time activation fee, other fees and taxes will apply. Each SiriusXM feature availability is dependent upon vehicle model, trim level, packaging, and/or options, and may only be available in select markets. Satellite Radio U.S. service, NavWeather® service, and SiriusXM Travel Link® services (if any of the foregoing features are equipped on vehicle) available only to those 18 or older in the 48 contiguous states and D.C. Fees and programming subject to change. Subscriptions governed by Customer Agreement available at [siriusxm.com](#). ©2016 Sirius XM Radio Inc. Siri® XM® and all related marks and logos are trademarks of Sirius XM Radio Inc. ⁵Driving is serious business. Only use NissanConnectSM Services powered by SiriusXM® when safe to do so. Late availability for some features. Services, including automatic crash notification and SOS, are dependent upon the telematics device being in operative condition, its ability to connect to a wireless network, compatible wireless network availability, navigation map data, and GPS satellite signal receptions, the absence of which can limit or prevent the ability to reach NissanConnect Services Customer Care or receive support. Never program while driving. GPS mapping may not be detailed in all areas or reflect current road status. You are responsible for using Remote Engine Start and Remote Horn features in accordance with any laws, rules or ordinances in effect in your vehicle's location. Remote Engine Start/Stop not available on all models. Cellular network not available in all areas and/or at all times. Cellular technology is evolving

DIMENSIONS/CAPACITIES/WEIGHTS/MPG

Exterior Dimensions – Inches			
Wheelbase	109.3	Overall width	72.0
		Overall length	191.9

Interior Dimensions – Inches (front/rear)			
Head room without moonroof	40.0/37.1	Leg room	45.0/36.1
	with moonroof	Hip room	54.0/52.1
Shoulder room	56.4/56.4		

Capacities			
Seating capacity	5		
Interior passenger volume (cu. ft.)		Cargo volume (cu. ft.)	15.4
	without moonroof	Fuel tank (gals.)	18.0
	with moonroof		

2016 EPA Fuel Economy Estimates			
City/Hwy/Combined MPG	27/39/31 (4-cyl)	26/37/30 (4-cyl SR)	22/32/26 (V6)

Fuel economy based on targeted 2017 EPA fuel economy estimates for 2017 Altima – EPA data not available at time of publication. Targeted 2017 fuel economy estimates (27 city MPG/39 hwy MPG/31 combined MPG for 2017 Altima 2.5, 2.5 S, 2.5 SV, 2.5 SL trims) (26 city MPG/37 hwy MPG/30 combined MPG for 2017 Altima 2.5 SR trim) (22 city MPG/32 hwy MPG/26 combined MPG for 2017 Altima 3.5 SR & 3.5 SL trims) based on Nissan internal testing results, subject to EPA confirmation. Actual mileage may vary with driving conditions – use for comparison only.

and changes to cellular networks provided by independent companies are not within Nissan's or Sirius XM Radio Inc.'s control. Neither Nissan nor Sirius XM are responsible for associated costs that may be required for continued operation due to cellular network termination (including equipment upgrades, if available, or roaming charges on alternative networks). Should cellular provider terminate/restrict services, service may be terminated without notice and with no liability to Nissan, Sirius XM and/or their respective agents or affiliates. Certain services require a PIN for activation. See [NissanUSA.com/connect](#) for details. Enrollment and Subscription Agreement required to receive full suite of services. Terms and conditions of Subscription Agreement apply. Six (6) month trial period begins on your date of vehicle purchase or lease of a new Nissan; subsequently a paid subscription is required at the then current rate to continue to receive services. Text rates and/or data usage may apply. ⁶Never program while driving. GPS mapping may not be detailed in all areas or reflect current road status. ⁷Driving is serious business and requires your full attention. Only use feature when safe to do so. Compatible smartphone required. Availability of specific feature is dependent upon the phone's Bluetooth® support. Please refer to your phone Owner's Manual for details. Bluetooth® word mark and logos are owned by Bluetooth SIG, Inc. and any use of such marks by Nissan is under license. See [NissanUSA.com/bluetooth](#) for details. Text rates and/or data usage may apply. Certain services, including Siri®, are provided by independent companies not within Nissan's control. Should service provider terminate/restrict service, service may be suspended or terminated without notice or liability to Nissan and/or its agents. Nissan not responsible for any equipment replacement or upgrades, or associated costs, that may be required for continued operation due to service changes. Siri® Eyes Free is a registered trademark of Apple, Inc. ⁸Parking aid/convenience feature. Cannot completely eliminate blind spots. May not detect every object and does not warn of moving objects. Always check surroundings and turn to look behind you before moving vehicle. ⁹Use the text messaging feature after stopping your vehicle in a safe location. If you have to use the feature while driving, exercise extreme caution at all times so full attention may be given to vehicle operation. Compatible smartphone required. Text rates and/or data usage may apply. ¹⁰Availability of specific features is dependent upon the phone's Bluetooth® support. Please refer to your phone Owner's Manual for details. Bluetooth® word mark and logos are owned by Bluetooth SIG, Inc., and any use of such marks by Nissan is under license. See [NissanUSA.com/bluetooth](#) for details. ¹¹State laws may apply; review local laws before using. ¹²Intelligent Cruise Control is not a collision avoidance system or warning device. Designed to use limited braking. Failure to apply the brakes could result in an accident. ¹³Driving is serious business and requires your full attention. If you have to use the connected device while driving, exercise extreme caution at all times so full attention may be given to vehicle operation. HomeLink® is a registered trademark of Genex Corporation. Bose® is a registered trademark of The Bose Corporation. iPod® is a registered trademark of Apple, Inc. All rights reserved. iPod® or other external device not included. This brochure is intended for general descriptive and informational purposes only. It is subject to change and does not constitute an offer, representation or warranty (express or implied) by Nissan North America, Inc. Interested parties should confirm the accuracy of any information in this brochure as it relates to a vehicle directly with Nissan North America, Inc. before relying on it to make a purchase decision. Nissan North America, Inc. reserves the right to make changes, at any time, without prior notice, in prices, colors, materials, equipment, specifications, and models and to discontinue models or equipment. Due to continuous product development and other pre- and post-production factors, actual vehicle, materials and specifications may vary from this brochure. Some vehicles shown with optional equipment. See the actual vehicle for complete accuracy. Availability and delivery times for particular models or equipment may vary. Specifications, options and accessories may differ in Hawaii, U.S. territories and other countries. For additional information on availability, options or accessories, see your Nissan dealer or contact Nissan North America, Inc. At [NissanUSA.com](#), you'll find virtual product demonstrations, a way to "build your own Nissan," a dealer locator, and more information about key Nissan support services. Or if you'd prefer, call **1-800-NISSAN-3** for answers to specific questions about Altima® or any other Nissan vehicle. The Nissan names, logos, product names, feature names, and slogans are trademarks owned by or licensed to Nissan Motor Co. Ltd. and/or its North American subsidiaries. Other trademarks and trade names are those of their respective owners. **Always wear your seat belt, and please don't drink and drive.** ©2016 Nissan North America, Inc. 1719191-N-07/16-100M-CGI