

NISSAN INTELLIGENT MOBILITY™

Nissan Intelligent Mobility guides everything we do. We're using new technologies to transform cars from mere driving machines into assistants. Together the journey is more confident, connected, and exciting. Whether it's cars that assist in the driving task, or highways that charge your EV as you go along, it's all in the very near future. And it's a future already taking shape in the Nissan you drive today.

SEE ALTIMA® COME TO LIFE

Go to NissanUSA.com and find an interactive brochure for Altima® and every Nissan in the lineup. Available on desktop or smartphone, it's the full product story - including demos, videos, and complete info on trims, colors, and accessories.

Or download the Interactive Brochure Hub app on your tablet.
Free on the App Store® and Google Play.™



Innovation
that excites

2018
ALTIMA®



NISSAN ROADSIDE ASSISTANCE

Your peace of mind is on us. For 36 months or 36,000 miles, whichever comes first, your new Nissan is covered for the following:¹

- Flat-tire changes
- Trip Interruption benefits
- Jump starts
- Vehicle lockouts
- Emergency fuel delivery

Follow Nissan on:



visit NissanUSA.com/altima

¹Available services/features may be shown. Compatible connected device may be required. Only use services/features and device when safe and legal to do so. Subject to GPS and wireless network availability and connection, and system/technology limitations. Text rates/data usage/subscription may apply. Some services/features provided by companies not within Nissan or its partners' or agents' control and may be discontinued at any time. For more information, see dealer, Owner's Manual, or NissanUSA.com/connect/important-information. The App Store® logo is a registered trademark of Apple, Inc. All rights reserved. Facebook® is a registered trademark of Facebook, Inc. Google Play™ is a trademark of Google, Inc. Twitter® is a registered trademark of Twitter, Inc. YouTube® is a registered trademark of Google Inc.



TAKE ON THE STATUS QUO. Accelerate your pulse with a look that's aggressive and strong. Own the road with dynamic performance at your command. Inside, you'll find everything you could ever want, along with a true sense of connection to what's possible. The 2018 Nissan Altima® **TAKE ON TODAY.**

See Altima® in action at:
bit.ly/18altimavideo

Nissan Altima® 2.5 SR shown in Scarlet Ember.



Nissan Altima® 3.5 SL shown in Beige Leather.

38
MPG HIGHWAY¹

POWERFUL YET EFFICIENT

A roomy sedan that gets up to 38 MPG highway is smart! Combining a punchy 4-cylinder engine, or available powerful V6 engine, and a responsive Xtronic CVT® (Continuously Variable Transmission) – that’s brilliant.

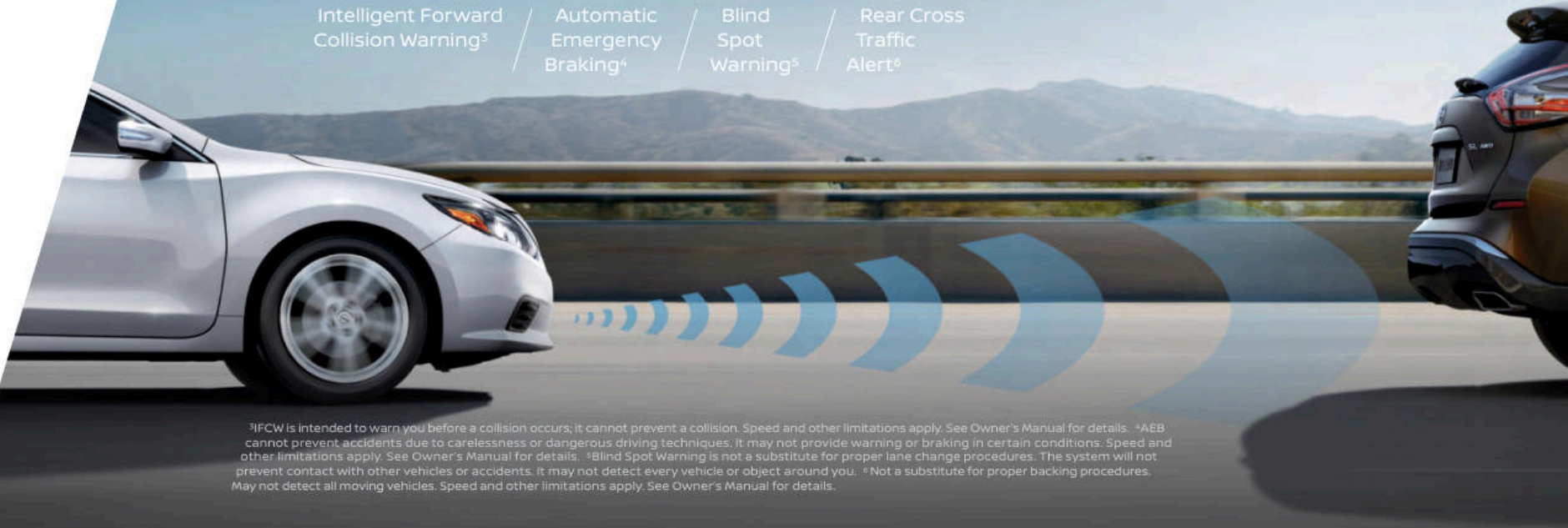
Xtronic CVT / 179-hp, 4-cylinder engine / Wind-cheating aerodynamics

¹2018 EPA Fuel Economy Estimates 27 city / 38 highway / 31 combined for Altima® 2.5 S, 2.5 SV, 2.5 SL. Actual mileage may vary with driving conditions – use for comparison only.

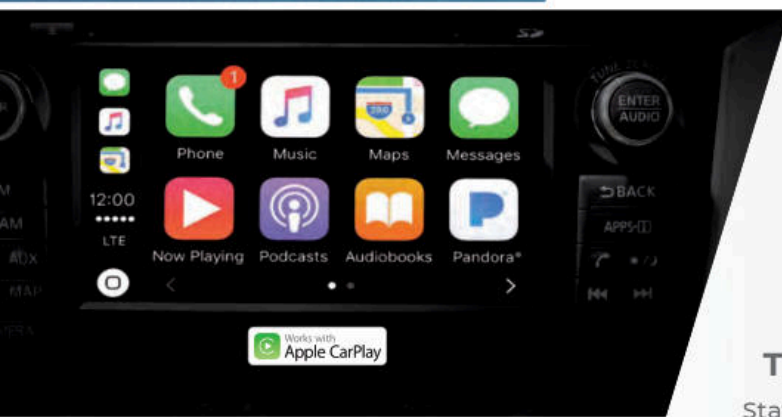
ADVANCED DRIVER TECHNOLOGIES

Whether you’re changing lanes on the highway or deftly maneuvering your way out of a parking spot, Altima’s available Nissan Intelligent Mobility features use an array of radar-based sensors to act as a second set of eyes, giving you a whole new way to double-check.

- Intelligent Forward Collision Warning³
- Automatic Emergency Braking⁴
- Blind Spot Warning⁵
- Rear Cross Traffic Alert⁶

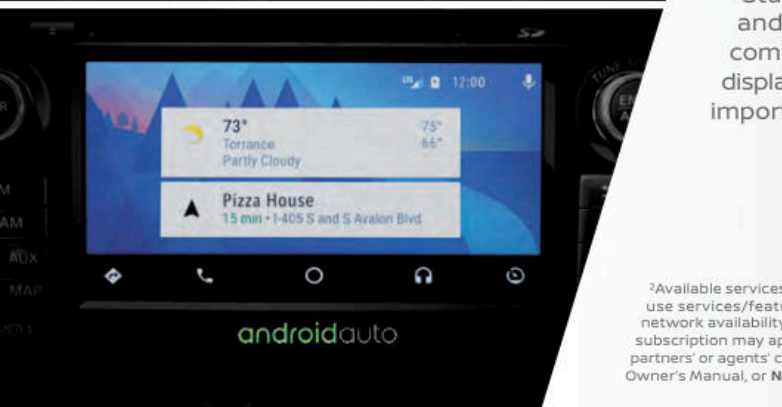


³IFCW is intended to warn you before a collision occurs; it cannot prevent a collision. Speed and other limitations apply. See Owner’s Manual for details. ⁴AEB cannot prevent accidents due to carelessness or dangerous driving techniques; it may not provide warning or braking in certain conditions. Speed and other limitations apply. See Owner’s Manual for details. ⁵Blind Spot Warning is not a substitute for proper lane change procedures. The system will not prevent contact with other vehicles or accidents. It may not detect every vehicle or object around you. ⁶Not a substitute for proper backing procedures. May not detect all moving vehicles. Speed and other limitations apply. See Owner’s Manual for details.



THE WORLD AT YOUR FINGERTIPS

Staying connected has never been easier. Apple CarPlay™ and Android Auto™ take the things you want to do with your compatible smartphone and put them right on the 7.0" color display. Combined with the NissanConnect® system, everything important to you is right within reach.²



²Available services/features may be shown. Compatible connected device may be required. Only use services/features and device when safe and legal to do so. Subject to GPS and wireless network availability and connection, and system/technology limitations. Text rates/data usage/subscription may apply. Some services/features provided by companies not within Nissan or its partners' or agents' control and may be discontinued at any time. For more information, see dealer, Owner's Manual, or NissanUSA.com/connect/important-information.

MEET THE ALTIMA® SR SPECIAL EDITION

From its sport-tuned suspension to its steering wheel-mounted paddle shifters, it’s clear: The Altima SR Special Edition is about much more than turning heads. It’s about delivering a thrilling driving experience. Of course, with unique gunmetal-finished, 18" alloy wheels, rear sport spoiler, and distinctive Prima-Tex™-appointed seats, its eye-catching looks are still impossible to ignore.

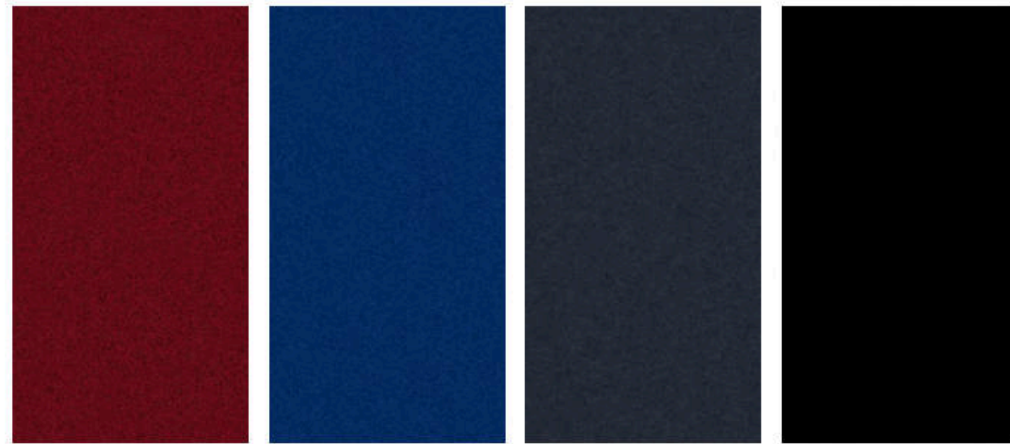


CHOOSE YOUR COLOR



Glacier White QAK
 Pearl White¹ QAB
 Brilliant Silver K23
 Gun Metallic KAD

	2.5 S	2.5 SV	2.5 SR	2.5 SL	3.5 SL
BEIGE CLOTH					
CHARCOAL CLOTH	■				
CHARCOAL SPORT CLOTH					
CHARCOAL SPORT PRIMA-TEX™					
BEIGE LEATHER					
CHARCOAL LEATHER					



Scarlet Ember¹ NBL
 Deep Blue Pearl RAY
 Storm Blue RBD
 Super Black KH3

	2.5 S	2.5 SV	2.5 SR	2.5 SL	3.5 SL
BEIGE CLOTH					
CHARCOAL CLOTH	■	■			
CHARCOAL SPORT CLOTH					
CHARCOAL SPORT PRIMA-TEX™					
BEIGE LEATHER					
CHARCOAL LEATHER					

■ Standard

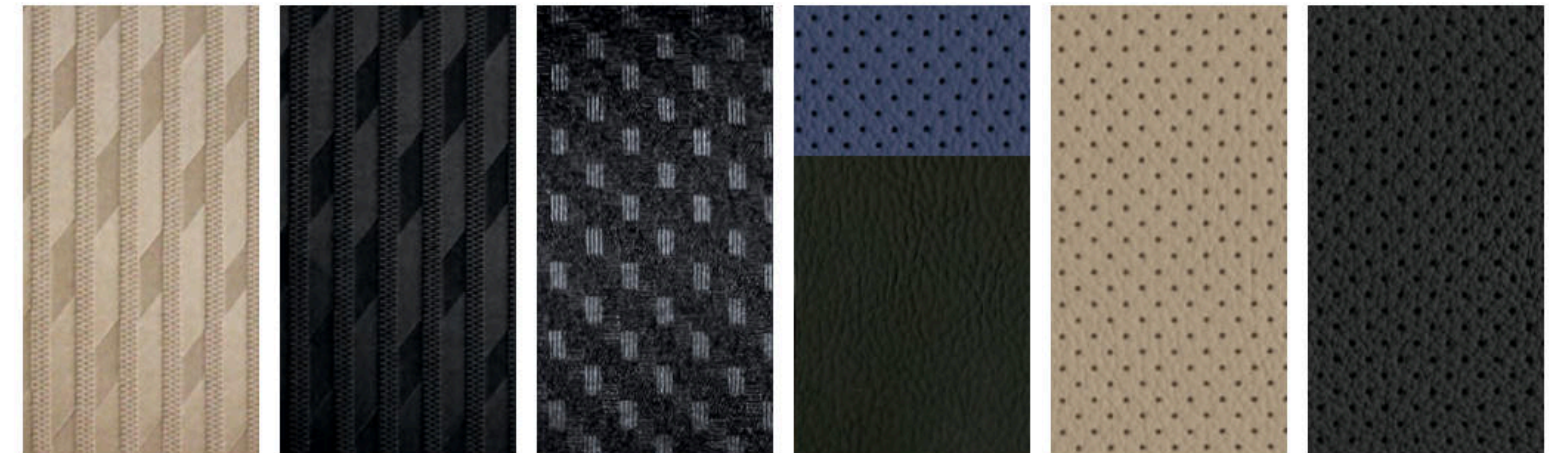
¹Extra cost option.

Nissan has taken care to ensure that the color swatches presented here are the closest possible representations of actual vehicle colors. Swatches may vary slightly due to the printing process and whether viewed in daylight, fluorescent or incandescent light. Please see the actual colors at your local Nissan dealer.

CHOOSE YOUR INTERIOR



Nissan Altima® 3.5 SL shown in Charcoal Leather.



Beige Cloth 2.5 SV
 Charcoal Cloth 2.5 S | 2.5 SV
 Charcoal Sport Cloth 2.5 SR
 Charcoal Sport Prima-Tex™ SR SPECIAL EDITION
 Beige Leather 2.5 SL | 3.5 SL
 Charcoal Leather 2.5 SL | 3.5 SL

CHOOSE YOUR TRIM LEVEL AND PACKAGE

4-CYLINDER ENGINE

2.5 S

2.5-liter 4-cylinder engine, USB port,¹ Siri® Eyes Free,² Hands-free Text Messaging Assistant,³ RearView Monitor,⁴ AM/FM/CD audio system with 5.0" color monitor, cruise control with steering wheel-mounted controls, air conditioning with in-cabin microfilter, sun visors with illuminated vanity mirrors and extensions, Nissan Intelligent Key® with Push Button Ignition, Intelligent Forward Collision Warning,⁵ Automatic Emergency Braking,⁶ Tire Pressure Monitoring System (TPMS) with individual tire pressure display and Easy-Fill Tire Alert,^{7,8} Intelligent Auto Headlights



2.5 SR

INCLUDES 2.5 S EQUIPMENT PLUS:

18" Machine-finished wheels, sport-tuned suspension, sport spoiler, smoked headlight housing, smoked taillight housing, fog lights, paddle shifters and manual shift mode, leather-wrapped steering wheel, leather-wrapped shift knob, unique sport interior accents, 8-way power driver's seat, 2-way driver's power lumbar support



SR SPECIAL EDITION

INCLUDES 2.5 SR EQUIPMENT PLUS:

Remote Engine Start System,⁹ SiriusXM® Satellite Radio with 3-month complimentary trial access,² Sport Prima-Tex™-appointed seats, heated front seats, 18" gunmetal aluminum-alloy wheels, NissanConnect® features: Nissan Navigation System,¹⁰ Apple CarPlay,^{11,12} Android Auto,^{13,14} 7.0" multi-touch control color monitor, SiriusXM® Traffic and Travel Link,² Nissan Voice Recognition for audio and navigation¹⁰



2.5 SV

INCLUDES 2.5 S EQUIPMENT PLUS:

17" Aluminum-alloy wheels, Dual Zone Automatic Temperature Control, Remote Engine Start System with Intelligent Climate Control,⁹ Rear Cross Traffic Alert,¹¹ Blind Spot Warning,¹² SiriusXM® Satellite Radio,² leather-wrapped steering wheel, fog lights, 8-way power driver's seat, 2-way driver's power lumbar support



2.5 SL

INCLUDES 2.5 SV EQUIPMENT PLUS:

Bose® Premium Audio System with 9 speakers, heated front seats, 4-way power front passenger's seat, leather-appointed seats, leather-wrapped shift knob, premium interior trim, rear passenger air conditioning vents, HomeLink® Universal Transceiver, auto-dimming inside rearview mirror with digital compass, passenger-side front-window one-touch auto-up/down with auto-reverse, manual folding outside mirrors with LED turn indicators, heated steering wheel, heated outside mirrors



V6 ENGINE

3.5 SL

INCLUDES 2.5 SL EQUIPMENT PLUS:

3.5-L V6 engine with 270 horsepower and 251 lb-ft of torque, 18" aluminum-alloy wheels, LED headlights with signature, smoked headlight housing, Intelligent Cruise Control,¹³ Front and Rear Sonar System,¹⁴ power sliding moonroof with tilt feature, NissanConnect® features: Nissan Navigation System,¹⁰ Apple CarPlay,^{11,12} Android Auto,^{13,14} 7.0" multi-touch control color monitor, SiriusXM® Traffic and Travel Link,² NissanConnect® Services powered by SiriusXM,² Nissan Voice Recognition for navigation and audio¹⁰



2.5 S

CONVENIENCE PACKAGE

6-way power driver's seat, Remote Engine Start System⁹

2.5 SV

TECHNOLOGY PACKAGE

Heated front seats, Heated outside mirrors, Heated steering wheel, Rear passenger air conditioning vents, Power sliding glass moonroof with one-touch open/close and tilt feature, Manual folding outside mirrors with LED turn signal indicators, Passenger-side front-window one-touch auto-up/down with auto-reverse, Auto-dimming inside rearview mirror, HomeLink® Universal Transceiver, Digital compass, Mood lighting, NissanConnect® features: Nissan Navigation System,¹⁰ Apple CarPlay,^{11,12} Android Auto,^{13,14} 7.0" multi-touch control color monitor, SiriusXM® Traffic and Travel Link,² Nissan Voice Recognition for audio and navigation¹⁰

2.5 SL

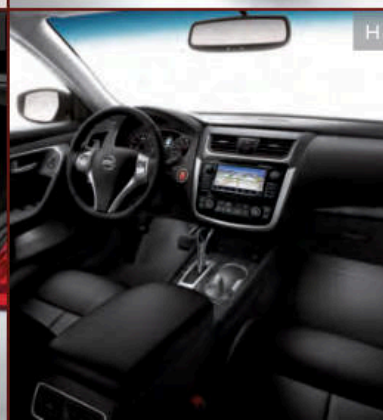
TECHNOLOGY PACKAGE

LED headlights with signature, Smoked headlight housing, Power sliding glass moonroof with one-touch open/close and tilt feature, NissanConnect® features: Nissan Navigation System,¹⁰ Apple CarPlay,^{11,12} Android Auto,^{13,14} NissanConnect® Services powered by SiriusXM,² 7.0" multi-touch control color monitor, SiriusXM® Traffic and Travel Link,² Nissan Voice Recognition for audio and navigation¹⁰

Images may show additional available equipment. ¹Driving is serious business and requires your full attention. If you have to use the connected device while driving, exercise extreme caution at all times so full attention may be given to vehicle operation. External device not included. ²Available services/features may be shown. Compatible connected device may be required. Only use services/features and device when safe and legal to do so. Subject to GPS and wireless network availability and connection, and system/technology limitations. Text rates/data usage/subscription may apply. Some services/features provided by companies not within Nissan or its partners' or agents' control and may be discontinued at any time. For more information, see dealer, Owner's Manual, or NissanUSA.com/connect/important-information. ³Use the Text Messaging feature after stopping your vehicle in a safe location. If you have to use the feature while driving, exercise extreme caution at all times so full attention may be given to vehicle operation. Compatible smartphone required. Text rates and/or data usage may apply. ⁴Parking aid/convenience feature. Cannot completely eliminate blind spots. May not detect every object and does not warn of moving objects. Always check surroundings and turn to look behind you before moving vehicle. ⁵IFCW is intended to warn you before a collision occurs; it cannot prevent a collision. Speed and other limitations apply. See Owner's Manual for details. ⁶AEB cannot prevent accidents due to carelessness or dangerous driving techniques. It

may not provide warning or braking in certain conditions. Speed and other limitations apply. See Owner's Manual for details. ⁷TPMS is not a substitute for regular tire pressure checks. ⁸Vehicle must be on for the Easy-Fill Tire Alert to operate. ⁹State and local laws, regulations or ordinances may apply based on the location of the vehicle. ¹⁰Never program while driving. GPS mapping may not be detailed in all areas or reflect current road status. ¹¹Not a substitute for proper backing procedures. May not detect all moving vehicles. Speed and other limitations apply. See Owner's Manual for details. ¹²Blind Spot Warning is not a substitute for proper lane change procedures. The system will not prevent contact with other vehicles or accidents. It may not detect every vehicle or object around you. ¹³Intelligent Cruise Control is not a collision avoidance system or warning device. Designed to use limited braking. Failure to apply the brakes could result in an accident. ¹⁴The Sonar System is a convenience, not a substitute for proper parking and/or backing procedures. Always check that it is safe to do so before moving vehicle. May not detect every object. Android Auto™ is a trademark of Google, Inc. Apple CarPlay™ is a trademark of Apple, Inc. Bose® is a registered trademark of The Bose Corporation. HomeLink® is a registered trademark of Gentex Corporation. Siri® and Siri® Eyes Free are registered trademarks of Apple, Inc. The Sirius®, XM®, and SiriusXM® names and all related marks and logos are trademarks of Sirius XM Radio Inc. All other trademarks are the property of their respective owners.

CHOOSE YOUR ACCESSORIES



Every Genuine Nissan Accessory is custom-fit, custom-designed and durability-tested. Each one is also backed by Nissan's 3-year/36,000-mile (whichever occurs first) limited warranty (if installed by dealer at the time of purchase).¹ Ask your dealer whether a specific Genuine Nissan Accessory may be financed when installed by the dealer at the time of purchase.

- A. Chrome Rear Bumper Protector**
Proof that the best defense is great style.
- B. Nissan WiFi & Apps²**
Get on the road and online.
- C. Wireless Smartphone Charger**
Power up without the pesky cords.
- D. All-season Floor Mats**
Skip the mud – and other messes.
- E. Illuminated Kick Plates**
Fewer scuffs and a grand entry, every time.
- F. Remote Engine Start System³**
Get a head start on your next road trip.
- G. Cargo Organizer⁴**
Bring some order to your cargo area.
- H. Interior Accent Lighting**
Add a warm glow to the mood.

Additional Accessories:

- Dual Rear USB Charging Ports^{5, 6}
- Body Side Moldings
- Carpeted Floor Mats
- Carpeted Trunk Mat
- Sport Carpeted Floor Mats
- Trunk Protector⁴
- Hideaway Trunk Net Kit
- Trunk Sub-floor Organizer
- Clear Rear Bumper Protector
- And More

GENUINE NISSAN ACCESSORIES

TURN BRAND-NEW INTO ALL YOU

For more information and to shop online for Altima® Genuine Nissan Accessories, go to bit.ly/18altima-estore



Nissan Altima® 3.5 SL shown in Scarlet Ember with LED Fog Lights Upgrade Kit, Moonroof Wind Deflector, Splash Guards, Chrome Body Side Moldings, External Ground Lighting, and Rear Decklid Spoiler.

¹Covered by Nissan's Limited Warranty on Genuine Nissan Replacement Parts, Genuine NISMO® S-Tune Parts, and Genuine Nissan Accessories for the longer of 12 months/12,000 miles (whichever occurs first) or the remaining period under the 3-year/36,000-mile (whichever occurs first) Nissan New Vehicle Limited Warranty. Terms and conditions apply. See Warranty Information Booklet for details. ²Available services/features may be shown. Compatible connected device may be required. Only use services/

features and device when safe and legal to do so. Subject to GPS and wireless network availability and connection, and system/technology limitations. Text rates/data usage/subscription may apply. Some services/features provided by companies not within Nissan or its partners' or agents' control and may be discontinued at any time. For more information, see dealer, Owner's Manual, or NissanUSA.com/connect/important-information. ³State and local laws, regulations or ordinances may apply based on the location of the vehicle. ⁴Cargo and load capacity limited by weight and distribution. Always secure all cargo. ⁵Driving is serious business and requires your full attention. If you have to use the connected device while driving, exercise extreme caution at all times so full attention may be given to vehicle operation. External device not included. ⁶Late availability.

SPECIFICATIONS

Engine	2.5 S	2.5 SR	SR Sp Ed	2.5 SV	2.5 SL	3.5 SL
2.5-liter DOHC 16-valve 4-cylinder	■	■	■	■	■	
—Horsepower – 179 hp @ 6,000 rpm						
—Torque – 177 lb-ft @ 4,000 rpm						
3.5-liter DOHC 24-valve V6						■
—Horsepower – 270 hp @ 6,400 rpm						
—Torque – 251 lb-ft @ 4,400 rpm						
Continuously Variable Valve Timing Control System (CVTCS)	■	■	■	■	■	■
Variable induction system	■	■	■	■	■	■
Nissan Direct Ignition System	■	■	■	■	■	■
Electronic drive-by-wire throttle	■	■	■	■	■	■

Drivetrain	2.5 S	2.5 SR	SR Sp Ed	2.5 SV	2.5 SL	3.5 SL
Front engine/Front-Wheel Drive	■	■	■	■	■	■
Xtronic CVT® (Continuously Variable Transmission)	■	■	■	■	■	■
Paddle shifters and manual shift mode		■	■			■

Brakes	2.5 S	2.5 SR	SR Sp Ed	2.5 SV	2.5 SL	3.5 SL
11.7" Front vented disc/11.5" rear disc brakes	■	■	■	■	■	■
4-wheel Anti-lock Braking System (ABS) with Electronic Brake force Distribution (EBD)	■	■	■	■	■	■

Suspension/Steering	2.5 S	2.5 SR	SR Sp Ed	2.5 SV	2.5 SL	3.5 SL
Independent strut front suspension	■	■	■	■	■	■
Multi-link independent rear suspension	■	■	■	■	■	■
Front and rear stabilizer bars	■	■	■	■	■	■
Sport-tuned suspension – retuned dampers, stiffer springs and larger stabilizer bars		■	■			

Wheels/Tires	2.5 S	2.5 SR	SR Sp Ed	2.5 SV	2.5 SL	3.5 SL
16" x 7.0" steel wheels with wheel covers	■					
17" x 7.5" machine-finished aluminum-alloy wheels					■	■
18" x 7.5" machine-finished aluminum-alloy wheels		■				
18" x 7.5" gunmetal aluminum-alloy wheels			■			
18" x 7.5" aluminum-alloy wheels						■
P215/60TR16 all-season tires	■					
P215/55VR17 all-season tires					■	■
P235/45VR18 all-season tires		■	■			■

Exterior Features	2.5 S	2.5 SR	SR Sp Ed	2.5 SV	2.5 SL	3.5 SL
Intelligent Auto Headlights	■	■	■	■	■	■
Projector-type halogen headlights	■	■	■	■	■	■
LED headlights with signature					T2	■
Smoked headlights					T2	■
Fog lights		■	■	■	■	■
Sport spoiler		■	■			
Dual chrome exhaust finishers	■	■	■	■	■	■
Dual body-color power outside mirrors	■	■	■	■	■	■
Manual folding outside mirrors with LED turn signal indicators					T1	■
Heated outside mirrors					T1	■
Power sliding glass moonroof					T1	T2
Front and Rear Sonar System						■

■ Standard
C Part of Convenience Package

T1 Part of Technology Package (2.5 SV)
T2 Part of Technology Package (2.5 SL)

Comfort/Convenience	2.5 S	2.5 SR	SR Sp Ed	2.5 SV	2.5 SL	3.5 SL
Advanced Drive-Assist® Display ^{1,2}	■	■	■	■	■	■
Nissan Navigation System ³				T1	T2	■
Apple CarPlay™ ⁴				T1	T2	■
Android Auto™ ⁴				T1	T2	■
7.0" multi-touch control color monitor				T1	T2	■
SiriusXM® Traffic and Travel Link with 3-month complimentary trial access ⁴				T1	T2	■
NissanConnect® Services powered by SiriusXM ^{6,4}					T2	■
Nissan Voice Recognition for navigation and audio ³	■	■	■	T1	T2	■
Siri® Eyes Free ⁴	■	■	■	■	■	■
RearView Monitor ⁵	■	■	■	■	■	■
Hands-free Text Messaging Assistant ⁶	■	■	■	■	■	■
Bluetooth® Hands-free Phone System ⁴	■	■	■	■	■	■
HomeLink® Universal Transceiver				T1	■	■
Air conditioning	■	■	■			
Dual Zone Automatic Temperature Control				■	■	■
In-cabin microfilter	■	■	■	■	■	■
Rear passenger air conditioning vents				T1	■	■
Power windows with one-touch driver-side auto-up/down with auto-reverse	■	■	■	■	■	■
Passenger-side front-window one-touch auto-up/down with auto-reverse				T1	■	■
Power door locks with auto-locking feature	■	■	■	■	■	■
Nissan Intelligent Key® with Push Button Ignition	■	■	■	■	■	■
Remote Engine Start System ⁷	C		■			
Remote Engine Start System with Intelligent Climate Control ⁷				■	■	■
Cruise control	■	■	■	■	■	■
Intelligent Cruise Control ⁸					T2	■
Tilt and telescoping steering column	■	■	■	■	■	■
Sun visors with illuminated vanity mirrors and extensions	■	■	■	■	■	■
Auto-dimming inside rearview mirror				T1	■	■
Digital compass				T1	■	■
LED map lights and rear reading lights	■	■	■	■	■	■
Mood lighting				T1	■	■
Front/rear door map pockets with bottle holders	■	■	■	■	■	■
Two 12-volt DC power outlets	■	■	■	■	■	■

Seating/Appointments	2.5 S	2.5 SR	SR Sp Ed	2.5 SV	2.5 SL	3.5 SL
6-way manual adjustable driver's seat	■					
8-way power adjustable driver's seat	C					
6-way power adjustable driver's seat		■	■	■	■	■
8-way power adjustable driver's seat		■	■	■	■	■
2-way driver's power lumbar support		■	■	■	■	■
4-way power adjustable front-passenger's seat					■	■
Cloth seat trim	■			■		
Sport Cloth seat trim		■				
Sport Prima-Tex™-appointed seats			■			
Leather-appointed seats					■	■
Heated front seats and steering wheel				T1	■	■
Leather-wrapped steering wheel		■	■	■	■	■
Leather-wrapped shift knob		■	■			
Sport interior trim						■
Premium interior trim						■
60/40 Split fold-down rear seatbacks	■	■	■	■	■	■
Carpeted trunk lid trim	■	■	■	■	■	■

Audio/Entertainment	2.5 S	2.5 SR	SR Sp Ed	2.5 SV	2.5 SL	3.5 SL
AM/FM/CD audio system with 5.0" color monitor	■	■		■	■	
AM/FM/CD audio system with 7.0" color monitor				T1	T2	■
Illuminated steering wheel-mounted audio controls	■	■	■	■	■	■
Six speakers	■	■	■	■	■	■
Nine-speaker Bose® Premium Audio System					■	■
Speed-sensitive volume control		■	■	■	■	■
USB port ⁹	■	■	■	■	■	■
SiriusXM® Satellite Radio with 3-month complimentary trial access ⁴				■	■	■
Streaming audio via Bluetooth® wireless technology ⁴	■	■	■	■	■	■

Safety/Security	2.5 S	2.5 SR	SR Sp Ed	2.5 SV	2.5 SL	3.5 SL
Nissan Advanced Air Bag System with dual-stage supplemental front air bags with seat belt and occupant-classification sensors ¹⁰	■	■	■	■	■	■
Driver and front-passenger seat-mounted side-impact supplemental air bags ¹⁰	■	■	■	■	■	■
Roof-mounted curtain supplemental air bags for side-impact and rollover head protection for front and rear-seat outboard occupants ¹⁰	■	■	■	■	■	■
Vehicle Dynamic Control (VDC) ¹¹ with Traction Control System (TCS)	■	■	■	■	■	■
Intelligent Forward Collision Warning ¹²	■	■	■	■	■	■
Automatic Emergency Braking ¹³	■	■	■	■	■	■
Blind Spot Warning ¹⁴				■	■	■
Rear Cross Traffic Alert ¹⁵				■	■	■
3-point ALR/ELR passenger seat belt system (ELR for driver)	■	■	■	■	■	■
LATCH System (Lower Anchors and Tethers for CHildren)	■	■	■	■	■	■
Tire Pressure Monitoring System (TPMS) with individual tire pressure display and Easy-Fill Tire Alert ^{16, 17}	■	■	■	■	■	■
Vehicle Security System	■	■	■	■	■	■

¹Driving is serious business and requires your full attention. If you have to use the feature while driving, exercise extreme caution at all times so full attention may be given to vehicle operation. ²Information displayed is dependent on how vehicle is equipped. ³Never program while driving. GPS mapping may not be detailed in all areas or reflect current road status. ⁴Available services/features may be shown. Compatible connected device may be required. Only use services/features and device when safe and legal to do so. Subject to GPS and wireless network availability and connection, and system/technology limitations. Text rates/data usage/subscription may apply. Some services/features provided by companies not within Nissan or its partners' or agents' control and may be discontinued at any time. For more information, see dealer, Owner's Manual, or NissanUSA.com/connect/important-information. ⁵Parking aid/convenience feature. Cannot completely eliminate blind spots. May not detect every object and does not warn of moving objects. Always check surroundings and turn to look behind you before moving vehicle. ⁶Use the Text Messaging feature after stopping your vehicle in a safe location. If you have to use the feature while driving, exercise extreme caution at all times so full attention may be given to vehicle operation. Compatible smartphone required. Text rates and/or data usage may apply. ⁷State and local laws, regulations or ordinances may apply based on the location of the vehicle. ⁸Intelligent Cruise Control is not a collision avoidance system or warning device. Designed to use limited braking. Failure to apply the brakes could result in an accident. ⁹Driving is serious business and requires your full attention. If you have to use the connected device while driving, exercise extreme caution at all times so full attention may be given to vehicle operation. External device not included. ¹⁰Air bags are only a supplemental restraint system; always wear your seat belt. Even with the occupant-classification sensor, rear-facing child restraints should not be placed in the front-passenger's seat. All children 12 and under should ride in the rear seat properly secured in child restraints, booster seats, or seat belts according to their size. Air bags will only inflate in certain accidents; see your Owner's Manual for more details. ¹¹VDC, which should remain on when driving except when freeing the vehicle from mud or snow, cannot prevent accidents due to abrupt steering, carelessness, or dangerous driving techniques. ¹²FCW is intended to warn you before a collision occurs; it cannot prevent a collision. Speed and other limitations apply. See Owner's Manual for details. ¹³AEB cannot prevent accidents due to carelessness or dangerous driving techniques. It may not provide warning or braking in certain conditions. Speed and other limitations apply. See Owner's Manual for details. ¹⁴BSW is not a substitute for proper lane change procedures. The system will not prevent contact with other vehicles or accidents. It may not detect every vehicle or object around you. ¹⁵Not a substitute for proper backing procedures. May not detect all moving vehicles. Speed and other limitations apply. See Owner's Manual for details. ¹⁶TPMS is not a substitute for regular tire pressure checks. ¹⁷Vehicle must be on for the Easy-Fill Tire Alert to operate. Android Auto™ is a trademark of Google, Inc. Apple CarPlay™ is a trademark of Apple Inc. Bluetooth® is a registered trademark of Bluetooth SIG, Inc. Bose® is a registered trademark of The Bose Corporation. HomeLink® is a registered trademark of Gentex Corporation. Siri® and Siri® Eyes Free are registered trademarks of Apple, Inc. The Sirius®, XM®, and SiriusXM® names and all related marks and logos are trademarks of Sirius XM Radio Inc. All other trademarks are the property of their respective owners. This brochure is intended for general descriptive and informational purposes only. It is subject to change and does not constitute an offer, representation or warranty (express or implied) by Nissan North America, Inc. Interested parties should confirm the accuracy of any information in this brochure as it relates to a vehicle directly with Nissan North America, Inc. before relying on it to make a purchase decision. Nissan North America, Inc. reserves the right to make changes, at any time, without prior notice, in prices, colors, materials, equipment, specifications, and models and to discontinue models or equipment. Due to continuous product development and other pre- and post-production factors, actual vehicle, materials and specifications may vary from this brochure. Some vehicles shown with optional equipment. See the actual vehicle for complete accuracy. Availability and delivery times for particular models or equipment may vary. Specifications, options and accessories may differ in Hawaii, U.S. territories and other countries. For additional information on availability, options or accessories, see your Nissan dealer or contact Nissan North America, Inc. At NissanUSA.com, you'll find virtual product demonstrations, a way to "build your own Nissan," a dealer locator, and more information about key Nissan support services. Or if you'd prefer, call 1-800-NISSAN-3 for answers to specific questions about Altima® or any other Nissan vehicle. The Nissan names, logos, product names, and slogans are trademarks owned by or licensed to Nissan Motor Co. Ltd. and/or its North American subsidiaries. Other trademarks and trade names are those of their respective owners. **Always wear your seat belt, and please drive responsibly.** ©2017 Nissan North America, Inc. ¹⁸Altima 1820682-N-9/17-80M-CGI

DIMENSIONS/CAPACITIES/WEIGHTS/MPG

Exterior Dimensions – Inches				
Wheelbase	109.3			
Overall width	72.0			
Overall length	191.9			
Overall height	2.5 S/2.5 SV	2.5 SR	2.5 SL/3.5 SR	
	57.8	58.0	57.9	

Interior Dimensions – Inches (front/rear)	
Head room without moonroof	40.0/37.1
with moonroof	39.1/37.1
Leg room	45.0/36.1
Hip room	54.0/52.1
Shoulder room	56.4/56.4

Capacities	
Seating capacity	5
Interior passenger volume (cu. ft.)	
without moonroof	101.9
with moonroof	100.5
Cargo volume (cu. ft.)	15.4
Fuel tank (gals.)	18.0

Curb Weights – Lbs					
Base Total	2.5 S	2.5 SR	2.5 SV	2.5 SL	3.5 SR
	3,212	3,258	3,233	3,254	3,463

2018 EPA Fuel Economy Estimates				
City/Hwy/Combined MPG	2.5 S/2.5 SV/2.5 SL	2.5 SR	3.5 SL	
	27/38/31	26/37/30	22/32/26	

Actual mileage may vary with driving conditions – use for comparison only.