

## NISSAN INTELLIGENT MOBILITY™

Nissan Intelligent Mobility guides everything we do. We're using new technologies to transform cars from mere driving machines into assistants. Together the journey is more confident, connected, and exciting. Whether it's cars that assist in the driving task, or highways that charge your EV as you go along, it's all in the very near future. And it's a future already taking shape in the Nissan you drive today.

### SEE ALTIMA® COME TO LIFE

Go to [NissanUSA.com](http://NissanUSA.com) and find an interactive brochure for Altima and every Nissan in the lineup. Available on desktop, smartphone, or tablet, it's the full product story - including demos, videos, and complete info on trims, colors, and accessories.



Innovation  
that excites

2019  
**ALTIMA®**



<sup>1</sup>World's first production variable compression turbo engine launched by Nissan Motor Co., Ltd. in 2018. <sup>2</sup>Availability of features vary by vehicle model year, model, trim level, packaging, and options. <sup>3</sup>ProPILOT Assist cannot prevent collisions. Always monitor traffic conditions and keep both hands on the steering wheel. See Owner's Manual for safety information. <sup>4</sup>Available feature. <sup>5</sup>Automatic Emergency Braking with Pedestrian Detection cannot prevent all collisions and may not provide warning or braking in all conditions. Driver should monitor traffic conditions and brake as needed to prevent collisions. See Owner's Manual for safety information. <sup>6</sup>Rear Automatic Braking cannot prevent all collisions and may not provide warning or braking in all conditions. Driver should monitor traffic conditions and brake as needed to prevent collisions. See Owner's Manual for safety information. <sup>7</sup>Rear Cross Traffic Alert may not detect all vehicles. See Owner's Manual for safety information. <sup>8</sup>Blind Spot Warning cannot prevent collisions and may not detect every object or warn in all situations. Driver should always turn and look before changing lanes. See Owner's Manual for safety information. <sup>9</sup>Lane Departure Warning and Intelligent Lane Intervention operate only when lane markings are able to be detected. See Owner's Manual for safety information. <sup>10</sup>Intelligent Around View® Monitor cannot eliminate blind spots and may not detect every object. Driver should always turn and check surroundings before driving. See Owner's Manual for safety information. <sup>11</sup>Virtual composite 360° view. <sup>12</sup>Driving is serious business and requires your full attention. If you have to use the connected device while driving, exercise extreme caution at all times so full attention may be given to vehicle operation. <sup>13</sup>Available services/features may be shown. Compatible connected device may be required. Only use services/features and device when safe and legal to do so. Subject to GPS and wireless network availability and connection, and system/technology limitations. Text rates/data usage/subscription may apply. Some services/features provided by companies not within Nissan or its partners' or agents' control and may be discontinued at any time. For more information, see dealer, Owner's Manual, or [NissanUSA.com/connect/important-information](http://NissanUSA.com/connect/important-information). <sup>14</sup>Never program while driving. GPS mapping may not be detailed in all areas or reflect current road status. <sup>15</sup>VC-Turbo™ engine horsepower and torque ratings: 248 hp and 273 lb-ft of torque ratings when using 93-octane fuel; 236 hp and 267 lb-ft of torque ratings when using 87-octane fuel. <sup>16</sup>2019 EPA Fuel Economy Estimates 28 City/39 Highway/32 Combined for Altima® S, SV, SL FWD; 26 City/36 Highway/30 Combined for Altima S, SV, SL AWD; 27 City/37 Highway/31 Combined for Altima SR, Platinum FWD; 25 City/35 Highway/29 Combined for Altima SR, Platinum AWD; 25 City/34 Highway/29 Combined for Altima SR, Platinum, VC-Turbo FWD. Fuel economy estimates based on 87-octane fuel. Actual mileage may vary with driving conditions. Use for comparison only. <sup>17</sup>Extra cost option. <sup>18</sup>Intelligent Forward Collision Warning cannot prevent collisions. See Owner's Manual for safety information. <sup>19</sup>Automatic Emergency Braking cannot prevent all collisions and may not provide warning or braking in all conditions. Driver should monitor traffic conditions and brake as needed to prevent collisions. See Owner's Manual for safety information. <sup>20</sup>RearView Monitor may not detect every object and does not eliminate blind spots or warn of moving objects. See Owner's Manual for safety information. <sup>21</sup>Intelligent Trace Control cannot prevent collisions or loss of control. Driver should remain in control of vehicle at all times. See Owner's Manual for safety information. <sup>22</sup>Intelligent Driver Alertness cannot provide a warning in every situation. See Owner's Manual for safety information. <sup>23</sup>State laws may apply. Review before using. <sup>24</sup>Driving is serious business and requires your full attention. If you have to use the feature while driving, exercise extreme caution at all times so full attention may be given to vehicle operation. <sup>25</sup>Information displayed is dependent on how vehicle is equipped. <sup>26</sup>The optional Rear Sonar System is a convenience, but is not a substitute for proper backing procedures. Always turn and check that it is safe to do so before backing up. May not detect every object behind you. <sup>27</sup>Genuine Nissan Accessories are covered by Nissan's Limited Warranty on Genuine Nissan Replacement Parts, Genuine NISMO® S-Tune Parts, and Genuine Nissan Accessories for the longer of 12 months/12,000 miles (whichever occurs first) or the remaining period under the 3-year/36,000-mile (whichever occurs first) Nissan New Vehicle Limited Warranty. Terms and conditions apply. See dealer, Warranty Information Booklet, or [parts.NissanUSA.com](http://parts.NissanUSA.com) for details. <sup>28</sup>Cargo shown for display purposes only. Cargo and load capacity limited by weight and distribution. Always secure cargo. <sup>29</sup>FWD models only. <sup>30</sup>AWD models only. <sup>31</sup>Brake Assist cannot prevent all collisions and may not provide warning or braking in all conditions. Driver should monitor traffic conditions and brake as needed to prevent collisions. See Owner's Manual for safety information. <sup>32</sup>Intelligent Cruise Control uses limited braking and is not a collision avoidance or warning system. Driver should monitor traffic conditions and brake as needed to prevent collisions. See Owner's Manual for safety information. <sup>33</sup>Vehicle Dynamic Control cannot prevent collisions due to abrupt steering, carelessness, or dangerous driving techniques. It should remain on when driving, except when freeing the vehicle from mud or snow. See Owner's Manual for safety information. <sup>34</sup>Use Hands Free Text Messaging when parked in a safe location. If you must use while driving, monitor traffic conditions and keep both hands on the steering wheel to prevent collisions. Compatible device required. Message and data rates may apply. <sup>35</sup>Air bags are only a supplemental restraint system. Always wear your seat belt. Rear-facing child restraints should not be placed in the front-passenger's seat. All children 12 and under should ride in the rear seat properly secured in child restraints, booster seats, or seat belts according to their size. Air bags will only inflate in certain accidents. See Owner's Manual for safety information. <sup>36</sup>Tire Pressure Monitoring System is not a substitute for regular tire pressure checks. See Owner's Manual for safety information. <sup>37</sup>Vehicle must be on for the Easy-Fill Tire Alert to operate. <sup>38</sup>For a period of 36 months/36,000 miles from the date the vehicle is delivered to the first retail buyer or otherwise put into use, whichever is earlier. Android Auto™ is a trademark of Google, Inc. Apple CarPlay® is a registered trademark of Apple, Inc. Bluetooth® is a registered trademark of Bluetooth SIG, Inc. Bose® is a registered trademark of The Bose Corporation. ChromaFlair® is a trademark of Optical Coating Laboratory, LLC. Facebook® is a registered trademark of Facebook, Inc. Google Assistant™ is a trademark of Google Inc. HD Radio® is a registered trademark of iBiquity Digital Corporation. HomeLink® is a registered trademark of Gentex Corporation. iPhone® is a registered trademark of Apple, Inc. All rights reserved. iPhone® or other external device not included. Siri® and Siri® Eyes Free are registered trademarks of Apple, Inc. The Sirius®, XM®, and SiriusXM® names and all related marks and logos are trademarks of Sirius XM Radio Inc. All other trademarks are the property of their respective owners. Twitter® is a registered trademark of Twitter, Inc. YouTube® is a registered trademark of Google, Inc. ZF Sachs® is a registered trademark of ZF Friedrichshafen AG. This brochure is intended for general descriptive and informational purposes only. It is subject to change and does not constitute an offer, representation or warranty (express or implied) by Nissan North America, Inc. Interested parties should confirm the accuracy of any information in this brochure as it relates to a vehicle directly with Nissan North America, Inc. before relying on it to make a purchase decision. Nissan North America, Inc. reserves the right to make changes, at any time, without prior notice, in prices, colors, materials, equipment, specifications, and models and to discontinue models or equipment. Due to continuous product development and other pre- and post-production factors, actual vehicle, materials and specifications may vary from this brochure. Some vehicles shown with optional equipment. See the actual vehicle for complete accuracy. Availability and delivery times for particular models or equipment may vary. Specifications, options and accessories may differ in Hawaii, U.S. territories and other countries. For additional information on availability, options or accessories, see your Nissan dealer or contact Nissan North America, Inc. At [NissanUSA.com](http://NissanUSA.com), you'll find virtual product demonstrations, a way to "build your own Nissan," a dealer locator, and more information about key Nissan support services. Or if you'd prefer, call 1-800-NISSAN-3 for answers to specific questions about Altima® or any other Nissan vehicle. The Nissan names, logos, product names, feature names, and slogans are trademarks owned by or licensed to Nissan Motor Co. Ltd. and/or its North American subsidiaries. Other trademarks and trade names are those of their respective owners. **Always wear your seat belt, and please drive responsibly.** ©2018 Nissan North America, Inc. <sup>19</sup>Altima®. 1921687-N-9/18-80M-CGI

# The All-New 2019 Nissan Altima® Impossibly Smart

This isn't just a sedan, this is our latest technology, built to unlock the pure joy of driving. With the world's first engine that feels like two in one.<sup>1</sup> And Nissan Intelligent Mobility™ that responds to the world around you in real-time.<sup>2</sup> Confidence from available Intelligent All-Wheel Drive. Surprising connectivity before you even reach the driver's seat. The All-New 2019 Nissan Altima. Tech that moves you.



## ProPILOT ASSIST

Welcome to a whole new highway commute. With Nissan ProPILOT Assist, you can let go of driving stress while Altima® takes care of the little things – like following the car ahead at a preset distance or helping keep you centered in your lane. It can even bring your Altima to a full stop based on the traffic flow, and hold you there. Now even your typical morning drive can be the best way to start the day.<sup>3,4</sup>

HELPS KEEP YOU  
CENTERED IN  
GENTLE CURVES

MAINTAINS YOUR  
PRESET SPEED AND  
DISTANCE

CAN EVEN  
COME TO A  
COMPLETE STOP



NISSAN INTELLIGENT MOBILITY™



## SAFETY SHIELD® 360

Nissan Intelligent Mobility is changing how you move forever with technology that makes you feel more connected, confident, and excited.

As part of Nissan Intelligent Mobility, Safety Shield 360® includes features that help you see more, sense more, and can give you an assist when you need it. The following features are standard on trim levels SV and above.<sup>2</sup>

Automatic Emergency Braking with Pedestrian Detection<sup>5</sup>

Rear Automatic Braking<sup>6</sup>

Rear Cross Traffic Alert<sup>7</sup>

Blind Spot Warning<sup>8</sup>

Lane Departure Warning<sup>9</sup>

High Beam Assist

## INTELLIGENT AROUND VIEW® MONITOR

Parking will never be the same. Intelligent Around View Monitor uses four cameras to give you a virtual composite 360° bird's-eye view of your Altima, with selectable split-screen closeups of the front, rear, and curbside views, so you can get a better look. It can even give you an on-screen heads-up when it detects moving objects near your vehicle. We're looking at you, shopping cart.<sup>4, 10, 11</sup>



NISSAN INTELLIGENT MOBILITY™

### SMARTPHONE CONNECTIVITY

Plug in a compatible iPhone® and Apple CarPlay® gives you access to your favorite apps and Siri.®<sup>12, 13</sup>

If you use a compatible Android phone, Android Auto™ puts what's important to you, like the Google Assistant, at your fingertips, directly on your Altima®'s NissanConnect® 8" touch-screen display.<sup>12, 13</sup>

- Apple CarPlay® compatibility<sup>13</sup>
- Android Auto™ compatibility<sup>13</sup>
- Available Nissan Door to Door Navigation<sup>14</sup>
- Available NissanConnect® Services with Amazon Alexa and Google Assistant<sup>4, 13</sup>



### INTELLIGENT ALL-WHEEL DRIVE

Altima gives you peace of mind you never thought you could get from a sedan. Part of Nissan Intelligent Mobility, available Intelligent All-Wheel Drive continuously monitors road conditions, and responds in an instant, sending power to the wheels that need it most.

236  
HORSEPOWER<sup>15</sup>

267  
LB-FT OF TORQUE<sup>15</sup>

34  
HWY MPG<sup>16</sup>



### THE WORLD'S FIRST PRODUCTION VARIABLE COMPRESSION TURBO ENGINE<sup>1</sup>

Imagine an engine so smart it seems to anticipate what you want. Whether it's turbocharged power that pushes you back in your seat or impressive fuel efficiency, even in city streets,<sup>16</sup> Altima's all-new shape-shifting VC-Turbo™ engine lets you have both - without compromise.<sup>1</sup>



## CHOOSE YOUR COLOR



Glacier White

Pearl White TriCoat<sup>17</sup>

Brilliant Silver Metallic

Gun Metallic

Sunset Drift ChromaFlair<sup>17</sup>

S SR SV SL PLT

S SR SV SL PLT

S SR SV SL PLT

S SR SV SL PLT

S SR SV SL PLT

GRAY CLOTH	■				
CHARCOAL CLOTH	■				
CHARCOAL SPORT CLOTH					
GRAY LEATHER					
CHARCOAL LEATHER					

GRAY CLOTH					
CHARCOAL CLOTH					
CHARCOAL SPORT CLOTH	■				
GRAY LEATHER					
CHARCOAL LEATHER					

GRAY CLOTH	■				
CHARCOAL CLOTH					
CHARCOAL SPORT CLOTH					
GRAY LEATHER					
CHARCOAL LEATHER					

GRAY CLOTH	■				
CHARCOAL CLOTH					
CHARCOAL SPORT CLOTH					
GRAY LEATHER					
CHARCOAL LEATHER					

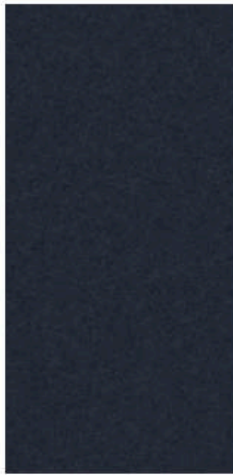
GRAY CLOTH					
CHARCOAL CLOTH					
CHARCOAL SPORT CLOTH					
GRAY LEATHER					
CHARCOAL LEATHER					



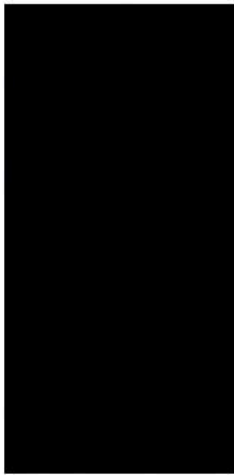
Scarlet Ember Tintcoat<sup>17</sup>



Deep Blue Pearl



Storm Blue Metallic



Super Black

S SR SV SL PLT

S SR SV SL PLT

S SR SV SL PLT

S SR SV SL PLT

■ Standard  
Nissan has taken care to ensure that the digital color swatches presented here are the closest possible representation of actual vehicle colors. Swatches may vary slightly due to viewing light or screen quality. Please see the actual vehicle and colors at your dealer.

GRAY CLOTH					
CHARCOAL CLOTH					
CHARCOAL SPORT CLOTH	■				
GRAY LEATHER					
CHARCOAL LEATHER					

GRAY CLOTH					
CHARCOAL CLOTH					
CHARCOAL SPORT CLOTH					
GRAY LEATHER					
CHARCOAL LEATHER					

GRAY CLOTH	■				
CHARCOAL CLOTH					
CHARCOAL SPORT CLOTH					
GRAY LEATHER					
CHARCOAL LEATHER					

GRAY CLOTH					
CHARCOAL CLOTH					
CHARCOAL SPORT CLOTH					
GRAY LEATHER					
CHARCOAL LEATHER					

GRAY CLOTH	■				
CHARCOAL CLOTH					
CHARCOAL SPORT CLOTH					
GRAY LEATHER					
CHARCOAL LEATHER					

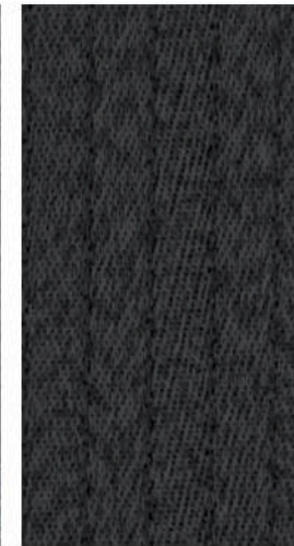
## CHOOSE YOUR INTERIOR



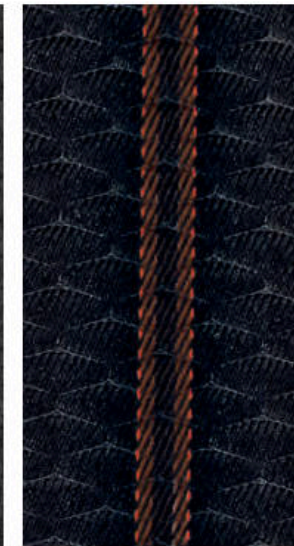
Nissan Altima® Platinum VC-Turbo™ shown in Charcoal Leather.



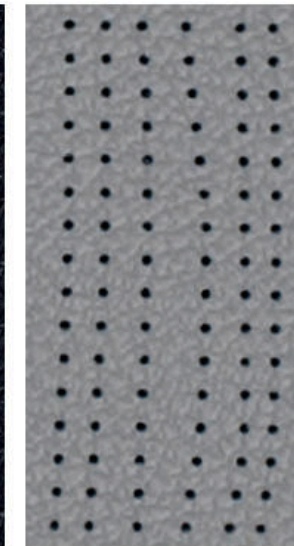
Gray Cloth  
S|SV



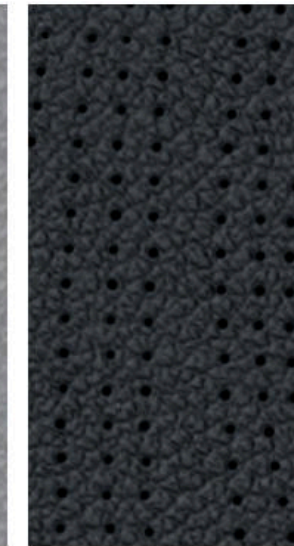
Charcoal Cloth  
S|SV



Charcoal Sport Cloth  
SR



Gray Leather  
SL|PLATINUM



Charcoal Leather  
SL|PLATINUM

## CHOOSE YOUR TRIM LEVEL AND PACKAGE

**S**

188-hp 2.5-liter Direct Injection Gasoline (DIG) 4-cylinder engine • Available Intelligent All-Wheel Drive • Intelligent Forward Collision Warning<sup>18</sup> • Automatic Emergency Braking<sup>19</sup> • RearView Monitor<sup>20</sup> • Active Ride Control • Intelligent Trace Control<sup>21</sup> • Intelligent Driver Alertness<sup>22</sup> • 16" Steel wheels with bolt-on wheel covers • Intelligent Auto Headlights • Nissan Intelligent Key<sup>®</sup> with Push Button Ignition • Remote Engine Start System<sup>23</sup> • 8-way power adjustable driver's seat • Advanced Drive-Assist<sup>®</sup> Display<sup>24, 25</sup> • NissanConnect<sup>®</sup> 8" touch-screen display<sup>13</sup> • Apple CarPlay<sup>®</sup> (compatible iPhone<sup>®</sup> required) • Android Auto<sup>™</sup><sup>13</sup> • Bluetooth<sup>®</sup> Hands-free Phone System<sup>13</sup> • Two USB ports and two USB-C ports<sup>12</sup> • SiriusXM<sup>®</sup> Radio with 3-month complimentary trial access<sup>13</sup> • HD Radio<sup>®</sup> • Streaming audio via Bluetooth<sup>®</sup> wireless technology<sup>15</sup>



**SR/SR VC-TURBO™**

INCLUDES S EQUIPMENT PLUS:

Available Intelligent All-Wheel Drive • Paddle shifters with manual shift mode • Sport-tuned suspension (FWD models only) • Blind Spot Warning<sup>8</sup> • Rear Cross Traffic Alert<sup>7</sup> • 19" Aluminum-alloy wheels • LED headlights with signature • Dark chrome V-Motion grille • Body-color door handles • Black outside mirrors • Charcoal rear diffuser • Dual chrome exhaust finishers • Sport Cloth seat trim • Leather-wrapped steering wheel • Leather-wrapped shift knob

**SR VC-TURBO ADDS:**

- 248-hp 2.0-liter Variable Compression Turbo (VC-Turbo™) 4-cylinder<sup>15</sup>
- Power sliding glass moonroof
- Heated outside mirrors with LED turn signal indicators
- Heated front seats

SR VC-Turbo available on Front-Wheel Drive models only.



**SV**

INCLUDES S EQUIPMENT PLUS:

Available Intelligent All-Wheel Drive (AWD) • ProPILOT Assist<sup>3</sup> • Automatic Emergency Braking with Pedestrian Detection<sup>5</sup> • Intelligent Lane Intervention<sup>9</sup> • Blind Spot Warning<sup>8</sup> • Rear Cross Traffic Alert<sup>7</sup> • Rear Sonar System<sup>26</sup> • Rear Automatic Braking<sup>6</sup> • High Beam Assist • 17" Aluminum-alloy wheels • LED headlights with signature • LED fog lights • Heated outside mirrors with LED turn signal indicators • Power sliding glass moonroof • Dual chrome exhaust finishers • Dual Zone Automatic Temperature Control • Rear passenger air conditioning vents • Passenger-side front-window one-touch auto-up/down • Remote Engine Start System with Intelligent Climate Control<sup>23</sup> • Auto-dimming inside rearview mirror • HomeLink<sup>®</sup> Universal Transceiver • Driver's seat power lumbar support • Leather-wrapped steering wheel • Leather-wrapped shift knob



**SL**

INCLUDES SV EQUIPMENT PLUS:

Traffic Sign Recognition • 4-way power adjustable front-passenger's seat • Leather-appointed seats • Nissan Door to Door Navigation with Premium Traffic<sup>14</sup> • SiriusXM<sup>®</sup> Traffic and Travel Link<sup>®</sup> with 3-month complimentary trial access<sup>13</sup> • NissanConnect<sup>®</sup> Services powered by SiriusXM<sup>®</sup> with complimentary trial access to 3-year Select and 6-month Premium Plus packages<sup>13</sup>



**PLATINUM/PLATINUM VC-TURBO**

INCLUDES SL EQUIPMENT PLUS:

Intelligent Around View<sup>®</sup> Monitor<sup>10</sup> • 19" Aluminum-alloy wheels • Interior accent lighting • Driver's memory seat

**PLATINUM VC-TURBO ADDS:**

- 248-hp 2.0-liter Variable Compression Turbo (VC-Turbo) 4-cylinder<sup>15</sup>

Platinum VC-Turbo available on Front-Wheel Drive models only.

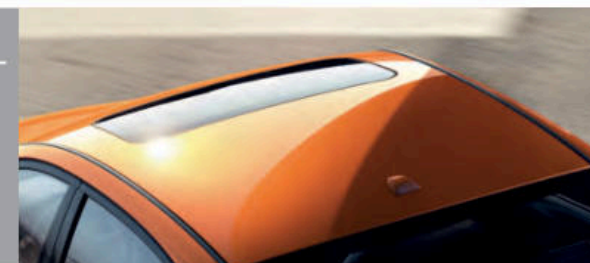


**SR**

PREMIUM PACKAGE

Power sliding glass moonroof  
Heated front seats  
Heated outside mirrors with LED turn signal indicators

This package is available on 2.5-L models and standard on 2.0-L VC-Turbo models.



## CHOOSE YOUR ACCESSORIES



Every Genuine Nissan Accessory is custom-fit, custom-designed and durability-tested. Each one is backed by Nissan's 3-year/36,000-mile (whichever occurs first) limited warranty (if installed by dealer at the time of purchase), and can be financed when installed by dealer at time of purchase.<sup>27</sup>

**A. Nissan WiFi<sup>13</sup>**

Get on the road and online.

**B. Trunk Protector<sup>28</sup>**

Keep it looking like new.

**C. Frameless Auto-dimming Rearview Mirror with Universal Remote**

This is one eye-opening feature.

**D. All-season Floor Mats**

Skip the mud - and other messes.

**E. Illuminated Kick Plates**

Fewer scuffs and a grand entry, every time.

**F. Impact Sensor**

Keep your Altima alarmed, so you don't have to be.

**G. Sliding Trunk Organizer Tray<sup>28</sup>**

Bring some order to your cargo area.

**H. Interior Accent Lighting**

Add a warm glow to the mood.

**Additional Accessories:**

- Frameless Prizm Rearview Mirror with Universal Remote
- Carpeted Floor Mats
- Carpeted Trunk Mat
- Sport Carpeted Floor Mats
- Hideaway Trunk Net Kit<sup>28</sup>
- Portable Trunk Organizer<sup>28</sup>
- Clear Rear Bumper Protector
- Black Rear Bumper Protector
- Wheel Locks
- And More

## GENUINE NISSAN ACCESSORIES

# TURN BRAND-NEW INTO ALL YOU

For more information and to shop online for Altima® Genuine Nissan Accessories, go to [bit.ly/19altima-estore](https://bit.ly/19altima-estore)



To see Genuine Nissan Accessories in action, go to [bit.ly/19altima\\_gna](https://bit.ly/19altima_gna)

**Nissan Altima® SL** shown in Scarlet Ember Tintcoat with 17" Aluminum-alloy Wheels, Splash Guards, Chrome Body Side Moldings, External Ground Lighting, Chrome Rear Bumper Protector, and Rear Spoiler.

## SPECIFICATIONS

Engine	S	SR	SV	SL	Platinum
2.5-liter Direct Injection Gasoline (DIG™) DOHC 16-valve 4-cylinder 188 <sup>29</sup> /182 <sup>30</sup> hp @ 6,000 rpm 180 <sup>29</sup> /178 <sup>30</sup> lb-ft of torque @ 3,600 rpm	■	■	■	■	■
2.0-liter Variable Compression Turbo (VC-Turbo™) DOHC 16-valve 4-cylinder 248/236 hp @ 5,600 rpm <sup>15</sup> 273/267 lb-ft of torque @ 4,000 rpm <sup>15</sup>		□			□

Drivetrain	S	SR	SV	SL	Platinum
Front-Wheel Drive (FWD)	■	■	■	■	■
Intelligent All-Wheel Drive (AWD)	□	□	□	□	□
Xtronic CVT® (Continuously Variable Transmission)	■	■	■	■	■
Paddle shifters with manual shift mode		■			

Brakes	S	SR	SV	SL	Platinum
Front vented disc/solid rear disc brakes	■	■	■	■	■
Anti-lock Braking System (ABS)	■	■	■	■	■
Electronic Brake force Distribution (EBD)	■	■	■	■	■
Brake Assist <sup>31</sup>	■	■	■	■	■
Electronic parking brake	■ <sup>30</sup>	■ <sup>30</sup>	■	■	■

Suspension/Steering	S	SR	SV	SL	Platinum
Independent strut front suspension	■	■	■	■	■
Multi-link independent rear suspension	■	■	■	■	■
Twin-tube front struts/monotube rear shock absorbers	■	■	■	■	■
Sport-tuned suspension		■ <sup>29</sup>			
Front and rear stabilizer bars	■	■	■	■	■
Dual pinion electric-powered steering	■	■	■	■	■

Driver Assistance Technologies	S	SR	SV	SL	Platinum
Cruise control	■	■			
Intelligent Cruise Control <sup>32</sup>			■	■	■
ProPILOT Assist <sup>3</sup>			■	■	■
Intelligent Forward Collision Warning <sup>18</sup>	■	■	■	■	■
Automatic Emergency Braking <sup>19</sup>	■	■			
Automatic Emergency Braking with Pedestrian Detection <sup>5</sup>			■	■	■
Intelligent Lane Intervention <sup>9</sup>			■	■	■
Blind Spot Warning <sup>8</sup>		■	■	■	■
Rear Cross Traffic Alert <sup>7</sup>		■	■	■	■
RearView Monitor <sup>20</sup>	■	■	■	■	■
Intelligent Around View® Monitor <sup>10</sup>					■
Rear Sonar System <sup>26</sup>			■	■	■
Rear Automatic Braking <sup>6</sup>			■	■	■
Vehicle Dynamic Control (VDC) <sup>33</sup> with Traction Control System (TCS)	■	■	■	■	■
Active Brake Limited Slip	■ <sup>30</sup>	■ <sup>30</sup>	■ <sup>30</sup>	■ <sup>30</sup>	■ <sup>30</sup>
Active Ride Control	■	■	■	■	■
Intelligent Trace Control <sup>21</sup>	■	■	■	■	■
Hill start assist	■	■	■	■	■
Automatic brake hold			■	■	■
High Beam Assist			■	■	■
Traffic Sign Recognition			■	■	■
Intelligent Driver Alertness <sup>22</sup>	■	■	■	■	■

Wheels/Tires	S	SR	SV	SL	Platinum
16" Steel wheels with bolt-on wheel covers	■				
17" Aluminum-alloy wheels			■	■	
19" Aluminum-alloy wheels		■			■
P215/60HR16 all-season tires	■				
P215/55VR17 all-season tires			■	■	
P235/40VR19 all-season tires		■			■

Exterior Features	S	SR	SV	SL	Platinum
Intelligent Auto Headlights	■	■	■	■	■
Projector-type halogen headlights	■				
LED headlights with signature		■	■	■	■
LED fog lights			■	■	■
Dual power outside mirrors	■		■	■	■
Heated outside mirrors with LED turn signal indicators		P	■	■	■
Power sliding glass moonroof		P	■	■	■
Dark chrome V-Motion grille		■			
Charcoal rear diffuser		■			
Dual chrome exhaust finishers		■	■	■	■

Comfort/Convenience	S	SR	SV	SL	Platinum
Air conditioning	■	■			
Dual Zone Automatic Temperature Control			■	■	■
Rear passenger air conditioning vents			■	■	■
Power windows with one-touch driver-side auto-up/down	■	■	■	■	■
Passenger-side front-window one-touch auto-up/down			■	■	■
Power door locks with auto-locking feature	■	■	■	■	■
Nissan Intelligent Key® with Push Button Ignition	■	■	■	■	■
Remote Engine Start System <sup>25</sup>	■	■			
Remote Engine Start System with Intelligent Climate Control <sup>23</sup>			■	■	■
Tilt and telescoping steering column	■	■	■	■	■
Variable intermittent speed-sensitive windshield wipers	■	■	■	■	■
Sun visors with illuminated vanity mirrors and extensions	■	■	■	■	■
Auto-dimming inside rearview mirror			■	■	■
HomeLink® Universal Transceiver			■	■	■
Interior accent lighting				■	■

Seating/Appointments	S	SR	SV	SL	Platinum
8-way power adjustable driver's seat	■	■	■	■	■
Driver's seat power lumbar support			■	■	■
4-way power adjustable front-passenger's seat			■	■	■
Driver's memory seat			■	■	■
60/40-split fold-down rear seatbacks	■	■	■	■	■
Cloth seat trim	■		■		
Sport Cloth seat trim		■			
Leather-appointed seats			■	■	■
Heated front seats		P	■	■	■
Heated steering wheel			■	■	■
Leather-wrapped steering wheel		■	■	■	■
Leather-wrapped shift knob		■	■	■	■
Wood-tone trim				■	■

Infotainment	S	SR	SV	SL	Platinum
Advanced Drive-Assist® Display <sup>24, 25</sup>	■	■	■	■	■
NissanConnect® 8" touch-screen display <sup>13</sup>	■	■	■	■	■
Nissan Door to Door Navigation with Premium Traffic <sup>14</sup>			■	■	■
SiriusXM® Traffic and Travel Link® with 3-month complimentary trial access <sup>13</sup>				■	■
NissanConnect® Services powered by SiriusXM® with complimentary trial access to 3-year Select and 6-month Premium Plus packages <sup>13</sup>				■	■
Nissan Voice Recognition for audio and navigation <sup>14</sup>				■	■
Apple CarPlay <sup>6,15</sup>	■	■	■	■	■
Android Auto <sup>13,15</sup>	■	■	■	■	■
Siri® Eyes Free <sup>13</sup>	■	■	■	■	■
Hands-free Text Messaging Assistant <sup>34</sup>	■	■	■	■	■
Bluetooth® Hands-free Phone System <sup>15</sup>	■	■	■	■	■
AM/FM audio system with six speakers	■	■	■		
Bose® Premium Audio System with nine speakers				■	■
Active Noise Cancellation				■	■
Steering wheel-mounted audio controls	■	■	■	■	■
Auxiliary audio input Jack <sup>12</sup>	■	■	■	■	■
Two USB ports and two USB-C ports <sup>12</sup>	■	■	■	■	■
SiriusXM® Radio with 3-month complimentary trial access <sup>15</sup>	■	■	■	■	■
HD Radio®	■	■	■	■	■
Streaming audio via Bluetooth® wireless technology <sup>13</sup>	■	■	■	■	■

Safety/Security	S	SR	SV	SL	Platinum
Nissan Advanced Air Bag System with dual-stage supplemental front air bags with seat-belt and occupant-classification sensors <sup>35</sup>	■	■	■	■	■
Seat-mounted side-impact supplemental air bags for front- and rear-seat outboard occupants <sup>35</sup>	■	■	■	■	■
Driver and front-passenger supplemental knee air bags <sup>35</sup>	■	■	■	■	■
Roof-mounted curtain side-impact supplemental air bags with rollover sensor for front- and rear-seat outboard occupant head protection <sup>35</sup>	■	■	■	■	■
3-point ALR/ELR seat belt system (ELR only for driver)	■	■	■	■	■
LATCH System (Lower Anchors and Tethers for Children)	■	■	■	■	■
Zone Body construction with front and rear crumple zones	■	■	■	■	■
Tire Pressure Monitoring System (TPMS) with individual tire pressure display and Easy-Fill Tire Alert <sup>36, 37</sup>	■	■	■	■	■
Nissan Vehicle Immobilizer System	■	■	■	■	■
Vehicle Security System	■	■	■	■	■

■ Standard □ Optional P Part of SR Premium Package

## DIMENSIONS/CAPACITIES/WEIGHTS/MPG

Exterior Dimensions - Inches	
<b>Exterior</b>	
Wheelbase	111.2
Overall length	192.9
Overall width	72.9
Overall height	56.7 – 57.4 (depending on vehicle configuration)
Track width	63.6 S; 63.2 SV/SL; 62.8 SR/Platinum

Aerodynamics	
Drag coefficient (Cd)	0.26

Interior Dimensions - Inches	
<b>Interior</b>	
Head room without moonroof (front/rear)	39.2/36.9
Head room with moonroof (front/rear)	38.0/36.7
Leg room (front/rear)	43.8/35.2
Hip room (front/rear)	54.7/54.5
Shoulder room (front/rear)	58.2/57.1

Capacities	
Seating capacity	5
Interior passenger volume without moonroof (cu. ft.)	100.8
Interior passenger volume with moonroof (cu. ft.)	98.8
Cargo capacity (cu. ft.) <sup>28</sup>	15.4
Fuel tank (gals.)	16.2

Curb Weights - Lbs.					
Base total (lbs.)	S	SR	SV	SL	Platinum
2.5-L FWD	3,212	3,290	3,265	3,290	3,329
2.5-L AWD	3,344	3,418	3,398	3,423	3,462
2.0-L VC-Turbo FWD	N/A	3,418	N/A	N/A	3,436

2019 EPA Fuel Economy Estimates <sup>16</sup>					
City/Hwy/Combined MPG	S	SR	SV	SL	Platinum
2.5-L FWD	28/39/32	27/37/31	28/39/32	28/39/32	27/37/31
2.5-L AWD	26/36/30	25/35/29	26/36/30	26/36/30	25/35/29
2.0-L VC-Turbo FWD	N/A	25/34/29	N/A	N/A	25/34/29

## NISSAN ROADSIDE ASSISTANCE

Your peace of mind is on us. For 36 months or 36,000 miles, whichever comes first, your new Nissan vehicle is covered for the following:<sup>38</sup>

- Flat-tire changes
- Trip Interruption benefits
- Jump starts
- Vehicle lockouts
- Emergency fuel delivery

Follow Nissan on:



visit [NissanUSA.com/altima](http://NissanUSA.com/altima)

PRINTED IN USA