



Nissan Intelligent Mobility moves you one step ahead. In cars that feel like an extension of you, helping you see more and sense more, reacting with you, and sometimes even for you. Nissan Intelligent Mobility is about a better future - moving through life with greater confidence, excitement and connection to the world around you.



ALTIMA®

2023



World's first production variable compression turbo engine launched by Nissan Motor Co., Ltd. in 2018. ²Use feature only when safe and legal. Compatible device and service required. Subject to third party service availability. For more information, see [NissanUSA.com/connect/legal](https://www.nissanusa.com/connect/legal). ³Available feature. ⁴Nissan Safety Shield technologies can't prevent all collisions or warn in all situations. See Owner's Manual for important safety information. ⁵Never program while driving. GPS mapping may not be detailed in all areas or reflect current road status. ⁶Driving is serious business and requires your full attention. If you have to use the connected device while driving, exercise extreme caution at all times so full attention may be given to vehicle operation. Smartphone or other external device not included. ⁷Availability of features vary by vehicle model year, model, trim level, packaging, and options. Please see Owner's Manual for important feature information. ⁸Intelligent All-Wheel Drive cannot prevent collisions or provide enhanced traction in all conditions. Always monitor traffic and weather conditions. ⁹VC-Turbo® engine horsepower and torque ratings: 248 hp and 273 lb-ft of torque ratings when using 93-octane fuel; 236 hp and 267 lb-ft of torque ratings when using 87-octane fuel. ¹⁰2023 EPA Fuel Economy Estimates: 27 City MPG / 39 Highway MPG / 32 Combined MPG for Altima® S, SV FWD; 27 City MPG / 37 Highway MPG / 31 Combined MPG for Altima® SR, SL FWD; 26 City MPG / 36 Highway MPG / 30 Combined MPG for Altima® SV, SR, SL AWD; 25 City MPG / 34 Highway MPG / 29 Combined MPG for Altima® SR FWD VC-Turbo. Fuel economy estimates based on 87-octane fuel. Actual mileage may vary with driving conditions. Use for comparison only. ¹¹ProPILOT Assist cannot prevent collisions. It is the driver's responsibility to be in control of the vehicle at all times. Always monitor traffic conditions and keep both hands on the steering wheel. System operates only when lane markings are detected. Does not function in all weather, traffic and road conditions. System has limited control capability and the driver may need to steer, brake or accelerate at any time to maintain safety. See Owner's Manual for safety information. ¹²Automatic Emergency Braking with Pedestrian Detection cannot prevent all collisions and may not provide warning or braking in all conditions. Driver should monitor traffic conditions and brake as needed to prevent collisions. See Owner's Manual for safety information. ¹³Rear Automatic Braking cannot prevent all collisions and may not provide warning or braking in all conditions. Driver should always turn and check surroundings before driving and brake as needed to prevent collisions. See Owner's Manual for safety information. ¹⁴Rear Cross Traffic Alert may not detect all vehicles. See Owner's Manual for safety information. ¹⁵Blind Spot Warning cannot prevent collisions and may not detect every object or warn in all situations. Driver should always turn and look before changing lanes. See Owner's Manual for safety information. ¹⁶Lane Departure Warning and Intelligent Lane Intervention only operate when lane markings are able to be detected. See Owner's Manual for safety information. ¹⁷Intelligent Around View® Monitor cannot eliminate blind spots and may not detect every object. Driver should always turn and check surroundings before driving. See Owner's Manual for safety information. ¹⁸Virtual composite 360° view. ¹⁹Extra cost option. ²⁰Leather appointments. ²¹Intelligent Forward Collision Warning cannot prevent collisions. See Owner's Manual for safety information. ²²Sonar System may not detect every object. Driver should always check surroundings before driving. See Owner's Manual for safety information. ²³RearView Monitor may not detect every object and does not eliminate blind spots or warn of moving objects. See Owner's Manual for safety information. ²⁴Intelligent Driver Alertness cannot provide a warning in every situation. See Owner's Manual for safety information. ²⁵Rear Door Alert System does not detect people or cargo. Always check rear seat before exiting. See Owner's Manual for safety information. ²⁶Remote Engine Start System to be used only in accordance with laws or rules in effect in your vehicle's location. ²⁷Use Hands Free Text Messaging when parked in a safe location. If you must use while driving, monitor traffic conditions and keep both hands on the steering wheel to prevent collisions. Compatible device required. Message and data rates may apply. ²⁸Air bags are only a supplemental restraint system. Always wear your seat belt. Rear-facing child restraints should not be placed in the front-passenger's seat. All children 12 and under should ride in the rear seat properly secured in child restraints, booster seats, or seat belts according to their size. Air bags will only inflate in certain accidents. See Owner's Manual for safety information. ²⁹Tire Pressure Monitoring System is not a substitute for regular tire pressure checks. See Owner's Manual for safety information. ³⁰Vehicle must be on for the Easy-Fill Tire Alert to operate. ³¹Available on AWD models and on SR FWD VC-Turbo and SL models. ³²AWD models only. ³³Information displayed is dependent on how vehicle is equipped. Driving is serious business and requires your full attention. If you have to use the feature while driving, exercise extreme caution at all times so full attention may be given to vehicle operation. ³⁴SiriusXM with 360L: Certain features and/or content may not be available unless an active data connection is enabled in the vehicle. Content varies by SiriusXM subscription package. ³⁵FWD models only. ³⁶Intelligent Trace Control cannot prevent collisions or loss of control. Driver should remain in control of vehicle at all times. See Owner's Manual for safety information. ³⁷Traffic Sign Recognition may not detect and read all traffic signs in all conditions. Driver should monitor all traffic signs and obey all traffic laws. See Owner's Manual for details. ³⁸For complete information concerning warranty coverage, conditions, limitations, and exclusions, see your Nissan dealer and [parts.nissanusa.com](https://www.nissanusa.com) for warranty details. ³⁹Cargo and load capacity limited by weight and distribution. Always secure cargo. ⁴⁰Dual Camera Drive Recorder to be used only in accordance with any laws or rules in effect in your vehicle's location that may apply to audio or video recordings of drivers and passengers. ⁴¹Vehicle shown is for illustrative purposes only. Not representative of brochure's model year/model. ⁴²Compatible smartphone required. Virtual Key to be used only in accordance with laws or rules in effect in your vehicle's location. Actual maximum distance for operation will vary depending on obstructions between compatible device and vehicle. ⁴³Brake Assist cannot prevent all collisions and may not provide warning or braking in all conditions. Driver should monitor traffic conditions and brake as needed to prevent collisions. See Owner's Manual for safety information. ⁴⁴Vehicle Dynamic Control cannot prevent collisions due to abrupt steering, carelessness, or dangerous driving techniques. It should remain on when driving, except when freeing the vehicle from mud or snow. See Owner's Manual for safety information. ⁴⁵Roadside assistance coverage period varies by model-year model. For complete information concerning warranty coverage, conditions and exclusions, see your Nissan dealer and read the warranty information booklet for the model-year model. Apple CarPlay®, Siri, and Siri Eyes Free are registered trademarks of Apple, Inc. Bluetooth® is a registered trademark of Bluetooth SIG, Inc. Bose® is a registered trademark of The Bose Corporation. Facebook® is a registered trademark of Facebook, Inc. Google, Android, Google Play, Android Auto and other marks are trademarks of Google LLC. Google Assistant is not available in certain languages and countries. To use Android Auto on your car display, you'll need an Android phone running Android 6 or higher, an active data plan, and the Android Auto app. Instagram® is a registered trademark of Instagram, LLC. The Sirius®, XM®, and SiriusXM® names and all related marks and logos are trademarks of Sirius XM Radio Inc. All other trademarks are the property of their respective owners. Twitter® is a registered trademark of Twitter, Inc. YouTube® is a registered trademark of Google LLC. This brochure is intended for general descriptive and informational purposes only. It is subject to change and does not constitute an offer, representation or warranty (express or implied) by Nissan North America, Inc. Interested parties should confirm the accuracy of any information in this brochure as it relates to a vehicle directly with Nissan North America, Inc. before relying on it to make a purchase decision. Nissan North America, Inc. reserves the right to make changes, at any time, without prior notice, in prices, colors, materials, equipment, specifications, and models and to discontinue models or equipment. Due to continuous product development and other pre- and post-production factors, actual vehicle, materials and specifications may vary from this brochure. Some vehicles shown with optional equipment. See the actual vehicle for complete accuracy. Availability and delivery times for particular models or equipment may vary. Specifications, options and accessories may differ in Hawaii, U.S. territories and other countries. For additional information on availability, options or accessories, see your Nissan dealer or contact Nissan North America, Inc. At [NissanUSA.com](https://www.nissanusa.com), you'll find virtual product demonstrations, a way to 'build your own Nissan,' a dealer locator, and more information about key Nissan support services. Or if you'd prefer, call 1-800-NISSAN-3 for answers to specific questions about Altima® or any other Nissan vehicle. The Nissan names, logos, product names, feature names, and slogans are trademarks owned by or licensed to Nissan Motor Co. Ltd. and/or its North American subsidiaries. Other trademarks and trade names are those of their respective owners. **Always wear your seat belt, and please drive responsibly.**

It's time to level up

Raise your game with the 2023 Altima,[®] featuring a powerful available variable compression turbo engine that's a world's first.¹ Boost your tech with a massive new 12.3-inch touch-screen display and wireless connectivity.^{2,3} And with standard Nissan Safety Shield[®] 360, your confidence is looking up, too.⁴ The exhilarating 2023 Nissan Altima. It's right where you belong.





12.3-inch color touch-screen display and available wireless connectivity

Your favorite maps, apps, and more never looked better on Altima's 12.3-inch color touch-screen display^{2, 3, 5}. It's so large, it can even split the screen, so you won't miss out. And with available wireless connectivity, you can kiss those cords and cables goodbye.⁶

Wireless Apple CarPlay⁷ integration^{2, 3}

Wireless Android Auto™ compatibility^{2, 3}

Wireless charger^{3, 6}

NissanConnect® with Wi-Fi Hotspot for up to 7 devices^{2, 3, 6}



Intelligent All-Wheel Drive

Snow day? Go day! Part of Nissan Intelligent Mobility, available Intelligent All-Wheel Drive continuously monitors road conditions and responds in an instant, sending power to the wheels that need it most.^{3, 7, 8}

248
horsepower⁹

273
lb-ft of torque⁹

34
hwy mpg¹⁰



The world's first production variable compression turbo engine^{1, 3}

While other engines must deal with a fixed compression ratio, the VC-Turbo[®] constantly adapts. It raises or lowers its pistons' reach seamlessly, variably, and continuously to provide an ideal balance of power and efficiency for every driving situation.¹⁰ An engineering marvel, it's the world's first production variable compression turbo engine.¹



ProPILOT Assist

Enjoy the drive even more. With the groundbreaking ProPILOT Assist, your Altima® helps keep you centered in your lane, and following the car ahead at a preset distance. It can even bring your Altima to a full stop based on the highway traffic flow and can bring you back up to speed when traffic starts moving again.^{3, 11}

Helps keep you centered in gentle curves¹¹

Maintains your preset speed and distance¹¹

Can even come to a complete stop¹¹



Nissan Safety Shield® 360

Nissan Intelligent Mobility is changing how you move forever with technology that makes you feel more connected, confident, and excited.⁷

As part of Nissan Intelligent Mobility, Safety Shield 360 includes features that can help you see more, sense more, and can give you an assist when you need it. The following features come standard on every 2023 Nissan Altima.^{4, 7}

Automatic Emergency Braking with Pedestrian Detection¹²

Rear Automatic Braking¹³

Rear Cross Traffic Alert¹⁴

Blind Spot Warning¹⁵

Lane Departure Warning¹⁶

High Beam Assist

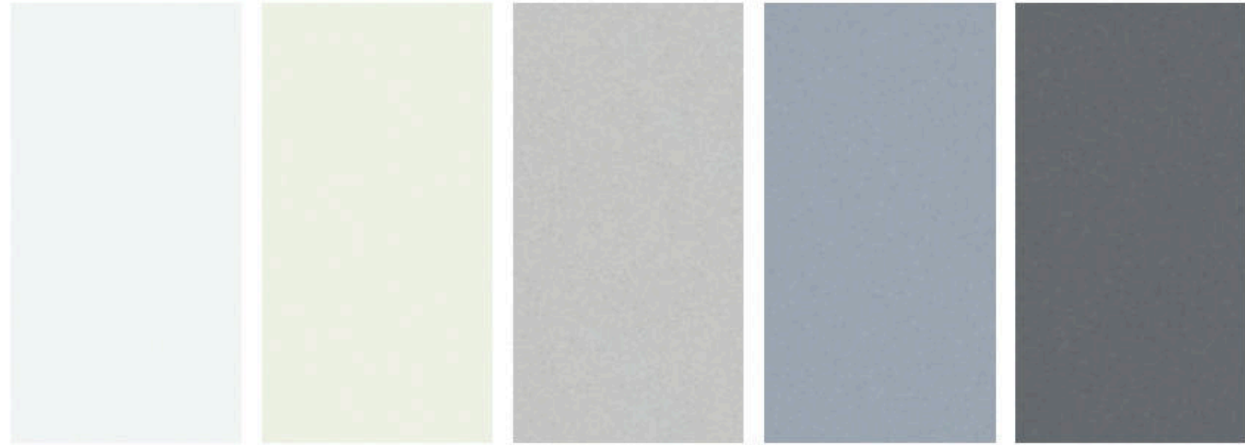


Intelligent Around View® Monitor

Four cameras make parking easy with a virtual composite 360° bird's-eye view of your Altima. You can select from split-screen close-ups of the front, rear, and curbside views for a better look. It also gives you an on-screen heads-up when it detects moving objects near your vehicle.^{3, 17, 18}



CHOOSE YOUR COLOR



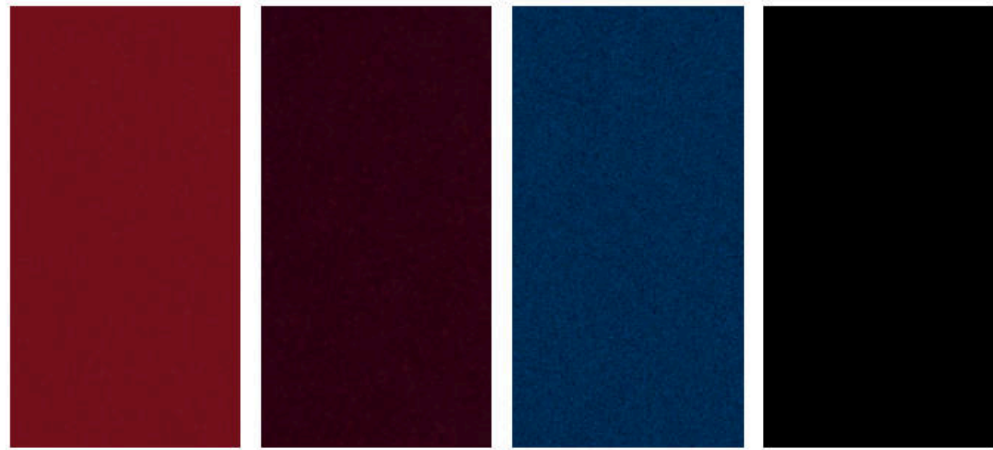
Glacier White Pearl White TriCoat¹⁹ Brilliant Silver Metallic Gray Sky Pearl¹⁹ Gun Metallic

S SV SR SL S SV SR SL S SV SR SL S SV SR SL S SV SR SL

Charcoal Cloth	<input checked="" type="checkbox"/>																		
Gray Cloth		<input checked="" type="checkbox"/>																	
Charcoal Sport Cloth				<input checked="" type="checkbox"/>															
Charcoal Sport Leather ²⁰					<input checked="" type="checkbox"/>														
Gray Leather ²⁰													<input checked="" type="checkbox"/>						
Charcoal Leather ²⁰																			<input checked="" type="checkbox"/>

Standard
 Optional

Nissan has taken care to ensure that the color swatches presented here are the closest possible representations of actual vehicle colors. Swatches may vary slightly due to the printing process and whether viewed in daylight, fluorescent or incandescent light. Please see the actual colors at your dealer.



Scarlet Ember Tintcoat¹⁹ Garnet Pearl Metallic Deep Blue Pearl Super Black

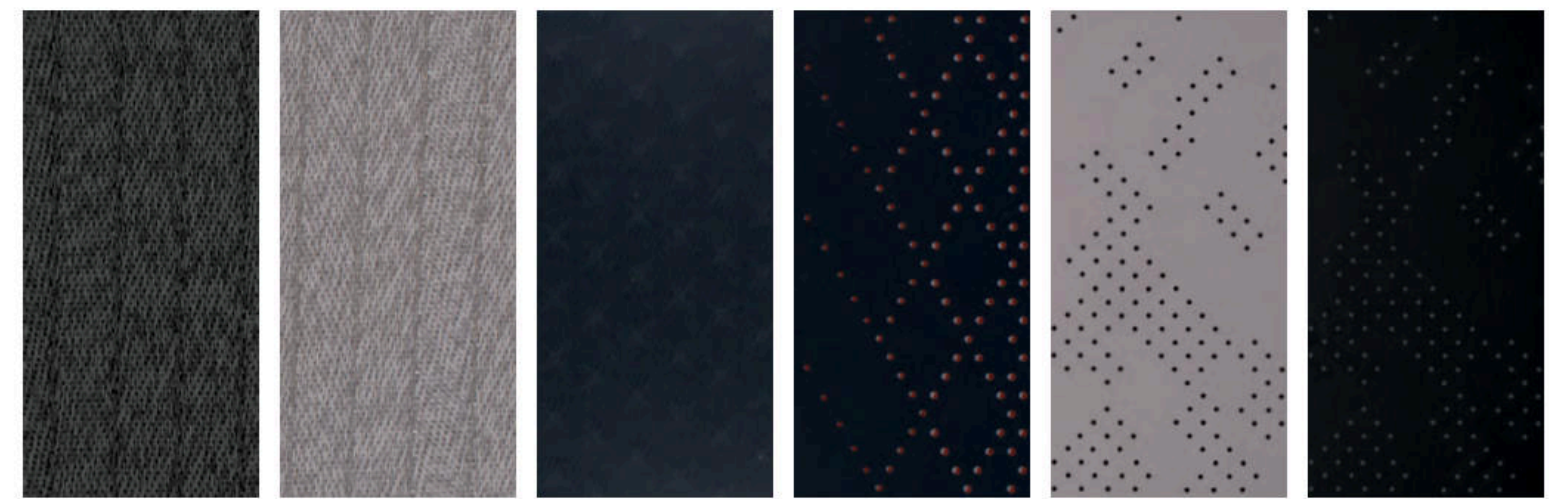
S SV SR SL S SV SR SL S SV SR SL S SV SR SL

Charcoal Cloth				<input checked="" type="checkbox"/>															
Gray Cloth					<input checked="" type="checkbox"/>														
Charcoal Sport Cloth								<input checked="" type="checkbox"/>											
Charcoal Sport Leather ²⁰									<input checked="" type="checkbox"/>										
Gray Leather ²⁰																			<input checked="" type="checkbox"/>
Charcoal Leather ²⁰																			<input checked="" type="checkbox"/>

CHOOSE YOUR INTERIOR



Nissan Altima[®] SR VC-Turbo[®] shown in Charcoal Sport Leather.²⁰



Charcoal Cloth S|SV Gray Cloth SV Charcoal Sport Cloth SR Charcoal Sport Leather²⁰ SR Gray Leather²⁰ SL Charcoal Leather²⁰ SL

CHOOSE YOUR TRIM LEVEL

S

2.5-liter Direct Injection Gasoline (DIG) engine, Front-Wheel Drive (FWD), Xtronic CVT® (Continuously Variable Transmission), Cruise control, Intelligent Forward Collision Warning,²¹ Automatic Emergency Braking with Pedestrian Detection,¹² Lane Departure Warning,¹⁶ Blind Spot Warning,¹⁵ Rear Cross Traffic Alert,¹⁴ Rear Automatic Braking,¹⁵ Rear Sonar System,²² RearView Monitor,²³ Hill start assist, High Beam Assist, Intelligent Driver Alertness,²⁴ 16" Steel wheels with wheel covers, Intelligent Auto Headlights, LED projector headlights with LED signature Daytime Running Lights, Dual power outside mirrors, Air conditioning, Power windows, Power door locks, Rear Door Alert,²⁵ Remote keyless entry with push button ignition, Remote Engine Start System,²⁶ Tilt and telescoping steering column, 6-way adjustable driver's seat, 60/40-split fold-down rear seatbacks, Cloth seat trim, 5" Multi-function information display, 7" Touch-screen display, Voice Recognition,⁵ Siri® Eyes Free,² Hands-free Text Messaging Assistant,²⁷ Bluetooth® Hands-free Phone System,² Audio system with six speakers, Auxiliary audio input jack,⁶ One USB-A port,⁶ Streaming Audio via Bluetooth,³² Nissan Advanced Air Bag System,²⁸ Tire Pressure Monitoring System (TPMS) with Easy-Fill Tire Alert,^{29,30} Vehicle Security System



SV INCLUDES S EQUIPMENT PLUS:

Available Intelligent All-Wheel Drive,⁸ Electronic parking brake,³¹ Active Brake Limited Slip,³² 17" Machine-finished aluminum-alloy wheels, Nissan Intelligent Key® with Push Button Ignition, 8-way power adjustable driver's seat, Piano Black interior trim, Wood-tone finishers, 7" Advanced Drive-Assist™ Display,³³ NissanConnect® 8" color display with multi-touch control,² Apple CarPlay® integration,² Android Auto™ compatibility,² Two USB-A ports and two USB-C ports,⁶ SiriusXM Radio³⁴



SR/SR VC-TURBO® INCLUDES SV EQUIPMENT PLUS:

Paddle shifters with manual shift mode, Sport-tuned suspension,³⁵ Active Ride Control, Intelligent Trace Control,³⁶ 19" Machine-finished SR aluminum-alloy wheels, Dark chrome V-Motion grille, Body-color door handles, Black outside mirrors, Charcoal rear diffuser, Dual chrome exhaust finishers, Sport Cloth seat trim, Leather-wrapped steering wheel and shift knob, Silver geometric trim

SR VC-TURBO ADDS:

2.0-liter Variable Compression Turbo (VC-Turbo®) engine, Electronic parking brake, ProPILOT Assist,¹¹ Intelligent Lane Intervention,¹⁶ Intelligent Around View® Monitor,¹⁷ Automatic brake hold, Traffic Sign Recognition,³⁷ 19" Aluminum-alloy wheels, Power sliding glass moonroof, Rear spoiler, Dual Zone Automatic Temperature Control, Rear passenger air conditioning vents, Remote Engine Start System with Intelligent Climate Control,²⁶ 4-way power adjustable front-passenger's seat, Driver's seat power lumbar support, Sport Leather-appointed seats, Heated front seats and steering wheel, Carbon-fiber look trim, NissanConnect® 12.3" color display with multi-touch control,² Nissan Door to Door Navigation,⁵ SiriusXM Traffic and Travel Link,² NissanConnect® Services powered by SiriusXM,² Wi-Fi Hotspot,² Wireless Apple CarPlay® integration,² Wireless Android Auto™ compatibility,² Bose Premium Audio System with nine speakers, Active Noise Cancellation, Wireless charger⁶ (**SR VC-Turbo available in Front-Wheel Drive models only**)



SL INCLUDES SV EQUIPMENT PLUS:

ProPILOT Assist,¹¹ Intelligent Lane Intervention,¹⁶ Intelligent Around View® Monitor,¹⁷ Active Ride Control, Intelligent Trace Control,³⁶ Automatic brake hold, Traffic Sign Recognition,³⁷ 19" Machine-finished aluminum-alloy wheels, Outside mirrors with LED turn signal indicators, Power sliding glass moonroof, Acoustic laminated glass, Dual chrome exhaust finishers, Dual Zone Automatic Temperature Control, Rear passenger air conditioning vents, Passenger-side front-window one-touch auto-up/down, Remote Engine Start System with Intelligent Climate Control,²⁶ Sun visors with illuminated vanity mirrors and extensions, 4-way power adjustable front-passenger's seat, Driver's seat power lumbar support, Leather-appointed seats, Heated front seats and steering wheel, Leather-wrapped steering wheel and shift knob, Dark Teak wood-tone trim, NissanConnect® 12.3" color display with multi-touch control,² Nissan Door to Door Navigation,⁵ SiriusXM Traffic and Travel Link,² NissanConnect® Services powered by SiriusXM,² Wi-Fi Hotspot,² Wireless Apple CarPlay® integration,² Wireless Android Auto™ compatibility,² Bose Premium Audio System with nine speakers, Wireless charger⁶



CHOOSE YOUR PACKAGE

SV PREMIUM PACKAGE

Electronic parking brake,³¹ ProPILOT Assist,¹¹ Intelligent Lane Intervention,¹⁶ Active Ride Control, Intelligent Trace Control,³⁶ Automatic brake hold, Traffic Sign Recognition,³⁷ Body-color outside mirrors, Power sliding glass moonroof, Dual chrome exhaust finishers, Driver's seat power lumbar support, Heated front seats, Leather-wrapped steering wheel and shift knob, Dark Teak wood-tone trim, NissanConnect® 12.3" color display with multi-touch control,² Nissan Door to Door Navigation,⁵ SiriusXM Traffic and Travel Link,² NissanConnect® Services powered by SiriusXM,² Wi-Fi Hotspot,² Wireless Apple CarPlay® integration,² Wireless Android Auto™ compatibility,² Wireless charger⁶



SR PREMIUM PACKAGE

Power sliding glass moonroof, 4-way power adjustable front-passenger's seat, Driver's seat power lumbar support, Sport Leather-appointed seats, Heated front seats, Carbon-fiber look trim, NissanConnect® 12.3" color display with multi-touch control,² Nissan Door to Door Navigation,⁵ SiriusXM Traffic and Travel Link,² NissanConnect® Services powered by SiriusXM,² Wi-Fi Hotspot,² Wireless Apple CarPlay® integration,² Wireless Android Auto™ compatibility,² Wireless charger⁶



GENUINE NISSAN ACCESSORIES

Turn brand-new into all you

Every Genuine Nissan Accessory is custom-fit, custom-designed, and durability-tested. Each one is backed by Nissan's 3-year/36,000-mile (whichever occurs first) limited warranty (if installed by dealer at the time of new vehicle purchase) and can be financed when installed by dealer at time of new vehicle purchase.³⁸

For more information and to shop online for Altima® Genuine Nissan Accessories, go to bit.ly/23Altima-Accys



Nissan Altima® SL shown in Scarlet Ember Tintcoat with 19" Aluminum-alloy wheels, Splash Guards (4-piece set), Exterior Ground Lighting w/ Logo, Chrome Body Side Moldings, Chrome Rear Bumper Protector, and Rear Spoiler.

CHOOSE YOUR ACCESSORIES

A. All-Season Floor Mats — High Wall Liners
Skip the mud — and other messes.

B. Cargo Blocks/Stabilizers³⁹
Protect your cargo and your trunk.

C. Sliding Trunk Organizer Tray
Bring some order to your cargo area.

D. Illuminated Kick Plates
Fewer scuffs and a grand entry, every time.

E. Dual Camera Drive Recorder^{40, 41}
Protect yourself and your Altima.® Catches what's in front and inside the cabin.

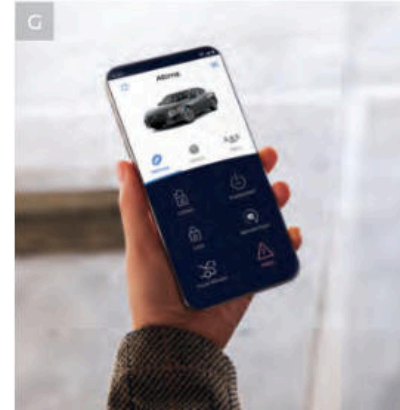
F. Shopping Bag Hook
Secure your groceries and keep it together.

G. Virtual Key⁴²
Lock/unlock and start your Altima all without a key. You can even share it with friends!

H. Trash Bin⁴¹
A tidy Altima is a happy Altima.

Additional Accessories:

- Sport Carpeted Floor Mats
- All-Season Trunk Area Protector
- Hideaway Trunk Cargo Net
- Clear Rear Bumper Protector
- Black Rear Bumper Protector
- Wheel Locks
- First-Aid Kit
- Interior Accent Lighting
- Frameless Auto-Dimming Rearview Mirror w/ Universal Remote
- And More



SPECIFICATIONS

Engines	S	SV	SR	SR VC-Turbo	SL
2.5-liter Direct Injection Gasoline (DIG) DOHC 16-valve 4-cylinder engine 188 ³⁵ /182 ³² hp @ 6,000 rpm 180 ³⁵ /178 ³² lb-ft of torque @ 3,600 rpm	■	■	■		■
2.0-liter Variable Compression Turbo (VC-Turbo®) DOHC 16-valve 4-cylinder engine 248/236 hp @ 5,600 rpm ⁹ 273/267 lb-ft of torque @ 4,000 rpm ⁹				■	
Continuously Variable Valve Timing Control System (CVTCS)	■	■	■	■	■
Electronic sequential multi-point fuel injection				■	
Direct Injection Gasoline (DIG)	■	■	■	■	■
Drivetrain					
Front-Wheel Drive (FWD)	■	■	■	■	■
Intelligent All-Wheel Drive (AWD) ⁸		A	A		A
Xtronic CVT® (Continuously Variable Transmission)	■	■	■	■	■
Paddle shifters with manual shift mode			■	■	
Brakes					
Front vented disc/solid rear disc brakes	■	■	■	■	■
Anti-lock Braking System (ABS)	■	■	■	■	■
Electronic Brake force Distribution (EBD)	■	■	■	■	■
Brake Assist ⁴³	■	■	■	■	■
Electronic parking brake		A	A	■	■
Suspension/Steering					
Independent strut front suspension	■	■	■	■	■
Multi-link independent rear suspension	■	■	■	■	■
Twin-tube front struts/monotube rear shock absorbers	■	■	■	■	■
Sport-tuned suspension ³⁵	■	■	■	■	■
Front and rear stabilizer bars	■	■	■	■	■
Dual pinion electric-powered steering	■	■	■	■	■
Driver Assistance Technologies					
Cruise control	■	■	■	■	■
ProPILOT Assist ¹¹		P1		■	■
Intelligent Forward Collision Warning ²¹	■	■	■	■	■
Automatic Emergency Braking with Pedestrian Detection ¹²	■	■	■	■	■
Lane Departure Warning ¹⁶	■	■	■	■	■
Intelligent Lane Intervention ¹⁶		P1		■	■
Blind Spot Warning ¹⁵	■	■	■	■	■
Rear Cross Traffic Alert ¹⁴	■	■	■	■	■
Rear Automatic Braking ¹³	■	■	■	■	■
Rear Sonar System ²²	■	■	■	■	■
RearView Monitor ²³	■	■	■	■	■
Intelligent Around View® Monitor ¹⁷				■	■
Vehicle Dynamic Control (VDC) ⁴⁴ with Traction Control System (TCS)	■	■	■	■	■
Active Brake Limited Slip		A	A		A
Active Ride Control		P1	■	■	■
Intelligent Trace Control ³⁶		P1	■	■	■
Hill start assist	■	■	■	■	■
Automatic brake hold		P1	■	■	■
High Beam Assist	■	■	■	■	■
Traffic Sign Recognition ³⁷		P1	■	■	■
Intelligent Driver Alertness ²⁴	■	■	■	■	■

Wheels/Tires	S	SV	SR	SR VC-Turbo	SL
16" Steel wheels with wheel covers	■				
17" Machine-finished aluminum-alloy wheels		■			
19" Machine-finished SR aluminum-alloy wheels			■		
19" Aluminum-alloy wheels				■	
19" Machine-finished aluminum-alloy wheels					■
P215/60HR16 all-season tires	■				
P215/55VR17 all-season tires		■			
P235/40VR19 all-season tires			■	■	■
Exterior Features					
Active grille shutters	■	■	■	■	■
Intelligent Auto Headlights	■	■	■	■	■
LED projector headlights with LED signature Daytime Running Lights	■	■	■	■	■
Dual power outside mirrors	■	■	■	■	■
Outside mirrors with LED turn signal indicators				■	■
Power sliding glass moonroof		P1	P2	■	■
Acoustic laminated glass					■
Chrome V-Motion grille	■	■			
Dark chrome V-Motion grille			■	■	
Chrome door handles	■	■			■
Body-color door handles			■	■	
Body-color outside mirrors	■	P1			■
Black outside mirrors			■	■	
Rear spoiler				■	
Body-color rear diffuser	■	■			■
Charcoal rear diffuser			■	■	
Dual chrome exhaust finishers		P1	■	■	■
Comfort/Convenience					
Air conditioning	■	■	■		
Dual Zone Automatic Temperature Control				■	■
In-cabin microfilter	■	■	■	■	■
Rear passenger air conditioning vents				■	■
Power windows with one-touch driver-side auto-up/down	■	■	■	■	■
Passenger-side front-window one-touch auto-up/down					■
Power door locks with auto-locking feature	■	■	■	■	■
Rear Door Alert ²⁵	■	■	■	■	■
Remote keyless entry with push button ignition	■	■	■	■	■
Nissan Intelligent Key® with Push Button Ignition			■	■	■
Remote Engine Start System ²⁶	■	■	■		
Remote Engine Start System with Intelligent Climate Control ²⁶				■	■
Tilt and telescoping steering column	■	■	■	■	■
Variable intermittent speed-sensitive windshield wipers	■	■	■	■	■
Sun visors with illuminated vanity mirrors and extensions			■	■	■
Map lights and rear reading lights	■	■	■	■	■

■ Standard
A Intelligent All-Wheel Drive (AWD)
P1 Part of SV Premium Package
P2 Part of SR Premium Package

Seating/Appointments	S	SV	SR	SR VC-Turbo	SL
6-way adjustable driver's seat	■				
8-way power adjustable driver's seat		■		■	■
4-way power adjustable front-passenger's seat			P2	■	■
Driver's seat power lumbar support		P1	P2	■	■
60/40-split fold-down rear seatbacks	■	■	■	■	■
Cloth seat trim	■	■			
Sport Cloth seat trim			■	■	
Sport Leather-appointed seats			P2	■	
Leather-appointed seats					■
Heated front seats		P1	P2	■	■
Heated steering wheel				■	■
Leather-wrapped steering wheel		P1	■	■	■
Leather-wrapped shift knob		P1	■	■	■
Piano Black interior finishers		■	■	■	■
Wood-tone trim		■			
Silver geometric trim			■		
Carbon-fiber look trim			P2	■	
Dark Teak wood-tone trim		P1			■
Infotainment					
5" Multi-function information display	■				
7" Advanced Drive-Assist™ Display ³³		■	■	■	■
7" Touch-screen display	■				
NissanConnect® 8" color display with multi-touch control ²		■	■		
NissanConnect® 12.3" color display with multi-touch control ²		P1	P2	■	■
Nissan Door to Door Navigation with 5-year trial access to Premium Traffic Included ⁵		P1	P2	■	■
SiriusXM Traffic and Travel Link with 3-month trial access included ²		P1	P2	■	■
NissanConnect® Services powered by SiriusXM with 5-year trial access to Select and Plus packages and 6-month trial access to Premium package ²		P1	P2	■	■
Wi-Fi Hotspot ²		P1	P2	■	■
Voice Recognition ⁵	■	■	■	■	■
Apple CarPlay® Integration ²		■	■	■	■
Wireless Apple CarPlay® integration ²		P1	P2	■	■
Android Auto™ compatibility ²		■	■	■	■
Wireless Android Auto™ compatibility ²		P1	P2	■	■
Siri® Eyes Free ²	■	■	■	■	■
Hands-free Text Messaging Assistant ²⁷	■	■	■	■	■
Bluetooth® Hands-free Phone System ²	■	■	■	■	■
AM/FM audio system with six speakers	■	■	■		
Bose Premium Audio System with nine speakers				■	■
Active Noise Cancellation				■	
Steering wheel-mounted audio controls	■	■	■	■	■
Speed-sensitive volume control	■	■	■	■	■
Auxiliary audio input jack ⁶	■	■	■		
One USB-A port ⁶		■	■		
Two USB-A ports and two USB-C ports ⁶		P1	P2	■	■
Wireless charger ⁶					
SiriusXM Radio with 3-month subscription included ²		■	■	■	■
Streaming Audio via Bluetooth® ²	■	■	■	■	■

Safety	S	SV	SR	SR VC-Turbo	SL
Nissan Advanced Air Bag System with dual-stage supplemental front air bags with seat-belt and occupant-classification sensors ²⁸	■	■	■	■	■
Seat-mounted side-impact supplemental air bags for front- and rear-seat outboard occupants ²⁸	■	■	■	■	■
Driver and front-passenger supplemental knee air bags ²⁸	■	■	■	■	■
Roof-mounted curtain side-impact supplemental air bags with rollover sensor for front- and rear-seat outboard occupant head protection ²⁸	■	■	■	■	■

DIMENSIONS/CAPACITIES/WEIGHTS/MPG

Exterior Dimensions - Inches					
Wheelbase	111.2				
Overall length	192.9				
Overall width	72.9				
Overall height	56.7-57.4 (depending on vehicle configuration)				
Track width	62.8-63.6 (depending on vehicle configuration)				
Interior Dimensions (Front/Rear) - Inches					
Head room without moonroof	39.1/36.9		Hip room	54.7/54.5	
Head room with moonroof	38.0/36.7		Leg room	43.8/35.2	
Shoulder room	58.2/57.1				
Capacities					
Seating capacity	5				
Interior passenger volume without moonroof (cu. ft.)	100.6				
Interior passenger volume with moonroof (cu. ft.)	98.8				
Cargo capacity (cu. ft.) ³⁹	15.4				
Fuel tank (gals.)	16.2 (FWD)/16.0 (AWD)				
2023 EPA Fuel Economy Estimates ¹⁴					
City/Hwy/Combined MPG	S	SV	SR	SR VC-Turbo	SL
2.5L FWD	27/39/32	27/39/32	27/37/31	-	27/37/31
2.5L AWD	-	26/36/30	26/36/30	-	26/36/30
2.0L VC-Turbo FWD	-	-	-	25/34/29	-

NISSAN ROADSIDE ASSISTANCE

Your peace of mind is on us. For 36 months or 36,000 miles, whichever comes first, your new Nissan vehicle is covered for the following:⁴⁵

- Flat-tire changes
- Trip Interruption benefits
- Jump starts
- Vehicle lockouts
- Emergency fuel delivery

Follow Nissan on:



visit [NissanUSA.com/altima](https://www.nissanusa.com/altima)
PRINTED IN USA



Sign up to get the latest on
Nissan vehicles, news, and events.

<https://www.nissanusa.com/brochures/request-brochure.html>