



ALTIMA®

2024



¹Available feature. ²Use feature only when safe and legal. Compatible device and service required. Subject to third party service availability. For more information, see [NissanUSA.com/connect/legal](https://www.nissanusa.com/connect/legal). ³World's first production variable compression turbo engine launched by Nissan Motor Co., Ltd. in 2018. ⁴Nissan Safety Shield technologies can't prevent all collisions or warn in all situations. See Owner's Manual for important safety information. ⁵Extra cost option. ⁶Never program while driving. GPS mapping may not be detailed in all areas or reflect current road status. ⁷Driving is serious business and requires your full attention. If you have to use the connected device while driving, exercise extreme caution at all times so full attention may be given to vehicle operation. Smartphone or other external device not included. ⁸Feature availability varies by vehicle model year, model, trim level, packaging and options. Connectivity service may be required. Alexa is Amazon's cloud-based voice service. Subject to third party service availability. Amazon, Alexa, Echo, and all related marks are trademarks of [Amazon.com](https://www.amazon.com), Inc. or its affiliates. For more information see [NissanUSA.com/connect/legal](https://www.nissanusa.com/connect/legal). ⁹Intelligent All-Wheel Drive cannot prevent collisions or provide enhanced traction in all conditions. Always monitor traffic and weather conditions. ¹⁰Availability of features vary by vehicle model year, model, trim level, packaging, and options. Please see Owner's Manual for important feature information. ¹¹VC-Turbo® engine horsepower and torque ratings: 248 hp and 273 lb-ft of torque ratings when using 93-octane fuel; 236 hp and 267 lb-ft of torque ratings when using 87-octane fuel. ¹²2024 EPA Fuel Economy Estimates: 27 City MPG / 39 Highway MPG / 32 Combined MPG for Altima® S, SV FWD. 27 City MPG / 37 Highway MPG / 31 Combined MPG for Altima® SR, SL FWD. 26 City MPG / 36 Highway MPG / 30 Combined MPG for Altima® SV, SR, SL AWD. 25 City MPG / 34 Highway MPG / 29 Combined MPG for Altima® SR FWD VC-Turbo. Fuel economy estimates based on 87-octane fuel. Actual mileage may vary with driving conditions. Use for comparison only. ¹³ProPILOT Assist cannot prevent collisions. It is the driver's responsibility to be in control of the vehicle at all times. Always monitor traffic conditions and keep both hands on the steering wheel. System operates only when lane markings are detected. Does not function in all weather, traffic and road conditions. System has limited control capability and the driver may need to steer, brake or accelerate at any time to maintain safety. See Owner's Manual for safety information. ¹⁴Automatic Emergency Braking with Pedestrian Detection cannot prevent all collisions and may not provide warning or braking in all conditions. Driver should monitor traffic conditions and brake as needed to prevent collisions. See Owner's Manual for safety information. ¹⁵Rear Automatic Braking cannot prevent all collisions and may not provide warning or braking in all conditions. Driver should always turn and check surroundings before driving and brake as needed to prevent collisions. See Owner's Manual for safety information. ¹⁶Rear Cross Traffic Alert may not detect all vehicles. See Owner's Manual for safety information. ¹⁷Blind Spot Warning cannot prevent collisions and may not detect every object or warn in all situations. Driver should always turn and look before changing lanes. See Owner's Manual for safety information. ¹⁸Lane Departure Warning and Intelligent Lane Intervention only operate when lane markings are able to be detected. See Owner's Manual for safety information. ¹⁹Intelligent Around View® Monitor cannot eliminate blind spots and may not detect every object. Driver should always turn and check surroundings before driving. See Owner's Manual for safety information. ²⁰Virtual composite 360° view. ²¹Leather appointments. ²²Intelligent Forward Collision Warning cannot prevent collisions. See Owner's Manual for safety information. ²³Sonar System may not detect every object. Driver should always check surroundings before driving. See Owner's Manual for safety information. ²⁴RearView Monitor may not detect every object and does not eliminate blind spots or warn of moving objects. See Owner's Manual for safety information. ²⁵Intelligent Driver Alertness cannot provide a warning in every situation. See Owner's Manual for safety information. ²⁶Rear Door Alert System does not detect people or cargo. Always check rear seat before exiting. See Owner's Manual for safety information. ²⁷Remote Engine Start System to be used only in accordance with laws or rules in effect in your vehicle's location. ²⁸Use Hands Free Text Messaging when parked in a safe location. If you must use while driving, monitor traffic conditions and keep both hands on the steering wheel to prevent collisions. Compatible device required. Message and data rates may apply. ²⁹Air bags are only a supplemental restraint system. Always wear your seat belt. Rear-facing child restraints should not be placed in the front-passenger's seat. All children 12 and under should ride in the rear seat properly secured in child restraints, booster seats, or seat belts according to their size. Air bags will only inflate in certain accidents. See Owner's Manual for safety information. ³⁰Tire Pressure Monitoring System is not a substitute for regular tire pressure checks. See Owner's Manual for safety information. ³¹Vehicle must be on for the Easy-Fill Tire Alert to operate. ³²Available on AWD models and on SV FWD, SR VC-Turbo, and SL models. ³³AWD models only. ³⁴Information displayed is dependent on how vehicle is equipped. Driving is serious business and requires your full attention. If you have to use the feature while driving, exercise extreme caution at all times so full attention may be given to vehicle operation. ³⁵FWD models only. ³⁶Intelligent Trace Control cannot prevent collisions or loss of control. Driver should remain in control of vehicle at all times. See Owner's Manual for safety information. ³⁷Traffic Sign Recognition may not detect and read all traffic signs in all conditions. Driver should monitor all traffic signs and obey all traffic laws. See Owner's Manual for details. ³⁸Nissan vehicle with SiriusXM with 360L capability: SiriusXM with 360L trial period is included with the purchase or lease of a new Nissan vehicle if: (i) vehicle is equipped with SiriusXM with 360L capability and (ii) vehicle is purchased or leased from new Nissan dealer stock. Trial period begins on the purchase or lease date of the qualifying new Nissan vehicle. SiriusXM with 360L is owned and operated by SiriusXM, use of SiriusXM account and its services and features are subject to the SiriusXM Customer Agreement and Privacy Policy available at [siriusxm.com](https://www.siriusxm.com), and are not within Nissan's control. Should SiriusXM terminate, change, or restrict service or features, service or features may be suspended or terminated without notice or with no liability to Nissan or its partners or agents. Nissan and its partners or agents are also not responsible for associated costs or other third party charges that may be required for continued operation due to cellular network unavailability, restriction, or termination (including equipment replacements/upgrades, if available, or roaming charges on alternative networks). Trial period is subject to change or early termination at any time without notice. SiriusXM and related logos are trademarks of Sirius XM Radio Inc. and its respective subsidiaries. SiriusXM and SiriusXM with 360L: Service will automatically stop at the end of your trial subscription period unless you decide to continue service. Trial is non-transferable. If you do not wish to enjoy your trial, you can cancel by calling the number below. All SiriusXM services require a subscription, each sold separately by SiriusXM after the trial period. Service subject to the SiriusXM Customer Agreement and Privacy Policy, visit [siriusxm.com](https://www.siriusxm.com) for complete terms and how to cancel which includes online methods or calling 1-866-635-2349. Some services and features are subject to device capabilities and location availability. Satellite service not available in AK & HI. Certain features and/or content may not be available in vehicles with SiriusXM with 360L unless an active data connection is enabled in the vehicle. Content varies by SiriusXM subscription package. All fees, content and features are subject to change. SiriusXM and related logos are trademarks of Sirius XM Radio Inc. and its respective subsidiaries. ³⁹For complete information concerning warranty coverage, conditions, limitations, and exclusions, see your Nissan dealer, [parts.NissanUSA.com](https://www.parts.nissanusa.com) and read your vehicle's Warranty Information Booklet. ⁴⁰Compatible smartphone required. Virtual Key to be used only in accordance with laws or rules in effect in your vehicle's location. Actual maximum distance for operation will vary depending on obstructions between compatible device and vehicle. ⁴¹Only front kick plates illuminate. ⁴²Dual Camera Drive Recorder to be used only in accordance with any laws or rules in effect in your vehicle's location that may apply to audio or video recordings of drivers and passengers. ⁴³Vehicle shown is for illustrative purposes only. Not representative of brochure's model year/model. ⁴⁴Cargo shown for display purposes only. Cargo and load capacity limited by weight and distribution. Always secure cargo. ⁴⁵Brake Assist cannot prevent all collisions and may not provide warning or braking in all conditions. Driver should monitor traffic conditions and brake as needed to prevent collisions. See Owner's Manual for safety information. ⁴⁶Vehicle Dynamic Control cannot prevent collisions due to abrupt steering, carelessness, or dangerous driving techniques. It should remain on when driving, except when freeing the vehicle from mud or snow. See Owner's Manual for safety information. ⁴⁷Roadside assistance coverage period varies by model year/model. For complete information concerning warranty coverage, conditions and exclusions, see your Nissan dealer and read the warranty information booklet for the model year/model. ⁴⁸Limited availability. Contact your local dealer for inventory information. Amazon, Alexa, Echo, and all related marks are trademarks of [Amazon.com](https://www.amazon.com), Inc. or its affiliates. Apple CarPlay, Siri, and Siri Eyes Free are registered trademarks of Apple, Inc. Bluetooth® word mark and logos are owned by Bluetooth SIG, Inc., and any use of such marks by Nissan is under license. Bose® is a registered trademark of The Bose Corporation. Facebook® is a registered trademark of Facebook, Inc. Google, Android Auto, Google Maps, YouTube Music and other marks are trademarks of Google LLC. To use Android Auto on your car display, you'll need an Android phone running Android 8 or higher, an active data plan, and the Android Auto app. To wirelessly use Android Auto on your car display, you need a compatible Android smartphone with an active data plan. You can check which smartphones are compatible at [g.co/androidauto/requirements](https://www.g.co/androidauto/requirements). Instagram® is a registered trademark of Instagram, LLC. The Sirius®, XM®, and SiriusXM® names and all related marks and logos are trademarks of Sirius XM Radio Inc. All other trademarks are the property of their respective owners. Twitter® is a registered trademark of Twitter, Inc. This brochure is intended for general descriptive and informational purposes only. It is subject to change and does not constitute an offer, representation or warranty (express or implied) by Nissan North America, Inc. Interested parties should confirm the accuracy of any information in this brochure as it relates to a vehicle directly with Nissan North America, Inc. before relying on it to make a purchase decision. Nissan North America, Inc. reserves the right to make changes, at any time, without prior notice, in prices, colors, materials, equipment, specifications, and models and to discontinue models or equipment. Due to continuous product development and other pre- and post-production factors, actual vehicle, materials and specifications may vary from this brochure. Some vehicles shown with optional equipment. See the actual vehicle for complete accuracy. Availability and delivery times for particular models or equipment may vary. Specifications, options and accessories may differ in Hawaii, U.S. territories and other countries. For additional information on availability, options or accessories, see your Nissan dealer or contact Nissan North America, Inc. At [NissanUSA.com](https://www.NissanUSA.com), you'll find virtual product demonstrations, a way to "build your own Nissan," a dealer locator, and more information about key Nissan support services. Or if you'd prefer, call **1-800-NISSAN-3** for answers to specific questions about Altima® or any other Nissan vehicle. The Nissan names, logos, product names, feature names, and slogans are trademarks owned by or licensed to Nissan Motor Co. Ltd. and/or its North American subsidiaries. Other trademarks and trade names are those of their respective owners. **Always wear your seat belt, and please drive responsibly.** ©2023 Nissan North America, Inc. 24 Altima.®

Step into your moment

Your 2024 Nissan Altima® has arrived. Slip inside, and find expressive style and connection at your fingertips with available wireless capability, next-generation voice control, and a stunning 12.3-inch touch-screen display.^{1,2} Accelerate your life with an available world's first production variable compression turbo engine.³ And with standard Nissan Safety Shield® 360, Altima's even got your back, sides, and front — nice.⁴





12.3-inch color touch-screen display¹
and available wireless connectivity²

Your favorite maps, apps, and more have never looked better than on Altima's 12.3-inch color touch-screen display.^{1, 2, 6} It's so large, it can even split the screen, so you won't miss out. And with available wireless connectivity, you can kiss those cords and cables goodbye.⁷

Wireless Apple CarPlay[®] integration^{1, 2}

Wireless Android Auto[™] compatibility^{1, 2}

Wireless charger^{1, 7}

NissanConnect[®] with Wi-Fi Hotspot for up to 7 devices^{1, 2, 7}

Alexa Built-in^{1, 2, 8}



Intelligent All-Wheel Drive^{1, 9}

Snow day? Go day! Part of Nissan Intelligent Mobility,[®] available Intelligent All-Wheel Drive continuously monitors road conditions and responds in an instant, sending power to the wheels that need it most.^{9, 10}

Up to
248
horsepower¹¹

Up to
273
lb-ft of torque¹¹

Up to
34
hwy mpg¹²



The world's first production variable
compression turbo engine^{1, 3}

Press on the gas of Altima[®] SR's available turbo 4-cylinder, and the pistons move to produce a lower compression ratio — similar to when a sprinter crouches to launch off the starting line. When you're cruising, the engine transforms to a higher compression ratio, like a long-distance runner, conserving energy.



ProPILOT Assist

Enjoy the drive even more. With the groundbreaking ProPILOT Assist, your Altima® helps keep you centered in your lane and following the car ahead at a preset distance. It can even bring your Altima to a full stop based on the highway traffic flow and can bring you back up to speed when traffic starts moving again.^{1,13}

Helps keep you centered in gentle curves¹³

Maintains your preset speed and distance¹³

Can even come to a complete stop¹³



Nissan Safety Shield® 360

Nissan Intelligent Mobility® is forever changing how you move with technology that makes you feel more connected, confident, and excited.¹⁰

As part of Nissan Intelligent Mobility, Safety Shield 360 includes features that can help you see more, sense more, and can give you an assist when you need it. The following features come standard on every 2024 Nissan Altima.^{4,10}

Automatic Emergency Braking with Pedestrian Detection¹⁴

Rear Automatic Braking¹⁵

Rear Cross Traffic Alert¹⁶

Blind Spot Warning¹⁷

Lane Departure Warning¹⁸

High Beam Assist

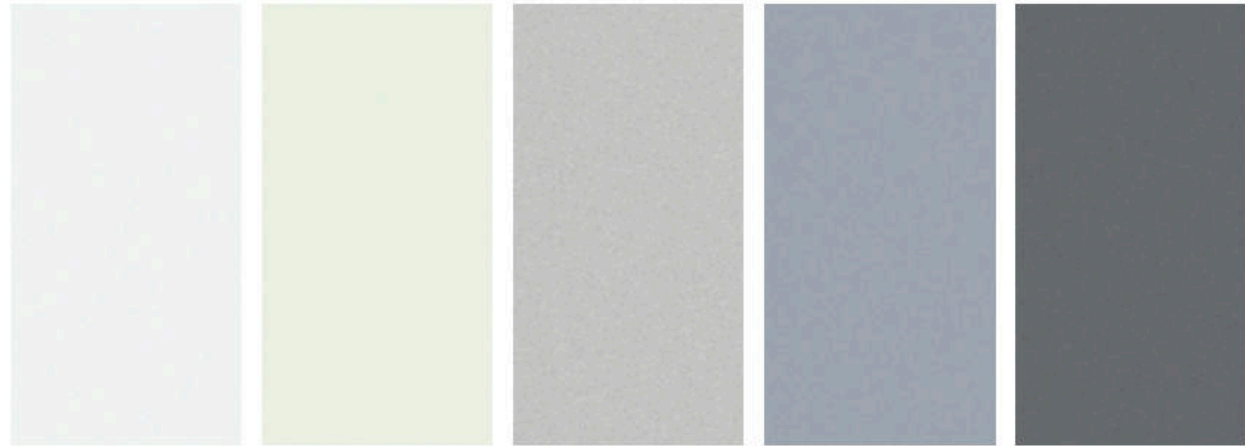


Intelligent Around View® Monitor

Four cameras make parking easy with a virtual composite 360° bird's-eye view of your Altima. You can select from split-screen close-ups of the front, rear, and curbside views for a better look. It also gives you an on-screen alert when it detects moving objects near your vehicle.^{1,19,20}

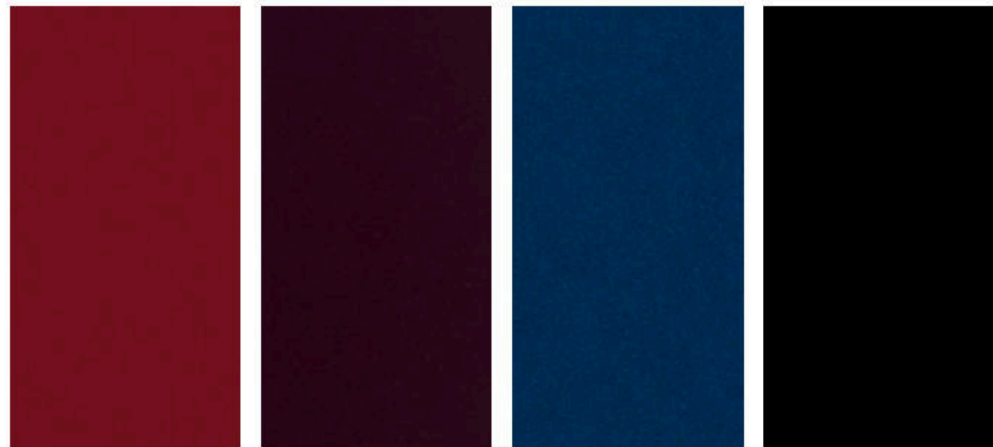


CHOOSE YOUR COLOR



Glacier White Pearl White TriCoat⁵ Brilliant Silver Metallic Gray Sky Pearl⁵ Gun Metallic

	S	SV	SR	SL
Charcoal Cloth	<input checked="" type="checkbox"/>			
Gray Cloth		<input checked="" type="checkbox"/>		
Charcoal Sport Cloth			<input checked="" type="checkbox"/>	
Charcoal Sport Leather ²¹			<input type="checkbox"/>	
Gray Leather ²¹				<input checked="" type="checkbox"/>
Charcoal Leather ²¹				<input checked="" type="checkbox"/>



Scarlet Ember Tintcoat⁵ Garnet Pearl Metallic Deep Blue Pearl Super Black

	S	SV	SR	SL
Charcoal Cloth		<input checked="" type="checkbox"/>		
Gray Cloth		<input checked="" type="checkbox"/>		
Charcoal Sport Cloth			<input checked="" type="checkbox"/>	
Charcoal Sport Leather ²¹			<input type="checkbox"/>	
Gray Leather ²¹				<input checked="" type="checkbox"/>
Charcoal Leather ²¹				<input checked="" type="checkbox"/>

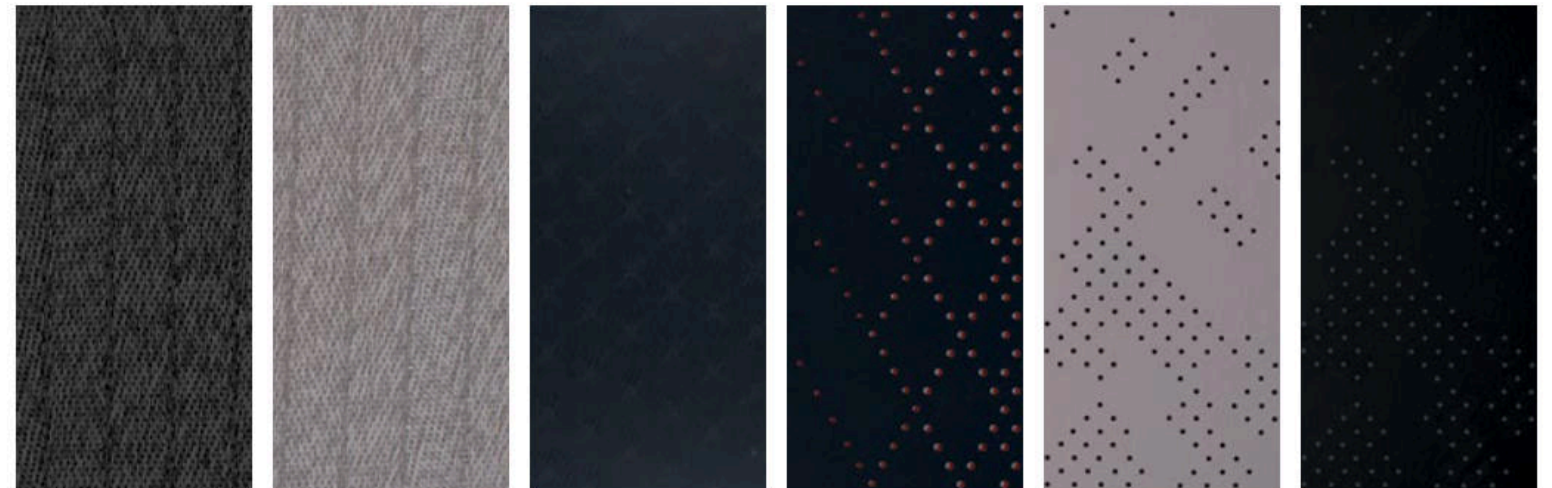
Standard
 Optional

Nissan has taken care to ensure that the digital color swatches presented here are the closest possible representation of actual vehicle colors. Swatches may vary slightly due to viewing light or screen quality. Please see the actual vehicle and colors at your dealer.

CHOOSE YOUR INTERIOR



Nissan Altima[®] SR VC-Turbo[®] shown in Charcoal Sport Leather.²¹



Charcoal Cloth S|SV Gray Cloth SV Charcoal Sport Cloth SR Charcoal Sport Leather²¹ SR Gray Leather²¹ SL Charcoal Leather²¹ SL

CHOOSE YOUR TRIM LEVEL

S

2.5-liter Direct Injection Gasoline (DIG) engine, Front-Wheel Drive (FWD), Xtronic CVT® (Continuously Variable Transmission), Cruise control, Intelligent Forward Collision Warning,²² Automatic Emergency Braking with Pedestrian Detection,¹⁴ Lane Departure Warning,¹⁸ Blind Spot Warning,¹⁷ Rear Cross Traffic Alert,¹⁶ Rear Automatic Braking,¹⁵ Rear Sonar System,²³ RearView Monitor,²⁴ Hill start assist, High Beam Assist, Intelligent Driver Alertness,²⁵ 16" Steel wheels with wheel covers, Intelligent Auto Headlights, LED projector headlights with LED signature Daytime Running Lights, Dual power outside mirrors, Air conditioning, Power windows, Power door locks, Rear Door Alert,²⁶ Remote keyless entry with push button ignition, Remote Engine Start System,²⁷ Tilt and telescoping steering column, 6-way adjustable driver's seat, 60/40-split fold-down rear seatbacks, Cloth seat trim, 5" Multi-function information display, 7" Touch-screen display, Voice Recognition,⁶ Siri® Eyes Free,² Hands-free Text Messaging Assistant,²⁸ Bluetooth® Hands-free Phone System,² Audio system with six speakers, Auxiliary audio input jack,⁷ One USB-A port,⁷ Streaming Audio via Bluetooth,² Nissan Advanced Air Bag System,²⁹ Tire Pressure Monitoring System (TPMS) with Easy-Fill Tire Alert,^{30,31} Vehicle Security System



SV INCLUDES S EQUIPMENT PLUS:

Available Intelligent All-Wheel Drive,⁹ Electronic parking brake,³² Active Brake Limited Slip,³³ 17" Machine-finished aluminum-alloy wheels, Nissan Intelligent Key® with Push Button Ignition, 8-way power adjustable driver's seat, Wood-tone trim, 7" Advanced Drive-Assist™ Display,³⁴ NissanConnect® 8" color display with multi-touch control,² Apple CarPlay® integration,² Android Auto™ compatibility,² Two USB-A ports and two USB-C ports,⁷ SiriusXM²



SR/SR VC-TURBO® INCLUDES SV EQUIPMENT PLUS:

Paddle shifters with manual shift mode, Sport-tuned suspension,³⁵ Active Ride Control, Intelligent Trace Control,³⁶ 19" Machine-finished SR aluminum-alloy wheels, Dark chrome V-Motion grille, Body-color door handles, Black outside mirrors, Charcoal rear diffuser, Dual chrome exhaust finishers, Sport cloth seat trim, Wrapped steering wheel and shift knob, Piano Black interior finishers, Silver geometric trim

SR VC-TURBO ADDS:

2.0-liter Variable Compression Turbo (VC-Turbo®) engine, Electronic parking brake,³² ProPILOT Assist,¹³ Intelligent Lane Intervention,¹⁸ Intelligent Around View® Monitor,¹⁹ Automatic brake hold, Traffic Sign Recognition,³⁷ 19" Aluminum-alloy wheels, Power sliding glass moonroof, Rear spoiler, Dual Zone Automatic Temperature Control, Rear passenger air conditioning vents, Remote Engine Start System with Intelligent Climate Control,²⁷ 4-way power adjustable front-passenger's seat, Driver's seat power lumbar support, Sport leather-appointed seats, Heated front seats and steering wheel, Carbon-fiber look trim, NissanConnect® 12.3" color display with multi-touch control,² Nissan Door to Door Navigation,⁶ SiriusXM Traffic and Travel Link,² NissanConnect® Services powered by SiriusXM,² Wi-Fi Hotspot,² Hello Nissan,² Alexa Built-in,^{2,8} Wireless Apple CarPlay® integration,² Wireless Android Auto™ compatibility,² Bose Premium Audio System with nine speakers, Active Noise Cancellation, Wireless charger,⁷ SiriusXM with 360L³⁸ **(SR VC-Turbo available in Front-Wheel Drive models only)**



SR VC-Turbo only

SR VC-Turbo only

SL INCLUDES SV EQUIPMENT PLUS:

ProPILOT Assist,¹³ Intelligent Lane Intervention,¹⁸ Intelligent Around View® Monitor,¹⁹ Active Ride Control, Intelligent Trace Control,³⁶ Automatic brake hold, Traffic Sign Recognition,³⁷ 19" Machine-finished aluminum-alloy wheels, Outside mirrors with LED turn signal indicators, Power sliding glass moonroof, Acoustic laminated front door glass, Dual chrome exhaust finishers, Dual Zone Automatic Temperature Control, Rear passenger air conditioning vents, Remote Engine Start System with Intelligent Climate Control,²⁷ Sun visors with illuminated vanity mirrors and extensions, 4-way power adjustable front-passenger's seat, Driver's seat power lumbar support, Leather-appointed seats, Heated front seats and steering wheel, Wrapped steering wheel and shift knob, Dark Teak wood-tone trim, NissanConnect® 12.3" color display with multi-touch control,² Nissan Door to Door Navigation,⁶ SiriusXM Traffic and Travel Link,² NissanConnect® Services powered by SiriusXM,² Hello Nissan,² Alexa Built-in,^{2,8} Wi-Fi Hotspot,² Wireless Apple CarPlay® integration,² Wireless Android Auto™ compatibility,² Bose Premium Audio System with nine speakers, Wireless charger,⁷ SiriusXM with 360L³⁸



CHOOSE YOUR PACKAGE

SV PREMIUM PACKAGE

Electronic parking brake,³² ProPILOT Assist,¹³ Intelligent Lane Intervention,¹⁸ Active Ride Control, Intelligent Trace Control,³⁶ Automatic brake hold, Traffic Sign Recognition,³⁷ Body-color outside mirrors, Power sliding glass moonroof, Dual chrome exhaust finishers, Driver's seat power lumbar support, Heated front seats, Wrapped steering wheel and shift knob, Dark Teak wood-tone trim, NissanConnect® 12.3" color display with multi-touch control,² Nissan Door to Door Navigation,⁶ SiriusXM Traffic and Travel Link,² NissanConnect® Services powered by SiriusXM,² Hello Nissan,² Alexa Built-in,^{2,8} Wi-Fi Hotspot,² Wireless Apple CarPlay® integration,² Wireless Android Auto™ compatibility,² Wireless charger,⁷ SiriusXM with 360L³⁸



SR PREMIUM PACKAGE

Power sliding glass moonroof, 4-way power adjustable front-passenger's seat, Driver's seat power lumbar support, Sport leather-appointed seats, Heated front seats, Carbon-fiber look trim, NissanConnect® 12.3" color display with multi-touch control,² Nissan Door to Door Navigation,⁶ SiriusXM Traffic and Travel Link,² NissanConnect® Services powered by SiriusXM,² Wi-Fi Hotspot,² Hello Nissan,² Alexa Built-in,^{2,8} Wireless Apple CarPlay® integration,² Wireless Android Auto™ compatibility,² Wireless charger,⁷ SiriusXM with 360L³⁸



GENUINE NISSAN ACCESSORIES

Turn brand-new into all you

Every Genuine Nissan Accessory is custom-fit, custom-designed, and durability-tested. Each one is backed by Nissan's 3-year/36,000-mile (whichever occurs first) limited warranty (if installed by dealer at the time of new vehicle purchase) and can be financed when installed by dealer at time of new vehicle purchase.³⁹

For more information and to shop online for Altima® Genuine Nissan Accessories, go to bit.ly/24Altima-Accys



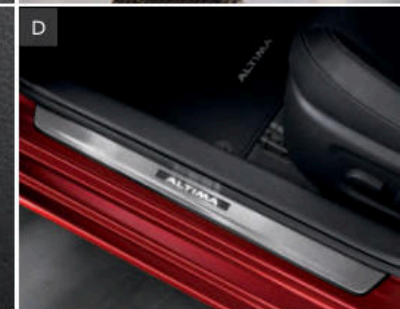
Nissan Altima® SL shown in Scarlet Ember Tintcoat⁵ with 19" Aluminum-Alloy Wheels, Splash Guards (4-piece set), Exterior Ground Lighting w/ Logo, Chrome Body Side Moldings, Chrome Rear Bumper Protector, and Rear Spoiler.

CHOOSE YOUR ACCESSORIES

- A. All-Season Floor Mats — High Wall Liners**
Protect your Altima's floors from sand, snow, dirt, and other messes.
- B. Virtual Key⁴⁰**
Lock/unlock and drive your Altima all without a key, and share your Virtual Key with up to 7 other drivers!
- C. Rear USB-PD Charging Ports**
Includes both USB-A and USB-C charging ports to connect your compatible devices.
- D. Illuminated Kick Plates⁴¹**
Fewer scuffs and a grand entry, every time.
- E. Dual Camera Drive Recorder^{42, 43}**
Can capture incidents in front of your Altima and inside of it, such as break-ins or accidents.
- F. Shopping Bag Hook**
Secure your groceries and keep it together.
- G. Cargo Blocks/Stabilizers and Carpeted Trunk Area Protector⁴⁴**
Secure your cargo and protect your trunk area. (Items sold separately)
- H. Door Cup Paint Protection**
Helps prevent nicks and scratches on outside door cups.

Additional Accessories:

- Sport Carpeted Floor Mats
- All-Season Trunk Area Protector
- Hideaway Trunk Cargo Net
- Clear Rear Bumper Protector
- Trash Bin
- Wheel Locks
- First-Aid Kit
- Interior Accent Lighting
- Frameless Auto-Dimming Rearview Mirror w/ Universal Remote
- USB Charging Cable Set⁷
- And More



SPECIFICATIONS

Engines	S	SV	SR	SR VC-Turbo	SL
2.5-liter Direct Injection Gasoline (DIG) DOHC 16-valve 4-cylinder engine 188 ³⁵ /182 ³³ hp @ 6,000 rpm 180 ³⁵ /178 ³³ lb-ft of torque @ 3,600 rpm	■	■	■		■
2.0-liter Variable Compression Turbo (VC-Turbo®) DOHC 16-valve 4-cylinder engine 248/236 hp @ 5,600 rpm ¹¹ 273/267 lb-ft of torque @ 4,000 rpm ¹¹				■	
Continuously Variable Valve Timing Control System (CVTCS)	■	■	■	■	■
Electronic sequential multi-point fuel injection				■	
Direct Injection Gasoline (DIG)	■	■	■	■	■

Drivetrain	S	SV	SR	SR VC-Turbo	SL
Front-Wheel Drive (FWD)	■	■	■	■	■
Intelligent All-Wheel Drive (AWD) ⁹		A	A		A
Xtronic CVT® (Continuously Variable Transmission)	■	■	■	■	■
Paddle shifters with manual shift mode			■	■	

Brakes	S	SV	SR	SR VC-Turbo	SL
Front vented disc/solid rear disc brakes	■	■	■	■	■
Anti-lock Braking System (ABS)	■	■	■	■	■
Electronic Brake force Distribution (EBD)	■	■	■	■	■
Brake Assist ⁴⁵	■	■	■	■	■
Electronic parking brake		A/P1	A	■	■

Suspension/Steering	S	SV	SR	SR VC-Turbo	SL
Independent strut front suspension	■	■	■	■	■
Multi-link independent rear suspension	■	■	■	■	■
Twin-tube front struts/monotube rear shock absorbers	■	■	■	■	■
Sport-tuned suspension ³⁵			■	■	
Front and rear stabilizer bars	■	■	■	■	■
Dual pinion electric-powered steering	■	■	■	■	■

Driver Assistance Technologies	S	SV	SR	SR VC-Turbo	SL
Cruise control	■	■	■	■	■
ProPILOT Assist ¹³		P1		■	■
Intelligent Forward Collision Warning ²²	■	■	■	■	■
Automatic Emergency Braking with Pedestrian Detection ¹⁴	■	■	■	■	■
Lane Departure Warning ¹⁸	■	■	■	■	■
Intelligent Lane Intervention ¹⁸		P1		■	■
Blind Spot Warning ¹⁷	■	■	■	■	■
Rear Cross Traffic Alert ¹⁶	■	■	■	■	■
Rear Automatic Braking ¹⁵	■	■	■	■	■
Rear Sonar System ²³	■	■	■	■	■
RearView Monitor ²⁴	■	■	■	■	■
Intelligent Around View® Monitor ¹⁹				■	■
Vehicle Dynamic Control (VDC) ⁴⁶ with Traction Control System (TCS)	■	■	■	■	■
Active Brake Limited Slip		A	A		A
Active Ride Control		P1	■	■	■
Intelligent Trace Control ³⁶		P1	■	■	■
Hill start assist	■	■	■	■	■
Automatic brake hold		P1		■	■
High Beam Assist	■	■	■	■	■

Driver Assistance Technologies (continued)	S	SV	SR	SR VC-Turbo	SL
Traffic Sign Recognition ³⁷		P1		■	■
Intelligent Driver Alertness ²⁵	■	■	■	■	■

Wheels/Tires	S	SV	SR	SR VC-Turbo	SL
16" Steel wheels with wheel covers	■				
17" Machine-finished aluminum-alloy wheels		■			
19" Machine-finished SR aluminum-alloy wheels			■		
19" Aluminum-alloy wheels				■	
19" Machine-finished aluminum-alloy wheels					■
P215/60HR16 all-season tires	■				
P215/55VR17 all-season tires		■			
P235/40VR19 all-season tires			■	■	■

Exterior Features	S	SV	SR	SR VC-Turbo	SL
Active Grille Shutters	■	■	■	■	■
Intelligent Auto Headlights	■	■	■	■	■
LED projector headlights with LED signature Daytime Running Lights	■	■	■	■	■
Dual power outside mirrors	■	■	■	■	■
Outside mirrors with LED turn signal indicators				■	■
Power sliding glass moonroof		P1	P2	■	■
Acoustic laminated front door glass				■	■
Chrome V-Motion grille	■	■		■	■
Dark chrome V-Motion grille			■	■	■
Chrome door handles	■	■		■	■
Body-color door handles			■	■	■
Body-color outside mirrors		P1		■	■
Black outside mirrors	■	■	■	■	■
Rear spoiler			■	■	■
Body-color rear diffuser	■	■		■	■
Charcoal rear diffuser			■	■	■
Dual chrome exhaust finishers		P1	■	■	■

Comfort/Convenience	S	SV	SR	SR VC-Turbo	SL
Air conditioning	■	■	■	■	■
Dual Zone Automatic Temperature Control				■	■
In-cabin microfilter	■	■	■	■	■
Rear passenger air conditioning vents				■	■
Power windows with one-touch driver-side auto-up/down	■	■	■	■	■
Power door locks with auto-locking feature	■	■	■	■	■
Rear Door Alert ²⁶	■	■	■	■	■
Remote keyless entry with push button ignition	■	■	■	■	■
Nissan Intelligent Key® with Push Button Ignition	■	■	■	■	■
Remote Engine Start System ²⁷	■	■	■	■	■
Remote Engine Start System with Intelligent Climate Control ²⁷				■	■
Tilt and telescoping steering column	■	■	■	■	■
Variable intermittent speed-sensitive windshield wipers	■	■	■	■	■
Sun visors with illuminated vanity mirrors and extensions			■	■	■
Map lights and rear reading lights	■	■	■	■	■

Seating/Appointments	S	SV	SR	SR VC-Turbo	SL
6-way adjustable driver's seat	■				
8-way power adjustable driver's seat		■		■	■
4-way power adjustable front-passenger's seat			P2	■	■
Driver's seat power lumbar support		P1	P2	■	■
60/40-split fold-down rear seatbacks	■	■	■	■	■
Cloth seat trim	■	■			
Sport cloth seat trim			■		
Sport leather-appointed seats			P2	■	
Leather-appointed seats				■	■
Heated front seats		P1	P2	■	■
Heated steering wheel				■	■
Wrapped steering wheel		P1	■	■	■
Leather-wrapped shift knob		P1	■	■	■
Piano Black interior finishers			■	■	■
Wood-tone trim				■	■
Silver geometric trim			■		
Carbon-fiber look trim			P2	■	
Dark Teak wood-tone trim		P1			■

Infotainment	S	SV	SR	SR VC-Turbo	SL
5" Multi-function information display	■				
7" Advanced Drive-Assist™ Display ³⁴		■	■	■	■
7" Touch-screen display	■				
NissanConnect® 8" color display with multi-touch control ²		■	■		
NissanConnect® 12.3" color display with multi-touch control ²		P1	P2	■	■
Nissan Door to Door Navigation with 5-year trial access to Premium Traffic included ⁶		P1	P2	■	■
SiriusXM Traffic and Travel Link with 3-month trial access included ²		P1	P2	■	■
NissanConnect® Services powered by SiriusXM with 5-year trial access to Select and Plus packages and 3-year trial access to Premium package ²		P1	P2	■	■
Wi-Fi Hotspot ²		P1	P2	■	■
Voice Recognition ⁶	■	■	■	■	■
Hello Nissan ²		P1	P2	■	■
Alexa Built-in ^{2, 8}		P1	P2	■	■
Apple CarPlay® Integration ²		■	■	■	■
Wireless Apple CarPlay® Integration ²		P1	P2	■	■
Android Auto™ compatibility ²		■	■	■	■
Wireless Android Auto™ compatibility ²		P1	P2	■	■
Siri® Eyes Free ²	■	■	■	■	■
Hands-free Text Messaging Assistant ²⁸	■	■	■	■	■
Bluetooth® Hands-free Phone System ²	■	■	■	■	■
AM/FM audio system with six speakers	■	■	■		
Bose Premium Audio System with nine speakers				■	■
Active Noise Cancellation				■	■
Steering wheel-mounted audio controls	■	■	■	■	■
Speed-sensitive volume control	■	■	■	■	■
Auxiliary audio input jack ⁷	■	■	■		
One USB-A port ⁷				■	■
Two USB-A ports and two USB-C ports ⁷		■	■	■	■
Wireless charger ⁷		P1	P2	■	■
SiriusXM with 3-month subscription included ²		■	■	■	■

Infotainment (continued)	S	SV	SR	SR VC-Turbo	SL
SiriusXM with 360L with 3-month subscription included ³⁸		P1	P2	■	■
Streaming Audio via Bluetooth® ²	■	■	■	■	■

Safety	S	SV	SR	SR VC-Turbo	SL
Nissan Advanced Air Bag System with dual-stage supplemental front air bags with seat-belt and occupant-classification sensors ²⁹	■	■	■	■	■
Seat-mounted side-impact supplemental air bags for front- and rear-seat outboard occupants ²⁹	■	■	■	■	■
Driver and front-passenger supplemental knee air bags ²⁹	■	■	■	■	■
Roof-mounted curtain side-impact supplemental air bags with rollover sensor for front- and rear-seat outboard occupant head protection ²⁹	■	■	■	■	■

WEIGHTS/CAPACITIES/MPG

Curb Weights — Lbs.	
S FWD	3,253
SV FWD/AWD	3,283/3,401
SR FWD/AWD/VC-Turbo	3,323/3,442/3,479
SL FWD/AWD	3,373/3,490

Capacities	
Seating capacity	5
Interior passenger volume without moonroof (cu. ft.)	100.6
Interior passenger volume with moonroof (cu. ft.)	98.8
Cargo capacity (cu. ft.) ⁴⁴	15.4
Fuel tank (gals.)	16.2 (FWD)/16.0 (AWD)

2024 EPA Fuel Economy Estimates ¹²					
City/Hwy/Combined MPG	S	SV	SR	SR VC-Turbo	SL
2.5L FWD	27/39/32	27/39/32	27/37/31	-	27/37/31
2.5L AWD	-	26/36/30	26/36/30	-	26/36/30
2.0L VC-Turbo FWD	-	-	-	25/34/29	-

NISSAN ROADSIDE ASSISTANCE

Your peace of mind is on us. For 36 months or 36,000 miles, whichever comes first, your new Nissan vehicle is covered for the following:⁴⁷

- Flat-tire changes
- Trip Interruption benefits
- Jump starts
- Vehicle lockouts
- Emergency fuel delivery

Follow Nissan on:



visit [NissanUSA.com/altima](https://www.nissanusa.com/altima)

PRINTED IN USA



Sign up to get the latest on
Nissan vehicles, news, and events.

<https://www.nissanusa.com/brochures/request-brochure.html>