



ALTIMA[®]

2025



¹Driving is serious business and requires your full attention. If you have to use the connected device while driving, exercise extreme caution at all times so full attention may be given to vehicle operation. Smartphone or other external device not included. ²Nissan Safety Shield technologies can't prevent all collisions or warn in all situations. See Owner's Manual for important safety information. ³Extra cost option. ⁴Features not equipped on all vehicles. ⁵Compatible device, service, and consumer activation of NissanConnect Services package required. Use only when safe and legal. Subject to third party service availability. For more information see NissanUSA.com/connect/legal. ⁶Never program while driving. GPS mapping may not be detailed in all areas or reflect current road status. ⁷Available only on Nissan vehicles with AT&T-compatible in-vehicle Wi-Fi hotspot capability. Subject to third party service availability. Trial activation required. Trial ends when all data is used or period ends, whichever comes first. Use features only when safe and legal. Data charges may apply. Subject to AT&T terms and conditions and its privacy policy, and are not within Nissan's control. Visit www.att.com/csa for complete terms and conditions. Trial subscription is subject to change or early termination at any time without notice. Trademarks and trade names are those of their respective owners. ⁸Feature availability varies by vehicle model year, model, trim level, packaging and options. Connectivity service may be required. Alexa is Amazon's cloud-based voice service. Subject to third party service availability. Amazon, Alexa, Echo, and all related marks are trademarks of Amazon.com, inc. or its affiliates. For more information see NissanUSA.com/connect/legal. ⁹Intelligent All-Wheel Drive cannot prevent collisions or provide enhanced traction in all conditions. Always monitor traffic and weather conditions. ¹⁰Availability of features vary by vehicle model year, model, trim level, packaging, and options. Please see Owner's Manual for important feature information. ¹¹184 hp and 180 lb-ft of torque on FWD models. 182 hp and 178 lb-ft of torque on AWD models. ¹²2025 EPA Fuel Economy Estimates. 27 City MPG / 39 Highway MPG / 32 Combined MPG for Altima[®] 3.5V FWD. 27 City MPG / 37 Highway MPG / 31 Combined MPG for Altima[®] SR, SL FWD. 25 City MPG / 34 Highway MPG / 28 Combined MPG for Altima[®] SV, SR, SL AWD. Actual mileage may vary with driving conditions. Use for comparison only. ¹³ProPILOT Assist can't prevent collisions. Driver at all times responsible to maintain safety by monitoring traffic, controlling vehicle, and if needed steer, brake or accelerate. System works only when lane markings detected and does not function in all weather, traffic and road conditions. See Owner's Manual for safety information. ¹⁴Automatic Emergency Braking with Pedestrian Detection cannot prevent all collisions and may not provide warning or braking in all conditions. Driver should monitor traffic conditions and brake as needed to prevent collisions. See Owner's Manual for safety information. ¹⁵Rear Automatic Braking cannot prevent all collisions and may not provide warning or braking in all conditions. Driver should always turn and check surroundings before driving and brake as needed to prevent collisions. See Owner's Manual for safety information. ¹⁶Blind Spot Warning cannot prevent collisions and may not detect every object or warn in all situations. Driver should always turn and look before changing lanes. See Owner's Manual for safety information. ¹⁷Rear Cross Traffic Alert may not detect all vehicles. See Owner's Manual for safety information. ¹⁸Lane Departure Warning and Intelligent Lane Intervention only operate when lane markings or road edge (if equipped) are detectable. See Owner's Manual for safety information. ¹⁹Intelligent Around View[®] Monitor cannot eliminate blind spots and may not detect every object. Driver should always turn and check surroundings before driving. See Owner's Manual for safety information. ²⁰Virtual composite 360[°] view. ²¹2024 model shown. Features may vary depending on model year. See actual vehicle for model year specifications. ²²Leather appointments. ²³Color option available only with 19" Bronze Aluminum-alloy Wheels. ²⁴Intelligent Forward Collision Warning cannot prevent collisions. See Owner's Manual for safety information. ²⁵Sonar System may not detect every object. Driver should always check surroundings before driving. See Owner's Manual for safety information. ²⁶RearView Monitor may not detect every object and does not eliminate blind spots or warn of moving objects. See Owner's Manual for safety information. ²⁷Intelligent Driver Alertness cannot provide a warning in every situation. See Owner's Manual for safety information. ²⁸Rear Door Alert System does not detect people or cargo. Always check rear seat before exiting. See Owner's Manual for safety information. ²⁹Remote Engine Start System to be used only in accordance with laws or rules in effect in your vehicle's location. ³⁰Use Hands Free Text Messaging when parked in a safe location. If you must use while driving, monitor traffic conditions and keep both hands on the steering wheel to prevent collisions. Compatible device required. Message and data rates may apply. ³¹All bags are only a supplemental restraint system. Always wear your seat belt. Rear-facing child restraints should not be placed in the front-passenger's seat. All children 12 and under should ride in the rear seat properly secured in child restraints, booster seats, or seat belts according to their size. Air bags will only inflate in certain accidents. See Owner's Manual for safety information. ³²Tire Pressure Monitoring System is not a substitute for regular tire pressure checks. See Owner's Manual for safety information. ³³Vehicle must be on for the Easy-Fill Tire Alert to operate. ³⁴Available on AWD models, SV FWD with Premium Package and SL models. ³⁵Information displayed is dependent on how vehicle is equipped. Driving is serious business and requires your full attention. If you have to use the feature while driving, exercise extreme caution at all times so full attention may be given to vehicle operation. ³⁶FWD models only. ³⁷Intelligent Trace Control cannot prevent collisions or loss of control. Driver should remain in control of vehicle at all times. See Owner's Manual for safety information. ³⁸Traffic Sign Recognition may not detect and read all traffic signs in all conditions. Driver should monitor all traffic signs and obey all traffic laws. See Owner's Manual for details. ³⁹Nissan vehicle with "SiriusXM with 360L" capability: SiriusXM with 360L trial period is included with the purchase or lease of a new Nissan vehicle if: (i) vehicle is equipped with SiriusXM with 360L capability and (ii) vehicle is purchased or leased from new Nissan dealer stock. Trial period begins on the purchase or lease date of the qualifying new Nissan vehicle. SiriusXM with 360L is owned and operated by SiriusXM, use of SiriusXM account and its services and features are subject to the SiriusXM Customer Agreement and Privacy Policy available at siriusxm.com, and are not within Nissan's control. Should SiriusXM terminate, change, or restrict service or features, service or features may be suspended or terminated without notice or with no liability to Nissan or its partners or agents. Nissan and its partners or agents are also not responsible for associated costs or other third party charges that may be required for continued operation due to cellular network unavailability, restriction, or termination (including equipment replacements/upgrades, if available, or roaming charges on alternative networks). Trial period is subject to change or early termination at any time without notice. SiriusXM and related logos are trademarks of Sirius XM Radio Inc. and its respective subsidiaries. **SiriusXM and SiriusXM with 360L** Service will automatically stop at the end of your trial subscription period unless you decide to continue service. Trial is non-transferable. If you do not wish to enjoy your trial, you can cancel by calling the number below. All SiriusXM services require a subscription, each sold separately by SiriusXM after the trial period. **Service subject to the SiriusXM Customer Agreement and Privacy Policy, visit siriusxm.com for complete terms and how to cancel which includes online methods or calling 1-866-635-2349.** Some services and features are subject to device capabilities and location availability. Satellite service not available in AK & HI. Certain features and/or content may not be available in vehicles with SiriusXM with 360L unless an active data connection is enabled in the vehicle. Content varies by SiriusXM subscription package. All fees, content and features are subject to change. SiriusXM and related logos are trademarks of Sirius XM Radio Inc. and its respective subsidiaries. ⁴⁰For complete information concerning warranty coverage, conditions, limitations, and exclusions; see your Nissan dealer, parts.NissanUSA.com and read your vehicle's Warranty Information Booklet. ⁴¹Compatible smartphone required. Virtual Key to be used only in accordance with laws or rules in effect in your vehicle's location. Actual maximum distance for operation will vary depending on obstructions between compatible device and vehicle. ⁴²Only front kick plates illuminate. ⁴³Dual Camera Drive Recorder to be used only in accordance with any laws or rules in effect in your vehicle's location that may apply to audio or video recordings of drivers and passengers. ⁴⁴Vehicle shown is for illustrative purposes only. Not representative of brochure's model year/model. ⁴⁵AWD models only. ⁴⁶Brake Assist cannot prevent all collisions and may not provide warning or braking in all conditions. Driver should monitor traffic conditions and brake as needed to prevent collisions. See Owner's Manual for safety information. ⁴⁷Vehicle Dynamic Control cannot prevent collisions due to abrupt steering, carelessness, or dangerous driving techniques. It should remain on when driving, except when freeing the vehicle from mud or snow. See Owner's Manual for safety information. ⁴⁸Cargo shown for display purposes only. Cargo and load capacity limited by weight and distribution. Always secure cargo. ⁴⁹Roadside assistance coverage period varies by model year/model. For complete information concerning warranty coverage, conditions and exclusions, see your Nissan dealer and read the warranty information booklet for the model year/model. Amazon, Alexa, Echo, and all related marks are trademarks of Amazon.com, inc. or its affiliates. Apple CarPlay[®], Siri[®], and Siri[®] Eyes Free are registered trademarks of Apple, Inc. Bluetooth[®] word mark and logos are owned by Bluetooth SIG, inc. and any use of such marks by Nissan is under license. Bose[®] is a registered trademark of The Bose Corporation. Google, Android Auto, Google Maps, YouTube Music and other marks are trademarks of Google LLC. Compatible Android phone and compatible active data plan required. Wireless use of Android Auto requires a compatible Android 11.0+ phone and compatible active data plan. Check g.co/androidauto/requirements for compatibility. HomeLink[®] is a registered trademark of Gentex Corporation. **SiriusXM** is a registered trademark of SIRIUS XM Radio Inc. This brochure is intended for general descriptive and informational purposes only. It is subject to change and does not constitute an offer, representation or warranty (express or implied) by Nissan North America, Inc. Interested parties should confirm the accuracy of any information in this brochure as it relates to a vehicle directly with Nissan North America, Inc. before relying on it to make a purchase decision. Nissan North America, Inc. reserves the right to make changes, at any time, without prior notice, in prices, colors, materials, equipment, specifications, and models and to discontinue models or equipment. Due to continuous product development and other pre- and post-production factors, actual vehicle, materials and specifications may vary from this brochure. Some vehicles shown with optional equipment. See the actual vehicle for complete accuracy. Availability and delivery times for particular models or equipment may vary. Specifications, options and accessories may differ in Hawaii, U.S. territories and other countries. For additional information on availability, options or accessories, see your Nissan dealer or contact Nissan North America, Inc. At NissanUSA.com, you'll find virtual product demonstrations, a way to "build your own Nissan," a dealer locator, and more information about key Nissan support services. Or if you'd prefer, call 1-800-NISSAN-3 for answers to specific questions about Altima[®] or any other Nissan vehicle. The Nissan names, logos, product names, feature names, and slogans are trademarks owned by or licensed to Nissan Motor Co. Ltd. and/or its North American subsidiaries. Other trademarks and trade names are those of their respective owners. **Always wear your seat belt, and please drive responsibly.** ©2024 Nissan North America, Inc. ²⁵ Altima[®] 25122231-N-07/24-70K-KSL

Accelerate towards extraordinary

The 2025 Nissan Altima® is here. Make your move with exhilarating response, upgraded connective tech that amplifies your world,¹ and a style that turns heads. Not to mention standard Nissan Safety Shield® 360, which keeps its head on a swivel at all times.² Altima's arrived — and so have you.



Nissan Altima® SR shown in Gray Sky Pearl with optional equipment.³



12.3-inch color touch-screen display⁴ and available wireless connectivity⁵

Your favorite maps, apps, and more have never looked better than on Altima's 12.3-inch color touch-screen display.^{1, 4, 6} It's so large, it can even split the screen so you won't miss out. And with available wireless connectivity, you can kiss those cords and cables goodbye.¹

- Wireless Apple CarPlay[®] integration^{4, 5}
- Wireless Android Auto[™] compatibility^{4, 5}
- Wireless charger^{1, 4}
- NissanConnect[®] with Wi-Fi Hotspot for up to 7 devices^{1, 4, 5, 7}
- Alexa Built-in^{4, 5, 8}



Intelligent All-Wheel Drive^{4, 9}

Snow day? Go day! Part of Nissan Intelligent Mobility,[®] available Intelligent All-Wheel Drive continuously monitors road conditions and responds in an instant, sending power to the wheels that need it most.^{9, 10}

Up to
188
horsepower¹¹

Up to
180
lb-ft of torque¹¹

Up to
39
hwy mpg¹²



Discover a refined driving experience with the naturally aspirated 2.5L engine

Hop in and experience Altima's standard 2.5L engine, serving up to 188 horsepower and 180 lb-ft of torque.¹¹ With excellent fuel efficiency and up to 27 city mpg and 39 highway mpg, you're ready to take on the world.¹²

ProPILOT Assist

Enjoy the drive even more. With the innovative ProPILOT Assist, your Altima® helps keep you centered in your lane and following the car ahead at a preset distance. It can even bring your Altima to a full stop based on the highway traffic flow and can bring you back up to speed when traffic starts moving again.^{4,13}

Helps keep you centered in gentle curves¹³

Maintains your preset speed and distance¹³

Can even come to a complete stop¹³



Nissan Safety Shield® 360

Nissan Intelligent Mobility® is forever changing how you move with technology that makes you feel more connected, confident, and excited.¹⁰

As part of Nissan Intelligent Mobility, Safety Shield 360 includes features that can help you see more, sense more, and can give you an assist when you need it. The following features are standard on every 2025 Nissan Altima.^{2, 10}

Automatic Emergency Braking with Pedestrian Detection¹⁴

Rear Automatic Braking¹⁵

Blind Spot Warning¹⁶

Rear Cross Traffic Alert¹⁷

Lane Departure Warning¹⁸

High Beam Assist



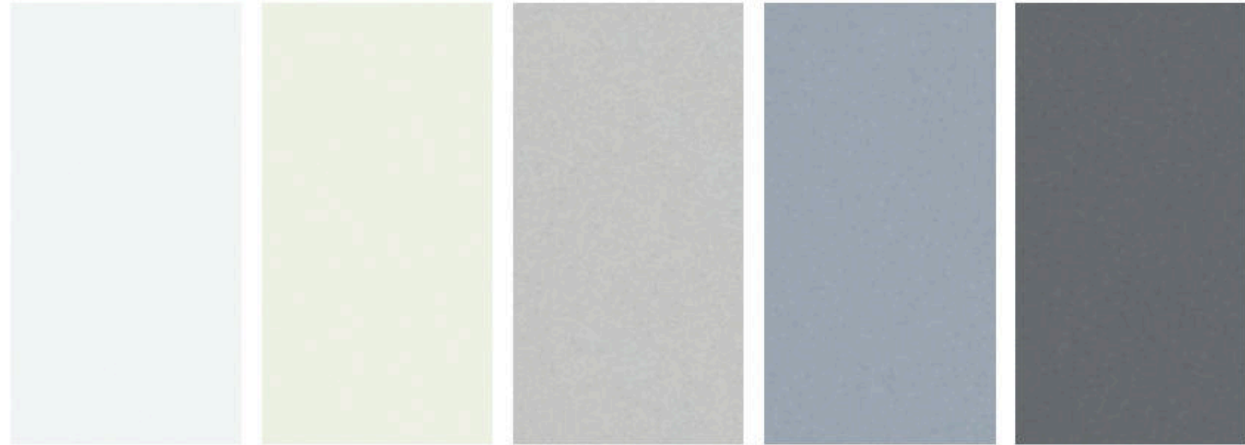
Intelligent Around View® Monitor

Four cameras make parking easy with a virtual composite 360° bird's-eye view of your Altima. You can select from split-screen close-ups of the front, rear, and curbside views for a better look. It also gives you an on-screen alert when it detects moving objects near your vehicle.^{4, 19, 20}



2024 model year shown.

CHOOSE YOUR COLOR



Glacier White

Pearl White TriCoat³

Brilliant Silver Metallic

Gray Sky Pearl³

Gun Metallic

S SV SR SL S SV SR SL S SV SR SL S SV SR SL S SV SR SL

Charcoal Cloth	<input checked="" type="checkbox"/>																		
Gray Cloth					<input checked="" type="checkbox"/>														
Charcoal Sport Cloth																			
Charcoal Sport Leather ²²																			<input checked="" type="checkbox"/>
Gray Leather ²²																			<input checked="" type="checkbox"/>
Charcoal Leather ²²																			<input checked="" type="checkbox"/>



Scarlet Ember Tintcoat³

Garnet Pearl Metallic

Tactical Green Metallic^{3,23}

Bluestone Pearl³

Super Black

S SV SR SL S SV SR SL S SV SR SL S SV SR SL S SV SR SL

Charcoal Cloth																			
Gray Cloth					<input checked="" type="checkbox"/>														
Charcoal Sport Cloth																			
Charcoal Sport Leather ²²																			<input checked="" type="checkbox"/>
Gray Leather ²²																			<input checked="" type="checkbox"/>
Charcoal Leather ²²																			<input checked="" type="checkbox"/>

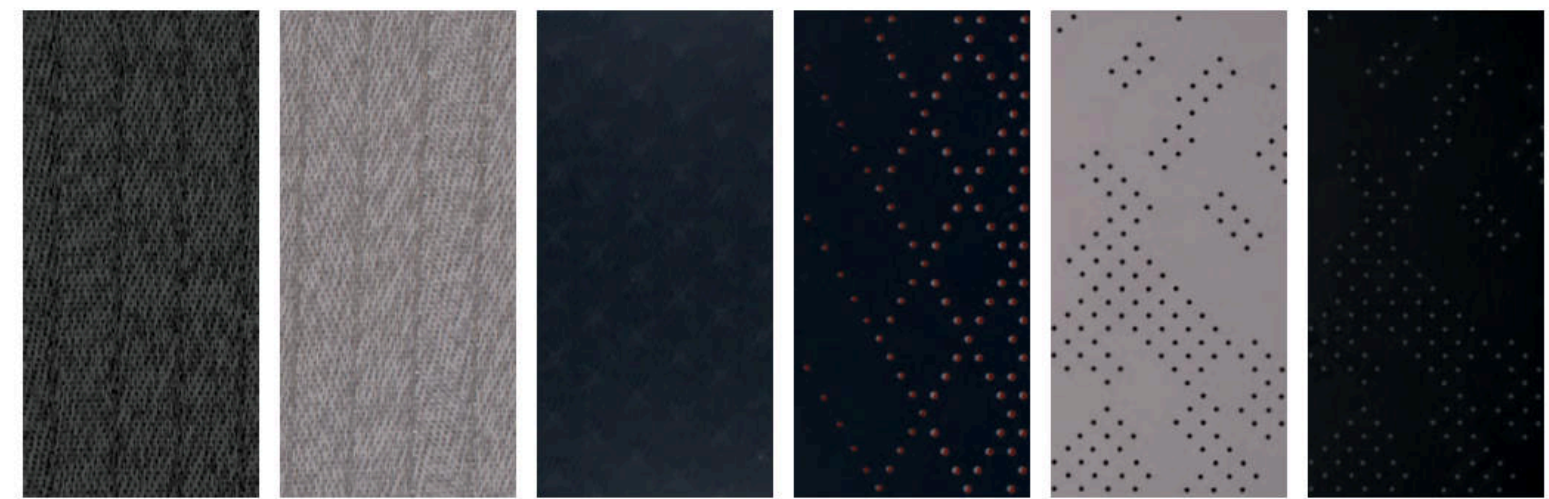
Standard
 Optional

Nissan has taken care to ensure that the color swatches presented here are the closest possible representations of actual vehicle colors. Swatches may vary slightly due to the printing process and whether viewed in daylight, fluorescent or incandescent light. Please see the actual colors at your dealer.

CHOOSE YOUR INTERIOR



Nissan Altima® SR shown in Charcoal Sport Leather with optional equipment.²²

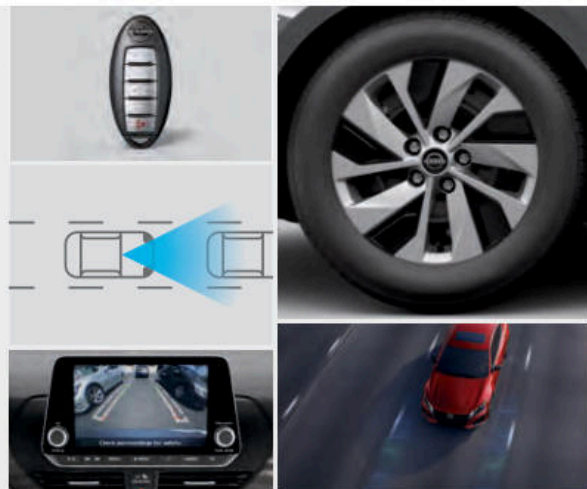


Charcoal Cloth S|SV Gray Cloth SV Charcoal Sport Cloth SR Charcoal Sport Leather²² SR Gray Leather²² SL Charcoal Leather²² SL

CHOOSE YOUR TRIM LEVEL

S

2.5-liter Direct Injection Gasoline (DIG) engine, Front-Wheel Drive (FWD), Xtronic CVT® (Continuously Variable Transmission), Cruise control, Intelligent Forward Collision Warning,²⁴ Automatic Emergency Braking with Pedestrian Detection,¹⁴ Lane Departure Warning,¹⁸ Blind Spot Warning,¹⁶ Rear Cross Traffic Alert,¹⁷ Rear Automatic Braking,¹⁵ Rear Sonar System,²⁵ RearView Monitor,²⁶ Hill start assist, High Beam Assist, Intelligent Driver Alertness,²⁷ 16" Steel wheels with wheel covers, Intelligent Auto Headlights, LED projector headlights with LED signature Daytime Running Lights, Black dual power outside mirrors, Air conditioning, Power windows, Power door locks, Rear Door Alert,²⁸ Remote keyless entry with push button ignition, Remote Engine Start System,²⁹ Tilt and telescoping steering column, 6-way adjustable driver's seat, 60/40-split fold-down rear seatbacks, Cloth seat trim, 5" Multi-function information display, NissanConnect® 8" color display with multi-touch control,⁵ Apple CarPlay® integration,⁵ Android Auto™ compatibility,⁵ Voice Recognition,⁶ Siri® Eyes Free,⁵ Hands-free Text Messaging Assistant,³⁰ Bluetooth® Hands-free Phone System,⁵ Audio system with six speakers, Auxiliary audio input jack,¹ One USB-A port and one USB-C port,¹ Streaming Audio via Bluetooth,^{6,5} SiriusXM,^{6,5} Nissan Advanced Air Bag System,³¹ Tire Pressure Monitoring System (TPMS) with Easy-Fill Tire Alert,^{32, 33} Vehicle Security System



SV INCLUDES S EQUIPMENT PLUS:

Available Intelligent All-Wheel Drive,⁹ Electronic parking brake,³⁴ 17" Machine-finished aluminum-alloy wheels, Nissan Intelligent Key® with Push Button Ignition, 8-way power adjustable driver's seat, Wood-tone trim, 7" Advanced Drive-Assist® Display,³⁵ Two USB-A ports and two USB-C ports¹



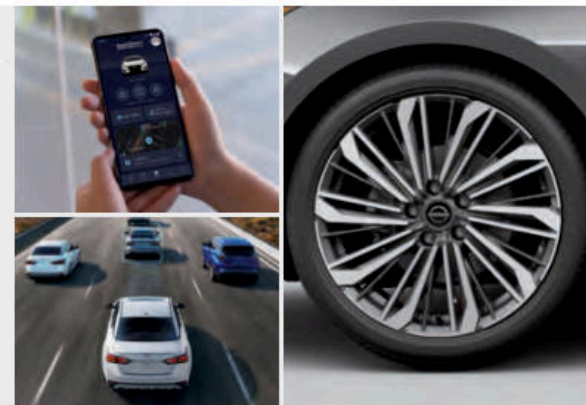
SR INCLUDES SV EQUIPMENT PLUS:

Paddle shifters with manual shift mode, Sport-tuned suspension,³⁶ Active Ride Control, Intelligent Trace Control,³⁷ 19" Machine-finished SR aluminum-alloy wheels, Dark chrome V-Motion grille, Body-color door handles, Charcoal rear diffuser, Dual chrome exhaust finishers, Sport cloth seat trim, Leatherette-wrapped steering wheel, Leather-wrapped shift knob, Piano Black interior finishers, Sun visors with illuminated vanity mirrors and extensions, Silver geometric trim



SL INCLUDES SR EQUIPMENT PLUS:

ProPILOT Assist,¹³ Intelligent Lane Intervention,¹⁸ Intelligent Around View® Monitor,¹⁹ Automatic brake hold, Traffic Sign Recognition,³⁸ 19" Machine-finished aluminum-alloy wheels, Body-color outside mirrors with LED turn signal indicators, Power sliding glass moonroof, Acoustic laminated front door glass, Dual Zone Automatic Temperature Control, Rear passenger air conditioning vents, Remote Engine Start System with Intelligent Climate Control,²⁹ 4-way power adjustable front-passenger's seat, Driver's seat power lumbar support, Leather-appointed seats, Heated front seats and steering wheel, Dark Teak wood-tone trim, NissanConnect® 12.3" color display with multi-touch control,⁵ Nissan Door to Door Navigation,⁶ SiriusXM® Traffic and Travel Link,⁵ NissanConnect® Services powered by SiriusXM,^{6,5} Hello Nissan,⁵ Alexa Built-in,^{5, 8} Wi-Fi Hotspot,^{5, 7} Wireless Apple CarPlay® integration,⁵ Wireless Android Auto™ compatibility,⁵ Bose Premium Audio System with nine speakers, Wireless charger,¹ SiriusXM® with 360L³⁹



CHOOSE YOUR PACKAGE

SPECIAL EDITION PACKAGE SV

Power sliding glass moonroof, Body-color outside mirrors, Rear spoiler, Dual chrome exhaust finishers, 17" Gloss black aluminum-alloy wheels, Dual Zone Automatic Temperature Control, NissanConnect® 12.3" color display with multi-touch control,⁵ Wireless Apple CarPlay® integration,⁵ Wireless Android Auto™ compatibility,⁵ Wireless charger¹



PREMIUM PACKAGE SV

Electronic parking brake,³⁴ ProPILOT Assist,¹³ Intelligent Lane Intervention,¹⁸ Active Ride Control, Intelligent Trace Control,³⁷ Automatic brake hold, Body-color outside mirrors, Power sliding glass moonroof, Dual chrome exhaust finishers, Dual Zone Automatic Temperature Control, Driver's seat power lumbar support, Heated front seats, Wrapped steering wheel and shift knob, Dark Teak wood-tone trim, NissanConnect® 12.3" color display with multi-touch control,⁵ Wireless Apple CarPlay® integration,⁵ Wireless Android Auto™ compatibility,⁵ Wireless charger¹



PREMIUM PACKAGE SR

Power sliding glass moonroof, 4-way power adjustable front-passenger's seat, Driver's seat power lumbar support, Dual Zone Automatic Temperature Control, Sport leather-appointed seats, Heated front seats, Carbon-fiber look trim, NissanConnect® 12.3" color display with multi-touch control,⁵ Wireless Apple CarPlay® integration,⁵ Wireless Android Auto™ compatibility,⁵ Wireless charger¹



NISSANCONNECT® SERVICES PACKAGE SV, SR

Nissan Door to Door Navigation,⁶ NissanConnect® Services powered by SiriusXM,^{6,5} Wi-Fi Hotspot,^{5, 7} SiriusXM® with 360L³⁹



GENUINE NISSAN ACCESSORIES

Turn brand-new into all you

Every Genuine Nissan Accessory is custom-fit, custom-designed, and durability-tested. Each one is backed by Nissan's 3-year/36,000-mile (whichever occurs first) limited warranty (if installed by the dealer at the time of new vehicle purchase) and can be financed when installed by the dealer at time of new vehicle purchase.⁴⁰



For more information and to shop online for Altima® Genuine Nissan Accessories, scan the QR code.



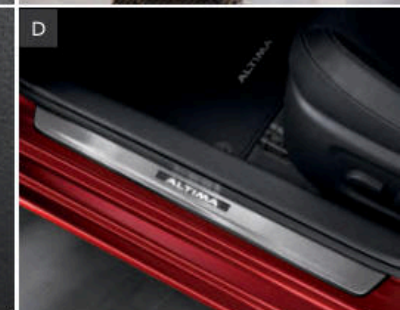
Nissan Altima® SL shown in Scarlet Ember Tintcoat³ with 19" Bronze Aluminum-Alloy Wheels, Splash Guards (4-piece set), Exterior Ground Lighting w/ Logo, Chrome Body Side Moldings, Chrome Rear Bumper Protector, and Rear Spoiler.

CHOOSE YOUR ACCESSORIES

- A. All-Season Floor Mats — High Wall Liners (4-piece set)**
Protect your Altima's floors from sand, snow, dirt, and other messes.
- B. Virtual Key⁴¹**
Lock/unlock and drive your Altima all without a key, and share your Virtual Key with up to 7 other drivers!
- C. Rear USB-PD Charging Ports**
Includes both USB-A and USB-C charging ports to connect your compatible devices.
- D. Illuminated Kick Plates⁴²**
Fewer scuffs and a grand entry, every time.
- E. Dual Camera Drive Recorder^{43, 44}**
Can capture incidents in front of your Altima and inside of it, such as break-ins or accidents.
- F. Seatback Organizer**
A handy place to organize your miscellaneous items.
- G. Cargo Blocks/Stabilizers and Carpeted Trunk Area Protector**
Secure your cargo and protect your trunk area. (Items sold separately)
- H. Door Cup Paint Protection**
Helps prevent nicks and scratches on outside door cups.

Additional Accessories:

- Sport Carpeted Floor Mats
- All-Season Trunk Area Protector
- Hideaway Trunk Cargo Net
- Trash Bin
- Pet Seat Protector
- Dog Harness
- Wheel Locks
- First-Aid Kit
- Interior Accent Lighting
- Frameless Auto-Dimming Rearview Mirror w/ HomeLink®
- USB Charging Cable Set¹
- Soft Sided Cargo Cooler
- And More



SPECIFICATIONS

Engines	S	SV	SR	SL
2.5-liter Direct Injection Gasoline (DIG) DOHC 16-valve 4-cylinder engine 188 ³⁶ /182 ⁴⁵ hp @ 6,000 rpm 180 ³⁶ /178 ⁴⁵ lb-ft of torque @ 3,600 rpm	■	■	■	■
Continuously Variable Valve Timing Control System (CVTCS)	■	■	■	■
Direct Injection Gasoline (DIG)	■	■	■	■

Drivetrain	S	SV	SR	SL
Front-Wheel Drive (FWD)	■	■	■	■
Intelligent All-Wheel Drive (AWD) ⁹		A	A	A
Xtronic CVT [®] (Continuously Variable Transmission)	■	■	■	■
Paddle shifters with manual shift mode			■	

Brakes	S	SV	SR	SL
Front vented disc/solid rear disc brakes	■	■	■	■
Anti-lock Braking System (ABS)	■	■	■	■
Electronic Brake force Distribution (EBD)	■	■	■	■
Brake Assist ⁴⁶	■	■	■	■
Electronic parking brake		A/P1	A	■

Suspension/Steering	S	SV	SR	SL
Independent strut front suspension	■	■	■	■
Multi-link independent rear suspension	■	■	■	■
Twin-tube front struts/monotube rear shock absorbers	■	■	■	■
Sport-tuned suspension ³⁶	■	■	■	■
Front and rear stabilizer bars	■	■	■	■
Dual pinion electric-powered steering	■	■	■	■

Driver Assistance Technologies	S	SV	SR	SL
Cruise control	■	■	■	■
ProPILOT Assist ¹³		P1		■
Intelligent Forward Collision Warning ²⁴	■	■	■	■
Automatic Emergency Braking with Pedestrian Detection ¹⁴	■	■	■	■
Lane Departure Warning ¹⁸	■	■	■	■
Intelligent Lane Intervention ¹⁸		P1		■
Blind Spot Warning ¹⁶	■	■	■	■
Rear Cross Traffic Alert ¹⁷	■	■	■	■
Rear Automatic Braking ¹⁵	■	■	■	■
Rear Sonar System ²⁵	■	■	■	■
RearView Monitor ²⁶	■	■	■	■
Intelligent Around View [®] Monitor ¹⁹				■
Vehicle Dynamic Control (VDC) ⁴⁷ with Traction Control System (TCS)	■	■	■	■
Active Ride Control		P1	■	■
Intelligent Trace Control ³⁷		P1	■	■
Hill start assist	■	■	■	■
Automatic brake hold		P1		■
High Beam Assist	■	■	■	■
Traffic Sign Recognition ³⁸	■	■	■	■
Intelligent Driver Alertness ²⁷	■	■	■	■

Wheels/Tires	S	SV	SR	SL
16" Steel wheels with wheel covers	■			
17" Machine-finished aluminum-alloy wheels		■		
17" Black-finished aluminum-alloy wheels		SE		
19" Machine-finished SR aluminum-alloy wheels			■	
19" Machine-finished aluminum-alloy wheels				■
19" Bronze aluminum-alloy wheels			□	
P215/60HR16 all-season tires	■			
P215/55VR17 all-season tires		■		
P235/40VR19 all-season tires			■	■

Exterior Features	S	SV	SR	SL
Active Grille Shutters	■	■	■	■
Intelligent Auto Headlights	■	■	■	■
LED projector headlights with LED signature Daytime Running Lights	■	■	■	■
Dual power outside mirrors	■	■	■	■
Outside mirrors with LED turn signal indicators				■
Power sliding glass moonroof		P1/SE	P2	■
Acoustic laminated front door glass				■
Chrome V-Motion grille	■	■		■
Dark chrome V-Motion grille			■	
Chrome door handles	■	■		■
Body-color door handles			■	
Body-color outside mirrors		P1/SE		■
Black outside mirrors	■	■	■	
Rear spoiler		SE		
Body-color rear diffuser	■	■		■
Charcoal rear diffuser			■	
Dual chrome exhaust finishers		P1/SE	■	■

Comfort/Convenience	S	SV	SR	SL
Air conditioning	■	■	■	■
Dual Zone Automatic Temperature Control		P1/SE	P2	■
In-cabin microfilter	■	■	■	■
Rear passenger air conditioning vents				■
Power windows with one-touch driver-side auto-up/down	■	■	■	■
Power door locks with auto-locking feature	■	■	■	■
Rear Door Alert ²⁸	■	■	■	■
Remote keyless entry with push button ignition	■			
Nissan Intelligent Key [®] with Push Button Ignition		■	■	■
Remote Engine Start System ²⁹	■	■	■	
Remote Engine Start System with Intelligent Climate Control ²⁹		P1/SE	P2	■
Tilt and telescoping steering column	■	■	■	■
Variable intermittent speed-sensitive windshield wipers	■	■	■	■
Sun visors with illuminated vanity mirrors and extensions		P1	■	■
Map lights and rear reading lights	■	■	■	■

Seating/Appointments	S	SV	SR	SL
6-way adjustable driver's seat	■			
8-way power adjustable driver's seat		■		■
4-way power adjustable front-passenger's seat			P2	■
Driver's seat power lumbar support		P1	P2	■
60/40-split fold-down rear seatbacks	■	■	■	■
Cloth seat trim	■	■		
Sport cloth seat trim			■	
Sport leather-appointed seats			P2	
Leather-appointed seats				■
Heated front seats		P1	P2	■
Heated steering wheel				■
Wrapped steering wheel		P1	■	■
Leather-wrapped shift knob		P1	■	■
Piano Black interior finishers			■	■
Wood-tone trim		■		
Silver geometric trim			■	
Carbon-fiber look trim			P2	
Dark Teak wood-tone trim		P1		■

Infotainment	S	SV	SR	SL
5" Multi-function information display	■			
7" Advanced Drive-Assist [®] Display ³⁵		■	■	■
NissanConnect [®] 8" color display with multi-touch control ⁵	■	■	■	
NissanConnect [®] 12.3" color display with multi-touch control ⁵		P1/SE	P2	■
Nissan Door to Door Navigation with 5-year trial access to Premium Traffic included ⁶		NCS	NCS	■
SiriusXM [®] Traffic and Travel Link with 3-month trial access included ⁵				■
NissanConnect [®] Services powered by SiriusXM [®] with 5-year trial access to Select and Plus packages and 3-year trial access to Premium package ⁵		NCS	NCS	■
Wi-Fi Hotspot ^{5,7}		NCS	NCS	■
Voice Recognition ⁶	■	■	■	■
Hello Nissan ⁵				■
Alexa Built-in ^{5,8}				■
Apple CarPlay [®] integration ⁵	■	■	■	■
Wireless Apple CarPlay [®] integration ⁵		P1/SE	P2	■
Android Auto [™] compatibility ⁵	■	■	■	■
Wireless Android Auto [™] compatibility ⁵		P1/SE	P2	■
Siri [®] Eyes Free ⁵	■	■	■	■
Hands-free Text Messaging Assistant ⁵⁰	■	■	■	■
Bluetooth [®] Hands-free Phone System ⁵	■	■	■	■
AM/FM audio system with six speakers	■	■	■	
Bose Premium Audio System with nine speakers				■
Steering wheel-mounted audio controls	■	■	■	■
Speed-sensitive volume control	■	■	■	■
Auxiliary audio input jack ¹	■	■	■	
One USB-A port and one USB-C port ¹	■			

Infotainment (continued)	S	SV	SR	SL
Two USB-A ports and two USB-C ports ¹		■	■	■
Wireless charger ¹		P1/SE	P2	■
SiriusXM [®] with 3-month subscription included ⁵	■	■	■	
SiriusXM [®] with 360L with 3-month subscription included ³⁹		NCS	NCS	■
Streaming Audio via Bluetooth ^{®5}	■	■	■	■

Safety	S	SV	SR	SL
Nissan Advanced Air Bag System with dual-stage supplemental front air bags with seat-belt and occupant-classification sensors ³¹	■	■	■	■
Driver and front-passenger supplemental knee air bags ³¹	■	■	■	■
Roof-mounted curtain side-impact supplemental air bags with rollover sensor for front- and rear-seat outboard occupant head protection ³¹	■	■	■	■

WEIGHTS/CAPACITIES/MPG

Curb Weights — Lbs.	
S FWD	3,255
SV FWD/AWD	3,281/3,399
SR FWD/AWD	3,322/3,440
SL FWD/AWD	3,373/3,490

Capacities	
Seating capacity	5
Interior passenger volume without moonroof (cu. ft.)	100.6
Interior passenger volume with moonroof (cu. ft.)	98.8
Cargo capacity (cu. ft.) ⁴⁸	15.4
Fuel tank (gals.)	16.2 (FWD)/16.0 (AWD)

2025 EPA Fuel Economy Estimates ¹²				
City/Hwy/Combined MPG	S	SV	SR	SL
2.5L FWD	27/39/32	27/39/32	27/37/31	27/37/31
2.5L AWD	-	25/34/28	25/34/28	25/34/28

NISSAN ROADSIDE ASSISTANCE

Your peace of mind is on us. For 36 months or 36,000 miles, whichever comes first, your new Nissan is covered for the following.⁴⁹

- Flat-tire changes
- Trip Interruption benefits
- Jump starts
- Vehicle lockouts
- Emergency fuel delivery

visit [NissanUSA.com/altima](https://www.nissanusa.com/altima)

PRINTED IN USA



Sign up to get the latest on
Nissan vehicles, news, and events.

<https://www.nissanusa.com/brochures/request-brochure.html>