



ALTIMA®

2026



¹Driving is serious business and requires your full attention. If you have to use the connected device while driving, exercise extreme caution at all times so full attention may be given to vehicle operation. Smartphone or other external device not included. ²Driver-assist and safety features have limitations which affect how they function in certain situations. The driver must never rely exclusively on any vehicle feature to warn about, prevent, or lessen the severity of a collision. It is the driver's responsibility to always be in control, monitor the surroundings, and safely operate the vehicle. Read your vehicle's Owner's Manual for further information. ³Extra cost option. ⁴Feature availability varies by vehicle model, year, model, trim level, packaging and options. ⁵See [NissanUSA.com/connect/legal](https://www.nissanusa.com/connect/legal) for more NissanConnect features/services information. ⁶Never program while driving. GPS mapping may not be detailed in all areas or reflect current road status. ⁷188 hp and 180 lb.-ft. of torque on FWD models. 182 hp and 178 lb.-ft. of torque on AWD models. ⁸2026 EPA Fuel Economy Estimates: 26 City MPG / 36 Highway MPG / 30 Combined MPG for Altima® SV and SR FWD. 25 City MPG / 35 Highway MPG / 28 Combined MPG for Altima SV and SR AWD. Actual mileage may vary with driving conditions. Use for comparison only. ⁹Virtual composite 360° view. ¹⁰Color option available only with 19" Bronze Aluminum-alloy Wheels. ¹¹Available on AWD models, SV and SR FWD With Premium Package. ¹²Rear Door Alert System does not detect people or cargo. Always check rear seat before exiting. See Owner's Manual for safety information. ¹³Remote Engine Start System to be used only in accordance with laws or rules in effect in your vehicle's location. ¹⁴Information displayed is dependent on how vehicle is equipped. Driving is serious business and requires your full attention. If you have to use the feature while driving, exercise extreme caution at all times so full attention may be given to vehicle operation. ¹⁵Use Hands Free Text Messaging when parked in a safe location. If you must use while driving, monitor traffic conditions and keep both hands on the steering wheel to prevent collisions. Compatible device required. Message and data rates may apply. ¹⁶Air bags are only a supplemental restraint system. Always wear your seat belt. Rear-facing child restraints should not be placed in the front-passenger's seat. All children 12 and under should ride in the rear seat properly secured in child restraints, booster seats, or seat belts according to their size. Air bags will only inflate in certain accidents. See Owner's Manual for safety information. ¹⁷Tire Pressure Monitoring System is not a substitute for regular tire pressure checks. See Owner's Manual for safety information. ¹⁸Vehicle must be on for the Easy-Fill Tire Alert to operate. ¹⁹FWD models only. ²⁰For complete information concerning warranty coverage, conditions, limitations, and exclusions, see your Nissan dealer, [parts.nissanusa.com](https://www.nissanusa.com) and read your vehicle's Warranty Information booklet. ²¹Only front kick plates illuminate. ²²Dual Camera Drive Recorder to be used only in accordance with any laws or rules in effect in your vehicle's location that may apply to audio or video recordings of drivers and passengers. ²³Vehicle shown is for illustrative purposes only. Not representative of brochure's model year/model. ²⁴AWD models only. ²⁵Cargo shown for display purposes only. Cargo and load capacity limited by weight and distribution. Always secure cargo. ²⁶Roadside assistance coverage period varies by model year/model. For complete information concerning warranty coverage, conditions and exclusions, see your Nissan dealer and read the warranty information booklet for the model year/model. ²⁷Apple CarPlay, Siri, and Siri Eyes Free are registered trademarks of Apple, Inc. Bluetooth® word mark and logos are owned by Bluetooth SIG, Inc. and any use of such marks by Nissan is under license. Bose® is a registered trademark of The Bose Corporation. Google, Android Auto, Google Maps, YouTube Music and other marks are trademarks of Google LLC. Compatible Android phone and compatible active data plan required. Wireless use of Android Auto requires a compatible Android 11.0+ phone and compatible active data plan. Check [g.co/androidauto/requirements](https://www.google.com/androidauto/requirements) for compatibility. HomeLink® is a registered trademark of Genex Corporation. SiriusXM is a registered trademark of Sirius XM Radio Inc. This brochure is intended for general descriptive and informational purposes only. It is subject to change and does not constitute an offer, representation or warranty (express or implied) by Nissan North America, Inc. Interested parties should confirm the accuracy of any information in this brochure as it relates to a vehicle directly with Nissan North America, Inc. before relying on it to make a purchase decision. Nissan North America, Inc. reserves the right to make changes, at any time, without prior notice, in prices, colors, materials, equipment, specifications, and models and to discontinue models or equipment. Due to continuous product development and other pre- and post-production factors, actual vehicle, materials and specifications may vary from this brochure. Some vehicles shown with optional equipment. See the actual vehicle for complete accuracy. Availability and delivery times for particular models or equipment may vary. Specifications, options and accessories may differ in Hawaii, U.S. territories and other countries. For additional information on availability, options or accessories, see your Nissan dealer or contact Nissan North America, Inc. At [NissanUSA.com](https://www.nissanusa.com), you'll find virtual product demonstrations, a way to "build your own Nissan," a dealer locator, and more information about key Nissan support services. Or if you'd prefer, call 1-800-NISSAN-3 for answers to specific questions about Altima® or any other Nissan vehicle. The Nissan names, logos, product names, feature names, and slogans are trademarks owned by or licensed to Nissan Motor Co. Ltd. and/or its North American subsidiaries. Other trademarks and trade names are those of their respective owners. **Always wear your seat belt, and please drive responsibly.** ©2025 Nissan North America, Inc. ²⁶Altima® 2608260-N-01/26-53.1K-KSL

Accelerate towards extraordinary

The 2026 Nissan Altima® is here, with exhilarating performance, connective tech,¹ and styling that turns heads. With standard Nissan Safety Shield® 360, Altima brings dependability and confidence for an exceptional driving experience.²



Nissan Altima® SR shown in Tactical Green Metallic / Super Black Two-tone with Splash Guards and optional equipment.³



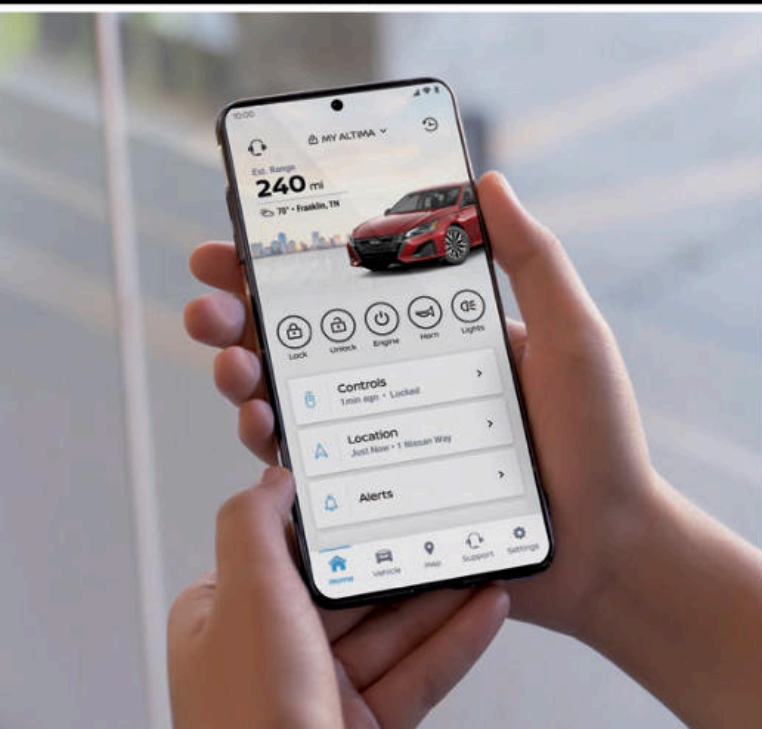
12.3-inch touch-screen display⁴ and available wireless connectivity⁵

Your favorite apps, maps, and more are easily accessible on Altima's 12.3" high-resolution touch-screen display.^{1, 4, 6} The available wireless connectivity is not only highly convenient, but also allows you to eliminate the clutter of cables.¹

- Wireless Apple CarPlay[®] integration^{4, 5}
- Wireless Android Auto[™] compatibility^{4, 5}
- Wireless charger⁴

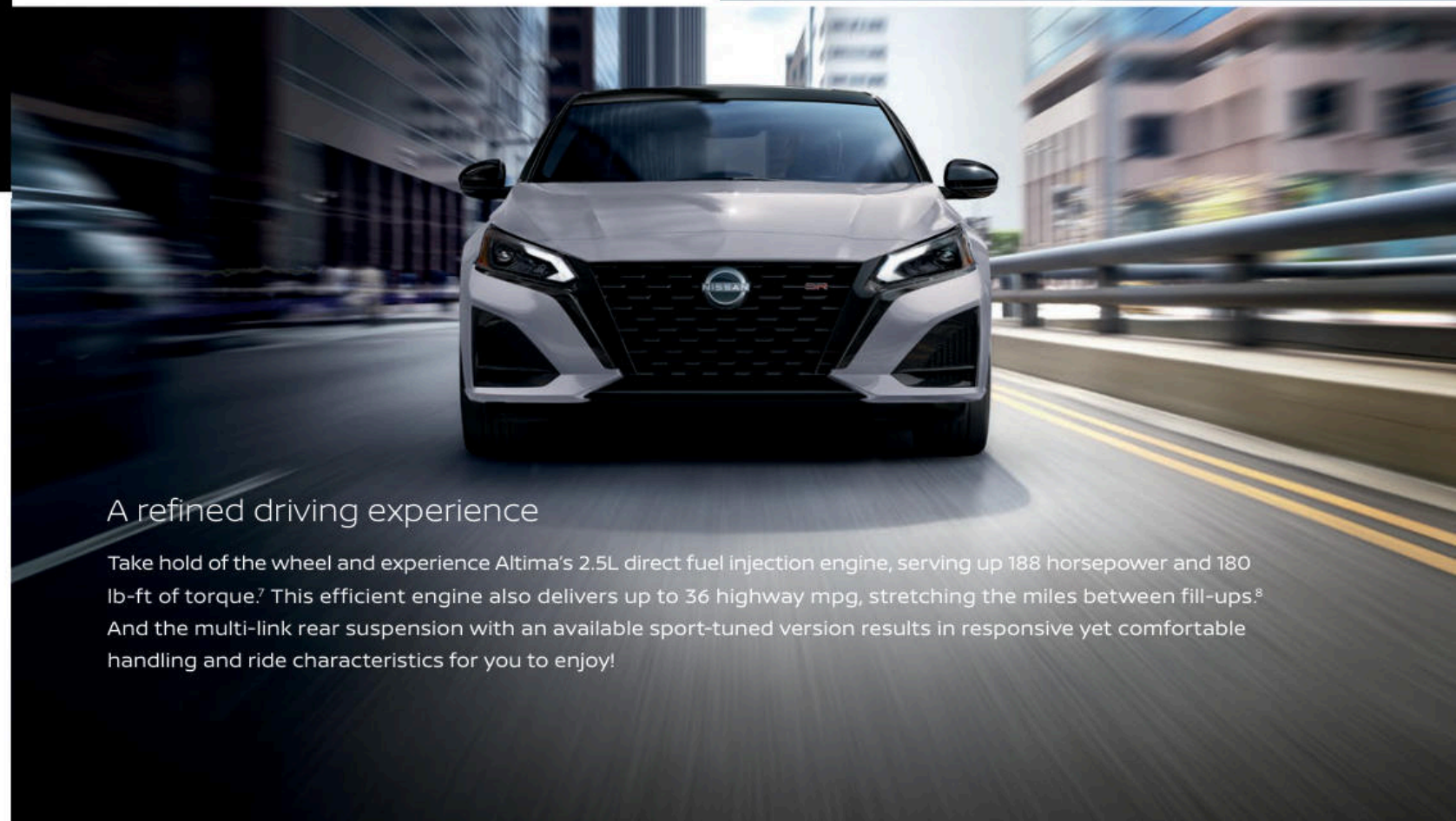
Intelligent All-Wheel Drive^{2, 4}

Snow day? No problem! Available Intelligent All-Wheel Drive continuously monitors road conditions and responds in an instant, sending power to the wheels that need it most.²



Ownership made easy

Unlock your NissanConnect[®] services conveniently through the MyNISSAN App on your compatible smartphone. Once connected, you'll get service and maintenance details, roadside assistance, vehicle functions like remote start, and more.^{1, 5, 13}



A refined driving experience

Take hold of the wheel and experience Altima's 2.5L direct fuel injection engine, serving up 188 horsepower and 180 lb-ft of torque.⁷ This efficient engine also delivers up to 36 highway mpg, stretching the miles between fill-ups.⁸ And the multi-link rear suspension with an available sport-tuned version results in responsive yet comfortable handling and ride characteristics for you to enjoy!

ProPILOT Assist

Suddenly traffic doesn't seem quite as tedious. With the innovative ProPILOT Assist, your Altima® helps keep you centered in your lane and following the car ahead at a preset distance. It can even bring your Altima to a full stop based on the highway traffic flow and can bring you back up to speed when traffic starts moving again.^{2,4}

Helps keep you centered in gentle curves²

Maintains your preset speed and distance²

Can even come to a complete stop²



Nissan Safety Shield® 360

Safety Shield 360 includes features that can help you see more, sense more, and can give you an assist when you need it. The following features are standard on every 2026 Nissan Altima.²

Automatic Emergency Braking with Pedestrian Detection²

Rear Automatic Braking²

Blind Spot Warning²

Rear Cross Traffic Alert²

Lane Departure Warning²

High Beam Assist



Intelligent Around View® Monitor

Four cameras make parking easy with a virtual composite 360° bird's-eye view of your Altima. You can select from split-screen close-ups of the front, rear, and curbside views for a better look. It also gives you an on-screen alert when it detects moving objects near your vehicle.^{2,4,9}



CHOOSE YOUR COLOR



Pearl White TriCoat³



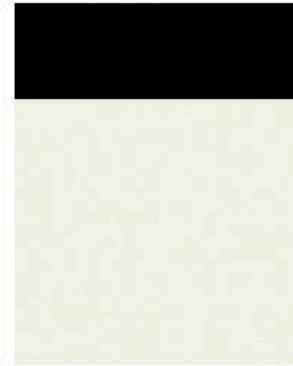
Brilliant Silver Metallic



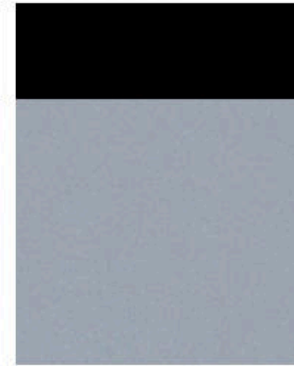
Gray Sky Pearl³



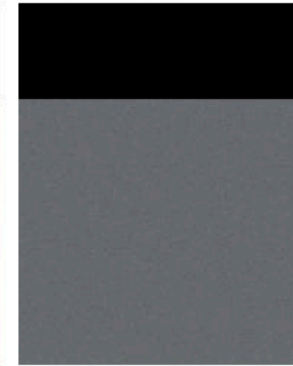
Super Black



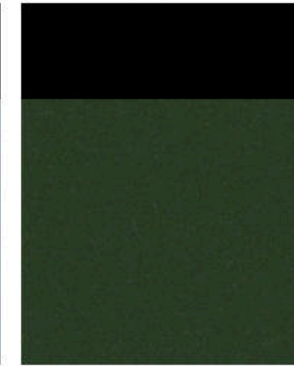
Pearl White TriCoat / Super Black Two-tone³



Gray Sky Pearl / Super Black Two-tone³



Gun Metallic / Super Black Two-tone³



Tactical Green Metallic / Super Black Two-tone^{3,10}

SV SR

SV SR

SV SR

SV SR

SV SR

SV SR

SV SR

SV SR

Charcoal Cloth	<input checked="" type="checkbox"/>	<input type="checkbox"/>
Charcoal Leather appointments	<input type="checkbox"/>	<input type="checkbox"/>
Charcoal Sport Cloth	<input type="checkbox"/>	<input checked="" type="checkbox"/>
Charcoal Sport Leather appointments	<input type="checkbox"/>	<input type="checkbox"/>

<input checked="" type="checkbox"/>	<input type="checkbox"/>
<input type="checkbox"/>	<input type="checkbox"/>
<input type="checkbox"/>	<input checked="" type="checkbox"/>
<input type="checkbox"/>	<input type="checkbox"/>

<input type="checkbox"/>	<input type="checkbox"/>
<input type="checkbox"/>	<input checked="" type="checkbox"/>
<input type="checkbox"/>	<input type="checkbox"/>
<input type="checkbox"/>	<input type="checkbox"/>

<input checked="" type="checkbox"/>	<input type="checkbox"/>
<input type="checkbox"/>	<input type="checkbox"/>
<input type="checkbox"/>	<input checked="" type="checkbox"/>
<input type="checkbox"/>	<input type="checkbox"/>

<input type="checkbox"/>	<input type="checkbox"/>
<input type="checkbox"/>	<input checked="" type="checkbox"/>
<input type="checkbox"/>	<input type="checkbox"/>
<input type="checkbox"/>	<input type="checkbox"/>

<input type="checkbox"/>	<input type="checkbox"/>
<input type="checkbox"/>	<input checked="" type="checkbox"/>
<input type="checkbox"/>	<input type="checkbox"/>
<input type="checkbox"/>	<input type="checkbox"/>

<input type="checkbox"/>	<input type="checkbox"/>
<input type="checkbox"/>	<input checked="" type="checkbox"/>
<input type="checkbox"/>	<input type="checkbox"/>
<input type="checkbox"/>	<input type="checkbox"/>

<input type="checkbox"/>	<input type="checkbox"/>
<input type="checkbox"/>	<input checked="" type="checkbox"/>
<input type="checkbox"/>	<input type="checkbox"/>
<input type="checkbox"/>	<input type="checkbox"/>



Gun Metallic



Scarlet Ember Tintcoat³



Tactical Green Metallic^{3,10}

SV SR

SV SR

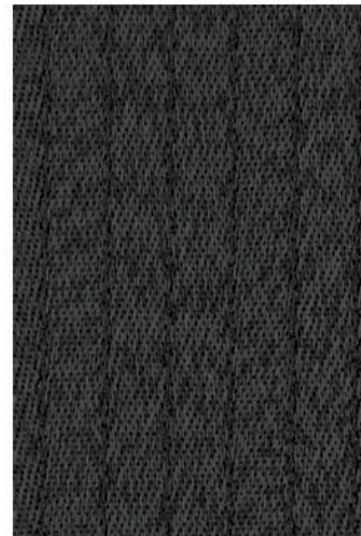
SV SR

Charcoal Cloth	<input checked="" type="checkbox"/>	<input type="checkbox"/>
Charcoal Leather appointments	<input type="checkbox"/>	<input type="checkbox"/>
Charcoal Sport Cloth	<input type="checkbox"/>	<input checked="" type="checkbox"/>
Charcoal Sport Leather appointments	<input type="checkbox"/>	<input type="checkbox"/>

<input checked="" type="checkbox"/>	<input type="checkbox"/>
<input type="checkbox"/>	<input type="checkbox"/>
<input type="checkbox"/>	<input checked="" type="checkbox"/>
<input type="checkbox"/>	<input type="checkbox"/>

<input type="checkbox"/>	<input type="checkbox"/>
<input type="checkbox"/>	<input checked="" type="checkbox"/>
<input type="checkbox"/>	<input type="checkbox"/>
<input type="checkbox"/>	<input type="checkbox"/>

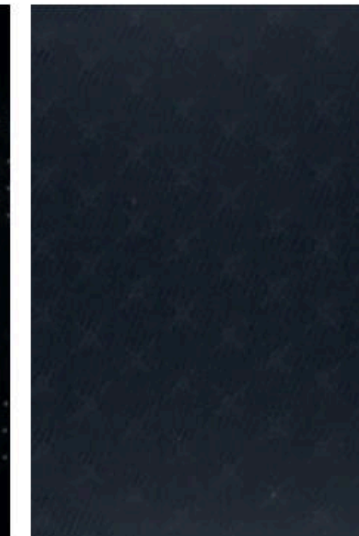
CHOOSE YOUR INTERIOR



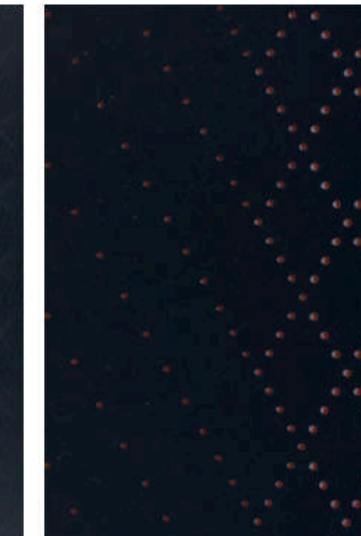
Charcoal Cloth
SV



Charcoal Leather appointments
SV



Charcoal Sport Cloth
SR



Charcoal Sport Leather appointments
SR

Standard
 Optional

Nissan has taken care to ensure that the color swatches presented here are the closest possible representations of actual vehicle colors. Swatches may vary slightly due to the printing process and whether viewed in daylight, fluorescent or incandescent light. Please see the actual colors at your dealer.

CHOOSE YOUR TRIM LEVEL

SV

- 2.5-liter Direct Injection Gasoline (DIG) engine
 - Front-Wheel Drive (FWD)
 - Available Intelligent All-Wheel Drive²
 - Available Electronic parking brake¹¹
 - Xtronic CVT[®] (Continuously Variable Transmission)
 - Cruise control
 - Intelligent Forward Collision Warning²
 - Automatic Emergency Braking with Pedestrian Detection²
 - Lane Departure Warning²
 - Blind Spot Warning²
 - Rear Cross Traffic Alert²
 - Rear Automatic Braking²
 - Rear Sonar System²
 - RearView Monitor²
 - Hill start assist
 - High Beam Assist
 - Intelligent Driver Alertness²
 - 17" Machine-finished aluminum-alloy wheels
 - Intelligent Auto Headlights
 - LED projector headlights with LED signature Daytime Running Lights
 - Black dual power outside mirrors
 - Body-color door handles
 - Air conditioning
 - Power windows
- Power door locks
 - Rear Door Alert¹²
 - Nissan Intelligent Key with Push Button Ignition
 - Remote Engine Start System¹³
 - Tilt and telescoping steering column
 - 8-way power adjustable driver's seat
 - 60/40-split fold-down rear seatbacks
 - Cloth seat trim
 - Wood-tone trim
 - 7" Advanced Drive-Assist[®] Display¹⁴
 - NissanConnect[®] 8" color display with multi-touch control⁵
 - Apple CarPlay[®] integration⁵
 - Android Auto[™] compatibility⁵
 - Voice Recognition
 - Siri[®] Eyes Free⁵
 - Hands-free Text Messaging Assistant¹⁵
 - Bluetooth[®] Hands-free Phone System⁵
 - Audio system with six speakers
 - Auxiliary audio input jack¹
 - One USB-A port and one USB-C port¹
 - Streaming Audio via Bluetooth^{®5}
 - SiriusXM^{®5}
 - Nissan Advanced Air Bag System¹⁶
 - Tire Pressure Monitoring System (TPMS) with Easy-Fill Tire Alert^{17,18}
 - Vehicle Security System



SR INCLUDES SV EQUIPMENT PLUS:

- Paddle shifters with manual shift mode
 - Sport-tuned suspension¹⁹
 - Active Ride Control
 - Intelligent Trace Control²
 - 19" Machine-finished SR aluminum-alloy wheels
 - Gloss black V-Motion grille
 - Gloss black rear diffuser
 - Dual chrome exhaust finishers
 - Sport cloth seat trim
 - Leatherette-wrapped steering wheel
 - Leather-wrapped shift knob
- Piano Black interior finishers
 - NissanConnect[®] 12.3" color display with multi-touch control⁵
 - Wireless Apple CarPlay[®] integration⁵
 - Wireless Android Auto[™] compatibility⁵
 - Wireless charger
 - Two USB-A ports and two USB-C ports¹
 - Rear vents on center console
 - Sun visors with illuminated vanity mirrors and extensions
 - Silver geometric trim



CHOOSE YOUR PACKAGE

SPECIAL EDITION PACKAGE | SV

Power sliding glass moonroof, Body-color outside mirrors, Body-color rear spoiler, Dual chrome exhaust finishers, 17" Gloss black aluminum-alloy wheels, Remote Engine Start System¹³ with Intelligent Climate Control, Dual Zone Automatic Temperature Control, Rear vents on center console, NissanConnect[®] 12.3" color display with multi-touch control,⁵ Wireless Apple CarPlay[®] integration,⁵ Wireless Android Auto[™] compatibility,⁵ Two USB-A ports and two USB-C ports¹



PREMIUM PACKAGE | SV

19" Aluminum-alloy wheels, Electronic parking brake,¹¹ ProPILOT Assist,² Intelligent Lane Intervention,² Active Ride Control, Intelligent Trace Control,² Automatic brake hold, Power sliding glass moonroof, Body-color outside mirrors, Leather-appointed seats, Dual chrome exhaust finishers, Dual Zone Automatic Temperature Control, Rear vents on center console, Driver's seat power lumbar support, Heated front seats, 4-way power adjustable front-passenger's seat, Wrapped steering wheel and shift knob, Dark Teak wood-tone trim, NissanConnect[®] 12.3" color display with multi-touch control,⁵ Wireless Apple CarPlay[®] integration,⁵ Wireless Android Auto[™] compatibility,⁵ Remote Engine Start System¹³ with Intelligent Climate Control, Two USB-A ports and two USB-C ports¹



NISSANCONNECT[®] SERVICES PACKAGE | SV

NissanConnect[®] Services powered by SiriusXM,^{®5} Wi-Fi Hotspot,⁵



MIDNIGHT EDITION[®] PACKAGE | SR

19" Gloss black aluminum-alloy wheels, Power sliding glass moonroof, Gloss black rear spoiler, Midnight Edition[®] emblem, Dual Zone Automatic Temperature Control



PREMIUM PACKAGE | SR

ProPILOT Assist,² Intelligent Lane Intervention,² Intelligent Around View[®] Monitor,² Electronic parking brake,¹¹ Automatic brake hold, Black outside mirrors with LED turn signal indicators, Body-color rear spoiler, Power sliding glass moonroof, Remote Engine Start System¹³ with Intelligent Climate Control, 4-way power adjustable front-passenger's seat, Driver's seat power lumbar support, Dual Zone Automatic Temperature Control, Sport leather-appointed seats, Heated front seats and steering wheel, Carbon-fiber look trim, Bose Premium Audio System with nine speakers



GENUINE NISSAN ACCESSORIES

Turn brand-new into all you

Every Genuine Nissan Accessory is custom-fit, custom-designed, and durability-tested. Each one is backed by Nissan's 3-year/36,000-mile (whichever occurs first) limited warranty (if installed by the dealer at the time of new vehicle purchase) and can be financed when installed by the dealer at time of new vehicle purchase.²⁰



For more information and to shop online for Altima® Genuine Nissan Accessories, scan the code.



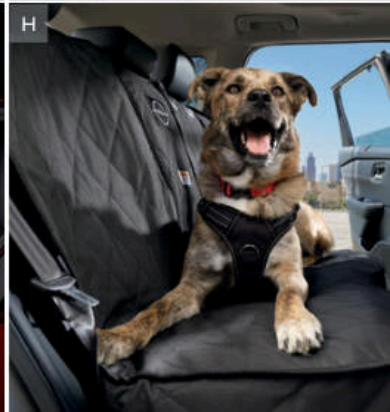
Nissan Altima® SR shown in Scarlet Ember Tintcoat³ with 19" Bronze Aluminum-Alloy Wheels, Splash Guards (4-piece set), Exterior Ground Lighting w/ Logo, Chrome Body Side Moldings, Chrome Rear Bumper Protector, and Rear Spoiler.

CHOOSE YOUR ACCESSORIES

- A. All-Season Floor Mats — High Wall Liners (4-piece set)**
Protect your Altima's floors from sand, snow, dirt, and other messes.
- B. Removable Tote Cargo Organizer**
Protect your Altima, take care of your cargo, and keep everything organized and ready to go when you are.
- C. Rear USB-PD Charging Ports**
Includes both USB-A and USB-C charging ports to connect your compatible devices.
- D. Illuminated Kick Plates²¹**
Fewer scuffs and a grand entry, every time.
- E. Dual Camera Drive Recorder^{22, 23}**
Can capture incidents in front of your Altima and inside of it, such as break-ins or accidents.
- F. Seatback Organizer**
A handy place to organize your miscellaneous items.
- G. Cargo Blocks/Stabilizers and Carpeted Trunk Area Protector**
Secure your cargo and protect your trunk area. (Items sold separately)
- H. Pet Seat Protector**
Make your Altima pet-ready with this durable, easy-fitting Genuine Nissan pet seat protector.

Additional Accessories:

- Sport Carpeted Floor Mats
- All-Season Trunk Area Protector
- Hideaway Trunk Cargo Net
- Trash Bin
- Dog Harness (S, M, L, XL)
- Wheel Locks
- First-Aid Kit
- Sliding Trunk Organizer Tray
- Frameless Auto-Dimming Rearview Mirror w/ HomeLink®
- USB Charging Cable Set¹
- Soft Sided Cargo Cooler
- Door Cup Paint Protection
- Shopping Bag Hook
- And More



SPECIFICATIONS

Engines	SV	SR
2.5-liter Direct Injection Gasoline (DIG) DOHC 16-valve 4-cylinder engine 188 ¹⁹ /182 ²⁴ hp @ 6,000 rpm ⁷ 180 ¹⁹ /178 ²⁴ lb-ft of torque @ 3,600 rpm ⁷	■	■
Continuously Variable Valve Timing Control System (CVTCS)	■	■
Direct Injection Gasoline (DIG)	■	■

Drivetrain		
Front-Wheel Drive (FWD)	■	■
Intelligent All-Wheel Drive (AWD) ²	□	□
Xtronic CVT [®] (Continuously Variable Transmission)	■	■
Paddle shifters with manual shift mode		■

Brakes		
Front vented disc/solid rear disc brakes	■	■
Anti-lock Braking System (ABS)	■	■
Electronic Brake force Distribution (EBD)	■	■
Brake Assist ²	■	■
Electronic parking brake	A/P1	A/P2

Suspension/Steering		
Independent strut front suspension	■	■
Multi-link independent rear suspension	■	■
Twin-tube front struts/monotube rear shock absorbers	■	■
Sport-tuned suspension ¹⁹		■
Front and rear stabilizer bars	■	■
Dual pinion electric-powered steering	■	■

Driver Assistance Technologies		
Cruise control	■	■
ProPILOT Assist ²	P1	P2
Intelligent Forward Collision Warning ²	■	■
Automatic Emergency Braking with Pedestrian Detection ²	■	■
Lane Departure Warning ²	■	■
Intelligent Lane Intervention ²	P1	P2
Blind Spot Warning ²	■	■
Rear Cross Traffic Alert ²	■	■
Rear Automatic Braking ²	■	■
Rear Sonar System ²	■	■
RearView Monitor ²	■	■
Intelligent Around View [®] Monitor ²		P2
Vehicle Dynamic Control (VDC) ² with Traction Control System (TCS)	■	■
Active Ride Control	P1	■
Intelligent Trace Control ²	P1	■
Hill start assist	■	■
Automatic brake hold	P1	P2
High Beam Assist	■	■
Intelligent Driver Alertness ²	■	■

Wheels/Tires	SV	SR
17" Machine-finished aluminum-alloy wheels	■	
17" Gloss black-finished aluminum-alloy wheels	SE	
19" Machine-finished aluminum-alloy wheels	P1	
19" Machine-finished SR aluminum-alloy wheels		■
19" Gloss black-finished aluminum-alloy wheels		ME
P215/55VR17 all-season tires	■	
P235/40VR19 all-season tires	P1	■

Exterior Features		
Active Grille Shutters	■	■
Intelligent Auto Headlights	■	■
LED projector headlights with LED signature Daytime Running Lights	■	■
Dual power outside mirrors	■	■
Outside mirrors with LED turn signal indicators		P2
Power sliding glass moonroof	P1/SE	P2/ME
Silver V-Motion grille	■	
Gloss black V-Motion grille		■
Body-color door handles	■	■
Body-color outside mirrors	P1/SE	
Black outside mirrors	■	■
Body-color rear spoiler	SE	P2
Gloss black rear spoiler		ME
Gun Metallic rear diffuser	■	
Gloss black rear diffuser		■
Dual chrome exhaust finishers	P1/SE	■

Comfort/Convenience		
Air conditioning	■	■
Dual Zone Automatic Temperature Control	P1/SE	P2/ME
Rear vents on center console	P1/SE	■
In-cabin microfilter	■	■
Power windows with front window one-touch auto-up/down	■	■
Power door locks with auto-locking feature	■	■
Rear Door Alert ¹²	■	■
Nissan Intelligent Key [®] with Push Button Ignition	■	■
Remote Engine Start System ¹³	■	■
Remote Engine Start System ¹³ with Intelligent Climate Control	P1/SE	P2
Tilt and telescoping steering column	■	■
Variable intermittent speed-sensitive windshield wipers	■	■
Sun visors with illuminated vanity mirrors and extensions	P1	■
Map lights and rear reading lights	■	■

Seating/Appointments		
8-way power adjustable driver's seat	■	■
4-way power adjustable front-passenger's seat	P1	P2
Driver's seat power lumbar support	P1	P2
60/40-split fold-down rear seatbacks	■	■

Seating/Appointments (continued)	SV	SR
Cloth seat trim	■	
Leather-appointed seats	P1	
Sport cloth seat trim		■
Sport leather-appointed seats		P2
Heated front seats	P1	P2
Heated steering wheel		P2
Wrapped steering wheel	P1	■
Leather-wrapped shift knob	P1	■
Piano Black interior finishers		■
Wood-tone trim	■	
Dark Teak wood-tone trim	P1	
Silver geometric trim		■
Carbon-fiber look trim		P2

Infotainment		
7" Advanced Drive-Assist [®] Display ¹⁴	■	■
NissanConnect [®] 8" color display with multi-touch control ⁵	■	
NissanConnect [®] 12.3" color display with multi-touch control ⁵	P1/SE	■
NissanConnect [®] Services powered by SiriusXM [®] with 5-year trial access to Select and Plus packages and 1-year trial access to Premium package ⁵	NCS	
Wi-Fi Hotspot ⁵	NCS	
Voice Recognition	■	■
Apple CarPlay [®] integration ⁵	■	■
Wireless Apple CarPlay [®] integration ⁵	P1/SE	■
Android Auto [™] compatibility ⁵	■	■
Wireless Android Auto [™] compatibility ⁵	P1/SE	■
Siri [®] Eyes Free ⁵	■	■
Hands-free Text Messaging Assistant ¹⁵	■	■
Bluetooth [®] Hands-free Phone System ⁵	■	■
AM/FM audio system with six speakers	■	■
Bose Premium Audio System with nine speakers		P2
Steering wheel-mounted audio controls	■	■
Speed-sensitive volume control	■	■
Auxiliary audio input jack ¹	■	
One USB-A port and one USB-C port ¹	■	
Two USB-A ports and two USB-C ports ¹	P1/SE	■
Wireless charger		■
SiriusXM [®] with 3-month subscription included ⁵	■	■
Streaming Audio via Bluetooth ^{®5}	■	■

Safety		
Nissan Advanced Air Bag System with dual-stage supplemental front air bags with seat-belt and occupant-classification sensors ¹⁶	■	■
Driver and front-passenger supplemental knee air bags ¹⁶	■	■
Roof-mounted curtain side-impact supplemental air bags with rollover sensor for front- and rear-seat outboard occupant head protection ¹⁶	■	■

DIMENSIONS/CAPACITIES/WEIGHTS/MPG

Exterior Dimensions - Inches	
Wheelbase	111.2
Overall length	192.9
Overall width	72.9
Overall height (depending on vehicle configuration)	56.7-57.4
Track width (depending on vehicle configuration)	62.8-63.6

Interior Dimensions (Front/Rear) — Inches	
Head room without moonroof	39.1/36.9
Head room with moonroof	38.0/36.7
Shoulder room	58.2/57.1
Hip room	54.7/54.5
Leg room	43.8/35.2

Capacities	
Seating capacity	5
Interior passenger volume without moonroof (cu. ft.)	100.6
Interior passenger volume with moonroof (cu. ft.)	98.8
Cargo capacity (cu. ft.) ²⁵	15.4
Fuel tank (gals.)	16.2 (FWD)/ 16.0 (AWD)

Curb Weights — Lbs.	
SV FWD/AWD	3,281/3,399
SR FWD/AWD	3,322/3,440

2026 EPA Fuel Economy Estimates ⁴	
City/Hwy/ Combined MPG	SV/SR
FWD	26/36/30
AWD	25/33/28

NISSAN ROADSIDE ASSISTANCE

Includes added peace of mind. For 36 months or 36,000 miles, whichever comes first, your new Nissan is covered for the following:²⁶

- Flat-tire changes
- Trip Interruption benefits
- Jump starts
- Vehicle lockouts
- Emergency fuel delivery

visit [NissanUSA.com/altima](https://www.nissanusa.com/altima)

PRINTED IN USA



Sign up to get the latest on
Nissan vehicles, news, and events.

<https://www.nissanusa.com/brochures/request-brochure.html>