

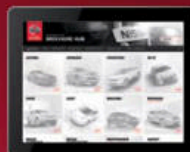


2017  
**ARMADA®**

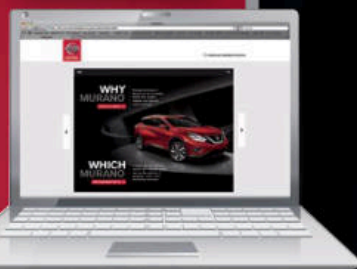
Innovation  
that excites

### SWIPE FOR MORE INFO

Download the Interactive Brochure Hub app on your tablet and you'll have Armada® and the whole Nissan lineup at your fingertips. Get the full product story enhanced with interactive demos and videos, plus complete info on trim levels, colors, accessories, and more.



Nissan Interactive Brochure Hub available free on the App Store® and Google Play.®



Or go to [NissanUSA.com](http://NissanUSA.com) to view on your desktop.

### NISSAN ROADSIDE ASSISTANCE

Your peace of mind is on us. For 36 months or 36,000 miles, whichever comes first, your new Nissan is covered for the following:¹

- Flat-tire changes
- Jump starts
- Trip Interruption benefits
- Vehicle lockouts
- Emergency fuel delivery



Innovation  
that excites

Follow Nissan on:



visit [NissanUSA.com/armada](http://NissanUSA.com/armada)

¹Roadside Assistance and Trip Interruption available during the first 36 months or 36,000 miles (whichever occurs first) after initial new vehicle delivery. Restrictions apply. See Owner's Manual for details. The App Store® is a registered trademark of Apple, Inc. All rights reserved. Facebook® is a registered trademark of Facebook, Inc. Google® and YouTube® are registered trademarks of Google, Inc. Twitter® is a registered trademark of Twitter, Inc.

PRINTED IN USA



**TAKE ON** greater possibilities. Turn heads with a refined, yet unmistakable, exterior design. Attention to detail and exceptional craftsmanship greet you the moment you step inside. Plush room for up to eight and versatility? Check. Advanced technology that connects you to your world and keeps an eye on your surroundings? Absolutely. And out on the road, feel in command, rain or shine, even when you're hauling up to 8,500 lbs.<sup>1</sup> Armada® is a full-size SUV that makes every day an unforgettable **ADVENTURE.**

Nissan Armada® Platinum shown in Pearl White.

<sup>1</sup>Towing capability varies by trim level and configuration. See Nissan Towing Guide and Owner's Manual for proper use.



## IMPRESSIVE COMFORT AND CAPACITY

Let the whole crew stretch out in absolute comfort with seating for up to eight – or seven with the available second-row captain's chairs. Then change things up with a highly flexible interior. Add in an innovative climate control system that reaches every row, and every passenger can find their ideal zone.

Heated Front and Second-row Seats<sup>2</sup>

Seating for up to 8

Dual Zone Automatic Temperature Control (ATC)

Power Return 3rd-row Seats<sup>3</sup>

## SURROUNDED BY CONFIDENCE

In one of the most advanced Nissan vehicles ever, you can expect confidence from an array of available Safety Shield Technologies. Whether you're keeping a safe distance from the vehicle ahead, changing lanes, or backing out of tight parking spots, these available features can help bring awareness to another level.

- Intelligent Cruise Control<sup>3,4</sup>  
- Predictive Forward Collision Warning<sup>3,5</sup>  
- Lane Departure Warning and Prevention<sup>3,6</sup>

- Blind Spot Warning<sup>3,7</sup>  
- Blind Spot Intervention<sup>3,8</sup>  
- Backup Collision Intervention<sup>3,9</sup>



## POWERFUL V8 AND ALL-WHEEL DRIVE

You'll never have to leave a toy behind with a stunningly powerful Endurance® V8 engine at your command. Count on all 390 hp and 394 lb-ft of torque to make easy work out of towing up to 8,500 lbs.<sup>1</sup> And when the pavement turns to dirt, trust in intuitive all-mode 4WD<sup>\*</sup> to keep things moving.



## ENTERTAINMENT FOR EVERYONE

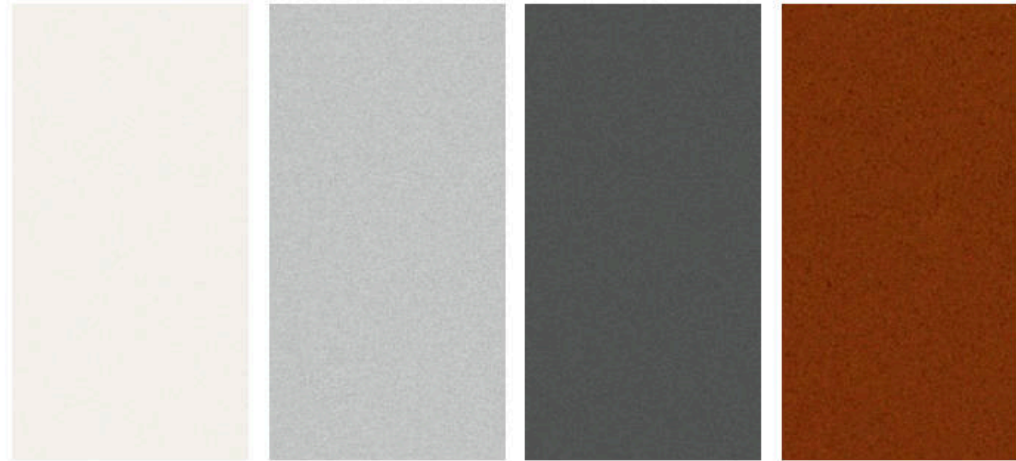
With a Tri-Zone Entertainment System, no one is left out of the fun. The second row features two monitors that can play individually. And with the two wireless headsets that are included, your passengers can watch quietly, while up front you can enjoy the thrilling sound of the Bose® Premium Audio System.<sup>3,10</sup>

# FULL-SIZE POSSIBILITIES

<sup>1</sup>Towing capability varies by configuration. See Nissan Towing Guide and Owner's Manual for additional information. <sup>2</sup>Heated second-row outboard seats are an available feature. <sup>3</sup>Available feature. <sup>4</sup>Intelligent Cruise Control is not a collision avoidance system or warning device. Designed to use limited braking. Failure to apply the brakes could result in an accident. <sup>5</sup>PFCW is intended to warn you before a collision occurs; it cannot prevent a collision. Speed and other limitations apply. See Owner's Manual for details. <sup>6</sup>LDW and LDP operate only when the lane markings are clearly visible.

Speed limitations apply. See Owner's Manual for details. <sup>7</sup>Blind Spot Warning is not a substitute for proper lane change procedures. The system will not prevent contact with other vehicles or accidents. It may not detect every vehicle or object around you. <sup>8</sup>Blind Spot Intervention is not a substitute for proper lane change procedures. The system will not prevent contact with other vehicles or accidents. It may not detect every vehicle or object around you. <sup>9</sup>BCI will not detect every object, and speed limitations apply. Always check surroundings and turn to look behind you before moving vehicle. See Owner's Manual for details. <sup>10</sup>Tri-Zone operation requires compatible auxiliary media system. See Owner's Manual for details. Bose® is a registered trademark of The Bose Corporation.

## CHOOSE YOUR COLOR



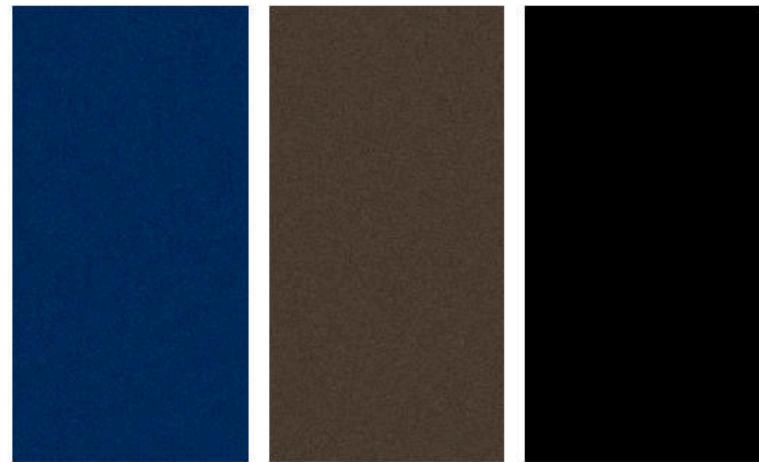
Pearl White<sup>1</sup> QAB

Brilliant Silver K23

Gun Metallic KAD

Forged Copper CAU

	SV	SL	PLATINUM		SV	SL	PLATINUM		SV	SL	PLATINUM		SV	SL	PLATINUM
ALMOND CLOTH				■				■				■			
CHARCOAL CLOTH				■				■				■			
ALMOND LEATHER		■			■				■				■		
TAN LEATHER			■				■				■				■
CHARCOAL LEATHER		■	■		■	■			■	■			■	■	



Hermosa Blue bws

Mocha Almond CAS

Super Black KH3

	SV	SL	PLATINUM		SV	SL	PLATINUM		SV	SL	PLATINUM
ALMOND CLOTH				■				■			
CHARCOAL CLOTH				■				■			
ALMOND LEATHER		■	■		■	■	■		■	■	■
TAN LEATHER							■				■
CHARCOAL LEATHER		■	■		■	■			■	■	

■ Standard

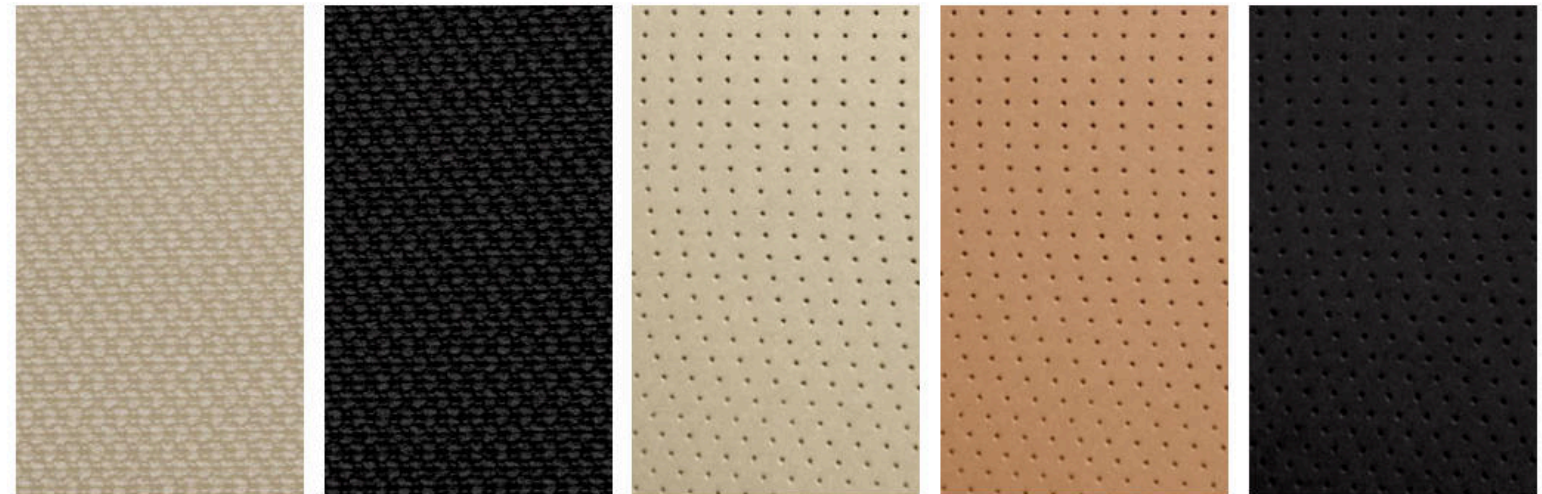
<sup>1</sup>Extra cost option. <sup>2</sup>2017 Nissan Armada Almond and Charcoal Cloth interior fabric swatches represent pre-production samples. Production cloth samples not available at time of printing. Please contact your local dealer for details.

Nissan has taken care to ensure that the color swatches presented here are the closest possible representations of actual vehicle colors. Swatches may vary slightly due to the printing process and whether viewed in daylight, fluorescent or incandescent light. Please see the actual colors at your local Nissan dealer.

## CHOOSE YOUR INTERIOR



Nissan Armada<sup>®</sup> Platinum shown in Almond Leather.



Almond Cloth<sup>2</sup>  
SV

Charcoal Cloth<sup>2</sup>  
SV

Almond Leather  
SL | Platinum

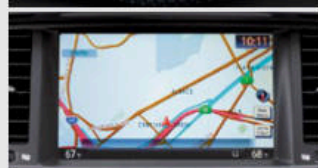
Tan Leather  
Platinum

Charcoal Leather  
SL | Platinum

## CHOOSE YOUR TRIM LEVEL

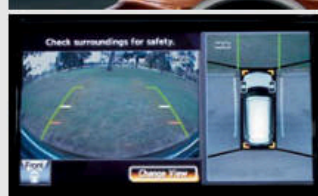
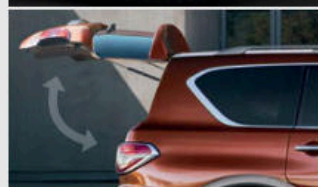
### SV

- 390-hp Endurance® 5.6-liter V8 engine
- 7-speed automatic transmission with Tow/Haul Mode
- Standard 2WD or available all-mode 4WD® with 2-speed transfer case
- 13.8" front and rear vented disc brakes
- 4-wheel Anti-lock Braking System (ABS)
- Electronic Brake force Distribution (EBD) with Brake Assist
- Hill start assist
- Independent double-wishbone suspension with auto-leveling rear suspension and stabilizer bars
- 18" aluminum-alloy wheels with P265/70R18 all-season tires
- Tow hitch receiver
- Automatic on/off headlights
- LED low-beam headlights with integrated signature
- Dark-painted roof rails and exterior trim
- Chrome grille and door handles
- Power-folding outside mirrors with turn signal indicators
- Nissan Hard Drive Navigation System with 8.0" touch-screen monitor and Voice Recognition<sup>1</sup>
- SiriusXM® NavTraffic® and NavWeather<sup>2</sup>
- Nissan Intelligent Key® with Push Button Ignition
- Bluetooth® Hands-free Phone System<sup>3</sup>
- Dual Zone Automatic Temperature Control (ATC)
- Rear air conditioning with rear controls
- RearView Monitor<sup>4</sup>
- Illuminated steering wheel-mounted controls
- Four 12-volt DC power outlets
- Cargo-area storage under rear floor<sup>5</sup>
- Cargo tie-down hooks (eight)
- 4-way power driver's and front passenger's seat
- Heated front seats
- Second-row 60/40 split fold-down bench seat with tip-up easy entry for third row
- Third-row 60/40 split fold-down bench seat
- Leather-wrapped steering wheel and shift knob
- Wood-tone trim and black carpeting
- Bose® Audio System
- SiriusXM® Satellite Radio<sup>2</sup>
- MP3/WMA CD playback capability
- Speed-sensitive volume control
- USB connection port for iPod® interface<sup>6</sup>
- Nissan Advanced Air Bag System (AABS)



### SL INCLUDES SV EQUIPMENT PLUS:

- 20" Machine-finished aluminum-alloy wheels
- P275/60R20 all-season tires
- Fog lights
- Power folding chrome outside mirrors with turn signal indicators
- Auto-dimming outside mirrors
- Heated outside mirrors with puddle lights
- Front and Rear Sonar System (eight sensors)<sup>7</sup>
- Power liftgate
- Remote Engine Start System
- Around View® Monitor with Moving Object Detection (MOD)<sup>8</sup>
- Footwell lights
- Auto-dimming inside rearview mirror
- HomeLink® Universal Transceiver
- Rain-sensing wipers
- Leather-appointed seats
- Power third-row 60/40 split fold-down bench seat
- Memory System - driver's seat, steering wheel and outside mirrors
- 7-pin wiring harness and trailer brake pre-wiring



### PLATINUM INCLUDES SL EQUIPMENT PLUS:

- 20" Machine-finished tinted aluminum-alloy wheels
- Power sliding moonroof with one touch open/close
- Climate controlled front seats (heated and cooled)
- Intelligent Cruise Control (ICC)<sup>9</sup>
- Distance Control Assist (DCA)<sup>10</sup>
- Heated leather-wrapped steering wheel
- Leather-appointed door trim with double stitching
- Heated rear seats
- Rear seat step light
- Windshield wiper de-icer
- Tri-Zone Entertainment System with dual 7.0" monitors, DVD player with remote control, two wireless headphones, and audio/video input jacks
- Predictive Forward Collision Warning (PFCW)<sup>11</sup>
- Forward Emergency Braking (FEB)<sup>12</sup>
- Lane Departure Warning (LDW)<sup>13</sup>
- Lane Departure Prevention (LDP)<sup>14</sup>
- Blind Spot Warning (BSW)<sup>15</sup>
- Blind Spot Intervention (BSI)<sup>16</sup>
- Backup Collision Intervention (BCI)<sup>17</sup>



<sup>1</sup>Never program while driving. GPS mapping may not be detailed in all areas or reflect current road status. <sup>2</sup>Required monthly subscriptions sold separately for each available SiriusXM feature after trial period, and are continuous until you call SiriusXM to cancel. Installation costs, one-time activation fee, other fees and taxes will apply. Each SiriusXM feature availability is dependent upon vehicle model, trim level, packaging, and/or options, and may only be available in select markets. Satellite Radio U.S. service, NavWeather® service, and SiriusXM® Travel Link® services (if any of the foregoing features are equipped on vehicle) available only to those 18 or older in the 48 contiguous states and D.C. Fees and programming subject to change. Subscriptions governed by Customer Agreement available at [siriusxm.com](http://siriusxm.com). ©2016 Sirius XM Radio Inc. Sirius® XM® and all related marks and logos are trademarks of Sirius XM Radio Inc. <sup>3</sup>Availability of specific features is dependent upon the phone's Bluetooth® support. Please refer to your phone Owner's Manual for details. Bluetooth® word mark and logos are owned by Bluetooth SIG, Inc., and any use of such marks by Nissan is under license. See [NissanUSA.com/bluetooth](http://NissanUSA.com/bluetooth) for details. <sup>4</sup>Parking aid/convenience feature. Cannot completely eliminate blind spots. May not detect every object and does not warn of moving objects. Always check surroundings and turn to look behind you before moving vehicle. <sup>5</sup>Cargo and load capacity limited by weight and distribution. Always secure all cargo. <sup>6</sup>Driving is serious business and requires your full attention. If you have to use the connected device while driving, exercise extreme caution at all times so full attention may be given to vehicle operation. iPod® is a registered trademark of Apple, Inc. All rights reserved. iPod® or other external device not included. <sup>7</sup>The Sonar System is a convenience, not a substitute for proper parking and/or backing procedures. Always check that it is safe to do so before moving vehicle. May not detect every object. <sup>8</sup>AVM with MOD cannot completely eliminate blind spots and may not detect every object. MOD operates at vehicle speeds below 5 mph. Always check surroundings and turn to look behind you before moving vehicle. <sup>9</sup>Intelligent Cruise Control is not a collision avoidance system or warning device. Designed to use limited braking. Failure to apply the brakes could result in an accident. <sup>10</sup>Distance Control Assist helps maintain a distance to the vehicle in front under certain conditions. Not a collision avoidance system. Failure to apply the brakes could result in an accident. <sup>11</sup>PFCW is intended to warn you before a collision occurs; it cannot prevent a collision. Speed and other limitations apply. See Owner's Manual for details. <sup>12</sup>FEB cannot prevent accidents due to carelessness or dangerous driving techniques. It may not provide warning or braking in certain conditions. Speed limitations apply. <sup>13</sup>LDW operates only when the lane markings are clearly visible. Speed limitations apply. See Owner's Manual for details. <sup>14</sup>LDP operates only when the lane markings are clearly visible. Speed limitations apply. See Owner's Manual for details. <sup>15</sup>Blind Spot Warning is not a substitute for proper lane change procedures. The system will not prevent contact with other vehicles or accidents. It may not detect every vehicle or object around you. <sup>16</sup>Blind Spot Intervention is not a substitute for proper lane change procedures. The system will not prevent contact with other vehicles or accidents. It may not detect every vehicle or object around you. <sup>17</sup>BCI will not detect every object, and speed limitations apply. Always check surroundings and turn to look behind you before moving vehicle. See Owner's Manual for details. Bose® is a registered trademark of The Bose Corporation. HomeLink® is a registered trademark of Genex Corporation.

CHOOSE YOUR PACKAGE



**SV** DRIVER PACKAGE:

- Fog lights
- Power liftgate
- Auto-dimming interior rearview mirror
- HomeLink® Universal Transceiver
- Power third-row 60/40 split fold-down bench seat
- 7-pin wiring harness and trailer brake pre-wiring<sup>1</sup>



**PLATINUM** CAPTAIN'S CHAIRS PACKAGE:

- Second-row fold-flat captain's chairs with padded armrests and easy entry for third row
- Second-row padded center console



**SL** MOONROOF PACKAGE:

- Power glass moonroof with one-touch open/close



**SL** TECHNOLOGY PACKAGE:

- Intelligent Cruise Control (ICC)<sup>2</sup>
- Distance Control Assist (DCA)<sup>3</sup>
- Predictive Forward Collision Warning (PFCW)<sup>4</sup>
- Forward Emergency Braking (FEB)<sup>5</sup>
- Blind Spot Warning (BSW)<sup>6</sup>
- Backup Collision Intervention (BCI)<sup>7</sup>

<sup>1</sup>Towing capability varies by trim level and configuration. See Nissan Towing Guide and Owner's Manual for additional information. <sup>2</sup>Intelligent Cruise Control is not a collision avoidance system or warning device. Designed to use limited braking. Failure to apply the brakes could result in an accident. <sup>3</sup>Distance Control Assist helps maintain a distance to the vehicle in front under certain conditions. Not a collision avoidance system. Failure to apply the brakes could result in an accident. <sup>4</sup>PFCW is intended to warn you before a collision occurs; it cannot prevent a collision. Speed and other limitations apply. See Owner's Manual for details. <sup>5</sup>FEB cannot prevent accidents due to carelessness or dangerous driving techniques. It may not provide warning or braking in certain conditions. Speed limitations apply. <sup>6</sup>Blind Spot

Warning is not a substitute for proper lane change procedures. The system will not prevent contact with other vehicles or accidents. It may not detect every vehicle or object around you. <sup>7</sup>BCI will not detect every object, and speed limitations apply. Always check surroundings and turn to look behind you before moving vehicle. See Owner's Manual for details. Bose® is a registered trademark of The Bose Corporation. HomeLink® is a registered trademark of Gentex Corporation.

CHOOSE YOUR ACCESSORIES



Every Genuine Nissan Accessory is custom-fit, custom-designed and durability-tested. Each one is also backed by Nissan's 3-year/36,000-mile (whichever occurs first) limited warranty (if installed by dealer at the time of purchase).<sup>1</sup> Plus, they can be financed when installed by dealer at time of purchase.

- A. Illuminated Kick Plates**  
For a grand entrance every time.
- B. Hitch Ball Mount, Class III<sup>2</sup>**  
We'll hook you up.
- C. Wireless Smartphone Charger<sup>3</sup>**  
Power up without plugging in.
- D. Nissan 4G WiFi & Apps<sup>4</sup>**  
Connected passengers are happy passengers.
- E. All-season Floor Mats**  
Neither rain, sleet, nor snow will mess your ride.
- F. Interior Accent Lighting**  
Starts every trip with a warm glow.
- G. Cargo Area Protector<sup>5</sup>**  
Preserve and protect your cargo – and your Armada.
- H. Dual USB Rapid-charging Ports<sup>3</sup>**  
Reach a full charge in a hurry.

Additional Accessories:

- Roof Rail Crossbars
- Moonroof Wind Deflector
- Side Window Deflectors
- Chrome Side Mirror Covers
- Chrome Body Side Moldings
- Weight Distributing Hitch Ball Mount, Class IV<sup>2</sup>
- And More

<sup>1</sup>Genuine Nissan Accessories are covered by Nissan's Limited Warranty on Genuine Nissan Replacement Parts, Genuine NISMO® S-Tune Parts, and Genuine Nissan Accessories for the longer of 12 months/12,000 miles (whichever occurs first) or the remaining period under the 3-year/36,000-mile (whichever occurs first) Nissan New Vehicle Limited Warranty. Terms and conditions apply. See Warranty Information Booklet for details. <sup>2</sup>Towing capability varies by configuration. See Nissan Towing Guide and Owner's Manual for additional information. <sup>3</sup>Driving is serious business and requires your full attention. If you have to use the connected device while driving, exercise extreme caution at all times so full attention may be given to vehicle operation. iPhone® is a registered trademark of Apple, Inc. All rights reserved. iPhone® or other external device not included. <sup>4</sup>Driving is serious business and requires your full

**GENUINE NISSAN ACCESSORIES**

**TURN BRAND-NEW INTO ALL YOU**

For more information and to shop online for Armada® Genuine Nissan Accessories, go to [bit.ly/17armada-estore](http://bit.ly/17armada-estore)



Nissan Armada® Platinum shown in Pearl White with Chrome Side Moldings, Chrome Side Mirror Covers (standard on Platinum), Fog Lights, Roof Rail Crossbars, Splash Guards, Side Window Deflectors, and Moonroof Wind Deflector.

attention. Only use Nissan WiFi and Apps Services powered by Autonet Mobile when safe to do so. Only available on select models. See [nissanwifi.com](http://nissanwifi.com) for complete availability details. Never program while driving. GPS mapping may not be detailed in all areas or reflect current road status. Nissan WiFi and Apps Services requires compatible cellular network provided by Autonet, navigation map data, and GPS satellite signal receptions, the absence of which can limit or prevent the ability of the Nissan WiFi and Apps Services. Cellular network and GPS signals not available in all areas and/or at all times. Technology is evolving, and changes to cellular networks provided by independent companies or other third party changes that impact Nissan WiFi and Apps Services are not within Nissan's control. Should a third party or Autonet Mobile terminate or make changes that impact the service, service may be terminated without notice and Nissan shall have no liability. The Apps Services requires compatible smartphone or personal computer, not included with vehicle. Enrollment and Subscription Agreement is required to receive full suite of Nissan WiFi and Apps Services through Autonet Mobile. The 90 day trial period for Apps Services begins when the unit is registered with Autonet Mobile; subsequently the respective paid subscription for WiFi is at the then current rate to continue to receive respective services. Terms and conditions of Subscription Agreement then apply. Text rates and/or data usage may apply. <sup>5</sup>Cargo and load capacity limited by weight and distribution. Always secure all cargo. Heavy loading of the vehicle with cargo, especially on the roof, will affect the handling and stability of the vehicle.

## SPECIFICATIONS

Engine	SV	SL	Platinum
Endurance® 5.6-liter DOHC 32-valve V8 engine	■	■	■
— 390 hp @ 5,800 rpm			
— 394 lb-ft of torque @ 4,000 rpm			
Variable Valve Event and Lift (VVEL) technology	■	■	■
Emissions – Tier 2-Bin 5 (Fed); LEV2-ULEV (CA)	■	■	■
Nissan Direct Ignition System	■	■	■
Iridium-tipped spark plugs	■	■	■
Electronic drive-by-wire throttle	■	■	■

Drivetrain	SV	SL	Platinum
All-mode 4WD® with 2-speed transfer case (4WD models)	□	□	□
7-speed automatic transmission with Tow/Haul Mode	■	■	■
Lower final drive ratio (2.937:1)	■	■	■
Hill start assist	■	■	■

Brakes	SV	SL	Platinum
13.8" front and rear vented disc brakes	■	■	■
4-wheel Anti-lock Braking System (ABS)	■	■	■
4-wheel Anti-lock Braking System with G-sensor (4WD models)	■	■	■
Electronic Brake force Distribution (EBD)	■	■	■
Brake Assist (BA)	■	■	■
Intelligent Brake Assist (IBA)		□	■

Suspension/Steering	SV	SL	Platinum
Independent double-wishbone front/rear suspension	■	■	■
Auto-leveling rear suspension	■	■	■
Front and rear stabilizer bars	■	■	■
Engine-speed-sensitive power steering	■	■	■

Wheels/Tires	SV	SL	Platinum
18" x 8.0" aluminum-alloy wheels	■		
20" x 8.0" machine-finished aluminum-alloy wheels		■	
20" x 8.0" machine-finished tinted aluminum-alloy wheels			■
P265/70R18 all-season tires	■		
P275/60R20 all-season tires		■	■
Full-size spare tire	■	■	■

Exterior Features	SV	SL	Platinum
Automatic on/off headlights	■	■	■
LED low-beam headlights with integrated signature	■	■	■
Fog lights	D	■	■
Dark-painted roof rails	■	■	■
Dark-painted running boards	■	■	■
Dark-painted overfenders	■	■	■
Chrome grille and door handles	■	■	■
Power folding body-color outside mirrors with turn signal indicators	■		
Power folding chrome outside mirrors with turn signal indicators		■	■
Heated outside mirrors with puddle lights		■	■
Auto-dimming outside mirrors		■	■
Power sliding glass moonroof with one-touch open/close and tilt feature		M	■

Exterior Features (continued)	SV	SL	Platinum
Front and Rear Sonar System (four sensors)	■		
Front and Rear Sonar System (eight sensors)		■	■
Power liftgate	D	■	■
Windshield and front side window UV-reducing solar glass	■	■	■
Side and rear privacy glass	■	■	■
Tow hitch receiver	■	■	■
Seven-pin wiring harness	D	■	■
Trailer brake pre-wiring	D	■	■

Comfort/Convenience	SV	SL	Platinum
Nissan Hard Drive Navigation System with 8.0" touch-screen monitor and Voice Recognition	■	■	■
NavTraffic® and NavWeather® with 3-month trial subscription provided by SiriusXM®¹	■	■	■
Nissan Intelligent Key® with Push Button Ignition	■	■	■
Remote Engine Start System		■	■
Bluetooth® Hands-free Phone System²	■	■	■
Dual Zone Automatic Temperature Control (ATC)	■	■	■
Rear air conditioning with rear controls	■	■	■
Rear seat heater ducts under front seats	■	■	■
In-cabin microfilter	■	■	■
HomeLink® Universal Transceiver	D	■	■
RearView Monitor	■		
Around View® Monitor with Moving Object Detection		■	■
Power windows with front one-touch auto-up/down	■	■	■
Power door locks with auto-locking feature	■	■	■
Cruise control with illuminated steering wheel-mounted controls	■	■	■
Intelligent Cruise Control (ICC)		T	■
Distance Control Assist (DCA)		T	■
Tilt steering column	■	■	■
Variable intermittent windshield wipers	■	■	■
Rain-sensing windshield wipers	■	■	■
Intermittent rear window wiper	■	■	■
Windshield wiper de-icer	■	■	■
Footwell lights		■	■
Auto-dimming rearview mirror	D	■	■
Dual front map lights	■	■	■
Dual second- and third-row reading lights	■	■	■
Four 12-volt DC power outlets	■	■	■
120-volt AC power	■	■	■
Transmission temperature gauge	■	■	■
Sun visors with illuminated vanity mirrors and extension	■	■	■
Lockable glove compartment	■	■	■
Second-row padded center console with wood-tone trim			C
Cup holder lid for second-row center console			C
Driver and front passenger seatback pockets	■	■	■
Front and rear door storage pockets and third-row side trays	■	■	■
Four cup holders	■	■	■
Eight bottle holders	■	■	■
Overhead sunglasses storage	■	■	■
Cargo-area storage under floor	■	■	■
Cargo tie-down hooks (eight)	■	■	■

Seating/Appointments	SV	SL	Platinum
4-way power driver's and front passenger's seat with manual lumbar support	■	■	■
Memory System – driver's seat, steering wheel, and outside mirrors		■	■
Heated front seats	■	■	
Climate-controlled seats (heated and cooled)			■
Heated second-row seats			■
Second-row 60/40 split fold-down bench seat with tip-up easy entry for third row	■	■	■
Second-row fold-down captain's chairs with easy entry for third row			C
Third-row 60/40 split fold-down bench seat	■		
Power third-row 60/40 split fold-down bench seat	D	■	■
Cloth seat trim	■		
Leather-appointed seats		■	■
Leather-wrapped steering wheel	■	■	
Heated leather-wrapped steering wheel			■
Leather-wrapped shift knob	■	■	■
Leather-appointed door trim with double stitching		■	■
Wood-tone trim	■	■	■

Audio/Entertainment	SV	SL	Platinum
Bose® Audio System	■	■	■
SiriusXM® Satellite Radio with 3-month trial subscription¹	■	■	■
Tri-Zone Entertainment System with dual 7" monitors, DVD player with remote control, two wireless head-phones, and audio/video input jacks			■
MP3/WMA CD playback capability	■	■	■
Speed-sensitive volume control	■	■	■
USB connection port for iPod® interface and other compatible devices	■	■	■
Auxiliary audio/video input jacks	■	■	■
Streaming audio via Bluetooth® wireless technology²	■	■	■
Illuminated steering wheel-mounted audio controls	■	■	■
13 speakers, including subwoofer	■	■	■

Safety/Security	SV	SL	Platinum
Nissan Advanced Air Bag System (AABS) with dual-stage supplemental front air bags with seat belt and occupant-classification sensors	■	■	■
Driver and front-passenger seat-mounted side-impact supplemental air bags	■	■	■
Roof-mounted curtain side-impact supplemental air bags for outboard occupant head protection for all three rows	■	■	■
Vehicle Dynamic Control (VDC) with Traction Control System (TCS)	■	■	■
Lane Departure Warning (LDW) with Lane Departure Prevention (LDP)			■
Predictive Forward Collision Warning (PFCW)		T	■
Backup Collision Intervention (BCI)		T	■
Blind Spot Warning (BSW)		T	■
Blind Spot Intervention (BSI)			■
Active Brake Limited Slip (ABLS)	■	■	■
LATCH System (Lower Anchors and Tethers for Children)	■	■	■
Child-safety rear door locks	■	■	■
Tire Pressure Monitoring System (TPMS)	■	■	■
Forward Emergency Braking (FEB)		T	■

## DIMENSIONS/CAPACITIES

Exterior Dimensions – Inches	
Wheelbase	121.1
Overall length	208.9
Overall width	79.9
Overall height	75.8
Track width (front/rear)	67.5/67.9

Interior Dimensions – Inches	
Head room without moonroof (front)	40.9 (SV, SL)
Head room with moonroof (front)	39.8 (SL, Platinum)
Head room (2nd row/3rd row)	40.0/36.4
Leg room (front/2nd row/3rd row)	41.9/41.0/28.4
Hip room (front row/2nd row/ 3rd row)	59.2/58.4/48.8
Shoulder room (front row/2nd row/3rd row)	63.8/63.4/60.5

Capacities	
Seating capacity with 2nd-row bench seat	8
Seating capacity with Captain's Chair Package	7
Fuel tank (gals.)	26
Maximum towing capacity (lbs.)	8,500
Tongue weight capacity (lbs.)	850

Curb Weights – Lbs.			
	SV	SL	Platinum
4x2	5,576	5,672	5,716
4x2 with Captain's Chair Package	–	–	5,694
4x4	5,822	5,917	5,963
4x4 with Captain's Chair Package	–	–	5,941

2017 EPA Fuel Economy Estimates			
City/Highway MPG			
4x2	14/19		
4x4	13/18		

— Actual mileage may vary with driving conditions — use for comparison only.

¹Required monthly subscriptions sold separately for each available SiriusXM feature after trial period, and are continuous until you call SiriusXM to cancel. Installation costs, one-time activation fee, other fees and taxes will apply. Each SiriusXM feature availability is dependent upon vehicle model, trim level, packaging, and/or options, and may only be available in select markets. Satellite Radio U.S. service, NavWeather® service, and SiriusXM® Travel Link® services (if any of the foregoing features are equipped on vehicle) available only to those 18 or older in the 48 contiguous states and D.C. Fees and programming subject to change. Subscriptions governed by Customer Agreement available at [siriusxm.com](http://siriusxm.com). ©2016 Sirius XM Radio Inc. Sirius® XM® and all related marks and logos are trademarks of Sirius XM Radio Inc. ²Availability of specific features is dependent upon the phone's Bluetooth® support. Please refer to your phone Owner's Manual for details. Bluetooth® word mark and logos are owned by Bluetooth SIG, Inc., and any use of such marks by Nissan is under license. See [NissanUSA.com/bluetooth](http://NissanUSA.com/bluetooth) for details. HomeLink® is a registered trademark of Genetec Corporation. Bose® is a registered trademark of The Bose Corporation. iPod® is a registered trademark of Apple, Inc. All rights reserved. iPod® or other external device not included. This brochure is intended for general descriptive and informational purposes only. It is subject to change and does not constitute an offer, representation or warranty (express or implied) by Nissan North America, Inc. Interested parties should confirm the accuracy of any information in this brochure as it relates to a vehicle directly with Nissan North America, Inc., before relying on it to make a purchase decision. Nissan North America, Inc., reserves the right to make changes, at any time, without prior notice, in prices, colors, materials, equipment, specifications, and models and to discontinue models or equipment. Due to continuous product development and other pre- and post-production factors, actual vehicle, materials and specifications may vary from this brochure. Some vehicles shown with optional equipment. See the actual vehicle for complete accuracy. Availability and delivery times for particular models or equipment may vary. Specifications, options and accessories may differ in Hawaii, U.S. territories and other countries. For additional information on availability, options or accessories, see your Nissan dealer or contact Nissan North America, Inc. At [NissanUSA.com](http://NissanUSA.com), you'll find virtual product demonstrations, a way to "build your own Nissan," a dealer locator, and more information about key Nissan support services. Or if you'd prefer, call 1-800-NISSAN-3 for answers to specific questions about Armada® or any other Nissan vehicle. The Nissan names, logos, product names, feature names, and slogans are trademarks owned by or licensed to Nissan Motor Co. Ltd. and/or its North American subsidiaries. **Always wear your seat belt, and please don't drink and drive.** ©2016 Nissan North America, Inc. 17 Armada 1719153-N-7/16-60M-CGI

■ Standard    D Part of SV Driver Package    M Part of SL Moonroof Package  
□ Optional    C Part of Platinum Captain's Chairs Package    T Part of SL Technology Package