

## NISSAN INTELLIGENT MOBILITY™

Nissan Intelligent Mobility guides everything we do. We're using new technologies to transform cars from mere driving machines into assistants. Together the journey is more confident, connected, and exciting. Whether it's cars that assist in the driving task, or highways that charge your EV as you go along, it's all in the very near future. And it's a future already taking shape in the Nissan you drive today.

### SEE ARMADA® COME TO LIFE

Go to [NissanUSA.com](http://NissanUSA.com) and find an interactive brochure for Armada and every Nissan in the lineup. Available on desktop, smartphone, or tablet, it's the full product story – including demos, videos, and complete info on trims, colors, and accessories.



Innovation  
that excites

2019  
**ARMADA®**



<sup>1</sup>Please follow Towing Guidelines. Towing capability varies by configuration. See Nissan Towing Guide and Owner's Manual for additional information. <sup>2</sup>Availability of features varies by model year, model, trim, and package. <sup>3</sup>Available feature. <sup>4</sup>Requires compatible auxiliary media system. See Owner's Manual for details. <sup>5</sup>RearView Monitor and Intelligent Rear View Mirror may not detect every object and do not eliminate blind spots or warn of moving objects. See Owner's Manual for safety information. <sup>6</sup>Intelligent Forward Collision Warning cannot prevent collisions. See Owner's Manual for safety information. <sup>7</sup>Automatic Emergency Braking cannot prevent all collisions and may not provide warning or braking in all conditions. Driver should monitor traffic conditions and brake as needed to prevent collisions. See Owner's Manual for safety information. <sup>8</sup>Intelligent Cruise Control uses limited braking and is not a collision avoidance or warning system. Driver should monitor traffic conditions and brake as needed to prevent collisions. See Owner's Manual for safety information. <sup>9</sup>Intelligent Distance Control uses limited braking and is not a collision avoidance or warning system. Driver should monitor traffic conditions and brake as needed to prevent collisions. See Owner's Manual for safety information. <sup>10</sup>Lane Departure Warning and Intelligent Lane Intervention operate only when lane markings are able to be detected. See Owner's Manual for safety information. <sup>11</sup>Blind Spot Warning cannot prevent collisions and may not detect every object or warn in all situations. Driver should always turn and look before changing lanes. See Owner's Manual for safety information. <sup>12</sup>Intelligent Blind Spot Intervention cannot prevent all collisions and may not detect every object or warn in all situations. Driver should always turn and look before changing lanes. See Owner's Manual for safety information. <sup>13</sup>Intelligent Back-up Intervention may not detect every object. Driver should always turn and check surroundings before driving. See Owner's Manual for safety information. <sup>14</sup>Available services/features may be shown. Compatible connected device may be required. Only use services/features and device when safe and legal to do so. Subject to GPS and wireless network availability and connection, and system/technology limitations. Text rates/data usage/subscription may apply. Some services/features provided by companies not within Nissan or its partners' or agents' control and may be discontinued at any time. For more information, see dealer, Owner's Manual, or [NissanUSA.com/connect/important-information](http://NissanUSA.com/connect/important-information). Terms and conditions of Subscriber Agreement apply. NissanConnect EV features are provided by Nissan North America. Sirius XM Connected Vehicle Services Inc. ("Sirius XM") partners with Nissan North America to provide NissanConnect Services powered by SiriusXM. All stated terms, disclosures and limitations of liability associated with connected vehicle services extend to Sirius XM and its affiliate, Sirius XM Radio Inc. SiriusXM is a registered trademark of Sirius XM Radio Inc. <sup>15</sup>Extra cost option. <sup>16</sup>Brake Assist cannot prevent all collisions and may not provide warning or braking in all conditions. Driver should monitor traffic conditions and brake as needed to prevent collisions. See Owner's Manual for safety information. <sup>17</sup>See Owner's Manual for safety information. <sup>18</sup>Never program while driving. GPS mapping may not be detailed in all areas or reflect current road status. <sup>19</sup>Use Hands Free Text Messaging when parked in a safe location. If you must use while driving, monitor traffic conditions and keep both hands on the steering wheel to prevent collisions. Compatible device required. Message and data rates may apply. <sup>20</sup>Sonar System may not detect every object. Driver should always check surroundings before driving. See Owner's Manual for safety information. <sup>21</sup>Driving is serious business and requires your full attention. If you have to use the connected device while driving, exercise extreme caution at all times so full attention may be given to vehicle operation. <sup>22</sup>Cargo shown for display purposes only. Cargo and load capacity limited by weight and distribution. Always secure cargo. Heavy loading of the vehicle with cargo, especially on the roof, will affect the handling and stability of the vehicle. <sup>23</sup>Air bags are only a supplemental restraint system. Always wear your seat belt. Rear-facing child restraints should not be placed in the front-passenger's seat. All children 12 and under should ride in the rear seat properly secured in child restraints, booster seats, or seat belts according to their size. Air bags will only inflate in certain accidents. See Owner's Manual for safety information. <sup>24</sup>State laws may apply. Review before using. <sup>25</sup>Intelligent Around View® Monitor cannot eliminate blind spots and may not detect every object. Driver should always turn and check surroundings before driving. See Owner's Manual for safety information. <sup>26</sup>Genuine Nissan Accessories are covered by Nissan's Limited Warranty on Genuine Nissan Replacement Parts, Genuine NISMO® S-Tune Parts, and Genuine Nissan Accessories for the longer of 12 months/12,000 miles (whichever occurs first) or the remaining period under the 3-year/36,000-mile (whichever occurs first) Nissan New Vehicle Limited Warranty. Terms and conditions apply. See dealer, Warranty Information Booklet, or [parts.NissanUSA.com](http://parts.NissanUSA.com) for details. <sup>27</sup>Vehicle Dynamic Control cannot prevent collisions due to abrupt steering, carelessness, or dangerous driving technique. It should remain on when driving, except when freeing the vehicle from mud or snow. See Owner's Manual for safety information. <sup>28</sup>Tire Pressure Monitoring System is not a substitute for regular tire pressure checks. See Owner's Manual for safety information. <sup>29</sup>Vehicle must be on for the Easy-Fill Tire Alert to operate. <sup>30</sup>2019 EPA Fuel Economy Estimates. Actual mileage may vary with driving conditions. Use for comparison only. <sup>31</sup>For a period of 36 months/36,000 miles from the date the vehicle is delivered to the first retail buyer or otherwise put into use, whichever is earlier. Bluetooth® is a registered trademark of Bluetooth SIG, Inc. Bose® is a registered trademark of The Bose Corporation. HD Radio® is a registered trademark of iBiquity Digital Corporation. HomeLink® is a registered trademark of Gentex Corporation. The Sirius®, XM®, and SiriusXM® names and all related marks and logos are trademarks of Sirius XM Radio Inc. All other trademarks are the property of their respective owners. This brochure is intended for general descriptive and informational purposes only. It is subject to change and does not constitute an offer, representation or warranty (express or implied) by Nissan North America, Inc. Interested parties should confirm the accuracy of any information in this brochure as it relates to a vehicle directly with Nissan North America, Inc., before relying on it to make a purchase decision. Nissan North America, Inc., reserves the right to make changes, at any time, without prior notice, in prices, colors, materials, equipment, specifications, and models and to discontinue models or equipment. Due to continuous product development and other pre- and post-production factors, actual vehicle, materials and specifications may vary from this brochure. Some vehicles shown with optional equipment. See the actual vehicle for complete accuracy. Availability and delivery times for particular models or equipment may vary. Specifications, options and accessories may differ in Hawaii, U.S. territories and other countries. For additional information on availability, options or accessories, see your Nissan dealer or contact Nissan North America, Inc. At [NissanUSA.com](http://NissanUSA.com), you'll find virtual product demonstrations, a way to "build your own Nissan," a dealer locator, and more information about key Nissan support services. Or if you'd prefer, call 1-800-NISSAN-3 for answers to specific questions about Armada® or any other Nissan vehicle. The Nissan names, logos, product names, feature names, and slogans are trademarks owned by or licensed to Nissan Motor Co. Ltd. and/or its North American subsidiaries. Other trademarks and trade names are those of their respective owners. **Always wear your seat belt, and please drive responsibly.**

©2018 Nissan North America, Inc. <sup>19</sup> Armada®. 1922555-N-7/18-60K-CGI

Get ready for adventure. Refined looks, room for eight and rugged capability are a given. You'll command the road with legendary V8 power, 394 lb-ft of torque, and an 8,500-lb. maximum towing capacity.<sup>1</sup> And with available Nissan Intelligent Mobility™ features connecting you to your world and your surroundings, you'll feel confident no matter where the road takes you.<sup>2</sup> The 2019 Nissan Armada.® Tech that moves you.



Nissan Armada® Platinum shown in Gun Metallic.



Intelligent Rear View Mirror OFF



Intelligent Rear View Mirror ON

### NISSAN INTELLIGENT REAR VIEW MIRROR

Have a full car? No problem. Just flip the switch on the Intelligent Rear View Mirror and you'll get a clear view behind you thanks to cameras installed at the rear of the vehicle. And when you're driving at night, you'll enjoy the enhanced, brighter view.<sup>3, 5</sup>

Intelligent Forward Collision Warning/  
Automatic Emergency Braking<sup>6, 7</sup>



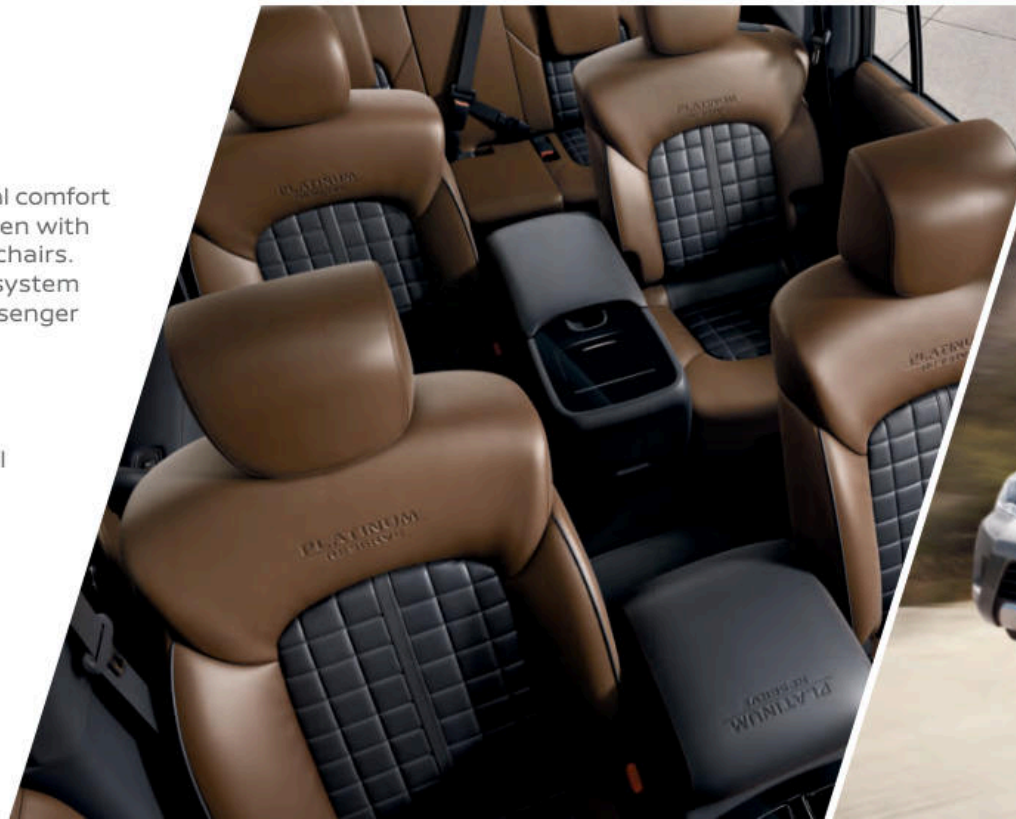
In one of the most advanced Nissan vehicles ever, you can expect confidence from an array of available Nissan Intelligent Mobility features. Whether you're keeping a set distance from the vehicle ahead, changing lanes, or backing out of tight parking spots, these available features can help bring confidence to another level.<sup>2</sup>

- Intelligent Rear View Mirror<sup>3, 5</sup>
- Intelligent Cruise Control<sup>8</sup>
- Intelligent Distance Control<sup>9</sup>
- Intelligent Forward Collision Warning<sup>6</sup>
- Automatic Emergency Braking<sup>7</sup>
- Intelligent Lane Intervention<sup>3, 10</sup>
- Blind Spot Warning<sup>3, 11</sup>
- Intelligent Blind Spot Intervention<sup>3, 12</sup>
- Intelligent Back-up Intervention<sup>3, 13</sup>

### IMPRESSIVE COMFORT AND CAPACITY

Let the whole crew enjoy exceptional comfort with seating for up to eight – or seven with the available second-row captain's chairs. Add in an innovative climate control system that reaches every row, and every passenger can find their ideal zone.

- Heated Front and 2nd-row Seats<sup>3</sup>
- Seating for Up to 8
- Dual Zone Automatic Temperature Control
- Power Return 3rd-row Seats<sup>3</sup>
- Tri-Zone Entertainment System with Two Wireless Headsets<sup>3, 4</sup>



### POWERFUL V8 AND 4WD

Bring a bigger toy with a stunningly powerful Endurance® V8 engine at your command. Count on all 390 hp and 394 lb-ft of torque to make easy work out of hauling with a maximum towing capacity of up to 8,500 lbs.<sup>1</sup> And when the pavement turns to dirt, trust in 4WD to keep things moving.



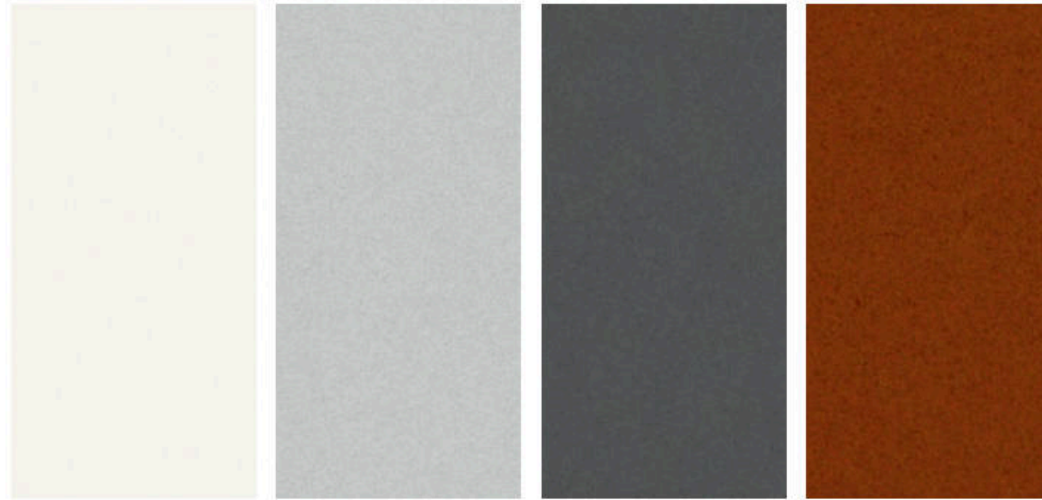
NissanConnect SERVICES  
POWERED BY SIRIUSXM



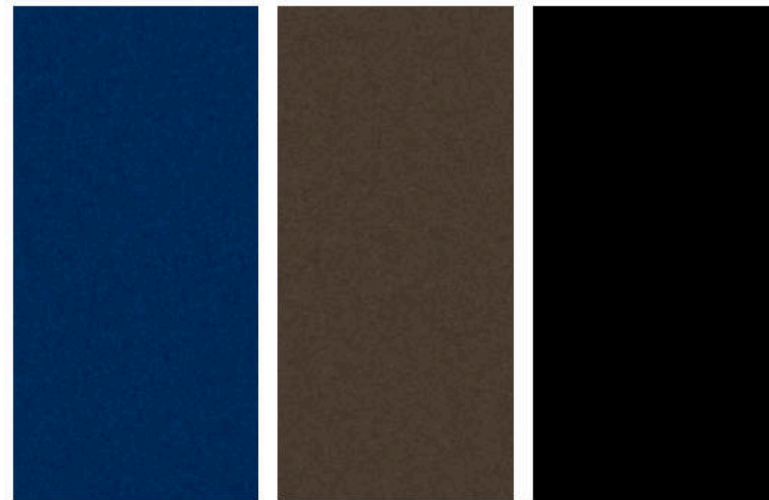
### REMOTE START FROM YOUR PHONE

With NissanConnect Services, you can remotely start your vehicle from nearly anywhere your smartphone works. Need to unlock your vehicle for a friend? Just tap the unlock button on your phone. You can even find your parked vehicle's location. Now that's cool!<sup>14</sup>

## CHOOSE YOUR COLOR



	Pearl White TriCoat <sup>15</sup>				Brilliant Silver Metallic				Gun Metallic				Forged Copper Metallic			
	SV	SL	PLATINUM	PLATINUM RESERVE	SV	SL	PLATINUM	PLATINUM RESERVE	SV	SL	PLATINUM	PLATINUM RESERVE	SV	SL	PLATINUM	PLATINUM RESERVE
CHARCOAL CLOTH	■				■				■				■			
ALMOND LEATHER		■	■								■					
CHARCOAL LEATHER		■	■			■	■			■	■			■		
PREMIUM BLACK/BROWN LEATHER				■												■



	Hermosa Blue Pearl				Mocha Almond Pearl				Super Black			
	SV	SL	PLATINUM	PLATINUM RESERVE	SV	SL	PLATINUM	PLATINUM RESERVE	SV	SL	PLATINUM	PLATINUM RESERVE
CHARCOAL CLOTH	■								■			
ALMOND LEATHER		■	■				■			■	■	
CHARCOAL LEATHER		■	■			■	■			■	■	
PREMIUM BLACK/BROWN LEATHER				■								■

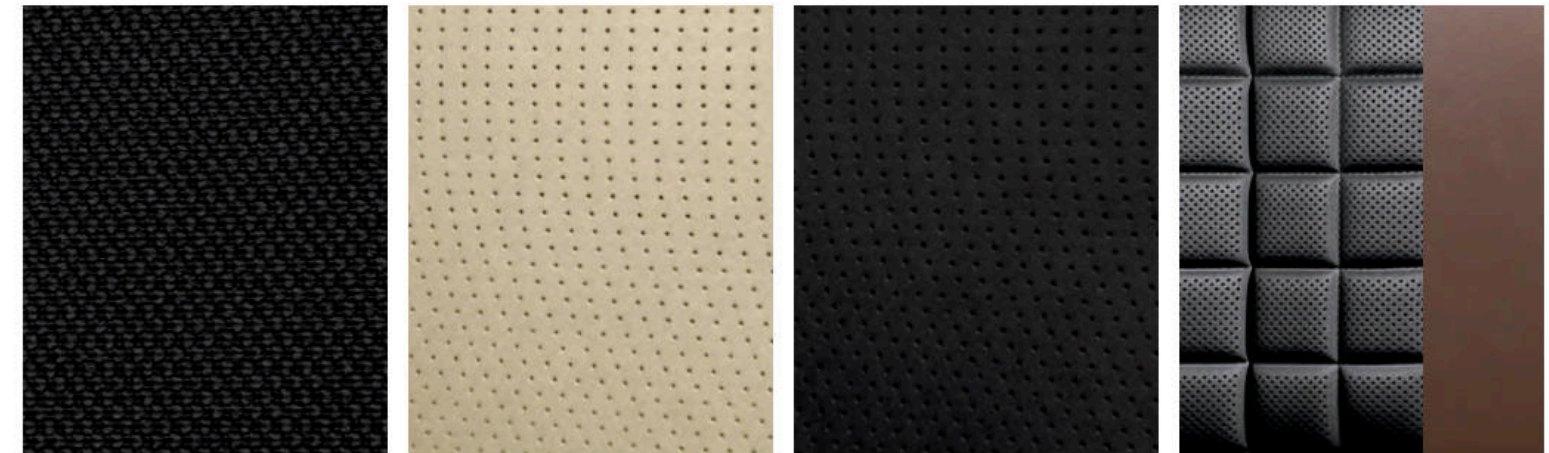
■ Standard

Nissan has taken care to ensure that the color swatches presented here are the closest possible representations of actual vehicle colors. Swatches may vary slightly due to the printing process and whether viewed in daylight, fluorescent or incandescent light. Please see the actual colors at your dealer.

## CHOOSE YOUR INTERIOR



Nissan Armada® Platinum shown in Almond Leather.



Charcoal Cloth SV

Almond Leather SL | Platinum

Charcoal Leather SL | Platinum

Premium Black/Brown Leather Platinum Reserve

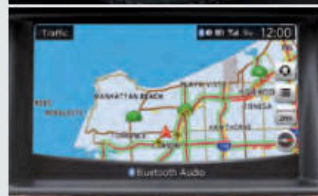
## CHOOSE YOUR TRIM LEVEL

### SV

- 390-hp Endurance® 5.6-liter V8 engine
- 7-speed automatic transmission with Tow/Haul Mode
- Standard 2WD or available 4WD with 2-speed transfer case
- 13.8" front and rear vented disc brakes
- 4-wheel Anti-lock Braking System (ABS)
- Electronic Brake force Distribution (EBD) with Brake Assist<sup>16</sup>
- Hill start assist
- Independent double-wishbone suspension with auto-leveling rear suspension and stabilizer bars
- 18" Aluminum-alloy wheels with P265/70R18 all-season tires
- Intelligent Cruise Control<sup>8</sup>
- Rear Door Alert<sup>17</sup>
- Tow hitch receiver<sup>1</sup>
- Auto-on/off headlights
- LED low-beam headlights with integrated signature
- Dark-painted roof rails and overfenders
- Chrome grille and door handles
- Power-folding outside mirrors with turn signal indicators
- NissanConnect® 8" touch-screen display<sup>14</sup>
- Nissan Navigation System with enhanced voice recognition<sup>18</sup>
- SiriusXM® Traffic and Travel Link® with 3-year complimentary trial access<sup>14</sup>
- NissanConnect® Services powered by SiriusXM® with complimentary trial access to 3-year Select and 6-month Premium Plus packages<sup>9,14</sup>
- Hands-free Text Messaging Assistant<sup>19</sup>
- Nissan Intelligent Key® with Push Button Ignition
- Bluetooth® Hands-free Phone System<sup>14</sup>
- Dual Zone Automatic Temperature Control
- Rear air conditioning with rear controls
- RearView Monitor<sup>5</sup>
- Front and Rear Sonar System<sup>20</sup>
- Three 12-volt DC power outlets<sup>21</sup>
- Cargo-area storage under rear floor<sup>22</sup>
- Eight cargo tie-down hooks<sup>22</sup>
- 10-way power driver's seat
- 8-way power front passenger's seat
- Heated front seats
- Second-row 60/40 split fold-down bench seat
- Third-row 60/40 split fold-down bench seat
- Leather-wrapped steering wheel and shift knob
- Wood-tone trim and black carpeting
- Bose® Audio System with 13 speakers
- SiriusXM® Radio<sup>14</sup> and HD Radio®
- Four USB ports<sup>21</sup>
- Nissan Advanced Air Bag System<sup>23</sup>
- Intelligent Forward Collision Warning<sup>6</sup>
- Automatic Emergency Braking<sup>7</sup>

#### AVAILABLE PACKAGE:

- Driver Package



### SL INCLUDES SV EQUIPMENT PLUS:

- 20" Machine-finished aluminum-alloy wheels
- P275/60R20 all-season tires
- Fog lights
- Power folding chrome outside mirrors with turn signal indicators
- Auto-dimming outside mirrors
- Heated outside mirrors with puddle lights
- Power liftgate
- Remote Engine Start System<sup>24</sup>
- Intelligent Around View® Monitor<sup>25</sup>
- Footwell lights
- Auto-dimming inside rearview mirror
- HomeLink® Universal Transceiver
- Rain-sensing wipers
- 120-volt AC power outlet<sup>21</sup>
- Leather-appointed seats
- Power third-row 60/40 split fold-down bench seat
- Memory System – driver's seat, steering wheel and outside mirrors
- 7-pin wiring harness and trailer brake pre-wiring<sup>1</sup>
- Leather-appointed door trim with double stitching

#### AVAILABLE PACKAGES:

- Premium Package
- Captain's Chairs Package



### PLATINUM INCLUDES SL EQUIPMENT PLUS:

- 20" Machine-finished tinted aluminum-alloy wheels
- Body-color overfenders
- Power sliding moonroof with one touch open/close and tilt feature
- Intelligent Distance Control<sup>9</sup>
- Climate-controlled front seats (heated and cooled)
- Heated leather-wrapped steering wheel
- Heated rear outboard seats
- Tri-Zone Entertainment System with dual 8" monitors, DVD player with remote control, two wireless headphones, and HDMI input<sup>3,4</sup>
- Intelligent Lane Intervention<sup>10</sup>
- Intelligent Blind Spot Intervention<sup>12</sup>
- Intelligent Back-up Intervention<sup>13</sup>
- Intelligent Rear View Mirror<sup>5</sup>
- One additional USB port (five total)<sup>21</sup>
- Rear seat step light
- Windshield wiper de-icer

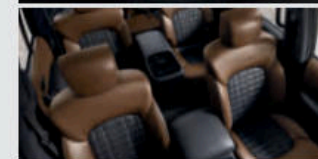
#### AVAILABLE PACKAGE:

- Captain's Chairs Package



### PLATINUM RESERVE INCLUDES PLATINUM EQUIPMENT PLUS:

- 20" Dark chrome-clad aluminum-alloy wheels
- Dark chrome exterior trim
- Second-row fold-down captain's chairs with easy entry for third row
- Second-row padded center console
- Exclusive interior including premium two-tone leather-appointed seats with contrast stitching
- Unique open-pore wood-tone interior trim
- Platinum Reserve badging



CHOOSE YOUR PACKAGE



**DRIVER PACKAGE** | sv

- Fog lights
- Power liftgate
- Auto-dimming interior rearview mirror
- HomeLink® Universal Transceiver
- Power third-row 60/40 split fold-down bench seat
- 7-pin wiring harness and trailer brake pre-wiring<sup>1</sup>



Blind Spot Warning<sup>11</sup>

Intelligent Distance Control<sup>9</sup>

Intelligent Back-Up Intervention<sup>13</sup>



**CAPTAIN'S CHAIRS PACKAGE** | SL, PLATINUM

- Second-row fold-down captain's chairs with easy entry for third row
- Second-row padded center console



**PREMIUM PACKAGE** | SL

- Intelligent Distance Control<sup>9</sup>
- Blind Spot Warning<sup>11</sup>
- Intelligent Back-up Intervention<sup>13</sup>
- Power sliding glass moonroof with one-touch open/close and tilt feature

## CHOOSE YOUR ACCESSORIES



Every Genuine Nissan Accessory is custom-fit, custom-designed and durability-tested. Each one is backed by Nissan's 3-year/36,000-mile (whichever occurs first) limited warranty (if installed by dealer at the time of purchase), and can be financed when installed by dealer at time of purchase.<sup>26</sup>

### A. Illuminated Kick Plates

For a grand entrance every time.

### B. Cargo Net<sup>22</sup>

The easy solution to bringing more.

### C. Wireless Smartphone Charger

Power up without plugging in.

### D. Nissan WiFi & Apps<sup>14</sup>

Connected passengers are happy passengers.

### E. All-season Floor Mats

Neither rain, sleet, nor snow will mess your ride.

### F. Interior Accent Lighting

Starts every trip with a warm glow.

### G. Cargo Area Protector<sup>22</sup>

Preserve and protect your cargo – and your Armada.

### H. Hitch Ball Mount, Class III<sup>1</sup>

We'll hook you up.

#### Additional Accessories:

- Frameless Auto-dimming Rearview Mirror with Universal Remote
- Carpeted Cargo Mat
- Cargo Organizer<sup>22</sup>
- Impact Sensor
- Hatch Tent
- Weight Distributing Hitch Ball Mount, Class IV<sup>1</sup>
- And More

## GENUINE NISSAN ACCESSORIES

# TURN BRAND-NEW INTO ALL YOU

For more information and to shop online for Armada® Genuine Nissan Accessories, go to [bit.ly/19armada-estore](http://bit.ly/19armada-estore)



Nissan Armada® Platinum shown in Pearl White TriCoat with Chrome Side Moldings, Chrome Side Mirror Covers (standard on Platinum), External Ground Lighting, Fog Lights (standard on Platinum), Roof Rail Crossbars,<sup>22</sup> Side Window Deflectors, and Moonroof Wind Deflector.

## SPECIFICATIONS

Engine	SV	SL	Platinum	Platinum Reserve
Endurance* 5.6-liter DOHC 32-valve V8 engine	■	■	■	■
390 hp @ 5,800 rpm				
394 lb.-ft. of torque @ 4,000 rpm				
Variable Valve Event and Lift (VVEL) technology	■	■	■	■
Nissan Direct Ignition System	■	■	■	■
Iridium-tipped spark plugs	■	■	■	■
Electronic drive-by-wire throttle	■	■	■	■

Drivetrain	SV	SL	Platinum	Platinum Reserve
4WD with 2-speed transfer case	□	□	□	□
7-speed automatic transmission with Tow/Haul Mode	■	■	■	■
Lower final drive ratio (2.937:1)	■	■	■	■
Hill start assist	■	■	■	■

Brakes	SV	SL	Platinum	Platinum Reserve
13.8" front and rear vented disc brakes	■	■	■	■
Electronic Brake force Distribution (EBD)	■	■	■	■
Brake Assist <sup>16</sup>	■	■	■	■

Suspension/Steering	SV	SL	Platinum	Platinum Reserve
Independent double-wishbone front/rear suspension	■	■	■	■
Auto-leveling rear suspension	■	■	■	■
Front and rear stabilizer bars	■	■	■	■
Engine-speed-sensitive power steering	■	■	■	■

Wheels/Tires	SV	SL	Platinum	Platinum Reserve
18" x 8.0" aluminum-alloy wheels	■			
20" x 8.0" machine-finished aluminum-alloy wheels		■		
20" x 8.0" machine-finished tinted aluminum-alloy wheels			■	
20" x 8.0" dark chrome-clad aluminum-alloy wheels				■
P265/70R18 all-season tires	■			
P275/60R20 all-season tires		■	■	■
Full-size spare tire	■	■	■	■

Exterior Features	SV	SL	Platinum	Platinum Reserve
Auto on/off headlights	■	■	■	■
LED low-beam headlights with integrated signature	■	■	■	■
Fog lights	D	■	■	■
Dark-painted roof rails and overfenders	■	■	■	■
Body-color overfenders			■	■
Chrome grille and door handles	■	■	■	■
Dark chrome grille, door handles and mirrors				■
Power folding outside mirrors with turn signal indicators	■	■	■	■
Heated outside mirrors with puddle lights		■	■	■
Auto-dimming outside mirrors			■	■
Power sliding glass moonroof with one-touch open/close and tilt feature		P	■	■
Front and Rear Sonar System <sup>20</sup>	■	■	■	■
Power liftgate	D	■	■	■
Tow hitch receiver	■	■	■	■
Seven-pin wiring harness <sup>1</sup>	D	■	■	■
Trailer brake pre-wiring <sup>1</sup>	D	■	■	■

Comfort/Convenience	SV	SL	Platinum	Platinum Reserve
Nissan Navigation System <sup>18</sup>	■	■	■	■
NissanConnect <sup>®</sup> Services powered by SiriusXM <sup>®</sup> with complimentary trial access to 3-year Select and 6-month Premium Plus packages <sup>14</sup>	■	■	■	■
SiriusXM <sup>®</sup> Traffic and Travel Link <sup>®</sup> with 3-year complimentary trial access <sup>14</sup>	■	■	■	■
NissanConnect <sup>®</sup> 8" touch-screen display and enhanced Voice Recognition <sup>14</sup>	■	■	■	■
Hands-free Text Messaging Assistant <sup>19</sup>	■	■	■	■
Nissan Intelligent Key <sup>®</sup> with Push Button Ignition	■	■	■	■
Remote Engine Start System <sup>24</sup>	■	■	■	■
Bluetooth <sup>®</sup> Hands-free Phone System <sup>14</sup>	■	■	■	■
Intelligent Rear View Mirror <sup>2</sup>			■	■
Dual Zone Automatic Temperature Control	■	■	■	■
Rear air conditioning with rear controls	■	■	■	■
Rear seat heater ducts under front seats	■	■	■	■
In-cabin microfilter	■	■	■	■
Rear Door Alert <sup>17</sup>	■	■	■	■
HomeLink <sup>®</sup> Universal Transceiver	D	■	■	■
RearView Monitor <sup>2</sup>	■		■	■
Intelligent Around View <sup>®</sup> Monitor <sup>25</sup>		■	■	■
Illuminated steering wheel-mounted controls	■	■	■	■
Intelligent Cruise Control <sup>8</sup>	■	■	■	■
Intelligent Distance Control <sup>9</sup>		P	■	■
Variable intermittent windshield wipers	■	■	■	■
Rain-sensing windshield wipers	■	■	■	■
Intermittent rear window wiper	■	■	■	■
Windshield wiper de-icer		■	■	■
Footwell lights		■	■	■
Auto-dimming rearview mirror	D	■	■	■
Dual front map lights	■	■	■	■
Dual second- and third-row reading lights	■	■	■	■
Three 12-volt DC power outlets <sup>21</sup>	■	■	■	■
120-volt AC power outlet <sup>21</sup>	■	■	■	■
Transmission temperature gauge	■	■	■	■
Sun visors with illuminated vanity mirrors and extension	■	■	■	■
Second-row padded center console with wood-tone trim		C	C	■
Cup holder lid for second-row center console		C	C	■
Driver and front passenger seatback pockets	■	■	■	■
Four cup holders and eight bottle holders	■	■	■	■
Cargo-area storage under floor <sup>22</sup>	■	■	■	■
Eight cargo tie-down hooks <sup>22</sup>	■	■	■	■

Seating/Appointments	SV	SL	Platinum	Platinum Reserve
10-way power driver's and 8-way power front passenger's seat including 2-way power lumbar support	■	■	■	■
Memory System - driver's seat, steering wheel, and outside mirrors		■	■	■
Heated front seats	■	■		■
Climate-controlled seats (heated and cooled)			■	■
Heated second-row seats			■	■
Second-row 60/40 split fold-down bench seat with tip-up easy entry for third row	■	■	■	■
Second-row fold-down captain's chairs with easy entry for third row		C	C	■

Seating/Appointments (continued)	SV	SL	Platinum	Platinum Reserve
Second-row padded center console		C	C	■
Third-row 60/40 split fold-down bench seat	■			
Power third-row 60/40 split fold-down bench seat	D	■	■	■
Cloth seat trim	■			
Leather-appointed seats		■	■	
Premium two-tone leather-appointed seats				■
Leather-wrapped steering wheel	■	■		
Heated leather-wrapped steering wheel			■	■
Leather-wrapped shift knob	■	■	■	■
Leather-appointed door trim with double stitching	■	■	■	■
Wood-tone trim	■	■	■	
Open-pore wood-tone trim				■
Platinum Reserve embossed badging				■

Audio/Entertainment	SV	SL	Platinum	Platinum Reserve
Bose <sup>®</sup> Audio System with 13 speakers including subwoofer	■	■	■	■
SiriusXM <sup>®</sup> Radio with 3-month complimentary trial access <sup>14</sup>	■	■	■	■
HD Radio <sup>2</sup>	■	■	■	■
Tri-Zone Entertainment System with dual 8" monitors, DVD player with remote control, two wireless headphones, and HDMI input <sup>3,4</sup>			■	■
MP3/WMA CD playback capability	■	■	■	■
Four USB ports <sup>21</sup>	■	■		
Five USB ports <sup>21</sup>			■	■
Streaming audio via Bluetooth <sup>®</sup> wireless technology <sup>14</sup>	■	■	■	■

Safety/Security	SV	SL	Platinum	Platinum Reserve
Nissan Advanced Air Bag System with dual-stage supplemental front air bags with seat belt and occupant-classification sensors <sup>23</sup>	■	■	■	■
Driver and front-passenger seat-mounted side-impact supplemental air bags <sup>23</sup>	■	■	■	■
Roof-mounted curtain side-impact supplemental air bags for outboard occupant head protection for all three rows <sup>23</sup>	■	■	■	■
Vehicle Dynamic Control (VDC) <sup>27</sup> with Traction Control System (TCS)	■	■	■	■
Intelligent Lane Intervention <sup>10</sup>			■	■
Intelligent Forward Collision Warning <sup>6</sup>	■	■	■	■
Automatic Emergency Braking <sup>7</sup>	■	■	■	■
Intelligent Back-up Intervention <sup>15</sup>		P	■	■
Blind Spot Warning <sup>11</sup>		P	■	■
Intelligent Blind Spot Intervention <sup>12</sup>			■	■
Active Brake Limited Slip (ABLS)	■	■	■	■
Rear Door Alert <sup>17</sup>	■	■	■	■
LATCH System (Lower Anchors and Tethers for CHILDREN)	■	■	■	■
Tire Pressure Monitoring System (TPMS) with Easy Fill Tire Alert <sup>28,29</sup>	■	■	■	■

## DIMENSIONS/CAPACITIES

Exterior Dimensions - Inches	
Wheelbase	121.1
Overall length/width/height	208.9/79.9/75.8
Track width (front/rear)	67.5/67.9

Interior Dimensions - Inches	
Head room without moonroof (front)	40.9 (SV, SL)
Head room with moonroof (front)	39.8 (SL, Platinum)
Head room (2nd row/3rd row)	40.0/36.4
Leg room (front/2nd row/3rd row)	41.9/41.0/28.4
Hip room (front row/2nd row/ 3rd row)	59.2/58.4/48.8
Shoulder room (front row/2nd row/3rd row)	63.8/63.4/60.5

Capacities	
Seating capacity with 2nd-row bench seat	8
Seating capacity with Captain's Chair Package	7
Fuel tank (gals.)	26
Maximum towing capacity (lbs.)	8,500
Tongue weight capacity (lbs.)	850

2019 EPA Fuel Economy Estimates <sup>26</sup>	
<b>City/Highway MPG</b>	
4x2	14/19
4x4	13/18

## NISSAN ROADSIDE ASSISTANCE

Your peace of mind is on us. For 36 months or 36,000 miles, whichever comes first, your new Nissan is covered for the following:<sup>31</sup>

- Flat-tire changes
- Trip Interruption benefits
- Jump starts
- Vehicle lockouts
- Emergency fuel delivery

Follow Nissan on:



visit [NissanUSA.com/armada](http://NissanUSA.com/armada)

PRINTED IN POLAND