

NISSAN INTELLIGENT MOBILITY™

Nissan Intelligent Mobility guides everything we do. We're using new technologies to transform cars from mere driving machines into assistants. Together the journey is more confident, connected, and exciting. Whether it's cars that assist in the driving task, or highways that charge your EV as you go along, it's all in the very near future. And it's a future already taking shape in the Nissan you drive today.

SEE ARMADA® COME TO LIFE

Go to NissanUSA.com and find an interactive brochure for Armada and every Nissan model in the lineup. Available on desktop, smartphone, or tablet, it's the full product story – including demos, videos, and complete info on trims, colors, and accessories.



Innovation
that excites

2020
ARMADA®



¹Please follow Towing Guidelines. Towing capability varies by configuration. See Nissan Towing Guide and Owner's Manual for additional information. ²Availability of features vary by vehicle model year, model, trim level, packaging, and options. ³Available feature. ⁴Requires compatible auxiliary media system. See Owner's Manual for details. ⁵RearView Monitor and Intelligent Rear View Mirror may not detect every object and do not eliminate blind spots or warn of moving objects. See Owner's Manual for safety information. ⁶Intelligent Forward Collision Warning cannot prevent collisions. See Owner's Manual for safety information. ⁷Automatic Emergency Braking cannot prevent all collisions and may not provide warning or braking in all conditions. Driver should monitor traffic conditions and brake as needed to prevent collisions. See Owner's Manual for safety information. ⁸Intelligent Cruise Control uses limited braking and is not a collision avoidance or warning system. Driver should monitor traffic conditions and brake as needed to prevent collisions. See Owner's Manual for safety information. ⁹Intelligent Distance Control uses limited braking and is not a collision avoidance or warning system. Driver should monitor traffic conditions and brake as needed to prevent collisions. See Owner's Manual for safety information. ¹⁰Lane Departure Warning and Intelligent Lane Intervention operate only when lane markings are able to be detected. See Owner's Manual for safety information. ¹¹Blind Spot Warning cannot prevent collisions and may not detect every object or warn in all situations. Driver should always turn and look before changing lanes. See Owner's Manual for safety information. ¹²Intelligent Blind Spot Intervention cannot prevent all collisions and may not detect every object or warn in all situations. Driver should always turn and look before changing lanes. See Owner's Manual for safety information. ¹³Intelligent Back-up Intervention may not detect every object. Driver should always turn and check surroundings before driving. See Owner's Manual for safety information. ¹⁴Available services/features may be shown. Compatible connected device may be required. Only use services/features and device when safe and legal to do so. Subject to GPS and wireless network availability and connection, and system/technology limitations. Text rates/data usage/subscription may apply. Some services/features provided by companies not within Nissan or its partners' or agents' control and may be discontinued at any time. For more information, see dealer, Owner's Manual, or NissanUSA.com/connect/important-information. Terms and conditions of Subscriber Agreement apply. NissanConnect EV features are provided by Nissan North America. Sirius XM Connected Vehicle Services Inc. ("Sirius XM") partners with Nissan North America to provide NissanConnect Services powered by SiriusXM. All stated terms, disclosures and limitations of liability associated with connected vehicle services extend to Sirius XM and its affiliate, Sirius XM Radio Inc. SiriusXM is a registered trademark of Sirius XM Radio Inc. ¹⁵Extra cost option. ¹⁶Brake Assist cannot prevent all collisions and may not provide warning or braking in all conditions. Driver should monitor traffic conditions and brake as needed to prevent collisions. See Owner's Manual for safety information. ¹⁷See Owner's Manual for safety information. ¹⁸Never program while driving. GPS mapping may not be detailed in all areas or reflect current road status. ¹⁹Use Hands Free Text Messaging when parked in a safe location. If you must use while driving, monitor traffic conditions and keep both hands on the steering wheel to prevent collisions. Compatible device required. Message and data rates may apply. ²⁰Sonar System may not detect every object. Driver should always check surroundings before driving. See Owner's Manual for safety information. ²¹Driving is serious business and requires your full attention. If you have to use the connected device while driving, exercise extreme caution at all times so full attention may be given to vehicle operation. ²²Cargo shown for display purposes only. Cargo and load capacity limited by weight and distribution. Always secure cargo. Heavy loading of the vehicle with cargo, especially on the roof, will affect the handling and stability of the vehicle. ²³Air bags are only a supplemental restraint system. Always wear your seat belt. Rear-facing child restraints should not be placed in the front-passenger's seat. All children 12 and under should ride in the rear seat properly secured in child restraints, booster seats, or seat belts according to their size. Air bags will only inflate in certain accidents. See Owner's Manual for safety information. ²⁴State laws may apply. Review before using. ²⁵Intelligent Around View® Monitor cannot eliminate blind spots and may not detect every object. Driver should always turn and check surroundings before driving. See Owner's Manual for safety information. ²⁶Genuine Nissan Accessories are covered by Nissan's Limited Warranty on Genuine Nissan Replacement Parts, Genuine NISMO® S-Tune Parts, and Genuine Nissan Accessories for the longer of 12 months/12,000 miles (whichever occurs first) or the remaining period under the 3-year/36,000-mile (whichever occurs first) Nissan New Vehicle Limited Warranty. Terms and conditions apply. See dealer, Warranty Information Booklet, or parts.NissanUSA.com for details. ²⁷Photo is an example only. Nissan vehicle shown may not represent named model or current model year. ²⁸Genuine Nissan Accessory Roof Rail Crossbars have a maximum weight limit of 100 lbs. ²⁹Not a genuine Nissan part/accessory. Not warranted by Nissan. Refer to product manufacturer for warranty details. Nissan Limited Warranty does not cover damages or failures to the vehicle caused by improper installation or alterations of any Nissan-approved accessory or component. Contact your dealer/retailer for details. ³⁰Vehicle Dynamic Control cannot prevent collisions due to abrupt steering, carelessness, or dangerous driving technique. It should remain on when driving, except when freeing the vehicle from mud or snow. See Owner's Manual for safety information. ³¹Tire Pressure Monitoring System is not a substitute for regular tire pressure checks. See Owner's Manual for safety information. ³²Vehicle must be on for the Easy-Fill Tire Alert to operate. ³³2020 EPA Fuel Economy Estimates. Actual mileage may vary with driving conditions. Use for comparison only. ³⁴For a period of 36 months/36,000 miles from the date the vehicle is delivered to the first retail buyer or otherwise put into use, whichever is earlier. Bluetooth® is a registered trademark of Bluetooth SIG, Inc. Bose® is a registered trademark of The Bose Corporation. Facebook® is a registered trademark of Facebook, Inc. Google, YouTube® and other marks are trademarks of Google LLC. HD Radio® is a registered trademark of iBiquity Digital Corporation. HomeLink® is a registered trademark of Gentex Corporation. The Sirius®, XM®, and SiriusXM® names and all related marks and logos are trademarks of Sirius XM Radio Inc. All other trademarks are the property of their respective owners. Twitter® is a registered trademark of Twitter, Inc. Yakima® is a registered trademark of Yakima Products, Inc. This brochure is intended for general descriptive and informational purposes only. It is subject to change and does not constitute an offer, representation or warranty (express or implied) by Nissan North America, Inc. Interested parties should confirm the accuracy of any information in this brochure as it relates to a vehicle directly with Nissan North America, Inc., before relying on it to make a purchase decision. Nissan North America, Inc., reserves the right to make changes, at any time, without prior notice, in prices, colors, materials, equipment, specifications, and models and to discontinue models or equipment. Due to continuous product development and other pre- and post-production factors, actual vehicle, materials and specifications may vary from this brochure. Some vehicles shown with optional equipment. See the actual vehicle for complete accuracy. Availability and delivery times for particular models or equipment may vary. Specifications, options and accessories may differ in Hawaii, U.S. territories and other countries. For additional information on availability, options or accessories, see your Nissan dealer or contact Nissan North America, Inc. At NissanUSA.com, you'll find virtual product demonstrations, a way to "build your own Nissan," a dealer locator, and more information about key Nissan support services. Or if you'd prefer, call 1-800-NISSAN-3 for answers to specific questions about Armada® or any other Nissan vehicle. The Nissan names, logos, product names, feature names, and slogans are trademarks owned by or licensed to Nissan Motor Co. Ltd. and/or its North American subsidiaries. Other trademarks and trade names are those of their respective owners. **Always wear your seat belt, and please drive responsibly.** ©2019 Nissan North America, Inc. '20 Armada®. 2001023-N-7/19-60K-CGI

Get ready for adventure, just not the ordinary kind. What does that mean? Refined looks, room for eight, and rugged capability up the ante of every outing. You'll command the road with legendary V8 power, 394 lb-ft of torque, and an 8,500-lb. maximum towing capacity.¹ And with available driver assistance features, you can feel confident in getting to your destination, whether cruising the interstate or navigating a rock-laden trail.² This is how you take adventure to new heights. This is Nissan Intelligent Mobility.





Intelligent Rear View Mirror OFF



Intelligent Rear View Mirror ON

NISSAN INTELLIGENT REAR VIEW MIRROR

Have a full car? No problem. Just flip the switch on the Intelligent Rear View Mirror and you'll get a clear view behind you, thanks to cameras installed at the rear of the vehicle. And when you're driving at night, you'll enjoy the enhanced, brighter view.^{3,5}



Intelligent Forward Collision Warning/
Automatic Emergency Braking^{6,7}

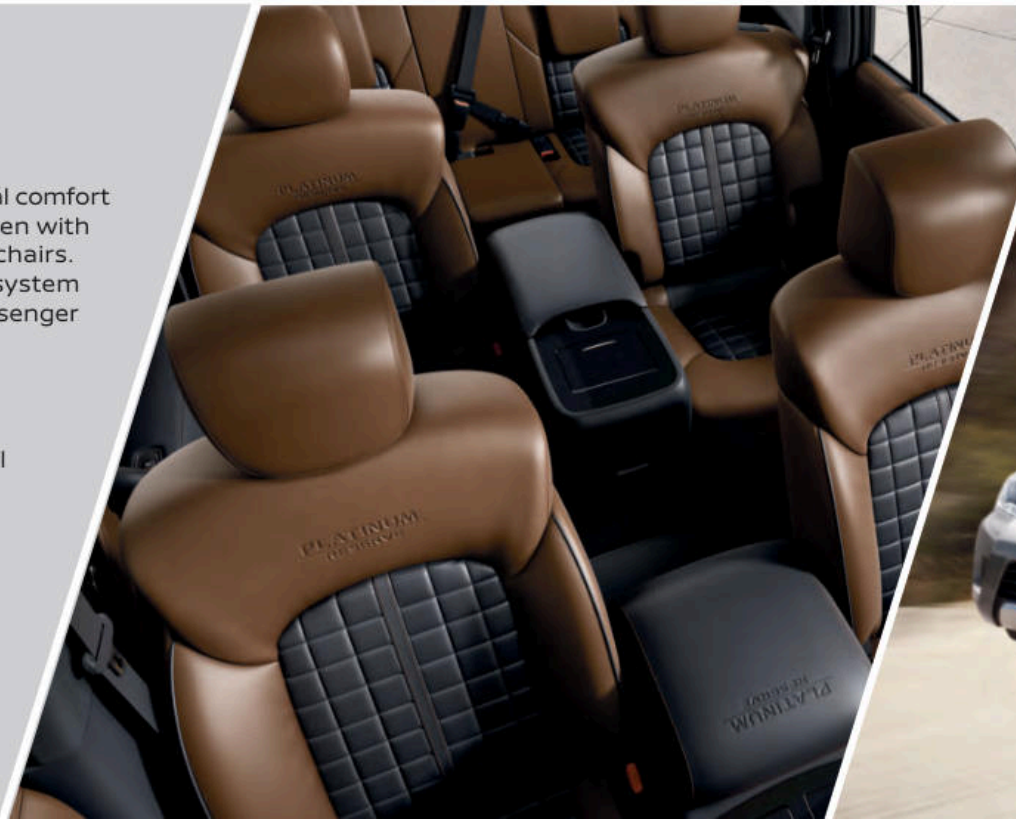
In one of the most advanced Nissan vehicles ever, you can expect confidence from an array of available Nissan Intelligent Mobility features. Whether you're keeping a set distance from the vehicle ahead, changing lanes, or backing out of tight parking spots, these available features can help bring confidence to another level.²

- Intelligent Rear View Mirror^{3,5}
- Intelligent Cruise Control⁸
- Intelligent Distance Control⁹
- Intelligent Forward Collision Warning⁶
- Automatic Emergency Braking⁷
- Intelligent Lane Intervention^{3,10}
- Blind Spot Warning^{3,11}
- Intelligent Blind Spot Intervention^{3,12}
- Intelligent Back-up Intervention^{3,13}

IMPRESSIVE COMFORT AND CAPACITY

Let the whole crew enjoy exceptional comfort with seating for up to eight – or seven with the available second-row captain's chairs. Add in an innovative climate control system that reaches every row, and every passenger can find their ideal zone.

- Heated Front and 2nd-row Seats³
- Seating for Up to 8
- Dual Zone Automatic Temperature Control
- Power Return 3rd-row Seats³
- Tri-Zone Entertainment System with Two Wireless Headphones^{3,4}



POWERFUL V8 AND 4WD

Bring a bigger toy with a stunningly powerful Endurance® V8 engine at your command. Count on all 390 hp and 394 lb-ft of torque to make easy work out of hauling with a maximum towing capacity of up to 8,500 lbs.¹ And when the pavement turns to dirt, trust in available 4WD to help keep things moving.

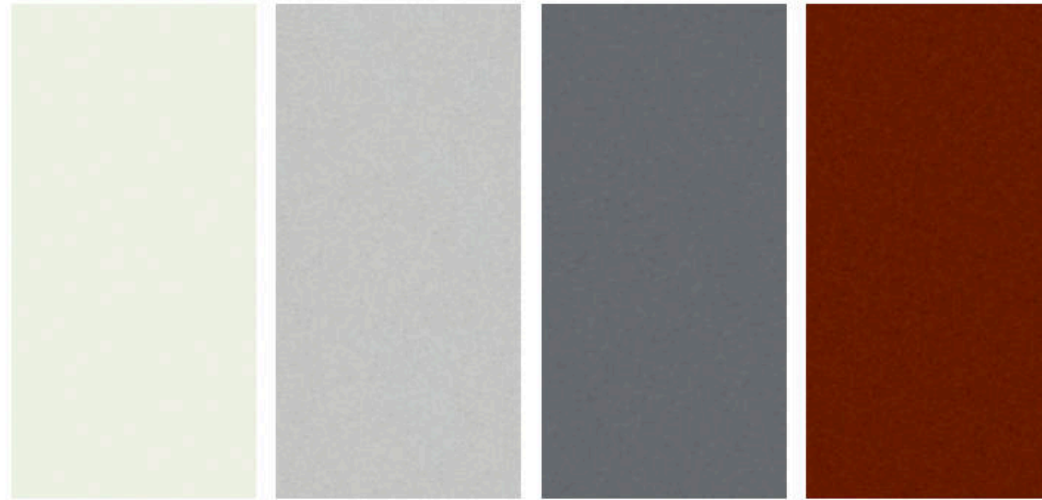


NissanConnect SERVICES
POWERED BY SIRIUSXM

REMOTE START FROM YOUR PHONE

With NissanConnect® Services, you can remotely start your vehicle from nearly anywhere your compatible smartphone works. Need to unlock your vehicle for a friend? Just tap the unlock button on your phone. You can even find your parked vehicle's location. Now that's cool.¹⁴

CHOOSE YOUR COLOR



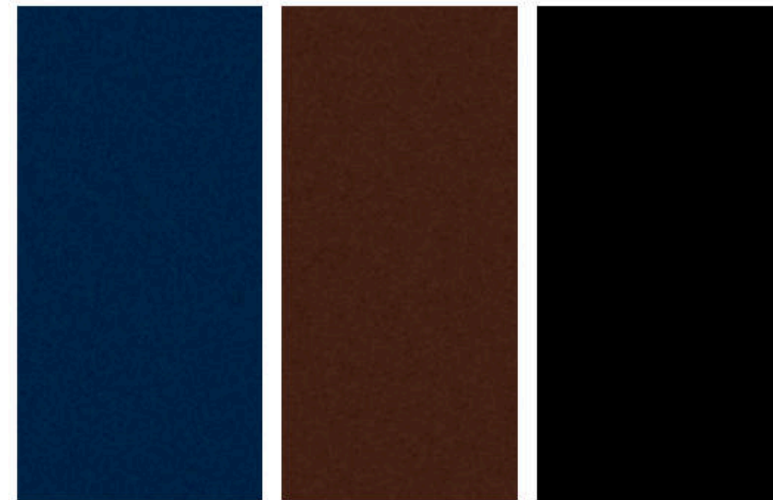
Pearl White TriCoat¹⁵

Brilliant Silver Metallic

Gun Metallic

Forged Copper Metallic

	SV	SL	PLATINUM	PLATINUM RESERVE
CHARCOAL CLOTH	<input checked="" type="checkbox"/>			
ALMOND LEATHER		<input checked="" type="checkbox"/>	<input checked="" type="checkbox"/>	
CHARCOAL LEATHER		<input checked="" type="checkbox"/>	<input checked="" type="checkbox"/>	
PREMIUM BLACK/BROWN LEATHER				<input checked="" type="checkbox"/>



Hermosa Blue Pearl

Mocha Almond Pearl

Super Black

	SV	SL	PLATINUM	PLATINUM RESERVE
CHARCOAL CLOTH	<input checked="" type="checkbox"/>			
ALMOND LEATHER		<input checked="" type="checkbox"/>	<input checked="" type="checkbox"/>	
CHARCOAL LEATHER		<input checked="" type="checkbox"/>	<input checked="" type="checkbox"/>	
PREMIUM BLACK/BROWN LEATHER				<input checked="" type="checkbox"/>

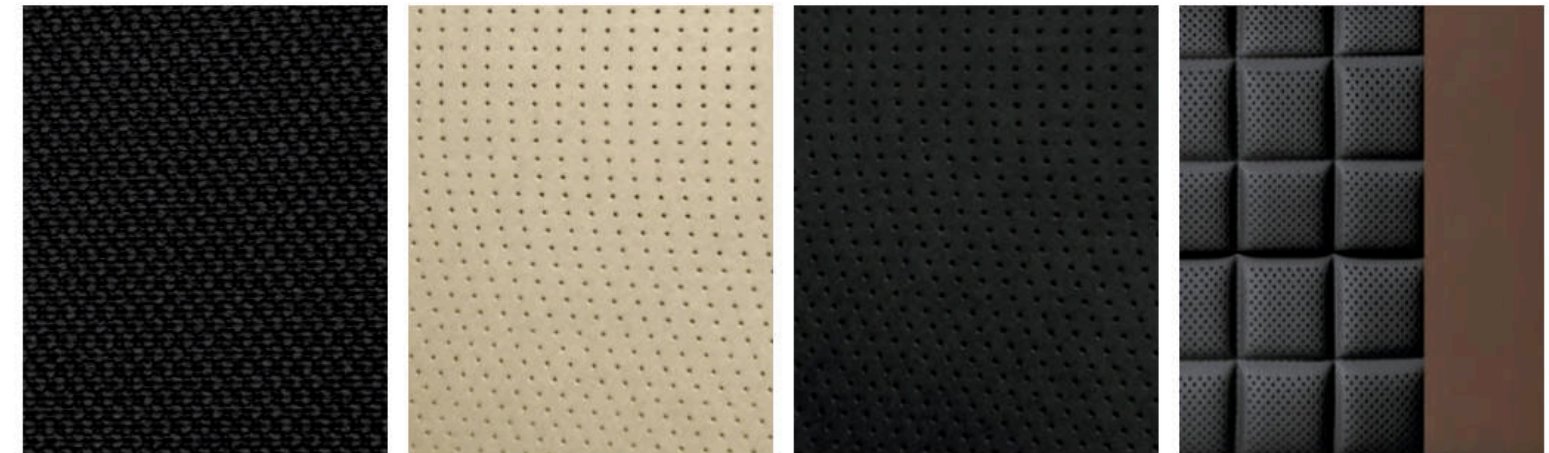
Standard

Nissan has taken care to ensure that the color swatches presented here are the closest possible representations of actual vehicle colors. Swatches may vary slightly due to the printing process and whether viewed in daylight, fluorescent or incandescent light. Please see the actual colors at your dealer.

CHOOSE YOUR INTERIOR



Nissan Armada® Platinum shown in Almond Leather.



Charcoal Cloth
SV

Almond Leather
SL | Platinum

Charcoal Leather
SL | Platinum

Premium Black/Brown Leather
Platinum Reserve

CHOOSE YOUR TRIM LEVEL

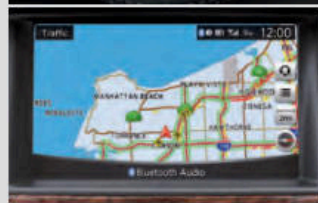
SV

- 390-hp Endurance® 5.6-liter V8 engine
- 7-speed automatic transmission with Tow/Haul Mode
- Standard 2WD or available 4WD with 2-speed transfer case
- 13.8" front and rear vented disc brakes
- 4-wheel Anti-lock Braking System (ABS)
- Electronic Brake force Distribution (EBD) with Brake Assist¹⁶
- Hill start assist
- Independent double-wishbone suspension with auto-leveling rear suspension and stabilizer bars
- 18" Aluminum-alloy wheels with P265/70R18 all-season tires
- Intelligent Cruise Control⁸
- Rear Door Alert¹⁷
- Tow hitch receiver¹
- Auto-on/off headlights
- LED low-beam headlights with integrated signature
- Dark-painted roof rails and side step rails
- Dark-painted overfenders
- Chrome grille and door handles
- Power heated and folding outside mirrors with turn signal indicators
- NissanConnect® 8" touch-screen display¹⁴
- Nissan Navigation System¹⁸
- Voice Recognition for navigation and audio¹⁸

AVAILABLE PACKAGE:

- Driver Package

- SiriusXM® Traffic and Travel Link® with 3-year complimentary trial access¹⁴
- NissanConnect® Services powered by SiriusXM® with complimentary trial access to 3-year Select and 6-month Premium Plus packages¹⁴
- Hands-free Text Messaging Assistant¹⁹
- Nissan Intelligent Key® with Push Button Ignition
- Bluetooth® Hands-free Phone System¹⁴
- Dual Zone Automatic Temperature Control
- Rear air conditioning with rear controls
- RearView Monitor⁵
- Front and Rear Sonar System²⁰
- Three 12-volt DC power outlets²¹
- Cargo-area storage under rear floor²²
- Eight cargo tie-down hooks²²
- 10-way power driver's seat
- 8-way power front-passenger's seat
- Heated front seats
- Second-row 60/40 split fold-down bench seat
- Third-row 60/40 split fold-down bench seat
- Leather-wrapped steering wheel and shift knob
- Wood-tone trim and black carpeting
- Bose® Audio System with 13 speakers
- SiriusXM® Radio¹⁴ and HD Radio®
- Four USB ports²¹
- Nissan Advanced Air Bag System²³
- Intelligent Forward Collision Warning⁶
- Automatic Emergency Braking⁷



SL INCLUDES SV EQUIPMENT PLUS:

- 20" Machine-finished aluminum-alloy wheels
- P275/60R20 all-season tires
- Fog lights
- Power folding chrome outside mirrors with turn signal indicators
- Auto-dimming outside mirrors
- Outside mirrors with puddle lights
- Power liftgate
- Remote Engine Start System²⁴
- Intelligent Around View® Monitor²⁵
- Footwell lights

AVAILABLE PACKAGES:

- Premium Package
- Captain's Chairs Package

- Auto-dimming inside rearview mirror
- HomeLink® Universal Transceiver
- Rain-sensing wipers
- 120-volt AC power outlet²¹
- Leather-appointed seats
- Power third-row 60/40 split fold-down bench seat
- Memory System – driver's seat, steering wheel, and outside mirrors
- 7-pin wiring harness and trailer brake pre-wiring¹
- Leather-appointed door trim with double stitching

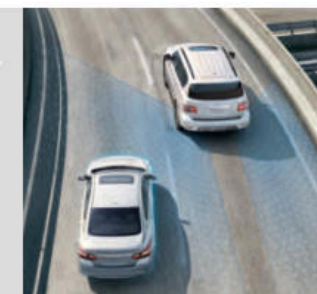


PLATINUM INCLUDES SL EQUIPMENT PLUS:

- 20" Machine-finished tinted aluminum-alloy wheels
- Body-color overfenders
- Power sliding moonroof with one touch open/close and tilt feature
- Intelligent Distance Control⁹
- Climate-controlled front seats (heated and cooled)
- Heated leather-wrapped steering wheel
- Heated rear outboard seats
- Tri-Zone Entertainment System with dual 8" monitors, DVD player with remote control, two wireless headphones, and HDMI input^{3, 4}
- Intelligent Lane Intervention¹⁰
- Intelligent Blind Spot Intervention¹²
- Intelligent Back-up Intervention¹³
- Intelligent Rear View Mirror⁵
- One additional USB port (five total)²¹
- Rear-seat step light
- Windshield wiper de-icer

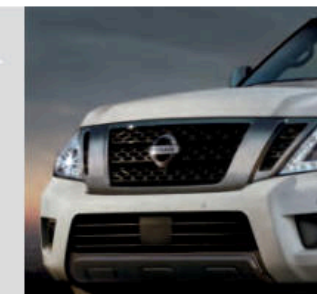
AVAILABLE PACKAGES:

- Captain's Chairs Package
- 22" Wheel Package



PLATINUM RESERVE INCLUDES PLATINUM EQUIPMENT PLUS:

- 22" Forged aluminum-alloy wheels
- Dark chrome exterior trim
- Second-row fold-down captain's chairs with easy entry for third row
- Second-row padded center console with cup holders
- Exclusive interior, including premium two-tone leather-appointed seats with contrast stitching
- Unique open-pore wood-tone and Black Quartz interior trim
- Platinum Reserve badging



CHOOSE YOUR PACKAGE



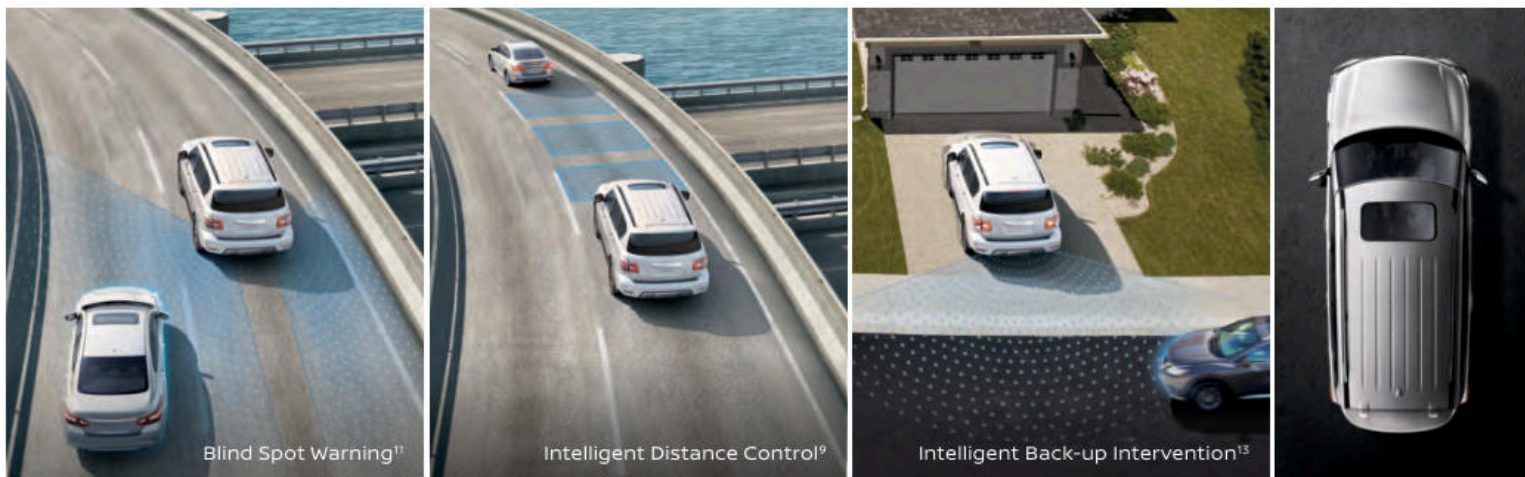
DRIVER PACKAGE | sv

- Fog lights
- Power liftgate
- Auto-dimming interior rearview mirror
- HomeLink® Universal Transceiver
- Power third-row 60/40 split fold-down bench seat
- 7-pin wiring harness and trailer brake pre-wiring¹



CAPTAIN'S CHAIRS PACKAGE | SL, PLATINUM

- Second-row fold-down captain's chairs with easy entry for third row
- Second-row padded center console with cup holders



PREMIUM PACKAGE | SL

- Intelligent Distance Control⁹
- Blind Spot Warning¹¹
- Intelligent Back-up Intervention¹³
- Power sliding glass moonroof with one-touch open/close and tilt feature



22" WHEEL PACKAGE | PLATINUM

- 22" 14-spoke forged aluminum-alloy wheels
- P275/50R22 all-season tires

CHOOSE YOUR ACCESSORIES



Every Genuine Nissan Accessory is custom-fit, custom-designed, and durability-tested. Each one is backed by Nissan's 3-year/36,000-mile (whichever occurs first) limited warranty (if installed by dealer at the time of purchase), and can be financed when installed by dealer at time of purchase.²⁶

A. Illuminated Kick Plates

For a grand entrance every time.

B. Cargo Net²²

The easy solution to bringing more.

C. Tablet Holder²⁷

Bringing a tablet? Now there's a perfect place for it.

D. Interior Accent Lighting

Starts every trip with a warm glow.

E. All-Season Floor Mats

Neither rain, sleet, nor snow will mess your ride.

F. Yakima® SkyBox 16 Cargo Box^{22, 27, 28, 29}

Now there's no excuse for packing light.

G. All-Season Cargo Area Protector²²

Preserve and protect your cargo – and your Armada.

H. Hitch Ball Mount, Class III¹

We'll hook you up.

Additional Accessories:

- Frameless Auto-dimming Rearview Mirror with Universal Remote
- Carpeted Cargo Area Protector²²
- Cargo Organizer²²
- Impact Sensor
- Hatch Tent
- Weight Distributing Hitch Ball Mount, Class IV¹
- And More

GENUINE NISSAN ACCESSORIES

TURN BRAND-NEW INTO ALL YOU

For more information and to shop online for Armada® Genuine Nissan Accessories, go to bit.ly/20armada-estore



Nissan Armada® Platinum shown in Pearl White TriCoat with Chrome Side Moldings, Chrome Side Mirror Covers (standard on Platinum), Exterior Ground Lighting, Roof Rail Crossbars,^{22, 28} Side-window Deflectors, and Moonroof Wind Deflector.

SPECIFICATIONS

Engine	SV	SL	Platinum	Platinum Reserve
Endurance* 5.6-liter DOHC 32-valve V8 engine	■	■	■	■
390 hp @ 5,800 rpm				
394 lb-ft of torque @ 4,000 rpm				
Variable Valve Event and Lift (VVEL) technology	■	■	■	■
Nissan Direct Ignition System	■	■	■	■
Iridium-tipped spark plugs	■	■	■	■
Electronic drive-by-wire throttle	■	■	■	■

Drivetrain	SV	SL	Platinum	Platinum Reserve
4WD with 2-speed transfer case	□	□	□	□
7-speed automatic transmission with Tow/Haul Mode	■	■	■	■
Final drive ratio (2.937:1)	■	■	■	■

Brakes	SV	SL	Platinum	Platinum Reserve
13.8" front and rear vented disc brakes	■	■	■	■
Electronic Brake force Distribution (EBD)	■	■	■	■
Brake Assist*	■	■	■	■

Suspension/Steering	SV	SL	Platinum	Platinum Reserve
Independent double-wishbone front/rear suspension	■	■	■	■
Auto-leveling rear suspension	■	■	■	■
Front and rear stabilizer bars	■	■	■	■
Engine-speed-sensitive power steering	■	■	■	■

Driver Assistance Technologies	SV	SL	Platinum	Platinum Reserve
Intelligent Cruise Control*	■	■	■	■
Intelligent Distance Control*		P	■	■
Intelligent Lane Intervention ¹⁰			■	■
Intelligent Forward Collision Warning*	■	■	■	■
Automatic Emergency Braking ⁷	■	■	■	■
Intelligent Back-up Intervention ¹⁵		P	■	■
Blind Spot Warning ¹¹		P	■	■
Intelligent Blind Spot Intervention ¹²			■	■
Intelligent Rear View Mirror*			■	■
RearView Monitor*	■			
Intelligent Around View* Monitor ²⁵		■	■	■
Front and Rear Sonar System ²⁰	■	■	■	■
Vehicle Dynamic Control (VDC) ³⁰ with Traction Control System (TCS)	■	■	■	■
Active Brake Limited Slip (ABLS)	■	■	■	■
Hill start assist	■	■	■	■

Wheels/Tires	SV	SL	Platinum	Platinum Reserve
18" x 8.0" aluminum-alloy wheels	■			
20" x 8.0" machine-finished aluminum-alloy wheels		■		
20" x 8.0" machine-finished tinted aluminum-alloy wheels			■	
22" x 8.0" forged aluminum-alloy wheels			W	■
P265/70R18 all-season tires	■			
P275/60R20 all-season tires		■	■	■
P275/50R22 all-season tires			W	■

Exterior Features	SV	SL	Platinum	Platinum Reserve
Auto on/off headlights	■	■	■	■
LED low-beam headlights with integrated signature	■	■	■	■
Fog lights	D	■	■	■
Dark-painted roof rails and side step rails	■	■	■	■
Dark-painted overfenders	■	■		
Body-color overfenders			■	■
Chrome grille and door handles	■	■	■	
Dark chrome grille, door handles, and mirrors			■	■
Power heated and folding outside mirrors with turn signal indicators	■	■	■	■
Outside mirrors with puddle lights		■	■	■
Auto-dimming outside mirrors			■	■
Power sliding glass moonroof with one-touch open/close and tilt feature		P	■	■
Power liftgate	D	■	■	■
Tow hitch receiver ¹	■	■	■	■
Seven-pin wiring harness and trailer brake pre-wiring ¹	D	■	■	■

Comfort/Convenience	SV	SL	Platinum	Platinum Reserve
Nissan Intelligent Key* with Push Button Ignition	■	■	■	■
Remote Engine Start System ²⁴	■	■	■	■
Dual Zone Automatic Temperature Control	■	■	■	■
Rear air conditioning with rear controls	■	■	■	■
Rear seat heater ducts under front seats	■	■	■	■
In-cabin microfilter	■	■	■	■
Rear Door Alert ¹⁷		■	■	■
HomeLink* Universal Transceiver	D	■	■	■
Variable intermittent windshield wipers	■	■	■	■
Rain-sensing windshield wipers	■	■	■	■
Intermittent rear window wiper	■		■	■
Windshield wiper de-icer		■	■	■
Footwell lights		D	■	■
Auto-dimming rearview mirror	■	■	■	■
Dual front map lights	■	■	■	■
Dual second- and third-row reading lights	■	■	■	■
Three 12-volt DC power outlets ²¹	■	■	■	■
120-volt AC power outlet ²¹	■	■	■	■
Transmission temperature gauge	■	■	■	■
Sun visors with illuminated vanity mirrors and extension	■	■	■	■
Driver and front-passenger seatback pockets	■	■	■	■
Four cup holders and eight bottle holders	■	■	■	■
Cargo-area storage under floor ²²	■	■	■	■
Eight cargo tie-down hooks ²²	■	■	■	■

Seating/Appointments	SV	SL	Platinum	Platinum Reserve
10-way power driver's and 8-way power front-passenger's seat, including 2-way power lumbar support	■	■	■	■
Memory System - driver's seat, steering wheel, and outside mirrors		■	■	■
Heated front seats	■	■		
Climate-controlled front seats (heated and cooled)			■	■

Seating/Appointments (continued)	SV	SL	Platinum	Platinum Reserve
Heated second-row seats			■	■
Second-row 60/40 split fold-down bench seat with tip-up easy entry for third row	■	■	■	
Second-row fold-down captain's chairs with easy entry for third row		C	C	■
Second-row padded center console with cup holders		C	C	■
Third-row 60/40 split fold-down bench seat	■			
Power third-row 60/40 split fold-down bench seat	D	■	■	■
Cloth seat trim	■			
Leather-appointed seats		■	■	
Premium two-tone leather-appointed seats				■
Leather-wrapped steering wheel	■	■		
Heated leather-wrapped steering wheel	■	■	■	■
Leather-wrapped shift knob	■	■	■	■
Leather-appointed door trim with double stitching	■	■	■	■
Wood-tone trim	■	■	■	
Open-pore wood-tone and Black Quartz trim				■
Platinum Reserve embossed badging				■

Infotainment	SV	SL	Platinum	Platinum Reserve
NissanConnect* 8" touch-screen display ¹⁴	■	■	■	■
Nissan Navigation System ¹⁸	■	■	■	■
SiriusXM* Traffic and Travel Link* with 3-year complimentary trial access ¹⁴	■	■	■	■
NissanConnect* Services powered by SiriusXM* with complimentary trial access to 3-year Select and 6-month Premium Plus packages ¹⁴	■	■	■	■
Voice Recognition for navigation and audio ¹⁸	■	■	■	■
Hands-free Text Messaging Assistant ¹⁹	■	■	■	■
Bluetooth* Hands-Free Phone System ¹⁴	■	■	■	■
Bose* Audio System with 13 speakers, including subwoofer	■	■	■	■
SiriusXM* Radio with 3-month complimentary trial access ¹⁴	■	■	■	■
HD Radio ⁷	■	■	■	■
Tri-Zone Entertainment System with dual 8" monitors, DVD player with remote control, two wireless headphones, and HDMI input ^{3,4}			■	■
MP3/WMA CD playback capability	■	■	■	■
Four USB ports ²¹	■	■	■	■
Five USB ports ²¹			■	■
Bluetooth* streaming audio ¹⁴	■	■	■	■
Illuminated steering wheel-mounted controls	■	■	■	■

Safety/Security	SV	SL	Platinum	Platinum Reserve
Nissan Advanced Air Bag System with dual-stage supplemental front air bags with seat belt and occupant-classification sensors ²³	■	■	■	■
Driver and front-passenger seat-mounted side-impact supplemental air bags ²²	■	■	■	■
Roof-mounted curtain side-impact supplemental air bags for outboard occupant head protection for all three rows ²²	■	■	■	■
LATCH System (Lower Anchors and Tethers for Children)	■	■	■	■
Tire Pressure Monitoring System (TPMS) with Easy Fill Tire Alert ^{31,32}	■	■	■	■

DIMENSIONS/CAPACITIES/MPG

Exterior Dimensions - Inches	
Wheelbase	121.1
Overall length/width/height	208.9/79.9/75.8
Track width (front/rear)	67.5/67.9

Interior Dimensions - Inches	
Head room without moonroof (front)	40.9 (SV, SL)
Head room with moonroof (front)	39.8 (SL, Platinum)
Head room (2nd row/3rd row)	40.0/36.4
Leg room (front row/2nd row/3rd row)	41.9/41.0/28.4
Hip room (front row/2nd row/3rd row)	59.2/58.4/48.8
Shoulder room (front row/2nd row/3rd row)	63.8/63.4/60.5

Capacities	
Seating capacity with 2nd-row bench seat	8
Seating capacity with Captain's Chair Package	7
Fuel tank (gals.)	26
Maximum towing capacity (lbs.) ¹	8,500
Tongue weight capacity (lbs.)	850

2020 EPA Fuel Economy Estimates ²¹	
City/Highway MPG	
4x2	14/19
4x4	13/18

NISSAN ROADSIDE ASSISTANCE

Your peace of mind is on us. For 36 months or 36,000 miles, whichever comes first, your new Nissan vehicle is covered for the following:¹⁴

- Flat-tire changes
- Trip Interruption benefits
- Jump starts
- Vehicle lockouts
- Emergency fuel delivery

Follow Nissan on:



visit NissanUSA.com/armada

PRINTED IN POLAND