

NISSAN

ARMADA®

2025



¹Feature availability varies by vehicle model year, model, trim level, packaging and options. ²Intelligent Four-Wheel Drive cannot prevent collisions or provide enhanced traction in all conditions. Always monitor traffic and weather conditions. ³Extra cost option. ⁴Cargo shown for display purposes only. Cargo and load capacity limited by weight and distribution. Always secure cargo. Heavy loading of the vehicle with cargo, especially on the roof, will affect the handling and stability of the vehicle. ⁵Genuine Nissan Accessory Roof Rail Crossbars have a maximum weight limit of 165 lbs. ⁶Affiliated: Yakima® accessories shown are not genuine Nissan parts/accessories. Not warranted by Nissan. Refer to product manufacturer for warranty details. Nissan limited warranty does not cover damages or failures to the vehicle caused by improper installation or alterations of any accessory or component. Contact your dealer for details. ⁷See [NissanUSA.com/connect/legal](https://www.nissanusa.com/connect/legal) for more NissanConnect features/services information. ⁸Invisible Hood View cannot eliminate blind spots and does not warn of moving objects. Driver should always check surroundings before driving. See Owner's Manual for safety information. ⁹Information displayed is dependent on how vehicle is equipped. Driving is serious business and requires your full attention. If you have to use the feature while driving, exercise extreme caution at all times so full attention may be given to vehicle operation. ¹⁰ProPILOT Assist 21 can't prevent collisions. Driver at all times responsible to maintain safety by monitoring traffic, controlling vehicle, and if needed steer, brake or accelerate. System works only when lane markings detected and does not function in all weather, traffic and road conditions. See Owner's Manual for safety information. NissanConnect Services subscription required. See [NissanUSA.com/connect/legal](https://www.nissanusa.com/connect/legal). ¹¹Up to 8,500 lbs. maximum towing for 2025 Armada. Towing capacity varies by configuration. See Nissan Towing Guide and Owner's Manual for additional information. Cargo and load capacity limited by weight and distribution. Always secure cargo. ¹²Towing capacity varies by configuration. See Nissan Towing Guide and Owner's Manual for additional information. Always secure cargo. ¹³HD Enhanced Intelligent Around View® Monitor and 3D Enhanced Intelligent Around View® Monitor cannot eliminate blind spots and may not detect every object. Driver should always turn and check surroundings before driving. See Owner's Manual for safety information. ¹⁴Blind Spot Warning, Intelligent Blind Spot Intervention,[®] and Trailer Blind Spot Warning cannot prevent all collisions and may not detect every object or warn in all situations. Driver should always turn and look before changing lanes. See Owner's Manual for safety information. ¹⁵Driving is serious business and requires your full attention. If you have to use the connected device while driving, exercise extreme caution at all times so full attention may be given to vehicle operation. External device not included. ¹⁶Feature availability varies by vehicle model year, model, trim level, packaging and options. **Consumer activation of NissanConnect® Services SELECT package ("Package") required.** Package trial period included with eligible new vehicle purchase or lease. Trial period may be subject to change or termination at any time and without notice. After trial period ends, monthly subscription fee required. Driving is serious business and requires your full attention. Only use features when safe and legal to do so. Never program while driving. GPS mapping may not be detailed in all areas or reflect current road status. Connectivity service required. App subscriptions may be required. Data rates may apply. Subject to third party service availability. Should such service providers terminate or restrict service or features, service or features may be suspended or terminated without notice or with no liability to Nissan or its partners or agents. Google, Google Play and Google Maps are trademarks of Google LLC. For more information, see [NissanUSA.com/connect/legal](https://www.nissanusa.com/connect/legal). ¹⁷Color/interior option not yet available for purchase. Expected availability mid-January 2025. ¹⁸ProPILOT Assist 1.0 and ProPILOT Assist 1.1 can't prevent collisions. Driver at all times responsible to maintain safety by monitoring traffic, controlling vehicle, and if needed steer, brake or accelerate. System works only when lane markings detected and does not function in all weather, traffic and road conditions. See Owner's Manual for safety information. ¹⁹Nissan Safety Shield technologies can't prevent all collisions or warn in all situations. See Owner's Manual for important safety information. ²⁰Automatic Emergency Braking with Pedestrian Detection cannot prevent all collisions and may not provide warning or braking in all conditions. Driver should monitor traffic conditions and brake as needed to prevent collisions. See Owner's Manual for safety information. ²¹Lane Departure Warning and Intelligent Lane Intervention only operate when lane markings or road edge (if equipped) are detectable. See Owner's Manual for safety information. ²²Rear Cross Traffic Alert may not detect all vehicles. See Owner's Manual for safety information. ²³Rear Automatic Braking cannot prevent all collisions and may not provide warning or braking in all conditions. Driver should always turn and check surroundings before driving and brake as needed to prevent collisions. See Owner's Manual for safety information. ²⁴Remote Engine Start System to be used only in accordance with laws or rules in effect in your vehicle's location. ²⁵120-volt power outlet is intended only for use with compatible items. Please check specifications of wattage and amperage of items to be plugged in to determine compatibility. ²⁶Do not ride in a moving vehicle when the seatback is reclined. For the most effective protection, the seat should be upright. See Owner's Manual for safety information. ²⁷Available only on Nissan vehicles with AT&T-compatible in-vehicle Wi-Fi hotspot capability. Subject to third party service availability. Trial activation required. Trial ends when all data is used or period ends, whichever comes first. Use features only when safe and legal. Data charges may apply. **Subject to AT&T terms and conditions and its privacy policy, and are not within Nissan's control. Visit www.att.com/csa for complete terms and conditions.** Trial subscription is subject to change or early termination at any time without notice. Trademarks and trade names are those of their respective owners. ²⁸Availability may vary. NissanConnect® Services subscription may be required. Always read and follow instructions for safe update procedures. You may contact Nissan at 1-800-333-0207 for assistance with software updates. You may also visit your local Nissan dealer; dealership charges may apply. ²⁹Feature availability varies by vehicle model year, model, trim level, packaging and options. Connectivity service may be required. Alexa is Amazon's cloud-based voice service. Subject to third party service availability. Amazon, Alexa, Echo, and all related marks are trademarks of Amazon.com, Inc. or its affiliates. For more information see [NissanUSA.com/connect/legal](https://www.nissanusa.com/connect/legal). ³⁰In-vehicle myQ Garage app connection and connectivity services required. myQ Connected Garage Control ("myQ Product(s)") are owned and operated by Chamberlain Group LLC ("CG"), use of myQ Products are subject to myQ Terms of Service (<https://www.myq.com/terms-of-use>), and are not within Nissan's control. Nissan does not warrant and is not responsible for consequential, incidental, or other damages caused by any myQ Product defects and incompatibility of any myQ Product with customer's garage door opener. Data rates may apply. Subject to availability of myQ Products. Contact CG for myQ Products information, including compatibility and warranty. ³¹**Nissan vehicle with "SiriusXM with 360L" capability:** SiriusXM with 360L trial period is included with the purchase or lease of a new Nissan vehicle if: (i) vehicle is equipped with SiriusXM with 360L capability and (ii) vehicle is purchased or leased from new Nissan dealer stock. Trial period begins on the purchase or lease date of the qualifying new Nissan vehicle. SiriusXM with 360L is owned and operated by SiriusXM, use of SiriusXM account and its services and features are subject to the SiriusXM Customer Agreement and Privacy Policy available at [siriusxm.com](https://www.siriusxm.com), and are not within Nissan's control. Should SiriusXM terminate, change, or restrict service or features, service or features may be suspended or terminated without notice or with no liability to Nissan or its partners or agents. Nissan and its partners or agents are also not responsible for associated costs or other third party changes that may be required for continued operation due to cellular network unavailability, restriction, or termination (including equipment replacements/upgrades, if available, or roaming charges on alternative networks). Trial period is subject to change or early termination at any time without notice. SiriusXM and related logos are trademarks of Sirius XM Radio Inc. and its respective subsidiaries. **SiriusXM and SiriusXM with 360L Trial Subscription:** Service will automatically stop at the end of your trial subscription period unless you decide to continue service. Trial is non-transferable. If you do not wish to enjoy your trial, you can cancel by calling the number below. All SiriusXM services require a subscription, each sold separately by SiriusXM after the trial period. **Service subject to the SiriusXM Customer Agreement and Privacy Policy, visit [siriusxm.com](https://www.siriusxm.com) for complete terms and how to cancel which includes online methods or calling 1-866-635-2349.** Some services and features are subject to device capabilities and location availability. Satellite service not available in AK & HI. Certain features and/or content may not be available in vehicles with SiriusXM with 360L unless an active data connection is enabled in the vehicle. Content varies by SiriusXM subscription package. All fees, content and features are subject to change. ³²Intelligent Rear View Mirror may not detect every object and does not eliminate blind spots or warn of moving objects. See Owner's Manual for safety information. ³³System may not engage if sensor is obstructed. System does not have the capability to identify individual passengers. Please see Owner's Manual for feature information. ³⁴Do not perform slide forward function with the Child Restraint System occupied. ³⁵Intelligent Dash Cam to be used only in accordance with any laws or rules in effect in your vehicle's location that may apply to audio or video recordings of drivers and passengers. Not every impact will trigger the vehicle's sensors and, as a result, may not activate some or all of the vehicle's cameras. ³⁶Information displayed is dependent on how vehicle is equipped. Do not use for extended periods of time. See Owner's Manual for important safety information. ³⁷Air bags are only a supplemental restraint system. Always wear your seat belt. Rear-facing child restraints should not be placed in the front passenger's seat. All children 12 and under should ride in the rear seat properly secured in child restraints, booster seats, or seat belts according to their size. Air bags will only inflate in certain accidents. See Owner's Manual for safety information. ³⁸For complete information concerning warranty coverage, conditions, limitations, and exclusions, see your Nissan dealer, [parts.nissanusa.com](https://www.parts.nissanusa.com) and read your vehicle's Warranty Information Booklet. ³⁹Vehicle shown is for illustrative purposes only. Not representative of brochure's model year/model. ⁴⁰Compatible smartphone and vehicle remote engine start system required. Virtual Key to be used only in accordance with laws or rules in effect in your vehicle's location. Actual maximum distance for operation will vary depending on obstructions between compatible device and vehicle. ⁴¹Dual Camera Drive Recorder to be used only in accordance with any laws or rules in effect in your vehicle's location that may apply to audio or video recordings of drivers and passengers. ⁴²Available feature. Lowering and raising action for Access mode can only be performed when vehicle is at a complete stop and parked. Please see Nissan Owner's Manual for full details and information before using. ⁴³Brake Assist cannot prevent all collisions and may not provide warning or braking in all conditions. Driver should monitor traffic conditions and brake as needed to prevent collisions. See Owner's Manual for safety information. ⁴⁴Intelligent Forward Collision Warning cannot prevent collisions. See Owner's Manual for safety information. ⁴⁵Traffic Sign Recognition may not detect and read all traffic signs in all conditions. Driver should monitor all traffic signs and obey all traffic laws. See Owner's Manual for details. ⁴⁶Never program while driving. GPS mapping may not be detailed in all areas or reflect current road status. ⁴⁷Payload capacity varies by configuration. See Nissan Towing Guide and Owner's Manual for additional information. Always secure cargo. ⁴⁸Nissan Branded Umbrella not yet available for purchase. Expected availability early 2025. ⁴⁹Must purchase/lease a new 2025 Nissan vehicle. EVs excluded. Other restrictions apply. Contact your local dealer for details. ⁵⁰Roadside assistance coverage period varies by model year and model. Includes Trip Interruption benefits. For complete information concerning warranty coverage, conditions and exclusions, see your Nissan dealer and read your vehicle's Warranty Information Booklet. ⁵¹Front Wide View cannot eliminate blind spots and does not warn of moving objects. Driver should always check surroundings before driving. See Owner's Manual for safety information. ⁵²2025 EPA Fuel Economy Estimates. 16 City MPG / 20 Highway MPG / 18 Combined MPG for Armada® 2WD. 16 City MPG / 19 Highway MPG / 17 Combined MPG for Armada® 4WD. 15 City MPG / 18 Highway MPG / 16 Combined MPG for Armada® PRO-4X®. Actual mileage may vary with driving conditions. Use for comparison only. Amazon, Alexa, Echo, and all related marks are trademarks of Amazon.com, Inc. or its affiliates. Apple CarPlay® is a registered trademark of Apple, Inc. DJX® is a registered trademark of Panasonic Corporation of North America. Google, Android Auto, Google Maps, YouTube Music, and other marks are trademarks of Google LLC. Compatible Android phone and compatible active data plan required. Wireless use of Android Auto requires a compatible Android 11.0+ phone and compatible active data plan. Check [g.co/androidauto/requirements](https://www.g.co/androidauto/requirements) for compatibility. Klipsch® is a registered trademark of Klipsch Group, Inc. myQ® is a registered trademark of The Chamberlain Group, Inc. SiriusXM is a registered trademark of Sirius XM Radio Inc. Yakima® is a registered trademark of Yakima Products, Inc. This brochure is intended for general descriptive and informational purposes only. It is subject to change and does not constitute an offer, representation or warranty (express or implied) by Nissan North America, Inc. Interested parties should confirm the accuracy of any information in this brochure as it relates to a vehicle directly with Nissan North America, Inc. before relying on it to make a purchase decision. Nissan North America, Inc. reserves the right to make changes, at any time, without prior notice, in prices, colors, materials, equipment, specifications, and models and to discontinue models or equipment. Due to continuous product development and other pre- and post-production factors, actual vehicle, materials and specifications may vary from this brochure. Some vehicles shown with optional equipment. See the actual vehicle for complete accuracy. Availability and delivery times for particular models or equipment may vary. Specifications, options and accessories may differ in Hawaii, U.S. territories and other countries. For additional information on availability, options or accessories, see your Nissan dealer or contact Nissan North America, Inc. At [NissanUSA.com](https://www.nissanusa.com), you'll find virtual product demonstrations, a way to "build your own Nissan," a dealer locator, and more information about key Nissan support services. Or if you'd prefer, call 1-800-NISSAN-3 for answers to specific questions about Armada® or any other Nissan vehicle. The Nissan names, logos, product names, feature names, and slogans are trademarks owned by or licensed to Nissan Motor Co. Ltd. and/or its North America subsidiaries. Other trademarks and trade names are those of their respective owners. **Always wear your seat belt, and please drive responsibly.** ©2024 Nissan North America, Inc. All rights reserved. ²⁵Armada®

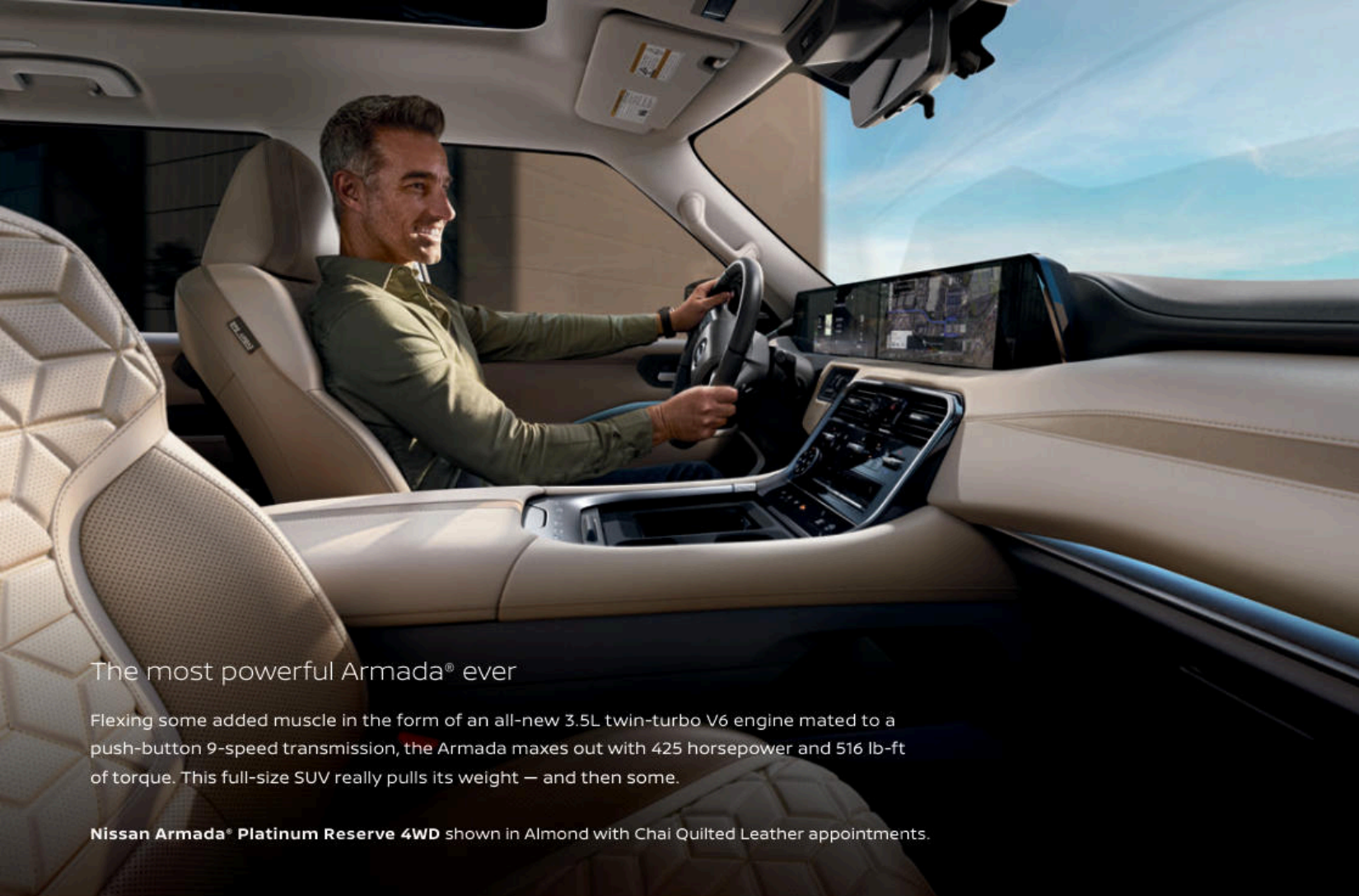
FOLLETO DISPONIBILE SOLO EN INGLÉS

Go forth and conquer

Built for those wanting to level up their adventures, the first-ever Armada® PRO-4X® is equipped with some of Nissan's most advanced off-road technology to date. Backed by our Intelligent 4WD with 2-speed transfer case^{1,2} and reinforced with exclusive features including an electronic locking rear differential,¹ all-terrain tires,¹ a high-clearance front fascia, underbody metal skid plate and more,¹ this trail-ready Armada was designed to help you reign wherever you roam.



Nissan Armada® PRO-4X® shown in Two-tone Alpine Metallic / Super Black³ with Black Roof Rail Crossbars,^{4,5} Affiliated: Yakima® LoadWarrior™ – Cargo Basket,⁶ and PRO-4X Front and Rear Mud Flaps.



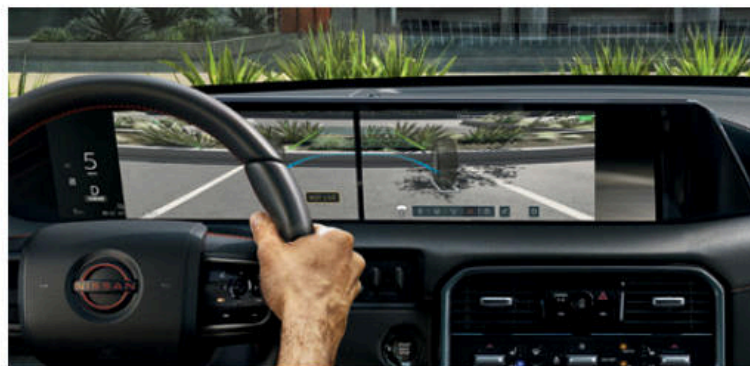
The most powerful Armada® ever

Flexing some added muscle in the form of an all-new 3.5L twin-turbo V6 engine mated to a push-button 9-speed transmission, the Armada maxes out with 425 horsepower and 516 lb-ft of torque. This full-size SUV really pulls its weight — and then some.

Nissan Armada® Platinum Reserve 4WD shown in Almond with Chai Quilted Leather appointments.

A fresh set of eyes

The advanced camera systems of the Armada work together to help provide you with an enhanced view of your surroundings. Its all-new Invisible Hood View provides a unique perspective of what's beneath you to help allow for more precise driving both on- and off-road and can be viewed more clearly across both of the large dual display screens when utilizing Ultra Wide View.^{1, 7, 8, 9, 51}



Take a load off driving

Adventures can sometimes be a grind. The Armada offers a wide range of driver-assist technologies to help make your travels less taxing, including ProPILOT Assist 2.1, which allows you to relax more on longer journeys with foot- and hands-off freeway driving.^{1, 10}



Tow smarter, not harder

The power-packed Armada makes hauling up to 8,500 pounds a breeze.¹¹ Equipped with an impressive list of advanced features including Tow Mode, 3D Enhanced Intelligent Around View® Monitor, Trailer Brake Controller, Trailer Sway Control, Trailer Blind Spot Warning, and more, this full-size SUV offers some serious brainpower to go with all that brawn.^{1, 12, 13, 14}

Nissan Armada® PRO-4X® shown in Super Black with optional equipment.

Expand everyone's comfort zone

When designing the Armada's interior cabin space, elevating everyone's experience was a top priority. With ample room for all and offering a list of luxurious features, including massaging front seats,¹ Tri-Zone Automatic Temperature Control, available second-row captain's chairs, and up to eight USB-C ports,¹⁵ it's enough to make anyone feel like the center of attention.



Klipsch

Immersed in sound

Inside the Armada, even your ears get pampered. Featuring an available Klipsch® Premium Audio System complete with DJX® Surround and 12 speakers strategically placed throughout the cabin, you and your passengers are treated to a home theater-quality sound experience like never before.

Nissan Armada® PRO-4X® shown in Charcoal Quilted Leather appointments with optional equipment and accessory Soft Sided Cargo Cooler.



Bigger bells. Better whistles.

From the moment you take command of the Armada, you're reminded that going bigger is always better. Decked out with dual widescreen 14.3-inch displays,^{1,7,9} Google built-in,^{1,7,16} customizable ambient interior lighting,¹ wireless charging,^{1,15} and a large panoramic moonroof, it helps you enjoy more of what the inside and outside world has to offer.

Nissan Armada® Platinum Reserve 4WD shown in Chestnut with Rye Quilted Leather appointments.

CHOOSE YOUR TRIM LEVEL

SV

- Available Intelligent 4WD with 2-speed transfer case²
- ProPILOT Assist 1.0¹⁸
- Safety Shield[®] 360¹⁹ — Automatic Emergency Braking with Pedestrian Detection,²⁰ Lane Departure Warning,²¹ Blind Spot Warning,¹⁴ Rear Cross Traffic Alert,²² Rear Automatic Braking,²³ High Beam Assist
- 18" Aluminum-alloy wheels
- Class IV tow hitch receiver with 7-pin wiring harness¹²
- Tri-Zone Automatic Temperature Control

- Remote Engine Start System with Intelligent Climate Control²⁴
- Approach unlock/walk away lock
- Second-row 40/20/40-split fold-down bench seat featuring LATCH AND GLIDE^{®34}
- 12.3" Digital dashboard with fully digital gauges⁹
- NissanConnect[®] 12.3" touch-screen display⁷
- Wireless Apple CarPlay[®] integration⁷
- Wireless Android Auto[™] compatibility⁷
- Six USB-C ports¹⁵



SL INCLUDES SV EQUIPMENT PLUS:

- Drive and Terrain Mode Selector with five modes
- Available Drive and Terrain Mode Selector with eight modes
- ProPILOT Assist 1.1¹⁸
- HD Enhanced Intelligent Around View[®] Monitor¹³
- Hill descent control
- 20" Machine-finished aluminum-alloy wheels
- 120-volt AC power outlet²⁵
- Heated front seats
- EZ FLEX[®] Seating System

- Third-row 60/40-split fold-down bench seat with power recline and one-touch folding²⁶
- NissanConnect[®] Services⁷
- In-vehicle data and Wi-Fi with 3-month or 3GB trial subscription^{7, 27}
- Firmware Over-The-Air Updates²⁸
- Google built-in^{7, 16}
- Alexa Built-in^{7, 29}
- Connected garage door opener with myQ^{®30}
- SiriusXM[®] with 360L with 3-month subscription included³¹
- Klipsch[®] Premium Audio System
- Wireless charger¹⁵



PLATINUM INCLUDES SL EQUIPMENT PLUS:

- 3D Enhanced Intelligent Around View Monitor¹³
- Intelligent Rear View Mirror³²
- LED fog lights
- Side mirrors with puddle lights
- Panoramic moonroof
- Motion Activated Liftgate
- Biometric Cooling³³
- Windshield wiper deicer
- Customizable multi-color ambient lighting
- 12-way power driver's seat, with 4-way power lumbar support
- 12-way power passenger's seat, with 4-way power lumbar support

- Climate-controlled front seats (heated and ventilated)
- Heated outboard second-row seats
- Second-row fold-down captain's chairs with armrests featuring LATCH AND GLIDE^{®34}
- Quilted leather-appointed seats (1st and 2nd rows)
- 14.3" Digital dashboard with fully digital gauges⁹
- NissanConnect[®] 14.3" touch-screen display⁷
- Intelligent Dash Cam³⁵
- Eight USB-C ports¹⁵



PRO-4X[®] INCLUDES SL EQUIPMENT PLUS:

- Intelligent 4WD with 2-speed transfer case²
- Electronic locking rear differential
- Drive and Terrain Mode Selector with eight modes
- Adaptive electronic air suspension⁴²
- 3D Enhanced Intelligent Around View Monitor¹³
- Intelligent Rear View Mirror³²
- Trailer brake controller¹²
- 20" Black-painted aluminum-alloy wheels
- 275/65R20 All-terrain tires
- LED fog lights
- Rear LED light bar

- Side mirrors with puddle lights
- Off-road front bumper with tow hooks and metal skid plate
- Black overfenders
- Black exterior accents
- PRO-4X embroidered quilted leather-appointed seats (1st and 2nd rows)
- Lava Red contrast interior stitching
- PRO-4X carpeted floor mats
- 14.3" Digital dashboard with fully digital gauges⁹
- NissanConnect[®] 14.3" touch-screen display⁷



PLATINUM RESERVE INCLUDES PLATINUM EQUIPMENT PLUS:

- Adaptive electronic air suspension⁴²
- 22" Machine-finished aluminum-alloy wheels
- Rear LED light bar
- Body-color running boards
- Trailer brake controller¹²

- Massaging front seats
- Premium leather-wrapped steering wheel
- Head-Up Display³⁶
- Driver seat-mounted front-center supplemental air bag³⁷



CHOOSE YOUR PACKAGE



CAPTAIN'S CHAIRS PACKAGE SL

- Second-row fold-down captain's chairs with armrests featuring LATCH AND GLIDE^{®34}
- Second-row center console with cup holders
- Two USB-C ports in center console¹⁵



SPLIT BENCH SEAT PACKAGE PLATINUM, PLATINUM RESERVE

- Second-row 40/20/40-split fold-down bench seat featuring LATCH AND GLIDE^{®34}
- Second-row armrest with cup holders
- Deletes two USB-C ports (six total)¹⁵



PROPILOT ASSIST 2.1 PACKAGE SL, PLATINUM, PLATINUM RESERVE

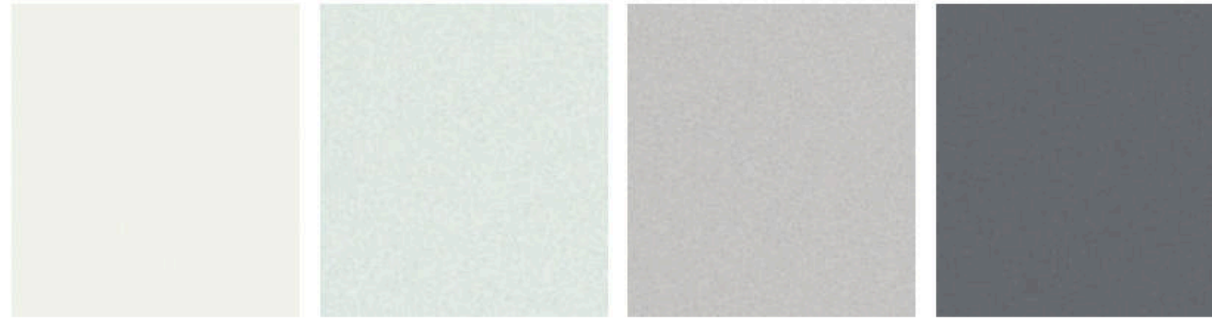
- ProPILOT Assist 2.1¹⁰
- NissanConnect[®] Services powered by SiriusXM[®] with trial access to 3-year ProPILOT Assist 2.1 package^{7, 10}
- Customizable multi-color ambient lighting (SL only)
- Head-Up Display (SL and Platinum only)³⁶
- 3D Enhanced Intelligent Around View Monitor (SL only)¹³



PREMIUM PACKAGE PRO-4X

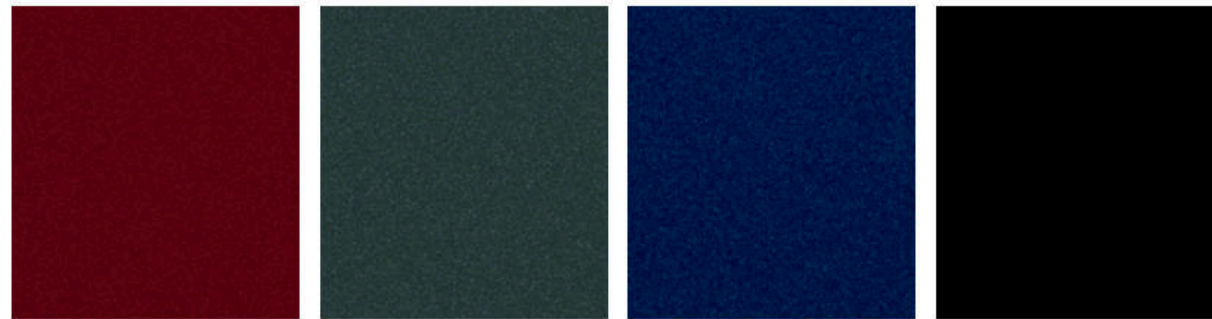
- Panoramic moonroof
- Motion Activated Liftgate
- Biometric Cooling³³
- 12-way power driver's and passenger's seats, with 4-way power lumbar support
- Climate-controlled front seats (heated and ventilated)
- Heated outboard second-row seats
- Intelligent Dash Cam³⁵

CHOOSE YOUR COLOR



Aspen White TriCoat³ Everest White Pearl TriCoat³ Brilliant Silver Metallic Gun Metallic

	SV	SL	PLT	PRO-4X	PLTR
Charcoal Leatherette	■				
Charcoal with Espresso TailorFit®		■			
Chestnut with Rye TailorFit®		■			
Charcoal Quilted Leather appointments				■	
Charcoal with Espresso Quilted Leather appointments			■ ¹⁷		■
Chestnut with Rye Quilted Leather appointments					■ ¹⁷
Almond with Chai Quilted Leather appointments			■ ¹⁷		■ ¹⁷

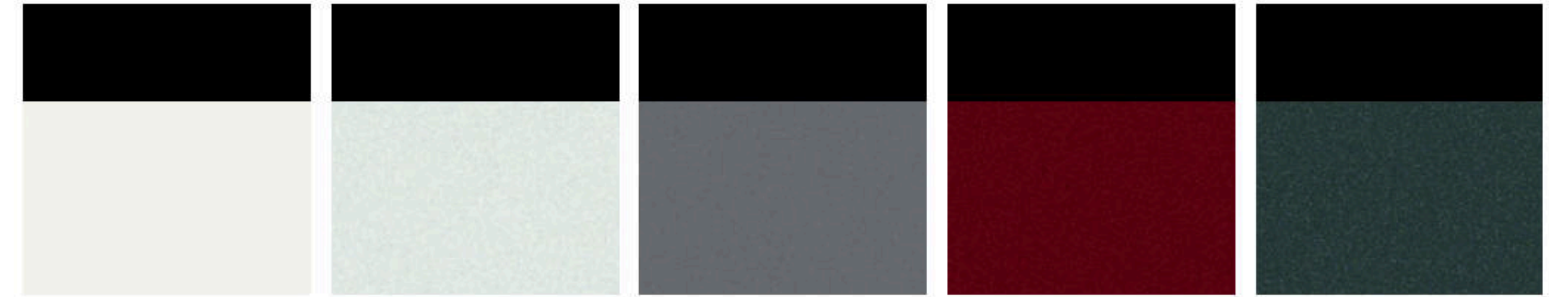


Coulis Red Pearl³ Alpine Metallic³ Deep Ocean Blue Pearl Super Black

	SV	SL	PLT	PRO-4X	PLTR
Charcoal Leatherette	■				
Charcoal with Espresso TailorFit®		■			
Chestnut with Rye TailorFit®		■			
Charcoal Quilted Leather appointments				■ ¹⁷	
Charcoal with Espresso Quilted Leather appointments			■ ¹⁷		■ ¹⁷
Chestnut with Rye Quilted Leather appointments					■ ¹⁷
Almond with Chai Quilted Leather appointments			■ ¹⁷		■ ¹⁷

■ Standard

Nissan has taken care to ensure that the digital color swatches presented here are the closest possible representation of actual vehicle colors. Swatches may vary slightly due to viewing light or screen quality. Please see the actual vehicle and colors at your dealer.



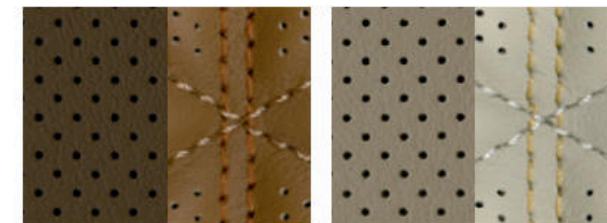
Two-tone Aspen White TriCoat / Super Black³ Two-tone Everest White Pearl TriCoat / Super Black³ Two-tone Gun Metallic / Super Black³ Two-tone Coulis Red Pearl / Super Black³ Two-tone Alpine Metallic / Super Black³

	SV	SL	PLT	PRO-4X	PLTR
Charcoal Leatherette	■				
Charcoal with Espresso TailorFit®		■			
Chestnut with Rye TailorFit®		■			
Charcoal Quilted Leather appointments				■	
Charcoal with Espresso Quilted Leather appointments			■ ¹⁷		■ ¹⁷
Chestnut with Rye Quilted Leather appointments					■ ¹⁷
Almond with Chai Quilted Leather appointments			■ ¹⁷		■ ¹⁷

CHOOSE YOUR INTERIOR



Charcoal Leatherette SV Charcoal with Espresso TailorFit® SL Chestnut with Rye TailorFit® SL Charcoal Quilted Leather appointments PRO-4X® Charcoal with Espresso Quilted Leather appointments Platinum | Platinum Reserve



Chestnut with Rye Quilted Leather appointments Platinum Reserve Almond with Chai Quilted Leather appointments Platinum | Platinum Reserve

NISSAN ARMADA® ACCESSORIES

The ultimate personal statement

Every Genuine Nissan Accessory is custom-fit, custom-designed, and durability-tested. Each one is also backed by Nissan's 3-year/36,000-mile (whichever occurs first) limited warranty (if installed by the dealer at the time of new vehicle purchase) and can be financed when installed by the dealer at time of new vehicle purchase.³⁸ Affiliated Yakima® accessories are not warranted by Nissan. Refer to product manufacturer for warranty details. Nissan Limited Warranty does not cover damages or failures to the vehicle caused by improper installation or alterations of any Nissan-affiliated accessory or component. Contact your dealer/retailer for details.⁹



For more information and to shop online for Armada Genuine Nissan Accessories, scan the code.



Nissan Armada® PRO-4X® shown in Two-tone Alpine Metallic / Super Black³ with 18" NISMO® Off Road Bronze Axis Wheels, PRO-4X Mud Flaps, Matte Chrome Rear Bumper Protector, Hitch Ball Mount, Class III,¹² Hitch Ball, Class III,¹² Black Roof Rail Crossbars,^{4,5} and Affiliated: Yakima® SkyBox 16 — Roof Cargo Box.^{4,4}

CHOOSE YOUR ACCESSORIES

- A. Cargo Shelf/Barrier**
Keep items within easy reach and your cargo area looking nice and tidy.
- B. Illuminated Cargo Scuff Plates**
A bright idea that helps protect your liftgate from scuffs and scratches.
- C. Panoramic Illuminated Headliner**
Frame the panoramic moonroof and set the mood with hidden white LEDs.
- D. Nissan Branded Umbrella (late availability) & Umbrella Holder (sold separately)⁴⁸**
Stay ready and dry when rainy days try to surprise you.
- E. Tablet Holder³⁹**
Let your passengers enjoy their entertainment hands-free.
- F. Virtual Key⁴⁰**
Lock, unlock, and share your Armada with others — all without a key.
- G. Pet Ramp, Pet Carrier & Dog Harness (sold separately)³⁹**
Transport your furry friends securely and comfortably.
- H. All-Season Floor Mats — High Wall Liners**
Protect the interior from rain, snow, dirt, and mud.

Additional Accessories:

- Dual Camera Drive Recorder⁴¹
- Illuminated Kick Plates
- Carpeted Floor Mats (5-piece set)
- PRO-4X® Carpeted Floor Mats (5-piece set)
- Reversible Carpeted Cargo Area Protector
- PRO-4X Reversible Carpeted Cargo Area Protector
- Cargo Net
- Removable Tote Cargo Organizer
- Cargo Blocks/Stabilizers
- Silver Roof Rail Crossbars⁵
- Hatch Tent (10' x 10')
- Emergency Road Kit
- Off Road Adventure Kit
- Adventure Medic Kit
- Seatback Organizer
- Console Net
- Interior Door Scuff Protection
- NISMO Off Road 18" Black Axis Wheels
- And More



SPECIFICATIONS

Engine	SV	SL	PLT	PRO-4X	PLT R
3.5-liter DOHC 24-valve twin-turbo V6 engine Horsepower — 425 hp @ 5,600 rpm Torque — 516 lb-ft of torque @ 3,600 rpm	■	■	■	■	■
Continuously Variable Valve Timing Control System (CVTCS)	■	■	■	■	■
Direct Injection Gasoline (DIG)	■	■	■	■	■

Drivetrain	SV	SL	PLT	PRO-4X	PLT R
Rear-wheel drive	■	■	■	■	■
Intelligent 4WD with 2-speed transfer case ²	□	□	□	■	□
Electronic locking rear differential				■	
9-speed automatic transmission	■	■	■	■	■
Paddle shifters	■	■	■	■	■
Drive and Terrain Mode Selector with five modes	■	■	■	■	■
Drive and Terrain Mode Selector with eight modes	□	□	□	■	□

Brakes	SV	SL	PLT	PRO-4X	PLT R
Front and rear vented disc brakes	■	■	■	■	■
Anti-lock Braking System (ABS)	■	■	■	■	■
Electronic Brake force Distribution (EBD)	■	■	■	■	■
Brake Assist ⁴³	■	■	■	■	■
Electronic parking brake	■	■	■	■	■

Suspension/Chassis Bracing/Steering	SV	SL	PLT	PRO-4X	PLT R
Independent double-wishbone front and rear suspension	■	■	■	■	■
Adaptive electronic air suspension ⁴²				■	■
Front and rear stabilizer bars	■	■	■	■	■
Vehicle-speed-sensitive electric power steering	■	■	■	■	■

Driver Assistance Technologies	SV	SL	PLT	PRO-4X	PLT R
ProPILOT Assist 1.0 ¹⁸	■				
ProPILOT Assist 1.1 ¹⁸		PP	PP		PP
ProPILOT Assist 2.1 ¹⁰		PP	PP		PP
Intelligent Forward Collision Warning ⁴⁴	■	■	■	■	■
Automatic Emergency Braking with Pedestrian Detection ²⁰	■	■	■	■	■
Lane Departure Warning ²¹	■	■	■	■	■
Intelligent Lane Intervention ²¹	■	■	■	■	■
Blind Spot Warning ¹⁴	■	■	■	■	■
Intelligent Blind Spot Intervention ¹⁴	■	■	■	■	■
Rear Cross Traffic Alert ²²	■	■	■	■	■
Rear Automatic Braking ²³	■	■	■	■	■
HD Enhanced Intelligent Around View [®] Monitor ¹³		■	■	■	■
3D Enhanced Intelligent Around View Monitor ¹³		PP	■	■	■
Intelligent Rear View Mirror ⁵²			■	■	■
Hill descent control		□	□	■	□
Trailer brake controller ¹²		□	□	■	□
High Beam Assist	■	■	■	■	■
Traffic Sign Recognition ⁴⁵	■	■	■	■	■

Wheels/Tires	SV	SL	PLT	PRO-4X	PLT R
18" Aluminum-alloy wheels	■				
20" Machine-finished aluminum-alloy wheels		■	■		

Wheels/Tires (continued)	SV	SL	PLT	PRO-4X	PLT R
20" Black-painted aluminum-alloy wheels				■	
22" Machine-finished aluminum-alloy wheels					■
265/60R18 All-season tires	■				
275/60R20 All-season tires		■	■		
275/60R20 All-terrain tires				■	
275/50R22 All-season tires					■

Chassis	SV	SL	PLT	PRO-4X	PLT R
Body-on-frame construction	■	■	■	■	■
Full-length, fully boxed ladder frame	■	■	■	■	■

Exterior Features	SV	SL	PLT	PRO-4X	PLT R
LED headlights with signature LED Daytime Running Lights	■	■		■	■
LED fog lights			■	■	■
Rear LED light bar				■	■
Off-road front bumper with tow hooks and metal skid plate				■	
Power tilt and fold, heated, auto-dimming outside mirrors with integrated turn signals		■	■	■	■
Side mirrors with puddle lights				P	■
Panoramic moonroof				■	■
Power liftgate		■		■	■
Motion Activated Liftgate			■	P	■
Black overfenders				■	
Body-color running boards					■
Black exterior accents				■	
Class IV tow hitch receiver with 7-pin wiring harness ¹²	■	■	■	■	■

Comfort/Convenience	SV	SL	PLT	PRO-4X	PLT R
Tri-Zone Automatic Temperature Control	■	■	■	■	■
Biometric Cooling ³³			■	P	■
Remote Engine Start System with Intelligent Climate Control ²⁴	■	■	■	■	■
Approach unlock/walk away lock	■	■	■	■	■
Rain-sensing windshield wipers	■	■	■	■	■
Windshield wiper deicer			■	■	■
120-volt AC power outlet ²⁵			■	■	■
Customizable multi-color ambient lighting		PP	■	■	■

Seating/Appointments	SV	SL	PLT	PRO-4X	PLT R
10-way power driver's seat, with 2-way power lumbar support		■		■	
12-way power driver's seat, with 4-way power lumbar support			■	P	■
6-way power passenger's seat, with 2-way power lumbar support		■		■	
12-way power passenger's seat, with 4-way power lumbar support			■	P	■
Heated front seats		■		■	
Climate-controlled front seats (heated and ventilated)			■	P	■
Heated outboard second-row seats			■	P	■
Massaging front seats					■
Driver's seat, steering wheel, and outside mirrors position memory	■	■	■	■	■

Seating/Appointments (continued)	SV	SL	PLT	PRO-4X	PLT R
Second-row 40/20/40-split fold-down bench seat featuring LATCH AND GLIDE ³⁴	■	■	S	■	S
Second-row fold-down captain's chairs with armrests featuring LATCH AND GLIDE ³⁴		C	■		■
EZ FLEX [®] Seating System		■	■	■	■
Second-row armrest with cup holders	■	■	S	■	S
Second-row center console with cup holders		C	■		■
Third-row 60/40-split fold-down bench seat with power recline and one-touch folding ²⁶		■	■	■	■
TailorFit [®] seats		■			
PRO-4X [®] embroidered quilted leather-appointed seats (1st and 2nd rows)				■	
Quilted leather-appointed seats (1st and 2nd rows)			■		■
Heated steering wheel		■		■	■
Premium leather-wrapped steering wheel					■
Wood-tone trim	■				
Birdseye Maple wood-tone trim		■	■	■	■
PRO-4X carpeted floor mats				■	

Infotainment	SV	SL	PLT	PRO-4X	PLT R
12.3" Digital dashboard with fully digital gauges ⁹	■	■			
14.3" Digital dashboard with fully digital gauges ⁹					■
Head-Up Display ³⁶		PP	PP		
NissanConnect [®] 12.3" touch-screen display ⁷	■	■			
NissanConnect [®] 14.3" touch-screen display ⁷			■	■	■
NissanConnect [®] Services powered by SiriusXM [®] with trial access to 5-year Select and 3-year Premium packages ⁷		■	■	■	■
NissanConnect [®] Services powered by SiriusXM [®] with trial access to 3-year ProPILOT Assist 2.1 package ^{7,10}		PP	PP		PP
In-vehicle data and Wi-Fi with 3-month or 3GB trial subscription ^{7,27}		■	■	■	■
Firmware Over-The-Air Updates ²⁸		■	■	■	■
Google built-in ^{7,16}		■	■	■	■
Nissan Door to Door Navigation ⁴⁶		■	■	■	■
Wireless Apple CarPlay [®] integration ⁷	■	■	■	■	■
Wireless Android Auto [™] compatibility ⁷	■	■	■	■	■
Alexa Built-in ^{7,29}		■	■	■	■
Intelligent Dash Cam ³⁵		■	■	P	■
Connected garage door opener with myQ ^{®30}		■	■	■	■
SiriusXM [®] with 360L with 3-month subscription included ³¹		■	■	■	■
Klipsch [®] Premium Audio System with 12 speakers		■	■	■	■
Six USB-C ports ¹⁵	■		S	■	S
Eight USB-C ports ¹⁵		C	■	■	■
Wireless charger ¹⁵		■	■	■	■

Safety	SV	SL	PLT	PRO-4X	PLT R
Nissan Advanced Air Bag System with dual-stage supplemental front air bags with seat-belt and occupant-classification sensors ³⁷	■	■	■	■	■
Driver and front-passenger seat-mounted side-impact supplemental air bags ³⁷	■	■	■	■	■
Driver seat-mounted front-center supplemental air bag ³⁷					■

Safety (continued)	SV	SL	PLT	PRO-4X	PLT R
Driver and front-passenger supplemental knee air bags ³⁷	■	■	■	■	■
Roof-mounted curtain side-impact supplemental air bags with rollover sensor for outboard occupant head protection ³⁷	■	■	■	■	■
LATCH System (Lower Anchors and Tethers for Children)	■	■	■	■	■

DIMENSIONS/CAPACITIES

Exterior Dimensions — Inches					
	SV	SL	PLT	PRO-4X	PLT R
Wheelbase	121.1	121.1	121.1	121.1	121.1
Overall length	209.6	209.6	209.6	209.6	209.6
Overall width	92.5	92.5	92.5	92.5	92.5
Overall height	76.5	76.9	76.9	76.5	77.9
Track width front	68.0	68.0	68.0	68.1	68.1
Track width rear	67.9	67.9	67.9	68.0	68.0

Vehicle Clearance					
	SV	SL	PLT	PRO-4X	PLT R
Minimum ground clearance (inches)	9.6	9.9	9.9	9.6	9.6
Angle of approach (degrees)	23	23.5	23.5	33	26
Angle of departure (degrees)	22	22.5	22.5	25.5	25.5
Breakover angle (degrees)	22.5	23	23	24.5	24.5

Capacities					
Seating capacity with 2nd-row bench seat					8
Seating capacity with 2nd-row captain's chairs					7
Fuel tank (gals.)					23.6
Maximum towing capacity (lbs.) ¹¹					8,500
Tongue weight capacity (lbs.) ¹²					850

2025 EPA Fuel Economy Estimates ³²					
	SV	SL	PLT	PRO-4X	PLT R
City/Hwy/Combined mpg (2WD)	16/20/18	16/20/18	16/20/18		16/20/18
City/Hwy/Combined mpg (4WD)	16/19/17	16/19/17	16/19/17	15/18/16	16/19/17

NISSAN MAINTENANCE CARE

Make ownership even more convenient with up to 3 scheduled oil changes included within 2 years/24,000 miles (whichever occurs first) on a new 2025 Armada.⁴⁹

NISSAN ROADSIDE ASSISTANCE

Your peace of mind is on us. For 36 months or 36,000 miles, whichever comes first, your new Nissan is covered for the following:⁵⁰

- Flat-tire changes
- Trip Interruption benefits
- Jump starts
- Vehicle lockouts
- Emergency fuel delivery

visit [NissanUSA.com/armada](https://www.nissanusa.com/armada)

PRINTED IN USA

■ Standard □ Optional C Part of SL Captain's Chairs Package S Part of Split Bench Seat Package (Platinum, Platinum Reserve) PP Part of ProPILOT Assist 2.1 Package (SL, Platinum, Platinum Reserve) P Part of PRO-4X[®] Premium Package



Sign up to get the latest on
Nissan vehicles, news, and events.

<https://www.nissanusa.com/brochures/request-brochure.html>