

NISSAN INTELLIGENT MOBILITY™

Nissan Intelligent Mobility guides everything we do. We're using new technologies to transform cars from mere driving machines into assistants. Together the journey is more confident, connected, and exciting. Whether it's cars that assist in the driving task, or highways that charge your EV as you go along, it's all in the very near future. And it's a future already taking shape in the Nissan you drive today.

SEE FRONTIER® COME TO LIFE

Go to NissanUSA.com and find an interactive brochure for Frontier® and every Nissan in the lineup. Available on desktop or smartphone, it's the full product story – including demos, videos, and complete info on trims, colors, and accessories.

Or download the Interactive Brochure Hub app on your tablet.
Free on the App Store® and Google Play.™



Innovation
that excites

2018
FRONTIER®



NISSAN ROADSIDE ASSISTANCE

Your peace of mind is on us. For 36 months or 36,000 miles, whichever comes first, your new Nissan is covered for the following:†

- Flat-tire changes
- Trip Interruption benefits
- Jump starts
- Vehicle lockouts
- Emergency fuel delivery

Follow Nissan on:



visit NissanUSA.com/frontier

†Available services/features may be shown. Compatible connected device may be required. Only use services/features and device when safe and legal to do so. Subject to GPS and wireless network availability and connection, and system/technology limitations. Text rates/data usage/subscription may apply. Some services/features provided by companies not within Nissan or its partners' or agents' control and may be discontinued at any time. For more information, see dealer, Owner's Manual, or NissanUSA.com/connect/important-information. The App Store® logo is a registered trademark of Apple, Inc. All rights reserved. Facebook® is a registered trademark of Facebook, Inc. Google Play™ is a trademark of Google, Inc. Twitter® is a registered trademark of Twitter, Inc. YouTube® is a registered trademark of Google Inc.

TAKE ON THE PATH LESS TRAVELED. On-road or off.
Power through most every job, big or small. Stop.
Back it up. Take a look at what's directly behind you,
hitch up your weekend toys, and go! The 2018 Nissan
Frontier.[®] **TAKE ON TODAY.**



Nissan Frontier[®] PRO-4X[®] King Cab[®] shown in Lava Red with accessory Body Side Moldings.

Towing capability varies by configuration. See Nissan Towing Guide and Owner's Manual for additional information.



SURROUND YOURSELF WITH THE BEST

Whether you're on the job or on the go, Frontier® offers features that take things up a notch. Embrace a great-looking interior plus an available sporty, leather-wrapped steering wheel with cruise control and audio adjustments. Crank up the available Rockford Fosgate®-powered audio system, which features ten speakers, including subwoofers.¹ Make and take calls with your hands on the wheel using the Bluetooth® Hands-free Phone System.² And get things the way you like it with available Dual Zone Automatic Temperature Control.

¹Crew Cab only. ²Available services/features may be shown. Compatible connected device may be required. Only use services/features and device when safe and legal to do so. Subject to GPS and wireless network availability and connection, and system/technology limitations. Text rates/data usage/subscription may apply. Some services/features provided by companies not within Nissan or its partners' or agents' control and may be discontinued at any time. For more information, see dealer, Owner's Manual, or NissanUSA.com/connect/important-information. Bluetooth® word mark and logos are owned by Bluetooth SIG, Inc., and any use of such marks by Nissan is under license. Rockford Fosgate® is a registered trademark of Rockford Corporation. The Sirius®, XM®, and SiriusXM® names and all related marks and logos are trademarks of Sirius XM Radio Inc.

Nissan Frontier® PRO-4X® Crew Cab shown in Graphite Leather with optional equipment.

4X4 CAPABILITY

With the available 4x4 system, you can choose between 2WD, 4H, and 4LO, to help maximize fuel efficiency on the highway and get serious off-road capability on command. Four-wheel Active Brake Limited Slip (ABLS), and available hill start assist and hill descent control help you conquer even the roughest terrain.



PRO-4X

- Bilstein® shocks
- All-terrain tires
- Body-color rear bumper and satin chrome grille
- 16" 6-spoke aluminum-alloy wheels



SHAKE UP SOME SAND

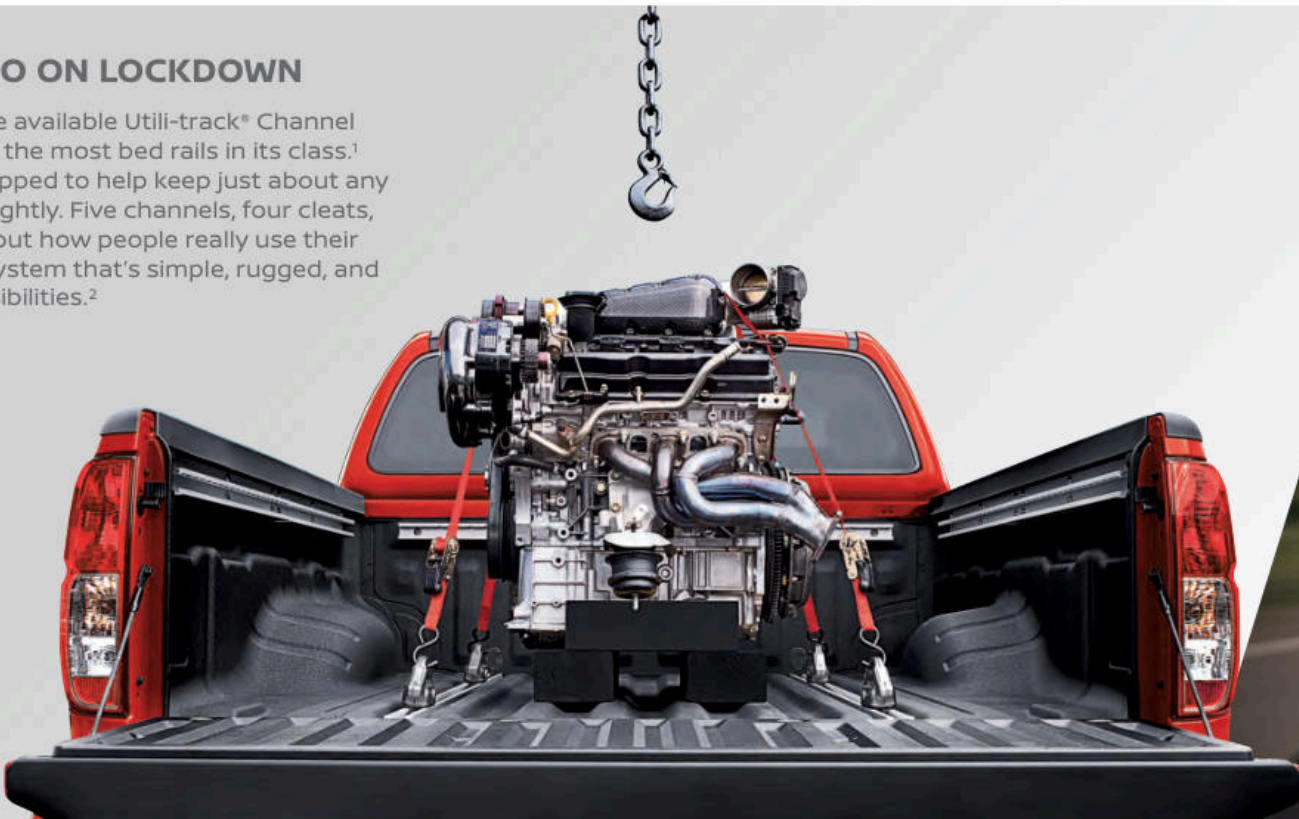
The Desert Runner serves up major attitude with 16" 6-spoke aluminum-alloy wheels, a satin chrome grille, and details like fog lights and a body-color rear bumper. Bilstein® off-road performance shocks and 265/75R16 mud- and snow-rated all-terrain tires help maximize your potential. And a unique bedside decal tops it off – just before you leave them in the dust.

DESERT RUNNER



PUT YOUR CARGO ON LOCKDOWN

When equipped with the available Utili-track® Channel System, Frontier® offers the most bed rails in its class.¹ This system is fully equipped to help keep just about any type of cargo secured tightly. Five channels, four cleats, and a lot of thought about how people really use their trucks have created a system that's simple, rugged, and offers near-infinite possibilities.²



¹Available feature. *Ward's Small Pickup Segmentation*, 2018 Frontier® SV with Value Truck Package and above vs. latest in-market competitors. ²Cargo shown for display purposes only. Cargo and load capacity limited by weight and distribution. Always secure all cargo. Heavy loading of the vehicle with cargo, especially on the roof, will affect the handling and stability of the vehicle. ³Frontier® SV V6 King Cab® 4x2 shown. Towing capability varies by configuration. See Nissan Towing Guide and Owner's Manual for additional information. Bilstein® is a registered trademark of ThyssenKrupp Bilstein GmbH.

261
HORSEPOWER

281
LB-FT OF TORQUE

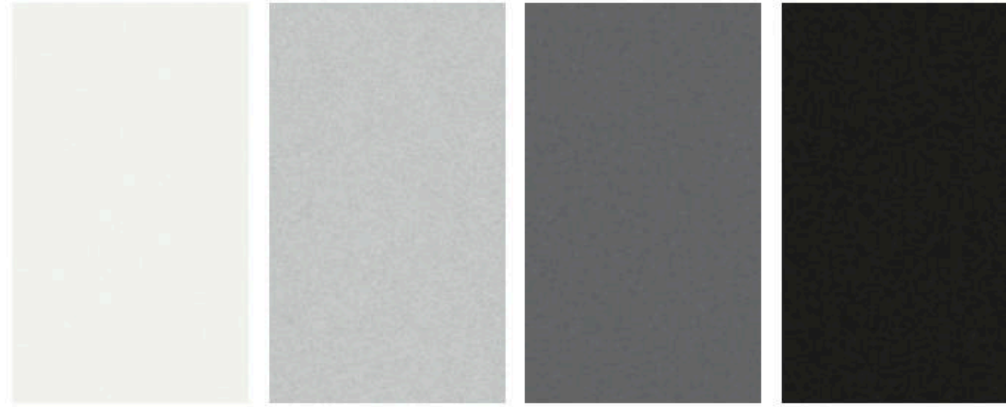
UP TO **6,710**
LBS. MAX TOWING³

BRING THE BIG TOYS

Power – either you've got it, or you don't. And with Frontier, you've got it in a big way. With an available 4.0-liter V6 engine packing 261 horsepower, your V6 is chomping at the bit. And with a massive 281 lb-ft of torque, you can tow or haul just about anything you need to bring along.³ There's even an available Flexible Fuel Vehicle feature that allows you to choose ethanol E85, standard gasoline or any mixture of the two fuels.



CHOOSE YOUR COLOR



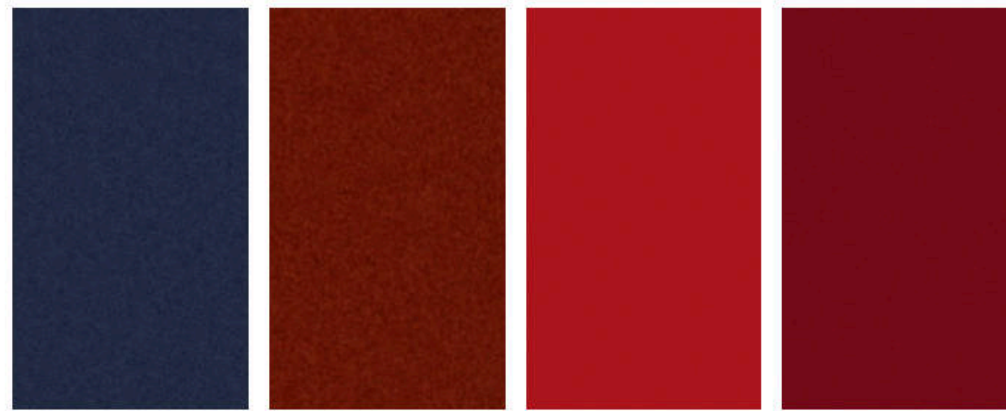
Glacier White QAK

Brilliant Silver K23

Gun Metallic KAD

Magnetic Black G41

	S	SV	DR	PRO	SL
STEEL CLOTH	■	■			
STEEL LEATHER					■
BEIGE CLOTH		■			
BEIGE LEATHER					■
GRAPHITE CLOTH		■ ²			
GRAPHITE STEEL CLOTH			■	■	
GRAPHITE LEATHER					■ ^L



Arctic Blue Metallic RBG

Forged Copper CAU³

Lava Red EAF

Cayenne Red NAH³

	S	SV	DR	PRO	SL
STEEL CLOTH		■			
STEEL LEATHER					■
BEIGE CLOTH					
BEIGE LEATHER					■
GRAPHITE CLOTH		■ ²			
GRAPHITE STEEL CLOTH			■	■	
GRAPHITE LEATHER					■ ^L

■ Standard
 L Part of PRO-4X⁴ Luxury Package

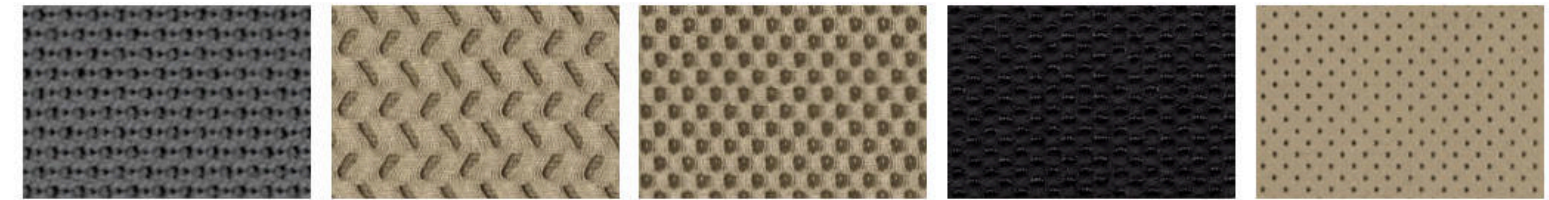
¹Crew Cab only.
²King Cab only.
³Limited availability.

Nissan has taken care to ensure that the color swatches presented here are the closest possible representations of actual vehicle colors. Swatches may vary slightly due to the printing process and whether viewed in daylight, fluorescent or incandescent light. Please see the actual colors at your local Nissan dealer.

CHOOSE YOUR INTERIOR



Nissan Frontier[®] SL Crew Cab shown in Steel Leather.



Steel Cloth
S King Cab[®]

Beige Cloth
SV King Cab

Beige Cloth
SV Crew Cab

Graphite Steel Cloth
Desert Runner[®] | PRO-4X[®]

Beige Leather
SL Crew Cab



Graphite Cloth
S King Cab

Graphite Cloth
SV King Cab

Steel Cloth
S | SV Crew Cab

Graphite Leather
PRO-4X Crew Cab

Steel Leather
SL Crew Cab

CHOOSE YOUR TRIM LEVEL

S KING CAB CREW CAB

2.5-liter 4-cylinder engine with 152 hp and 171 lb-ft of torque, 5-speed manual transmission, available 5-speed automatic transmission, 15" 6-spoke steel wheels, Active Brake Limited Slip (ABLS), full-length and fully boxed ladder frame, 5.0" color display, AM/FM/CD audio system with four speakers, USB port,¹ Bluetooth® Hands-free Phone System,² Hands-free Text Messaging Assistant,³ streaming audio via Bluetooth® wireless technology,² Siri® Eyes Free,² RearView Monitor,⁴ Illuminated steering wheel-mounted audio and cruise controls, power door locks and windows, rear access doors, second-row under-seat storage, Vehicle Dynamic Control (VDC),⁵ Tire Pressure Monitoring System (TPMS)⁶

Crew Cab adds: 4.0-liter V6 engine with 261 hp and 281 lb-ft of torque, 6-speed manual transmission,⁷ available 5-speed automatic transmission, four full-size doors with seating for five, 16" 6-spoke steel wheels, AM/FM/CD audio system with six speakers

KEY AVAILABLE PACKAGE:

Work Truck Package



SV 4-CYL. / V6 KING CAB CREW CAB CREW CAB LONG BED

SV 4-cylinder includes S equipment plus: 16" 6-split spoke aluminum-alloy wheels, body-color front bumper, chrome rear bumper, SiriusXM® Satellite Radio with 3-month complimentary trial access,² remote keyless entry, tilt steering column, power door locks and windows, sliding rear window, sun visors with vanity mirrors and extension

SV V6 includes SV 4-cyl. equipment plus: 4.0-liter V6 engine with 261 hp and 281 lb-ft of torque, 5-speed automatic transmission, bed rail caps

Crew Cab adds: 4.0-liter V6 engine with 261 hp and 281 lb-ft of torque, 6-speed manual transmission,⁸ available 5-speed automatic transmission,⁹ four full-size doors with seating for five, AM/FM/CD audio system with six speakers

KEY AVAILABLE PACKAGES:

Value Truck Package (V6 with automatic transmission only),¹⁰ Moonroof Package (Crew Cab only)



DESERT RUNNER® KING CAB CREW CAB

Includes SV V6 equipment plus: Bilstein® off-road performance shocks, 16" 6-spoke aluminum-alloy wheels with all-terrain tires, fog lights, satin chrome grille, body-color rear bumper, 8-way manual driver's seat, white-faced gauges, Frontier embroidered cloth seat trim

Crew Cab adds: Four full-size doors with seating for five, AM/FM/CD audio system with six speakers



PRO-4X® KING CAB CREW CAB

Includes SV V6 equipment plus: Bilstein® off-road performance shocks, electronic locking rear differential, skid plates, 16" 6-spoke aluminum-alloy wheels with all-terrain tires, automatic on/off headlights and fog lights, Utili-track® Channel System, factory-applied spray-on bedliner, satin chrome grille, body-color rear bumper and outside mirrors, PRO-4X bedside decal, 5.8" color touch-screen display, Nissan Navigation System,¹¹ NissanConnect® Mobile Apps,² Nissan Voice Recognition for navigation and audio,¹¹ SiriusXM® Traffic and Travel Link with 3-month complimentary trial access,² Rear Sonar System,¹² Dual Zone Automatic Temperature Control, PRO-4X embroidered cloth seat trim, 8-way manual driver's seat, heated front seats, white-faced gauges, leather-wrapped steering wheel

Crew Cab adds: 6-speed manual transmission, available 5-speed automatic transmission, clutch start/cancel (manual transmission only), four full-size doors with seating for five, Rockford Fosgate®-powered audio system with ten speakers

KEY AVAILABLE PACKAGE:

Premium Package (Crew Cab with automatic transmission only)



SL CREW CAB

Includes SV V6 equipment plus: 18" 6-split spoke aluminum-alloy wheels, automatic on/off headlights and fog lights, Utili-track® Channel System, factory-applied spray-on bedliner, chrome front bumper, outside mirrors and door handles, heated outside mirrors, power sliding glass moonroof with tilt feature, body-color side moldings, step rails, 5.8" color touch-screen display, Nissan Navigation System,¹¹ NissanConnect® Mobile Apps,² Nissan Voice Recognition for navigation and audio,¹¹ SiriusXM® Traffic and Travel Link with 3-month complimentary trial access,² Rockford Fosgate®-powered audio system with ten speakers, Rear Sonar System,¹² Dual Zone Automatic Temperature Control, HomeLink® Universal Transceiver, leather-appointed seats, 8-way power adjustable driver's seat, 4-way power adjustable front-passenger's seat, heated front seats, leather-wrapped steering wheel and shift knob



¹Driving is serious business and requires your full attention. If you have to use the connected device while driving, exercise extreme caution at all times so full attention may be given to vehicle operation. External device not included. ²Available services/features may be shown. Compatible connected device may be required. Only use services/features and device when safe and legal to do so. Subject to GPS and wireless network availability and connection, and system/technology limitations. Text rates/data usage/subscription may apply. Some services/features provided by companies not within Nissan or its partners' or agents' control and may be discontinued at any time. For more information, see dealer, Owner's Manual, or NissanUSA.com/connect/important-information. ³Use the Text Messaging feature after stopping your vehicle in a safe location. If you have to use the feature while driving, exercise extreme caution at all times so full attention may be given to vehicle operation. Compatible smartphone required. Text rates and/or data usage may apply. ⁴Parking aid/convenience feature. Cannot completely eliminate blind spots. May not detect every object and does not warn of moving objects. Always check surroundings and turn to look behind you before moving vehicle. ⁵VDC, which should remain on when driving except when freeing the vehicle from mud or snow, cannot prevent accidents due to abrupt steering, carelessness, or dangerous driving techniques. ⁶TPMS is not a substitute for regular tire pressure checks. ⁷4x2 only. ⁸4x4 only. Not available on Crew Cab Long Bed. ⁹Standard on 4x2 models and Crew Cab Long Bed. ¹⁰Features in this package are standard on SV V6 with manual transmission. ¹¹Never program while driving. GPS mapping may not be detailed in all areas or reflect current road status. ¹²The optional Rear Sonar System is a convenience, but is not a substitute for proper backing procedures. Always turn and check that it is safe to do so before backing up. May not detect every object behind you. Bilstein® is a registered trademark of ThyssenKrupp Bilstein GmbH. Bluetooth® word mark and logos are owned by Bluetooth SIG, Inc., and any use of such marks by Nissan is under license. HomeLink® is a registered trademark of Gentex Corporation. Rockford Fosgate® is a registered trademark of Rockford Corporation. Siri® and Siri® Eyes Free are registered trademarks of Apple, Inc. The Sirius®, XM®, and SiriusXM® names and all related marks and logos are trademarks of Sirius XM Radio Inc.

CHOOSE YOUR PACKAGE



WORK TRUCK PACKAGE¹ | S

Available on S with automatic transmission only

- Factory-applied spray-on bedliner
- Bed rail caps

- Splash guards (standard on 4x4)
- All-season floor mats



MOONROOF PACKAGE | SV

Available on SV Crew Cab Standard Bed with automatic transmission only

- Power sliding glass moonroof with tilt feature



VALUE TRUCK PACKAGE | SV

Available on SV V6 King Cab and SV Crew Cab with automatic transmission and SV Crew Cab Long Bed 4x4 only

- Rear Sonar System²
- Dual Zone Automatic Temperature Control
- Six speakers (King Cab[®] only)
- Auto-dimming rearview mirror, digital compass, and outside temperature display
- Factory-applied spray-on bedliner

- Utili-track[®] Channel System with 4 tie-down cleats³
- Fog lights
- Vehicle Security System
- Heated front seats
- Sliding bed extender
- Tow hitch receiver, Class IV⁴
- Leather-wrapped steering wheel and shift knob



PREMIUM PACKAGE | PRO-4X[®]

Available on PRO-4X Crew Cab with automatic transmission only

- PRO-4X embroidered leather-appointed seats
- White contrast interior stitching
- 8-way power adjustable driver's seat
- 4-way power adjustable front-passenger's seat

- Heated outside mirrors
- Rear fold-down center armrest
- Power sliding glass moonroof
- Roof rack with crossbars³

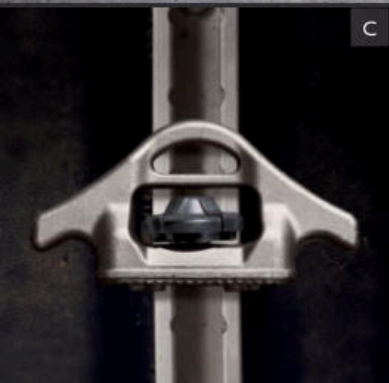
CHOOSE YOUR ACCESSORIES



A



B



C



D



E



F



G



H

STEP UP YOUR GAME

Every Genuine Nissan Accessory is custom-fit, custom-designed and durability-tested. Each one is also backed by Nissan's 3-year/36,000-mile (whichever occurs first) limited warranty (if installed by dealer at the time of purchase)! Ask your dealer whether a specific Genuine Nissan Accessory may be financed when installed by the dealer at the time of purchase.

- A. **Desert Runner® Carpeted Floor Mats**
Shield your carpet and show your pride.
- B. **Bed Rail Caps²**
Protect your bed rails from a thrashing.
- C. **Tie-down Cleat³**
Make the most of your Utili-track® Channel System.
- D. **Sliding Bed Divider³**
Divide and conquer. Works perfectly with Utili-track® system.
- E. **Hitch Ball Mount and Hitch Ball, Class III⁴**
Ready for towing up to 5,000 lbs. (sold separately).
- F. **All-season Floor Mats**
Don't let the muck mess up your truck.
- G. **Body Side Moldings and Step Rails**
Protect your doors and get a lift (sold separately).
- H. **Splash Guards**
Show that puddle who's boss.

GENUINE NISSAN ACCESSORIES

TURN BRAND-NEW INTO ALL YOU

For more information and to shop online for Frontier® Genuine Nissan Accessories, go to bit.ly/18frontier-estore



To see Genuine Nissan Accessories in action, go to bit.ly/18frontier_gnavideos

¹Genuine Nissan Accessories are covered by Nissan's Limited Warranty on Genuine Nissan Replacement Parts, Genuine NISMO® 5-Tune Parts, and Genuine Nissan Accessories for the longer of 12 months/12,000 miles (whichever occurs first) or the remaining period under the 3-year/36,000-mile (whichever occurs first) Nissan New Vehicle Limited Warranty. Terms and conditions apply. See Warranty Information Booklet for details. ²Image may not reflect actual product. ³Cargo and load capacity limited by weight and distribution. Always secure all cargo. Heavy loading of the vehicle with cargo, especially on the roof, will affect the handling and stability of the vehicle. ⁴Towing capability varies by configuration. See Nissan Towing Guide and Owner's Manual for additional information.

Nissan Frontier® PRO-4X® Crew Cab with Premium Package shown in Brilliant Silver with Premium Package, Fog Lights (standard on PRO-4X), Tow Hook (standard on PRO-4X), Splash Guards (standard on PRO-4X), Hood Protector, and Side-window Deflectors.

CHOOSE YOUR ACCESSORIES



Along with the other hard-working accessories listed below, you'll find a full line of available accessories designed specifically to work with the available unique system of channels and cleats in Frontier's incredibly versatile Utili-track® system.¹

A. Weight-distributing Hitch Ball Mount, Class IV²
Tow big or go home.

B. PRO-4X® Carpeted Floor Mats
It's the ultimate Frontier. Treat it right.

C. Sliding Tool Box³
Slide it forward when you're on the move. Slide it back for easy access on the job.

D. Non-sliding Tool Box
Like a treasure box for your tools.

E. Bedliner
Because your bed takes a beating.

F. Tow Hook
Extra strength for sticky situations.

G. Bed Tent
It's your truck! It's your campsite! It's both!

H. Sliding Bed Extender¹
Ideal for the long haul.

For more information and to shop online for Frontier® Genuine Nissan Accessories, go to bit.ly/18frontier-estore



To see Genuine Nissan Accessories in action, go to bit.ly/18frontier_gnvideos

¹Cargo shown for display purposes only. Cargo and load capacity limited by weight and distribution. Always secure all cargo. Heavy loading of the vehicle with cargo, especially on the roof, will affect the handling and stability of the vehicle. ²Towing capability varies by configuration. See Nissan Towing Guide and Owner's Manual for additional information. ³Tool Box Tray shown in photo is sold separately. See your Nissan dealer for more information.

Nissan Frontier® PRO-4X® Crew Cab with Premium Package shown in Brilliant Silver with PRO-4X Graphics Package, Sliding Bed Extender, Sliding Tool Box, Splash Guards (standard on PRO-4X), and Side-window Deflectors.

SPECIFICATIONS

Engine	S KC/JC 4x2/4x4	SV KC 4x2	SV V6 KC/JC 4x2/4x4	DR KC/JC 4x2	PRO-4X® KC/JC 4x4	SL CC 4x2/4x4
2.5-liter DOHC 16-valve 4-cylinder	■ ¹	■				
—Horsepower – 152 hp @ 5,200 rpm						
—Torque – 171 lb-ft @ 4,400 rpm						
4.0-liter DOHC 24-valve V6	■ ²		■	■	■	■
—Horsepower – 261 hp @ 5,600 rpm						
—Torque – 281 lb-ft @ 4,000 rpm						
Emissions – Tier 2, Bin 5 (Fed); LEV II – LEV (CA)	■	■	■	■	■	■
Continuously Variable Valve Timing Control System (CVTCS) on intake valves	■	■	■	■	■	■
Nissan Induction Control System	■	■	■	■	■	■
Nissan Direct Ignition System	■	■	■	■	■	■
Flexible Fuel Vehicle ^{3,4}	□ ²		□	□	□	□

Drivetrain	S KC/JC 4x2/4x4	SV KC 4x2	SV V6 KC/JC 4x2/4x4	DR KC/JC 4x2	PRO-4X® KC/JC 4x4	SL CC 4x2/4x4
5-speed manual transmission	■ ¹	■				
6-speed manual transmission	■ ^{2,5}		■ ^{2,6,7}		■ ²	
5-speed automatic transmission	□ ⁵ ■ ^{2,6}	□	□ ⁸ ■ ^{2,6,7}		□ ¹ ■ ²	■
Dana® 44 rear axle	■ ^{2,5,9}		■ ^{2,6,9}		■	■
Switch-operated 2-speed transfer case ⁶	■ ²		■		■	■
Electronic locking rear differential					■	■
Clutch start/cancel ⁹					■	■
Hill start assist and hill descent control ^{4,6}	■ ²		■		■	■

Brakes	S KC/JC 4x2/4x4	SV KC 4x2	SV V6 KC/JC 4x2/4x4	DR KC/JC 4x2	PRO-4X® KC/JC 4x4	SL CC 4x2/4x4
4-wheel vented disc brakes	■	■	■	■	■	■
4-wheel Anti-lock Braking System (ABS)	■	■	■	■	■	■
Electronic Brake force Distribution (EBD)	■	■	■	■	■	■

Suspension/Chassis Bracing/Steering	S KC/JC 4x2/4x4	SV KC 4x2	SV V6 KC/JC 4x2/4x4	DR KC/JC 4x2	PRO-4X® KC/JC 4x4	SL CC 4x2/4x4
Independent double-wishbone front suspension	■	■	■	■	■	■
Overslung multi-leaf rear suspension with solid axle	■	■	■	■	■	■
Bilstein® off-road performance shock absorbers	■	■	■	■	■	■
Front stabilizer bar	■	■	■	■	■	■
Engine-speed-sensitive power steering	■	■	■	■	■	■

Wheels/Tires	S KC/JC 4x2/4x4	SV KC 4x2	SV V6 KC/JC 4x2/4x4	DR KC/JC 4x2	PRO-4X® KC/JC 4x4	SL CC 4x2/4x4
15" x 6.5" 6-spoke steel wheels	■ ¹					
16" x 7" 6-spoke steel wheels	■ ²					
16" x 7" 6-split spoke aluminum-alloy wheels		■	■			
16" x 7" 6-spoke aluminum-alloy wheels		■	■	■	■	
18" x 7.5" 6-split spoke aluminum-alloy wheels						■
P235/75R15 mud- and snow-rated all-season tires	■ ¹					
P265/70R16 mud- and snow-rated all-season tires	■ ²	■	■			
P265/75R16 mud- and snow-rated all-terrain tires				■	■	
P265/60R18 mud- and snow-rated all-season tires						■

W Part of 5 Work Truck Package

M Part of SV Moonroof Package

VT Part of SV Value Truck Package

P Part of PRO-4X Premium Package

Exterior Features	S KC/JC 4x2/4x4	SV KC 4x2	SV V6 KC/JC 4x2/4x4	DR KC/JC 4x2	PRO-4X® KC/JC 4x4	SL CC 4x2/4x4
Skid plates (oil pan/fuel tank/transfer case)					■	
Automatic on/off headlights					■	■
Fog lights			VT	■	■	
Roof rack with crossbars					P	
Step rails and body-color side molding						■
Front tow hook ⁴	■ ²		■		■	■
Dual power outside mirrors		■	■	■	■	■
Chrome grille	■	■	■	■	■	■
Satin chrome grille						■
Upper body-color/lower black front bumper	■					
Body-color front bumper		■	■	■	■	
Chrome front bumper						■
Body-color rear bumper	■			■	■	
Chrome rear bumper		■	■	■	■	■
Black door handles and outside mirrors	■	■	■	■		
Body-color outside mirrors					■	
Chrome door handles and outside mirrors						■
Heated outside mirrors					P	■
Power sliding glass moonroof			M		P	■
Sliding rear window		■	■	■	■	■
Tow hitch receiver, Class IV ¹⁰			VT			
Long Bed			□ ^{2,4}			
Utili-track® Channel System with 4 adjustable tie-down cleats			VT		■	■
Factory-applied spray-on bedliner	W		VT		■	■

Comfort/Convenience	S KC/JC 4x2/4x4	SV KC 4x2	SV V6 KC/JC 4x2/4x4	DR KC/JC 4x2	PRO-4X® KC/JC 4x4	SL CC 4x2/4x4
5.0" Color display	■	■	■	■		
5.8" Color touch-screen display					■	■
Nissan Navigation System ¹¹					■	■
NissanConnect® Mobile Apps ¹²					■	■
Nissan Voice Recognition for navigation and audio ¹¹					■	■
Siri® Eyes Free ¹²	■	■	■	■	■	■
SiriusXM® Traffic and Travel Link with 3-month complimentary trial access ¹²	■	■	■	■	■	■
RearView Monitor	■	■	■	■	■	■
Rear Sonar System			VT		■	■
Bluetooth® Hands-free Phone System ¹²	■	■	■	■	■	■
Air conditioning	■	■	■	■	■	■
Dual Zone Automatic Temperature Control			VT		■	■
Remote keyless entry	■	■	■	■	■	■
Cruise control	■	■	■	■	■	■
Illuminated steering wheel-mounted controls	■	■	■	■	■	■
HomeLink® Universal Transceiver					■	■
Power door locks	■	■	■	■	■	■
Power windows with driver's window one-touch auto-down	■	■	■	■	■	■
Auto-dimming rearview mirror with digital compass, and outside temperature display			VT		■	■
Two 12-volt DC power outlets	■	■	■	■	■	■
Multi-functional trip computer					■	■
Sun visors with vanity mirrors and extension	■ ²	■	■	■	■	■

Seating/Appointments	S KC/JC 4x2/4x4	SV KC 4x2	SV V6 KC/JC 4x2/4x4	DR KC/JC 4x2	PRO-4X® KC/JC 4x4	SL CC 4x2/4x4
4-way manual driver's seat	■	■	■			
8-way manual driver's seat				■	■	
8-way power adjustable driver's seat					P	■
4-way manual front-passenger's seat	■	■	■	■	■	
4-way power adjustable front-passenger's seat					P	■
Driver's seat adjustable lumbar support				■	■	
Forward-facing rear flip-up seat	■ ¹	■	■ ¹	■ ¹	■ ¹	
60/40 Split flip-up rear bench seat	■ ²		■ ²	■ ²	■ ²	■
Cloth seat trim	■	■	■			
Frontier embroidered cloth seat trim				■		
PRO-4X embroidered cloth seat trim					■	
PRO-4X embroidered leather-appointed seats					P	
Leather-appointed seats						■
Heated front seats			VT		■	■
Leather-wrapped steering wheel			VT		■	■
White-faced gauges with satin chrome bezels				■	■	
Gauges with satin chrome bezels						■

Audio/Entertainment	S KC/JC 4x2/4x4	SV KC 4x2	SV V6 KC/JC 4x2/4x4	DR KC/JC 4x2	PRO-4X® KC/JC 4x4	SL CC 4x2/4x4
AM/FM/CD audio system with four speakers	■ ¹	■	■ ¹	■ ¹		
AM/FM/CD audio system with six speakers	■ ²		VT ¹ ■ ²	■ ²	■ ¹	
Rockford Fosgate®-powered audio system with ten speakers, including subwoofer					■ ²	■
USB port	■	■	■	■	■	■
SiriusXM® Satellite Radio with 3-month complimentary trial access ¹²		■	■	■	■	■
Streaming audio via Bluetooth® wireless technology ¹²	■	■	■	■	■	■

Safety/Security	S KC/JC 4x2/4x4	SV KC 4x2	SV V6 KC/JC 4x2/4x4	DR KC/JC 4x2	PRO-4X® KC/JC 4x4	SL CC 4x2/4x4
Nissan Advanced Air Bag System with dual-stage supplemental front air bags with seat belt and occupant classification sensors	■	■	■	■	■	■
Driver and front passenger seat-mounted side-impact supplemental air bags		■	■	■	■	■
Roof-mounted curtain supplemental air bags with rollover sensor for side-impact and rollover head protection for front and rear-seat outboard occupants	■	■	■	■	■	■
Vehicle Dynamic Control (VDC) ¹³ with Traction Control System (TCS)	■	■	■	■	■	■
Active Brake Limited Slip (ABLS)	■	■	■	■	■	■
LATCH System (Lower Anchors and Tethers for Children)	■	■	■	■	■	■
Vehicle Security System			VT		■	■

¹King Cab only. ²Crew Cab only. ³Flexible Fuel Vehicles (FFV) are not available in all states — please check with your local Nissan dealer. ⁴Automatic transmission only. ⁵4x2 only. ⁶4x4 only. ⁷Standard bed only. ⁸King Cab, Crew Cab Long Bed, and Crew Cab 4x2 models only. ⁹Manual transmission only. ¹⁰7-pin connector trailer wire harness and tow hitch receiver required, both sold separately. See Nissan Towing Guide and Owner's Manual for additional information. ¹¹Never program while driving. GPS mapping may not be detailed in all areas or reflect current road status. ¹²Available services/features may be shown. Compatible connected device may be required. Only use services/features and device when safe and legal to do so. Subject to GPS and wireless network availability and connection, and system/technology limitations. Text rates/data usage/subscription may apply. Some services/features provided by companies not within Nissan or its partners' or agents' control and may be discontinued at any time. For more information, see dealer, Owner's Manual, or NissanUSA.com/connect/important-information. ¹³VDC, which should remain on when driving except when freeing the vehicle from mud or snow, cannot prevent accidents due to abrupt steering, carelessness, or dangerous driving techniques. ¹⁴Subject to vehicle tow/payload capacity. See Nissan Towing Guide and Owner's Manual for additional information. 7-pin connector trailer wire harness and tow hitch receiver required, both sold separately. Bilstein® is

TOWING/PAYLOAD/MPG

Maximum Towing – Lbs. (Manual/Automatic Transmission) ¹⁴					
	S	SV	DR	PRO-4X	SL
4-cylinder					
King Cab 4x2	3,790/3,780	3,790/3,780	–	–	–
V6 King Cab 4x2	–	–/6,710	–/6,690	–	–
V6 King Cab 4x4	–	–/6,510	–	–/6,450	–
V6 Crew Cab 4x2	6,640/6,620	–/6,640	–/6,610	–	–/6,480
V6 Crew Cab 4x4	–/6,370	6,370/6,370	–	6,310/6,290	–/6,240
V6 Crew Cab					
Long Bed 4x2	–	–/6,500	–	–	–
Long Bed 4x4	–	–/6,240	–	–	–

Capacities	King Cab	Crew Cab/Long Bed
Seating capacity	4	5
Interior passenger volume (cu. ft.)	92	107
Fuel tank (gals.)	21.1	21.1

Maximum Payload – Lbs. (Manual/Automatic Transmission)					
	S	SV	DR	PRO-4X	SL
4-cylinder					
King Cab 4x2	900/890	910/890	–	–	–
V6 King Cab 4x2	–	–/1,430	–/1,420	–	–
V6 King Cab 4x4	–	–/1,360	–	–/1,180	–
V6 Crew Cab 4x2	1,450/1,460	–/1,450	–/1,340	–	–/1,370
V6 Crew Cab 4x4	–/1,340	1,120/1,350	–	1,040/1,020	–/1,180
V6 Crew Cab					
Long Bed 4x2	–	–/1,360	–	–	–
Long Bed 4x4	–	–/1,220	–	–	–

2018 EPA Fuel Economy Estimates		
City/Hwy/Combined MPG	Manual Transmission	Automatic Transmission
4-cylinder – 4x2 (4x4)	19/23/21 (N/A)	17/22/19 (N/A)
V6 – 4x2 (4x4)	16/22/19 (16/21/18)	16/23/19 (15/21/17)
Flexible Fuel Vehicle – 4x2 (4x4)	–	16/22/18 (15/21/17)

—Actual mileage may vary with driving conditions — use for comparison only.

a registered trademark of ThyssenKrupp Bilstein GmbH. Bluetooth® word mark and logos are owned by Bluetooth SIG, Inc., and any use of such marks by Nissan is under license. Dana® is a registered trademark of Dana Corporation. HomeLink® is a registered trademark of Gentex Corporation. Rockford Fosgate® is a registered trademark of Rockford Corporation. Siri® and Siri® Eyes Free are registered trademarks of Apple, Inc. The Sirius®, XM®, and SiriusXM® names and all related marks and logos are trademarks of Sirius XM Radio Inc. This brochure is intended for general descriptive and informational purposes only. It is subject to change and does not constitute an offer, representation or warranty (express or implied) by Nissan North America, Inc. Interested parties should confirm the accuracy of any information in this brochure as it relates to a vehicle directly with Nissan North America, Inc., before relying on it to make a purchase decision. Nissan North America, Inc., reserves the right to make changes, at any time, without prior notice, in prices, colors, materials, equipment, specifications, and models and to discontinue models or equipment. Due to continuous product development and other pre- and post-production factors, actual vehicle, materials and specifications may vary from this brochure. Some vehicles shown with optional equipment. See the actual vehicle for complete accuracy. Availability and delivery times for particular models or equipment may vary. Specifications, options and accessories may differ in Hawaii, U.S. territories and other countries. For additional information on availability, options or accessories, see your Nissan dealer or contact Nissan North America, Inc. At NissanUSA.com, you'll find virtual product demonstrations, a way to "build your own Nissan," a dealer locator, and more information about key Nissan support services. Or if you'd prefer, call **1-800-NISSAN-3** for answers to specific questions about Frontier® or any other Nissan vehicle. The Nissan names, logos, product names, feature names, and slogans are trademarks owned by or licensed to Nissan Motor Co. Ltd. and/or its North American subsidiaries. Other trademarks and trade names are those of their respective owners. **Always wear your seat belt, and please drive responsibly.** ©2017 Nissan North America, Inc. '18 Frontier. 1720684-N-09/17-60M-CGI