

NISSAN INTELLIGENT MOBILITY™

Nissan Intelligent Mobility guides everything we do. We're using new technologies to transform cars from mere driving machines into assistants. Together the journey is more confident, connected, and exciting. Whether it's cars that assist in the driving task, or highways that charge your EV as you go along, it's all in the very near future. And it's a future already taking shape in the Nissan you drive today.

SEE FRONTIER® COME TO LIFE

Go to NissanUSA.com and find an interactive brochure for Frontier and every Nissan in the lineup. Available on desktop, smartphone, or tablet, it's the full product story – including demos, videos, and complete info on trims, colors, and accessories.



Innovation
that excites

2019
FRONTIER®



Images may show additional available equipment. ¹Please follow Towing Guidelines. Towing capability varies by configuration. See Nissan Towing Guide and Owner's Manual for additional information. ²Never program while driving. GPS mapping may not be detailed in all areas or reflect current road status. ³Available features. ⁴Crew Cab only. ⁵Available services/features may be shown. Compatible connected device may be required. Only use services/features and device when safe and legal to do so. Subject to GPS and wireless network availability and connection, and system/technology limitations. Text rates/data usage/subscription may apply. Some services/features provided by companies not within Nissan or its partners' or agents' control and may be discontinued at any time. For more information, see dealer, Owner's Manual, or NissanUSA.com/connect/important-information. Terms and conditions of Subscriber Agreement apply. NissanConnect EV features are provided by Nissan North America, Sirius XM Connected Vehicle Services Inc. ("Sirius XM") partners with Nissan North America to provide NissanConnect Services powered by SiriusXM. All stated terms, disclosures and limitations of liability associated with connected vehicle services extend to Sirius XM and its affiliate, Sirius XM Radio Inc. SiriusXM is a registered trademark of Sirius XM Radio Inc. ⁶Cargo shown for display purposes only. Cargo and load capacity limited by weight and distribution. Always secure cargo. Heavy loading of the vehicle with cargo, especially on the roof, will affect the handling and stability of the vehicle. ⁷Frontier® SV V6 King Cab® 4x2 shown. Please follow Towing Guidelines. Towing capability varies by configuration. See Nissan Towing Guide and Owner's Manual for additional information. ⁸Flexible Fuel Vehicles (FFV) are not available in all states — please check with your local Nissan dealer. ⁹King Cab® only. ¹⁰Driving is serious business and requires your full attention. If you have to use the connected device while driving, exercise extreme caution at all times so full attention may be given to vehicle operation. ¹¹Use Hands Free Text Messaging when parked in a safe location. If you must use while driving, monitor traffic conditions and keep both hands on the steering wheel to prevent collisions. Compatible device required. Message and data rates may apply. ¹²RearView Monitor may not detect every object and does not eliminate blind spots or warn of moving objects. See Owner's Manual for safety information. ¹³Vehicle Dynamic Control cannot prevent collisions due to abrupt steering, carelessness, or dangerous driving techniques. It should remain on when driving, except when freeing the vehicle from mud or snow. See Owner's Manual for safety information. ¹⁴Tire Pressure Monitoring System is not a substitute for regular tire pressure checks. See Owner's Manual for safety information. ¹⁵4x2 only. ¹⁶4x4 only. Not available on Crew Cab Long Bed. ¹⁷Standard on 4x2 models and Crew Cab Long Bed. ¹⁸Features in this package are standard on SV V6 with manual transmission. ¹⁹Sonar System may not detect every object. Driver should always check surroundings before driving. See Owner's Manual for safety information. ²⁰Genuine Nissan Accessories are covered by Nissan's Limited Warranty on Genuine Nissan Replacement Parts, Genuine NISMO® S-Tune Parts, and Genuine Nissan Accessories for the longer of 12 months/12,000 miles (whichever occurs first) or the remaining period under the 3-year/36,000-mile (whichever occurs first) Nissan New Vehicle Limited Warranty. Terms and conditions apply. See dealer, Warranty Information Booklet, or parts.NissanUSA.com for details. ²¹Image may not reflect actual product. ²²Tool Box Tray shown in photo is sold separately. See your Nissan dealer for more information. ²³Automatic transmission only. ²⁴4x4 only. ²⁵Standard Bed only. ²⁶King Cab, Crew Cab Long Bed, and Crew Cab 4x2 models only. ²⁷Manual transmission only. ²⁸Air bags are only a supplemental restraint system. Always wear your seat belt. Rear-facing child restraints should not be placed in the front-passenger's seat. All children 12 and under should ride in the rear seat properly secured in child restraints, booster seats, or seat belts according to their size. Air bags will only inflate in certain accidents. See Owner's Manual for safety information. ²⁹Subject to vehicle tow/payload capacity. See Nissan Towing Guide and Owner's Manual for additional information. ³⁰7-pin connector trailer wire harness and tow hitch receiver required, both sold separately. ³¹2018 Fuel Economy Estimates. 2019 estimates not available at time of printing. ³²For a period of 36 months/36,000 miles from the date the vehicle is delivered to the first retail buyer or otherwise put into use, whichever is earlier. Bilstein® is a registered trademark of ThyssenKrupp Bilstein GmbH. Bluetooth® is a registered trademark of Bluetooth SIG, Inc. Dana® is a registered trademark of Dana Corporation. Facebook® is a registered trademark of Facebook, Inc. HomeLink® is a registered trademark of Genetec Corporation. Rockford Fosgate® is a registered trademark of Rockford Corporation. Siri® and Siri® Eyes Free are registered trademarks of Apple, Inc. The Sirius®, XM®, and SiriusXM® names and all related marks and logos are trademarks of Sirius XM Radio Inc. All other trademarks are the property of their respective owners. Twitter® is a registered trademark of Twitter, Inc. YouTube® is a registered trademark of Google, Inc. This brochure is intended for general descriptive and informational purposes only. It is subject to change and does not constitute an offer, representation or warranty (express or implied) by Nissan North America, Inc. Interested parties should confirm the accuracy of any information in this brochure as it relates to a vehicle directly with Nissan North America, Inc., before relying on it to make a purchase decision. Nissan North America, Inc., reserves the right to make changes, at any time, without prior notice, in prices, colors, materials, equipment, specifications, and models and to discontinue models or equipment. Due to continuous product development and other pre- and post-production factors, actual vehicle, materials and specifications may vary from this brochure. Some vehicles shown with optional equipment. See the actual vehicle for complete accuracy. Availability and delivery times for particular models or equipment may vary. Specifications, options and accessories may differ in Hawaii, U.S. territories and other countries. For additional information on availability, options or accessories, see your Nissan dealer or contact Nissan North America, Inc. At NissanUSA.com, you'll find virtual product demonstrations, a way to "build your own Nissan," a dealer locator, and more information about key Nissan support services. Or if you'd prefer, call 1-800-NISSAN-3 for answers to specific questions about Frontier® or any other Nissan vehicle. The Nissan names, logos, product names, feature names, and slogans are trademarks owned by or licensed to Nissan Motor Co. Ltd. and/or its North American subsidiaries. Other trademarks and trade names are those of their respective owners. Always wear your seat belt, and please drive responsibly. ©2018 Nissan North America, Inc. ¹⁹ Frontier®. 1922560-N-07/18-60K-CGI

Take the path less traveled. On-road or off. Power through most every job, big or small. Stop. Back it up. Take a look at what's directly behind you, hitch up your weekend toys, and go.¹ With the Nissan Navigation System^{2,3} and advanced off-road technologies,³ the world is your playground. The 2019 Nissan Frontier.[®] Tech that moves you.



Nissan Frontier[®] PRO-4X[®] King Cab[®] shown in Cayenne Red Metallic with accessory Body Side Moldings.



SURROUND YOURSELF WITH THE BEST

Whether you're on the job or on the go, Frontier® offers features that take things up a notch. Embrace a great-looking interior plus an available sporty, leather-wrapped steering wheel with cruise control and audio adjustments. Crank up the available Rockford Fosgate®-powered audio system, which features ten speakers, including subwoofers.⁴ Make and take calls with your hands on the wheel using the Bluetooth® Hands-free Phone System.⁵ NissanConnect® Mobile Apps brings your favorite apps along.⁵ And get there using the Nissan Navigation System.² Available Dual Zone Automatic Temperature Control keeps everyone happy.

4X4 CAPABILITY

With the available 4x4 system, you can choose between 2WD, 4H, and 4LO, to help maximize fuel efficiency on the highway and get serious off-road capability on command. Four-wheel Active Brake Limited Slip (ABLS), and available hill start assist and hill descent control help you conquer even the roughest terrain.

Bilstein® shocks

All-terrain tires

Body-color rear bumper and satin chrome grille

16" 6-spoke aluminum-alloy wheels

PRO-4X



SHAKE UP SOME SAND

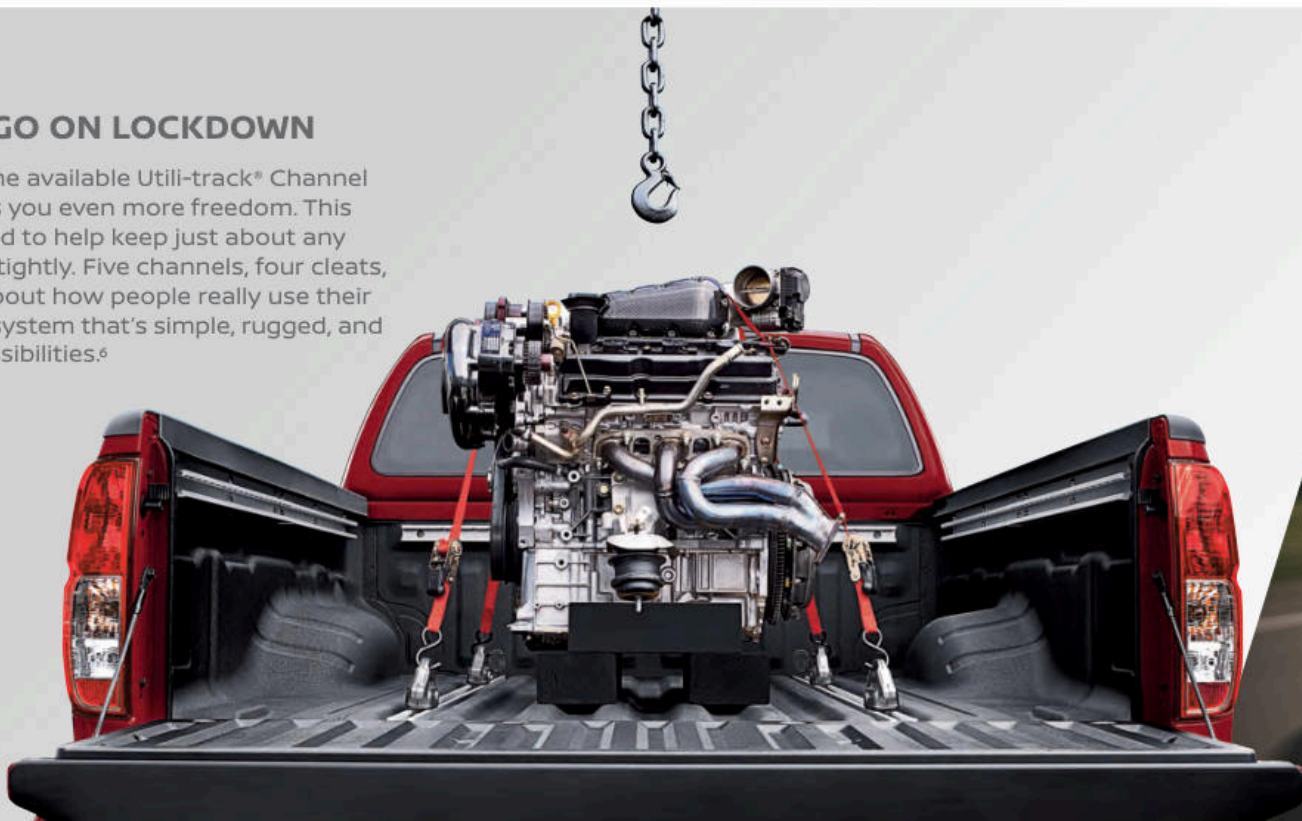
The Desert Runner serves up major attitude with 16" 6-spoke aluminum-alloy wheels, a satin chrome grille, and details like fog lights and a body-color rear bumper. Bilstein® off-road performance shocks and 265/75R16 mud- and snow-rated all-terrain tires help maximize your potential. And a unique bedside decal tops it off – just before you leave them in the dust.

DESERT RUNNER



PUT YOUR CARGO ON LOCKDOWN

When equipped with the available Utili-track® Channel System, Frontier® gives you even more freedom. This system is fully equipped to help keep just about any type of cargo secured tightly. Five channels, four cleats, and a lot of thought about how people really use their trucks have created a system that's simple, rugged, and offers near-infinite possibilities.⁶



261

HORSEPOWER

281

LB-FT OF TORQUE

UP TO

6,720

LBS. MAX TOWING⁷

BRING THE BIG TOYS

Power – either you've got it, or you don't. And with Frontier, you've got it in a big way. With an available 4.0-liter V6 engine packing 261 horsepower, your V6 is chomping at the bit. And with a massive 281 lb-ft of torque, you can tow or haul just about anything you need to bring along.⁷ There's even an available Flexible Fuel Vehicle feature that allows you to choose ethanol E85, standard gasoline or any mixture of the two fuels.⁸



CHOOSE YOUR COLOR

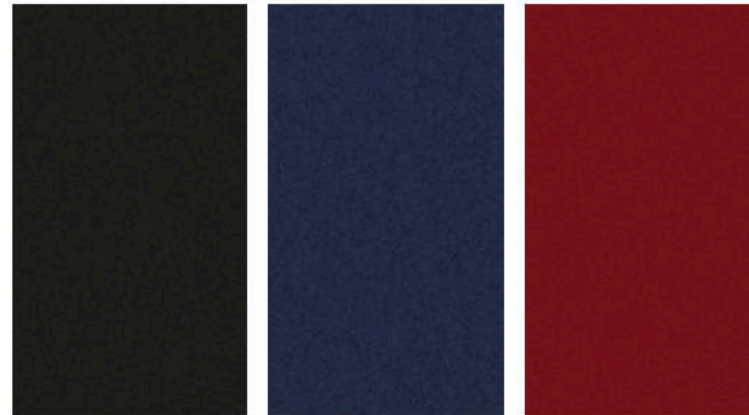


Glacier White

Brilliant Silver Metallic

Gun Metallic

	S	SV	DR	PRO	SL
STEEL CLOTH	■	■ ^L			
STEEL LEATHER					■
BEIGE CLOTH		■ ^L			
BEIGE LEATHER					■
GRAPHITE CLOTH		■ ^L	■ ^L		
GRAPHITE STEEL CLOTH			■	■	
GRAPHITE LEATHER				■ ^L	



Magnetic Black Pearl

Arctic Blue Metallic

Cayenne Red Metallic

	S	SV	DR	PRO	SL
STEEL CLOTH	■	■ ^L			
STEEL LEATHER					■
BEIGE CLOTH		■			
BEIGE LEATHER					■
GRAPHITE CLOTH	■ ^L	■ ^L			
GRAPHITE STEEL CLOTH			■	■	
GRAPHITE LEATHER				■ ^L	

■ Standard

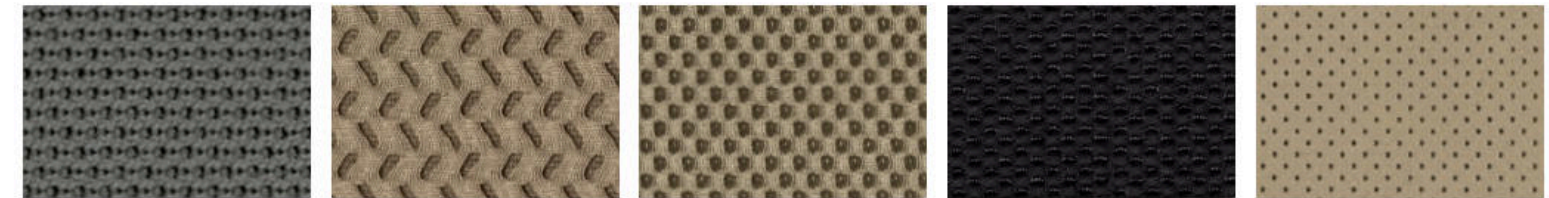
■ Part of PRO-4X[®] Luxury Package

Nissan has taken care to ensure that the color swatches presented here are the closest possible representations of actual vehicle colors. Swatches may vary slightly due to the printing process and whether viewed in daylight, fluorescent or incandescent light. Please see the actual colors at your dealer.

CHOOSE YOUR INTERIOR



Nissan Frontier[®] SL Crew Cab shown in Steel Leather.



Steel Cloth
S King Cab[®]

Beige Cloth
SV King Cab

Beige Cloth
SV Crew Cab

Graphite Steel Cloth
Desert Runner[®] | PRO-4X[®]

Beige Leather
SL Crew Cab



Graphite Cloth
S King Cab

Graphite Cloth
SV King Cab

Steel Cloth
S | SV Crew Cab

Graphite Leather
PRO-4X Crew Cab

Steel Leather
SL Crew Cab

CHOOSE YOUR TRIM LEVEL

S KING CAB® CREW CAB

2.5-liter 4-cylinder engine with 152 hp and 171 lb-ft of torque, 5-speed manual transmission, available 5-speed automatic transmission, 15" 6-spoke steel wheels, Active Brake Limited Slip (ABLS), full-length and fully boxed ladder frame, 7" touch-screen display, AM/FM audio system with four speakers, USB port,¹⁰ Bluetooth® Hands-free Phone System,⁵ Hands-free Text Messaging Assistant,¹¹ Bluetooth® streaming audio,⁵ Siri® Eyes Free,⁵ RearView Monitor,¹² illuminated steering wheel-mounted audio and cruise controls, power door locks and windows, rear access doors, second-row under-seat storage,⁶ Vehicle Dynamic Control (VDC),¹³ Tire Pressure Monitoring System (TPMS)¹⁴

Crew Cab adds: 4.0-liter V6 engine with 261 hp and 281 lb-ft of torque, 6-speed manual transmission,¹⁵ available 5-speed automatic transmission, four full-size doors with seating for five, 16" 6-spoke steel wheels, AM/FM audio system with six speakers

AVAILABLE PACKAGE:

Work Truck Package



SV 4-CYL. / V6 KING CAB CREW CAB CREW CAB LONG BED

SV 4-cylinder includes S equipment plus: 16" 6-split spoke aluminum-alloy wheels, body-color front bumper, chrome rear bumper, remote keyless entry, tilt steering column, power door locks and windows, sliding rear window, sun visors with vanity mirrors and extension

SV V6 includes SV 4-cyl. equipment plus: 4.0-liter V6 engine with 261 hp and 281 lb-ft of torque, 5-speed automatic transmission, bed rail caps

Crew Cab adds: 4.0-liter V6 engine with 261 hp and 281 lb-ft of torque, 6-speed manual transmission,¹⁶ available 5-speed automatic transmission,¹⁷ four full-size doors with seating for five, AM/FM audio system with six speakers

AVAILABLE PACKAGES:

Value Truck Package (V6 only),¹⁸ Midnight Edition® Package (Crew Cab only), Moonroof Package (Crew Cab only)



DESERT RUNNER® KING CAB CREW CAB

Includes SV V6 equipment plus: Bilstein® off-road performance shocks, 16" 6-spoke aluminum-alloy wheels with all-terrain tires, fog lights, satin chrome grille, body-color rear bumper, 8-way manual driver's seat, white-faced gauges, Frontier embroidered cloth seat trim

Crew Cab adds: Four full-size doors with seating for five, AM/FM audio system with six speakers



PRO-4X® KING CAB CREW CAB

Includes SV V6 equipment plus: Bilstein® off-road performance shocks, electronic locking rear differential, skid plates, 16" 6-spoke aluminum-alloy wheels with all-terrain tires, automatic on/off headlights and fog lights, Utili-track® Channel System,⁶ factory-applied spray-on bedliner, satin chrome grille, body-color rear bumper and outside mirrors, PRO-4X bedside decal, NissanConnect® 5.8" touch-screen display,⁵ Nissan Navigation System,² NissanConnect Mobile Apps,⁵ Nissan Voice Recognition for navigation and audio,² SiriusXM® Traffic and Travel Link® with 3-month complimentary trial access,⁵ SiriusXM® Radio with 3-month complimentary trial access,⁵ Rear Sonar System,¹⁹ Dual Zone Automatic Temperature Control, PRO-4X embroidered cloth seat trim, 8-way manual driver's seat, heated front seats, white-faced gauges, leather-wrapped steering wheel

Crew Cab adds: 6-speed manual transmission, available 5-speed automatic transmission, clutch start/cancel (manual transmission only), four full-size doors with seating for five, Rockford Fosgate®-powered audio system with ten speakers

AVAILABLE PACKAGE:

Premium Package (Crew Cab only)



SL CREW CAB

Includes SV V6 equipment plus: 18" 6-split spoke aluminum-alloy wheels, automatic on/off headlights and fog lights, Utili-track® Channel System,⁶ factory-applied spray-on bedliner, chrome front bumper, outside mirrors and door handles, heated outside mirrors, power sliding glass moonroof with tilt feature, body-color side moldings, step rails, NissanConnect 5.8" touch-screen display,⁵ Nissan Navigation System,² NissanConnect Mobile Apps,⁵ Nissan Voice Recognition for navigation and audio,² SiriusXM® Traffic and Travel Link® with 3-month complimentary trial access,⁵ Rockford Fosgate®-powered audio system with ten speakers, SiriusXM® Radio with 3-month complimentary trial access,⁵ Rear Sonar System,¹⁹ Dual Zone Automatic Temperature Control, HomeLink® Universal Transceiver, leather-appointed seats, 8-way power adjustable driver's seat, 4-way power adjustable front-passenger's seat, heated front seats, leather-wrapped steering wheel and shift knob



CHOOSE YOUR PACKAGE



WORK TRUCK PACKAGE³ | S

Available on S with automatic transmission only

- Factory-applied spray-on bedliner
- Bed rail caps

- Splash guards (standard on 4x4)
- All-season floor mats



2018 model shown.

MIDNIGHT EDITION⁸ | SV

Available on SV Crew Cab Standard Bed with automatic transmission only

- Exclusive Midnight Edition black 18" alloy wheels
- Black front grille

- Body-color front and rear bumpers
- Black door handles and outside mirrors
- Black step rails
- Black Midnight Edition badging



VALUE TRUCK PACKAGE | SV

Available on SV V6 King Cab,⁸ SV Crew Cab with automatic transmission, and SV Crew Cab Long Bed 4x4 only

- Rear Sonar System¹⁹
- Dual Zone Automatic Temperature Control
- Six speakers (standard on King Cab⁸)
- Auto-dimming rearview mirror, digital compass, and outside temperature display
- Factory-applied spray-on bedliner

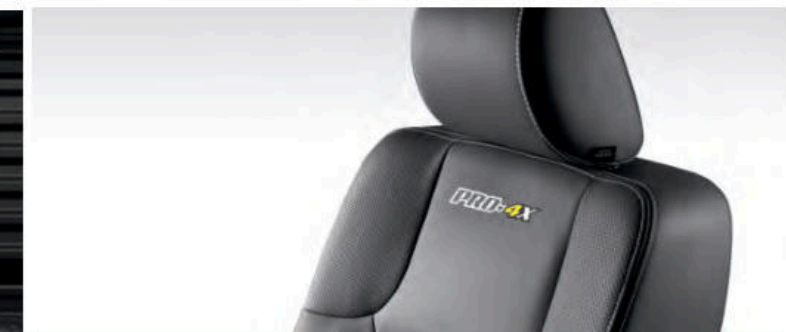
- Utili-track[®] Channel System with 4 tie-down cleats⁶
- Fog lights
- Vehicle Security System
- Heated front seats
- Sliding bed extender
- Tow hitch receiver, Class IV¹
- Leather-wrapped steering wheel and shift knob



MOONROOF PACKAGE | SV

Available on SV Crew Cab Standard Bed with automatic transmission only

- Power sliding glass moonroof with tilt feature



PREMIUM PACKAGE | PRO-4X⁸

Available on PRO-4X Crew Cab with automatic transmission only

- PRO-4X embroidered leather-appointed seats
- White contrast interior stitching
- 8-way power adjustable driver's seat
- 4-way power adjustable front-passenger's seat
- Heated outside mirrors
- Rear fold-down center armrest
- Power sliding glass moonroof
- Roof rack with crossbars⁶

CHOOSE YOUR ACCESSORIES



Every Genuine Nissan Accessory is custom-fit, custom-designed and durability-tested. Each one is backed by Nissan's 3-year/36,000-mile (whichever occurs first) limited warranty (if installed by dealer at the time of purchase), and can be financed when installed by dealer at time of purchase.²⁰

- A. **Desert Runner® Carpeted Floor Mats**
Shield your carpet and show your pride.
- B. **Bed Rail Caps²¹**
Protect your bed rails from a thrashing.
- C. **Tie-down Cleat⁶**
Make the most of your Utili-track® Channel System.
- D. **Sliding Bed Divider⁶**
Divide and conquer. Works perfectly with Utili-track® system.
- E. **Hitch Ball Mount and Hitch Ball, Class III⁷**
Ready for towing up to 5,000 lbs. (sold separately).
- F. **All-season Floor Mats**
Don't let the muck mess up your truck.
- G. **Body Side Moldings and Step Rails**
Protect your doors and get a lift (sold separately).
- H. **Splash Guards**
Show that puddle who's boss.

GENUINE NISSAN ACCESSORIES STEP UP YOUR GAME

For more information and to shop online for Frontier® Genuine Nissan Accessories, go to bit.ly/19frontier-estore



To see Genuine Nissan Accessories in action, go to bit.ly/19frontier_gnvideos

Nissan Frontier® Crew Cab PRO-4X® shown in Brilliant Silver Metallic with Premium Package, Fog Lights (standard on PRO-4X), Tow Hook (standard on PRO-4X), Splash Guards (standard on PRO-4X), Hood Protector, Bed Rail Caps (standard on PRO-4X)²¹ and Side-window Deflectors.

CHOOSE YOUR ACCESSORIES



Along with the other hard-working accessories listed below, you'll find a full line of available accessories designed specifically to work with the available unique system of channels and cleats in Frontier's incredibly versatile Utili-track® system.⁶

A. **Weight-distributing Hitch Ball Mount, Class IV¹**
Tow big or go home.

B. **PRO-4X® Carpeted Floor Mats**
It's the ultimate Frontier. Treat it right.

C. **Sliding Tool Box²²**
Slide it forward when you're on the move. Slide it back for easy access on the job.

D. **Non-sliding Tool Box**
Like a treasure box for your tools.

E. **Bedliner**
Because your bed takes a beating.

F. **Tow Hook**
Extra strength for sticky situations.

G. **Bed Tent**
It's your truck! It's your campsite! It's both!

H. **Sliding Bed Extender⁶**
Ideal for the long haul.

For more information and to shop online for Frontier® Genuine Nissan Accessories, go to bit.ly/19frontier-estore



To see Genuine Nissan Accessories in action, go to bit.ly/19frontier_gnavideos

Nissan Frontier® Crew Cab PRO-4X® shown in Brilliant Silver Metallic with Premium Package, PRO-4X Graphics Package, Sliding Bed Extender,⁶ Sliding Tool Box,²² Splash Guards (standard on PRO-4X), and Side-window Deflectors.

SPECIFICATIONS

Engines	S KC/CC 4x2/4x4	SV KC 4x2	SV V6 KC/CC 4x2/4x4	DR KC/CC 4x2	PRO-4X [®] KC/CC 4x4	SL CC 4x2/4x4
2.5-liter DOHC 16-valve 4-cylinder	■ ⁹	■				
—Horsepower – 152 hp @ 5,200 rpm						
—Torque – 171 lb-ft @ 4,400 rpm						
4.0-liter DOHC 24-valve V6	■ ⁴		■	■	■	■
—Horsepower – 261 hp @ 5,600 rpm						
—Torque – 281 lb-ft @ 4,000 rpm						
Continuously Variable Valve Timing Control System (CVTCS) on intake valves	■	■	■	■	■	■
Nissan Induction Control System	■	■	■	■	■	■
Nissan Direct Ignition System	■	■	■	■	■	■
Flexible Fuel Vehicle ^{8, 23}	□ ⁴		□	□	□	□

Drivetrain	S KC/CC 4x2/4x4	SV KC 4x2	SV V6 KC/CC 4x2/4x4	DR KC/CC 4x2	PRO-4X [®] KC/CC 4x4	SL CC 4x2/4x4
5-speed manual transmission	■ ⁹	■				
6-speed manual transmission	■ ^{4, 15}		■ ^{4, 24, 25}		■ ⁴	
	□ ¹⁶	□	□ ²⁴		□ ⁹	■
	■ ^{4, 24}		□ ^{4, 24, 25}		□ ⁴	
5-speed automatic transmission						
Dana [®] 44 rear axle	■ ^{4, 15, 27}		■ ^{4, 15, 27}		■	
Switch-operated 2-speed transfer case ²⁵	■ ⁴		■		■	■
Electronic locking rear differential					■	
Clutch start/cancel ²⁷					■	
Hill start assist and hill descent control ^{23, 24}	■ ⁴		■		■	■

Brakes	S KC/CC 4x2/4x4	SV KC 4x2	SV V6 KC/CC 4x2/4x4	DR KC/CC 4x2	PRO-4X [®] KC/CC 4x4	SL CC 4x2/4x4
4-wheel vented disc brakes	■	■	■	■	■	■
4-wheel Anti-lock Braking System (ABS)	■	■	■	■	■	■
Electronic Brake force Distribution (EBD)	■	■	■	■	■	■

Suspension/Chassis Bracing/Steering	S KC/CC 4x2/4x4	SV KC 4x2	SV V6 KC/CC 4x2/4x4	DR KC/CC 4x2	PRO-4X [®] KC/CC 4x4	SL CC 4x2/4x4
Independent double-wishbone front suspension	■	■	■	■	■	■
Overslung multi-leaf rear suspension with solid axle	■	■	■	■	■	■
Bilstein [®] off-road performance shock absorbers				■	■	
Front stabilizer bar	■	■	■	■	■	■
Engine-speed-sensitive power steering	■	■	■	■	■	■

Wheels/Tires	S KC/CC 4x2/4x4	SV KC 4x2	SV V6 KC/CC 4x2/4x4	DR KC/CC 4x2	PRO-4X [®] KC/CC 4x4	SL CC 4x2/4x4
15" x 6.5" 6-spoke steel wheels	■ ⁹					
16" x 7" 6-spoke steel wheels	■ ⁴					
16" x 7" 6-split spoke aluminum-alloy wheels		■	■			
Exclusive Midnight Edition [®] black 18" x 7.5" alloy wheels			ME			
16" x 7" 6-spoke aluminum-alloy wheels				■		
18" x 7.5" 6-split spoke aluminum-alloy wheels						■
P235/75R15 mud- and snow-rated all-season tires	■ ⁹					
P265/70R16 mud- and snow-rated all-season tires	■ ⁴	■	■			
P265/75R16 mud- and snow-rated all-terrain tires				■	■	
P265/60R18 mud- and snow-rated all-season tires						■

Exterior Features	S KC/CC 4x2/4x4	SV KC 4x2	SV V6 KC/CC 4x2/4x4	DR KC/CC 4x2	PRO-4X [®] KC/CC 4x4	SL CC 4x2/4x4
Skid plates (oil pan/fuel tank/transfer case)					■	
Automatic on/off headlights					■	■
Fog lights			VT	■	■	■
Roof rack with crossbars					P	
Black step rails			ME			
Step rails and body-color side molding						■
Front tow hook ²⁴	■ ⁴		■		■	■
Dual power outside mirrors	■	■	■	■	■	■
Chrome grille	■	■	■	■	■	■
Black front grille			ME			
Satin chrome grille				■	■	
Upper body-color/lower black front bumper	■					
Body-color front bumper		■	■	■	■	
Chrome front bumper						■
Body-color rear bumper	■		ME	■	■	
Chrome rear bumper		■	■			■
Black Midnight Edition badging			ME			
Black door handles and outside mirrors	■	■	■	■		
Body-color outside mirrors					■	
Chrome door handles and outside mirrors						■
Heated outside mirrors					P	■
Power sliding glass moonroof					P	■
Sliding rear window		■	■	■	■	■
Tow hitch receiver, Class IV ¹			VT			
Long Bed			□ ^{4, 22}			
Utili-track [®] Channel System with 4 adjustable tie-down cleats ⁶			VT		■	■
Factory-applied spray-on bedliner	W		VT		■	■

Comfort/Convenience	S KC/CC 4x2/4x4	SV KC 4x2	SV V6 KC/CC 4x2/4x4	DR KC/CC 4x2	PRO-4X [®] KC/CC 4x4	SL CC 4x2/4x4
7" touch-screen display	■	■	■	■		
NissanConnect [®] 5.8" touch-screen display ⁵					■	■
Nissan Navigation System ²					■	■
NissanConnect Mobile Apps ⁵					■	■
Nissan Voice Recognition for navigation and audio ²					■	■
Siri [®] Eyes Free ⁵	■	■	■	■	■	■
SiriusXM [®] Traffic and Travel Link [®] with 3-month complimentary trial access ⁵					■	■
RearView Monitor ¹²	■	■	■	■	■	■
Rear Sonar System ¹⁹			VT		■	■
Bluetooth [®] Hands-free Phone System ⁵	■	■	■	■	■	■
Air conditioning	■	■	■	■	■	■
Dual Zone Automatic Temperature Control			VT		■	■
Remote keyless entry	■	■	■	■	■	■
Cruise control	■	■	■	■	■	■
Illuminated steering wheel-mounted controls	■	■	■	■	■	■
HomeLink [®] Universal Transceiver						■
Power door locks		■	■	■	■	■
Power windows with driver's window one-touch auto-down		■	■	■	■	■
Auto-dimming rearview mirror with digital compass, and outside temperature display			VT		■	■
Two 12-volt DC power outlets ¹⁰	■	■	■	■	■	■

Comfort/Convenience (continued)	S KC/CC 4x2/4x4	SV KC 4x2	SV V6 KC/CC 4x2/4x4	DR KC/CC 4x2	PRO-4X [®] KC/CC 4x4	SL CC 4x2/4x4
Multi-functional trip computer				■	■	■
Sun visors with vanity mirrors and extension	■ ⁴	■	■	■	■	■

Seating/Appointments	S KC/CC 4x2/4x4	SV KC 4x2	SV V6 KC/CC 4x2/4x4	DR KC/CC 4x2	PRO-4X [®] KC/CC 4x4	SL CC 4x2/4x4
4-way manual driver's seat	■	■	■			
8-way manual driver's seat				■	■	
8-way power adjustable driver's seat					P	■
4-way manual front-passenger's seat	■	■	■	■	■	
4-way power adjustable front-passenger's seat					P	■
Driver's seat adjustable lumbar support				■	■	■
Forward-facing rear flip-up seat	■ ⁹	■	■ ⁹	■ ⁹	■ ⁹	
60/40 Split flip-up rear bench seat	■ ⁴		■ ⁴	■ ⁴	■ ⁴	■
Cloth seat trim	■	■	■			
Frontier embroidered cloth seat trim				■		
PRO-4X embroidered cloth seat trim					■	
PRO-4X embroidered leather-appointed seats					P	
Leather-appointed seats						■
Heated front seats			VT			■
Leather-wrapped steering wheel			VT			■
White-faced gauges with satin chrome bezels				■	■	
Gauges with satin chrome bezels						■

Audio/Entertainment	S KC/CC 4x2/4x4	SV KC 4x2	SV V6 KC/CC 4x2/4x4	DR KC/CC 4x2	PRO-4X [®] KC/CC 4x4	SL CC 4x2/4x4
AM/FM audio system with four speakers	■ ⁹	■	■ ⁹	■ ⁹		
AM/FM audio system with six speakers	■ ⁴		VT ⁹ ■ ⁴	■ ⁴		
AM/FM/CD audio system with six speakers					■ ⁹	
Rockford Fosgate [®] -powered audio system with ten speakers, including subwoofer					■ ⁴	■
USB port ¹⁰	■	■	■	■	■	■
SiriusXM [®] Radio with 3-month complimentary trial access ⁵					■	■
Bluetooth [®] streaming audio ⁵	■	■	■	■	■	■

Safety/Security	S KC/CC 4x2/4x4	SV KC 4x2	SV V6 KC/CC 4x2/4x4	DR KC/CC 4x2	PRO-4X [®] KC/CC 4x4	SL CC 4x2/4x4
Nissan Advanced Air Bag System with dual-stage supplemental front air bags with seat belt and occupant classification sensors ²⁸	■	■	■	■	■	■
Driver and front passenger seat-mounted side-impact supplemental air bags ²⁸	■	■	■	■	■	■
Roof-mounted curtain supplemental air bags with rollover sensor for side-impact and rollover head protection for front and rear-seat outboard occupants ²⁸		■	■	■	■	■
Vehicle Dynamic Control (VDC) ¹³ with Traction Control System (TCS)	■	■	■	■	■	■
Active Brake Limited Slip (ABLS)	■	■	■	■	■	■
LATCH System (Lower Anchors and Tethers for Children)		■	■	■	■	■
Vehicle Security System			VT		■	■

■ Standard
□ Optional
W Part of S Work Truck Package
VT Part of SV Value Truck Package
ME Part of SV Midnight Edition Package
M Part of SV Moonroof Package
P Part of PRO-4X Premium Package

TOWING/PAYLOAD/MPG

Maximum Towing – Lbs. (Manual/Automatic Transmission) ²⁹					
	S	SV	DR	PRO-4X	SL
4-cylinder					
King Cab 4x2	3,800/3,790	3,810/3,790	–	–	–
V6 King Cab 4x2	–	–/6,720	–/6,690	–	–
V6 King Cab 4x4	–	–/6,510	–	–/6,450	–
V6 Crew Cab 4x2	6,640/6,620	–/6,640	–/6,620	–	–/6,480
V6 Crew Cab 4x4	–/6,370	6,380/6,380	–	6,320/6,290	–/6,240
V6 Crew Cab					
Long Bed 4x2	–	–/6,500	–	–	–
Long Bed 4x4	–	–/6,250	–	–	–

Capacities	King Cab	Crew Cab/Long Bed
Seating capacity	4	5
Interior passenger volume (cu. ft.)	92	107
Fuel tank (gals.)	21.1	21.1

Maximum Payload – Lbs. (Manual/Automatic Transmission)					
	S	SV	DR	PRO-4X	SL
4-cylinder					
King Cab 4x2	900/900	920/900	–	–	–
V6 King Cab 4x2	–	–/1,430	–/1,420	–	–
V6 King Cab 4x4	–	–/1,360	–	–/1,180	–
V6 Crew Cab 4x2	1,460/1,460	–/1,460	–/1,350	–	–/1,340
V6 Crew Cab 4x4	–/1,340	1,130/1,360	–	1,040/1,020	–/1,190
V6 Crew Cab					
Long Bed 4x2	–	–/1,360	–	–	–
Long Bed 4x4	–	–/1,220	–	–	–

2018 EPA Fuel Economy Estimates ³⁰		
City/Hwy/Combined MPG	Manual Transmission	Automatic Transmission
4-cylinder – 4x2 (4x4)	19/23/21 (N/A)	17/22/19 (N/A)
V6 – 4x2 (4x4)	16/22/19 (16/21/18)	16/23/19 (15/21/17)
Flexible Fuel Vehicle – 4x2 (4x4)	–	16/22/18 (15/21/17)

NISSAN ROADSIDE ASSISTANCE

Your peace of mind is on us. For 36 months or 36,000 miles, whichever comes first, your new Nissan is covered for the following:³¹

- Flat-tire changes
- Trip Interruption benefits
- Jump starts
- Vehicle lockouts
- Emergency fuel delivery

Follow Nissan on:



visit NissanUSA.com/frontier

PRINTED IN POLAND