



Nissan Intelligent Mobility moves you one step ahead. In cars that feel like an extension of you, helping you see more and sense more, reacting with you, and sometimes even for you. Nissan Intelligent Mobility is about a better future - moving us to a world that's safer, more sustainable, and exciting.



2020
FRONTIER®



¹Comparison based on 2020 Frontier® S vs. latest in-market *Ward's* Small Truck segment. Base models compared. Based on manufacturer's website. ²Maximum towing capacity when properly equipped. Maximum towing of up to: 6,720 lbs. for Frontier King Cab® 4x2; 6,510 lbs. for Frontier King Cab® 4x4; 6,640 for Frontier Crew Cab 4x2; 6,380 for Frontier Crew Cab 4x4; 6,500 for Frontier Crew Cab Long Bed 4x2; 6,250 for Frontier Crew Cab Long Bed 4x4. Towing capacity varies by configuration. See Nissan Towing Guide and Owner's Manual for additional information. ³Available feature. ⁴Feature availability is dependent on vehicle model, trim level, packaging and options. Trial included with vehicle purchase. Compatible connected device and wireless network may be required. Only use services/features and device when safe and legal to do so. Subject to GPS and wireless network availability and connection, and system/technology limitations. Text rates/data usage/subscription may apply. Some services and features are provided by and dependent on third party service providers and not Nissan and may be discontinued at any time. Trial periods and feature availability may be subject to change at any time and may be subject to early termination without notice. For more information, see dealer, owner's manual, or NissanUSA.com/connect/important-information. NissanConnect with Wi-Fi terms and conditions of subscriber agreement apply. Included with vehicle purchase 1 GB or 30 Day Trial on equipped new Nissan vehicles. If your Vehicle is outside the scope of the initial roadside assistance plan included with the purchase of your Vehicle that applies for a period of 36 months or 36,000 miles you will be responsible to the Service Provider for any additional charges incurred by receiving services. ⁵Payload varies by configuration. See Nissan Towing Guide and Owner's Manual for additional information. ⁶Fuel economy based on targeted 2020 EPA fuel economy estimates for 2020 Frontier. EPA data not available at time of publication. Targeted 2020 fuel economy 18 city MPG/24 hwy MPG/20 combined MPG (17 city MPG/23 hwy MPG/19 combined MPG for 4x4 models) estimates based on Nissan internal testing results, subject to EPA confirmation. Actual Mileage may vary with driving conditions. Use for comparison only. ⁷Available feature. *Ward's* Small Pickup Segmentation. 2019 Frontier® SV with Value Truck Package and above vs. latest in-market competitors. Comparison based on manufacturer websites. ⁸Cargo shown for display purposes only. Cargo and load capacity limited by weight and distribution. Always secure cargo. Heavy loading of the vehicle with cargo, especially on the roof, will affect the handling and stability of the vehicle. ⁹King Cab® only. ¹⁰Leather-appointed interior. ¹¹Driving is serious business and requires your full attention. If you have to use the connected device while driving, exercise extreme caution at all times so full attention may be given to vehicle operation. ¹²Use Hands Free Text Messaging when parked in a safe location. If you must use while driving, monitor traffic conditions and keep both hands on the steering wheel to prevent collisions. Compatible device required. Message and data rates may apply. ¹³RearView Monitor may not detect every object and does not eliminate blind spots or warn of moving objects. See Owner's Manual for safety information. ¹⁴Vehicle Dynamic Control cannot prevent collisions due to abrupt steering, carelessness, or dangerous driving technique. It should remain on when driving, except when freeing the vehicle from mud or snow. See Owner's Manual for safety information. ¹⁵Tire Pressure Monitoring System is not a substitute for regular tire pressure checks. See Owner's Manual for safety information. ¹⁶Never program while driving. GPS mapping may not be detailed in all areas or reflect current road status. ¹⁷The optional Rear Sonar System is a convenience, but is not a substitute for proper backing procedures. Always turn and check that it is safe to do so before backing up. May not detect every object behind you. ¹⁸Towing capability varies by configuration. See Nissan Towing Guide and Owner's Manual for additional information. ¹⁹Genuine Nissan Accessories are covered by Nissan's Limited Warranty on Genuine Nissan Replacement Parts, Genuine NISMO® S-Tune Parts, and Genuine Nissan Accessories for the longer of 12 months/12,000 miles (whichever occurs first) or the remaining period under the 3-year/36,000-mile (whichever occurs first) Nissan New Vehicle Limited Warranty. Terms and conditions apply. See dealer, Warranty Information Booklet, or parts.NissanUSA.com for details. ²⁰Availability may vary. Not warranted by Nissan. Nissan is not responsible for the safety or quality of the installation or alterations made by independent third party vendors. ²¹Not a genuine Nissan part/accessory. Not warranted by Nissan. Refer to product manufacturer for warranty details. Nissan Limited Warranty does not cover damages or failures to the vehicle caused by improper installation or alterations of any Nissan-approved accessory or component. Contact your dealer for details. ²²Tool Box Tray shown in photo is sold separately. See your Nissan dealer for more information. ²³King Cab, Crew Cab Long Bed, and Crew Cab 4x2 models only. ²⁴4x4 only. ²⁵Air bags are only a supplemental restraint system. Always wear your seat belt. Rear-facing child restraints should not be placed in the front-passenger's seat. All children 12 and under should ride in the rear seat properly secured in child restraints, booster seats, or seat belts according to their size. Air bags will only inflate in certain accidents. See Owner's Manual for safety information. ²⁶For a period of 36 months/36,000 miles from the date the vehicle is delivered to the first retail buyer or otherwise put into use, whichever is earlier. Bilstein® is a registered trademark of ThyssenKrupp Bilstein GmbH. Bluetooth® is a registered trademark of Bluetooth SIG, Inc. Dana® is a registered trademark of Dana Corporation. Facebook® is a registered trademark of Facebook, Inc. FullTilt and HoldUp are trademarks of Yakima Products, Inc. HomeLink® is a registered trademark of Genex Corporation. Rockford Fosgate® is a registered trademark of Rockford Corporation. Siri® and Siri® Eyes Free are registered trademarks of Apple, Inc. The Sirius®, XM®, and SiriusXM® names and all related marks and logos are trademarks of Sirius XM Radio Inc. All other trademarks are the property of their respective owners. Twitter® is a registered trademark of Twitter, Inc. Yakima® is a registered trademark of Yakima Products, Inc. YouTube is a registered trademark of Google LLC. This brochure is intended for general descriptive and informational purposes only. It is subject to change and does not constitute an offer, representation or warranty (express or implied) by Nissan North America, Inc. Interested parties should confirm the accuracy of any information in this brochure as it relates to a vehicle directly with Nissan North America, Inc., before relying on it to make a purchase decision. Nissan North America, Inc., reserves the right to make changes, at any time, without prior notice, in prices, colors, materials, equipment, specifications, and models and to discontinue models or equipment. Due to continuous product development and other pre- and post-production factors, actual vehicle, materials and specifications may vary from this brochure. Some vehicles shown with optional equipment. See the actual vehicle for complete accuracy. Availability and delivery times for particular models or equipment may vary. Specifications, options and accessories may differ in Hawaii, U.S. territories and other countries. For additional information on availability, options or accessories, see your Nissan dealer or contact Nissan North America, Inc. At NissanUSA.com, you'll find virtual product demonstrations, a way to "build your own Nissan," a dealer locator, and more information about key Nissan support services. Or if you'd prefer, call 1-800-NISSAN-3 for answers to specific questions about Frontier® or any other Nissan vehicle. The Nissan names, logos, product names, feature names, and slogans are trademarks owned by or licensed to Nissan Motor Co. Ltd. and/or its North American subsidiaries. Other trademarks and trade names are those of their respective owners. **Always wear your seat belt, and please drive responsibly.** ©2020 Nissan North America, Inc. '20 Frontier®. 201027-N-03/20-60K-CGI

NISSAN INTELLIGENT MOBILITY™

Introducing the most powerful Frontier® ever, with best-in-class standard horsepower and an all-new 9-speed automatic.¹ And that means more capability, work or play. On-road or off. So, load it up. Hitch it up – and make bigger plans. The 2020 Nissan Frontier.

310

HORSEPOWER

281

LB-FT OF TORQUE

UP TO
6,720

LBS. MAX TOWING²

Nissan Frontier® King Cab® SV 4x2 shown with optional equipment.



SURROUND YOURSELF WITH THE BEST

Whether you're on the job or on the go, Frontier® offers features that take things up a notch. Embrace a great-looking interior with standard Push Button Ignition, plus an available sporty, leather-wrapped steering wheel with cruise control and audio adjustments. Crank up the available ten-speaker Rockford Fosgate®-powered audio.³ Make and take calls with your hands on the wheel using the Bluetooth® Hands-free Phone System.⁴ And get things the way you like it with available Dual Zone Automatic Temperature Control.

Nissan Frontier® Crew Cab PRO-4X® shown in Graphite Leather.

PRO-4X

A FULL TRUCKLOAD OF CAPABILITY

Thanks to the all-new 310-hp, 3.8-L V6, the 2020 Frontier® features plenty of payload and a maximum towing capacity of up to 6,720 lbs. – making it a powerful choice for just about anything you need to do.^{2, 5}



Nissan Frontier® King Cab® SV 4x2 shown.

4X4 CAPABILITY

With the available 4x4 system, you can choose between 2WD, 4H, and 4LO, to help maximize fuel efficiency on the highway⁶ and get serious off-road capability on command. Available four-wheel Active Brake Limited Slip (ABLS), hill start assist and hill descent control help you conquer even the roughest terrain.



Bilstein® shocks

All-terrain tires

Electronic locking rear differential

Skid plates

BEST-IN-CLASS STANDARD POWER

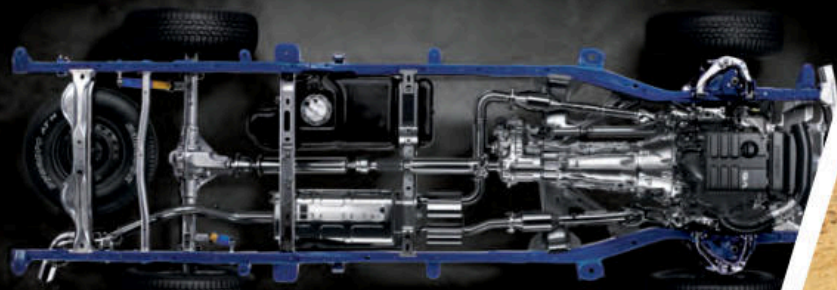
Pumping out a massive 310 hp, Frontier's standard V6 is a powerhouse. Featuring responsive direct injection, and backed by an all-new 9-speed automatic transmission. It's got performance you can depend on, day-in, day-out.¹

3.8-L V6 | **310** | **281**
ENGINE | HORSEPOWER | LB-FT OF TORQUE



FOUR WALLS ARE STRONGER THAN THREE

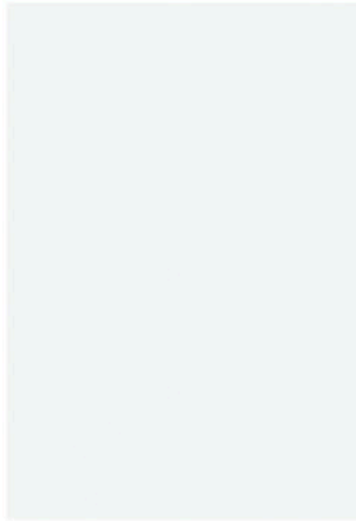
Because four walls are stronger than three, Frontier features a full-length, fully boxed ladder frame. The frame is built with welded crossmembers and features super-high-tensile-strength steel. Stronger than conventional steel for increased torsional stiffness, it helps deliver improved performance, on- and off-road.



PUT YOUR CARGO ON LOCKDOWN

When equipped with the available Utili-track® Channel System, Frontier offers the most bed rails in its class.^{7, 8} This system is fully equipped to help keep just about any type of cargo secured. Five channels, four cleats, and a lot of thought about how people really use their trucks have created a system that's simple, rugged, and offers near-infinite possibilities.⁸

CHOOSE YOUR COLOR



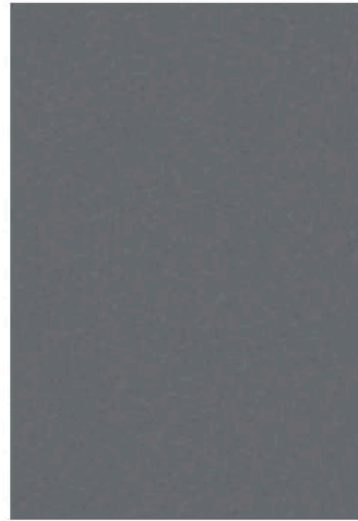
Glacier White QAK

	KING CAB		CREW CAB		
	S	SV	S	SV	PRO-4X
STEEL CLOTH	<input type="checkbox"/>		<input type="checkbox"/>	<input type="checkbox"/>	
GRAPHITE CLOTH		<input checked="" type="checkbox"/>			
GRAPHITE LEATHER					<input type="checkbox"/>



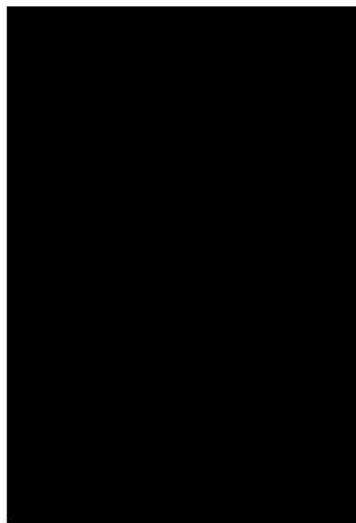
Brilliant Silver Metallic K23

	KING CAB		CREW CAB		
	S	SV	S	SV	PRO-4X
STEEL CLOTH	<input type="checkbox"/>		<input type="checkbox"/>	<input type="checkbox"/>	
GRAPHITE CLOTH	<input type="checkbox"/>	<input checked="" type="checkbox"/>			
GRAPHITE LEATHER					<input type="checkbox"/>



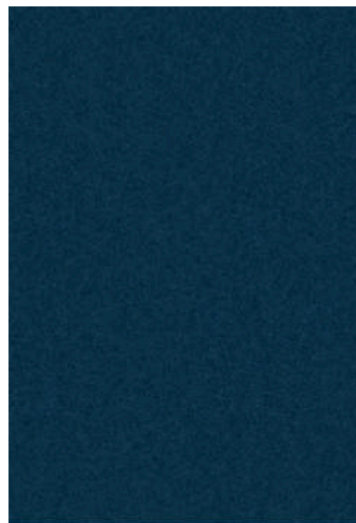
Gun Metallic KAD

	KING CAB		CREW CAB		
	S	SV	S	SV	PRO-4X
STEEL CLOTH				<input type="checkbox"/>	
GRAPHITE CLOTH		<input checked="" type="checkbox"/>			
GRAPHITE LEATHER					<input type="checkbox"/>



Magnetic Black Pearl G41

	KING CAB		CREW CAB		
	S	SV	S	SV	PRO-4X
STEEL CLOTH	<input type="checkbox"/>		<input type="checkbox"/>	<input type="checkbox"/>	
GRAPHITE CLOTH	<input checked="" type="checkbox"/>	<input checked="" type="checkbox"/>			
GRAPHITE LEATHER					<input type="checkbox"/>



Arctic Blue Metallic RBG

	KING CAB		CREW CAB		
	S	SV	S	SV	PRO-4X
STEEL CLOTH				<input type="checkbox"/>	
GRAPHITE CLOTH		<input checked="" type="checkbox"/>			
GRAPHITE LEATHER					<input type="checkbox"/>



Cayenne Red Metallic NAH

	KING CAB		CREW CAB		
	S	SV	S	SV	PRO-4X
STEEL CLOTH				<input type="checkbox"/>	
GRAPHITE CLOTH	<input checked="" type="checkbox"/>	<input checked="" type="checkbox"/>			
GRAPHITE LEATHER					<input type="checkbox"/>

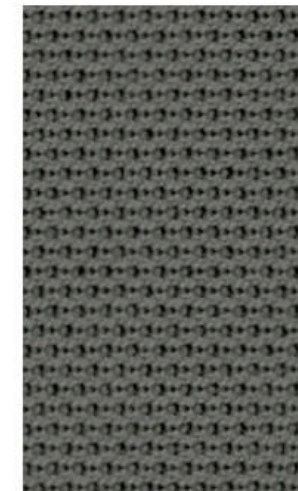
■ Standard

Nissan has taken care to ensure that the color swatches presented here are the closest possible representations of actual vehicle colors. Swatches may vary slightly due to the printing process and whether viewed in daylight, fluorescent or incandescent light. Please see the actual colors at your dealer.

CHOOSE YOUR INTERIOR



Nissan Frontier® Crew Cab PRO-4X® shown in Graphite Leather.



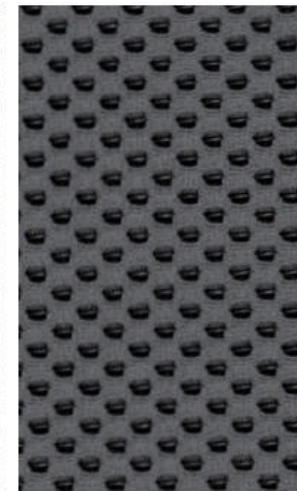
Steel Cloth
S King Cab®



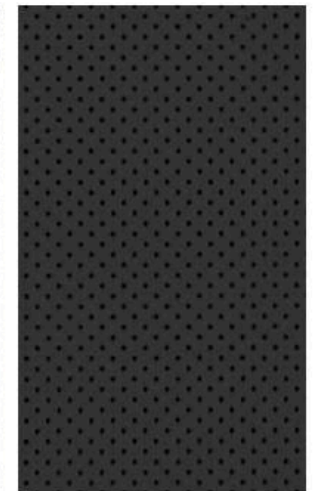
Graphite Cloth
S King Cab



Graphite Cloth
SV King Cab



Steel Cloth
S | SV Crew Cab



Graphite Leather[®]
PRO-4X Crew Cab

CHOOSE YOUR TRIM LEVEL

S KING CAB® CREW CAB

- 3.8-liter V6 Direct Injection Gasoline engine with 310 hp and 281 lb-ft of torque
- 9-speed automatic transmission
- 16" 6-spoke steel wheels
- Active Brake Limited Slip (ABLS)
- Full-length and fully boxed ladder frame
- 7" touch-screen display
- AM/FM audio system with four speakers
- USB port¹¹
- Bluetooth® Hands-free Phone System⁴
- Hands-free Text Messaging Assistant¹²
- Streaming Audio via Bluetooth⁴

Crew Cab adds:

- Four full-size doors with seating for five
- 60/40 Split flip-up rear bench seat
- AM/FM audio system with six speakers

4x4 adds:

- Switch-operated 2-speed transfer case
- Hill start assist
- Hill descent control

- Siri® Eyes Free⁴
- RearView Monitor¹³
- Illuminated steering wheel-mounted audio and cruise controls
- Remote Keyless Entry with Push Button Ignition
- Power door locks
- Power windows with driver's one-touch auto-down
- Rear access doors
- Second-row under-seat storage
- Vehicle Dynamic Control (VDC)¹⁴
- Tire Pressure Monitoring System (TPMS)¹⁵



SV KING CAB CREW CAB CREW CAB LONG BED

SV includes S equipment plus:

- 16" 6-split spoke aluminum-alloy wheels
- Body-color front bumper
- Chrome rear bumper
- Bed rail caps

Crew Cab adds:

- Four full-size doors with seating for five
- 60/40 Split flip-up rear bench seat
- AM/FM audio system with six speakers

4x4 adds:

- Switch-operated 2-speed transfer case
- Hill start assist
- Hill descent control

- Sliding rear window
- Dual power outside mirrors
- Sun visors with vanity mirrors and extension

- Front tow hook
- Splash guards

AVAILABLE PACKAGES:

Value Truck Package, Midnight Edition® Package (Crew Cab only), Special Edition Package (Crew Cab only)



PRO-4X® CREW CAB

- Bilstein® off-road performance shocks
- Electronic locking rear differential
- Skid plates
- 16" 6-spoke aluminum-alloy wheels with all-terrain tires
- Automatic on/off headlights
- Fog lights
- Utili-track® Channel System with four adjustable tie-down cleats⁸
- Factory-applied spray-on bedliner
- Satin chrome grille
- Body-color rear bumper and outside mirrors
- PRO-4X® bedside decal
- Heated outside mirrors
- Power sliding glass moonroof
- Roof rack with crossbars
- NissanConnect® 5.8" touch-screen display⁴
- Nissan Navigation System¹⁶
- NissanConnect® Mobile Apps⁴
- Nissan Voice Recognition¹⁶
- SiriusXM® Traffic and Travel Link® with 3-month trial access⁴

- SiriusXM® Radio with 3-month subscription included⁴
- Rear Sonar System¹⁷
- Dual Zone Automatic Temperature Control
- PRO-4X embroidered leather-appointed seats
- 8-way power adjustable driver's seat
- 4-way power adjustable front-passenger's seat
- Heated front seats
- Rear fold-down center armrest
- White-faced gauges with satin chrome bezels
- Auto-dimming rearview mirror with digital compass and outside temperature display
- Rockford Fosgate®-powered audio system with ten speakers, including subwoofer



CHOOSE YOUR PACKAGE



VALUE TRUCK PACKAGE | sv

Available on SV King Cab,[®] Crew Cab, and Crew Cab Long Bed

- Rear Sonar System¹⁷
- Dual Zone Automatic Temperature Control
- Utili-track[®] Channel System with four adjustable tie-down cleats[®]
- Spray-on bedliner
- Sliding bed extender
- Tow hitch receiver, Class IV¹⁸
- Fog lights
- Six speakers (King Cab only)
- Auto-dimming rearview mirror with digital compass and outside temperature display
- Heated front seats
- Vehicle Security System



SPECIAL EDITION | sv

Available on SV Crew Cab. Includes Value Truck Package contents

- 18" x 7.5" 6-spoke aluminum-alloy wheels
- Satin chrome grille
- Body-color rear bumper
- Special Edition decals
- Multi-functional trip computer

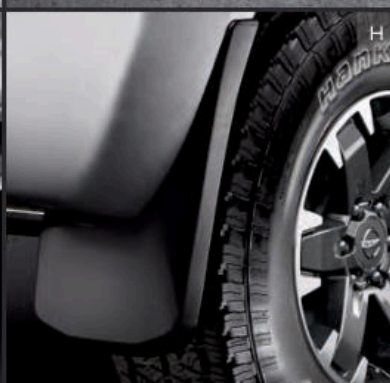
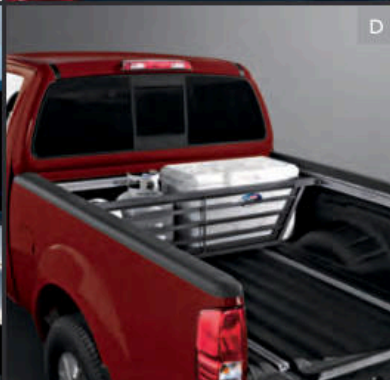
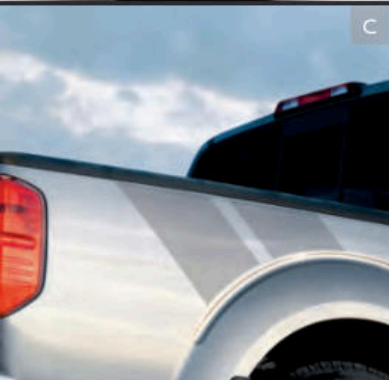
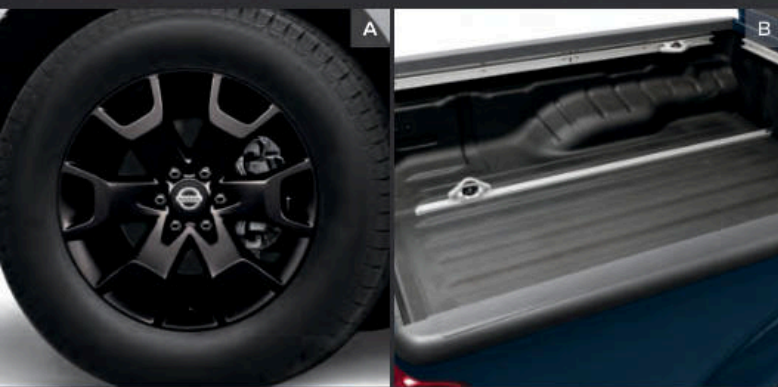


MIDNIGHT EDITION[®] | sv

Available Crew Cab. Includes Value Truck Package contents

- Exclusive Midnight Edition black 18" alloy wheels
- Black front grille
- Body-color rear bumper
- Black door handles and outside mirrors
- Black step rails
- Black Midnight Edition badging

CHOOSE YOUR ACCESSORIES



Every Genuine Nissan Accessory is custom-fit, custom-designed and durability-tested. Each one is also backed by Nissan's 3-year/36,000-mile (whichever occurs first) limited warranty (if installed by dealer at the time of purchase), and can be financed when installed by dealer at time of purchase.¹⁹

A. Midnight Edition® Wheels

Stand out in bold style.

B. Bed Rail Caps²⁰

Protect your bed rails from a thrashing.

C. Special Edition Graphics Package

Special Edition decals add flair to the exterior.

D. Sliding Bed Divider⁸

Divide and conquer. Works perfectly with Utili-track® system.

E. Hitch Ball Mount and Hitch Ball, Class III¹⁸

Ready for towing up to 5,000 lbs. (sold separately).

F. All-Season Floor Mats

Don't let the muck mess up your truck.

G. Body Side Moldings and Step Rails

Protect your doors and get a lift (sold separately).

H. Splash Guards

Show that puddle who's boss.

Additional Accessories:

- Midnight Edition® Carpeted Floor Mats
- Under-seat Storage Tray Nets⁸
- Frameless Prizm Rearview Mirror with Universal Remote
- Trailer Tow Harness¹⁸
- Hitch Cap¹⁸
- Yakima® FullTilt 4 Bike Rack^{8, 21}
- Yakima® HoldUp Bike Rack^{8, 21}
- And More

GENUINE NISSAN ACCESSORIES STEP UP YOUR GAME

For more information and to shop online for Frontier® Genuine Nissan Accessories, go to bit.ly/20frontier-estore



To see Genuine Nissan Accessories in action, go to bit.ly/20frontier_gnvideos

Nissan Frontier® Crew Cab PRO-4X® shown in Brilliant Silver Metallic with PRO-4X Graphics Package, Fog Lights (standard on PRO-4X), Tow Hook (standard on PRO-4X), and Splash Guards (standard on PRO-4X).

CHOOSE YOUR ACCESSORIES



Along with the other hard-working accessories listed below, you'll find a full line of available accessories designed specifically to work with the available unique system of channels and cleats in Frontier's incredibly versatile Utili-track® system.⁸

A. Weight-distributing Hitch Ball Mount, Class IV¹⁸
Tow big or go home.

B. PRO-4X® Carpeted Floor Mats
It's the ultimate Frontier. Treat it right.

C. Sliding Tool Box²²
Slide it forward when you're on the move. Slide it back for easy access on the job.

D. Clear Door Edge Protectors
Keep the edge of your doors looking like new.

E. Bedliner
Because your bed takes a beating.

F. Tow Hook
Extra strength for sticky situations.

G. Bed Tent
It's your truck! It's your campsite! It's both!

H. Sliding Bed Extender⁸
Ideal for the long haul.

For more information and to shop online for Frontier® Genuine Nissan Accessories, go to bit.ly/20frontier-estore



To see Genuine Nissan Accessories in action, go to bit.ly/20frontier_gnvideos

Nissan Frontier® Crew Cab PRO-4X® shown in Brilliant Silver Metallic with PRO-4X Graphics Package, Sliding Bed Extender,⁸ Sliding Tool Box,²² and Splash Guards (standard on PRO-4X).

SPECIFICATIONS

Engine	King Cab*		Crew Cab		
	S	SV	S	SV	PRO-4X*
3.8-liter Direct Injection Gasoline (DIG) DOHC 24-valve V6 engine	■	■	■	■	■
Horsepower – 310 hp @ 6,400 rpm	■	■	■	■	■
Torque – 281 lb-ft of torque @ 4,400 rpm	■	■	■	■	■

Drivetrain	King Cab*		Crew Cab		
9-speed automatic transmission	■	■	■	■	■
Dana® 44 rear axle					■
Switch-operated 2-speed transfer case 4x4 ²³	□	□	□	□	■
Electronic locking rear differential					■

Brakes	King Cab*		Crew Cab		
Front and rear vented disc brakes	■	■	■	■	■
4-wheel Anti-lock Braking System (ABS)	■	■	■	■	■
Electronic Brake force Distribution (EBD)	■	■	■	■	■

Suspension/Steering	King Cab*		Crew Cab		
Independent double-wishbone front suspension with stabilizer bar	■	■	■	■	■
Overslung multi-leaf rear suspension with solid axle	■	■	■	■	■
Bilstein® off-road performance shock absorbers					■
Engine-speed-sensitive power steering	■	■	■	■	■

Driver Assistance Technologies	King Cab*		Crew Cab		
Cruise control	■	■	■	■	■
RearView Monitor ¹³	■	■	■	■	■
Rear Sonar System ¹⁷		VT		VT	■
Hill start assist ²⁴	□	□	□	□	■
Hill descent control ²⁴	□	□	□	□	■
Vehicle Dynamic Control (VDC) with Traction Control System (TCS) ¹⁴	■	■	■	■	■
Active Brake Limited Slip (ABLS)	■	■	■	■	■

Wheels/Tires	King Cab*		Crew Cab		
16" x 7.0" 6-spoke steel wheels	■	■	■	■	■
16" x 7.0" 6-split spoke aluminum-alloy wheels		■		■	
16" x 7.0" 6-spoke aluminum-alloy wheels					■
18" x 7.5" 6-spoke aluminum-alloy wheels				SE	
Exclusive Midnight Edition® black 18" x 7.5" aluminum-alloy wheels				ME	
265/70R16 all-season tires	■	■	■	■	
265/75R16 all-terrain tires					■
265/60R18 all-season tires				SE/ME	

Chassis	King Cab*		Crew Cab		
Body-on-frame construction	■	■	■	■	■
Full-length, fully boxed ladder frame	■	■	■	■	■

Exterior Features	King Cab*		Crew Cab		
Skid plates – oil pan, fuel tank, 4x4 transfer case					■
Automatic on/off headlights					■
Fog lights		VT		VT	■
Roof rack with crossbars ⁸					■
Black step rails				ME	

■ Standard □ Optional VT Value Truck Package SE Special Edition Package

Exterior Features (continued)	King Cab*		Crew Cab		
Front tow hook ²⁴	□	□	□	□	■
Splash guards	□	□	□	□	■
Chrome grille	■	■	■	■	■
Satin chrome grille				SE	■
Black front grille				ME	
Upper body-color/lower black front bumper	■		■		
Body-color front bumper		■		■	
Chrome rear bumper		■		■	
Body-color rear bumper	■		■	SE/ME	■
Black door handles and mirrors	■	■	■	■	
Black door handles and body-color outside mirrors					■
Black Midnight Edition® badging				ME	
Dual power outside mirrors		■		■	■
Heated outside mirrors					■
Rear access doors	■	■			
Four full-sized doors			■	■	■
Power sliding glass moonroof with tilt feature					■
Sliding rear window		■		■	■
Rear privacy glass	■	■	■	■	■
Tow Hitch Receiver, Class IV ¹⁸		VT		VT	
Long Bed				□	
Utili-track® Channel System with four adjustable tie-down cleats ⁸		VT		VT	■
Factory-applied spray-on bedliner		VT		VT	■
Locking tailgate and cargo bed light	■	■	■	■	■
Tailgate spoiler	■	■	■	■	■
Bed rail caps		■		■	■
Sliding bed extender ⁸		VT		VT	
Front UV-reducing solar glass	■	■	■	■	■
Rear window defroster					■
Special Edition decals				SE	

Comfort/Convenience	King Cab*		Crew Cab		
Air conditioning	■	■	■	■	■
Dual Zone Automatic Temperature Control		VT		VT	■
In-cabin microfilter	■	■	■	■	■
Power door locks	■	■	■	■	■
Power windows with driver's one-touch auto-down	■	■	■	■	■
Remote Keyless Entry with Push Button Ignition	■	■	■	■	■
Variable intermittent windshield wipers	■	■	■	■	■
Auto-dimming rearview mirror with digital compass and outside temperature display		VT		VT	■
Front map lights	■	■	■	■	■
Two 12-volt DC power outlets ¹¹	■	■	■	■	■
Multi-functional trip computer				SE	
Sun visors with vanity mirrors and extension	■	■	■	■	■
Tilt steering column	■	■	■	■	■
Second-row under-seat storage	■	■	■	■	■
Overhead console with sunglasses storage	■	■	■	■	■
First-aid kit					■

ME Midnight Edition Package

Seating/Appointments	King Cab*		Crew Cab		
8-way power adjustable driver's seat					■
4-way power adjustable passenger's seat					■
Driver's seat adjustable lumbar support					■
Forward-facing rear flip-up seats	■	■			
60/40 Split flip-up rear bench seat			■	■	■
Rear fold-down center armrest					■
Cloth seat trim	■	■	■	■	
PRO-4X® embroidered leather-appointed seats					■
White contrast interior stitching					■
Heated front seats		VT		VT	■
Leather-wrapped steering wheel					■
Chrome vent accents					■
White-faced gauges with satin chrome bezels					■

Infotainment	King Cab*		Crew Cab		
7" touch-screen display	■	■	■	■	
NissanConnect® 5.8" touch-screen display ⁴					■
Nissan Navigation System ¹⁶					■
NissanConnect® Mobile Apps ⁴					■
SiriusXM® Traffic and Travel Link® with 3-month trial access ⁴					■
Nissan Voice Recognition ¹⁶					■
Siri® Eyes Free ⁴	■	■	■	■	■
Hands-free Text Messaging Assistant ¹²	■	■	■	■	■
Bluetooth® Hands-free Phone System ⁴	■	■	■	■	■
AM/FM audio system with four speakers	■	■			
AM/FM audio system with six speakers		VT		■	
Rockford Fosgate®-powered audio system with ten speakers, including subwoofers					■
Steering wheel-mounted audio controls	■	■	■	■	■
USB port ¹¹	■	■	■	■	■
SiriusXM® Radio with 3-month subscription included ⁴					■
Streaming Audio via Bluetooth® ⁴	■	■	■	■	■

Safety/Security	King Cab*		Crew Cab		
Nissan Advanced Air Bag System with dual-stage supplemental front air bags with seat belt and occupant-classification sensors ²⁵	■	■	■	■	■
Driver and front-passenger seat-mounted side-impact supplemental air bags ²⁵	■	■	■	■	■
Roof-mounted curtain supplemental air bags for side-impact with rollover sensor ²⁵	■	■	■	■	■
3-point ALR/ELR passenger seat belt (ELR for driver)	■	■	■	■	■
Front-seat Active Head Restraints	■	■	■	■	■
Front seat belts with pretensioners and load limiters	■	■	■	■	■
LATCH System (Lower Anchors and Tethers for Children)	■	■	■	■	■
Zone Body construction with front and rear crumple zones	■	■	■	■	■
Hood buckling creases and energy-absorbing steering column	■	■	■	■	■
Pipe-style steel side-door guard beams	■	■	■	■	■
Tire Pressure Monitoring System (TPMS) ¹⁵	■	■	■	■	■
Nissan Vehicle Immobilizer System					■
Vehicle Security System	■	■	■	■	■

CAPACITIES/TOWING/PAYLOAD/MPG

Capacities	King Cab	Crew Cab
Seating capacity	4	5
Interior passenger volume (cu. ft.)	92	107
Fuel tank (gals.)	21.1	21.1

Maximum Towing – Lbs.¹⁴

	S	SV	PRO-4X
King Cab 4x2	6,620	6,720	-
King Cab 4x4	6,370	6,510	-
Crew Cab 4x2	6,620	6,640	-
Crew Cab 4x4	6,370	6,380	6,290
Crew Cab Long Bed 4x2	-	6,500	-
Crew Cab Long Bed 4x4	-	6,250	-

Maximum Payload – Lbs.⁵

	S	SV	PRO-4X
King Cab 4x2	1,460	1,430	-
King Cab 4x4	1,340	1,360	-
Crew Cab 4x2	1,460	1,460	-
Crew Cab 4x4	1,340	1,360	1,020
Crew Cab Long Bed 4x2	-	1,360	-
Crew Cab Long Bed 4x4	-	1,220	-

2020 EPA Fuel Economy Estimates⁴

City/Hwy/Combined MPG	King Cab	Crew Cab
4x2 (4x4)	18/24/20	(17/23/19)

NISSAN ROADSIDE ASSISTANCE

Your peace of mind is on us. For 36 months or 36,000 miles, whichever comes first, your new Nissan is covered for the following:²⁶

- Flat-tire changes
- Trip Interruption benefits
- Jump starts
- Vehicle lockouts
- Emergency fuel delivery

Follow Nissan on:



visit NissanUSA.com/frontier

PRINTED IN POLAND