



Nissan Intelligent Mobility moves you one step ahead. In cars that feel like an extension of you, helping you see more and sense more, reacting with you, and sometimes even for you. Nissan Intelligent Mobility is about a better future - moving through life with greater confidence, excitement and connection to the world around you.



FRONTIER®

2023



¹Vehicle shown with third-party accessories. ²Up to 1,610 lbs. maximum payload for 2023 Frontier King Cab® 4x2, 1,440 lbs. for Frontier King Cab® 4x4, 1,480 lbs. for Frontier Crew Cab 4x2, 1,290 lbs. for Frontier Crew Cab 4x4, 1,360 lbs. for Frontier Crew Cab Long Bed 4x2, and 1,160 for Frontier Crew Cab Long Bed 4x4. Payload varies by configuration. See Nissan Towing Guide and Owner's Manual for additional information. Cargo and load capacity limited by weight and distribution. Always secure cargo. ³Up to 6,720 lbs. maximum towing for 2023 Frontier King Cab® 4x2, 6,510 lbs. for Frontier King Cab® 4x4, 6,570 lbs. for Frontier Crew Cab 4x2, 6,370 lbs. for Frontier Crew Cab 4x4, 6,460 lbs. for Frontier Crew Cab Long Bed 4x2, and 6,260 lbs. for Frontier Crew Cab Long Bed 4x4. Towing varies by configuration. See Nissan Towing Guide and Owner's Manual for additional information. Cargo and load capacity limited by weight and distribution. Always secure cargo. ⁴Available feature. ⁵Remote Engine Start System to be used only in accordance with laws or rules in effect in your vehicle's location. ⁶Zero Gravity seats for outboard passengers only. ⁷Intelligent Around View® Monitor cannot eliminate blind spots and may not detect every object. Driver should always turn and check surroundings before driving. See Owner's Manual for safety information. ⁸Availability of features vary by vehicle model year, model, trim level, packaging, and options. Please see Owner's Manual for important feature information. ⁹Nissan Safety Shield technologies can't prevent all collisions or warn in all situations. See Owner's Manual for important safety information. ¹⁰Automatic Emergency Braking with Pedestrian Detection cannot prevent all collisions and may not provide warning or braking in all conditions. Driver should monitor traffic conditions and brake as needed to prevent collisions. See Owner's Manual for safety information. ¹¹Rear Automatic Braking cannot prevent all collisions and may not provide warning or braking in all conditions. Driver should always turn and check surroundings before driving and brake as needed to prevent collisions. See Owner's Manual for safety information. ¹²Rear Cross Traffic Alert may not detect all vehicles. See Owner's Manual for safety information. ¹³Blind Spot Warning cannot prevent collisions and may not detect every object or warn in all situations. Driver should always turn and look before changing lanes. See Owner's Manual for safety information. ¹⁴Lane Departure Warning only operates when lane markings are able to be detected. See Owner's Manual for safety information. ¹⁵Intelligent Cruise Control uses limited braking and is not a collision avoidance or warning system. Driver should monitor traffic conditions and brake as needed to prevent collisions. See Owner's Manual for safety information. ¹⁶120-volt power outlet is intended only for use with compatible items. Please check specifications of wattage and amperage of items to be plugged in to determine compatibility. ¹⁷Cargo shown for display purposes only. Cargo and load capacity limited by weight and distribution. Always secure cargo. Heavy loading of the vehicle with cargo, especially on the roof, will affect the handling and stability of the vehicle. ¹⁸Available feature shown. Use feature only when safe and legal. Compatible device and service required. Subject to third party service availability. For more information, see NissanUSA.com/connect/legal. ¹⁹Certain Alexa functionality is dependent on smart home technology. Amazon Alexa Skills is a trademark of Amazon.com, Inc. or its affiliates. ²⁰Comparison based on latest in-market *Ward's* Small Truck segment. Driving is serious business and requires your full attention. If you have to use the feature while driving, exercise extreme caution at all time so full attention may be given to vehicle operation. Based on manufacturer's website. ²¹Driving is serious business and requires your full attention. If you have to use the connected device while driving, exercise extreme caution at all times so full attention may be given to vehicle operation. External device not included. ²²Extra cost option. ²³Leather appointments. ²⁴Intelligent Forward Collision Warning cannot prevent collisions. See Owner's Manual for safety information. ²⁵RearView Monitor may not detect every object and does not eliminate blind spots or warn of moving objects. See Owner's Manual for safety information. ²⁶Intelligent Driver Alertness cannot provide a warning in every situation. See Owner's Manual for safety information. ²⁷Vehicle Dynamic Control cannot prevent collisions due to abrupt steering, carelessness, or dangerous driving techniques. It should remain on when driving, except when freeing the vehicle from mud or snow. See Owner's Manual for safety information. ²⁸Information displayed is dependent on how vehicle is equipped. Driving is serious business and requires your full attention. If you have to use the feature while driving, exercise extreme caution at all times so full attention may be given to vehicle operation. ²⁹Never program while driving. GPS mapping may not be detailed in all areas or reflect current road status. ³⁰Use Hands Free Text Messaging when parked in a safe location. If you must use while driving, monitor traffic conditions and keep both hands on the steering wheel to prevent collisions. Compatible device required. Message and data rates may apply. ³¹Second-row under-seat storage not available on Frontier Crew Cab S models. ³²Tire Pressure Monitoring System is not a substitute for regular tire pressure checks. See Owner's Manual for safety information. ³³One tow hook for S trim, two tow hooks for SV, PRO-X,® and PRO-4X® trims. ³⁴Traffic Sign Recognition may not detect and read all traffic signs in all conditions. Driver should monitor all traffic signs and obey all traffic laws. See Owner's Manual for details. ³⁵Towing varies by configuration. See Nissan Towing Guide and Owner's Manual for additional information. Always secure cargo. ³⁶For complete information concerning warranty coverage, conditions, limitations, and exclusions, see your Nissan dealer and parts.NissanUSA.com for warranty details. ³⁷All non-Nissan Genuine Accessories are not warranted by Nissan. Refer to accessory product manufacturer for warranty details. Nissan limited warranty also does not cover damages or failures to the vehicle caused by improper installation or alterations. Damage or failures caused by use of non-Nissan-affiliated parts/accessories are also excluded from Nissan warranty coverage. Read the new vehicle limited warranty information booklet or contact your dealer for details. ³⁸Compatible smartphone required. Virtual Key to be used only in accordance with laws or rules in effect in your vehicle's location. Actual maximum distance for operation will vary depending on obstructions between compatible device and vehicle. ³⁹Vehicle shown is for illustrative purposes only. Not representative of brochure's model year/model. ⁴⁰Dual Camera Drive Recorder to be used only in accordance with any laws or rules in effect in your vehicle's location that may apply to audio or video recordings of drivers and passengers. ⁴¹King Cab, Crew Cab Long Bed, and Crew Cab 4x2 models only. ⁴²Brake Assist cannot prevent all collisions and may not provide warning or braking in all conditions. Driver should monitor traffic conditions and brake as needed to prevent collisions. See Owner's Manual for safety information. ⁴³Sonar System may not detect every object. Driver should always check surroundings before driving. See Owner's Manual for safety information. ⁴⁴4x4 only. ⁴⁵Rear Door Alert System does not detect people or cargo. Always check rear seat before exiting. See Owner's Manual for safety information. ⁴⁶Driving is serious business and requires your full attention. Do not operate any devices connected to the power outlets while driving. ⁴⁷Air bags are only a supplemental restraint system. Always wear your seat belt. Rear-facing child restraints should not be placed in the front-passenger's seat. All children 12 and under should ride in the rear seat properly secured in child restraints, booster seats, or seat belts according to their size. Air bags will only inflate in certain accidents. See Owner's Manual for safety information. ⁴⁸Interior passenger volume with moonroof is 98.9 cu. ft. ⁴⁹2023 EPA Fuel Economy Estimates: 18 City MPG / 24 Highway MPG / 20 Combined MPG for Frontier® 4x2, 17 City MPG / 22 Highway MPG / 19 Combined MPG for Frontier 4x4. Actual mileage may vary with driving conditions. Use for comparison only. ⁵⁰Roadside assistance coverage period varies by model-year model. For complete information concerning warranty coverage, conditions and exclusions, see your Nissan dealer and read the warranty information booklet for the model-year model. Amazon, Alexa and all related logos are trademarks of Amazon.com, Inc. or its affiliates. Apple CarPlay,® Apple Music,® Apple Watch,® and Siri® are registered trademarks of Apple, Inc. Bilstein® is a registered trademark of ThyssenKrupp Bilstein GmbH. Bluetooth® word mark and logos are owned by Bluetooth SIG, Inc., and any use of such marks by Nissan is under license. Facebook® is a registered trademark of Facebook, Inc. Fender® is a registered trademark of Fender Musical Instruments Corporation. Google, Android, Google Play, Android Auto and other marks are trademarks of Google LLC. Google Assistant is not available in certain languages and countries. To use Android Auto on your car display, you'll need an Android phone running Android 6 or higher, an active data plan, and the Android Auto app. HomeLink® is a registered trademark of Gentex Corporation. Instagram® is a registered trademark of Instagram, LLC. KICKER® is a registered trademark of Stillwater Designs. Qi® is a registered trademark of IEEE Industry Standards and Technology Organization. The Sirius,® XM,® and SiriusXM® names and all related marks and logos are trademarks of Sirius XM Radio Inc. All other trademarks are the property of their respective owners. Twitter® is a registered trademark of Twitter, Inc. Yakima® is a registered trademark of Yakima Products, Inc. YouTube® is a registered trademark of Google LLC. This brochure is intended for general descriptive and informational purposes only. It is subject to change and does not constitute an offer, representation or warranty (express or implied) by Nissan North America, Inc. Interested parties should confirm the accuracy of any information in this brochure as it relates to a vehicle directly with Nissan North America, Inc., before relying on it to make a purchase decision. Nissan North America, Inc., reserves the right to make changes, at any time, without prior notice, in prices, colors, materials, equipment, specifications, and models and to discontinue models or equipment. Due to continuous product development and other pre- and post-production factors, actual vehicle, materials and specifications may vary from this brochure. Some vehicles shown with optional equipment. See the actual vehicle for complete accuracy. Availability and delivery times for particular models or equipment may vary. Specifications, options and accessories may differ in Hawaii, U.S. territories and other countries. For additional information on availability, options or accessories, see your Nissan dealer or contact Nissan North America, Inc. At NissanUSA.com, you'll find virtual product demonstrations, a way to "build your own Nissan," a dealer locator, and more information about key Nissan support services. Or if you'd prefer, call 1-800-NISSAN-3 for answers to specific questions about Frontier or any other Nissan vehicle. The Nissan names, logos, product names, feature names, and slogans are trademarks owned by or licensed to Nissan Motor Co. Ltd. and/or its North American subsidiaries. Other trademarks and trade names are those of their respective owners. Always wear your seat belt, and please drive responsibly. ©2022 Nissan North America, Inc. 23 Frontier | 2311058-N | 22-100K-KS

Find your frontier

Plan your route. Pack your bags. Prep your gear. Your true domain awaits. It's time to go out and find it. Redefine your idea of freedom with capability that expands your realm and inspires new adventures. This is the new Nissan Frontier.®





Welcome to the great indoors

The destination is rocky, dusty, and sometimes rough. Getting there doesn't have to be. Start your Frontier* remotely,^{4,5} hop in, and you'll be cradled in a prewarmed or precooled interior that defies discomfort with standard Zero Gravity front seats⁶ and conquers cold with available Dual Zone Automatic Temperature Control and available heated front seats.

- Remote Engine Start System^{4,5}
- Heated Front Seats⁴
- Heated Steering Wheel⁴
- Dual Zone Automatic Temperature Control⁴
- Zero Gravity Front Seats⁶

Nissan Frontier* Crew Cab PRO-4X* shown in Charcoal Cloth with Lava Red Stitching.

NISSAN
INTELLIGENT
MOBILITY™

PRO-4X



Devoted to dirt

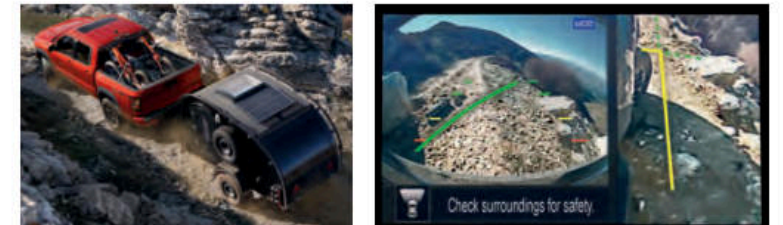
Between the straight lines and smooth surfaces of society lie all things jagged, dusty, rutted, sandy, muddy, and rocky. Excel in this environment with Frontier® PRO-4X.®

Off-road Upgrades With its all-terrain tires, Bilstein® off-road performance shocks, electronic locking rear differential, and skid plates, the PRO-4X checks all the boxes of a legit off-road performer.

Switch-operated 2-speed Transfer Case 4x4 The Frontier PRO-4X is a true 4x4, with three driver selectable modes — 2WD, 4H, and 4LO — so you can thrive in just about any environment you encounter.

Dedicated Off-road Display Keep track of pitch, roll, and key off-road functions, like 4x4 engagement and differential lock status, for a more confident day on the trail with the PRO-4X.

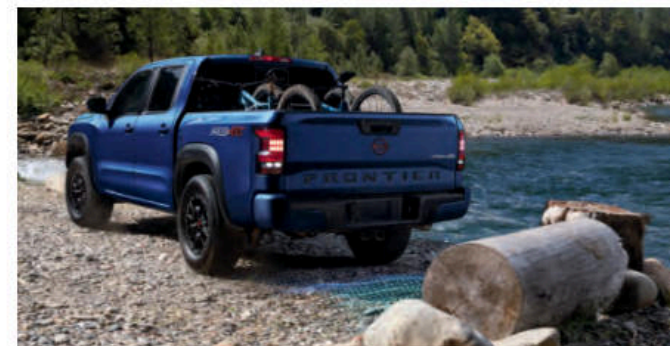
Intelligent Around View® Monitor Like a virtual spotter, available Intelligent Around View® Monitor with Off-Road Mode can show more of the trail around you to help you navigate tougher obstacles.⁷



Nissan Frontier® Crew Cab PRO-4X® shown in Tactical Green Metallic with up to 1,230 lbs. maximum payload capacity and up to 6,270 lbs. maximum towing capacity.^{2,3}

treadlightly!
.org

2023 Nissan Frontier® Crew Cab PRO-4X® shown in Cardinal Red TriCoat with up to 1,230 lbs. maximum payload capacity and up to 6,270 lbs. maximum towing capacity.^{2,3}



2023 Nissan Frontier® Crew Cab PRO-4X® shown in Deep Blue Pearl with up to 1,230 lbs. maximum payload capacity and up to 6,270 lbs. maximum towing capacity.^{2, 3}

Nissan Safety Shield® 360 and driver assist technologies

Frontier® backs you up with a wide assortment of standard and available safety features and driver assist technologies that can help you avoid accidents and give you more peace of mind when you're towing, hauling, and doing truck things.^{8, 9}

Standard Automatic Emergency Braking with Pedestrian Detection¹⁰

Available Rear Automatic Braking¹¹

Available Rear Cross Traffic Alert¹²

Available Blind Spot Warning¹³

Available Lane Departure Warning¹⁴

Available High Beam Assist

Available Intelligent Cruise Control¹⁵

310

Horsepower

281

lb-ft of Torque

1,610

lbs. max Payload²

6,720

lbs. max Towing³



Dream it. Hitch it. Tow it. Send it.

Frontier[®] does more than tow — it's a truck built to pull your dreams farther off the beaten path. Starting with Tow-Haul Mode, which optimizes your drive on the highway for heavier loads.⁴ Turn off the highway and Frontier attacks uneven, hilly terrain with features like hill start assist and hill descent control,⁴ and confidence-inspiring approach, breakover, and departure angles. When it's time to get your trailer of choice up that last sketchy hill, engage 4LO and the electronic locking rear differential for maximum traction.⁴

Tow-Haul Mode ⁴	Hill Start Assist	Hill Descent Control ⁴	Electronic Locking Rear Differential ⁴
----------------------------	-------------------	-----------------------------------	---



32.3° - Angle of Approach

19.6° - Breakover Angle

23.0° - Angle of Departure (without tow hitch receiver)

2023 Nissan Frontier[®] Crew Cab PRO-4X[®] shown in Boulder Gray Pearl with up to 1,230 lbs. maximum payload capacity and up to 6,270 lbs. maximum towing capacity.^{2, 3}

Truck bed 2.0

LED Bed Lighting Load up after dark with plenty of lighting to see what you're doing, thanks to Frontier's available LED under-rail bed lighting.

120-V Outlet Frontier's available bed-mounted 120-volt AC power outlet gives you the flexibility of a household power plug for electricity on the go.¹⁶

Dampened Tailgate | Spray-on Bedliner⁴ | 3 Utili-track[®] Channels^{4, 17}



2023 Nissan Crew Cab PRO-4X[®] shown in Baja Storm Metallic with up to 1,230 lbs. maximum payload capacity and up to 6,270 lbs. maximum towing capacity.^{2, 3}

Under-seat Storage Removable under-seat storage trays stash beneath the rear seats, so there's a space for everything. Plus you can flip up the rear-seat cushions for even more storage room.⁴

Two Cabs & Two Bed Lengths Configurations galore. Choose from either the workhorse King Cab,[®] which seats four with a 6-foot bed, or the versatile five-seater Crew Cab with either a 5-foot or 6-foot bed.¹⁷

**King Cab[®]
Bed — 6.0'**

Available on S and SV



**Crew Cab
Short Bed — 5.0'**

Available on S, SV, PRO-X[®]
and PRO-4X[®]



**Crew Cab
Long Bed — 6.0'**

Available on SV



Roughing it just got a lot less rough

Moonroof Let in more of the outdoors at the push of a button with the available power sliding glass moonroof, which also includes a tilt feature.

NissanConnect[®] Services Powered by SiriusXM Maintain a closer relationship with your Frontier[®] using NissanConnect[®] Services. You can access a variety of features through your vehicle and compatible smartphone and even use your voice to communicate with your vehicle through Amazon Alexa or Google Assistant.^{18, 19}

9-inch Display The available NissanConnect[®] 9" color touch-screen display is one of the largest in its class,²⁰ and invites you to tap, swipe, pinch, and zoom to your heart's content with a visual clarity and responsiveness you've never seen before in a Frontier.¹⁸

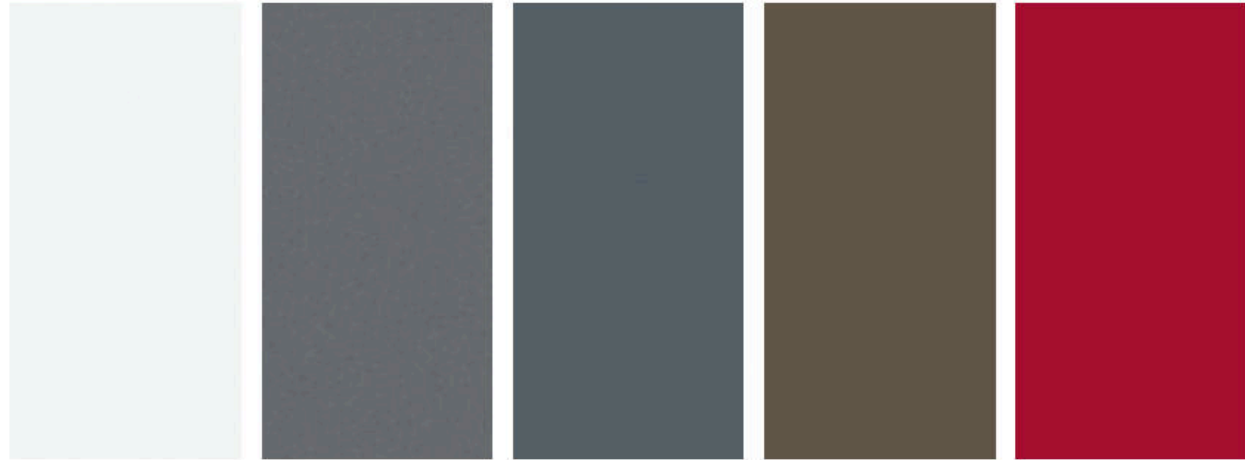
Wireless Charging Ditch the cord and place your Qi[®]-enabled smartphone on the available wireless charging pad located behind the shifter while Frontier does the rest.²¹

Front and Rear USB^{4, 21} | NissanConnect[®] with Wi-Fi Hotspot^{4, 18} | Fender[®] Premium Audio System⁴



Fender[®]
PREMIUM AUDIO

CHOOSE YOUR COLOR



Glacier White

Gun Metallic

Boulder Gray Pearl²²

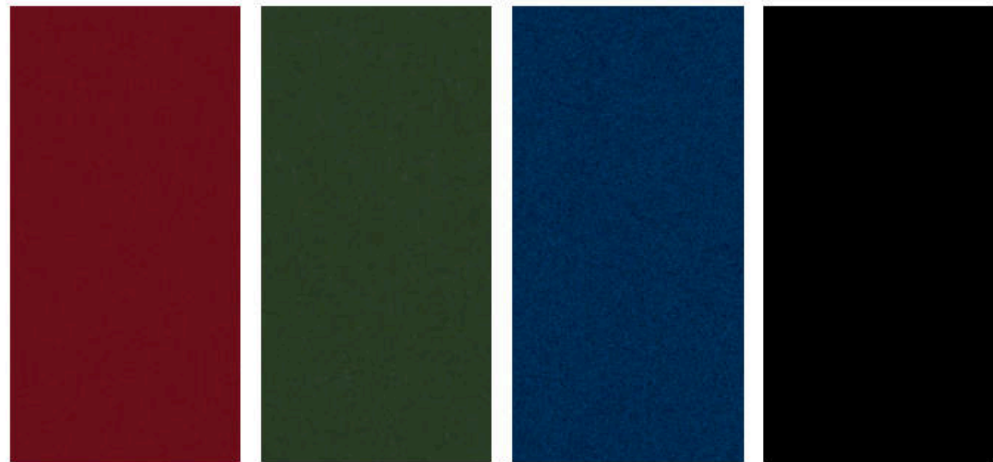
Baja Storm Metallic²²

Red Alert

	S	SV	PRO-X	PRO-4X
Charcoal Cloth	■			
Premium Charcoal Cloth		■		
Sandstone Cloth		CC		
Charcoal Cloth with Lava Red Stitching			■	■
Charcoal Leather with Contrast Stitching ²³		P	P	P

- Standard
- P Part of Premium Package
- CC Crew Cab only

Nissan has taken care to ensure that the color swatches presented here are the closest possible representations of actual vehicle colors. Swatches may vary slightly due to the printing process and whether viewed in daylight, fluorescent or incandescent light. Please see the actual colors at your dealer.



Cardinal Red TriCoat²²

Tactical Green Metallic²²

Deep Blue Pearl

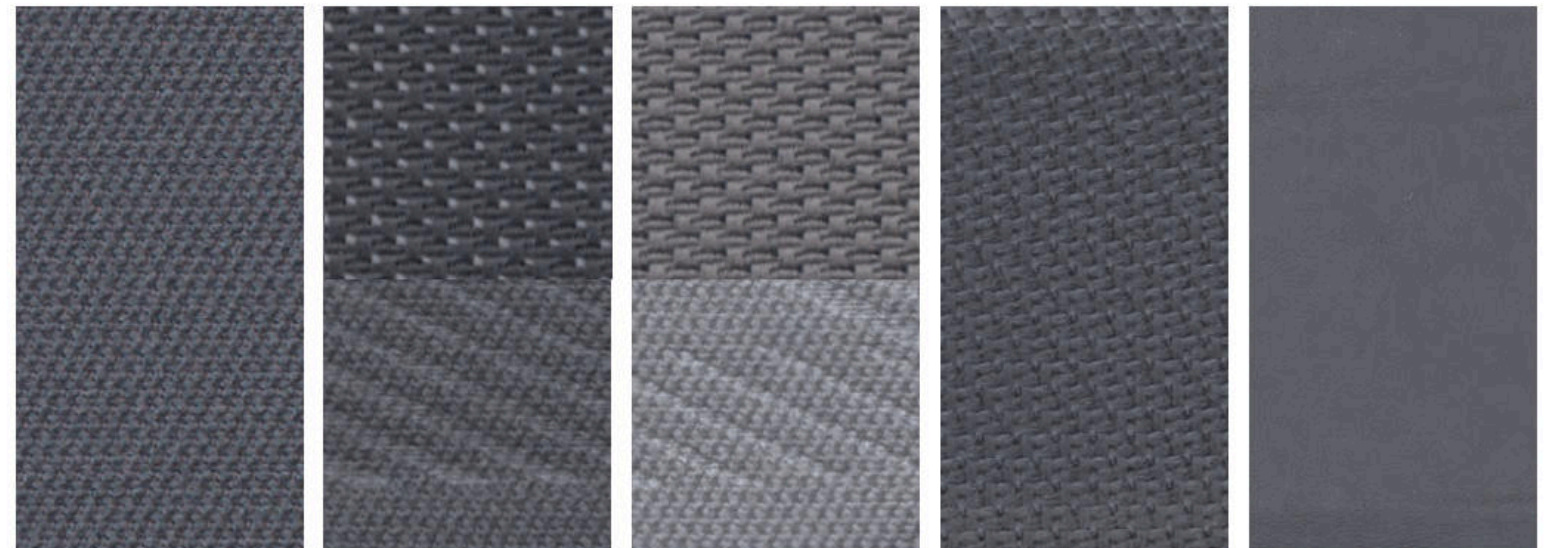
Super Black

	S	SV	PRO-X	PRO-4X
Charcoal Cloth				
Premium Charcoal Cloth		■		
Sandstone Cloth		CC		
Charcoal Cloth with Lava Red Stitching			■	■
Charcoal Leather with Contrast Stitching ²³		P	P	P

CHOOSE YOUR INTERIOR



Nissan Frontier® King Cab® SV 4x4 shown in Premium Charcoal Cloth.



Charcoal Cloth
S

Premium Charcoal Cloth
SV

Sandstone Cloth
SV Crew Cab

Charcoal Cloth with Lava Red
Stitching
PRO-X® | PRO-4X®

Charcoal Leather with
Contrast Stitching²³
SV | PRO-X | PRO-4X

CHOOSE YOUR TRIM LEVEL

S KING CAB® CREW CAB

- 3.8-liter V6 Direct Injection Gasoline engine with 310 hp and 281 lb-ft of torque
- 9-speed automatic transmission
- 16" Styled steel wheels
- Intelligent Forward Collision Warning²⁴
- Automatic Emergency Braking with Pedestrian Detection¹⁰
- RearView Monitor²⁵
- Intelligent Driver Alertness²⁶
- Vehicle Dynamic Control (VDC)²⁷
- Active Brake Limited Slip (ABLS)
- Full-length, fully boxed ladder frame
- 7" Advanced Drive-Assist™ Display²⁸
- NissanConnect® 8" color touch-screen display¹⁸
- Voice Recognition²⁹
- Apple CarPlay® integration¹⁸
- Android Auto™ compatibility¹⁸
- Hands-free Text Messaging Assistant³⁰
- Bluetooth® Hands-free Phone System¹⁸
- AM/FM audio system with four speakers
- Streaming Audio via Bluetooth®¹⁸
- One USB-A port and one USB-C port²¹
- SiriusXM Radio with 3-month subscription included¹⁸
- Remote keyless entry with push button ignition
- Power door locks
- Power windows with driver's one-touch auto-down
- Rear access doors
- Second-row under-seat storage³¹
- Tire Pressure Monitoring System (TPMS)³²

Crew Cab adds:

- Four full-size doors with seating for five
- 60/40-split flip-up rear bench seat
- Rear stabilizer bar
- Rear charge-only USB ports

4x4 adds:

- Switch-operated 2-speed transfer case
- Hill descent control
- Steel front skid plate
- Front tow hook³³



PRO-X® CREW CAB

Includes SV equipment plus:

- 17" Dark-finished aluminum-alloy wheels
- Bilstein® off-road performance shock absorbers
- LED signature headlights
- LED fog lights
- LED Daytime Running Lights
- Lava Red painted tow hooks³³
- Upper body-color/lower black front bumper
- Black overfenders
- PRO-X bed side decal
- NissanConnect® 9" color touch-screen display¹⁸
- Nissan Door to Door Navigation with Premium Traffic²⁹
- NissanConnect® with Wi-Fi Hotspot¹⁸
- NissanConnect® Services powered by SiriusXM with trial access to 5-year Select, 5-year Plus, and 6-month Premium packages¹⁸
- Wireless Apple CarPlay® integration¹⁸
- SiriusXM Travel Link with 3-month trial access¹⁸
- Nissan Intelligent Key® with Push Button Ignition
- Dual Zone Automatic Temperature Control
- PRO-X embroidered cloth seats
- Leather-wrapped steering wheel
- Leather-wrapped shift knob
- Lava Red contrast interior stitching and accents
- Sliding rear window
- Overhead console with sunglasses storage
- Sun visors with illuminated vanity mirrors and extensions
- LED front map lights and rear room lamp
- Tow-Haul Mode switch



SV KING CAB® CREW CAB CREW CAB LONG BED

SV includes S equipment plus:

- 17" 6-split spoke aluminum-alloy wheels
- Upper body-color/lower silver front bumper
- Body-color door handles
- Body-color rear bumper
- Dual power outside mirrors
- 6-way power driver's seat, with 2-way manual lumbar support
- AM/FM audio system with six speakers
- Chrome interior door handles
- Vehicle Security System

Crew Cab adds:

- Four full-size doors with seating for five
- 60/40-split flip-up rear bench seat
- Rear stabilizer bar
- Rear charge-only USB ports

4x4 adds:

- Switch-operated 2-speed transfer case
- Hill descent control
- Steel front skid plate
- Front tow hooks³³



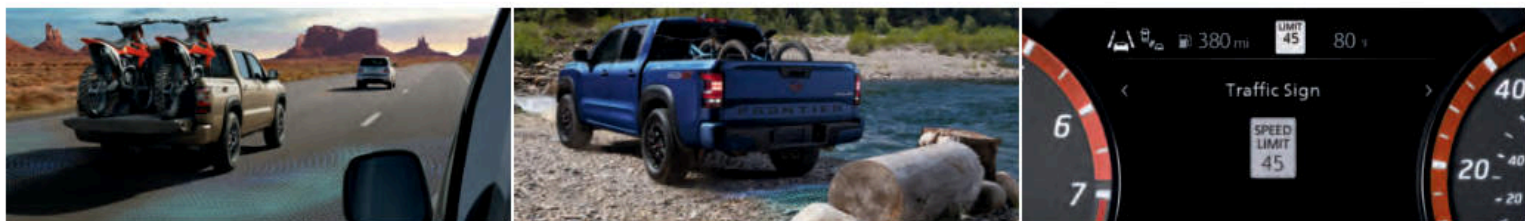
PRO-4X® CREW CAB

Includes PRO-X equipment plus:

- Switch-operated 2-speed transfer case
- Hill descent control
- Electronic locking rear differential
- Aluminum front skid plate
- Steel underbody skid plates (oil pan, fuel tank, 4x4 transfer case)
- PRO-4X bed side decal
- PRO-4X embroidered cloth seats
- PRO-4X carpeted floor mats



CHOOSE YOUR PACKAGE



TECHNOLOGY PACKAGE | S SV PRO-X® PRO-4X®

Available on King Cab,® Crew Cab, and Crew Cab Long Bed

- Lane Departure Warning¹⁴
- Blind Spot Warning¹³
- Rear Cross Traffic Alert¹²

- Rear Automatic Braking¹¹
- High Beam Assist
- Intelligent Cruise Control¹⁵
- Traffic Sign Recognition (PRO-X and PRO-4X only)³⁴



MIDNIGHT EDITION® | SV

Available on Crew Cab

- 17" Black-painted aluminum-alloy wheels
- LED signature headlights, Daytime Running Lights, and fog lights
- Black outside mirrors

- Black lower fascia
- Black front grille
- Black Midnight Edition badging
- Black interior accents



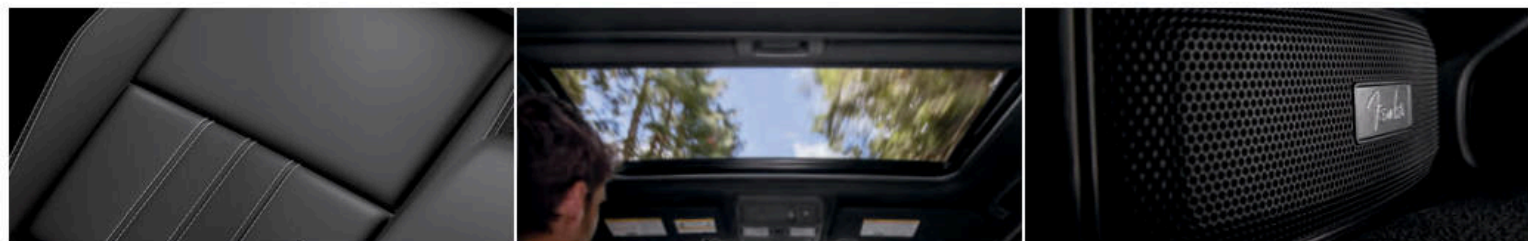
SV CONVENIENCE PACKAGE | SV

Available on King Cab and Crew Cab

- Factory-applied spray-on bedliner
- Utili-track® Channel System with two adjustable tie-down cleats¹⁷
- Bed-mounted 120-volt AC power outlet¹⁶
- 120-volt AC power outlet in rear center console¹⁶
- Heated outside mirrors
- Heated steering wheel
- Heated front seats
- LED under-rail bed lighting
- Remote Engine Start System with Intelligent Climate Control⁵

- Class IV tow hitch receiver with 7-pin wiring harness³⁵
- Fog lights
- Dual Zone Automatic Temperature Control
- Nissan Intelligent Key® with Push Button Ignition
- Overhead console with sunglasses storage
- Leather-wrapped shift knob
- Sliding rear window
- Tow-Haul Mode switch
- Illuminated locking glove box with damper

SV Convenience Package is not available on Crew Cab Long Bed.



SV PREMIUM PACKAGE | SV

Available on Crew Cab

- Fender® premium audio system with 10 speakers, including subwoofers
- Leather-appointed seats
- Auto-dimming rearview mirror

- HomeLink® Universal Transceiver
- LED front map lights and rear room lamp
- LED signature headlights
- LED fog lights
- Power sliding glass moonroof with tilt feature

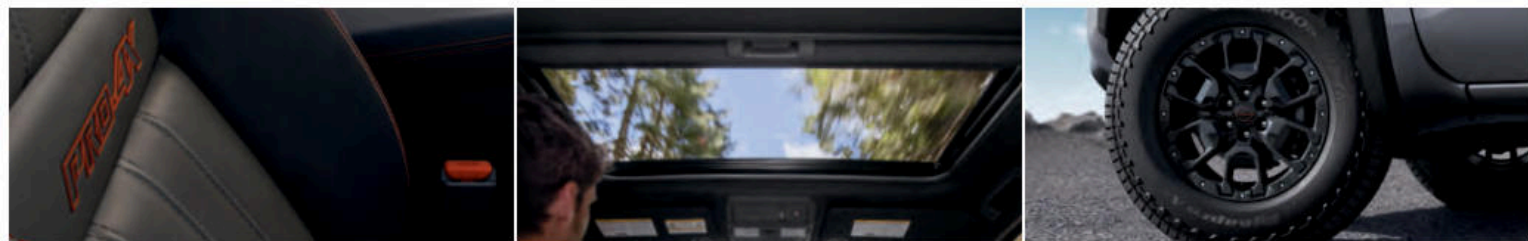


PRO CONVENIENCE PACKAGE | PRO-X® PRO-4X®

Available on Crew Cab

- Factory-applied spray-on bedliner
- Utili-track® Channel System with two adjustable tie-down cleats¹⁷
- Bed-mounted 120-volt AC power outlet¹⁶
- 120-volt AC power outlet in rear center console¹⁶
- Heated outside mirrors
- Heated steering wheel

- Heated front seats
- LED under-rail bed lighting
- Remote Engine Start System with Intelligent Climate Control⁵
- Class IV tow hitch receiver with 4-pin/7-pin wiring harness³⁵
- Intelligent Around View® Monitor (PRO-X)⁷
- Intelligent Around View® Monitor with Off-Road Mode (PRO-4X)⁷
- Wireless charger²¹



PRO PREMIUM PACKAGE | PRO-X® PRO-4X®

Available on Crew Cab

- 17" Beadlock-style aluminum-alloy wheels
- Fender® premium audio system with 10 speakers, including subwoofers

- Leather-appointed seats
- Auto-dimming rearview mirror
- HomeLink® Universal Transceiver
- Power sliding glass moonroof with tilt feature

NISSAN FRONTIER® ACCESSORIES

Ramp it up

Every Genuine Nissan Accessory is custom-fit, custom-designed, and durability-tested. Each one is backed by Nissan's 3-year/36,000-mile (whichever occurs first) limited warranty (if installed by dealer at the time of new vehicle purchase) and can be financed when installed by dealer at time of new vehicle purchase.³⁶ Affiliated Yakima® accessories are not warranted by Nissan. Refer to product manufacturer for warranty details. Nissan Limited Warranty does not cover damages or failures to the vehicle caused by improper installation or alterations of any Nissan approved accessory or component. Contact your dealer/retailer for details.³⁷

For more information and to shop online for Frontier® Genuine Nissan Accessories, go to bit.ly/23Frontier-Accys



Rear/Left: **Nissan Frontier® Crew Cab® PRO-4X®** shown in Boulder Gray Pearl with 17" Beadlock-Style Aluminum-Alloy Wheels (standard on PRO-4X with Premium Package), Sport Bar, Hood Wind Deflector, Hood Graphic, Side-Window Deflectors, Off-Road Step Rails, and PRO-4X Mud Flaps.

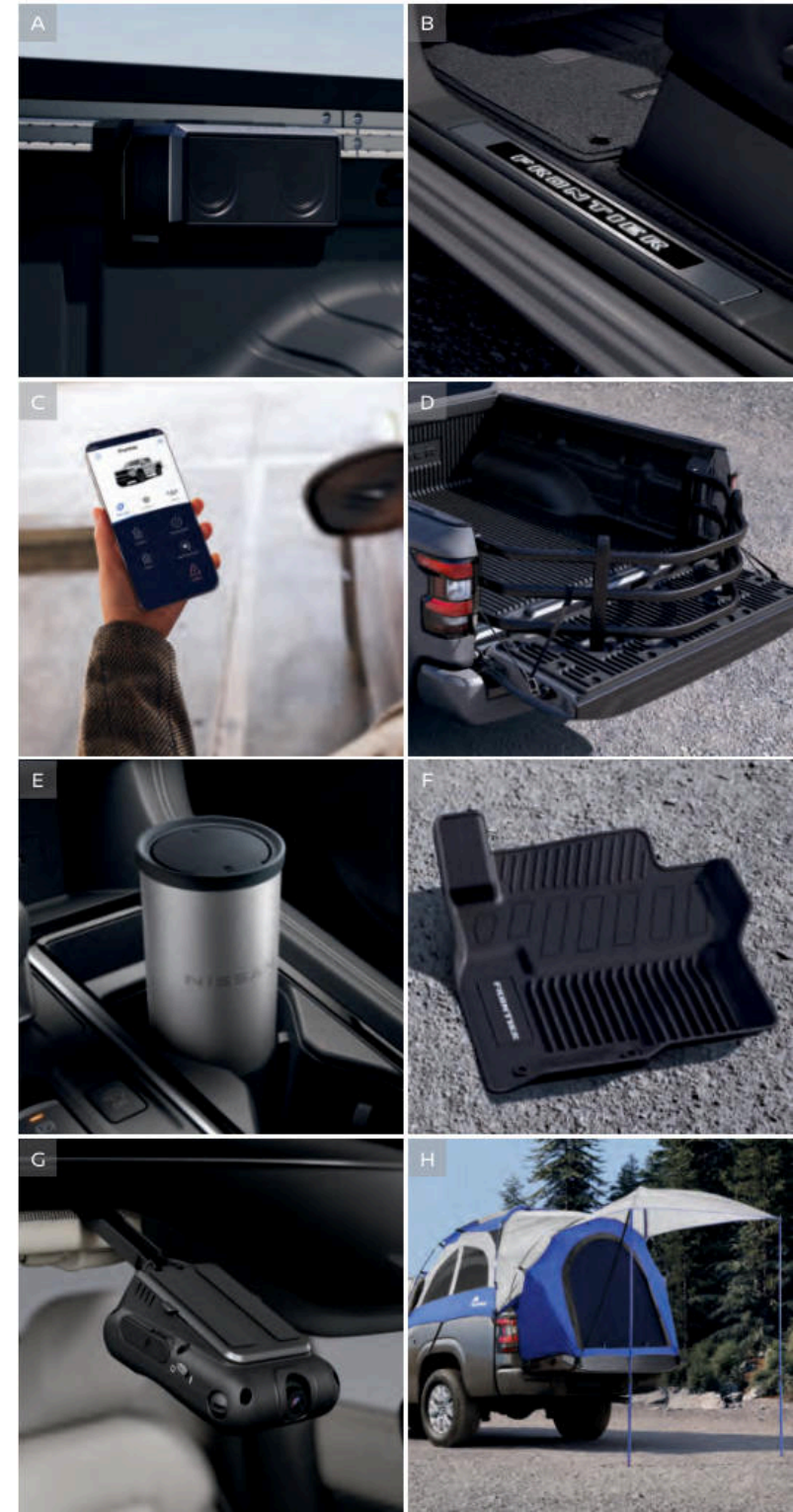
Front/Right: **Nissan Frontier King Cab® SV 4x4** shown in Cardinal Red TriCoat with 17" Aluminum-Alloy Wheels, Sport Bar, Black Side Graphic, Side-Window Deflectors, Black Tube Step Rails, Splash Guards, Black Tailgate Logo Insert (3D Lettering), Bed Assist Grip, Bed Area Cargo Net, Rear Bumper Step, Class IV Tow Hitch Receiver,³⁵ Hitch Ball Mount,³⁵ Hitch Ball,³⁵ and Trailer Tow Harness (4-pin/7-pin).³⁵

CHOOSE YOUR ACCESSORIES

- A. Nissan Tailgate Audio by KICKER®**
Tailgate with your favorite soundtrack.
- B. Illuminated Kick Plates**
Illumination and style that greets you on entry.
- C. Virtual Key³⁸**
Use your compatible smartphone or Apple Watch® to lock/unlock and start your Frontier. You can even share this access with family and friends.
- D. Sliding Bed Extender¹⁷**
Give your bed more capacity, with Utili-track® adjustability.
- E. Trash Bin³⁹**
Tidy up your space with this handy, removable trash bin.
- F. All-Season Floor Mats — High Wall Liners**
Don't let the muck mess up your truck.
- G. Dual Camera Drive Recorder^{39, 40}**
Catch what's happening outside and inside your Frontier.
- H. Bed Tent**
Convert your truck bed into a cozy, custom tent that sleeps two.

Additional Accessories:

- Mud Flaps
- Carpeted Floor Mats
- PRO-4X® Illuminated Kick Plates
- Interior Door Scuff Protection
- Fixed Bed Extender¹⁷
- Clear Hood Protector
- Rear Underseat Storage
- Security Impact Sensor
- Frameless Auto-Dimming Rearview Mirror w/ Universal Remote
- Weight-Distributing Hitch Ball Mount, Class IV (includes Class IV Hitch Ball)³⁵
- Tube Step Rails
- Remote Engine Start⁵
- Affiliated: Yakima® RidgeBack 4 — Hitch Mount Bike Rack^{17, 37}
- Affiliated: Yakima® HoldUp 2 — Hitch Mount Bike Rack^{17, 37}
- Off-Road Adventure Kit
- Adventure Medic Kit
- And More



SPECIFICATIONS

Engine	King Cab*		Crew Cab			
	S	SV	S	SV	PRO-X ¹	PRO-4X ²
3.8-liter Direct Injection Gasoline (DIG) DOHC 24-valve V6 engine Horsepower – 310 hp @ 6,400 rpm Torque – 281 lb-ft of torque @ 4,400 rpm	■	■	■	■	■	■

Drivetrain						
9-speed automatic transmission	■	■	■	■	■	■
Switch-operated 2-speed transfer case 4x4 ⁴¹	□	□	□	□	■	■
Electronic locking rear differential						■
Tow-Haul Mode switch		C1		C1/LB	■	■

Brakes						
Front and rear vented disc brakes	■	■	■	■	■	■
4-wheel Anti-lock Braking System (ABS)	■	■	■	■	■	■
Electronic Brake force Distribution (EBD)	■	■	■	■	■	■
Brake Assist ⁴²	■	■	■	■	■	■

Suspension/Steering						
Independent double-wishbone front suspension with stabilizer bar	■	■	■	■	■	■
Overslung multi-leaf rear suspension with solid axle	■	■	■	■	■	■
Rear stabilizer bar			■	■	■	■
Bilstein® off-road performance shock absorbers				■	■	■

Driver Assistance Technologies						
Cruise control	■	■	■	■	■	■
Intelligent Cruise Control ¹⁵	T	T	T	T	T	T
Intelligent Forward Collision Warning ²⁴	■	■	■	■	■	■
Automatic Emergency Braking with Pedestrian Detection ¹⁰	■	■	■	■	■	■
Lane Departure Warning ¹⁴	T	T	T	T	T	T
Blind Spot Warning ¹³	T	T	T	T	T	T
Rear Cross Traffic Alert ¹²	T	T	T	T	T	T
RearView Monitor ²⁵	■	■	■	■	■	■
Intelligent Around View® Monitor ⁷				C2		
Intelligent Around View® Monitor with Off-Road Mode ⁷						C2
Rear Sonar System ⁴³	T	T	T	T	T	T
Rear Automatic Braking ¹¹	T	T	T	T	T	T
High Beam Assist	T	T	T	T	T	T
Hill start assist ⁴⁴	■	■	■	■	■	■
Hill descent control ⁴⁴	□	□	□	□		■
Vehicle Dynamic Control (VDC) with Traction Control System (TCS) ²⁷	■	■	■	■	■	■
Active Brake Limited Slip (ABLS)	■	■	■	■	■	■
Trailer Sway Control ³⁵	■	■	■	■	■	■
Intelligent Driver Alertness ²⁶	■	■	■	■	■	■
Traffic Sign Recognition ³⁴					T	T

Wheels/Tires						
16" Styled steel wheels	■	■	■	■	■	■
17" 6-split spoke aluminum-alloy wheels		■		■		
17" Black-painted aluminum-alloy wheels				ME		
17" Dark-finished aluminum-alloy wheels				■	■	
17" Beadlock-style aluminum-alloy wheels				P2	P2	

■ Standard T Technology Package ME Midnight Edition Package P1 SV Premium Package LB Crew Cab Long Bed
□ Optional C1 SV Convenience Package C2 PRO Convenience Package P2 PRO Premium Package

Wheels/Tires (continued)	King Cab*		Crew Cab			
	S	SV	S	SV	PRO-X ¹	PRO-4X ²
265/70R16 all-season tires	■		■			
265/65R17 all-season tires		■		■		
265/70R17 all-terrain tires					■	■

Chassis						
Body-on-frame construction	■	■	■	■	■	■
Full-length, fully boxed ladder frame	■	■	■	■	■	■

Exterior Features						
Front skid plate	■	■	■	■	■	■
Skid plates — oil pan, fuel tank, 4x4 transfer case	■	■	■	■	■	■
Intelligent Auto Headlights	■	■	■	■	■	■
Fog lights		C1		C1/LB		
LED signature headlights, LED Daytime Running Lights, and LED fog lights				P1/ME		■
LED taillights	■	■	■	■	■	■
Front tow hooks ³³	□	□	□	□	■	■
Black front grille	■	■	■	ME		
Upper body-color/lower black front bumper	■	■	■	ME		
Upper body-color/lower silver front bumper	■	■	■			
Body-color rear bumper	■	■	■	■	■	■
Black overfenders						■
Black outside mirrors	■	■	■	ME		
Body-color door handles and outside mirrors	■	■	■	■	■	■
Dual power outside mirrors	■	■	■	■	■	■
Heated outside mirrors		C1		C1/LB	C2	C2
Black Midnight Edition® badging				ME		
Rear access doors	■	■				
Four full-size doors			■	■	■	■
Power sliding glass moonroof with tilt feature				P1	P2	P2
Sliding rear window		C1		C1/LB	■	■
Class IV tow hitch receiver with wiring harness ³⁵		C1		C1/LB	C2	C2
Long Bed				LB		
Utili-track® Channel System with two adjustable tie-down cleats ¹⁷		C1		C1/LB	C2	C2
Factory-applied spray-on bedliner		C1		C1/LB	C2	C2
Bed-mounted 120-volt AC power outlet ¹⁶		C1		C1/LB	C2	C2
Dampened assist tailgate	■	■	■	■	■	■
Overhead cargo bed lights	■	■	■	■	■	■
Bed rail caps and tailgate spoiler	■	■	■	■	■	■
LED under-rail bed lighting		C1		C1/LB	C2	C2

Comfort/Convenience						
Air conditioning	■	■	■	■	■	■
Dual Zone Automatic Temperature Control		C1		C1/LB		
In-cabin microfilter	■	■	■	■	■	■
Rear Door Alert ⁴⁵	■	■	■	■	■	■
Remote keyless entry with push button ignition	■	■	■	■	■	■
Nissan Intelligent Key® with Push Button Ignition		C1		C1/LB		■
Remote Engine Start System with Intelligent Climate Control ⁵		C1		C1/LB	C2	C2
Auto-dimming rearview mirror with HomeLink® Universal Transceiver				P1	P2	P2
Illuminated locking glove box with damper		C1		C1/LB	■	■

Comfort/Convenience (continued)	King Cab*		Crew Cab			
	S	SV	S	SV	PRO-X ¹	PRO-4X ²
Front map lights and rear room lamp	■	■	■	■		
LED front map lights and rear room lamp				P1	■	■
12-volt DC power outlet ⁴⁶	■	■	■	■	■	■
120-volt AC power outlet in rear center console ¹⁶		C1		C1/LB	C2	C2
Sun visors with illuminated vanity mirrors and extensions				■	■	
Second-row under-seat storage				■	■	■
Overhead console with sunglasses storage		C1		C1/LB	■	■

Seating/Appointments						
6-way manually adjustable driver's seat	■		■			
6-way power adjustable driver's seat, with 2-way manual lumbar support		■		■	■	■
4-way manually adjustable passenger's seat	■	■	■	■	■	■
Forward-facing rear flip-up seats	■	■				
60/40-split flip-up rear bench seat			■	■	■	■
Cloth seat trim						■
PRO embroidered cloth seats					■	■
Leather-appointed seats				P1	P2	P2
Heated front seats		C1		C1/LB	C2	C2
Leather-wrapped steering wheel		C1		C1/LB	■	■
Heated steering wheel		C1		C1/LB	C2	C2
Leather-wrapped shift knob		C1		C1/LB	■	■
Black interior accents				ME		
Lava Red interior accents				■	■	
PRO-4X® carpeted floor mats						■

Infotainment						
7" Advanced Drive-Assist™ Display ²⁸	■	■	■	■	■	■
NissanConnect® 8" color touch-screen display ¹⁸	■	■	■	■	■	■
NissanConnect® 9" color touch-screen display ¹⁸				■	■	
Nissan Door to Door Navigation with Premium Traffic ²⁹				■	■	
NissanConnect® Services powered by SiriusXM with trial access to 5-year Select, 5-year Plus, and 6-month Premium packages ¹⁸				■	■	
Apple CarPlay® Integration ¹⁸	■	■	■	■	■	■
Wireless Apple CarPlay® Integration ¹⁸				■	■	
Android Auto™ compatibility ¹⁸	■	■	■	■	■	■
NissanConnect® with Wi-Fi Hotspot ¹⁸				■	■	
SiriusXM Traffic and Travel Link with 3-month trial access ¹⁸				■	■	
AM/FM audio system with four speakers	■	■				
AM/FM audio system with six speakers		■		■	■	■
Fender® premium audio system with 10 speakers, including subwoofers				P1	P2	P2
One USB-A port and one USB-C port ²¹	■	■				
Two USB-A ports and two USB-C ports ²¹				■	■	■
Wireless charger ²¹					C2	C2
SiriusXM Radio with 3-month subscription included ¹⁸	■	■	■	■	■	■

Safety						
Nissan Advanced Air Bag System with dual-stage supplemental front air bags with seat-belt and occupant-classification sensors ⁴⁷	■	■	■	■	■	■
Driver and front-passenger seat-mounted side-impact supplemental air bags ⁴⁷	■	■	■	■	■	■

Safety (continued)	King Cab*		Crew Cab			
	S	SV	S	SV	PRO-X ¹	PRO-4X ²
Roof-mounted curtain supplemental air bags for side-impact with rollover sensor ⁴⁷	■	■	■	■	■	■
Driver and front-passenger supplemental knee air bags ⁴⁷	■	■	■	■	■	■
LATCH System (Lower Anchors and Tethers for Children)	■	■	■	■	■	■
Zone Body construction with front and rear crumple zones	■	■	■	■	■	■
Tire Pressure Monitoring System (TPMS) ³²	■	■	■	■	■	■

CAPACITIES/TOWING/PAYLOAD/MPG

Capacities	King Cab	Crew Cab
Seating capacity	4	5
Interior passenger volume (cu. ft.)	85.6	100.1 ⁴⁸
Fuel tank (gals.)	21	21

Maximum Towing – Lbs. ¹				
	S	SV	PRO-X	PRO-4X
King Cab 4x2	6,720	6,670	-	-
King Cab 4x4	6,510	6,470	-	-
Crew Cab 4x2	6,570	6,530	6,470	-
Crew Cab 4x4	6,370	6,330	-	6,270
Crew Cab Long Bed 4x2	-	6,460	-	-
Crew Cab Long Bed 4x4	-	6,260	-	-

Maximum Payload – Lbs. ²				
	S	SV	PRO-X	PRO-4X
King Cab 4x2	1,600	1,610	-	-
King Cab 4x4	1,410	1,440	-	-
Crew Cab 4x2	1,460	1,480	1,430	-
Crew Cab 4x4	1,260	1,290	-	1,230
Crew Cab Long Bed 4x2	-	1,360	-	-
Crew Cab Long Bed 4x4	-	1,160	-	-

2023 EPA Fuel Economy Estimates ⁴⁹	
City/Hwy/Combined mpg	
4x2 (4x4)	18/24/20 (17/22/19)

NISSAN ROADSIDE ASSISTANCE

Your peace of mind is on us. For 36 months or 36,000 miles, whichever comes first, your new Nissan is covered for the following.⁵⁰

- Flat-tire changes
- Trip Interruption benefits
- Jump starts
- Vehicle lockouts
- Emergency fuel delivery

Follow Nissan on:



visit [NissanUSA.com/frontier](https://www.nissanusa.com/frontier)

PRINTED IN USA



Sign up to get the latest on
Nissan vehicles, news, and events.

<https://www.nissanusa.com/brochures/request-brochure.html>