



FRONTIER®

2024



¹Remote Engine Start System to be used only in accordance with laws or rules in effect in your vehicle's location. ²Available feature. ³Extra cost option. ⁴Intelligent Around View® Monitor cannot eliminate blind spots and may not detect every object. Driver should always turn and check surroundings before driving. See Owner's Manual for safety information. ⁵Up to 1,620 lbs. maximum payload for 2024 Frontier King Cab® 4x2; 1,450 lbs. for Frontier King Cab® 4x4; 1,480 lbs. for Frontier Crew Cab 4x2; 1,310 lbs. for Frontier Crew Cab 4x4; 1,300 lbs. for Frontier Crew Cab Long Bed 4x2; and 1,100 for Frontier Crew Cab Long Bed 4x4. Payload varies by configuration. See Nissan Towing Guide and Owner's Manual for additional information. Cargo and load capacity limited by weight and distribution. Always secure cargo. ⁶Up to 6,640 lbs. maximum towing for 2024 Frontier King Cab® 4x2; 6,480 lbs. for Frontier King Cab® 4x4; 6,510 lbs. for Frontier Crew Cab 4x2; 6,350 lbs. for Frontier Crew Cab 4x4; 6,390 lbs. for Frontier Crew Cab Long Bed 4x2; and 6,240 lbs. for Frontier Crew Cab Long Bed 4x4. Towing varies by configuration. See Nissan Towing Guide and Owner's Manual for additional information. Cargo and load capacity limited by weight and distribution. Always secure cargo. ⁷Availability of features vary by vehicle model year, model, trim level, packaging, and options. Please see Owner's Manual for important feature information. ⁸Nissan Safety Shield technologies can't prevent all collisions or warn in all situations. See Owner's Manual for important safety information. ⁹Automatic Emergency Braking with Pedestrian Detection cannot prevent all collisions and may not provide warning or braking in all conditions. Driver should monitor traffic conditions and brake as needed to prevent collisions. See Owner's Manual for safety information. ¹⁰Rear Automatic Braking cannot prevent all collisions and may not provide warning or braking in all conditions. Driver should always turn and check surroundings before driving and brake as needed to prevent collisions. See Owner's Manual for safety information. ¹¹Rear Cross Traffic Alert may not detect all vehicles. See Owner's Manual for safety information. ¹²Blind Spot Warning cannot prevent collisions and may not detect every object or warn in all situations. Driver should always turn and look before changing lanes. See Owner's Manual for safety information. ¹³Lane Departure Warning only operates when lane markings are able to be detected. See Owner's Manual for safety information. ¹⁴Intelligent Cruise Control uses limited braking and is not a collision avoidance or warning system. Driver should monitor traffic conditions and brake as needed to prevent collisions. See Owner's Manual for safety information. ¹⁵Towing varies by configuration. See Nissan Towing Guide and Owner's Manual for additional information. Always secure cargo. ¹⁶120-volt power outlet is intended only for use with compatible items. Please check specifications of wattage and amperage of items to be plugged in to determine compatibility. ¹⁷Cargo shown for display purposes only. Cargo and load capacity limited by weight and distribution. Always secure cargo. Heavy loading of the vehicle with cargo, especially on the roof, will affect the handling and stability of the vehicle. ¹⁸Use feature only when safe and legal. Compatible device and service required. Subject to third party service availability. For more information, see [NissanUSA.com/connect/legal](https://www.nissanusa.com/connect/legal). ¹⁹Certain Alexa functionality is dependent on smart home technology. Amazon Alexa Skills is a trademark of Amazon.com, Inc. or its affiliates. ²⁰Driving is serious business and requires your full attention. If you have to use the connected device while driving, exercise extreme caution at all times so full attention may be given to vehicle operation. Smartphone or other external device not included. ²¹Leather appointments. ²²Intelligent Forward Collision Warning cannot prevent collisions. See Owner's Manual for safety information. ²³RearView Monitor may not detect every object and does not eliminate blind spots or warn of moving objects. See Owner's Manual for safety information. ²⁴Intelligent Driver Alertness cannot provide a warning in every situation. See Owner's Manual for safety information. ²⁵Vehicle Dynamic Control cannot prevent collisions due to abrupt steering, carelessness, or dangerous driving techniques. It should remain on when driving, except when freeing the vehicle from mud or snow. See Owner's Manual for safety information. ²⁶Information displayed is dependent on how vehicle is equipped. Driving is serious business and requires your full attention, if you have to use the feature while driving, exercise extreme caution at all times so full attention may be given to vehicle operation. ²⁷Never program while driving. GPS mapping may not be detailed in all areas or reflect current road status. ²⁸Use Hands Free Text Messaging when parked in a safe location. If you must use while driving, monitor traffic conditions and keep both hands on the steering wheel to prevent collisions. Compatible device required. Message and data rates may apply. ²⁹Second-row under-seat storage not available on Frontier Crew Cab S models. ³⁰Tire Pressure Monitoring System is not a substitute for regular tire pressure checks. See Owner's Manual for safety information. ³¹One tow hook for S trim; two tow hooks for SV, PRO-X,® PRO-4X® and SL trims. ³²Traffic Sign Recognition may not detect and read all traffic signs in all conditions. Driver should monitor all traffic signs and obey all traffic laws. See Owner's Manual for details. ³³2024 Frontier® Hardbody Edition has limited availability. Contact your local dealer for inventory information. ³⁴For complete information concerning warranty coverage, conditions, limitations, and exclusions, see your Nissan dealer, [parts.NissanUSA.com](https://www.nissanusa.com), or read your vehicle's Warranty Information Booklet. ³⁵All non-Nissan Genuine Accessories are not warranted by Nissan. Refer to accessory product manufacturer for warranty details. Nissan limited warranty also does not cover damages or failures to the vehicle caused by improper installation, improper alterations, or use of non-Nissan-affiliated parts/accessories. Contact your Nissan dealer or read your vehicle's Warranty Information Booklet for details. ³⁶Compatible smartphone required. Virtual Key to be used only in accordance with laws or rules in effect in your vehicle's location. Actual maximum distance for operation will vary depending on obstructions between compatible device and vehicle. ³⁷Only front kick plates illuminate. ³⁸Dual Camera Drive Recorder to be used only in accordance with any laws or rules in effect in your vehicle's location that may apply to audio or video recordings of drivers and passengers. ³⁹King Cab, Crew Cab Long Bed, and Crew Cab 4x2 models only. ⁴⁰Brake Assist cannot prevent all collisions and may not provide warning or braking in all conditions. Driver should monitor traffic conditions and brake as needed to prevent collisions. See Owner's Manual for safety information. ⁴¹Sonar System may not detect every object. Driver should always check surroundings before driving. See Owner's Manual for safety information. ⁴²4x4 only. ⁴³Rear Door Alert System does not detect people or cargo. Always check rear seat before exiting. See Owner's Manual for safety information. ⁴⁴Driving is serious business and requires your full attention. Do not operate any devices connected to the power outlets while driving. ⁴⁵Air bags are only a supplemental restraint system. Always wear your seat belt. Rear-facing child restraints should not be placed in the front-passenger's seat. All children 12 and under should ride in the rear seat properly secured in child restraints, booster seats, or seat belts according to their size. Air bags will only inflate in certain accidents. See Owner's Manual for safety information. ⁴⁶Interior passenger volume with moonroof is 98.9 cu. ft. ⁴⁷2024 EPA Fuel Economy Estimates: 18 City MPG / 24 Highway MPG / 21 Combined MPG for Frontier® 4x2, 18 City MPG / 23 Highway MPG / 20 Combined MPG for Frontier® 4x4, 18 City MPG / 22 Highway MPG / 19 Combined MPG for Frontier® PRO-4X 4x4. Actual mileage may vary with driving conditions. Use for comparison only. ⁴⁸Roadside assistance coverage period varies by model year/model. For complete information concerning warranty coverage, conditions and exclusions, see your Nissan dealer and read the warranty information booklet for the model year/model. Amazon, Alexa, Echo, and all related marks are trademarks of Amazon.com, Inc. or its affiliates. Android, YouTube, Android Auto, and other marks are trademarks of Google LLC. To use Android Auto on your car display, you'll need an Android phone running Android 8 or higher, an active data plan, and the Android Auto app. Apple CarPlay®, Apple Watch®, and Siri® are registered trademarks of Apple, Inc. Bilstein® is a registered trademark of ThyssenKrupp Bilstein GmbH. Bluetooth® word mark and logos are owned by Bluetooth SIG, Inc. and any use of such marks by Nissan is under license. Facebook® is a registered trademark of Facebook, Inc. Fender® is a registered trademark of Fender Musical Instruments Corporation. HomeLink® is a registered trademark of Genetex Corporation. Instagram® is a registered trademark of Instagram, LLC. KICKER® is a registered trademark of Stillwater Designs. Qi® is a registered trademark of IEEE Industry Standards and Technology Organization. The Sirius®, XM®, and SiriusXM® names and all related marks and logos are trademarks of Sirius XM Radio Inc. All other trademarks are the property of their respective owners. Twitter® is a registered trademark of Twitter, Inc. Yakima® is a registered trademark of Yakima Products, Inc. This brochure is intended for general descriptive and informational purposes only. It is subject to change and does not constitute an offer, representation or warranty (express or implied) by Nissan North America, Inc. Interested parties should confirm the accuracy of any information in this brochure as it relates to a vehicle directly with Nissan North America, Inc., before relying on it to make a purchase decision. Nissan North America, Inc., reserves the right to make changes, at any time, without prior notice, in prices, colors, materials, equipment, specifications, and models and to discontinue models or equipment. Due to continuous product development and other pre- and post-production factors, actual vehicle, materials and specifications may vary from this brochure. Some vehicles shown with optional equipment. See the actual vehicle for complete accuracy. Availability and delivery times for particular models or equipment may vary. Specifications, options and accessories may differ in Hawaii, U.S. territories and other countries. For additional information on availability, options or accessories, see your Nissan dealer or contact Nissan North America, Inc. At [NissanUSA.com](https://www.nissanusa.com), you'll find virtual product demonstrations, a way to build your own Nissan, a dealer locator, and more information about key Nissan support services. Or if you'd prefer, call 1-800-NISSAN-3 for answers to specific questions about Frontier or any other Nissan vehicle. The Nissan names, logos, product names, feature names, and slogans are trademarks owned by or licensed to Nissan Motor Co. Ltd. and/or its North American subsidiaries. Other trademarks and trade names are those of their respective owners. Always wear your seat belt, and please drive responsibly. © 2024 Nissan North America, Inc. 24 Frontier® 2477571-N-08/23-1001-KSL

Get your freedom fix

Adventures don't wait. Neither should you. Outsmart and out-tough the next challenge, whether you're overlanding, towing,¹⁵ hauling, commuting, or road-tripping. Frontier makes epic the norm with trail-ready toughness, standard advanced safety features, and Nissan's tried-and-true available switch-activated four-wheel drive. Feel free to feel free.



Nissan Frontier® Crew Cab SV 4x4 Hardbody Edition³³ (limited availability) shown in Red Alert with standard equipment accessories: Off-Road Rails, Black Exhaust Finisher, Sport Bar, Hood Graphic, 4x4 Side Graphic, Tailgate Graphic, and 4x4 Mud Flaps.



Every adventure needs a command center

The destination is rocky, dusty, and sometimes rough. Getting there doesn't have to be. With the available Remote Engine Start System, start your Frontier® remotely,¹ hop in, and you'll be cradled in a prewarmed or pre-cooled interior that defies discomfort with standard Zero Gravity front seats and conquers cold with available Dual Zone Automatic Temperature Control and available heated front seats.

- Remote Engine Start System^{1,2}
- Heated Front Seats²
- Heated Steering Wheel²
- Dual Zone Automatic Temperature Control²
- Zero Gravity Front Seats

Nissan Frontier® Crew Cab PRO-4X® shown in Charcoal Cloth with Lava Red Stitching.

PRO-4X



Like a beast

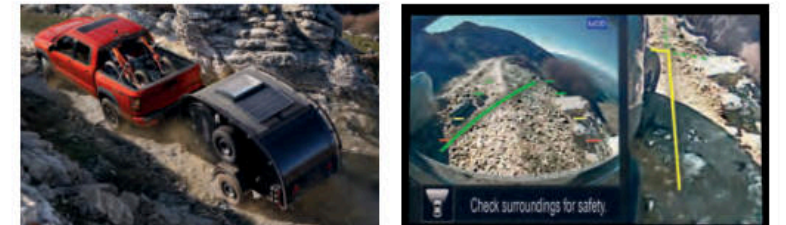
Between the straight lines and smooth surfaces of society lie all things jagged, dusty, rutted, sandy, muddy, and rocky. Excel in this environment with Frontier® PRO-4X.®

Off-road Upgrades With its all-terrain tires, Bilstein® off-road performance shocks, electronic locking rear differential, and skid plates, the PRO-4X checks all the boxes of a legit off-road performer.

Switch-operated 2-speed Transfer Case 4x4 The Frontier PRO-4X is a true 4x4 with three driver-selectable modes — 2WD, 4H, and 4LO — so you can thrive in just about any environment you encounter.

Dedicated Off-road Display Keep track of pitch, roll, and key off-road functions, like 4x4 engagement and differential lock status, for a more confident day on the trail with the PRO-4X.

Intelligent Around View® Monitor Like a virtual spotter, the available Intelligent Around View® Monitor with Off-Road Mode can show more of the trail around you to help you navigate tougher obstacles.⁴



Nissan Frontier® Crew Cab PRO-4X® shown in Cardinal Red TriCoat³ with up to 1,220 lbs. maximum payload capacity and up to 6,170 lbs. maximum towing capacity.^{5,6}



Nissan Safety Shield® 360 and driver assist technologies

Frontier® has your back with a wide assortment of standard and available safety features and driver assist technologies that can help you avoid accidents and have more peace of mind when you're towing, hauling, and doing truck things.^{7,8}

Standard Automatic Emergency Braking with Pedestrian Detection⁹

Available Rear Automatic Braking¹⁰

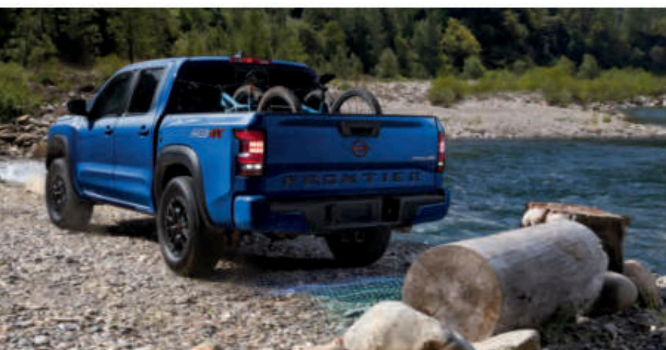
Available Rear Cross Traffic Alert¹¹

Available Blind Spot Warning¹²

Available Lane Departure Warning¹³

Available High Beam Assist

Available Intelligent Cruise Control¹⁴



Nissan Frontier® Crew Cab PRO-4X® shown in Bluestone Pearl³ with up to 1,220 lbs. maximum payload capacity.⁵

Nissan Frontier® Crew Cab PRO-4X® shown in Glacier White with up to 1,220 lbs. maximum payload capacity.⁵

310

Horsepower

281

lb-ft of Torque

1,620

lbs. max Payload⁵

6,640

lbs. max Towing⁶

Overlanding is breaking free and finding your spot

Frontier[®] is a truck built to pull your dreams farther off the beaten path, starting with Tow-Haul Mode,² which optimizes your drive on the highway for heavier loads.² Turn off the highway and Frontier can help you overcome uneven, hilly terrain with features like hill start assist, hill descent control,² and confidence-inspiring approach, breakover, and departure angles. When it's time to get your trailer of choice up that last hill, engage 4LO and the electronic locking rear differential for maximum traction.^{2, 15}

Tow-Haul Mode ²	Hill Start Assist	Hill Descent Control ²	Electronic Locking Rear Differential ²
----------------------------	-------------------	-----------------------------------	---



32.3° - Angle of Approach

19.6° - Breakover Angle

23.0° - Angle of Departure (without tow hitch receiver)

Nissan Frontier[®] Crew Cab PRO-4X[®] shown in Boulder Gray Pearl¹ with up to 1,220 lbs. maximum payload capacity and up to 6,170 lbs. maximum towing capacity.^{5, 6}

Truck bed 2.0

LED Bed Lighting Load up after dark with plenty of lighting to see what you're doing, thanks to Frontier's available LED under-rail bed lighting.

120-V Outlet Frontier's available bed-mounted 120-volt AC power outlet gives you the flexibility of a household power plug for electricity on the go.¹⁶

Dampened Tailgate | Spray-on Bedliner² | 3 Utili-track[®] Channels^{2,17}



Nissan Frontier[®] Crew Cab PRO-4X[®] shown in Tactical Green Metallic² with up to 1,220 lbs. maximum payload capacity.⁵

Under-seat Storage Removable under-seat storage trays stash beneath the rear seats, so there's a space for what you need. Plus you can flip up the rear-seat cushions for even more storage room.²

Two Cabs & Two Bed Lengths Configurations galore. Choose from either the workhorse King Cab,[®] which seats four with a 6-foot bed, or the versatile five-seater Crew Cab with either a 5-foot or 6-foot bed.¹⁷

King Cab[®]
Bed — 6.0'

Available on S and SV



Crew Cab
Short Bed — 5.0'

Available on S, SV, PRO-X[®]
PRO-4X[®] and SL



Crew Cab
Long Bed — 6.0'

Available on SV



It's okay to live ruggedly...selectively

Moonroof Let in more of the outdoors at the push of a button with the available power sliding glass moonroof, which also includes a tilt feature.

NissanConnect[®] Services Powered by SiriusXM Maintain a closer relationship with your Frontier[®] using NissanConnect[®] Services.² You can access a variety of features through your vehicle and compatible smartphone and even use your voice to communicate with your vehicle through Amazon Alexa.^{18, 19, 20}

9-inch Display The available NissanConnect[®] 9" color touch-screen display invites you to tap, swipe, pinch, and zoom to your heart's content with exceptional visual clarity and responsiveness.¹⁸

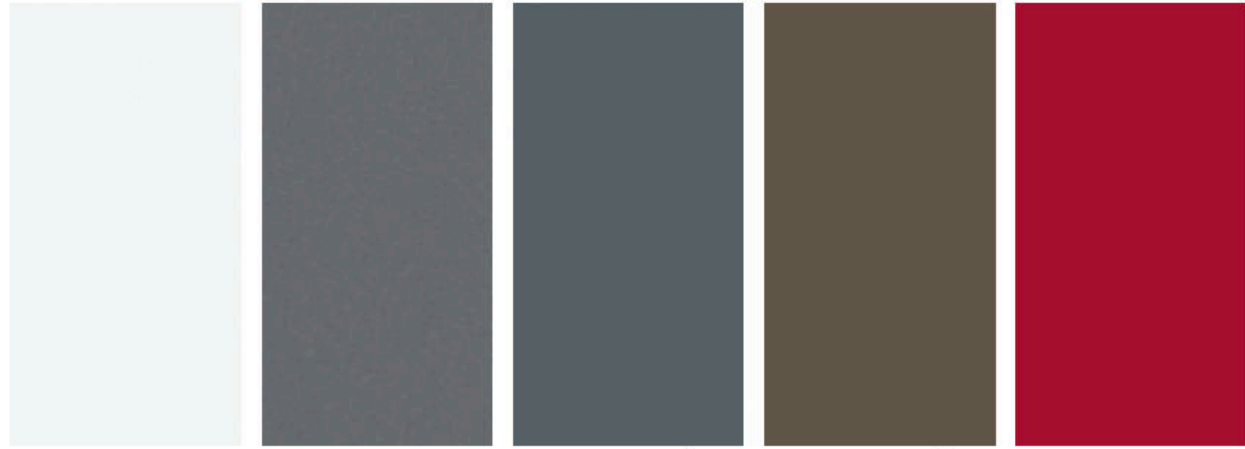
Wireless Charging Ditch the cord and place your Qi[®]-enabled smartphone on the available wireless charging pad located behind the shifter while Frontier does the rest.²⁰

Front and Rear USB^{2, 20} | NissanConnect[®] with Wi-Fi Hotspot^{2, 18} | Fender[®] Premium Audio System²



Fender[®]
PREMIUM AUDIO

CHOOSE YOUR COLOR



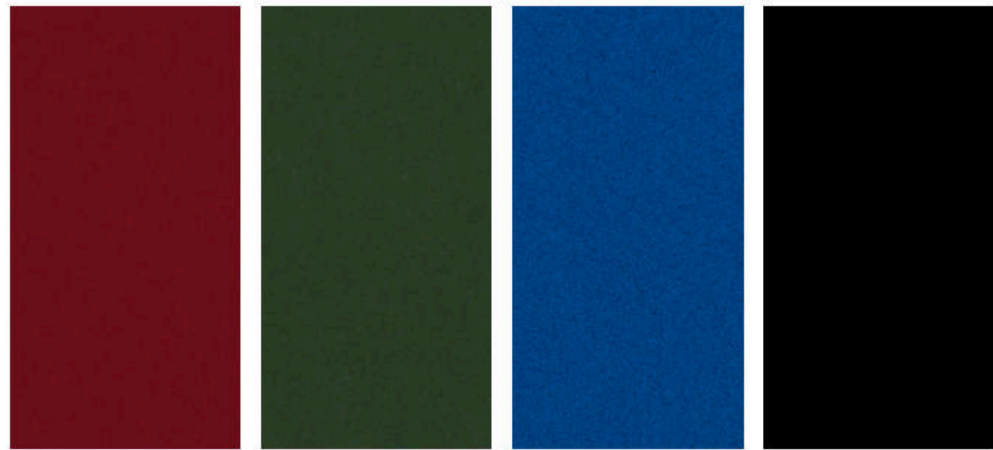
Glacier White Gun Metallic Boulder Gray Pearl³ Baja Storm Metallic³ Red Alert

S SV PRO-X PRO-4X SL S SV PRO-X PRO-4X SL S SV PRO-X PRO-4X SL S SV PRO-X PRO-4X SL S SV PRO-X PRO-4X SL

Charcoal Cloth	<input checked="" type="checkbox"/>																		
Premium Charcoal Cloth		<input checked="" type="checkbox"/>																	
Sandstone Cloth			<input checked="" type="checkbox"/>																
Charcoal Cloth with Lava Red Stitching				<input checked="" type="checkbox"/>		<input checked="" type="checkbox"/>													
Charcoal Leather with Contrast Stitching ²¹					<input checked="" type="checkbox"/>	<input checked="" type="checkbox"/>					<input checked="" type="checkbox"/>	<input checked="" type="checkbox"/>							

- Standard
- Part of Premium Package
- Crew Cab only

Nissan has taken care to ensure that the color swatches presented here are the closest possible representations of actual vehicle colors. Swatches may vary slightly due to the printing process and whether viewed in daylight, fluorescent or incandescent light. Please see the actual colors at your dealer.



Cardinal Red TriCoat³ Tactical Green Metallic³ Bluestone Pearl³ Super Black

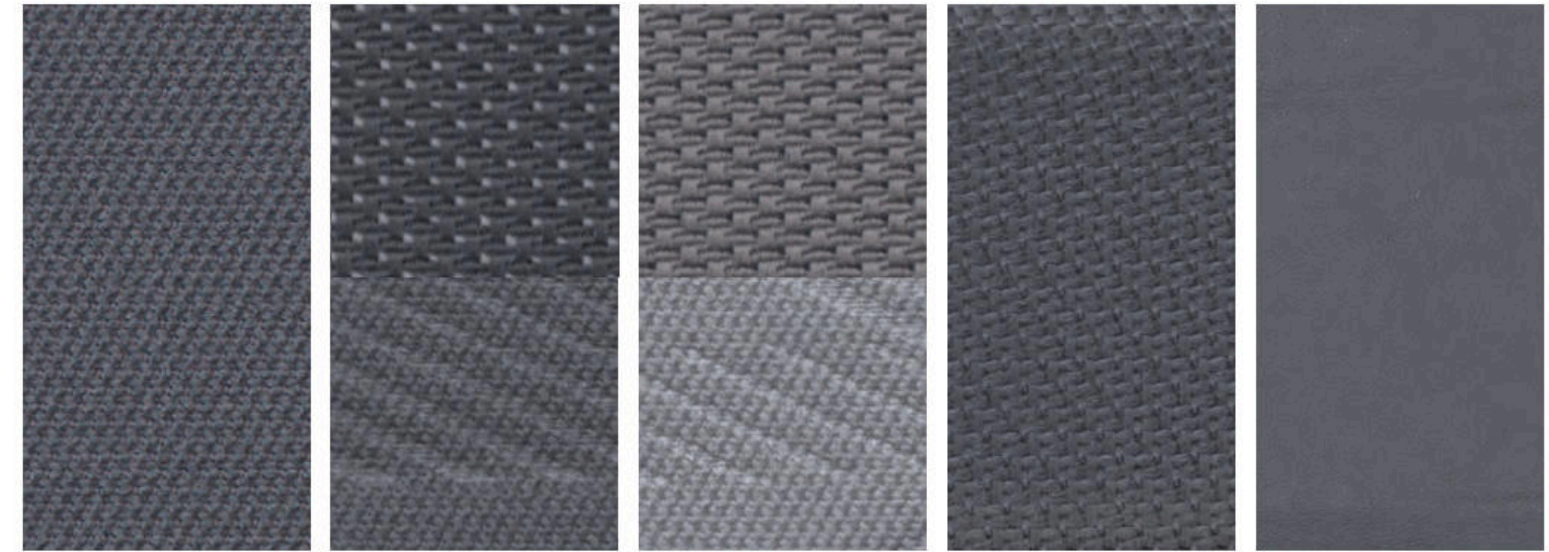
S SV PRO-X PRO-4X SL S SV PRO-X PRO-4X SL S SV PRO-X PRO-4X SL S SV PRO-X PRO-4X SL

Charcoal Cloth																			
Premium Charcoal Cloth		<input checked="" type="checkbox"/>																	
Sandstone Cloth			<input checked="" type="checkbox"/>																
Charcoal Cloth with Lava Red Stitching				<input checked="" type="checkbox"/>		<input checked="" type="checkbox"/>													
Charcoal Leather with Contrast Stitching ²¹					<input checked="" type="checkbox"/>	<input checked="" type="checkbox"/>	<input checked="" type="checkbox"/>				<input checked="" type="checkbox"/>	<input checked="" type="checkbox"/>							

CHOOSE YOUR INTERIOR



Nissan Frontier[®] King Cab[®] SV 4x4 shown in Premium Charcoal Cloth.



Charcoal Cloth Premium Charcoal Cloth Sandstone Cloth Charcoal Cloth with Lava Red Stitching Charcoal Leather with Contrast Stitching²¹

S SV SV Crew Cab PRO-X[®] | PRO-4X[®] PRO-X | PRO-4X | SL

CHOOSE YOUR TRIM LEVEL

S KING CAB® CREW CAB

- 3.8-liter V6 Direct Injection Gasoline engine with 310 hp and 281 lb-ft of torque
- 9-speed automatic transmission
- 16" Styled steel wheels
- Intelligent Forward Collision Warning²²
- Automatic Emergency Braking with Pedestrian Detection⁹
- RearView Monitor²³
- Intelligent Driver Alertness²⁴
- Vehicle Dynamic Control (VDC)²⁵
- Active Brake Limited Slip (ABLS)
- Full-length, fully boxed ladder frame
- 7" Advanced Drive-Assist® Display²⁶
- NissanConnect® 8" color touch-screen display¹⁸
- Voice Recognition²⁷
- Apple CarPlay® integration¹⁸
- Android Auto™ compatibility¹⁸
- Hands-free Text Messaging Assistant²⁸
- Bluetooth® Hands-free Phone System¹⁸
- AM/FM audio system with four speakers
- Streaming Audio via Bluetooth®¹⁸
- One USB-A port and one USB-C port²⁰
- SiriusXM w/ 3-month platinum trial subscription¹⁸
- Remote keyless entry with push button ignition
- Power door locks
- Power windows with driver's one-touch auto-down
- Rear access doors
- Second-row under-seat storage²⁹
- Tire Pressure Monitoring System (TPMS)³⁰

Crew Cab adds:

- Four full-size doors with seating for five
- 60/40-split flip-up rear bench seat
- Rear stabilizer bar
- Rear charge-only USB ports

4x4 adds:

- Switch-operated 2-speed transfer case
- Hill descent control
- Steel front skid plate
- Front tow hook³¹



PRO-X® CREW CAB

Includes SV equipment plus:

- 17" Dark-finished aluminum-alloy wheels
- Bilstein® off-road performance shock absorbers
- LED signature headlights, LED Daytime Running Lights, and LED fog lights
- Lava Red painted tow hooks³¹
- Upper body-color/lower black front bumper
- Black overfenders
- PRO-X bed side decal
- NissanConnect® 9" color touch-screen display¹⁸
- Nissan Door to Door Navigation with Premium Traffic²⁷
- NissanConnect® Services powered by SiriusXM with trial access to 5-year Select, 5-year Plus, and 3-year Premium packages¹⁸
- Wireless Apple CarPlay® integration¹⁸
- Wi-Fi Hotspot¹⁸
- SiriusXM Travel Link with 3-month trial access¹⁸
- Nissan Intelligent Key® with Push Button Ignition
- Dual Zone Automatic Temperature Control
- PRO-X embroidered cloth seats
- Leather-wrapped steering wheel
- Leather-wrapped shift knob
- Lava Red contrast interior stitching and accents
- Sliding rear window
- Tow-Haul Mode switch



PRO-4X® CREW CAB

Includes PRO-X equipment plus:

- Switch-operated 2-speed transfer case
- Hill descent control
- Electronic locking rear differential
- Aluminum front skid plate
- Steel underbody skid plates (oil pan, fuel tank, 4x4 transfer case)
- PRO-4X bed side decal
- PRO-4X embroidered cloth seats
- PRO-4X carpeted floor mats



SV KING CAB® CREW CAB CREW CAB LONG BED

SV includes S equipment plus:

- 16" Aluminum-alloy wheels
- Upper body-color/lower silver front bumper
- Body-color door handles
- Body-color rear bumper
- Dual power outside mirrors
- 6-way power driver's seat, with 2-way manual lumbar support
- AM/FM audio system with six speakers
- Chrome interior door handles
- Vehicle Security System

Crew Cab adds:

- Four full-size doors with seating for five
- 60/40-split flip-up rear bench seat
- Rear stabilizer bar
- Rear charge-only USB ports

4x4 adds:

- Switch-operated 2-speed transfer case
- Hill descent control
- Steel front skid plate
- Front tow hooks³¹



SL CREW CAB

Includes SV equipment plus:

- 17" Dark-painted machine-finished aluminum-alloy wheels
- Leather-appointed seats
- Fender® premium audio system with 10 speakers, including subwoofers
- LED signature headlights, LED Daytime Running Lights, and LED Fog Lights
- Power sliding glass moonroof with tilt feature
- Auto-dimming rearview mirror with Homelink® Universal Transceiver
- Factory-applied spray-on bedliner
- Utili-track® Channel System with two adjustable tie-down cleats¹⁷
- Bed-mounted 120-volt AC power outlet¹⁶
- 120-volt AC power outlet in rear center console¹⁶
- Heated outside mirrors
- Heated leather-wrapped steering wheel
- Heated front seats
- LED under-rail bed lighting
- Remote Engine Start System with Intelligent Climate Control¹
- Class IV tow hitch with 7-pin wiring harness¹⁵
- Dual Zone Automatic Temperature Control
- Nissan Intelligent Key® with Push Button Ignition
- Leather-wrapped shift knob
- Sliding rear window
- Tow-Haul Mode switch



CHOOSE YOUR PACKAGE



TECHNOLOGY PACKAGE | S SV PRO-X* PRO-4X* SL

Available on King Cab,* Crew Cab, and Crew Cab Long Bed

- Lane Departure Warning¹³
- Blind Spot Warning¹²
- Rear Cross Traffic Alert¹¹

- Rear Automatic Braking¹⁰
- High Beam Assist
- Intelligent Cruise Control¹⁴
- Traffic Sign Recognition (PRO-X and PRO-4X only)³²



S UTILITY PACKAGE | S

- Available on King Cab and Crew Cab
- Factory-applied spray-on bedliner
 - Bed-mounted 120-volt AC outlet¹⁶

- 120-volt AC outlet in rear center console¹⁶

FENDER® AUDIO PACKAGE | SV PRO-X* PRO-4X*

- Available on Crew Cab and Crew Cab Long Bed
- Fender® premium audio system with 10 speakers, including subwoofers

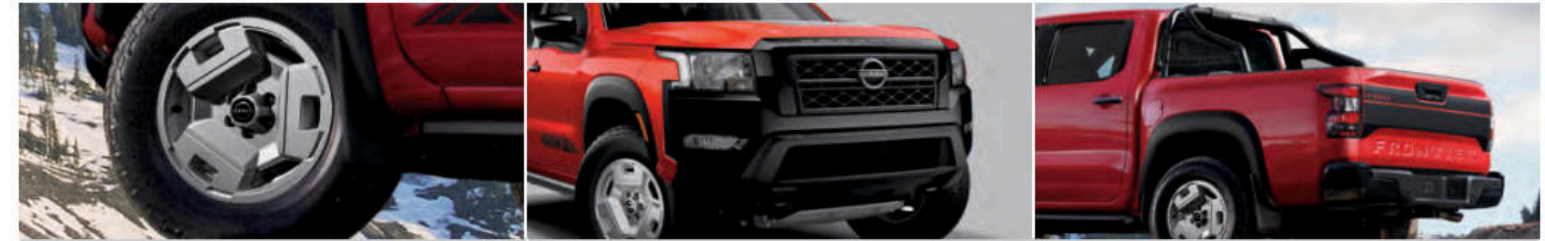


SV CONVENIENCE PACKAGE | SV

- Available on King Cab and Crew Cab
- 17" 6-split spoke aluminum-alloy wheels
 - Factory-applied spray-on bedliner
 - Utili-track® Channel System with two adjustable tie-down cleats¹⁷
 - Bed-mounted 120-volt AC power outlet¹⁶
 - 120-volt AC power outlet in rear center console¹⁶
 - Heated outside mirrors
 - Heated steering wheel
 - Heated front seats
 - LED under-rail bed lighting

- Remote Engine Start System with Intelligent Climate Control¹
- Class IV tow hitch receiver with 7-pin wiring harness¹⁵
- Fog lights
- Dual Zone Automatic Temperature Control
- Nissan Intelligent Key® with Push Button Ignition
- Overhead console with sunglasses storage
- Leather-wrapped shift knob
- Sliding rear window
- Tow-Haul Mode switch
- Illuminated locking glove box with damper

SV Convenience Package is not available on Crew Cab Long Bed.



HARDBODY EDITION³³ (Limited Availability) | SV

Available on Crew Cab

- 17" Heritage aluminum-alloy wheels
- All-terrain tires
- Black overfenders
- Aluminum skid plate

- Black front and rear bumpers
- Black outside mirrors, lower fascia, door handles, and grille
- Off-road rails
- Black exhaust finisher

- Sport bar
- Black exterior decals
- Hardbody Edition mud flaps

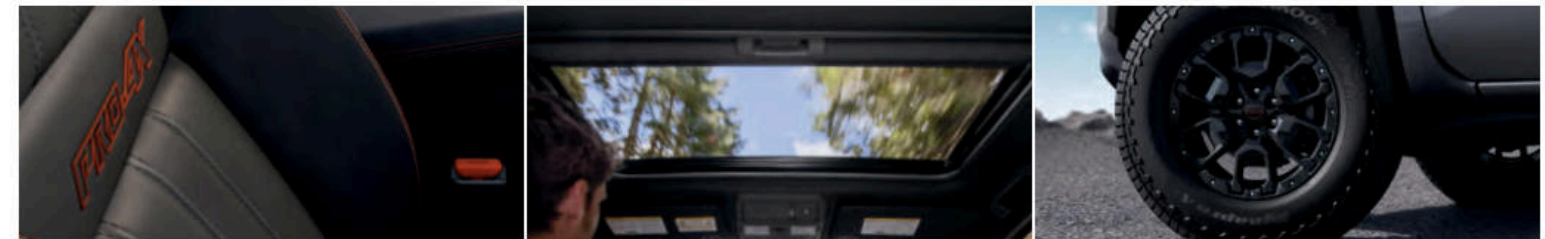


PRO CONVENIENCE PACKAGE | PRO-X* PRO-4X*

Available on Crew Cab

- Factory-applied spray-on bedliner
- Utili-track® Channel System with two adjustable tie-down cleats¹⁷
- Bed-mounted 120-volt AC power outlet¹⁶
- 120-volt AC power outlet in rear center console¹⁶
- Heated outside mirrors
- Heated steering wheel

- Heated front seats
- LED under-rail bed lighting
- Remote Engine Start System with Intelligent Climate Control¹
- Class IV tow hitch receiver with 4-pin/7-pin wiring harness¹⁵
- Intelligent Around View® Monitor (PRO-X)⁴
- Intelligent Around View® Monitor with Off-Road Mode (PRO-4X)⁴
- Wireless charger²⁰



PRO PREMIUM PACKAGE | PRO-X* PRO-4X*

Available on Crew Cab

- 17" Beadlock-style aluminum-alloy wheels
- Fender® premium audio system with 10 speakers, including subwoofers

- Leather-appointed seats
- Auto-dimming rearview mirror with HomeLink® Universal Transceiver
- Power sliding glass moonroof with tilt feature

NISSAN FRONTIER® ACCESSORIES

“Too many mods,” said nobody, ever

Every Genuine Nissan Accessory and NISMO® Part & Accessory is custom-fit, custom-designed, and durability-tested. Each one is backed by Nissan’s 3-year/36,000-mile (whichever occurs first) limited warranty (if installed by the dealer at the time of new vehicle purchase) and can be financed when installed by the dealer at time of new vehicle purchase.³⁴ Affiliated Yakima® accessories are not warranted by Nissan. Refer to product manufacturer for warranty details. Nissan Limited Warranty does not cover damages or failures to the vehicle caused by improper installation or alterations of any Nissan approved accessory or component. Contact your dealer/retailer for details.³⁵

For more information and to shop online for Frontier Genuine Nissan Accessories, go to bit.ly/24Frontier-Accys



Rear/Left: **Nissan Frontier® Crew Cab® PRO-4X®** shown in Boulder Gray Pearl³ with 17" Beadlock-Style Aluminum-Alloy Wheels (standard on PRO-4X with Premium Package), Sport Bar, Hood Wind Deflector, Hood Graphic, Side-Window Deflectors, Off-Road Step Rails, and PRO-4X Mud Flaps.

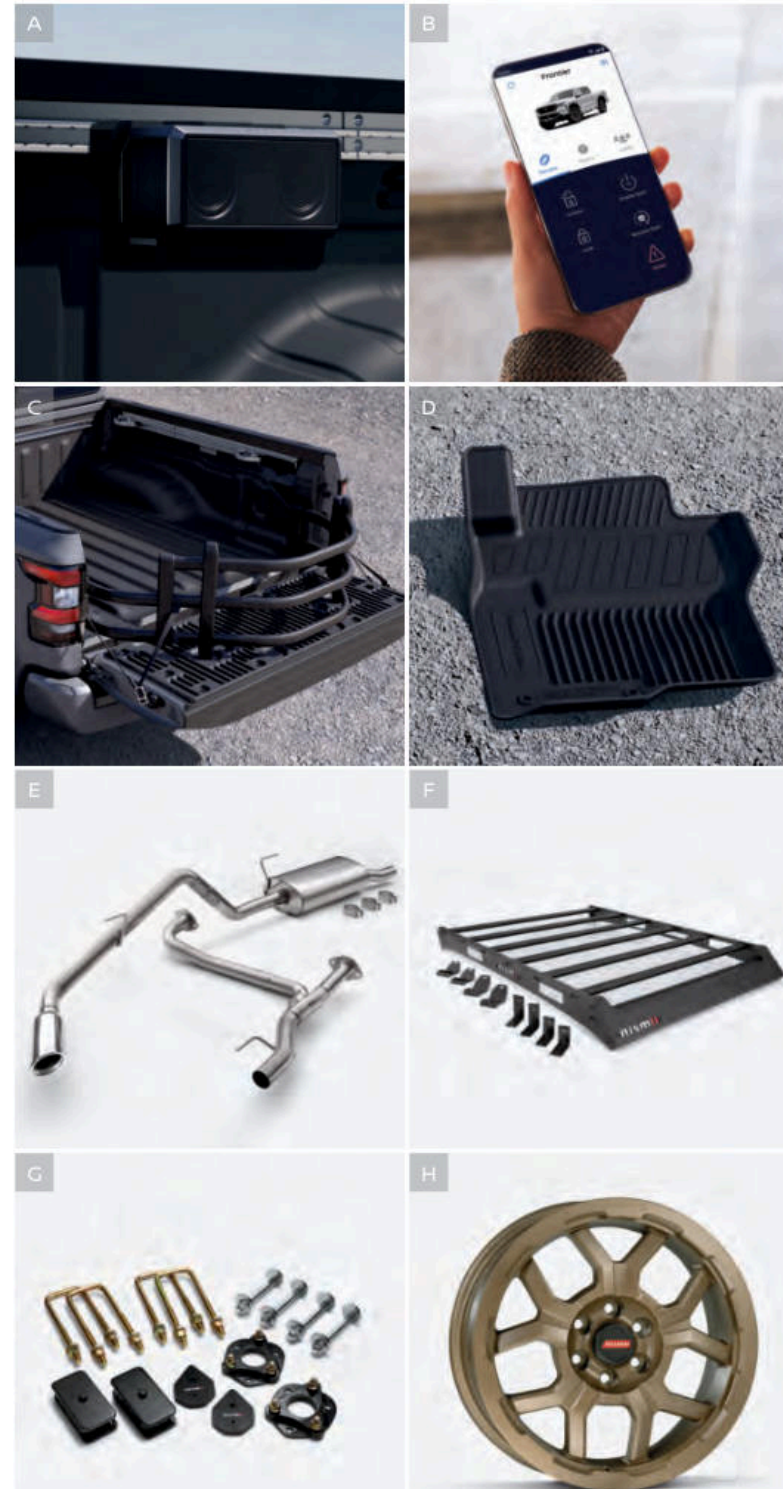
Front/Right: **Nissan Frontier King Cab® SV 4x4** shown in Cardinal Red TriCoat³ with 17" Aluminum-Alloy Wheels, Sport Bar, Black Side Graphic, Side-Window Deflectors, Black Tube Step Rails, Splash Guards (4-piece set), Black Tailgate Logo Insert (3D Lettering), Bed Assist Grip, Bed Area Cargo Net, Rear Bumper Step, Tow Hitch Receiver, Class IV,¹⁵ Hitch Ball Mount,¹⁵ Hitch Ball,¹⁵ and Trailer Tow Harness (4-pin/7-pin).¹⁵

CHOOSE YOUR ACCESSORIES

- A. Nissan Tailgate Audio by KICKER®**
Tailgate with your favorite soundtrack.
- B. Virtual Key³⁶**
Use your compatible smartphone or Apple Watch® to lock/unlock and start your Frontier. You can even share this access with family and friends.
- C. Sliding Bed Extender¹⁷**
Give your bed more capacity, with Utili-track® adjustability.
- D. All-Season Floor Mats — High Wall Liners**
Don't let the muck mess up your truck.
- E. NISMO® Off Road Cat-Back Exhaust**
With a sporty and deep-sounding exhaust tone, this exhaust system delivers without excessive cabin noise or droning.
- F. NISMO® Off Road Roof Rack**
Rugged, low-profile rack adds style, while offering a practical storage solution.
- G. NISMO® Off Road Suspension Lift Kit**
Get more clearance, improved tire fitment, and a more aggressive look for your Frontier with this lift kit.
- H. NISMO® Off Road Bronze Axis Wheels**
Meet the new, rally-proven, NISMO Off Road Axis alloy wheel.

Additional Accessories:

- Dual Camera Drive Recorder³⁸
- Mud Flaps
- Illuminated Kick Plates³⁷
- Interior Door Scuff Protection
- Clear Hood Protector
- Trash Bin
- Carpeted Floor Mats
- Bed Tent
- Affiliated: Yakima® RidgeBack 4 — Hitch Mount Bike Rack^{17, 35}
- Affiliated: Yakima® HitchSki — Hitch Mount Ski Adapter^{17, 35}
- NISMO® Off Road Driving Lights
- NISMO® Off Road Overlanding Racks
- NISMO® Off Road Rooftop Tent
- NISMO® Off Road High-Performance Front Suspension Kit
- NISMO® Off Road High-Performance Rear Suspension
- NISMO® Off Road Hood Graphic
- And More



SPECIFICATIONS

Engine	King Cab ^a		Crew Cab				
	S	SV	S	SV	PRO-X ^b	PRO-4X ^b	SL
3.8-liter Direct Injection Gasoline (DIG) DOHC 24-valve V6 engine Horsepower — 310 hp @ 6,400 rpm Torque — 281 lb-ft of torque @ 4,400 rpm	■	■	■	■	■	■	■

Drivetrain							
9-speed automatic transmission	■	■	■	■	■	■	■
Switch-operated 2-speed transfer case 4x4 ³⁹	□	□	□	□			□
Electronic locking rear differential							■
Tow-Haul Mode switch		C1		C1/LB			■

Brakes							
Front and rear vented disc brakes	■	■	■	■	■	■	■
4-wheel Anti-lock Braking System (ABS)	■	■	■	■	■	■	■
Electronic Brake force Distribution (EBD)	■	■	■	■	■	■	■
Brake Assist ⁴⁰	■	■	■	■	■	■	■

Suspension/Steering							
Independent double-wishbone front suspension with stabilizer bar	■	■	■	■	■	■	■
Overslung multi-leaf rear suspension with solid axle	■	■	■	■	■	■	■
Rear stabilizer bar					■	■	■
Bilstein [®] off-road performance shock absorbers					■	■	■

Driver Assistance Technologies							
Intelligent Cruise Control ¹⁴	T	T	T	T	T	T	T
Intelligent Forward Collision Warning ²²	■	■	■	■	■	■	■
Automatic Emergency Braking with Pedestrian Detection ⁹	■	■	■	■	■	■	■
Lane Departure Warning ¹⁵	T	T	T	T	T	T	T
Blind Spot Warning ¹²	T	T	T	T	T	T	T
Rear Cross Traffic Alert ¹¹	T	T	T	T	T	T	T
RearView Monitor ²³	■	■	■	■	■	■	■
Intelligent Around View [®] Monitor ⁴					C2		
Intelligent Around View [®] Monitor with Off-Road Mode ⁴						C2	
Rear Sonar System ⁴¹	T	T	T	T	T	T	T
Rear Automatic Braking ¹⁰	T	T	T	T	T	T	T
High Beam Assist	■	■	■	■	■	■	■
Hill start assist	■	■	■	■	■	■	■
Hill descent control ⁴²	□	□	□	□			■
Vehicle Dynamic Control (VDC) with Traction Control System (TCS) ²⁵	■	■	■	■	■	■	■
Active Brake Limited Slip (ABLS)	■	■	■	■	■	■	■
Trailer Sway Control ¹⁵	■	■	■	■	■	■	■
Intelligent Driver Alertness ²⁴	■	■	■	■	T	T	■
Traffic Sign Recognition ³²							■

Wheels/Tires							
16" Styled steel wheels	■		■				
16" Aluminum-alloy wheels		■		■			
17" 6-split spoke aluminum-alloy wheels		C1		C1/LB			
17" Heritage aluminum-alloy wheels				H			
17" Dark-painted machine-finished aluminum-alloy wheels							■

- Standard
- T Technology Package
- C1 SV Convenience Package
- F Fender Audio Package
- P2 PRO Premium Package
- Optional
- U S Utility Package
- C2 PRO Convenience Package
- H Hardbody Edition Package³³
- LB Crew Cab Long Bed

Wheels/Tires (continued)	King Cab ^a		Crew Cab				
	S	SV	S	SV	PRO-X ^b	PRO-4X ^b	SL
17" Dark-finished aluminum-alloy wheels					■	■	
17" Beadlock-style aluminum-alloy wheels					P2	P2	
265/70R16 all-season tires							
265/65R17 all-season tires		C1		C1/LB			
265/70R17 all-terrain tires				H	■	■	

Chassis							
Body-on-frame construction	■	■	■	■	■	■	■
Full-length, fully boxed ladder frame	■	■	■	■	■	■	■

Exterior Features							
Front skid plate	■	■	■	■	■	■	■
Skid plates — oil pan, fuel tank, 4x4 transfer case	■	■	■	■	■	■	■
Intelligent Auto Headlights							■
Fog lights		C1		C1/LB			
LED signature headlights, LED Daytime Running Lights, and LED fog lights					■	■	■
LED taillights	■	■	■	■	■	■	■
Front tow hooks ³¹	□	□	□	□			□
Black front grille				H	■	■	■
Black front bumper				H			
Upper body-color/lower black front bumper	■	■	■	■	■	■	■
Upper body-color/lower silver front bumper					■	■	■
Body-color rear bumper				H			
Black rear bumper				H	■	■	
Black overfenders				H	■	■	
Black door handles and outside mirrors				H			
Body-color door handles and outside mirrors					■	■	■
Dual power outside mirrors					■	■	■
Heated outside mirrors		C1		C1/LB	C2	C2	
Rear access doors	■	■					
Four full-size doors							■
Power sliding glass moonroof with tilt feature					P2	P2	■
Sliding rear window		C1		C1/LB	■	■	■
Class IV tow hitch receiver with wiring harness ¹⁵		C1		C1/LB	C2	C2	■
Long Bed				LB			
Utili-track [®] Channel System with two adjustable tie-down cleats ¹⁷		C1		C1/LB	C2	C2	■
Factory-applied spray-on bedliner		U	C1	U	C1/LB	C2	C2
Bed-mounted 120-volt AC power outlet ¹⁶		U	C1	U	C1/LB	C2	C2
Dampened assist tailgate	■	■	■	■	■	■	■
Overhead cargo bed lights	■	■	■	■	■	■	■
LED under-rail bed lighting			C1	C1/LB	C2	C2	■
Off-road rails					H		
Black exhaust finisher					H		
Sport bar					H		
Black exterior decals					H		
Hardbody Edition mud flaps					H		

Interior Features							
Interior trim	■	■	■	■	■	■	■
Interior floor mats					■	■	■
Interior door sill plates					■	■	■
Interior door handle covers					■	■	■
Interior door keyhole covers					■	■	■
Interior door trim					■	■	■
Interior door weatherstripping					■	■	■
Interior door weatherstripping					■	■	■
Interior door weatherstripping					■	■	■
Interior door weatherstripping					■	■	■
Interior door weatherstripping					■	■	■
Interior door weatherstripping					■	■	■
Interior door weatherstripping					■	■	■
Interior door weatherstripping					■	■	■
Interior door weatherstripping					■	■	■
Interior door weatherstripping					■	■	■
Interior door weatherstripping					■	■	■
Interior door weatherstripping					■	■	■
Interior door weatherstripping					■	■	■
Interior door weatherstripping					■	■	■
Interior door weatherstripping					■	■	■

Comfort/Convenience							
Air conditioning		C1		C1/LB			■
Dual Zone Automatic Temperature Control		C1		C1/LB			■
In-cabin microfilter	■	■	■	■	■	■	■
Rear Door Alert ⁴³	■	■	■	■	■	■	■

Comfort/Convenience (continued)	King Cab ^a		Crew Cab				
	S	SV	S	SV	PRO-X ^b	PRO-4X ^b	SL
Remote keyless entry with push button ignition	■	■	■	■			
Nissan Intelligent Key [®] with Push Button Ignition		C1		C1/LB	■	■	■
Remote Engine Start System with Intelligent Climate Control ¹		C1		C1/LB	C2	C2	■
Auto-dimming rearview mirror with HomeLink [®] Universal Transceiver					P2	P2	■
Illuminated locking glove box with damper		C1		C1/LB	■	■	■
Front map lights and rear room lamp	■	■	■	■			■
LED front map lights and rear room lamp					■	■	■
12-volt DC power outlet ⁴⁴	■	■	■	■	■	■	■
120-volt AC power outlet in rear center console ¹⁶	U	C1	U	C1/LB	C2	C2	■
Sun visors with illuminated vanity mirrors and extensions					■	■	
Second-row under-seat storage					■	■	■
Overhead console with sunglasses storage		C1		C1/LB	■	■	■

Seating/Appointments							
6-way manually adjustable driver's seat	■		■				
6-way power adjustable driver's seat, with 2-way manual lumbar support		■		■	■	■	■
4-way manually adjustable passenger's seat	■	■	■	■	■	■	■
Forward-facing rear flip-up seats				■	■	■	■
60/40-split flip-up rear bench seat					■	■	■
Cloth seat trim	■	■	■	■			
PRO embroidered cloth seats							■
Leather-appointed seats					P2	P2	■
Heated front seats		C1		C1/LB	C2	C2	■
Leather-wrapped steering wheel		C1		C1/LB	■	■	■
Heated steering wheel		C1		C1/LB	C2	C2	■
Leather-wrapped shift knob		C1		C1/LB	■	■	■
Lava Red interior accents					■	■	■
PRO-4X [®] carpeted floor mats							■

Infotainment							
7" Advanced Drive-Assist [®] Display ²⁶	■	■	■	■	■	■	■
NissanConnect [®] 8" color touch-screen display ¹⁸	■	■	■	■			■
NissanConnect [®] 9" color touch-screen display ¹⁸					■	■	
Nissan Door to Door Navigation with Premium Traffic ²⁷						■	■
NissanConnect [®] Services powered by SiriusXM with trial access to 5-year Select, 5-year Plus, and 3-year Premium packages ¹⁸					■	■	
Apple CarPlay [®] Integration ¹⁸	■	■	■	■	■	■	■
Wireless Apple CarPlay [®] integration ¹⁸					■	■	■
Android Auto [™] compatibility ¹⁸	■	■	■	■	■	■	■
Wi-Fi Hotspot ¹⁸					■	■	■
SiriusXM Traffic and Travel Link with 3-month trial access ¹⁸						■	■
AM/FM audio system with four speakers	■	■					
AM/FM audio system with six speakers					■	■	■
Fender [®] premium audio system with 10 speakers, including subwoofers					F	F/P2	F/P2
One USB-A port and one USB-C port ²⁰	■	■					
Two USB-A ports and two USB-C ports ²⁰							■
Wireless charger ²⁰					C2	C2	■
SiriusXM w/ 3-month platinum trial subscription included ¹⁸	■	■	■	■			

Safety	King Cab ^a		Crew Cab				
	S	SV	S	SV	PRO-X ^b	PRO-4X ^b	SL
Nissan Advanced Air Bag System with dual-stage supplemental front air bags with seat-belt and occupant-classification sensors ⁴⁵	■	■	■	■	■	■	■
Driver and front-passenger seat-mounted side-impact supplemental air bags ⁴⁵	■	■	■	■	■	■	■
Roof-mounted curtain supplemental air bags for side-impact with rollover sensor ⁴⁵	■	■	■	■	■	■	■
Driver and front-passenger supplemental knee air bags ⁴⁵	■	■	■	■	■	■	■

CAPACITIES/TOWING/PAYLOAD/MPG

Capacities	King Cab	Crew Cab
Seating capacity	4	5
Interior passenger volume (cu. ft.)	85.6	100.1 ⁴⁶
Fuel tank (gals.)	21	21

Maximum Towing — Lbs. ⁴					
	S	SV	PRO-X	PRO-4X	SL
King Cab 4x2	6,640	6,590	-	-	-
King Cab 4x4	6,480	6,480	-	-	-
Crew Cab 4x2	6,510	6,460	6,410	-	6,400
Crew Cab 4x4	6,350	6,350	-	6,170	6,300
Crew Cab Long Bed 4x2	-	6,390	-</		



Sign up to get the latest on
Nissan vehicles, news, and events.

<https://www.nissanusa.com/brochures/request-brochure.html>