



# FRONTIER®

2026



<sup>1</sup>Towing capacity varies by configuration. See Nissan Towing Guide and Owner's Manual for additional information. Always secure cargo. <sup>2</sup>Cargo shown for display purposes only. Cargo and load capacity limited by weight and distribution. Always secure cargo. Heavy loading of the vehicle with cargo, especially on the roof, will affect the handling and stability of the vehicle. <sup>3</sup>Extra cost option. <sup>4</sup>Remote Engine Start System to be used only in accordance with laws or rules in effect in your vehicle's location. <sup>5</sup>Feature availability varies by vehicle model year, model, trim level, packaging and options. <sup>6</sup>Driving is serious business and requires your full attention. If you have to use the connected device while driving, exercise extreme caution at all times so full attention may be given to vehicle operation. External device not included. <sup>7</sup>See [NissanUSA.com/connect/legal](https://www.nissanusa.com/connect/legal) for more NissanConnect features/services information. <sup>8</sup>Never program while driving. GPS mapping may not be detailed in all areas or reflect current road status. <sup>9</sup>Use Hands Free Text Messaging when parked in a safe location. If you must use while driving, monitor traffic conditions and keep both hands on the steering wheel to prevent collisions. Compatible device required. Message and data rates may apply. <sup>10</sup>Driver-assist and safety features have limitations which affect how they function in certain situations. The driver must never rely exclusively on any vehicle feature to warn about, prevent, or lessen the severity of a collision. It is the driver's responsibility to always be in control, monitor the surroundings, and safely operate the vehicle. Read your vehicle's Owner's Manual for further information. <sup>11</sup>Up to 1,590 lbs. maximum payload for 2026 Frontier King Cab<sup>®</sup> 4x2; 1,430 lbs. for Frontier King Cab<sup>®</sup> 4x4; 1,490 lbs. for Frontier Crew Cab 4x2; 1,330 lbs. for Frontier Crew Cab 4x4; 1,400 lbs. for Frontier Crew Cab Long Bed 4x2; and 1,200 for Frontier Crew Cab Long Bed 4x4. Payload varies by configuration. See Nissan Towing Guide and Owner's Manual for additional information. Cargo and load capacity limited by weight and distribution. Always secure cargo. <sup>12</sup>Up to 7,150 lbs. maximum towing for 2026 Frontier King Cab<sup>®</sup> 4x2; 7,000 lbs. for Frontier King Cab<sup>®</sup> 4x4; 7,070 lbs. for Frontier Crew Cab 4x2; 6,960 lbs. for Frontier Crew Cab 4x4; 6,920 lbs. for Frontier Crew Cab Long Bed 4x2; and 6,760 lbs. for Frontier Crew Cab Long Bed 4x4. Towing capacity varies by configuration. See Nissan Towing Guide and Owner's Manual for additional information. Cargo and load capacity limited by weight and distribution. Always secure cargo. <sup>13</sup>120-volt power outlet is intended only for use with compatible items. Please check specifications of wattage and amperage of items to be plugged in to determine compatibility. <sup>14</sup>Information displayed in image is dependent on how vehicle is equipped. Driving is serious business and requires your full attention. If you have to use the feature while driving, exercise extreme caution at all time so full attention may be given to vehicle operation. <sup>15</sup>Second-row under-seat storage not available on Frontier Crew Cab S models. <sup>16</sup>One tow hook for S trim; two tow hooks for SV, PRO-X<sup>®</sup> and PRO-4X<sup>®</sup> trims. <sup>17</sup>Traffic Sign Recognition may not detect and read all traffic signs in all conditions. Driver should monitor all traffic signs and obey all traffic laws. See Owner's Manual for details. <sup>18</sup>Images shown for illustrative purposes only. For complete limited warranty details, see your Nissan dealer and read the vehicle's Warranty Information Booklet. <sup>19</sup>Affiliated Yakima accessories are not genuine Nissan parts/accessories. Not warranted by Nissan. Refer to product manufacturer for warranty details. Nissan limited warranty does not cover damages or failures to the vehicle caused by improper installation or alterations of any accessory or component. Contact your dealer for details. <sup>20</sup>Dual Camera Drive Recorder to be used only in accordance with any laws or rules in effect in your vehicle's location that may apply to audio or video recordings of drivers and passengers. <sup>21</sup>Vehicle shown is for illustrative purposes only. Not representative of brochure's model year/model. <sup>22</sup>Only front kick plates illuminate. <sup>23</sup>King Cab, Crew Cab Long Bed, and Crew Cab 4x2 models only. <sup>24</sup>4x4 only. <sup>25</sup>Rear Door Alert System does not detect people or cargo. Always check rear seat before exiting. See Owner's Manual for safety information. <sup>26</sup>Driving is serious business and requires your full attention. Do not operate any devices connected to the power outlets while driving. <sup>27</sup>Air bags are only a supplemental restraint system. Always wear your seat belt. Rear-facing child restraints should not be placed in the front-passenger's seat. All children 12 and under should ride in the rear seat properly secured in child restraints, booster seats, or seat belts according to their size. Air bags will only inflate in certain accidents. See Owner's Manual for safety information. <sup>28</sup>Interior passenger volume with moonroof is 98.9 cu. ft. <sup>29</sup>2026 EPA Fuel Economy Estimates. 19 City MPG / 24 Highway MPG / 21 Combined MPG for Frontier<sup>®</sup> 4x2. 17 City MPG / 21 Highway MPG / 19 Combined MPG for Frontier 4x4. 16 City MPG / 20 Highway MPG / 18 Combined MPG for Frontier PRO-4X 4x4. Actual mileage may vary with driving conditions. Use for comparison only. <sup>30</sup>Roadside assistance coverage period varies by model year and model. Includes Trip Interruption benefits. For complete information concerning warranty coverage, conditions and exclusions, see your Nissan dealer and read your vehicle's Warranty Information Booklet. Apple CarPlay,<sup>®</sup> Apple Music,<sup>®</sup> and Siri<sup>®</sup> are registered trademarks of Apple, Inc. Bilstein<sup>®</sup> is a registered trademark of ThyssenKrupp Bilstein GmbH. Fender<sup>®</sup> is a registered trademark of Fender Musical Instruments Corporation. Google, Android Auto, Google Maps, and YouTube Music are trademarks of Google LLC. Google Assistant is not available in certain languages and countries. Wireless use of Android Auto requires a compatible Android 11.0+ phone and compatible active data plan. Check [g.co/androidauto/requirements](https://www.g.co/androidauto/requirements) for compatibility. HomeLink<sup>®</sup> is a registered trademark of Gentex Corporation. iPhone<sup>®</sup> is a registered trademark of Apple, Inc. All rights reserved. iPhone<sup>®</sup> or other external device not included. KICKER<sup>®</sup> is a registered trademark of Stillwater Designs. SiriusXM is a registered trademark of Sirius XM Radio Inc. Yakima<sup>®</sup> is a registered trademark of Yakima Products, Inc. This brochure is intended for general descriptive and informational purposes only. It is subject to change and does not constitute an offer, representation or warranty (express or implied) by Nissan North America, Inc. Interested parties should confirm the accuracy of any information in this brochure as it relates to a vehicle directly with Nissan North America, Inc., before relying on it to make a purchase decision. Nissan North America, Inc., reserves the right to make changes, at any time, without prior notice, in prices, colors, materials, equipment, specifications, and models and to discontinue models or equipment. Due to continuous product development and other pre- and post-production factors, actual vehicle, materials and specifications may vary from this brochure. Some vehicles shown with optional equipment. See the actual vehicle for complete accuracy. Availability and delivery times for particular models or equipment may vary. Specifications, options and accessories may differ in Hawaii, U.S. territories and other countries. For additional information on availability, options or accessories, see your Nissan dealer or contact Nissan North America, Inc. At [NissanUSA.com](https://www.nissanusa.com), you'll find virtual product demonstrations, a way to "build your own Nissan," a dealer locator, and more information about key Nissan support services. Or if you'd prefer, call 1-800-NISSAN-3 for answers to specific questions about Frontier or any other Nissan vehicle. The Nissan names, logos, product names, feature names, and slogans are trademarks owned by or licensed to Nissan Motor Co. Ltd. and/or its North American subsidiaries. Other trademarks and trade names are those of their respective owners. Always wear your seat belt, and please drive responsibly. ©2025 Nissan North America, Inc. All rights reserved. <sup>26</sup>Frontier<sup>®</sup> 268273-N-09/25-581K-KSL

# More capability, more freedom to roam

Frontier's 60-year legacy of off-road capability, on-the-job dependability, and competitiveness in racing make it one of the most storied trucks on the road. Designed and engineered to conquer the next challenge on the horizon, whether you're towing,<sup>1</sup> hauling,<sup>2</sup> commuting, or road-tripping. Frontier® makes epic the norm with trail-ready toughness, a suite of standard advanced safety features, and innovative tech. With Frontier, you're free to be free.



Nissan Frontier® PRO-4X® shown in Boulder Gray Pearl<sup>3</sup> with Genuine Nissan Accessories.



PRO-4X

### Rough, tough, and still refined

The destination is rocky, dusty, and sometimes rough. Just what Frontier® was built to conquer, and deliver an elevated ride while doing it. With a premium audio experience, tons of content within easy reach, and an available Remote Engine Start System, you can start your Frontier remotely,<sup>4</sup> hop in, and find comfort in a pre-warmed or pre-cooled interior with road trip-ready standard Zero Gravity front seats. Frontier also delivers the ultimate comfort of available Dual Zone Automatic Temperature Control and available heated steering wheel and front seats.<sup>5</sup>

- Remote Engine Start System<sup>4,5</sup>
- Heated Front Seats<sup>5</sup>
- Heated Steering Wheel<sup>5</sup>
- Dual Zone Automatic Temperature Control<sup>5</sup>
- Zero Gravity Front Seats
- Fender® Premium Audio System<sup>5</sup>

Nissan Frontier® Crew Cab PRO-4X® shown in Charcoal Leather appointments with Lava Red Stitching and optional equipment.





### Built tough, wired smart

All your favorite music, apps, and maps are at your fingertips and look better than ever with the available high-resolution 12.3" touch-screen display with wireless connectivity.<sup>5, 6, 7, 8</sup> Enjoy the modern convenience of NissanConnect<sup>®</sup> Services with an available Wi-Fi Hotspot,<sup>7</sup> wireless Apple CarPlay,<sup>®</sup> Android Auto,<sup>™</sup> and available wireless charging while you unplug and take on your next adventure, fully connected.<sup>5, 6, 7</sup>

### Standard Nissan Safety Shield<sup>®</sup> 360 and driver assist technologies

Your well-being is a priority, and Frontier offers a wide assortment of safety features and driver assist technologies that can help you avoid collisions and have more peace of mind when you're towing, hauling, and doing truck things.<sup>1, 2, 10</sup>

- |   |                                      |  |                                  |                                      |                  |  |
|---|--------------------------------------|--|----------------------------------|--------------------------------------|------------------|--|
| Automatic Emergency Braking with Pedestrian Detection <sup>10</sup> | Rear Automatic Braking <sup>10</sup> | Rear Cross Traffic Alert <sup>10</sup> | Blind Spot Warning <sup>10</sup> | Lane Departure Warning <sup>10</sup> | High Beam Assist | Intelligent Cruise Control <sup>10</sup> |
|---|--------------------------------------|--|----------------------------------|--------------------------------------|------------------|--|



### Experience maximum compatibility

Enjoy the convenience of finding the nearest gas station or adventurous detour with a simple ask to Siri.<sup>®</sup> Equipped with Siri<sup>®</sup> voice control, Apple CarPlay<sup>®</sup> brings your contacts, favorite messaging apps, Apple Music<sup>®</sup> playlists, Apple Maps, and more on every journey. Simply connect your compatible iPhone<sup>®</sup> and hit the road.<sup>6, 7, 8, 9</sup>



Talk to Google Assistant on Android Auto and get things done with your voice. Easily send messages, get directions, and more. Just say, "Hey Google," or long-press the voice control button on your steering wheel to get started. And with 2026 Frontier,<sup>®</sup> you can connect wirelessly.<sup>5, 6, 7, 8, 9</sup>

Nissan Frontier<sup>®</sup> Crew Cab PRO-4X<sup>®</sup> shown in Glacier White with up to 1,220 lbs. maximum payload capacity.<sup>11</sup>

# 310

V6 Horsepower

# 1,590

lbs. max Payload<sup>11</sup>

# 7,150

lbs. max Towing<sup>12</sup>

## All the gear to get it done

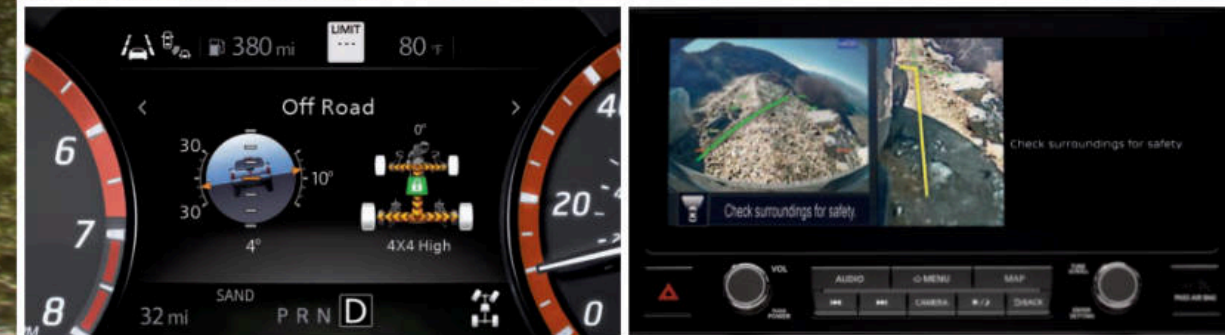
Frontier<sup>®</sup> is a truck solidly built to pull your dreams farther off the beaten path, starting with Tow-Haul Mode, which optimizes your drive on the highway for heavier loads.<sup>5</sup> Turn off the highway, and Frontier can help you boldly overcome uneven, hilly terrain with features like hill start assist, hill descent control,<sup>5</sup> and confidence-inspiring approach, breakover, and departure angles. When it's time to get your trailer of choice up that last hill, engage 4LO and the electronic locking rear differential for maximum traction.<sup>1, 5</sup>

Tow-Haul Mode<sup>5</sup> | Hill Start Assist | Hill Descent Control<sup>5</sup> | Electronic Locking Rear Differential<sup>5</sup>



Nissan Frontier<sup>®</sup> Crew Cab PRO-4X<sup>®</sup> shown in Boulder Gray Pearl<sup>3</sup> with up to 1,220 lbs. maximum payload capacity and up to 6,680 lbs. maximum towing capacity.<sup>11, 12</sup>

## PRO-4X



## A master in off-roading

Frontier PRO-4X<sup>®</sup> is expertly designed with cutting-edge technologies and rugged off-road features to help you power through all the sand, mud, dirt, and rocks your thrill-seeking journeys bring.

**Off-road Upgrades** With its rugged all-terrain tires, Bilstein<sup>®</sup> off-road performance shocks, electronic locking rear differential, and protective skid plates, the PRO-4X checks all the boxes of a reliable off-road performer.

**2-speed Transfer Case / Terrain Mode Selector** The Frontier PRO-4X can adapt when the going gets tough, with 2WD, 4HI, and 4LO for optimal traction, plus four new Terrain Modes: Road, Rock, Snow, and Sand.

**Dedicated Off-road Display** Keep track of pitch, roll, and key off-road functions, like 4x4 engagement and differential lock status, for a more confident and productive day on the trail with the PRO-4X.

**Intelligent Around View<sup>®</sup> Monitor** Like a virtual spotter, the available Intelligent Around View<sup>®</sup> Monitor with Off-Road Mode can show more of the trail around you to help you navigate tougher obstacles.<sup>10</sup>

## Truck bed 2.0

**LED Bed Lighting** Even after dark, there's plenty of light to see what you're loading with Frontier's available LED under-rail bed lighting.

**120-V Outlet** Frontier's available bed-mounted 120-volt AC power outlet gives you the flexibility of a household power plug for electricity on the go.<sup>13</sup>

Dampened Tailgate | Spray-on Bedliner<sup>5</sup> | 3 Utili-track<sup>®</sup> Channels<sup>2, 5</sup>



**Nissan Frontier<sup>®</sup> Crew Cab PRO-4X<sup>®</sup>** shown in Tactical Green Metallic<sup>2</sup> with up to 1,220 lbs. maximum payload capacity.<sup>11</sup>

**Under-seat Storage** Removable under-seat storage trays stash beneath the rear seats, so there's space to hide your gear. Plus, you can flip up the rear-seat cushions for even more storage room.<sup>5</sup>

**Two Cabs & Two Bed Lengths** Configurations galore. Choose from either the workhorse King Cab,<sup>®</sup> which seats four with a 6-foot bed, or the versatile five-seater Crew Cab with either a 5-foot or 6-foot bed.<sup>2</sup>

**King Cab<sup>®</sup>  
Bed — 6.0'**

Available on S



**Crew Cab  
Short Bed — 5.0'**

Available on S, SV, PRO-X,<sup>®</sup>  
and PRO-4X<sup>®</sup>



**Crew Cab  
Long Bed — 6.0'**

Available on SV and PRO-4X<sup>®</sup>



## Reliably rugged, selectively cool

Take on the trails without taking a beating. Frontier<sup>®</sup> embraces in-home comforts with its well-designed interior. Enjoy a night under the stars with the available power sliding glass moonroof with tilt feature. Find the ideal comfort zone with the 8-way power driver's seat with power lumbar and 4-way power passenger's seat.<sup>5</sup> Sit back and appreciate the off-road bliss.

Tilt and Telescoping Steering Wheel

8-way Power Driver's Seat with 2-way Power Lumbar<sup>5</sup>

4-way Power Passenger's Seat<sup>5</sup>

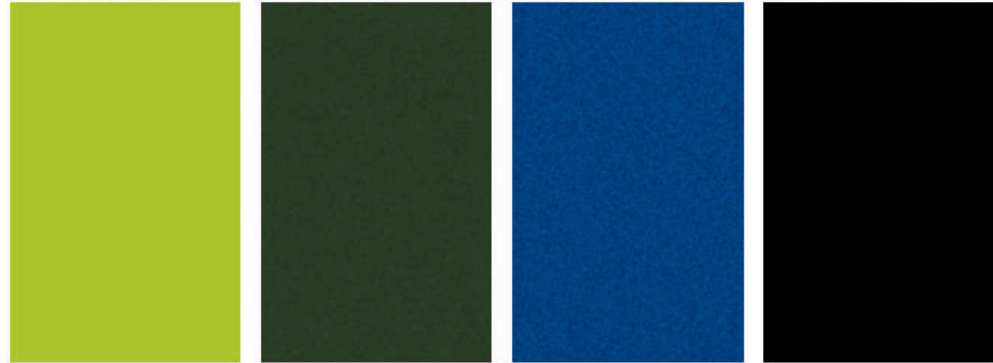


## CHOOSE YOUR COLOR



Glacier White      Gun Metallic      Boulder Gray Pearl<sup>3</sup>      Afterburn Orange<sup>3</sup>      Red Alert

	S	SV	PRO-X	PRO-4X
Charcoal Cloth	<input type="checkbox"/>	<input type="checkbox"/>	<input type="checkbox"/>	<input type="checkbox"/>
Premium Charcoal Cloth	<input type="checkbox"/>	<input type="checkbox"/>	<input type="checkbox"/>	<input type="checkbox"/>
PRO Charcoal Cloth	<input type="checkbox"/>	<input type="checkbox"/>	<input type="checkbox"/>	<input type="checkbox"/>
PRO Charcoal Leather appointments	<input type="checkbox"/>	<input type="checkbox"/>	<input type="checkbox"/>	<input type="checkbox"/>



Citrus Strike<sup>3</sup>      Tactical Green Metallic<sup>3</sup>      Bluestone Pearl<sup>3</sup>      Super Black

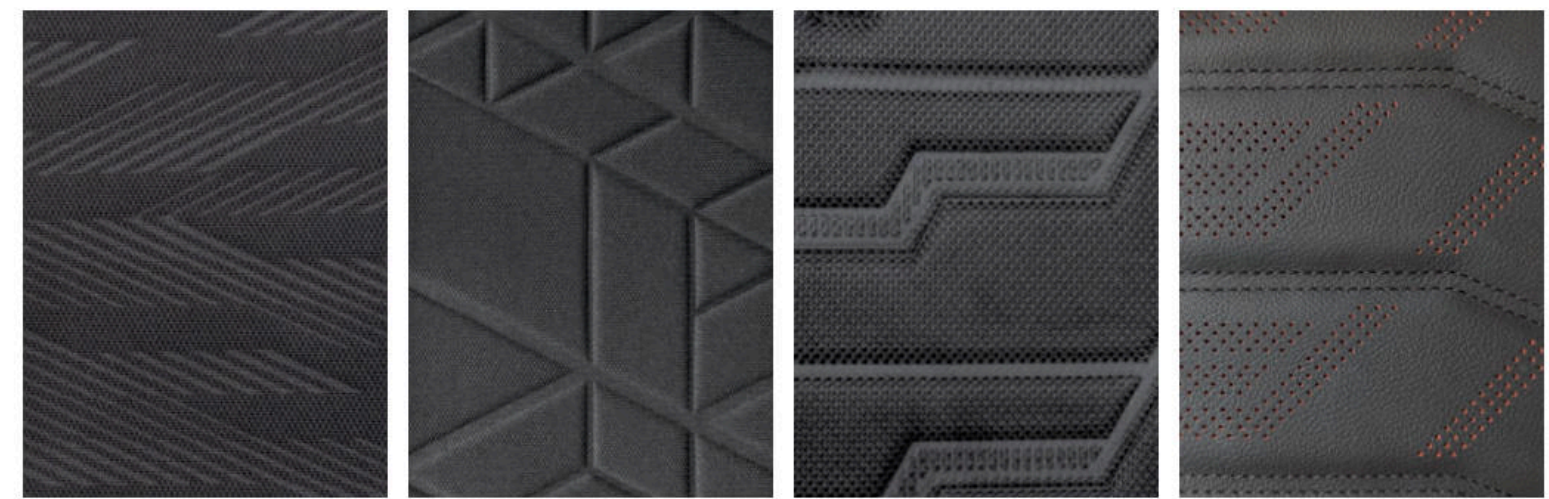
	S	SV	PRO-X	PRO-4X
Charcoal Cloth	<input type="checkbox"/>	<input type="checkbox"/>	<input type="checkbox"/>	<input type="checkbox"/>
Premium Charcoal Cloth	<input type="checkbox"/>	<input type="checkbox"/>	<input type="checkbox"/>	<input type="checkbox"/>
PRO Charcoal Cloth	<input type="checkbox"/>	<input type="checkbox"/>	<input type="checkbox"/>	<input type="checkbox"/>
PRO Charcoal Leather appointments	<input type="checkbox"/>	<input type="checkbox"/>	<input type="checkbox"/>	<input type="checkbox"/>

Standard  
 DA Available with Dark Armor™ Package  
 P Part of PRO Premium Package  
 Nissan has taken care to ensure that the color swatches presented here are the closest possible representations of actual vehicle colors. Swatches may vary slightly due to the printing process and whether viewed in daylight, fluorescent or incandescent light. Please see the actual colors at your dealer.

## CHOOSE YOUR INTERIOR



Nissan Frontier® King Cab® S 4x4 shown in Charcoal Cloth.



Charcoal Cloth S      Premium Charcoal Cloth SV      PRO Charcoal Cloth PRO-X | PRO-4X      PRO Charcoal Leather appointments PRO-X | PRO-4X with Premium Package

## CHOOSE YOUR TRIM LEVEL

### S KING CAB® CREW CAB

- 3.8-liter V6 engine
- 9-speed automatic transmission
- 16" Styled steel wheels
- Safety Shield® 360<sup>10</sup> — Automatic Emergency Braking with Pedestrian Detection,<sup>10</sup> Lane Departure Warning,<sup>10</sup> Blind Spot Warning,<sup>10</sup> Rear Cross Traffic Alert,<sup>10</sup> Rear Automatic Braking,<sup>10</sup> High Beam Assist
- RearView Monitor<sup>10</sup>
- Rear Sonar System<sup>10</sup>
- Hill start assist
- Full-length, fully boxed ladder frame
- LED headlights
- 7" Advanced Drive-Assist® Display<sup>14</sup>
- NissanConnect® 8" color touch-screen display<sup>7</sup>

- NissanConnect® Services powered by SiriusXM® with trial access to 5-year Select and 1-year Premium packages<sup>7</sup>
- Apple CarPlay® integration<sup>6,7</sup>
- Android Auto™ compatibility<sup>6,7</sup>
- Wi-Fi Hotspot<sup>7</sup>
- AM/FM audio system with four speakers
- One USB-A port and one USB-C port<sup>6</sup>
- Remote keyless entry with push button ignition
- Power door locks
- Power windows with driver's one-touch auto-down
- Rear access doors
- Sliding rear window
- Second-row under-seat storage<sup>15</sup>

#### Crew Cab adds:

- Four full-size doors with seating for five
- 16" Aluminum-alloy wheels
- 60/40-split flip-up rear bench seat

- Rear stabilizer bar
- Rear charge-only USB ports



#### 4x4 adds:

- Switch-operated 2-speed transfer case
- Hill descent control
- Steel front skid plate
- Front tow hook<sup>16</sup>

### SV CREW CAB CREW CAB LONG BED

#### Includes S equipment plus:

- 17" Aluminum-alloy wheels
- Rear stabilizer bar
- Upper body-color/lower silver front bumper
- Body-color door handles
- Body-color rear bumper
- Dual power outside mirrors
- 8-way power driver's seat, with 2-way power lumbar support
- NissanConnect® 12.3" color touch-screen display<sup>7</sup>

- Wireless Apple CarPlay® integration<sup>6,7</sup>
- Wireless Android Auto™ compatibility<sup>6,7</sup>
- Rear charge-only USB ports
- SiriusXM® w/ 3-month trial subscription included<sup>7</sup>
- AM/FM audio system with six speakers
- Vehicle Security System
- Four full-size doors with seating for five
- 60/40-split flip-up rear bench seat

#### 4x4 adds:

- Switch-operated 2-speed transfer case
- Terrain Mode Selector w/ four modes
- Hill descent control

- Steel front skid plate
- Front tow hooks<sup>16</sup>



### PRO-X® CREW CAB

#### Includes SV equipment plus:

- 17" PRO aluminum-alloy wheels
- Bilstein® off-road performance shock absorbers
- LED signature headlights, LED Daytime Running Lights, and LED fog lights
- Lava Red painted tow hooks<sup>16</sup>
- Upper body-color/lower black front bumper
- Black overfenders
- PRO-X bed side decal
- Tailgate finisher
- Nissan Intelligent Key® with Push Button Ignition

- Remote Engine Start System with Intelligent Climate Control<sup>4</sup>
- Dual Zone Automatic Temperature Control
- 4-way power passenger's seat
- PRO-X embroidered cloth seats
- Heated front seats
- Heated leather-wrapped steering wheel
- Lava Red contrast interior stitching and accents
- Locking glove box
- Tow-Haul Mode switch



### PRO-4X® CREW CAB CREW CAB LONG BED

#### Includes PRO-X equipment plus:

- Switch-operated 2-speed transfer case
- Terrain Mode Selector w/ four modes
- Hill descent control
- Electronic locking rear differential
- Aluminum front skid plate

- Steel underbody skid plates (oil pan, fuel tank, 4x4 transfer case)
- PRO-4X bed side decal
- PRO-4X embroidered cloth seats
- PRO-4X carpeted floor mats



## CHOOSE YOUR PACKAGE



### S UTILITY PACKAGE | S

Available on King Cab and Crew Cab

- Factory-applied spray-on bedliner

- Bed-mounted 120-volt AC outlet<sup>13</sup>
- 120-volt AC outlet in rear center console<sup>13</sup>



### DARK ARMOR™ PACKAGE | SV

Available on Crew Cab and Crew Cab Long Bed

- 17" Dark aluminum-alloy wheels
- Dark front grille

- Dark outside mirror caps
- Dark Armor badge
- Dark FRONTIER tailgate lettering

- Dark interior accents
- Dark headliner



### SV CONVENIENCE PACKAGE | SV

Available on Crew Cab and Crew Cab Long Bed

- Factory-applied spray-on bedliner
- Utili-track® Channel System with two adjustable tie-down cleats<sup>2</sup>
- Bed-mounted 120-volt AC power outlet<sup>13</sup>
- 120-volt AC power outlet in rear center console<sup>13</sup>
- Heated outside mirrors
- Heated leather-wrapped steering wheel
- Heated front seats

- LED under-rail bed lighting
- Remote Engine Start System with Intelligent Climate Control<sup>4</sup>
- Class IV tow hitch receiver with 7-pin wiring harness<sup>1</sup>
- Dual Zone Automatic Temperature Control
- Nissan Intelligent Key® with Push Button Ignition
- Tow-Haul Mode switch
- Locking glove box



### PRO CONVENIENCE PACKAGE | PRO-X® PRO-4X®

Available on Crew Cab and Crew Cab Long Bed

- Factory-applied spray-on bedliner
- Utili-track® Channel System with two adjustable tie-down cleats<sup>2</sup>
- Bed-mounted 120-volt AC power outlet<sup>13</sup>
- 120-volt AC power outlet in rear center console<sup>13</sup>
- Heated outside mirrors

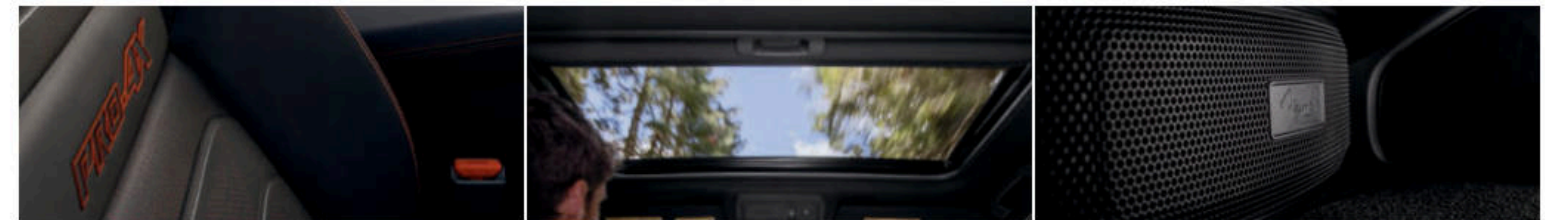
- LED under-rail bed lighting
- Class IV tow hitch receiver with 4-pin/7-pin wiring harness<sup>1</sup>
- Intelligent Around View® Monitor (PRO-X)<sup>10</sup>
- Intelligent Around View Monitor with Off-Road Mode (PRO-4X)<sup>10</sup>
- Wireless charger



### ALL-WEATHER PACKAGE | SV

Available on Crew Cab and Crew Cab Long Bed

- Heated leather-wrapped steering wheel
- Heated front seats
- Dual Zone Automatic Temperature Control
- Remote Engine Start System with Intelligent Climate Control<sup>4</sup>



### PRO PREMIUM PACKAGE | PRO-X® PRO-4X®

Available on Crew Cab and Crew Cab Long Bed

- Fender® premium audio system with 10 speakers, including subwoofers
- Leather-appointed seats

- Auto-dimming rearview mirror with HomeLink® Universal Transceiver
- Nissan Door to Door Navigation with Premium Traffic<sup>8</sup>
- Traffic Sign Recognition<sup>17</sup>
- Power sliding glass moonroof with tilt feature

## NISSAN FRONTIER® ACCESSORIES

### “Too many mods,” said nobody, ever

Every Genuine Nissan Accessory and NISMO® Part & Accessory is custom-fit, custom-designed, and durability-tested. Each one is backed by Nissan's 3-year/36,000-mile (whichever occurs first) limited warranty (if installed by the dealer at the time of new vehicle purchase) and can be financed when installed by the dealer at time of new vehicle purchase.<sup>18</sup> Affiliated Yakima® accessories are not warranted by Nissan. Refer to product manufacturer for warranty details. Nissan Limited Warranty does not cover damages or failures to the vehicle caused by improper installation or alterations of any Nissan-affiliated accessory or component. Contact your dealer/retailer for details.<sup>19</sup>



For more information and to shop online for Frontier® Genuine Nissan Accessories, scan the code.



Rear/Left: **Nissan Frontier® Crew Cab PRO-4X®** shown in Boulder Gray Pearl<sup>3</sup> with 17" Two-Tone Beadlock-Style Aluminum-Alloy Wheels, White Tow Hooks, Grille Accent Lighting, Hood Wind Deflector, Hood Graphic, Sport Bar, Light Bracket (for Sport Bar), Side-Window Deflectors, Step Boards, and PRO-4X Mud Flaps.

Front/Right: **Nissan Frontier® Crew Cab SV Long Bed 4x4** shown in Red Alert with 17" Aluminum-Alloy Wheels, Side-Window Deflectors, Cargo Carrier,<sup>2</sup> Bed Assist Grip, Black Side Graphic, Black Tailgate Logo Insert (3D Lettering), Rear Bumper Step, Tow Hitch Receiver, Class IV,<sup>1</sup> Hitch Ball Mount,<sup>1</sup> Hitch Ball,<sup>1</sup> Trailer Tow Harness (4-pin/7-pin),<sup>1</sup> Off-Road Step Rails, Black Exhaust Finisher Kit, and Splash Guards (4-piece set).

## CHOOSE YOUR ACCESSORIES

- A. Nissan Tailgate Audio by KICKER®**  
Tailgate with your favorite soundtrack.
- B. Soft Tonneau Cover**  
Protect your Frontier's bed from the elements — and prying eyes.
- C. Sliding Bed Extender<sup>2</sup>**  
Give your bed more capacity with Utili-track® adjustability.
- D. All-Season Floor Mats — High Wall Liners**  
Don't let the muck mess up your truck.
- E. Dual Camera Drive Recorder<sup>20, 21</sup>**  
Catch what's happening outside and inside your Frontier.
- F. Black Tube Step Rails**  
Step up your style and give everyone a boost up.
- G. Electronic Tailgate Lock**  
Lock your tailgate automatically with the press of a button.
- H. Bed Mat**  
Armor the inside of your bed.

#### Additional Accessories:

- Bed Area Cargo Net
- Bed Tent
- Mud Flaps
- Illuminated Kick Plates<sup>22</sup>
- Interior Door Scuff Protection
- Clear Hood Protector
- Carpeted Floor Mats
- Interior LED Lighting Upgrade
- USB Charging Cable Set<sup>6</sup>
- Trash Bin
- Soft Sided Cargo Cooler
- Dog Harnesses (S, M, L, XL)
- Black Chrome Lug Nuts and Wheel Locks
- Affiliated: Yakima® RidgeBack 4 — Hitch Mount Bike Rack<sup>2, 19</sup>
- Affiliated: Yakima® HitchSki — Hitch Mount Ski Adapter<sup>2, 19</sup>
- And More



**nismo**  
OFF ROAD

NISSAN NISMO® PARTS AND ACCESSORIES

“Too many mods,” said nobody, ever



For more information and to shop online for Frontier® Genuine Nissan NISMO Accessories, scan the code.

Nissan Frontier® Crew Cab PRO-4X® shown in Boulder Gray Pearl<sup>3</sup> with NISMO Off Road Bronze Axis Wheels, NISMO Off Road Suspension Lift Kit, NISMO Off Road High Performance Front Suspension Kit, NISMO Off Road High Performance Rear Suspension, NISMO Off Road A-Pillar Light Mounts, NISMO Off Road 4-inch Round Driving Lights, NISMO Off Road Roof Rack, NISMO Off Road Storage Cases,<sup>2</sup> NISMO Off Road High Overlanding Rack, NISMO Off Road Rooftop Tent, Off-Road Step Rails, PRO-4X Mud Flaps, and Rear Bumper Step.

CHOOSE YOUR ACCESSORIES

**A. NISMO Off Road Rock Rails**

Engineered for rugged protection, the Off Road Rock Rails deliver hard-edged durability, guarding your vehicle against challenging terrain.

**B. NISMO Off Road Rooftop Tent**

Whether you're camping, overlanding, tailgating, or photographing wildlife, the Off Road Rooftop Tent is there to amplify the journey.

**C. NISMO Off Road Spare Tire Carrier**

Cut the clutter. The off-road carrier keeps your spare on the outside — securely stashed and out of your way.

**D. NISMO Off Road Low Overlanding Rack**

Enjoy having all your gear organized and stored, along with enhanced off-road capability, with an Off Road Low Overlanding Rack.

**E. NISMO Off Road Cat-Back Exhaust**

With a sporty and deep-sounding exhaust tone, this exhaust system delivers without excessive cabin noise or droning.

**F. NISMO Off Road Roof Rack and NISMO Off Road Storage Cases (sold separately)<sup>2</sup>**

Rugged, low-profile rack adds style while offering a practical storage solution with durable storage cases for all your adventure equipment.

**G. NISMO Off Road Suspension Lift Kit**

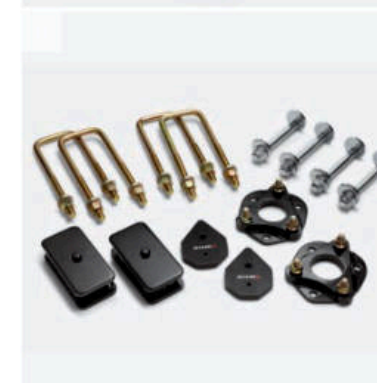
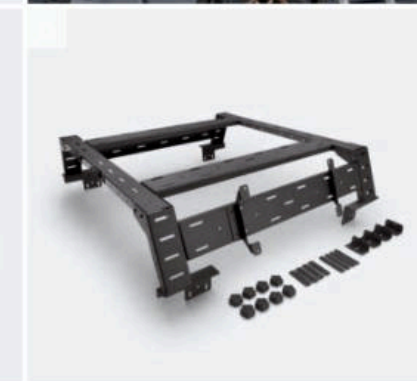
Get more clearance, improved tire fitment, and a more aggressive look for your Frontier with this lift kit.

**H. NISMO Off Road Graphite Axis Wheels**

Meet the new, rally-proven NISMO Off Road Axis alloy wheel.

**Additional Accessories:**

- NISMO Off Road 6-inch LED Driving Light Set
- NISMO Off Road Forged Upper Control Arms
- NISMO Off Road Hood Graphic
- And More



# SPECIFICATIONS

Engine	King Cab <sup>®</sup>		Crew Cab		
	S	S	SV	PRO-X <sup>®</sup>	PRO-4X <sup>®</sup>
3.8-liter Direct Injection Gasoline (DIG) DOHC 24-valve V6 engine Horsepower — 310 hp @ 6,400 rpm Torque — 281 lb-ft of torque @ 4,400 rpm	■	■	■	■	■

Drivetrain					
9-speed automatic transmission	■	■	■	■	■
Switch-operated 2-speed transfer case 4x4 <sup>23</sup>	□	□	□		■
Terrain Mode Selector w/ four modes			□		■
Electronic locking rear differential				■	■
Tow-Haul Mode switch			C1	■	■

Brakes					
Front and rear vented disc brakes	■	■	■	■	■
4-wheel Anti-lock Braking System (ABS)	■	■	■	■	■
Electronic Brake force Distribution (EBD)	■	■	■	■	■
Brake Assist <sup>10</sup>	■	■	■	■	■

Suspension/Steering					
Independent double-wishbone front suspension with stabilizer bar	■	■	■	■	■
Overslung multi-leaf rear suspension with solid axle	■	■	■	■	■
Rear stabilizer bar		■	■	■	■
Bilstein <sup>®</sup> off-road performance shock absorbers				■	■

Driver Assistance Technologies					
Intelligent Cruise Control <sup>10</sup>	■	■	■	■	■
Intelligent Forward Collision Warning <sup>10</sup>	■	■	■	■	■
Automatic Emergency Braking with Pedestrian Detection <sup>10</sup>	■	■	■	■	■
Lane Departure Warning <sup>10</sup>	■	■	■	■	■
Blind Spot Warning <sup>10</sup>	■	■	■	■	■
Rear Cross Traffic Alert <sup>10</sup>	■	■	■	■	■
RearView Monitor <sup>10</sup>				■	■
Intelligent Around View <sup>®</sup> Monitor <sup>10</sup>				C2	
Intelligent Around View <sup>®</sup> Monitor with Off-Road Mode <sup>10</sup>					C2
Rear Sonar System <sup>10</sup>	■	■	■	■	■
Rear Automatic Braking <sup>10</sup>	■	■	■	■	■
High Beam Assist	■	■	■	■	■
Hill start assist	■	■	■	■	■
Hill descent control <sup>24</sup>	□	□	□		■
Vehicle Dynamic Control (VDC) with Traction Control System (TCS) <sup>10</sup>	■	■	■	■	■
Active Brake Limited Slip (ABLS)	■	■	■	■	■
Trailer Sway Control <sup>1</sup>	■	■	■	■	■
Intelligent Driver Alertness <sup>10</sup>	■	■			
Traffic Sign Recognition <sup>17</sup>				P2	P2

Wheels/Tires					
16" Styled steel wheels	■				
16" Aluminum-alloy wheels		■			
17" Aluminum-alloy wheels			■		
17" Dark aluminum-alloy wheels				DA	

Wheels/Tires (continued)	King Cab <sup>®</sup>		Crew Cab		
	S	S	SV	PRO-X <sup>®</sup>	PRO-4X <sup>®</sup>
17" PRO aluminum-alloy wheels				■	■
265/70R16 All-season tires	■	■			
265/65R17 All-season tires			■		
265/70R17 All-terrain tires				■	■

Chassis					
Body-on-frame construction	■	■	■	■	■
Full-length, fully boxed ladder frame	■	■	■	■	■

Exterior Features					
Front skid plate	■	■	■	■	■
Skid plates — oil pan, fuel tank, 4x4 transfer case					■
Intelligent Auto Headlights	■	■	■	■	■
LED headlights	■	■	■		
LED signature headlights, LED Daytime Running Lights, and LED fog lights				■	■
LED taillights	■	■	■	■	■
Front tow hooks <sup>16</sup>	□	□	□		
Black front grille	■	■	■	■	■
Dark front grille				DA	
Upper body-color/lower black front bumper	■	■	DA	■	■
Upper body-color/lower silver front bumper				■	
Body-color rear bumper				■	■
Black rear bumper	■	■			
Black overfenders				■	■
Black door handles and outside mirrors	■	■			
Body-color door handles and outside mirrors				■	■
Dark mirror caps				DA	
Dual power outside mirrors				C1	C2
Heated outside mirrors					
Rear access doors	■				
Four full-size doors		■	■	■	■
Power sliding glass moonroof with tilt feature				P2	P2
Sliding rear window	■	■	■	■	■
Class IV tow hitch receiver with wiring harness <sup>1</sup>				C1	C2
Long Bed				LB	LB
Utili-track <sup>®</sup> Channel System with two adjustable tie-down cleats <sup>2</sup>			C1	C2	C2
Factory-applied spray-on bedliner	U	U	C1	C2	C2
Bed-mounted 120-volt AC power outlet <sup>13</sup>	U	U			
Dampened assist tailgate	■	■	■	■	■
Tailgate finisher				■	■
Overhead cargo bed lights	■	■	■	■	■
LED under-rail bed lighting				C1	C2
Dark FRONTIER tailgate lettering				DA	

Comfort/Convenience					
Air conditioning	■	■	■		
Dual Zone Automatic Temperature Control			AW/C1	■	■
Rear Door Alert <sup>25</sup>	■	■	■	■	■
Remote keyless entry with push button ignition	■	■	■		
Nissan Intelligent Key <sup>®</sup> with Push Button Ignition			AW/C1	■	■

Comfort/Convenience (continued)	King Cab <sup>®</sup>		Crew Cab		
	S	S	SV	PRO-X <sup>®</sup>	PRO-4X <sup>®</sup>
Remote Engine Start System with Intelligent Climate Control <sup>6</sup>			AW/C1	■	■
Auto-dimming rearview mirror with HomeLink <sup>®</sup> Universal Transceiver				P2	P2
Locking glove box			C1	■	■
Front map lights and rear room lamp	■	■	■		
LED front map lights and rear room lamp				■	■
12-volt DC power outlet <sup>26</sup>	■	■	■	■	■
120-volt AC power outlet in rear center console <sup>13</sup>	U	U	C1	C2	C2
Second-row under-seat storage	■		■	■	■
Overhead console with sunglasses storage	■	■	■	■	■

Seating/Appointments					
6-way manual driver's seat	■	■			
8-way power driver's seat, with 2-way power lumbar support			■	■	■
4-way manual front-passenger's seat	■	■	■		
4-way power passenger's seat				■	■
Forward-facing rear flip-up seats	■				
60/40-split flip-up rear bench seat		■	■	■	■
Cloth seat trim	■	■			
PRO embroidered cloth seats				■	■
Leather-appointed seats				P2	P2
Heated front seats			AW/C1	■	■
Heated leather-wrapped steering wheel			AW/C1	■	■
Lava Red interior accents				■	■
Dark interior accents and headliner			DA		
PRO-4X <sup>®</sup> carpeted floor mats					■

Infotainment					
7" Advanced Drive-Assist <sup>®</sup> Display <sup>14</sup>	■	■	■	■	■
NissanConnect <sup>®</sup> 8" color touch-screen display <sup>7</sup>	■	■			
NissanConnect <sup>®</sup> 12.3" color touch-screen display <sup>7</sup>			■	■	■
Nissan Door to Door Navigation with Premium Traffic <sup>9</sup>				P2	P2
NissanConnect <sup>®</sup> Services powered by SiriusXM <sup>®</sup> with trial access to 5-year Select and 1-year Premium packages <sup>7</sup>	■	■	■	■	■
Apple CarPlay <sup>®</sup> integration <sup>6,7</sup>	■	■			
Wireless Apple CarPlay <sup>®</sup> integration <sup>6,7</sup>	■	■	■	■	■
Android Auto <sup>™</sup> compatibility <sup>6,7</sup>	■	■			
Wireless Android Auto <sup>™</sup> compatibility <sup>6,7</sup>			■	■	■
Wi-Fi Hotspot <sup>7</sup>	■	■	■	■	■
SiriusXM <sup>®</sup> Traffic and Travel Link with 3-month trial access <sup>7</sup>				P2	P2
AM/FM audio system with four speakers	■	■			
AM/FM audio system with six speakers				■	■
Fender <sup>®</sup> premium audio system with 10 speakers, including subwoofers				P2	P2
One USB-A port and one USB-C port <sup>6</sup>	■	■			
Two USB-A ports and two USB-C ports <sup>6</sup>			■	■	■
Wireless charger				C2	C2
SiriusXM <sup>®</sup> w/ 3-month trial subscription included <sup>7</sup>			■	■	■

Safety	King Cab <sup>®</sup>		Crew Cab		
	S	S	SV	PRO-X <sup>®</sup>	PRO-4X <sup>®</sup>
Nissan Advanced Air Bag System with dual-stage supplemental front air bags with seat-belt and occupant-classification sensors <sup>27</sup>	■	■	■	■	■
Driver and front-passenger seat-mounted side-impact supplemental air bags <sup>27</sup>	■	■	■	■	■
Roof-mounted curtain supplemental air bags for side-impact with rollover sensor <sup>27</sup>	■	■	■	■	■
Driver and front-passenger supplemental knee air bags <sup>27</sup>	■	■	■	■	■

## CAPACITIES/TOWING/PAYLOAD/MPG

Capacities	King Cab	Crew Cab
Seating capacity	4	5
Interior passenger volume (cu. ft.)	85.6	100.1 <sup>28</sup>
Fuel tank (gals.)	21	21

### Maximum Towing — Lbs.<sup>12</sup>

	S	SV	PRO-X	PRO-4X
King Cab 4x2	7,150	-	-	-
King Cab 4x4	7,000	-	-	-
Crew Cab 4x2	7,070	7,000	6,900	-
Crew Cab 4x4	6,960	6,880	-	6,680
Crew Cab Long Bed 4x2	-	6,920	-	-
Crew Cab Long Bed 4x4	-	6,760	-	6,270

### Maximum Payload — Lbs.<sup>11</sup>

	S	SV	PRO-X	PRO-4X
King Cab 4x2	1,590	-	-	-
King Cab 4x4	1,430	-	-	-
Crew Cab 4x2	1,490	1,480	1,430	-
Crew Cab 4x4	1,330	1,310	-	1,220
Crew Cab Long Bed 4x2	-	1,400	-	-
Crew Cab Long Bed 4x4	-	1,200	-	1,100

### 2026 EPA Fuel Economy Estimates<sup>29</sup>

City/Hwy/Combined mpg	
4x2	19/24/21
4x4 (PRO-4X)	17/21/19 (16/20/18)

## NISSAN ROADSIDE ASSISTANCE

Your peace of mind is on us. For 36 months or 36,000 miles, whichever comes first, your new Nissan is covered for the following:<sup>30</sup>

- Flat-tire changes
- Trip Interruption benefits
- Jump starts
- Vehicle lockouts
- Emergency fuel delivery

visit [NissanUSA.com/frontier](https://www.nissanusa.com/frontier)

PRINTED IN USA

■ Standard □ Optional U S Utility Package AW All-Weather Package DA Dark Armor™ Package C1 SV Convenience Package C2 PRO Convenience Package LB Crew Cab Long Bed P2 PRO Premium Package