



Innovation that excites

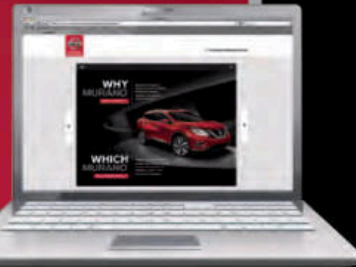
2017  
GT-R®

### SWIPE FOR MORE INFO

Download the Interactive Brochure Hub app on your tablet and you'll have GT-R® and the whole Nissan lineup at your fingertips. Get the full product story enhanced with interactive demos and videos, plus complete info on trim levels, colors, accessories, and more.



Nissan Interactive Brochure Hub available free on the App Store® and Google Play.®



Or go to [NissanUSA.com](http://NissanUSA.com) to view on your desktop.

### NISSAN ROADSIDE ASSISTANCE

Your peace of mind is on us. For 36 months or 36,000 miles, whichever comes first, your new Nissan is covered for the following:¹

- Flat-tire changes
- Jump starts
- Trip Interruption benefits
- Vehicle lockouts
- Emergency fuel delivery



Innovation that excites

Follow Nissan on:



visit [NissanUSA.com/GT-R](http://NissanUSA.com/GT-R)

¹Roadside Assistance and Trip Interruption available during the first 36 months or 36,000 miles (whichever occurs first) after initial new vehicle delivery. Restrictions apply. See Owner's Manual for details. The App Store® is a registered trademark of Apple, Inc. All rights reserved. Facebook® is a registered trademark of Facebook, Inc. Google Play® is a registered trademark of Google, Inc. Twitter® is a registered trademark of Twitter, Inc. YouTube® is a registered trademark of Google Inc.

PRINTED IN USA

**TAKE ON** convention. Question everything. Break the rules. Start with an obsession to detail and a radical belief that a real supercar delivers performance in real-world conditions. Anytime. Anywhere. Make it so refined, anyone can drive it.<sup>1</sup> Yet so capable, in the right hands it can turn the automotive world on its ear. Build a legend on world-beating performance and then – start over again. The new 2017 Nissan GT-R.<sup>®</sup> Because the competition we most love to beat is **THE STATUS QUO**.



Nissan GT-R<sup>®</sup> Premium shown in Blaze Metallic.

<sup>1</sup>Driving is serious business and requires your full attention. At all times, obey traffic laws. Not intended for unpaved off-road use. Always wear your seat belt, and please don't drink and drive.



### A SHARPER FOCUS ON DRIVING

Taking advantage of the capabilities of Nissan GT-R® requires your attention, but it should never feel like information overload. The GT-R's redesigned dashboard reduces the number of integrated navigation and audio controls by more than half, and makes access and use simpler and more intuitive, giving you more time to focus on what's important – the pure enjoyment of the drive.

5 customizable performance screens

Display Commander media controller

Steering wheel-mounted paddle shifters

### MASTERY AT EVERY TOUCHPOINT

The GT-R's redesigned interior is a masterful blend of premium materials, from hand-stitching in the cabin to a dashboard pad created from a single, hand-selected Nappa leather hide. Seats redesigned for added comfort and support make an ideal place to enjoy even the smallest details, like aluminum bezels' subtle etching to enhance their feel.

Carbon-fiber interior accents

Hand-stitched leather-appointed interior trims

Machined aluminum interior accents



### HANDCRAFTED PERFORMANCE

Each GT-R engine is assembled by a single craftsman – called "Takumi" – renowned for their dedication and mastery. And with only five Takumi in the world entrusted with the honor, the plaque on the engine bearing their name has true significance. As one of the Takumi says, "We put our souls into each engine, hoping to deliver that excitement to customers."

# 565HP



## THE LEGEND. REFINED.



### AERODYNAMIC ALCHEMY

Rather than being confined by the demands of aerodynamics, the Nissan GT-R sculpts the air to its needs – becoming a force of nature, as much as a force to be reckoned with. Every aerodynamic detail was considered. A 1% energy loss around the C-pillar was enough for the GT-R's fanatical engineers to redesign the pillar to create a cleaner design.

# .26Cd

**NISSAN GT-R® NISMO®**

**SIMPLY THE DOMINANT  
SUPERCAR OF ITS TIME**

**600 HP**

**nismo®**

Pure. Undiluted. Awe-inducing. With 600 horsepower of fury combined with unmatched control. From its high-capacity turbos to its specially tuned suspension, this is the ultimate GT-R.

On the outside, aggressive aerodynamic design adds a unique rear spoiler and carbon-fiber bumpers, trunk lid, and side sills. Subtle yet special, contrasting dark gray mirrors feature a red accent stripe. The entire body sits poised over unique front and rear alloy wheels, wearing specially developed Dunlop® tires.

Inside is just as focused, with Recaro® seats, an Alcantara®-wrapped steering wheel with red leather stripe at 12 o'clock, and a signature NISMO red throughout the cabin, including the seatbacks, tachometer face, shift lever, and door handle pulls.

**481 lb-ft of torque**

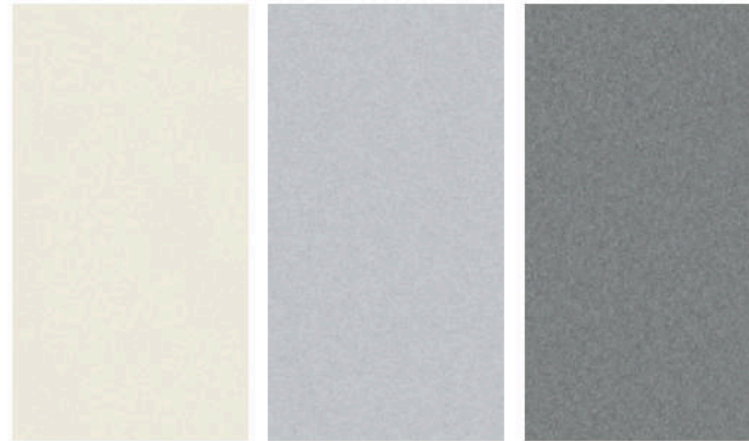
**0.26 coefficient of drag**

**NISMO unique 6-spoke wheels**

**NISMO carbon-fiber body kit**

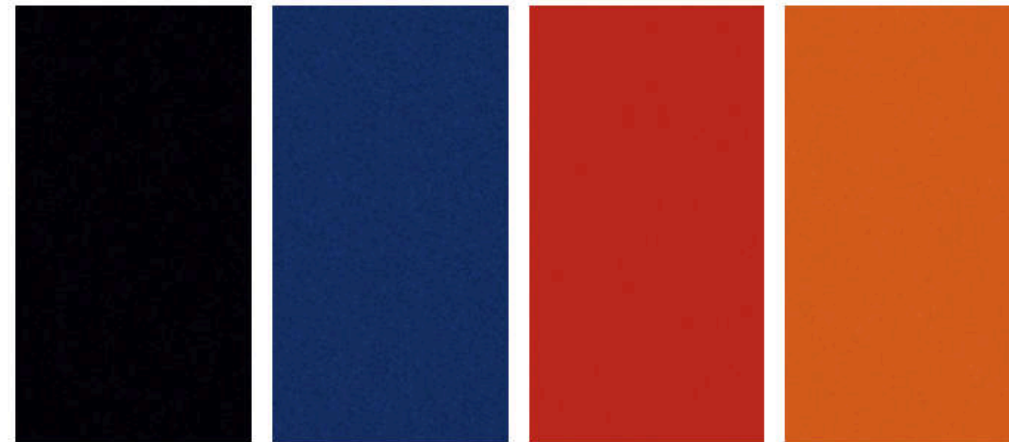


## CHOOSE YOUR COLOR



Pearl White<sup>1</sup> QAB      Super Silver<sup>1</sup> KAB      Gun Metallic KAD

	PREMIUM	NISMO <sup>®</sup>	PREMIUM	NISMO <sup>®</sup>	PREMIUM	NISMO <sup>®</sup>
BLACK LEATHER	<input checked="" type="checkbox"/>		<input checked="" type="checkbox"/>		<input checked="" type="checkbox"/>	
IVORY LEATHER <sup>1</sup>	<input type="checkbox"/>				<input type="checkbox"/>	
RAKUDA TAN LEATHER <sup>1</sup>	<input type="checkbox"/>					
RED AMBER LEATHER <sup>1</sup>	<input type="checkbox"/>		<input type="checkbox"/>		<input type="checkbox"/>	
BLACK/RED LEATHER		<input checked="" type="checkbox"/>		<input checked="" type="checkbox"/>		<input checked="" type="checkbox"/>



Jet Black GAG      Deep Blue Pearl RAY      Solid Red A54      Blaze Metallic<sup>1</sup> EBG

	PREMIUM	NISMO <sup>®</sup>	PREMIUM	NISMO <sup>®</sup>	PREMIUM	NISMO <sup>®</sup>	PREMIUM	NISMO <sup>®</sup>
BLACK LEATHER	<input checked="" type="checkbox"/>		<input checked="" type="checkbox"/>		<input checked="" type="checkbox"/>		<input checked="" type="checkbox"/>	
IVORY LEATHER <sup>1</sup>	<input type="checkbox"/>		<input type="checkbox"/>		<input type="checkbox"/>		<input type="checkbox"/>	
RAKUDA TAN LEATHER <sup>1</sup>	<input type="checkbox"/>		<input type="checkbox"/>		<input type="checkbox"/>		<input type="checkbox"/>	
RED AMBER LEATHER <sup>1</sup>	<input type="checkbox"/>		<input type="checkbox"/>				<input type="checkbox"/>	
BLACK/RED LEATHER		<input checked="" type="checkbox"/>		<input checked="" type="checkbox"/>		<input checked="" type="checkbox"/>		<input checked="" type="checkbox"/>

Standard  
 Optional  
<sup>1</sup>Extra cost option.

Nissan has taken care to ensure that the color swatches presented here are the closest possible representations of actual vehicle colors. Swatches may vary slightly due to the printing process and whether viewed in daylight, fluorescent or incandescent light. Please see the actual colors at your local Nissan dealer.

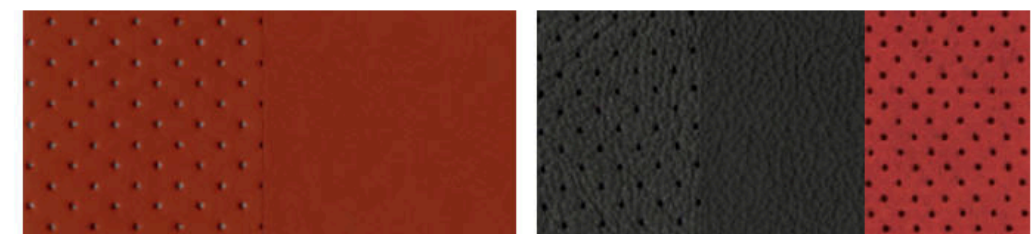
## CHOOSE YOUR INTERIOR



GT-R<sup>®</sup> Premium shown in Rakuda Tan Semi-aniline Leather.



Black Leather/Synthetic-suede Inserts Premium      Ivory Semi-aniline Leather<sup>1</sup> Premium Interior Package      Rakuda Tan Semi-aniline Leather<sup>1</sup> Premium Interior Package



Red Amber Semi-aniline Leather<sup>1</sup> Premium Interior Package      Black Leather/Red Synthetic-suede Inserts NISMO<sup>®</sup>

## CHOOSE YOUR TRIM LEVEL

### PREMIUM

- 3.8-liter twin-turbocharged V6 engine
- Dual-clutch 6-speed transmission
- ATTESA E-TS® All-Wheel Drive
- 20" Super-lightweight RAYS® forged-alloy wheels
- Dunlop® SP Sport MAXX GT600 DSST CTT high-performance run-flat tires
- Nissan/Brembo® braking system
- Bilstein® DampTronic® suspension system
- Advanced Vehicle Dynamic Control (VDC)<sup>1</sup> with three driver-selectable modes
- Multi-LED headlights with signature lighting
- Titanium exhaust with exhaust sound control
- NissanConnect™ with Navigation and Mobile Apps and Services, including 8.0" multi-touch control color monitor<sup>2</sup>
- Driver-configurable Multi-Function Display system
- Leather-appointed front seats with synthetic suede inserts
- Titanium exhaust with exhaust sound control
- Bose® audio system
- 11 Speakers, including dual subwoofers
- Active Noise Cancellation (ANC)
- Active Sound Enhancement (ASE)

### KEY AVAILABLE PACKAGES:

- Premium Interior Package
- Cold Weather Package



### GT-R® NISMO® INCLUDES PREMIUM EDITION EQUIPMENT PLUS:

- NISMO-tuned 600-hp, 3.8-liter, high-capacity twin-turbocharged V6 engine
- NISMO-tuned suspension
- NISMO-tuned 17.3-mm hollow rear stabilizer bar
- NISMO black 20" super-lightweight RAYS® forged-alloy wheels
- NISMO aerodynamic body design – carbon-fiber front and rear fascia, side sills, and rear spoiler
- Carbon-fiber trunk lid
- NISMO tachometer
- NISMO Recaro® leather-appointed front seats with red synthetic suede inserts
- NISMO Black/Red interior treatment
- NISMO Alcantara®-wrapped steering wheel and gauge hood



Images may show additional available equipment. <sup>1</sup>VDC, which should remain on when driving except when freeing the vehicle from mud or snow, cannot prevent accidents due to abrupt steering, carelessness, or dangerous driving techniques. <sup>2</sup>Driving is serious business. Only use NissanConnect™ Services powered by SiriusXM® and NissanConnect™ Mobile Apps when safe to do so. NissanConnect™ Services and Mobile Apps availability is dependent on vehicle model, trim level, packaging, and/or options. See [NissanUSA.com/connect](http://NissanUSA.com/connect) for complete availability details. Late availability for some features. Compatible smartphone required to operate NissanConnect™ Mobile Apps. NissanConnect™ Services, including automatic crash notification and SOS, are dependent upon the telematics device being in operative condition, its ability to connect to a wireless network, compatible wireless network availability, navigation map data, and GPS satellite signal receptions, the absence of which can limit or prevent the ability to reach NissanConnect Customer Care or receive support. Never program while driving. GPS mapping may not be detailed in all areas or reflect current road status. You are responsible for using Remote Engine Start and Remote Horn features in accordance with any laws, rules or ordinances in effect in your vehicle's location. Cellular network not available in all areas and/or at all times.

Cellular technology is evolving, and changes to cellular networks provided by independent companies are not within Nissan's or Sirius XM Radio Inc.'s control. Neither Nissan nor Sirius XM are responsible for associated costs that may be required for continued operation due to cellular network termination (including equipment upgrades, if available, or roaming charges on alternative networks). Should cellular provider terminate/restrict service, service may be terminated without notice and with no liability to Nissan, Sirius XM and/or their respective agents or affiliates. Certain services require a PIN for activation. Enrollment and Subscription Agreement is required to receive full suite of NissanConnect Services. Text rates and/or data usage may apply. See [NissanUSA.com/connect](http://NissanUSA.com/connect) for details. Alcantara® is a registered trademark of Alcantara S.p.A. Corporation. Bilstein® and DampTronic® are registered trademarks of ThyssenKrupp Bilstein GmbH. Bose® is a registered trademark of The Bose Corporation. Brembo® is a registered trademark of Pirelli Brembo S.p.A. Dunlop® is a registered trademark of DNA Ltd. Corporation. RAYS® is a registered trademark of RAYS Engineering. Recaro® is a registered trademark of Recaro North America Inc.

## BECAUSE YOU'RE NOT DRIVING A CAR, YOU'RE DRIVING A LEGEND

Every Genuine Nissan Accessory is custom-fit, custom-designed and durability-tested. Each one is also backed by Nissan's 3-year/36,000-mile (whichever occurs first) limited warranty (if installed by dealer at the time of purchase).<sup>1</sup> Plus, they can be financed when installed by the dealer at the time of purchase.

**GT-R® Genuine Branded Merchandise** includes apparel, lifestyle, and sports and leisure equipment to show your passion wherever you – and your GT-R – go.

**A. Premium Sport Floor Mats with Carbon-fiber Inserts**

The ultimate mat for the ultimate supercar.

**B. GT-R Driving Shirt**

Designed with mesh knit side panels to keep you as cool as you look.

**C. Vehicle Cover<sup>2</sup>**

Custom-tailored for your GT-R, with a stretch satin custom cover for a perfect fit and a soft fleece inner liner to protect the finish. Available in gray or black.

**D. Chrome Jack with GT-R Logo**

Exquisitely detailed, it will give you a lift every time you look at it.

**E. GT-R Carpeted Floor Mats**

Preserve and protect your GT-R.

**F. Nissan Valve Stem Caps**

Show your Nissan pride.

**G. Wheel Locks**

Four Wheel Locks and coded Wheel Lock Socket keep your wheels out of the wrong hands.

**Additional Accessories:**

- Standard Tool Kit
- Emergency Road Kit
- Vehicle Cover Cable Lock

For more information and to shop online for GT-R Genuine Nissan Accessories, go to [bit.ly/17GTR-estore](http://bit.ly/17GTR-estore)



## SPECIFICATIONS

Engine	Premium	GT-R® NISMO®
VR38DETT – 3.8-liter twin-turbocharged 24-valve V6	■	
– Horsepower – 565 horsepower @ 6,800 rpm		
– Torque – 467 lb-ft of torque @ 3,300–5,800 rpm		
NISMO-tuned VR38DETT – 3.8-liter high-capacity twin-turbocharged 24-valve V6		■
– Horsepower – 600 horsepower @ 6,800 rpm		
– Torque – 481 lb-ft of torque @ 3,600–5,800 rpm		
Special 50:50 coolant mix	C	

Drivetrain	Premium	GT-R® NISMO®
ATTESA E-TS® All-Wheel Drive (AWD) with patented independent rear-mounted transaxle	■	■
Advanced Vehicle Dynamic Control (VDC)	■	■
Electronic Traction Control System (TCS)	■	■
Dual-clutch 6-speed transmission with paddle shifters	■	■
Downshift Rev Matching	■	■
1.5-way mechanical limited-slip rear differential	■	■
Hill start assist	■	■

Brakes	Premium	GT-R® NISMO®
Nissan/Brembo® braking system – 4-wheel disc brakes, 15.4" front and 15.0" rear two-piece floating-rotors with diamond-pattern internal ventilation	■	■
Super-rigid 6-piston front/4-piston rear monoblock calipers	■	■
4-wheel Anti-lock Braking System (ABS)	■	■
Electronic Brake force Distribution (EBD)	■	■

Suspension/Steering	Premium	GT-R® NISMO®
Double-wishbone front suspension with aluminum arms	■	■
Multi-link rear suspension with aluminum arms	■	■
Rigid front and rear suspension subframes, assembled in high-precision jigs similar to a racecar, with 6-point mounting	■	■
Bilstein® DampTronic® suspension system	■	■
NISMO-tuned suspension		■
Hollow front and rear stabilizer bars	■	■
NISMO-tuned 17.3 mm hollow rear stabilizer bar		■
Vehicle-speed-sensitive power steering	■	■
2.4 Steering-wheel turns lock-to-lock	■	■

Wheels/Tires	Premium	GT-R® NISMO®
Super-lightweight RAYS® forged-alloy wheels: 20" x 9.5" (front) 20" x 10.5" (rear)	■	
NISMO black super-lightweight RAYS® forged-alloy wheels: 20" x 10.0" (front) 20" x 10.5" (rear)		■
Exclusively developed tires, <sup>1</sup> nitrogen-filled at factory: 255/40ZRF20 (front) 285/35ZRF20 (rear)	■	■
Dunlop® SP Sport MAXX GT600 DSST CTT high-performance run-flat tires <sup>1</sup>	■	■
Dunlop® SP Sport 7010 all-season run-flat tires	C	

■ Standard  
□ Optional  
P Part of Premium Interior Package  
C Part of Cold Weather Package

Chassis/Body	Premium	GT-R® NISMO®
Premium Midship (PM) platform with hybrid unibody	■	■
Aluminum hood and outer door skins	■	■
Aluminum trunk lid	■	
Carbon-fiber trunk lid		■
Die-cast aluminum front shock towers and inner door structures	■	■
Carbon-fiber engine chassis brace	■	■
Carbon-composite front crossmember/radiator support	■	■
Body bonding to key spot welds		■

Exterior Features	Premium	GT-R® NISMO®
Aerodynamic undertrays	■	■
Body-color rear spoiler	■	
NISMO aerodynamic body design – carbon-fiber front and rear fascia, side sills, and rear spoiler		■
Multi-LED headlights with signature lighting	■	■
LED Daytime Running Lights and LED taillights	■	■
Titanium exhaust with exhaust sound control	■	■

Comfort/Convenience	Premium	GT-R® NISMO®
NissanConnect <sup>SM</sup> with Navigation and Mobile Apps and Services, including 8.0" multi-touch color monitor <sup>3</sup>	■	■
Voice Recognition for audio and navigation	■	■
Display Commander	■	■
SiriusXM® Traffic and Travel Link® with 3-month trial subscription <sup>4</sup>	■	■
Driver-configurable Multi-Function Display system	■	■
RearView Monitor	■	■
Front and Rear Sonar System	■	■
Nissan Intelligent Key® with Push Button Ignition	■	■
NISMO tachometer		■
Bluetooth® Hands-free Phone System <sup>5</sup>	■	■
HomeLink® Universal Transceiver	■	■
Dual Zone Automatic Temperature Control (ATC)	■	■

Seating/Appointments	Premium	GT-R® NISMO®
Leather-appointed front seats with synthetic suede inserts	■	
Hand-stitched semi-aniline leather-appointed front seats	P	
NISMO Recaro® leather-appointed front seats with synthetic suede inserts		■
Heated front seats	■	■
Hand-stitched semi-aniline leather interior treatments	P	
NISMO Black/Red interior treatment		■
NISMO Alcantara®-wrapped steering wheel and gauge hood		■
Aluminum-trimmed pedals	■	■

Audio/Entertainment	Premium	GT-R® NISMO®
Bose® audio system with 11 speakers, including dual subwoofers	■	■
Active Noise Cancellation (ANC) and Active Sound Enhancement (ASE)	■	■
SiriusXM® Satellite Radio <sup>4</sup>	■	■
HD Radio®	■	■
2 USB connection ports	■	■
Streaming audio via Bluetooth® wireless technology <sup>5</sup>	■	■
Steering wheel-mounted audio controls	■	■
Speed-sensitive volume control	■	■

Safety/Security	Premium	GT-R® NISMO®
Nissan Advanced Air Bag System with dual-stage supplemental front air bags with seat belt and occupant-classification sensors	■	■
Driver and front-passenger side-impact supplemental air bags	■	■
Roof-mounted curtain side-impact supplemental air bags for front occupant head protection	■	■
Front seat belts with pretensioners and load limiters	■	■
LATCH System (Lower Anchors and Tethers for CHildren)	■	■
Zone Body construction with front and rear crumple zones	■	■
Hood-buckling creases and energy-absorbing steering column	■	■
Tire Pressure Monitoring System (TPMS) with individual tire pressure display	■	■
Nissan Vehicle Immobilizer System	■	■
Vehicle Security System	■	■

## PACKAGES

**P Premium Interior Package**  
Hand-stitched Semi-Aniline Leather interior treatments  
Hand-stitched Semi-Aniline Leather-appointed front seats

**C Cold Weather Package**  
Special 50:50 coolant mix  
Dunlop® SP Sport 7010 all-season run-flat tires

<sup>1</sup>Always use appropriate tires for weather conditions. See Owner's Manual for details. Failure to use appropriate tires could cause an accident resulting in serious injury or death. <sup>2</sup>Dry carbon-fiber requires specific maintenance. Please see your Owner's Manual for details. <sup>3</sup>Driving is serious business. Only use NissanConnect<sup>SM</sup> Services powered by SiriusXM® and NissanConnect<sup>SM</sup> Mobile Apps when safe to do so. NissanConnect<sup>SM</sup> Services and Mobile Apps availability is dependent on vehicle model, trim level, packaging, and/or options. See [NissanUSA.com/connect](http://NissanUSA.com/connect) for complete availability details. Late availability for some features. Compatible smartphone required to operate NissanConnect<sup>SM</sup> Mobile Apps. NissanConnect<sup>SM</sup> Services, including automatic crash notification and SOS, are dependent upon the telematics device being in operative condition, its ability to connect to a wireless network, compatible wireless network availability, navigation map data, and GPS satellite signal receptions, the absence of which can limit or prevent the ability to reach NissanConnect Customer Care or receive support. Never program while driving. GPS mapping may not be detailed in all areas or reflect current road status. You are responsible for using Remote Engine Start and Remote Horn features in accordance with any laws, rules or ordinances in effect in your vehicle's location. Cellular network not available in all areas and/or at all times. Cellular technology is evolving, and changes to cellular networks provided by independent companies are not within Nissan's or Sirius XM Radio Inc.'s control. Neither Nissan nor Sirius XM are responsible for associated costs that may be required for continued operation due to cellular network termination (including equipment upgrades, if available, or roaming charges on alternative networks). Should cellular provider terminate/restrict service, service may be terminated without notice and with no liability to Nissan, Sirius XM and/or their respective agents or affiliates. Certain services require a PIN for activation. Enrollment and Subscription Agreement is required to receive full suite of NissanConnect Services. Text rates and/or data usage may apply. See [NissanUSA.com/connect](http://NissanUSA.com/connect) for details. <sup>4</sup>Required monthly subscriptions

## DIMENSIONS/CAPACITIES/WEIGHTS/MPG

Dimensions	Premium	GT-R NISMO
<b>Exterior – inches</b>		
Wheelbase	109.4	
Overall length	185.4; 184.6 GT-R NISMO	
Overall width	74.6	
Overall height	53.9	
Track width (front/rear)	62.6/63.0; 63.0/63.0 GT-R NISMO	

**Aerodynamics – Cd**  
Drag coefficient 0.26

**Interior (front/rear) – inches**

Head room	38.1/33.5
Hip room	54.7/44.9
Leg room	44.6/26.4
Shoulder room	54.3/50.0

**Capacities**

Interior passenger volume (cu. ft.)	79.0
Cargo volume (cu. ft.)	8.8
Fuel tank (gals.)	19.5

**Curb Weights – Lbs.**

	Premium	GT-R NISMO
Base total	3,933	3,911
Weight distribution	54/46	54/46

### 2017 EPA Fuel Economy Estimates

City/highway/combined MPG 16/22/18

Actual mileage may vary with driving conditions – use for comparison only.

sold separately for each available SiriusXM feature after trial period, and are continuous until you call SiriusXM to cancel. Installation costs, one-time activation fee, other fees and taxes will apply. Each SiriusXM feature availability is dependent upon vehicle model, trim level, packaging, and/or options, and may only be available in select markets. Satellite Radio U.S. service, NavWeather® service, and SiriusXM® Travel Link® services (if any of the foregoing features are equipped on vehicle) available only to those 18 or older in the 48 contiguous states and D.C. Fees and programming subject to change. Subscriptions governed by Customer Agreement available at [siriusxm.com](http://siriusxm.com). ©2016 Sirius XM Radio Inc. Sirius®, XM® and all related marks and logos are trademarks of Sirius XM Radio Inc. <sup>5</sup>Availability of specific features is dependent upon the phone's Bluetooth® support. Please refer to your phone Owner's Manual for details. Bluetooth® word mark and logos are owned by Bluetooth SIG, Inc., and any use of such marks by Nissan is under license. See [NissanUSA.com/bluetooth](http://NissanUSA.com/bluetooth) for details. Alcantara® is a registered trademark of Alcantara S.p.A. Corporation. Bilstein® and DampTronic® are registered trademarks of ThyssenKrupp Bilstein GmbH. Bose® is a registered trademark of The Bose Corporation. Brembo® is a registered trademark of Freni Brembo S.p.A. Dunlop® is a registered trademark of DNA Ltd. Corporation. HD Radio® is a registered trademark of iBiquity Digital Corporation. HomeLink® is a registered trademark of Centex Corporation. RAYS® is a registered trademark of RAYS Engineering. Recaro® is a registered trademark of Recaro North America Inc. This brochure is intended for general descriptive and informational purposes only. It is subject to change and does not constitute an offer, representation or warranty (express or implied) by Nissan North America, Inc. Interested parties should confirm the accuracy of any information in this brochure as it relates to a vehicle directly with Nissan North America, Inc., before relying on it to make a purchase decision. Nissan North America, Inc., reserves the right to make changes, at any time, without prior notice, in prices, colors, materials, equipment, specifications, and models and to discontinue models or equipment. Due to continuous product development and other pre- and post-production factors, actual vehicle, materials and specifications may vary from this brochure. Some vehicles shown with optional equipment. See the actual vehicle for complete accuracy. Availability and delivery times for particular models or equipment may vary. Specifications, options and accessories may differ in Hawaii, U.S. territories and other countries. For additional information on availability, options or accessories, see your Nissan dealer or contact Nissan North America, Inc. At [NissanUSA.com](http://NissanUSA.com), you'll find virtual product demonstrations, a way to "build your own Nissan," a dealer locator, and more information about key Nissan support services. Or if you'd prefer, call **1-800-NISSAN-3** for answers to specific questions about GT-R® or any other Nissan vehicle. The Nissan names, logos, product names, feature names, and slogans are trademarks owned by or licensed to Nissan Motor Co. Ltd. and/or its North American subsidiaries. **Always wear your seat belt, and please don't drink and drive.** ©2016 Nissan North America, Inc. 1718260-N-8/16-60M-CGI