



LEAF®

2025



¹Targeted 2025 EPA-estimated range up to 149 miles for Nissan LEAF[®] S for combined city/highway driving; up to 212 miles for Nissan LEAF SV PLUS for combined city/highway driving. Targeted 2025 EPA Fuel Economy Estimates equivalent to 123 City MPGe / 99 Highway MPGe / 111 Combined MPGe for Nissan LEAF S, 121 City MPGe / 98 Highway MPGe / 109 Combined MPGe for Nissan LEAF SV PLUS. Based on EPA formula of 33.7 kW/hour equal to one gallon of gasoline energy, and on Nissan internal testing results, subject to EPA confirmation. EPA data not available at time of publication. Targeted estimates are equivalent to 123 MPG measured as gasoline fuel efficiency in city driving, and 99 MPG in highway driving for LEAF S, 121 MPG measured as gasoline fuel efficiency in city driving, and 98 MPG in highway driving for LEAF SV PLUS. Actual mileage will vary with trim levels, options, and driving conditions. See Customer Disclosure Form for details. Use for comparison only. ²Driving is serious business and requires your full attention. If you have to use the connected device while driving, exercise extreme caution at all times so full attention may be given to vehicle operation. ³Extra cost option. ⁴ProPILOT Assist cannot prevent collisions. It is the driver's responsibility to be in control of the vehicle at all times. Always monitor traffic conditions and keep both hands on the steering wheel. System operates only when lane markings are detected. Does not function in all weather, traffic and road conditions. System has limited control capability and the driver may need to steer, brake or accelerate at any time to maintain safety. See Owner's Manual for safety information. ⁵Monitor traffic conditions and use conventional brake as needed to prevent collisions. See Owner's Manual for safety information. ⁶**Compatible device, service, and consumer activation of NissanConnect Services package required. Use only when safe and legal.** Subject to third party service availability. For more information see [NissanUSA.com/connect/legal](https://www.nissanusa.com/connect/legal). ⁷Use the text messaging feature after stopping your vehicle in a safe location. If you have to use the feature while driving, exercise extreme caution at all times so full attention may be given to vehicle operation. Compatible smartphone required. Text rates and/or data usage may apply. ⁸Never program while driving. GPS mapping may not be detailed in all areas or reflect current road status. ⁹Nissan Safety Shield technologies can't prevent all collisions or warn in all situations. See Owner's Manual for important safety information. ¹⁰Availability of features vary by vehicle model year, model, trim level, packaging, and options. Please see Owner's Manual for important feature information. ¹¹Automatic Emergency Braking with Pedestrian Detection cannot prevent all collisions and may not provide warning or braking in all conditions. Driver should monitor traffic conditions and brake as needed to prevent collisions. See Owner's Manual for safety information. ¹²Rear Automatic Braking cannot prevent all collisions and may not provide warning or braking in all conditions. Driver should always turn and check surroundings before driving and brake as needed to prevent collisions. See Owner's Manual for safety information. ¹³Rear Cross Traffic Alert may not detect all vehicles. See Owner's Manual for safety information. ¹⁴Blind Spot Warning and Intelligent Blind Spot Intervention cannot prevent all collisions and may not detect every object or warn in all situations. Driver should always turn and look before changing lanes. See Owner's Manual for safety information. ¹⁵Lane Departure Warning and Intelligent Lane Intervention only operate when lane markings are able to be detected. See Owner's Manual for safety information. ¹⁶Intelligent Forward Collision Warning cannot prevent collisions. See Owner's Manual for safety information. ¹⁷Available feature. ¹⁸Heating or cooling of the cabin while vehicle is charging may decrease range or extend charging time. See Owner's Manual for safety information. ¹⁹Charging time and capacity may vary based on power source, ambient temperature, battery temperature, condition, and age, and use of vehicle accessories while charging. For Level 1 home charging use only a 110-120 volt, 15-amp dedicated outlet for charging. For Level 2 home charging use only a 240-volt charging dock on a dedicated outlet for charging. See Customer Disclosure Form for details. ²⁰For Level 2 home charging use only a 240-volt charging dock on a dedicated outlet for charging. See Customer Disclosure Form for details. 240-V home charging dock sold separately. Not a Nissan product. Some chargers may not be compatible with your LEAF. Contact charger manufacturer before purchase for information on compatibility and warranty. Nissan does not warrant and is not responsible for loss, including consequential, incidental, or other damages caused by charger defects, charger incompatibility, or installation services. ²¹Public charging networks are provided by independent companies, and are not within Nissan's control. Availability of charging stations not guaranteed. ²²RearView Monitor may not detect every object and does not eliminate blind spots or warn of moving objects. See Owner's Manual for safety information. ²³Rear Door Alert System does not detect people or cargo. Always check rear seat before exiting. See Owner's Manual for safety information. ²⁴Intelligent Around View[®] Monitor cannot eliminate blind spots and may not detect every object. Driver should always turn and check surroundings before driving. See Owner's Manual for safety information. ²⁵Intelligent Driver.Alertness cannot provide a warning in every situation. See Owner's Manual for safety information. ²⁶For complete information concerning warranty coverage, conditions, limitations, and exclusions, see your Nissan dealer, [parts.NissanUSA.com](https://www.nissanusa.com), and read your vehicle's Warranty Information Booklet. ²⁷Zero tailpipe emissions. ²⁸Brake Assist cannot prevent all collisions and may not provide warning or braking in all conditions. Driver should monitor traffic conditions and brake as needed to prevent collisions. See Owner's Manual for safety information. ²⁹Sonar System may not detect every object. Driver should always check surroundings before driving. See Owner's Manual for safety information. ³⁰Intelligent Trace Control cannot prevent collisions or loss of control. Driver should remain in control of vehicle at all times. See Owner's Manual for safety information. ³¹Vehicle Dynamic Control cannot prevent collisions due to abrupt steering, carelessness, or dangerous driving techniques. It should remain on when driving, except when freeing the vehicle from mud or snow. See Owner's Manual for safety information. ³²Air bags are only a supplemental restraint system. Always wear your seat belt. Rear-facing child restraints should not be placed in the front-passenger's seat. All children 12 and under should ride in the rear seat properly secured in child restraints, booster seats, or seat belts according to their size. Air bags will only inflate in certain accidents. See Owner's Manual for safety information. ³³Tire Pressure Monitoring System is not a substitute for regular tire pressure checks. See Owner's Manual for safety information. ³⁴Vehicle must be on for the Easy-Fill Tire Alert to operate. ³⁵Cargo and load capacity limited by weight and distribution. Always secure cargo. ³⁶Roadside assistance coverage period varies by model year/model. For complete information concerning warranty coverage, conditions and exclusions, see your Nissan dealer and read the warranty information booklet for the model year/model. ³⁷Installation not included with Wallbox offer. For Level 2 home charging use only a 240-volt charging dock on a dedicated outlet for charging. See Customer Disclosure Form for details. 240-V home charging dock sold separately. Not a Nissan product. Contact charger manufacturer before purchase for information on compatibility and warranty. Nissan does not warrant and is not responsible for loss, including consequential, incidental, or other damages caused by charger defects, charger incompatibility, or installation services. For more details and to purchase your charger from Wallbox, please visit [NissanUSA.com/vehicles/electric-cars/home-charging.html](https://www.nissanusa.com/vehicles/electric-cars/home-charging.html). ³⁸Certain Alexa functionality is dependent on smart home technology. Amazon Alexa Skills is a trademark of Amazon.com, Inc. or its affiliates. ³⁹Driving is serious business and requires your full attention. Do not operate any devices connected to the power outlets while driving. Amazon, Alexa, Echo, and all related marks are trademarks of Amazon.com, Inc. or its affiliates. Apple CarPlay[®], Apple Music[®], Lightning[®], Siri[®], and Siri[®] Eyes Free are registered trademarks of Apple, Inc. Bluetooth[®] word mark and logos are owned by Bluetooth SIG, Inc., and any use of such marks by Nissan is under license. Google, Android, Android Auto, YouTube Music and other marks are trademarks of Google LLC. Google Assistant is not available in certain languages and countries. Compatible Android phone and compatible active data plan required. iPhone[®] is a registered trademark of Apple, Inc. All rights reserved. iPhone[®] or other external device not included. Pulsar Plus is a registered trademark of Wall Box Chargers, S.L. The Sirius[®], XM[®], and SiriusXM[®] names and all related marks and logos are trademarks of Sirius XM Radio Inc. All other trademarks are the property of their respective owners. Wallbox W is a registered trademark of Wallbox Chargers, S.L. This brochure is intended for general descriptive and informational purposes only. It is subject to change and does not constitute an offer, representation or warranty (express or implied) by Nissan North America, Inc. Interested parties should confirm the accuracy of any information in this brochure as it relates to a vehicle directly with Nissan North America, Inc., before relying on it to make a purchase decision. Nissan North America, Inc., reserves the right to make changes, at any time, without prior notice, in prices, colors, materials, equipment, specifications, and models and to discontinue models or equipment. Due to continuous product development and other pre- and post-production factors, actual vehicle, materials and specifications may vary from this brochure. Some vehicles shown with optional equipment. See the actual vehicle for complete accuracy. Availability and delivery times for particular models or equipment may vary. Specifications, options and accessories may differ in Hawaii, U.S. territories and other countries. For additional information on availability, options or accessories, see your Nissan dealer or contact Nissan North America, Inc. At [NissanUSA.com](https://www.nissanusa.com), you'll find virtual product demonstrations, a way to "build your own Nissan," a dealer locator, and more information about key Nissan support services. Or if you'd prefer, call **1-800-NISSAN-3** for answers to specific questions about the Nissan LEAF[®] or any other Nissan vehicle. The Nissan names, logos, product names, feature names, and slogans are trademarks owned by or licensed to Nissan Motor Co. Ltd. and/or its North American subsidiaries. Other trademarks and trade names are those of their respective owners. **Always wear your seat belt, and please drive responsibly.** ©2024 Nissan North America, Inc. '25 Nissan LEAF.® 2517111-N-2/24-60K-USA

The possibilities are electric

Thrill never ends with Nissan LEAF.[®] Get up to an EPA-estimated 212 miles of range on a single charge with SV PLUS models.¹ Adventure in confidence, knowing you've got an available 214-hp electric drivetrain and compatible smartphone integration² along for the ride — all with zero tailpipe emissions and a quiet drive ready for the EV journey of a lifetime.

EPA-estimated
range up to
212
miles on SV PLUS

Nissan LEAF[®] SV PLUS shown in Two-tone Pearl White TriCoat/Super Black.³



Your digital launching pad

People to see? Places to be? Just ask Siri! Equipped with Siri® voice control, standard Apple CarPlay® brings your contacts, favorite messaging apps, Apple Music® playlists, Apple Maps, and more on board your Nissan LEAF. Simply plug in your compatible iPhone® and go.^{2, 6, 7, 8}



Talk to Google Assistant on Android Auto™ and get things done with your voice. Easily send messages, get directions, control media, and more. Just say, "Hey Google" or long-press the voice control button on your steering wheel to get started.^{2, 6, 7, 8}



ProPILOT Assist⁴

With available ProPILOT Assist, your Nissan LEAF® can help out with daily highway driving — assisting you by following the car ahead at a preset distance and helping keep you centered in your lane. ProPILOT Assist can even bring you to a full stop based on traffic flow and get you back up to speed when traffic starts moving again. It all adds up to a more confident, enjoyable drive.⁴



e-Pedal technology: efficiency gets a thrill¹

Imagine having the option to drive with one pedal. Simply turn on Nissan LEAF's e-Pedal system with the flip of a switch. Then just press down for an instant rush and ease off to slow down. It's not only fun, but it also helps make your ride even more efficient.^{1, 5}



Standard Nissan Safety Shield® 360 and driver assist technologies

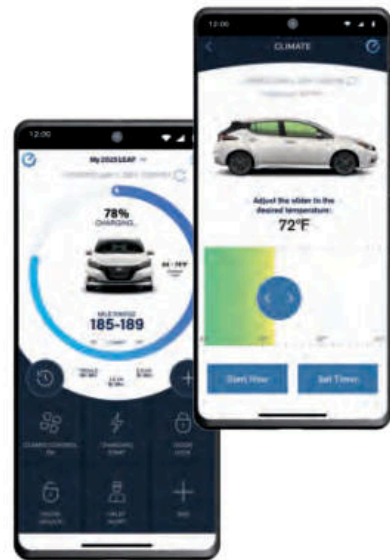
In one of the most advanced Nissan vehicles ever, you can expect confidence from an array of driver assist and safety features.^{9, 10}

- Automatic Emergency Braking with Pedestrian Detection¹¹
- Rear Automatic Braking¹²
- Rear Cross Traffic Alert¹³
- Blind Spot Warning¹⁴
- Lane Departure Warning¹⁵
- High Beam Assist

Nissan LEAF also comes standard with: Intelligent Blind Spot Intervention,¹⁴ Intelligent Lane Intervention,¹⁵ and Intelligent Forward Collision Warning.¹⁶

Get a head start on your day with NissanConnect® EV & Services

Your Nissan LEAF® is powered up and ready to go — and you haven't even touched the steering wheel. Remote connectivity is easy with the Nissan Skill for Amazon Alexa.^{17, 38} Or just use the available NissanConnect® EV & Services app on your compatible smartphone to remotely lock and unlock your doors, start charging, heat or cool your cabin, and more.^{2, 6, 17, 18}



Ready for your journey

Nissan LEAF features a suite of available intuitive trip features at your fingertips. From the available Nissan Door to Door Navigation System to standard Android Auto™ with real-time traffic information using Waze,[™] your drives are as easy as they are thrilling. Add in available NissanConnect® EV with Services powered by SiriusXM, standard Bluetooth® hands-free connectivity, and three USB-A ports alongside a USB-C interface — and even your greatest adventures can stay connected.^{2, 6, 7, 8}

Get the most out of charging¹⁹

Using a charging timer, standard portable charge cable, and a dedicated 240-V outlet, you can easily recharge your Nissan LEAF's battery overnight when electricity rates may be lowest.²⁰



Need a home charger professionally installed? Nissan has teamed up with Wallbox to help make sure you're covered. Wallbox offers qualifying 2025 Nissan LEAF owners a special offer on the rugged Pulsar Plus® home charger, which can also be expertly installed by certified technicians at an additional cost for durable, reliable at-home power when you need it.^{20, 37}

At-home 240-V Charging²⁰

60 kWh Battery:
EPA-estimated Range up to 212 Miles on Nissan LEAF SV PLUS¹

Approx. 11 Hours = Full Charge¹⁹

40 kWh Battery:
EPA-estimated Range up to 149 Miles on Nissan LEAF S¹
Approx. 7 Hours & 45 Minutes = Full Charge¹⁹

EPA-estimated range up to 212 miles as shown on Nissan LEAF® SV PLUS.¹

Power up for your next thrill

An ever-expanding network of public EV charging stations means you've got a lot of options for your next charge. Just use the available menu on your Nissan LEAF's center touch-screen display — you can even filter for the type of charger you are looking for, type of payment method, and more.^{6, 21}

Public DC Quick Charging^{19, 21}

60 kWh Battery:
EPA-estimated Range up to 212 Miles on Nissan LEAF SV PLUS¹

Approx. 45 Minutes = 80% Charge¹⁹ (100 kW)

Approx. 60 Minutes = 80% Charge¹⁹ (50 kW)

40 kWh Battery:
EPA-estimated Range up to 149 Miles on Nissan LEAF S¹

Approx. 40 Minutes = 80% Charge¹⁹ (50 kW)



EPA-estimated range up to 212 miles as shown on Nissan LEAF® SV PLUS.¹



A cabin designed to thrill

With room for up to five and available perks like front seat warmers and a hybrid heater system, the Nissan LEAF® shows how remarkable driving electric can be. A “floating” touch-screen display puts your compatible device on center stage.^{2,6} And with the available Nissan Door to Door Navigation System, you can send trip destinations from your compatible smartphone to your Nissan LEAF and navigate to the front door or even get walking directions to parking spots.^{2,8}

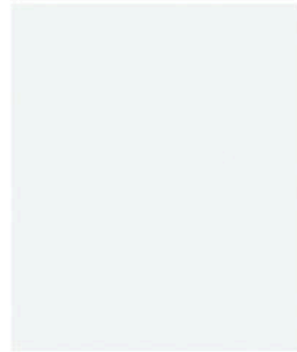
Customizable digital display

Intuitive drive selector

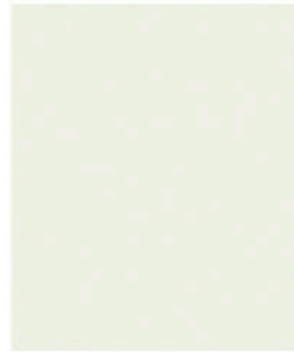
D-shaped steering wheel

Noise-insulated cabin

CHOOSE YOUR COLOR & INTERIOR



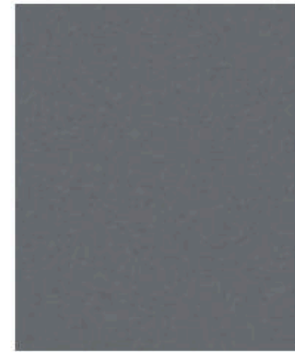
Glacier White



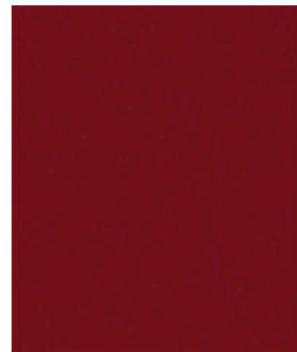
Pearl White TriCoat³



Brilliant Silver Metallic



Gun Metallic



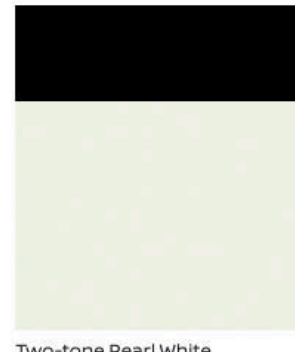
Scarlet Ember Tintcoat³



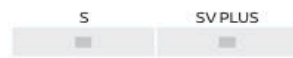
Deep Blue Pearl



Super Black

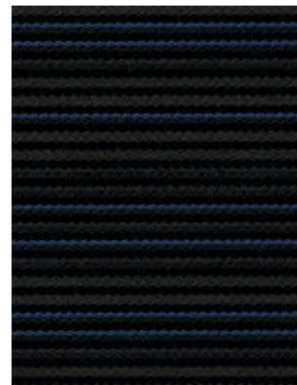


Two-tone Pearl White TriCoat/Super Black³



Standard

Nissan has taken care to ensure that the color swatches presented here are the closest possible representations of actual vehicle colors. Swatches may vary slightly due to the printing process and whether viewed in daylight, fluorescent or incandescent light. Please see the actual colors at your local Nissan dealer.



Black Cloth
S | SV PLUS

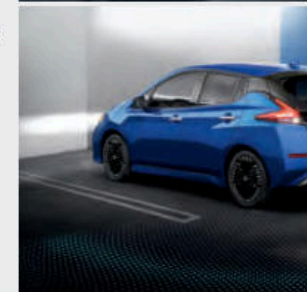


CHOOSE YOUR TRIM LEVEL

S

- 40 kWh lithium-ion battery
- 110 kW AC synchronous electric motor with 147 hp and 236 lb-ft of torque
- 6.6 kW onboard charger
- Portable charge cable (120-V/240-V)
- Quick Charge port — 50 kW (CHAdeMO)
- e-Pedal⁵
- Intelligent Forward Collision Warning¹⁶
- Automatic Emergency Braking with Pedestrian Detection¹¹
- Intelligent Lane Intervention¹⁵
- Intelligent Blind Spot Intervention¹⁴
- Rear Cross Traffic Alert¹³
- RearView Monitor²²
- Rear Automatic Braking¹²
- High Beam Assist

- 16" Steel wheels with covers
- Illuminated grille emblem
- 7" Information display (in gauge cluster)
- NissanConnect[®] 8" color display with multi-touch control⁶
- Apple CarPlay[®] integration⁶
- Android Auto[™] compatibility⁶
- Automatic Temperature Control
- Nissan Intelligent Key[®] with Push Button Start
- Rear Door Alert²³
- SiriusXM with 3-month subscription included⁶
- AM/FM audio system with four speakers
- Three USB-A ports and one USB-C port²



SV PLUS INCLUDES S EQUIPMENT PLUS:

- 60 kWh lithium-ion battery
- 160 kW AC synchronous electric motor with 214 hp and 250 lb-ft of torque
- High-output Quick Charge port — 100 kW (CHAdeMO)
- 17" Aluminum-alloy wheels
- Front bumper chin spoiler
- Electronic parking brake with automatic brake hold
- ProPILOT Assist⁴
- Intelligent Around View[®] Monitor²⁴
- Intelligent Driver Alertness²⁵
- LED headlights with LED signature Daytime Running Lights
- Fog lights
- Heated leather-wrapped steering wheel

- Nissan Door to Door Navigation with Premium Traffic⁸
- Auto-dimming rearview mirror
- 8-way power adjustable driver's bucket seat with 2-way adjustable lumbar
- Heated outside mirrors
- Hybrid heater system
- Heated front seats
- NissanConnect[®] EV with Services powered by SiriusXM with trial access to 5-year Select, 3-year EV, and 3-year Premium packages⁶
- SiriusXM Traffic and Travel Link with 3-month trial access⁶
- AM/FM audio system with six speakers



Images may show additional available equipment.

GENUINE NISSAN ACCESSORIES

Put your thumbprint on a tiny footprint

Every Genuine Nissan Accessory is custom-fit, custom-designed, and durability-tested. Each one is backed by Nissan's 3-year/36,000-mile (whichever occurs first) limited warranty (if installed by the dealer at the time of new vehicle purchase) and can be financed when installed by the dealer at time of new vehicle purchase.²⁶

For more information and to shop online for Nissan LEAF® Genuine Nissan Accessories, go to bit.ly/25Leaf-Accys



Nissan LEAF® SV PLUS shown in Pearl White TriCoat® with Chrome Rear Bumper Protector and Splash Guards (4-piece set).

CHOOSE YOUR ACCESSORIES

A. All-Season Floor Mats — High Wall Liners (4-piece set)

No sleet, snow, or mud shall mess up your ride.

B. Clear Front Bumper Charging Port Protector

Help keep your front bumper scratch-free from everyday charging.

C. Cargo Organizer

Customize your cargo space with movable dividers.

D. Carpeted Cargo Area Protector and Cargo Blocks/ Stabilizers (sold separately)²⁵

The plush way to protect and keep your cargo from sliding around.

E. Rear Cargo Area Cover

No one outside needs to know what's in there.

F. Kick Plates

For a grand entrance every time.

G. USB Charging Cable Set²

Keep your Lightning® and USB-C connectors for your Apple® and Android™ devices in one place.

H. Seatback Organizer

Free up some room on your cargo floor while also keeping what you need within reach.

Additional Accessories:

- Soft-Sided Cargo Cooler
- Cargo Net
- Door Cup Paint Protection
- Trash Bin
- Chrome Rear Bumper Protector
- Emergency Road Kit
- Wheel Locks
- Carpeted Floor Mats (4-piece set)
- Rear Cup Holders & Stash Tray
- And More



SPECIFICATIONS

Electric Motor	S	SV PLUS
110 kW AC synchronous electric motor Horsepower — 147 hp Torque — 236 lb-ft	■	
160 kW AC synchronous electric motor Horsepower — 214 hp Torque — 250 lb-ft		■
Emissions — Zero Emissions Vehicle (ZEV) ²⁷	■	■
40 kWh lithium-ion battery	■	
60 kWh lithium-ion battery		■
6.6 kW onboard charger	■	■
Portable charge cable (120-V/240-V)	■	■
Quick Charge port — 50 kW (CHAdeMO)	■	
High-output Quick Charge port — 100 kW (CHAdeMO)		■

Drivetrain	S	SV PLUS
Regenerative braking system	■	■
Eco Mode	■	■
B-mode	■	■

Brakes	S	SV PLUS
Front and rear vented disc brakes	■	■
Anti-lock Braking System (ABS)	■	■
Electronic Brake force Distribution (EBD)	■	■
Brake Assist ²⁸	■	■
Electronic parking brake with automatic brake hold		■

Suspension / Steering	S	SV PLUS
Independent strut front suspension	■	■
Torsion beam rear suspension	■	■
Front and rear stabilizer bars	■	■
Vehicle-speed-sensitive electric power steering	■	■

Driver Assistance Technologies	S	SV PLUS
e-Pedal ⁵	■	■
Cruise control	■	
ProPILOT Assist ⁴		■
Intelligent Forward Collision Warning ¹⁶	■	■
Automatic Emergency Braking with Pedestrian Detection ¹¹	■	■
Intelligent Lane Intervention ¹⁵	■	■
Intelligent Blind Spot Intervention ¹⁴	■	■
Rear Cross Traffic Alert ¹³	■	
RearView Monitor ²²	■	
Intelligent Around View [®] Monitor ²⁴		■
Rear Sonar System ²⁹	■	■
Rear Automatic Braking ¹²	■	■
High Beam Assist	■	■
Active Ride Control	■	■
Intelligent Trace Control ³⁰	■	■
Hill start assist	■	■
Intelligent Driver Alertness ²⁵		■
Vehicle Dynamic Control (VDC) ³¹ with Traction Control System (TCS)	■	■

Wheels / Tires	S	SV PLUS
16" Steel wheels with wheel covers	■	
17" Aluminum-alloy wheels		■
P205/55R16 Low rolling resistance all-season tires	■	
P215/50R17 Low rolling resistance all-season tires		■
Tire repair kit	■	■

Exterior Features	S	SV PLUS
Halogen headlights	■	
LED headlights with LED signature Daytime Running Lights		■
Intelligent Auto Headlights	■	■
Fog lights		■
Illuminated grille emblem	■	■
Aerodynamic underbody panels and rear diffuser	■	■
Front bumper chin spoiler		■
Aerodynamic rear spoiler	■	■
Aerodynamic side rear spoiler	■	■
Dual power outside mirrors	■	■
Heated outside mirrors		■
Charge port with light and lock	■	■
UV-reducing solar glass	■	■

Comfort / Convenience	S	SV PLUS
Automatic Temperature Control	■	■
Hybrid heater system		■
Nissan Intelligent Key [®] with Push Button Start	■	■
12-volt DC power outlet ³⁹	■	■
Power door locks with auto-locking feature	■	■
Power windows with driver's window one-touch auto-up/down	■	■
Tilt and telescoping steering column	■	■
Auto-dimming rearview mirror		■
Variable intermittent windshield wipers and intermittent rear window wiper	■	■
Rear Door Alert ²³	■	■
Front map lights	■	■
Sun visors with vanity mirrors and extensions	■	■
Two cup holders	■	■
Four bottle holders	■	■

Seating / Appointments	S	SV PLUS
6-way manual adjustable driver's bucket seat	■	
8-way power adjustable driver's bucket seat with 2-way adjustable lumbar		■
4-way manual adjustable front-passenger's bucket seat	■	■
Cloth seat trim	■	■
Heated front seats		■
60/40-split fold-down rear seats	■	■
Leather-wrapped steering wheel		■
Heated steering wheel		■

Infotainment	S	SV PLUS
7" Information display (in gauge cluster)	■	■
NissanConnect [®] 8" color display with multi-touch control ⁶	■	■
Nissan Door to Door Navigation System with Premium Traffic ⁸		■
NissanConnect [®] EV with Services powered by SiriusXM with trial access to 5-year Select, 3-year EV, and 3-year Premium packages ⁶		■
Voice Recognition ⁸	■	■
Apple CarPlay [®] integration ⁶	■	■
Android Auto [™] compatibility ⁶	■	■
SiriusXM Traffic and Travel Link with 3-month trial access ⁶		■
Bluetooth [®] Hands-free Phone System ⁶	■	■
Hands-free Text Messaging Assistant ⁷	■	■
AM/FM audio system with four speakers	■	
AM/FM audio system with six speakers		■
SiriusXM with 3-month subscription included ⁶	■	■
Streaming Audio via Bluetooth [®] ⁶	■	■
Three USB-A ports and one USB-C port ²	■	■
Steering wheel-mounted audio controls	■	■

Safety / Security	S	SV PLUS
Nissan Advanced Air Bag System with dual-stage supplemental front air bags with seat-belt and occupant-classification sensors ³²	■	■
Seat-mounted side-impact supplemental air bags for front- and rear-seat outboard occupants ³²	■	■
Driver and front-passenger supplemental knee air bags ³²	■	■
Roof-mounted curtain supplemental air bags with rollover sensor for side-impact head protection for front- and rear-seat outboard occupants ³²	■	■
3-point ALR/ELR passenger seat belt system (ELR for driver)	■	■
Front seat belts with pretensioners and load limiters	■	■
LATCH System (Lower Anchors and Tethers for CHildren)	■	■
Tire Pressure Monitoring System (TPMS) with Easy-Fill Tire Alert ^{33, 34}	■	■
Nissan Vehicle Immobilizer System	■	■
Vehicle Security System	■	■

DIMENSIONS/CAPACITIES/WEIGHTS/BATTERY/MPGe

Dimensions	
Exterior — Inches	
Wheelbase	106.3
Overall length/width/height	176.4/70.5/61.5 (S)
	176.4/70.5/61.7 (SV PLUS)
Track width (front/rear)	60.6/61.2 (S)
	60.2/60.8 (SV PLUS)

Aerodynamics — Cd	
Drag coefficient	0.28

Interior (front/rear) — Inches			
Head room	41.2/37.3	Hip room	51.7/50.0
Leg room	42.1/33.5	Shoulder room	54.3/52.5

Capacities	
Seating capacity	5
EPA interior passenger volume (cu. ft.)	92.4
Total interior volume (cu. ft.)	116.0
Cargo volume with rear seat up (cu. ft.) ³⁵	23.6
Cargo volume with rear seat down (cu. ft.) ³⁵	30.0

Curb Weights — Lbs.		
	S	SV PLUS
Base total	3,509	3,901

Battery Charging Times ¹⁹		
	S	SV PLUS
100% capacity (240-V / AC) ¹⁹	7.75 hrs	11 hrs
80% capacity (100 kW / DC) ¹⁹	N/A	Approx. 45 Min
80% capacity (50 kW / DC) ¹⁹	Approx. 40 Min	Approx. 60 Min

Range and Fuel Economy Estimates ¹		
	S	SV PLUS
Range (miles)	149	212
City/Hwy/Cmb MPGe ¹	123/99/111	121/98/109

NISSAN ROADSIDE ASSISTANCE

Your peace of mind is on us. For 36 months or 36,000 miles, whichever comes first, your new Nissan is covered for the following:³⁶

- Flat-tire changes
- Trip Interruption benefits
- Jump starts
- Vehicle lockouts
- Emergency fuel delivery

visit [NissanUSA.com/LEAF](https://www.nissanusa.com/LEAF)

PRINTED IN USA



Sign up to get the latest on
Nissan vehicles, news, and events.

<https://www.nissanusa.com/brochures/request-brochure.html>