

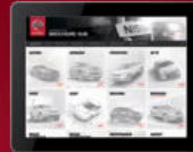


2017
MAXIMA®

Innovation
that excites

SWIPE FOR MORE INFO

Download the Interactive Brochure Hub app on your tablet and you'll have Maxima® and the whole Nissan lineup at your fingertips. Get the full product story enhanced with interactive demos and videos, plus complete info on trim levels, colors, accessories, and more.



Nissan Interactive Brochure Hub available free on the App Store® and Google Play®

Or go to NissanUSA.com to view on your desktop.



Your peace of mind is on us. For 36 months or 36,000 miles, whichever comes first, your new Nissan is covered for the following:¹

- Flat-tire changes
- Trip Interruption benefits
- Jump starts
- Vehicle lockouts
- Emergency fuel delivery



Innovation
that excites

Follow Nissan on:



visit NissanUSA.com/maxima

¹Roadside Assistance and Trip Interruption available during the first 3 years or 36,000 miles (whichever occurs first) after initial new vehicle delivery. Restrictions apply. See Owner's Manual for details. The App Store® logo is a registered trademark of Apple, Inc. All rights reserved. Facebook® is a registered trademark of Facebook, Inc. Google Play™ is a registered trademark of Google, Inc. Twitter™ is a registered trademark of Twitter, Inc. YouTube™ is a registered trademark of Google Inc.

PRINTED IN USA



TRANSFORM your drive from elevated to exhilarating at the touch of a button. Feel 300 horsepower push you deeply into a sculpted sport seat. Lean in to your favorite curve as sleek aerodynamics let you slice through the air. And after a pulse-raising ride, just as quickly return to swift, effortless motion. The 2017 Maxima,[®] the 4-Door Sports Car[®] designed to boost your excitement **INSTANTLY.**

See Maxima[®] in action at:
bit.ly/17Maximavideo



PURE AMBIENCE

Technically, the term is "Wow". There's no better way to describe it – the perfect execution of driving function with elegance and style. The quality of materials. The ideal placement of controls. The long list of luxuries you expect – and a few you hadn't even thought of. It's clear that a great deal of time was spent, so that every moment in the new Maxima® feels special. Wow, indeed.

Premium Ascot Leather-wrapped D-shaped steering wheel¹

Zero Gravity Front Seats

Climate-controlled front seats¹

Dual Panel Panoramic Moonroof¹

Remote Engine Start System² with Intelligent Climate Control

Heated steering wheel¹

Ambient LED lighting¹

Genuine stitching on dashboard, doors and console

Nissan Maxima® Platinum shown in Cashmere Leather.



CUSTOMIZED PERFORMANCE

With legendary VQ V6 power under your right foot, a next-generation CVT to keep you in the meat of the powerband, and a sport-tuned suspension to hunt down corners, Maxima® is a driver's dream come true. And with the standard Drive Mode Selector, you can switch between sport sedan and luxurious cruiser at the touch of a button.

Xtronic CVT® | 300 hp, 3.5-L VQ V6 Engine | Drive Mode Selector

MAXIMA SR: AN ENTHUSIAST'S WISH LIST

Take Maxima's already athletic abilities to new heights with Maxima SR. Start with an enthusiast's wish list, including 19" machine-finished aluminum-alloy wheels, and a unique sport-tuned suspension with advanced dynamic technologies. Add in a special interior with Premium Ascot Leather appointments, Alcantara® inserts on the seats and steering wheel, and "Liquid Chrome" faceted interior trim. The result - a driving experience that's exhilarating in every sense of the word.

Alcantara® is a registered trademark of Alcantara S.p.A. Corporation.



SEAMLESS CONNECTIVITY

Apple CarPlay™ is a smarter way to use your compatible iPhone® in the car. CarPlay™ takes many of the things you want to do with your compatible iPhone® while driving and puts them right on your car's built-in display. You can get directions, make calls, send and receive messages, and listen to music, all in a way that helps you to stay focused on the road.¹

¹Driving is serious business and requires your full attention. Only use feature when safe to do so. Compatible iPhone® required. Availability of specific feature is dependent upon the phone's Bluetooth® support. Please refer to your phone Owner's Manual for details. Bluetooth® word mark and logos are owned by Bluetooth SIG, Inc., and any use of such marks by Nissan is under license. See NissanUSA.com/bluetooth for details. Text rates and/or data usage may apply. Services/features are provided by independent companies not within Nissan's control. Should service provider terminate/restrict service/feature, service/feature may be suspended or terminated without notice or liability to Nissan and/or its agents. Nissan not responsible for any equipment replacement or upgrades, or associated costs, that may be required for continued operation due to service/feature changes. Apple's terms and privacy statements apply. Apple CarPlay™ is a trademark of Apple, Inc. iPhone® is a registered trademark of Apple, Inc. All rights reserved. iPhone® or other external device not included.

THE 4-DOOR SPORTS CAR®

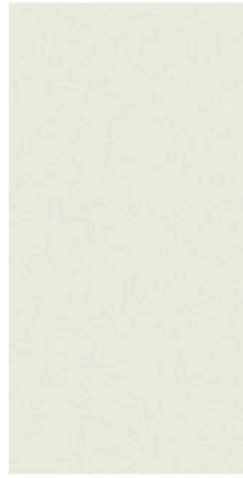
ADVANCED SAFETY

Wouldn't it be cool if your car had your back? Whether you're changing lanes on the highway or deftly maneuvering your way out of a parking spot, Maxima's available Intelligent Safety Shield Technologies offers you a suite of advanced systems that help you keep an eye out around you, watch the flow of traffic and even think ahead.

Predictive Forward Collision Warning ²	Forward Emergency Braking ³	Blind Spot Warning ⁴	Rear Cross Traffic Alert ⁵
---	--	---------------------------------	---------------------------------------

²PFCW is intended to warn you before a collision occurs; it cannot prevent a collision. Speed and other limitations apply. See Owner's Manual for details. ³FEB cannot prevent accidents due to carelessness or dangerous driving techniques. It may not provide warning or braking in certain conditions. Speed limitations apply. ⁴Blind Spot Warning is not a substitute for proper lane change procedures. The system will not prevent contact with other vehicles or accidents. It may not detect every vehicle or object around you. ⁵Not a substitute for proper backing procedures. May not detect all moving vehicles. Speed and other limitations apply. See Owner's Manual for details.

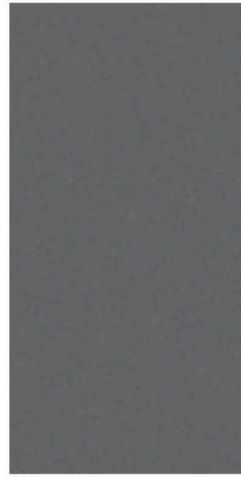
CHOOSE YOUR COLOR



Pearl White¹ QAB



Brilliant Silver K23



Gun Metallic KAD



Forged Bronze CAT

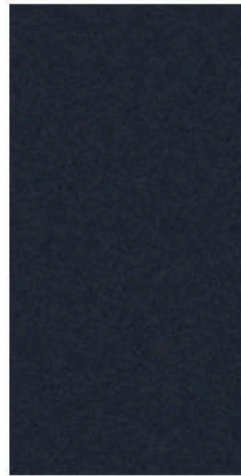


Coulis Red NAW

	S	SV	SL	SR	ME	PLT
CASHMERE CLOTH	<input checked="" type="checkbox"/>					
CASHMERE LEATHER		<input checked="" type="checkbox"/>	<input checked="" type="checkbox"/>			<input checked="" type="checkbox"/>
CAMEL LEATHER				<input checked="" type="checkbox"/>		
CHARCOAL CLOTH	<input checked="" type="checkbox"/>					
CHARCOAL LEATHER		<input checked="" type="checkbox"/>	<input checked="" type="checkbox"/>	<input checked="" type="checkbox"/>	<input checked="" type="checkbox"/>	<input checked="" type="checkbox"/>



Deep Blue Pearl RAY



Storm Blue RBD



Bordeaux Black GAB



Super Black KH3

Standard

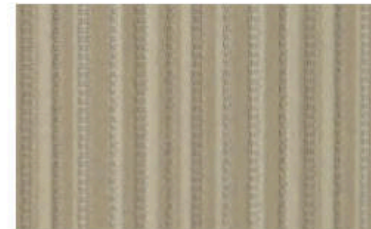
¹Extra cost option. Alcantara® is a registered trademark of Alcantara S.p.A. Corporation. Nissan has taken care to ensure that the color swatches presented here are the closest possible representations of actual vehicle colors. Swatches may vary slightly due to the printing process and whether viewed in daylight, fluorescent or incandescent light. Please see the actual colors at your local Nissan dealer.

	S	SV	SL	SR	ME	PLT
CASHMERE CLOTH	<input checked="" type="checkbox"/>					
CASHMERE LEATHER		<input checked="" type="checkbox"/>	<input checked="" type="checkbox"/>			<input checked="" type="checkbox"/>
CAMEL LEATHER				<input checked="" type="checkbox"/>		
CHARCOAL CLOTH	<input checked="" type="checkbox"/>					
CHARCOAL LEATHER		<input checked="" type="checkbox"/>	<input checked="" type="checkbox"/>	<input checked="" type="checkbox"/>	<input checked="" type="checkbox"/>	<input checked="" type="checkbox"/>

CHOOSE YOUR INTERIOR



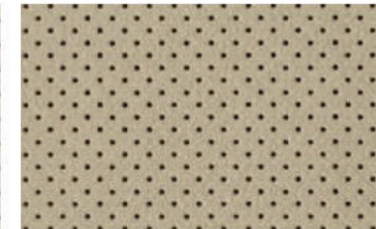
Nissan Maxima® Platinum shown in Cashmere Leather.



Cashmere Cloth
S



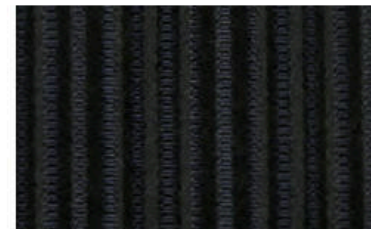
Cashmere Leather
SV | SL



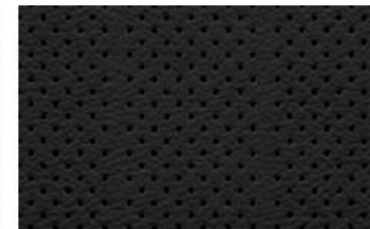
Cashmere Leather
PLATINUM



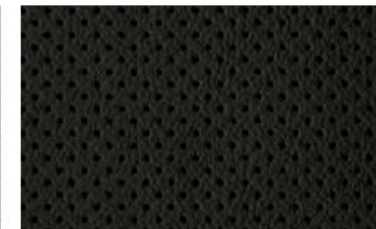
Camel Leather
with Alcantara® Inserts
SR



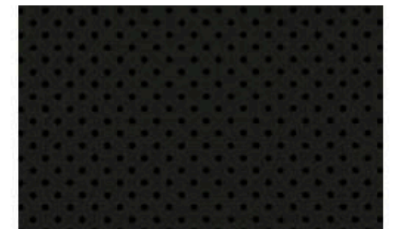
Charcoal Cloth
S



Charcoal Leather
SV | SL



Charcoal Leather
PLATINUM



Charcoal Leather
with Alcantara® Inserts
SR | SR MIDNIGHT EDITION

CHOOSE YOUR TRIM LEVEL

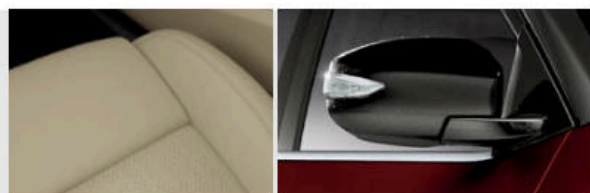
S

- 300 hp 3.5-liter V6 engine
- Xtronic CVT® (Continuously Variable Transmission)
- 18" Machine-finished aluminum-alloy wheels
- P245/45R18 V-rated all-season tires
- Drive Mode Selector with Sport or Normal modes
- LED Daytime Running Lights
- Taillights with integrated LED signature
- Advanced Drive-Assist® Display with 7.0" display
- NissanConnectSM with Navigation, featuring Apple CarPlay™1,2
- 8.0" multi-touch control color monitor
- Voice Recognition for audio and navigation
- Hands-free text messaging assistant³
- Display Commander
- RearView Monitor
- Bluetooth® Hands-Free Phone System⁴
- Dual Zone Automatic Temperature Control (ATC)
- HomeLink® Universal Transceiver
- Nissan Intelligent Key® with Push Button Ignition
- Remote Engine Start System with Intelligent Climate Control
- 8-way power driver's seat
- 4-way power front-passenger's seat
- 60/40 Split fold-down rear seatbacks with valet locking function
- Cloth seat trim with leather-wrapped steering wheel and shift knob
- "Razor Steel" faceted interior trim
- AM/FM/CD audio system
- SiriusXM® Satellite Radio⁵
- MP3/WMA CD playback capability
- Two illuminated USB connection ports
- Streaming audio via Bluetooth® wireless technology⁴
- Tire Pressure Monitoring System (TPMS) with Easy-Fill Tire Alert
- Vehicle Dynamic Control (VDC) with Traction Control System (TCS)
- Nissan Advanced Air Bag System



SV INCLUDES S EQUIPMENT PLUS:

- Leather-appointed seats
- Heated front seats
- Power heated outside mirrors with LED turn signal indicators
- Front and Rear Sonar System
- Driver's seat power lumbar support
- Driver's seat manual thigh support extension



SL INCLUDES SV EQUIPMENT PLUS:

- Dual Panel Power Panoramic Moonroof with one-touch open/close
- Intelligent Cruise Control (ICC)
- Adjustable ambient LED interior lighting
- Heated steering wheel
- Bose® Premium Audio System
- 11 Speakers, including Bose® Centerpoint® Surround Technology
- Active Noise Cancellation (ANC)
- Active Sound Enhancement (ASE)
- Blind Spot Warning (BSW)
- Rear Cross Traffic Alert (RCTA)
- Predictive Forward Collision Warning (PFCW)
- Forward Emergency Braking (FEB)



SR INCLUDES SL EQUIPMENT PLUS:

- 19" Machine-finished aluminum-alloy wheels
- P245/40R19 W-rated all-season tires
- Paddle shifters
- Integrated Dynamics-control Module (IDM) – Active Ride Control (ARC), Active Trace Control (ATC), Active Engine Brake (AEB)
- Sport-tuned suspension
- LED low-beam headlights
- Climate-controlled front seats (heated and cooled)
- Premium Ascot Leather-appointed seats with diamond-quilted Alcantara® inserts
- Premium Ascot Leather-wrapped steering wheel with Alcantara® insert
- "Liquid Chrome" faceted interior trim
- Aluminum sport pedals
- Deletes Dual Panel Power Panoramic Moonroof



SR MIDNIGHT EDITION INCLUDES SR EQUIPMENT PLUS:

- 19" Gloss black aluminum-alloy wheels
- Black sport spoiler
- Black rear diffuser



PLATINUM INCLUDES SL EQUIPMENT PLUS:

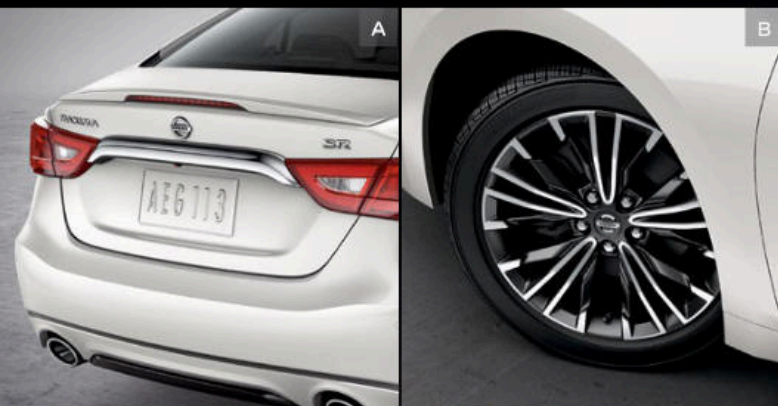
- LED low-beam headlights
- Outside mirrors with reverse tilt-down feature
- Auto-dimming driver-side outside mirror
- NissanConnectSM with Navigation and Services, featuring Apple CarPlay™2,6
- Driver Attention Alert (DAA)
- Around View® Monitor with Moving Object Detection (MOD)
- Power tilt/telescoping steering column
- Rain-sensing variable intermittent windshield wipers
- Rear-window power sunshade
- Memory System – driver's seat, steering wheel and outside mirrors
- Climate-controlled front seats (heated and cooled)
- Premium Ascot Leather-appointed seats with diamond-quilted leather inserts
- Premium Ascot Leather-wrapped steering wheel
- Mahogany wood-tone faceted interior trim



¹Driving is serious business. Only use features when safe to do so. App availability is dependent upon vehicle model, trim level, packaging, and/or options. See NissanUSA.com/connect for complete app availability details. Never program while driving. GPS mapping may not be detailed in all areas or reflect current road status. Compatible smartphone required. Cellular network and GPS signals not available in all areas and/or at all times. Technology is evolving, and changes by independent companies are not within Nissan's control. Nissan is not responsible for associated costs that may be required for continued operation due to cellular network termination (including equipment upgrades, if available, or roaming charges on alternative networks) or other third party changes. Should a third party provider terminate/restrict service, service may be terminated without notice and with no liability to Nissan and its agents or affiliates. Subscription Agreement required and terms and conditions of Subscription Agreement apply. See NissanUSA.com/connect for details. Text rates and/or data usage may apply. ²Driving is serious business and requires your full attention. Only use feature when safe to do so. Compatible iPhone® required. Availability of specific feature is dependent upon the phone's Bluetooth® support. Please refer to your phone Owner's Manual for details. Bluetooth® word mark and logos are owned by Bluetooth SIG, Inc., and any use of such marks by Nissan is under license. See NissanUSA.com/bluetooth for details. Text rates and/or data usage may apply. Services/features are provided by independent companies not within Nissan's control. Should service provider terminate/restrict service/feature, service/feature may be suspended or terminated without notice or liability to Nissan and/or its agents. Nissan not responsible for any equipment replacement or upgrades, or associated costs, that may be required for continued operation due to service/feature changes. Apple's terms and privacy statements apply. Apple CarPlay™ is a trademark of Apple, Inc. ³Use the text messaging feature after stopping your vehicle in a safe location. If you have to use the feature while driving, exercise extreme caution at all times so full attention may be given to vehicle operation. Compatible smartphone required. Text rates and/or data usage may apply. ⁴Availability of specific features is

dependent upon the phone's Bluetooth® support. Please refer to your phone Owner's Manual for details. Bluetooth® word mark and logos are owned by Bluetooth SIG, Inc., and any use of such marks by Nissan is under license. See NissanUSA.com/bluetooth for details. ⁵Required monthly subscriptions sold separately for each available SiriusXM feature after trial period, and are continuous until you call SiriusXM to cancel. Installation costs, one-time activation fee, other fees and taxes will apply. Each SiriusXM feature availability is dependent upon vehicle model, trim level, packaging, and/or options, and may only be available in select markets. Satellite Radio U.S. service, NavWeather® service, and SiriusXM Travel Link® services (if any of the foregoing features are equipped on vehicle) available only to those 18 or older in the 48 contiguous states and D.C. Fees and programming subject to change. Subscriptions governed by Customer Agreement available at siriusxm.com. ©2016 Sirius XM Radio Inc. Sirius® XM® and all related marks and logos are trademarks of Sirius XM Radio Inc. ⁶Driving is serious business. Only use NissanConnectSM Services powered by SiriusXM® when safe to do so. Late availability for some features. Services, including automatic crash notification and SOS, are dependent upon the telematics device being in operative condition, its ability to connect to a wireless network, compatible wireless network availability, navigation map data, and GPS satellite signal receptions, the absence of which can limit or prevent the ability to reach NissanConnect Services Customer Care or receive support. Never program while driving. GPS mapping may not be detailed in all areas or reflect current road status. You are responsible for using Remote Engine Start and Remote Horn features in accordance with any laws, rules or ordinances in effect in your vehicle's location. Remote Engine Start/Stop not available on all models. Cellular network not available in all areas and/or at all times. Cellular technology is evolving and changes to cellular networks provided by independent companies are not within Nissan's or Sirius XM Radio Inc.'s control. Neither Nissan nor Sirius XM are responsible for associated costs that may be required for continued operation due to cellular network termination (including equipment upgrades, if available, or roaming charges on alternative networks). Should cellular provider terminate/restrict services, service may be terminated without notice and with no liability to Nissan, Sirius XM and/or their respective agents or affiliates. Certain services require a PIN for activation. See NissanUSA.com/connect for details. Enrollment and Subscription Agreement required to receive full suite of services. Terms and conditions of Subscription Agreement apply. Six (6) month trial period begins on your date of vehicle purchase or lease of a new Nissan; subsequently a paid subscription is required at the then current rate to continue to receive services. Text rates and/or data usage may apply. Alcantara® is a registered trademark of Alcantara S.p.A. Corporation. Bose® and Centerpoint® are registered trademarks of The Bose Corporation. HomeLink® is a registered trademark of Gentex Corporation.

CHOOSE YOUR ACCESSORIES



Every Genuine Nissan Accessory is custom-fit, custom-designed and durability-tested. Each one is also backed by Nissan's 3-year/36,000-mile (whichever occurs first) limited warranty (if installed by dealer at the time of purchase).¹ Plus, they can be financed when installed by the dealer at the time of purchase.

A. Premium Spoiler

A fitting end to a breathtaking design.

B. 18" Aluminum-alloy Wheels

Aggressively styled, exclusively for Maxima.

C. Interior Trim Appliqués

Add some extra sport and sophistication with your choice of Carbon-fiber Look (shown) or Piano Black.

D. Illuminated Kick Plates and Interior Accent Lighting

For a grand entrance every time. (Sold separately)

E. All-season Floor Mats, Sport Carpeted Floor Mats, and Carpeted Floor Mats

Skip the mud, and other messes. (Sold separately)

F. Shift Knobs

Pick your hands-down favorite.

G. Nissan 4G WiFi & Apps²

Get on the road and online.

H. Trunk Protector

Helps preserve and protect your cargo.

Additional Accessories:

- Hideaway Trunk Net³
- Shopping Bag Hooks
- Trunk Organizer³
- And More
- Carpeted Trunk Mat

¹Covered by Nissan's Limited Warranty on Genuine Nissan Replacement Parts, Genuine NISMO® S-Tune Parts, and Genuine Nissan Accessories for the longer of 12 months/12,000 miles (whichever occurs first) or the remaining period under the 3-year/36,000-mile (whichever occurs first) Nissan New Vehicle Limited Warranty. Terms and conditions apply. See Warranty Information Booklet for details.
²Driving is serious business and requires your full attention. Only use Nissan WiFi and Apps Services powered by Autonet Mobile when safe to do so. Only available on select models. See Nissanwifi.com for complete availability details. Never program while driving. GPS mapping may not be detailed in all areas or reflect current road status. Nissan WiFi and Apps Services requires compatible cellular network provided by Autonet, navigation map data, and GPS satellite signal reception, the absence of which can limit or prevent the ability of the Nissan WiFi and Apps Services. Cellular network and GPS signals not available in all areas and/or at all times. Technology is evolving, and changes to cellular networks provided by independent companies or other third party changes that impact Nissan WiFi and Apps Services are not within Nissan's control. Should a third party or Autonet Mobile terminate or make changes that impact the service, service may be terminated without notice and Nissan shall have no liability. The Apps Services requires compatible smartphone or personal computer, not included with vehicle. Enrollment and Subscription Agreement is required to receive full suite of Nissan WiFi and Apps Services through Autonet Mobile. The 90-day trial period for Apps Services begins when the unit is registered with Autonet Mobile, subsequently the respective paid subscription for WiFi is at the then current rate to continue to receive respective services. Terms and conditions of Subscription Agreement then apply. Text rates and/or data usage may apply. ³Cargo and load capacity limited by weight and distribution. Always secure all cargo.

GENUINE NISSAN ACCESSORIES

TURN BRAND-NEW INTO ALL YOU

For more information and to shop online for Maxima® Genuine Nissan Accessories, go to bit.ly/17maxima-estore



Nissan Maxima® SR shown in Pearl White with Sport Spoiler, Splash Guards, Rocker Panel Moldings, Rear Diffuser, 19" Aluminum-alloy Wheels, and External Ground Lighting.

SPECIFICATIONS

Engine	S	SV	SL	SR	ME	PLT
VQ35DE – 3.5-liter DOHC 24-valve V6 engine	■	■	■	■	■	■
—Horsepower – 300 hp @ 6,400 rpm						
—Torque – 261 lb-ft @ 4,400 rpm						
Continuously Variable Valve Timing Control System (CVTCS) on intake and exhaust valves	■	■	■	■	■	■
Nissan Direct Ignition System	■	■	■	■	■	■
Electronic drive-by-wire throttle	■	■	■	■	■	■

Drivetrain	S	SV	SL	SR	ME	PLT
Front engine/Front-wheel Drive	■	■	■	■	■	■
Xtronic CVT® (Continuously Variable Transmission) with Drive Mode Selector and manual mode	■	■	■	■	■	■
Paddle shifters				■	■	
Integrated Dynamics-control Module (IDM) – Active Ride Control (ARC), Active Trace Control (ATC), Active Engine Brake (AEB)				■	■	

Brakes	S	SV	SL	SR	ME	PLT
12.60" x 1.10" front and 12.13" x 0.63" rear vented discs	■	■	■	■	■	■
4-wheel Anti-lock Braking System (ABS)	■	■	■	■	■	■
Electronic Brake force Distribution (EBD)	■	■	■	■	■	■
Brake Assist	■	■	■	■	■	■

Suspension/Chassis Bracing/Steering	S	SV	SL	SR	ME	PLT
Independent strut front suspension	■	■	■	■	■	■
Independent multi-link rear suspension	■	■	■	■	■	■
Hollow-tube front and rear stabilizer bar	■	■	■	■	■	■
Sport-tuned suspension – retuned dampers, stiffer springs and larger front stabilizer bar				■	■	
Front strut tower and rear chassis reinforcement	■	■	■	■	■	■
Hydro-electric power steering (HEPS)	■	■	■	■	■	■

Wheels/Tires	S	SV	SL	SR	ME	PLT
18" x 8.0" machine-finished aluminum-alloy wheels	■	■	■			■
19" x 8.0" machine-finished aluminum-alloy wheels				■		
19" x 8.0" gloss black aluminum-alloy wheels					■	
P245/45R18 V-rated all-season tires	■	■	■			■
P245/40R19 W-rated all-season tires				■	■	

Exterior Features	S	SV	SL	SR	ME	PLT
LED Daytime Running Lights	■	■	■	■	■	■
Halogen headlights	■	■	■			
LED low-beam headlights				■	■	■
Smart Auto Headlights	■	■	■	■	■	■
Fog lights	■	■	■	■	■	■
Taillights with integrated LED signature	■	■	■	■	■	■
Dual mufflers with rolled chrome-tipped finishers	■	■	■	■	■	■
Black sport spoiler					■	
Black rear diffuser					■	
Dual power outside mirrors	■					

■ Standard

Exterior Features (continued)	S	SV	SL	SR	ME	PLT
Power heated outside mirrors with LED turn signal indicators		■	■	■	■	■
Outside mirrors with reverse tilt-down feature						■
Auto-dimming driver-side outside mirror						■
Dual Panel Power Panoramic Moonroof			■			■
Front and Rear Sonar System		■	■	■	■	■

Comfort/Convenience	S	SV	SL	SR	ME	PLT
Advanced Drive-Assist® Display	■	■	■	■	■	■
NissanConnect SM with Navigation, featuring Apple CarPlay ^{TM1,2}	■	■	■	■	■	
NissanConnect SM with Navigation and Services, featuring Apple CarPlay ^{TM1,2}						■
8.0" multi-touch control color monitor	■	■	■	■	■	■
Voice Recognition for audio and navigation	■	■	■	■	■	■
SiriusXM® Traffic and Travel Link® ³	■	■	■	■	■	■
Hands-free text messaging assistant ⁴	■	■	■	■	■	■
Display Commander	■	■	■	■	■	■
RearView Monitor	■	■	■	■	■	■
Around View® Monitor						■
Bluetooth® Hands-free Phone System ⁵	■	■	■	■	■	■
Dual Zone Automatic Temperature Control (ATC) with in-cabin microfilter and rear vents	■	■	■	■	■	■
HomeLink® Universal Transceiver	■	■	■	■	■	■
Illuminated steering wheel-mounted controls	■	■				
Cruise control				■	■	■
Intelligent Cruise Control (ICC)				■	■	■
Driver Attention Alert (DAA)						■
Auto-dimming inside rearview mirror	■	■	■	■	■	■
Nissan Intelligent Key® with Push Button Ignition	■	■	■	■	■	■
Remote Engine Start System with Intelligent Climate Control	■	■	■	■	■	■
Remote front windows down and trunk release via Nissan Intelligent Key®	■	■	■	■	■	■
Power-tilt/telescoping steering column						■
Rain-sensing variable intermittent windshield wipers						■
Adjustable ambient LED interior lighting			■	■	■	■
Rear-window power sunshade						■

Seating/Appointments	S	SV	SL	SR	ME	PLT
8-way power driver's seat	■	■	■	■	■	■
4-way power front-passenger's seat	■	■	■	■	■	■
Memory System – driver's seat, steering wheel and outside mirrors						■
Driver's seat power lumbar support		■	■	■	■	■
Driver's seat manual thigh support extension						■
Heated front seats		■	■	■	■	■
Climate-controlled front seats (heated and cooled)				■	■	■
Heated steering wheel			■	■	■	■
60/40 Split fold-down rear seatbacks with valet locking function	■	■	■	■	■	■
Leather-appointed seats		■	■			
Premium Ascot Leather-appointed seats with diamond-quilted Alcantara® inserts				■	■	

Seating/Appointments (continued)	S	SV	SL	SR	ME	PLT
Premium Ascot Leather-appointed seats with diamond-quilted leather inserts						■
Leather-wrapped steering wheel	■	■	■			
Premium Ascot Leather-wrapped steering wheel with Alcantara® insert				■	■	
Premium Ascot Leather-wrapped steering wheel						■
Leather-wrapped shift knob	■	■	■	■	■	■
"Razor Steel" faceted trim	■	■	■			
"Liquid Chrome" faceted trim						
Mahogany wood-tone faceted trim						■
Aluminum sport pedals				■	■	

Audio/Entertainment	S	SV	SL	SR	ME	PLT
AM/FM/CD audio system	■	■				
Bose® Premium Audio System			■	■	■	■
Eight speakers	■	■				
11 Speakers, including Bose® Centerpoint® Surround Technology			■	■	■	■
Active Noise Cancellation (ANC)			■	■	■	■
Active Sound Enhancement (ASE)			■	■	■	■
Two illuminated USB connection ports	■	■	■	■	■	■
SiriusXM® Satellite Radio ³ and HD radio	■	■	■	■	■	■
Streaming audio via Bluetooth® wireless technology ²	■	■	■	■	■	■

Safety/Security	S	SV	SL	SR	ME	PLT
Nissan Advanced Air Bag System with supplemental front air bags with seat belt and occupant-classification sensors	■	■	■	■	■	■
Driver and front-passenger seat-mounted side-impact supplemental air bags	■	■	■	■	■	■
Roof-mounted curtain supplemental air bags with rollover sensor for side-impact and roll-over head protection for front and rear-seat outboard occupants	■	■	■	■	■	■
Vehicle Dynamic Control (VDC) with Traction Control System (TCS)	■	■	■	■	■	■
Blind Spot Warning (BSW)				■	■	■
Rear Cross Traffic Alert (RCTA)				■	■	■
Moving Object Detection (MOD)						■
Predictive Forward Collision Warning (PFCW)						■
Forward Emergency Braking (FEB)						■
LATCH System (Lower Anchors and Tethers for Children)	■	■	■	■	■	■
Tire Pressure Monitoring System (TPMS) with Easy-Fill Tire Alert	■	■	■	■	■	■

DIMENSIONS/CAPACITIES

Exterior Dimensions – Inches (continued)	
Wheelbase	109.3
Overall length/width/height	192.8/73.2/56.5
Interior Dimensions – Inches	
Head room (front/rear)	39.4/36.7
Head room with Dual Panel Moonroof (front/rear)	38.9/35.8
Leg room (front/rear)	45.0/34.2

DIMENSIONS/CAPACITIES (CONTINUED)

Interior Dimensions – Inches (continued)	
Hip room (front/rear)	54.2/53.5
Shoulder (room front/rear)	56.7/55.7

Capacities	
Seating capacity	5
EPA interior passenger volume without moonroof (cu. ft.)	98.6
EPA interior passenger volume with moonroof (cu. ft.)	96.9
EPA cargo volume (cu. ft.)	14.3
Fuel tank (gals.)	18.0

2017 EPA Fuel Economy Estimates						
City/Highway/Combined MPG	S	SV	SL	SR	ME	PLT
	21/30/25	21/30/25	21/30/25	21/30/25	21/30/25	21/30/25
— Actual mileage may vary with driving conditions – use for comparison only.						

¹Driving is serious business. Only use NissanConnectSM Services powered by SiriusXM[®] when safe to do so. Late availability for some features. Services, including automatic crash notification and SOS, are dependent upon the telematics device being in operative condition, its ability to connect to a wireless network, compatible wireless network availability, navigation map data, and GPS satellite signal receptions, the absence of which can limit or prevent the ability to reach NissanConnect Services Customer Care or receive support. Never program while driving. GPS mapping may not be detailed in all areas or reflect current road status. You are responsible for using Remote Engine Start and Remote Horn features in accordance with any laws, rules or ordinances in effect in your vehicle's location. Remote Engine Start/Stop not available on all models. Cellular network not available in all areas and/or at all times. Cellular technology is evolving and changes to cellular networks provided by independent companies are not within Nissan's or Sirius XM Radio Inc.'s control. Neither Nissan nor Sirius XM are responsible for associated costs that may be required for continued operation due to cellular network termination (including equipment upgrades, if available, or roaming charges on alternative networks). Should cellular provider terminate/restrict services, service may be terminated without notice and with no liability to Nissan, Sirius XM and/or their respective agents or affiliates. Certain services require a PIN for activation. See NissanUSA.com/connect for details. Enrollment and Subscription Agreement required to receive full suite of services. Terms and conditions of Subscription Agreement apply. Six (6) month trial period begins on your date of vehicle purchase or lease of a new Nissan; subsequently a paid subscription is required at the then current rate to continue to receive services. Text rates and/or data usage may apply. ²Driving is serious business and requires your full attention. Only use feature when safe to do so. Compatible iPhone® required. Availability of specific feature is dependent upon the phone's Bluetooth® support. Please refer to your phone Owner's Manual for details. Bluetooth® word mark and logos are owned by Bluetooth SIG, Inc. and any use of such marks by Nissan is under license. See NissanUSA.com/bluetooth for details. Text rates and/or data usage may apply. Services/features are provided by independent companies not within Nissan's control. Should service provider terminate/restrict service/feature, service/feature may be suspended or terminated without notice or liability to Nissan and/or its agents. Nissan not responsible for any equipment replacement or upgrades, or associated costs, that may be required for continued operation due to service/feature changes. Apple's terms and privacy statements apply. Apple CarPlay™ is a trademark of Apple, Inc. ³Required monthly subscriptions sold separately for each available SiriusXM feature after trial period, and are continuous until you call SiriusXM to cancel. Installation costs, one-time activation fee, other fees and taxes will apply. Each SiriusXM feature availability is dependent upon vehicle model, trim level, packaging, and/or options, and may only be available in select markets. Satellite Radio U.S. service, NavWeather® service, and SiriusXM Travel Link® services (if any of the foregoing features are equipped on vehicle) available only to those 18 or older in the 48 contiguous states and D.C. Fees and programming subject to change. Subscriptions governed by Customer Agreement available at siriusxm.com. ©2016 Sirius XM Radio Inc. Sirius®, XM® and all related marks and logos are trademarks of Sirius XM Radio Inc. ⁴Use the text messaging feature after stopping your vehicle in a safe location. If you have to use the feature while driving, exercise extreme caution at all times so full attention may be given to vehicle operation. Compatible smartphone required. Text rates and/or data usage may apply. ⁵Availability of specific features is dependent upon the phone's Bluetooth® support. Please refer to your phone Owner's Manual for details. Bluetooth® word mark and logos are owned by Bluetooth SIG, Inc. and any use of such marks by Nissan is under license. See NissanUSA.com/bluetooth for details. HomeLink® is a registered trademark of Gentex Corporation. Alcantara® is a registered trademark of Alcantara S.p.A. Corporation. Bose® and Centerpoint® are registered trademarks of The Bose Corporation. iPod® is a registered trademark of Apple, Inc. All rights reserved. iPod® or other external device not included. This brochure is intended for general descriptive and informational purposes only. It is subject to change and does not constitute an offer, representation or warranty (express or implied) by Nissan North America, Inc. Interested parties should confirm the accuracy of any information in this brochure as it relates to a vehicle directly with Nissan North America, Inc. before relying on it to make a purchase decision. Nissan North America, Inc. reserves the right to make changes, at any time, without prior notice, in prices, colors, materials, equipment, specifications, and models and to discontinue models or equipment. Due to continuous product development and other pre- and post-production factors, actual vehicle, materials and specifications may vary from this brochure. Some vehicles shown with optional equipment. See the actual vehicle for complete accuracy. Availability and delivery times for particular models or equipment may vary. Specifications, options and accessories may differ in Hawaii, U.S. territories and other countries. For additional information on availability, options or accessories, see your Nissan dealer or contact Nissan North America, Inc. At NissanUSA.com, you'll find virtual product demonstrations, a way to "build your own Nissan," a dealer locator, and more information about key Nissan support services. Or if you'd prefer, call 1-800-NISSAN-3 for answers to specific questions about Maxima® or any other Nissan vehicle. The Nissan names, logos, product names, feature names, and slogans are trademarks owned by or licensed to Nissan Motor Co. Ltd. and/or its North American subsidiaries. Other trademarks and trade names are those of their respective owners. **Always wear your seat belt, and please don't drink and drive.** ©2016 Nissan North America, Inc. ¹⁷ Maxima. 1718266-N-6/16-60M-CGI