

NISSAN INTELLIGENT MOBILITY™

Nissan Intelligent Mobility guides everything we do. We're using new technologies to transform cars from mere driving machines into assistants. Together the journey is more confident, connected, and exciting. Whether it's cars that assist in the driving task, or highways that charge your EV as you go along, it's all in the very near future. And it's a future already taking shape in the Nissan you drive today.

SEE MAXIMA® COME TO LIFE

Go to NissanUSA.com and find an interactive brochure for Maxima® and every Nissan in the lineup. Available on desktop or smartphone, it's the full product story – including demos, videos, and complete info on trims, colors, and accessories.

Or download the Interactive Brochure Hub app on your tablet. Free on the App Store® and Google Play.™



Innovation
that excites

2018
MAXIMA®



¹Available feature. ²State and local laws, regulations or ordinances may apply based on the location of the vehicle. ³Available services/features may be shown. Compatible connected device may be required. Only use services/features and device when safe and legal to do so. Subject to GPS and wireless network availability and connection, and system/technology limitations. Text rates/data usage/subscription may apply. Some services/features provided by companies not within Nissan or its partners' control and may be discontinued at any time. For more information, see dealer, Owner's Manual, or NissanUSA.com/connect/important-information. ⁴FCW is intended to warn you before a collision occurs; it cannot prevent a collision. Speed and other limitations apply. See Owner's Manual for details. ⁵AEB cannot prevent accidents due to carelessness or dangerous driving techniques. It may not provide warning or braking in certain conditions. Speed and other limitations apply. See Owner's Manual for details. ⁶Blind Spot Warning is not a substitute for proper lane change procedures. The system will not prevent contact with other vehicles or accidents. It may not detect every vehicle or object around you. ⁷Intelligent Around View® Monitor cannot completely eliminate blind spots and may not detect every object. Operates at vehicle speeds below 5 mph. Always check surroundings and turn to look behind you before moving vehicle. ⁸Extra cost option. ⁹Driving is serious business and requires your full attention. If you have to use the feature while driving, exercise extreme caution at all times so full attention may be given to vehicle operation. ¹⁰Information displayed is dependent on how vehicle is equipped. ¹¹Never program while driving. GPS mapping may not be detailed in all areas or reflect current road status. ¹²Use the Text Messaging feature after stopping your vehicle in a safe location. If you have to use the feature while driving, exercise extreme caution at all times so full attention may be given to vehicle operation. Compatible smartphone required. Text rates and/or data usage may apply. ¹³Driving is serious business and requires your full attention. If you have to use the connected device while driving, exercise extreme caution at all times so full attention may be given to vehicle operation. External device not included. ¹⁴TPMS is not a substitute for regular tire pressure checks. ¹⁵Vehicle must be on for the Easy-Fill Tire Alert to operate. ¹⁶VDC, which should remain on when driving except when freeing the vehicle from mud or snow, cannot prevent accidents due to abrupt steering, carelessness, or dangerous driving techniques. ¹⁷Air bags are only a supplemental restraint system; always wear your seat belt. Even with the occupant-classification sensor, rear-facing child restraints should not be placed in the front-passenger's seat. All children 12 and under should ride in the rear seat properly secured in child restraints, booster seats, or seat belts according to their size. Air bags will only inflate in certain accidents; see your Owner's Manual for more details. ¹⁸The Sonar System is a convenience, not a substitute for proper parking and/or backing procedures. Always check that it is safe to do so before moving vehicle. May not detect every object. ¹⁹ICC is not a collision avoidance system or warning device. Designed to use limited braking. Failure to apply the brakes could result in an accident. ²⁰Not a substitute for proper backing procedures. May not detect all moving vehicles. Speed and other limitations apply. See Owner's Manual for details. ²¹ITC cannot prevent accidents or loss of control. It is the driver's responsibility to be in control of the vehicle at all times. ²²It is the driver's responsibility to remain alert at all times. Intelligent Driver Alertness is only a warning to inform the driver of a potential lack of driver attention or drowsiness. It does not detect and provide an alert in every situation. See Owner's Manual for details. ²³Covered by Nissan's Limited Warranty on Genuine Nissan Replacement Parts, Genuine NISMO® S-Tune Parts, and Genuine Nissan Accessories for the longer of 12 months/12,000 miles (whichever occurs first) or the remaining period under the 3-year/36,000-mile (whichever occurs first) Nissan New Vehicle Limited Warranty. Terms and conditions apply. See Warranty Information Booklet for details. ²⁴Cargo and load capacity limited by weight and distribution. Always secure all cargo. ²⁵Brake Assist is only an aid to assist the driver and is not a collision warning or avoidance device. It is the driver's responsibility to be in control of the vehicle at all times. ²⁶Parking aid/convenience feature. Cannot completely eliminate blind spots. May not detect every object and does not warn of moving objects. Always check surroundings and turn to look behind you before moving vehicle. Alcantara® is a registered trademark of Alcantara S.p.A. Corporation. Android Auto™ is a trademark of Google, Inc. The App Store® logo is a registered trademark of Apple, Inc. All rights reserved. Bluetooth® word mark and logos are owned by Bluetooth SIG, Inc. and any use of such marks by Nissan is under license. Bose® and Centerpoint® are registered trademarks of The Bose Corporation. CarPlay™ is a trademark of Apple, Inc. Facebook® is a registered trademark of Facebook, Inc. Google Play™ is a trademark of Google, Inc. HomeLink® is a registered trademark of Centex Corporation. iPhone® is a registered trademark of Apple, Inc. All rights reserved. Pandora® is a registered trademark of Pandora Media. The Sirius®, XM®, and SiriusXM® names and all related marks and logos are trademarks of Sirius XM Radio Inc. Twitter® is a registered trademark of Twitter, Inc. YouTube® is a registered trademark of Google Inc. This brochure is intended for general descriptive and informational purposes only. It is subject to change and does not constitute an offer, representation or warranty (express or implied) by Nissan North America, Inc. Interested parties should confirm the accuracy of any information in this brochure as it relates to a vehicle directly with Nissan North America, Inc. before relying on it to make a purchase decision. Nissan North America, Inc. reserves the right to make changes, at any time, without prior notice, in prices, colors, materials, equipment, specifications, and models and to discontinue models or equipment. Due to continuous product development and other pre- and post-production factors, actual vehicle, materials and specifications may vary from this brochure. Some vehicles shown with optional equipment. See the actual vehicle for complete accuracy. Availability and delivery times for particular models or equipment may vary. Specifications, options and accessories may differ in Hawaii, U.S. territories and other countries. For additional information on availability, options or accessories, see your Nissan dealer or contact Nissan North America, Inc. At NissanUSA.com, you'll find virtual product demonstrations, a way to "build your own Nissan," a dealer locator, and more information about key Nissan support services. Or if you'd prefer, call 1-800-NISSAN-3 for answers to specific questions about Maxima® or any other Nissan vehicle. The Nissan names, logos, product names, feature names, and slogans are trademarks owned by or licensed to Nissan Motor Co., Ltd. and/or its North American subsidiaries. Other trademarks and trade names are those of their respective owners. Always wear your seat belt, and please drive responsibly. ©2017 Nissan North America, Inc. '18 Maxima 1720678-N-10/17-60M-CGI



TAKE ON EXHILARATION. Transform your drive from elevated to inspiring at the touch of a button. Feel 300 horsepower push you deeply into a sculpted sport seat. Lean in to your favorite curve as sleek aerodynamics let you slice through the air. The 2018 Maxima,[®] the 4-Door Sports Car[®] designed to boost your excitement instantly. **TAKE ON TODAY.**

See Maxima[®] in action at:
bit.ly/18Maximavideo



PURE AMBIENCE

Technically, the term is "Wow". There's no better way to describe it – the perfect execution of driving function with elegance and style. The quality of materials. The ideal placement of controls. The long list of luxuries you expect – and a few you hadn't even thought of. It's clear that a great deal of time was spent, so that every moment in the new Maxima® feels special.

Premium Ascot Leather-wrapped D-shaped steering wheel¹

Zero Gravity Front Seats

Climate-controlled front seats¹

Dual Panel Panoramic Moonroof¹

Remote Engine Start System² with Intelligent Climate Control

Heated steering wheel¹

Ambient LED lighting¹

Genuine stitching on dashboard, doors and console

Nissan Maxima® Platinum shown in Cashmere Leather.



MAXIMA® SR: AN ENTHUSIAST'S WISH LIST

Start with 19" machine-finished aluminum-alloy wheels, and a unique sport-tuned suspension with advanced dynamic technologies. Add in a special interior with Premium Ascot Leather appointments, Alcantara® inserts on the seats and steering wheel, and "Liquid Chrome" faceted interior trim. The result - a driving experience that's exhilarating in every sense of the word.



NISSAN INTELLIGENT MOBILITY™

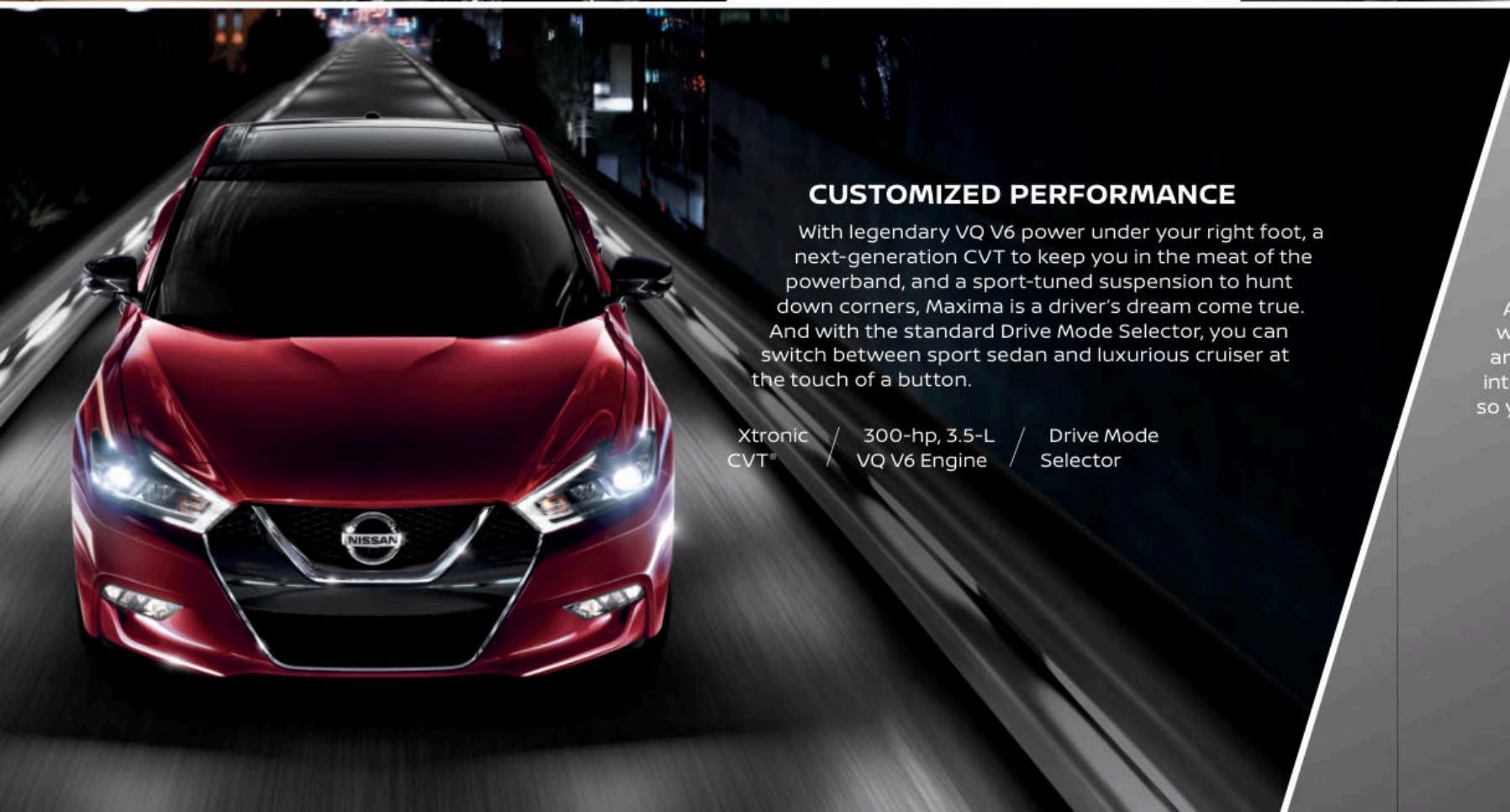
A BOLDER RIDE THROUGH LIFE Nissan Intelligent Mobility connects you to your drive like never before. You'll make every move with greater awareness and get a little help when you need it most. In some cases, it even reinvents things - like the way you park. All of this gives you more confidence and, ultimately, the freedom to embrace the joy of being behind the wheel. This is how driving was always supposed to be.

Intelligent Forward Collision Warning⁴

Automatic Emergency Braking⁵

Blind Spot Warning⁶

Intelligent Around View Monitor⁷



CUSTOMIZED PERFORMANCE

With legendary VQ V6 power under your right foot, a next-generation CVT to keep you in the meat of the powerband, and a sport-tuned suspension to hunt down corners, Maxima is a driver's dream come true. And with the standard Drive Mode Selector, you can switch between sport sedan and luxurious cruiser at the touch of a button.

Xtronic CVT⁸ / 300-hp, 3.5-L VQ V6 Engine / Drive Mode Selector

SEAMLESS CONNECTIVITY

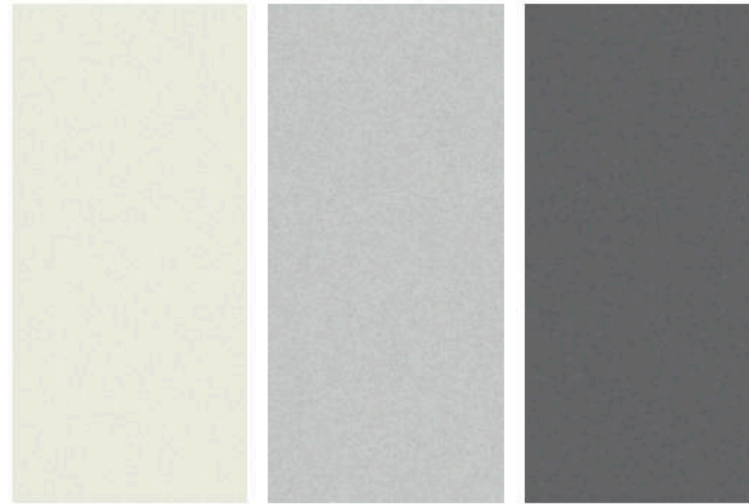
Apple CarPlay™ takes many of the things you want to do with your compatible iPhone® while driving, and puts them right on Maxima's built-in display.³ Android Auto™ was designed with safety in mind, with larger touch targets, a simplified interface, and easy-to-use voice actions. It's designed to integrate with your Maxima, minimizing distraction so you can stay focused on the road.³



android auto

Works with Apple CarPlay

CHOOSE YOUR COLOR

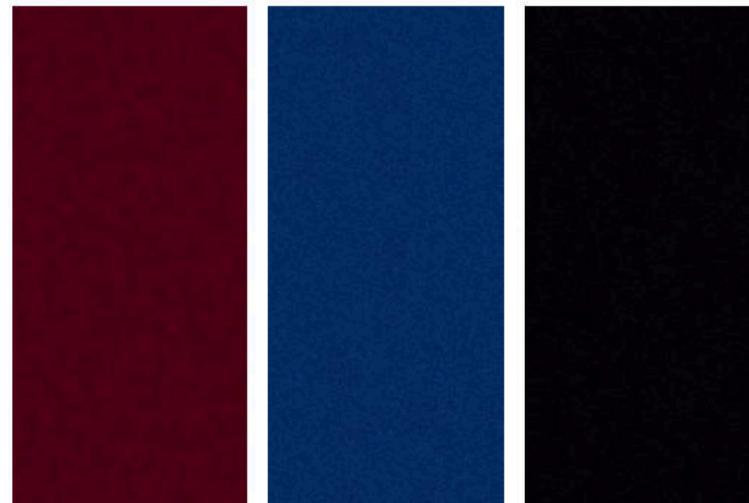


Pearl White® QAB

Brilliant Silver K23

Gun Metallic KAD

	S	SV	SL	SR	PLT
CHARCOAL CLOTH	<input checked="" type="checkbox"/>				
CHARCOAL LEATHER		<input checked="" type="checkbox"/>	<input checked="" type="checkbox"/>	<input checked="" type="checkbox"/>	<input checked="" type="checkbox"/>
CASHMERE LEATHER		<input checked="" type="checkbox"/>	<input checked="" type="checkbox"/>		<input checked="" type="checkbox"/>
CAMEL LEATHER				<input checked="" type="checkbox"/>	



Carnelian Red® NBM

Deep Blue Pearl RAY

Super Black KH3

	S	SV	SL	SR	PLT
CHARCOAL CLOTH	<input checked="" type="checkbox"/>				
CHARCOAL LEATHER		<input checked="" type="checkbox"/>	<input checked="" type="checkbox"/>	<input checked="" type="checkbox"/>	<input checked="" type="checkbox"/>
CASHMERE LEATHER		<input checked="" type="checkbox"/>	<input checked="" type="checkbox"/>		<input checked="" type="checkbox"/>
CAMEL LEATHER				<input checked="" type="checkbox"/>	

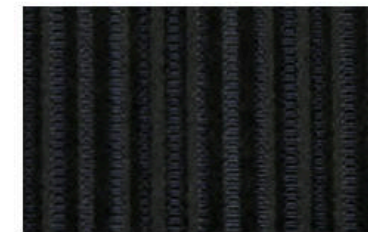
Standard

Nissan has taken care to ensure that the color swatches presented here are the closest possible representations of actual vehicle colors. Swatches may vary slightly due to the printing process and whether viewed in daylight, fluorescent or incandescent light. Please see the actual colors at your local Nissan dealer.

CHOOSE YOUR INTERIOR



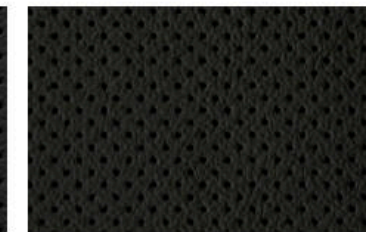
Nissan Maxima® Platinum shown in Cashmere Leather.



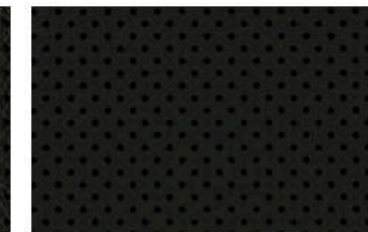
Charcoal Cloth
S



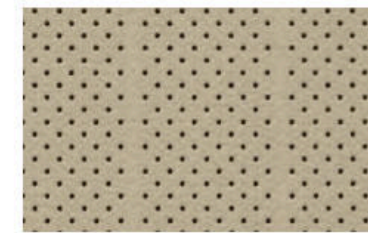
Charcoal Leather
SV | SL



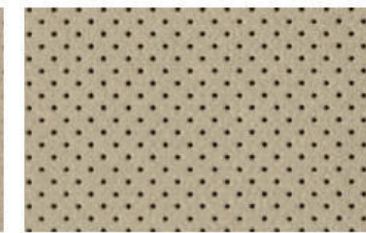
Charcoal Leather
Platinum



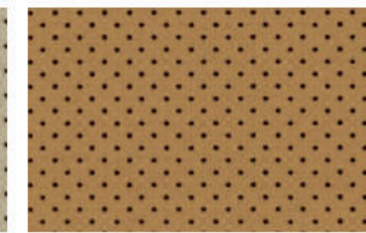
Charcoal Leather
with Alcantara® Inserts
SR



Cashmere Leather
SV | SL



Cashmere Leather
Platinum



Camel Leather
with Alcantara® Inserts
SR

CHOOSE YOUR TRIM LEVEL

S

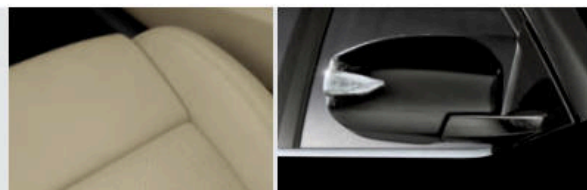
- 3.5-liter V6 engine with 300 hp and 261 lb-ft of torque
- Xtronic CVT® (Continuously Variable Transmission)
- 18" Machine-finished aluminum-alloy wheels
- Drive Mode Selector with Sport or Normal modes
- LED Daytime Running Lights
- Taillights with integrated LED signature
- Advanced Drive-Assist® Display^{9, 10}
- 8.0" multi-touch control color monitor
- Nissan Navigation System¹¹
- Nissan Voice Recognition for navigation and audio¹¹
- Apple CarPlay™³
- Android Auto™³
- SiriusXM® Traffic and Travel Link with 3-month complimentary trial access³
- Hands-free Text Messaging Assistant¹²
- Display Commander
- Bluetooth® Hands-Free Phone System³
- Dual Zone Automatic Temperature Control
- HomeLink® Universal Transceiver

- Nissan Intelligent Key® with Push Button Ignition
- Remote Engine Start System² with Intelligent Climate Control
- 8-way power driver's seat
- 4-way power front-passenger's seat
- Cloth seat trim with leather-wrapped steering wheel and shift knob
- "Razor Steel" faceted interior trim
- AM/FM/CD audio system with eight speakers
- SiriusXM® Satellite Radio with 3-month complimentary trial access³
- Two USB ports¹³
- Streaming audio via Bluetooth® wireless technology³
- Intelligent Forward Collision Warning⁴
- Automatic Emergency Braking⁵
- Tire Pressure Monitoring System (TPMS) with Easy-Fill Tire Alert^{14, 15}
- Vehicle Dynamic Control (VDC)¹⁶ with Traction Control System (TCS)
- Nissan Advanced Air Bag System¹⁷



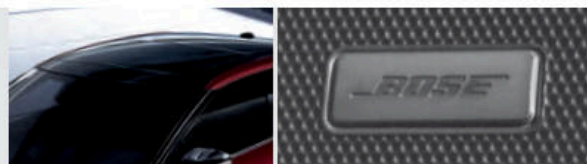
SV INCLUDES S EQUIPMENT PLUS:

- Leather-appointed seats
- Heated front seats
- Power heated outside mirrors with LED turn signal indicators
- Front and Rear Sonar System¹⁸
- Driver's seat power lumbar support
- Driver's seat manual thigh support extension



SL INCLUDES SV EQUIPMENT PLUS:

- Dual Panel Power Panoramic Moonroof with one-touch open/close
- Intelligent Cruise Control¹⁹
- Adjustable ambient LED interior lighting
- Heated steering wheel
- Bose® Premium Audio System with 11 speakers, including Bose® Centerpoint® 2 Surround Technology
- Active Noise Cancellation
- Active Sound Enhancement
- Two rear USB ports¹³
- Blind Spot Warning⁶
- Rear Cross Traffic Alert²⁰



SR INCLUDES SL EQUIPMENT PLUS:

- 19" Machine-finished aluminum-alloy wheels
- Paddle shifters
- Integrated Dynamics-control Module – Active Ride Control, Intelligent Trace Control,²¹ Intelligent Engine Brake
- Sport-tuned suspension
- LED low-beam projector headlights
- Climate-controlled front seats (heated and cooled)

- Premium Ascot Leather-appointed seats with diamond-quilted Alcantara® inserts
- Premium Ascot Leather-wrapped steering wheel with Alcantara® insert
- "Liquid Chrome" faceted interior trim
- Aluminum sport pedals
- Deletes Dual Panel Power Panoramic Moonroof



PLATINUM INCLUDES SL EQUIPMENT PLUS:

- LED low-beam projector headlights
- Outside mirrors with reverse tilt-down feature
- Auto-dimming driver-side outside mirror
- NissanConnect® Services powered by SiriusXM³
- Intelligent Around View® Monitor⁷
- Intelligent Driver Alertness²²
- Power tilt/telescoping steering column
- Rain-sensing variable intermittent windshield wipers
- Rear-window power sunshade

- 6-way power front-passenger's seat
- Memory System – driver's seat, steering wheel and outside mirrors
- Climate-controlled front seats (heated and cooled)
- Premium Ascot Leather-appointed seats with diamond-quilted leather inserts
- Premium Ascot Leather-wrapped steering wheel
- Mahogany wood-tone faceted interior trim



CHOOSE YOUR ACCESSORIES



Every Genuine Nissan Accessory is custom-fit, custom-designed and durability-tested. Each one is also backed by Nissan's 3-year/36,000-mile (whichever occurs first) limited warranty (if installed by dealer at the time of purchase).²³ Ask your dealer whether a specific Genuine Nissan Accessory may be financed when installed by the dealer at the time of purchase.

A. Premium Spoiler

A fitting end to a breathtaking design.

B. 18" Aluminum-alloy Wheels

Aggressively styled, exclusively for Maxima.

C. Wireless Smartphone Charger¹³

No cable, no worries. Power up on the go.

D. Illuminated Kick Plates and Interior Accent Lighting

For a grand entrance every time. (Sold separately)

E. All-season Floor Mats, Sport Carpeted Floor Mats, and Carpeted Floor Mats

Skip the mud, and other messes. (Sold separately)

F. Shift Knobs

Pick your hands-down favorite.

G. Nissan WiFi & Apps³

Get on the road and online.

H. Trunk Protector

Helps preserve and protect your cargo.

Additional Accessories:

- Interior Trim Appliqués
- Hideaway Trunk Net²⁴
- Trunk Organizer²⁴
- Carpeted Trunk Mat
- Shopping Bag Hooks
- And More

GENUINE NISSAN ACCESSORIES

TURN BRAND-NEW INTO ALL YOU

For more information and to shop online for Maxima® Genuine Nissan Accessories, go to bit.ly/18maxima-estore



To see Genuine Nissan Accessories in action, go to bit.ly/18maxima_gna

Nissan Maxima® SR shown in Pearl White with Sport Spoiler, Splash Guards, Rocker Panel Moldings, Rear Diffuser, 19" Aluminum-alloy Wheels, and External Ground Lighting.

SPECIFICATIONS

Engine	S	SV	SL	SR	PLT
3.5-liter DOHC 24-valve V6 engine	■	■	■	■	■
—Horsepower – 300 hp @ 6,400 rpm					
—Torque – 261 lb-ft @ 4,400 rpm					
Continuously Variable Valve Timing Control System (CVTCS) on intake and exhaust valves	■	■	■	■	■
Nissan Direct Ignition System	■	■	■	■	■
Electronic drive-by-wire throttle	■	■	■	■	■

Drivetrain	S	SV	SL	SR	PLT
Front engine/Front-wheel Drive	■	■	■	■	■
Xtronic CVT® (Continuously Variable Transmission) with Drive Mode Selector and manual mode	■	■	■	■	■
Paddle shifters				■	
Integrated Dynamics-control Module – Active Ride Control, Intelligent Trace Control, ²¹ Intelligent Engine Brake				■	

Brakes	S	SV	SL	SR	PLT
12.60" x 1.10" front and 12.13" x 0.63" rear vented discs	■	■	■	■	■
4-wheel Anti-lock Braking System (ABS)	■	■	■	■	■
Electronic Brake force Distribution (EBD)	■	■	■	■	■
Brake Assist ²⁵	■	■	■	■	■

Suspension/Chassis Bracing/Steering	S	SV	SL	SR	PLT
Independent strut front suspension	■	■	■	■	■
Independent multi-link rear suspension	■	■	■	■	■
Hollow-tube front and rear stabilizer bar	■	■	■	■	■
Sport-tuned suspension – retuned dampers, stiffer springs and larger front stabilizer bar				■	
Front strut tower and rear chassis reinforcement	■	■	■	■	■
Hydro-electric power steering	■	■	■	■	■

Wheels/Tires	S	SV	SL	SR	PLT
18" x 8.0" machine-finished aluminum-alloy wheels	■	■	■		■
19" x 8.0" machine-finished aluminum-alloy wheels				■	
P245/45R18 V-rated all-season tires	■	■	■		■
P245/40R19 W-rated all-season tires				■	

Exterior Features	S	SV	SL	SR	PLT
LED Daytime Running Lights	■	■	■	■	■
Halogen headlights	■	■	■		
LED low-beam projector headlights				■	■
Intelligent Auto Headlights	■	■	■	■	■
Fog lights	■	■	■	■	■
Taillights with integrated LED signature	■	■	■	■	■
Dual mufflers with rolled chrome-tipped finishers	■	■	■	■	■
Dual power outside mirrors	■				
Power heated outside mirrors with LED turn signal indicators		■	■	■	■
Outside mirrors with reverse tilt-down feature					■
Auto-dimming driver-side outside mirror					■
Dual Panel Power Panoramic Moonroof			■		■

■ Standard

Comfort/Convenience	S	SV	SL	SR	PLT
Advanced Drive-Assist® Display ^{2,10}	■	■	■	■	■
8.0" multi-touch control color monitor	■	■	■	■	■
Nissan Navigation System ¹¹	■	■	■	■	■
NissanConnect® Services powered by SiriusXM ^{®3}					■
Nissan Voice Recognition for navigation and audio ¹¹	■	■	■	■	■
Apple CarPlay™ ³	■	■	■	■	■
Android Auto™ ³	■	■	■	■	■
SiriusXM® Traffic and Travel Link with 3-month complimentary trial access ³	■	■	■	■	■
Hands-free Text Messaging Assistant ¹²	■	■	■	■	■
Display Commander	■	■	■	■	■
RearView Monitor ²⁶	■	■	■		■
Intelligent Around View® Monitor ⁷		■	■	■	■
Front and Rear Sonar System ¹⁸	■	■	■	■	■
Bluetooth® Hands-free Phone System ³	■	■	■	■	■
Dual Zone Automatic Temperature Control with in-cabin microfilter and rear vents	■	■	■	■	■
HomeLink® Universal Transceiver	■	■			
Cruise control				■	■
Intelligent Cruise Control ¹⁹			■	■	■
Intelligent Driver Alertness ²²					■
Auto-dimming inside rearview mirror	■	■	■	■	■
Nissan Intelligent Key® with Push Button Ignition	■	■	■	■	■
Remote Engine Start System ² with Intelligent Climate Control	■	■	■	■	■
Power-tilt/telescoping steering column					■
Rain-sensing variable intermittent windshield wipers					■
Adjustable ambient LED interior lighting			■	■	■
Rear-window power sunshade					■

Seating/Appointments	S	SV	SL	SR	PLT
8-way power driver's seat	■	■	■	■	■
4-way power front-passenger's seat	■	■	■	■	
6-way power front-passenger's seat					■
Memory System – driver's seat, steering wheel and outside mirrors					■
Driver's seat power lumbar support		■	■	■	■
Driver's seat manual thigh support extension		■	■	■	■
Heated front seats					■
Climate-controlled front seats (heated and cooled)				■	■
Heated steering wheel			■	■	■
60/40 Split fold-down rear seatbacks	■	■	■	■	■
Leather-appointed seats		■	■		
Premium Ascot Leather-appointed seats with diamond-quilted Alcantara® inserts				■	
Premium Ascot Leather-appointed seats with diamond-quilted leather inserts					■
Leather-wrapped steering wheel	■	■	■		
Premium Ascot Leather-wrapped steering wheel with Alcantara® insert				■	
Premium Ascot Leather-wrapped steering wheel					■
Leather-wrapped shift knob	■	■	■	■	■

Seating/Appointments (continued)	S	SV	SL	SR	PLT
"Razor Steel" faceted trim	■	■	■		
"Liquid Chrome" faceted trim				■	
Mahogany wood-tone faceted trim					■
Aluminum sport pedals				■	

Audio/Entertainment	S	SV	SL	SR	PLT
AM/FM/CD audio system with eight speakers	■	■			
Bose® Premium Audio System with 11 speakers, including Bose® Centerpoint® 2 Surround Technology			■	■	■
Active Noise Cancellation			■	■	■
Active Sound Enhancement			■	■	■
Two USB ports ¹⁵	■	■			
Four USB ports ¹⁵			■	■	■
SiriusXM® Satellite Radio with 3-month complimentary trial access ³	■	■	■	■	■
HD Radio®	■	■	■	■	■
Streaming audio via Bluetooth® wireless technology ³	■	■	■	■	■

Safety/Security	S	SV	SL	SR	PLT
Nissan Advanced Air Bag System with supplemental front air bags with seat belt and occupant-classification sensors ¹⁷	■	■	■	■	■
Driver and front-passenger seat-mounted side-impact supplemental air bags ¹⁷	■	■	■	■	■
Roof-mounted curtain supplemental air bags with rollover sensor for side-impact and rollover head protection for front and rear-seat outboard occupants ¹⁷	■	■	■	■	■
Vehicle Dynamic Control (VDC) ¹⁶ with Traction Control System (TCS)	■	■	■	■	■
Intelligent Forward Collision Warning ⁴	■	■	■	■	■
Automatic Emergency Braking ⁵			■	■	■
Blind Spot Warning ⁶			■	■	■
Rear Cross Traffic Alert ²⁰			■	■	■
LATCH System (Lower Anchors and Tethers for Children)	■	■	■	■	■
Tire Pressure Monitoring System (TPMS) with Easy-Fill Tire Alert ^{14,15}	■	■	■	■	■

DIMENSIONS/CAPACITIES

Exterior Dimensions – Inches	
Exterior	
Wheelbase	109.3
Overall length	92.8/73.2/56.5

Interior Dimensions – Inches	
Interior	
Head room (front/rear)	39.4/36.7
Head room with Dual Panel Moonroof (front/rear)	38.9/35.8
Leg room (front/rear)	45.0/34.2
Hip room (front/rear)	54.2/53.5
Shoulder room (front/rear)	56.7/55.7

Capacities	
Seating capacity	5
EPA interior passenger volume without moonroof (cu. ft.)	98.6
EPA interior passenger volume with moonroof (cu. ft.)	96.9
EPA cargo volume (cu. ft.)	14.3
Fuel tank (gals.)	18.0

2018 EPA Fuel Economy Estimates					
City/Highway/Combined MPG	S	SV	SL	SR	PLT
		21/30/25	21/30/25	21/30/25	21/30/25
— Actual mileage may vary with driving conditions – use for comparison only.					

NISSAN ROADSIDE ASSISTANCE

Your peace of mind is on us. For 36 months or 36,000 miles, whichever comes first, your new Nissan is covered for the following:³

- Flat-tire changes
- Trip Interruption benefits
- Vehicle lockouts
- Emergency fuel delivery
- Jump starts

Follow Nissan on:



visit NissanUSA.com/maxima

PRINTED IN POLAND