

NISSAN INTELLIGENT MOBILITY™

Nissan Intelligent Mobility guides everything we do. We're using new technologies to transform cars from mere driving machines into assistants. Together the journey is more confident, connected, and exciting. Whether it's cars that assist in the driving task, or highways that charge your EV as you go along, it's all in the very near future. And it's a future already taking shape in the Nissan you drive today.



Innovation
that excites

2020
MAXIMA®

SEE MAXIMA® COME TO LIFE

Go to NissanUSA.com and find an interactive brochure for Maxima and every Nissan model in the lineup. Available on desktop, smartphone, or tablet, it's the full product story – including demos, videos, and complete info on trims, colors, and accessories.



¹Driving is serious business and requires your full attention. If you have to use the connected device while driving, exercise extreme caution at all times so full attention may be given to vehicle operation. ²Available feature(s). ³Zero Gravity seats for outboard passengers only. ⁴State laws may apply. Review before using. ⁵Availability of features vary by vehicle model year, model, trim level, packaging, and options. ⁶Intelligent Lane Intervention and Lane Departure Warning operate only when lane markings are detectable. See Owner's Manual for safety information. ⁷Automatic Emergency Braking with Pedestrian Detection cannot prevent all collisions and may not provide warning or braking in all conditions. Driver should monitor traffic conditions and brake as needed to prevent collisions. See Owner's Manual for safety information. ⁸Rear Automatic Braking cannot prevent all collisions and may not provide warning or braking in all conditions. Driver should monitor traffic conditions and brake as needed to prevent collisions. See Owner's Manual for safety information. ⁹Intelligent Around View® Monitor cannot eliminate blind spots and may not detect every object. Driver should always turn and check surroundings before driving. See Owner's Manual for safety information. ¹⁰Available services/features may be shown. Compatible connected device may be required. Only use services/features and device when safe and legal to do so. Subject to GPS and wireless network availability and connection, and system/technology limitations. Text rates/data usage/subscription may apply. Some services/features provided by companies not within Nissan or its partners' or agents' control and may be discontinued at any time. For more information, see dealer, Owner's Manual, or NissanUSA.com/connect/important-information. ¹¹Use Hands Free Text Messaging when parked in a safe location. If you must use while driving, monitor traffic conditions and keep both hands on the steering wheel to prevent collisions. Compatible device required. Message and data rates may apply. ¹²Never program while driving. GPS mapping may not be detailed in all areas or reflect current road status. ¹³Extra cost option. ¹⁴Intelligent Forward Collision Warning cannot prevent collisions. See Owner's Manual for safety information. ¹⁵Blind Spot Warning cannot prevent collisions and may not detect every object or warn in all situations. Driver should always turn and look before changing lanes. See Owner's Manual for safety information. ¹⁶Rear Cross Traffic Alert may not detect all vehicles. See Owner's Manual for safety information. ¹⁷RearView Monitor may not detect every object and does not eliminate blind spots or warn of moving objects. See Owner's Manual for safety information. ¹⁸Sonar System may not detect every object. Driver should always check surroundings before driving. See Owner's Manual for safety information. ¹⁹Vehicle Dynamic Control cannot prevent collisions due to abrupt steering, carelessness, or dangerous driving techniques. It should remain on when driving, except when freeing the vehicle from mud or snow. See Owner's Manual for safety information. ²⁰Intelligent Trace Control cannot prevent collisions or loss of control. Driver should remain in control of vehicle at all times. See Owner's Manual for safety information. ²¹Intelligent Driver Alertness cannot provide a warning in every situation. See Owner's Manual for safety information. ²²See Owner's Manual for safety information. ²³Air bags are only a supplemental restraint system. Always wear your seat belt. Rear-facing child restraints should not be placed in the front-passenger's seat. All children 12 and under should ride in the rear seat properly secured in child restraints, booster seats, or seat belts according to their size. Air bags will only inflate in certain accidents. See Owner's Manual for safety information. ²⁴Tire Pressure Monitoring System is not a substitute for regular tire pressure checks. See Owner's Manual for safety information. ²⁵Vehicle must be on for the Easy-Fill Tire Alert to operate. ²⁶Intelligent Cruise Control uses limited braking and is not a collision avoidance or warning system. Driver should monitor traffic conditions and brake as needed to prevent collisions. See Owner's Manual for safety information. ²⁷Genuine Nissan Accessories are covered by Nissan's Limited Warranty on Genuine Nissan Replacement Parts, Genuine NISMO® S-Tune Parts, and Genuine Nissan Accessories for the longer of 12 months/12,000 miles (whichever occurs first) or the remaining period under the 3-year/36,000-mile (whichever occurs first) Nissan New Vehicle Limited Warranty. Terms and conditions apply. See dealer, Warranty Information Booklet, or parts.NissanUSA.com for details. ²⁸Cargo shown for display purposes only. Cargo and load capacity limited by weight and distribution. Always secure cargo. ²⁹Brake Assist cannot prevent all collisions and may not provide warning or braking in all conditions. Driver should monitor traffic conditions and brake as needed to prevent collisions. See Owner's Manual for safety information. ³⁰Driving is serious business and requires your full attention. If you have to use the feature while driving, exercise extreme caution at all times so full attention may be given to vehicle operation. ³¹Information displayed is dependent on how vehicle is equipped. ³²2020 EPA Fuel Economy Estimates 20/30/24 (City/Highway/Combined). Actual mileage may vary with driving conditions. Use for comparison only. ³³For a period of 36 months/36,000 miles from the date the vehicle is delivered to the first retail buyer or otherwise put into use, whichever is earlier. Alcantara® is a registered trademark of Alcantara S.p.A. Corporation. Android Auto™, Google Assistant, Google Maps™ and other marks are trademarks of Google LLC. The Google Assistant is not available in certain language and countries. Apple CarPlay® and Apple Music® are registered trademarks of Apple, Inc. Bluetooth® word mark and logos are owned by Bluetooth SIG, Inc. Bose® and Centerpoint® are registered trademarks of The Bose Corporation. ChromaFlair® is a registered trademark of Optical Coating Laboratory, LLC. Facebook® is a registered trademark of Facebook, Inc. HD Radio® is a registered trademark of iBiquity Digital Corporation. HomeLink® is a registered trademark of Gentex Corporation. iPhone® is a registered trademark of Apple, Inc. All rights reserved. iTunes® is a registered trademark of Apple, Inc. Siri® is a registered trademark of Apple, Inc. The Sirius®, XM®, and SiriusXM® names and all related marks and logos are trademarks of Sirius XM Radio Inc. Twitter® is a registered trademark of Twitter, Inc. YouTube® is a registered trademark of Google LLC. This brochure is intended for general descriptive and informational purposes only. It is subject to change and does not constitute an offer, representation or warranty (express or implied) by Nissan North America, Inc. Interested parties should confirm the accuracy of any information in this brochure as it relates to a vehicle directly with Nissan North America, Inc. before relying on it to make a purchase decision. Nissan North America, Inc. reserves the right to make changes, at any time, without prior notice, in prices, colors, materials, equipment, specifications, and models and to discontinue models or equipment. Due to continuous product development and other pre- and post-production factors, actual vehicle, materials and specifications may vary from this brochure. Some vehicles shown with optional equipment. See the actual vehicle for complete accuracy. Availability and delivery times for particular models or equipment may vary. Specifications, options and accessories may differ in Hawaii, U.S. territories and other countries. For additional information on availability, options or accessories, see your Nissan dealer or contact Nissan North America, Inc. At NissanUSA.com, you'll find virtual product demonstrations, a way to "build your own Nissan," a dealer locator, and more information about key Nissan support services. Or if you'd prefer, call 1-800-NISSAN-3 for answers to specific questions about Maxima® or any other Nissan vehicle. The Nissan names, logos, product names, feature names, and slogans are trademarks owned by or licensed to Nissan Motor Co. Ltd. and/or its North American subsidiaries. Other trademarks and trade names are those of their respective owners. **Always wear your seat belt, and please drive responsibly.** ©2019 Nissan North America, Inc. ¹20 Maxima® 2001028-N-8/20-60M-CG1

NISSAN INTELLIGENT MOBILITY™



This isn't just the 4-Door Sports Car,[®] it's a high-tech powerhouse. Change from a premium ride to canyon carver at the touch of a button. Feel more confident, thanks to available advanced driver assist technologies, and for seamless connectivity, just plug in your compatible smartphone.¹ All so you can focus on what matters most – a thrilling drive. This is tech that raises your pulse. This is Nissan Intelligent Mobility.

Nissan Maxima[®] SR shown in Sunset-Drift ChromaFlair[®] with accessory Splash Guards.

PURE AMBIENCE

Technically, the term is "wow". There's no better way to describe it - the perfect execution of driving function with elegance and style. The quality of materials. The ideal placement of controls. The long list of luxuries you expect - and a few you hadn't even thought of. It's clear that a great deal of time was spent, so that every moment in the new Maxima® feels special.

Semi-aniline Leather-appointed seats²

Zero Gravity Front Seats³

Climate-controlled front seats²

Dual Panel Panoramic Moonroof²

Remote Engine Start System⁴ with Intelligent Climate Control

Heated rear seats²

Adjustable ambient LED lighting²

Genuine stitching on dashboard, doors, and console

Nissan Maxima® Platinum Reserve shown in Rakuda Tan Semi-aniline Leather.



**MAXIMA® SR:
AN ENTHUSIAST'S WISH LIST**

Start with 19" gloss black aluminum-alloy wheels, a Dual Panel Panoramic Moonroof, and a unique sport-tuned suspension with advanced dynamic technologies. Add in a special interior with Premium Ascot Leather appointments, Alcantara® inserts on the seats and steering wheel, and "Satin Dark Chrome" faceted interior trim. The result – a driving experience that's exhilarating in every sense of the word.



A MORE CONFIDENT, EXCITING AND CONNECTED RIDE.
Nissan Intelligent Mobility is changing how you move forever. You'll drive with greater awareness and can even get an assist when you need it. Everything gets easier too, as you seamlessly sync from your smartphone to your Maxima and the world around you. This is the future of driving, and it's here for everyone right now.⁵

- Intelligent Lane Intervention^{2,6}
- Automatic Emergency Braking with Pedestrian Detection⁷
- Rear Automatic Braking⁸
- Intelligent Around View® Monitor^{2,9}

CUSTOMIZED PERFORMANCE

With legendary VQ V6 power under your right foot and a next-generation Xtronic CVT® (Continuously Variable Transmission) to keep you in the meat of the powerband, Maxima is a driver's dream come true. And with the standard Drive Mode Selector, you can switch between sport sedan and luxurious cruiser at the touch of a button.



- Xtronic CVT
- 300-hp, 3.5-L VQ V6 Engine
- Drive Mode Selector

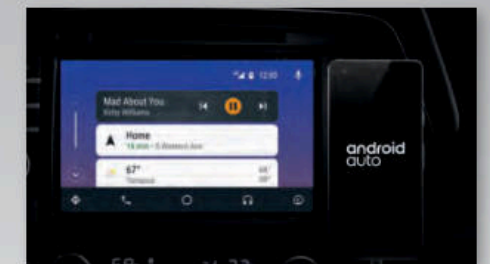
SEAMLESS CONNECTIVITY



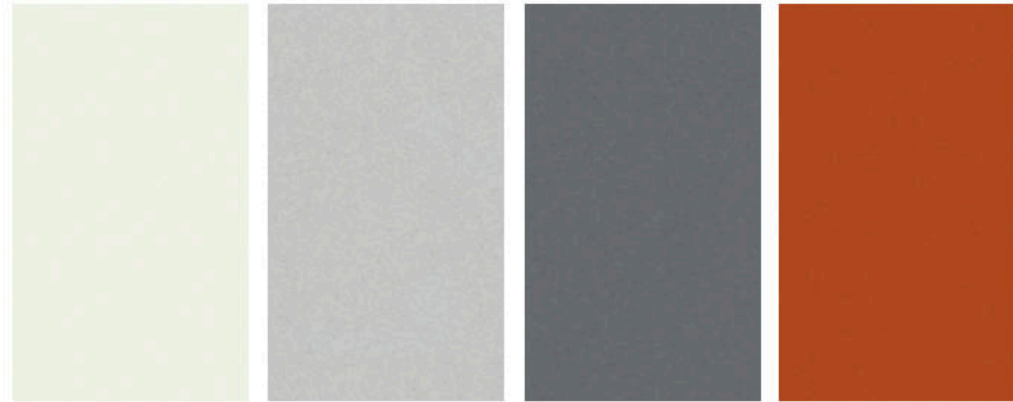
People to see? Places to be? Just ask Siri.[®] Equipped with Siri,[®] Apple CarPlay[®] (shown to the right) brings on board to your Maxima your contacts, favorite audio apps, Apple Maps, and more. You can even use your steering wheel controls to adjust volume and toggle through screens. Simply plug in your compatible iPhone[®] and go.^{1,10}



Know where you're going and when. Google Maps[™] helps you navigate to your next appointment, while your Google Assistant keeps you on top of your schedule. Choose a song, change your destination, or respond to a text with your hands on the wheel using the hundreds of available voice commands.^{10, 11, 12}



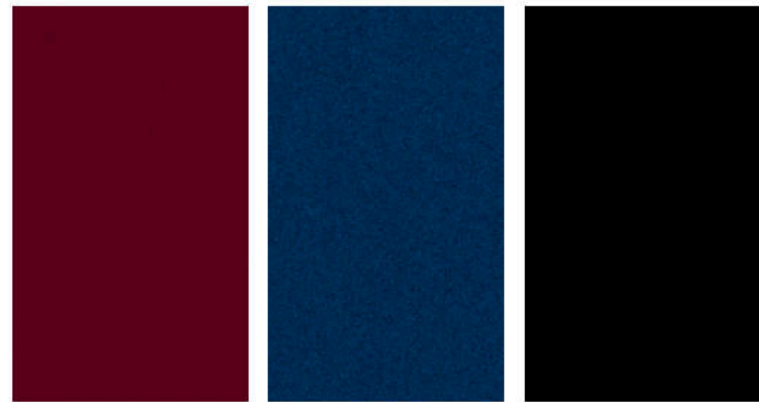
CHOOSE YOUR COLOR



Pearl White TriCoat¹³ Brilliant Silver Metallic Gun Metallic Sunset Drift ChromaFlair¹³

S SV SL SR PLT PR S SV SL SR PLT PR S SV SL SR PLT PR S SV SL SR PLT PR

CHARCOAL CLOTH	<input checked="" type="checkbox"/>																		
CHARCOAL LEATHER		<input checked="" type="checkbox"/>	<input checked="" type="checkbox"/>																
CASHMERE LEATHER		<input checked="" type="checkbox"/>	<input checked="" type="checkbox"/>																
CHARCOAL PREMIUM ASCOT LEATHER WITH ALCANTARA [®] INSERTS										<input checked="" type="checkbox"/>									
CHARCOAL PREMIUM ASCOT LEATHER																			<input checked="" type="checkbox"/>
CASHMERE PREMIUM ASCOT LEATHER																			<input checked="" type="checkbox"/>
RAKUDA TAN SEMI-ANILINE LEATHER																			<input checked="" type="checkbox"/>



Carnelian Red Tintcoat¹³ Deep Blue Pearl Super Black

S SV SL SR PLT PR S SV SL SR PLT PR S SV SL SR PLT PR

CHARCOAL CLOTH	<input checked="" type="checkbox"/>																		
CHARCOAL LEATHER		<input checked="" type="checkbox"/>	<input checked="" type="checkbox"/>																
CASHMERE LEATHER		<input checked="" type="checkbox"/>	<input checked="" type="checkbox"/>																
CHARCOAL PREMIUM ASCOT LEATHER WITH ALCANTARA [®] INSERTS																			<input checked="" type="checkbox"/>
CHARCOAL PREMIUM ASCOT LEATHER																			<input checked="" type="checkbox"/>
CASHMERE PREMIUM ASCOT LEATHER																			<input checked="" type="checkbox"/>
RAKUDA TAN SEMI-ANILINE LEATHER																			<input checked="" type="checkbox"/>

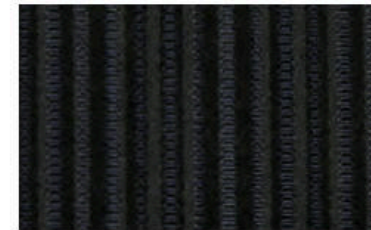
■ Standard

Nissan has taken care to ensure that the color swatches presented here are the closest possible representations of actual vehicle colors. Swatches may vary slightly due to the printing process and whether viewed in daylight, fluorescent or incandescent light. Please see the actual colors at your dealer.

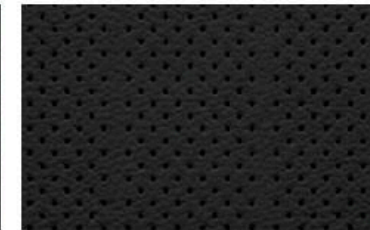
CHOOSE YOUR INTERIOR



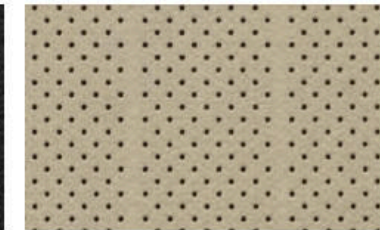
Nissan Maxima[®] Platinum Reserve shown in Rakuda Tan Semi-aniline Leather.



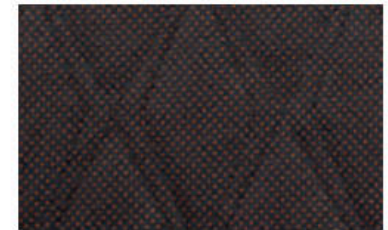
Charcoal Cloth S



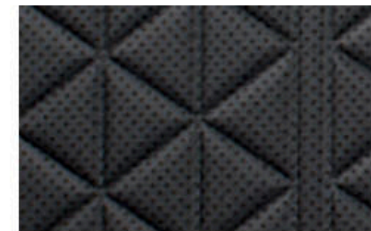
Charcoal Leather SV | SL



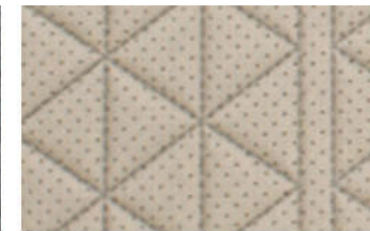
Cashmere Leather SV | SL



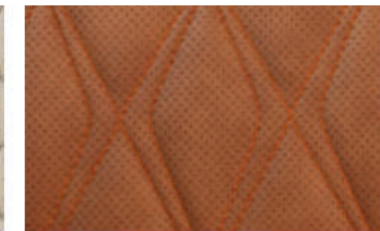
Charcoal Premium Ascot Leather with Alcantara[®] Inserts SR



Charcoal Premium Ascot Leather Platinum



Cashmere Premium Ascot Leather Platinum



Rakuda Tan Semi-aniline Leather Platinum Reserve

CHOOSE YOUR TRIM LEVEL

S

- 3.5 liter V6 engine with 300 hp and 261 lb-ft of torque
- Xtronic CVT® (Continuously Variable Transmission)
- Drive Mode Selector with Sport and Normal modes
- Intelligent Forward Collision Warning¹⁴
- Automatic Emergency Braking with Pedestrian Detection⁷
- Rear Automatic Braking⁸
- Lane Departure Warning⁵
- Blind Spot Warning¹⁵
- Rear Cross Traffic Alert¹⁶
- RearView Monitor¹⁷
- Rear Sonar System¹⁸
- Vehicle Dynamic Control¹⁹ (VDC) with Traction Control System (TCS)
- Integrated Dynamic-control Module – Active Ride Control, Intelligent Trace Control,²⁰ Intelligent Engine Brake
- High Beam Assist
- Intelligent Driver Alertness²¹
- 18" Machine-finished aluminum-alloy wheels
- LED headlights with LED signature Daytime Running Lights
- LED taillights with integrated LED signature
- Intelligent Auto Headlights
- Dual Zone Automatic Temperature Control
- Auto-dimming inside rearview mirror
- Nissan Intelligent Key® with Push Button Ignition
- Remote Engine Start System⁴ with Intelligent Climate Control
- Rear Door Alert²²
- 8-way power driver's seat
- 4-way power front passenger's seat
- Cloth seat trim with leather-wrapped steering wheel and shift knob
- "Satin Chrome" faceted interior trim
- NissanConnect® 8" touch-screen display¹⁰
- Apple CarPlay^{®10}
- Android Auto^{™10}
- Bluetooth® Hands-free Phone System¹⁰
- Hands-free Text Messaging Assistant¹¹
- Display Commander
- AM/FM/CD audio system with eight speakers
- One USB port and one USB-C port¹
- SiriusXM® Radio with 3-month complimentary trial access¹⁰
- Bluetooth® streaming audio¹⁰
- Nissan Advanced Air Bag System²³
- Tire Pressure Monitoring System (TPMS) with Easy-Fill Tire Alert^{24, 25}



SV INCLUDES S EQUIPMENT PLUS:

- Intelligent Cruise Control²⁶
- Traffic Sign Recognition
- Heated outside mirrors with LED turn signal indicators
- 8-way power driver's seat with power lumbar support
- Heated front seats
- Leather-appointed seats
- Nissan Door to Door Navigation with Premium Traffic¹²
- SiriusXM® Traffic and Travel Link® with 3-month complimentary trial access¹⁰
- HD Radio[®]



SL INCLUDES SV EQUIPMENT PLUS:

- Front and Rear Sonar System¹⁸
- Dual Panel Panoramic Moonroof with one-touch open/close
- HomeLink® Universal Transceiver
- Adjustable ambient LED lighting
- Front-passenger's seat power lifter
- Heated steering wheel
- Bose® Premium Audio System with 11 speakers, including Centerpoint® 2 surround technology
- Active Noise Cancellation
- Two USB ports and two USB-C ports¹



SR INCLUDES SL EQUIPMENT PLUS:

- Paddle shifters
- Sport-tuned suspension with retuned dampers, stiffer springs and larger front stabilizer bar
- Intelligent Lane Intervention⁶
- Intelligent Around View® Monitor⁹
- 19" Gloss black aluminum-alloy wheels
- LED fog lights
- Sport spoiler
- Outside mirrors with reverse tilt-down feature
- Auto-dimming driver-side outside mirror
- Memory System – driver's seat and outside mirrors
- Driver's seat manual thigh support extension
- Climate-controlled front seats (heated and cooled)
- Premium Ascot Leather-appointed seats with dynamic diamond-quilted Alcantara® inserts
- Premium Ascot Leather-wrapped steering wheel with Alcantara® insert
- "Satin Dark Chrome" faceted interior trim
- Charcoal headliner
- Aluminum sport pedals
- Active Sound Enhancement



PLATINUM INCLUDES SL EQUIPMENT PLUS:

- Intelligent Lane Intervention⁶
- Intelligent Around View® Monitor⁹
- 19" Machine-finished aluminum-alloy wheels
- LED fog lights
- Outside mirrors with reverse tilt-down
- Auto-dimming driver-side outside mirror
- Power-tilt/telescoping steering column
- Rain-sensing variable intermittent windshield wipers
- Rear-window power sunshade
- Memory System – driver's seat, steering wheel and outside mirrors
- Driver's seat manual thigh support extension
- Climate-controlled front seats (heated and cooled)
- Premium Ascot Leather-appointed seats with diamond-quilted leather inserts
- Premium Ascot Leather-wrapped steering wheel
- "Satin Birdseye Maple Wood" faceted interior trim
- NissanConnect® Services powered by SiriusXM® with complimentary trial access to 3-year Select and 6-month Premium Plus packages¹⁰



PLATINUM RESERVE INCLUDES PLATINUM EQUIPMENT PLUS:

- 19" Dark hyper silver aluminum-alloy wheels
- Heated rear seats
- Semi-aniline Leather-appointed seats with dynamic diamond-quilted leather inserts
- Leather-wrapped steering wheel with contrast insert
- "Satin Bronze" faceted interior trim
- Charcoal headliner



CHOOSE YOUR ACCESSORIES



Every Genuine Nissan Accessory is custom-fit, custom-designed and durability-tested. Each one is backed by Nissan's 3-year/36,000-mile (whichever occurs first) limited warranty (if installed by dealer at the time of purchase), and be financed when installed by dealer at the time of purchase.²⁷

A. Premium Spoiler

A fitting end to a breathtaking design.

B. 18" Aluminum-alloy Wheels

Aggressively styled, exclusively for Maxima.[®]



C. Dual Rear USB Charging Ports¹

Charge up with USB and state-of-the-art USB-C.

D. Illuminated Kick Plates and Interior Accent Lighting

For a grand entrance every time. (Sold separately)



E. All-Season Floor Mats, Sport Carpeted Floor Mats, and Carpeted Floor Mats

Skip the mud, and other messes. (Sold separately)

F. Stainless Steel Sport Pedals

Track-inspired grip and looks.



G. Impact Sensor

Chirps if bumped. Sounds alarm if wheel theft or break-in is detected.

H. All-Season Trunk Area Protector

Helps preserve and protect your cargo.

Additional Accessories:

- Interior Trim Appliqués
- Hideaway Trunk Net²⁸
- Trunk Organizer²⁸
- Sliding Trunk Organizer Tray²⁸
- Shift Knobs
- Carpeted Trunk Area Protector
- Shopping Bag Hook
- And More

GENUINE NISSAN ACCESSORIES

TURN BRAND-NEW INTO ALL YOU

For more information and to shop online for Maxima[®] Genuine Nissan Accessories, go to bit.ly/20maxima-estore



Nissan Maxima[®] SR shown in Pearl White TriCoat with Sport Spoiler (standard on SR), Splash Guards, Rocker Panel Moldings, Rear Bumper Diffuser, and Exterior Ground Lighting.

SPECIFICATIONS

Engine	S	SV	SL	SR	PLT	PR
3.5-liter DOHC 24-valve V6 engine	■	■	■	■	■	■
—Horsepower – 300 hp @ 6,400 rpm						
—Torque – 261 lb-ft @ 4,400 rpm						
Continuously Variable Valve Timing Control System (CVTCS) on intake and exhaust valves	■	■	■	■	■	■
Nissan Direct Ignition System	■	■	■	■	■	■
Electronic drive-by-wire throttle	■	■	■	■	■	■

Drivetrain	S	SV	SL	SR	PLT	PR
Front engine/Front-Wheel Drive	■	■	■	■	■	■
Xtronic CVT® (Continuously Variable Transmission) with Drive Mode Selector and manual mode	■	■	■	■	■	■
Paddle shifters				■		

Brakes	S	SV	SL	SR	PLT	PR
Front and rear vented discs	■	■	■	■	■	■
4-wheel Anti-lock Braking System (ABS)	■	■	■	■	■	■
Electronic Brake force Distribution (EBD)	■	■	■	■	■	■
Brake Assist ²⁹	■	■	■	■	■	■

Suspension/Chassis Bracing/Steering	S	SV	SL	SR	PLT	PR
Independent strut front suspension	■	■	■	■	■	■
Independent multi-link rear suspension	■	■	■	■	■	■
Hollow-tube front and rear stabilizer bar	■	■	■	■	■	■
Sport-tuned suspension – retuned dampers, stiffer springs and larger front stabilizer bar				■		
Front strut tower and rear chassis reinforcement	■	■	■	■	■	■
Hydro-electric power steering	■	■	■	■	■	■

Driver Assistance Technologies	S	SV	SL	SR	PLT	PR
Cruise control	■					
Intelligent Cruise Control ²⁶		■	■	■	■	■
Intelligent Forward Collision Warning ¹⁴	■	■	■	■	■	■
Automatic Emergency Braking with Pedestrian Detection ⁷	■	■	■	■	■	■
Rear Automatic Braking ⁸	■	■	■	■	■	■
Lane Departure Warning ⁶	■	■	■			
Intelligent Lane Intervention ⁶		■	■	■	■	■
Blind Spot Warning ¹⁵	■	■	■	■	■	■
Rear Cross Traffic Alert ¹⁶	■	■	■			
RearView Monitor ¹⁷	■	■	■			
Intelligent Around View® Monitor ⁹				■	■	■
Rear Sonar System ¹⁸	■	■	■	■	■	■
Front and Rear Sonar System ¹⁸			■	■	■	■
Vehicle Dynamic Control (VDC) ¹⁹ with Traction Control System (TCS)	■	■	■	■	■	■
Integrated Dynamics-control Module - Active Ride Control, Intelligent Trace Control, ²⁰ Intelligent Engine Brake	■	■	■	■	■	■
High Beam Assist		■	■	■	■	■
Traffic Sign Recognition		■	■	■	■	■
Intelligent Driver Alertness ²¹	■	■	■	■	■	■

Wheels/Tires	S	SV	SL	SR	PLT	PR
18" x 8.0" machine-finished aluminum-alloy wheels	■	■	■			

■ Standard

Wheels/Tires (continued)	S	SV	SL	SR	PLT	PR
19" x 8.5" gloss black aluminum-alloy wheels				■		
19" x 8.0" machine-finished aluminum-alloy wheels					■	
19" x 8.0" dark hyper silver aluminum-alloy wheels						■
P245/45R18 V-rated all-season tires	■	■	■			
P245/40R19 W-rated all-season tires				■	■	■

Exterior Features	S	SV	SL	SR	PLT	PR
LED headlights with LED signature Daytime Running Lights	■	■	■	■	■	■
LED fog lights				■	■	■
LED taillights with integrated LED signature	■	■	■	■	■	■
Intelligent Auto Headlights	■	■	■	■	■	■
Quad-tipped exhaust finishers	■	■	■	■	■	■
Sport spoiler				■		
Dual power outside mirrors	■					
Power heated outside mirrors with LED turn signal indicators		■	■	■	■	■
Outside mirrors with reverse tilt-down feature				■	■	■
Auto-dimming driver-side outside mirror				■	■	■
Dual Panel Panoramic Moonroof			■			
Dual Zone Automatic Temperature Control with in-cabin microfilter and rear vents	■	■	■	■	■	■
HomeLink® Universal Transceiver				■	■	■
Auto-dimming inside rearview mirror	■	■	■	■	■	■
Nissan Intelligent Key® with Push Button Ignition	■	■	■	■	■	■
Remote Engine Start System ⁴ with Intelligent Climate Control	■	■	■	■	■	■
Rear Door Alert ²²	■	■	■	■	■	■
Power-tilt/telescoping steering column					■	■
Rain-sensing variable intermittent windshield wipers					■	■
Adjustable ambient LED lighting				■	■	■
Rear-window power sunshade					■	■

Seating/Appointments	S	SV	SL	SR	PLT	PR
8-way power driver's seat	■					
8-way power driver's seat with power lumbar support		■	■	■	■	■
4-way power front-passenger's seat	■	■	■	■	■	■
Memory System – driver's seat and outside mirrors				■	■	■
Memory System – driver's seat, steering wheel, and outside mirrors					■	■
Driver's seat manual thigh support extension				■	■	■
Front-passenger's seat power lifter				■	■	■
60/40 Split fold-down rear seatbacks	■	■	■	■	■	■
Heated front seats		■	■	■	■	■
Climate-controlled front seats (heated and cooled)			■	■	■	■
Heated steering wheel			■	■	■	■
Heated rear outboard seats				■	■	■
Cloth seat trim		■	■			
Leather-appointed seats				■		
Premium Ascot Leather-appointed seats with dynamic diamond-quilted Alcantara® inserts					■	
Premium Ascot Leather-appointed seats with diamond-quilted leather inserts						■

Seating/Appointments (continued)	S	SV	SL	SR	PLT	PR
Semi-aniline Leather-appointed seats with dynamic diamond-quilted leather inserts						■
Leather-wrapped steering wheel	■	■	■			
Premium Ascot Leather-wrapped steering wheel with Alcantara® insert				■		
Premium Ascot Leather-wrapped steering wheel					■	
Leather-wrapped steering wheel with contrast insert						■
Leather-wrapped shift knob	■	■	■	■	■	■
"Satin Chrome" faceted interior trim	■	■	■			
"Satin Dark Chrome" faceted interior trim				■		
"Satin Birdseye Maple Wood" faceted interior trim					■	
"Satin Bronze" faceted interior trim						■
Charcoal headliner				■		■
Aluminum sport pedals						■

Infotainment	S	SV	SL	SR	PLT	PR
Advanced Drive-Assist® Display ^{30, 31}	■	■	■	■	■	■
NissanConnect® 8" touch-screen display ¹⁰	■	■	■	■	■	■
Nissan Door to Door Navigation with Premium Traffic ¹²				■	■	■
NissanConnect Services powered by SiriusXM® with complimentary trial access to 3-year Select and 6-month Premium Plus packages ¹⁰				■	■	■
Apple CarPlay ^{6, 10}	■	■	■	■	■	■
Android Auto ^{7, 10}	■	■	■	■	■	■
SiriusXM® Traffic and Travel Link® with 3-month complimentary trial access ¹⁰		■	■	■	■	■
Bluetooth® Hands-free Phone System ¹⁰	■	■	■	■	■	■
Hands-free Text Messaging Assistant ¹¹	■	■	■	■	■	■
Display Commander	■	■	■	■	■	■
AM/FM/CD audio system with eight speakers	■	■	■	■	■	■
Bose® Premium Audio System with 11 speakers, including Centerpoint® 2 surround technology				■	■	■
Active Noise Cancellation				■	■	■
Active Sound Enhancement				■	■	■
One USB port and one USB-C port ¹	■	■	■	■	■	■
Two USB ports and two USB-C ports ¹			■	■	■	■
SiriusXM® Radio with 3-month complimentary trial access ¹⁰	■	■	■	■	■	■
HD Radio®	■	■	■	■	■	■
Bluetooth® streaming audio ¹⁰	■	■	■	■	■	■

Safety/Security	S	SV	SL	SR	PLT	PR
Nissan Advanced Air Bag System with supplemental front air bags with seat belt and occupant-classification sensors ²³	■	■	■	■	■	■
Seat-mounted side-impact supplemental air bags for front- and rear-seat outboard occupants ²³	■	■	■	■	■	■
Driver and front-passenger knee supplemental air bags ²³	■	■	■	■	■	■
Roof-mounted curtain supplemental air bags with rollover sensor for side-impact and rollover head protection for front and rear-seat outboard occupants ²³	■	■	■	■	■	■
LATCH System (Lower Anchors and Tethers for Children)	■	■	■	■	■	■
Tire Pressure Monitoring System (TPMS) with Easy-Fill Tire Alert ^{24, 25}	■	■	■	■	■	■

DIMENSIONS/CAPACITIES/WEIGHTS/MPG

Exterior Dimensions – Inches	
Exterior	
Wheelbase	109.3
Overall length/width/height	192.8/73.2/56.5

Interior Dimensions – Inches	
Interior	
Head room (front/rear)	39.4/36.7
Head room with Dual Panel Moonroof (front/rear)	38.9/35.8
Leg room (front/rear)	45.0/34.2
Hip room (front/rear)	54.2/53.5
Shoulder room (front/rear)	56.7/55.7

Capacities	
Seating capacity	5
EPA interior passenger volume without moonroof (cu. ft.)	98.5
EPA interior passenger volume with moonroof (cu. ft.)	96.4
EPA cargo volume (cu. ft.)	14.3
Fuel tank (gals.)	18.0

Curb Weights – Lbs.						
	S	SV	SL	SR	PLT	PR
	3,559	3,567	3,652	3,664	3,678	3,678

2020 EPA Fuel Economy Estimates ¹⁷						
City/Highway/Combined MPG	S	SV	SL	SR	PLT	PR
	20/30/24	20/30/24	20/30/24	20/30/24	20/30/24	20/30/24

NISSAN ROADSIDE ASSISTANCE

Your peace of mind is on us. For 36 months or 36,000 miles, whichever comes first, your new Nissan vehicle is covered for the following:³³

- Flat-tire changes
- Trip Interruption benefits
- Jump starts
- Vehicle lockouts
- Emergency fuel delivery

Follow Nissan on:



visit NissanUSA.com/maxima

PRINTED IN POLAND