



Innovation  
that excites

2017  
**MURANO**<sup>®</sup>

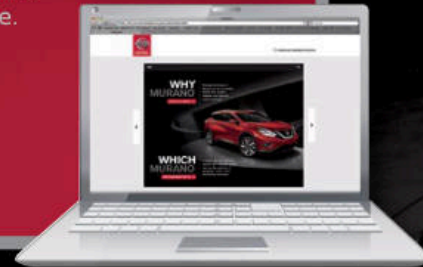
### SWIPE FOR MORE INFO

Download the Interactive Brochure Hub app on your tablet and you'll have Murano<sup>®</sup> and the whole Nissan lineup at your fingertips. Get the full product story enhanced with interactive demos and videos, plus complete info on trim levels, colors, accessories, and more.



Nissan Interactive Brochure Hub available free on the App Store<sup>®</sup> and Google Play.<sup>®</sup>

Or go to [NissanUSA.com](http://NissanUSA.com) to view on your desktop.



Your peace of mind is on us. For 36 months or 36,000 miles, whichever comes first, your new Nissan is covered for the following:<sup>1</sup>

- Flat-tire changes
- Trip Interruption benefits
- Jump starts
- Vehicle lockouts
- Emergency fuel delivery

Follow Nissan on:



visit [NissanUSA.com/murano](http://NissanUSA.com/murano)

<sup>1</sup>Roadside Assistance and Trip Interruption available during the first 3 years or 36,000 miles (whichever occurs first) after initial new vehicle delivery. Restrictions apply. See Owner's Manual for details. The App Store<sup>®</sup> logo is a registered trademark of Apple, Inc. All rights reserved. Facebook<sup>®</sup> is a registered trademark of Facebook, Inc. Google Play<sup>®</sup> is a registered trademark of Google, Inc. Twitter<sup>®</sup> is a registered trademark of Twitter, Inc. YouTube<sup>®</sup> is a registered trademark of Google Inc.

PRINTED IN POLAND



Innovation  
that excites

**TAKE ON** the experience that's designed around you. Say yes to a night out and the chance to turn heads. Reconnect with your real social network in the cushy lounge interior, perfect for relaxing or living it up. Tap in to technology that pumps the music from any seat and brings you closer together. The evening starts up when Murano® does. The 2017 Nissan Murano, the dynamic crossover that enhances your **LIFE**.



Nissan Murano® Platinum AWD shown in Pacific Sunset with optional equipment.



### INTUITIVE ALL-WHEEL DRIVE

Take on more. Murano's available AWD tackles a variety of terrains, while helping to keep you confident on the road. The 260-hp, 3.5-liter V6 engine provides impressive power without sacrificing efficiency.

|                           |                      |                   |
|---------------------------|----------------------|-------------------|
| Available All-Wheel Drive | 260-hp, 3.5-liter V6 | Hill Start Assist |
|---------------------------|----------------------|-------------------|

### NISSAN INTELLIGENT SAFETY SHIELD TECHNOLOGIES

Murano's available features have your back. And the rest of you, too. Whether you're changing lanes on the highway, making your way in traffic, or deftly maneuvering your way into a parking spot, Murano's Nissan Intelligent Safety Shield Technologies act as a second set of eyes, giving you a whole new way to double check.

|   |  |                                 |                                       |
|---|--|---------------------------------|---------------------------------------|
| Predictive Forward Collision Warning <sup>1</sup> | Forward Emergency Braking <sup>2</sup> | Blind Spot Warning <sup>3</sup> | Rear Cross Traffic Alert <sup>4</sup> |
|---|--|---------------------------------|---------------------------------------|

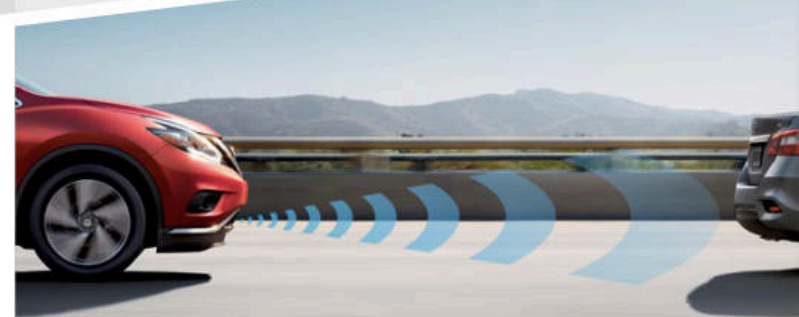


### A UNIQUE SOCIAL SPACE

Murano's lounge-like interior is designed to bring people together. The wider center console allows everyone to mingle without leaning or straining. And with meaningful available technology within arm's reach of any seat, Murano® makes every drive an all-inclusive trip.



# EXPECT THE EXCEPTIONAL



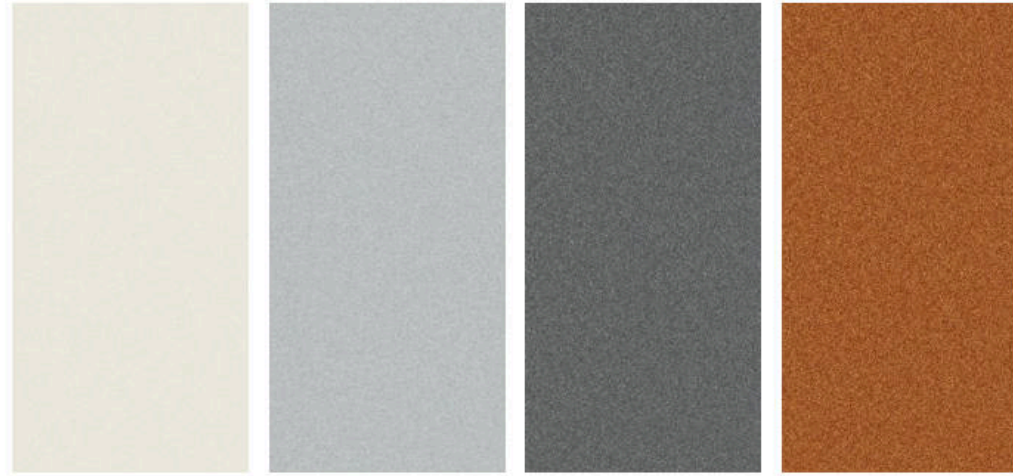
### INTELLIGENT CRUISE CONTROL

Unlike traditional systems that only maintain a set speed, the available Intelligent Cruise Control also helps maintain an adjustable set distance between you and the car in front of you. As traffic slows down or speeds up, Murano can respond accordingly.<sup>5</sup>

<sup>1</sup>PCW is intended to warn you before a collision occurs, it cannot prevent a collision. Speed and other limitations apply. See Owner's Manual for details. <sup>2</sup>FEB cannot prevent accidents due to carelessness or dangerous driving techniques. It may not provide warning or braking in certain conditions. Speed limitations apply. <sup>3</sup>Blind Spot Warning is not a substitute for proper lane change procedures. The system will not prevent contact with other vehicles or accidents. It may not detect every vehicle or object around you.

<sup>4</sup>Not a substitute for proper backing procedures. May not detect all moving vehicles. Speed and other limitations apply. See Owner's Manual for details. <sup>5</sup>Intelligent Cruise Control is not a collision avoidance system or warning device. Designed to use limited braking. Failure to apply the brakes could result in an accident.

## CHOOSE YOUR COLOR



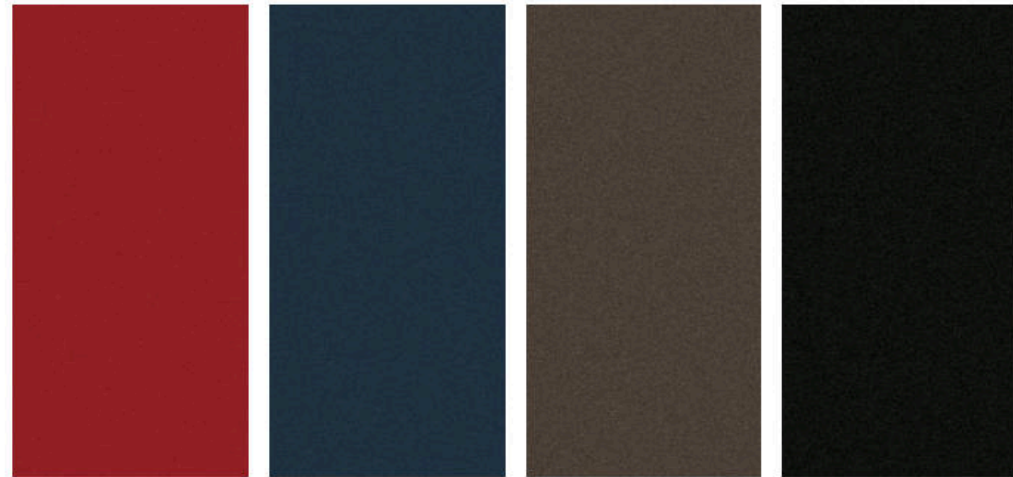
Pearl White<sup>1</sup> QAB

Brilliant Silver K23

Gun Metallic KAD

Pacific Sunset EAW

|                  | S | SV | SL | PLATINUM |
|------------------|---|----|----|----------|
| CASHMERE CLOTH   | ■ | ■  |    |          |
| GRAPHITE CLOTH   | ■ | ■  |    |          |
| CASHMERE LEATHER |   |    | ■  | ■        |
| GRAPHITE LEATHER |   |    | ■  | ■        |
| MOCHA LEATHER    |   |    | ■  | ■        |



Cayenne Red NAH

Arctic Blue Metallic RBG

Java Metallic CAJ

Magnetic Black G41

|                  | S | SV | SL | PLATINUM |
|------------------|---|----|----|----------|
| CASHMERE CLOTH   | ■ | ■  |    |          |
| GRAPHITE CLOTH   | ■ | ■  |    |          |
| CASHMERE LEATHER |   |    | ■  | ■        |
| GRAPHITE LEATHER |   |    | ■  | ■        |
| MOCHA LEATHER    |   |    | ■  | ■        |

■ Standard

<sup>1</sup>Extra cost option.

Nissan has taken care to ensure that the color swatches presented here are the closest possible representations of actual vehicle colors. Swatches may vary slightly due to the printing process and whether viewed in daylight, fluorescent or incandescent light. Please see the actual colors at your local Nissan dealer.

## CHOOSE YOUR INTERIOR



Nissan Murano® Platinum AWD shown in Cashmere Leather with optional equipment.



Cashmere Cloth  
S|SV

Graphite Cloth  
S|SV

Cashmere Leather  
SL|PLATINUM

Graphite Leather  
SL|PLATINUM

Mocha Leather  
SL|PLATINUM

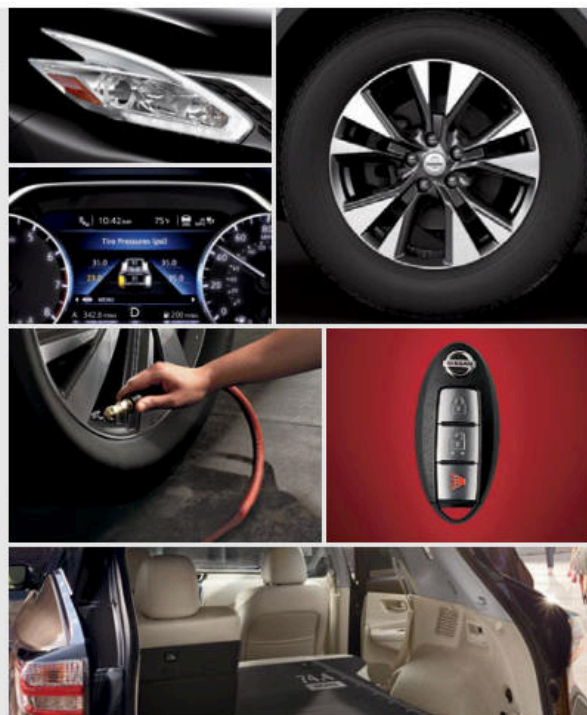
## CHOOSE YOUR TRIM LEVEL

**S**

- 260-hp, 3.5-liter V6 engine
- Xtronic CVT® transmission
- Intuitive All-Wheel Drive or Front-Wheel Drive
- Vehicle Dynamic Control (VDC)<sup>1</sup> with Traction Control System (TCS)
- 18" Machine-finished wheels
- Automatic on/off headlights
- LED Daytime Running Lights
- LED taillights
- Dual Zone Automatic Temperature Control (ATC) with in-cabin microfilter
- Nissan Intelligent Key® with Push Button Ignition
- Illuminated steering wheel-mounted controls
- 6-way manual driver's seat
- 60/40 Split fold-down rear seatbacks
- Cloth seat trim
- 7.0" Color Advanced Drive-Assist® Display<sup>2,3</sup>
- 7.0" Color Display Audio system
- Siri® Eyes Free<sup>4</sup>
- Hands-free text messaging assistant<sup>5</sup>
- Bluetooth® Hands-free Phone System and streaming audio<sup>6</sup>
- RearView Monitor<sup>7</sup>
- AM/FM/CD audio system
- Auxiliary audio input jack<sup>8</sup>
- Front USB port for iPod® interface<sup>8</sup>
- SiriusXM® Satellite Radio<sup>9</sup>
- 12-volt DC power outlets (3)
- Tire Pressure Monitoring System (TPMS) with Easy-Fill Tire Alert<sup>10,11</sup>
- Nissan Advanced Air Bag System<sup>12</sup>

### KEY AVAILABLE PACKAGE:

- Navigation Package



### SV INCLUDES S EQUIPMENT PLUS:

- Fog lights
- Black roof rails<sup>13</sup>
- NissanConnect<sup>SM</sup> with Navigation featuring Apple CarPlay™<sup>14,15</sup>
- 8.0" multi-touch control color monitor
- Voice Recognition for audio and navigation
- SiriusXM® Traffic and Travel Link<sup>9</sup>
- HD Radio<sup>8</sup>
- Remote Engine Start System with Intelligent Climate Control<sup>16</sup>
- 8-way power driver's seat
- Driver's seat power lumbar support
- 4-way power front-passenger's seat
- Leather-wrapped steering wheel and shift knob
- Rear USB connection port for iPod® interface and other compatible devices<sup>8</sup>

### KEY AVAILABLE PACKAGES:

- Premium Package
- Driver Assistance Package



### SL INCLUDES SV EQUIPMENT PLUS:

- Silver roof rails<sup>13</sup>
- Power heated outside mirrors with LED turn signal indicators
- Power liftgate
- Around View® Monitor<sup>7</sup>
- HomeLink® Universal Transceiver
- Driver Attention Alert (DAA)<sup>17</sup>
- Auto-dimming rearview mirror
- Driver's seat and outside mirrors position memory
- Leather-appointed seats
- Heated front seats
- Adjustable ambient interior lighting
- Premium Bose® Audio System with AM/FM/CD
- 11 speakers, including dual subwoofers
- Blind Spot Warning (BSW)<sup>18</sup>
- Rear Cross Traffic Alert (RCTA)<sup>19</sup>
- Moving Object Detection (MOD)<sup>20</sup>

### KEY AVAILABLE PACKAGE:

- Technology Package



### PLATINUM INCLUDES SL EQUIPMENT PLUS:

- 20" Machine-finished aluminum-alloy wheels
- LED headlights
- Climate-controlled front seats (heated and cooled)
- Heated rear seats
- Power-return rear seatbacks
- Heated steering wheel
- Power-tilt and power-telescoping steering column with memory position
- NissanConnect<sup>SM</sup> with Navigation and Services featuring Apple CarPlay™<sup>14,15</sup>

### KEY AVAILABLE PACKAGE:

- Technology Package



Images may show additional available equipment. <sup>1</sup>VDC, which should remain on when driving except when freeing the vehicle from mud or snow, cannot prevent accidents due to abrupt steering, carelessness, or dangerous driving techniques. <sup>2</sup>Driving is serious business and requires your full attention. If you have to use the feature while driving, exercise extreme caution at all times so full attention may be given to vehicle operation. <sup>3</sup>Information displayed is dependent on how vehicle is equipped. <sup>4</sup>Driving is serious business and requires your full attention. Only use feature when safe to do so. Compatible smartphone required. Availability of specific feature is dependent upon the phone's Bluetooth® support. Please refer to your phone Owner's Manual for details. Bluetooth® word mark and logos are owned by Bluetooth SIG, Inc. and any use of such marks by Nissan is under license. See [NissanUSA.com/bluetooth](http://NissanUSA.com/bluetooth) for details. Text rates and/or data usage may apply. Certain services, including Siri®, are provided by independent companies not within Nissan's control. Should service provider terminate/restrict service, service may be suspended or terminated without notice or liability to Nissan and/or its agents. Nissan not responsible for any equipment replacement or upgrades, or associated costs, that may be required for continued operation due to service changes. Siri® Eyes Free is a registered trademark of Apple, Inc. <sup>5</sup>Use the text messaging feature after stopping your vehicle in a safe location. If you have to use the feature while driving, exercise extreme caution at all times so full attention may be given to vehicle operation. Compatible smartphone required. Text rates and/or data usage may apply. <sup>6</sup>Availability of specific features is dependent upon the phone's Bluetooth® support. Please refer to your phone Owner's Manual for details. Bluetooth® word mark and logos are owned by Bluetooth SIG, Inc., and any use of such marks by Nissan is under license. See [NissanUSA.com/bluetooth](http://NissanUSA.com/bluetooth) for details. <sup>7</sup>Parking aid/convenience feature. Cannot completely eliminate blind spots. May not detect every object and does not warn of moving objects. Always check surroundings and turn to look behind you before moving vehicle. <sup>8</sup>Driving is serious business and requires your full attention. If you have to use the connected device while driving, exercise extreme caution at all times so full attention may be given to vehicle operation. iPod® is a registered trademark of Apple, Inc. All rights reserved. iPod® or other external device not included. <sup>9</sup>Required monthly subscriptions sold separately for each

available SiriusXM feature after trial period, and are continuous until you call SiriusXM to cancel. Installation costs, one-time activation fee, other fees and taxes will apply. Each SiriusXM feature availability is dependent upon vehicle model, trim level, packaging, and/or options, and may only be available in select markets. Satellite Radio U.S. service, NavWeather® service, and SiriusXM® Travel Link® services (if any of the foregoing features are equipped on vehicle) available only to those 18 or older in the 48 contiguous states and D.C. Fees and programming subject to change. Subscriptions governed by Customer Agreement available at [siriusxm.com](http://siriusxm.com). ©2016 Sirius XM Radio Inc. Sirius®, XM® and all related marks and logos are trademarks of Sirius XM Radio Inc. <sup>10</sup>TPMS is not a substitute for regular tire pressure checks. <sup>11</sup>Vehicle must be on for the Easy-Fill Tire Alert to operate. <sup>12</sup>Air bags are only a supplemental restraint system; always wear your seat belt. Even with the occupant-classification sensor, rear-facing child restraints should not be placed in the front-passenger's seat. All children 12 and under should ride in the rear seat properly secured in child restraints, booster seats, or seat belts according to their size. Air bags will only inflate in certain accidents; see your Owner's Manual for more details. <sup>13</sup>Cargo and load capacity limited by weight and distribution. Always secure all cargo. Heavy loading of the vehicle with cargo, especially on the roof, will affect the handling and stability of the vehicle. <sup>14</sup>Driving is serious business. Only use features when safe to do so. App availability is dependent upon vehicle model, trim level, packaging, and/or options. See [NissanUSA.com/connect](http://NissanUSA.com/connect) for complete app availability details. Never program while driving. GPS mapping may not be detailed in all areas or reflect current road status. Compatible smartphone required. Cellular network and GPS signals not available in all areas and/or at all times. Technology is evolving, and changes by independent companies are not within Nissan's control. Nissan is not responsible for associated costs that may be required for continued operation due to cellular network termination (including equipment upgrades, if available, or roaming charges on alternative networks) or other third party changes. Should a third party provider terminate/restrict service, service may be terminated without notice and with no liability to Nissan and its agents or affiliates. Subscription Agreement required and terms and conditions of Subscription Agreement apply. See [NissanUSA.com/connect](http://NissanUSA.com/connect) for details. Text rates and/or data usage may apply. <sup>15</sup>Driving is serious business and requires your full attention. Only use feature when safe to do so. Compatible iPhone® required. If you have to use the connected device while driving, exercise extreme caution at all times so full attention may be given to vehicle operation. Text rates and/or data usage may apply. Services/features are provided by independent companies not within Nissan's control. Should service provider terminate/restrict service/feature, service/feature may be suspended or terminated without notice or liability to Nissan and/or its agents. Nissan not responsible for any equipment replacement or upgrades, or associated costs, that may be required for continued operation due to service/feature changes. Apple's terms and privacy statements apply. Apple CarPlay™ is a trademark of Apple, Inc. iPhone® is a registered trademark of Apple, Inc. All rights reserved. External device not included. <sup>16</sup>State laws may apply; review local laws before using. <sup>17</sup>It is the driver's responsibility to remain alert at all times. DAA is only a warning to inform the driver of a potential lack of driver attention or drowsiness. It does not detect and provide an alert in every situation. See Owner's Manual for details. <sup>18</sup>Blind Spot Warning is not a substitute for proper lane change procedures. The system will not prevent contact with other vehicles or accidents. It may not detect every vehicle or object around you. <sup>19</sup>Not a substitute for proper backing procedures. May not detect all moving vehicles. Speed and other limitations apply. See Owner's Manual for details. <sup>20</sup>MOD cannot completely eliminate blind spots and may not detect every object. MOD operates at vehicle speeds below 5 mph. Always check surroundings and turn to look behind you before moving vehicle. Bose® is a registered trademark of The Bose Corporation. HomeLink® is a registered trademark of Gentex Corporation. iPod® is a registered trademark of Apple, Inc. All rights reserved. iPod® or other external device not included.

## CHOOSE YOUR PACKAGE



### NAVIGATION PACKAGE | S

- NissanConnect™ with Navigation featuring Apple CarPlay™<sup>1,2</sup>
- 8.0" multi-touch control color monitor



- Nissan Voice Recognition for audio and navigation<sup>3</sup>
- SiriusXM® Traffic and Travel Link<sup>6,4</sup>
- HD Radio<sup>8</sup>



- Rear passenger USB connection port for iPod® interface and other compatible devices<sup>5</sup>
- Apple CarPlay™<sup>2</sup>



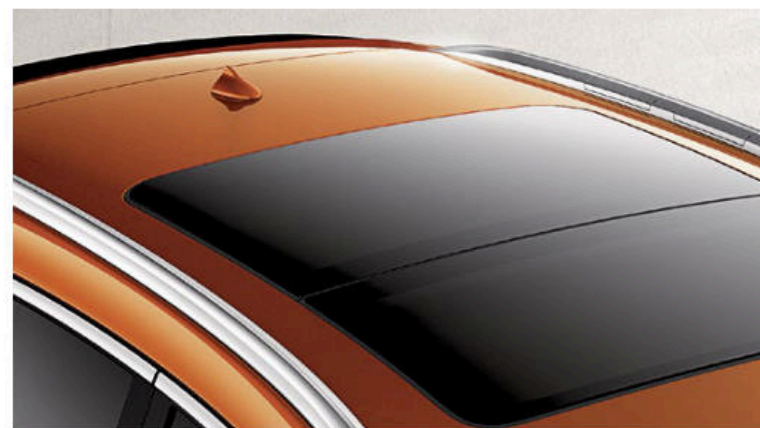
### DRIVER ASSISTANCE PACKAGE | SV (Requires SV Premium Package)

- Auto-dimming rearview mirror
- HomeLink® Universal Transceiver
- Driver Attention Alert (DAA)<sup>6</sup>
- Around View® Monitor (AVM)<sup>7</sup>
- Moving Object Detection (MOD)<sup>8</sup>
- Blind Spot Warning (BSW)<sup>9</sup>
- Rear Cross Traffic Alert (RCTA)<sup>10</sup>



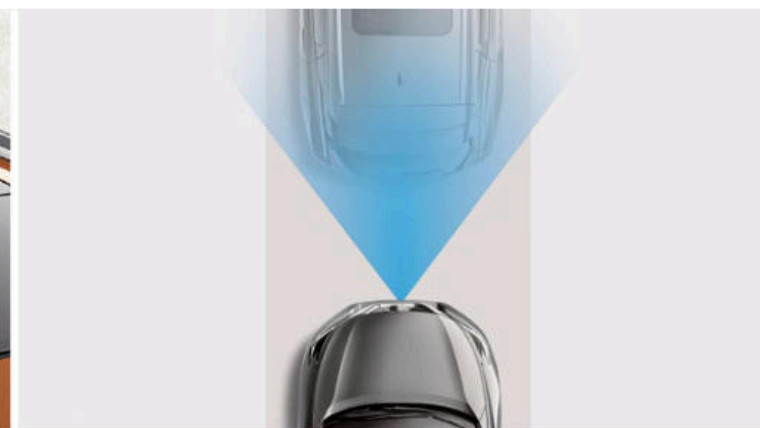
### PREMIUM PACKAGE | SV

- Power Panoramic Moonroof with one-touch open/close
- Premium Bose® Audio System with AM/FM/CD
- 11 Speakers, including dual subwoofers
- Heated front seats
- Power heated outside mirrors



### TECHNOLOGY PACKAGE | SL, PLATINUM

- Power Panoramic Moonroof with one-touch open/close
- Intelligent Cruise Control (ICC)<sup>11</sup>
- Forward Emergency Braking (FEB)<sup>12</sup>
- Predictive Forward Collision Warning (PFCW)<sup>13</sup>



Some images may show additional available equipment. <sup>1</sup>Driving is serious business. Only use features when safe to do so. App availability is dependent upon vehicle model, trim level, packaging, and/or options. See [NissanUSA.com/connect](http://NissanUSA.com/connect) for complete app availability details. Never program while driving. GPS mapping may not be detailed in all areas or reflect current road status. Compatible smartphone required. Cellular network and GPS signals not available in all areas and/or at all times. Technology is evolving, and changes by independent companies are not within Nissan's control. Nissan is not responsible for associated costs that may be required for continued operation due to cellular network termination (including equipment upgrades, if available, or roaming charges on alternative networks) or other third party changes. Should a third party provider terminate/restrict service, service may be terminated without notice and with no liability to Nissan and its agents or affiliates. Subscription Agreement required and terms and conditions of Subscription Agreement apply. See [NissanUSA.com/connect](http://NissanUSA.com/connect) for details. Text rates and/or data usage may apply. <sup>2</sup>Driving is serious business and requires your full attention. Only use feature when safe to do so. Compatible iPhone® required. If you have to use the connected device while driving, exercise extreme caution at all times so full attention may be given to vehicle operation. Text rates and/or data usage may apply. Services/features are provided by independent companies not within Nissan's control. Should service provider terminate/restrict service/feature, service/feature may be suspended or terminated without notice or liability to Nissan and/or its agents. Nissan not responsible for any equipment replacement or upgrades, or associated costs, that may be required for continued operation due to service/feature changes. Apple's terms and privacy statements apply. Apple CarPlay™ is a trademark of Apple, Inc. iPhone® is a registered trademark of Apple, Inc. All rights reserved. External device not included. <sup>3</sup>Never program while driving. GPS mapping may not be detailed in all areas or reflect current road status. <sup>4</sup>Required monthly subscriptions sold separately for each available SiriusXM feature after trial period, and are continuous until you call SiriusXM to cancel. Installation costs, one-time activation fee, other fees and taxes will apply. Each SiriusXM feature availability is dependent upon vehicle model, trim level, packaging, and/or options, and may only be available in select markets. Satellite Radio U.S. service, NavWeather® service, and SiriusXM® Travel Link® services

(if any of the foregoing features are equipped on vehicle) available only to those 18 or older in the 48 contiguous states and D.C. Fees and programming subject to change. Subscriptions governed by Customer Agreement available at [siriusxm.com](http://siriusxm.com). ©2016 Sirius XM Radio Inc. Sirius,® XM® and all related marks and logos are trademarks of Sirius XM Radio Inc. <sup>5</sup>Driving is serious business and requires your full attention. If you have to use the connected device while driving, exercise extreme caution at all times so full attention may be given to vehicle operation. <sup>6</sup>It is the driver's responsibility to remain alert at all times. DAA is only a warning to inform the driver of a potential lack of driver attention or drowsiness. It does not detect and provide an alert in every situation. See Owner's Manual for details. <sup>7</sup>Parking aid/convenience feature. Cannot completely eliminate blind spots. May not detect every object and does not warn of moving objects. Always check surroundings and turn to look behind you before moving vehicle. <sup>8</sup>MOD cannot completely eliminate blind spots and may not detect every object. MOD operates at vehicle speeds below 5 mph. Always check surroundings and turn to look behind you before moving vehicle. <sup>9</sup>Blind Spot Warning is not a substitute for proper lane change procedures. The system will not prevent contact with other vehicles or accidents. It may not detect every vehicle or object around you. <sup>10</sup>Not a substitute for proper backing procedures. May not detect all moving vehicles. Speed and other limitations apply. See Owner's Manual for details. <sup>11</sup>Intelligent Cruise Control is not a collision avoidance system or warning device. Designed to use limited braking. Failure to apply the brakes could result in an accident. <sup>12</sup>FEB cannot prevent accidents due to carelessness or dangerous driving techniques. It may not provide warning or braking in certain conditions. Speed and other limitations apply. <sup>13</sup>PFCW is intended to warn you before a collision occurs; it cannot prevent a collision. Speed and other limitations apply. See Owner's Manual for details. Bose® is a registered trademark of The Bose Corporation. HD Radio® is a registered trademark of iBiquity Digital Corporation. HomeLink® is a registered trademark of Gentex Corporation. iPod® and iPhone® are registered trademarks of Apple, Inc. All rights reserved. iPod®, iPhone® or other external device not included.

## CHOOSE YOUR ACCESSORIES



Every Genuine Nissan Accessory is custom-fit, custom-designed and durability-tested. Each one is also backed by Nissan's 3-year/36,000-mile (whichever occurs first) limited warranty (if installed by dealer at the time of purchase).<sup>1</sup> Plus, they can be financed when installed by the dealer at the time of purchase.

- A. Rear Cargo Cover and Cargo Net<sup>2</sup>**  
Keep it covered and keep it together. (Sold separately)
- B. Illuminated Kick Plates and Interior Accent Lighting**  
For a grand entrance every time. (Sold separately)
- C. Nissan 4G WiFi & Apps<sup>3</sup>**  
Connected passengers are happy passengers.
- D. Portable Cargo Organizer<sup>2</sup>**  
Everything in its right place.
- E. 18" Aluminum-alloy Wheels**  
Style at first glance.
- F. Remote Engine Start System<sup>4</sup>**  
Power in the palm of your hand.
- G. All-season Floor Mats and Carpeted Floor Mats**  
Neither rain, sleet or snow will muck up your Murano. (Sold separately)
- H. Cargo Area Protector**  
Preserve and protect your cargo – and your Murano.

### Additional Accessories:

- Blind Zone Mirrors<sup>5</sup>
- Carpeted Cargo Mat
- Hatch Tent
- Wireless Smartphone Charger
- Auto-dimming Rearview Mirror with HomeLink<sup>®</sup> and Compass
- And More

<sup>1</sup>Genuine Nissan Accessories are covered by Nissan's Limited Warranty on Genuine Nissan Replacement Parts, Genuine NISMO<sup>®</sup> S-Tune Parts, and Genuine Nissan Accessories for the longer of 12 months/12,000 miles (whichever occurs first) or the remaining period under the 3-year/36,000-mile (whichever occurs first) Nissan New Vehicle Limited Warranty. Terms and conditions apply. See Warranty Information Booklet for details. <sup>2</sup>Cargo and load capacity limited by weight and distribution. Always secure all cargo. Heavy loading of the vehicle with cargo, especially on the roof, will affect the handling and stability of the vehicle. <sup>3</sup>Driving is serious business and requires your full attention. Only use Nissan WiFi and Apps Services powered by Autonet Mobile when safe to do so. Only available on select models. See [Nissanwifi.com](http://Nissanwifi.com) for complete availability details. Never program while driving. GPS mapping may not

## GENUINE NISSAN ACCESSORIES

# EMBRACE THE ART OF ACCESSORIZING

For more information and to shop online for Murano<sup>®</sup> Genuine Nissan Accessories, go to [bit.ly/17murano-estore](http://bit.ly/17murano-estore)



To see Genuine Nissan Accessories in action, go to [bit.ly/17murano\\_gnvideos](http://bit.ly/17murano_gnvideos)

Nissan Murano<sup>®</sup> Platinum AWD shown in Pacific Sunset with 20" Aluminum-alloy Wheels, Roof Rail Crossbars,<sup>2</sup> Satin Chrome Rear Bumper Protector, Splash Guards, Tow Hitch Receiver, Hitch Ball Mount, and Hitch Ball.

be detailed in all areas or reflect current road status. Nissan WiFi and Apps Services requires compatible cellular network provided by Autonet, navigation map data, and GPS satellite signal receptions, the absence of which can limit or prevent the ability of the Nissan WiFi and Apps Services. Cellular network and GPS signals not available in all areas and/or at all times. Technology is evolving, and changes to cellular networks provided by independent companies or other third party changes that impact Nissan WiFi and Apps Services are not within Nissan's control. Should a third party or Autonet Mobile terminate or make changes that impact the service, service may be terminated without notice and Nissan shall have no liability. The Apps Services requires compatible smartphone or personal computer, not included with vehicle. Enrollment and Subscription Agreement is required to receive full suite of Nissan WiFi and Apps Services through Autonet Mobile. The 90 day trial period for Apps Services begins when the unit is registered with Autonet Mobile; subsequently the respective paid subscription for WiFi is at the then current rate to continue to receive respective services. Terms and conditions of Subscription Agreement then apply. Text rates and/or data usage may apply. <sup>4</sup>State laws may apply, review local laws before using. <sup>5</sup>Blind Zone Mirrors are not a substitute for proper lane change procedures. May not display every vehicle or object around you. HomeLink<sup>®</sup> is a registered trademark of Gentex Corporation.

## SPECIFICATIONS

| Engine   | S | SV | SL | Platinum |
|--|---|----|----|----------|
| VQ35DE – 3.5-liter DOHC 24-valve V6 engine                                 | ■ | ■  | ■  | ■        |
| – Horsepower – 260 hp @ 6,000 rpm  |   |    |    |          |
| – Torque – 240 lb-ft @ 4,400 rpm   |   |    |    |          |
| – Emissions – Tier 2-Bin 5 (Fed); LEV2-ULEV (CA)                           |   |    |    |          |
| Continuously Variable Valve Timing Control System (CVTCS) on intake valves | ■ | ■  | ■  | ■        |
| Variable induction system  | ■ | ■  | ■  | ■        |
| Nissan Direct Ignition System  | ■ | ■  | ■  | ■        |
| Double-tipped iridium spark plugs  | ■ | ■  | ■  | ■        |
| Electronic drive-by-wire throttle  | ■ | ■  | ■  | ■        |

| Drivetrain  | S | SV | SL | Platinum |
|---|---|----|----|----------|
| Front-wheel Drive (FWD)                           | ■ | ■  | ■  | ■        |
| Intuitive All-Wheel Drive (AWD)                   | □ | □  | □  | □        |
| Hill start assist                                 | ■ | ■  | ■  | ■        |
| Xtronic CVT® (Continuously Variable Transmission) | ■ | ■  | ■  | ■        |

| Brakes  | S | SV | SL | Platinum |
|---|---|----|----|----------|
| 4-wheel vented disc brakes                                      | ■ | ■  | ■  | ■        |
| 4-wheel Anti-Lock Braking System (ABS) – G-sensor on AWD models | ■ | ■  | ■  | ■        |
| Electronic Brake force Distribution (EBD)                       | ■ | ■  | ■  | ■        |
| Brake Assist (BA)   | ■ | ■  | ■  | ■        |

| Suspension/Chassis Bracing/Steering    | S | SV | SL | Platinum |
|--|---|----|----|----------|
| Independent strut front suspension     | ■ | ■  | ■  | ■        |
| Multi-link independent rear suspension | ■ | ■  | ■  | ■        |
| Front and rear stabilizer bars         | ■ | ■  | ■  | ■        |
| Vehicle-speed-sensitive power steering | ■ | ■  | ■  | ■        |

| Wheels/Tires  | S | SV | SL | Platinum |
|---|---|----|----|----------|
| 18" x 7.5" machine-finished split 5-spoke aluminum-alloy wheels | ■ | ■  | ■  | ■        |
| 20" x 7.5" machine-finished aluminum-alloy wheels               |   |    |    | ■        |
| P235/65R18 all-season tires                                     | ■ | ■  | ■  | ■        |
| P235/55R20 all-season tires                                     |   |    |    | ■        |

| Exterior Features  | S | SV | SL | Platinum |
|--|---|----|----|----------|
| LED Daytime Running Lights                                   | ■ | ■  | ■  | ■        |
| LED headlights   | ■ | ■  | ■  | ■        |
| Automatic on/off headlights                                  | ■ | ■  | ■  | ■        |
| Fog lights   | ■ | ■  | ■  | ■        |
| LED taillights   | ■ | ■  | ■  | ■        |
| Black roof rails   |   | ■  |    |          |
| Silver roof rails  |   |    | ■  | ■        |
| Power Panoramic Moonroof with one-touch open/close           |   | P  | T  | T        |
| Chrome door handles  | ■ | ■  | ■  | ■        |
| Power outside mirrors with LED turn signal indicators        | ■ | ■  | ■  | ■        |
| Power heated outside mirrors with LED turn signal indicators |   | P  | ■  | ■        |
| Active Grille Shutters                                       | ■ | ■  | ■  | ■        |
| Power liftgate   |   |    | ■  | ■        |

■ Standard    N Navigation Package    T Technology Package  
□ Optional    P Premium Package    D Driver Assistance Package

| Comfort/Convenience   | S | SV | SL | Platinum |
|---|---|----|----|----------|
| 7.0" Color Advanced Drive-Assist® Display   | ■ | ■  | ■  | ■        |
| 7.0" Color Display Audio System   | ■ | ■  | ■  | ■        |
| NissanConnect <sup>SM</sup> with Navigation featuring Apple CarPlay <sup>TM1,2</sup>              | N | ■  | ■  | ■        |
| NissanConnect <sup>SM</sup> with Navigation and Services featuring Apple CarPlay <sup>TM1,2</sup> |   |    |    | ■        |
| 8.0" multi-touch control color monitor  | N | ■  | ■  | ■        |
| Nissan Voice Recognition for audio and navigation   | N | ■  | ■  | ■        |
| Siri® Eyes Free <sup>3</sup>  | ■ | ■  | ■  | ■        |
| Apple CarPlay <sup>TM2</sup>  | N | ■  | ■  | ■        |
| SiriusXM® Traffic and Travel Link <sup>SM4</sup>  | N | ■  | ■  | ■        |
| Bluetooth® Hands-free Phone System <sup>5</sup>   | ■ | ■  | ■  | ■        |
| RearView Monitor  | ■ | ■  | ■  | ■        |
| Around View® Monitor  |   | D  | ■  | ■        |
| Dual Zone Automatic Temperature Control (ATC) with in-cabin microfilter                           | ■ | ■  | ■  | ■        |
| Rear passenger air conditioning vents   | ■ | ■  | ■  | ■        |
| HomeLink® Universal Transceiver   |   | D  | ■  | ■        |
| Driver's seat and outside mirrors position memory   |   |    | ■  | ■        |
| Steering-wheel position memory  |   |    | ■  | ■        |
| Steering wheel-mounted cruise control   | ■ | ■  | ■  | ■        |
| Intelligent Cruise Control (ICC)  |   |    | T  | T        |
| Driver Attention Alert (DAA)  |   | D  | ■  | ■        |
| Nissan Intelligent Key® with Push Button Ignition   | ■ | ■  | ■  | ■        |
| Remote Engine Start System with Intelligent Climate Control                                       | ■ | ■  | ■  | ■        |
| Remote front windows down   | ■ | ■  | ■  | ■        |
| Tilt and telescoping steering column  | ■ | ■  | ■  | ■        |
| Power-tilt and power-telescoping steering column  | ■ | ■  | ■  | ■        |
| Variable intermittent windshield wipers   | ■ | ■  | ■  | ■        |
| Vehicle speed-sensing variable intermittent windshield wipers                                     | ■ | ■  | ■  | ■        |
| Intermittent rear window wiper  | ■ | ■  | ■  | ■        |
| Auto-dimming rearview mirror  | ■ | D  | ■  | ■        |
| 12-volt DC power outlets (three)  | ■ | ■  | ■  | ■        |
| Adjustable ambient interior lighting  | ■ | ■  | ■  | ■        |
| 8 Cargo area tie-down hooks and rings   | ■ | ■  | ■  | ■        |

| Seating/Appointments   | S | SV | SL | Platinum |
|--|---|----|----|----------|
| 6-way manual driver's seat   | ■ | ■  | ■  | ■        |
| 8-way power driver's seat, with power lumbar support                   |   | ■  | ■  | ■        |
| 4-way manual front-passenger's seat                                    | ■ | ■  | ■  | ■        |
| 4-way power front-passenger's seat                                     |   | P  | ■  | ■        |
| Heated front seats   |   |    | ■  | ■        |
| Climate-controlled front seats (heated and cooled)                     |   |    | ■  | ■        |
| Heated rear seats  |   |    | ■  | ■        |
| 60/40 Split fold-down rear seatbacks with cargo area-accessible levers | ■ | ■  | ■  | ■        |
| Power return rear seatbacks  |   |    | ■  | ■        |
| Reclining rear seatbacks with center armrest                           | ■ | ■  | ■  | ■        |
| Cloth seat trim  | ■ | ■  | ■  | ■        |
| Leather-appointed seats  |   |    | ■  | ■        |
| Leather-wrapped steering wheel and shift knob                          |   | ■  | ■  | ■        |
| Heated steering wheel  |   |    | ■  | ■        |
| Jasper Pearlescent or Brushed Silver tone trim                         | ■ | ■  | ■  | ■        |

| Audio/Entertainment  | S | SV | SL | Platinum |
|--|---|----|----|----------|
| AM/FM/CD audio system with six speakers                                | ■ | ■  | ■  | ■        |
| Bose® audio system with AM/FM/CD                                       |   | P  | ■  | ■        |
| 11 speakers, including dual subwoofers                                 |   | P  | ■  | ■        |
| MP3/WMA CD playback capability   | ■ | ■  | ■  | ■        |
| Auxiliary audio input jack   | ■ | ■  | ■  | ■        |
| Front USB connection port for iPod® interface                          | ■ | ■  | ■  | ■        |
| Rear USB connection port for iPod® interface                           | N | ■  | ■  | ■        |
| SiriusXM® Satellite Radio with 3-month trial subscription <sup>4</sup> | ■ | ■  | ■  | ■        |
| HD Radio®  | N | ■  | ■  | ■        |
| Streaming audio via Bluetooth® wireless technology <sup>5</sup>        | ■ | ■  | ■  | ■        |

| Safety/Security   | S | SV | SL | Platinum |
|---|---|----|----|----------|
| Nissan Advanced Air Bag System with dual-stage supplemental front air bags with seat-belt and occupant-classification sensors                           | ■ | ■  | ■  | ■        |
| Driver and front-passenger seat-mounted side-impact supplemental air bags   | ■ | ■  | ■  | ■        |
| Roof-mounted curtain supplemental air bags with rollover sensor for side-impact and rollover head protection for front and rear-seat outboard occupants | ■ | ■  | ■  | ■        |
| Driver supplemental knee air bag  | ■ | ■  | ■  | ■        |
| Vehicle Dynamic Control (VDC) with Traction Control System (TCS)  | ■ | ■  | ■  | ■        |
| Active Brake Limited Slip (ABLS)  | ■ | ■  | ■  | ■        |
| Blind Spot Warning (BSW)  |   | D  | ■  | ■        |
| Rear Cross Traffic Alert (RCTA)   |   | D  | ■  | ■        |
| Moving Object Detection (MOD)   |   | D  | ■  | ■        |
| Predictive Forward Collision Warning (PFCW)   |   |    | T  | T        |
| Forward Emergency Braking (FEB)   |   |    | T  | T        |
| LATCH System (Lower Anchors and Tethers for CHildren)   | ■ | ■  | ■  | ■        |
| Tire Pressure Monitoring System (TPMS) with individual tire pressure display and Easy-Fill Tire Alert   | ■ | ■  | ■  | ■        |

<sup>1</sup>Driving is serious business. Only use NissanConnect<sup>SM</sup> Services powered by SiriusXM® when safe to do so. Late availability for some features. Services, including automatic crash notification and SOS, are dependent upon the telematics device being in operative condition, its ability to connect to a wireless network, compatible wireless network availability, navigation map data, and GPS satellite signal receptions, the absence of which can limit or prevent the ability to reach NissanConnect Services Customer Care or receive support. Never program while driving. GPS mapping may not be detailed in all areas or reflect current road status. You are responsible for using Remote Engine Start and Remote Horn features in accordance with any laws, rules or ordinances in effect in your vehicle's location. Remote Engine Start/Stop not available on all models. Cellular network not available in all areas and/or at all times. Cellular technology is evolving and changes to cellular networks provided by independent companies are not within Nissan's or Sirius XM Radio Inc.'s control. Neither Nissan nor Sirius XM are responsible for associated costs that may be required for continued operation due to cellular network termination (including equipment upgrades, if available, or roaming charges on alternative networks). Should cellular provider terminate/restrict services, service may be terminated without notice and with no liability to Nissan, Sirius XM and/or their respective agents or affiliates. Certain services require a PIN for activation. See [NissanUSA.com/connect](http://NissanUSA.com/connect) for details. Enrollment and Subscription Agreement required to receive full suite of services. Terms and conditions of Subscription Agreement apply. Six (6) month trial period begins on your date of vehicle purchase or lease of a new Nissan; subsequently a paid subscription is required at the then current rate to continue to receive services. Text rates and/or data usage may apply. <sup>2</sup>Driving is serious business and requires your full attention. Only use feature when safe to do so. Compatible iPhone® required. If you have to use the connected device while driving, exercise extreme caution at all times so full attention may be given to vehicle operation. Text rates and/or data usage may apply. Services/features are provided by independent companies not within Nissan's control. Should service provider terminate/restrict service/feature, service/feature may be suspended or terminated without notice or liability to Nissan and/or its agents. Nissan not responsible for any equipment replacement or upgrades, or associated costs, that may be required for continued operation due to service/feature changes. Apple's terms and privacy statements apply. Apple CarPlay™ is a trademark of Apple, Inc. iPhone® is a registered trademark of Apple, Inc. All rights reserved. External device not included. <sup>3</sup>Deleted when replaced by Apple CarPlay™. Driving is serious business and requires your full attention. Only use feature when safe to do so. Compatible smartphone required. Availability of specific feature is dependent upon the phone's Bluetooth® support. Please refer to your phone Owner's Manual for details. Bluetooth® word mark and logos are owned by Bluetooth SIG, Inc. and any use of such marks by Nissan is under license. See [NissanUSA.com/bluetooth](http://NissanUSA.com/bluetooth) for details. Text rates and/or data usage may apply. Certain

## DIMENSIONS/CAPACITIES/MPG

| Exterior Dimensions – Inches |            |
|------------------------------|------------|
| Wheelbase                    | 111.2      |
| Overall length               | 192.8      |
| Overall width/height         | 75.4 /67.8 |
| Track width (front/rear)     | 64.6/64.6  |

| Interior Dimensions (front/rear) – Inches |           |
|---|-----------|
| Head room                                 | 39.9/39.8 |
| Head room with Panoramic Moonroof         | 38.1/37.8 |
| Leg room                                  | 40.5/38.7 |
| Hip room                                  | 55.4/55.2 |
| Shoulder room                             | 59.5/58.8 |
| Step-in height                            | 15.8/15.1 |

| Capacities                                 |           |
|--|-----------|
| Seating capacity                           | 5         |
| Interior passenger volume (front/rear)     |           |
| – Without Moonroof                         | 55.7/52.4 |
| – With Panoramic Moonroof                  | 53.1/49.7 |
| Cargo volume with rear seat up (cu. ft.)   |           |
| – Without Moonroof/with Moonroof           | 32.1/31.1 |
| Cargo volume with rear seat down (cu. ft.) |           |
| – Without Moonroof/with Moonroof           | 67.0/65.0 |
| Fuel tank (gals.)                          | 19.0      |

| 2017 EPA Fuel Economy Estimates*   |          |          |
|--|----------|----------|
| City/Hwy/Combined MPG  | FWD      | AWD      |
| V6   | 21/28/24 | 21/28/24 |
| Actual mileage may vary with driving conditions – use for comparison only. |          |          |

services, including Siri®, are provided by independent companies not within Nissan's control. Should service provider terminate/restrict service, service may be suspended or terminated without notice or liability to Nissan and/or its agents. Nissan not responsible for any equipment replacement or upgrades, or associated costs, that may be required for continued operation due to service changes. Siri® Eyes Free is a registered trademark of Apple, Inc. <sup>4</sup>Required monthly subscriptions sold separately for each available SiriusXM feature after trial period, and are continuous until you call SiriusXM to cancel. Installation costs, one-time activation fee, other fees and taxes will apply. Each SiriusXM feature availability is dependent upon vehicle model, trim level, packaging, and/or options, and may only be available in select markets. Satellite Radio U.S. service, NavWeather® service, and SiriusXM® Travel Link® services (if any of the foregoing features are equipped on vehicle) available only to those 18 or older in the 48 contiguous states and D.C. Fees and programming subject to change. Subscriptions governed by Customer Agreement available at [siriusxm.com](http://siriusxm.com). ©2016 Sirius XM Radio Inc. Sirius® XM® and all related marks and logos are trademarks of Sirius XM Radio Inc. <sup>5</sup>Availability of specific features is dependent upon the phone's Bluetooth® support. Please refer to your phone Owner's Manual for details. Bluetooth® word mark and logos are owned by Bluetooth SIG, Inc., and any use of such marks by Nissan is under license. See [NissanUSA.com/bluetooth](http://NissanUSA.com/bluetooth) for details. <sup>6</sup>Targeted 2017 fuel economy estimates based on Nissan internal testing results, subject to EPA confirmation. Actual mileage may vary with driving conditions – use for comparison only. Bose® is a registered trademark of The Bose Corporation. HD Radio® is a registered trademark of iBiquity Digital Corporation. HomeLink® is a registered trademark of Gentex Corporation. iPod® is a registered trademark of Apple, Inc. All rights reserved. iPod® or other external device not included. This brochure is intended for general descriptive and informational purposes only. It is subject to change and does not constitute an offer, representation or warranty (express or implied) by Nissan North America, Inc. Interested parties should confirm the accuracy of any information in this brochure as it relates to a vehicle directly with Nissan North America, Inc., before relying on it to make a purchase decision. Nissan North America, Inc., reserves the right to make changes, at any time, without prior notice, in prices, colors, materials, equipment, specifications, and models and to discontinue models or equipment. Due to continuous product development and other pre- and post-production factors, actual vehicle, materials and specifications may vary from this brochure. Some vehicles shown with optional equipment. See the actual vehicle for complete accuracy. Availability and delivery times for particular models or equipment may vary. Specifications, options and accessories may differ in Hawaii, U.S. territories and other countries. For additional information on availability, options or accessories, see your Nissan dealer or contact Nissan North America, Inc. at [NissanUSA.com](http://NissanUSA.com), you'll find virtual product demonstrations, a way to "build your own Nissan," a dealer locator, and more information about key Nissan support services. Or if you'd prefer, call 1-800-NISSAN-3 for answers to specific questions about Murano® or any other Nissan vehicle. The Nissan names, logos, product names, feature names, and slogans are trademarks owned by or licensed to Nissan Motor Co. Ltd. and/or its U.S. American subsidiaries. Other trademarks and trade names are those of their respective owners. **Always wear your seat belt, and please don't drink and drive.** ©2016 Nissan North America, Inc. '17 Murano® 1719214-N-9/16-60M-CGI