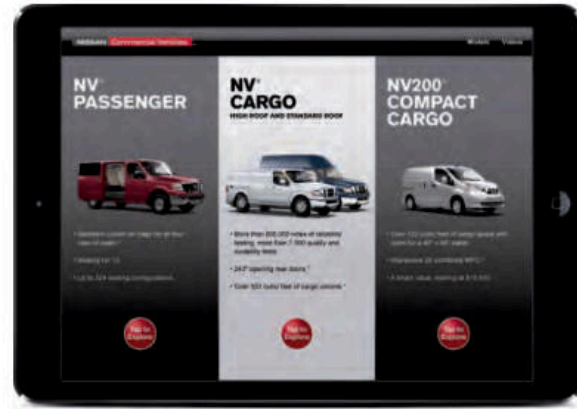


## DISCOVER EVEN MORE WITH THE NCV APP

Want to know more? The Nissan Commercial Vehicles App is your go-to resource for the entire NV® lineup, including NV® Cargo, NV® Passenger and NV200® Compact Cargo. Sections include an in-depth product presentation, video testimonials from actual NCV owners, full specifications and much more.



Available on tablets and mobile



Swipe through virtual pages to learn about features.



Simple touch-points reveal additional information.



View exterior color and rotate angles.

### Thumbs Off Your Phone While Driving!

Every year, too many people die because we can't put our phones down while driving. That's why Nissan is supporting the Red Thumb Movement as part of our ongoing commitment to help reduce fatalities on the road. So paint your thumbnail red as a reminder not to pick up your phone when you're behind the wheel. Find out more at [NissanUSA.com/redthumb](http://NissanUSA.com/redthumb)



Follow Nissan on: [YouTube](https://www.youtube.com)

**Nissan. Innovation that excites.®**  
visit [NissanCommercialVehicles.com](http://NissanCommercialVehicles.com)

The App Store® is a registered trademark of Apple, Inc. Google® Play and YouTube® are registered trademarks of Google Inc. This brochure is intended for general descriptive and informational purposes only. It is subject to change and does not constitute an offer, representation or warranty (express or implied) by Nissan North America, Inc. Interested parties should confirm the accuracy of any information in this brochure as it relates to a vehicle directly with Nissan North America, Inc., before relying on it to make a purchase decision. Nissan North America, Inc., reserves the right to make changes, at any time, without prior notice, in prices, colors, materials, equipment, specifications, and models and to discontinue models or equipment. Due to continuous product development and other pre- and post-production factors, actual vehicle, materials and specifications may vary from this brochure. Some vehicles shown with optional equipment. See the actual vehicle for complete accuracy. Availability and delivery times for particular models or equipment may vary. Specifications, options and accessories may differ in Hawaii, U.S. territories and other countries. For additional information on availability, options or accessories, see your Nissan dealer or contact Nissan North America, Inc. At [NissanUSA.com](http://NissanUSA.com), you'll find virtual product demonstrations, a way to "build your own Nissan," a dealer locator, and more information about key Nissan support services. Or if you'd prefer, call 1-800-NISSAN-3 for answers to specific questions about NV® Cargo or any other Nissan vehicle. The Nissan names, logos, product names, feature names, and slogans are trademarks owned by or licensed to Nissan Motor Co. Ltd. and/or its North American subsidiaries. Other trademarks and trade names are those of their respective owners. **Always wear your seat belt, and please don't drink and drive.** ©2015 Nissan North America, Inc. MY16NVCargoSG-091615

PRINTED IN USA.



Innovation that excites

2016  
**NV® CARGO**



**NISSAN** Commercial Vehicles®



Innovation that excites



It's a Nissan Commercial Dealer that specializes in selling and servicing the entire NV® lineup. Only Business Certified Dealers offer exclusive commercial incentive packages, while providing dedicated Commercial Vehicles Account Managers and Priority Service. We offer complimentary upfit packages as part of our exclusive commercial incentive program. We also offer Commercial Lending Programs, and much more.

**Key Benefits from Business Certified Dealer:**

- Priority Service with Next Available Bay and Next Available Technician
- Special Commercial Lending programs, including available lines of credit
- Dedicated Commercial Vehicles Account Manager to handle commercial customer transactions at your location
- Fleet Pricing available for qualified accounts
- 24-hour towing with Roadside Assistance, including Trip Interruption reimbursement on select models<sup>1</sup>
- A commercial sales and service experience that fits your schedule
- Complimentary shuttle service
- Available Demonstrator Vehicles
- Mailings with special offers and incentives
- Access to Commercial Vehicles inventory
- Commercial service advisors to get you on the road quickly and minimize downtime
- Qualifying customers will receive support from the Commercial Upfit Incentive Program, and will be able to choose from complimentary options: cargo management equipment, graphics packages, or cash back – offers vary by model.

<sup>1</sup>Roadside Assistance and Trip Interruption available during the first four years after initial new vehicle delivery. Restrictions apply. See Owner's Manual for details.



OVER **800000** MILES AND 7,000 QUALITY AND DURABILITY TESTS.

**ONE UNSHAKABLE COMMITMENT.** Fanatical? Maybe. But when it comes to making the toughest commercial vans you can buy, we go the extra distance for you, and it's no Sunday drive. We simulate years of corrosion where we soak a vehicle with salt, bake it, and pound it around a test track. We wreak havoc with suspension and body components by driving through potholes, dips, and over 4 x 4 beams. Special chambers crank up the heat to 140° and humidity to 95% to break down seals and age interiors.

We even have machines that can simulate nearly any road in the world, and we run our vehicles on them nonstop for 12 hours, 24 hours, or even more. Do we really need to go to such extremes, just to make a Nissan Commercial Van the best you've ever owned? Yes, because every day, you depend on it to do your job. That's the motivation for us to do ours.



HEAT CHAMBER



SPLASH COURSE



BELGIUM BLOCK



SALT SPRAY TUNNEL

America's Best Commercial Van Warranty  
**5 YEARS/100,000 MILES<sup>2</sup>**  
 BUMPER-TO-BUMPER LIMITED WARRANTY

Going above and beyond is the Nissan way. After passing all of the brutal quality and durability testing we can think of, we're sure you'll have a van you can count on. To prove our confidence and our commitment, we are pleased to introduce America's Best Commercial Van Warranty. A bumper-to-bumper limited warranty for 5 years or 100,000 miles, which ever comes first. And that means we've got your back, so you can keep moving forward. For more details of the warranty, please go to [NissanCommercialVehicles.com](http://NissanCommercialVehicles.com) or ask your Nissan Business Certified Dealer.<sup>2</sup>

<sup>2</sup>Claim based on years/mileage (whichever occurs first) covered under the 2016 New Vehicle Limited Warranty basic coverage. NV200® Taxi is covered under a separate limited warranty with a different level of coverage. Comparison based on Ward's Light Vehicle Segmentation: 2016 Nissan Cargo, Passenger v. 2015 Large Van Class; 2015 Nissan NV200® v. 2015 Small Van Class. Comparison based on publicly available information on manufacturers' website. Nissan's New Vehicle Limited Warranty basic coverage excludes tires, powertrain coverage, corrosion coverage and federal and California emission performance and defect coverage (applicable coverage is provided under other separate warranties). The powertrain coverage is 5 years or 100,000 miles (whichever occurs first). Other general exclusions and terms and conditions also apply. For complete information concerning coverage, conditions and exclusions, see your Nissan dealer and read the actual New Vehicle Limited Warranty booklet. Warranty claim is current at time of printing.

## NISSAN NV® CARGO

# LOADED WITH SPACE, INNOVATION AND AN ALL-AMERICAN WORK ETHIC.



Whether you run a single van operation or manage an entire fleet, it's important to have the right vehicle for the job. And with the U.S.-built 2016 NV® Cargo High Roof and NV® Cargo Standard Roof, you've got a great range to choose from. These are the kinds of vehicles you need to do business today: smarter, tougher, and more comfortable, with state-of-the-art technology and safety. NV® Cargo even makes it easy to fit the special needs of your business with integrated reinforced cargo-mounting points that help ensure easy and durable upfitting, and a smart flat-wall interior design that maximizes floor space and opens up room at the top of cargo containment systems.

### AVAILABLE FEATURES:



Under-seat driver's storage is ideal for loose items like invoices.<sup>1</sup>



The flexible center console has room for a laptop and hanging files and folders.<sup>1</sup>



The rear door storage compartment helps keep key items within easy reach.<sup>1</sup>



12-V and 120-V power outlets in the center console help keep you charged up.<sup>1</sup>



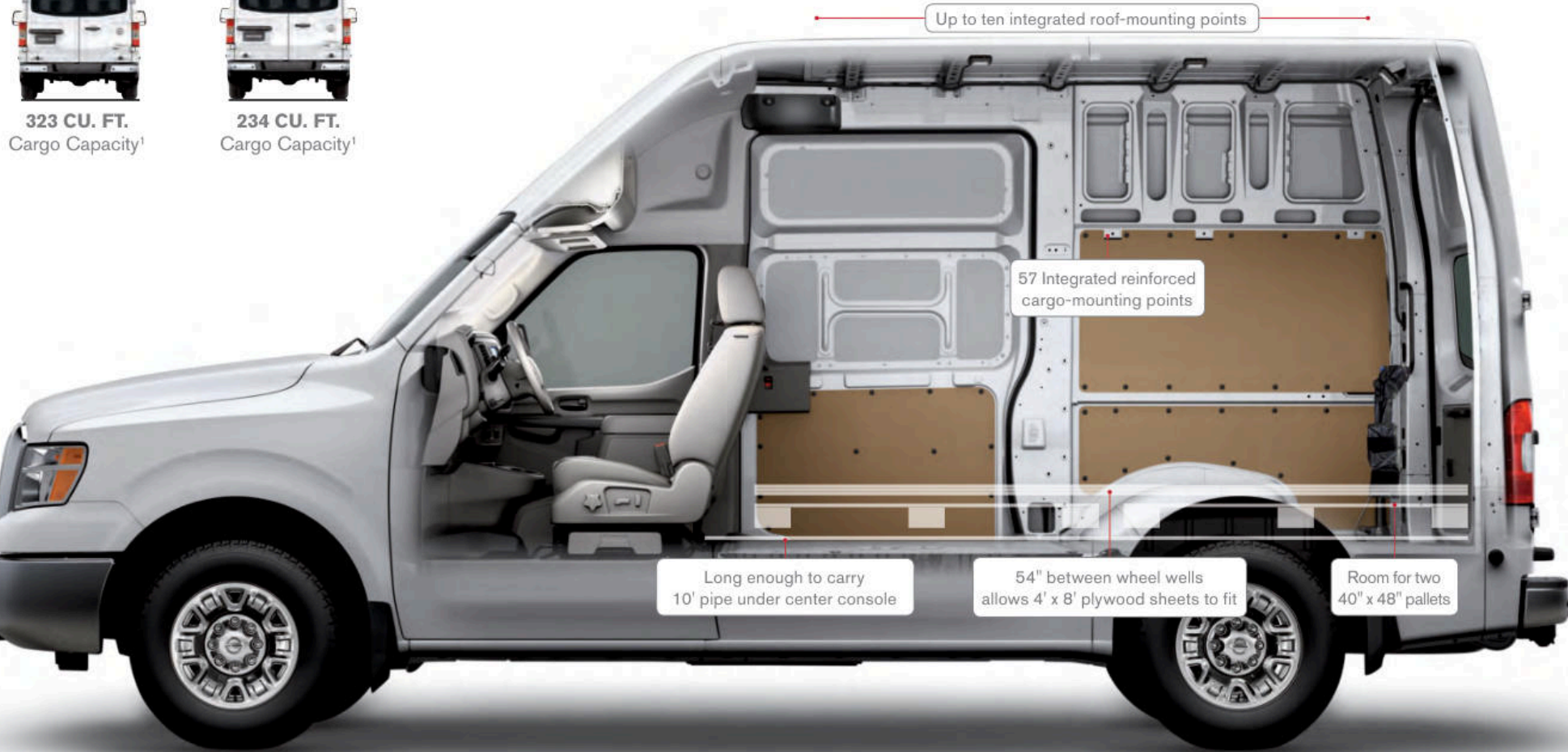
The available RearView Monitor helps you get close to loading zones and negotiate tight parking spaces.<sup>2</sup>



323 CU. FT.  
Cargo Capacity<sup>1</sup>



234 CU. FT.  
Cargo Capacity<sup>1</sup>



<sup>1</sup>Cargo shown for display purposes only. Cargo and load capacity limited by weight and distribution. Always secure all cargo. Heavy loading of the vehicle with cargo, especially on the roof, will affect the handling and stability of the vehicle. Do not place sharp objects or store objects in the front of the overhead compartment that exceed height of shelving lip. See Owner's Manual for details. <sup>2</sup>Parking aid/convenience feature. Cannot completely eliminate blind spots. May not detect every object and does not warn of moving objects. Always check surroundings and turn to look behind you before moving vehicle.

## CHOOSE YOUR ACCESSORIES



### WORK SMARTER AND HARDER.

Every Genuine Nissan Accessory is custom-fit, custom-designed and durability-tested. Each one is backed by Nissan's 5-year/100,000-mile (whichever occurs first) limited warranty (if installed by dealer at the time of purchase),<sup>1</sup> and can be financed when installed by dealer at time of purchase.

#### A. Interior Wall Panels

Help preserve and protect your vehicle's interior.

#### B. Shelving Support Brackets

Help reinforce walls for heavily loaded shelves.

#### C. Telescoping Tow Mirrors<sup>2</sup>

Telescoping mirrors slide outward for enhanced visibility.

#### D. Weight-distributing Hitch Ball Mount, Class IV<sup>2</sup>

Makes for a safer ride when towing heavy loads.

#### E. In-mirror RearView Monitor<sup>3</sup>

Helps you see what is directly behind the vehicle.

#### F. Auto-dimming Rearview Mirror

Don't let bright headlights get in your way.

#### G. All-season Floor Mats

Because the weather outside isn't always delightful.

#### H. Emergency Road Kit

Everything you need for life's little uncertainties.

#### Additional Accessories:

- Nissan Fleet Tracker<sup>4</sup>
- Nissan VTRS (Vehicle Tracking and Recovery System)<sup>5</sup>
- Hood Protector
- Side-window Deflectors
- Tow Hooks<sup>2</sup>
- Towing Accessories<sup>2</sup>
- Body Side Moldings
- Splash Guards
- And More

<sup>1</sup>Genuine Nissan Accessories are covered by Nissan's Limited Warranty on Genuine Nissan Replacement Parts, Genuine NISMO<sup>®</sup> S-Tune Parts, and Genuine Nissan Accessories for the longer of 12 months/12,000 miles (whichever occurs first) or the remaining period under the 5-year/100,000-mile (whichever occurs first) Nissan New Vehicle Limited Warranty. Terms and conditions apply. See Warranty Information Booklet for details. <sup>2</sup>See Nissan Towing Guide and Owner's Manual for proper use. <sup>3</sup>Parking aid/convenience feature. Cannot completely eliminate blind spots. May not detect every object and does not warn of moving objects. Always check surroundings and turn to look behind you before moving vehicle. <sup>4</sup>Basic plan is complimentary for first three years starting from accessory purchase date; subsequently a paid subscription is required at the then current rate. Terms, conditions, and limitation apply. <sup>5</sup>VTRS requires owner registration, a constant 12-volt source, and cellular and GPS satellite availability to function properly.

# GENUINE NISSAN ACCESSORIES.

For more information and to shop online for NV<sup>®</sup> Cargo Genuine Nissan Accessories, go to [bit.ly/16nvcargo-estore](http://bit.ly/16nvcargo-estore)

To see short videos on Genuine Nissan Accessories in action, go to [bit.ly/16nvcargo-gnavideo](http://bit.ly/16nvcargo-gnavideo)



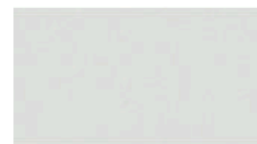
Nissan NV3500<sup>®</sup> HD SL Cargo Standard Roof shown in Brilliant Silver with Hood Protector, Telescoping Tow Mirrors, Tow Hooks, Side-window Deflectors, Body Side Moldings, and Splash Guards.

## TRIM BUILD

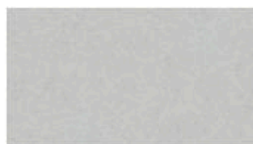
<b>NV1500® S</b>	<b>NV2500® HD S</b> INCLUDES:	<b>NV3500® HD S</b> INCLUDES:
<ul style="list-style-type: none"> <li>4.0-liter DOHC V6 engine</li> <li>5-speed automatic transmission</li> <li>14" Brakes front/rear</li> <li>17" Steel wheels with 245/70R17 tires</li> <li>Water-repellent cloth seats with vinyl wear patches on bolsters</li> <li>Six floor-mounted D-rings in cargo area</li> <li>57 Integrated reinforced cargo-mounting points</li> <li>Ten exterior roof rack-mounting points</li> <li>Pre-wiring for electrical upfitting</li> <li>AM/FM/CD audio system</li> <li>Driver's and passenger's seat-mounted side-impact supplemental air bags</li> <li>Roof-mounted curtain side-impact air bags with rollover sensor for front outboard occupant head protection</li> <li>Vehicle Dynamic Control (VDC)</li> </ul>	<ul style="list-style-type: none"> <li>NV1500® S contents</li> <li>Payload increase over NV1500® S<sup>1</sup></li> <li>Dual power outside mirrors</li> <li>Driver's under-seat storage tray</li> <li>Two additional cargo area work lights</li> <li>Rear door storage pocket</li> <li>HD badging</li> <li>Optional High Roof model with full-width overhead console and eight exterior roof rack-mounting points</li> <li>Optional 5.6-liter DOHC V8 engine with standard towing equipment<sup>2</sup></li> </ul>	<ul style="list-style-type: none"> <li>NV2500® HD S contents</li> <li>Payload increase over 2500 HD S<sup>1</sup></li> <li>5.6-liter DOHC V8 engine</li> <li>Final gear ratio of 3.54:1</li> <li>245/75R17 all-season tires<sup>1</sup></li> <li>Power heated extendable tow mirrors</li> <li>Two front tow hooks</li> <li>7-pin connector and brake controller pre-wiring</li> <li>Class IV tow hitch receiver<sup>2</sup></li> <li>HD battery</li> </ul>
<b>NV1500® SV</b> INCLUDES:	<b>NV2500® HD SV</b> INCLUDES:	<b>NV3500® HD SV</b> INCLUDES:
<ul style="list-style-type: none"> <li>NV1500® S contents</li> <li>17" Styled steel wheels</li> <li>Rear cargo floor protector</li> <li>Hardboard interior cargo panels</li> <li>Dual power outside mirrors</li> <li>Power windows and door locks</li> <li>Five assist grips (four on S models)</li> <li>Steering wheel-mounted controls</li> <li>MP3/WMA CD playback capability</li> <li>Four speakers</li> <li>Rear Sonar System</li> </ul>	<ul style="list-style-type: none"> <li>NV1500® SV and NV2500® HD S contents</li> <li>Multi-functional lockable center console with 12-volt and 120-volt outlets</li> <li>Additional 120-volt power outlet in cargo area</li> <li>Two cup holders</li> <li>Delete driver's and passenger's armrests</li> </ul>	<ul style="list-style-type: none"> <li>NV1500® SV and NV3500® HD S contents</li> <li>Multi-functional lockable center console with 12-volt and 120-volt outlets</li> <li>Additional 120-volt power outlet in cargo area</li> <li>Two cup holders</li> <li>Delete driver's and passenger's armrests</li> </ul>
<b>NV1500® SL</b> INCLUDES:	<b>NV2500® HD SL</b> INCLUDES:	<b>NV3500® HD SL</b> INCLUDES:
<ul style="list-style-type: none"> <li>NV1500® S contents</li> <li>17" Styled steel wheels</li> <li>Rear cargo floor protector</li> <li>Hardboard interior cargo panels</li> <li>Dual power outside mirrors</li> <li>Power windows and door locks</li> <li>Five assist grips (four on S models)</li> <li>Steering wheel-mounted controls</li> <li>MP3/WMA CD playback capability</li> <li>Four speakers</li> <li>Rear Sonar System</li> </ul>	<ul style="list-style-type: none"> <li>NV2500® HD SV contents</li> <li>Chrome grille, bumpers, and door handles</li> <li>Chrome outside mirrors (V8)</li> <li>17" x 7.5" chrome-clad wheels</li> <li>8-way power adjustable driver's seat with manual lumbar</li> <li>Vehicle Security System with alarm</li> <li>Nissan Vehicle Immobilizer System</li> </ul>	<ul style="list-style-type: none"> <li>NV3500® HD SV contents</li> <li>Chrome grille, bumpers, and door handles</li> <li>Chrome outside mirrors</li> <li>17" x 7.5" chrome-clad wheels</li> <li>8-way power adjustable driver's seat with manual lumbar</li> <li>Vehicle Security System with alarm</li> <li>Nissan Vehicle Immobilizer System</li> </ul>

**KEY AVAILABLE PACKAGES:** Technology Package (SV, SL), Power Basic Package (S), Vinyl Seat Package (S), Rear Door Glass Package, Sliding Door Glass Package

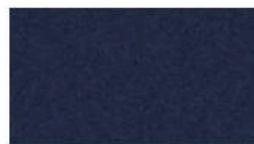
## PAINT SELECTIONS



Glacier White QAK



Brilliant Silver K23



Arctic Blue Metallic RBG



Cayenne Red NAH



Super Black KH3

## DIMENSIONS/CAPACITIES/WEIGHTS

Exterior Dimensions – Inches		
	Standard Roof	High Roof
Wheelbase	146.1	146.1
Overall length	240.6	240.6
Overall width (without mirrors)	79.9	79.9
Overall width (with mirrors)	99.5	99.5
Overall width (with tow mirrors)	102.8	102.8
Overall height	83.9 (84.9 for 3500)	105.0 (106.0 for 3500)
Track width (front)	68.7	68.7
Track width (rear)	68.9	68.9
Sliding side door width	41.7	41.7
Rear door opening width	61.6	61.6
Rear door opening height	49.8	71.5
Step-in height (front)	18.0 (18.7 for 3500)	18.0 (18.7 for 3500)
Step-in height (slide door)	19.4 (20.2 for 3500)	19.4 (20.2 for 3500)
Step-in height (rear)	19.8 (20.9 for 3500)	19.8 (20.9 for 3500)
Cargo area liftover height	28.5	28.5
Angle of approach (degrees)	17.5°	17.5°
Angle of departure (degrees)	17.4°	17.4°
Turning diameter (ft.)	45.2	45.2

Interior Dimensions – Inches		
	Standard Roof	High Roof
Head room	42.8	63.6
Leg room	42.0	42.0
Hip room	60.6	60.6
Shoulder room	65.7	65.7

Cargo Dimensions – Inches		
	Standard Roof	High Roof
Cargo volume (cu. ft.)	234.1	323.1
EPA interior passenger volume (cu. ft.)	68.3	101.5
Total interior volume (cu. ft.)	299.7	420.5
Maximum cargo length	120.0	120.0
Maximum cargo length behind center console at vehicle center	121.9	121.9
Maximum cargo length without center console at vehicle center	150.4	150.4
Maximum cargo width	70.2	70.2
Cargo width at wheelhouse floor	54.3	54.3
Maximum cargo height	55.8	76.9

Capacities			
	Standard Roof		High Roof
Roof load capacity (lbs.)	500		300
Seating capacity	2		2
Fuel tank (gals.)	28.0		28.0
Engine oil (qts.)	5.4 (V6)	6.5 (V8)	5.4 (V6) 6.5 (V8)

Maximum Payload <sup>2</sup> – Lbs.								
	1500 S	1500 SV	2500 S	2500 SV	2500 SL	3500 S	3500 SV	3500 SL
Std. Roof (V6)	2,752	2,645	3,301	3,159	3,144	–	–	–
Std. Roof (V8)	–	–	3,144	3,002	2,987	3,937	3,795	3,780
High Roof (V6)	–	–	3,138	2,996	2,981	–	–	–
High Roof (V8)	–	–	2,991	2,849	2,834	3,783	3,641	3,626

Maximum Towing – Lbs.	
With standard bumper towing	2,000 <sup>3</sup>
With tow hitch receiver	7,000 <sup>4</sup>
With tow hitch receiver (V8)	9,500 <sup>3</sup>

Weights – Lbs.								
GVWR	1500 S	1500 SV	2500 S	2500 SV	2500 SL	3500 S	3500 SV	3500 SL
	8,550	8,550	9,100	9,100	9,100	9,900	9,900	9,900

Curb Weights								
Std. Roof (V6)	5,797	5,904	5,799	5,941	5,956	–	–	–
Std. Roof (V8)	–	–	5,956	6,098	6,113	5,964	6,106	6,121
High Roof (V6)	–	–	5,963	6,105	6,120	–	–	–
High Roof (V8)	–	–	6,110	6,252	6,267	6,118	6,260	6,275

<sup>1</sup>When using load index 94 (1477 lb) tires. Use of other tires may reduce payload capacity. <sup>2</sup>Payload rating represents maximum allowable weight of people and cargo, and can be reduced by the weight of optional equipment. <sup>3</sup>See Nissan Towing Guide and Owner's Manual for proper use. <sup>4</sup>With available tow hitch accessory for V6 and V8 models. See Nissan Towing Guide and Owner's Manual for proper use.

## AVAILABLE GRAPHICS PACKAGES AND UPFITS



Your commercial vehicle is your calling card. Why not make it work as hard as you do? Choose between a Complimentary NCV Graphics Package or one of several other packages offered at a significant discount. Ask your Nissan Business Certified Dealer for details.



To get the most out of your NV® Cargo, you have a choice of Complimentary NV® Cargo Management Packages, all by Adrian Steel. There are also several vocational-specific upfit packages offered at a discount. Ask your Nissan Business Certified Dealer for details.

## SPECIFICATIONS

Engine	1500			2500			3500		
	S	SV	SL	S	SV	SL	S	SV	SL
VQ40DE – 4.0-liter DOHC 24-valve V6 engine									
– Horsepower – 261 hp @ 5,600 rpm									
– Torque – 281 lb-ft @ 4,000 rpm									
VK56DE – Endurance 5.6-liter DOHC									
– 32-valve V8 engine									
– Horsepower – 317 hp @ 5,200 rpm									
– Torque – 385 lb-ft @ 3,400 rpm									
Emissions – 50-state emissions									
Continuously Variable Valve Timing Control System (CVTCS)									
Nissan Direct Ignition System									
Electronic drive-by-wire throttle									
Alternator (130 amps)									
Heavy-duty battery									

Drivetrain	1500	2500	3500
5-speed automatic transmission			
Final gear ratio – V6 (3.36:1)			
Final gear ratio – V8 (3.54:1)			

Brakes	1500	2500	3500
14.2" Front vented disc brakes			
14.4" Rear vented disc brakes			
4-wheel Anti-lock Braking System (ABS)			
Electronic Brake force Distribution (EBD)			
Brake Assist			

Suspension/Steering	1500	2500	3500
Front independent double-wishbone suspension			
Multi-leaf rear suspension with solid axle			
Front and rear stabilizer bars			
Engine-speed-sensitive hydraulic recirculating ball steering			
Full-length, fully boxed ladder frame			

Wheels/Tires	1500	2500	3500
17" x 7.5" steel wheels			
17" x 7.5" styled steel wheels			
17" x 7.5" chrome-clad wheels			
LT245/70R17 all-season tires			
LT245/75R17 all-season tires			

Exterior Features	1500	2500	3500
Standard Roof			
High Roof			
Black grille, bumpers and door handles			
Black outside mirrors			
Chrome grille, bumpers and door handles			
Power heated chrome extendable tow mirrors			
Dual power outside mirrors			
Ten roof rack-mounting points (Standard Roof)			
Eight roof rack-mounting points (High Roof)			

Exterior Features (continued)	1500	2500	3500
50/50 Split rear cargo doors with opening locking feature			
Magnetic door locks (to secure open rear doors)			
243° Maximum opening range for rear cargo doors			
Sliding side door on passenger side			
Sliding side door window with privacy glass			
2nd- and 3rd-row windows with privacy glass and left side pop-out function (High Roof)			
Rear window defroster			
Halogen headlights			
Two front tow hooks			
Rear Sonar System			
Rear privacy glass			
7-pin connector and brake controller pre-wiring			
Class IV tow hitch receiver <sup>1</sup>			

Comfort/Convenience	1500	2500	3500
NissanConnect <sup>SM</sup> with Navigation and Mobile Apps, including 5.8" color touch-screen monitor <sup>2</sup>			
Nissan Voice Recognition for audio and navigation			
SiriusXM <sup>®</sup> Traffic and Travel Link <sup>®3</sup>			
Hands-free text messaging assistant <sup>4</sup>			
Bluetooth <sup>®</sup> Hands-free Phone System <sup>5</sup>			
Air conditioning			
36 Integrated reinforced cargo-mounting points for custom shelving			
11 Integrated reinforced cargo-mounting points for bulkhead partition			
Ten integrated reinforced mounting points in ceiling for interior ladder rack installation			
Six floor-mounted D-rings in cargo area			
Pre-wiring for electrical upfitting			
Three cargo area work lights (1 on 1500)			
Vertical sidewall design			
Hardboard interior cargo panels			
Interior rearview mirror			
Rear cargo floor protector			
Five assist grips (four on S models)			
Remote keyless entry			
Power windows with driver's one-touch auto-down with auto-reverse			
Power door locks with auto-locking feature			
Cruise control with steering wheel-mounted controls			
Tilt steering column			
Variable intermittent windshield wipers			
Multi-functional trip computer with maintenance intervals			
Full-width overhead cabin storage shelving with map lights (High Roof)			
Multi-functional lockable center console with file and laptop computer storage with built-in clipboard holder			
Driver's under-seat slide-out storage tray			

Comfort/Convenience (continued)	1500	2500	3500
Front-door map pockets			
Six cup holders			
One 12-volt DC power outlet			
Two 12-volt DC power outlets			
Two 120-volt power outlets			
Rear door storage			
RearView Monitor			

Seating/Appointments	1500	2500	3500
Gray vinyl seats			
Gray cloth seats with reinforced side bolster wear patches on inner and outer bolsters			
Water-repellent seating surfaces			
Seat armrests			
4-way manual driver's seat			
4-way manual passenger's seat			
8-way power adjustable driver's seat with manual lumbar			
Fold-down passenger's seat with seatback tray table			

Audio/Entertainment	1500	2500	3500
AM/FM/CD audio system			
Radio Data System (RDS)			
MP3/WMA CD playback capability			
Auxiliary audio input jack			
USB connection port for iPod <sup>®</sup> interface and other compatible devices <sup>6</sup>			
Steering wheel-mounted audio controls			
Two speakers			
Four speakers			
SiriusXM <sup>®</sup> Satellite Radio <sup>7</sup>			
Streaming audio via Bluetooth <sup>®</sup> wireless technology <sup>8</sup>			

Safety/Security	1500	2500	3500
Driver and passenger dual-stage supplemental front air bags with seat-belt sensors			
Driver's and passenger's seat-mounted side-impact supplemental air bags			
Roof-mounted curtain side-impact air bags with rollover sensor for front outboard occupant head protection			
Vehicle Dynamic Control (VDC) with Traction Control System (TCS)			
2-wheel Active Brake Limited Slip (ABLS)			
3-point ALR/ELR passenger seat belt system (ELR for driver)			
Front seat belts with pretensioners and load limiters			
Passenger-seat top tether anchor			
Zone Body construction with front and rear crumple zones			
Tire Pressure Monitoring System (TPMS) <sup>9</sup>			
Vehicle Security System with alarm			
Nissan Vehicle Immobilizer System			

## NV<sup>®</sup> CARGO PACKAGES

TP Technology Package with RearView Monitor (SV, SL)
NissanConnect <sup>SM</sup> with Navigation and Mobile Apps and 5.8" color touch-screen monitor <sup>2</sup> • Nissan Voice Recognition for audio and navigation • Bluetooth <sup>®</sup> Hands-free Phone System <sup>5</sup> • SiriusXM <sup>®</sup> Traffic and Travel Link <sup>®3</sup> • Streaming audio via Bluetooth <sup>®</sup> wireless technology <sup>8</sup> • Hands-free text messaging assistant <sup>4</sup> • SiriusXM <sup>®</sup> Satellite Radio <sup>7</sup> • USB connection port for iPod <sup>®</sup> and other compatible devices • RearView Monitor

R Rear Door Glass Package
Rear door windows with privacy glass • Interior rearview mirror • Rear window defroster

SD Sliding Door Glass Package
Sliding side door window with privacy glass on passenger side

A All-Around Glass Package (2500 S High Roof, 3500 S High Roof)
2nd- and 3rd-row windows with privacy glass and left side pop-out functionality • Rear door windows with privacy glass • Interior rearview mirror • Rear window defroster

P S Power Basic Package
Power windows with driver's one-touch auto-down with auto-reverse • Power door locks with auto-locking feature • Cruise control with steering wheel-mounted controls • Remote keyless entry

V S Vinyl Seat Package
Gray vinyl seats

■ Standard	SD Part of Sliding Door Glass Package
□ Optional	A Part of All-Around Glass Package
H High Roof	P Part of Power Basic Package (S)
TP Part of Technology Package (SV, SL)	V Part of Vinyl Seat Package (S)
R Part of Rear Door Glass Package	

<sup>1</sup>See Nissan Towing Guide and Owner's Manual for proper use. <sup>2</sup>Driving is serious business. Only use features when safe to do so. App availability is dependent upon vehicle model, trim level, packaging, and/or options. See [NissanUSA.com/connect](http://NissanUSA.com/connect) for complete app availability details. Never program while driving. GPS mapping may not be detailed in all areas or reflect current road status. Compatible smartphone required. Cellular network and GPS signals not available in all areas and/or at all times. Technology is evolving, and changes by independent companies are not within Nissan's control. Nissan is not responsible for associated costs that may be required for continued operation due to cellular network termination (including equipment upgrades, if available, or roaming charges on alternative networks) or other third party changes. Should a third party provider terminate/restrict service, service may be terminated without notice and with no liability to Nissan and its agents or affiliates. Subscription Agreement required and terms and conditions of Subscription Agreement apply. See [NissanUSA.com/connect](http://NissanUSA.com/connect) for details. Thirty-six (36) month trial period begins on your date of vehicle purchase or lease of a new Nissan; subsequently a paid subscription is required (excluding Pandora<sup>®</sup> if Pandora app via NissanConnect is equipped on vehicle) at the then current rate to continue to receive services. Text rates and/or data usage may apply. <sup>3</sup>Required monthly subscriptions sold separately for each available SiriusXM<sup>®</sup> feature after trial period, and are continuous until you call SiriusXM to cancel. Installation costs, one-time activation fee, other fees and taxes will apply. Each SiriusXM<sup>®</sup> feature availability is dependent upon vehicle model, trim level, packaging, and/or options, and may only be available in select markets. Satellite Radio U.S. service, NavWeather<sup>®</sup> service, and SiriusXM<sup>®</sup> Travel Link<sup>®</sup> services (if any of the foregoing features are equipped on vehicle) available only to those 18 or older in the 48 contiguous states and D.C. Fees and programming subject to change. Subscriptions governed by Customer Agreement available at [siriusxm.com](http://siriusxm.com). ©2015 Sirius XM Radio Inc. Sirius<sup>®</sup> XM<sup>®</sup> and all related marks and logos are trademarks of Sirius XM Radio Inc. <sup>4</sup>Use the text messaging feature after stopping your vehicle in a safe location. If you have to use the feature while driving, exercise extreme caution at all times so full attention may be given to vehicle operation. Compatible smartphone required. Text rates and/or data usage may apply. <sup>5</sup>Availability of specific features is dependent upon the phone's Bluetooth<sup>®</sup> support. Please refer to your phone Owner's Manual for details. Bluetooth<sup>®</sup> word mark and logos are owned by Bluetooth SIG, Inc., and any use of such marks by Nissan is under license. See [NissanUSA.com/bluetooth](http://NissanUSA.com/bluetooth) for details. <sup>6</sup>Driving is serious business and requires your full attention. If you have to use the connected device while driving, exercise extreme caution at all times so full attention may be given to vehicle operation. iPod<sup>®</sup> is a registered trademark of Apple, Inc. All rights reserved. iPod<sup>®</sup> or other external device not included. <sup>7</sup>TPMS is not a substitute for regular tire pressure checks.