

## NISSAN INTELLIGENT MOBILITY™

Nissan Intelligent Mobility guides everything we do. We're using new technologies to transform cars from mere driving machines into assistants. Together the journey is more confident, connected, and exciting. Whether it's cars that assist in the driving task, or highways that charge your EV as you go along, it's all in the very near future. And it's a future already taking shape in the Nissan you drive today.



Innovation  
that excites

## 2019 NV® CARGO

### SEE NV® CARGO COME TO LIFE

Go to [NissanUSA.com](http://NissanUSA.com) and find an interactive brochure for NV Cargo and every Nissan in the lineup. Available on desktop, smartphone, or tablet, it's the full product story – including demos, videos, and complete info on trims, colors, and accessories.



<sup>1</sup>Ward's Light Vehicle Segmentation. 2019 NV® Cargo with available V8 engine vs. latest in-market competitors in Ward's Large Van segment. Based on manufacturer's websites. <sup>2</sup>Ward's Light Vehicle Segmentation. 2019 NV® Cargo with available V8 engine vs. available V8 in-market competitors in Ward's Large Van segment. Based on Naturally Aspirated Gas Engine. Based on manufacturer's websites. <sup>3</sup>Requires accessory tow hitch receiver. See Nissan Towing Guide and Owner's Manual for additional information. <sup>4</sup>Vehicle(s) shown equipped with third-party accessories. <sup>5</sup>Owner receives a commercial upfit package designed, manufactured, tested and installed by an independent upfit supplier. All participating upfit suppliers must be National Truck Equipment Association members. Parts supplied by upfit suppliers and any damage or failures caused by installation or use of upfit parts are not covered by the Nissan New Vehicle Limited Warranty. Owner should review the upfit supplier's warranty. **Nissan is not responsible for the safety or quality of the parts or modifications made by the upfit supplier.** The Nissan Commercial Incentive Program is only available to valid business entities. Program not available to retail consumers. Certain model restrictions apply. See dealer for complete details and restrictions. <sup>6</sup>Cargo shown for display purposes only. Cargo and load capacity limited by weight and distribution. Always secure cargo. Heavy loading of the vehicle with cargo, especially on the roof, will affect the handling and stability of the vehicle. Do not place sharp objects or store objects in the front of the overhead compartment that exceed height of shelving lip. See Owner's Manual for details. <sup>7</sup>Ward's Light Vehicle Segmentation. Available feature. 2019 NV1500® Cargo SV and above vs. latest in-market competitors in Ward's Large Van segment. Based on manufacturer's websites. <sup>8</sup>Available feature. <sup>9</sup>Driving is serious business and requires your full attention. If you have to use the connected device while driving, exercise extreme caution at all times so full attention may be given to vehicle operation. <sup>10</sup>Available services/features may be shown. Compatible connected device may be required. Only use services/features and device when safe and legal to do so. Subject to GPS and wireless network availability and connection, and system/technology limitations. Text rates/data usage/subscription may apply. Some services/features provided by companies not within Nissan or its partners' or agents' control and may be discontinued at any time. For more information, see dealer, Owner's Manual, or [NissanUSA.com/connect/important-information](http://NissanUSA.com/connect/important-information). <sup>11</sup>RearView Monitor may not detect every object and does not eliminate blind spots or warn of moving objects. See Owner's Manual for safety information. <sup>12</sup>Never program while driving. GPS mapping may not be detailed in all areas or reflect current road status. <sup>13</sup>Use Hands Free Text Messaging when parked in a safe location. If you must use while driving, monitor traffic conditions and keep both hands on the steering wheel to prevent collisions. Compatible device required. Message and data rates may apply. <sup>14</sup>Claim based on years/mileage (whichever occurs first) covered under the New Vehicle Limited Warranty basic coverage. Ward's Light Vehicle Segmentation: 2019 Nissan NV® Cargo, NV® Passenger v. in-market Large Van Class; 2019 Nissan NV200® v. in-market Small Van Class. Commercial Vans compared only. Nissan's New Vehicle Limited Warranty basic coverage excludes tires, corrosion coverage and federal and California emission performance and defect coverage. Other terms and conditions apply. See dealer for complete warranty details. NV200® Taxi is covered under a separate limited warranty with a different level of coverage. <sup>15</sup>All prices listed herein are Manufacturer's Suggested Retail Prices (MSRP), which exclude installation, taxes and other costs, and are subject to change without prior notice. Dealer sets actual price. Pictures are for informational purposes only. <sup>16</sup>Genuine Nissan Accessories are covered by Nissan's Limited Warranty on Genuine Nissan Replacement Parts, Genuine NISMO® S-Tune Parts, and Genuine Nissan Accessories for the longer of 12 months/12,000 miles (whichever occurs first) or the remaining period under the 5-year/100,000-mile (whichever occurs first) Nissan New Vehicle Limited Warranty. Terms and conditions apply. See Warranty Information Booklet for details. <sup>17</sup>Basic plan is complimentary for first three years starting from accessory purchase date; subsequently a paid subscription is required at the then current rate. Terms, conditions, and limitations apply. <sup>18</sup>Air bags are only a supplemental restraint system; always wear your seat belt. Rear-facing child restraints should not be placed in the front-passenger's seat. Air bags will only inflate in certain accidents. See Owner's Manual for safety information. <sup>19</sup>Vehicle Dynamic Control cannot prevent collisions due to abrupt steering, carelessness, or dangerous driving techniques. It should remain on when driving, except when freeing the vehicle from mud or snow. See Owner's Manual for safety information. <sup>20</sup>The optional Rear Sonar System is a convenience, but is not a substitute for proper backing procedures. Always turn and check that it is safe to do so before backing up. May not detect every object behind you. <sup>21</sup>Payload rating represents maximum allowable weight of people and cargo, and can be reduced by the weight of optional equipment. <sup>22</sup>When using load index 94 (1477 lb) tires. Use of other tires may reduce payload capacity. <sup>23</sup>See dealer for specific availability. <sup>24</sup>3500 models only. <sup>25</sup>With available tow hitch accessory for V6 and V8 models. See Nissan Towing Guidelines and Owner's Manual for additional information. <sup>26</sup>With standard factory tow hitch. V8 models only. See Nissan Towing Guide and Owner's Manual for additional information. <sup>27</sup>Brake Assist cannot prevent all collisions and may not provide warning or braking in all conditions. Driver should monitor traffic conditions and brake as needed to prevent collisions. See Owner's Manual for safety information. <sup>28</sup>Tire Pressure Monitoring System is not a substitute for regular tire pressure checks. See Owner's Manual for safety information. <sup>29</sup>For a period of 36 months/36,000 miles from the date the vehicle is delivered to the first retail buyer or otherwise put into use, whichever is earlier. Adrian Steel® is a registered trademark of Adrian Steel Company. Bluetooth® is a registered trademark of Bluetooth SIG, Inc. Facebook® is a registered trademark of Facebook, Inc. The Sirius®, XM®, and SiriusXM® names and all related marks and logos are trademarks of Sirius XM Radio Inc. All other trademarks are the property of their respective owners. Twitter® is a registered trademark of Twitter, Inc. YouTube® is a registered trademark of Google Inc. This brochure is intended for general descriptive and informational purposes only. It is subject to change and does not constitute an offer, representation or warranty (express or implied) by Nissan North America, Inc. Interested parties should confirm the accuracy of any information in this brochure as it relates to a vehicle directly with Nissan North America, Inc., before relying on it to make a purchase decision. Nissan North America, Inc., reserves the right to make changes, at any time, without prior notice, in prices, colors, materials, equipment, specifications, and models and to discontinue models or equipment. Due to continuous product development and other pre- and post-production factors, actual vehicle, materials and specifications may vary from this brochure. Some vehicles shown with optional equipment. See the actual vehicle for complete accuracy. Availability and delivery times for particular models or equipment may vary. Specifications, options and accessories may differ in Hawaii, U.S. territories and other countries. For additional information on availability, options or accessories, see your Nissan dealer or contact Nissan North America, Inc. At [NissanUSA.com](http://NissanUSA.com), you'll find virtual product demonstrations, a way to "build your own Nissan," a dealer locator, and more information about key Nissan support services. Or if you'd prefer, call 1-800-NISSAN-3 for answers to specific questions about NV® Cargo or any other Nissan vehicle. The Nissan names, logos, product names, feature names, and slogans are trademarks owned by or licensed to Nissan Motor Co. Ltd. and/or its North American subsidiaries. Other trademarks and trade names are those of their respective owners. **Always wear your seat belt, and please drive responsibly.** ©2018 Nissan North America, Inc. '19 NV® Cargo. 1922636-N-10/18-50MCG



NISSAN Commercial Vehicles®

See NV® Cargo in action at:  
[bit.ly/19nvcargo-video](https://bit.ly/19nvcargo-video)



Go for the big jobs. The 2019 NV® Cargo High Roof and NV® Cargo Standard Roof ensure you'll have two great ways to handle them. These are the kinds of vehicles you need to do business today: smarter, tougher, and more comfortable with available advanced and convenient technology. Try one or both of them – we think you'll find they're the perfect tool to get more work done.

**BEST-IN-CLASS**

HORSEPOWER (375) AND TORQUE (387 LB-FT)<sup>1, 2</sup>

NV3500\* HD SV Cargo High Roof with Endurance® V8 engine shown in Glacier White and equipped with third-party accessories<sup>3, 4, 5</sup>



234 CU. FT.  
CARGO CAPACITY<sup>6</sup>



323 CU. FT.  
CARGO CAPACITY<sup>6</sup>

## TWO WAYS TO GET THE JOB DONE

Regardless of which model you choose, the standard roof with 234 cu. ft. of cargo capacity or the high roof with a massive 323 cu. ft. of cargo capacity, you'll get more than enough capability to complete the job.<sup>6</sup>

Up to ten integrated roof-mounting points<sup>6</sup>

Six floor-mounted D-rings<sup>6</sup>

57 reinforced cargo-mounting points<sup>6</sup>

## YOUR MOBILE OFFICE

When the driver's seat needs to turn into an office chair, NV Cargo has you covered. With a flexible class-exclusive available multitasking center console, fold-down passenger seat, and plenty of power options, productivity never has to slow down.<sup>6,7</sup>

Fold-down passenger seat

Flexible center console<sup>6,7,8</sup>

12-volt DC power outlet<sup>9</sup>



Up to ten integrated roof-mounting points<sup>4, 5, 6</sup>

**57** Integrated and reinforced interior cargo-mounting points<sup>6</sup>

## FLEXIBLE INTERIOR SPACE

When the job changes, so does NV<sup>®</sup> Cargo. The flat loading floor can handle even the most cumbersome types of cargo. And with 54 inches between wheel wells, it has plenty of room for seriously wide items. There's interior space for practically every project.<sup>6</sup>

Room for two 40" x 48" pallets<sup>6</sup>

Fits 10' piping<sup>6</sup>

Space for 4' x 8' drywall sheets<sup>6</sup>



## NISSAN INTELLIGENT MOBILITY™



## HARDWORKING TECHNOLOGY

Never miss a beat with the available Navigation Package. Featuring NissanConnect<sup>®</sup> with Mobile Apps, you've got a suite of high-tech features ready to give your business a boost. You'll also have standard features like Hands-free Text Messaging Assistant, and a convenient RearView Monitor.<sup>10, 11, 12, 13</sup>

RearView Monitor<sup>11</sup>

Nissan Navigation System<sup>8, 12</sup>

Hands-free Text Messaging Assistant<sup>13</sup>

OVER **800000**  
MILES AND 7,000 QUALITY  
AND DURABILITY TESTS

When it comes to making the toughest commercial vans you can buy, we go the extra distance for you, and it's no Sunday drive. We simulate years of corrosion, soaking a vehicle with salt, baking it, then pounding it around a test track. We wreak havoc with suspension and body components by driving through potholes, dips, and over 4 x 4 beams. Special chambers crank up the heat to 140° and humidity to 95% to break down seals and age interiors. Do we really need to go to such extremes? Yes, because every day, you depend on your Nissan Commercial Van to do your job. And that's the motivation for us to do ours.



HEAT CHAMBER



It's a Nissan Commercial Dealer that specializes in selling and servicing the entire NV® lineup. Only Business Certified Dealers offer exclusive

commercial incentive packages while providing dedicated Commercial Vehicles Account Managers and Priority Service. We offer complimentary upfit packages as part of our exclusive commercial incentive program. We also offer Commercial Lending Programs and much more.<sup>5,6</sup>

America's Best Commercial Van Warranty  
**5 YEARS/100,000 MILES**  
BUMPER-TO-BUMPER WARRANTY<sup>14</sup>

See dealer for limited warranty details.

Going above and beyond is the Nissan way. After passing all of the brutal quality and durability testing, we're sure you'll have a van you can count on. To prove our confidence and our commitment, we are pleased to introduce America's Best Commercial Van Warranty, a bumper-to-bumper limited warranty for 5 years or 100,000 miles, whichever comes first.<sup>14</sup> And that means we've got your back, so you can keep moving forward. For more details of the limited warranty, please go to [NissanCommercialVehicles.com](http://NissanCommercialVehicles.com) or ask your Nissan Business Certified Dealer.<sup>14</sup>

**KEY BENEFITS FROM BUSINESS CERTIFIED DEALER:**

- Priority Service with Next Available Bay and Next Available Technician
- Special Commercial Lending programs, including available lines of credit
- Dedicated Commercial Vehicles Account Manager to handle commercial customer transactions at your location
- Fleet Pricing available for qualified accounts
- 24-hour towing with Roadside Assistance, including Trip Interruption reimbursement on select models<sup>10</sup>
- A commercial sales and service experience that fits your schedule
- Complimentary shuttle service
- Available Demonstrator Vehicles
- Mailings with special offers and incentives
- Access to Commercial Vehicles inventory
- Commercial service advisors to get you on the road quickly and minimize downtime
- Qualifying customers will receive support from the Commercial Upfit Incentive Program, and will be able to choose from complimentary options: cargo management equipment or cash back – offers vary by model.<sup>5</sup>



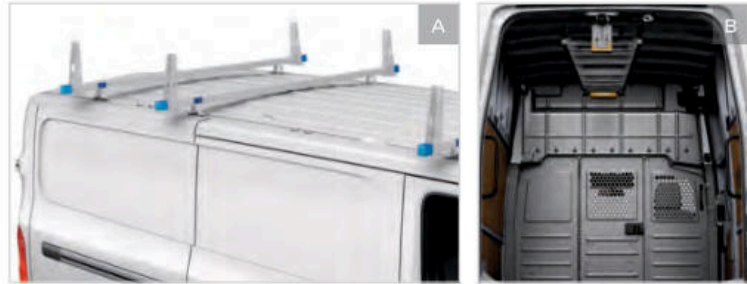
NV3500<sup>®</sup> HD Cargo  
High Roof with Endurance<sup>®</sup> V8 shown.<sup>4,6</sup>

## CHOOSE ONE OF THE 4 COMPLIMENTARY INCENTIVES

Only Business Certified Dealers offer exclusive commercial incentive packages. We offer complimentary upfit packages as part of our exclusive commercial incentive program. Choose from racks and bins at no additional cost, or an upfit allowance only when you buy from the Business Certified network.<sup>4, 5</sup>

### 1. Complimentary Utility Package<sup>6</sup>

- A. MSRP:<sup>15</sup> \$1,850 / **Customer Responsibility: \$0**  
Standard Roof model offers a cargo partition and a 3-bar utility rack.  
B. MSRP:<sup>15</sup> \$1,860 / **Customer Responsibility: \$0**  
High Roof model offers a cargo partition and interior ladder keeper.  
Built by Adrian Steel.<sup>9</sup>



### 2. Complimentary EZ Load Ladder Rack Package<sup>6</sup>

- MSRP:<sup>15</sup> \$1,950 / **Customer Responsibility: \$0**  
Offered exclusively on Standard Roof models, this package offers a cargo partition and EZ Load Ladder Rack built by Adrian Steel.<sup>9</sup>



### 3. Complimentary Cargo Management System<sup>6</sup>

- Standard Roof: MSRP:<sup>15</sup> \$2,160 / **Customer Responsibility: \$0**  
High Roof: MSRP:<sup>15</sup> \$2,270 / **Customer Responsibility: \$0**  
Package offers a cargo partition, a 4-hook bar with bracket, and three 44" wide Adrian Steel<sup>®</sup> AD Series shelving units.



- ### 4. Commercial Upfit Allowance Incentive
- This option allows eligible customers to take advantage of an upfit allowance incentive. See your local Nissan Business Certified Dealer for complete guidelines surrounding the upfit allowance amounts and eligibility requirements.

## OR STEP UP TO ONE OF 6 UPGRADE PACKAGES

Business Certified also helps you save money with exclusive incentives, with six additional upgrade packages as an alternative to the four complimentary offerings. Packages are offered at a discount to the customer. Customer participation will vary based on package selected.

- ### 1. Cable Upgrade Package<sup>6</sup>
- offers a cargo partition, three 44" wide Adrian Steel<sup>®</sup> AD Series shelving units, three drawer units, one door kit and two 4-hook bars.

**SR/HR MSRP:<sup>15</sup> \$2,970/\$3,060 - Customer Responsibility: \$549**



- ### 2. General Service Upgrade Package<sup>6</sup>
- offers a cargo partition, three 44" wide Adrian Steel<sup>®</sup> AD Series shelving units, three drawer units, parts bin system, 4-hook bar and two hooks.

**SR/HR MSRP:<sup>15</sup> \$3,075/\$3,165 - Customer Responsibility: \$625**



- ### 3. Security Upgrade Package<sup>6</sup>
- offers a cargo partition, three 44" wide Adrian Steel<sup>®</sup> AD Series shelving units, three drawer units, parts bin system, two door kits, 4-hook bar, two hooks and literature rack.

**SR/HR MSRP:<sup>15</sup> \$3,465/\$3,555 - Customer Responsibility: \$882**



- ### 4. HVAC Upgrade Package<sup>6</sup>
- offers a cargo partition, three 44" wide Adrian Steel<sup>®</sup> AD Series shelving units, four drawer units, parts bin system, one door kit, 4-hook bars, 3-tank rack and literature rack.

**SR/HR MSRP:<sup>15</sup> \$3,625/\$3,715 - Customer Responsibility: \$992**



- ### 5. Electrical Contractor Upgrade Package<sup>6</sup>
- offers a cargo partition, three 44" wide Adrian Steel<sup>®</sup> AD Series shelving units, three drawer units, two door kits, two parts bin systems, wire reel holder, literature rack and 4-hook bar.

**SR/HR MSRP:<sup>15</sup> \$3,800/\$3,890 - Customer Responsibility: \$1,121**



- ### 6. Locksmith Upgrade Package<sup>6</sup>
- offers a cargo partition, Drawer and Cabinet Module, Workbench Module (Taller for HR), 6-shelf Literature File and 4-hook bar from the Adrian Steel<sup>®</sup> AD series.

**SR/HR MSRP:<sup>15</sup> \$4,925/\$5,495 - Customer Responsibility: \$1,900/\$2,400**



## CHOOSE YOUR ACCESSORIES



Every Genuine Nissan Accessory is custom-fit, custom-designed and durability-tested. Each one is backed by Nissan's 5-year/100,000-mile (whichever occurs first) limited warranty (if installed by dealer at the time of purchase), and can be financed when installed by dealer at time of purchase.<sup>16</sup>

### A. Interior Wall Panels

Help preserve and protect your vehicle's interior.

### B. Shelving Support Brackets

Help reinforce walls for heavily loaded shelves.

### C. Splash Guards

Save your vehicle from an unwelcome mud bath.

### D. Weight-distributing Hitch Ball Mount, Class IV<sup>3</sup>

Makes for a safer ride when towing heavy loads.

### E. Frameless Auto-dimming Rearview Mirror with Universal Remote

Visibility and convenience at your fingertips.

### F. Body Side Moldings

Protect your doors from dings and dents.

### G. All-season Floor Mats

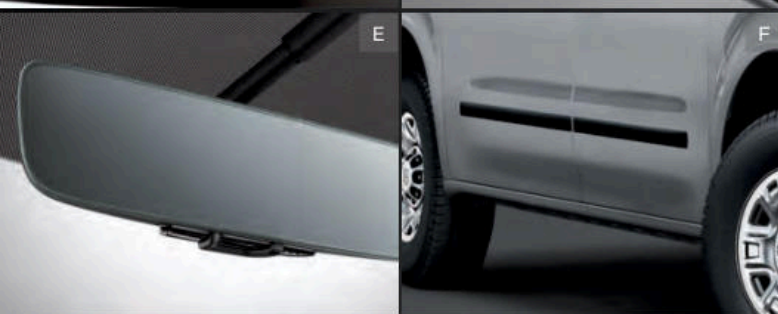
Because the weather outside isn't always delightful.

### H. Emergency Road Kit

Everything you need for life's little uncertainties.

#### Additional Accessories:

- Nissan Fleet Tracker<sup>17</sup>
- Nissan Vehicle Tracking and Recovery System<sup>10</sup>
- Hood Protector
- Side-window Deflectors
- Tow Hooks
- Towing Accessories<sup>3</sup>
- And More



## GENUINE NISSAN ACCESSORIES

# WORK SMARTER AND HARDER

For more information and to shop online for NV® Cargo Genuine Nissan Accessories, go to [bit.ly/19nvcargo-estore](http://bit.ly/19nvcargo-estore)



Nissan NV3500® HD Cargo Standard Roof SL shown in Brilliant Silver Metallic with Hood Protector, Telescoping Tow Mirrors, Tow Hooks, Side-window Deflectors, Body Side Moldings, and Splash Guards.

## TRIM BUILD

NV1500 <sup>®</sup> S	INCLUDES:	NV1500 <sup>®</sup> SV	INCLUDES:
<ul style="list-style-type: none"> <li>4.0-liter DOHC V6 engine</li> <li>5-speed automatic transmission</li> <li>14" Brakes front/rear</li> <li>17" Steel wheels with 245/70R17 tires</li> <li>Water-repellent cloth seats with vinyl wear patches on bolsters</li> <li>Six floor-mounted D-rings in cargo area<sup>6</sup></li> <li>57 Integrated reinforced cargo-mounting points<sup>6</sup></li> <li>Ten exterior roof rack-mounting points<sup>6</sup></li> <li>Pre-wiring for electrical upfitting</li> <li>Power windows and door locks</li> <li>AM/FM/CD audio system with 7" touch-screen color monitor</li> </ul>	<ul style="list-style-type: none"> <li>Bluetooth<sup>®</sup> Hands-free Phone System<sup>10</sup></li> <li>Hands-free Text Messaging Assistant<sup>13</sup></li> <li>Streaming audio via Bluetooth<sup>®</sup> wireless technology<sup>10</sup></li> <li>USB connection port<sup>9</sup></li> <li>RearView Monitor<sup>11</sup></li> <li>Driver's and passenger's seat-mounted side-impact supplemental air bags<sup>18</sup></li> <li>Roof-mounted curtain side-impact air bags with rollover sensor for front outboard occupant head protection<sup>18</sup></li> <li>Vehicle Dynamic Control (VDC)<sup>19</sup></li> </ul>	<ul style="list-style-type: none"> <li>NV1500<sup>®</sup> S contents</li> <li>17" Styled steel wheels</li> <li>Rear cargo floor protector</li> <li>Hardboard interior cargo panels</li> <li>Dual power outside mirrors</li> <li>Five assist grips (four on S models)</li> <li>Steering wheel-mounted controls</li> <li>Two additional speakers</li> <li>Rear Sonar System<sup>20</sup></li> </ul>	

NV2500 <sup>®</sup> HD S	INCLUDES:	NV2500 <sup>®</sup> HD SV	INCLUDES:	NV2500 <sup>®</sup> HD SL	INCLUDES:
<ul style="list-style-type: none"> <li>NV1500<sup>®</sup> S contents</li> <li>Payload increase over NV1500<sup>®</sup> S<sup>21, 22</sup></li> <li>Dual power outside mirrors</li> <li>Chrome outside mirrors (V8)</li> <li>Driver's under-seat storage tray</li> <li>Two additional cargo area work lights</li> <li>Rear door storage pocket</li> </ul>	<ul style="list-style-type: none"> <li>NV1500<sup>®</sup> SV and NV2500<sup>®</sup> HD S contents</li> <li>Multi-functional lockable center console with 12-volt and 120-volt outlets<sup>6, 9</sup></li> <li>Additional 120-volt power outlet in cargo area<sup>9</sup></li> <li>Two cup holders</li> <li>Delete driver's and passenger's armrests</li> </ul>	<ul style="list-style-type: none"> <li>NV2500<sup>®</sup> HD SV contents</li> <li>Chrome grille, bumpers, and door handles</li> <li>17" x 7.5" chrome-clad wheels</li> <li>8-way power adjustable driver's seat with manual lumbar</li> <li>Vehicle Security System with alarm</li> <li>Nissan Vehicle Immobilizer System</li> </ul>			
<ul style="list-style-type: none"> <li>Optional High Roof Model Adds: full-width overhead console and eight exterior roof rack-mounting points<sup>6</sup></li> <li>Optional 5.6-liter DOHC V8 engine with standard towing equipment (S, SV only)<sup>3</sup></li> <li>7-speed automatic transmission (V8)</li> </ul>					

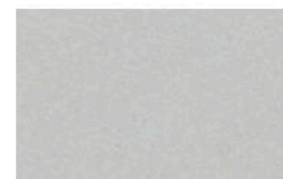
NV3500 <sup>®</sup> HD S	INCLUDES:	NV3500 <sup>®</sup> HD SV	INCLUDES:	NV3500 <sup>®</sup> HD SL	INCLUDES:
<ul style="list-style-type: none"> <li>NV2500<sup>®</sup> HD S contents</li> <li>Payload increase over 2500 HD S<sup>21, 22</sup></li> <li>5.6-liter DOHC V8 engine</li> <li>7-speed automatic transmission</li> <li>245/75R17 all-season tires</li> <li>Power heated extendable tow mirrors</li> <li>Two front tow hooks</li> <li>7-pin connector and brake controller pre-wiring<sup>3</sup></li> <li>Class IV tow hitch receiver<sup>3</sup></li> <li>HD battery</li> </ul>	<ul style="list-style-type: none"> <li>NV1500<sup>®</sup> SV and NV3500<sup>®</sup> HD S contents</li> <li>Multi-functional lockable center console with 12-volt and 120-volt outlets<sup>6, 9</sup></li> <li>Additional 120-volt power outlet in cargo area<sup>9</sup></li> <li>Two cup holders</li> <li>Delete driver's and passenger's armrests</li> </ul>	<ul style="list-style-type: none"> <li>NV3500<sup>®</sup> HD SV contents</li> <li>Chrome grille, bumpers, and door handles</li> <li>Chrome outside mirrors</li> <li>17" x 7.5" chrome-clad wheels</li> <li>8-way power adjustable driver's seat with manual lumbar</li> <li>Vehicle Security System with alarm</li> <li>Nissan Vehicle Immobilizer System</li> </ul>			
<ul style="list-style-type: none"> <li>Optional High Roof Model adds: full-width overhead console and eight exterior roof rack-mounting points<sup>6</sup></li> </ul>					

**KEY AVAILABLE PACKAGES:** Navigation Package (SV, SL);<sup>12</sup> Vinyl Seat Package (S);<sup>23</sup> Rear Door Glass Package<sup>23</sup>

## PAINT SELECTIONS



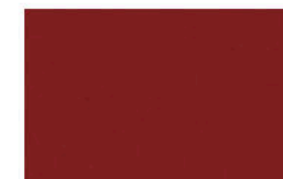
Glacier White  
S | SV | SL



Brilliant Silver Metallic  
S | SV | SL



Arctic Blue Metallic  
SV | SL



Cayenne Red Metallic  
SV | SL



Super Black  
S | SV | SL

Nissan has taken care to ensure that the color swatches presented here are the closest possible representations of actual vehicle colors. Swatches may vary slightly due to the printing process and whether viewed in daylight, fluorescent or incandescent light. Please see the actual colors at your dealer.

## DIMENSIONS/CAPACITIES/WEIGHTS

Exterior Dimensions - Inches		
	Standard Roof	High Roof
Wheelbase	146.1	146.1
Overall length	240.6	240.6
Overall width (without mirrors)	79.9	79.9
Overall width (with mirrors)	99.5	99.5
Overall width (with tow mirrors)	102.8	102.8
Overall height	83.9/84.9 <sup>24</sup>	105.0/106.0 <sup>24</sup>
Track width (front/rear)	68.7/68.9	68.7/68.9
Sliding side door width	41.7	41.7
Rear door opening width	61.6	61.6
Rear door opening height	49.8	71.5
Step-in height (front)	18.0/18.7 <sup>24</sup>	18.0/18.7 <sup>24</sup>
Step-in height (slide door)	19.4/20.2 <sup>24</sup>	19.4/20.2 <sup>24</sup>
Step-in height (rear)	19.8/20.9 <sup>24</sup>	19.8/20.9 <sup>24</sup>
Cargo area liftover height	28.5	28.5
Angle of approach (degrees)	17.5°	17.5°
Angle of departure (degrees)	17.4°	17.4°
Turning diameter (ft.)	45.2	45.2

Cargo Dimensions - Inches <sup>6</sup>		
	Standard Roof	High Roof
Cargo volume (cu. ft.)	234.1	323.1
EPA interior passenger volume (cu. ft.)	68.3	101.5
Total interior volume (cu. ft.)	299.7	420.5
Maximum cargo length	120.6	120.6
Maximum cargo length behind center console at vehicle center	121.9	121.9
Maximum cargo length without center console at vehicle center	150.4	150.4
Maximum cargo width	70.2	70.2
Cargo width at wheelhouse floor	54.3	54.3
Maximum cargo height	55.8	76.9

Interior Dimensions - Inches								
	Standard Roof	High Roof						
Head room	42.8	63.6						
Leg room	42.0	42.0						
Hip room	60.6	60.6						
Shoulder room	65.7	65.7						
Capacities								
Roof load capacity (lbs.)	500	300						
Seating capacity	2	2						
Fuel tank (gals.)	28.0	28.0						
Engine oil (qts.)	5.4 (V6)	6.5 (V8)	5.4 (V6)	6.5 (V8)				
Maximum Payload <sup>21</sup> - Lbs.								
	1500 S	1500 SV	2500 S	2500 SV	2500 SL	3500 S	3500 SV	3500 SL
Std. Roof (V6)	2,730	2,620	3,280	3,140	3,120	-	-	-
Std. Roof (V8)	-	-	3,060	2,920	-	3,850	3,720	3,700
High Roof (V6)	-	-	3,110	2,980	2,960	-	-	-
High Roof (V8)	-	-	2,900	2,760	-	3,690	3,550	3,540
Maximum Towing <sup>3</sup> - Lbs.								
With standard bumper towing	2,000 <sup>3</sup>							
With tow hitch receiver	6,900 <sup>25</sup>							
With tow hitch receiver (V8)	9,400 <sup>26</sup>							
GVWR - Lbs.								
	1500 S	1500 SV	2500 S	2500 SV	2500 SL	3500 S	3500 SV	3500 SL
	8,550	8,550	9,100	9,100	9,100	9,900	9,900	9,900
Curb Weights - Lbs.								
Std. Roof (V6)	5,817	5,920	5,819	5,957	5,971	-	-	-
Std. Roof (V8)	-	-	6,034	6,172	-	6,042	6,180	6,194
High Roof (V6)	-	-	5,982	6,120	6,134	-	-	-
High Roof (V8)	-	-	6,197	6,335	-	6,205	6,343	6,357

**SPECIFICATIONS**

Engines	1500		2500			3500		
	S	SV	S	SV	SL	S	SV	SL
4.0-liter DOHC 24-valve V6 engine	■	■	■	■	■			
—Horsepower – 261 hp @ 5,600 rpm								
—Torque – 281 lb-ft @ 4,400 rpm								
5.6-liter DOHC								
—32-valve V8 engine			□	□		■	■	■
—Horsepower – 375 hp @ 5,200 rpm								
—Torque – 387 lb-ft @ 3,400 rpm								
Emissions – 50-state emissions	■	■	■	■	■	■	■	■
Continuously Variable Valve Timing Control System (CVTCS)	■	■	■	■	■	■	■	■
Nissan Direct Ignition System	■	■	■	■	■	■	■	■
Electronic drive-by-wire throttle	■	■	■	■	■	■	■	■
Alternator (130 amps)	■	■	■	■	■	■	■	■
Heavy-duty battery (V8) <sup>3</sup>			□	□		■	■	■

Drivetrain	1500		2500			3500		
5-speed automatic transmission	■	■	■	■	■			
7-speed automatic transmission (V8)			□	□		■	■	■
Final drive ratio – (3.36:1)	■	■	■	■	■	■	■	■

Brakes	1500		2500			3500		
14.2" Front vented disc brakes	■	■	■	■	■	■	■	■
14.4" Rear vented disc brakes	■	■	■	■	■	■	■	■
4-wheel Anti-lock Braking System (ABS)	■	■	■	■	■	■	■	■
Electronic Brake force Distribution (EBD)	■	■	■	■	■	■	■	■
Brake Assist <sup>27</sup>	■	■	■	■	■	■	■	■

Suspension/Steering	1500		2500			3500		
Front independent double-wishbone suspension	■	■	■	■	■	■	■	■
Multi-leaf rear suspension with solid axle	■	■	■	■	■	■	■	■
Front and rear stabilizer bars	■	■	■	■	■	■	■	■
Engine-speed-sensitive hydraulic recirculating ball steering	■	■	■	■	■	■	■	■
Full-length, fully boxed ladder frame	■	■	■	■	■	■	■	■

Wheels/Tires	1500		2500			3500		
17" x 7.5" steel wheels	■		■			■		
17" x 7.5" styled steel wheels		■					■	
17" x 7.5" chrome-clad wheels					■			■
LT245/70R17 all-season tires	■	■	■	■	■	■	■	■
LT245/75R17 all-season tires						■	■	■

Exterior Features	1500		2500			3500		
Standard Roof	■	■	■	■	■	■	■	■
High Roof			□	□	□	□	□	□
Halogen headlights	■	■	■	■	■	■	■	■
Black grille, bumpers and door handles	■	■	■	■	■	■	■	■
Chrome grille, bumpers and door handles								■
Two front tow hooks			□	□		■	■	■
Black outside mirrors	■	■	■	■	■	■	■	■
Heated chrome outside mirrors					■			■
Dual power outside mirrors		■	■	■	■	■	■	■
Power heated chrome extendable tow mirrors (V8)			□	□		■	■	■

Exterior Features (continued)	1500		2500			3500		
Ten roof rack-mounting points (Standard Roof) <sup>6</sup>	■	■	■	■	■	■	■	■
Eight roof rack-mounting points (High Roof) <sup>6</sup>			H	H	H	H	H	H
Sliding side door on passenger side	■	■	■	■	■	■	■	■
50/50 Split rear cargo doors with opening locking feature	■	■	■	■	■	■	■	■
Magnetic door locks (to secure open rear doors)	■	■	■	■	■	■	■	■
243" Maximum opening range for rear cargo doors	■	■	■	■	■	■	■	■
Rear window defroster <sup>23</sup>	R	R	R	R	R	R	R	R
Rear privacy glass <sup>23</sup>	R	R	R	R	R	R	R	R
7-pin connector and brake controller pre-wiring (V8) <sup>3</sup>			□	□		■	■	■
Class IV tow hitch receiver (V8) <sup>3</sup>			□	□		■	■	■

Comfort/Convenience	1500		2500			3500		
Multi-functional trip computer with maintenance intervals	■	■	■	■	■	■	■	■
Bluetooth® Hands-free Phone System <sup>10</sup>	■	■	■	■	■	■	■	■
Hands-free Text Messaging Assistant <sup>13</sup>	■	■	■	■	■	■	■	■
RearView Monitor <sup>11</sup>	■	■	■	■	■	■	■	■
Air conditioning	■	■	■	■	■	■	■	■
36 Integrated reinforced cargo-mounting points for custom shelving <sup>6</sup>	■	■	■	■	■	■	■	■
11 Integrated reinforced cargo-mounting points for bulkhead partition <sup>6</sup>	■	■	■	■	■	■	■	■
Ten integrated reinforced mounting points in ceiling for interior ladder rack installation <sup>6</sup>	■	■	■	■	■	■	■	■
Six floor-mounted D-rings in cargo area <sup>6</sup>	■	■	■	■	■	■	■	■
Pre-wiring for electrical upfitting	■	■	■	■	■	■	■	■
Power windows with driver's one-touch auto-down with auto-reverse	■	■	■	■	■	■	■	■
Power door locks with auto-locking feature	■	■	■	■	■	■	■	■
Remote keyless entry	■	■	■	■	■	■	■	■
Variable intermittent windshield wipers	■	■	■	■	■	■	■	■
Cruise control with steering wheel-mounted controls		■		■		■	■	■
Tilt steering column	■	■	■	■	■	■	■	■
One 12-volt DC power outlets <sup>9</sup>	■	■	■	■	■	■	■	■
Two 12-volt DC power outlets <sup>9</sup>				■	■	■	■	■
Two 120-volt, 400-watt power outlets <sup>9</sup>				■	■	■	■	■
Full-width overhead cabin storage shelving with map lights (High Roof)			H	H	H	H	H	H
Multi-functional lockable center console with file and laptop computer storage with built-in clipboard holder				■	■	■	■	■
Driver's under-seat slide-out storage tray				■	■	■	■	■
Front-door map pockets	■	■	■	■	■	■	■	■
Six cup holders	■	■	■	■	■	■	■	■
Cargo area work light	■	■	■	■	■	■	■	■
Three cargo area work lights			■	■	■	■	■	■
Vertical sidewall design	■	■	■	■	■	■	■	■
Hardboard interior cargo panels				■	■	■	■	■
Interior rearview mirror <sup>23</sup>	R	R	R	R	R	R	R	R
Rear cargo floor protector	■	■	■	■	■	■	■	■
Five assist grips (four on S models)	■	■	■	■	■	■	■	■
Nissan Navigation System, including 5.8" color-touch screen monitor <sup>12</sup>		NP		NP	NP		NP	NP
NissanConnect® Mobile Apps <sup>10</sup>		NP		NP	NP		NP	NP

Comfort/Convenience (continued)	1500		2500			3500		
Nissan Voice Recognition for navigation and audio <sup>12</sup>		NP		NP	NP		NP	NP
SiriusXM® Traffic and Travel Link <sup>10</sup>		NP		NP	NP		NP	NP
Rear door storage			■	■	■	■	■	■
Rear Sonar System <sup>20</sup>		■	■	■	■	■	■	■

Seating/Appointments	1500		2500			3500		
Gray vinyl seats <sup>23</sup>	V		V			V		
Gray cloth seats with reinforced side bolster wear patches on inner and outer bolsters	■	■	■	■	■	■	■	■
Water-repellent seating surfaces	■	■	■	■	■	■	■	■
Seat armrests	■	■	■	■	■	■	■	■
4-way manual driver's seat	■	■	■	■	■	■	■	■
4-way manual passenger's seat	■	■	■	■	■	■	■	■
8-way power adjustable driver's seat with manual lumbar					■			■
Fold-down passenger's seat with seatback tray table	■	■	■	■	■	■	■	■

Audio/Entertainment	1500		2500			3500		
AM/FM/CD audio system with 7" color touch-screen monitor	■	■	■	■	■	■	■	■
AM/FM/CD audio system with 5.8" color touch-screen monitor		NP		NP	NP		NP	NP
Radio Data System (RDS)	■	■	■	■	■	■	■	■
MP3/WMA CD playback capability	■	■	■	■	■	■	■	■
Auxiliary audio input jack <sup>9</sup>	■	■	■	■	■	■	■	■
USB port <sup>9</sup>	■	■	■	■	■	■	■	■
Steering wheel-mounted audio controls	■	■	■	■	■	■	■	■
Two speakers		■		■		■	■	
Four speakers		■		■		■	■	
SiriusXM® Radio <sup>10</sup>		■		■		■	■	
Streaming audio via Bluetooth® wireless technology <sup>10</sup>	■	■	■	■	■	■	■	■

Safety/Security	1500		2500			3500		
Driver and passenger dual-stage supplemental front air bags with seat-belt sensors <sup>18</sup>	■	■	■	■	■	■	■	■
Driver's and passenger's seat-mounted side-impact supplemental air bags <sup>18</sup>	■	■	■	■	■	■	■	■
Roof-mounted curtain side-impact air bags with rollover sensor for front outboard occupant head protection <sup>18</sup>	■	■	■	■	■	■	■	■
Vehicle Dynamic Control (VDC) <sup>19</sup> with Traction Control System (TCS)	■	■	■	■	■	■	■	■
2-wheel Active Brake Limited Slip (ABLS)	■	■	■	■	■	■	■	■
3-point ALR/ELR passenger seat belt system (ELR for driver)	■	■	■	■	■	■	■	■
Front seat belts with pretensioners and load limiters	■	■	■	■	■	■	■	■
Passenger-seat top tether anchor	■	■	■	■	■	■	■	■
Zone Body construction with front and rear crumple zones	■	■	■	■	■	■	■	■
Tire Pressure Monitoring System (TPMS) <sup>28</sup>	■	■	■	■	■	■	■	■
Vehicle Security System with alarm					■			■
Nissan Vehicle Immobilizer System					■			■

**NV® CARGO PACKAGES**

NP Navigation Package (SV, SL)
Nissan Navigation System including 5.8" color-touch screen monitor <sup>12</sup> • NissanConnect® Mobile Apps <sup>10</sup> • Nissan Voice Recognition for audio and navigation <sup>12</sup> • SiriusXM® Traffic and Travel Link <sup>10</sup>

R Rear Door Glass Package <sup>23</sup>
Rear door windows with privacy glass • Interior rearview mirror • Rear window defroster

V S Vinyl Seat Package <sup>23</sup>
Gray vinyl seats

**NISSAN ROADSIDE ASSISTANCE**

Your peace of mind is on us. For three years, your new Nissan vehicle is covered for the following:<sup>29</sup>

- Flat-tire changes
- Trip Interruption benefits
- Vehicle lockouts
- Emergency fuel delivery
- Jump starts

Follow Nissan on:



visit [NissanCommercialVehicles.com](http://NissanCommercialVehicles.com)