



Innovation  
that excites

# 2017 ROGUE SPORT™

## SWIPE FOR MORE INFO

Download the Interactive Brochure Hub app on your tablet and you'll have Rogue Sport™ and the whole Nissan lineup at your fingertips. Get the full product story enhanced with interactive demos and videos, plus complete info on trim levels, colors, accessories, and more.



Nissan Interactive Brochure Hub available free on the App Store® and Google Play.®

Or go to [NissanUSA.com](http://NissanUSA.com) to view on your desktop.



## NISSAN ROADSIDE ASSISTANCE

Your peace of mind is on us. For 36 months or 36,000 miles, whichever comes first, your new Nissan is covered for the following:¹

- Flat-tire changes
- Trip Interruption benefits
- Jump starts
- Vehicle lockouts
- Emergency fuel delivery



Innovation  
that excites

Follow Nissan on:



visit [NissanUSA.com/roguesport](http://NissanUSA.com/roguesport)

¹Roadside Assistance and Trip Interruption available during the first 36 months or 36,000 miles (whichever occurs first) after initial new vehicle delivery. Restrictions apply. See Owner's Manual for details. The App Store™ is a registered trademark of Apple, Inc. All rights reserved. Facebook® is a registered trademark of Facebook, Inc. Google Play® is a registered trademark of Google, Inc. Twitter® is a registered trademark of Twitter, Inc. YouTube® is a registered trademark of Google Inc.

PRINTED IN USA



**TAKE ON** the streets with progressive style, a commanding point of view, and available tech that helps watch out for you. Merge into traffic with confidence. Let no pothole, street-parking-only restaurant, or imposing rain cloud keep you from where you want to be. The brand-new 2017 Nissan Rogue Sport.™ Built around you, fit for **YOUR WORLD.**

See Rogue Sport™ in action at:  
[bit.ly/17roguesport](https://bit.ly/17roguesport)

Nissan Rogue Sport™ SL AWD shown in Nitro Lime.



### SIRI® EYES FREE

Unleash the power of your Siri-equipped iPhone® with Siri® Eyes Free. Ask about the weather, make calls, send texts, update your calendar, and more - at the touch of a button.¹

## STREET-SAVVY, ADVENTURE- READY



### NISSAN INTELLIGENT SAFETY SHIELD TECHNOLOGIES®

Available Nissan Intelligent Safety Shield Technologies offer you a suite of advanced systems that can help keep an eye out, watch the flow of traffic, and even step in and take action.

Forward Emergency Braking with Pedestrian Detection²

Blind Spot Warning³

Rear Cross Traffic Alert⁴

Lane Departure Warning/Prevention⁵

Moving Object Detection⁶

<sup>1</sup>Driving is serious business and requires your full attention. Only use feature when safe to do so. Compatible smartphone required. Availability of specific feature is dependent upon the phone's Bluetooth® support. Please refer to your phone Owner's Manual for details. Bluetooth® word mark and logos are owned by Bluetooth SIG, Inc. and any use of such marks by Nissan is under license. See [NissanUSA.com/bluetooth](http://NissanUSA.com/bluetooth) for details. Text rates and/or data usage may apply. Certain services, including Siri®, are provided by independent companies not within Nissan's control. Should service provider terminate/restrict service, service may be suspended or terminated without notice or liability to Nissan and/or its agents. Nissan not responsible for any equipment replacement or upgrades, or associated costs, that may be required for continued operation due to service changes. Siri® and Siri® Eyes Free are registered trademarks of Apple, Inc. <sup>2</sup>FEB with Pedestrian Detection cannot prevent accidents due to carelessness or dangerous driving techniques. It may not provide warning or braking in certain conditions. Speed and other limitations apply. See Owner's Manual for details. <sup>3</sup>Blind Spot Warning is not a substitute for proper lane change procedures. The system will not prevent contact with other vehicles or accidents. It may not detect every vehicle or object around you. <sup>4</sup>Not a substitute for proper backing procedures. May not detect all moving vehicles. Speed and other limitations apply. See Owner's Manual for details. <sup>5</sup>LDW and LDP operate only when the lane markings are clearly visible. Speed and other limitations apply. See Owner's Manual for details. <sup>6</sup>MOD cannot completely eliminate blind spots and may not detect every object. MOD operates at vehicle speeds below 5 mph. Always check surroundings and turn to look behind you before moving vehicle. <sup>7</sup>Parking aid/convenience feature. Cannot completely eliminate blind spots. May not detect every object and does not warn of moving objects. Always check surroundings and turn to look behind you before moving vehicle. <sup>8</sup>Virtual composite 360° view. <sup>9</sup>Cargo shown for display purposes only. Cargo and load capacity limited by weight and distribution. Always secure all cargo. Heavy loading of the vehicle with cargo, especially on the roof, will affect the handling and stability of the vehicle.

### INTELLIGENT ALL-WHEEL DRIVE

The available Intelligent All-Wheel Drive is so responsive, it can adapt to changing conditions 30 times faster than the blink of an eye. Snow, rain-covered pavement or tight turns, the system automatically sends power to the wheels that need it most.



Nissan Rogue Sport™ SL AWD shown in Caspian Blue with accessory Splash Guards.



### AROUND VIEW® MONITOR

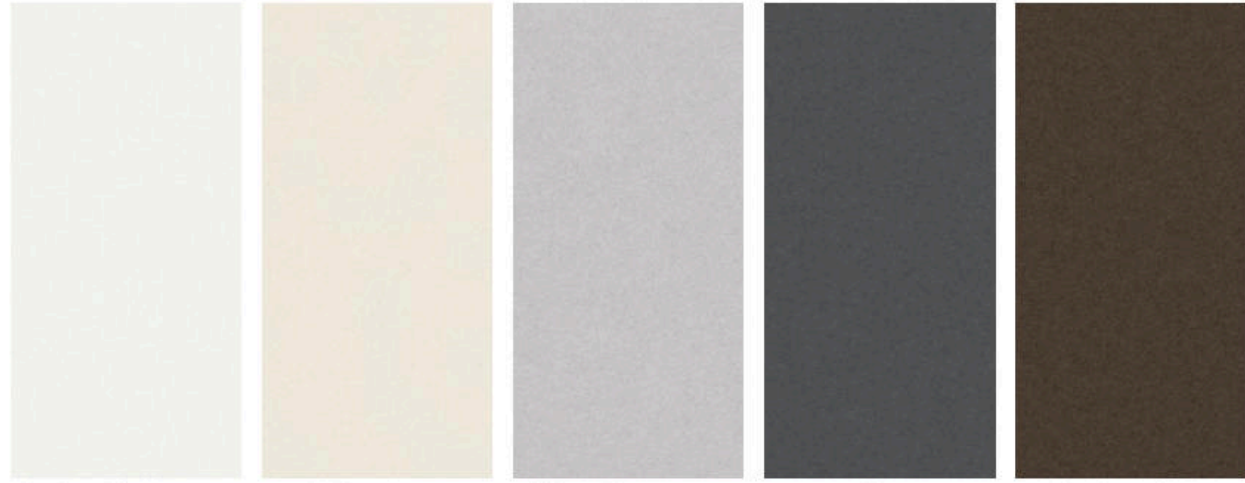
Squeeze into that spot with your pride and wheels intact. The available Around View Monitor (AVM)⁷ uses four cameras to give you a virtual composite, 360° bird's-eye view of your vehicle, with selectable split-screen close-ups of the front, rear, and curbside views.⁸



### DIVIDE-N-HIDE®

Cargo-floor panels adjust easily to provide multiple configurations, while the back seats fold down flat to accommodate larger gear. This means space for your daily essentials and weekend getaways.⁹

CHOOSE YOUR COLOR



Glacier White QAK

Pearl White¹ QAB

Brilliant Silver K23

Gun Metallic KAD

Mocha Almond CAS

	S	SV	SL
LIGHT GRAY CLOTH	<input checked="" type="checkbox"/>	<input checked="" type="checkbox"/>	<input type="checkbox"/>
LIGHT GRAY LEATHER	<input type="checkbox"/>	<input type="checkbox"/>	<input checked="" type="checkbox"/>
CHARCOAL CLOTH	<input checked="" type="checkbox"/>	<input checked="" type="checkbox"/>	<input type="checkbox"/>
CHARCOAL LEATHER	<input type="checkbox"/>	<input type="checkbox"/>	<input checked="" type="checkbox"/>



Monarch Orange¹ EBB

Palatial Ruby NBF

Nitro Lime EBA

Caspian Blue RBV

Magnetic Black G41

	S	SV	SL
LIGHT GRAY CLOTH	<input checked="" type="checkbox"/>	<input checked="" type="checkbox"/>	<input type="checkbox"/>
LIGHT GRAY LEATHER	<input type="checkbox"/>	<input type="checkbox"/>	<input checked="" type="checkbox"/>
CHARCOAL CLOTH	<input checked="" type="checkbox"/>	<input checked="" type="checkbox"/>	<input type="checkbox"/>
CHARCOAL LEATHER	<input type="checkbox"/>	<input type="checkbox"/>	<input checked="" type="checkbox"/>

Standard  
 Optional

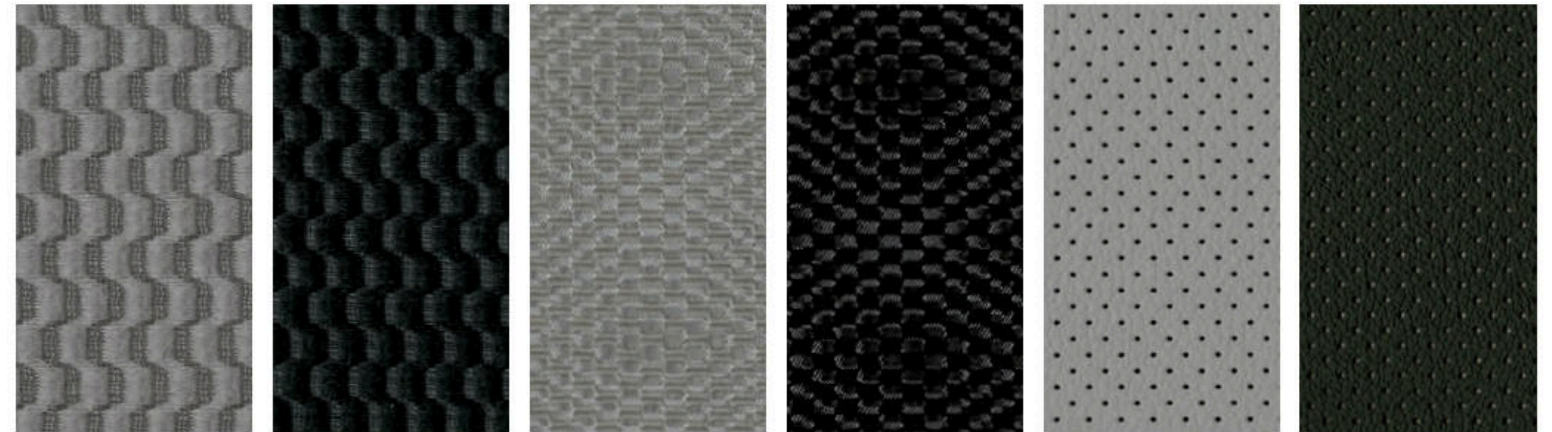
¹Extra cost option.

Nissan has taken care to ensure that the color swatches presented here are the closest possible representations of actual vehicle colors. Swatches may vary slightly due to the printing process and whether viewed in daylight, fluorescent or incandescent light. Please see the actual colors at your local Nissan dealer.

CHOOSE YOUR INTERIOR



Rogue Sport™ SL shown in Charcoal Leather with optional equipment.



Light Gray Cloth S

Charcoal Cloth S

Light Gray Cloth SV

Charcoal Cloth SV

Light Gray Leather SL

Charcoal Leather SL

## CHOOSE YOUR TRIM LEVEL

**S**

- 2.0-liter DOHC 16-valve 4-cylinder engine
- Xtronic CVT® (Continuously Variable Transmission)
- Eco Mode
- Available Intelligent All-Wheel Drive
- Active Ride Control
- Active Trace Control
- Active Engine Braking
- 16" Steel wheels with wheel covers
- P215/65R16 all-season tires
- Halogen headlights with LED signature
- LED Daytime Running Lights
- Rear spoiler
- Body-color outside door handles
- Advanced Drive-Assist® Display<sup>1,2</sup>
- Siri® Eyes Free<sup>3</sup>
- Hands-free text messaging assistant<sup>4</sup>
- Bluetooth® Hands-free Phone System and streaming audio<sup>5</sup>
- RearView Monitor<sup>6</sup>
- Rear passenger air conditioning vents
- Integrated key with remote keyless entry
- Tilt and telescoping steering column
- Cruise control with illuminated steering wheel-mounted controls
- Variable intermittent front and rear windshield wipers
- 12-volt DC power outlet
- Approach lighting
- Cargo tie-down hooks (six)<sup>7</sup>
- Cargo cover
- 6-way manual driver's seat
- 60/40 2nd-row split folding seat
- Cloth seat trim
- AM/FM/CD audio system with 5.0" color display and four speakers
- USB connection port<sup>8</sup>
- SiriusXM® Satellite Radio<sup>9</sup>
- Vehicle Dynamic Control (VDC)<sup>10</sup> with Traction Control System (TCS)
- Tire Pressure Monitoring System (TPMS) with Easy-Fill Tire Alert<sup>11,12</sup>
- Nissan Advanced Air Bag System<sup>13</sup>

### KEY AVAILABLE PACKAGE:

- Appearance Package



**SL**

### INCLUDES SV EQUIPMENT PLUS:

- 19" Aluminum-alloy wheels
- P225/45R19 all-season tires
- Leather-appointed seats
- Quick Comfort® heated front seats
- Heated leather-wrapped steering wheel
- Leather-wrapped shift knob
- Fog lights
- Power heated outside mirrors with LED turn signal indicators
- NissanConnect® with Navigation, Mobile Apps, and Services<sup>14</sup>
- 7.0" color touch-screen display
- Voice Recognition for audio and navigation<sup>15</sup>
- SiriusXM® Traffic and Travel Link<sup>9</sup>
- Around View® Monitor with Moving Object Detection<sup>16</sup>
- Remote Engine Start System with Intelligent Climate Control<sup>17</sup>
- Front driver's seatback pocket

### KEY AVAILABLE PACKAGES:

- Premium Package
- Platinum Package



**SV**

### INCLUDES S EQUIPMENT PLUS:

- 17" Aluminum-alloy wheels
- P215/60R17 all-season tires
- Automatic on/off headlights
- Outside mirrors with LED turn signal indicators
- Roof rails
- Nissan Intelligent Key® with Push Button Ignition
- Dual Zone Automatic Temperature Control (ATC)
- Divide-N-Hide® Cargo System<sup>7</sup>
- Dual illuminated visor vanity mirrors
- 6-way power driver's seat with power lumbar
- Six speakers

### KEY AVAILABLE PACKAGES:

- All-Weather Package
- Premium Package



<sup>1</sup>Driving is serious business and requires your full attention. If you have to use the feature while driving, exercise extreme caution at all times so full attention may be given to vehicle operation. <sup>2</sup>Information displayed is dependent on how vehicle is equipped. <sup>3</sup>Driving is serious business and requires your full attention. Only use feature when safe to do so. Compatible smartphone required. Availability of specific feature is dependent upon the phone's Bluetooth® support. Please refer to your phone Owner's Manual for details. Bluetooth® word mark and logos are owned by Bluetooth SIG, Inc. and any use of such marks by Nissan is under license. See [NissanUSA.com/bluetooth](http://NissanUSA.com/bluetooth) for details. Text rates and/or data usage may apply. Certain services, including Siri®, are provided by independent companies not within Nissan's control. Should service provider terminate/restrict service, service may be suspended or terminated without notice or liability to Nissan and/or its agents. Nissan not responsible for any equipment replacement or upgrades, or associated costs, that may be required for continued operation due to service changes. Siri® and Siri® Eyes Free are registered trademarks of Apple, Inc. <sup>4</sup>Use the text messaging feature after stopping your vehicle in a safe location. If you have to use the feature while driving, exercise extreme caution at all times so full attention may be given to vehicle operation. Compatible smartphone required. Text rates and/or data usage may apply. <sup>5</sup>Availability of specific features is dependent upon the phone's Bluetooth® support. Please refer to your phone Owner's Manual for details. Bluetooth® word mark and logos are owned by Bluetooth SIG, Inc., and any use of such marks by Nissan is under license. See [NissanUSA.com/bluetooth](http://NissanUSA.com/bluetooth) for details. <sup>6</sup>Parking aid/convenience feature. Cannot completely eliminate blind spots. May not detect every object and does not warn of moving objects. Always check surroundings and turn to look behind you before moving vehicle. <sup>7</sup>Cargo and load capacity limited by weight and distribution. Always secure all cargo. Heavy loading of the vehicle with cargo, especially on the roof, will affect the handling and stability of the vehicle. <sup>8</sup>Driving is serious business and requires your full attention. If you have to use the connected device while driving, exercise extreme caution at all times so full attention may be given to vehicle operation. External device not included. <sup>9</sup>Required monthly subscriptions sold separately for each available SiriusXM feature after trial period, and are continuous until you call SiriusXM to cancel. Installation costs, one-time activation fee, other fees and taxes will apply. Each SiriusXM feature availability is dependent upon vehicle model, trim level, packaging, and/or options, and may only be available in select markets. Satellite Radio U.S. service, NavWeather® service, and SiriusXM® Travel Link® services (if any of the foregoing features are equipped on vehicle) available only to those 18 or older in the 48 contiguous states and D.C. Fees and programming subject to change. Subscriptions governed by Customer Agreement available at [siriusxm.com](http://siriusxm.com). ©2017 Sirius XM Radio Inc. Sirius,® XM® and all related marks and logos are trademarks of Sirius XM Radio Inc. <sup>10</sup>VDC, which should remain on when driving except when freeing the vehicle from mud or snow, cannot prevent accidents due to abrupt steering, carelessness, or dangerous driving techniques. <sup>11</sup>TPMS is not a substitute for regular tire pressure checks. <sup>12</sup>Vehicle must be on for the Easy-Fill Tire Alert to operate. <sup>13</sup>Air bags are only a supplemental restraint system; always wear your seat belt. Even with the occupant-classification sensor, rear-facing child restraints should not be placed in the front-passenger's seat. All children 12 and under should ride in the rear seat properly secured in child restraints, booster seats, or seat belts according to their size. Air bags will only inflate in certain accidents; see your Owner's Manual for more details. <sup>14</sup>Driving is serious business. Only use NissanConnect® Services powered by SiriusXM® and NissanConnect Mobile Apps when safe to do so. NissanConnect Services and Mobile Apps availability is dependent on vehicle model, trim level, packaging, and/or options. See [NissanUSA.com/connect](http://NissanUSA.com/connect) for complete availability details. Late availability for some features. Compatible smartphone required to operate NissanConnect Mobile Apps. NissanConnect Services, including automatic crash notification and SOS, are dependent upon the telematics device being in operative condition, its ability to connect to a wireless network, compatible wireless network availability, navigation map data, and GPS satellite signal receptions, the absence of which can limit or prevent the ability to reach NissanConnect Services Customer Care or receive support. Never program while driving. GPS mapping may not be detailed in all areas or reflect current road status. You are responsible for using Remote Engine Start and Remote Horn features in accordance with any laws, rules or ordinances in effect in your vehicle's location. Remote Engine Start/Stop not available on all models. Cellular network not available in all areas and/or at all times. Technology is evolving, and changes by independent companies are not within Nissan's or Sirius XM Radio Inc.'s control. Neither Nissan nor Sirius XM are responsible for associated costs that may be required for continued operation due to cellular network termination (including equipment upgrades, if available, or roaming charges on alternative networks) or other third party changes. Should a third party provider terminate/restrict service, service may be terminated without notice and with no liability to Nissan, Sirius XM and/or their respective agents or affiliates. Certain services require a PIN for activation. Enrollment and Subscription Agreement required to receive full suite of NissanConnect Services. Trial Periods: Six (6) month trial period for Services and thirty-six (36) month trial period for Mobile Apps. Trial periods begin on your date of vehicle purchase or lease of a new Nissan, subsequently the respective paid subscription is at the then current rate to continue to receive respective services (excluding Pandora,® if Pandora app via NissanConnect is equipped on vehicle). Trial Periods are subject to change at any time and/or are subject to early termination without notice. Text rates and/or data usage may apply. See [NissanUSA.com/connect](http://NissanUSA.com/connect) for details. <sup>15</sup>Never program while driving. GPS mapping may not be detailed in all areas or reflect current road status. <sup>16</sup>Around View® Monitor (AVM) with Moving Object Detection (MOD) cannot completely eliminate blind spots and may not detect every object. MOD operates at vehicle speeds below 5 mph. Always check surroundings and turn to look behind you before moving vehicle. <sup>17</sup>State laws may apply; review local laws before using.

## CHOOSE YOUR PACKAGE



### APPEARANCE PACKAGE | S

- 17" Aluminum-alloy wheels
- P215/60R17 all-season tires



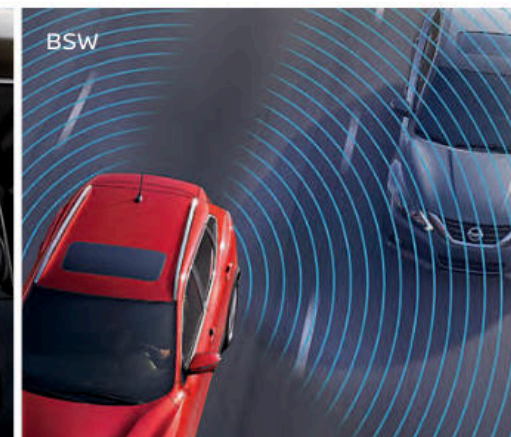
### ALL-WEATHER PACKAGE | SV

- Fog lights
- Heated outside mirrors
- Remote Engine Start System with Intelligent Climate Control<sup>1</sup>
- Quick Comfort<sup>3</sup> heated front seats
- Heated leather-wrapped steering wheel
- Leather-wrapped shift knob



### PREMIUM PACKAGE | SV

- NissanConnect<sup>®</sup> with Navigation, Mobile Apps and Services<sup>5</sup>
- Nissan Voice Recognition for audio and navigation<sup>6</sup>
- 7.0" color touch-screen display
- SiriusXM<sup>®</sup> Traffic and Travel Link<sup>7\*</sup>



- Around View<sup>®</sup> Monitor with Moving Object Detection (MOD)<sup>8</sup>
- Blind Spot Warning (BSW)<sup>3</sup>
- Rear Cross Traffic Alert (RCTA)<sup>4</sup>



### PREMIUM PACKAGE | SL

- Power Sliding Moonroof with one-touch open/close and tilt feature
- LED low- and high-beam headlights
- High Beam Assist

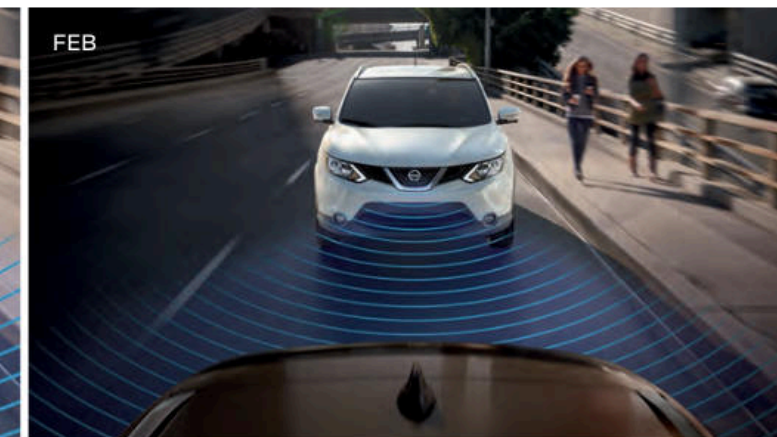


- Forward Emergency Braking (FEB)<sup>2</sup>
- Blind Spot Warning (BSW)<sup>3</sup>
- Rear Cross Traffic Alert (RCTA)<sup>4</sup>



### PLATINUM PACKAGE | SL

- Intelligent Cruise Control (ICC)<sup>9</sup>
- Lane Departure Warning (LDW)<sup>10</sup>



- Lane Departure Prevention (LDP)<sup>10</sup>
- Forward Emergency Braking (FEB) with Pedestrian Detection<sup>11</sup>

<sup>1</sup>State laws may apply; review local laws before using. <sup>2</sup>FEB cannot prevent accidents due to carelessness or dangerous driving techniques. It may not provide warning or braking in certain conditions. Speed and other limitations apply. See Owner's Manual for details. <sup>3</sup>Blind Spot Warning is not a substitute for proper lane change procedures. The system will not prevent contact with other vehicles or accidents. It may not detect every vehicle or object around you. <sup>4</sup>Not a substitute for proper backing procedures. May not detect all moving vehicles. Speed and other limitations apply. See Owner's Manual for details. <sup>5</sup>Driving is serious business. Only use NissanConnect<sup>®</sup> Services powered by SiriusXM<sup>®</sup> and NissanConnect Mobile Apps when safe to do so. NissanConnect Services and Mobile Apps availability is dependent on vehicle model, trim level, packaging, and/or options. See [NissanUSA.com/connect](http://NissanUSA.com/connect) for complete availability details. Late availability for some features. Compatible smartphone required to operate NissanConnect Mobile Apps. NissanConnect Services, including automatic crash notification and SOS, are dependent upon the telematics device being in operative condition, its ability to connect to a wireless network, compatible wireless network availability, navigation map data, and GPS satellite signal receptions, the absence of which can limit or prevent the ability to reach NissanConnect Services Customer Care or receive support. Never program while driving. GPS mapping may not be detailed in all areas or reflect current road status. You are responsible for using Remote Engine Start and Remote Horn features in accordance with any laws, rules or ordinances in effect in your vehicle's location. Remote Engine Start/Stop not available on all models. Cellular network not available in all areas and/or at all times. Technology is evolving, and changes by independent companies are not within Nissan's or Sirius XM Radio Inc.'s control. Neither Nissan nor Sirius XM are responsible for associated costs that may be required for continued operation due to cellular network termination (including equipment upgrades, if available, or roaming charges on alternative networks) or other third party changes. Should a third party provider terminate/restrict service, service may be terminated without notice and with no liability to Nissan, Sirius XM and/or their respective agents or affiliates. Certain services require a

PIN for activation. Enrollment and Subscription Agreement required to receive full suite of NissanConnect Services. Trial Periods: Six (6) month trial period for Services and thirty-six (36) month trial period for Mobile Apps. Trial periods begin on your date of vehicle purchase or lease of a new Nissan; subsequently the respective paid subscription is at the then current rate to continue to receive respective services (excluding Pandora, if Pandora app via NissanConnect is equipped on vehicle). Trial Periods are subject to change at any time and/or are subject to early termination without notice. Text rates and/or data usage may apply. See [NissanUSA.com/connect](http://NissanUSA.com/connect) for details. <sup>6</sup>Never program while driving. GPS mapping may not be detailed in all areas or reflect current road status. <sup>7</sup>Required monthly subscriptions sold separately for each available SiriusXM feature after trial period, and are continuous until you call SiriusXM to cancel. Installation costs, one-time activation fee, other fees and taxes will apply. Each SiriusXM feature availability is dependent upon vehicle model, trim level, packaging, and/or options, and may only be available in select markets. Satellite Radio U.S. service, NavWeather<sup>®</sup> service, and SiriusXM<sup>®</sup> Travel Link<sup>®</sup> services (if any of the foregoing features are equipped on vehicle) available only to those 18 or older in the 48 contiguous states and D.C. Fees and programming subject to change. Subscriptions governed by Customer Agreement available at [siriusxm.com](http://siriusxm.com). ©2017 Sirius XM Radio Inc. Sirius<sup>®</sup> XM<sup>®</sup> and all related marks and logos are trademarks of Sirius XM Radio Inc. <sup>8</sup>Around View<sup>®</sup> Monitor (AVM) with Moving Object Detection (MOD) cannot completely eliminate blind spots and may not detect every object. MOD operates at vehicle speeds below 5 mph. Always check surroundings and turn to look behind you before moving vehicle. <sup>9</sup>Intelligent Cruise Control is not a collision avoidance system or warning device. Designed to use limited braking. Failure to apply the brakes could result in an accident. <sup>10</sup>LDW and LDP operate only when the lane markings are clearly visible. Speed and other limitations apply. See Owner's Manual for details. <sup>11</sup>FEB with pedestrian detection is not a replacement for responsible driving. May not provide warning or braking in certain conditions. Speed and other limitations apply. See Owner's Manual for details.

CHOOSE YOUR ACCESSORIES



Every Genuine Nissan Accessory is custom-fit, custom-designed, and durability-tested. Each one is also backed by Nissan's 3-year/36,000-mile (whichever occurs first) limited warranty (if installed by dealer at the time of purchase).<sup>1</sup> Plus, they can be financed when installed by the dealer at the time of purchase.

- A. Dual Rear USB Rapid Charging Ports**  
Charge two devices up in a flash.
- B. Illuminated Kick Plates**  
Step inside and light 'em up.
- C. Chrome Front Lip Finisher**  
Cut through the air in stunning style.
- D. All-Season Floor Mats**  
Stepping in from the rain or snow? We got you covered.
- E. Nissan 4G WiFi & Apps<sup>2</sup>**  
Connected devices. Happy passengers.
- F. Interior Accent Lighting**  
Add a warm glow to the mood.
- G. Fog Lights**  
Distinct look. Increased visibility.
- H. 19" Aluminum-alloy Wheels**  
Cruise with some attitude.

Additional Accessories:

- Clear Film Hood Protector
- Wireless Smartphone Charger
- All-season Cargo Area Protector (1-piece and 2-piece)<sup>3</sup>
- Carpeted Floor Mats
- Carpeted Cargo Area Protector (1-piece and 2-piece)<sup>3</sup>
- Hatch Tent
- Cargo Net
- Frameless Auto-dimming Mirror with Universal Garage-door Opener
- Vehicle Impact Sensor
- And More

**GENUINE NISSAN ACCESSORIES**  
**TURN BRAND-NEW INTO ALL YOU**

For more information and to shop online for Rogue Sport™ Genuine Nissan Accessories, go to [bit.ly/17roguesport-estore](http://bit.ly/17roguesport-estore)



To see Genuine Nissan Accessories in action, go to [bit.ly/17roguesport\\_gna](http://bit.ly/17roguesport_gna)

**Nissan Rogue Sport™ SV** shown in Nitro Lime with 17" Aluminum-alloy Wheels, Roof Rail Crossbars, Side Window Deflectors, Chrome Rear Glass Finisher, Chrome Rear Bumper Protector, Door Side Sill Strips, External Ground Lighting, and Splash Guards.

<sup>1</sup>Genuine Nissan Accessories are covered by Nissan's Limited Warranty on Genuine Nissan Replacement Parts, Genuine NISMO™ S-Tune Parts, and Genuine Nissan Accessories for the longer of 12 months/12,000 miles (whichever occurs first) or the remaining period under the 3-year/36,000-mile (whichever occurs first) Nissan New Vehicle Limited Warranty. Terms and conditions apply. See Warranty Information Booklet for details. <sup>2</sup>Driving is serious business and requires your full attention. Only use Nissan WiFi and Apps Services powered by Autonet Mobile when safe to do so. Only available on select models. See [Nissanwifi.com](http://Nissanwifi.com) for complete availability details. Never program while driving. GPS mapping may

not be detailed in all areas or reflect current road status. Nissan WiFi and Apps Services requires compatible cellular network provided by Autonet, navigation map data, and GPS satellite signal receptions, the absence of which can limit or prevent the ability of the Nissan WiFi and Apps Services are not within Nissan's control. Should a third party or Autonet Mobile terminate or make changes that impact the service, service may be terminated without notice and Nissan shall have no liability. The Apps Services requires compatible smartphone or personal computer, not included with vehicle. Enrollment and Subscription Agreement is required to receive full suite of Nissan WiFi and Apps Services through Autonet Mobile. The 90 day trial period for Apps Services begins when the unit is registered with Autonet Mobile; subsequently the respective paid subscription for WiFi is at the then current rate to continue to receive respective services. Terms and conditions of Subscription Agreement then apply. Text rates and/or data usage may apply. <sup>3</sup>Cargo and load capacity limited by weight and distribution. Always secure all cargo. Heavy loading of the vehicle with cargo, especially on the roof, will affect the handling and stability of the vehicle.

## SPECIFICATIONS

Engine	S	SV	SL
MR20DD – 2.0-liter DOHC 16-valve 4-cylinder	■	■	■
— Horsepower – 141 hp @ 6,000 rpm			
— Torque – 147 lb-ft @ 4,400 rpm			
Continuously Variable Valve Timing Control System (CVTCS) on Intake and exhaust valves	■	■	■
Nissan Direct Ignition System with double platinum-tipped spark plugs	■	■	■
Eco Mode	■	■	■

Drivetrain	S	SV	SL
Front-Wheel Drive (FWD)	■	■	■
Intelligent All-Wheel Drive (AWD)	□	□	□
Hill start assist	■	■	■
Xtronic CVT® (Continuously Variable Transmission)	■	■	■

Brakes	S	SV	SL
4-wheel vented disc brakes	■	■	■
4-wheel Anti-lock Braking System (ABS)	■	■	■
Electronic Brake force Distribution (EBD)	■	■	■
Brake Assist	■	■	■
Active Trace Control	■	■	■
Active Engine Braking	■	■	■
Active Ride Control	■	■	■

Suspension/Chassis Bracing/Steering	S	SV	SL
Independent strut front suspension	■	■	■
Independent multi-link rear suspension	■	■	■
Front and rear stabilizer bars	■	■	■
Vehicle-speed-sensitive electric power steering with Sport Mode	■	■	■

Wheels/Tires	S	SV	SL
16" x 6.5" steel wheels with wheel covers	■		
17" x 7.0" aluminum-alloy wheels	A	■	
19" x 7.0" aluminum-alloy wheels			■
P215/65R16 all-season tires	■		
P215/60R17 all-season tires	A	■	
P225/45R19 all-season tires			■

Exterior Features	S	SV	SL
Halogen headlights with LED signature	■	■	■
LED Daytime Running Lights	■	■	■
LED low- and high-beam headlights			P2
Automatic on/off headlights			■
Fog lights		AW	■
Body-color outside door handles	■	■	■
Body-color power outside mirrors	■		
Body-color power outside mirrors with LED turn signal indicators		■	
Body-color power heated outside mirrors with LED turn signal indicators		AW	■
Approach lighting	■	■	■
Roof rails		■	■

■ Standard    A Part of S Appearance Package    P1 Part of SV Premium Package  
□ Optional    AW Part of SV All-Weather Package    P2 Part of SL Premium Package

Exterior Features (continued)	S	SV	SL
Rear spoiler	■	■	■
Black wheel arch moldings and rocker panels	■	■	■
Power Sliding Moonroof with one-touch open/close and tilt feature			P2
UV-reducing solar glass	■	■	■

Comfort/Convenience	S	SV	SL
Advanced Drive-Assist® Display	■	■	■
NissanConnect® with Navigation, Mobile Apps, and Services <sup>1</sup>		P1	■
7.0" color touch-screen display and Voice Recognition for navigation and audio <sup>2</sup>		P1	■
SiriusXM® Traffic and Travel Link <sup>2,3</sup>		P1	■
Siri® Eyes Free <sup>4</sup>	■	■	■
Hands-free text messaging assistant <sup>5</sup>	■	■	■
Bluetooth® Hands-free Phone System <sup>6</sup>	■	■	■
RearView Monitor		■	
Around View® Monitor		P1	■
Dual Zone Automatic Temperature Control (ATC)		■	■
Rear passenger air conditioning vents	■	■	■
Power windows with driver's one-touch auto-up/down feature	■	■	■
Power door locks with auto-locking feature	■	■	■
Integrated Key with remote keyless entry	■		
Nissan Intelligent Key® with Push Button Ignition		■	■
Remote Engine Start System with Intelligent Climate Control <sup>7</sup>		AW	■
High Beam Assist (HBA)			P2
Tilt and telescoping steering column	■	■	■
Cruise control with illuminated steering wheel-mounted controls	■	■	■
Intelligent Cruise Control (ICC)			P3
Variable intermittent windshield wipers	■	■	■
Intermittent rear window wiper	■	■	■
12-volt DC power outlet	■	■	■
Sun visors with vanity mirrors and extensions	■		
Dual illuminated visor vanity mirrors		■	■
Overhead LED map lights	■	■	■
Overhead sunglasses storage	■	■	■
Front center console	■	■	■
Rear-seat center armrest	■	■	■
Front driver's seatback pocket			■
Four cup holders and four bottle holders	■	■	■
Cargo tie-down hooks (six)	■	■	■
Divide-N-Hide® Cargo System	■	■	■
Cargo cover	■	■	■

Seating/Appointments	S	SV	SL
6-way manual driver's seat	■		
6-way power driver's seat with power lumbar		■	■
4-way manual front-passenger's seat	■	■	■
60/40 2nd-row split folding seat	■	■	■
Cloth seat trim	■	■	■

P3 Part of SL Platinum Package

Seating/Appointments (continued)	S	SV	SL
Leather-appointed seats			■
Quick Comfort® heated front seats		AW	■
Heated leather-wrapped steering wheel		AW	■
Leather-wrapped shift knob		AW	■

Audio/Entertainment	S	SV	SL
AM/FM/CD audio system with 5.0" color display	■	■	
Four speakers	■		
Six speakers		■	■
MP3/WMA CD playback capability	■	■	■
Auxiliary audio input jack <sup>8</sup>	■	■	■
USB connection port <sup>8</sup>	■	■	■
Streaming audio via Bluetooth® wireless technology <sup>6</sup>	■	■	■
SiriusXM® Satellite Radio <sup>3</sup>	■	■	■
Radio Data System (RDS)	■	■	■
Speed-sensitive volume control		■	■
Illuminated steering wheel-mounted audio controls	■	■	■

Safety/Security	S	SV	SL
Nissan Advanced Air Bag System with dual-stage supplemental front air bags with seat belt and occupant-classification sensors	■	■	■
Driver and front-passenger seat-mounted side-impact supplemental air bags	■	■	■
Roof-mounted curtain supplemental air bags with rollover sensor for side-impact head protection for front and rear-seat outboard occupants	■	■	■
Vehicle Dynamic Control (VDC) with Traction Control System (TCS)	■	■	■
Forward Emergency Braking (FEB)			P2
Forward Emergency Braking (FEB) with Pedestrian Detection			P3
Blind Spot Warning (BSW)		P1	P2
Rear Cross Traffic Alert (RCTA)		P1	P2
Lane Departure Warning (LDW) and Lane Departure Prevention (LDP)			P3
Moving Object Detection (MOD)		P1	■
3-point ELR passenger seat belt system	■	■	■
LATCH System (Lower Anchors and Tethers for Children)	■	■	■
Tire Pressure Monitoring System (TPMS) with Easy-Fill Tire Alert	■	■	■

<sup>1</sup>Driving is serious business. Only use NissanConnect® Services powered by SiriusXM® and NissanConnect Mobile Apps when safe to do so. NissanConnect Services and Mobile Apps availability is dependent on vehicle model, trim level, packaging, and/or options. See [NissanUSA.com/connect](#) for complete availability details. Late availability for some features. Compatible smartphone required to operate NissanConnect Mobile Apps. NissanConnect Services, including automatic crash notification and SOS, are dependent upon the telematics device being in operative condition, its ability to connect to a wireless network, compatible wireless network availability, navigation map data, and GPS satellite signal receptions, the absence of which can limit or prevent the ability to reach NissanConnect Services Customer Care or receive support. Never program while driving. GPS mapping may not be detailed in all areas or reflect current road status. You are responsible for using Remote Engine Start and Remote Horn features in accordance with any laws, rules or ordinances in effect in your vehicle's location. Remote Engine Start/Stop not available on all models. Cellular network not available in all areas and/or at all times. Technology is evolving, and changes by independent companies are not within Nissan's or Sirius XM Radio Inc.'s control. Neither Nissan nor Sirius XM are responsible for associated costs that may be required for continued operation due to cellular network termination (including equipment upgrades, if available, or roaming charges on alternative networks) or other third party changes. Should a third party provider terminate/restrict service, service may be terminated without notice and with no liability to Nissan, Sirius XM and/or their respective agents or affiliates. Certain services require a PIN for activation. Enrollment and Subscription Agreement required to receive full suite of NissanConnect Services. Trial Periods: Six (6) month trial period for Services and

## CAPACITIES/MPG

Capacities	
Seating capacity	5
Interior passenger volume without moonroof (cu. ft.)	96.0
Interior passenger volume with moonroof (cu. ft.)	94.3
Cargo capacity with 2nd row upright – S/SV/SL (cu. ft.)	22.9/19.9/19.9 (20.0 with moonroof)
Cargo capacity with rear seats folded down – S/SV/SL (cu. ft.)	61.1/53.3/53.3 (53.0 with moonroof)
Fuel tank (gals.)	14.5

2017 EPA Fuel Economy Estimates	
<b>City/Hwy/Combined MPG</b>	
AWD	24/30/27
FWD	25/32/28
— Actual mileage may vary with driving conditions — use for comparison only.	

thirty-six (36) month trial period for Mobile Apps. Trial periods begin on your date of vehicle purchase or lease of a new Nissan; subsequently the respective paid subscription is at the then current rate to continue to receive respective services (excluding Pandora,® if Pandora app via NissanConnect is equipped on vehicle). Trial Periods are subject to change at any time and/or are subject to early termination without notice. Text rates and/or data usage may apply. See [NissanUSA.com/connect](#) for details. <sup>2</sup>Never program while driving. GPS mapping may not be detailed in all areas or reflect current road status. <sup>3</sup>Required monthly subscriptions sold separately for each available SiriusXM feature after trial period, and are continuous until you call SiriusXM to cancel. Installation costs, one-time activation fee, other fees and taxes will apply. Each SiriusXM feature availability is dependent upon vehicle model, trim level, packaging, and/or options, and may only be available in select markets. Satellite Radio U.S. service, NavWeather® service, and SiriusXM Travel Link® services (if any of the foregoing features are equipped on vehicle) available only to those 18 or older in the 48 contiguous states and D.C. Fees and programming subject to change. Subscriptions governed by Customer Agreement available at [siriusxm.com](#). ©2017 Sirius XM Radio Inc. Sirius,® XM® and all related marks and logos are trademarks of Sirius XM Radio Inc. <sup>4</sup>Driving is serious business and requires your full attention. Only use feature when safe to do so. Compatible smartphone required. Availability of specific feature is dependent upon the phone's Bluetooth® support. Please refer to your phone Owner's Manual for details. Bluetooth® word mark and logos are owned by Bluetooth SIG, Inc. and any use of such marks by Nissan is under license. See [NissanUSA.com/bluetooth](#) for details. Text rates and/or data usage may apply. Certain services, including Siri,® are provided by independent companies not within Nissan's control. Should service provider terminate/restrict service, service may be suspended or terminated without notice or liability to Nissan and/or its agents. Nissan not responsible for any equipment replacement or upgrades, or associated costs, that may be required for continued operation due to service changes. Siri® and Siri® Eyes Free are registered trademarks of Apple, Inc. <sup>5</sup>Use the text messaging feature after stopping your vehicle in a safe location. If you have to use the feature while driving, exercise extreme caution at all times so full attention may be given to vehicle operation. Compatible smartphone required. Text rates and/or data usage may apply. <sup>6</sup>Availability of specific features is dependent upon the phone's Bluetooth® support. Please refer to your phone Owner's Manual for details. Bluetooth® word mark and logos are owned by Bluetooth SIG, Inc. and any use of such marks by Nissan is under license. See [NissanUSA.com/bluetooth](#) for details. <sup>7</sup>State laws may apply; review local laws before using. <sup>8</sup>Driving is serious business and requires your full attention. If you have to use the connected device while driving, exercise extreme caution at all times so full attention may be given to vehicle operation. External device not included. This brochure is intended for general descriptive and informational purposes only. It is subject to change and does not constitute an offer, representation or warranty (express or implied) by Nissan North America, Inc. Interested parties should confirm the accuracy of any information in this brochure as it relates to a vehicle directly with Nissan North America, Inc., before relying on it to make a purchase decision. Nissan North America, Inc., reserves the right to make changes, at any time, without prior notice, in prices, colors, materials, equipment, specifications, and models and to discontinue models or equipment. Due to continuous product development and other pre- and post-production factors, actual vehicle, materials and specifications may vary from this brochure. Some vehicles shown with optional equipment. See the actual vehicle for complete accuracy. Availability and delivery times for particular models or equipment may vary. Specifications, options and accessories may differ in Hawaii, U.S. territories and other countries. For additional information on availability, options or accessories, see your Nissan dealer or contact Nissan North America, Inc. At [NissanUSA.com](#), you'll find virtual product demonstrations, a way to "build your own Nissan," a dealer locator, and more information about key Nissan support services. Or if you'd prefer, call 1-800-NISSAN-3 for answers to specific questions about Rogue Sport® or any other Nissan vehicle. The Nissan names, logos, product names, feature names, and slogans are trademarks owned by or licensed to Nissan Motor Co. Ltd. and/or its North American subsidiaries. Other trademarks and trade names are those of their respective owners. **Always wear your seat belt, and please don't drink and drive.** ©2017 Nissan North America, Inc. 1719203-N-05/17-60K-CGL