

NISSAN INTELLIGENT MOBILITY™

Nissan Intelligent Mobility guides everything we do. We're using new technologies to transform cars from mere driving machines into assistants. Together the journey is more confident, connected, and exciting. Whether it's cars that assist in the driving task, or highways that charge your EV as you go along, it's all in the very near future. And it's a future already taking shape in the Nissan you drive today.

SEE ROGUE SPORT™ COME TO LIFE

Go to NissanUSA.com and find an interactive brochure for Rogue Sport and every Nissan in the lineup. Available on desktop, smartphone, or tablet, it's the full product story – including demos, videos, and complete info on trims, colors, and accessories.



Innovation
that excites

2019 ROGUE SPORT™



¹Automatic Emergency Braking with Pedestrian Detection cannot prevent all collisions and may not provide warning or braking in all conditions. Driver should monitor traffic conditions and brake as needed to prevent collisions. See Owner's Manual for safety information. ²ProPILOT Assist cannot prevent collisions. Always monitor traffic conditions and keep both hands on the steering wheel. See Owner's Manual for safety information. ³Availability of features vary by vehicle model year, model, trim level, packaging, and options. ⁴Available feature. ⁵Rear Automatic Braking cannot prevent all collisions and may not provide warning or braking in all conditions. Driver should monitor traffic conditions and brake as needed to prevent collisions. See Owner's Manual for safety information. ⁶Blind Spot Warning cannot prevent collisions and may not detect every object or warn in all situations. Driver should always turn and look before changing lanes. See Owner's Manual for safety information. ⁷Rear Cross Traffic Alert may not detect all vehicles. See Owner's Manual for safety information. ⁸Intelligent Lane Intervention and Lane Departure Warning only operate when lane markings are detectable. See Owner's Manual for safety information. ⁹Available services/features may be shown. Compatible connected device may be required. Only use services/features and device when safe and legal to do so. Subject to GPS and wireless network availability and connection, and system/technology limitations. Text rates/data usage/subscription may apply. Some services/features provided by companies not within Nissan or its partners' or agents' control and may be discontinued at any time. For more information, see dealer, Owner's Manual, or NissanUSA.com/connect/important-information. ¹⁰Intelligent Around View® Monitor cannot eliminate blind spots and may not detect every object. Driver should always turn and check surroundings before driving. See Owner's Manual for safety information. ¹¹Extra cost option. ¹²Automatic Emergency Braking cannot prevent all collisions and may not provide warning or braking in all conditions. Driver should monitor traffic conditions and brake as needed to prevent collisions. See Owner's Manual for safety information. ¹³Intelligent Trace Control cannot prevent collisions or loss of control. Driver should remain in control of vehicle at all times. See Owner's Manual for safety information. ¹⁴Driving is serious business and requires your full attention. If you have to use the feature while driving, exercise extreme caution at all times so full attention may be given to vehicle operation. ¹⁵Information displayed is dependant on how vehicle is equipped. ¹⁶Driving is serious business and requires your full attention. If you have to use the connected device while driving, exercise extreme caution at all times so full attention may be given to vehicle operation. ¹⁷Use Hands Free Text Messaging when parked in a safe location. If you must use while driving, monitor traffic conditions and keep both hands on the steering wheel to prevent collisions. Compatible device required. Message and data rates may apply. ¹⁸RearView Monitor may not detect every object and does not eliminate blind spots or warn of moving objects. See Owner's Manual for safety information. ¹⁹Cargo shown for display purposes only. Cargo and load capacity limited by weight and distribution. Always secure cargo. Heavy loading of the vehicle with cargo, especially on the roof, will affect the handling and stability of the vehicle. ²⁰See Owner's Manual for safety information. ²¹Vehicle Dynamic Control cannot prevent collisions due to abrupt steering, carelessness, or dangerous driving techniques. It should remain on when driving, except when freeing the vehicle from mud or snow. See Owner's Manual for safety information. ²²Tire Pressure Monitoring System is not a substitute for regular tire pressure checks. See Owner's Manual for safety information. ²³Vehicle must be on for the Easy-Fill Tire Alert to operate. ²⁴Air bags are only a supplemental restraint system. Always wear your seat belt. Rear-facing child restraints should not be placed in the front-passenger's seat. All children 12 and under should ride in the rear seat properly secured in child restraints, booster seats, or seat belts according to their size. Air bags will only inflate in certain accidents. See Owner's Manual for safety information. ²⁵Sonar System may not detect every object. Driver should always check surroundings before driving. See Owner's Manual for safety information. ²⁶Intelligent Cruise Control uses limited braking and is not a collision avoidance or warning system. Driver should monitor traffic conditions and brake as needed to prevent collisions. See Owner's Manual for safety information. ²⁷Never program while driving. GPS mapping may not be detailed in all areas or reflect current road status. ²⁸State laws may apply. Review before using. ²⁹Genuine Nissan Accessories are covered by Nissan's Limited Warranty on Genuine Nissan Replacement Parts, Genuine NISMO® S-Tune Parts, and Genuine Nissan Accessories for the longer of 12 months/12,000 miles (whichever occurs first) or the remaining period under the 3-year/36,000-mile (whichever occurs first) Nissan New Vehicle Limited Warranty. Terms and conditions apply. See dealer, Warranty Information Booklet, or parts.NissanUSA.com for details. ³⁰Brake Assist cannot prevent all collisions and may not provide warning or braking in all conditions. Driver should monitor traffic conditions and brake as needed to prevent collisions. See Owner's Manual for safety information. ³¹2018 EPA Fuel Economy Estimates 25 City, 32 Highway for Front-Wheel Drive models. 2019 EPA data not available at time of publication. Actual mileage may vary with driving conditions. Use for comparison only. ³²For a period of 36 months/36,000 miles from the date the vehicle is delivered to the first retail buyer or otherwise put into use, whichever is earlier. Android Auto™ is a trademark of Google LLC. Apple CarPlay®, Siri® and Siri® Eyes Free are registered trademarks of Apple, Inc. Bluetooth® word mark and logos are owned by Bluetooth SIG, Inc., and any use of such marks by Nissan is under license. Bose® is a registered trademark of The Bose Corporation. Facebook® is a registered trademark of Facebook, Inc. HomeLink® is a registered trademark of Genex Corporation. iPhone® is a registered trademark of Apple, Inc. All rights reserved. iPhone® or other external device not included. The Sirius®, XM®, and SiriusXM® names and all related marks and logos are trademarks of Sirius XM Radio Inc. Twitter® is a registered trademark of Twitter, Inc. YouTube® is a registered trademark of Google LLC. This brochure is intended for general descriptive and informational purposes only. It is subject to change and does not constitute an offer, representation or warranty (express or implied) by Nissan North America, Inc. Interested parties should confirm the accuracy of any information in this brochure as it relates to a vehicle directly with Nissan North America, Inc., before relying on it to make a purchase decision. Nissan North America, Inc., reserves the right to make changes, at any time, without prior notice, in prices, colors, materials, equipment, specifications, and models and to discontinue models or equipment. Due to continuous product development and other pre- and post-production factors, actual vehicle, materials and specifications may vary from this brochure. Some vehicles shown with optional equipment. See the actual vehicle for complete accuracy. Availability and delivery times for particular models or equipment may vary. Specifications, options and accessories may differ in Hawaii, U.S. territories and other countries. For additional information on availability, options or accessories, see your Nissan dealer or contact Nissan North America, Inc. at NissanUSA.com, you'll find virtual product demonstrations, a way to "build your own Nissan," a dealer locator, and more information about key Nissan support services. Or if you'd prefer, call 1-800-NISSAN-3 for answers to specific questions about Rogue Sport™ or any other Nissan vehicle. The Nissan names, logos, product names, feature names, and slogans are trademarks owned by or licensed to Nissan Motor Co. Ltd. and/or its North American subsidiaries. Other trademarks and trade names are those of their respective owners. **Always wear your seat belt, and please drive responsibly.** ©2018 Nissan North America, Inc. 1922541-N-10/18-80K-CGI



Conquer the city with progressive style, a commanding point of view, and available advanced safety tech like Automatic Emergency Braking with Pedestrian Detection.¹ Merge into traffic with confidence. Let no pothole, street-parking-only restaurant, or imposing rain cloud keep you from where you want to be. The 2019 Nissan Rogue Sport.[™] Tech that moves you.

See Rogue Sport[™] in action at:
bit.ly/roguesport

Nissan Rogue Sport[™] SL AWD shown in Scarlet Ember Tintcoat.

HELPS KEEP YOU
CENTERED IN
GENTLE CURVES

MAINTAINS YOUR
PRESET SPEED AND
DISTANCE

CAN EVEN
COME TO A
COMPLETE STOP



NISSAN ProPILOT ASSIST

Feel free to let go of driving stress. With Nissan ProPILOT Assist, Rogue Sport™ helps out with daily highway driving - following the car ahead at a preset distance, or helping keep you centered in your lane. It can even bring your Rogue Sport to a full stop based on the traffic flow, and can bring you back up to speed when traffic starts moving again.²

NISSAN INTELLIGENT MOBILITY™



NISSAN SAFETY SHIELD® 360

Nissan Intelligent Mobility reinvents the way you move. You'll drive with greater awareness, and even get an assist when you need it. Standard on Rogue Sport trims SV and above, these advanced safety features help monitor in front, behind, and all around you for 360° of confidence.³

Automatic Emergency Braking with Pedestrian Detection¹

Rear Automatic Braking^{4,5}

Blind Spot Warning⁶

Rear Cross Traffic Alert⁷

Lane Departure Warning⁸

High Beam Assist



INTELLIGENT ALL-WHEEL DRIVE

The available Intelligent All-Wheel Drive is so responsive, it can adapt to changing conditions 30 times faster than the blink of an eye. Snow, rain-covered pavement or tight turns, the system automatically sends power to the wheels that need it most.

Nissan Rogue Sport™ SL AWD shown in Caspian Blue Metallic with accessory Splash Guards.

SEAMLESS CONNECTIVITY



Available Apple CarPlay® takes many of the things you want to do with your compatible iPhone® while driving and puts them right on your car's built-in display. You can use Siri,⁹ get directions, make calls, send and receive messages, listen to music, and more, all hands-free.⁹

android auto

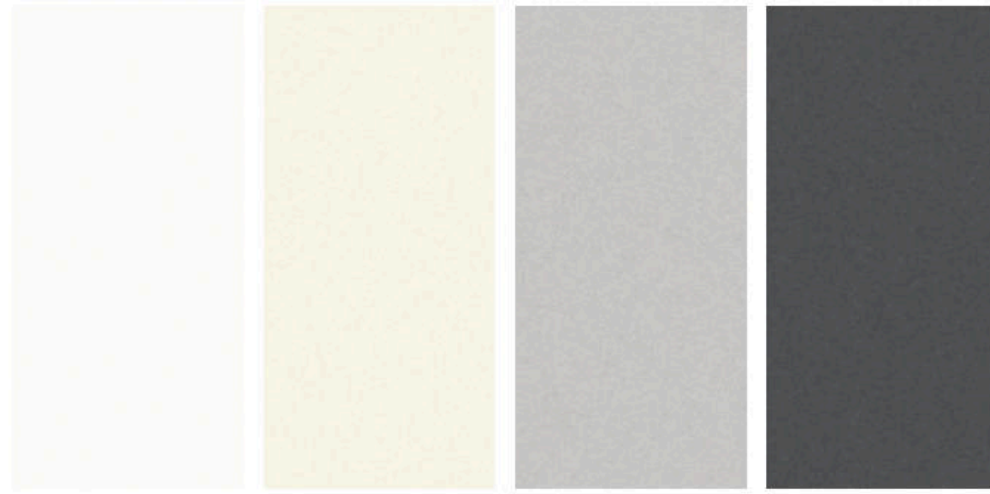
Android Auto™ was designed with safety in mind, with larger touch targets, a simplified interface, and easy-to-use voice actions. It's designed to integrate with your Rogue Sport, minimizing distraction so you can stay focused on the road.⁹



INTELLIGENT AROUND VIEW® MONITOR

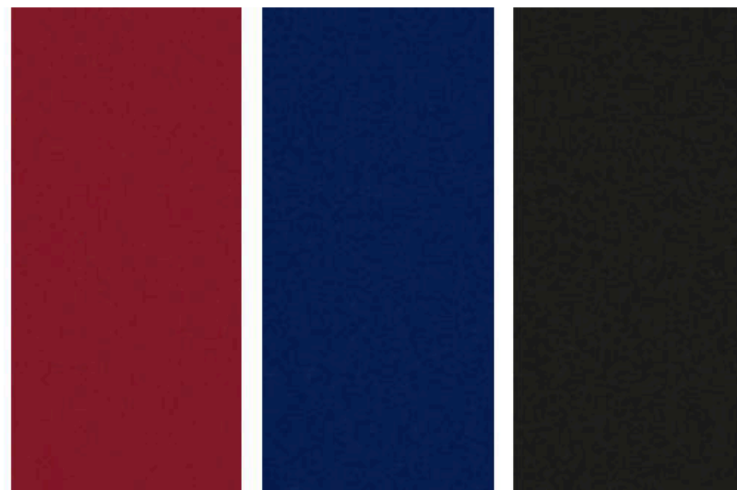
The available Intelligent Around View Monitor helps you squeeze into that spot with your pride and wheels intact. It also gives you an on-screen heads-up when it detects moving objects near your vehicle. We're looking at you, shopping cart.¹⁰

CHOOSE YOUR COLOR



Glacier White Pearl White TriCoat¹ Brilliant Silver Metallic Gun Metallic

	S	SV	SL
CHARCOAL CLOTH	■		
PREMIUM LIGHT GRAY CLOTH		■	
PREMIUM CHARCOAL CLOTH			■
LIGHT GRAY LEATHER			■
CHARCOAL LEATHER			■



Scarlet Ember Tintcoat Caspian Blue Metallic Magnetic Black Pearl

	S	SV	SL
CHARCOAL CLOTH	■		
PREMIUM LIGHT GRAY CLOTH		■	
PREMIUM CHARCOAL CLOTH			■
LIGHT GRAY LEATHER			■
CHARCOAL LEATHER			■

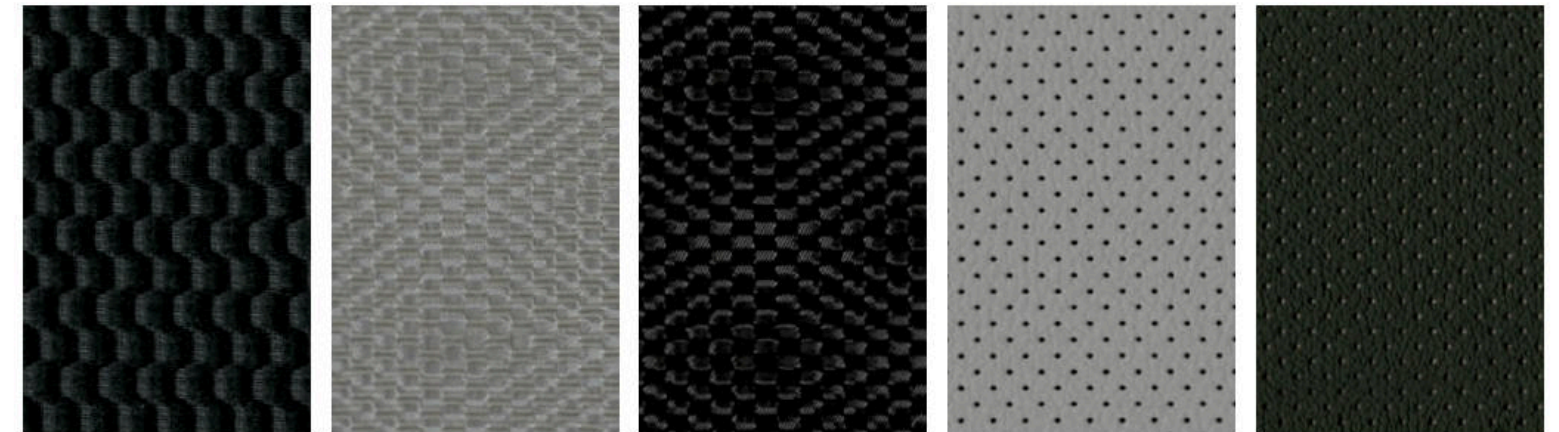
■ Standard

Nissan has taken care to ensure that the color swatches presented here are the closest possible representations of actual vehicle colors. Swatches may vary slightly due to the printing process and whether viewed in daylight, fluorescent or incandescent light. Please see the actual colors at your dealer.

CHOOSE YOUR INTERIOR



Rogue Sport™ SL shown in Charcoal Leather with optional equipment.



Charcoal Cloth S Premium Light Gray Cloth SV Premium Charcoal Cloth SV Light Gray Leather SL Charcoal Leather SL

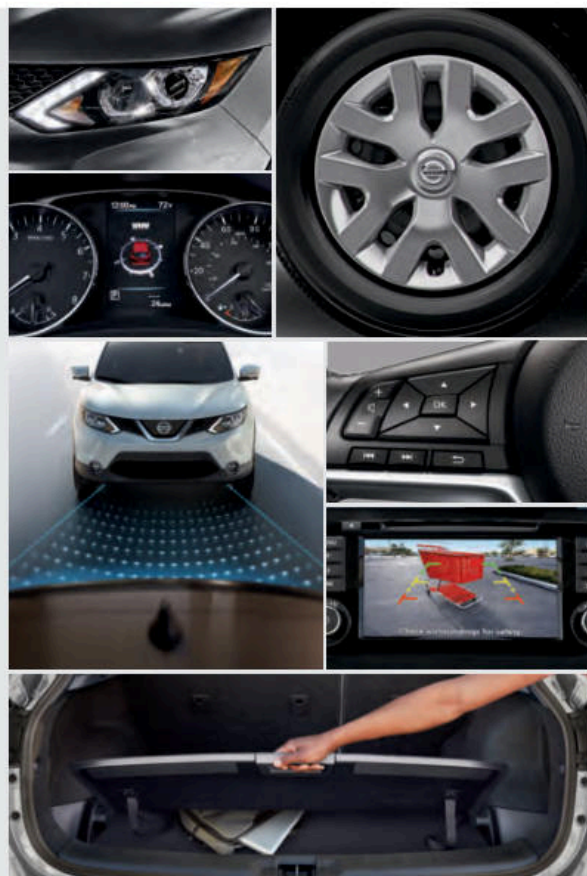
CHOOSE YOUR TRIM LEVEL

S

- 2.0-liter 4-cylinder engine
- Xtronic CVT® (Continuously Variable Transmission)
- Eco Mode
- Available Intelligent All-Wheel Drive
- Automatic Emergency Braking¹²
- Blind Spot Warning⁶
- Rear Cross Traffic Alert⁷
- Active Ride Control
- Intelligent Trace Control¹³
- Intelligent Engine Brake
- 16" Steel wheels with wheel covers
- P215/65R16 all-season tires
- Halogen headlights with LED signature
- LED Daytime Running Lights
- Rear spoiler
- Body-color outside door handles
- 5" Color Advanced Drive-Assist® Display^{14, 15}
- AM/FM/CD audio system with four speakers
- NissanConnect® 7" touch-screen display⁹
- USB connection port¹⁶
- SiriusXM® Radio with 3-month complimentary trial access⁹
- Apple CarPlay⁹
- Android Auto™⁹
- Hands-free Text Messaging Assistant¹⁷
- Bluetooth® Hands-free Phone System⁹
- Bluetooth® streaming audio⁹
- RearView Monitor¹⁸
- Rear passenger air conditioning vents
- Integrated key with remote keyless entry
- Tilt and telescoping steering column
- Cruise control
- Variable intermittent front and intermittent rear windshield wipers
- 12-volt DC power outlet¹⁶
- Approach lighting
- Six cargo tie-down hooks¹⁹
- Cargo cover
- 6-way manual driver's seat
- 60/40 2nd-row split folding seat
- Cloth seat trim
- Divide-N-Hide® Cargo System¹⁹
- Rear Door Alert²⁰
- Vehicle Dynamic Control (VDC)²¹ with Traction Control System (TCS)
- Tire Pressure Monitoring System (TPMS) with Easy-Fill Tire Alert^{22, 23}
- Nissan Advanced Air Bag System²⁴

AVAILABLE PACKAGE:

- Appearance Package



SL

INCLUDES SV EQUIPMENT PLUS:

- 19" Aluminum-alloy wheels
- Leather-appointed seats
- Quick Comfort® heated front seats
- Heated leather-wrapped steering wheel
- Leather-wrapped shift knob
- ProPILOT Assist²
- Intelligent Cruise Control²⁶
- Fog lights
- Power heated outside mirrors with LED turn signal indicators
- Nissan Door to Door Navigation with Premium Traffic²⁷
- NissanConnect Services powered by SiriusXM® with complimentary trial access to 3-year Select and 6-month Premium Plus packages⁹
- Voice Recognition for audio and navigation²⁷
- SiriusXM® Traffic and Travel Link® with 3-month complimentary trial access⁹
- Bose® Premium Audio System with nine speakers, including dual woofers
- Intelligent Around View® Monitor¹⁰
- Remote Engine Start System with Intelligent Climate Control²⁸
- Front driver's seatback pocket
- Electronic Parking Brake

AVAILABLE PACKAGE:

- Premium Package



SV

INCLUDES S EQUIPMENT PLUS:

- 17" Aluminum-alloy wheels
- Power outside mirrors with LED turn signal indicators
- Roof rails¹⁹
- Nissan Intelligent Key® with Push Button Ignition
- Rear Sonar System²⁵
- Automatic Emergency Braking with Pedestrian Detection¹
- Intelligent Lane Intervention⁸
- High Beam Assist
- Rear Automatic Braking⁵
- Dual Zone Automatic Temperature Control
- Dual illuminated visor vanity mirrors
- Premium cloth seat trim
- 8-way power driver's seat, including 2-way lumbar support
- Two additional speakers (six total)

AVAILABLE PACKAGES:

- All-Weather Package
- Technology Package



CHOOSE YOUR PACKAGE



APPEARANCE PACKAGE | S

- 17" Aluminum-alloy wheels



ALL-WEATHER PACKAGE | SV

- Fog lights
- Heated outside mirrors
- Remote Engine Start System with Intelligent Climate Control²⁸
- Quick Comfort[®] heated front seats
- Heated leather-wrapped steering wheel
- Leather-wrapped shift knob



PREMIUM PACKAGE | SL

- Power Sliding Moonroof with one-touch open/close and tilt feature
- LED low- and high-beam headlights
- Auto-dimming interior rearview mirror with HomeLink[®] Universal Transceiver



TECHNOLOGY PACKAGE | SV

- Fog lights
- Heated outside mirrors
- Remote Engine Start System with Intelligent Climate Control²⁸
- Nissan Door to Door Navigation with Premium Traffic²⁷
- NissanConnect[®] Services powered by SiriusXM[®] with complimentary trial access to 3-year Select and 6-month Premium Plus packages⁹
- Nissan Voice Recognition for audio and navigation²⁷
- SiriusXM[®] Traffic and Travel Link[®] with 3-month complimentary trial access⁹
- Intelligent Around View[®] Monitor¹⁹
- ProPILOT Assist²
- Intelligent Cruise Control²⁶
- Quick Comfort[®] heated front seats
- Heated leather-wrapped steering wheel
- Leather-wrapped shift knob
- Electronic Parking Brake

CHOOSE YOUR ACCESSORIES



Every Genuine Nissan Accessory is custom-fit, custom-designed and durability-tested. Each one is backed by Nissan's 3-year/36,000-mile (whichever occurs first) limited warranty (if installed by dealer at the time of purchase), and can be financed when installed by dealer at time of purchase.²⁹

- A. Dual Rear USB Rapid Charging Ports¹⁶**
Charge two devices up in a flash.
- B. Illuminated Kick Plates**
Step inside and light 'em up.
- C. Chrome Front Lip Finisher**
Cut through the air in stunning style.
- D. All-season Floor Mats**
Stepping in from the rain or snow? We got you covered.
- E. Wireless Smartphone Charger¹⁶**
Get your juice without the tangle.
- F. Interior Accent Lighting**
Add a warm glow to the mood.
- G. Fog Lights**
Distinct look. Increased visibility.
- H. 19" Aluminum-alloy Wheels**
Cruise with some attitude.

Additional Accessories:

- Nissan WiFi⁹
- Clear Film Hood Protector
- All-season Cargo Area Protector (2-piece)¹⁹
- Carpeted Floor Mats
- Carpeted Cargo Area Protector (2-piece)¹⁹
- Hatch Tent
- Cargo Net
- Frameless Auto-dimming Mirror with Universal Remote
- Impact Sensor
- Cargo Organizer Block/Stabilizer¹⁹
- And More

GENUINE NISSAN ACCESSORIES

TURN BRAND-NEW INTO ALL YOU

For more information and to shop online for Rogue Sport™ Genuine Nissan Accessories, go to bit.ly/19roguesport-estore



To see Genuine Nissan Accessories in action, go to bit.ly/19roguesport_gna

Nissan Rogue Sport™ SV shown in Pearl White TriCoat with 17" Aluminum-alloy Wheels, Roof Rail Crossbars,¹⁹ Side-window Deflectors, Chrome Rear Glass Finisher, Chrome Rear Bumper Protector, Chrome Door Side Sill Strips, External Ground Lighting, and Splash Guards.

SPECIFICATIONS

Engine	S	SV	SL
2.0-liter DOHC 16-valve 4-cylinder	■	■	■
— Horsepower – 141 hp @ 6,000 rpm			
— Torque – 147 lb-ft @ 4,400 rpm			
Continuously Variable Valve Timing Control System (CVTCS) on Intake and exhaust valves	■	■	■
Nissan Direct Ignition System with double platinum-tipped spark plugs	■	■	■
Eco Mode	■	■	■

Drivetrain	S	SV	SL
Front-Wheel Drive (FWD)	■	■	■
Intelligent All-Wheel Drive (AWD)	□	□	□
Hill start assist	■	■	■
Xtronic CVT® (Continuously Variable Transmission)	■	■	■

Brakes	S	SV	SL
4-wheel vented disc brakes	■	■	■
4-wheel Anti-lock Braking System (ABS)	■	■	■
Electronic Brake force Distribution (EBD)	■	■	■
Brake Assist ³⁰	■	■	■
Intelligent Trace Control ¹³	■	■	■
Intelligent Engine Brake	■	■	■
Active Ride Control	■	■	■

Suspension/Chassis Bracing/Steering	S	SV	SL
Independent strut front suspension	■	■	■
Independent multi-link rear suspension	■	■	■
Front and rear stabilizer bars	■	■	■
Vehicle-speed-sensitive electric power steering with Sport Mode	■	■	■

Wheels/Tires	S	SV	SL
16" x 6.5" steel wheels with wheel covers	■		
17" x 7.0" aluminum-alloy wheels	A	■	
19" x 7.0" aluminum-alloy wheels			■
P215/65R16 all-season tires	■		
P215/60R17 all-season tires	A	■	
P225/45R19 all-season tires			■

Exterior Features	S	SV	SL
Halogen headlights with LED signature	■	■	■
LED Daytime Running Lights	■	■	■
LED low- and high-beam headlights			P
Intelligent Auto Headlights	■	■	■
Fog lights		AW/T	■
Body-color outside door handles	■	■	■
Body-color power outside mirrors	■		
Body-color power outside mirrors with LED turn signal indicators		■	
Body-color power heated outside mirrors with LED turn signal indicators		AW/T	■
Approach lighting	■	■	■
Roof rails ¹⁹		■	■
Rear spoiler	■	■	■

Exterior Features (continued)	S	SV	SL
Black wheel arch moldings and rocker panels	■	■	■
Power Sliding Moonroof with one-touch open/close and tilt feature			P
UV-reducing solar glass	■	■	■

Comfort/Convenience	S	SV	SL
5" Color Advanced Drive-Assist® Display ^{14, 15}	■	■	■
Nissan Door to Door Navigation with Premium Traffic ²⁷		T	■
NissanConnect® Services powered by SiriusXM® with complimentary trial access to 3-year Select and 6-month Premium Plus packages ⁹		T	■
NissanConnect 7" touch-screen display ⁹	■	■	■
Voice Recognition for navigation and audio ²⁷		T	■
Android Auto™ ⁹	■	■	■
Apple CarPlay ⁹	■	■	■
SiriusXM® Traffic and Travel Link® with 3-month complimentary trial access ⁹		T	■
Hands-free Text Messaging Assistant ¹⁷	■	■	■
Bluetooth® Hands-free Phone System ⁹	■	■	■
RearView Monitor ¹⁸	■	■	■
Intelligent Around View® Monitor ¹⁰		T	■
Dual Zone Automatic Temperature Control	■	■	■
Rear passenger air conditioning vents	■	■	■
Power windows with driver's one-touch auto-up/down feature	■	■	■
Power door locks with auto-locking feature	■	■	■
Integrated key with remote keyless entry	■		
Nissan Intelligent Key® with Push Button Ignition			■
Remote Engine Start System with Intelligent Climate Control ²⁸		AW/T	■
High Beam Assist		■	■
Tilt and telescoping steering column	■	■	■
Cruise control	■	■	■
Intelligent Cruise Control ²⁶		T	■
ProPILOT Assist ²		T	■
Variable intermittent windshield wipers	■	■	■
Intermittent rear window wiper	■	■	■
12-volt DC power outlet ¹⁶	■	■	■
Sun visors with vanity mirrors and extensions	■		
Dual illuminated visor vanity mirrors		■	■
Overhead LED map lights	■	■	■
Overhead sunglasses storage	■	■	■
Front center console	■	■	■
Rear-seat center armrest	■	■	■
Front driver's seatback pocket			■
Four cup holders and four bottle holders	■	■	■
Six cargo tie-down hooks ¹⁹	■	■	■
Divide-N-Hide® Cargo System ¹⁹	■	■	■
Cargo cover	■	■	■
Auto-dimming inside rearview mirror with HomeLink®			P
Universal Transceiver			
Electronic Parking Brake		T	■

Seating/Appointments	S	SV	SL
6-way manual driver's seat	■		
8-way power driver's seat, including 2-way lumbar support		■	■
4-way manual front-passenger's seat	■	■	■
60/40 2nd-row split folding seat	■	■	■
Cloth seat trim	■		
Premium cloth seat trim		■	
Leather-appointed seats			■
Quick Comfort® heated front seats		AW/T	■
Heated leather-wrapped steering wheel		AW/T	■
Leather-wrapped shift knob		AW/T	■

Audio/Entertainment	S	SV	SL
AM/FM/CD audio system with four speakers	■		
AM/FM/CD audio system with six speakers		■	
Bose® Premium Audio System with nine speakers, including dual woofers			■
MP3/WMA CD playback capability	■	■	■
Auxiliary audio input jack ¹⁶	■	■	■
USB connection port ¹⁶	■	■	■
Bluetooth® streaming audio ⁹	■	■	■
SiriusXM® Radio with 3-month complimentary trial access ⁹	■	■	■
Radio Data System (RDS)	■	■	■
Speed-sensitive volume control	■	■	■
Illuminated steering wheel-mounted audio controls	■	■	■

Safety/Security	S	SV	SL
Nissan Advanced Air Bag System with dual-stage supplemental front air bags with seat belt and occupant-classification sensors ²⁴	■	■	■
Driver and front-passenger seat-mounted side-impact supplemental air bags ²⁴	■	■	■
Roof-mounted curtain supplemental air bags with rollover sensor for side-impact head protection for front and rear-seat outboard occupants ²⁴	■	■	■
Vehicle Dynamic Control (VDC) ²¹ with Traction Control System (TCS)	■	■	■
Automatic Emergency Braking ¹²	■		
Automatic Emergency Braking with Pedestrian Detection ¹		■	■
Blind Spot Warning ⁶	■	■	■
Rear Automatic Braking ⁵		■	■
Rear Cross Traffic Alert ⁷	■	■	■
Intelligent Lane Intervention ⁸		■	■
3-point ELR passenger seat belt system	■	■	■
LATCH System (Lower Anchors and Tethers for Children)	■	■	■
Tire Pressure Monitoring System (TPMS) with Easy-Fill Tire Alert ^{22, 23}	■	■	■

CAPACITIES/MPG

Capacities	
Seating capacity	5
Interior passenger volume without moonroof (cu. ft.)	96.0
Interior passenger volume with moonroof (cu. ft.)	94.3
Cargo capacity with 2nd row upright – S/SV/SL (cu. ft.)	22.9/20.0/19.9 (20.0 with moonroof)
Cargo capacity with rear seats folded down – S/SV/SL (cu. ft.)	61.1/53.3/53.3 (53.0 with moonroof)
Fuel tank (gals.)	14.5

Curb Weights – Lbs.	S	SV	SL
FWD	3,261	3,296	3,331
AWD	3,377	3,411	3,446

2018 EPA Fuel Economy Estimates ³¹	
City/Hwy/Combined MPG	
AWD	24/30/27
FWD	25/32/28

NISSAN ROADSIDE ASSISTANCE

Your peace of mind is on us. For 36 months or 36,000 miles, whichever comes first, your new Nissan vehicle is covered for the following:³²

- Flat-tire changes
- Trip Interruption benefits
- Jump starts
- Vehicle lockouts
- Emergency fuel delivery

Follow Nissan on:



visit NissanUSA.com/roguesport

PRINTED IN POLAND