

NISSAN INTELLIGENT MOBILITY™

Nissan Intelligent Mobility guides everything we do. We're using new technologies to transform cars from mere driving machines into assistants. Together the journey is more confident, connected, and exciting. Whether it's cars that assist in the driving task, or highways that charge your EV as you go along, it's all in the very near future. And it's a future already taking shape in the Nissan you drive today.

GET A ROGUE SPORT™ DIGITAL BROCHURE

Go to NissanUSA.com and find a digital brochure for Rogue Sport and every Nissan model in the lineup. Available on desktop, smartphone, or tablet, it's the full product story - including demos, videos, and complete info on trims, colors, and accessories.



Innovation
that excites

2020 ROGUE SPORT™



¹Available feature. ²Intelligent All-Wheel Drive cannot prevent collisions or provide enhanced traction in all conditions. Always monitor traffic and weather conditions. ³Driving is serious business and requires your full attention. If you have to use the connected device while driving, exercise extreme caution at all times so full attention may be given to vehicle operation. ⁴Availability of features vary by vehicle model year, model, trim level, packaging, and options. Please see Owner's Manual for important feature information. ⁵ProPILOT Assist cannot prevent collisions. Always monitor traffic conditions and keep both hands on the steering wheel. See Owner's Manual for safety information. ⁶Intelligent Around View® Monitor cannot eliminate blind spots and may not detect every object. Driver should always turn and check surroundings before driving. See Owner's Manual for safety information. ⁷Automatic Emergency Braking with Pedestrian Detection cannot prevent all collisions and may not provide warning or braking in all conditions. Driver should monitor traffic conditions and brake as needed to prevent collisions. See Owner's Manual for safety information. ⁸Rear Automatic Braking cannot prevent all collisions and may not provide warning or braking in all conditions. Driver should monitor traffic conditions and brake as needed to prevent collisions. See Owner's Manual for safety information. ⁹Rear Cross Traffic Alert may not detect all vehicles. See Owner's Manual for safety information. ¹⁰Blind Spot Warning cannot prevent collisions and may not detect every object or warn in all situations. Driver should always turn and look before changing lanes. See Owner's Manual for safety information. ¹¹Lane Departure Warning operates only when lane markings are able to be detected. See Owner's Manual for safety information. ¹²Available services/features may be shown. Compatible connected device may be required. Only use services/features and device when safe and legal to do so. Subject to GPS and wireless network availability and connection, and system/technology limitations. Text rates/data usage/subscription may apply. Some services/features provided by companies not within Nissan or its partners' or agents' control and may be discontinued at any time. For more information, see dealer, Owner's Manual, or NissanUSA.com/connect/important-information. ¹³Use Hands Free Text Messaging when parked in a safe location. If you must use while driving, monitor traffic conditions and keep both hands on the steering wheel to prevent collisions. Compatible device required. Message and data rates may apply. ¹⁴Extra cost option. ¹⁵Intelligent Lane Intervention only operates when lane markings are detectable. See Owner's Manual for safety information. ¹⁶Intelligent Forward Collision Warning cannot prevent collisions. See Owner's Manual for safety information. ¹⁷Sonar System may not detect every object. Driver should always check surroundings before driving. See Owner's Manual for safety information. ¹⁸See Owner's Manual for safety information. ¹⁹Intelligent Trace Control cannot prevent collisions or loss of control. Driver should remain in control of vehicle at all times. See Owner's Manual for safety information. ²⁰Driving is serious business and requires your full attention. If you have to use the feature while driving, exercise extreme caution at all times so full attention may be given to vehicle operation. ²¹Information displayed is dependent on how vehicle is equipped. ²²RearView Monitor may not detect every object and does not eliminate blind spots or warn of moving objects. See Owner's Manual for safety information. ²³Cargo shown for display purposes only. Cargo and load capacity limited by weight and distribution. Always secure cargo. Heavy loading of the vehicle with cargo, especially on the roof, will affect the handling and stability of the vehicle. ²⁴Vehicle Dynamic Control cannot prevent collisions due to abrupt steering, carelessness, or dangerous driving techniques. It should remain on when driving, except when freeing the vehicle from mud or snow. See Owner's Manual for safety information. ²⁵Tire Pressure Monitoring System is not a substitute for regular tire pressure checks. See Owner's Manual for safety information. ²⁶Vehicle must be on for the Easy-Fill Tire Alert to operate. ²⁷Air bags are only a supplemental restraint system. Always wear your seat belt. Rear-facing child restraints should not be placed in the front-passenger's seat. All children 12 and under should ride in the rear seat properly secured in child restraints, booster seats, or seat belts according to their size. Air bags will only inflate in certain accidents. See Owner's Manual for safety information. ²⁸State laws may apply. Review before using. ²⁹Traffic Sign Recognition (TSR) may not detect and read all traffic signs in all conditions. Driver should monitor all traffic signs and obey all traffic laws. ³⁰Intelligent Driver Alertness cannot provide a warning in every situation. See Owner's Manual for safety information. ³¹Never program while driving. GPS mapping may not be detailed in all areas or reflect current road status. ³²Genuine Nissan Accessories are covered by Nissan's Limited Warranty on Genuine Nissan Replacement Parts, Genuine NISMO® S-Tune Parts, and Genuine Nissan Accessories for the longer of 12 months/12,000 miles (whichever occurs first) or the remaining period under the 3-year/36,000-mile (whichever occurs first) Nissan New Vehicle Limited Warranty. Terms and conditions apply. See dealer, Warranty Information Booklet, or parts.NissanUSA.com for details. ³³Genuine Nissan Accessory Roof Rail Crossbars have a maximum weight limit of 100 lbs. ³⁴Not a genuine Nissan part/accessory. Not warranted by Nissan. Refer to product manufacturer for warranty details. Nissan Limited Warranty does not cover damages or failures to the vehicle caused by improper installation or alterations of any Nissan-approved accessory or component. Contact your dealer for details. ³⁵Vehicle shown is for illustrative purposes only. Not representative of brochure's model year/model. ³⁶Brake Assist cannot prevent all collisions and may not provide warning or braking in all conditions. Driver should monitor traffic conditions and brake as needed to prevent collisions. See Owner's Manual for safety information. ³⁷Intelligent Cruise Control uses limited braking and is not a collision avoidance or warning system. Driver should monitor traffic conditions and brake as needed to prevent collisions. See Owner's Manual for safety information. ³⁸Fuel economy based on targeted 2020 EPA fuel economy estimates for 2020 Rogue Sport - EPA data not available at time of publication. Targeted 2020 fuel economy for Rogue Sport FWD 25 city MPG/32 hwy MPG/28 combined MPG. Estimates based on Nissan internal testing results, subject to EPA confirmation. Targeted 2020 fuel economy for Rogue Sport AWD 24 city MPG/30 hwy MPG/27 combined MPG. Estimates based on Nissan internal testing results, subject to EPA confirmation. Actual mileage may vary with driving conditions. Use for comparison only. ³⁹For a period of 36 months/36,000 miles from the date the vehicle is delivered to the first retail buyer or otherwise put into use, whichever is earlier. Google, Android, Android Auto and YouTube are trademarks of Google LLC. The Google Assistant is not available in certain languages and countries. Apple CarPlay®, Apple Music®, Siri® and Siri® Eyes Free are registered trademarks of Apple, Inc. Apple Maps is a trademark of Apple, Inc. Bluetooth® word mark and logos are owned by Bluetooth SIG, Inc., and any use of such marks by Nissan is under license. Bose® is a registered trademark of The Bose Corporation. Facebook® is a registered trademark of Facebook, Inc. HomeLink® is a registered trademark of Gentex Corporation. iPhone® is a registered trademark of Apple, Inc. All rights reserved. iPhone® or other external device not included. The Sirius®, XM®, and SiriusXM® names and all related marks and logos are trademarks of Sirius XM Radio Inc. Twitter® is a registered trademark of Twitter, Inc. Yakima® is a registered trademark of Yakima Products, Inc. This brochure is intended for general descriptive and informational purposes only. It is subject to change and does not constitute an offer, representation or warranty (express or implied) by Nissan North America, Inc. Interested parties should confirm the accuracy of any information in this brochure as it relates to a vehicle directly with Nissan North America, Inc., before relying on it to make a purchase decision. Nissan North America, Inc., reserves the right to make changes, at any time, without prior notice, in prices, colors, materials, equipment, specifications, and models and to discontinue models or equipment. Due to continuous product development and other pre- and post-production factors, actual vehicle, materials and specifications may vary from this brochure. Some vehicles shown with optional equipment. See the actual vehicle for complete accuracy. Availability and delivery times for particular models or equipment may vary. Specifications, options and accessories may differ in Hawaii, U.S. territories and other countries. For additional information on availability, options or accessories, see your Nissan dealer or contact Nissan North America, Inc. At NissanUSA.com, you'll find virtual product demonstrations, a way to "build your own Nissan," a dealer locator, and more information about key Nissan support services. Or if you'd prefer, call 1-800-NISSAN-3 for answers to specific questions about Rogue Sport™ or any other Nissan vehicle. The Nissan names, logos, product names, feature names, and slogans are trademarks owned by or licensed to Nissan Motor Co. Ltd. and/or its North American subsidiaries. Other trademarks and trade names are those of their respective owners. **Always wear your seat belt, and please drive responsibly.**



Cross over to progressive new style and a commanding view of downtown. Commute with the confidence of driver assistance technologies¹ that can respond to trouble before it messes with your plans. Rain? Snow? Available Intelligent All-Wheel Drive is ready to react.² Seamlessly access podcasts, group chats, and more with available compatible smartphone integration.³ The new 2020 Nissan Rogue Sport.[™] This is tech that conquers the city. This is Nissan Intelligent Mobility.⁴

HELPS KEEP YOU
CENTERED IN
GENTLE CURVES⁵

MAINTAINS YOUR
PRESET SPEED AND
DISTANCE⁵

CAN EVEN
COME TO A
COMPLETE STOP⁵



NISSAN ProPILOT ASSIST

Feel free to let go of driving stress. With available Nissan ProPILOT Assist, Rogue Sport™ helps out with daily highway driving – following the car ahead at a preset distance, or helping keep you centered in your lane. It can even bring your Rogue Sport to a full stop based on the traffic flow, and can bring you back up to speed when traffic starts moving again.⁵

NISSAN INTELLIGENT MOBILITY™



NISSAN SAFETY SHIELD® 360

Nissan Intelligent Mobility reinvents the way you move. You'll drive with greater awareness, and even get an assist when you need it. Standard on every Rogue Sport, these advanced safety features help monitor in front, behind, and all around you for 360° of confidence.⁴

Automatic Emergency Braking with Pedestrian Detection⁷

Rear Automatic Braking⁸

Rear Cross Traffic Alert⁹

Blind Spot Warning¹⁰

Lane Departure Warning¹¹

High Beam Assist



INTELLIGENT AROUND VIEW® MONITOR

The available Intelligent Around View Monitor helps you squeeze into that spot with your pride and wheels intact. It also gives you an on-screen heads-up when it detects moving objects near your vehicle.⁶



SEAMLESS CONNECTIVITY

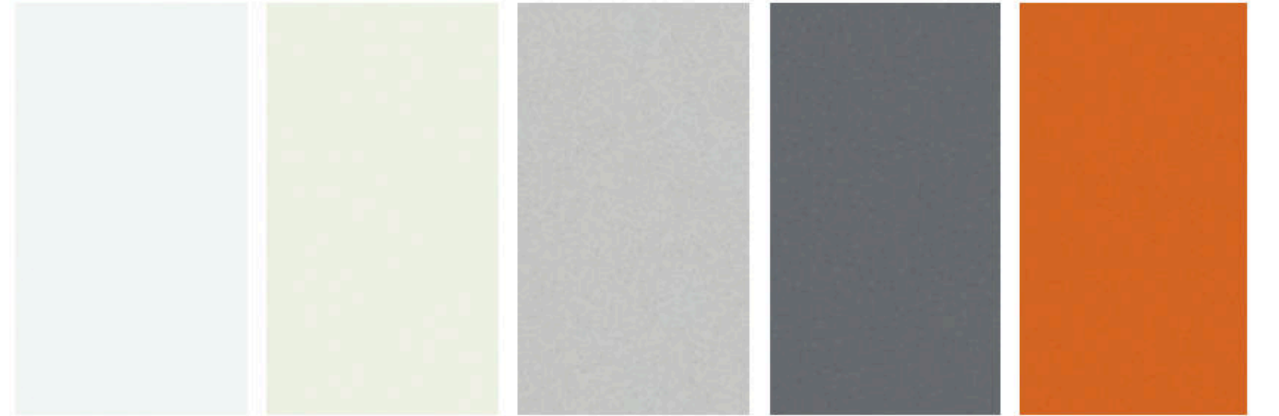


APPLE CARPLAY®
People to see? Places to be? Just ask Siri.® Equipped with Siri® voice control, Apple CarPlay® (shown on left) brings on board to your Rogue Sport your contacts, favorite messaging apps, Apple Music® playlists, Apple Maps, and more. Simply plug in your compatible iPhone® and go.^{3, 12}

androidauto

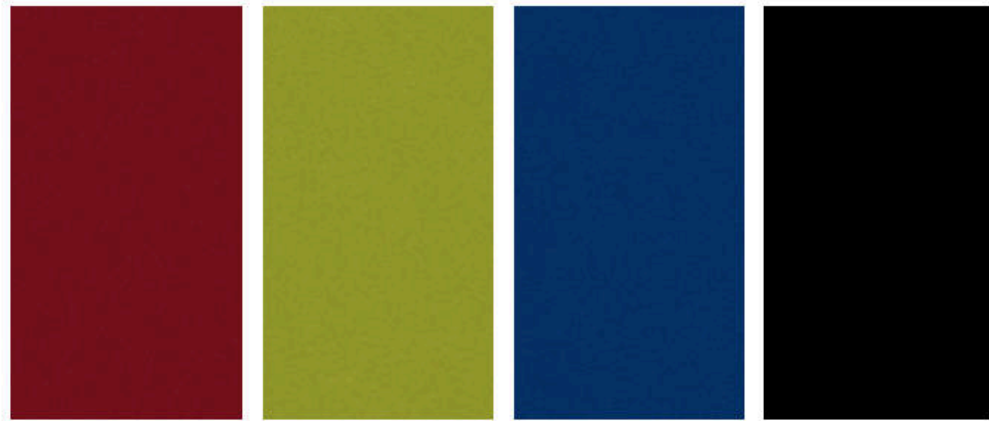
ANDROID AUTO™
Know where you're going and when with Android Auto for your Rogue Sport. Google Maps helps you navigate to your next appointment, while Google Assistant keeps you on top of your schedule. Choose a song, change your destination, or respond to a text with your hands on the wheel using the hundreds of available voice commands.^{3, 12, 13}

CHOOSE YOUR COLOR



Glacier White Pearl White TriCoat¹⁴ Brilliant Silver Metallic Gun Metallic Monarch Orange Metallic¹⁴

	S	SV	SL
CHARCOAL CLOTH	■		
PREMIUM LIGHT GRAY CLOTH		■	
PREMIUM CHARCOAL CLOTH		■	
LIGHT GRAY LEATHERETTE		□	
CHARCOAL LEATHERETTE		□	
LIGHT GRAY LEATHER			■
CHARCOAL LEATHER			■



Scarlet Ember Tintcoat¹⁴ Nitro Lime Metallic Caspian Blue Metallic Magnetic Black Pearl

	S	SV	SL
CHARCOAL CLOTH	■		
PREMIUM LIGHT GRAY CLOTH		■	
PREMIUM CHARCOAL CLOTH		■	
LIGHT GRAY LEATHERETTE		□	
CHARCOAL LEATHERETTE		□	
LIGHT GRAY LEATHER			■
CHARCOAL LEATHER			■

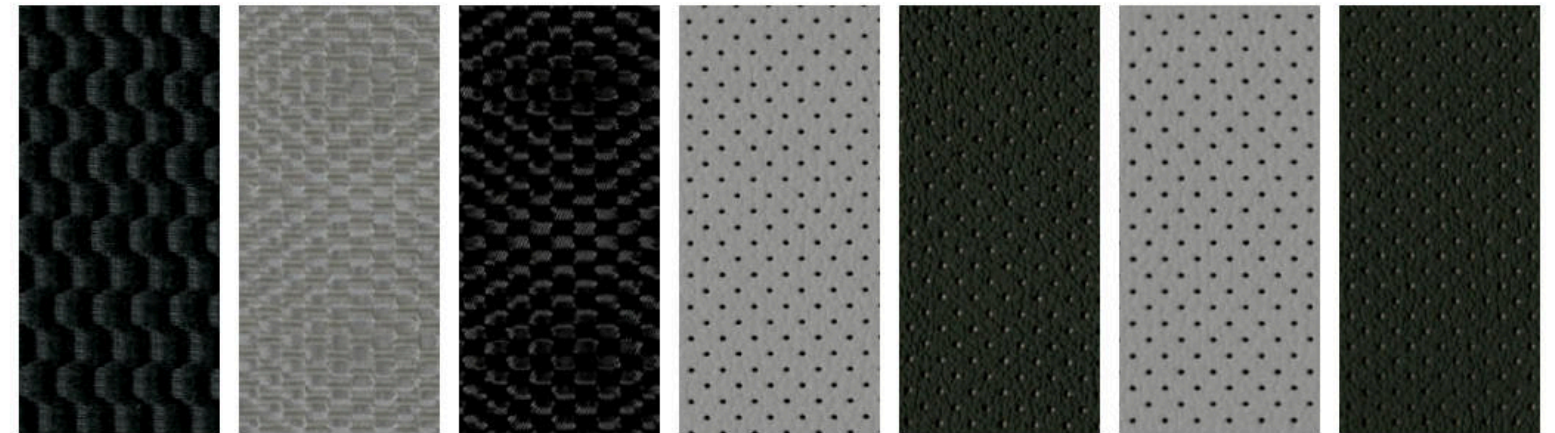
■ Standard
□ Part of Technology Package

Nissan has taken care to ensure that the color swatches presented here are the closest possible representations of actual vehicle colors. Swatches may vary slightly due to the printing process and whether viewed in daylight, fluorescent or incandescent light. Please see the actual colors at your dealer.

CHOOSE YOUR INTERIOR



Rogue Sport™ SL shown in Charcoal Leather with optional equipment.

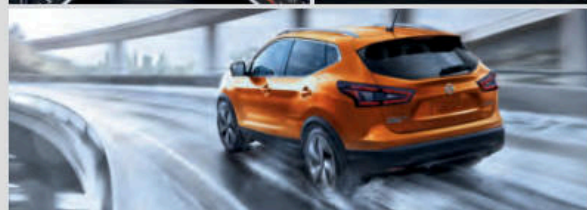
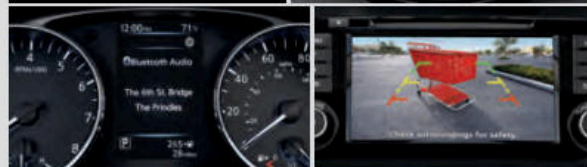


Charcoal Cloth S Premium Light Gray Cloth SV Premium Charcoal Cloth SV Light Gray Leatherette SV Charcoal Leatherette SV Light Gray Leather SL Charcoal Leather SL

CHOOSE YOUR TRIM LEVEL

S

- 2.0-liter 4-cylinder engine
- Xtronic CVT® (Continuously Variable Transmission)
- Eco Mode
- Available Intelligent All-Wheel Drive²
- Automatic Emergency Braking with Pedestrian Detection⁷
- Intelligent Lane Intervention¹⁵
- Intelligent Forward Collision Warning¹⁶
- Rear Automatic Braking⁸
- Rear Cross Traffic Alert⁹
- Blind Spot Warning¹⁰
- Rear Sonar System¹⁷
- High Beam Assist
- Rear Door Alert¹⁸
- Auto on/off headlights
- Active Ride Control
- Intelligent Trace Control¹⁹
- Intelligent Engine Brake
- 16" Steel wheels with wheel covers
- Halogen headlights with LED signature Daytime Running Lights
- Rear spoiler
- Body-color outside door handles
- Advanced Drive-Assist® Display^{20, 21}
- NissanConnect® 7" touch-screen display²⁰
- Apple CarPlay^{®12}
- Android Auto^{™12}
- Hands-free Text Messaging Assistant¹³
- Bluetooth® Hands-free Phone System¹²
- AM/FM/CD audio system with four speakers
- Streaming Audio via Bluetooth^{®12}
- USB connection port³
- SiriusXM® Radio with 3-month subscription included¹²
- RearView Monitor²²
- Rear passenger air conditioning vents
- Integrated key with remote keyless entry
- Tilt and telescoping steering column
- Cruise control
- Variable intermittent front and intermittent rear windshield wipers
- 12-volt DC power outlet³
- Approach lighting
- Six cargo tie-down hooks²³
- Cargo cover²³
- 6-way manual driver's seat
- 60/40 2nd-row split folding seat
- Cloth seat trim
- Vehicle Dynamic Control (VDC)²⁴ with Traction Control System (TCS)
- Tire Pressure Monitoring System (TPMS) with Easy-Fill Tire Alert^{25, 26}
- Nissan Advanced Air Bag System²⁷



Standard Safety Shield® 360

AVAILABLE PACKAGE:

- Appearance Package

SV INCLUDES S EQUIPMENT PLUS:

- 17" Aluminum-alloy wheels
- Power heated outside mirrors with LED turn signal indicators
- Roof rails²³
- Nissan Intelligent Key® with Push Button Ignition
- Dual Zone Automatic Temperature Control
- Dual illuminated visor vanity mirrors
- Premium cloth seat trim
- 8-way power driver's seat, including 2-way lumbar support
- AM/FM/CD audio system with six speakers
- Divide-N-Hide® Cargo System²³

AVAILABLE PACKAGES:

- All-Weather Package
- Technology Package



SL INCLUDES SV EQUIPMENT PLUS:

- 19" Aluminum-alloy wheels
- Leather-appointed seats
- Quick Comfort® heated front seats
- Remote Engine Start System with Intelligent Climate Control²⁸
- Heated leather-wrapped steering wheel
- Leather-wrapped shift knob
- ProPILOT Assist⁵
- Traffic Sign Recognition²⁹
- Intelligent Around View® Monitor⁶
- Intelligent Driver Alertness³⁰
- Nissan Door to Door Navigation with Premium Traffic³¹
- NissanConnect® Services powered by SiriusXM® with trial access to 3-year Select and 6-month Premium Plus packages^{12, 28}
- Nissan Voice Recognition³¹
- SiriusXM® Traffic and Travel Link® with 3-month trial access¹²
- Front driver's seatback pocket
- Electronic Parking Brake

AVAILABLE PACKAGE:

- Premium Package



CHOOSE YOUR PACKAGE



APPEARANCE PACKAGE | S

- 17" Aluminum-alloy wheels



ALL-WEATHER PACKAGE | SV

- Fog lights
- Remote Engine Start System with Intelligent Climate Control²⁸
- Quick Comfort[®] heated front seats
- Heated leather-wrapped steering wheel
- Leather-wrapped shift knob



PREMIUM PACKAGE | SL

- Power sliding glass moonroof
- LED low- and high-beam headlights
- Auto-dimming interior rearview mirror with HomeLink[®] Universal Transceiver
- 4-way power front-passenger's seat



- Driver's seat and outside mirror position memory
- Bose[®] Premium Audio System with subwoofer
- Fog lights



TECHNOLOGY PACKAGE | SV

- ProPILOT Assist⁵
- Intelligent Around View[®] Monitor⁶
- Fog lights
- Quick Comfort[®] heated front seats
- Remote Engine Start System with Intelligent Climate Control²⁸
- Heated leather-wrapped steering wheel



- Leather-wrapped shift knob
- Leatherette-trimmed seats
- Intelligent Driver Alertness³⁰
- Driver's seat and outside mirror position memory
- Electronic Parking Brake

Images may show additional available equipment.

CHOOSE YOUR ACCESSORIES



Every Genuine Nissan Accessory is custom-fit, custom-designed and durability-tested. Each one is backed by Nissan's 3-year/36,000-mile (whichever occurs first) limited warranty (if installed by dealer at the time of purchase), and can be financed when installed by dealer at time of purchase.³²

- A. **Yakima® FatCat EVO 6 Ski Rack**^{23, 33, 34, 35}
Get out of town with your board and skis in tow.
- B. **Illuminated Kick Plates**
Step inside and light 'em up.
- C. **Clear Film Hood Protector**
A discreet defense against pebbles and debris.
- D. **All-Season Floor Mats**
Stepping in from the rain or snow? We've got you covered.
- E. **17" Gloss Black Aluminum Wheels**
Edgy style for the profile of your Rogue Sport.
- F. **Interior Accent Lighting**
Add a warm glow to the mood.
- G. **Impact Sensor**
Keep your Rogue Sport alarmed, so you don't have to be.
- H. **19" Aluminum-alloy Wheels**
Cruise with some attitude.

Additional Accessories:

- All-Season Cargo Area Protector²³
- Carpeted Floor Mats
- Carpeted Cargo Area Protector (2-piece)²³
- Hatch Tent
- Cargo Net²³
- Frameless Auto-dimming Mirror with Universal Remote
- Cargo Organizer Block/Stabilizer²³
- And More

GENUINE NISSAN ACCESSORIES

TURN BRAND-NEW INTO ALL YOU

For more information and to shop online for Rogue Sport™ Genuine Nissan Accessories, go to bit.ly/20roguesport-estore



Nissan Rogue Sport™ SV shown in Pearl White TriCoat with 17" Black Aluminum-alloy Wheels, Roof Rail Crossbars,^{23, 33} Side-window Deflectors, Gloss Black Rear Glass Finisher, Chrome Rear Bumper Protector, Gloss Black Door Side Sill Strips, Exterior Ground Lighting, and Splash Guards.

SPECIFICATIONS

Engine	S	SV	SL
2.0-liter DOHC 16-valve 4-cylinder	■	■	■
— Horsepower – 141 hp @ 6,000 rpm			
— Torque – 147 lb-ft @ 4,400 rpm			
Continuously Variable Valve Timing Control System (CVTCS) on Intake and exhaust valves	■	■	■
Nissan Direct Ignition System with double platinum-tipped spark plugs	■	■	■
Eco Mode	■	■	■

Drivetrain	S	SV	SL
Front-Wheel Drive (FWD)	■	■	■
Intelligent All-Wheel Drive (AWD)	□	□	□
Xtronic CVT [®] (Continuously Variable Transmission)	■	■	■

Brakes	S	SV	SL
4-wheel vented disc brakes	■	■	■
4-wheel Anti-lock Braking System (ABS)	■	■	■
Electronic Brake force Distribution (EBD)	■	■	■
Brake Assist ⁵⁶	■	■	■
Electronic Parking Brake		T	■

Suspension/Chassis Bracing/Steering	S	SV	SL
Independent strut front suspension	■	■	■
Independent multi-link rear suspension	■	■	■
Front and rear stabilizer bars	■	■	■
Vehicle-speed-sensitive electric power steering with Sport Mode	■	■	■

Driver Assistance Technologies	S	SV	SL
Cruise control	■	■	
Intelligent Cruise Control ³⁷		T	■
ProPILOT Assist ⁵		T	■
Automatic Emergency Braking with Pedestrian Detection ⁷	■	■	■
Intelligent Lane Intervention ¹⁵	■	■	■
Blind Spot Warning ¹⁰	■	■	■
Rear Cross Traffic Alert ⁹	■	■	■
RearView Monitor ²²	■	■	■
Intelligent Around View [®] Monitor ⁶	■	T	■
Rear Automatic Braking ⁸	■	■	■
Vehicle Dynamic Control (VDC) ²⁴ with Traction Control System (TCS)	■	■	■
Active Ride Control	■	■	■
Hill start assist	■	■	■
Intelligent Engine Brake	■	■	■
Intelligent Trace Control ¹⁹	■	■	■
High Beam Assist	■	■	■
Intelligent Driver Alertness ³⁰		T	■

Wheels/Tires	S	SV	SL
16" x 6.5" steel wheels with wheel covers	■	■	
17" x 7.0" aluminum-alloy wheels	A	■	
19" x 7.0" aluminum-alloy wheels			■
P215/65R16 all-season tires	■	■	■
P215/60R17 all-season tires	A	■	
P225/45R19 all-season tires			■

■ Standard A Part of S Appearance Package T Part of SV Technology Package
□ Optional AW Part of SV All-Weather Package P Part of SL Premium Package

Exterior Features	S	SV	SL
Halogen headlights	■	■	■
LED Daytime Running Lights	■	■	■
LED low- and high-beam headlights			P
Auto on/off headlights	■	■	■
Fog lights		AW, T	P
Body-color outside door handles	■	■	■
Body-color power outside mirrors	■		
Body-color power heated outside mirrors with LED turn signal indicators		■	■
Approach lighting	■	■	■
Roof rails ²³		■	■
Rear spoiler	■	■	■
Black wheel arch moldings and rocker panels	■	■	■
Power Sliding Glass Moonroof			P
UV-reducing solar glass	■	■	■

Comfort/Convenience	S	SV	SL
Air conditioning with in-cabin filter	■		
Dual Zone Automatic Temperature Control		■	■
Rear passenger air conditioning vents	■	■	■
Power windows with driver's one-touch auto-up/down feature	■	■	■
Power door locks with auto-locking feature	■	■	■
Integrated key with remote keyless entry	■		
Nissan Intelligent Key [®] with Push Button Ignition		■	■
Remote Engine Start System with Intelligent Climate Control ²⁸		AW, T	■
Tilt and telescoping steering column	■	■	■
Variable intermittent windshield wipers	■	■	■
Intermittent rear window wiper	■	■	■
12-volt DC power outlet ³	■	■	■
Sun visors with vanity mirrors and extensions	■		
Dual illuminated visor vanity mirrors		■	■
Overhead LED map lights	■	■	■
Overhead sunglasses storage	■	■	■
Front center console	■	■	■
Rear-seat center armrest	■	■	■
Front driver's seatback pocket		■	■
Four cup holders and four bottle holders	■	■	■
Six cargo tie-down hooks ²³	■	■	■
Divide-N-Hide [®] Cargo System ²³	■	■	■
Cargo cover ²³	■	■	■
Auto-dimming inside rearview mirror with HomeLink [®] Universal Transceiver			P
6-way manual driver's seat	■		

Seating/Appointments	S	SV	SL
8-way power driver's seat, including 2-way lumbar support		■	■
4-way manual front-passenger's seat	■	■	■
4-way power front-passenger's seat			P
60/40 2nd-row split folding seat	■	■	■
Cloth seat trim	■		
Premium cloth seat trim		■	
Leatherette-appointed seats		T	
Leather-appointed seats			■
Quick Comfort [®] heated front seats		AW, T	■
Driver's seat and outside mirrors position memory		T	P
Heated leather-wrapped steering wheel		AW, T	■
Leather-wrapped shift knob		AW, T	■

Infotainment	S	SV	SL
AM/FM/CD audio system with four speakers	■		
AM/FM/CD audio system with six speakers		■	
Bose [®] Premium Audio System with subwoofer			P
5" Color Advanced Drive-Assist [®] Display ^{20, 21}	■	■	■
Nissan Door to Door Navigation with Premium Traffic ³¹			■
NissanConnect [®] Services powered by SiriusXM [®] with trial access to 3-year Select and 6-month Premium Plus packages ^{12, 28}			■
NissanConnect 7" touch-screen display ²⁰	■	■	■
Nissan Voice Recognition ³¹	■	■	■
Android Auto ^{™12}	■	■	■
Apple CarPlay ^{™12}	■	■	■
SiriusXM [®] Traffic and Travel Link [®] with 3-month trial access ¹²	■	■	■
Hands-free Text Messaging Assistant ¹³	■	■	■
Bluetooth [®] Hands-free Phone System ¹²	■	■	■
MP3/WMA CD playback capability	■	■	■
Auxiliary audio input jack ³	■	■	■
USB connection port ³	■	■	■
Streaming Audio via Bluetooth ^{®12}	■	■	■
SiriusXM [®] Radio with 3-month subscription included ¹²	■	■	■
Radio Data System (RDS)	■	■	■
Speed-sensitive volume control	■	■	■
Illuminated steering wheel-mounted audio controls	■	■	■

Safety/Security	S	SV	SL
Nissan Advanced Air Bag System with dual-stage supplemental front air bags with seat belt and occupant-classification sensors ²⁷	■	■	■
Driver and front-passenger supplemental knee air bag ²⁷	■	■	■
Driver and front-passenger seat-mounted side-impact supplemental air bags ²⁷	■	■	■
Rear passenger door-mounted side-impact supplemental air bags for outboard occupants ²⁷	■	■	■
Roof-mounted curtain supplemental air bags with rollover sensor for side-impact head protection for front and rear-seat outboard occupants ²⁷	■	■	■
3-point ELR passenger seat belt system	■	■	■
LATCH System (Lower Anchors and Tethers for Children)	■	■	■
Tire Pressure Monitoring System (TPMS) with Easy-Fill Tire Alert ^{25, 26}	■	■	■

DIMENSIONS/CAPACITIES/WEIGHTS/MPG

Exterior Dimensions - Inches	
Exterior	
Wheelbase	104.2
Overall length	172.7
Overall width	72.3
Overall height	62.5
Track width (front/rear)	62.4/62.2

Interior Dimensions - Inches	
Interior	
Head room without moonroof (front/rear)	39.6/38.3
Head room with moonroof (front/rear)	38.8/38.5
Leg room (front/rear)	42.8/33.4
Hip room (front/rear)	53.4/46.9
Shoulder room (front/rear)	56.6/55.7
Step-in height (front/rear)	17.1/17.8

Capacities	
Seating capacity	5
Interior passenger volume without moonroof (cu. ft.)	96.0
Interior passenger volume with moonroof (cu. ft.)	94.3
Cargo capacity with 2nd row upright (cu. ft.)	22.9/20.0/20.0 (19.9 with moonroof)
Cargo capacity with rear seats folded down (cu. ft.)	61.1/53.3/53.3 (53.0 with moonroof)
Fuel tank (gals.)	14.5

Curb Weights - Lbs.			
	S	SV	SL
FWD	3,343	3,367	3,433
AWD	3,466	3,477	3,487

2020 EPA Fuel Economy Estimates ³⁸			
City/Hwy/Combined MPG			
AWD		24/30/27	
FWD		25/32/28	

NISSAN ROADSIDE ASSISTANCE

Your peace of mind is on us. For 36 months or 36,000 miles, whichever comes first, your new Nissan vehicle is covered for the following:³⁹

- Flat-tire changes
- Trip Interruption benefits
- Jump starts
- Vehicle lockouts
- Emergency fuel delivery

Follow Nissan on:



visit [NissanUSA.com/roguesport](https://www.nissanusa.com/roguesport)

PRINTED IN USA