



Sign up to get the latest on
Nissan vehicles, news, and events.

<https://www.nissanusa.com/brochures/request-brochure.html>



Nissan Intelligent Mobility moves you one step ahead. In cars that feel like an extension of you, helping you see more and sense more, reacting with you, and sometimes even for you. Nissan Intelligent Mobility is about a better future – moving through life with greater confidence, excitement and connection to the world around you.



2021
ROGUE
SPORT™



¹Availability of features vary by vehicle model year, model, trim level, packaging, and options. Please see Owner's Manual for important feature information. ²Intelligent All-Wheel Drive cannot prevent collisions or provide enhanced traction in all conditions. Always monitor traffic and weather conditions. ³Driving is serious business and requires your full attention. If you have to use the connected device while driving, exercise extreme caution at all times so full attention may be given to vehicle operation. ⁴ProPILOT Assist cannot prevent collisions. It is the driver's responsibility to be in control of the vehicle at all times. Always monitor traffic conditions and keep both hands on the steering wheel. System operates only when lane markings are detected. Does not function in all weather, traffic and road conditions. System has limited control capability and the driver may need to steer, brake or accelerate at any time to maintain safety. See Owner's Manual for safety information. ⁵Intelligent Around View® Monitor cannot eliminate blind spots and may not detect every object. Driver should always turn and check surroundings before driving. See Owner's Manual for safety information. ⁶Nissan Safety Shield technologies can't prevent all collisions or warn in all situations. See Owner's Manual for important safety information. ⁷Automatic Emergency Braking with Pedestrian Detection cannot prevent all collisions and may not provide warning or braking in all conditions. Driver should monitor traffic conditions and brake as needed to prevent collisions. See Owner's Manual for safety information. ⁸Rear Automatic Braking cannot prevent all collisions and may not provide warning or braking in all conditions. Driver should always turn and check surroundings before driving and brake as needed to prevent collisions. See Owner's Manual for safety information. ⁹Rear Cross Traffic Alert may not detect all vehicles. See Owner's Manual for safety information. ¹⁰Lane Departure Warning and Intelligent Lane Intervention only operate when lane markings are able to be detected. See Owner's Manual for safety information. ¹¹Blind Spot Warning cannot prevent collisions and may not detect every object or warn in all situations. Driver should always turn and look before changing lanes. See Owner's Manual for safety information. ¹²Use feature only when safe and legal. Compatible device and service required. Subject to third party service availability. For more information see NissanUSA.com/connect/legal. ¹³Use the text messaging feature after stopping your vehicle in a safe location. If you have to use the feature while driving, exercise extreme caution at all times so full attention may be given to vehicle operation. Compatible smartphone required. Text rates and/or data usage may apply. ¹⁴Extra cost option. ¹⁵Leather appointments. ¹⁶Intelligent Forward Collision Warning cannot prevent collisions. See Owner's Manual for safety information. ¹⁷Sonar System may not detect every object. Driver should always check surroundings before driving. See Owner's Manual for safety information. ¹⁸Does not detect people or cargo. Always check rear seat before exiting. See Owner's Manual for safety information. ¹⁹Intelligent Trace Control cannot prevent collisions or loss of control. Driver should remain in control of vehicle at all times. See Owner's Manual for safety information. ²⁰Driving is serious business and requires your full attention. If you have to use the feature while driving, exercise extreme caution at all times so full attention may be given to vehicle operation. ²¹Information displayed is dependent on how vehicle is equipped. ²²Never program while driving. GPS mapping may not be detailed in all areas or reflect current road status. ²³RearView Monitor may not detect every object and does not eliminate blind spots or warn of moving objects. See Owner's Manual for safety information. ²⁴Cargo and load capacity limited by weight and distribution. Always secure cargo. Heavy loading of the vehicle with cargo, especially on the roof, will affect the handling and stability of the vehicle. ²⁵Vehicle Dynamic Control cannot prevent collisions due to abrupt steering, carelessness, or dangerous driving techniques. It should remain on when driving, except when freeing the vehicle from mud or snow. See Owner's Manual for safety information. ²⁶Tire Pressure Monitoring System is not a substitute for regular tire pressure checks. See Owner's Manual for safety information. ²⁷Vehicle must be on for the Easy-Fill Tire Alert to operate. ²⁸Air bags are only a supplemental restraint system. Always wear your seat belt. Rear-facing child restraints should not be placed in the front-passenger's seat. All children 12 and under should ride in the rear seat properly secured in child restraints, booster seats, or seat belts according to their size. Air bags will only inflate in certain accidents. See Owner's Manual for safety information. ²⁹State laws may apply. Review before using. ³⁰Traffic Sign Recognition may not detect and read all traffic signs in all conditions. Driver should monitor all traffic signs and obey all traffic laws. See Owner's Manual for details. ³¹Intelligent Driver Alertness cannot provide a warning in every situation. See Owner's Manual for safety information. ³²Genuine Nissan Accessories are covered by Nissan's limited warranty on Genuine Nissan Replacement Parts, Genuine NISMO® S-Tune Parts, and Genuine Nissan Accessories for the longer of 12 months/12,000 miles (whichever occurs first) or the remaining period under the 36-months/36,000-mile (whichever occurs first) new vehicle limited warranty. Terms and conditions apply. See dealer, warranty information booklet, or parts.nissanusa.com for details. ³³Genuine Nissan Accessory Roof Rail Crossbars have a maximum weight limit of 100 lbs. ³⁴Affiliated Yakima® accessories are not warranted by Nissan. Refer to product manufacturer for warranty details. Nissan Limited Warranty does not cover damages or failures to the vehicle caused by improper installation or alterations of any Nissan approved accessory or component. Contact your dealer/retailer for details. ³⁵Vehicle shown is for illustrative purposes only. Not representative of brochure's model year/model. ³⁶Brake Assist cannot prevent all collisions and may not provide warning or braking in all conditions. Driver should monitor traffic conditions and brake as needed to prevent collisions. See Owner's Manual for safety information. ³⁷Intelligent Cruise Control uses limited braking and is not a collision avoidance or warning system. Driver should monitor traffic conditions and brake as needed to prevent collisions. See Owner's Manual for safety information. ³⁸2021 EPA Fuel Economy Estimates. ²⁵ City MPG / 32 Highway MPG / 28 Combined MPG for Rogue Sport™ FWD; 24 City MPG / 30 Highway MPG / 27 Combined MPG for Rogue Sport AWD. Actual mileage may vary with driving conditions. Use for comparison only. ³⁹Roadside Assistance available for a period of 36 months/36,000 miles from the date the vehicle is delivered to the first retail buyer or otherwise put into use, whichever is earlier. Google, Android, Android Auto, YouTube and other marks are trademarks of Google LLC. Apple CarPlay®, Apple Music®, Siri® and Siri® Eyes Free are registered trademarks of Apple, Inc. Bluetooth® word mark and logos are owned by Bluetooth SIG, Inc., and any use of such marks by Nissan is under license. Bose® is a registered trademark of The Bose Corporation. Facebook® is a registered trademark of Facebook, Inc. HomeLink® is a registered trademark of Genex Corporation. iPhone® is a registered trademark of Apple, Inc. All rights reserved. iPhone® or other external device not included. The Sirius®, XM®, and SiriusXM® names and all related marks and logos are trademarks of Sirius XM Radio Inc. Twitter® is a registered trademark of Twitter, Inc. Yakima® is a registered trademark of Yakima Products, Inc. This brochure is intended for general descriptive and informational purposes only. It is subject to change and does not constitute an offer, representation or warranty (express or implied) by Nissan North America, Inc. Interested parties should confirm the accuracy of any information in this brochure as it relates to a vehicle directly with Nissan North America, Inc., before relying on it to make a purchase decision. Nissan North America, Inc., reserves the right to make changes, at any time, without prior notice, in prices, colors, materials, equipment, specifications, and models and to discontinue models or equipment. Due to continuous product development and other pre- and post-production factors, actual vehicle, materials and specifications may vary from this brochure. Some vehicles shown with optional equipment. See the actual vehicle for complete accuracy. Availability and delivery times for particular models or equipment may vary. Specifications, options and accessories may differ in Hawaii, U.S. territories and other countries. For additional information on availability, options or accessories, see your Nissan dealer or contact Nissan North America, Inc. At NissanUSA.com, you'll find virtual product demonstrations, a way to "build your own Nissan," a dealer locator, and more information about key Nissan support services. Or if you'd prefer, call 1-800-NISSAN-3 for answers to specific questions about Rogue Sport™ or any other Nissan vehicle. The Nissan names, logos, product names, feature names, and slogans are trademarks owned by or licensed to Nissan Motor Co. Ltd. and/or its North American subsidiaries. Other trademarks and trade names are those of their respective owners. **Always wear your seat belt, and please drive responsibly.** ©2020 Nissan North America, Inc. '21 Rogue Sport™ 2103250-N-12/20-60K-KSL



Cross over to progressive style and a commanding view of downtown. Commute with the confidence of driver assist technology that can respond to trouble before it messes with your plans.¹ Rain? Snow? Available Intelligent All-Wheel Drive is ready to react.² Seamlessly access podcasts, group chats, and more with available compatible smartphone integration.³ This is the 2021 Nissan Rogue Sport™.

HELPS KEEP YOU
CENTERED IN
GENTLE CURVES⁴

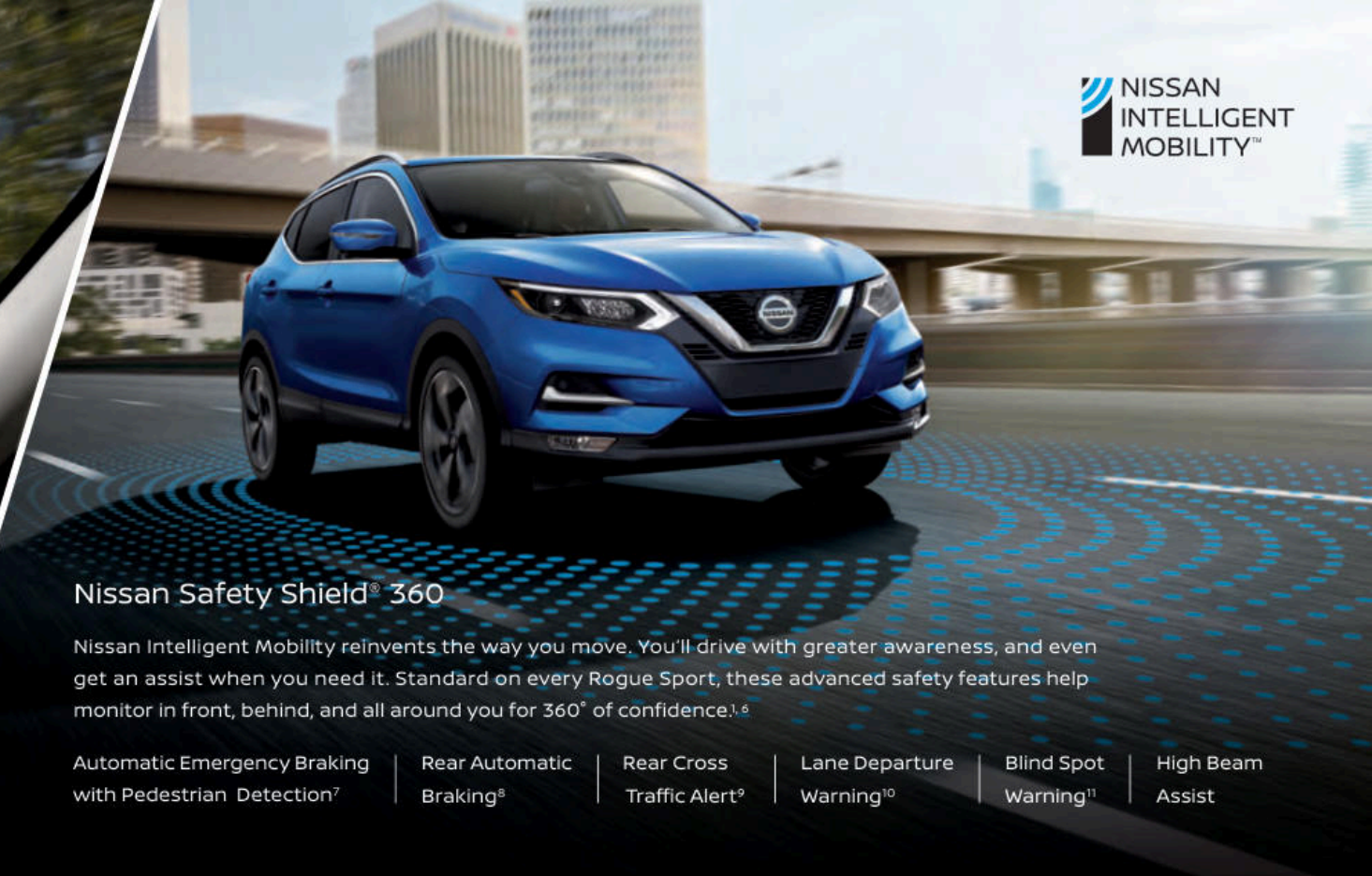
MAINTAINS YOUR
PRESET SPEED AND
DISTANCE⁴

CAN EVEN
COME TO A
COMPLETE STOP⁴



Nissan ProPILOT Assist

With available Nissan ProPILOT Assist, Rogue Sport™ helps out with daily highway driving – following the car ahead at a preset distance, or helping keep you centered in your lane. It can even bring your Rogue Sport to a full stop based on the traffic flow, and can bring you back up to speed when traffic starts moving again.⁴



Nissan Safety Shield® 360

Nissan Intelligent Mobility reinvents the way you move. You'll drive with greater awareness, and even get an assist when you need it. Standard on every Rogue Sport, these advanced safety features help monitor in front, behind, and all around you for 360° of confidence.^{1, 6}

Automatic Emergency Braking
with Pedestrian Detection⁷

Rear Automatic
Braking⁸

Rear Cross
Traffic Alert⁹

Lane Departure
Warning¹⁰

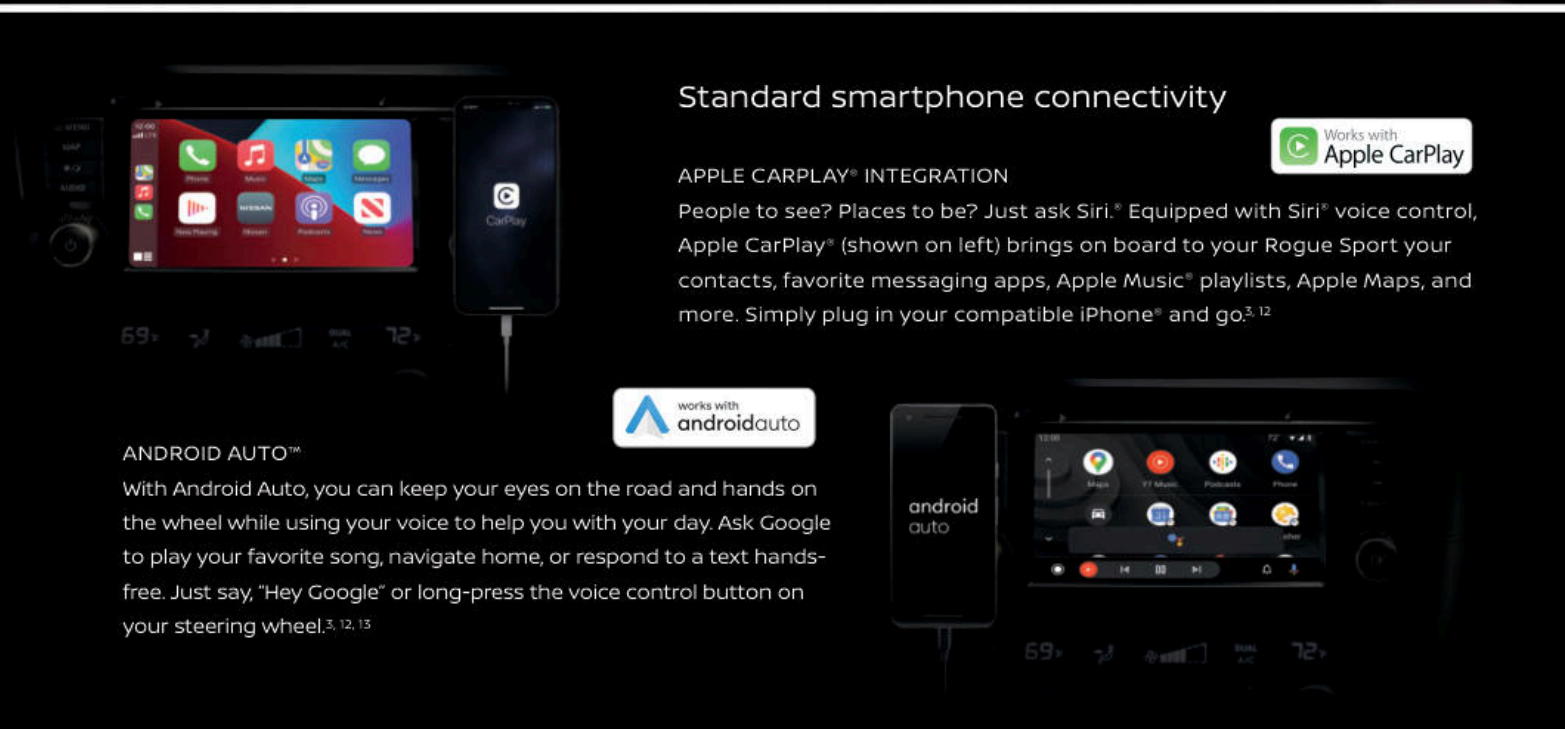
Blind Spot
Warning¹¹

High Beam
Assist



Intelligent Around View® Monitor

The available Intelligent Around View Monitor helps you squeeze into that spot with your pride and wheels intact. It also gives you an on-screen alert when it detects moving objects near your vehicle.⁵



Standard smartphone connectivity



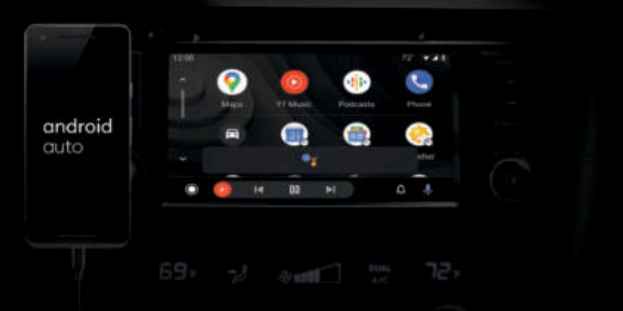
APPLE CARPLAY® INTEGRATION

People to see? Places to be? Just ask Siri.[®] Equipped with Siri[®] voice control, Apple CarPlay[®] (shown on left) brings on board to your Rogue Sport your contacts, favorite messaging apps, Apple Music[®] playlists, Apple Maps, and more. Simply plug in your compatible iPhone[®] and go.^{3, 12}

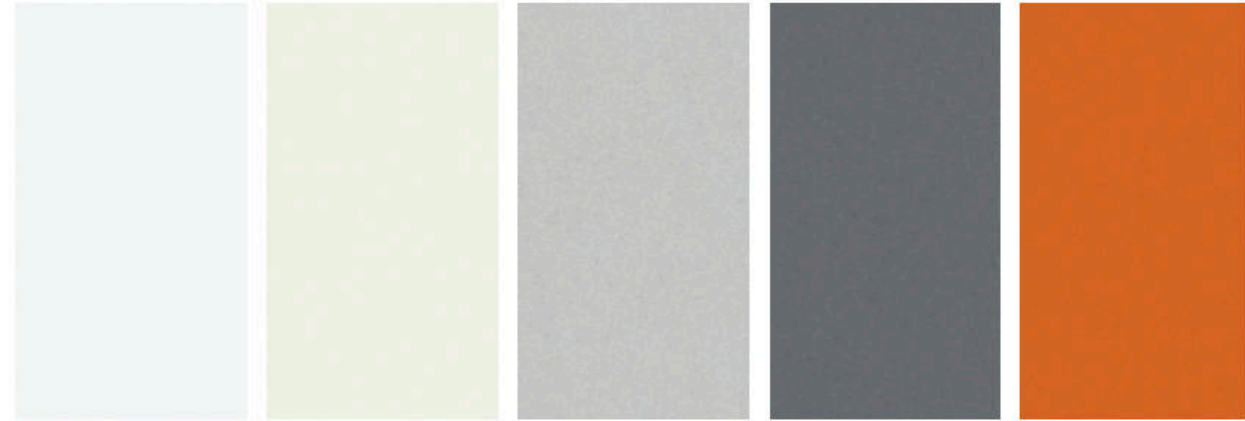


ANDROID AUTO™

With Android Auto, you can keep your eyes on the road and hands on the wheel while using your voice to help you with your day. Ask Google to play your favorite song, navigate home, or respond to a text hands-free. Just say, "Hey Google" or long-press the voice control button on your steering wheel.^{3, 12, 13}

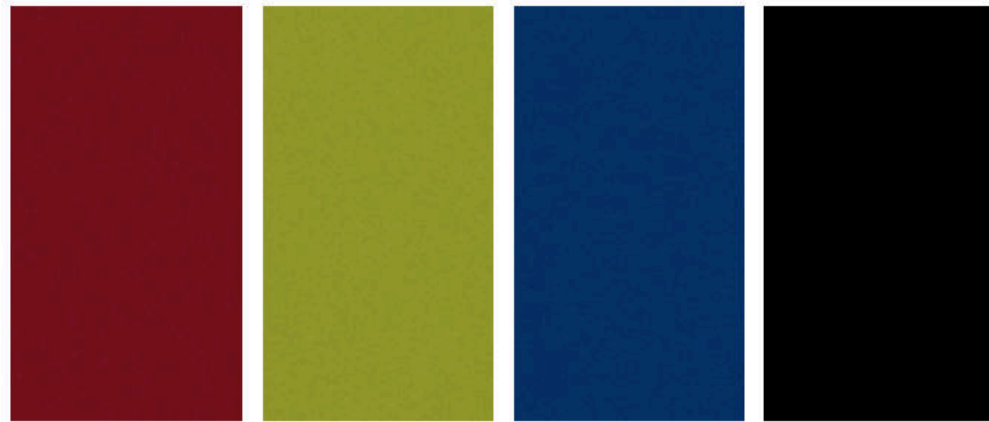


CHOOSE YOUR COLOR



Glacier White Pearl White TriCoat¹⁴ Brilliant Silver Metallic Gun Metallic Monarch Orange Metallic¹⁴

	S	SV	SL
CHARCOAL CLOTH	<input checked="" type="checkbox"/>		
PREMIUM LIGHT GRAY CLOTH		<input checked="" type="checkbox"/>	
PREMIUM CHARCOAL CLOTH		<input checked="" type="checkbox"/>	
LIGHT GRAY LEATHERETTE		<input type="checkbox"/>	
CHARCOAL LEATHERETTE		<input type="checkbox"/>	
LIGHT GRAY LEATHER ¹⁵			<input checked="" type="checkbox"/>
CHARCOAL LEATHER ¹⁵			<input checked="" type="checkbox"/>



Scarlet Ember Tintcoat¹⁴ Nitro Lime Metallic Caspian Blue Metallic Magnetic Black Pearl

	S	SV	SL
CHARCOAL CLOTH	<input checked="" type="checkbox"/>		
PREMIUM LIGHT GRAY CLOTH		<input checked="" type="checkbox"/>	
PREMIUM CHARCOAL CLOTH		<input checked="" type="checkbox"/>	
LIGHT GRAY LEATHERETTE		<input type="checkbox"/>	
CHARCOAL LEATHERETTE		<input type="checkbox"/>	
LIGHT GRAY LEATHER ¹⁵			<input checked="" type="checkbox"/>
CHARCOAL LEATHER ¹⁵			<input checked="" type="checkbox"/>

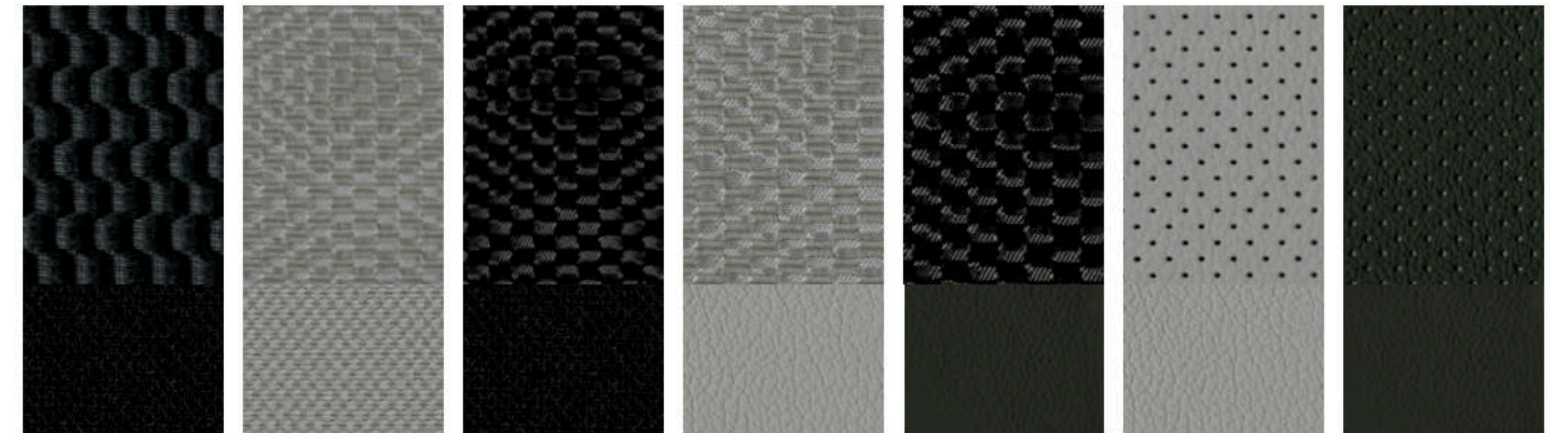
Standard
 Part of Technology Package

Nissan has taken care to ensure that the color swatches presented here are the closest possible representations of actual vehicle colors. Swatches may vary slightly due to the printing process and whether viewed in daylight, fluorescent or incandescent light. Please see the actual colors at your dealer.

CHOOSE YOUR INTERIOR



Rogue Sport™ SL shown in Charcoal Leather with optional equipment.¹⁵

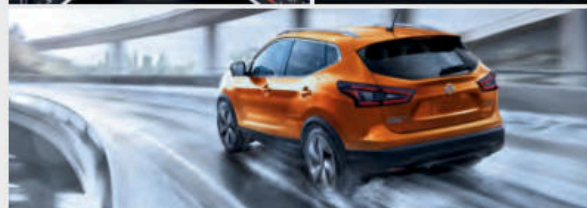


Charcoal Cloth S Premium Light Gray Cloth SV Premium Charcoal Cloth SV Light Gray Leatherette SV Charcoal Leatherette SV Light Gray Leather¹⁵ SL Charcoal Leather¹⁵ SL

CHOOSE YOUR TRIM LEVEL

S

- 2.0-liter 4-cylinder engine
- Xtronic CVT® (Continuously Variable Transmission)
- Eco Mode
- Available Intelligent All-Wheel Drive²
- Intelligent Forward Collision Warning¹⁶
- Automatic Emergency Braking with Pedestrian Detection⁷
- Lane Departure Warning¹⁰
- Intelligent Lane Intervention¹⁰
- Rear Automatic Braking⁸
- Rear Cross Traffic Alert⁹
- RearView Monitor²⁵
- Blind Spot Warning¹¹
- Rear Sonar System¹⁷
- High Beam Assist
- Rear Door Alert¹⁸
- Auto on/off headlights
- Active Ride Control
- Intelligent Trace Control¹⁹
- Intelligent Engine Brake
- 17" Aluminum-alloy wheels
- Halogen headlights with LED signature Daytime Running Lights
- Rear spoiler
- Body-color outside door handles
- Advanced Drive-Assist® Display^{20, 21}
- NissanConnect® 7" color touch-screen display¹²
- Voice Recognition²²
- Apple CarPlay® integration¹²
- Android Auto™¹²
- Hands-free Text Messaging Assistant¹³
- Bluetooth® Hands-free Phone System¹²
- AM/FM/CD audio system with four speakers
- Streaming Audio via Bluetooth®¹²
- USB connection port³
- SiriusXM® Radio with 3-month subscription included¹²
- Rear passenger air conditioning vents
- Integrated key with remote keyless entry
- Tilt and telescoping steering column
- Cruise control
- Variable intermittent front and intermittent rear windshield wipers
- 12-volt DC power outlet³
- Approach lighting
- Six cargo tie-down hooks²⁴
- 6-way manual driver's seat
- 60/40 2nd-row split folding seat
- Cloth seat trim
- Vehicle Dynamic Control (VDC)²⁵ with Traction Control System (TCS)
- Tire Pressure Monitoring System (TPMS) with Easy-Fill Tire Alert^{26, 27}
- Nissan Advanced Air Bag System²⁸



SV INCLUDES S EQUIPMENT PLUS:

- Fog lights
- Body-color power heated outside mirrors with LED turn signal indicators
- Roof rails²⁴
- Nissan Intelligent Key® with Push Button Ignition
- Remote Engine Start System with Intelligent Climate Control²⁹
- Dual Zone Automatic Temperature Control
- Dual illuminated visor vanity mirrors
- Premium cloth seat trim
- 8-way power driver's seat, including 2-way lumbar support
- Quick Comfort® heated front seats
- Heated leather-wrapped steering wheel
- Leather-wrapped shift knob
- AM/FM/CD audio system with six speakers
- Divide-N-Hide® Cargo System²⁴
- Cargo cover²⁴

AVAILABLE PACKAGE:

- Technology Package



SL INCLUDES SV EQUIPMENT PLUS:

- 19" Aluminum-alloy wheels
- Leather-appointed seats
- ProPILOT Assist⁴
- Traffic Sign Recognition³⁰
- Intelligent Around View® Monitor⁵
- Intelligent Driver Alertness³¹
- Nissan Door to Door Navigation with Premium Traffic^{12, 22}
- NissanConnect® Services powered by SiriusXM® with trial access to 3-year Select and 6-month Premium Plus packages¹²
- SiriusXM® Traffic and Travel Link with 3-month trial access¹²
- Front driver's seatback pocket
- Electronic Parking Brake
- Fog lights deleted as standard (available with Premium Package)

AVAILABLE PACKAGE:

- Premium Package



CHOOSE YOUR PACKAGE



TECHNOLOGY PACKAGE | SV

- ProPILOT Assist⁴
- Intelligent Around View[®] Monitor⁵
- Leatherette-trimmed seats

- Intelligent Driver Alertness³¹
- Driver's seat and outside mirror position memory
- Electronic Parking Brake



PREMIUM PACKAGE | SL

- Power sliding glass moonroof
- LED low- and high-beam headlights
- Auto-dimming interior rearview mirror with HomeLink[®] Universal Transceiver

- 4-way power front-passenger's seat
- Driver's seat and outside mirror position memory
- Bose Premium Audio System with subwoofer
- Fog lights

CHOOSE YOUR ACCESSORIES



A. Affiliated: Yakima® FatCat EVO 6 Ski Rack^{24, 33, 34, 35}
Get out of town with your board and skis in tow.

B. Illuminated Kick Plates
Step inside and light 'em up.

C. Dual Rear USB Rapid Charging Ports³
The second row stays charged up and 100%.

D. All-Season Floor Mats
Stepping in from the rain or snow? We've got you covered.

E. 17" Aluminum-alloy Wheels
Edgy style for your Rogue Sport.

F. Impact Sensor
Keep your Rogue Sport alarmed, so you don't have to be.

G. All-Season Cargo Area Protector (2-piece)²⁴
Protect your interior from the elements.

H. 19" Aluminum-alloy Wheels
Cruise with some attitude.

Additional Accessories:

- All-Season Cargo Area Protector (1-piece)²⁴
- Carpeted Floor Mats
- Carpeted Cargo Area Protector²⁴
- Hatch Tent
- Cargo Net²⁴
- Frameless Auto-dimming Rearview Mirror with Universal Remote
- Cargo Blocks/Stabilizers²⁴
- And More

For more information and to shop online for Rogue Sport™ Genuine Nissan Accessories, go to bit.ly/21RogueSport-Accy

NISSAN ROGUE SPORT™ ACCESSORIES

Turn brand-new into all you

Every **Genuine Nissan Accessory** is custom-fit, custom-designed and durability-tested. Each one is backed by Nissan's 3-year/36,000-mile (whichever occurs first) limited warranty (if installed by dealer at the time of purchase), and can be financed when installed by dealer at time of purchase.³² **Affiliated Yakima®** accessories are not warranted by Nissan. Refer to product manufacturer for warranty details. Nissan Limited Warranty does not cover damages or failures to the vehicle caused by improper installation or alterations of any Nissan approved accessory or component. Contact your dealer/retailer for details.



Nissan Rogue Sport™ SV AWD shown in Pearl White TriCoat with 17" Gloss Black Aluminum-alloy Wheels, Roof Rail Crossbars^{24, 33} Side-Window Deflectors, Gloss Black Rear Glass Finisher, Chrome Rear Bumper Protector, Gloss Black Door Side Sill Strips, Exterior Ground Lighting, and Splash Guards.

SPECIFICATIONS

Engine	S	SV	SL
2.0-liter DOHC 16-valve 4-cylinder	■	■	■
— Horsepower – 141 hp @ 6,000 rpm			
— Torque – 147 lb-ft @ 4,400 rpm			
Continuously Variable Valve Timing Control System (CVTCS) on intake and exhaust valves	■	■	■
Nissan Direct Ignition System with double platinum-tipped spark plugs	■	■	■
Eco Mode	■	■	■

Drivetrain	S	SV	SL
Front-Wheel Drive (FWD)	■	■	■
Intelligent All-Wheel Drive (AWD) ²	□	□	□
Xtronic CVT [®] (Continuously Variable Transmission)	■	■	■

Brakes	S	SV	SL
4-wheel vented disc brakes	■	■	■
4-wheel Anti-lock Braking System (ABS)	■	■	■
Electronic Brake force Distribution (EBD)	■	■	■
Brake Assist ⁵⁶	■	■	■
Electronic Parking Brake		T	■

Suspension/Chassis Bracing/Steering	S	SV	SL
Independent strut front suspension	■	■	■
Independent multi-link rear suspension	■	■	■
Front and rear stabilizer bars	■	■	■
Vehicle-speed-sensitive electric power steering with Sport Mode	■	■	■

Driver Assistance Technologies	S	SV	SL
Cruise control	■	■	
Intelligent Cruise Control ³⁷		T	■
ProPILOT Assist ⁴		T	■
Intelligent Forward Collision Warning ¹⁶	■	■	■
Automatic Emergency Braking with Pedestrian Detection ⁷	■	■	■
Lane Departure Warning ¹⁰	■	■	■
Intelligent Lane Intervention ¹⁰	■	■	■
Blind Spot Warning ¹¹	■	■	■
Rear Cross Traffic Alert ⁹	■	■	■
RearView Monitor ²³	■	■	■
Intelligent Around View [®] Monitor ⁵		T	■
Rear Sonar System ¹⁷	■	■	■
Rear Automatic Braking ⁸	■	■	■
High Beam Assist	■	■	■
Vehicle Dynamic Control (VDC) ²⁵ with Traction Control System (TCS)	■	■	■
Active Ride Control	■	■	■
Hill start assist	■	■	■
Intelligent Engine Brake	■	■	■
Intelligent Trace Control ¹⁹	■	■	■
Intelligent Driver Alertness ³¹		T	■
Traffic Sign Recognition ³⁰			■

Wheels/Tires	S	SV	SL
17" x 7.0" aluminum-alloy wheels	■	■	
19" x 7.0" aluminum-alloy wheels			■
P215/60R17 all-season tires	■	■	
P225/45R19 all-season tires			■

Exterior Features	S	SV	SL
Halogen headlights	■	■	■
LED Daytime Running Lights	■	■	■
LED low- and high-beam headlights			P
Auto on/off headlights	■	■	■
Fog lights		■	P
Body-color outside door handles	■	■	■
Body-color power outside mirrors	■		
Body-color power heated outside mirrors with LED turn signal indicators		■	■
Approach lighting	■	■	■
Roof rails ²⁴	■	■	■
Rear spoiler	■	■	■
Black wheel arch moldings and rocker panels	■	■	■
Power sliding glass moonroof			P
UV-reducing solar glass	■	■	■

Comfort/Convenience	S	SV	SL
Air conditioning with in-cabin filter	■		
Dual Zone Automatic Temperature Control		■	■
Rear passenger air conditioning vents	■	■	■
Power windows with driver's one-touch auto-up/down feature	■	■	■
Power door locks with auto-locking feature	■	■	■
Integrated key with remote keyless entry	■		
Nissan Intelligent Key [®] with Push Button Ignition		■	■
Remote Engine Start System with Intelligent Climate Control ²⁹		■	■
Tilt and telescoping steering column	■	■	■
Rear Door Alert ¹⁸	■	■	■
Variable intermittent windshield wipers	■	■	■
Intermittent rear window wiper	■	■	■
12-volt DC power outlet ³	■	■	■
Sun visors with vanity mirrors and extensions	■	■	■
Dual illuminated visor vanity mirrors		■	■
Overhead LED map lights	■	■	■
Overhead sunglasses storage	■	■	■
Front center console	■	■	■
Rear-seat center armrest	■	■	■
Front driver's seatback pocket		■	■
Four cup holders and four bottle holders	■	■	■
Six cargo tie-down hooks ²⁴	■	■	■
Divide-N-Hide [®] Cargo System ²⁴		■	■
Cargo cover ²⁴		■	■
Auto-dimming inside rearview mirror with HomeLink [®] Universal Transceiver			P

Seating/Appointments	S	SV	SL
6-way manual driver's seat	■		
8-way power driver's seat, including 2-way lumbar support		■	■
4-way manual front-passenger's seat	■	■	■
4-way power front-passenger's seat			P
60/40 2nd-row split folding seat	■	■	■
Cloth seat trim	■		
Premium cloth seat trim		■	
Leatherette-appointed seats		T	
Leather-appointed seats			■
Quick Comfort [®] heated front seats	■	■	■
Driver's seat and outside mirrors position memory		T	P
Heated leather-wrapped steering wheel		■	■
Leather-wrapped shift knob		■	■

Infotainment	S	SV	SL
AM/FM/CD audio system with four speakers	■		
AM/FM/CD audio system with six speakers		■	
Bose Premium Audio System with subwoofer			P
Advanced Drive-Assist [®] Display ^{20, 21}	■	■	■
Nissan Door to Door Navigation with Premium Traffic ^{12, 22}			■
NissanConnect [®] Services powered by SiriusXM [®] with trial access to 3-year Select and 6-month Premium Plus packages ¹²			■
NissanConnect [®] 7" color touch-screen display ¹²	■	■	■
Voice Recognition ²²	■	■	■
Apple CarPlay [®] integration ¹²	■	■	■
Android Auto ^{™12}	■	■	■
SiriusXM [®] Traffic and Travel Link with 3-month trial access ¹²	■	■	■
Hands-free Text Messaging Assistant ¹³	■	■	■
Bluetooth [®] Hands-free Phone System ¹²	■	■	■
MP3/WMA CD playback capability	■	■	■
Auxiliary audio input jack ³	■	■	■
USB connection port ³	■	■	■
Streaming Audio via Bluetooth ^{®12}	■	■	■
SiriusXM [®] Radio with 3-month subscription included ¹²	■	■	■
Radio Data System (RDS)	■	■	■
Speed-sensitive volume control	■	■	■
Illuminated steering wheel-mounted audio controls	■	■	■

Safety/Security	S	SV	SL
Nissan Advanced Air Bag System with dual-stage supplemental front air bags with occupant-classification sensors ²⁸	■	■	■
Driver and front-passenger supplemental knee air bag ²⁸	■	■	■
Driver and front-passenger seat-mounted side-impact supplemental air bags ²⁸	■	■	■
Rear passenger door-mounted side-impact supplemental air bags for outboard occupants ²⁸	■	■	■
Roof-mounted curtain supplemental air bags with rollover sensor for side-impact head protection for front and rear-seat outboard occupants ²⁸	■	■	■
3-point ELR driver and passenger seat belt system	■	■	■
LATCH System (Lower Anchors and Tethers for Children)	■	■	■
Tire Pressure Monitoring System (TPMS) with Easy-Fill Tire Alert ^{26, 27}	■	■	■

DIMENSIONS/CAPACITIES/WEIGHTS/MPG

Exterior Dimensions - Inches	
Exterior	
Wheelbase	104.2
Overall length	172.8
Overall width	72.3
Overall height	62.5
Track width (front/rear)	62.4/62.2

Interior Dimensions - Inches	
Interior	
Head room without moonroof (front/rear)	39.6/38.3
Head room with moonroof (front/rear)	38.8/38.5
Leg room (front/rear)	42.8/33.4
Hip room (front/rear)	53.4/46.9
Shoulder room (front/rear)	56.6/55.7
Step-in height (front/rear)	17.1/17.8

Capacities	
Seating capacity	5
Interior passenger volume without moonroof (cu. ft.)	96.0
Interior passenger volume with moonroof (cu. ft.)	94.3
Cargo capacity with 2nd row upright (cu. ft.) ²⁴	22.9/20.0/20.0 (19.9 with moonroof)
Cargo capacity with rear seats folded down (cu. ft.) ²⁴	61.1/53.3/53.3 (53.0 with moonroof)
Fuel tank (gals.)	14.5

Curb Weights - Lbs.			
	S	SV	SL
FWD	3,307	3,349	3,397
AWD	3,428	3,477	3,488

2021 EPA Fuel Economy Estimates ³⁴			
City/Hwy/Combined MPG			
FWD	25/32/28		
AWD	24/30/27		

NISSAN ROADSIDE ASSISTANCE

Your peace of mind is on us. For 36 months or 36,000 miles, whichever comes first, your new Nissan vehicle is covered for the following:³⁹

- Flat-tire changes
- Trip Interruption benefits
- Jump starts
- Vehicle lockouts
- Emergency fuel delivery

Follow Nissan on:



visit [NissanUSA.com/roguesport](https://www.nissanusa.com/roguesport)

PRINTED IN POLAND