

NISSAN INTELLIGENT MOBILITY™

Nissan Intelligent Mobility guides everything we do. We're using new technologies to transform cars from mere driving machines into assistants. Together the journey is more confident, connected, and exciting. Whether it's cars that assist in the task of driving, or highways that charge your EV as you go along, it's all in the very near future. And it's a future already taking shape in the Nissan you drive today.



Innovation
that excites


2019
ROGUE®

SEE ROGUE® COME TO LIFE

Go to NissanUSA.com and find an interactive brochure for Rogue and every Nissan in the lineup. Available on desktop, smartphone, or tablet, it's the full product story – including demos, videos, and complete info on trims, colors, and accessories.



¹Availability of features varies by model year, model, trim, and package. ²Automatic Emergency Braking with Pedestrian Detection cannot prevent all collisions and may not provide warning or braking in all conditions. Driver should monitor traffic conditions and brake as needed to prevent collisions. See Owner's Manual for safety information. ³Available feature. ⁴Rear Automatic Braking cannot prevent all collisions and may not provide warning or braking in all conditions. Driver should monitor traffic conditions and brake as needed to prevent collisions. See Owner's Manual for safety information. ⁵Blind Spot Warning cannot prevent collisions and may not detect every object or warn in all situations. Driver should always turn and look before changing lanes. See Owner's Manual for safety information. ⁶Rear Cross Traffic Alert may not detect all vehicles. See Owner's Manual for safety information. ⁷Intelligent Lane Intervention operates only when lane markings are able to be detected. See Owner's Manual for safety information. ⁸ProPILOT Assist cannot prevent collisions. Always monitor traffic conditions and keep both hands on the steering wheel. See Owner's Manual for safety information. ⁹Cargo shown for display purposes only. Cargo and load capacity limited by weight and distribution. Always secure cargo. Heavy loading of the vehicle with cargo, especially on the roof, will affect the handling and stability of the vehicle. ¹⁰Extra cost option. ¹¹Intelligent Trace Control cannot prevent collisions or loss of control. Driver should remain in control of vehicle at all times. See Owner's Manual for safety information. ¹²Available services/features may be shown. Compatible connected device may be required. Only use services/features and device when safe and legal to do so. Subject to GPS and wireless network availability and connection, and system/technology limitations. Text rates/data usage/subscription may apply. Some services/features provided by companies not within Nissan or its partners' or agents' control and may be discontinued at any time. For more information, see dealer, Owner's Manual, or NissanUSA.com/connect/important-information. Terms and conditions of Subscriber Agreement apply. NissanConnect EV features are provided by Nissan North America, Sirius XM Connected Vehicle Services Inc. ("Sirius XM"), partners with Nissan North America to provide NissanConnect Services powered by SiriusXM. All stated terms, disclosures and limitations of liability associated with connected vehicle services extend to Sirius XM and its affiliate, Sirius XM Radio Inc. SiriusXM is a registered trademark of Sirius XM Radio Inc. ¹³Driving is serious business and requires your full attention. If you have to use the feature while driving, exercise extreme caution at all times so full attention may be given to vehicle operation. ¹⁴Information displayed is dependent on how vehicle is equipped. ¹⁵Use Hands Free Text Messaging when parked in a safe location. If you must use while driving, monitor traffic conditions and keep both hands on the steering wheel to prevent collisions. Compatible device required. Message and data rates may apply. ¹⁶Driving is serious business and requires your full attention. If you have to use the connected device while driving, exercise extreme caution at all times so full attention may be given to vehicle operation. ¹⁷See Owner's Manual for safety information. ¹⁸RearView Monitor may not detect every object and does not eliminate blind spots or warn of moving objects. See Owner's Manual for safety information. ¹⁹Air bags are only a supplemental restraint system. Always wear your seat belt. Rear-facing child restraints should not be placed in the front-passenger's seat. All children 12 and under should ride in the rear seat properly secured in child restraints, booster seats, or seat belts according to their size. Air bags will only inflate in certain accidents. See Owner's Manual for safety information. ²⁰Tire Pressure Monitoring System is not a substitute for regular tire pressure checks. See Owner's Manual for safety information. ²¹Vehicle must be on for the Easy-Fill Tire Alert to operate. ²²State laws may apply. Review before using. ²³The optional Rear Sonar System is a convenience, but is not a substitute for proper backing procedures. Always turn and check that it is safe to do so before backing up. May not detect every object behind you. ²⁴Never program while driving. GPS mapping may not be detailed in all areas or reflect current road status. ²⁵Intelligent Cruise Control uses limited braking and is not a collision avoidance or warning system. Driver should monitor traffic conditions and brake as needed to prevent collisions. See Owner's Manual for safety information. ²⁶Intelligent Around View® Monitor cannot eliminate blind spots and may not detect every object. Driver should always turn and check surroundings before driving. See Owner's Manual for safety information. ²⁷Genuine Nissan Accessories are covered by Nissan's Limited Warranty on Genuine Nissan Replacement Parts, Genuine NISMO® S-Tune Parts, and Genuine Nissan Accessories for the longer of 12 months/12,000 miles (whichever occurs first) or the remaining period under the 3-year/36,000-mile (whichever occurs first) Nissan New Vehicle Limited Warranty. Terms and conditions apply. See dealer, Warranty Information Booklet, or parts.NissanUSA.com for details. ²⁸Please follow Towing Guidelines. Towing capability varies by configuration. See Nissan Towing Guide and Owner's Manual for additional information. ²⁹Brake Assist cannot prevent all collisions and may not provide warning or braking in all conditions. Driver should monitor traffic conditions and brake as needed to prevent collisions. See Owner's Manual for safety information. ³⁰Vehicle Dynamic Control cannot prevent collisions due to abrupt steering, carelessness, or dangerous driving techniques. It should remain on when driving, except when freeing the vehicle from mud or snow. See Owner's Manual for safety information. ³¹Hybrid models. ³²Non-hybrid models only. ³³2018 EPA fuel economy estimates shown. 2019 EPA estimates not available at time of printing. Actual mileage may vary with driving conditions - use for comparison only. ³⁴For a period of 36 months/36,000 miles from the date the vehicle is delivered to the first retail buyer or otherwise put into use, whichever is earlier. Android Auto™ is a trademark of Google, Inc. Apple CarPlay™ is a trademark of Apple, Inc. Bluetooth® is a registered trademark of Bluetooth SIG, Inc. Bose® is a registered trademark of The Bose Corporation. HomeLink® is a registered trademark of Genetec Corporation. The Sirius®, XM®, and SiriusXM® names and all related marks and logos are trademarks of Sirius XM Radio Inc. All other trademarks are the property of their respective owners. This brochure is intended for general descriptive and informational purposes only. It is subject to change and does not constitute an offer, representation or warranty (express or implied) by Nissan North America, Inc. Interested parties should confirm the accuracy of any information in this brochure as it relates to a vehicle directly with Nissan North America, Inc., before relying on it to make a purchase decision. Nissan North America, Inc., reserves the right to make changes, at any time, without prior notice, in prices, colors, materials, equipment, specifications, and models and to discontinue models or equipment. Due to continuous product development and other pre- and post-production factors, actual vehicle, materials and specifications may vary from this brochure. Some vehicles shown with optional equipment. See the actual vehicle for complete accuracy. Availability and delivery times for particular models or equipment may vary. Specifications, options and accessories may differ in Hawaii, U.S. territories and other countries. For additional information on availability, options or accessories, see your Nissan dealer or contact Nissan North America, Inc. At NissanUSA.com, you'll find virtual product demonstrations, a way to "build your own Nissan," a dealer locator, and more information about key Nissan support services. Or if you'd prefer, call 1-800-NISSAN-3 for answers to specific questions about Rogue® or any other Nissan vehicle. The Nissan names, logos, product names, feature names, and slogans are trademarks owned by or licensed to Nissan Motor Co. Ltd. and/or its North American subsidiaries. Other trademarks and trade names are those of their respective owners. **Always wear your seat belt, and please drive responsibly.** ©2018 Nissan North America, Inc. '19 Rogue®. 1922563-N-7/18-100K-CG1

A silver Nissan Rogue SL AWD is shown from a rear three-quarter view, parked on a paved road that curves to the right. The car is positioned in the lower-left to center of the frame. The background features a scenic landscape with a mountain range under a clear blue sky, and a bright sun setting behind the mountains, creating a warm, golden glow. The car's rear features include a chrome bumper protector, a license plate that reads "HME 792", and "ROGUE" and "SL AWD" badges. The wheels are multi-spoke alloy wheels.

Connect to a bigger, bolder world in a capable crossover with the latest technology. Adapt for adventure and go forward with confidence. It's all part of Nissan Intelligent Mobility™¹ – our commitment to reinventing every part of your drive. The 2019 Nissan Rogue®. Tech that moves you.

Nissan Rogue® SL AWD shown in Gun Metallic with accessory Chrome Rear Bumper Protector.

NISSAN SAFETY SHIELD® 360

Nissan Intelligent Mobility reinvents the way you move. You'll drive with greater awareness, and even get an assist when you need it. Standard on Rogue®, these advanced safety features monitor in front, behind, and all around you for 360° of confidence.¹

Automatic Emergency Braking with Pedestrian Detection²

Rear Automatic Braking³,⁴

Blind Spot Warning⁵

Rear Cross Traffic Alert⁶

Intelligent Lane Intervention⁷



NISSAN ProPILOT ASSIST

Relax, and look forward to your daily commute. With available Nissan ProPILOT Assist, Rogue® helps out with highway driving - following the car ahead at a preset distance, or helping keep you centered in your lane. It can even bring your Rogue to a full stop based on the traffic flow, and can bring you back up to speed when traffic starts moving again.⁸



NISSAN MOTION ACTIVATED LIFTGATE

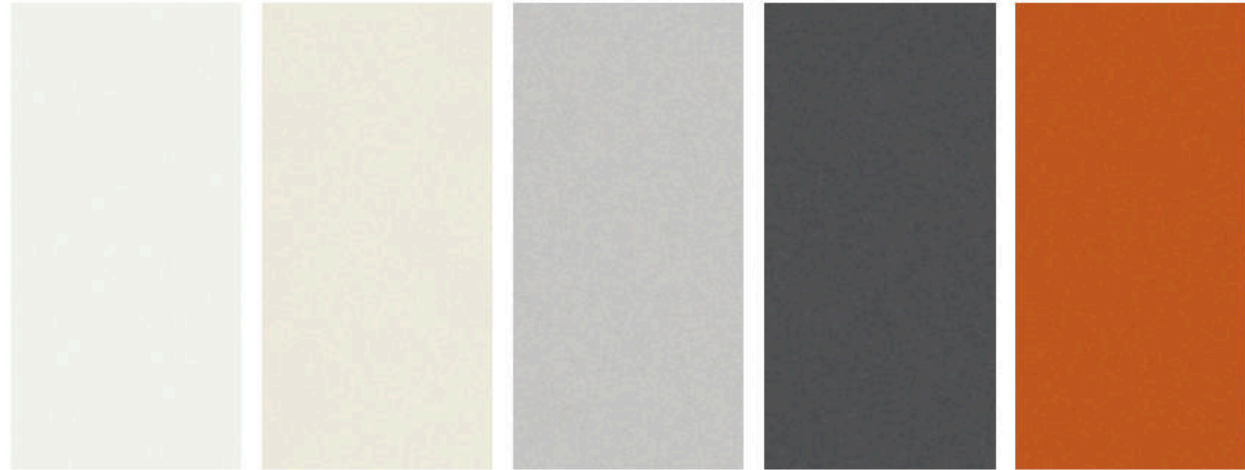
Arms full? Just kick under the rear bumper to open the available Motion Activated Liftgate, without reaching for a key or juggling whatever you're carrying.⁹



NISSAN DIVIDE-N-HIDE®

Single-handedly reinventing capability, the Divide-N-Hide cargo system lets you adapt in a snap. An adjustable set of shelves and dividers gives you a variety of configurations, and it's so easy, you can do it with one hand.⁹

CHOOSE YOUR COLOR



Glacier White Pearl White TriCoat¹⁰ Brilliant Silver Metallic Gun Metallic Monarch Orange Metallic¹⁰

S SV HYBRID SL HYBRID

	S	SV	HYBRID	SL	HYBRID
ALMOND CLOTH					
ALMOND LEATHER					
CHARCOAL CLOTH	■				
CHARCOAL LEATHER					
TAN LEATHER					

S SV HYBRID SL HYBRID

	S	SV	HYBRID	SL	HYBRID
ALMOND CLOTH					
ALMOND LEATHER					
CHARCOAL CLOTH	■	■			
CHARCOAL LEATHER					
TAN LEATHER					

S SV HYBRID SL HYBRID

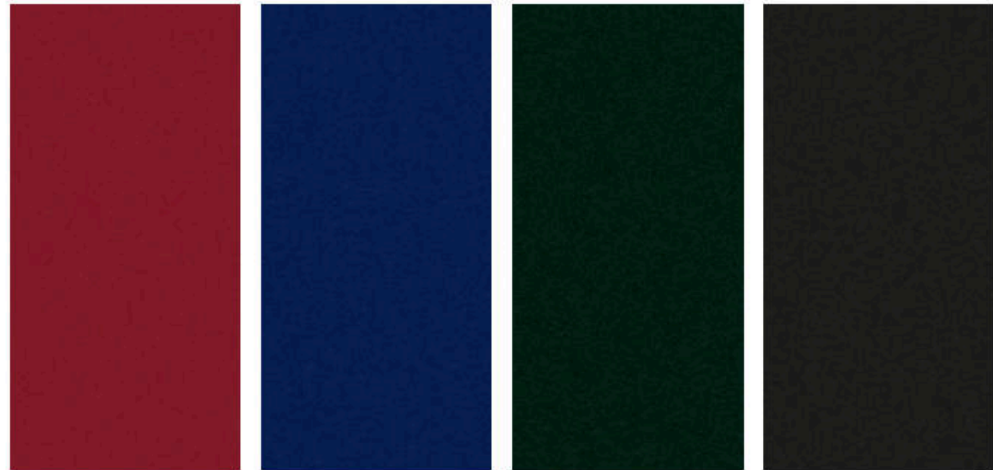
	S	SV	HYBRID	SL	HYBRID
ALMOND CLOTH					
ALMOND LEATHER					
CHARCOAL CLOTH	■	■			
CHARCOAL LEATHER					
TAN LEATHER					

S SV HYBRID SL HYBRID

	S	SV	HYBRID	SL	HYBRID
ALMOND CLOTH					
ALMOND LEATHER					
CHARCOAL CLOTH	■	■	■		
CHARCOAL LEATHER					
TAN LEATHER					

S SV HYBRID SL HYBRID

	S	SV	HYBRID	SL	HYBRID
ALMOND CLOTH					
ALMOND LEATHER					
CHARCOAL CLOTH	■				
CHARCOAL LEATHER					
TAN LEATHER					



Scarlet Ember Tintcoat¹⁰ Caspian Blue Metallic Midnight Pine Metallic Magnetic Black Pearl

S SV HYBRID SL HYBRID

	S	SV	HYBRID	SL	HYBRID
ALMOND CLOTH					
ALMOND LEATHER					
CHARCOAL CLOTH	■				
CHARCOAL LEATHER					
TAN LEATHER					

S SV HYBRID SL HYBRID

	S	SV	HYBRID	SL	HYBRID
ALMOND CLOTH					
ALMOND LEATHER					
CHARCOAL CLOTH	■	■			
CHARCOAL LEATHER					
TAN LEATHER					

S SV HYBRID SL HYBRID

	S	SV	HYBRID	SL	HYBRID
ALMOND CLOTH					
ALMOND LEATHER					
CHARCOAL CLOTH	■				
CHARCOAL LEATHER					
TAN LEATHER					

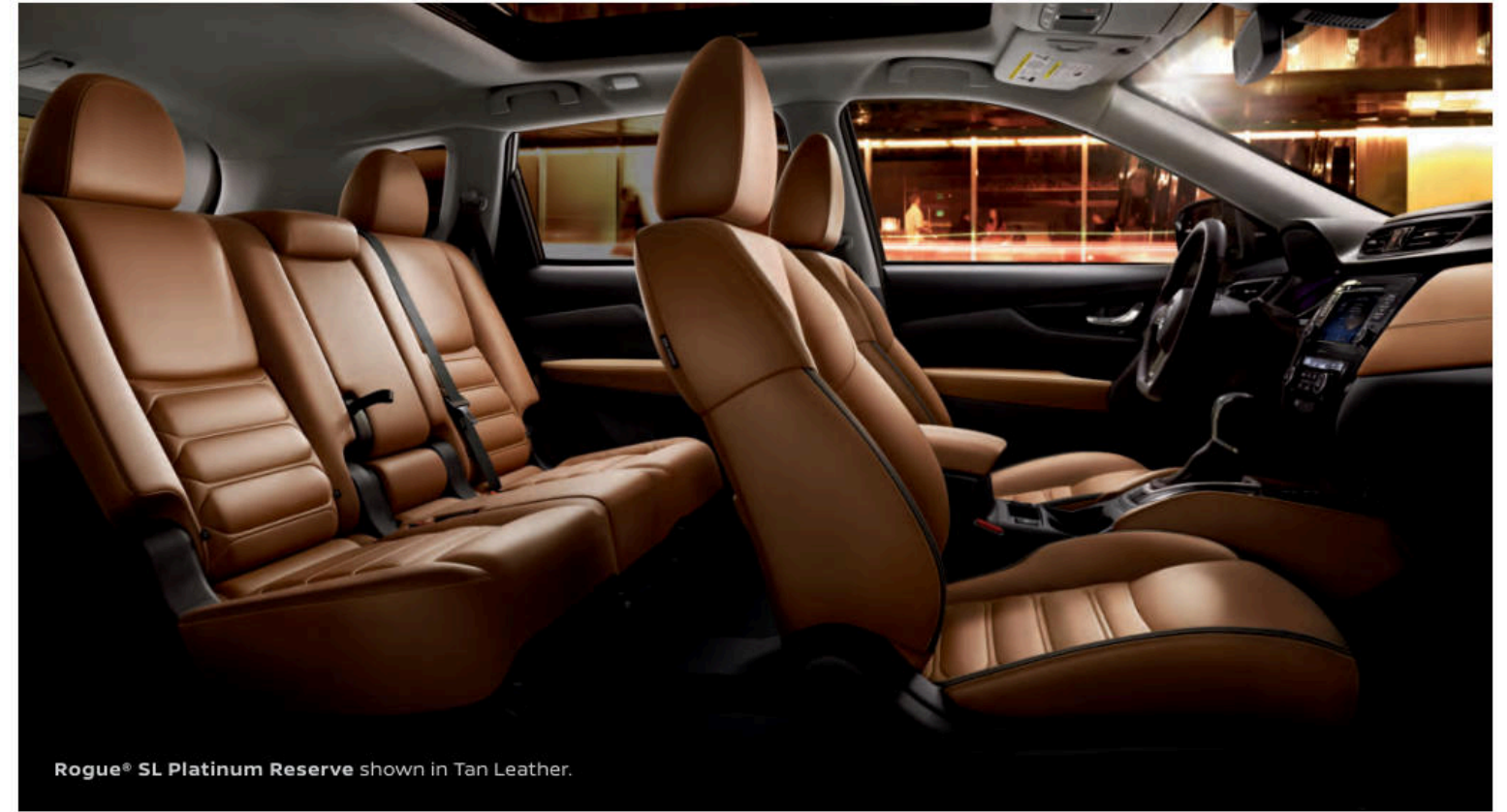
S SV HYBRID SL HYBRID

	S	SV	HYBRID	SL	HYBRID
ALMOND CLOTH					
ALMOND LEATHER					
CHARCOAL CLOTH	■	■	■		
CHARCOAL LEATHER					
TAN LEATHER					

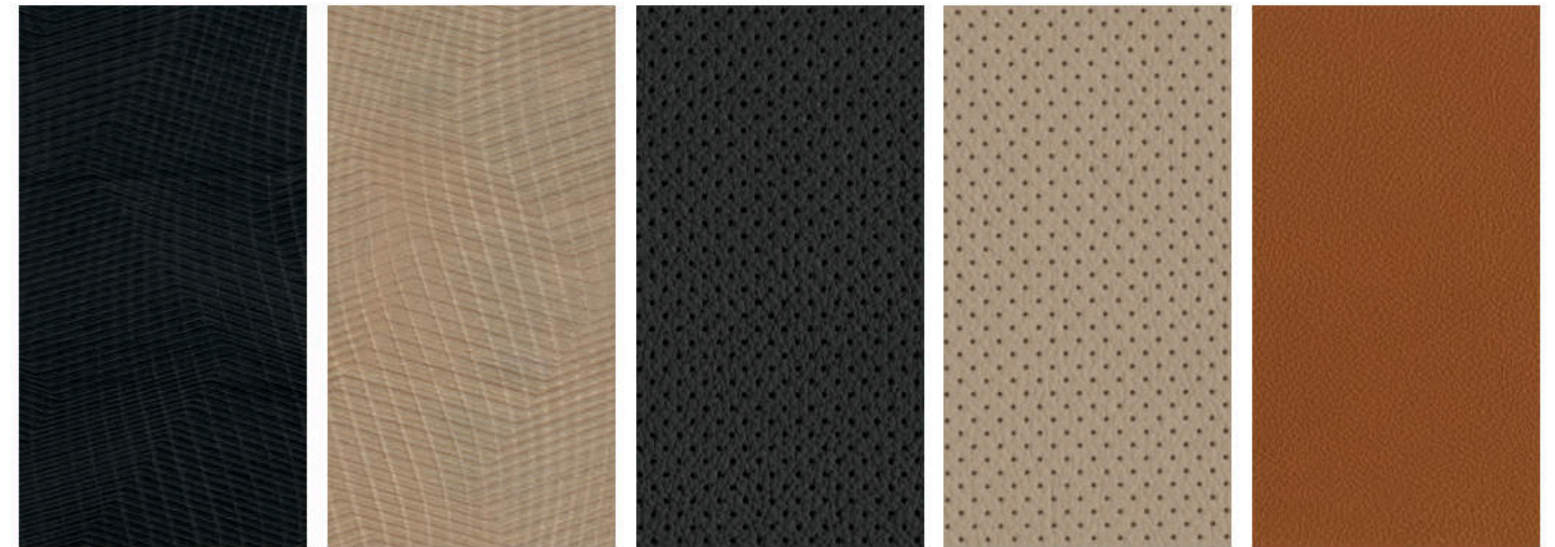
■ Standard
□ Optional

Nissan has taken care to ensure that the color swatches presented here are the closest possible representations of actual vehicle colors. Swatches may vary slightly due to the printing process and whether viewed in daylight, fluorescent or incandescent light. Please see the actual colors at your dealer.

CHOOSE YOUR INTERIOR



Rogue[®] SL Platinum Reserve shown in Tan Leather.



Charcoal Cloth
S|SV|SV Hybrid

Almond Cloth
SV

Charcoal Leather
SL|SL Hybrid

Almond Leather
SL

Tan Leather
SL Platinum Reserve

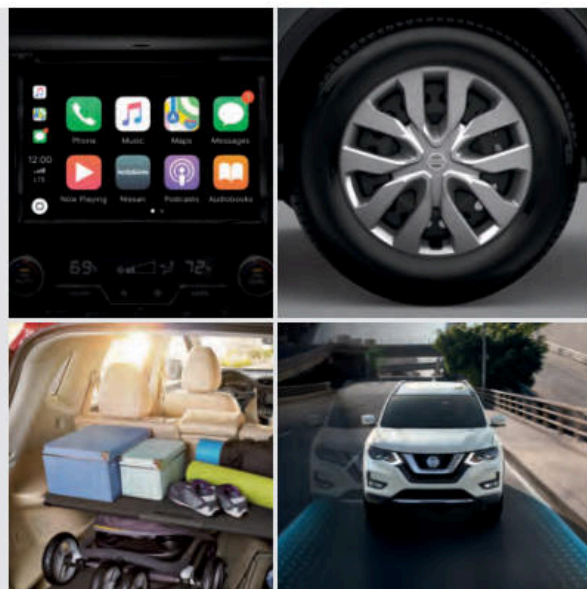
CHOOSE YOUR TRIM LEVEL

S

- 2.5-liter DOHC 16-valve 4-cylinder engine
- Xtronic CVT® (Continuously Variable Transmission) with Sport Mode Shifter
- Eco Mode
- Available Intelligent All-Wheel Drive
- Hill start assist
- Intelligent Trace Control,¹¹ Intelligent Engine Brake, Active Ride Control
- 17" Steel wheels with wheel covers
- LED Daytime Running Lights
- Intelligent Auto Headlights
- High Beam Assist headlights
- Power outside mirrors
- NissanConnect® 7" touch-screen display¹²
- Advanced Drive-Assist® Display^{13, 14}
- Apple CarPlay™¹²
- Android Auto™¹²
- Bluetooth® Hands-free Phone System¹²
- Hands-free Text Messaging Assistant¹⁵
- Bluetooth® streaming audio¹²
- SiriusXM® Radio¹²
- Two USB ports¹⁶
- Rear Door Alert¹⁷
- RearView Monitor¹⁸
- Cloth seat trim
- Four cargo tie-down hooks⁹
- Divide-N-Hide® Cargo System⁹
- EZ FLEX® Seating System with 2nd-row split folding/sliding/reclining seat with pass-through
- Blind Spot Warning⁵
- Rear Cross Traffic Alert⁶
- Automatic Emergency Braking with Pedestrian Detection²
- Intelligent Lane Intervention⁷
- Nissan Advanced Air Bag System¹⁹
- Tire Pressure Monitoring System (TPMS) with individual tire pressure display and Easy-Fill Tire Alert^{20, 21}

AVAILABLE PACKAGE:

- Special Edition Package



SV INCLUDES EQUIPMENT PLUS

- 17" Aluminum-alloy wheels
- Power heated outside mirrors with LED turn signal indicators
- Roof rails⁹
- Motion Activated Liftgate
- Rear privacy glass
- Chrome outside door handles
- Dual Zone Automatic Temperature Control
- Nissan Intelligent Key® with Push Button Ignition
- Remote Engine Start System with Intelligent Climate Control²²
- Rear Sonar System²³
- AM/FM/CD audio system with six speakers
- 8-way power driver's seat with 2-way lumbar support
- Quick Comfort® heated front seats
- Leather-wrapped steering wheel
- Leather-wrapped shift knob
- Rear Automatic Braking⁴

AVAILABLE PACKAGES:

- Premium Package
- Sun and Sound Touring Package

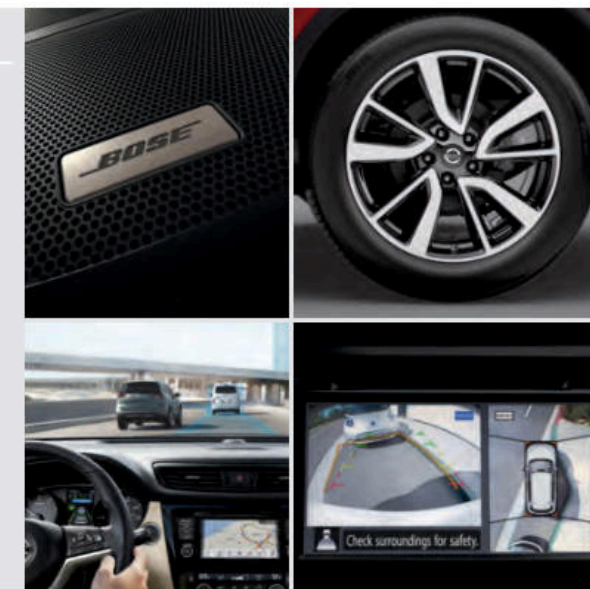


SL INCLUDES SV EQUIPMENT PLUS:

- 19" Aluminum-alloy wheels
- Fog lights
- Nissan Door to Door Navigation with Premium Traffic²⁴
- NissanConnect® Services powered by SiriusXM® with complimentary trial access to 3-year Select and 6-month Premium Plus packages¹²
- Nissan Voice Recognition for navigation and audio²⁴
- SiriusXM® Traffic and Travel Link®¹²
- Auto-dimming inside rearview mirror
- HomeLink® Universal Transceiver
- Electronic parking brake
- Intelligent Cruise Control²⁵
- ProPILOT Assist⁸
- Leather-appointed seats
- Heated leather-wrapped steering wheel
- Memory System – driver's seat and outside mirrors
- 4-way power front-passenger's seat
- Bose® Premium Audio System
- Nine speakers, including dual woofers
- Intelligent Around View® Monitor²⁶

AVAILABLE PACKAGES:

- Premium Package
- Platinum Reserve Interior Package

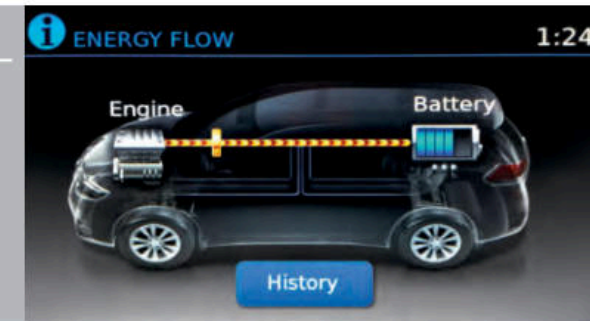


SV HYBRID INCLUDES SV EQUIPMENT PLUS:

- 2.0-liter DOHC 16-valve 4-cylinder engine and electric motor
- Engine Idle Start/Stop
- Energy Flow screen
- 60/40 Split-folding 2nd-row seat
- Under-floor cargo storage (deletes Divide-N-Hide® Cargo System)⁹

AVAILABLE PACKAGE:

- Premium Package



SL HYBRID INCLUDES SV HYBRID EQUIPMENT PLUS:

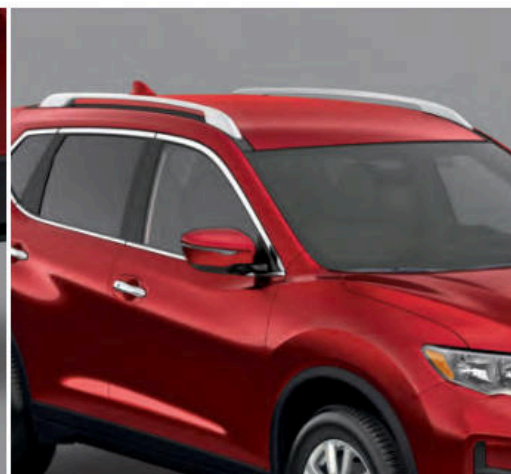
- LED headlights
- Fog lights
- Nissan Door to Door Navigation with Premium Traffic²⁴
- NissanConnect Services powered by SiriusXM® with complimentary trial access to 3-year Select and 6-month Premium Plus packages¹²
- Nissan Voice Recognition for navigation and audio²⁴
- Auto-dimming inside rearview mirror
- Homelink® Universal Transceiver
- SiriusXM® Traffic and Travel Link®¹²
- Intelligent Around View® Monitor²⁶
- Intelligent Cruise Control²⁵
- Leather-appointed seats
- Heated leather-wrapped steering wheel
- Memory System – driver's seat and outside mirrors

AVAILABLE PACKAGE:

- Premium Package



CHOOSE YOUR PACKAGE



SPECIAL EDITION PACKAGE | S

- 17" Aluminum-alloy wheels
- Power heated outside mirrors with LED turn signal indicators
- Roof rails⁹
- Rear privacy glass

- Chrome interior and exterior door handles
- Quick Comfort[®] heated front seats
- Leather-wrapped steering wheel
- Leather-wrapped shift knob
- Special Edition exterior badging



PREMIUM PACKAGE | SV

- 18" Aluminum-alloy wheels
- Nissan Door to Door Navigation with Premium Traffic²⁴
- Nissan Voice Recognition for navigation and audio²⁴
- SiriusXM[®] Traffic and Travel Link^{™12}
- Intelligent Cruise Control²⁵

- ProPILOT Assist[®]
- Heated leather-wrapped steering wheel
- Memory System – driver's seat and outside mirrors
- Intelligent Around View[®] Monitor²⁶
- Electronic parking brake

SUN AND SOUND TOURING PACKAGE | SV

- Includes Premium Package contents
- Power Panoramic Moonroof
- Bose[®] Premium Audio System
- Nine speakers, including dual woofers

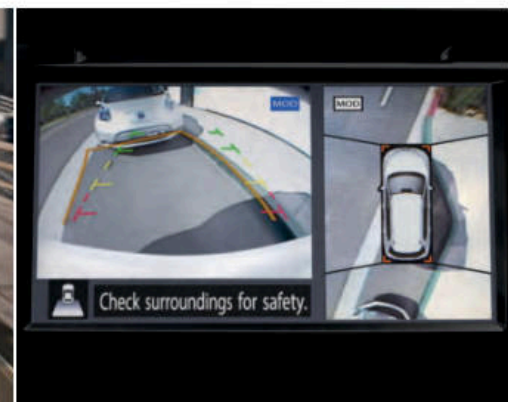


PREMIUM PACKAGE | SL

- Power Panoramic Moonroof
- LED headlights

PLATINUM RESERVE INTERIOR PACKAGE | SL

- Tan leather-appointed seats with quilted leather inserts



PREMIUM PACKAGE | SV HYBRID

- Power Panoramic Moonroof
- Nissan Door to Door Navigation with Premium Traffic²⁴
- Nissan Voice Recognition for navigation and audio²⁴
- SiriusXM[®] Traffic and Travel Link^{™12}
- Intelligent Around View[®] Monitor²⁶

- Intelligent Cruise Control²⁵
- Heated leather-wrapped steering wheel
- Memory System – driver's seat and outside mirrors
- Bose[®] Premium Audio System
- Nine speakers, including dual woofers



PREMIUM PACKAGE | SL HYBRID

- 18" Aluminum-alloy wheels
- Power Panoramic Moonroof
- Bose[®] Premium Audio System
- Nine speakers, including dual woofers

CHOOSE YOUR ACCESSORIES



Every Genuine Nissan Accessory is custom-fit, custom-designed and durability-tested. Each one is backed by Nissan's 3-year/36,000-mile (whichever occurs first) limited warranty (if installed by dealer at the time of purchase), and can be financed when installed by dealer at time of purchase.²⁷

A. Interior Accent Lighting

Add a warm glow to the mood.

B. Cargo Area Protector⁹

Preserve and help protect your cargo – and your Rogue.⁹

C. Illuminated Kick Plates

Step inside and light 'em up.

D. Chrome Rear Bumper Protector

Stylish and protective. What more could you want?

E. Nissan WiFi & Apps¹²

Connected devices. Happy passengers.

F. Wireless Smartphone Charger¹⁶

Power up without plugging in.

G. Cargo Net⁹

Hold it right there!

H. All-season Floor Mats

Neither rain, sleet, nor snow will muck up your Rogue.

Additional Accessories:

- Tow Hitch Receiver, Class I²⁸
- Frameless Auto-dimming Rearview Mirror with Universal Remote
- Frameless Prizm Rearview Mirror with Universal Remote
- Impact Sensor
- Dual USB Rear Charging Ports¹⁶
- Clear Rear Bumper Protector
- Rear Cargo Cover⁹
- Carpeted Floor Mats
- Clear Hood Protector
- And More

GENUINE NISSAN ACCESSORIES

TURN BRAND-NEW INTO ALL YOU

For more information and to shop online for Rogue[®] Genuine Nissan Accessories, go to bit.ly/19rogue-estore



To see Genuine Nissan Accessories in action, go to bit.ly/19rogue-gna

Nissan Rogue[®] SV with Sun and Sound Touring Package shown in Pearl White TriCoat with External Ground Lighting, Fog Lights, Splash Guards, Moonroof Wind Deflector, and Roof Rail Crossbars.⁹

SPECIFICATIONS

Engines	S	SV	SV HYBRID	SL	SL HYBRID
2.5-liter DOHC 16-valve 4-cylinder	■	■		■	
— Horsepower – 170 hp @ 6,000 rpm					
— Torque – 175 lb-ft @ 4,400 rpm					
2.0-liter DOHC 16-valve 4-cylinder engine and electric motor utilizing Intelligent Dual Clutch System and lithium-ion battery			■		■
— Hybrid System Net Power - 176 hp					
— Horsepower – 141 hp @ 6,000 rpm					
— Torque – 144 lb-ft @ 3,600 rpm					
— Electric motor power – 30 kW					
Continuously Variable Valve Timing Control System (CVTCS) on intake and exhaust valves	■	■	■	■	■
Nissan Direct Ignition System with double platinum-tipped spark plugs	■	■	■	■	■
Eco Mode	■	■	■	■	■
Engine Idle Start/Stop			■		■

Drivetrain	S	SV	SV HYBRID	SL	SL HYBRID
Front-Wheel Drive (FWD)	■	■	■	■	■
Intelligent All-Wheel Drive (AWD)	□	□	□	□	□
Hill start assist	■	■	■	■	■
Xtronic CVT* (Continuously Variable Transmission) with Sport Mode Shifter	■	■	■	■	■

Brakes	S	SV	SV HYBRID	SL	SL HYBRID
4-wheel vented disc brakes	■	■	■	■	■
4-wheel Anti-lock Braking System (ABS)	■	■	■	■	■
Electronic Brake force Distribution (EBD)	■	■	■	■	■
Brake Assist ²⁹	■	■	■	■	■
Intelligent Trace Control ¹¹	■	■	■	■	■
Intelligent Engine Brake	■	■	■	■	■
Active Ride Control	■	■	■	■	■

Suspension/Chassis Bracing/Steering	S	SV	SV HYBRID	SL	SL HYBRID
Independent strut front suspension	■	■	■	■	■
Independent multi-link rear suspension	■	■	■	■	■
Front and rear stabilizer bars	■	■	■	■	■
Vehicle-speed-sensitive electric power steering	■	■	■	■	■

Wheels/Tires	S	SV	SV HYBRID	SL	SL HYBRID
17" x 7.0" steel wheels with wheel covers	■				
17" x 7.0" aluminum-alloy wheels	SE		■		■
18" x 7.0" aluminum-alloy wheels		P1			H2
19" x 7.0" aluminum-alloy wheels				■	
P225/65R17 all-season tires	■	■	■		■
P225/60R18 all-season tires		P1			H2
P225/55R19 all-season tires				■	

Exterior Features	S	SV	SV HYBRID	SL	SL HYBRID
Halogen headlights	■	■	■	■	
LED Daytime Running Lights	■	■	■	■	■
LED headlights				P2	■
Intelligent Auto Headlights	■	■	■	■	■

Exterior Features (continued)	S	SV	SV HYBRID	SL	SL HYBRID
Fog lights				■	■
LED taillights	■	■	■	■	■
Power outside mirrors	■				
Power heated outside mirrors with LED turn signal indicators	SE	■	■	■	■
Roof rails ⁹	SE	■	■	■	■
Rear spoiler	■	■	■	■	■
Motion Activated Liftgate		■	■	■	■
Power Panoramic Moonroof		ST	H1	P2	H2
Rear privacy glass	SE	■	■	■	■
Chrome outside door handles	SE	■	■	■	■
Special Edition exterior badging	SE				

Comfort/Convenience	S	SV	SV HYBRID	SL	SL HYBRID
NissanConnect [®] 7" touch-screen display ¹²	■	■	■	■	■
Apple CarPlay ^{™12}	■	■	■	■	■
Android Auto ^{™12}	■	■	■	■	■
Advanced Drive-Assist [®] Display ^{13, 14}	■	■	■	■	■
Energy Flow screen					■
Nissan Door to Door Navigation with Premium Traffic ²⁴		P1	H1	■	■
NissanConnect [®] Services powered by SiriusXM [®] with complimentary trial access to 3-year Select and 6-month Premium Plus packages ¹²				■	■
Nissan Voice Recognition for navigation and audio ²⁴		P1	H1	■	■
SiriusXM [®] Traffic and Travel Link ^{®12}		P1	H1	■	■
Hands-free Text Messaging Assistant ¹⁵	■	■	■	■	■
Bluetooth [®] Hands-free Phone System ¹²	■	■	■	■	■
RearView Monitor ¹⁸	■	■	■	■	■
Intelligent Around View [®] Monitor ²⁶		P1	H1	■	■
Dual Zone Automatic Temperature Control		■	■	■	■
Rear Door Alert ¹⁷	■	■	■	■	■
HomeLink [®] Universal Transceiver				■	■
Auto-dimming inside rearview mirror		■			
Integrated Key with remote keyless entry				■	■
Nissan Intelligent Key [®] with Push Button Ignition		■	■	■	■
Remote Engine Start System with Intelligent Climate Control ²²		■	■	■	■
Rear Sonar System ²³		■	■	■	■
Electronic parking brake		P1		■	■
High Beam Assist headlights	■	■	■	■	■
Cruise control	■	■	■	■	■
Intelligent Cruise Control ²⁵		P1	H1	■	■
ProPILOT Assist ⁸		P1		■	■
Intermittent rear window wiper	■	■	■	■	■
Memory System – driver's seat and outside mirrors		P1	H1	■	■
Sun visors with illuminated vanity mirrors and extensions	■	■	■	■	■
Four cup holders and four bottle holders	■	■	■	■	■
Four cargo tie-down hooks ⁹	■	■	■	■	■
Divide-N-Hide [®] Cargo System ⁹	■	■		■	■
Under-floor cargo storage ⁹			■		■

Seating/Appointments	S	SV	SV HYBRID	SL	SL HYBRID
6-way manual driver's seat	■				
8-way power driver's seat, including 2-way lumbar support		■	■	■	■
4-way manual front-passenger's seat	■	■	■		■
4-way power front-passenger's seat				■	
EZ FLEX [®] Seating System with 2nd-row split folding/sliding/reclining seat with pass-through	■	■		■	
60/40 2nd-row split folding seat			■		■
Cloth seat trim	■	■	■		
Leather-appointed seats				■	■
Leather-appointed seats with quilted leather inserts				P3	
Quick Comfort [®] heated front seats	SE	■	■	■	■
Leather-wrapped steering wheel	SE	■	■		
Heated leather-wrapped steering wheel		P1	H1	■	■
Leather-wrapped shift knob	SE	■	■	■	■
Chrome interior door handles	SE	■	■	■	■

Audio/Entertainment	S	SV	SV HYBRID	SL	SL HYBRID
AM/FM/CD audio system with four speakers	■				
AM/FM/CD audio system with six speakers		■	■		■
Bose [®] Premium Audio System with nine speakers, including dual woofers		ST	H1	■	H2
MP3/WMA CD playback capability	■	■	■	■	■
Two USB ports ¹⁶	■	■	■	■	■
Bluetooth [®] streaming audio ¹²	■	■	■	■	■
SiriusXM [®] Radio ¹²	■	■	■	■	■
Speed-sensitive volume control	■	■	■	■	■

Safety/Security	S	SV	SV HYBRID	SL	SL HYBRID
Nissan Advanced Air Bag System with dual-stage supplemental front air bags with seat belt and occupant-classification sensors ¹⁹	■	■	■	■	■
Driver and front-passenger seat-mounted side-impact supplemental air bags ¹⁹	■	■	■	■	■
Roof-mounted curtain supplemental air bags with rollover sensor for side-impact head protection for front and rear-seat outboard occupants ¹⁹	■	■	■	■	■
Vehicle Dynamic Control (VDC) ³⁰ with Traction Control System (TCS)	■	■	■	■	■
Automatic Emergency Braking with Pedestrian Detection ²	■	■	■	■	■
Rear Automatic Braking ⁴		■	■	■	■
Blind Spot Warning ⁵	■	■	■	■	■
Rear Cross Traffic Alert ⁶	■	■	■	■	■
Intelligent Lane Intervention ⁷	■	■	■	■	■
3-point ALR/ELR passenger seat belt system (ELR for driver)	■	■	■	■	■
LATCH System (Lower Anchors and Tethers for Children)	■	■	■	■	■
Knee bolsters	■	■	■	■	■
Tire Pressure Monitoring System (TPMS) with Easy-Fill Tire Alert ^{20, 21}	■	■	■	■	■

CAPACITIES/WEIGHTS/MPG

Capacities	
Seating capacity	5
Interior passenger volume without moonroof (cu. ft.)	105.8/106.8 ³¹
Interior passenger volume with moonroof (cu. ft.)	100.4/101.5 ³¹
Cargo capacity with 2nd row upright (cu. ft.)	39.3/27.3 ³¹
Cargo capacity with rear seats folded down (cu. ft.)	70.0/61.4 ³¹
Fuel tank (gals.)	14.5
Maximum towing capacity (lbs.)	1,102 ³²

Curb Weights – Lbs.					
Base total	S	SV	SV Hybrid	SL	SL Hybrid
FWD	3,456	3,488	3,666	3,549	3,683
AWD	3,583	3,615	3,787	3,668	3,798

2018 EPA Fuel Economy Estimates ³³			
City/Hwy/Combined MPG	Standard	Hybrid	
AWD	25/32/27	31/34/33	
FWD	26/33/29	33/35/34	

NISSAN ROADSIDE ASSISTANCE

Your peace of mind is on us. For 36 months or 36,000 miles, whichever comes first, your new Nissan is covered for the following:³⁴

- Flat-tire changes
- Vehicle lockouts
- Trip Interruption benefits
- Emergency fuel delivery
- Jump starts

Follow Nissan on:



visit NissanUSA.com/rogue

PRINTED IN POLAND

■ Standard
□ Optional

SE Part of S Special Edition Package
ST Part of SV Sun and Sound Touring Package

P1 Part of SV Premium Package
P2 Part of SL Premium Package

P3 Part of SL Platinum Reserve Interior Package
H1 Part of SV Hybrid Premium Package

H2 Part of SL Hybrid Premium Package