



Innovation
that excites

2017
SENTRA[®]

SWIPE FOR MORE INFO

Download the Interactive Brochure Hub app on your tablet and you'll have **SENTRA**[®] and the whole Nissan lineup at your fingertips. Get the full product story enhanced with interactive demos and videos, plus complete info on trim levels, colors, accessories, and more.



Nissan Interactive Brochure Hub available free on the App Store[®] and Google Play.[®]

Or go to NissanUSA.com to view on your desktop.



NISSAN ROADSIDE ASSISTANCE

Your peace of mind is on us. For 36 months or 36,000 miles, whichever comes first, your new Nissan is covered for the following:¹

- Flat-tire changes
- Jump starts
- Trip Interruption benefits
- Vehicle lockouts
- Emergency fuel delivery



Innovation
that excites

Follow Nissan on:



visit NissanUSA.com/sentra

¹Roadside Assistance and Trip Interruption available during the first 36 months or 36,000 miles (whichever occurs first) after initial new vehicle delivery. Restrictions apply. See Owner's Manual for details. The App Store[®] is a registered trademark of Apple, Inc. All rights reserved. Facebook[®] is a registered trademark of Facebook, Inc. Google[®] is a registered trademark of Google, Inc. Twitter[®] is a registered trademark of Twitter, Inc. YouTube[®] is a registered trademark of Google, Inc.

PRINTED IN USA



TAKE ON your every day with a sedan that proves the good life is well within reach. Key in your next adventure and go. Embrace turbocharged power that pushes performance to new levels. And arrive with confidence, thanks to available safety features that help keep an eye out. Open some doors and fill an impressive interior with friends. The 2017 Nissan Sentra®. Enjoy more of **EVERYTHING**.

See Sentra in action at:
bit.ly/17sentravideo



188 HP
TURBOCHARGED

INTRODUCING SENTRA® SR TURBO

A new 1.6-L Direct Injection Gasoline turbocharged engine, made with revolutionary production techniques, gives Sentra SR Turbo over 50% more horsepower than other Sentra models.¹ And with your choice of a 6-speed manual transmission or the SR Turbo-exclusive CVT with Manual Shift Mode, there's more than one way to put that power directly into your hands. Just grip the leather-wrapped steering wheel, while 17" aluminum-alloy wheels carve up the road ahead.

- SR Turbo Xtronic CVT* with Manual Shift Mode
- SR Turbo-specific Tuned Steering and Suspension
- 11.7" Vented Front Disc Brakes

¹50% more horsepower than CVT-equipped Sentra which produces 124 hp.

MILES, PERFORMANCE, FUN—GET MORE OF IT EVERY DAY

Sentra takes it to the next level with excellent fuel economy in a roomy, comfortable cabin to give you the most out of each drive.² An aerodynamic exterior cuts through the air, while the 1.8-liter engine teamed with a virtually gearless CVT transmission helps maximize efficiency and performance.

- Low Rolling Resistance Tires
- Twin Continuously Variable Valve Timing
- Low Drag Coefficient

²29/37 city/highway MPG for Sentra with CVT. 27/33 city/highway MPG for Sentra SR Turbo with CVT. Fuel Economy based on targeted 2017 EPA fuel economy estimates. EPA data not available at time of publication. Targeted fuel economy estimate based on Nissan internal testing results, subject to EPA confirmation. Actual mileage may vary with driving conditions — use for comparison only.



37 MPG
HIGHWAY²



BOSE® PREMIUM AUDIO SYSTEM

Eight speakers strategically placed throughout the cabin provide a rich sound that upgrades your listening experience. The available Bose® Premium Audio System is custom-tuned for Sentra's interior acoustics to give you a front-row sound so good, it's the next best thing to being there.



UNEXPECTED UPGRADES



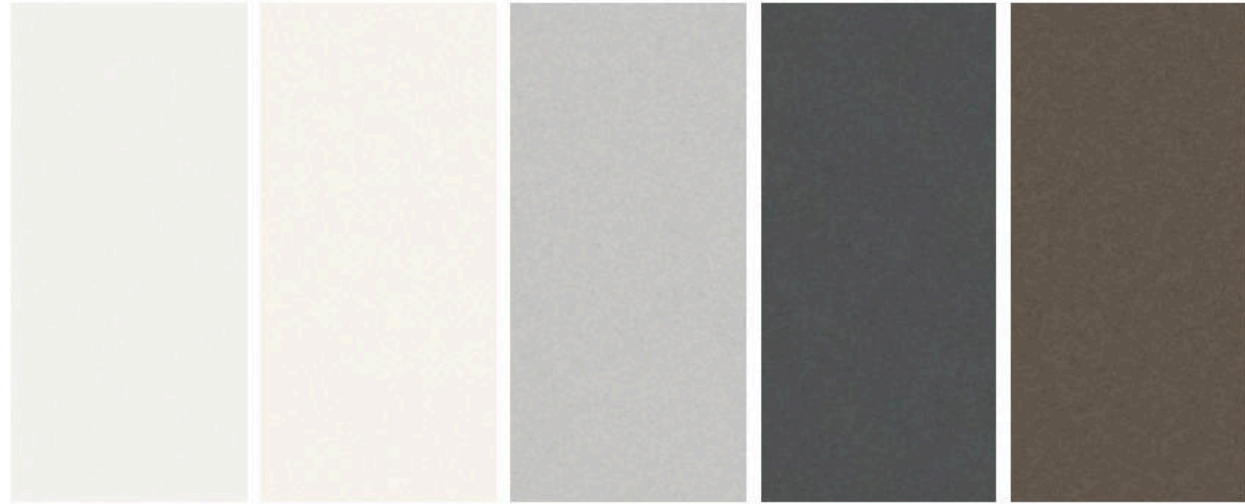
INTELLIGENT SAFETY SHIELD TECHNOLOGIES

Available Nissan Intelligent Safety Shield Technologies offer you a suite of advanced systems that help you keep an eye out around you, watch the flow of traffic, and even think ahead. Whether you're changing lanes or backing up, you can get alerted to detected vehicles you may not see. And when traffic suddenly slows down, you've got the technology to help avoid a collision or mitigate the effects of an impact.

- Forward Emergency Braking³
- Blind Spot Warning⁴
- Rear Cross Traffic Alert⁵

³Available feature. FEB cannot prevent accidents due to carelessness or dangerous driving techniques. It may not provide warning or braking in certain conditions. Speed limitations apply. ⁴Available feature. Blind Spot Warning is not a substitute for proper lane change procedures. The system will not prevent contact with other vehicles or accidents. It may not detect every vehicle or object around you. ⁵Available feature. Not a substitute for proper backing procedures. May not detect all moving vehicles. Speed and other limitations apply. See Owner's Manual for details.

CHOOSE YOUR COLOR



	Fresh Powder qm1				Aspen White ¹ qac				Brilliant Silver k23				Gun Metallic kAD				Titanium ² kAC			
	S	SV	SR	SL	S	SV	SR	SL	S	SV	SR	SL	S	SV	SR	SL	S	SV	SR	SL
MARBLE GRAY CLOTH	<input checked="" type="checkbox"/>	<input checked="" type="checkbox"/>				<input checked="" type="checkbox"/>												<input checked="" type="checkbox"/>		
MARBLE GRAY LEATHER								<input checked="" type="checkbox"/>												<input checked="" type="checkbox"/>
CHARCOAL CLOTH	<input checked="" type="checkbox"/>	<input checked="" type="checkbox"/>				<input checked="" type="checkbox"/>	<input checked="" type="checkbox"/>		<input checked="" type="checkbox"/>	<input checked="" type="checkbox"/>	<input checked="" type="checkbox"/>							<input checked="" type="checkbox"/>		
CHARCOAL LEATHER							<input type="checkbox"/>	<input checked="" type="checkbox"/>			<input type="checkbox"/>	<input checked="" type="checkbox"/>								<input checked="" type="checkbox"/>



	Red Alert A20				Cayenne Red ³ NAH				Graphite Blue RAQ				Deep Blue Pearl RAY				Super Black KH3			
	S	SV	SR	SL	S	SV	SR	SL	S	SV	SR	SL	S	SV	SR	SL ²	S	SV	SR	SL
MARBLE GRAY CLOTH										<input checked="" type="checkbox"/>			<input checked="" type="checkbox"/>	<input checked="" type="checkbox"/>						
MARBLE GRAY LEATHER								<input checked="" type="checkbox"/>				<input checked="" type="checkbox"/>				<input checked="" type="checkbox"/>				
CHARCOAL CLOTH		<input checked="" type="checkbox"/>	<input checked="" type="checkbox"/>			<input checked="" type="checkbox"/>				<input checked="" type="checkbox"/>	<input checked="" type="checkbox"/>		<input checked="" type="checkbox"/>	<input checked="" type="checkbox"/>	<input checked="" type="checkbox"/>		<input checked="" type="checkbox"/>	<input checked="" type="checkbox"/>	<input checked="" type="checkbox"/>	
CHARCOAL LEATHER			<input type="checkbox"/>	<input checked="" type="checkbox"/>				<input checked="" type="checkbox"/>			<input type="checkbox"/>	<input checked="" type="checkbox"/>				<input type="checkbox"/>			<input type="checkbox"/>	<input checked="" type="checkbox"/>

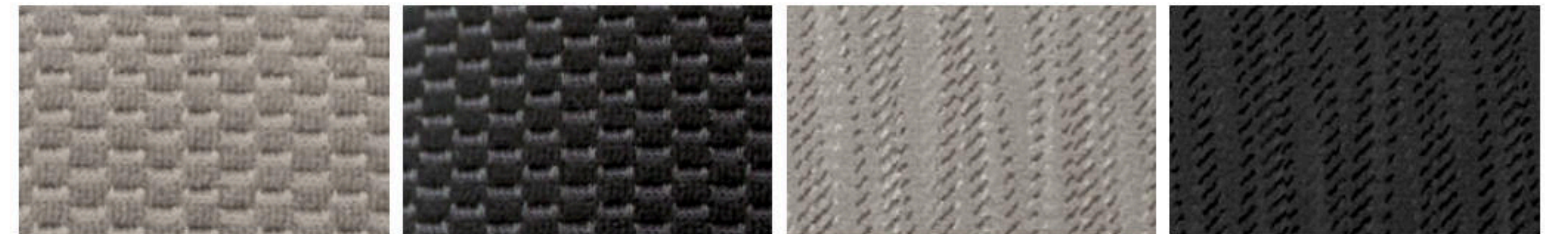
Standard
 Optional

¹Extra cost option. ²Limited availability. ³Cayenne Red color to be discontinued in April 2017. Nissan has taken care to ensure that the color swatches presented here are the closest possible representations of actual vehicle colors. Swatches may vary slightly due to the printing process and whether viewed in daylight, fluorescent or incandescent light. Please see the actual colors at your local Nissan dealer.

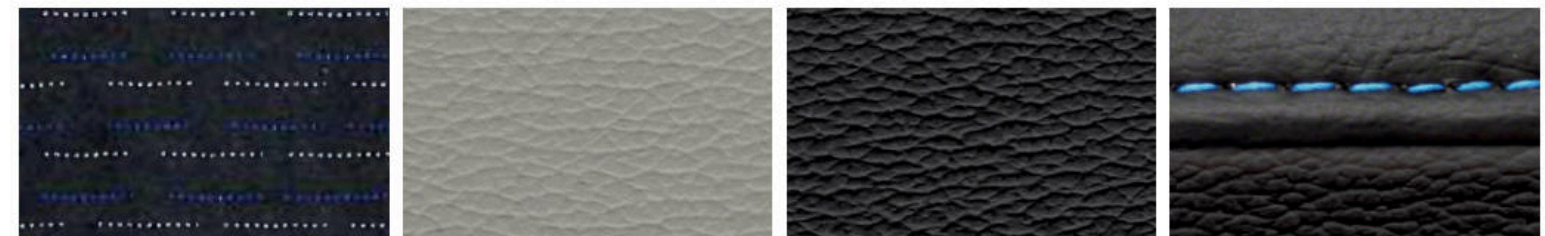
CHOOSE YOUR INTERIOR



Nissan Sentra® SL shown in Marble Gray Leather.



Marble Gray Cloth S | Charcoal Cloth S | Marble Gray Premium Cloth SV | Charcoal Premium Cloth SV



Charcoal Premium Sport Cloth SR | SR Turbo | Marble Gray Leather SL | Charcoal Leather SL | Charcoal Leather SR | SR Turbo

CHOOSE YOUR TRIM LEVEL

S

- 1.8-liter 4-cylinder engine
- 6-speed manual transmission
- Available Xtronic CVT® (Continuously Variable Transmission)
- Eco, Normal, and Sport drive modes
- Anti-lock Braking System (ABS)
- Active Understeer Control (CVT only)
- Smart Auto Headlights
- Bluetooth® Hands-free Phone System¹
- Drive computer
- Power windows and door locks
- Air conditioning with in-cabin microfilter
- Illuminated steering wheel-mounted

- audio and cruise controls
- 60/40 Split fold-down rear seats
- AM/FM/CD audio system with four speakers and auxiliary audio input jack²
- USB connection port for iPod® interface and other compatible devices²
- Six standard air bags (including roof-mounted curtain side-impact supplemental air bags)³
- Vehicle Dynamic Control (VDC)⁴ with Traction Control System (TCS)
- Tire Pressure Monitoring System (TPMS)⁵



KEY AVAILABLE PACKAGE:

- Style Package

SV INCLUDES S EQUIPMENT PLUS:

- Xtronic CVT® (Continuously Variable Transmission)
- Active Understeer Control
- RearView Monitor⁶
- Advanced Drive-Assist® Display with 5.0" color display
- Siri® Eyes Free⁷
- Hands-free text messaging assistant⁸
- Nissan Intelligent Key® with Push Button Ignition
- Sliding front armrest
- Rear-seat center armrest

- Premium cloth seat trim
- Piano Black interior trim
- AM/FM/CD audio system with 5.0" color display and six speakers
- SiriusXM® Satellite Radio⁹
- Streaming audio via Bluetooth® wireless technology¹
- 370Z®-inspired leather-wrapped steering wheel
- Tire Pressure Monitoring System (TPMS) with Easy-Fill Tire Alert^{5, 10}
- Vehicle Security System



KEY AVAILABLE PACKAGES:

- Style Package, All Weather Package, Driver's Assist Package

SR INCLUDES SV EQUIPMENT PLUS:

- 17" Aluminum-alloy wheels
- Rear disc brakes
- LED low-beam projector headlights with LED accents
- Fog lights
- Lower body side sill extensions
- Chrome exhaust finisher

- Rear spoiler with integrated LED brake light
- Dual power heated outside mirrors with LED turn signal indicators
- Driver's seatback pocket
- Premium sport cloth seat trim
- Heated front seats
- Sport interior trim



KEY AVAILABLE PACKAGES:

- Driver's Assist Package, Premium Technology Package

SR TURBO INCLUDES SR EQUIPMENT PLUS:

- 1.6-liter Direct Injection Gasoline (DIG™) turbocharged 4-cylinder engine
- Xtronic CVT® with Manual Shift Mode
- Available 6-speed manual transmission
- 11.7" Vented front disc brakes with upgraded brake pads

- Tuned suspension and steering
- Power sliding glass moonroof with tilt feature

KEY AVAILABLE PACKAGE:

- Premium Package



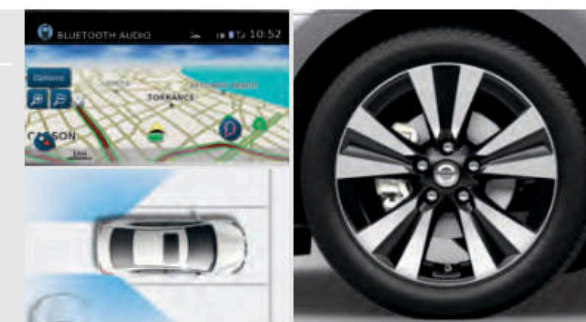
SL INCLUDES SV EQUIPMENT PLUS:

- 17" Aluminum-alloy wheels
- Rear disc brakes
- LED low-beam projector headlights with LED accents
- Fog lights
- Dual power heated outside mirrors with LED turn signal indicators
- NissanConnectSM with Navigation and Mobile Apps¹¹
- 5.8" color touch-screen display
- Nissan Voice Recognition for navigation and audio¹²
- SiriusXM® Traffic⁹

- SiriusXM® Travel Link^{9,9}
- Dual Zone Automatic Temperature Control (ATC) with in-cabin microfilter
- Driver's seatback pocket
- Auto-dimming rearview mirror with HomeLink® Universal Transceiver
- 6-way power driver's seat with 2-way power lumbar
- Leather-appointed seats
- Heated front seats
- Blind Spot Warning (BSW)¹³
- Rear Cross Traffic Alert (RCTA)¹⁴

KEY AVAILABLE PACKAGE:

- Premium Technology Package



¹Availability of specific features is dependent upon the phone's Bluetooth® support. Please refer to your phone Owner's Manual for details. Bluetooth® word mark and logos are owned by Bluetooth SIG, Inc., and any use of such marks by Nissan is under license. See NissanUSA.com/bluetooth for details. ²Driving is serious business and requires your full attention. If you have to use the connected device while driving, exercise extreme caution at all times so full attention may be given to vehicle operation. iPod® is a registered trademark of Apple, Inc. All rights reserved. iPod® or other external device not included. ³Air bags are only a supplemental restraint system; always wear your seat belt. Even with the occupant-classification sensor, rear-facing child restraints should not be placed in the front-passenger's seat. All children 12 and under should ride in the rear seat properly secured in child restraints, booster seats, or seat belts according to their size. Air bags will only inflate in certain accidents; see your Owner's Manual for more details. ⁴VDC, which should remain on when driving except when freeing the vehicle from mud or snow, cannot prevent accidents due to abrupt steering, carelessness, or dangerous driving techniques. ⁵TPMS is not a substitute for regular tire pressure checks. ⁶Parking aid/convenience feature. Cannot completely eliminate blind spots. May not detect every object and does not warn of moving objects. Always check surroundings and turn to look behind you before moving vehicle. ⁷Driving is serious business and requires your full attention. Only use feature when safe to do so. Compatible smartphone required. Availability of specific feature is dependent upon the phone's Bluetooth® support. Please refer to your phone Owner's Manual for details. Bluetooth® word mark and logos are owned by Bluetooth SIG, Inc. and any use of such marks by Nissan is under license. See NissanUSA.com/bluetooth for details. Text rates and/or data usage may apply. Certain services, including Siri®, are provided by independent companies not within Nissan's control. Should service provider terminate/restrict service, service may be suspended or terminated without notice or liability to Nissan and/or its agents. Nissan not responsible for any equipment replacement or upgrades, or associated costs, that may be required for continued operation due to service changes. Siri® Eyes Free is a registered trademark of Apple, Inc. ⁸Use the text messaging feature after stopping your vehicle in a safe location. If you have to use the feature while driving, exercise extreme caution at all times so full attention may be given to vehicle operation. Compatible smartphone required. Text rates and/or data usage may apply. ⁹Required monthly subscriptions sold separately for each available SiriusXM feature after trial period, and are continuous until you call SiriusXM to cancel. Installation costs, one-time activation fee, other fees and taxes will apply. Each SiriusXM feature availability is dependent upon vehicle model, trim level, packaging, and/or options, and may only be available in select markets. Satellite Radio U.S. service, NavWeather® service, and SiriusXM Travel Link® services (if any of the foregoing features are equipped on vehicle) available only to those 18 or older in the 48 contiguous states and D.C. Fees and programming subject to change. Subscriptions governed by Customer Agreement available at siriusxm.com. ©2016 Sirius XM Radio Inc. Sirius®, XM® and all related marks and logos are trademarks of Sirius XM Radio Inc. ¹⁰Vehicle must be on for the Easy-Fill Tire Alert to operate. ¹¹Driving is serious business. Only use features when safe to do so. App availability is dependent upon vehicle model, trim level, packaging, and/or options. See NissanUSA.com/connect for complete app availability details. Never program while driving. GPS mapping may not be detailed in all areas or reflect current road status. Compatible smartphone required. Cellular network and GPS signals not available in all areas and/or at all times. Technology is evolving, and changes by independent companies are not within Nissan's control. Nissan is not responsible for associated costs that may be required for continued operation due to cellular network termination (including equipment upgrades, if available, or roaming charges on alternative networks) or other third party changes. Should a third party provider terminate/restrict service, service may be terminated without notice and with no liability to Nissan and its agents or affiliates. Subscription Agreement required and terms and conditions of Subscription Agreement apply. See NissanUSA.com/connect for details. Text rates and/or data usage may apply. ¹²Never program while driving. GPS mapping may not be detailed in all areas or reflect current road status. ¹³Blind Spot Warning is not a substitute for proper lane change procedures. The system will not prevent contact with other vehicles or accidents. It may not detect every vehicle or object around you. ¹⁴Not a substitute for proper backing procedures. May not detect all moving vehicles. Speed and other limitations apply. See Owner's Manual for details. Bose® is a registered trademark of The Bose Corporation. HomeLink® is a registered trademark of Gentex Corporation.

CHOOSE YOUR PACKAGE



STYLE PACKAGE | S

- 16" Aluminum-alloy wheels
- Rear spoiler

(CVT models only)



ALL WEATHER PKG. | SV

- Dual power heated outside mirrors
- Heated front seats

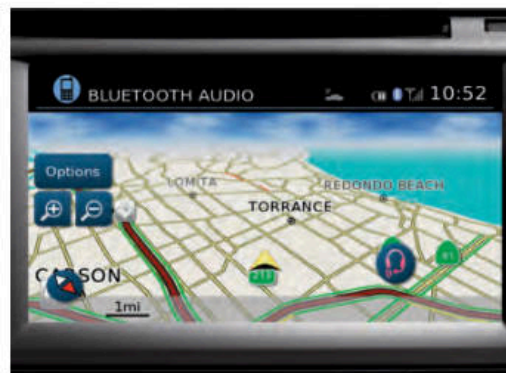


STYLE PACKAGE | SV

- 16" Aluminum-alloy wheels
- Power sliding glass moonroof with tilt feature



- Dual illuminated visor vanity mirrors
- LED mood lighting



DRIVER'S ASSIST PACKAGE | SV, SR

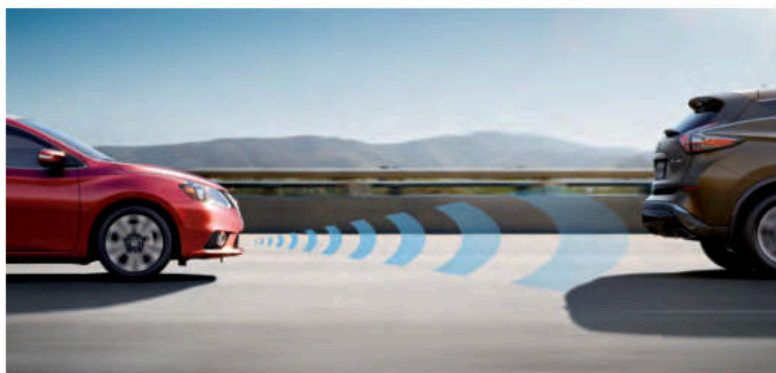
- NissanConnect with Navigation and Mobile Apps, including 5.8" color touch-screen monitor⁸



- Nissan Voice Recognition for navigation and audio²
- SiriusXM[®] Traffic and Travel Link^{®3,3}



- Blind Spot Warning (BSW)⁵
- Rear Cross Traffic Alert (RCTA)⁶

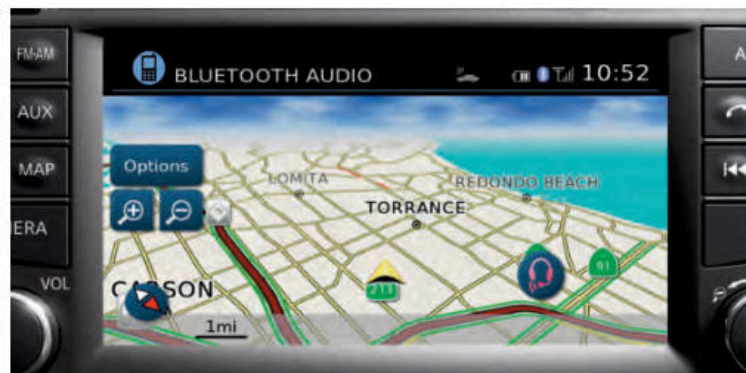


PREMIUM TECHNOLOGY PACKAGE | SR

- Power sliding glass moonroof with tilt feature
- NissanConnectSM with Navigation, Mobile Apps, and Services, including 5.8" color touch-screen monitor¹
- Nissan Voice Recognition for navigation and audio²
- SiriusXM[®] Traffic and Travel Link^{®3,3}
- HomeLink[®] Universal Transceiver
- Auto-dimming rearview mirror
- Dual illuminated visor vanity mirrors
- LED mood lighting



- Intelligent Cruise Control (ICC)⁴
- Leather-appointed seats
- 6-way power driver's seat with 2-way power lumbar
- Bose[®] Premium Audio System with eight speakers, including two subwoofers
- Blind Spot Warning (BSW)⁵
- Rear Cross Traffic Alert (RCTA)⁶
- Forward Emergency Braking (FEB)⁷



PREMIUM PACKAGE | SR TURBO

- NissanConnect with Navigation and Mobile Apps, including 5.8" color touch-screen monitor⁸
- Nissan Voice Recognition for navigation and audio²
- SiriusXM[®] Traffic and Travel Link^{®3,3}
- Blind Spot Warning (BSW)⁵
- Rear Cross Traffic Alert (RCTA)⁶
- HomeLink[®] Universal Transceiver
- Auto-dimming rearview mirror
- Dual illuminated visor vanity mirrors
- Leather-appointed seats
- 6-way power driver's seat with 2-way power lumbar
- Bose[®] Premium Audio System with eight speakers, including two subwoofers



PREMIUM TECHNOLOGY PACKAGE | SL

- Power sliding glass moonroof with tilt feature
- NissanConnect Services powered by SiriusXM^{®1}
- Dual illuminated visor vanity mirrors
- LED mood lighting
- Bose[®] Premium Audio System with eight speakers, including two subwoofers
- Forward Emergency Braking (FEB)⁷
- Intelligent Cruise Control (ICC)⁴



¹Driving is serious business. Only use NissanConnectSM Services powered by SiriusXM[®] when safe to do so. Late availability for some features. Services, including automatic crash notification and SOS, are dependent upon the telematics device being in operative condition, its ability to connect to a wireless network, compatible wireless network availability, navigation map data, and GPS satellite signal receptions, the absence of which can limit or prevent the ability to reach NissanConnect Services Customer Care or receive support. Never program while driving. GPS mapping may not be detailed in all areas or reflect current road status. You are responsible for using Remote Engine Start and Remote Horn features in accordance with any laws, rules or ordinances in effect in your vehicle's location. Remote Engine Start/Stop not available on all models. Cellular network not available in all areas and/or at all times. Cellular technology is evolving and changes to cellular networks provided by independent companies are not within Nissan's or Sirius XM Radio Inc.'s control. Neither Nissan nor Sirius XM are responsible for associated costs that may be required for continued operation due to cellular network termination (including equipment upgrades, if available, or roaming charges on alternative networks). Should cellular provider terminate/restrict services, service may be terminated without notice and with no liability to Nissan, Sirius XM and/or their respective agents or affiliates. Certain services require a PIN for activation. See NissanUSA.com/connect for details. Enrollment and Subscription Agreement required to receive full suite of services. Terms and conditions of Subscription Agreement apply. Six (6) month trial period begins on your date of vehicle purchase or lease of a new Nissan; subsequently a paid subscription is required at the then current rate to continue to receive services. Text rates and/or data usage may apply. ²Never program while driving. GPS mapping may not be detailed in all areas or reflect current road status. ³Required monthly subscriptions sold separately for each available SiriusXM feature after trial period, and are continuous until you call SiriusXM to cancel. Installation costs, one-time activation fee, other fees and taxes will apply. Each SiriusXM feature availability is dependent upon vehicle model, trim level, packaging, and/or options, and may

only be available in select markets. Satellite Radio U.S. service, NavWeather[®] service, and SiriusXM Travel Link[®] services (if any of the foregoing features are equipped on vehicle) available only to those 18 or older in the 48 contiguous states and D.C. Fees and programming subject to change. Subscriptions governed by Customer Agreement available at siriusxm.com. ©2016 Sirius XM Radio Inc. Sirius[®], XM[®] and all related marks and logos are trademarks of Sirius XM Radio Inc. ⁴Intelligent Cruise Control is not a collision avoidance system or warning device. Designed to use limited braking. Failure to apply the brakes could result in an accident. ⁵Blind Spot Warning is not a substitute for proper lane change procedures. The system will not prevent contact with other vehicles or accidents. It may not detect every vehicle or object around you. ⁶Not a substitute for proper backing procedures. May not detect all moving vehicles. Speed and other limitations apply. See Owner's Manual for details. ⁷FEB cannot prevent accidents due to carelessness or dangerous driving techniques. It may not provide warning or braking in certain conditions. Speed limitations apply. ⁸Driving is serious business. Only use features when safe to do so. App availability is dependent upon vehicle model, trim level, packaging, and/or options. See NissanUSA.com/connect for complete app availability details. Never program while driving. GPS mapping may not be detailed in all areas or reflect current road status. Compatible smartphone required. Cellular network and GPS signals not available in all areas and/or at all times. Technology is evolving, and changes by independent companies are not within Nissan's control. Nissan is not responsible for associated costs that may be required for continued operation due to cellular service may be terminated without notice and with no liability to Nissan and its agents or affiliates. Subscription Agreement required and terms and conditions of Subscription Agreement apply. See NissanUSA.com/connect for details. Text rates and/or data usage may apply. Bose[®] is a registered trademark of The Bose Corporation. HomeLink[®] is a registered trademark of Genetex Corporation.

CHOOSE YOUR ACCESSORIES



Every Genuine Nissan Accessory is custom-fit, custom-designed and durability-tested. Each one is also backed by Nissan's 3-year/36,000-mile (whichever occurs first) limited warranty (if installed by dealer at the time of purchase).¹ Plus, they can be financed when installed by the dealer at the time of purchase.

A. Nissan 4G WiFi and Apps²

Stay connected – from any seat.

B. Hideaway Trunk Net and Carpeted Trunk Mat (sold separately)³

Catch of the day – no mess!

C. All-season Floor Mats

Neither sleet, snow, nor mud shall mess your ride.

D. External Ground Lighting (SR only)

Lights. Sentra®. Action!

E. Illuminated Kick Plates

Fewer scuffs and a grand entry, every time.

F. Interior Accent Lighting

Bring the bling with 20 pre-programmed color options.

G. Auto-dimming Rearview Mirror with HomeLink® and Compass

Perfect for dim bulbs driving with their brights on.

H. Clear Rear Bumper Protector

Shields up! Keeps nicks and scratches at bay.

Additional Accessories:

- Carpeted Floor Mats
- Sentra SR Turbo Carpeted Floor Mats
- Body Side Moldings
- Moonroof Wind Deflector
- Sentra SR Turbo Carpeted Trunk Mat
- Sentra SR Turbo Sill Plate Protector
- And More

GENUINE NISSAN ACCESSORIES OFF TO A GREAT START

For more information and to shop online for Sentra Genuine Nissan Accessories, go to bit.ly/17sentra-estore



Nissan Sentra® SV shown in Red Alert with Fog Lights, Chrome Body Side Moldings, Splash Guards, and Rear Decklid Spoiler.

¹Genuine Nissan Accessories are covered by Nissan's Limited Warranty on Genuine Nissan Replacement Parts, Genuine NISMO® S-Tune Parts, and Genuine Nissan Accessories for the longer of 12 months/12,000 miles (whichever occurs first) or the remaining period under the 3-year/36,000-mile (whichever occurs first) Nissan New Vehicle Limited Warranty. Terms and conditions apply. See Warranty Information Booklet for details. ²Driving is serious business and requires your full attention. Only use Nissan WiFi and Apps Services powered by Autonet Mobile when safe to do so. Only available on select models. See Nissanwifi.com for complete availability details. Never program while driving. GPS mapping may not be detailed in all

areas or reflect current road status. Nissan WiFi and Apps Services requires compatible cellular network provided by Autonet, navigation map data, and GPS satellite signal receptions, the absence of which can limit or prevent the ability of the Nissan WiFi and Apps Services. Cellular network and GPS signals not available in all areas and/or at all times. Technology is evolving, and changes to cellular networks provided by independent companies or other third party changes that impact Nissan WiFi and Apps Services are not within Nissan's control. Should a third party or Autonet Mobile terminate or make changes that impact the service, service may be terminated without notice and Nissan shall have no liability. The Apps Services requires compatible smartphone or personal computer, not included with vehicle. Enrollment and Subscription Agreement is required to receive full suite of Nissan WiFi and Apps Services through Autonet Mobile. The 90 day trial period for Apps Services begins when the unit is registered with Autonet Mobile; subsequently the respective paid subscription for WiFi is at the then current rate to continue to receive respective services. Terms and conditions of Subscription Agreement then apply. Text rates and/or data usage may apply. ³Cargo and load capacity limited by weight and distribution. Always secure all cargo. HomeLink® is a registered trademark of Genetex Corporation.

SPECIFICATIONS

Engine	S	SV	SR	SR Turbo	SL
MRA8DE – 1.8-liter DOHC 16-valve 4-cylinder engine ¹	■	■	■		■
__Horsepower – 124 horsepower ¹ @ 6,000 rpm					
__Torque – 125 lb-ft of torque ¹ @ 3,600 rpm					
MR16DDT – 1.6-liter Direct Injection Gasoline (DIG™) turbocharged 4-cylinder engine				■	
__Horsepower – 188 horsepower @ 5,600 rpm					
__Torque – 177 lb-ft of torque @ 5,200 rpm					
Continuously Variable Valve Timing Control System (CVTCS) on intake and exhaust valves	■	■	■	■	■
Nissan Direct Ignition System	■	■	■	■	■

Drivetrain	S	SV	SR	SR Turbo	SL
6-speed manual transmission	■			□	
Xtronic CVT® (Continuously Variable Transmission)	□	■	■		■
Xtronic CVT® with Manual Shift Mode				■	

Brakes	S	SV	SR	SR Turbo	SL
11.0" Vented front disc brakes	■	■	■		■
11.7" Vented front disc brakes with upgraded brake pads				■	
9.0" Rear drum brakes	■				
11.5" Solid rear disc brakes			■	■	■
4-wheel Anti-lock Braking System (ABS)	■	■	■	■	■
Electronic Brake force Distribution (EBD)	■	■	■	■	■
Brake Assist	■	■	■	■	■

Suspension/Chassis Bracing/Steering	S	SV	SR	SR Turbo	SL
Independent strut front suspension	■	■	■	■	■
Torsion beam rear suspension with integrated rear stabilizer bar	■	■	■	■	■
Active Understeer Control (not available on S with manual transmission)	□	■	■	■	■
Tuned suspension and steering				■	

Wheels/Tires	S	SV	SR	SR Turbo	SL
16" x 6.5" steel wheels with wheel covers	■	■			
16" x 6.5" aluminum-alloy wheels	S1	S2			
17" x 6.5" 10-spoke aluminum-alloy wheels			■	■	
17" x 6.5" split 5-spoke aluminum-alloy wheels				■	■
P205/55HR16 all-season tires	■	■			
P205/50VR17 all-season tires			■	■	■

Exterior Features	S	SV	SR	SR Turbo	SL
Halogen headlights	■	■			
LED low-beam projector headlights with LED accents			■	■	■
Fog lights			■	■	■
Lower body side sill extensions			■	■	
Chrome exhaust finisher			■	■	
Rear spoiler	S1				
Rear spoiler with integrated LED brake light			■	■	
Dual power outside mirrors	■	■			
Dual power heated outside mirrors		A			

■ Standard
□ Optional
S1 Part of S Style Package
S2 Part of SV Style Package
A Part of SV All Weather Package
D Part of SV/SR Driver's Assist Package
P1 Part of SR Premium Technology Package
P2 Part of SL Premium Technology Package
T Part of SR Turbo Premium Package

Exterior Features (continued)	S	SV	SR	SR Turbo	SL
Dual power heated outside mirrors with LED turn signal indicators			■	■	■
Power sliding glass moonroof with tilt feature		S2	P1	■	P2

Comfort/Convenience	S	SV	SR	SR Turbo	SL
NissanConnect SM with Navigation and Mobile Apps ²		D	D	T	■
NissanConnect with Navigation, Mobile Apps, and Services ³			P1		P2
Nissan Voice Recognition for navigation and audio		D	D, P1	T	■
SiriusXM® Traffic and Travel Link ⁴		D	D, P1	T	■
Siri® Eyes Free ⁵		■	■	■	■
Hands-free text messaging assistant ⁶		■	■	■	■
Bluetooth® Hands-free Phone System ⁷	■	■	■	■	■
HomeLink® Universal Transceiver			P1	T	■
RearView Monitor ⁸		■	■	■	■
Advanced Drive-Assist® Display ^{9,10}	■				
Integrated Key with remote keyless entry		■	■	■	■
Nissan Intelligent Key® with Push Button Ignition		■	■	■	■
Dual Zone Automatic Temperature Control (ATC)	■	■			■
Tilt and telescoping steering column	■	■	■	■	■
Cruise control				P1	P2
Intelligent Cruise Control (ICC) ¹¹		■	■	■	■
Sliding front armrest		■	■	■	■
Rear seat center armrest with cup holders		■	■	■	■
Dual illuminated visor vanity mirrors		S2	P1	T	P2
Auto-dimming rearview mirror			P1	T	■
LED mood lighting		S2	P1	■	P2

Seating/Appointments	S	SV	SR	SR Turbo	SL
6-way manual driver's seat	■	■		■	■
6-way power driver's seat with 2-way power lumbar	■	■	P1	T	■
4-way manual front-passenger's seat	■				
Cloth seat trim		■			
Premium cloth seat trim				■	■
Premium sport cloth seat trim			P1	T	■
Leather-appointed seats					
Heated front seats		A	■	■	■
60Z/40 Split fold-down rear seats	■	■	■	■	■
370Z [®] -inspired leather-wrapped steering wheel	■	■	■	■	■
Silver interior trim	■		■	■	■
Sport interior trim		■	■	■	■
Piano Black interior trim			■	■	■

Audio/Entertainment	S	SV	SR	SR Turbo	SL
AM/FM/CD audio system	■				
AM/FM/CD audio system with 5.0" color monitor		■	■	■	
AM/FM/CD audio system with 5.8" color touch-screen monitor		D	D, P1	T	■
Four speakers	■				
Six speakers		■	■	■	■
Bose® Premium Audio System with eight speakers, including two subwoofers			P1	T	P2
USB port and auxiliary audio input jack ¹²	■	■	■	■	■
SiriusXM® Satellite Radio ⁴		■	■	■	■
Streaming audio via Bluetooth® wireless technology ⁷		■	■	■	■

Safety/Security	S	SV	SR	SR Turbo	SL
Nissan Advanced Air Bag System with dual-stage supplemental front air bags with seat belt sensors and occupant-classification sensor	■	■	■	■	■
Driver and front-passenger seat-mounted side-impact supplemental air bags	■	■	■	■	■
Roof-mounted curtain side-impact supplemental air bags with rollover sensor for outboard occupant head protection	■	■	■	■	■
Vehicle Dynamic Control (VDC) ¹³ with Traction Control System (TCS)	■	■	■	■	■
Forward Emergency Braking (FEB) ¹⁴			P1		P2
Blind Spot Warning (BSW) ¹⁵		D	D, P1	T	■
Rear Cross Traffic Alert (RCTA) ¹⁶		D	D, P1	T	■
LATCH System (Lower Anchors and Tethers for Children)	■	■	■	■	■
Tire Pressure Monitoring System (TPMS)	■				
TPMS with Easy-Fill Tire Alert		■	■	■	■
Nissan Vehicle Immobilizer System	■	■	■	■	■
Vehicle Security System		■	■	■	■

¹S 6MT models get 130 horsepower and 128 lb-ft of torque. ²Driving is serious business. Only use features when safe to do so. App availability is dependent upon vehicle model, trim level, packaging, and/or options. See NissanUSA.com/connect for complete app availability details. Never program while driving. GPS mapping may not be detailed in all areas or reflect current road status. Compatible smartphone required. Cellular network and GPS signals not available in all areas and/or at all times. Technology is evolving, and changes by independent companies are not within Nissan's control. Nissan is not responsible for associated costs that may be required for continued operation due to cellular network termination (including equipment upgrades, if available, or roaming charges on alternative networks) or other third party changes. Should a third party provider terminate/restrict service, service may be terminated without notice and with no liability to Nissan and its agents or affiliates. Subscription Agreement required and terms and conditions of Subscription Agreement apply. See NissanUSA.com/connect for details. Text rates and/or data usage may apply. ³Driving is serious business. Only use NissanConnectSM Services powered by SiriusXM® when safe to do so. Late availability for some features. Services, including automatic crash notification and SOS, are dependent upon the telematics device being in operative condition, its ability to connect to a wireless network, compatible wireless network availability, navigation map data, and GPS satellite signal reception; the absence of which can limit or prevent the ability to reach NissanConnect Services Customer Care or receive support. Never program while driving. GPS mapping may not be detailed in all areas or reflect current road status. You are responsible for using Remote Engine Start and Remote Horn features in accordance with any laws, rules or ordinances in effect in your vehicle's location. Remote Engine Start/Stop not available on all models. Cellular network not available in all areas and/or at all times. Cellular technology is evolving and changes to cellular networks provided by independent companies are not within Nissan's or Sirius XM Radio Inc.'s control. Neither Nissan nor Sirius XM are responsible for associated costs that may be required for continued operation due to cellular network termination (including equipment upgrades, if available, or roaming charges on alternative networks). Should cellular provider terminate/restrict services, service may be terminated without notice and with no liability to Nissan, Sirius XM and/or their respective agents or affiliates. Certain services require a PIN for activation. See NissanUSA.com/connect for details. Enrollment and Subscription Agreement required to receive full suite of services. Terms and conditions of Subscription Agreement apply. Six (6) month trial period begins on your date of vehicle purchase or lease of a new Nissan, subsequently a paid subscription is required at the then current rate to continue to receive services. Text rates and/or data usage may apply. ⁴Required monthly subscriptions sold separately for each available SiriusXM feature after trial period, and are continuous until you call SiriusXM to cancel. Installation costs, one-time activation fee, other fees and taxes will apply. Each SiriusXM feature availability is dependent upon vehicle model, trim level, packaging, and/or options, and may only be available in select markets. Satellite Radio U.S. service, NavWeather® service, and SiriusXM® Travel Link® services (if any of the foregoing features are equipped on vehicle) available only to those 18 or older in the 48 contiguous states and D.C. Fees and programming subject to change. Subscriptions governed by Customer Agreement available at siriusxm.com. ©2016 Sirius XM Radio Inc. Sirius® XM® and all related marks and logos are trademarks of Sirius XM Radio Inc. ⁵Driving is serious business and requires your full attention. Only use feature when safe to do so. Compatible smartphone required. Availability of specific feature is dependent upon the phone's Bluetooth® support. Please refer to your phone Owner's Manual for details. Bluetooth® word mark and logos are owned by Bluetooth SIG, Inc. and any use of such marks by Nissan is under license. See NissanUSA.com/bluetooth for details. Text rates and/or data usage may apply. Certain services, including Siri®, are provided by independent companies not within Nissan's control. Should service provider terminate/restrict service, service may be suspended or terminated without notice or liability to Nissan and/or its agents. Nissan not responsible for any equipment replacement or upgrades, or associated costs, that may be required for continued operation due to service changes. Siri® Eyes Free is a registered trademark of Apple, Inc. ⁶Use the text messaging feature after stopping your vehicle in a safe location. If you have to use the feature while driving, exercise extreme caution at all times so full attention may be given to vehicle operation. Compatible smartphone required. Standard text rates and/or data usage may apply. ⁷Availability of specific features is dependent upon the phone's Bluetooth® support. Please refer to your phone Owner's Manual for details. Bluetooth® word mark and logos are owned by Bluetooth SIG, Inc. and any use of such marks by Nissan is under license. See NissanUSA.com/bluetooth for details. ⁸Parking aid/convenience feature. Cannot completely eliminate blind spots. May not detect every object and does not warn of moving objects. Always check surroundings and turn to look behind you before moving vehicle. ⁹Driving is serious business and requires your full attention. If you have to use the feature while driving, exercise extreme caution at all times so full attention may be given to vehicle operation. ¹⁰Information displayed is dependent on how vehicle is equipped. ¹¹Intelligent Cruise Control is not a collision

DIMENSIONS/CAPACITIES/WEIGHTS/MPG

Exterior Dimensions – Inches					
Wheelbase	106.3				
Overall length	182.1 (182.5 for SR models)				
Overall width/height	69.3/58.9 (59.0 for SR Turbo)				
Track width (front/rear)	60.2/60.2				
Aerodynamics – Cd	S	SV	SR	SR Turbo	SL
Drag coefficient	0.29	0.29	0.29	0.29	0.30

Interior Dimensions (front/rear) – Inches					
Head room without moonroof	39.4/36.7				
Head room with moonroof	38.5/36.7				
Leg room	42.5/37.4				
Hip room	50.9/50.1				
Shoulder room	54.7/53.9				

Capacities					
Seating capacity	5				
EPA interior passenger volume (cu. ft.)	95.9				
EPA cargo volume (cu. ft.)	15.1				
Fuel tank (gals.)	13.2				

Curb Weights – Lbs.					
Base total	S	SV	SR	SR Turbo	SL
Manual transmission	2,848	–	–	3,009	–
Xtronic CVT®	2,857	2,877	2,920	3,076	2,943

2017 EPA Fuel Economy Estimates					
City/Highway/Combined MPG	S	SV	SR	SR Turbo	SL
Manual transmission	27/35/30	–	–	26/32/28	–
Xtronic CVT®	29/37/32	29/37/32	29/37/32	27/33/29	29/37/32

29/37 city/highway MPG for Sentra with CVT. 27/33 city/highway MPG for Sentra SR Turbo with CVT. Fuel Economy based on targeted 2017 EPA fuel economy estimates. EPA data not available at time of publication. Targeted fuel economy estimate based on Nissan internal testing results, subject to EPA confirmation. Actual mileage may vary with driving conditions – use for comparison only.

avoidance system or warning device. Designed to use limited braking. Failure to apply the brakes could result in an accident. ¹²Driving is serious business and requires your full attention. If you have to use the connected device while driving, exercise extreme caution at all times so full attention may be given to vehicle operation. External device not included. ¹³VDC, which should remain on when driving except when freeing the vehicle from mud or snow, cannot prevent accidents due to abrupt steering, carelessness, or dangerous driving techniques. ¹⁴FEB cannot prevent accidents due to carelessness or dangerous driving techniques. It may not provide warning or braking in certain conditions. Speed and other limitations apply. See Owner's Manual for details. ¹⁵Blind Spot Warning is not a substitute for proper lane change procedures. The system will not prevent contact with other vehicles or accidents. It may not detect every vehicle or object around you. ¹⁶Not a substitute for proper backing procedures. May not detect all moving vehicles. Speed and other limitations apply. See Owner's Manual for details. Bose® is a registered trademark of The Bose Corporation. HomeLink® is a registered trademark of Centex Corporation. iPod® is a registered trademark of Apple, Inc. All rights reserved. iPad® or other external device not included. This brochure is intended for general descriptive and informational purposes only. It is subject to change and does not constitute an offer, representation or warranty (express or implied) by Nissan North America, Inc. Interested parties should confirm the accuracy of any information in this brochure as it relates to a vehicle directly with Nissan North America, Inc. before relying on it to make a purchase decision. Nissan North America, Inc. reserves the right to make changes, at any time, without prior notice, in prices, colors, materials, equipment, specifications, and models and to discontinue models or equipment. Due to continuous product development and other pre- and post-production factors, actual vehicle, materials and specifications may vary from this brochure. Some vehicles shown with optional equipment. See the actual vehicle for complete accuracy. Availability and delivery times for particular models or equipment may vary. Specifications, options and accessories may differ in Hawaii, U.S. territories and other countries. For additional information on availability, options or accessories, see your Nissan dealer or contact Nissan North America, Inc. At NissanUSA.com, you'll find virtual product demonstrations, a way to "build your own Nissan," a dealer locator, and more information about key Nissan support services. Or if you'd prefer, call 1-800-NISSAN-3 for answers to specific questions about Sentra® or any other Nissan vehicle. The Nissan names, logos, product names, feature names, and slogans are trademarks owned by or licensed to Nissan Motor Co. Ltd. and/or its North American subsidiaries. Other trademarks and trade names are those of their respective owners. **Always wear your seat belt, and please don't drink and drive.** ©2016 Nissan North America, Inc. 17 Sentra 1719209-N-9/16-100M-CGI