

## NISSAN INTELLIGENT MOBILITY™

Nissan Intelligent Mobility guides everything we do. We're using new technologies to transform cars from mere driving machines into assistants. Together the journey is more confident, connected, and exciting. Whether it's cars that assist in the driving task, or highways that charge your EV as you go along, it's all in the very near future. And it's a future already taking shape in the Nissan you drive today.

### SEE SENTRA® COME TO LIFE

Go to [NissanUSA.com](http://NissanUSA.com) and find an interactive brochure for Sentra® and every Nissan in the lineup. Available on desktop or smartphone, it's the full product story – including demos, videos, and complete info on trims, colors, and accessories.

Or download the Interactive Brochure Hub app on your tablet. **Free on the App Store® and Google Play.™**



### NISSAN ROADSIDE ASSISTANCE

Your peace of mind is on us. For 36 months or 36,000 miles, whichever comes first, your new Nissan is covered for the following:¹

- Flat-tire changes
- Trip Interruption benefits
- Jump starts
- Vehicle lockouts
- Emergency fuel delivery

Follow Nissan on:



visit [NissanUSA.com/sentra](http://NissanUSA.com/sentra)

¹Available services/features may be shown. Compatible connected device may be required. Only use services/features and device when safe and legal to do so. Subject to GPS and wireless network availability and connection, and system/technology limitations. Text rates/data usage/subscription may apply. Some services/features provided by companies not within Nissan or its partners' or agents' control and may be discontinued at any time. For more information, see dealer, owner's manual, or [NissanUSA.com/connect/important-information](http://NissanUSA.com/connect/important-information). The App Store® is a registered trademark of Apple, Inc. All rights reserved. Facebook® is a registered trademark of Facebook, Inc. Google Play™ is a trademark of Google, Inc. YouTube® is a registered trademark of Google, Inc. Twitter® is a registered trademark of Twitter, Inc.

PRINTED IN POLAND



Innovation  
that excites

2018  
**SENTRA®**



Innovation  
that excites



**TAKE ON THE GOOD LIFE** with a sedan that upgrades your every day. Head-turning good looks, available advanced safety features, and available turbocharged performance are just the start. The 2018 Nissan Sentra®. Fill an impressive interior with friends and **TAKE ON TODAY.**

See Sentra® in action at:  
[bit.ly/18sentravideo](https://bit.ly/18sentravideo)



### SENTRA® SR TURBO

SR Turbo's 1.6-L DIG™ turbocharged engine gives it over 50% more horsepower than other Sentra models.<sup>1</sup> The Turbo-exclusive CVT with Manual Shift Mode gives you options on how to put that power in your hands. Just grip the leather-wrapped steering wheel, while 17" aluminum-alloy wheels carve up the road.

SR Turbo Xtronic CVT® with Manual Shift Mode

SR Turbo-specific Tuned Steering and Suspension

11.7" Vented Front Disc Brakes

NISSAN INTELLIGENT MOBILITY™



### A BOLDER RIDE THROUGH LIFE

Nissan Intelligent Mobility connects you to your drive like never before. You'll make every move with greater awareness and get a little help when you need it most. All of this gives you more confidence and, ultimately, the freedom to embrace the joy of being behind the wheel. This is how driving was always supposed to be.

- Available features include:
- Automatic Emergency Braking<sup>3</sup>
  - Blind Spot Warning<sup>4</sup>
  - Intelligent Cruise Control<sup>5</sup>
  - Rear Cross Traffic Alert<sup>6</sup>

<sup>1</sup>50% more horsepower than CVT-equipped Sentra®, which produces 124 hp. <sup>2</sup>29/37 city/highway MPG for Sentra S, SV, SR, and SL with CVT. 27/33 city/highway MPG for Sentra SR Turbo. Fuel Economy based on targeted 2018 EPA fuel economy estimates. EPA data not available at time of publication. Targeted fuel economy estimate based on Nissan internal testing results, subject to EPA confirmation. Actual mileage may vary with driving conditions — use for comparison only. <sup>3</sup>AEB cannot prevent accidents due to carelessness or dangerous driving techniques. It may not provide warning or braking in certain conditions. Speed and other limitations apply. See Owner's Manual for details. <sup>4</sup>Blind Spot Warning is not a substitute for proper lane change procedures. The system will not prevent contact with other vehicles or accidents. It may not detect every vehicle or object around you. <sup>5</sup>Intelligent Cruise Control is not a collision avoidance system or warning device. Designed to use limited braking. Failure to apply the brakes could result in an accident. <sup>6</sup>Not a substitute for proper backing procedures. May not detect all moving vehicles. Speed and other limitations apply. See Owner's Manual for details. Alcantara® is a registered trademark of Alcantara S.p.A. Corporation.

### EFFICIENCY THAT GIVES YOU MORE OUT OF EVERY DRIVE

Sentra impresses with excellent fuel economy thanks to the 1.8-liter engine teamed with a virtually gearless CVT transmission that helps maximize efficiency and performance. And the low rolling resistance tires reduce friction to help you move, so you can enjoy up to 37 MPG highway.<sup>2</sup>

Low Rolling Resistance All-season Tires

Twin Continuously Variable Valve Timing

Low Drag Coefficient

# 37 MPG HIGHWAY<sup>2</sup>



## nismo®

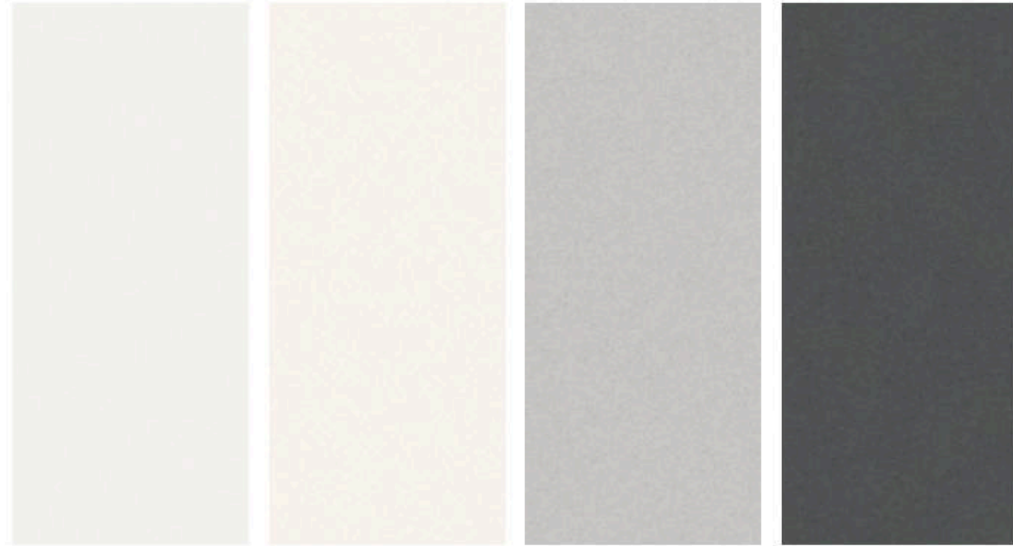
### PASSION WITHOUT A REDLINE

Since 1984, NISMO has been propelled by maverick engineering with one goal in mind: ultimate Nissan performance. Featuring a track-inspired aerodynamic exterior, NISMO-tuning, and an impressive list of styling and performance upgrades, Sentra NISMO ensures your drive will never be the same again.



- 1.6-L DIG™ turbocharged engine
- 18" NISMO aluminum-alloy wheels
- Front sport seats with red trim bolsters and NISMO badging
- Chrome exhaust finisher
- Alcantara®-appointed interior

## CHOOSE YOUR COLOR



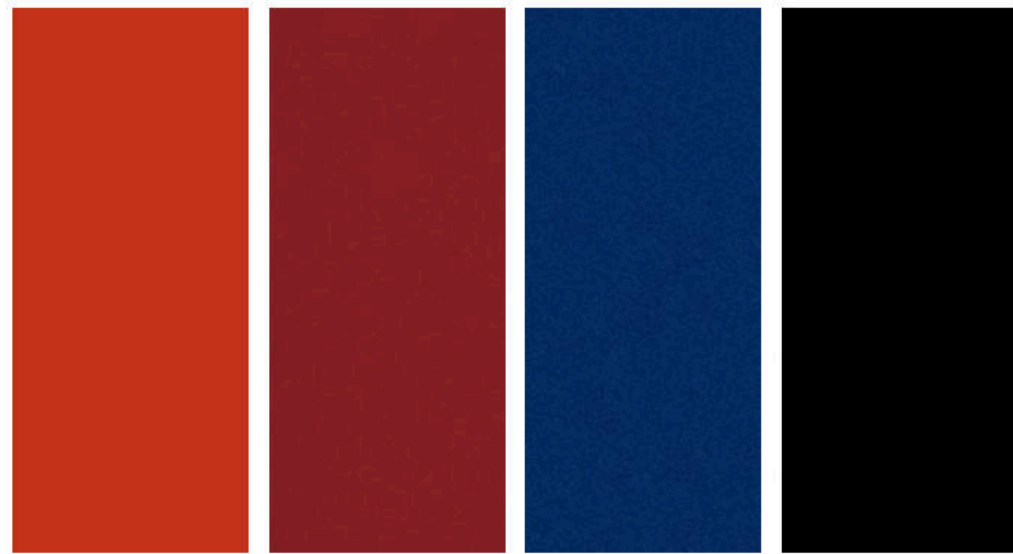
Fresh Powder QM1

Aspen White<sup>1</sup> QAC

Brilliant Silver K23

Gun Metallic KAD

	S	SV	SR	SL	NISMO*
CHARCOAL CLOTH	<input checked="" type="checkbox"/>	<input checked="" type="checkbox"/>	<input type="checkbox"/>	<input type="checkbox"/>	<input type="checkbox"/>
CHARCOAL LEATHER	<input type="checkbox"/>	<input type="checkbox"/>	<input type="checkbox"/>	<input checked="" type="checkbox"/>	<input type="checkbox"/>
NISMO BLACK/RED CLOTH	<input type="checkbox"/>	<input type="checkbox"/>	<input type="checkbox"/>	<input type="checkbox"/>	<input checked="" type="checkbox"/>



Red Alert A20

Scarlet Ember<sup>1</sup> NBL

Deep Blue Pearl RAY

Super Black KH3

	S	SV	SR	SL	NISMO*
CHARCOAL CLOTH	<input type="checkbox"/>	<input checked="" type="checkbox"/>	<input checked="" type="checkbox"/>	<input type="checkbox"/>	<input type="checkbox"/>
CHARCOAL LEATHER	<input type="checkbox"/>	<input type="checkbox"/>	<input type="checkbox"/>	<input checked="" type="checkbox"/>	<input type="checkbox"/>
NISMO BLACK/RED CLOTH	<input type="checkbox"/>	<input type="checkbox"/>	<input type="checkbox"/>	<input type="checkbox"/>	<input checked="" type="checkbox"/>

Standard

Optional

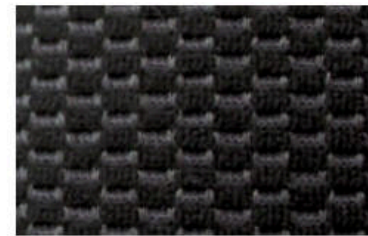
<sup>1</sup>Extra cost option.

Nissan has taken care to ensure that the color swatches presented here are the closest possible representations of actual vehicle colors. Swatches may vary slightly due to the printing process and whether viewed in daylight, fluorescent or incandescent light. Please see the actual colors at your local Nissan dealer.

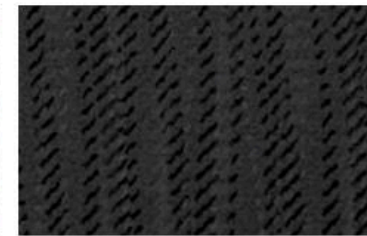
## CHOOSE YOUR INTERIOR



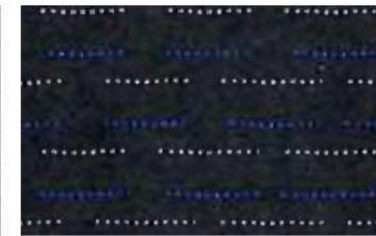
Nissan Sentra<sup>®</sup> SL shown in Charcoal Leather.



Charcoal Cloth  
S



Charcoal Premium Cloth  
SV



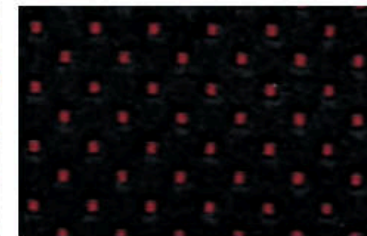
Charcoal Premium Sport Cloth  
SR | SR Turbo



Charcoal Leather  
SL



Charcoal Leather  
SR | SR Turbo



NISMO<sup>®</sup> Black/Red Cloth  
NISMO

## CHOOSE YOUR TRIM LEVEL

**S**

1.8-liter 4-cylinder engine, 6-speed manual transmission, Available Xtronic CVT® (Continuously Variable Transmission), Eco, Normal, and Sport drive modes, Anti-lock Braking System (ABS), Active Understeer Control (CVT only), Intelligent Auto Headlights, 5.0" color display, RearView Monitor, Siri® Eyes Free,<sup>1</sup> Advanced Drive-Assist® Display (CVT only), Hands-free Text Messaging Assistant,<sup>2</sup> Bluetooth® Hands-free Phone System,<sup>1</sup> Drive computer, Power windows and door locks, Air conditioning with in-cabin microfilter, Illuminated steering wheel-mounted audio and cruise controls, 60/40 Split fold-down rear seats, AM/FM/CD audio system with four speakers and auxiliary audio input jack, USB port, Bluetooth® streaming audio,<sup>1</sup> 370Z®-inspired steering wheel (CVT only), Automatic Emergency Braking (CVT only), Six standard air bags, Vehicle Dynamic Control (VDC) with Traction Control System (TCS), Tire Pressure Monitoring System (TPMS)

### AVAILABLE PACKAGE:

- Appearance Package



### SV INCLUDES S EQUIPMENT PLUS:

Xtronic CVT® (Continuously Variable Transmission), Active Understeer Control, 16" Aluminum-alloy wheels, Advanced Drive-Assist Display, Nissan Intelligent Key® with Push Button Ignition, Dual Zone Automatic Temperature Control, Sliding front armrest, Rear-seat center armrest, Premium cloth seat trim, Piano Black interior trim, AM/FM/CD audio system with six speakers, SiriusXM® Satellite Radio,<sup>1</sup> Three USB ports, Leather-wrapped steering wheel, Automatic Emergency Braking, Tire Pressure Monitoring System (TPMS) with Easy-Fill Tire Alert, Vehicle Security System

### AVAILABLE PACKAGES:

- Premium Package, All-Weather Package



### SR INCLUDES SV EQUIPMENT PLUS:

17" Aluminum-alloy wheels, Rear disc brakes, LED low-beam projector headlights with LED accents, Fog lights, Lower body side sill extensions, Chrome exhaust finisher, Rear spoiler with integrated LED brake light, Dual power heated outside mirrors with LED turn signal indicators, Intelligent Cruise Control, Premium sport cloth seat trim, Heated front seats, Sport interior trim

### AVAILABLE PACKAGES:

- Premium Package, Technology Package



### SR TURBO INCLUDES SR EQUIPMENT PLUS:

1.6-liter Direct Injection Gasoline (DIG™) turbocharged 4-cylinder engine, Xtronic CVT® with Manual Shift Mode, 11.7" Vented front disc brakes with upgraded brake pads, Tuned suspension and steering, Power sliding glass moonroof, Center room LED dim lamp, Deletes Intelligent Cruise Control

### AVAILABLE PACKAGE:

- Premium Package

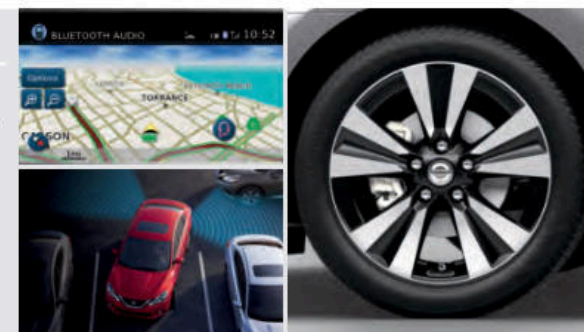


### SL INCLUDES SV EQUIPMENT PLUS:

17" Aluminum-alloy wheels, Rear disc brakes, LED low-beam projector headlights with LED accents, Fog lights, Dual power heated outside mirrors with LED turn signal indicators, Power sliding glass moonroof, Nissan Navigation System with 5.8" color touch-screen display,<sup>3</sup> NissanConnect® Mobile Apps,<sup>1</sup> NissanConnect Services powered by SiriusXM,<sup>4</sup> Nissan Voice Recognition for navigation and audio,<sup>3</sup> SiriusXM® Traffic and Travel Link,<sup>1</sup> Intelligent Cruise Control, Auto-dimming rearview mirror with HomeLink® Universal Transceiver, Center room LED dim lamp, 6-way power driver's seat with 2-way power lumbar, Leather-appointed seats, Heated front seats, Bose® Premium Audio System, Blind Spot Warning, Rear Cross Traffic Alert

### NISMO® INCLUDES SR TURBO EQUIPMENT PLUS:

Available 6-speed manual transmission, NISMO-tuned suspension with increased spring and dampening rates, 18" NISMO aluminum-alloy wheels, Michelin® Pilot Sport® A/S 3+ P215/45R18 all-season tires, LED Daytime Running Lights, NISMO front grille and badging, NISMO aerodynamic body kit – front and rear fascias, side sills, and rear spoiler, NISMO black mirror caps with LED turn signal indicators, NISMO chrome exhaust finisher, Nissan Navigation System with 5.8" color touch-screen display,<sup>3</sup> NissanConnect Mobile Apps,<sup>1</sup> Nissan Voice Recognition for navigation and audio,<sup>3</sup> SiriusXM® Traffic and Travel Link,<sup>1</sup> NISMO tachometer, NISMO sport front seats with bolsters, synthetic suede trim, and signature red stitching, Synthetic suede-trimmed rear seats with red stitching, NISMO Alcantara® and leather-wrapped steering wheel, NISMO leather-wrapped shift knob (6MT models only), Carbon Fiber Look center console and door trim, Black headliner, Bose® Premium Audio System, Deletes: Active Understeer Control, Fog lights, Power sliding glass moonroof, Center room LED dim lamp, Automatic Emergency Braking



<sup>1</sup>Feature availability is dependent on vehicle model, trim level, packaging and options. Compatible connected device may be required and feature availability may be dependent on device's capability. Refer to connected device's Owner's Manual for details. Late availability for some features. **Driving is serious business and requires your full attention.** Only use features and connected devices when safe and legal to do so. Some features, including automatic crash notification and SOS, are dependent upon the telematics device being in operative condition, its ability to connect to a wireless network, compatible wireless network availability, navigation map data and GPS satellite signal receptions, the absence of which can limit or prevent the ability to reach Customer Care or receive support. GPS mapping may not be detailed in all areas or reflect current road status. Never program GPS while driving. Only use Remote Engine Start and Remote Horn features in accordance with any laws, rules or ordinances in effect in your vehicle's location. Some services and features are provided by independent companies not within Nissan's control. **Should service provider terminate or restrict service or features, service or features may be suspended or terminated without notice or with no liability to Nissan or its partners or agents.** Services and features may require compatible cellular network provided by independent companies not within Nissan or its partners' or agents' control. Cellular network signal strength may vary and may not be available in all areas or at all times. Services and features may not function if cellular network is unavailable, restricted, or terminated. Nissan and its partners or agents are not responsible for associated costs or other third party changes that may be required

for continued operation due to cellular network unavailability, restriction, or termination (including equipment replacements/upgrades, if available, or roaming charges on alternative networks). Technology is evolving, and changes by independent companies are not within Nissan's or its partners' or agents' control. Enrollment, owner consent, personal identification number (PIN), and subscription agreement may be required to receive full suite of features and services. Trial periods (if applicable) begin on the date of vehicle purchase or lease of a new Nissan. Trial periods may be subject to change at any time and may be subject to early termination without notice. Required subscriptions may be sold separately for each available feature or service after trial period ends, and may continue until you call service provider to cancel. Installation costs, one-time activation fee, other fees and taxes may apply. Fees and programming subject to change. Feature may be subject to age restrictions in some areas. Subscriptions governed by service provider's subscription agreement, terms and conditions and privacy statements available at service provider's website. Text rates or data usage may apply. The Nissan names, logos and slogans are trademarks owned by or licensed to Nissan Motor Co. Ltd. or its North American subsidiaries. Other trademarks and trade names are those of their respective owners. For important safety information, system limitations, and additional operating and feature information, see dealer, Owner's Manual, or [NissanUSA.com/connect/important-information](http://NissanUSA.com/connect/important-information). <sup>2</sup>Use the Text Messaging feature after stopping your vehicle in a safe location. If you have to use the feature while driving, exercise extreme caution at all times so full attention may be given to vehicle operation. Compatible smartphone required. Text rates and/or data usage may apply. <sup>3</sup>Never program while driving. GPS mapping may not be detailed in all areas or reflect current road status. Alcantara® is a registered trademark of Alcantara S.p.A. Corporation. Bose® is a registered trademark of The Bose Corporation. HomeLink® is a registered trademark of Gentex Corporation. Michelin® and Pilot Sport® are registered trademarks of Michelin North America, Inc. Siri® and Siri® Eyes Free are registered trademarks of Apple, Inc. The Sirius®, XM®, and SiriusXM® names and all related marks and logos are trademarks of Sirius XM Radio Inc.

## CHOOSE YOUR PACKAGE



### APPEARANCE PKG. | S

- Requires CVT
- 16" Aluminum-alloy wheels
- Rear spoiler



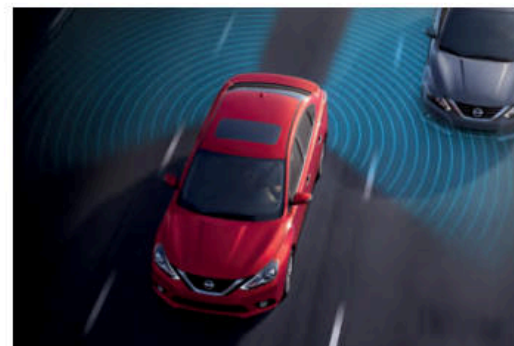
### ALL-WEATHER PKG. | SV

- Dual power heated outside mirrors
- Heated front seats



### PREMIUM PACKAGE | SV

- Power sliding glass moonroof with tilt feature
- Nissan Navigation System with 5.8" color touch-screen display<sup>1</sup>
- NissanConnect<sup>®</sup> Mobile Apps<sup>2</sup>
- Nissan Voice Recognition for navigation and audio<sup>1</sup>
- SiriusXM<sup>®</sup> Traffic and Travel Link<sup>2</sup>
- Dual illuminated visor vanity mirrors
- Center room LED dim lamp

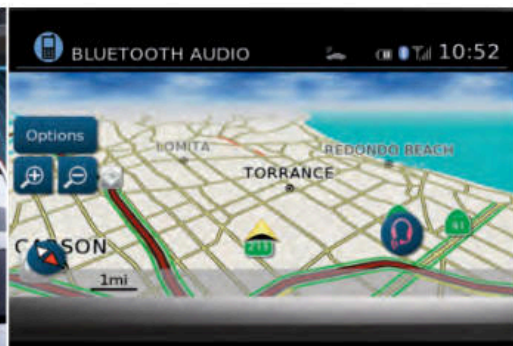


### TECHNOLOGY PACKAGE | SR

- Nissan Navigation System with 5.8" color touch-screen display<sup>1</sup>
- NissanConnect Mobile Apps<sup>2</sup>



- Nissan Voice Recognition for navigation and audio<sup>1</sup>
- SiriusXM<sup>®</sup> Traffic and Travel Link<sup>2</sup>



- Blind Spot Warning<sup>3</sup>
- Rear Cross Traffic Alert<sup>4</sup>



### PREMIUM PACKAGE | SR

- Power sliding glass moonroof with tilt feature
- NissanConnect with Navigation, Mobile Apps, and Services, including 5.8" color touch-screen monitor<sup>2</sup>
- Nissan Voice Recognition for navigation and audio<sup>1</sup>
- SiriusXM<sup>®</sup> Traffic and Travel Link<sup>2</sup>
- HomeLink<sup>®</sup> Universal Transceiver
- Auto-dimming rearview mirror
- Dual illuminated visor vanity mirrors



- Center room LED dim lamp
- Leather-appointed seats
- 6-way power driver's seat with 2-way power lumbar
- Bose<sup>®</sup> Premium Audio System with eight speakers, including dual subwoofers
- Blind Spot Warning<sup>3</sup>
- Rear Cross Traffic Alert<sup>4</sup>



### PREMIUM PACKAGE | SR TURBO

- Nissan Navigation System with 5.8" color touch-screen display<sup>1</sup>
- NissanConnect Mobile Apps<sup>2</sup>
- Nissan Voice Recognition for navigation and audio<sup>1</sup>
- SiriusXM<sup>®</sup> Traffic and Travel Link<sup>2</sup>



- HomeLink<sup>®</sup> Universal Transceiver
- Auto-dimming rearview mirror
- Dual illuminated visor vanity mirrors
- Leather-appointed seats
- 6-way power driver's seat with 2-way power lumbar
- Bose<sup>®</sup> Premium Audio System with eight speakers, including dual subwoofers
- Blind Spot Warning<sup>3</sup>
- Rear Cross Traffic Alert<sup>4</sup>

<sup>1</sup>Never program while driving. GPS mapping may not be detailed in all areas or reflect current road status. <sup>2</sup>Feature availability is dependent on vehicle model, trim level, packaging and options. Compatible connected device may be required and feature availability may be dependent on device's capability. Refer to connected device's Owner's Manual for details. Late availability for some features. **Driving is serious business and requires your full attention.** Only use features and connected devices when safe and legal to do so. Some features, including automatic crash notification and SOS, are dependent upon the telematics device being in operative condition, its ability to connect to a wireless network, compatible wireless network availability, navigation map data and GPS satellite signal reception, the absence of which can limit or prevent the ability to reach Customer Care or receive support. GPS mapping may not be detailed in all areas or reflect current road status. Never program GPS while driving. Only use Remote Engine Start and Remote Horn features in accordance with any laws, rules or ordinances in effect in your vehicle's location. Some services and features are provided by independent companies not within Nissan's control. **Should service provider terminate or restrict service or features, service or features may be suspended or terminated without notice or with no liability to Nissan or its partners or agents.** Services and features may require compatible cellular network provided by independent companies not within Nissan or its partners' or agents' control. Cellular network signal strength may vary and may not be available in all areas or at all times. Services and features may not function if cellular network is unavailable, restricted, or terminated. Nissan and its partners or agents are not responsible for associated costs or other third party charges that may be required for continued operation due to cellular network unavailability, restriction, or termination (including equipment replacements/upgrades, if available, or roaming charges on

alternative networks). Technology is evolving, and changes by independent companies are not within Nissan's or its partners' or agents' control. Enrollment, owner consent, personal identification number (PIN), and subscription agreement may be required to receive full suite of features and services. Trial periods (if applicable) begin on the date of vehicle purchase or lease of a new Nissan. Trial periods may be subject to change at any time and may be subject to early termination without notice. Required subscriptions may be sold separately for each available feature or service after trial period ends, and may continue until you call service provider to cancel. Installation costs, one-time activation fee, other fees and taxes may apply. Fees and programming subject to change. Feature may be subject to age restrictions in some areas. Subscriptions governed by service provider's subscription agreement, terms and conditions and privacy statements available at service provider's website. Text rates or data usage may apply. The Nissan names, logos and slogans are trademarks owned by or licensed to Nissan Motor Co. Ltd. or its North American subsidiaries. Other trademarks and trade names are those of their respective owners. For important safety information, system limitations, and additional operating and feature information, see dealer, Owner's Manual, or [NissanUSA.com/connect/important-information](http://NissanUSA.com/connect/important-information). <sup>3</sup>Blind Spot Warning is not a substitute for proper lane change procedures. The system will not prevent contact with other vehicles or accidents. It may not detect every vehicle or object around you. <sup>4</sup>Not a substitute for proper backing procedures. May not detect all moving vehicles. Speed and other limitations apply. See Owner's Manual for details. Bose<sup>®</sup> is a registered trademark of The Bose Corporation. HomeLink<sup>®</sup> is a registered trademark of Gentex Corporation. The Sirius<sup>®</sup>, XM<sup>®</sup>, and SiriusXM<sup>®</sup> names and all related marks and logos are trademarks of Sirius XM Radio Inc.

## CHOOSE YOUR ACCESSORIES



Every Genuine Nissan Accessory is custom-fit, custom-designed and durability-tested. Each one is also backed by Nissan's 3-year/36,000-mile (whichever occurs first) limited warranty (if installed by dealer at the time of purchase).<sup>1</sup> Ask your dealer whether a specific Genuine Nissan Accessory may be financed when installed by the dealer at the time of purchase.

### A. Nissan WiFi & Apps<sup>2</sup>

Stay connected – from any seat.

### B. Hideaway Trunk Net and Carpeted Trunk Mat (sold separately)<sup>2</sup>

Catch of the day – no mess!

### C. All-season Floor Mats

Neither sleet, snow, nor mud shall mess your ride.

### D. External Ground Lighting (SR only)

Lights. Sentra® Action!

### E. Illuminated Kick Plates

Fewer scuffs and a grand entry, every time.

### F. Interior Accent Lighting

Bring the bling with 20 pre-programmed color options.

### G. Auto-dimming Rearview Mirror with HomeLink® and Compass

Perfect for dim bulbs driving with their brights on.

### H. Clear Rear Bumper Protector

Shields up! Keeps nicks and scratches at bay.

### Additional Accessories:

- Carpeted Floor Mats
- NISMO Carpeted Floor Mats
- Body Side Moldings
- Sentra SR Turbo Carpeted Floor Mats
- NISMO® Carpeted Floor Mats
- Sentra SR Turbo Carpeted Trunk Mat
- NISMO Carpeted Trunk Mat
- Sentra SR Turbo Sill Plate Protector
- NISMO Sill Plate Protector
- Moonroof Wind Deflector
- And More

<sup>1</sup>Genuine Nissan Accessories are covered by Nissan's Limited Warranty on Genuine Nissan Replacement Parts, Genuine NISMO® S-Tune Parts, and Genuine Nissan Accessories for the longer of 12 months/12,000 miles (whichever occurs first) or the remaining period under the 3-year/36,000-mile (whichever occurs first) Nissan New Vehicle Limited Warranty. Terms and conditions apply. See Warranty Information Booklet for details. <sup>2</sup>Feature availability is dependent on vehicle model, trim level, packaging and options. Compatible connected device may be required and feature availability may be dependent on device's capability. Refer to connected device's Owner's Manual for details. Late availability for some features. **Driving is serious business and requires your full attention.** Only use features and connected devices when safe and legal to do so. Some features, including automatic crash notification and SOS, are dependent upon the telematics device being in operative condition, its ability to connect to a wireless network, compatible wireless network availability, navigation map data and GPS satellite signal receptions, the absence of which can limit or prevent the ability to reach Customer Care or receive support. GPS mapping may not be detailed in all areas or reflect current road status. Never program GPS while driving. Only use Remote Engine Start and Remote Horn features in accordance with any laws, rules or ordinances in effect in your vehicle's location. Some services and features are provided by independent companies not within Nissan's control. **Should service provider terminate or restrict service or features, service or features may be suspended or terminated without notice or with no liability to Nissan or its partners or agents.** Services and features may require

## GENUINE NISSAN ACCESSORIES OFF TO A GREAT START

For more information and to shop online for Sentra Genuine Nissan Accessories, go to [bit.ly/18sentra-estore](https://bit.ly/18sentra-estore)



Nissan Sentra® SV shown in Red Alert with Fog Lights, Chrome Body Side Moldings, Splash Guards, and Rear Decklid Spoiler.

compatible cellular network provided by independent companies not within Nissan or its partners' or agents' control. Cellular network signal strength may vary and may not be available in all areas or at all times. Services and features may not function if cellular network is unavailable, restricted, or terminated. Nissan and its partners or agents are not responsible for associated costs or other third party charges that may be required for continued operation due to cellular network unavailability, restriction, or termination (including equipment replacements/upgrades, if available, or roaming charges on alternative networks). Technology is evolving, and changes by independent companies are not within Nissan's or its partners' or agents' control. Enrollment, owner consent, personal identification number (PIN), and subscription agreement may be required to receive full suite of features and services. Trial periods (if applicable) begin on the date of vehicle purchase or lease of a new Nissan. Trial periods may be subject to change at any time and may be subject to early termination without notice. Required subscriptions may be sold separately for each available feature or service after trial period ends, and may continue until you call service provider to cancel. Installation costs, one-time activation fee, other fees and taxes may apply. Fees and programming subject to change. Feature may be subject to age restrictions in some areas. Subscriptions governed by service provider's subscription agreement, terms and conditions and privacy statements available at service provider's website. Text rates or data usage may apply. The Nissan names, logos and slogans are trademarks owned by or licensed to Nissan Motor Co. Ltd. or its North American subsidiaries. Other trademarks and trade names are those of their respective owners. For important safety information, system limitations, and additional operating and feature information, see dealer, Owner's Manual, or [NissanUSA.com/connect/important-information](https://NissanUSA.com/connect/important-information). <sup>3</sup>Cargo and load capacity limited by weight and distribution. Always secure all cargo. HomeLink® is a registered trademark of Gentex Corporation.

## SPECIFICATIONS

Engines	S	SV	SR	SR Turbo	SL	NISMO <sup>®</sup>
1.8-liter DOHC 16-valve 4-cylinder engine <sup>1</sup> Horsepower – 124 horsepower <sup>1</sup> @ 6,000 rpm	■	■	■		■	
Torque – 125 lb-ft of torque <sup>1</sup> @ 3,600 rpm						
1.6-liter Direct Injection Gasoline (DIG™) turbocharged 4-cylinder engine Horsepower – 188 horsepower @ 5,600 rpm				■		■
Torque – 177 lb-ft of torque @ 5,200 rpm						
Continuously Variable Valve Timing Control System (CVTCS) on intake and exhaust valves	■	■	■	■	■	■
Nissan Direct Ignition System	■	■	■	■	■	■

Drivetrain	S	SV	SR	SR Turbo	SL	NISMO <sup>®</sup>
6-speed manual transmission	■					□
Xtronic CVT <sup>®</sup> (Continuously Variable Transmission)	□	■	■		■	
Xtronic CVT <sup>®</sup> with Manual Shift Mode				■		■

Brakes	S	SV	SR	SR Turbo	SL	NISMO <sup>®</sup>
11.0" Vented front disc brakes	■	■	■		■	
11.7" Vented front disc brakes with upgraded brake pads				■		■
9.0" Rear drum brakes	■	■				
11.5" Solid rear disc brakes	■	■	■	■	■	■
4-wheel Anti-lock Braking System (ABS)	■	■	■	■	■	■
Electronic Brake force Distribution (EBD)	■	■	■	■	■	■
Brake Assist	■	■	■	■	■	■

Suspension/Chassis Bracing/Steering	S	SV	SR	SR Turbo	SL	NISMO <sup>®</sup>
Independent strut front suspension	■	■	■	■	■	■
Torsion beam rear suspension with integrated rear stabilizer bar	■	■	■	■	■	■
Active Understeer Control	□	■	■	■	■	
Tuned suspension and steering				■		
NISMO-tuned suspension with increased spring and dampening rates						■

Wheels/Tires	S	SV	SR	SR Turbo	SL	NISMO <sup>®</sup>
16" x 6.5" steel wheels with wheel covers	■					
16" x 6.5" aluminum-alloy wheels	A1	■				
17" x 6.5" 10-spoke aluminum-alloy wheels			■	■		
17" x 6.5" split 5-spoke aluminum-alloy wheels					■	
18" NISMO 10-spoke aluminum-alloy wheels						■
P205/55HR16 all-season tires	■	■				
P205/50VR17 all-season tires			■	■	■	
Michelin <sup>®</sup> Pilot Sport <sup>®</sup> A/S 3+ P215/45R18 all-season tires						■

Exterior Features	S	SV	SR	SR Turbo	SL	NISMO <sup>®</sup>
Halogen headlights	■	■				
LED low-beam projector headlights with LED accents			■	■	■	■

■ Standard	P1 Part of SV Premium Package	T Part of SR Technology Package
□ Optional	A2 Part of SV All-Weather Package	P3 Part of SR Turbo Premium Package
A1 Part of S Appearance Package	P2 Part of SR Premium Package	

Exterior Features (continued)	S	SV	SR	SR Turbo	SL	NISMO <sup>®</sup>
Intelligent Auto Headlights	■	■	■	■	■	■
Fog lights			■	■	■	
LED Daytime Running Lights						■
Lower body side sill extensions			■	■		
Chrome exhaust finisher			■	■		■
Rear spoiler	A1					■
Rear spoiler with integrated LED brake light			■	■		
NISMO aerodynamic body kit						■
Dual power outside mirrors	■	■				
Dual power heated outside mirrors		A2				
Dual power heated outside mirrors with LED turn signal indicators			■	■	■	
NISMO black mirror caps with LED turn signal indicators						■
Power sliding glass moonroof		P1	T, P2	■	■	

Comfort/Convenience	S	SV	SR	SR Turbo	SL	NISMO <sup>®</sup>
Nissan Navigation System with 5.8" color touch-screen monitor <sup>2</sup>		P1	T, P2	P3		■
NissanConnect <sup>®</sup> Mobile Apps <sup>3</sup>		P1	T, P2	P3		■
NissanConnect Services powered by SiriusXM <sup>®3</sup>			P2		■	
Nissan Voice Recognition for navigation and audio <sup>2</sup>		P1	T, P2	P3	■	■
SiriusXM <sup>®</sup> Traffic and Travel Link <sup>3</sup>	■	■	■	■	■	■
Siri <sup>®</sup> Eyes Free <sup>3</sup>	■	■	■	■	■	■
Hands-free Text Messaging Assistant <sup>4</sup>	■	■	■	■	■	■
Bluetooth <sup>®</sup> Hands-free Phone System <sup>5</sup>	■	■	■	■	■	■
HomeLink <sup>®</sup> Universal Transceiver			P2	P3		
Auto-dimming rearview mirror			P2	P3		
RearView Monitor	■	■	■	■	■	■
Advanced Drive-Assist <sup>®</sup> Display	□	■	■	■	■	■
NISMO tachometer						■
Nissan Intelligent Key <sup>®</sup> with Push Button Ignition		■	■	■	■	■
Dual Zone Automatic Temperature Control			■	■	■	■
Intelligent Cruise Control			■	■	■	■
Dual illuminated visor vanity mirrors		P1	T, P2	P3	■	
Center room LED dim lamp		P1	T, P2	■	■	

Seating/Appointments	S	SV	SR	SR Turbo	SL	NISMO <sup>®</sup>
6-way manual driver's seat	■	■	■	■	■	■
6-way power driver's seat with 2-way power lumbar			P2	P3	■	■
4-way manual front-passenger's seat	■	■	■	■	■	■
NISMO sport front seats						■
Cloth seat trim	■					
Premium cloth seat trim		■				
Premium sport cloth seat trim			■	■		
Leather-appointed seats			P2	P3	■	
Heated front seats		A2	■	■	■	■
370Z <sup>®</sup> -inspired steering wheel	□	■	■	■	■	
Leather-wrapped steering wheel	■	■	■	■	■	
NISMO Alcantara <sup>®</sup> and leather-wrapped steering wheel and shift knob						■

Seating/Appointments (continued)	S	SV	SR	SR Turbo	SL	NISMO <sup>®</sup>
Silver interior trim	■					
Sport interior trim			■	■		
Piano Black interior trim		■			■	
Carbon Fiber Look interior trim						■

Audio/Entertainment	S	SV	SR	SR Turbo	SL	NISMO <sup>®</sup>
AM/FM/CD audio system with 5.0" color monitor	■	■	■	■	■	
AM/FM/CD audio system with 5.8" color touch-screen monitor		P1	T, P2	P3	■	■
Bose <sup>®</sup> Premium Audio System with eight speakers, including dual subwoofers			P2	P3	■	
Three USB ports	□	■	■	■	■	■
SiriusXM <sup>®</sup> Satellite Radio <sup>3</sup>		■	■	■	■	■
Bluetooth <sup>®</sup> streaming audio <sup>3</sup>	■	■	■	■	■	■

Safety/Security	S	SV	SR	SR Turbo	SL	NISMO <sup>®</sup>
Nissan Advanced Air Bag System with dual-stage supplemental front air bags with seat belt sensors and occupant-classification sensor	■	■	■	■	■	■
Driver and front-passenger seat-mounted side-impact supplemental air bags	■	■	■	■	■	■
Roof-mounted curtain side-impact supplemental air bags with rollover sensor for onboard occupant head protection	■	■	■	■	■	■
Vehicle Dynamic Control (VDC) with Traction Control System (TCS)	■	■	■	■	■	■
Automatic Emergency Braking <sup>5</sup>	□	■	■	■	■	
Blind Spot Warning			P2	P3	■	
Rear Cross Traffic Alert			P2	P3	■	
LATCH System (Lower Anchors and Tethers for Children)	■	■	■	■	■	■
TPMS with Easy-Fill Tire Alert	■	■	■	■	■	■

<sup>1</sup>S 6MT models get 130 horsepower and 128 lb-ft of torque. <sup>2</sup>Never program while driving. GPS mapping may not be detailed in all areas or reflect current road status. <sup>3</sup>Feature availability is dependent on vehicle model, trim level, packaging and options. Compatible connected device may be required and feature availability may be dependent on device's capability. Refer to connected device's Owner's Manual for details. Late availability for some features. **Driving is serious business and requires your full attention.** Only use features and connected devices when safe and legal to do so. Some features, including automatic crash notification and SOS, are dependent upon the telematics device being in operative condition, its ability to connect to a wireless network, compatible wireless network availability, navigation map data and GPS satellite signal receptions, the absence of which can limit or prevent the ability to reach Customer Care or receive support. GPS mapping may not be detailed in all areas or reflect current road status. Never program GPS while driving. Only use Remote Engine Start and Remote Horn features in accordance with any laws, rules or ordinances in effect in your vehicle's location. Some services and features are provided by independent companies not within Nissan's control. **Should service provider terminate or restrict service or features, service or features may be suspended or terminated without notice or with no liability to Nissan or its partners or agents.** Services and features may require compatible cellular network provided by independent companies not within Nissan or its partners' or agents' control. Cellular network signal strength may vary and may not be available in all areas or at all times. Services and features may not function if cellular network is unavailable, restricted, or terminated. Nissan and its partners or agents are not responsible for associated costs or other third party charges that may be required for continued operation due to cellular network unavailability, restriction, or termination (including equipment replacements/upgrades, if available, or roaming charges on alternative networks). Technology is evolving, and changes by independent companies are not within Nissan's or its partners' or agents' control. Enrollment, owner consent, personal identification number (PIN), and subscription agreement may be required to receive full suite of features and services. Trial periods (if applicable) begin on the date of vehicle purchase or lease of a new Nissan. Trial periods may be subject to change at any time and may be subject to early termination without notice. Required subscriptions may be sold separately for each available feature or service after trial period ends, and may continue until you call service provider to cancel. Installation costs, one-time activation fee, other fees and taxes may apply. Fees and programming subject to change. Feature may be subject to age restrictions in some areas. Subscriptions governed by service provider's subscription agreement, terms and conditions and privacy statements available at service provider's website. Text rates or data usage may apply. The Nissan names, logos and slogans are trademarks owned by or licensed to Nissan Motor Co. Ltd. or its North American subsidiaries. Other trademarks and trade names are those of their respective owners. For important safety information, system limitations, and additional operating and feature information, see dealer, Owner's Manual, or [NissanUSA.com/connect/important-information](http://NissanUSA.com/connect/important-information). <sup>4</sup>Use the Text Messaging feature after stopping

## DIMENSIONS/CAPACITIES/WEIGHTS/MPG

Exterior Dimensions – Inches	
Wheelbase	106.3
Overall length	182.1 (182.5 for SR models)
Overall width/height	69.3/58.9 (59.0 for SR Turbo)
Track width (front/rear)	60.2/60.2

Aerodynamics – Cd	S	SV	SR	SR Turbo	SL	NISMO
Drag coefficient	0.29	0.29	0.29	0.29	0.30	0.29

Interior Dimensions (front/rear) – Inches	
Head room without moonroof	39.4/36.7
Head room with moonroof	38.5/36.7
Leg room	42.5/37.4
Hip room	50.9/50.1
Shoulder room	54.7/53.9

Capacities	
Seating capacity	5
EPA interior passenger volume (cu. ft.)	95.9
EPA cargo volume (cu. ft.)	15.1
Fuel tank (gals.)	13.2

### Curb Weights – Lbs.

Base total	S	SV	SR	SR Turbo	SL	NISMO
Manual transmission	2,866	–	–	–	–	3,022
Xtronic CVT <sup>®</sup>	2,874	2,880	2,904	3,081	2,952	3,090

### 2018 EPA Fuel Economy Estimates

City/Highway/Combined MPG	S	SV	SR	SR Turbo	SL	NISMO
Manual transmission	27/35/30	–	–	–	–	25/31/27
Xtronic CVT <sup>®</sup>	29/37/32	29/37/32	29/37/32	27/33/29	29/37/32	25/30/27

29/37 city/highway MPG for Sentra S, SV, SR, and SL with CVT. 27/33 city/highway MPG for Sentra SR Turbo. Fuel Economy based on targeted 2018 EPA fuel economy estimates. EPA data not available at time of publication. Targeted fuel economy estimate based on Nissan internal testing results, subject to EPA confirmation. Actual mileage may vary with driving conditions – use for comparison only.

your vehicle in a safe location. If you have to use the feature while driving, exercise extreme caution at all times so full attention may be given to vehicle operation. Compatible smartphone required. Text rates and/or data usage may apply. <sup>5</sup>Requires CVT. Alcantara<sup>®</sup> is a registered trademark of Alcantara S.p.A. Corporation. Bluetooth<sup>®</sup> word mark and logos are owned by Bluetooth SIG, Inc., and any use of such marks by Nissan is under license. Bose<sup>®</sup> is a registered trademark of The Bose Corporation. HomeLink<sup>®</sup> is a registered trademark of Genetec Corporation. Michelin<sup>®</sup> and Pilot Sport<sup>®</sup> are registered trademarks of Michelin North America, Inc. Siri<sup>®</sup> and Siri<sup>®</sup> Eyes Free are registered trademarks of Apple, Inc. The Sirius<sup>®</sup>, XM<sup>®</sup>, and SiriusXM<sup>®</sup> names and all related marks and logos are trademarks of Sirius XM Radio Inc. This brochure is intended for general descriptive and informational purposes only. It is subject to change and does not constitute an offer, representation or warranty (express or implied) by Nissan North America, Inc. Interested parties should confirm the accuracy of any information in this brochure as it relates to a vehicle directly with Nissan North America, Inc. before relying on it to make a purchase decision. Nissan North America, Inc. reserves the right to make changes, at any time, without prior notice, in prices, colors, materials, equipment, specifications, and models and to discontinue models or equipment. Due to continuous product development and other pre- and post-production factors, actual vehicle, materials and specifications may vary from this brochure. Some vehicles shown with optional equipment. See the actual vehicle for complete accuracy. Availability and delivery times for particular models or equipment may vary. Specifications, options and accessories may differ in Hawaii, U.S. territories and other countries. For additional information on availability, options or accessories, see your Nissan dealer or contact Nissan North America, Inc. At [NissanUSA.com](http://NissanUSA.com), you'll find virtual product demonstrations, a way to "build your own Nissan," a dealer locator, and more information about key Nissan support services. Or if you'd prefer, call **1-800-NISSAN-3** for answers to specific questions about Sentra<sup>®</sup> or any other Nissan vehicle. The Nissan names, logos, product names, feature names, and slogans are trademarks owned by or licensed to Nissan Motor Co. Ltd. and/or its North American subsidiaries. Other trademarks and trade names are those of their respective owners. **Always wear your seat belt, and please drive responsibly.** ©2017 Nissan North America, Inc. <sup>18</sup>Sentra 1820687-N-9/17-70M-CGI