

## NISSAN INTELLIGENT MOBILITY™

Nissan Intelligent Mobility guides everything we do. We're using new technologies to transform cars from mere driving machines into assistants. Together the journey is more confident, connected, and exciting. Whether it's cars that assist in the driving task, or highways that charge your EV as you go along, it's all in the very near future. And it's a future already taking shape in the Nissan you drive today.

### SEE SENTRA® COME TO LIFE

Go to [NissanUSA.com](http://NissanUSA.com) and find an interactive brochure for Sentra and every Nissan in the lineup. Available on desktop, smartphone, or tablet, it's the full product story - including demos, videos, and complete info on trims, colors, and accessories.



Innovation  
that excites

2019  
**SENTRA®**



<sup>1</sup>Available feature. <sup>2</sup>Availability of features varies by model year, model, trim, and package. <sup>3</sup>2019 EPA Fuel Economy Estimates 29/37 city/highway MPG for Sentra S, SV, SR, and SL with CVT. 27/33 city/highway MPG for Sentra SR Turbo. Actual mileage may vary with driving conditions. Use for comparison only. <sup>4</sup>Available services/features may be shown. Compatible connected device may be required. Only use services/features and device when safe and legal to do so. Subject to GPS and wireless network availability and connection, and system/technology limitations. Text rates/data usage/subscription may apply. Some services/features provided by companies not within Nissan or its partners' or agents' control and may be discontinued at any time. For more information, see dealer, Owner's Manual, or [NissanUSA.com/connect/important-information](http://NissanUSA.com/connect/important-information). Terms and conditions of Subscriber Agreement apply. NissanConnect EV features are provided by Nissan North America. Sirius XM Connected Vehicle Services Inc. ("Sirius XM") partners with Nissan North America to provide NissanConnect Services powered by SiriusXM. All stated terms, disclosures and limitations of liability associated with connected vehicle services extend to Sirius XM and its affiliate, Sirius XM Radio Inc. SiriusXM is a registered trademark of Sirius XM Radio Inc. <sup>5</sup>Use Hands Free Text Messaging when parked in a safe location. If you must use while driving, monitor traffic conditions and keep both hands on the steering wheel to prevent collisions. Compatible device required. Message and data rates may apply. <sup>6</sup>Automatic Emergency Braking cannot prevent all collisions and may not provide warning or braking in all conditions. Driver should monitor traffic conditions and brake as needed to prevent collisions. See Owner's Manual for safety information. <sup>7</sup>Blind Spot Warning cannot prevent collisions and may not detect every object or warn in all situations. Driver should always turn and look before changing lanes. See Owner's Manual for safety information. <sup>8</sup>Intelligent Cruise Control uses limited braking and is not a collision avoidance or warning system. Driver should monitor traffic conditions and brake as needed to prevent collisions. See Owner's Manual for safety information. <sup>9</sup>Rear Cross Traffic Alert may not detect all vehicles. See Owner's Manual for safety information. <sup>10</sup>Extra cost option. <sup>11</sup>Xtronic CVT® only. <sup>12</sup>Limited availability. <sup>13</sup>RearView Monitor may not detect every object and does not eliminate blind spots or warn of moving objects. See Owner's Manual for safety information. <sup>14</sup>Driving is serious business and requires your full attention. If you have to use the feature while driving, exercise extreme caution at all times so full attention may be given to vehicle operation. <sup>15</sup>Information displayed is dependent on how vehicle is equipped. <sup>16</sup>Driving is serious business and requires your full attention. If you have to use the connected device while driving, exercise extreme caution at all times so full attention may be given to vehicle operation. <sup>17</sup>Tire Pressure Monitoring System is not a substitute for regular tire pressure checks. See Owner's Manual for safety information. <sup>18</sup>Vehicle must be on for the Easy-Fill Tire Alert to operate. <sup>19</sup>Genuine Nissan Accessories are covered by Nissan's Limited Warranty on Genuine Nissan Replacement Parts, Genuine NISMO® S-Tune Parts, and Genuine Nissan Accessories for the longer of 12 months/12,000 miles (whichever occurs first) or the remaining period under the 3-year/36,000-mile (whichever occurs first) Nissan New Vehicle Limited Warranty. Terms and conditions apply. See dealer, Warranty Information Booklet, or [parts.NissanUSA.com](http://parts.NissanUSA.com) for details. <sup>20</sup>Cargo shown for display purposes only. Cargo and load capacity limited by weight and distribution. Always secure cargo. <sup>21</sup>S 6MT models get 130 horsepower and 128 lb-ft of torque. <sup>22</sup>Brake Assist cannot prevent all collisions and may not provide warning or braking in all conditions. Driver should monitor traffic conditions and brake as needed to prevent collisions. See Owner's Manual for safety information. <sup>23</sup>Air bags are only a supplemental restraint system. Always wear your seat belt. Rear-facing child restraints should not be placed in the front-passenger's seat. All children 12 and under should ride in the rear seat properly secured in child restraints, booster seats, or seat belts according to their size. Air bags will only inflate in certain accidents. See Owner's Manual for safety information. <sup>24</sup>Vehicle Dynamic Control cannot prevent collisions due to abrupt steering, carelessness, or dangerous driving technique. It should remain on when driving, except when freeing the vehicle from mud or snow. See Owner's Manual for safety information. <sup>25</sup>For a period of 36 months/36,000 miles from the date the vehicle is delivered to the first retail buyer or otherwise put into use, whichever is earlier. Alcantara® is a registered trademark of Alcantara S.p.A. Corporation. Android Auto™ is a trademark of Google, Inc. Apple CarPlay™ and Apple Music™ are trademarks of Apple, Inc. Bose® is a registered trademark of The Bose Corporation. Facebook® is a registered trademark of Facebook, Inc. Google Assistant™, Google Maps™, and Google Play™ are trademarks of Google Inc. HomeLink® is a registered trademark of Gentex Corporation. iPhone® and iTunes® are registered trademarks of Apple, Inc. All rights reserved. iPhone® or other external device not included. Michelin® and Pilot Sport® are registered trademarks of Michelin North America, Inc. Pandora® is a registered trademark of Pandora Media. Siri® and Siri® Eyes Free are registered trademarks of Apple, Inc. The Sirius®, XM®, and SiriusXM® names and all related marks and logos are trademarks of Sirius XM Radio Inc. All other trademarks are the property of their respective owners. Twitter® is a registered trademark of Twitter, Inc. YouTube® is a registered trademark of Google, Inc. This brochure is intended for general descriptive and informational purposes only. It is subject to change and does not constitute an offer, representation or warranty (express or implied) by Nissan North America, Inc. Interested parties should confirm the accuracy of any information in this brochure as it relates to a vehicle directly with Nissan North America, Inc., before relying on it to make a purchase decision. Nissan North America, Inc., reserves the right to make changes, at any time, without prior notice, in prices, colors, materials, equipment, specifications, and models and to discontinue models or equipment. Due to continuous product development and other pre- and post-production factors, actual vehicle, materials and specifications may vary from this brochure. Some vehicles shown with optional equipment. See the actual vehicle for complete accuracy. Availability and delivery times for particular models or equipment may vary. Specifications, options and accessories may differ in Hawaii, U.S. territories and other countries. For additional information on availability, options or accessories, see your Nissan dealer or contact Nissan North America, Inc. At [NissanUSA.com](http://NissanUSA.com), you'll find virtual product demonstrations, a way to "build your own Nissan," a dealer locator, and more information about key Nissan support services. Or if you'd prefer, call 1-800-NISSAN-3 for answers to specific questions about Sentra® or any other Nissan vehicle. The Nissan names, logos, product names, feature names, and slogans are trademarks owned by or licensed to Nissan Motor Co. Ltd. and/or its North American subsidiaries. Other trademarks and trade names are those of their respective owners. **Always wear your seat belt, and please drive responsibly.** ©2018 Nissan North America, Inc. <sup>19</sup>2018 Sentra®. 1922559-N-8/18-70M-CGI



Go for the good life with a sedan that upgrades your every day. Head-turning good looks, and turbocharged performance<sup>1</sup> are just the start. Nissan Intelligent Mobility™ gives you a seamless connection and driver-assistance systems.<sup>1,2</sup> The 2019 Nissan Sentra.® Tech that moves you.

See Sentra® in action at:  
[bit.ly/19sentravideo](https://bit.ly/19sentravideo)



**EFFICIENCY THAT GIVES YOU MORE OUT OF EVERY DRIVE**

Sentra® impresses with excellent fuel economy thanks to the 1.8-liter engine teamed with a virtually gearless Xtronic CVT® (Continuously Variable Transmission) that helps maximize efficiency and performance. And the low rolling resistance tires reduce friction to help you move, so you can enjoy up to 37 MPG highway.<sup>3</sup>

- Low Rolling Resistance All-season Tires
- Continuously Variable Valve Timing
- Low Drag Coefficient

**37 MPG**  
HIGHWAY<sup>3</sup>

**A BOLDER RIDE THROUGH LIFE**

With Nissan Intelligent Mobility, we're rethinking driving, technology, and the road ahead. Now the most advanced tech you own is in your driveway. You drive with greater awareness, and can even get an assist when you need it. And you connect like never before - from compatible smartphone to house, driveway to car, it's all one. Ready for what's next? Nissan Intelligent Mobility is changing the way you drive forever, and it's available for everyone right now.<sup>2</sup>



- Available features\* include:
- Automatic Emergency Braking<sup>6</sup>
  - Blind Spot Warning<sup>7</sup>
  - Intelligent Cruise Control<sup>8</sup>
  - Rear Cross Traffic Alert<sup>9</sup>

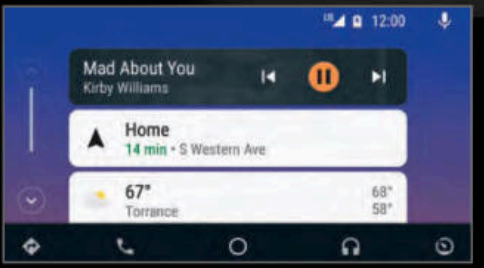
**APPLE CARPLAY™**

People to see? Places to be? Just ask Siri.® Equipped with Siri® voice control, Apple CarPlay™ brings on board your contacts, favorite messaging apps, audio book apps, iTunes® library, Apple Music® playlists, and more. It even works with your steering-wheel control to adjust volume and toggle through screens. Simply plug in your compatible iPhone® and go.<sup>1, 4</sup>



**ANDROID AUTO™**

Know where you're going and when with Google Assistant™ equipped with your schedule and Google Maps™ to help you navigate to your next appointment. Choose a song, change your destination, or respond to a text with your hands on the wheel using the hundreds of available voice commands.<sup>1, 4, 5</sup>



**nismo®**

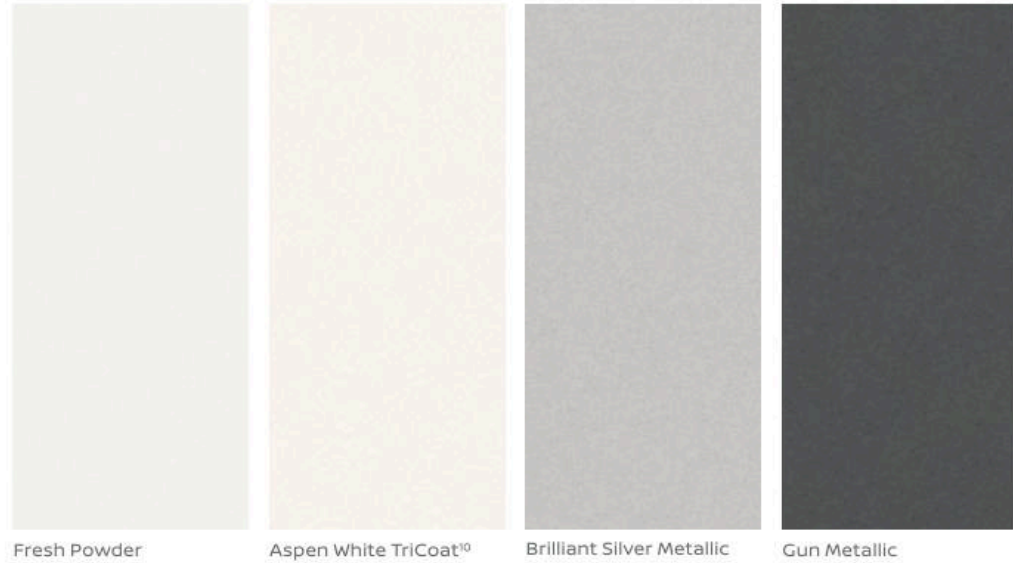
**PASSION WITHOUT A REDLINE**

Since 1984, NISMO has been propelled by maverick engineering with one goal in mind: ultimate Nissan performance. Featuring a track-inspired aerodynamic exterior, NISMO tuning, and an impressive list of styling and performance upgrades, Sentra NISMO ensures your drive will never be the same again.



- 1.6-liter DIG™ turbo-charged engine
- 18" NISMO aluminum-alloy wheels
- NISMO front sport seats with red trim bolsters
- NISMO chrome exhaust finisher
- NISMO Alcantara® and leather-wrapped steering wheel

## CHOOSE YOUR COLOR



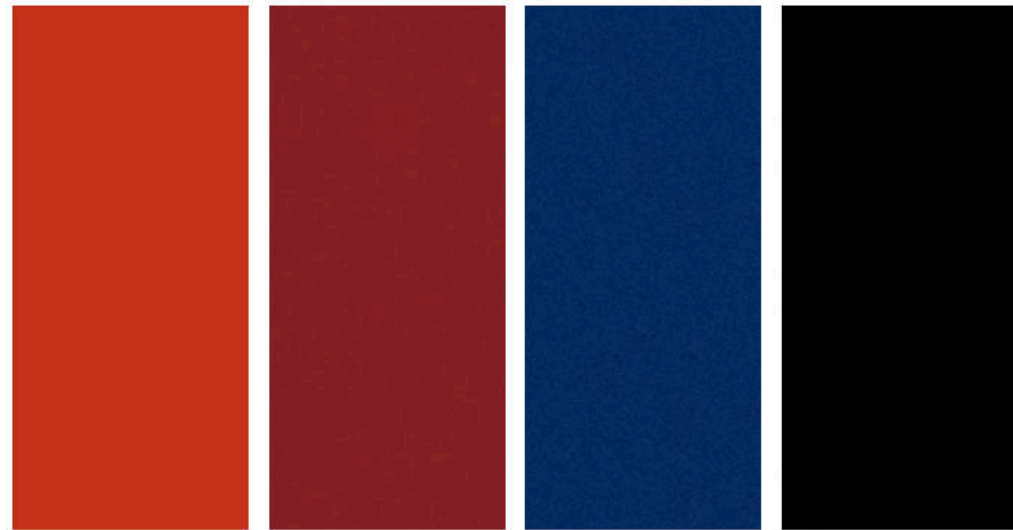
Fresh Powder

Aspen White TriCoat<sup>10</sup>

Brilliant Silver Metallic

Gun Metallic

	S	SV	SR	SL	NISMO <sup>®</sup>
CHARCOAL CLOTH	<input checked="" type="checkbox"/>	<input checked="" type="checkbox"/>			
CHARCOAL LEATHER			<input type="checkbox"/>	<input checked="" type="checkbox"/>	
NISMO SYNTHETIC SUEDE					<input checked="" type="checkbox"/>



Red Alert

Scarlet Ember Tintcoat<sup>10</sup>

Deep Blue Pearl

Super Black

	S	SV	SR	SL	NISMO <sup>®</sup>
CHARCOAL CLOTH		<input checked="" type="checkbox"/>	<input checked="" type="checkbox"/>		
CHARCOAL LEATHER			<input type="checkbox"/>	<input checked="" type="checkbox"/>	
NISMO SYNTHETIC SUEDE					<input checked="" type="checkbox"/>

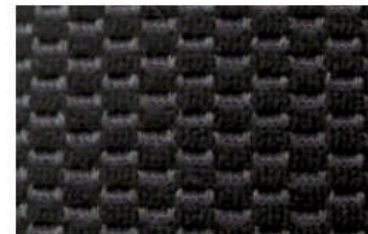
Standard  
 Optional

Nissan has taken care to ensure that the color swatches presented here are the closest possible representations of actual vehicle colors. Swatches may vary slightly due to the printing process and whether viewed in daylight, fluorescent or incandescent light. Please see the actual colors at your dealer.

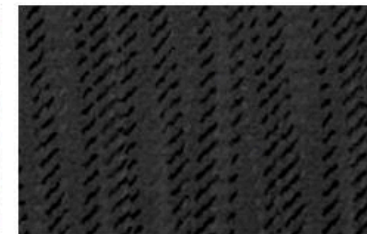
## CHOOSE YOUR INTERIOR



Nissan Sentra<sup>®</sup> SL shown in Charcoal Leather.



Charcoal Cloth  
S



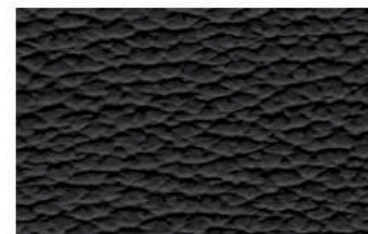
Charcoal Premium Cloth  
SV



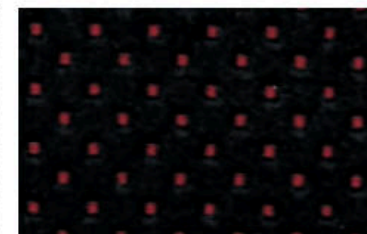
Charcoal Premium Sport Cloth  
SR | SR Turbo



Charcoal Leather  
SR | SR Turbo



Charcoal Leather  
SL



NISMO Synthetic Suede  
NISMO

## CHOOSE YOUR TRIM LEVEL

**S**

- 1.8-liter 4-cylinder engine
- 6-speed manual transmission
- Available Xtronic CVT® (Continuously Variable Transmission)
- Intelligent Auto Headlights
- RearView Monitor<sup>13</sup>
- 7" Touch-screen display
- Advanced Drive-Assist® Display<sup>11, 14, 15</sup>
- Hands-free Text Messaging Assistant<sup>5</sup>
- Bluetooth® Hands-free Phone System<sup>4</sup>

- Siri® Eyes Free<sup>4</sup>
- AM/FM audio system with four speakers
- USB port<sup>16</sup>
- Bluetooth® streaming audio<sup>4</sup>
- 370Z®-inspired steering wheel<sup>11</sup>
- Automatic Emergency Braking<sup>6, 11</sup>
- Tire Pressure Monitoring System (TPMS)<sup>17</sup>



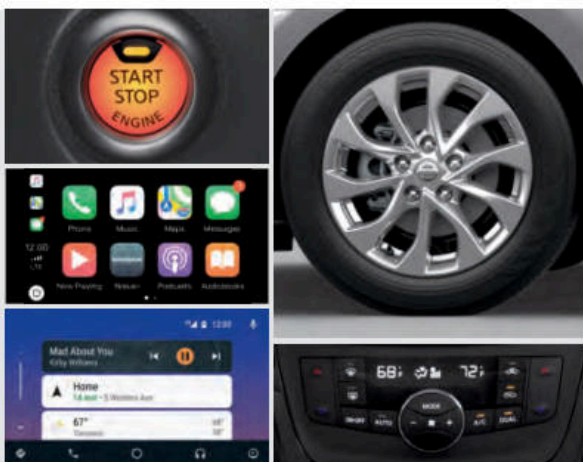
### AVAILABLE PACKAGE:

- Appearance Package

## **SV** INCLUDES S EQUIPMENT PLUS:

- Xtronic CVT®
- Active Understeer Control
- 16" Aluminum-alloy wheels
- Advanced Drive-Assist® Display<sup>14, 15</sup>
- NissanConnect® 7" touch-screen display<sup>4</sup>
- Apple CarPlay™<sup>4</sup>
- Android Auto™<sup>4</sup>
- Nissan Intelligent Key® with Push Button Ignition
- Dual Zone Automatic Temperature Control
- Sliding front armrest

- Rear-seat center armrest
- Premium cloth seat trim
- Piano Black interior trim
- AM/FM audio system with six speakers
- SiriusXM® Radio<sup>4</sup>
- Three USB ports<sup>16</sup>
- Leather-wrapped steering wheel
- Automatic Emergency Braking<sup>6</sup>
- Tire Pressure Monitoring System (TPMS) with Easy-Fill Tire Alert<sup>17, 18</sup>
- Vehicle Security System



## **SR** INCLUDES SV EQUIPMENT PLUS:

- 17" Aluminum-alloy wheels
- LED low-beam projector headlights with LED accents
- Fog lights
- Lower body side sill extensions
- Chrome exhaust finisher

- Rear spoiler with integrated LED brake light
- Dual power heated outside mirrors with LED turn signal indicators
- Intelligent Cruise Control<sup>8</sup>
- Premium sport cloth seat trim
- Heated front seats
- Sport interior trim



### AVAILABLE PACKAGE:

- Premium Package

## **SR TURBO** INCLUDES SR EQUIPMENT PLUS:

- 1.6-liter Direct Injection Gasoline (DIG™) turbocharged 4-cylinder engine
- Xtronic CVT® with Manual Shift Mode
- 11.7" Vented front disc brakes

- 11.5" Solid rear disc brakes
- Tuned suspension and steering
- Power sliding glass moonroof
- Deletes Intelligent Cruise Control

### AVAILABLE PACKAGE:

- Premium Package



## **SL** INCLUDES SV EQUIPMENT PLUS:

- 17" Aluminum-alloy wheels
- LED low-beam projector headlights with LED accents
- Fog lights
- Dual power heated outside mirrors with LED turn signal indicators
- Power sliding glass moonroof
- Intelligent Cruise Control<sup>8</sup>
- Auto-dimming rearview mirror with HomeLink® Universal Transceiver

- 6-way power driver's seat with 2-way power lumbar
- Leather-appointed seats
- Heated front seats
- Bose® Premium Audio System with eight speakers, including dual woofers
- Blind Spot Warning<sup>7</sup>
- Rear Cross Traffic Alert<sup>9</sup>



## **NISMO®** INCLUDES SR TURBO EQUIPMENT PLUS:

- Available 6-speed manual transmission
- NISMO-tuned suspension
- 18" NISMO aluminum-alloy wheels
- NISMO front grille and badging
- NISMO aerodynamic body kit
- NISMO black mirror caps with LED turn signal indicators
- NISMO chrome exhaust finisher
- NISMO tachometer
- NISMO sport front seats with bolsters, synthetic suede trim, and signature red stitching

- Rear seats with signature red stitching
- NISMO Alcantara® and leather-wrapped steering wheel
- NISMO leather-wrapped shift knob
- Carbon Fiber Look center console and door trim
- Bose® Premium Audio System with eight speakers, including dual woofers
- Deletes: Active Understeer Control, fog lights, power sliding glass moonroof, rear center armrest, Automatic Emergency Braking



CHOOSE YOUR PACKAGE

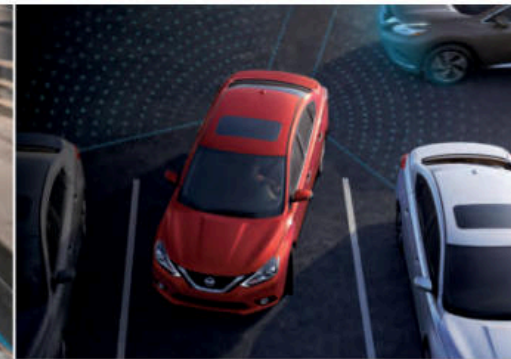


**APPEARANCE PACKAGE** | S

- Available on S Xtronic CVT® only
- 16" Aluminum-alloy wheels
- Rear spoiler

**ALL-WEATHER PACKAGE** | SV

- Dual power heated outside mirrors
- Heated front seats



**SPECIAL EDITION PACKAGE** | SV

- 17" Aluminum-alloy wheels
- 11.5" Solid rear disc brakes
- Power sliding glass moonroof with tilt feature

- Dual illuminated visor vanity mirrors
- Intelligent Cruise Control®
- Blind Spot Warning<sup>7</sup>

- Rear Cross Traffic Alert<sup>9</sup>
- Special Edition badge



**PREMIUM PACKAGE** | SR

- Power sliding glass moonroof with tilt feature
- HomeLink® Universal Transceiver
- Auto-dimming rearview mirror
- Dual illuminated visor vanity mirrors
- Leather-appointed seats

- 6-way power driver's seat with 2-way power lumbar
- Bose® Premium Audio System with eight speakers, including dual woofers
- Blind Spot Warning<sup>7</sup>
- Rear Cross Traffic Alert<sup>9</sup>



**PREMIUM PACKAGE** | SR TURBO

- HomeLink® Universal Transceiver
- Auto-dimming rearview mirror
- Dual illuminated visor vanity mirrors
- Leather-appointed seats

- 6-way power driver's seat with 2-way power lumbar
- Bose® Premium Audio System with eight speakers, including dual woofers

- Blind Spot Warning<sup>7</sup>
- Rear Cross Traffic Alert<sup>9</sup>

## CHOOSE YOUR ACCESSORIES



Every Genuine Nissan Accessory is custom-fit, custom-designed and durability-tested. Each one is backed by Nissan's 3-year/36,000-mile (whichever occurs first) limited warranty (if installed by dealer at the time of purchase), and can be financed when installed by dealer at time of purchase.<sup>19</sup>

- A. Impact Sensor**  
Keep your Sentra alarmed, so you don't have to be.
- B. Hideaway Trunk Net and Carpeted Trunk Mat (sold separately)<sup>20</sup>**  
Catch of the day – no mess!
- C. All-season Floor Mats**  
Neither sleet, snow, nor mud shall mess your ride.
- D. External Ground Lighting (SR only)**  
Lights. Sentra® Action!
- E. Illuminated Kick Plates**  
Fewer scuffs and a grand entry, every time.
- F. Interior Accent Lighting**  
Bring the bling with 20 pre-programmed color options.
- G. Frameless Auto-dimming Rearview Mirror with Universal Remote**  
Perfect for dim bulbs driving with their brights on.
- H. Clear Rear Bumper Protector**  
Shields up! Keeps nicks and scratches at bay.

### Additional Accessories:

- Sport Pedals
- Dual Rear USB Charging Ports<sup>16</sup>
- Frameless Prizm Rearview Mirror with Universal Remote
- Carpeted Floor Mats
- Sentra SR Turbo Carpeted Floor Mats
- NISMO® Carpeted Floor Mats
- Sentra SR Turbo Carpeted Trunk Mat
- NISMO Carpeted Trunk Mat
- Sill Plate Protector
- Sentra SR Turbo Sill Plate Protector
- NISMO Sill Plate Protector
- Rubber Trunk Protector Tray
- Moonroof Wind Deflector
- Nissan WiFi<sup>4</sup>
- And More

## GENUINE NISSAN ACCESSORIES OFF TO A GREAT START

For more information and to shop online for Sentra® Genuine Nissan Accessories, go to [bit.ly/19sentra-estore](http://bit.ly/19sentra-estore)



**Nissan Sentra® SV** shown in Scarlet Ember Tintcoat with Fog Lights, Body Side Moldings, Splash Guards, and Rear Decklid Spoiler.

**SPECIFICATIONS**

Engines	S	SV	SR	SR Turbo	SL	NISMO*
1.8-liter DOHC 16-valve 4-cylinder engine <sup>21</sup>	■	■	■		■	
—Horsepower – 124 hp @ 6,000 rpm						
—Torque – 125 lb-ft @ 3,600 rpm						
1.6-liter Direct Injection Gasoline (DIG™) turbocharged 4-cylinder engine				■		■
—Horsepower – 188 hp @ 5,600 rpm						
—Torque – 177 lb-ft @ 5,200 rpm						
Continuously Variable Valve Timing Control System (CVTCS) on intake and exhaust valves	■	■	■	■	■	■
Nissan Direct Ignition System	■	■	■	■	■	■

Drivetrain	S	SV	SR	SR Turbo	SL	NISMO*
6-speed manual transmission	■					□
Xtronic CVT® (Continuously Variable Transmission)	□	■	■		■	
Xtronic CVT® with Manual Shift Mode				■		■

Brakes	S	SV	SR	SR Turbo	SL	NISMO*
11.0" Vented front disc brakes	■	■	■		■	
11.7" Vented front disc brakes				■		■
9.0" Rear drum brakes	■	■				
11.5" Solid rear disc brakes		SE	■	■	■	■
4-wheel Anti-lock Braking System (ABS)	■	■	■	■	■	■
Electronic Brake force Distribution (EBD)	■	■	■	■	■	■
Brake Assist <sup>22</sup>	■	■	■	■	■	■

Suspension/Chassis Bracing/Steering	S	SV	SR	SR Turbo	SL	NISMO*
Independent strut front suspension with front stabilizer bar	■	■	■	■	■	■
Torsion beam rear suspension with integrated rear stabilizer bar	■	■	■	■	■	■
Active Understeer Control	□	■	■	■	■	
Tuned suspension and steering				■		
NISMO-tuned suspension						■

Wheels/Tires	S	SV	SR	SR Turbo	SL	NISMO*
16" x 6.5" steel wheels with wheel covers	■					
16" x 6.5" aluminum-alloy wheels	A1	■				
17" x 6.5" 10-spoke aluminum-alloy wheels			■	■		
17" x 6.5" split 5-spoke aluminum-alloy wheels		SE			■	
18" NISMO 10-spoke aluminum-alloy wheels						■
P205/55R16 all-season tires	■	■				
P205/50R17 all-season tires			■	■	■	
Michelin® Pilot Sport® A/S 3+ P215/45R18 all-season tires						■

■ Standard  
 □ Optional  
**A1** Part of S Appearance Package  
**A2** Part of SV All-Weather Package  
**SE** Part of SV Special Edition Package  
**P1** Part of SR Premium Package  
**P2** Part of SR Turbo Premium Package

Exterior Features	S	SV	SR	SR Turbo	SL	NISMO*
Halogen headlights	■	■				
LED low-beam projector headlights with LED accents			■	■	■	■
Intelligent Auto Headlights	■	■	■	■	■	■
Fog lights				■	■	
LED Daytime Running Lights						■
Lower body side sill extensions				■		
Chrome exhaust finisher			■	■		
NISMO chrome exhaust finisher						■
Rear spoiler	A1					■
Rear spoiler with integrated LED brake light			■	■		
NISMO aerodynamic body kit						■
Dual power outside mirrors	■	■				
Dual power heated outside mirrors		A2				
Dual power heated outside mirrors with LED turn signal indicators			■	■	■	■
NISMO black outside mirrors						■
Power sliding glass moonroof		SE	P1	■	■	

Comfort/Convenience	S	SV	SR	SR Turbo	SL	NISMO*
7" touch-screen display	■					
NissanConnect® 7" touch-screen display <sup>4</sup>		■	■	■	■	■
Apple CarPlay™ <sup>4</sup>		■	■	■	■	■
Android Auto™ <sup>4</sup>		■	■	■	■	■
Siri® Eyes Free <sup>4</sup>	■	■	■	■	■	■
Hands-free Text Messaging Assistant <sup>5</sup>	■	■	■	■	■	■
Bluetooth® Hands-free Phone System <sup>4</sup>	■	■	■	■	■	■
HomeLink® Universal Transceiver			P1	P2	■	
Auto-dimming rearview mirror			P1	P2	■	
RearView Monitor <sup>15</sup>	■	■	■	■	■	■
Advanced Drive-Assist® Display <sup>14, 15</sup>	□	■	■	■	■	■
NISMO tachometer						■
Nissan Intelligent Key® with Push Button Ignition		■	■	■	■	■
Dual Zone Automatic Temperature Control		SE	■	■	■	■
Intelligent Cruise Control <sup>8</sup>		SE	P1	P2	■	
Dual illuminated visor vanity mirrors		SE	P1	■	■	
Center room LED dim light		SE	P1	■	■	

Seating/Appointments	S	SV	SR	SR Turbo	SL	NISMO*
6-way manual driver's seat	■	■				■
6-way power driver's seat with 2-way power lumbar			P1	P2	■	
4-way manual front-passenger's seat	■	■	■	■	■	■
NISMO sport front seats						■
Cloth seat trim	■					
Premium cloth seat trim		■				
Premium sport cloth seat trim			■	■		
Leather-appointed seats			P1	P2	■	
NISMO synthetic suede seat trim with signature red stitching						■
Heated front seats		A2	■	■	■	■
370Z®-inspired steering wheel	□	■	■	■	■	■
Leather-wrapped steering wheel		■	■	■	■	

Seating/Appointments (continued)	S	SV	SR	SR Turbo	SL	NISMO*
NISMO Alcantara® and leather-wrapped steering wheel and shift knob						■
Silver interior trim	■					
Piano Black interior trim		■			■	
Sport interior trim			■	■		
Carbon Fiber look interior trim						■

Audio/Entertainment	S	SV	SR	SR Turbo	SL	NISMO*
AM/FM audio system with four speakers	■					
AM/FM audio system with six speakers		■	■	■		
Bose® Premium Audio System with eight speakers, including dual woofers			P1	P2	■	■
USB port <sup>16</sup>	■					
Three USB ports <sup>16</sup>		■	■	■	■	■
SiriusXM® Radio <sup>4</sup>		■	■	■	■	■
Bluetooth® streaming audio <sup>4</sup>	■	■	■	■	■	■

Safety/Security	S	SV	SR	SR Turbo	SL	NISMO*
Nissan Advanced Air Bag System with dual-stage supplemental front air bags with seat belt sensors and occupant-classification sensor <sup>23</sup>	■	■	■	■	■	■
Driver and front-passenger seat-mounted side-impact supplemental air bags <sup>23</sup>	■	■	■	■	■	■
Roof-mounted curtain side-impact supplemental air bags with rollover sensor for outboard occupant head protection <sup>23</sup>	■	■	■	■	■	■
Vehicle Dynamic Control (VDC) <sup>24</sup> with Traction Control System (TCS)	■	■	■	■	■	■
Automatic Emergency Braking <sup>6</sup>	□	■	■	■	■	
Blind Spot Warning <sup>7</sup>		SE	P1	P2	■	
Rear Cross Traffic Alert <sup>9</sup>		SE	P1	P2	■	
LATCH System (Lower Anchors and Tethers for CHildren)	■	■	■	■	■	■
Tire Pressure Monitoring System (TPMS) <sup>17</sup>	■					
Tire Pressure Monitoring System (TPMS) with Easy-Fill Tire Alert <sup>17, 18</sup>		■	■	■	■	■

**DIMENSIONS/CAPACITIES/WEIGHTS/MPG**

Exterior Dimensions - Inches						
Wheelbase						106.3
Overall length						182.1 (182.5 SR models, 183.6 NISMO models)
Overall width/height						69.3/58.9
Track width						60.2
<b>Aerodynamics - Cd</b>	<b>S</b>	<b>SV</b>	<b>SR</b>	<b>SR Turbo</b>	<b>SL</b>	<b>NISMO</b>
Drag coefficient	0.29	0.29	0.29	0.29	0.30	0.29

Interior Dimensions (front/rear) - Inches	
Head room without moonroof	39.4/36.7
Head room with moonroof	38.5/36.7
Leg room	42.5/37.4
Hip room	50.9/50.1
Shoulder room	54.7/53.9

Capacities	
Seating capacity	5
EPA interior passenger volume (cu. ft.)	95.9
EPA cargo volume (cu. ft.)	15.1
Fuel tank (gals.)	13.2

Curb Weights - Lbs.						
<b>Base total</b>	<b>S</b>	<b>SV</b>	<b>SR</b>	<b>SR Turbo</b>	<b>SL</b>	<b>NISMO</b>
Manual transmission	2,851	-	-	-	-	3,044
Xtronic CVT®	2,889	2,895	2,921	3,090	2,976	3,112

2019 EPA Fuel Economy Estimates <sup>3</sup>						
<b>City/Highway/Combined MPG</b>	<b>S</b>	<b>SV</b>	<b>SR</b>	<b>SR Turbo</b>	<b>SL</b>	<b>NISMO</b>
Manual transmission	27/35/30	-	-	-	-	25/31/27
Xtronic CVT®	29/37/32	29/37/32	29/37/32	27/33/29	29/37/32	25/30/27

**NISSAN ROADSIDE ASSISTANCE**

Your peace of mind is on us. For 36 months or 36,000 miles, whichever comes first, your new Nissan is covered for the following:<sup>25</sup>

- Flat-tire changes
- Trip Interruption benefits
- Jump starts
- Vehicle lockouts
- Emergency fuel delivery

Follow Nissan on:



visit [NissanUSA.com/sentra](http://NissanUSA.com/sentra)

PRINTED IN USA