




TITAN®

2024



inventory information. ²⁵Available only on Nissan vehicles with AT&T-compatible in-vehicle Wi-Fi hotspot capability. Subject to third party service availability. Trial activation required. Trial ends when all data is used or period ends, whichever comes first. Use features only when safe and legal. Data charges may apply. **Subject to AT&T terms and conditions and its privacy policy, and are not within Nissan's control. Visit www.att.com/csa for complete terms and conditions.** Trial subscription is subject to change or early termination at any time without notice. Trademarks and trade names are those of their respective owners. Apple CarPlay,[®] Apple Music,[®] Apple Watch,[®] Siri,[®] and Siri[®] Eyes Free are registered trademarks of Apple, Inc. Bilstein[®] is a registered trademark of ThyssenKrupp Bilstein GmbH. Bluetooth[®] word mark and logos are owned by Bluetooth SIG, Inc. and any use of such marks by Nissan is under license. Facebook[®] is a registered trademark of Facebook, Inc. Fender[®] is a registered trademark of Fender Musical Instruments Corporation. Google, Android Auto, Google Maps, YouTube Music, and other marks are trademarks of Google LLC. Google Assistant is not available in certain languages and countries. To use Android Auto on your car display, you'll need an Android phone running Android 8 or higher, an active data plan, and the Android Auto app. HomeLink[®] is a registered trademark of Gentex Corporation. Instagram[®] is a registered trademark of Instagram, LLC. iPhone[®] is a registered trademark of Apple, Inc. All rights reserved. iPhone[®] or other external device not included. KICKER[®] is a registered trademark of Stillwater Designs. The Sirius[®], XM[®], and SiriusXM[®] names and all related marks and logos are trademarks of Sirius XM Radio Inc. Twitter[®] is a registered trademark of Twitter, Inc. Yakima[®] is a registered trademark of Yakima Products, Inc. This brochure is intended for general descriptive and informational purposes only. It is subject to change and does not constitute an offer, representation or warranty (express or implied) by Nissan North America, Inc. Interested parties should confirm the accuracy of any information in this brochure as it relates to a vehicle directly with Nissan North America, Inc. before relying on it to make a purchase decision. Nissan North America, Inc. reserves the right to make changes, at any time, without prior notice, in prices, colors, materials, equipment, specifications, and models and to discontinue models or equipment. Due to continuous product development and other pre- and post-production factors, actual vehicle, materials and specifications may vary from this brochure. Some vehicles shown with optional equipment. See the actual vehicle for complete accuracy. Availability and delivery times for particular models or equipment may vary. Specifications, options and accessories may differ in Hawaii, U.S. territories and other countries. For additional information on availability, options or accessories, see your Nissan dealer or contact Nissan North America, Inc. At NissanUSA.com, you'll find virtual product demonstrations, a way to "build your own Nissan," a dealer locator, and more information about key Nissan support services. Or if you'd prefer, call 1-800-NISSAN-3 for answers to specific questions about TITAN[®]/TITAN XD[®] or any other Nissan vehicle. The Nissan names, logos, product names, feature names, and slogans are trademarks owned by or licensed to Nissan Motor Co. Ltd. and/or its North American subsidiaries. Other trademarks and trade names are those of their respective owners. **Always wear your seat belt, and please drive responsibly.** ©2023 Nissan North America, Inc. 24 TITAN[®]. 2417502-N-9/23-60K-KSL



TITAN®
Crew Cab PRO-4X®

TITAN XD®
Crew Cab SV

TITAN
King Cab® SV

TITAN XD
Crew Cab Platinum Reserve

TITAN
Crew Cab Bronze Edition¹

America's Best Truck Warranty
5 YEARS/100,000 MILES
BUMPER-TO-BUMPER WARRANTY²

TITAN

See dealer for limited warranty details.

Best-in-Class Standard
Horsepower (excluding EVs)³
400-Horsepower Endurance™ V8⁴

Most Standard Safety
Technology in its Class
(excluding EVs)⁵

Born ready

TITAN and TITAN XD boast so many ways to get the job done. Flex your muscles with 400 horsepower and capability to tow up to 11,050 lbs. (TITAN XD SV w/ Convenience Package).^{4,6,7,8} Command attention with dominating style. Tackle jobs and projects with confidence and capability, powered by class-leading standard horsepower.³ TITAN's mission is to help you accomplish yours. Smart. Tough. Ready for just about everything.



Rear Automatic Braking¹²

Standard Nissan Safety Shield® 360

Nissan Intelligent Mobility® is forever changing how you move with technology that makes you feel more connected, confident, and excited. As part of Nissan Intelligent Mobility, Nissan Safety Shield 360 includes features that help you see more, sense more, and can give you an assist when you need it. The following Safety Shield 360 features are standard on all 2024 TITAN® and TITAN XD® models.^{9,10}

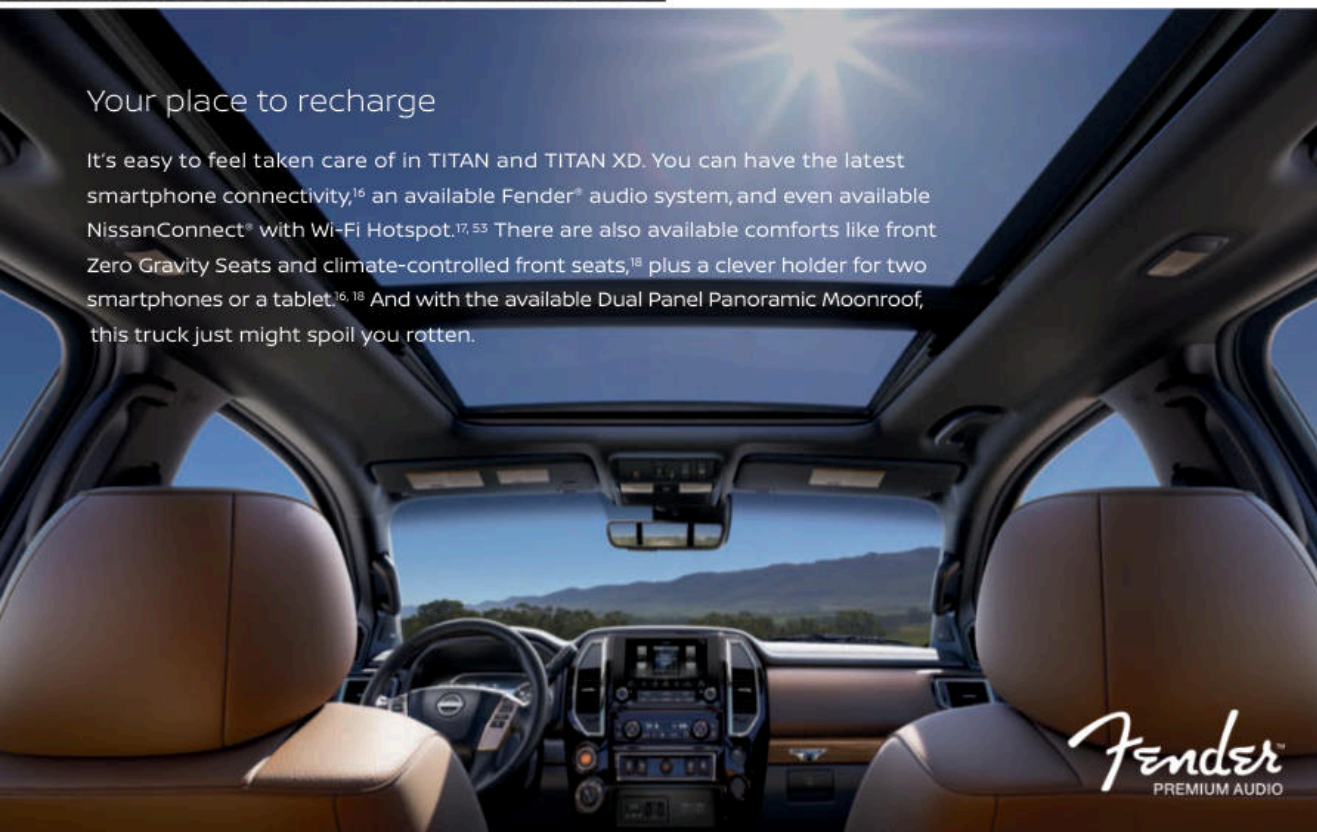
- | | | |
|---|--------------------------------------|--|
| Automatic Emergency Braking with Pedestrian Detection ¹¹ | Rear Automatic Braking ¹² | Rear Cross Traffic Alert ¹³ |
| Blind Spot Warning ¹⁴ | Lane Departure Warning ¹⁵ | High Beam Assist |



Intelligent Cruise Control¹⁹



Lane Departure Warning¹⁵



Your place to recharge

It's easy to feel taken care of in TITAN and TITAN XD. You can have the latest smartphone connectivity,¹⁶ an available Fender® audio system, and even available NissanConnect® with Wi-Fi Hotspot.^{17, 53} There are also available comforts like front Zero Gravity Seats and climate-controlled front seats,¹⁸ plus a clever holder for two smartphones or a tablet.^{16, 18} And with the available Dual Panel Panoramic Moonroof, this truck just might spoil you rotten.

Fender
PREMIUM AUDIO



Connectivity, made personal

Available Wireless Apple CarPlay® integration People to see? Places to be? Just ask Siri.® Equipped with Siri® voice control, wireless Apple CarPlay® (shown on left) brings your contacts, favorite messaging apps, Apple Music® playlists, Apple Maps, and more on board to your TITAN or TITAN XD. Simply connect your compatible iPhone® and go.^{16, 17, 20, 21}

Android Auto™ Talk to Google Assistant on Android Auto™ and get things done with your voice. Easily send messages, get directions, control media, and more. Just say, "Hey Google" or, in compatible vehicles, long-press the voice control button on your steering wheel to get started.^{16, 17, 20, 21}





Like having a team of spotters

This is your Integrated Command Center. Gaze into the super-size 9" color touch-screen, and line up a trailer with ease using the Intelligent Around View® Monitor. And with the system's virtual composite 360° bird's-eye view, you've got enhanced visibility to help you maneuver — even in tight spots. It also gives you an on-screen alert when it detects moving objects near your vehicle.^{17, 18, 22, 23, 24}

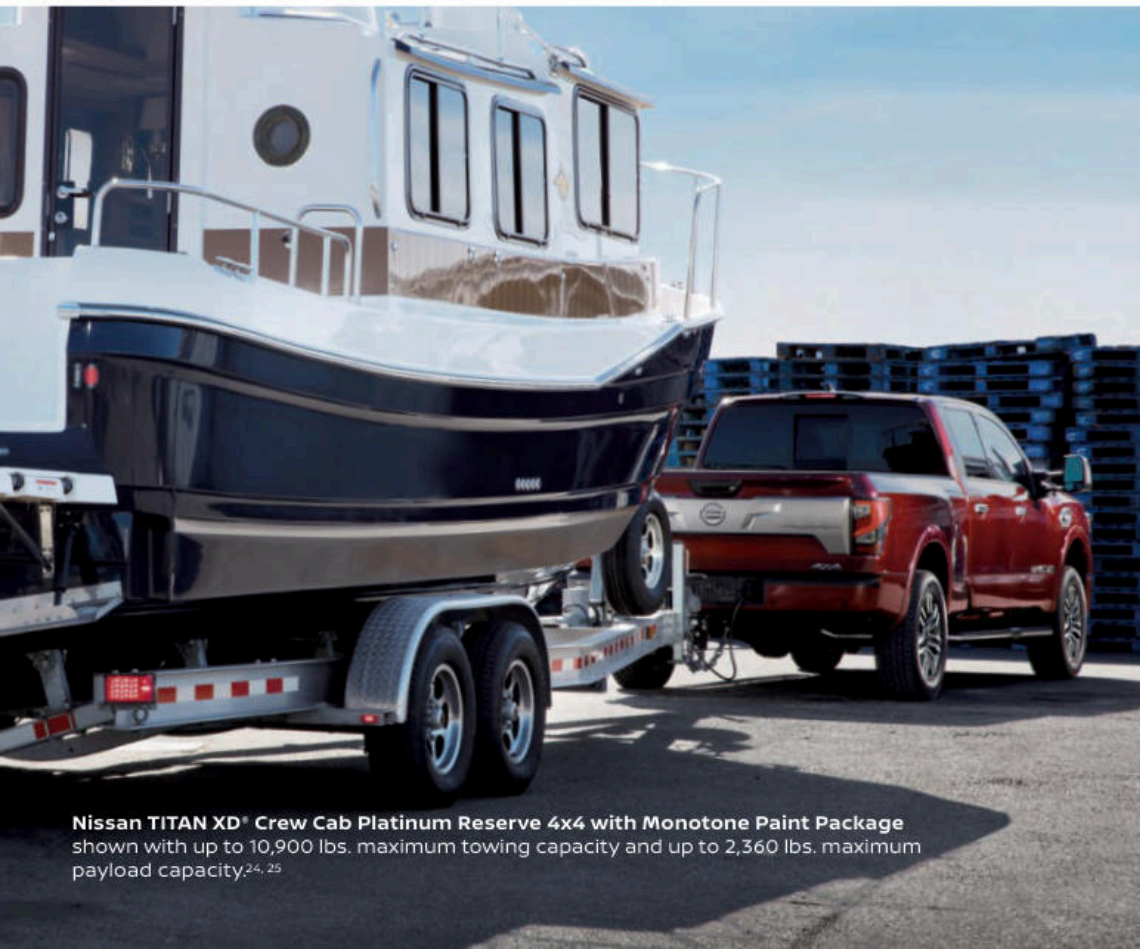
Towing meets technology

The innovative trailer light check makes it easier to tow — even when you're going solo. Once you've hooked up your trailer, you can easily check all brake light connections by cycling through the lights with your Nissan Intelligent Key®. No muss, no fuss, and no help needed.^{18, 24}



The bed makes the truck

TITAN® and TITAN XD® are ready to help you tackle the tough jobs. TITAN's truck bed is smart, strong, and capable, with available features like a spray-on bedliner, Utili-track® multi-channel system,²⁶ 120-volt in-bed power outlet,²⁷ and bright LED bed lighting.¹⁸



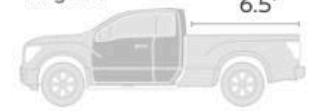
Nissan TITAN XD® Crew Cab Platinum Reserve 4x4 with Monotone Paint Package shown with up to 10,900 lbs. maximum towing capacity and up to 2,360 lbs. maximum payload capacity.^{24, 25}



Nissan TITAN® Crew Cab PRO-4X® 4x4 with Utility, Convenience, and Moonroof Packages shown with up to 9,130 lbs. maximum towing capacity and up to 1,650 lbs. maximum payload capacity.^{24, 25}

Available bed lengths

TITAN King Cab® 6.5'



TITAN Crew Cab 5.5'



TITAN XD Crew Cab 6.5'



Available in your size

To make sure you have the right equipment for the job, TITAN and TITAN XD give you the flexibility the job requires with two available bed lengths, depending on cab configuration.

Bold PRO-4X® style

The 2024 PRO-4X stands further out from the crowd – with unique bold accents and an aggressive style, it shows it's ready to take on the rough stuff. You'll see the unique PRO-4X insignia all over the exterior, and the interior is a style knockout, too, with embroidered logos, contrasting stitching, and metallic-tone accent trim.



All-terrain technology

PRO-4X takes advantage of advanced technology to help you tackle many challenging conditions. A 7" high-resolution Advanced Drive-Assist® Display includes a dedicated off-road display as well as a Tire Pressure Monitoring System.^{28, 29} The available Intelligent Around View® Monitor is a game changer, helping you rock crawl and avoid obstacles you might not otherwise see.^{18, 22}

18" All-terrain
Tires

Electronic Locking
Rear Differential

Bilstein® Off-road
Performance Shocks



Just add dirt

Designed by off-roaders, for off-roaders, the PRO-4X comes equipped with 18" all-terrain tires, an electronic locking rear differential, Bilstein® off-road performance shocks, and skid plates to protect the lower radiator and transfer case, as well as the transmission, fuel tank, and oil pan.³⁰





Nissan TITAN® Crew Cab PRO-4X® 4x4 shown with up to 9,130 lbs. maximum towing capacity and up to 1,650 lbs. maximum payload capacity.^{24, 25}



TITAN® / TITAN XD®
A standard V8? Check.

The potent Endurance® V8 gas engine features Direct Injection, a 4-valve-per-cylinder design, and Variable Valve Event and Lift (VVEL™) technology for power, efficiency, and refinement you can feel.³¹

400

Horsepower⁴

413

lb-ft of Torque⁴

TITAN XD

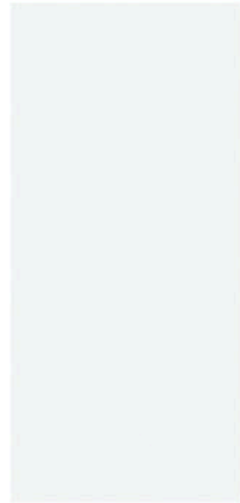
Tow like a pro

TITAN XD's integrated gooseneck hitch and 7-pin in-bed wiring harness give you more ways to tow.²⁴ Engineered directly into the frame, the hitch is ready to help you handle the big loads with up to 11,050 lbs. maximum towing capacity.^{6, 18} And when not in use, the ball is removable and stores in a convenient available storage bag.



Nissan TITAN XD® Crew Cab Platinum Reserve 4x4 shown with up to 11,050 lbs. maximum towing capacity and up to 2,360 lbs. maximum payload capacity.^{24, 25}

CHOOSE YOUR COLOR



Glacier White



Pearl White TriCoat³²



Gun Metallic



Baja Storm Metallic³²



Tactical Green Metallic³²

	SV	PRO-4X [®]	PR
Black Cloth	<input type="checkbox"/>	<input type="checkbox"/>	
Beige Cloth	<input type="checkbox"/>		
Black Leather ³⁴		<input checked="" type="checkbox"/> C2	
Premium Brown Leather ³⁴			<input checked="" type="checkbox"/> 33



Cardinal Red TriCoat³²



Red Alert



Deep Blue Pearl



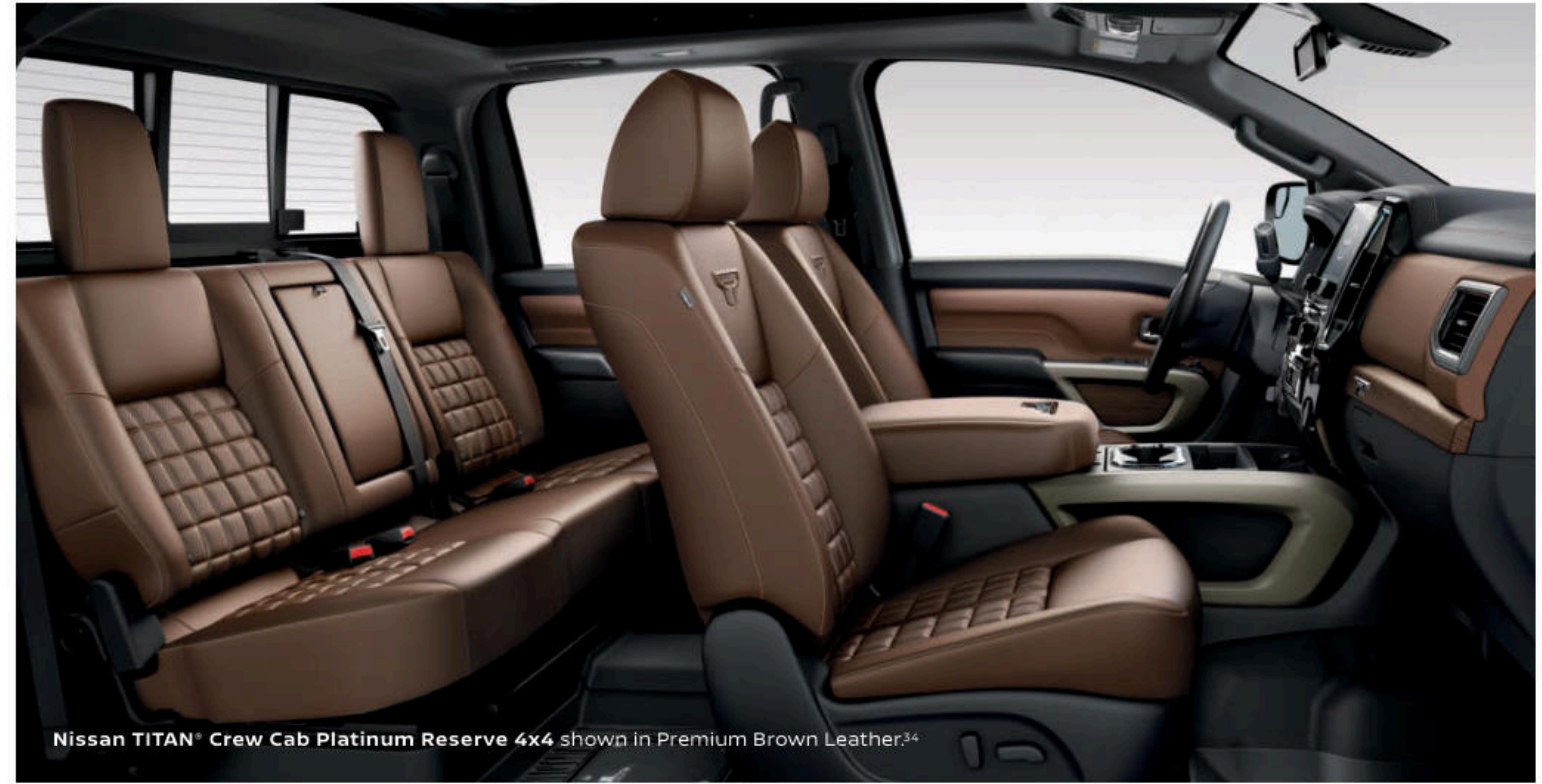
Super Black

Standard
 C2 Part of PRO-4X Convenience Package
 BE Part of Bronze Edition¹

Nissan has taken care to ensure that the color swatches presented here are the closest possible representations of actual vehicle colors. Swatches may vary slightly due to the printing process and whether viewed in daylight, fluorescent or incandescent light. Please see the actual colors at your Nissan dealer.

	SV	PRO-4X [®]	PR
Black Cloth	<input type="checkbox"/>	<input type="checkbox"/>	
Beige Cloth	<input type="checkbox"/>		
Black Leather ³⁴		<input checked="" type="checkbox"/> C2	
Premium Brown Leather ³⁴			<input checked="" type="checkbox"/> 33

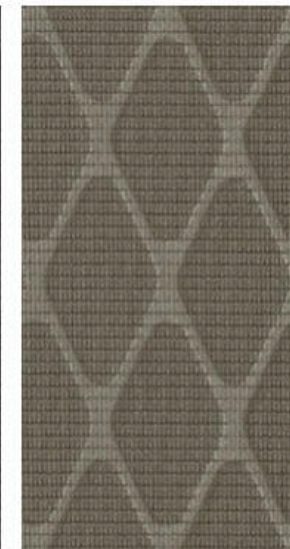
CHOOSE YOUR INTERIOR



Nissan TITAN[®] Crew Cab Platinum Reserve 4x4 shown in Premium Brown Leather³⁴



Black Cloth
SV



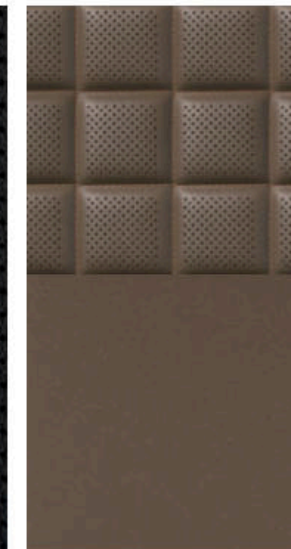
Beige Cloth
SV



Black Cloth
PRO-4X[®]



Black Leather³⁴
PRO-4X[®]



Premium Brown Leather³⁴
Platinum Reserve

CHOOSE YOUR TRIM LEVEL

SV

5.6-liter 32-valve V8 engine, 9-speed automatic transmission, 6.5-ft truck bed, 13" front and rear vented disc brakes, Intelligent Cruise Control,¹⁹ Intelligent Forward Collision Warning,³⁵ Automatic Emergency Braking with Pedestrian Detection,¹¹ Lane Departure Warning,¹⁵ Blind Spot Warning,¹⁴ Rear Cross Traffic Alert,¹³ Rear Sonar System,³⁶ Rear Automatic Braking,¹² High Beam Assist, Intelligent Driver Alertness,³⁷ Hill start assist, Vehicle Dynamic Control (VDC)³⁸ with Traction Control System (TCS), Trailer sway control,²⁴ 18" Dark-painted machine-finished aluminum-alloy wheels (TITAN only), Removable front aero spoiler (TITAN only), Oil pan, fuel tank, and transmission skid plates (4x4 only), Front tow hooks (4x4 only), Pre-wiring for off-road lighting, LED taillights, Body-color front and rear bumpers, Power heated black outside mirrors, Overhead LED cargo bed lights, Remote keyless entry with push button ignition, Rear Door Alert,³⁹ 40/20/40-split bench front seat with flip-down center seat (Crew Cab only), 60/40-split bench rear seat with center flip-down armrest, Stain-resistant cloth seat trim, Column shifter with manual shift mode, 7" Advanced Drive-Assist[®] Display,²⁸ NissanConnect[®] 8" color touch-screen display,¹⁷ Apple CarPlay[®] integration,¹⁷ Android Auto[™] compatibility,¹⁷ Hands-free Text Messaging Assistant,²⁰ Bluetooth[®] Hands-free Phone System,¹⁷ SiriusXM,¹⁷ Streaming Audio via Bluetooth,¹⁷ AM/FM audio system, One USB-A and one USB-C port,¹⁶ Illuminated steering wheel-mounted audio controls, Six speakers

King Cab[®] Adds: Wide-opening rear doors, Front overhead storage console, Front Sonar System³⁶

Crew Cab Adds: 5.5-ft truck bed, Power rear side windows, Two additional cup holders

XD SV Adds: Switch-operated 2-speed transfer case, 14" Front and rear vented disc brakes, 17" Styled steel wheels, LT245/75R17 all-season tires, Trailer brake controller,²⁴ Trailer light check,²⁴ Power heated manually extendable tow mirrors with turn signal indicators and convex spotter mirror, Side mirrors with puddle lights, Class IV tow hitch receiver with 4-pin/7-pin wiring harness²⁴

SV CONVENIENCE PACKAGE: Standard on King Cab



PLATINUM RESERVE INCLUDES SV EQUIPMENT PLUS:

Intelligent Around View[®] Monitor,²² Front and Rear Sonar System,³⁶ Traffic Sign Recognition,⁴⁰ Trailer brake controller,²⁴ Trailer light check,²⁴ 20" Two-tone painted aluminum-alloy wheels (TITAN only), Removable front aero spoiler, Front tow hooks, LED headlights with LED signature Daytime Running Lights, LED taillights with integrated LED signature, LED fog lights, Two-tone exterior paint, Brushed satin-finished grille and tailgate finisher, Power-folding and auto-dimming driver's outside mirror (TITAN only), Outside mirrors with reverse tilt-down feature, Chrome mirror caps, Power sliding back window with defroster, Running boards with chrome accents, Utili-track[®] Channel System with two tie-down cleats,²⁶ Factory-applied spray-on bedliner, Bed-mounted 120-volt AC power outlet,²⁷ LED under-rail bed and tailgate area illumination, Class IV tow hitch receiver with 4-pin/7-pin wiring harness,²⁴ Dual Zone Automatic Temperature Control, Rear air conditioning vents, Nissan Intelligent Key with Push Button Ignition, Remote Engine Start System⁴¹ with Intelligent Climate Control, Power tilt and telescoping steering column, Auto-dimming rearview mirror, HomeLink[®] Universal Transceiver, Center console with 120-volt and 12-volt outlets and smartphone holder,^{16, 27} Interior mood lighting, Front overhead storage console, Lockable rear-seat cargo organizer, Front captain's chairs with 8-way power adjustable driver's seat and power lumbar, 4-way power adjustable passenger seat, Climate-controlled front seats (heated and cooled), Heated outboard rear seats, Memory System — driver's seat, steering wheel, and outside mirrors, Premium leather-appointed seats with Platinum Reserve logos, Heated leather-wrapped steering wheel, Metallic kick plate finisher with Platinum Reserve logo, NissanConnect[®] 9" color touch-screen display,¹⁷ Nissan Door to Door Navigation with Premium Traffic,²¹ Wireless Apple CarPlay[®] integration,¹⁷ NissanConnect[®] Services powered by SiriusXM with trial access to 5-year Select, 5-year Plus, and 3-year Premium packages,¹⁷ Wi-Fi Hotspot,^{17, 53} Fender[®] premium audio system with 12 speakers, Two rear illuminated USB-A ports

XD Platinum Reserve Adds: 20" Dark-painted machine-finished aluminum-alloy wheels, Integrated gooseneck hitch with 7-pin in-bed wiring harness⁸



PRO-4X[®] INCLUDES SV EQUIPMENT PLUS:

2-speed transfer case (4WD), Electronic locking rear differential, Bilstein[®] off-road performance shocks, Traffic Sign Recognition,⁴⁰ Hill descent control, 18" Dark-finished aluminum-alloy wheels with all-terrain tires, Transfer case skid plates, Lava Red front tow hooks, LED headlights with LED signature Daytime Running Lights, LED fog lights, LED taillights with integrated LED signature, Charcoal-painted rear bumper and black overfenders, Factory-applied spray-on bedliner, Class IV tow hitch receiver with 4-pin/7-pin wiring harness,²⁴ Dual Zone Automatic Temperature Control, Rear air conditioning vents, Nissan Intelligent Key[®] with Push Button Ignition, Rain-sensing wipers, Auto-dimming rearview mirror, HomeLink[®] Universal Transceiver, Center console with 120-volt and 12-volt outlets and smartphone holder,^{16, 27} Interior mood lighting, Front overhead storage console, Lockable rear-seat cargo organizer, Front captain's chairs with 8-way power adjustable driver's seat and power lumbar, PRO-4X cloth embroidered seats with contrast stitching, Leather-wrapped steering wheel, Carpeted floor mats with PRO-4X logo, NissanConnect[®] 9" color touch-screen display,¹⁷ Nissan Door to Door Navigation with Premium Traffic,²¹ Wireless Apple CarPlay[®] integration,¹⁷ NissanConnect[®] Services powered by SiriusXM with trial access to 5-year Select, 5-year Plus, and 3-year Premium packages,¹⁷ Wi-Fi Hotspot,^{17, 53} Two rear illuminated USB-A ports¹⁶

XD PRO-4X Adds: Front and Rear Sonar System,³⁶ Power sliding back window with defroster, Utili-track[®] Channel System with two tie-down cleats,²⁶ Bed-mounted 120-volt AC power outlet,²⁷ LED under-rail bed and tailgate area lighting, Electronic tailgate lock, Rear bumper step assist, Fender[®] premium audio system with 12 speakers



BRONZE EDITION¹ (LATE AVAILABILITY) TITAN CC

- 20" Bronze aluminum-alloy wheels
- LED signature headlights and LED Daytime Running Lights
- Gloss black front grille
- Black badging
- Sport Bar
- Satin bronze metallic interior accents
- Carpeted floor mats with Bronze Edition logo



MIDNIGHT EDITION⁵² (LIMITED AVAILABILITY) TITAN CC

- 20" Black aluminum-alloy wheels
- LED signature headlights, LED Daytime Running Lights, LED fog lights
- Gloss black front grille
- Black Midnight Edition badging
- Black interior trim
- Charcoal headliner



Images may show additional available equipment.

CHOOSE YOUR PACKAGE



SV HEAVY-DUTY GAWR PKG. | TITAN XD®

High-capacity front springs



SV TOW PKG. | TITAN KC / TITAN CC

Class IV tow hitch receiver with 4-pin/7-pin wiring harness,²⁴ Power heated manually extendable tow mirrors with integrated turn signal indicators and puddle lights, Trailer brake controller,²⁴ Trailer light check,²⁴ Front tow hooks



SV CHROME PKG. | TITAN CC

Chrome front grille (inner and outer), 20" Chrome-clad aluminum-alloy wheels, Chrome exhaust finisher, Chrome exterior door handles, Metallic kick plates



PRO-4X® UTILITY PKG. | TITAN

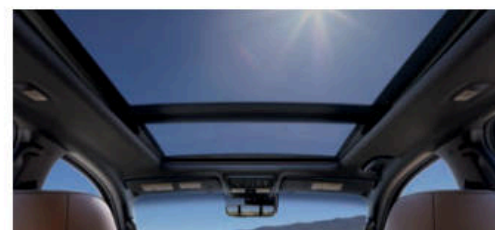
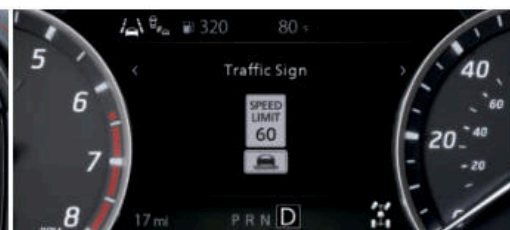
Utili-track® Channel System with two tie-down cleats,²⁶ LED under-rail bed and tailgate area lighting, Bed-mounted 120-volt AC power outlet,²⁷ Electronic tailgate lock, Front and Rear Sonar System,³⁶ Fender® premium audio system with 12 speakers, Power sliding back window with defroster, Trailer brake controller,²⁴ Rear bumper step assist



SV CONVENIENCE PKG. | TITAN CC / TITAN XD

20" Silver-painted aluminum-alloy wheels (TITAN XD only), Front and Rear Sonar System,³⁶ Integrated gooseneck hitch with 7-pin in-bed wiring harness (TITAN XD only),⁸ Dual Zone Automatic Temperature Control, Rear air conditioning vents, Nissan Intelligent Key® with Push Button Ignition, Auto-dimming rearview mirror, Front captain's chairs with 8-way power adjustable driver's seat and power lumbar, Center console with 120-volt and 12-volt outlets and smartphone holder,^{16, 27} Two rear illuminated USB-A ports, Heated front seats, Remote Engine Start System⁴¹ with Intelligent Climate Control, Leather-wrapped steering wheel, Sun visors with illuminated vanity mirrors and extensions, Front overhead storage console, Interior mood lighting, NissanConnect® Services powered by SiriusXM,¹⁷ Wi-Fi Hotspot,^{17, 53} Power sliding back window with defroster

TITAN KC: Standard



PRO-4X MOONROOF PKG. | TITAN / TITAN XD

Climate-controlled front seats (heated and cooled), Dual Panel Panoramic Moonroof

XD Adds: Intelligent Around View® Monitor,²² TITAN Boxes,²⁶ Two additional tie-down cleats²⁶



PRO-4X CONVENIENCE PKG. | TITAN / TITAN XD

Power heated black side mirrors with turn signal indicators and puddle lights, Power-folding driver's outside mirrors with reverse tilt-down feature (TITAN only), Integrated gooseneck hitch with 7-pin in-bed wiring harness (TITAN XD only),⁸ Trailer light check,²⁴ Remote Engine Start System⁴¹ with Intelligent Climate Control, PRO-4X leather-appointed seats with contrast stitching, 4-way power adjustable passenger's seat, Heated front seats, Heated outboard rear seats, Power tilt and telescoping steering column, Heated steering wheel, Memory System — driver's seat, steering wheel, and auto-dimming outside mirrors, Intelligent Around View® Monitor (TITAN only)²²



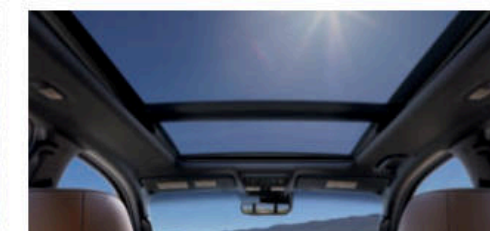
SV UTILITY PKG. | TITAN KC / TITAN CC / TITAN XD

Intelligent Auto Headlights, Utili-track® Channel System with two tie-down cleats,²⁶ Factory-applied spray-on bedliner, LED under-rail bed and tailgate area lighting, Bed-mounted 120-volt AC power outlet,²⁷ Electronic tailgate lock, Rear bumper step assist, Lockable rear-seat cargo organizer, HomeLink® Universal Transceiver, Rain-sensing wipers



PLAT. RES. UTILITY PKG. | TITAN / TITAN XD

TITAN Boxes,²⁶ Electronic tailgate lock, Rear bumper step assist, Two additional tie-down cleats²⁶



PLAT. RES. MOONROOF PKG. | TITAN / TITAN XD

Dual Panel Panoramic Moonroof



PLAT. RES. MONOTONE PAINT PKG. | TITAN / TITAN XD

Body-color front and rear bumpers, wheel arch moldings, and rocker panels

NISSAN TITAN® ACCESSORIES

Turn brand-new into all you

Every Genuine Nissan Accessory is custom-fit, custom-designed, and durability-tested. Each one is backed by Nissan's 5-year/100,000-mile (whichever occurs first) limited warranty (if installed by the dealer at the time of new vehicle purchase) and can be financed when installed by the dealer at time of new vehicle purchase.⁴² Affiliated Yakima® accessories are not warranted by Nissan. Refer to product manufacturer for warranty details. Nissan Limited Warranty does not cover damages or failures to the vehicle caused by improper installation or alterations of any Nissan approved accessory or component. Contact your dealer/retailer for details.⁴³

For more information and to shop online for TITAN® Genuine Nissan Accessories, go to bit.ly/24Titan-Accys



Nissan TITAN® Crew Cab SV 4x4 with Convenience Package shown in Gun Metallic with 20" Black Alloy Wheels w/ Center Caps, Splash Guards, Tow Hooks Kit (standard on 4x4), Hood Wind Deflector, Side-Window Deflectors, Trailer Tow Mirror Kit,²⁴ Sport Bar, NISMO® LED Off Road Lights,⁴⁴ Loop Side Steps, and Rear Bumper Step.

CHOOSE YOUR ACCESSORIES

A. Virtual Key⁴⁵

Use an app on your compatible smartphone or Apple Watch® to lock/unlock and start your TITAN. You can even share this access with up to 7 others.

B. Dual Camera Drive Recorder^{44,46}

Capture what's happening outside and inside your TITAN.

C. TITAN Illuminated Kick Plates⁴⁷

Protect and illuminate your door sill in bold TITAN style.

D. "T" Logo Approach Light

Projects a glowing TITAN logo onto the ground.

E. Sliding Bed Divider²⁶

Make work and play an orderly affair.

F. All-Season Floor Mats — High Wall Liners (4-piece set)

Muddy boots? No problem. Protect your floor from muck and moisture.

G. 4" Drop Hitch Ball Mount, Class III²⁴

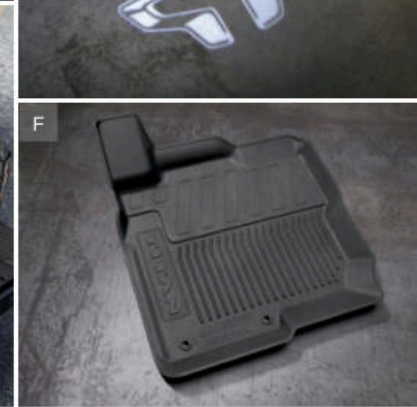
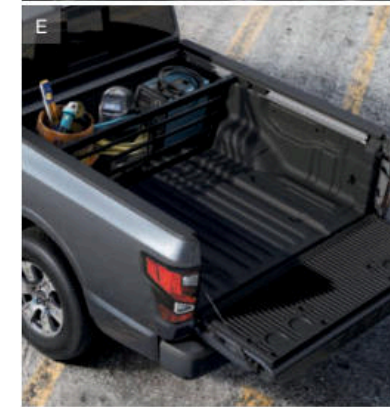
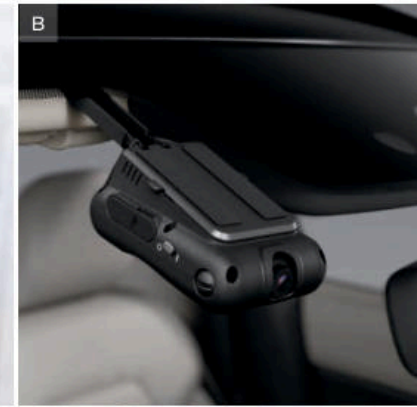
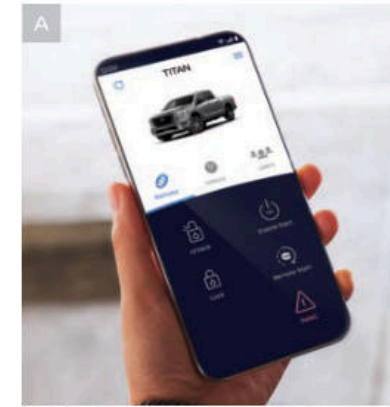
If you're getting hitched, do it right.

H. Bed Tent²⁶

It's your TITAN! It's your campsite! It's both!

Additional Accessories:

- Remote Engine Start⁴¹
- Silver Front Skid Plate Kit
- Sliding Bed Extender²⁶
- Fixed Bed Extender²⁶
- Marker Lamp Kit
- Nissan Tailgate Audio by KICKER®
- Interior Door Scuff Protection
- Lockable Rear Underseat Cargo Organizer
- Tablet Holder
- Stainless Steel Exhaust Finisher
- Running Boards w/ Chrome Accents
- Charcoal Step Rails
- 5th Wheel Adapter²⁴
- Affiliated: Yakima® RidgeBack 4 — Hitch Mount Bike Rack^{26,43}
- Wet Suit Blue Water Resistant Seat Covers
- Trash Bin
- And More



SPECIFICATIONS

	TITAN®				TITAN XD®		
	King Cab®	Crew Cab			Crew Cab		
	SV	SV	PRO-4X®	Platinum Reserve	SV	PRO-4X®	Platinum Reserve
Engine							
5.6-liter Direct Injection Gasoline (DIG) DOHC 32-valve V8 engine Horsepower — 400 hp @ 5,800 rpm ⁴ Torque — 413 lb-ft @ 4,000 rpm ⁴	■	■	■	■	■	■	■
Drivetrain							
9-speed automatic transmission	■	■	■	■	■	■	■
Switch-operated 2-speed transfer case 4WD	■	□	■	□	■	■	■
Electronic locking rear differential			■			■	
Brakes							
13.78" x 1.2" Front vented disc and 13.58" x 0.8" rear vented disc brakes	■	■	■	■			
14.17" x 1.5" Front vented disc and 14.37" x 1.2" rear vented disc brakes	■	■	■	■	■	■	■
4-wheel Anti-lock Braking System (ABS)	■	■	■	■	■	■	■
Electronic Brake force Distribution (EBD) and Brake Assist ⁴⁸	■	■	■	■	■	■	■
Suspension/Chassis Bracing/Steering							
Independent double-wishbone front suspension with stabilizer bar	■	■	■	■	■	■	■
Multi-leaf rear suspension with solid axle and stabilizer bar	■	■	■	■	■	■	■
Bilstein® off-road performance shocks			■		HD		
High-capacity front springs							
Driver Assistance Technologies							
Intelligent Cruise Control ¹⁹	■	■	■	■	■	■	■
Intelligent Forward Collision Warning ³⁵	■	■	■	■	■	■	■
Automatic Emergency Braking with Pedestrian Detection ¹¹	■	■	■	■	■	■	■
Lane Departure Warning ¹⁵	■	■	■	■	■	■	■
Blind Spot Warning ¹⁴	■	■	■	■	■	■	■
Rear Cross Traffic Alert ¹³	■	■	■	■	■	■	■
Intelligent Around View® Monitor ²²			C2	■	■	P	■
Rear Sonar System ³⁶		■	■	■	■	■	■
Front and Rear Sonar System ³⁶	■	C1	U3	■	C1	■	■
Rear Automatic Braking ¹²	■	■	■	■	■	■	■
High Beam Assist	■	■	■	■	■	■	■
Intelligent Driver Alertness ³⁷	■	■	■	■	■	■	■
Traffic Sign Recognition ⁴⁰	■	■	■	■	■	■	■
Hill start assist	■	■	■	■	■	■	■
Hill descent control	■	■	■	■	■	■	■
Active Brake Limited Slip (ABLS)	■	■	■	■	■	■	■
Trailer sway control ²⁴	■	■	■	■	■	■	■
Trailer brake controller ²⁴	T1	T1	U3	■	■	■	■
Trailer light check ²⁴	T1	T1	C2	■	■	C2	■

Wheels/Tires	King Cab®	SV	PRO-4X®	Platinum Reserve	SV	PRO-4X®	Platinum Reserve
17" Styled steel wheels					■		
18" Dark-painted machine-finished aluminum-alloy wheels	■	■				■	
18" Dark-finished aluminum-alloy wheels			■				
20" Chrome-clad aluminum-alloy wheels		CH					
20" Silver-painted aluminum-alloy wheels					C1		
20" Black aluminum-alloy wheels		ME					

TITAN Packages	King Cab®	SV	PRO-4X®	Platinum Reserve	SV	PRO-4X®	Platinum Reserve
■ Standard							
□ Optional							
C1 Part of SV Convenience Package							
T1 Part of SV Towing Package							
U2 Part of SV Utility Package							
BE Part of SV Bronze Edition Package ¹							
ME Part of SV Midnight Edition® Package ³²							
CH Part of SV Chrome Package							
U3 Part of PRO-4X Utility Package							
C2 Part of PRO-4X Convenience Package							
M1 Part of PRO-4X Moonroof Package							
U4 Part of Platinum Reserve Utility Package							
M2 Part of Platinum Reserve Moonroof Package							
MP Part of Platinum Reserve Monotone Paint Package							

TITAN XD Packages	SV	PRO-4X®	Platinum Reserve
■ Standard			
HD Part of SV Heavy-Duty GAWR Package			
C1 Part of SV Convenience Package			
U2 Part of SV Utility Package			
C2 Part of PRO-4X Convenience Package			
P Part of PRO-4X Premium Package			
U4 Part of Platinum Reserve Utility Package			
M2 Part of Platinum Reserve Moonroof Package			
MP Part of Platinum Reserve Monotone Paint Package			

Wheels/Tires (continued)	TITAN®				TITAN XD®		
	King Cab®	Crew Cab			Crew Cab		
	SV	SV	PRO-4X®	Platinum Reserve	SV	PRO-4X®	Platinum Reserve
20" Bronze aluminum-alloy wheels		BE					
20" Two-tone painted aluminum-alloy wheels				■			
20" Dark-painted machine-finished aluminum-alloy wheels							■
LT245/75R17 all-season tires					■		
P265/70R18 all-season tires	■	■					
LT275/65R18 all-terrain tires						■	
P275/70R18 all-terrain tires			■				
LT265/60R20 all-season tires					C1		■
P275/60R20 all-season tires		CH/BE/ME		■			

Exterior Features	TITAN®				TITAN XD®		
	King Cab®	Crew Cab			Crew Cab		
	SV	SV	PRO-4X®	Platinum Reserve	SV	PRO-4X®	Platinum Reserve
Removable front aero spoiler	■	■		■			■
Lower radiator skid plate	■	■	■	■	■	■	■
Oil pan, fuel tank, and transmission skid plates (4x4 models)	■	■	■	■	■	■	■
Transfer case skid plate			■			■	
Front tow hooks (4x2 models)		T1		■			■
Front tow hooks (4x4 models)	■	■	■	■	■	■	■
Intelligent Auto Headlights			■	■		■	■
LED signature headlights and LED Daytime Running Lights		BE/ME	■	■		■	■
Fog lights			■	■		■	■
Pre-wiring for off-road lighting	■	■	■	■	■	■	■
LED taillights	■	■			■		■
LED taillights with integrated signature			■	■		■	■
Body-color front bumper			■	MP		■	MP
Body-color rear bumper	■	■		MP	■		MP
Charcoal-painted rear bumper and black overfenders			■			■	
Gun Metallic-painted overfenders and rocker panels				MP			MP
Body-color overfenders and rocker panels				MP			MP
Gloss black front grille		BE/ME					
Chrome-finished grille (inner and outer)		CH					
Brushed satin-finished grille (inner and outer) and tailgate finisher		BE/ME		■			■
Black badging							
Power heated black outside mirrors	■	■	■				■
Side mirrors with convex spotter mirror							■
Power heated manually extendable tow mirrors with turn signal indicators and puddle lights	T1	T1			■	■	■
Outside mirrors with reverse tilt-down feature				C2		■	■
Power-folding driver's outside mirrors				C2		■	
Auto-dimming driver's-side outside mirrors				C2		■	
Dual Panel Panoramic Moonroof			M1	M2		P	M2
Power sliding back window with defroster	■	C1	U3	■	C1	■	■
Running boards with chrome accents				■			■
Utili-track® Channel System with two tie-down cleats ²⁶	U2	U2	U3	■	U2	■	■
Two additional tie-down cleats ²⁶				U4		P	U4
Factory-applied spray-on bedliner	U2	U2	■	■	U2	■	■
Sport Bar		BE					
TITAN Boxes ²⁶				U4		P	U4
Bed-mounted 120-volt AC power outlet ²⁷	U2	U2	U3	■	U2	■	■
LED under-rail bed and tailgate area lighting	U2	U2	U3	■	U2	■	■
Rear bumper step assist	U2	U2	U3	U4	U2	■	U4
Class IV tow hitch receiver with 4-pin/7-pin wiring harness ²⁴	T1	T1	■	■	■	■	■
Integrated gooseneck hitch ⁸					C1	C2	■
Chrome exhaust finisher		CH		■			■

Comfort/Convenience	King Cab®	SV	PRO-4X®	Platinum Reserve	SV	PRO-4X®	Platinum Reserve
Dual Zone Automatic Temperature Control	■	C1	■	■	C1	■	■
Rear air conditioning vents	■	C1	■	■	C1	■	■

SPECIFICATIONS

	TITAN®				TITAN XD®		
	King Cab®	Crew Cab			Crew Cab		
	SV	SV	PRO-4X®	Platinum Reserve	SV	PRO-4X®	Platinum Reserve
Comfort/Convenience (continued)							
Remote keyless entry with push button ignition		■			■		
Nissan Intelligent Key® with Push Button Ignition	■	C1	■	■	C1	■	■
Remote Engine Start System ⁴¹ with Intelligent Climate Control	■	C1	C2	■	C1	C2	■
Proximity Activation (LED signature headlights, cargo lights, LED bed-mounted lights)			U3	■			
Rear Door Alert ³⁹	■	■	■	■	■	■	■
Rain-sensing wipers	U2	U2	■	■	U2	■	■
Auto-dimming rearview mirror	■	C1	■	■	C1	■	■
HomeLink® Universal Transceiver	U2	U2	■	■	U2	■	■
Center console with 120-volt AC and 12-volt DC power outlets and two illuminated USB ports ^{16, 27}	■	C1	■	■	C1	■	■
Center console smartphone holder ¹⁶	■	C1	■	■	C1	■	■
Front overhead storage console	■	C1	■	■	C1	■	■
Lockable rear-seat cargo organizer	U2	U2	■	■	U2	■	■
Seating/Appointments							
40/20/40-split bench front seat with flip-down center seat with armrest		■			■		
Front captain's chairs with configurable center console	■	C1	■	■	C1	■	■
8-way power adjustable driver's seat and power lumbar support	■	C1	■	■	C1	■	■
4-way power adjustable passenger's seat			C2	■	C2	■	
Heated front seats	■	C1	C2	■	C1	C2	■
Climate-controlled front seats (heated and cooled)			M1	■		P	■
60/40-split fold-up rear bench seat	■	■	■	■	■	■	■
Heated outboard rear seats			C2	■	C2	■	
Memory System — driver's seat and steering wheel			C2	■			
Memory System — driver's seat, steering wheel, and outside mirrors				■	C2	■	
Stain-resistant cloth seat trim	■	■	■	■	■	■	■
PRO-4X cloth embroidered seats with contrast stitching			■	■			
PRO-4X leather-appointed embroidered seats with contrast stitching			C2	■			■
Premium leather-appointed seats with Platinum Reserve logos				■			
Leather-wrapped steering wheel	■	C1	■	■	C1	■	■
Heated leather-wrapped steering wheel			C2	■	C2	■	■
Satin bronze metallic interior accents		BE		■			■
Carpeted floor mats with Bronze Edition logo		BE					
Metallic kick plates with Platinum Reserve logos				■			■
Infotainment							
7" Advanced Drive-Assist® Display ²⁸	■	■	■	■	■	■	■
NissanConnect® 8" color touch-screen display ¹⁷	■	■		■	■	■	■
NissanConnect® 9" color touch-screen display ¹⁷			■	■	■	■	■
Nissan Door to Door Navigation with Premium Traffic ²¹			■	■	■	■	■
Apple CarPlay® integration ¹⁷	■	■	■	■	■	■	■
Wireless Apple CarPlay® integration ¹⁷	■	■	■	■	■	■	■
Android Auto™ compatibility ¹⁷	■	■	■	■	■	■	■
NissanConnect® Services powered by SiriusXM with trial access to 5-year Select, 5-year Plus, and 3-year Premium packages ¹⁷	■	C1	■	■	C1	■	■
Wi-Fi Hotspot ^{17, 53}	■	C1	■	■	C1	■	■
Bluetooth® Hands-free Phone System ¹⁷ and Hands-free Text Messaging Assistant ²⁰	■	■	■	■	■	■	■
Fender® premium audio system with twelve speakers, including center speaker and subwoofer			U3	■			■
SiriusXM Radio with 3-month subscription included ¹⁷	■	■	■	■	■	■	■
Safety/Security							
Nissan Air Bag System with dual-stage driver and dual-stage front-passenger supplemental air bags with seat-belt classification sensors ⁴⁹	■	■	■	■	■	■	■
Driver and front-passenger seat-mounted side-impact supplemental air bags ⁴⁹	■	■	■	■	■	■	■
Driver and front-passenger supplemental knee air bag ⁴⁹	■	■	■	■	■	■	■
Roof-mounted curtain supplemental air bags for side-impact and rollover head protection for front and rear outboard occupants with rollover sensor ⁴⁹	■	■	■	■	■	■	■
Tire Pressure Monitoring System (TPMS) with Easy-Fill Tire Alert ^{29, 50}	■	■	■	■	■	■	■

DIMENSIONS/CAPACITIES/MPG

Exterior Dimensions — Inches			
	TITAN King Cab	TITAN Crew Cab	TITAN XD Crew Cab
Wheelbase	139.8	139.8	151.6
Overall length:			
SV	228.2	228.2	243.4
PRO-4X, Platinum Reserve	—	229.5	244.4
Overall width:			
SV	79.5	79.5	79.5
PRO-4X, Platinum Reserve	—	80.7	80.7
Overall height:			
4x2: SV	—	75.4	—
4x2: Platinum Reserve	—	75.6	—
4x4: SV	75.7	76.0	78.0
4x4: PRO-4X	—	77.2	78.4
4x4: Platinum Reserve	—	77.2	78.9
Bed length	78.7	67.0	78.7
Bed width (between wheel wells)	63.8 (50.0)	63.8 (50.0)	63.8 (50.0)
Bed depth	20.8	20.8	20.8
Interior			
Head room with moonroof: front/rear	—	38.7/37.6	38.7/37.6
Head room without moonroof: front/rear	40.9/38.7	41.0/40.4	41.0/40.4
Leg room: front/rear	41.8/24.8	41.8/38.5	41.8/38.5
Hip room: front/rear	60.8/59.4	60.8/60.3	60.8/60.3
Shoulder room: front/rear	63.3/64.6	63.3/63.6	63.3/63.6
TITAN Payload and Towing — Lbs.			
Maximum payload (4x2) ²⁵	—	1,600	—
Maximum payload (4x4) ²⁵	1,710	1,650	2,360
Maximum towing (4x2) ²⁴	—	9,290	—
Maximum towing (4x4) ²⁴	9,210	9,130	10,900
Maximum towing gooseneck (4x4) ²⁴	—	—	11,050
2024 TITAN EPA Fuel Economy Estimates³¹			
City/Highway/Combined mpg			
4x2: SV	—	15/21/17	—
4x4: SV	15/21/17	15/21/17	—
4x4: PRO-4X	—	14/20/16	—
4x2: Platinum Reserve	—	15/21/17	—
4x4: Platinum Reserve	—	15/21/17	—

NISSAN ROADSIDE ASSISTANCE

Your peace of mind is on us. For five years or 100,000 miles, whichever comes first, your new Nissan is covered for the following:⁵¹

- Flat-tire changes
- Trip Interruption benefits
- Jump starts
- Vehicle lockouts
- Emergency fuel delivery

Follow Nissan on:



visit [NissanUSA.com/titan](https://www.nissanusa.com/titan)

PRINTED IN USA

¹Bronze Edition not available at time of 2024 TITAN market release date. Expected availability Winter 2023. ²Claim based on years/mileage (whichever occurs first) covered under the New Vehicle Limited Warranty basic coverage. ³Ward's in-market Large Pickup Segmentation and Small Pickup Segmentation (excluding EVs) v. 2024 TITAN. Nissan's New Vehicle Limited Warranty basic coverage excludes tires, corrosion coverage and federal and California emission performance and defect coverage. Other terms and conditions also apply. See dealer for complete warranty details. Warranty claim is current at time of publication. ⁴Ward's Segmentation (excluding EVs). 2024 TITAN vs. latest in-market Large Pickup Segment competitors. Horsepower figures based on Premium Fuel Only. Base models compared. Based on manufacturer websites. ⁵Horsepower and torque figures based on premium fuel only. ⁶Ward's Segmentation (excluding EVs). 2024 TITAN vs. latest in-market Large Pickup Segment competitors. Safety technology refers to advanced vehicle features including driver assistance systems and features. See Owner's Manual for safety information. Base models compared. Based on manufacturer websites. ⁷Maximum towing capacity when properly equipped. Maximum towing of up to 10,900 lbs. for TITAN XD® Crew Cab 4x4. Towing capacity varies by configuration. See Nissan Towing Guide and Owner's Manual for additional information. ⁸Maximum towing capacity when properly equipped. Maximum towing of up to 9,290 lbs. for TITAN® Crew Cab 4x2, 9,130 lbs. for TITAN® Crew Cab 4x4, 9,210 lbs. for TITAN® King Cab® 4x4. Towing capacity varies by configuration. See Nissan Towing Guide and Owner's Manual for additional information. ⁹Maximum Crew Cab towing capacity up to 11,050 lbs. when using available gooseneck hitch. Gooseneck hitch available on 2024 TITAN XD SV with Convenience Package or 2024 TITAN XD PRO-4X with Convenience Package or higher trims. Up to 10,900 lbs. maximum towing capacity for 2024 TITAN XD when using standard tow hitch receiver. Towing capacity varies by configuration. See Nissan Towing Guide and Owner's Manual for additional information. ¹⁰Nissan Safety Shield technologies can't prevent all collisions or warn in all situations. See Owner's Manual for important safety information. ¹¹Availability of features vary by vehicle model year, model, trim level, packaging, and options. Please see Owner's Manual for important feature information. ¹²Automatic Emergency Braking with Pedestrian Detection cannot prevent all collisions and may not provide warning or braking in all conditions. Driver should monitor traffic conditions and brake as needed to prevent collisions. See Owner's Manual for safety information. ¹³Rear Automatic Braking cannot prevent all collisions and may not provide warning or braking in all conditions. Driver should always turn and check surroundings before driving and brake as needed to prevent collisions. See Owner's Manual for safety information. ¹⁴Blind Spot Warning cannot prevent collisions and may not detect every object or warn in all situations. Driver should always turn and look before changing lanes. See Owner's Manual for safety information. ¹⁵Lane Departure Warning only operates when lane markings are able to be detected. See Owner's Manual for safety information. ¹⁶Driving is serious business and requires your full attention. If you have to use the connected device while driving, exercise extreme caution at all times so full attention may be given to vehicle operation. Smartphone or other external device not included. ¹⁷Use feature only when safe and legal. Compatible device and service required. Subject to third party service availability. For more information, see [NissanUSA.com/connect/legal](https://www.nissanusa.com/connect/legal). ¹⁸Available feature. ¹⁹Intelligent Cruise Control uses limited braking and is not a collision avoidance or warning system. Driver should monitor traffic conditions and brake as needed to prevent collisions. See Owner's Manual for safety information. ²⁰Use Hands Free Text Messaging when parked in a safe location. If you must use while driving, monitor traffic conditions and keep both hands on the steering wheel to prevent collisions. Compatible device required. Message and data rates may apply. ²¹Never program while driving. GPS mapping may not be detailed in all areas or reflect current road status. ²²Intelligent Around View® Monitor cannot eliminate blind spots and may not detect every object. Driver should always turn and check surroundings before driving. See Owner's Manual for safety information. ²³Virtual composite 360° view. ²⁴Towing varies by configuration. See Nissan Towing Guide and Owner's Manual for additional information. Always secure cargo. ²⁵Payload varies by configuration. See Nissan Towing Guide and Owner's Manual for additional information. Always secure cargo. ²⁶Cargo shown for display purposes only. Cargo and load capacity limited by weight and distribution. Always secure cargo. Heavy loading of the vehicle with cargo, especially on the roof, will affect the handling and stability of the vehicle. ²⁷120-volt power outlet is intended only for use with compatible items. Please check specifications of wattage and amperage of items to be plugged in to determine compatibility. ²⁸Information displayed is dependent on how vehicle is equipped. Driving is serious business and requires your full attention. If you have to use the feature while driving, exercise extreme caution at all times so full attention may be given to vehicle operation. ²⁹Tire Pressure Monitoring System is not a substitute for regular tire pressure checks. See Owner's Manual for safety information. ³⁰Standard on SV 4x4 models and above. ³¹2024 EPA Fuel Economy Estimates. 15 City MPG / 21 Highway MPG / 17 Combined MPG for TITAN® SV, Platinum Reserve 4x2; 15 City MPG / 21 Highway MPG / 17 Combined MPG for TITAN SV, Platinum Reserve 4x4; 14 City MPG / 20 Highway MPG / 16 Combined MPG for TITAN PRO-4X.® Actual mileage may vary with driving conditions. Use for comparison only. ³²Extra cost option. ³³Monotone paint is available and requires Monotone Paint Package. ³⁴Leather appointments. ³⁵Intelligent Forward Collision Warning cannot prevent collisions. See Owner's Manual for safety information. ³⁶Sonar System may not detect every object. Driver should always check surroundings before driving. See Owner's Manual for safety information. ³⁷Intelligent Driver Alertness cannot provide a warning in every situation. See Owner's Manual for safety information. ³⁸Vehicle Dynamic Control cannot prevent collisions due to abrupt steering, carelessness, or dangerous driving techniques. It should remain on when driving, except when freeing the vehicle from mud or snow. See Owner's Manual for safety information. ³⁹Rear Door Alert System does not detect people or cargo. Always check rear seat before exiting. See Owner's Manual for safety information. ⁴⁰Traffic Sign Recognition may not detect and read all traffic signs in all conditions. Driver should monitor all traffic signs and obey all traffic laws. See Owner's Manual for details. ⁴¹Remote Engine Start System to be used only in accordance with laws or rules in effect in your vehicle's location. ⁴²For complete information concerning warranty coverage, conditions, limitations, and exclusions, see your Nissan dealer, [parts.NissanUSA.com](https://www.nissanusa.com) and read your vehicle's Warranty Information Booklet. ⁴³All non-Nissan Genuine Accessories are not warranted by Nissan. Refer to accessory product manufacturer for warranty details. Nissan limited warranty also does not cover damages or failures to the vehicle caused by improper installation, improper alterations, or use of non-Nissan-affiliated parts/accessories. Contact your Nissan dealer or read your vehicle's Warranty Information Booklet for details. ⁴⁴Vehicle shown is for illustrative purposes only. Not representative of brochure's model year/model. ⁴⁵Compatible smartphone required. Virtual Key to be used only in accordance with laws or rules in effect in your vehicle's location. Actual maximum distance for operation will vary depending on obstructions between compatible device and vehicle. ⁴⁶Dual Camera Drive Recorder to be used only in accordance with any laws or rules in effect in your vehicle's location that may apply to audio or video recordings of drivers and passengers. ⁴⁷Only front kick plates illuminate. ⁴⁸Brake Assist cannot prevent all collisions and may not provide warning or braking in all conditions. Driver should monitor traffic conditions and brake as needed to prevent collisions. See Owner's Manual for safety information. ⁴⁹Air bags are only a supplemental restraint system. Always wear your seat belt. Rear-facing child restraints should not be placed in the front-passenger's seat. All children 12 and under should ride in the rear seat properly secured in child restraints, booster seats, or seat belts according to their size. Air bags will only inflate in certain accidents. See Owner's Manual for safety information. ⁵⁰Vehicle must be on for the Easy-Fill Tire Alert to operate. ⁵¹Roadside assistance coverage period varies by model year/model. For complete information concerning warranty coverage, conditions and exclusions, see your Nissan dealer and read the warranty information booklet for the model year/model. ⁵²2024 TITAN® SV Crew Cab Midnight Edition® has limited availability. Contact your local dealer for



Sign up to get the latest on
Nissan vehicles, news, and events.

<https://www.nissanusa.com/brochures/request-brochure.html>