



Innovation  
that excites

## 2016 VERSA<sup>®</sup> NOTE<sup>®</sup>

### WELCOME TO THE 2016 NISSAN VERSA<sup>®</sup> NOTE<sup>®</sup> DIGITAL BROCHURE

Full of images, feature stories, and all the specification and trim level information you need to help select your Versa<sup>®</sup> Note<sup>®</sup>.

[Click here](#) to sign up for news and updates on the 2016 Versa<sup>®</sup> Note<sup>®</sup>.



**MAKE** a break for it and go somewhere unique. Bring your friends along and all their gear – you've got the room. Forget the itinerary, play it by ear with directions and music you can change on-the-fly. Pit stop: Catch that show downtown. Pull in to that tight spot, cameras all around your car make parking a piece of cake.<sup>1, 2</sup> The 2016 Nissan Versa® Note®. Enjoy **SOMETHING NEW.**



Nissan Versa® Note® SR shown in Metallic Blue with accessory Chrome Door Handle Accents.

<sup>1</sup>Available feature. <sup>2</sup>Parking aid/convenience feature. Cannot completely eliminate blind spots. May not detect every object and does not warn of moving objects. Always check surroundings and turn to look behind you before moving vehicle.



## NISSAN FUEL EFFICIENCY

# INNOVATION THAT GIVES YOU MORE CAR AND MORE SAVINGS.

**40** Miles per gallon highway, so you can breeze past the pump with ease!<sup>1</sup>  
**MPG**

**4** Low rolling resistance tires that use less energy to move, so you use less fuel

**.298** Drag coefficient, thanks to an exceptionally aerodynamic design<sup>2</sup>  
**CD**

**What if** you could get excellent fuel economy<sup>1</sup> in a roomy, comfortable car that's lots of fun to drive? With Versa<sup>®</sup> Note<sup>®</sup>, you can. We got there by developing everything from exterior aerodynamics that whisper through the wind, to an advanced 1.6-liter 4-cylinder engine, to a virtually gearless Xtronic CVT<sup>®</sup> transmission that maximizes efficiency and performance. It's all part of Nissan's commitment to creating more environmentally friendly transportation for everyone.

Nissan Versa<sup>®</sup> Note<sup>®</sup> SV with Sport Value Package shown in Metallic Peacock.

<sup>1</sup>2016 EPA Fuel Economy Estimate 40 highway MPG for Versa<sup>®</sup> Note<sup>®</sup> with Xtronic CVT.<sup>®</sup> Actual mileage may vary with driving conditions — use for comparison only.  
<sup>2</sup>0.298 Cd on S Plus, SV, and SL. 0.300 Cd on SR and 0.308 Cd on S.

Click the button to see Versa<sup>®</sup> Note<sup>®</sup>'s better than ever Xtronic CVT<sup>®</sup> transmission. Or go to [bit.ly/NissanCVT](http://bit.ly/NissanCVT)





Click the button to experience a short video on Versa® Note®'s aerodynamic design. Or go to [bit.ly/versanotedesign](http://bit.ly/versanotedesign)



**What's style without substance?** Hours of testing in the wind tunnel make Versa® Note® both eye-catching and aerodynamically efficient, helping achieve up to 40 MPG highway.<sup>1</sup> A low aero-drag underbody pairs with an available active grille shutter that closes at higher speeds to help further reduce drag. Even the taillights are strategically designed, with special vents that help guide air away from the vehicle to help minimize wind turbulence. Form and function meet in sweeping character lines that make cutting through wind a breeze, with a dramatically carved profile to complete the statement. What more could you ask for?

Nissan Versa® Note® SL shown in Gun Metallic with accessory Rear Roof Spoiler and Chrome Door Handle Accents.

<sup>1</sup>2016 EPA Fuel Economy Estimate 40 highway MPG for Versa® Note® with Xtronic CVT.® Actual mileage may vary with driving conditions — use for comparison only.





**Surprisingly spacious and exceptionally accommodating, the Versa® Note® interior is the best of both worlds.** Smart design helps minimize structural interference with the cabin, giving everyone ample room to spread out. Enjoy seating for five and 38.3 inches of rear leg room for even your tallest friends. While up front, the bolstered driver's seat hugs you as you carve through the turns. Available features like a leather-wrapped steering wheel, double-stitched upholstery, and silver and chrome accents add a touch of class. Top it off with available heated front seats, and every trip will be as cozy as it is cool. Just don't be surprised when your friends ask to carpool – again.



## NISSAN DIVIDE-N-HIDE<sup>®</sup> ADJUSTABLE FLOOR INNOVATION THAT GOES WITH THE FLOW.

When living in the moment is all part of the plan, Versa<sup>®</sup> Note<sup>®</sup> has your cargo needs covered with the super-versatile available Divide-N-Hide<sup>®</sup> Adjustable Floor.<sup>1</sup> Vintage coffee table? Day's haul from the farmers' market? Get creative with multiple configurations and 18.8 cubic feet of cargo space.<sup>1</sup> Rear 60/40 split seats let you bring friends, and oversized items. Or fold down both sides to create a flat cargo area. And you can even fold down the front passenger seat to make room for long items. No matter what the plan is, Versa<sup>®</sup> Note<sup>®</sup> is ready when you are.

Click the button to watch the Divide-N-Hide<sup>®</sup> Adjustable Floor in action. Or go to [bit.ly/versanotedividenhide](http://bit.ly/versanotedividenhide)



<sup>1</sup>Cargo shown for display purposes only. Cargo and load capacity limited by weight and distribution. Always secure all cargo.



### Load it all in.

With the rear seats folded down, the available Divide-N-Hide<sup>®</sup> Adjustable Floor creates a flat cargo area.<sup>1</sup>



### Stow on the go.

Lower the floor to accommodate taller items at a moment's notice – no removal required.<sup>1</sup>



### Protect from prying eyes.

Lift up the adjustable floor and you'll find a convenient hiding place that helps keep valuables out of sight.<sup>1</sup>



Nissan Versa® Note® SR shown in Charcoal Cloth.

NissanConnect<sup>SM1</sup>

# YOUR WORLD, AT YOUR FINGERTIPS.

With NissanConnect<sup>SM1</sup> with Mobile Apps, your Versa<sup>®</sup> Note<sup>®</sup> becomes your smartphone's best friend. Which means no more separation anxiety for you. Because now, your own hand-picked music, Facebook<sup>®</sup>, latest tweets, and more all come along for the ride, working seamlessly together through your smartphone and Versa<sup>®</sup> Note<sup>®</sup>'s color touch screen.<sup>1</sup>



Your Nissan<sup>®</sup> Versa<sup>®</sup> Note<sup>®</sup> also keeps you in the loop with the available Nissan Navigation System (featuring Voice Recognition),<sup>1,2</sup> hands-free text messaging assistant,<sup>1,3</sup> Bluetooth<sup>®</sup> hands-free calling and streaming audio,<sup>1,4</sup> plus an iPod<sup>®</sup>/USB connection port.<sup>5</sup>



Click the button to learn the full story on NissanConnect<sup>SM</sup> with Mobile Apps.<sup>1</sup>  
Or go to [bit.ly/versanoteconnect](http://bit.ly/versanoteconnect)



<sup>1</sup>Driving is serious business. Only use features when safe to do so. App availability is dependent upon vehicle model, trim level, packaging, and/or options. See [NissanUSA.com/connect](http://NissanUSA.com/connect) for complete app availability details. Never program while driving. GPS mapping may not be detailed in all areas or reflect current road status. Compatible smartphone required. Cellular network and GPS signals not available in all areas and/or at all times. Technology is evolving, and changes by independent companies are not within Nissan's control. Nissan is not responsible for associated costs that may be required for continued operation due to cellular network termination (including equipment upgrades, if available, or roaming charges on alternative networks) or other third party changes. Should a third party provider terminate/restrict service, service may be terminated without notice and with no liability to Nissan and its agents or affiliates. Subscription Agreement required and terms and conditions of Subscription Agreement apply. See [NissanUSA.com/connect](http://NissanUSA.com/connect) for details. Thirty-six (36) month trial period begins on your date of vehicle purchase or lease of a new Nissan; subsequently a paid subscription is required (excluding Pandora<sup>®</sup> if Pandora app via NissanConnect is equipped on vehicle) at the then current rate to continue to receive services. Text rates and/or data usage may apply. <sup>2</sup>Never program while driving. GPS mapping may not be detailed in all areas or reflect current road status. <sup>3</sup>Use the text messaging feature after stopping your vehicle in a safe location. If you have to use the feature while driving, exercise extreme caution at all times so full attention may be given to vehicle operation. Compatible smartphone required. Text rates and/or data usage may apply. <sup>4</sup>Availability of specific features is dependent upon the phone's Bluetooth<sup>®</sup> support. Please refer to your phone Owner's Manual for details. The Bluetooth<sup>®</sup> word mark and logos are owned by Bluetooth SIG, Inc., and any use of such marks by Nissan is under license. See [NissanUSA.com/bluetooth](http://NissanUSA.com/bluetooth) for details. <sup>5</sup>Driving is serious business and requires your full attention. If you have to use the connected device while driving, exercise extreme caution at all times so full attention may be given to vehicle operation. The App Store<sup>®</sup> logo is a registered trademark of Apple, Inc. Facebook<sup>®</sup> is a registered trademark of Facebook, Inc. Google<sup>®</sup> and Google Play<sup>®</sup> are registered trademarks of Google Inc. iHeartRadio<sup>™</sup> is a trademark of iHeart Media. Pandora<sup>®</sup> is a registered trademark of Pandora Media. Twitter<sup>®</sup> is a registered trademark of Twitter, Inc.



## NISSAN AROUND VIEW<sup>®</sup> MONITOR IT'S GOT YOUR BACK. AND THE REST OF YOU, TOO.

Parallel parking just got easier. A rearview monitor camera is great when backing up – but when it comes to parking, it's nice to see more than just what's directly behind you. That's why Versa<sup>®</sup> Note<sup>®</sup> offers an available Around View<sup>®</sup> Monitor.<sup>1</sup> Four cameras give you a virtual composite 360° bird's-eye view of your vehicle, with selectable split-screen close-ups of the front, rear, and curbside views, so you can get a better look.<sup>2</sup>

Click the button for a short video on Versa<sup>®</sup> Note<sup>®</sup>'s Around View<sup>®</sup> Monitor.<sup>1</sup>  
Or go to [bit.ly/versanoteAVM](http://bit.ly/versanoteAVM)



### RIGHT ON THE NOSE

In Drive, the display gives you both a front and overhead view, so you know just how far to pull up – without going too far.

### COMPLETE THE PICTURE

Located under your driver's side mirror, this camera helps round out your virtual 360° bird's-eye view, whether you're in Drive or Reverse.<sup>2</sup>



### SPARE YOUR WHEELS

In Drive or Reverse, you can push the camera button to switch out the overhead for a side view. A great help for seeing how close you are to the curb.

### BACKGROUND SAVVY

In Reverse, the display helps you see what's directly behind you, while the overhead view helps with shorter objects otherwise hidden below your window.

<sup>1</sup>Parking aid/convenience feature. Cannot completely eliminate blind spots. May not detect every object and does not warn of moving objects. Always check surroundings and turn to look behind you before moving vehicle.  
<sup>2</sup>Virtual composite 360° view.

## NISSAN SAFETY SHIELD® PHILOSOPHY

# INNOVATION THAT LOOKS OUT FOR YOU.

Wouldn't it be cool if you had the confidence you need for every part of your drive? The Nissan Safety Shield® philosophy is a comprehensive approach to safety that guides the engineering and development of every vehicle we make.

### MONITOR

Smart technologies help monitor conditions. Like a rearview camera that helps you see something directly behind you, or a system that helps ensure you're rolling on properly inflated tires.

#### Tire Pressure Monitoring System with Available Easy-Fill Tire Alert<sup>1,2</sup>

Lets you know when a tire is low. And Easy-Fill Tire Alert takes the guesswork out of filling your tires, with a beep of the horn when you've reached the correct pressure.

#### Available Around View® Monitor<sup>3</sup>

#### Available RearView Monitor<sup>3</sup>

### RESPOND

Whether you need to hit the brakes hard or maneuver around an unexpected obstacle, these standard technologies help you respond to a potentially harmful situation.

#### Vehicle Dynamic Control helps you maintain your steered path.<sup>4</sup>

**Traction Control System** helps reduce wheelspin in low-traction situations.

**Anti-lock Braking System** helps you maintain steering control around obstacles while braking heavily.

**Electronic Brake force Distribution** sends extra force to the rear brakes when you have additional weight of passengers or cargo in the back.

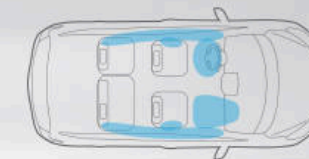
**Brake Assist** helps apply maximum braking force if it detects hard braking and senses you are in an emergency situation.<sup>5</sup>

### PROTECT

When a collision is unavoidable, Nissan's Zone Body Construction helps absorb the impact while the advanced seat belt and air bag systems help protect passengers.

#### Six Standard Air Bags<sup>6</sup>

#### LATCH System (Lower Anchors and Tethers for Children)



**6 Standard Air Bags<sup>6</sup>** Nissan Advanced Air Bag System has dual-stage supplemental front air bags with seat belt and occupant-classification sensors.<sup>6</sup> In addition, Versa® Note® features front seat-mounted side-impact supplemental air bags,<sup>6</sup> and roof-mounted curtain side-impact supplemental air bags.<sup>6</sup>



**Available Around View® Monitor<sup>3</sup>** Lets you get the big picture with four cameras to help you maneuver with more confidence.



**snug kids.** Nissan safety engineers have dedicated thousands of hours to evaluating hundreds of child restraints in Nissans. The result: an industry first, The Snug Kids® Child Safety Seat Fit Guide. This guide lists child seats that fit the rear seats of Nissan vehicles, as well as offers invaluable tips on correct installation. Look for the latest Fit Guide at [NissanUSA.com/SnugKids](http://NissanUSA.com/SnugKids)

<sup>1</sup>TPMS is not a substitute for regular tire pressure checks. <sup>2</sup>Vehicle must be on for the Easy-Fill Tire Alert to operate. <sup>3</sup>Parking aid/convenience feature. Cannot completely eliminate blind spots. May not detect every object and does not warn of moving objects. Always check surroundings and turn to look behind you before moving vehicle. <sup>4</sup>VDC, which should remain on when driving except when freeing the vehicle from mud or snow, cannot prevent accidents due to abrupt steering, carelessness, or dangerous driving techniques. <sup>5</sup>Brake Assist is only an aid to assist the driver and is not a collision warning or avoidance device. It is the driver's responsibility to be in control of the vehicle at all times. <sup>6</sup>Air bags are only a supplemental restraint system; always wear your seat belt. Even with the occupant-classification sensor, rear-facing child restraints should not be placed in the front-passenger's seat. All children 12 and under should ride in the rear seat properly secured in child restraints, booster seats, or seat belts according to their size. Air bags will only inflate in certain accidents; see your Owner's Manual for more details. Inflated air bags shown for illustration purposes only, actual coverage area may differ. Air bags deflate after deployment.



## TURN BRAND-NEW INTO ALL YOU.

Every Genuine Nissan Accessory is custom-fit, custom-designed and durability-tested. Each one is backed by Nissan's 3-year/36,000-mile (whichever occurs first) limited warranty (if installed by dealer at the time of purchase),<sup>1</sup> and can be financed when installed by dealer at time of purchase.

**A. Interior Accent Lighting**  
Bring a bit of the club along for the drive.

**B. Rear Roof Spoiler**  
Go ahead, spoil yourself.

**C. Illuminated Kick Plates**  
Let your door sills play dress up.

**D. 15" Aluminum-alloy Wheels**  
Attitude comes standard.

**E. Chrome Exhaust Finisher**  
Finish with a sleek touch.

**F. Rear Bumper Protector**  
Keeps you from getting nasty scrapes.

**G. All-season Floor Mats<sup>2</sup>**  
Bring on the weather.

**H. Rear Cargo Cover<sup>2</sup> and Carpeted Cargo Mat**  
Think of it as a secret fortress for your cargo.

### Additional Accessories:

- Chrome Rear Hatch Accent
- Interior Trim Appliqués
- Divide-N-Hide<sup>®</sup> Adjustable Floor
- Carpeted Floor Mats
- And More

<sup>1</sup>Genuine Nissan Accessories are covered by Nissan's Limited Warranty on Genuine Nissan Replacement Parts, Genuine NISMO<sup>®</sup> S-Tune Parts, and Genuine Nissan Accessories for the longer of 12 months/12,000 miles (whichever occurs first) or the remaining period under the 3-year/36,000-mile (whichever occurs first) Nissan New Vehicle Limited Warranty. Terms and conditions apply. See Warranty Information Booklet for details. <sup>2</sup>Cargo and load capacity limited by weight and distribution. Always secure all cargo.

Click the button to see short videos on Versa<sup>®</sup> Note<sup>®</sup> accessories. Or go to [bit.ly/versanoteaccessories](http://bit.ly/versanoteaccessories)



# GENUINE NISSAN ACCESSORIES.

For more information and to shop online for Versa<sup>®</sup> Note<sup>®</sup> Genuine Nissan Accessories, go to [bit.ly/16versanote-estore](http://bit.ly/16versanote-estore)



Nissan Versa<sup>®</sup> Note<sup>®</sup> SL shown in Metallic Peacock with 16" Sporty Aluminum-alloy Wheels, Rear Roof Spoiler, Splash Guards, Chrome Door Handle Accents and Fog Lights (standard on SR and SL trims).

## CHOOSE YOUR TRIM LEVEL

### S

- 1.6-liter 4-cylinder engine
- 5-speed manual transmission
- 15" x 5.5" steel wheels with wheel covers
- P185/65HR15 all-season low rolling resistance tires
- Dual power outside mirrors
- Bluetooth® Hands-free Phone System<sup>1</sup>
- Air conditioning
- Fine Vision electroluminescent gauges
- Cup holders in center console
- Sun visors with extensions
- 60/40 Split fold-down rear seats
- AM/FM/CD audio system with auxiliary audio input jack<sup>2</sup>
- MP3/WMA CD playback capability
- Illuminated steering wheel-mounted audio controls
- 4-wheel Anti-lock Braking System (ABS)
- Vehicle Dynamic Control (VDC) with Traction Control System (TCS)
- Nissan Advanced Air Bag System



### S PLUS

#### INCLUDES S EQUIPMENT PLUS:

- Up to 40 MPG highway<sup>3</sup>
- Xtronic CVT® (Continuously Variable Transmission)
- Active grille shutter



### SV

#### INCLUDES S PLUS EQUIPMENT PLUS:

- NissanConnect<sup>SM</sup> with Mobile Apps<sup>4</sup>
- Premium AM/FM/CD audio system with 5.0" color display
- RearView Monitor
- Hands-free text messaging assistant<sup>5</sup>
- Streaming audio via Bluetooth® wireless technology<sup>1</sup>
- SiriusXM® Satellite Radio<sup>6</sup>
- Upgraded Fine Vision electroluminescent gauges with trip computer and outside temperature display
- Integrated Key with remote keyless entry
- Power windows and door locks
- Cruise control
- USB connection port for iPod® interface and other compatible devices<sup>2</sup>
- Divide-N-Hide® Adjustable Floor
- Sun visors with vanity mirrors and extensions
- 6-way manual driver's seat with armrest and upgraded cloth seat and door trim
- Leather-wrapped steering wheel
- Piano Black trim and silver accents on shift knob and shift surround
- Chrome inside door handles and chrome-accented center vents



#### KEY AVAILABLE PACKAGE:

- Appearance Package

### SR

#### INCLUDES SV EQUIPMENT PLUS:

- 16" x 6.0" 5-split spoke aluminum-alloy wheels
- P195/55HR16 all-season low rolling resistance tires
- Sport grille and smoked headlights
- Sport front and rear fascias with side sills
- Fog lights
- Dual power outside mirrors with LED turn signal indicators
- Rear roof spoiler
- Suede-like seat fabric with color accents and stitching
- Leather-wrapped sport steering wheel
- Variable intermittent flat-blade windshield wipers
- Rear-seat fold-down center armrest with cup holders



#### KEY AVAILABLE PACKAGE:

- Technology Package

### SL

#### INCLUDES SV EQUIPMENT PLUS:

- 16" x 6.0" aluminum-alloy wheels
- P195/55HR16 all-season low rolling resistance tires
- NissanConnect<sup>SM</sup> with Mobile Apps<sup>4</sup>
- Nissan Navigation System with 5.8" color touch-screen monitor<sup>7</sup>
- Voice Recognition for audio and navigation
- SiriusXM® Traffic and Travel Link<sup>6</sup>
- Around View® Monitor
- Nissan Intelligent Key® with Push Button Ignition
- Heated front seats
- Fog lights
- Dual power heated outside mirrors with LED turn signal indicators
- Variable intermittent flat-blade windshield wipers
- Rear seat fold-down center armrest with cup holders
- Tire Pressure Monitoring System (TPMS) with Easy-Fill Tire Alert

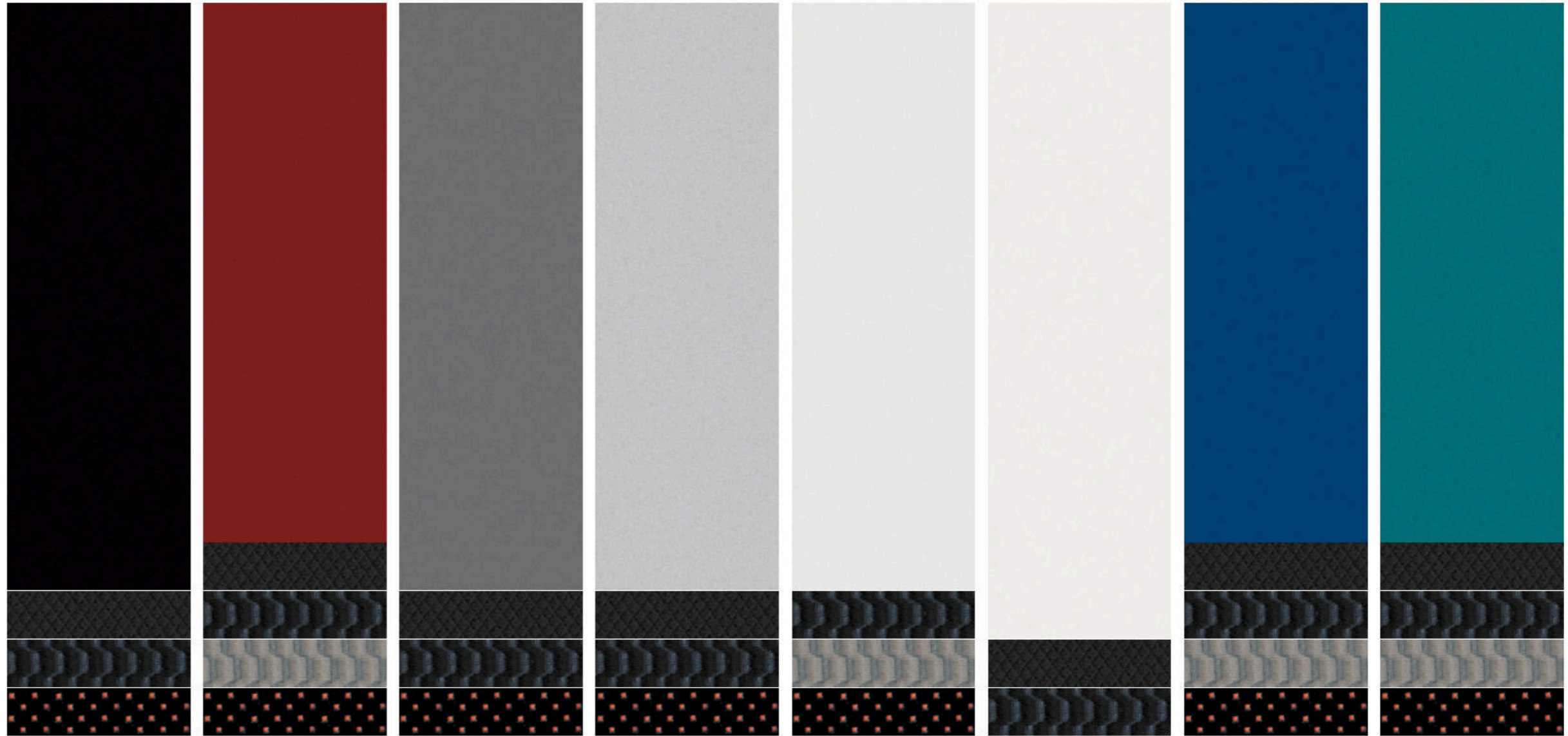


Images may show additional available equipment. <sup>1</sup>Availability of specific features is dependent upon the phone's Bluetooth® support. Please refer to your phone Owner's Manual for details. Bluetooth® word mark and logos are owned by Bluetooth SIG, Inc., and any use of such marks by Nissan is under license. See [NissanUSA.com/bluetooth](http://NissanUSA.com/bluetooth) for details. <sup>2</sup>Driving is serious business and requires your full attention. If you have to use the connected device while driving, exercise extreme caution at all times so full attention may be given to vehicle operation. iPod® is a registered trademark of Apple, Inc. All rights reserved. iPod® or other external device not included. <sup>3</sup>2016 EPA Fuel Economy Estimate 40 highway MPG for Versa® Note® with Xtronic CVT. <sup>4</sup>Actual mileage may vary with driving conditions — use for comparison only. <sup>5</sup>Driving is serious business. Only use features when safe to do so. App availability is dependent upon vehicle model, trim level, packaging, and/or options. See [NissanUSA.com/connect](http://NissanUSA.com/connect) for complete app availability details. Never program while driving. GPS mapping may not be detailed in all areas or reflect current road status. Compatible smartphone required. Cellular network and GPS signals not available in all areas and/or at all times. Technology is evolving, and changes by independent companies are not within Nissan's control. Nissan is not responsible for associated costs that may be required for continued operation due to cellular network termination (including equipment upgrades, if available, or roaming charges on alternative networks) or other third party changes. Should a third party provider terminate/restrict service, service may be terminated without notice and with no liability to Nissan and its agents or affiliates. Subscription Agreement required and terms and conditions of Subscription Agreement apply. See [NissanUSA.com/connect](http://NissanUSA.com/connect) for details. Thirty-six (36) month trial period begins on your date of vehicle purchase or lease of a new Nissan; subsequently a paid subscription is required (excluding Pandora,® if Pandora app via NissanConnect is equipped on vehicle) at the then current rate to continue to receive services. Text rates and/or data usage may apply. <sup>6</sup>Use the text messaging feature after stopping your vehicle in a safe location. If you have to use the feature while driving, exercise extreme caution at all times so full attention may be given to vehicle operation. Compatible smartphone required. Text rates and/or data usage may apply. <sup>7</sup>Required monthly subscriptions sold separately for each available SiriusXM feature after trial period, and are continuous until you call SiriusXM to cancel. Installation costs, one-time activation fee, other fees and taxes will apply. Each SiriusXM feature availability is dependent upon vehicle model, trim level, packaging, and/or options, and may only be available in select markets. Satellite Radio U.S. service, NavWeather® service, and SiriusXM Travel Link® services (if any of the foregoing features are equipped on vehicle) available only to those 18 or older in the 48 contiguous states and D.C. Fees and programming subject to change. Subscriptions governed by Customer Agreement available at [siriusxm.com](http://siriusxm.com). <sup>8</sup>Never program while driving. GPS mapping may not be detailed in all areas or reflect current road status. ©2015 Sirius XM Radio Inc. Sirius,® XM® and all related marks and logos are trademarks of Sirius XM Radio Inc. iPod® is a registered trademark of Apple, Inc. All rights reserved. iPod® or other external device not included.

# CHOOSE YOUR COLOR



You've decided which Versa® Note® you want, now here comes the best part: deciding what it's going to look like. Choose your favorite color and then pick from the available interiors based on the model of your choice.



■ Standard

Nissan has taken care to ensure that the color swatches presented here are the closest possible representations of actual vehicle colors. Swatches may vary slightly due to viewing light or screen quality. Please see the actual colors at your local Nissan dealer.

Super Black KH3

Cayenne Red NAH

Gun Metallic KAD

Brilliant Silver K23

Aspen White<sup>1</sup> QAC

Fresh Powder QM1

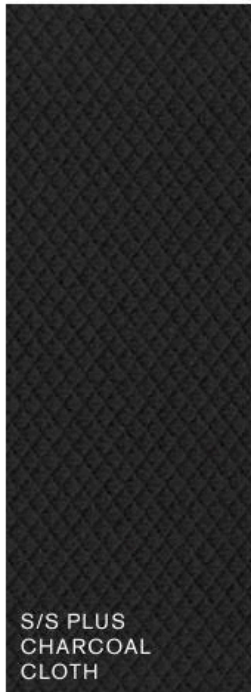
Metallic Blue B17

Metallic Peacock FAK

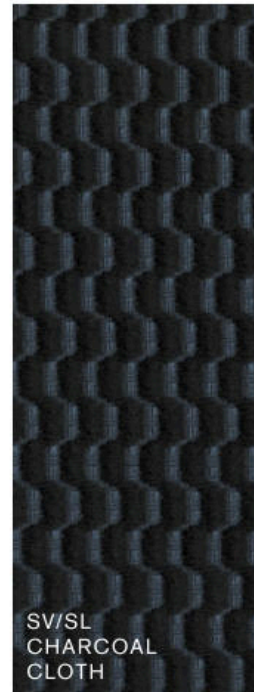
	S					S					S					S					S					S					S					S									
	S	PLUS	SV	SR	SL	S	PLUS	SV	SR	SL	S	PLUS	SV	SR	SL	S	PLUS	SV	SR	SL	S	PLUS	SV	SR	SL	S	PLUS	SV	SR	SL	S	PLUS	SV	SR	SL	S	PLUS	SV	SR	SL					
CHARCOAL CLOTH	■	■	■	■	■	■	■	■	■	■	■	■	■	■	■	■	■	■	■	■	■	■	■	■	■	■	■	■	■	■	■	■	■	■	■	■	■	■	■	■	■	■	■	■	■
WHEAT STONE CLOTH																																													

<sup>1</sup>Extra cost option.

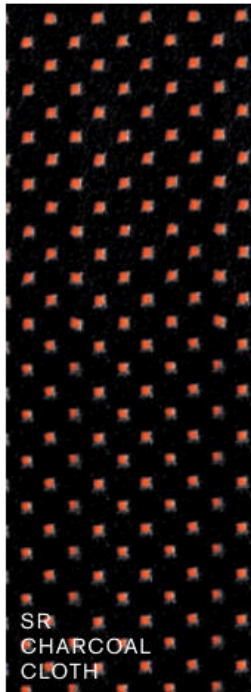
CHOOSE YOUR FABRIC



S/S PLUS  
CHARCOAL  
CLOTH



SV/SL  
CHARCOAL  
CLOTH



SR  
CHARCOAL  
CLOTH



SV/SL  
WHEAT STONE  
CLOTH



SPECIFICATIONS

Engine	S	S Plus	SV	SR	SL
HR16DE – 1.6-liter DOHC 16-valve 4-cylinder engine	■	■	■	■	■
— Horsepower – 109 hp @ 6,000 rpm					
— Torque – 107 lb-ft @ 4,400 rpm					
Emissions – Tier 2-Bin 5 (EPA); LEV2-ULEV (CARB)	■	■	■	■	■
Dual injector system	■	■	■	■	■
Continuously Variable Valve Timing Control System (CVTCS) on intake and exhaust valves	■	■	■	■	■
Nissan Direct Ignition System	■	■	■	■	■
Platinum-tipped spark plugs	■	■	■	■	■
Electronic drive-by-wire throttle	■	■	■	■	■

Drivetrain	S	S Plus	SV	SR	SL
Front engine/Front-Wheel Drive	■	■	■	■	■
5-speed manual transmission	■				
Xtronic CVT® (Continuously Variable Transmission)		■	■	■	■

Brakes	S	S Plus	SV	SR	SL
Vented front disc/rear drum brakes	■	■	■	■	■
4-wheel Anti-lock Braking System (ABS)	■	■	■	■	■
Electronic Brake force Distribution (EBD)	■	■	■	■	■
Brake Assist	■	■	■	■	■

Suspension/Steering	S	S Plus	SV	SR	SL
Independent strut front suspension with stabilizer bar	■	■	■	■	■
Torsion beam rear axle with integrated stabilizer bar	■	■	■	■	■
Vehicle-speed-sensitive electric power steering	■	■	■	■	■

Wheels/Tires	S	S Plus	SV	SR	SL
15" x 5.5" Steel wheels with wheel covers	■	■	■		
15" x 5.5" 5-split spoke aluminum-alloy wheels			■	■	
16" x 6.0" 5-split spoke aluminum-alloy wheels				■	
16" x 6.0" aluminum-alloy wheels					■
16" x 6.0" sporty aluminum-alloy wheels					■
P185/65HR15 all-season low rolling resistance tires	■	■	■		
P195/55HR16 all-season low rolling resistance tires				■	■

■ Standard    ■ Accessory    ■ Part of Fog Lights Package    ■ Part of Sport Value Package    ■ Part of Interior Illumination Package  
 □ Optional    ■ Part of SR Tech Package    ■ Part of Chrome Package    ■ Part of SV Appearance Package

Exterior Features	S	S Plus	SV	SR	SL
Multi-reflector halogen headlights	■	■	■	■	■
Sport grille and smoked headlights				■	
Aerodynamic taillights	■	■	■	■	■
Sport front and rear fascias with side sills				■	
Fog lights			■	■	■
Dual power outside mirrors	■	■	■		■
Dual power outside mirrors with LED turn signal indicators				■	
Dual power heated outside mirrors				■	■
Active grille shutter		■	■	■	■
Rear roof spoiler	■	■	■	■	■
Splash guards	■	■	■		■
Rear bumper protector	■	■	■		■
Stainless steel exhaust finisher	■	■	■	■	■
Chrome rear hatch accent	■	■	■	■	■
Chrome door handle accents	■	■	■	■	■

Comfort/Convenience	S	S Plus	SV	SR	SL
Nissan Navigation System with 5.8" color touch-screen monitor				■	■
Voice Recognition for audio and navigation				■	■
SiriusXM® Traffic and Travel Link® <sup>1</sup>				■	■
NissanConnect <sup>SM</sup> with Mobile Apps <sup>2</sup>			■	■	■
Hands-free text messaging assistant <sup>3</sup>			■	■	■
RearView Monitor			■	■	■
Around View® Monitor			■	■	■
Bluetooth® Hands-free Phone System <sup>4</sup>	■	■	■	■	■
Fine Vision electroluminescent gauges with trip computer	■	■			
Upgraded Fine Vision electroluminescent gauges with trip computer and outside temperature display			■	■	■
Air conditioning	■	■	■	■	■
Integrated Key with remote keyless entry			■	■	■
Nissan Intelligent Key® with Push Button Ignition				■	■
Power door locks with auto-locking feature			■	■	■
Power windows with driver's one-touch auto-down feature			■	■	■
Tilt steering column	■	■	■	■	■

■ Part of Sport Value Package    ■ Part of Interior Illumination Package

Comfort/Convenience (continued)	S	S Plus	SV	SR	SL
Cruise control			■	■	■
Variable intermittent flat-blade windshield wipers			■	■	■
Intermittent rear window wiper	■	■	■	■	■
Rear window defroster	■	■	■	■	■
Front map light	■	■	■	■	■
Cargo area light	■	■	■	■	■
Front door map pockets with bottle holders	■	■	■	■	■
Front cup holders in center console	■	■	■	■	■
Rear cup holders in center console	■	■	■	■	■
Rear cup holders in rear-seat center armrest				■	■
Front passenger seat map pocket	■	■	■	■	■
Divide-N-Hide® Adjustable Floor			■	■	■
Rear cargo cover	■	■	■	■	■
Sun visors with extensions	■	■			
Sun visors with vanity mirrors and extensions			■	■	■
Auto-dimming inside rearview mirror with HomeLink®				■	■
Universal Transceiver and digital compass	■	■	■	■	■
Digital clock	■	■	■	■	■
Auxiliary 12-volt DC power outlet	■	■	■	■	■
Battery saver	■	■	■	■	■

Seating/Appointments	S	S Plus	SV	SR	SL
4-way manual driver's seat	■	■			
6-way manual driver's seat			■	■	■
Driver's seat armrest			■	■	■
Heated front seats					■
60/40 Split fold-down rear seats	■	■	■	■	■
Cloth seat trim	■	■			
Upgraded cloth seat trim			■		■
Suede-like seat fabric with color accents and stitching				■	
Carpeted floor mats	■	■	■	■	■
Carpeted cargo mat	■	■	■	■	■
Cloth door trim accent			■	■	■
Interior trim appliqué			■	■	■

<sup>1</sup>Required monthly subscriptions sold separately for each available SiriusXM feature after trial period, and are continuous until you call SiriusXM to cancel. Installation costs, one-time activation fee, other fees and taxes will apply. Each SiriusXM feature availability is dependent upon vehicle model, trim level, packaging, and/or options, and may only be available in select markets. Satellite Radio U.S. service, NavWeather® service, and SiriusXM Travel Link® services (if any of the foregoing features are equipped on vehicle) available only to those 18 or older in the 48 contiguous states and D.C. Fees and programming subject to change. Subscriptions governed by Customer Agreement available at [siriusxm.com](http://siriusxm.com). ©2015 Sirius XM Radio Inc. Sirius, XM® and all related marks and logos are trademarks of Sirius XM Radio Inc. <sup>2</sup>Driving is serious business. Only use features when safe to do so. App availability is dependent upon vehicle model, trim level, packaging, and/or options. See [NissanUSA.com/connect](http://NissanUSA.com/connect) for complete app availability details. Never program while driving. GPS mapping may not be detailed in all areas or reflect current road status. Cellular network and GPS signals not available in all areas and/or at all times. Technology is evolving, and changes by independent companies are not within Nissan's control. Nissan is not responsible for associated costs that may be required for continued operation due to cellular network termination (including equipment upgrades, if available, or roaming charges on alternative networks) or other third party changes. Should a third party provider terminate/restrict service, service may be terminated without notice and with no liability to Nissan and its agents or affiliates. Subscription Agreement required and terms and conditions of Subscription Agreement apply. See [NissanUSA.com/connect](http://NissanUSA.com/connect) for details. Thirty-six (36) month trial period begins on your date of vehicle purchase or lease of a new Nissan; subsequently a paid subscription is required (excluding Pandora,® if Pandora app via NissanConnect is equipped on vehicle) at the then current rate to continue to receive services. Text rates and/or data usage may apply. <sup>3</sup>Use the text messaging feature after stopping your vehicle in a safe location. If you have to use the feature while driving, exercise extreme caution at all times so full attention may be given to vehicle operation. Compatible smartphone required. Text rates and/or data usage may apply. <sup>4</sup>Availability of specific features is dependent upon the phone's Bluetooth® support. Please refer to your phone Owner's Manual for details. Bluetooth® word mark and logos are owned by Bluetooth SIG, Inc., and any use of such marks by Nissan is under license. See [NissanUSA.com/bluetooth](http://NissanUSA.com/bluetooth) for details. Google® is a registered trademark of Google Inc. HomeLink® is a registered trademark of Gentex Corporation. iPod® is a registered trademark of Apple, Inc. All rights reserved. iPod® or other external device not included.

SPECIFICATIONS (CONTINUED)

Seating/Appointments (continued)	S	S Plus	SV	SR	SL
Leather-wrapped steering wheel			■		■
Leather-wrapped sport steering wheel				■	
Piano black trim			■	■	■
Silver accents on dash and vent rings	■	■	■	■	■
Silver accents on shift knob and shifter surround			■	■	■
Chrome inside door handles, chrome-accented center vents			■	■	■
Printed non-woven fabric headliner			■	■	■
Illuminated kick plates	■	■	■	■	■
Interior accent lighting	■	■	■	■	■

Audio/Entertainment	S	S Plus	SV	SR	SL
AM/FM/CD audio system	■	■			
Upgraded AM/FM/CD audio system with 5.0" color display			■	■	
Premium AM/FM/CD audio system with 5.8" color touch-screen monitor				■	■
Four speakers	■	■	■	■	■
SiriusXM® Satellite Radio <sup>1</sup>			■	■	■
Streaming audio via Bluetooth® wireless technology <sup>2</sup>			■	■	■
MP3/WMA CD playback capability	■	■	■	■	■
Auxiliary audio input jack	■	■	■	■	■
USB connection port for iPod® interface and other compatible devices <sup>3</sup>			■	■	■
Radio Data System (RDS)	■	■	■	■	■
Speed-sensitive volume control	■	■	■	■	■
Illuminated steering wheel-mounted audio controls	■	■	■	■	■

Safety/Security	S	S Plus	SV	SR	SL
Nissan Advanced Air Bag System with dual-stage supplemental front air bags with seat-belt and occupant-classification sensors	■	■	■	■	■
Driver and front-passenger seat-mounted side-impact supplemental air bags	■	■	■	■	■
Roof-mounted curtain side-impact supplemental air bags for front- and rear-seat outboard occupant head protection	■	■	■	■	■
Vehicle Dynamic Control (VDC) with Traction Control System (TCS)	■	■	■	■	■

Safety/Security (continued)	S	S Plus	SV	SR	SL
3-point ALR/ELR passenger seat belt system (ELR for driver)	■	■	■	■	■
Height-adjustable front head restraints	■	■	■	■	■
Rear outboard head restraints	■	■	■	■	■
LATCH System (Lower Anchors and Tethers for CHildren)	■	■	■	■	■
Zone Body construction with front and rear crumple zones	■	■	■	■	■
Hood buckling creases and safety stops	■	■	■	■	■
Energy-absorbing steering column	■	■	■	■	■
Pipe-style steel side-door guard beams	■	■	■	■	■
Tire Pressure Monitoring System (TPMS)	■	■	■	■	■
Tire Pressure Monitoring System (TPMS) with Easy-Fill Tire Alert					■
Nissan Vehicle Immobilizer System					■

PACKAGES

A SV Appearance Package
15" x 5.5" 6-split spoke aluminum-alloy wheels
Fog lights
Variable intermittent flat-blade windshield wipers

T SR Tech Package
Nissan Navigation System with 5.8" color touch-screen monitor for audio and navigation
Voice Recognition
SiriusXM® Traffic and Travel Link® <sup>1</sup>

F SV Fog Lights Package
Fog lights
Variable intermittent flat-blade windshield wipers

ACCESSORY PACKAGES

CH Chrome Package
Stainless steel exhaust finisher
Chrome rear hatch accent
Chrome door handle accents

T Sport Value Package
15" x 5.5" 5-split spoke aluminum-alloy wheels
Rear roof spoiler

■ Interior Illumination Package
Illuminated kick plates
Interior accent lighting

<sup>1</sup>Required monthly subscriptions sold separately for each available SiriusXM feature after trial period, and are continuous until you call SiriusXM to cancel. Installation costs, one-time activation fee, other fees and taxes will apply. Each SiriusXM feature availability is dependent upon vehicle model, trim level, packaging, and/or options, and may only be available in select markets. Satellite Radio U.S. service, NavWeather® service, and SiriusXM Travel Link® services (if any of the foregoing features are equipped on vehicle) available only to those 18 or older in the 48 contiguous states and D.C. Fees and programming subject to change. Subscriptions governed by Customer Agreement available at [siriusxm.com](http://siriusxm.com). ©2015 Sirius XM Radio Inc. Sirius, XM and all related marks and logos are trademarks of Sirius XM Radio Inc. <sup>2</sup>Availability of specific features is dependent upon the phone's Bluetooth® support. Please refer to your phone Owner's Manual for details. Bluetooth® word mark and logos are owned by Bluetooth SIG, Inc., and any use of such marks by Nissan is under license. See [NissanUSA.com/bluetooth](http://NissanUSA.com/bluetooth) for details. <sup>3</sup>Use the text messaging feature after stopping your vehicle in a safe location. If you have to use the feature while driving, exercise extreme caution at all times so full attention may be given to vehicle operation. Compatible smartphone required. Standard text rates and/or data usage may apply. Google® is a registered trademark of Google Inc. iPod® is a registered trademark of Apple, Inc. All rights reserved. iPod® or other external device not included.

## DIMENSIONS/CAPACITIES/WEIGHTS/MPG

### Dimensions – Inches

Exterior	
Wheelbase	102.4
Overall length	163.7
Overall width	66.7
Overall height	60.5
Track width (front/rear)	58.3/58.5

Aerodynamics - Cd	S	S Plus	SV	SR	SL
Drag coefficient	0.308	0.298	0.298	0.300	0.298

Interior (front/rear)			
Head room	40.8/38.0	Hip room	48.5/48.8
Leg room	41.3/38.3	Shoulder room	51.7/51.9

### Capacities

Seating capacity	5
Interior passenger volume (cu. ft.)	94.1
Cargo volume with rear seats up (cu. ft.)	18.8
Cargo volume with rear seats down (cu. ft.)	38.3
Fuel tank (gals.)	10.8

### Curb Weights – Lbs.

	S	S Plus	SV	SR	SL
Manual transmission	2,414	–	–	–	–
Xtronic CVT®	–	2,460	2,485	2,523	2,521

### 2016 EPA Fuel Economy Estimates

	S	S Plus	SV	SR	SL
Manual transmission	27/30/36	–	–	–	–
Xtronic CVT®	–	31/35/40	31/35/40	31/35/40	31/35/40

Actual mileage may vary with driving conditions – use for comparison only.

## BUYING/OWNING



**Nissan Motor Acceptance Corporation.** Whether you're buying or leasing, you'll find attractive rates and flexible terms to make your purchase more accessible.

**College Grad Program.** Ask about our special new vehicle pricing available to individuals up to two years after graduation.

**Active and Reserve US Military Program.** Ask about eligibility for our fixed discount on new vehicle pricing available to those serving our country.

**New Vehicle Limited Warranties.** Protection for your new Nissan includes 3-year/36,000-mile (whichever occurs first) basic coverage and 5-year/60,000-mile (whichever occurs first) powertrain coverage. Terms, conditions and exclusions apply. See Warranty Information Booklet for complete details.

**Security+Plus.\*** For additional peace of mind, a variety of extended service plans lets you tailor the coverage to your driving habits.

**Maintenance+Plus.\*** This extended plan ensures your Nissan will receive up to 17 different services and over 33 different inspection items at each visit, using the most up-to-date diagnostic equipment available.

**Genuine Nissan Parts.** When it comes time for service, any necessary replacement parts will be made using Genuine Nissan new or remanufactured parts, or Nissan-approved parts. And they're the only parts to carry Nissan's factory-backed limited warranty.

**Nissan Mobility Assist.** This program offers reimbursements toward the purchase and installation of certain mobility assistance products for program-eligible Nissans. Go to [NissanUSA.com/mobility](http://NissanUSA.com/mobility) for more info.

### Thumbs Off Your Phone While Driving!

Every year, too many people die because we can't put our phones down while driving. That's why Nissan is supporting the Red Thumb Movement as part of our ongoing commitment to help reduce fatalities on the road. So paint your thumbnail red as a reminder not to pick up your phone when you're behind the wheel. Find out more at [NissanUSA.com/redthumb](http://NissanUSA.com/redthumb)



Follow us: [@NissanSupport](https://twitter.com/NissanSupport)

At [NissanUSA.com](http://NissanUSA.com), you'll find virtual product demonstrations, a way to "build your own Nissan," a dealer locator, and more information about key Nissan support services. Or if you'd prefer, call **1-800-NISSAN-3** for answers to specific questions about Versa® Note® or any other Nissan vehicle. The Nissan names, logos, product names, feature names, and slogans are trademarks owned by or licensed to Nissan Motor Co. Ltd. and/or its North American subsidiaries. Other trademarks and trade names are those of their respective owners. **Always wear your seat belt, and please don't drink and drive.** ©2015 Nissan North America, Inc.

This brochure is intended for general descriptive and informational purposes only. It is subject to change and does not constitute an offer, representation or warranty (express or implied) by Nissan North America, Inc. Interested parties should confirm the accuracy of any information in this brochure as it relates to a vehicle directly with Nissan North America, Inc., before relying on it to make a purchase decision. Nissan North America, Inc., reserves the right to make changes, at any time, without prior notice, in prices, colors, materials, equipment, specifications, and models and to discontinue models or equipment. Due to continuous product development and other pre- and post-production factors, actual vehicle, materials and specifications may vary from this brochure. Some vehicles shown with optional equipment. See the actual vehicle for complete accuracy. Availability and delivery times for particular models or equipment may vary. Specifications, options and accessories may differ in Hawaii, U.S. territories and other countries. For additional information on availability, options or accessories, see your Nissan dealer or contact Nissan North America, Inc.



Sign up for the latest news and updates on the 2016 Nissan Versa® Note®

or visit [NissanUSA.com/versa](http://NissanUSA.com/versa)

Los folletos de Nissan también están disponibles en español. Para descargar el PDF, visita:

[NissanUSA.com/folletos-espanol](http://NissanUSA.com/folletos-espanol)

And follow Nissan on:

