



Innovation  
that excites

# 2017 VERSA® NOTE®

## SWIPE FOR MORE INFO

Download the Interactive Brochure Hub app on your tablet and you'll have Versa® Note® and the whole Nissan lineup at your fingertips. Get the full product story enhanced with interactive demos and videos, plus complete info on trim levels, colors, accessories, and more.



Nissan Interactive Brochure Hub available free on the App Store® and Google Play.®

Or go to [NissanUSA.com](http://NissanUSA.com) to view on your desktop.



## NISSAN ROADSIDE ASSISTANCE

Your peace of mind is on us. For 36 months or 36,000 miles, whichever comes first, your new Nissan is covered for the following:<sup>1</sup>

- Flat-tire changes
- Trip Interruption benefits
- Jump starts
- Vehicle lockouts
- Emergency fuel delivery



Innovation  
that excites

Follow Nissan on:



visit [NissanUSA.com/versa-note](http://NissanUSA.com/versa-note)

<sup>1</sup>Roadside Assistance and Trip Interruption available during the first 36 months or 36,000 miles (whichever occurs first) after initial new vehicle delivery. Restrictions apply. See Owner's Manual for details. The App Store® is a registered trademark of Apple, Inc. All rights reserved. Facebook® is a registered trademark of Facebook, Inc. Google Play® is a registered trademark of Google, Inc. Twitter® is a registered trademark of Twitter, Inc. YouTube® is a registered trademark of Google Inc.

PRINTED IN USA

**TAKE ON** a spontaneous road trip. Bring your friends along and all their gear – you've got the room.<sup>1</sup> Forget the itinerary, and play it by ear with directions<sup>2,3</sup> and music you can change on the fly.<sup>4</sup> Pit stop: Catch that show downtown. Pull in to that tight spot, cameras all around your car help make parking a piece of cake.<sup>2,5</sup> The 2017 Nissan Versa® Note.® Ready for life in **THE NOW.**

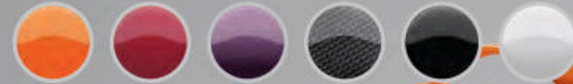


<sup>1</sup>Cargo and load capacity limited by weight and distribution. Always secure all cargo. <sup>2</sup>Available feature. <sup>3</sup>Never program while driving; GPS mapping may not be detailed in all areas or reflect current road status. <sup>4</sup>Driving is serious business and requires your full attention. If you have to use the connected device while driving, exercise extreme caution at all times so full attention may be given to vehicle operation. External device not included. <sup>5</sup>Parking aid/convenience feature. Cannot completely eliminate blind spots. May not detect every object and does not warn of moving objects. Always check surroundings and turn to look behind you before moving vehicle.

Nissan Versa® Note® SR shown in Metallic Blue.

## VERSA® NOTE® COLOR STUDIO™

With Versa Note Color Studio, you can make your Versa Note one of a kind. Choose from a large selection of accents and finishers, including side mirror caps, door handle covers, a rear roof spoiler, and more, along with color-coordinated 15" alloy wheels. Pick one or multiple accessories. Choose one or all of the colors. Your ride, your choice.



Nissan has taken care to ensure that the color swatches presented here are the closest possible representations of actual vehicle colors. Swatches may vary slightly due to the printing process and whether viewed in daylight, fluorescent or incandescent light. Please see the actual colors at your local Nissan dealer.

## GO THE DISTANCE

Wouldn't it be cool if you could get up to 39 MPG highway in a roomy, comfortable car that's lots of fun to drive? With Versa Note, you can. We got there by developing everything from exterior aerodynamics that whisper through the wind, to an advanced 1.6-liter 4-cylinder engine, to a virtually gearless Xtronic CVT® transmission that maximizes efficiency and performance.<sup>2</sup>

Continuously Variable Transmission (CVT) | Aerodynamic design

<sup>2</sup>2017 EPA Fuel Economy Estimate 39 highway/31 city MPG for Versa® Note®. Actual mileage may vary with driving conditions - use for comparison only.

UP TO  
**39**  
MPG HIGHWAY<sup>2</sup>



## ADAPT IN A SNAP

When living in the moment is all part of the plan, Versa Note has your cargo needs covered with the super-versatile available Divide-N-Hide® Adjustable Floor.<sup>1</sup> Lower the floor to accommodate taller items, or lift it up to find a convenient hiding place. Plus, the rear 60/40 split seats let you bring friends and oversized items. Or fold down both sides to create a flat cargo area.

<sup>1</sup>Cargo and load capacity limited by weight and distribution. Always secure all cargo.

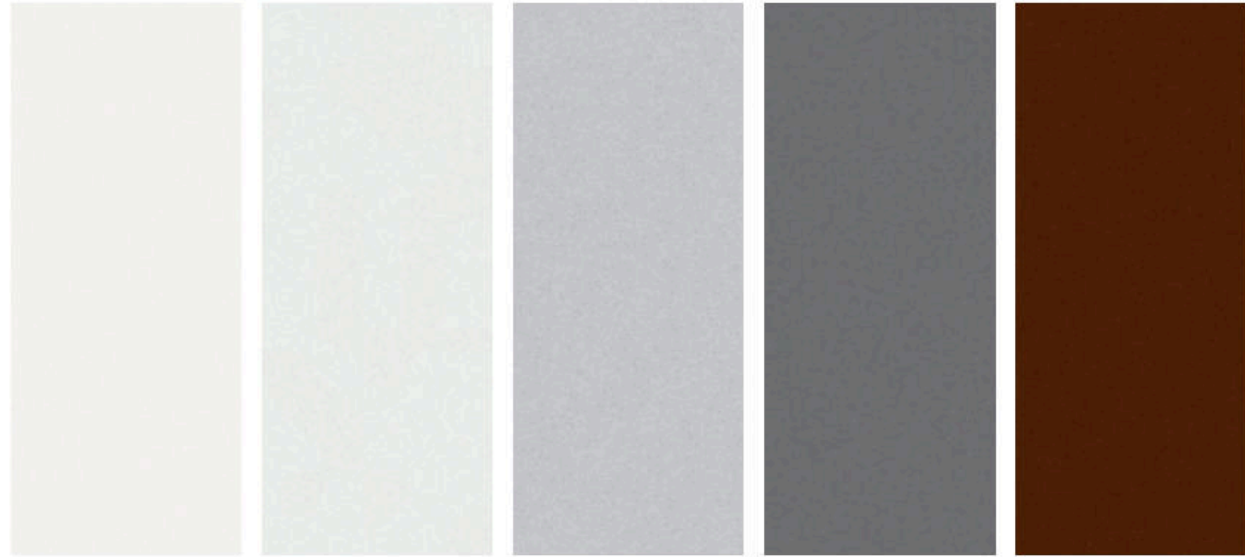
IT'S TIME FOR SOMETHING NEW

## TAKE ON THAT SPACE

Parallel parking just got a whole lot easier, thanks to Versa Note's available Around View® Monitor.<sup>3</sup> Four cameras give you a virtual 360° bird's-eye view of your vehicle, with selectable split-screen close-ups of the front, rear, and curbside views, so you can get a better look.<sup>4</sup>

<sup>3</sup>Parking aid/convenience feature. Cannot completely eliminate blind spots. May not detect every object and does not warn of moving objects. Always check surroundings and turn to look behind you before moving vehicle. <sup>4</sup>Virtual composite 360° view.

CHOOSE YOUR COLOR



Fresh Powder QM1

S PLUS  SV  SR  SL

Aspen White<sup>1</sup> QAC

S PLUS  SV  SR  SL

Brilliant Silver K23

S PLUS  SV  SR  SL

Gun Metallic KAD

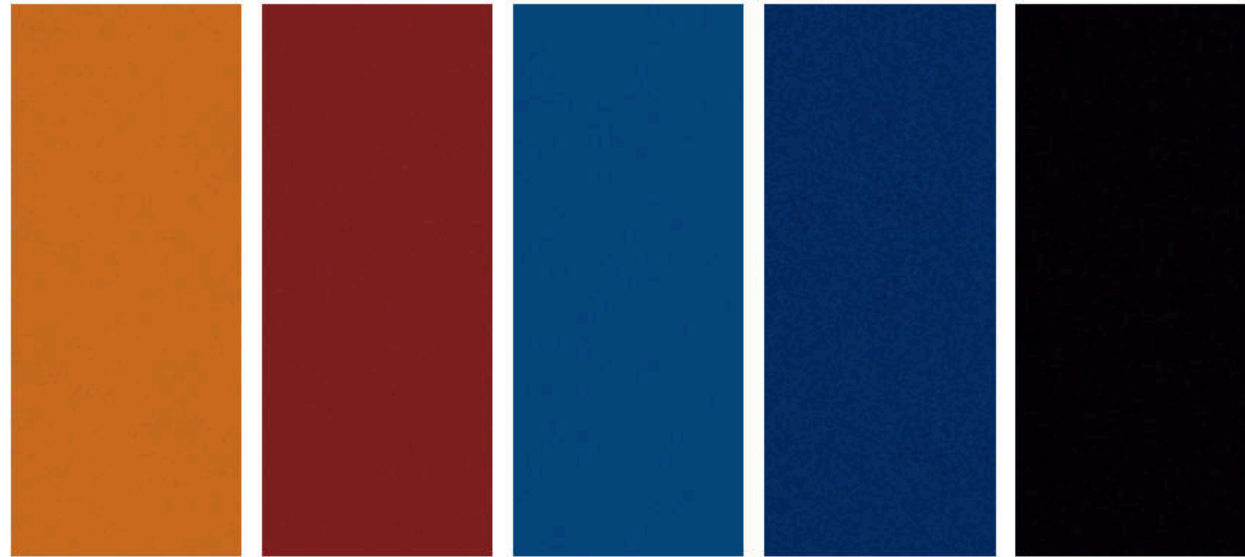
S PLUS  SV  SR  SL

Cocoa Embers CAQ

S PLUS  SV  SR  SL

CHARCOAL CLOTH

WHEAT STONE CLOTH



Monarch Orange<sup>1</sup> EBB

S PLUS  SV  SR  SL

Cayenne Red NAH

S PLUS  SV  SR  SL

Metallic Blue B17

S PLUS  SV  SR  SL

Deep Blue Pearl RAY

S PLUS  SV  SR  SL

Super Black KH3

S PLUS  SV  SR  SL

CHARCOAL CLOTH

WHEAT STONE CLOTH

Standard

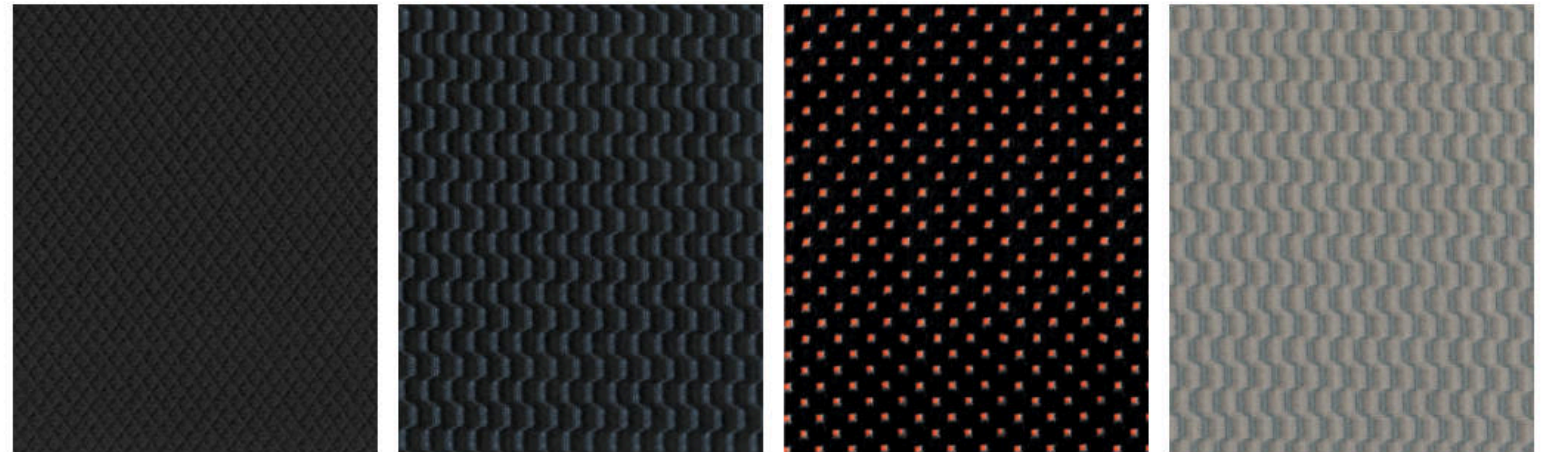
<sup>1</sup>Extra cost option.

Nissan has taken care to ensure that the color swatches presented here are the closest possible representations of actual vehicle colors. Swatches may vary slightly due to the printing process and whether viewed in daylight, fluorescent or incandescent light. Please see the actual colors at your local Nissan dealer.

CHOOSE YOUR INTERIOR



Versa<sup>®</sup> Note<sup>®</sup> SL shown in Wheat Stone Cloth.



Charcoal Cloth S Plus

Charcoal Cloth SV|SL

Charcoal Cloth SR

Wheat Stone Cloth SV|SL

## CHOOSE YOUR TRIM LEVEL

### S PLUS

- 1.6-liter 4-cylinder engine
- Xtronic CVT® (Continuously Variable Transmission)
- Active grille shutter
- 15" x 5.5" steel wheels with wheel covers
- P185/65HR15 all-season low rolling resistance tires
- Dual power outside mirrors
- Bluetooth® Hands-free Phone System¹
- Air conditioning
- Fine Vision electroluminescent gauges
- Cup holders in center console
- 60/40 Split fold-down rear seats
- AM/FM/CD audio system with auxiliary audio input jack²
- MP3/WMA CD playback capability
- Illuminated steering wheel-mounted audio controls
- 4-wheel Anti-lock Braking System (ABS)
- Vehicle Dynamic Control (VDC)³ with Traction Control System (TCS)
- Nissan Advanced Air Bag System⁴
- Sun visors with vanity mirrors and extensions



### SV INCLUDES S PLUS EQUIPMENT PLUS:

- 5.0" Color Display Audio
- Premium AM/FM/CD audio system
- Hands-free text messaging assistant⁵
- Streaming audio via Bluetooth® wireless technology¹
- SiriusXM® Satellite Radio⁶
- RearView Monitor⁷
- Upgraded Fine Vision electroluminescent gauges with trip computer and outside temperature display
- Integrated Key with remote keyless entry
- Power windows and door locks
- Cruise control
- USB connection port for iPod® interface and other compatible devices²
- Divide-N-Hide® Adjustable Floor
- 6-way manual driver's seat with armrest and upgraded cloth seat and door trim
- Leather-wrapped steering wheel
- Piano Black trim and silver accents on shift knob and shift surround
- Chrome inside door handles and chrome-accented center vents



#### KEY AVAILABLE PACKAGE:

- Appearance Package

### SR INCLUDES SV EQUIPMENT PLUS:

- 16" x 6.0" machine-finished split 5-spoke aluminum-alloy wheels
- P195/55HR16 all-season low rolling resistance tires
- Sport side sills
- Fog lights
- Dual power outside mirrors with LED turn signals
- Rear roof spoiler
- Suede-like seat fabric with color accents and stitching
- Leather-wrapped sport steering wheel
- Variable intermittent flat-blade windshield wipers
- Rear-seat fold-down center armrest with cup holders



#### KEY AVAILABLE PACKAGE:

- Technology Package

### SL INCLUDES SV EQUIPMENT PLUS:

- 16" x 6.0" machine-finished aluminum-alloy wheels
- P195/55HR16 all-season low rolling resistance tires
- Nissan Navigation System with 5.8" color touch-screen monitor⁸
- Voice Recognition for audio and navigation⁸
- SiriusXM® Traffic and Travel Link⁹,¹⁰
- Around View® Monitor⁷
- Nissan Intelligent Key® with Push Button Ignition
- Heated front seats
- Fog lights
- Dual power heated outside mirrors
- Variable intermittent flat-blade windshield wipers
- Rear-seat fold-down center armrest with cup holders
- Tire Pressure Monitoring System (TPMS) with Easy-Fill Tire Alert⁹,¹⁰



Images may show additional available equipment. <sup>1</sup>Availability of specific features is dependent upon the phone's Bluetooth® support. Please refer to your phone Owner's Manual for details. Bluetooth® word mark and logos are owned by Bluetooth SIG, Inc., and any use of such marks by Nissan is under license. See [NissanUSA.com/bluetooth](http://NissanUSA.com/bluetooth) for details. <sup>2</sup>Driving is serious business and requires your full attention. If you have to use the connected device while driving, exercise extreme caution at all times so full attention may be given to vehicle operation. iPod® is a registered trademark of Apple, Inc. All rights reserved. iPod® or other external device not included. <sup>3</sup>VDC, which should remain on when driving except when freeing the vehicle from mud or snow, cannot prevent accidents due to abrupt steering, carelessness, or dangerous driving techniques. <sup>4</sup>Air bags are only a supplemental restraint system; always wear your seat belt. Even with the occupant-classification sensor, rear-facing child restraints should not be placed in the front-passenger's seat. All children 12 and under should ride in the rear seat properly secured in child restraints, booster seats, or seat belts according to their size. Air bags will only inflate in certain accidents; see your Owner's Manual for more details. <sup>5</sup>Use the text messaging feature after stopping your vehicle in a safe location. If you have to use the feature while driving, exercise extreme caution at all times so full attention may be given to vehicle operation. Compatible smartphone required. Text rates and/or data usage may apply. <sup>6</sup>Required monthly subscriptions sold separately for each available SiriusXM® feature after trial period, and are continuous until you call SiriusXM to cancel. Installation costs, one-time activation fee, other fees and taxes will apply. Each SiriusXM® feature availability is dependent upon vehicle model, trim level, packaging, and/or options, and may only be available in select markets. Satellite Radio U.S. service, NavWeather® service, and SiriusXM® Travel Link® services (if any of the foregoing features are equipped on vehicle) available only to those 18 or older in the 48 contiguous states and D.C. Fees and programming subject to change. Subscriptions governed by Customer Agreement available at [siriusxm.com](http://siriusxm.com). ©2016 Sirius XM Radio Inc. Sirius, XM and all related marks and logos are trademarks of Sirius XM Radio Inc. <sup>7</sup>Parking aid/convenience feature. Cannot completely eliminate blind spots. May not detect every object and does not warn of moving objects. Always check surroundings and turn to look behind you before moving vehicle. <sup>8</sup>Never program while driving. GPS mapping may not be detailed in all areas or reflect current road status. <sup>9</sup>TPMS is not a substitute for regular tire pressure checks. <sup>10</sup>Vehicle must be on for the Easy-Fill Tire Alert to operate. Facebook® is a registered trademark of Facebook, Inc. iHeartRadio® is a trademark of iHeart Media. Pandora® is a registered trademark of Pandora Media. Twitter® is a registered trademark of Twitter, Inc.

CHOOSE YOUR PACKAGE



**APPEARANCE PACKAGE** | sv

- 15" split 6-spoke aluminum-alloy wheels
- Fog lights
- Variable intermittent windshield wipers

CHOOSE YOUR ACCESSORY PACKAGE



**15" ALUMINUM-ALLOY WHEELS** | sv

- 15" Aluminum-alloy wheels



**FOG LIGHTS PACKAGE** | sv

- Fog lights
- Variable intermittent windshield wipers



**TECH PACKAGE** | sr

- Nissan Navigation System with 5.8" color touch-screen monitor<sup>1</sup>
- Voice Recognition for audio and navigation<sup>1</sup>
- SiriusXM<sup>®</sup> Traffic and Travel Link<sup>2</sup>



**SPORT VALUE PACKAGE** | sv

- 15" Aluminum-alloy wheels (shown above)
- Rear roof spoiler



**16" SPORTY ALUMINUM-ALLOY WHEELS** | sl

- 16" Sporty aluminum-alloy wheels

Images may show additional available equipment. <sup>1</sup>Never program while driving. GPS mapping may not be detailed in all areas or reflect current road status. <sup>2</sup>Required monthly subscriptions sold separately for each available SiriusXM<sup>®</sup> feature after trial period, and are continuous until you call SiriusXM to cancel. Installation costs, one-time activation fee, other fees and taxes will apply. Each SiriusXM<sup>®</sup> feature availability is dependent upon vehicle model, trim level, packaging, and/or options, and may only be available in select markets. Satellite Radio U.S. service, NavWeather<sup>®</sup> service, and SiriusXM<sup>®</sup> Travel Link<sup>®</sup>

services (if any of the foregoing features are equipped on vehicle) available only to those 18 or older in the 48 contiguous states and D.C. Fees and programming subject to change. Subscriptions governed by Customer Agreement available at [siriusxm.com](http://siriusxm.com). ©2016 Sirius XM Radio Inc. Sirius, XM<sup>®</sup> and all related marks and logos are trademarks of Sirius XM Radio Inc.

## CHOOSE YOUR ACCESSORIES



Every Genuine Nissan Accessory is custom-fit, custom-designed and durability-tested. Each one is also backed by Nissan's 3-year/36,000-mile (whichever occurs first) limited warranty (if installed by dealer at the time of purchase).<sup>1</sup> Plus, they can be financed when installed by dealer at time of purchase.

- A. Interior Accent Lighting**  
Bring a bit of the club along for the drive.
- B. Rear Roof Spoiler**  
Go ahead, spoil yourself.
- C. Illuminated Kick Plates**  
Let your door sills play dress-up.
- D. 15" Aluminum-alloy Wheels**  
Attitude comes standard.
- E. Chrome Rear Hatch Accent**  
Finish with a sleek touch.
- F. Nissan WiFi & Apps<sup>2</sup>**  
Connected passengers are happy passengers.
- G. All-season Floor Mats**  
Bring on the weather.
- H. Rear Cargo Cover and Carpeted Cargo Mat (sold separately)<sup>3</sup>**  
Think of them as a secret fortress for your cargo.

#### Additional Accessories:

- Chrome Rear Hatch Accent
- Interior Trim Appliqués
- Divide-N-Hide<sup>®</sup> Adjustable Floor<sup>3</sup>
- Carpeted Floor Mats
- Splash Guards
- And More

## GENUINE NISSAN ACCESSORIES

# TURN BRAND-NEW INTO ALL YOU

For more information and to shop online for Versa<sup>®</sup> Note<sup>®</sup> Genuine Nissan Accessories, go to [bit.ly/17versanote-estore](http://bit.ly/17versanote-estore)



To see Genuine Nissan Accessories in action, go to [bit.ly/17versanote\\_gnavideos](http://bit.ly/17versanote_gnavideos)

**Nissan Versa<sup>®</sup> Note<sup>®</sup> SL** shown in Aspen White with 16" Sporty Aluminum-alloy Wheels, Rear Roof Spoiler, Chrome Door Handle Accents, and Fog Lights (standard on SR and SL trims).

<sup>1</sup>Genuine Nissan Accessories are covered by Nissan's Limited Warranty on Genuine Nissan Replacement Parts, Genuine NISMO<sup>®</sup> S-Tune Parts, and Genuine Nissan Accessories for the longer of 12 months/12,000 miles (whichever occurs first) or the remaining period under the 3-year/36,000-mile (whichever occurs first) Nissan New Vehicle Limited Warranty. Terms and conditions apply. See Warranty Information Booklet for details. <sup>2</sup>Driving is serious business and requires your full attention. Only use Nissan WiFi and Apps Services powered by Autonet Mobile when safe to do so. Only available on select models. See [Nissanwifi.com](http://Nissanwifi.com) for complete availability details. Never program while driving. GPS mapping may not be

detailed in all areas or reflect current road status. Nissan WiFi and Apps Services requires compatible cellular network provided by Autonet, navigation map data, and GPS satellite signal receptions, the absence of which can limit or prevent the ability of the Nissan WiFi and Apps Services. Cellular network and GPS signals not available in all areas and/or at all times. Technology is evolving, and changes to cellular networks provided by independent companies or other third party changes that impact Nissan WiFi and Apps Services are not within Nissan's control. Should a third party or Autonet Mobile terminate or make changes that impact the service, service may be terminated without notice and Nissan shall have no liability. The Apps Services requires compatible smartphone or personal computer, not included with vehicle. Enrollment and Subscription Agreement is required to receive full suite of Nissan WiFi and Apps Services through Autonet Mobile. The 90 day trial period for Apps Services begins when the unit is registered with Autonet Mobile; subsequently the respective paid subscription for WiFi is at the then current rate to continue to receive respective services. Terms and conditions of Subscription Agreement then apply. Text rates and/or data usage may apply. <sup>3</sup>Cargo and load capacity limited by weight and distribution. Always secure all cargo.

## SPECIFICATIONS

Engine	S Plus	SV	SR	SL
HR16DE - 1.6-liter DOHC 16-valve 4-cylinder engine	■	■	■	■
— Horsepower - 109 hp @ 6,000 rpm				
— Torque - 107 lb-ft @ 4,400 rpm				
Emissions - Tier 2-Bin 5 (EPA); LEV2-ULEV (CARB)	■	■	■	■
Dual injector system	■	■	■	■
Continuously Variable Valve Timing Control System (CVTCS) on intake and exhaust valves	■	■	■	■
Nissan Direct Ignition System	■	■	■	■
Platinum-tipped spark plugs	■	■	■	■
Electronic drive-by-wire throttle	■	■	■	■

Drivetrain	S Plus	SV	SR	SL
Front engine/Front-wheel Drive	■	■	■	■
Xtronic CVT* (Continuously Variable Transmission)	■	■	■	■

Brakes	S Plus	SV	SR	SL
Vented front disc/rear drum brakes	■	■	■	■
4-wheel Anti-lock Braking System (ABS)	■	■	■	■
Electronic Brake force Distribution (EBD)	■	■	■	■
Brake Assist	■	■	■	■

Suspension/Steering	S Plus	SV	SR	SL
Independent strut front suspension with stabilizer bar	■	■	■	■
Torsion beam rear axle with integrated stabilizer bar	■	■	■	■
Vehicle-speed-sensitive electric power steering	■	■	■	■

Wheels/Tires	S Plus	SV	SR	SL
15" x 5.5" Steel wheels with wheel covers	■	■		
15" x 5.5" split 5-spoke aluminum-alloy wheels		A		
15" x 5.5" split 6-spoke aluminum-alloy wheels		S		
16" x 6.0" Aluminum-alloy wheels				■
16" x 6.0" Machine-finished aluminum-alloy wheels			■	
16" x 6.0" Sporty aluminum-alloy wheels				AC
P185/65HR15 All-season low rolling resistance tires	■	■		
P195/55HR16 All-season low rolling resistance tires			■	■

Exterior Features	S Plus	SV	SR	SL
Multi-reflector halogen headlights	■	■	■	■
Sport grille and smoked headlights			■	
Aerodynamic taillights	■	■	■	■
Sport side sills and rear roof spoiler			■	
Fog lights		F, A	■	■
Dual power outside mirrors	■	■		
Dual power outside mirrors with LED turn signals			■	
Dual power heated outside mirrors				■
Active grille shutter	■	■	■	■
Rear roof spoiler		S		

■ Standard  
T Part of SR Tech Package

F Part of Fog Lights Package  
S Part of Sport Value Package

A Part of SV Appearance Package  
■ Part of Interior Illumination Package

AC Accessory

Comfort/Convenience	S Plus	SV	SR	SL
Hands-free text messaging assistant <sup>1</sup>		■	■	■
RearView Monitor		■	■	
Around View <sup>®</sup> Monitor			■	■
Bluetooth <sup>®</sup> Hands-free Phone System <sup>2</sup>	■	■	■	■
Fine Vision electroluminescent gauges with trip computer	■			
Upgraded Fine Vision electroluminescent gauges with trip computer and outside temperature display		■	■	■
Air conditioning	■	■	■	■
Integrated Key with remote keyless entry		■	■	
Nissan Intelligent Key <sup>®</sup> with Push Button Ignition				■
Power door locks with auto-locking feature		■	■	■
Power windows with driver's one-touch auto-down feature			■	■
Tilt steering column	■	■	■	■
Cruise control		■	■	■
Variable intermittent flat-blade windshield wipers		F, A	■	■
Intermittent rear window wiper	■	■	■	■
Rear window defroster	■	■	■	■
Front map light	■	■	■	■
Cargo area light	■	■	■	■
Front door map pockets with bottle holders	■	■	■	■
Front cup holders in center console	■	■	■	■
Rear cup holders in center console	■	■	■	■
Rear cup holders in rear-seat center armrest	■	■	■	■
Front passenger seatback map pocket	■	■	■	■
Divide-N-Hide <sup>®</sup> Adjustable Floor	■	■	■	■
Sun visors with vanity mirrors and extensions	■	■	■	■
Digital clock	■	■	■	■
Auxiliary 12-volt DC power outlet	■	■	■	■
Battery saver	■	■	■	■

Seating/Appointments	S Plus	SV	SR	SL
4-way manual driver's seat	■			
6-way manual driver's seat		■	■	■
Driver's seat armrest	■	■	■	■
Heated front seats				■
60/40 Split fold-down rear seats	■	■	■	■
Cloth seat trim	■			
Upgraded cloth seat trim		■		■
Suede-like seat fabric with color accents and stitching			■	
Cloth door trim accent		■	■	■
Leather-wrapped steering wheel		■	■	■
Leather-wrapped sport steering wheel			■	
Piano Black trim	■	■	■	■
Silver accents on dash and vent rings	■	■	■	■
Silver accents on shift knob and shifter surround		■	■	■
Chrome inside door handles and chrome-accented center vents		■	■	■
Printed non-woven fabric headliner		■	■	■
Illuminated kick plates	■	■	■	■
Interior accent lighting	■	■	■	■

Audio/Entertainment	S Plus	SV	SR	SL
5.0" Color Display Audio		■	■	■
Nissan Navigation System with 5.8" color touch-screen monitor and Voice Recognition for audio and navigation			T	■
SiriusXM <sup>®</sup> Traffic and Travel Link <sup>®3</sup>			T	■
AM/FM/CD audio system with four speakers	■			
Premium AM/FM/CD audio system with four speakers and 5.0" color display		■	■	
SiriusXM <sup>®</sup> Satellite Radio <sup>3</sup>		■	■	■
Streaming audio via Bluetooth <sup>®</sup> wireless technology <sup>2</sup>			■	■
MP3/WMA CD playback capability	■	■	■	■
Auxiliary audio input jack <sup>4</sup>	■	■	■	■
USB connection port for iPod <sup>®</sup> interface and other compatible devices <sup>4</sup>		■	■	■
Radio Data System (RDS)	■	■	■	■
Speed-sensitive volume control	■	■	■	■
Illuminated steering wheel-mounted audio controls	■	■	■	■

Safety/Security	S Plus	SV	SR	SL
Nissan Advanced Air Bag System with dual-stage supplemental front air bags with seat-belt and occupant-classification sensors	■	■	■	■
Driver and front-passenger seat-mounted side-impact supplemental air bags	■	■	■	■
Roof-mounted curtain side-impact supplemental air bags for front- and rear-seat outboard occupant head protection	■	■	■	■
Vehicle Dynamic Control (VDC) with Traction Control System (TCS)	■	■	■	■
3-point ALR/ELR passenger seat belt system (ELR for driver)	■	■	■	■
Height-adjustable front head restraints	■	■	■	■
Rear outboard head restraints	■	■	■	■
LATCH System (Lower Anchors and Tethers for Children)	■	■	■	■
Zone Body construction with front and rear crumple zones	■	■	■	■
Pipe-style steel side-door guard beams	■	■	■	■
Tire Pressure Monitoring System (TPMS)	■	■	■	■
Tire Pressure Monitoring System (TPMS) with Easy-Fill Tire Alert				■
Nissan Vehicle Immobilizer System				■

<sup>1</sup>Use the text messaging feature after stopping your vehicle in a safe location. If you have to use the feature while driving, exercise extreme caution at all times so full attention may be given to vehicle operation. Compatible smartphone required. Text rates and/or data usage may apply. <sup>2</sup>Availability of specific features is dependent upon the phone's Bluetooth<sup>®</sup> support. Please refer to your phone Owner's Manual for details. Bluetooth<sup>®</sup> word mark and logos are owned by Bluetooth SIG, Inc., and any use of such marks by Nissan is under license. See [NissanUSA.com/bluetooth](http://NissanUSA.com/bluetooth) for details. <sup>3</sup>Required monthly subscriptions sold separately for each available SiriusXM<sup>®</sup> feature after trial period, and are continuous until you call SiriusXM to cancel. Installation costs, one-time activation fee, other fees and taxes will apply. Each SiriusXM<sup>®</sup> feature availability is dependent upon vehicle model, trim level, packaging, and/or options, and may only be available in select markets. Satellite Radio U.S. service, NavWeather<sup>®</sup> service, and SiriusXM<sup>®</sup> Travel Link<sup>®</sup> services (if any of the foregoing features are equipped on vehicle) available only to those 18 or older in the 48 contiguous states and D.C. Fees and programming subject to change. Subscriptions governed by Customer Agreement available at [siriusxm.com](http://siriusxm.com). ©2016 Sirius XM Radio Inc. Sirius<sup>®</sup> XM<sup>®</sup> and all related marks and logos are trademarks of Sirius XM Radio Inc. <sup>4</sup>Driving is serious business and requires your full attention. If you have to use the connected device while driving, exercise extreme caution at all times so full attention may be given to vehicle operation. iPod<sup>®</sup> is a registered trademark of Apple, Inc. All rights reserved. iPod<sup>®</sup> or other external device not included. This brochure is intended for general descriptive and informational purposes only. It is subject to change and does not constitute an offer,

## DIMENSIONS/CAPACITIES/WEIGHTS/MPG

Dimensions - Inches	
<b>Exterior</b>	
Wheelbase	102.4
Overall length	163.7
Overall width	66.7
Overall height	60.5
Track width (front/rear)	58.3/58.5

Aerodynamics - Cd	S Plus	SV	SR	SL
Drag coefficient	0.298	0.298	0.300	0.298

Interior (front/rear)			
Head room	40.8/38.0	Hip room	48.5/48.8
Leg room	41.3/38.3	Shoulder room	51.7/51.9

Capacities	
Seating capacity	5
Interior passenger volume (cu. ft.)	94.1
Cargo volume with rear seats up (cu. ft.)	18.8
Cargo volume with rear seats down (cu. ft.)	38.3
Fuel tank (gals.)	10.8

Curb Weights - Lbs.				
	S Plus	SV	SR	SL
Xtronic CVT*	2,460	2,485	2,523	2,521

2016 EPA Fuel Economy Estimates (City/Highway/Combined)				
	S Plus	SV	SR	SL
Xtronic CVT*	31/34/39	31/34/39	31/34/39	31/34/39
*Actual mileage may vary with driving conditions - use for comparison only.				

representation or warranty (express or implied) by Nissan North America, Inc. Interested parties should confirm the accuracy of any information in this brochure as it relates to a vehicle directly with Nissan North America, Inc., before relying on it to make a purchase decision. Nissan North America, Inc., reserves the right to make changes, at any time, without prior notice, in prices, colors, materials, equipment, specifications, and models and to discontinue models or equipment. Due to continuous product development and other pre- and post-production factors, actual vehicle, materials and specifications may vary from this brochure. Some vehicles shown with optional equipment. See the actual vehicle for complete accuracy. Availability and delivery times for particular models or equipment may vary. Specifications, options and accessories may differ in Hawaii, U.S. territories and other countries. For additional information on availability, options or accessories, see your Nissan dealer or contact Nissan North America, Inc. At [NissanUSA.com](http://NissanUSA.com), you'll find virtual product demonstrations, a way to "build your own Nissan," a dealer locator, and more information about key Nissan support services. Or if you'd prefer, call **1-800-NISSAN-3** for answers to specific questions about Versa<sup>®</sup> Note<sup>®</sup> or any other Nissan vehicle. The Nissan names, logos, product names, feature names, and slogans are trademarks owned by or licensed to Nissan Motor Co. Ltd. and/or its North American subsidiaries. Other trademarks and trade names are those of their respective owners. **Always wear your seat belt, and please don't drink and drive.** ©2016 Nissan North America, Inc. <sup>17</sup> Versa<sup>®</sup> Note<sup>®</sup> 1719163-N-10/16-60M-CGI