

NISSAN INTELLIGENT MOBILITY™

Nissan Intelligent Mobility guides everything we do. We're using new technologies to transform cars from mere driving machines into assistants. Together the journey is more confident, connected, and exciting. Whether it's cars that assist in the driving task, or highways that charge your EV as you go along, it's all in the very near future. And it's a future already taking shape in the Nissan you drive today.

SEE VERSA® NOTE® COME TO LIFE

Go to NissanUSA.com and find an interactive brochure for Versa® Note® and every Nissan in the lineup. Available on desktop or smartphone, it's the full product story – including demos, videos, and complete info on trims, colors, and accessories.

Or download the Interactive Brochure Hub app on your tablet. Free on the App Store® and Google Play.™



Innovation
that excites

2018
VERSA® NOTE®



¹Cargo shown for display purposes only. Cargo and load capacity limited by weight and distribution. Always secure all cargo. ²2018 EPA Fuel Economy Estimate 39 highway/31 city MPG for Versa® Note®. Actual mileage may vary with driving conditions - use for comparison only. ³Parking aid/convenience feature. Cannot completely eliminate blind spots. May not detect every object and does not warn of moving objects. Always check surroundings and turn to look behind you before moving vehicle. ⁴Extra cost option. ⁵Feature availability is dependent on vehicle model, trim level, packaging and options. Compatible connected device may be required and feature availability may be dependent on device's capability. Refer to connected device's owner's manual for details. Late availability for some features. Driving is serious business and requires your full attention. Only use features and connected devices when safe and legal to do so. Some features, including automatic crash notification and SOS, are dependent upon the telematics device being in operative condition, its ability to connect to a wireless network, compatible wireless network availability, navigation map data and GPS satellite signal reception, the absence of which can limit or prevent the ability to reach Customer Care or receive support. GPS mapping may not be detailed in all areas or reflect current road status. Never program GPS while driving. Only use Remote Engine Start and Remote Horn features in accordance with any laws, rules or ordinances in effect in your vehicle's location. Some services and features are provided by independent companies not within Nissan's control. Should service provider terminate or restrict service or features, service or features may be suspended or terminated without notice or with no liability to Nissan or its partners or agents. Services and features may require compatible cellular network provided by independent companies not within Nissan or its partners' or agents' control. Cellular network signal strength may vary and may not be available in all areas or at all times. Services and features may not function if cellular network is unavailable, restricted, or terminated. Nissan and its partners or agents are not responsible for associated costs or other third party charges that may be required for continued operation due to cellular network unavailability, restriction, or termination (including equipment replacements/upgrades, if available, or roaming charges on alternative networks). Technology is evolving, and changes by independent companies are not within Nissan's or its partners' or agents' control. Enrollment, owner consent, personal identification number (PIN), and subscription agreement may be required to receive full suite of features and services. Trial periods (if applicable) begin on the date of vehicle purchase or lease of a new Nissan. Trial periods may be subject to change at any time and may be subject to early termination without notice. Required subscriptions may be sold separately for each available feature or service after trial period ends, and may continue until you call service provider to cancel. Installation costs, one-time activation fee, other fees and taxes may apply. Fees and programming subject to change. Feature may be subject to age restrictions in some areas. Subscriptions governed by service provider's subscription agreement, terms and conditions and privacy statements available at service provider's website. Text rates or data usage may apply. The Nissan names, logos and slogans are trademarks owned by or licensed to Nissan Motor Co. Ltd. or its North American subsidiaries. Other trademarks and trade names are those of their respective owners. For important safety information, system limitations, and additional operating and feature information, see dealer, Owner's Manual, or NissanUSA.com/connect/important-information. ⁶Driving is serious business and requires your full attention. If you have to use the connected device while driving, exercise extreme caution at all times so full attention may be given to vehicle operation. iPod® is a registered trademark of Apple, Inc. All rights reserved. iPod® or other external device not included. ⁷VDC, which should remain on when driving except when freeing the vehicle from mud or snow, cannot prevent accidents due to abrupt steering, carelessness, or dangerous driving techniques. ⁸Air bags are only a supplemental restraint system; always wear your seat belt. Even with the occupant-classification sensor, rear-facing child restraints should not be placed in the front-passenger's seat. All children 12 and under should ride in the rear seat properly secured in child restraints, booster seats, or seat belts according to their size. Air bags will only inflate in certain accidents; see your Owner's Manual for more details. ⁹Use the Text Messaging feature after stopping your vehicle in a safe location. If you have to use the feature while driving, exercise extreme caution at all times so full attention may be given to vehicle operation. Compatible smartphone required. Text rates and/or data usage may apply. ¹⁰TPMS is not a substitute for regular tire pressure checks. ¹¹Vehicle must be on for the Easy-Fill Tire Alert to operate. ¹²Genuine Nissan Accessories are covered by Nissan's Limited Warranty on Genuine Nissan Replacement Parts, Genuine NISMO® S-Tune Parts, and Genuine Nissan Accessories for the longer of 12 months/12,000 miles (whichever occurs first) or the remaining period under the 3-year/36,000-mile (whichever occurs first) Nissan New Vehicle Limited Warranty. Terms and conditions apply. See Warranty Information Booklet for details. The App Store® is a registered trademark of Apple, Inc. Bluetooth® is a registered trademark of Bluetooth SIG, Inc. Facebook® is a registered trademark of Facebook, Inc. Google Play™ is a trademark of Google Inc. HomeLink® is a registered trademark of Gentex Corporation. Siri® is a registered trademark of Apple, Inc. The Sirius®, XM®, and SiriusXM® names and all related marks and logos are trademarks of Sirius XM Radio Inc. Twitter® is a registered trademark of Twitter, Inc. YouTube® is a registered trademark of Google Inc.

TAKE ON A SPONTANEOUS ROAD TRIP. Grab your friends and all their gear – you've got the room. Forget the itinerary, and play it by ear with hands-free calling and music you can change on the fly. Pit stop: catch that show downtown. Back into that tight spot with available tech that helps make parking a breeze. The 2018 Nissan Versa® Note.® **TAKE ON TODAY.**



Nissan Versa® Note® SR shown in Deep Blue Pearl.

VERSA® NOTE® COLOR STUDIO®

With Versa Note Color Studio, you can make your Versa Note one of a kind. Choose from a selection of accents and finishers, including side mirror caps, door handle covers, a rear roof spoiler, and more, along with color-coordinated 15" alloy wheels. Pick one or more accents. Choose one or all of the colors.



GO THE DISTANCE

Wouldn't it be cool if you could get up to 39 MPG highway in a roomy, comfortable car that's lots of fun to drive? With Versa Note, you can. We got there by developing everything from exterior aerodynamics that whisper through the wind, to an advanced 1.6-liter 4-cylinder engine, to a virtually gearless Xtronic CVT* transmission that maximizes efficiency and performance?

Continuously Variable Transmission (CVT) / Aerodynamic design

UP TO
39
MPG HIGHWAY²



DIVIDE-N-HIDE® ADJUSTABLE FLOOR

When living in the moment is all part of the plan, Versa Note has your cargo needs covered with the super-versatile available Divide-N-Hide® Adjustable Floor.¹ Lower the floor to accommodate taller items, or lift it up to find a convenient hiding place. Plus, the rear 60/40 split seats let you bring friends and oversized items. Or fold down both sides to create a flat cargo area.

Nissan has taken care to ensure that the color swatches presented here are the closest possible representations of actual vehicle colors. Swatches may vary slightly due to the printing process and whether viewed in daylight, fluorescent or incandescent light. Please see the actual colors at your local Nissan dealer.

SNAG THAT SPOT

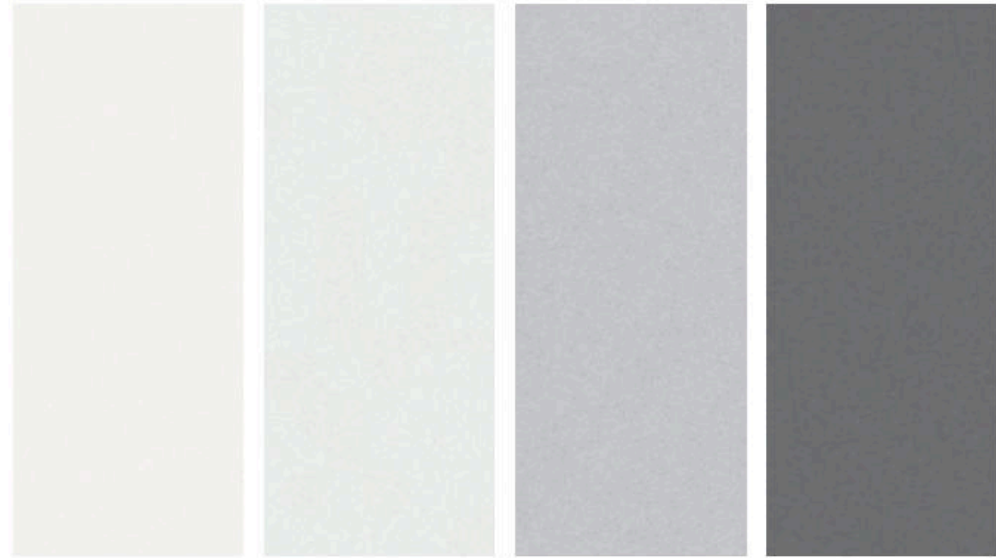
The available RearView Monitor helps you see what's directly behind you on the color display - helping to make parking easier.³





Nissan Versa® Note® SR shown in Charcoal Cloth with accessory Interior Accent Lighting.

CHOOSE YOUR COLOR



Fresh Powder QM1

Aspen White⁴ QAC

Brilliant Silver K23

Gun Metallic KAD

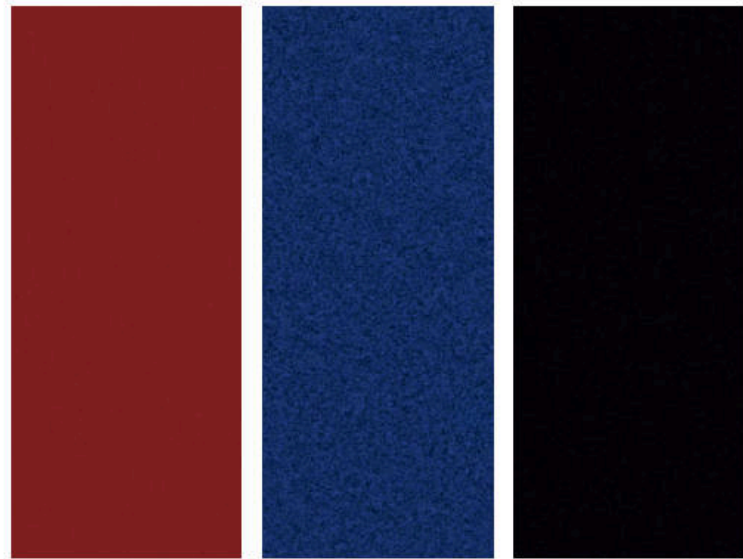
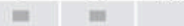
S SV SR

S SV SR

S SV SR

S SV SR

CHARCOAL CLOTH



Cayenne Red NAH

Deep Blue Pearl RAY

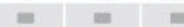
Super Black KH3

S SV SR

S SV SR

S SV SR

CHARCOAL CLOTH



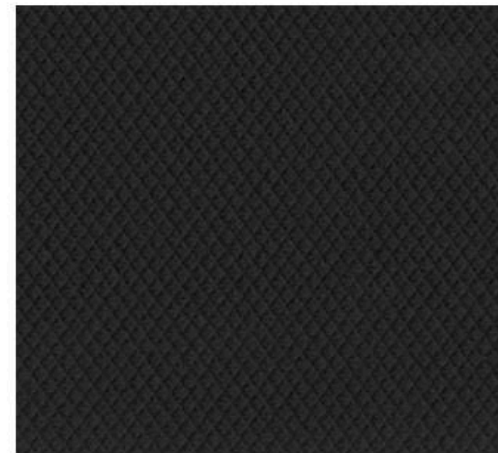
■ Standard

Nissan has taken care to ensure that the color swatches presented here are the closest possible representations of actual vehicle colors. Swatches may vary slightly due to the printing process and whether viewed in daylight, fluorescent or incandescent light. Please see the actual colors at your local Nissan dealer.

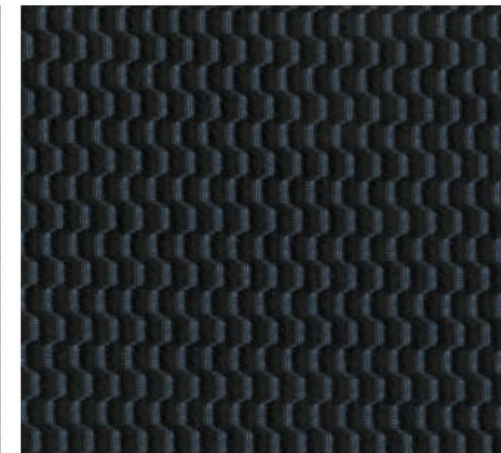
CHOOSE YOUR INTERIOR



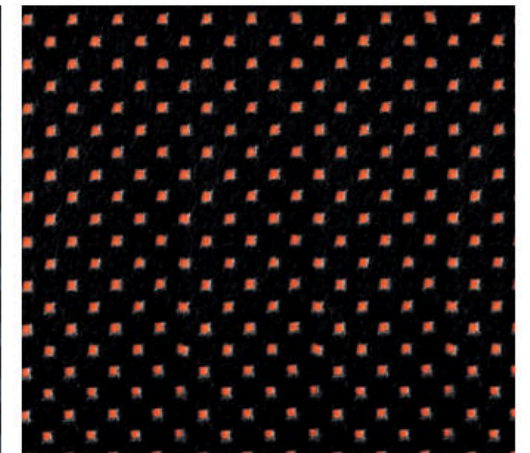
Versa[®] Note[®] SR shown in Charcoal Cloth.



Charcoal Cloth S



Charcoal Cloth SV



Charcoal Cloth SR

CHOOSE YOUR TRIM LEVEL

S

- 1.6-liter 4-cylinder engine
- Xtronic CVT® (Continuously Variable Transmission)
- Active grille shutter
- 15" x 5.5" steel wheels with wheel covers
- P185/65HR15 all-season low rolling resistance tires
- Dual power outside mirrors
- Bluetooth® Hands-free Phone System⁵
- Air conditioning
- Fine Vision electroluminescent gauges
- Cup holders in center console

- 60/40 Split fold-down rear seats
- AM/FM/CD audio system with auxiliary audio input jack⁶
- MP3/WMA CD playback capability
- Illuminated steering wheel-mounted audio controls
- 4-wheel Anti-lock Braking System (ABS)
- Vehicle Dynamic Control (VDC)⁷ with Traction Control System (TCS)
- Nissan Advanced Air Bag System⁸
- Sun visors with vanity mirrors and extensions



SR

INCLUDES SV EQUIPMENT PLUS:

- 16" x 6.0" machine-finished split 5-spoke aluminum-alloy wheels
- P195/55HR16 all-season low rolling resistance tires
- Sport side sills
- Fog lights
- Dual power outside mirrors with LED turn signals
- Rear roof spoiler
- Nissan Intelligent Key® with Push Button Ignition

- Suede-like seat fabric with color accents and stitching
- Leather-wrapped sport steering wheel
- Variable intermittent flat-blade windshield wipers
- Rear-seat fold-down center armrest with cup holders
- Tire Pressure Monitoring System (TPMS) with Easy-Fill Tire Alert^{10, 11}



SV

INCLUDES S EQUIPMENT PLUS:

- 5.0" Color Display Audio
- Premium AM/FM/CD audio system
- Hands-free Text Messaging assistant⁹
- Streaming audio via Bluetooth® wireless technology⁵
- SiriusXM® Satellite Radio⁵
- RearView Monitor⁵
- Upgraded Fine Vision electroluminescent gauges with trip computer and outside temperature display
- Integrated Key with remote keyless entry
- Power windows and door locks

- Cruise control
- USB connection port for iPod® interface and other compatible devices⁶
- Siri® Eyes Free⁵
- Divide-N-Hide® Adjustable Floor
- 6-way manual driver's seat with armrest and upgraded cloth seat and door trim
- Leather-wrapped steering wheel
- Piano Black trim and silver accents on shift knob and shift surround
- Chrome inside door handles and chrome-accented center vents



AVAILABLE PACKAGE:

- Special Edition Package

CHOOSE YOUR ACCESSORIES



Every Genuine Nissan Accessory is custom-fit, custom-designed and durability-tested. Each one is also backed by Nissan's 3-year/36,000-mile (whichever occurs first) limited warranty (if installed by dealer at the time of purchase).¹² Ask your dealer whether a specific Genuine Nissan Accessory may be financed when installed by the dealer at the time of purchase.

A. Interior Accent Lighting

Bring a bit of the club along for the drive.

B. Stainless Steel Exhaust Finisher

Eye-catching and built to last.

C. Illuminated Kick Plates

Let your door sills play dress-up.

D. Divide-N-Hide® Adjustable Floor¹

Stack, separate, and stash.

E. Auto-dimming RearView Mirror with HomeLink® and Compass

Car and home, in harmony.

F. Nissan WiFi & Apps⁵

Connected passengers are happy passengers.

G. All-season Floor Mats

Bring on the weather.

H. Rear Cargo Cover and Carpeted Cargo Mat (sold separately)¹

Think of them as a secret fortress for your cargo.

Additional Accessories:

- Chrome Rear Hatch Accent
- Interior Trim Appliqués
- 15" Black Aluminum-alloy Wheels
- Carpeted Floor Mats
- Splash Guards
- And More

GENUINE NISSAN ACCESSORIES

TURN BRAND-NEW INTO ALL YOU

For more information and to shop online for Versa® Note® Genuine Nissan Accessories, go to bit.ly/18versanote-estore



To see Genuine Nissan Accessories in action, go to bit.ly/18versanote_gnavideos

Nissan Versa® Note® SV shown in Super Black and Brilliant Silver with Versa Note Color Studio® 15" Aluminum-alloy Wheels, Side Mirror Covers, Door Handle Covers, Rear Roof Spoiler, Rear Hatch Accent, and Rearview Mirror Cover.

SPECIFICATIONS

| Engine | S | SV | SR |
|----------------------------------------------------------------------------------------|---|----|----|
| HR16DE - 1.6-liter DOHC 16-valve 4-cylinder engine | ■ | ■ | ■ |
| — Horsepower - 109 hp @ 6,000 rpm | | | |
| — Torque - 107 lb-ft @ 4,400 rpm | | | |
| Emissions - Tier 2-Bin 5 (EPA); LEV2-ULEV (CARB) | ■ | ■ | ■ |
| Dual injector system | ■ | ■ | ■ |
| Continuously Variable Valve Timing Control System (CVTCS) on intake and exhaust valves | ■ | ■ | ■ |
| Nissan Direct Ignition System | ■ | ■ | ■ |
| Platinum-tipped spark plugs | ■ | ■ | ■ |
| Electronic drive-by-wire throttle | ■ | ■ | ■ |

| Drivetrain | S | SV | SR |
|---------------------------------------------------|---|----|----|
| Front engine/Front-wheel Drive | ■ | ■ | ■ |
| Xtronic CVT* (Continuously Variable Transmission) | ■ | ■ | ■ |

| Brakes | S | SV | SR |
|-------------------------------------------|---|----|----|
| Vented front disc/rear drum brakes | ■ | ■ | ■ |
| 4-wheel Anti-lock Braking System (ABS) | ■ | ■ | ■ |
| Electronic Brake force Distribution (EBD) | ■ | ■ | ■ |
| Brake Assist | ■ | ■ | ■ |

| Suspension/Steering | S | SV | SR |
|--------------------------------------------------------|---|----|----|
| Independent strut front suspension with stabilizer bar | ■ | ■ | ■ |
| Torsion beam rear axle with integrated stabilizer bar | ■ | ■ | ■ |
| Vehicle-speed-sensitive electric power steering | ■ | ■ | ■ |

| Wheels/Tires | S | SV | SR |
|-----------------------------------------------------|---|----|----|
| 15" x 5.5" Steel wheels with wheel covers | ■ | ■ | |
| 15" x 5.5" split 5-spoke aluminum-alloy wheels | | S | |
| 16" x 6.0" Machine-finished aluminum-alloy wheels | | | ■ |
| P185/65HR15 All-season low rolling resistance tires | ■ | ■ | |
| P195/55HR16 All-season low rolling resistance tires | | | ■ |

| Exterior Features | S | SV | SR |
|--------------------------------------------------|---|----|----|
| Multi-reflector halogen headlights | ■ | ■ | ■ |
| Aerodynamic taillights | ■ | ■ | ■ |
| Sport side sills | | | ■ |
| Fog lights | | S | ■ |
| Dual power outside mirrors | ■ | ■ | |
| Dual power outside mirrors with LED turn signals | | | ■ |
| Active grille shutter | ■ | ■ | ■ |
| Rear roof spoiler | | | ■ |

| Comfort/Convenience | S | SV | SR |
|---------------------------------------------------------------------------------------------------|---|----|----|
| Siri® Eyes Free ⁵ | | ■ | ■ |
| Hands-free Text Messaging Assistant ⁹ | | ■ | ■ |
| RearView Monitor ³ | | ■ | ■ |
| Bluetooth® Hands-free Phone System ⁵ | ■ | ■ | ■ |
| Fine Vision electroluminescent gauges with trip computer | ■ | | |
| Upgraded Fine Vision electroluminescent gauges with trip computer and outside temperature display | | ■ | ■ |
| Air conditioning | ■ | ■ | ■ |
| Integrated Key with remote keyless entry | | ■ | |
| Nissan Intelligent Key® with Push Button Ignition | | S | ■ |
| Power door locks with auto-locking feature | | ■ | ■ |
| Power windows with driver's one-touch auto-down feature | | ■ | ■ |
| Tilt steering column | ■ | ■ | ■ |
| Cruise control | | ■ | ■ |
| Variable intermittent flat-blade windshield wipers | | S | ■ |
| Intermittent rear window wiper | ■ | ■ | ■ |
| Rear window defroster | ■ | ■ | ■ |
| Front map light | ■ | ■ | ■ |
| Cargo area light | ■ | ■ | ■ |
| Front door map pockets with bottle holders | ■ | ■ | ■ |
| Front cup holders in center console | ■ | ■ | ■ |
| Rear cup holders in center console | ■ | ■ | ■ |
| Rear cup holders in rear-seat center armrest | | | ■ |
| Front passenger seatback map pocket | ■ | ■ | ■ |
| Divide-N-Hide® Adjustable Floor | ■ | ■ | ■ |
| Sun visors with vanity mirrors and extensions | ■ | ■ | ■ |
| Digital clock | ■ | ■ | ■ |
| Auxiliary 12-volt DC power outlet | ■ | ■ | ■ |
| Battery saver | ■ | ■ | ■ |

| Seating/Appointments | S | SV | SR |
|-------------------------------------------------------------|---|----|----|
| 4-way manual driver's seat | ■ | | |
| 6-way manual driver's seat | | ■ | ■ |
| Driver's seat armrest | | ■ | ■ |
| 60/40 Split fold-down rear seats | ■ | ■ | ■ |
| Cloth seat trim | ■ | | |
| Upgraded cloth seat trim | | ■ | |
| Suede-like seat fabric with color accents and stitching | | | ■ |
| Cloth door trim accent | | ■ | ■ |
| Leather-wrapped steering wheel | | ■ | |
| Leather-wrapped sport steering wheel | | | ■ |
| Piano Black trim | | ■ | ■ |
| Silver accents on dash and vent rings | ■ | ■ | ■ |
| Silver accents on shift knob and shifter surround | | ■ | ■ |
| Chrome inside door handles and chrome-accented center vents | | ■ | ■ |
| Printed non-woven fabric headliner | | ■ | ■ |

| Audio/Entertainment | S | SV | SR |
|-----------------------------------------------------------------------------------|---|----|----|
| AM/FM/CD audio system with four speakers | ■ | | |
| Premium AM/FM/CD audio system with four speakers and 5.0" color display | | ■ | ■ |
| SiriusXM® Satellite Radio ⁵ | | ■ | ■ |
| Streaming audio via Bluetooth® wireless technology ⁵ | | ■ | ■ |
| MP3/WMA CD playback capability | ■ | ■ | ■ |
| Auxiliary audio input jack ⁶ | ■ | ■ | ■ |
| USB connection port for iPod® interface and other compatible devices ⁶ | | ■ | ■ |
| Radio Data System (RDS) | ■ | ■ | ■ |
| Speed-sensitive volume control | ■ | ■ | ■ |
| Illuminated steering wheel-mounted audio controls | ■ | ■ | ■ |

| Safety/Security | S | SV | SR |
|--------------------------------------------------------------------------------------------------------------------------------------------|---|----|----|
| Nissan Advanced Air Bag System with dual-stage supplemental front air bags with seat-belt and occupant-classification sensors ⁸ | ■ | ■ | ■ |
| Driver and front-passenger seat-mounted side-impact supplemental air bags ⁸ | ■ | ■ | ■ |
| Roof-mounted curtain side-impact supplemental air bags for front- and rear-seat outboard occupant head protection ⁸ | ■ | ■ | ■ |
| Vehicle Dynamic Control (VDC) ⁷ with Traction Control System (TCS) | ■ | ■ | ■ |
| 3-point ALR/ELR passenger seat belt system (ELR for driver) | ■ | ■ | ■ |
| Height-adjustable front head restraints | ■ | ■ | ■ |
| Rear outboard head restraints | ■ | ■ | ■ |
| LATCH System (Lower Anchors and Tethers for Children) | ■ | ■ | ■ |
| Zone Body construction with front and rear crumple zones | ■ | ■ | ■ |
| Pipe-style steel side-door guard beams | ■ | ■ | ■ |
| Tire Pressure Monitoring System (TPMS) ¹⁰ | ■ | ■ | ■ |
| Tire Pressure Monitoring System (TPMS) with Easy-Fill Tire Alert ^{10,11} | | S | ■ |
| Nissan Vehicle Immobilizer System | | S | ■ |

This brochure is intended for general descriptive and informational purposes only. It is subject to change and does not constitute an offer, representation or warranty (express or implied) by Nissan North America, Inc. Interested parties should confirm the accuracy of any information in this brochure as it relates to a vehicle directly with Nissan North America, Inc., before relying on it to make a purchase decision. Nissan North America, Inc., reserves the right to make changes, at any time, without prior notice, in prices, colors, materials, equipment, specifications, and models and to discontinue models or equipment. Due to continuous product development and other pre- and post-production factors, actual vehicle, materials and specifications may vary from this brochure. Some vehicles shown with optional equipment. See the actual vehicle for complete accuracy. Availability and delivery times for particular models or equipment may vary. Specifications, options and accessories may differ in Hawaii, U.S. territories and other countries. For additional information on availability, options or accessories, see your Nissan dealer or contact Nissan North America, Inc. At NissanUSA.com, you'll find virtual product demonstrations, a way to "build your own Nissan," a dealer locator, and more information about key Nissan support services. Or if you'd prefer, call 1-800-NISSAN-3 for answers to specific questions about Versa® Note® or any other Nissan vehicle. The Nissan names, logos, product names, feature names, and slogans are trademarks owned by or licensed to Nissan Motor Co. Ltd. and/or its North American subsidiaries. Other trademarks and trade names are those of their respective owners. **Always wear your seat belt, and please drive responsibly.** ©2017 Nissan North America, Inc. '18 Versa® Note.® 1820706 N-09/17-60K-CGI

DIMENSIONS/CAPACITIES/WEIGHTS/MPG

| Dimensions - Inches | |
|--------------------------|-----------|
| Exterior | |
| Wheelbase | 102.4 |
| Overall length | 163.7 |
| Overall width | 66.7 |
| Overall height | 60.5 |
| Track width (front/rear) | 58.3/58.5 |

| Aerodynamics - Cd | S | SV | SR |
|-------------------|-------|-------|-------|
| Drag coefficient | 0.298 | 0.298 | 0.300 |

| Interior (front/rear) | | | |
|-----------------------|-----------|---------------|-----------|
| Head room | 40.8/38.0 | Hip room | 48.5/48.8 |
| Leg room | 41.3/38.3 | Shoulder room | 51.7/51.9 |

| Capacities | |
|---------------------------------------------|------|
| Seating capacity | 5 |
| Interior passenger volume (cu. ft.) | 94.1 |
| Cargo volume with rear seats up (cu. ft.) | 18.8 |
| Cargo volume with rear seats down (cu. ft.) | 38.3 |
| Fuel tank (gals.) | 10.8 |

| Curb Weights - Lbs. | | | |
|---------------------|-------|-------|-------|
| | S | SV | SR |
| Xtronic CVT* | 2,461 | 2,494 | 2,534 |

| 2018 EPA Fuel Economy Estimates (City/Highway/Combined) | | | |
|---------------------------------------------------------|----------|----------|----------|
| | S | SV | SR |
| Xtronic CVT* | 31/34/39 | 31/34/39 | 31/34/39 |

* Actual mileage may vary with driving conditions - use for comparison only.

NISSAN ROADSIDE ASSISTANCE

Your peace of mind is on us. For 36 months or 36,000 miles, whichever comes first, your new Nissan is covered for the following:⁵

- Flat-tire changes
- Trip Interruption benefits
- Vehicle lockouts
- Emergency fuel delivery
- Jump starts

Follow Nissan on:



visit NissanUSA.com/versanote

PRINTED IN POLAND