

## NISSAN INTELLIGENT MOBILITY™

Nissan Intelligent Mobility guides everything we do. We're using new technologies to transform cars from mere driving machines into assistants. Together the journey is more confident, connected, and exciting. Whether it's cars that assist in the driving task, or highways that charge your EV as you go along, it's all in the very near future. And it's a future already taking shape in the Nissan you drive today.

### SEE VERSA® NOTE® COME TO LIFE

Go to [NissanUSA.com](http://NissanUSA.com) and find an interactive brochure for Versa Note and every Nissan in the lineup. Available on desktop, smartphone, or tablet, it's the full product story – including demos, videos, and complete info on trims, colors, and accessories.



Innovation  
that excites

2019  
**VERSA® NOTE®**



<sup>1</sup>Cargo and load capacity limited by weight and distribution. Always secure cargo. <sup>2</sup>2018 EPA Fuel Economy Estimates 31/34/39 [city/highway/combined]. Actual mileage may vary with driving conditions. Use for comparison only. 2019 estimates not available at time of printing. <sup>3</sup>Availability of features varies by model year, model, trim, and package. <sup>4</sup>Feature availability is dependent on vehicle model, trim level, packaging and options. Compatible connected device may be required and feature availability may be dependent on device's capability. Refer to connected device's owner's manual for details. Late availability for some features. **Driving is serious business and requires your full attention.** Only use features and connected devices when safe and legal to do so. Some features, including automatic crash notification and SOS, are dependent upon the telematics device being in operative condition, its ability to connect to a wireless network, compatible wireless network availability, navigation map data and GPS satellite signal strength may vary and may not be available in all areas or at all times. Services and features may not function if cellular network is unavailable, restricted, or terminated. Nissan and its partners or agents are not responsible for associated costs or other third party changes that may be required for continued operation due to cellular network unavailability, restriction, or termination (including equipment replacements/upgrades, if available, or roaming charges on alternative networks). Technology is evolving, and changes by independent companies are not within Nissan's or its partners' or agents' control. Enrollment, owner consent, personal identification number (PIN), and subscription agreement may be required to receive full suite of features and services. Trial periods (if applicable) begin on the date of vehicle purchase or lease of a new Nissan. Trial periods may be subject to change at any time and may be subject to early termination without notice. Required subscriptions may be sold separately for each available feature or service after trial period ends, and may continue until you call service provider to cancel. Installation costs, one-time activation fee, other fees and taxes may apply. Fees and programming subject to change. Feature may be subject to age restrictions in some areas. Subscriptions governed by service provider's subscription agreement, terms and conditions and privacy statements available at service provider's website. Text rates or data usage may apply. The Nissan names, logos and slogans are trademarks owned by or licensed to Nissan Motor Co. Ltd. or its North American subsidiaries. Other trademarks and trade names are those of their respective owners. For important safety information, system limitations, and additional operating and feature information, see dealer, Owner's Manual, or [NissanUSA.com/connect/important-information](http://NissanUSA.com/connect/important-information). Terms and conditions of Subscriber Agreement apply. NissanConnect EV features are provided by Nissan North America, Sirius XM Connected Vehicle Services Inc. ("Sirius XM") partners with Nissan North America to provide NissanConnect Services powered by SiriusXM. All stated terms, disclosures and limitations of liability associated with connected vehicle services extend to Sirius XM and its affiliate, Sirius XM Radio Inc. SiriusXM is a registered trademark of Sirius XM Radio Inc. <sup>5</sup>Never program while driving. GPS mapping may not be detailed in all areas or reflect current road status. <sup>6</sup>Extra cost option. <sup>7</sup>RearView Monitor may not detect every object and does not eliminate blind spots or warn of moving objects. See Owner's Manual for safety information. <sup>8</sup>Use Hands Free Text Messaging when parked in a safe location. If you must use while driving, monitor traffic conditions and keep both hands on the steering wheel to prevent collisions. Compatible device required. Message and data rates may apply. <sup>9</sup>Driving is serious business and requires your full attention. If you have to use the connected device while driving, exercise extreme caution at all times so full attention may be given to vehicle operation. <sup>10</sup>Vehicle Dynamic Control cannot prevent collisions due to abrupt steering, carelessness, or dangerous driving technique. It should remain on when driving, except when freeing the vehicle from mud or snow. See Owner's Manual for safety information. <sup>11</sup>Air bags are only a supplemental restraint system. Always wear your seat belt. Rear-facing child restraints should not be placed in the front-passenger's seat. All children 12 and under should ride in the rear seat properly secured in child restraints, booster seats, or seat belts according to their size. Air bags will only inflate in certain accidents. See Owner's Manual for safety information. <sup>12</sup>Tire Pressure Monitoring System is not a substitute for regular tire pressure checks. See Owner's Manual for safety information. <sup>13</sup>Vehicle must be on for the Easy-Fill Tire Alert to operate. <sup>14</sup>Genuine Nissan Accessories are covered by Nissan's Limited Warranty on Genuine Nissan Replacement Parts, Genuine NISMO® S-Tune Parts, and Genuine Nissan Accessories for the longer of 12 months/12,000 miles (whichever occurs first) or the remaining period under the 3-year/36,000-mile (whichever occurs first) Nissan New Vehicle Limited Warranty. Terms and conditions apply. See dealer, Warranty Information Booklet, or [parts.NissanUSA.com](http://parts.NissanUSA.com) for details. <sup>15</sup>Brake Assist cannot prevent all collisions and may not provide warning or braking in all conditions. Driver should monitor traffic conditions and brake as needed to prevent collisions. See Owner's Manual for safety information. <sup>16</sup>For a period of 36 months/36,000 miles from the date the vehicle is delivered to the first retail buyer or otherwise put into use, whichever is earlier. Android Auto™ is a trademark of Google, Inc. Apple CarPlay™ and Apple Maps are trademarks of Apple, Inc. Bluetooth® is a registered trademark of Bluetooth SIG, Inc. Facebook® is a registered trademark of Facebook, Inc. Google Maps™ and Google Play™ are trademarks of Google Inc. iPod® is a registered trademark of Apple, Inc. All rights reserved. iPod® or other external device not included. Pandora® is a registered trademark of Pandora Media. Rockford Fosgate® is a registered trademark of Rockford Corporation. Siri® and Siri® Eyes Free are registered trademarks of Apple, Inc. The Sirius®, XM®, and SiriusXM® names and all related marks and logos are trademarks of Sirius XM Radio Inc. All other trademarks are the property of their respective owners. A Twitter® is a registered trademark of Twitter, Inc. YouTube® is a registered trademark of Google, Inc. This brochure is intended for general descriptive and informational purposes only. It is subject to change and does not constitute an offer, representation or warranty (express or implied) by Nissan North America, Inc. Interested parties should confirm the accuracy of any information in this brochure as it relates to a vehicle directly with Nissan North America, Inc., before relying on it to make a purchase decision. Nissan North America, Inc., reserves the right to make changes, at any time, without prior notice, in prices, colors, materials, equipment, specifications, and models and to discontinue models or equipment. Due to continuous product development and other pre- and post-production factors, actual vehicle, materials and specifications may vary from this brochure. Some vehicles shown with optional equipment. See the actual vehicle for complete accuracy. Availability and delivery times for particular models or equipment may vary. Specifications, options and accessories may differ in Hawaii, U.S. territories and other countries. For additional information on availability, options or accessories, see your Nissan dealer or contact Nissan North America, Inc. At [NissanUSA.com](http://NissanUSA.com), you'll find virtual product demonstrations, a way to "build your own Nissan," a dealer locator, and more information about key Nissan support services. Or if you'd prefer, call 1-800-NISSAN-3 for answers to specific questions about Versa® Note® or any other Nissan vehicle. The Nissan names, logos, product names, feature names, and slogans are trademarks owned by or licensed to Nissan Motor Co. Ltd. and/or its North American subsidiaries. Other trademarks and trade names are those of their respective owners. **Always wear your seat belt, and please drive responsibly.** ©2018 Nissan North America, Inc. 19 Versa® Note.® 1922543-N-7/18-60K-CGI

Grab your friends and their gear – you've got the room. Forget the itinerary, and play it by ear with hands-free calling and music you can change on the fly. Pit stop: catch that show downtown. Back into that tight spot with tech that helps make parking a breeze. The 2019 Nissan Versa® Note.® Tech that moves you.



Nissan Versa® Note® SR shown in Deep Blue Pearl.

## VERSA® NOTE® COLOR STUDIO®

With Versa Note Color Studio, you can make your Versa Note one of a kind. Choose from a selection of accents and finishers, including side mirror caps, door handle covers, a rear roof spoiler, and more, along with color-coordinated 15" alloy wheels. Pick one or more accents. Choose one or all of the colors.



Nissan has taken care to ensure that the digital color swatches presented here are the closest possible representation of actual vehicle colors. Swatches may vary slightly due to viewing light or screen quality. Please see the actual vehicle and colors at your dealer.

## GO THE DISTANCE

Wouldn't it be cool if you could get up to 39 MPG highway in a roomy, comfortable car that's lots of fun to drive? With Versa Note, you can. We got there by developing everything from exterior aerodynamics that whisper through the wind, to an advanced 1.6-liter 4-cylinder engine, to a virtually gearless Xtronic CVT® (Continuously Variable Transmission) that maximizes efficiency and performance.<sup>2</sup>

Continuously Variable Transmission (CVT) / Aerodynamic design

UP TO  
**39**  
MPG HIGHWAY<sup>2</sup>

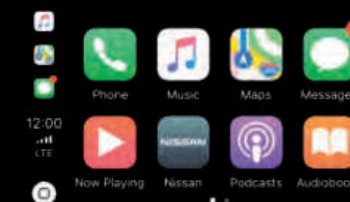


## DIVIDE-N-HIDE® ADJUSTABLE FLOOR

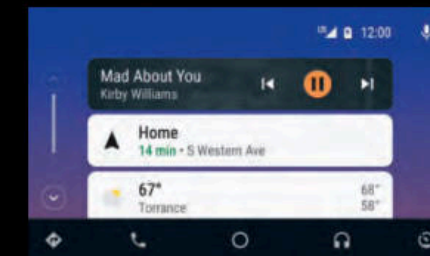
When living in the moment is all part of the plan, Versa Note has your cargo needs covered with the super-versatile available Divide-N-Hide® Adjustable Floor. Lower the floor to accommodate taller items, or lift it up to find a convenient hiding place. Plus, the rear 60/40 split seats let you bring friends and oversized items. Or fold down both sides to create a flat cargo area.<sup>1</sup>

## NISSAN INTELLIGENT MOBILITY™ SEAMLESS CONNECTIVITY

With Nissan Intelligent Mobility, Versa Note lets you stay connected and keep your hands on the wheel. Equipped with available Siri® voice control, Apple CarPlay™ brings on board your contacts, the music apps you love, Apple Maps,™ and more. Android Auto™ gets you where you're going with Google Maps™ as a guide and Google Play™ Music providing the soundtrack along the way. You just need to say, "Hey Google."<sup>3, 4, 5</sup>



Works with  
Apple CarPlay

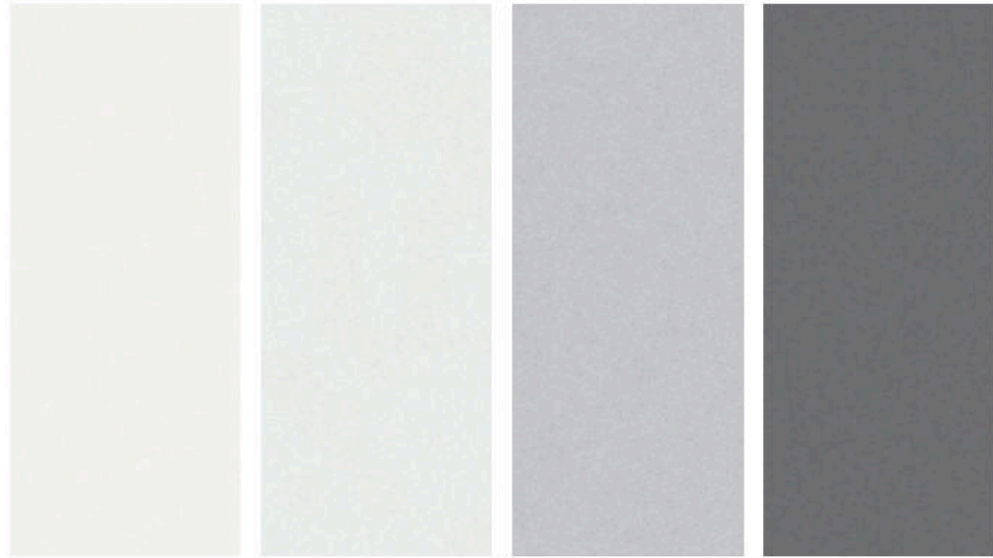


androidauto



Nissan Versa® Note® SR shown in Charcoal Cloth with accessory Interior Accent Lighting.

CHOOSE YOUR COLOR



Fresh Powder

Aspen White TriCoat<sup>6</sup>

Brilliant Silver Metallic

Gun Metallic

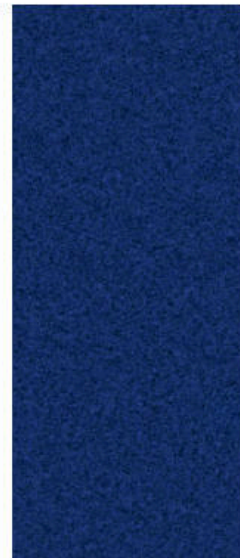
S SV SR

S SV SR

S SV SR

S SV SR

CHARCOAL CLOTH



Cayenne Red Metallic

Deep Blue Pearl

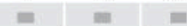
Super Black

S SV SR

S SV SR

S SV SR

CHARCOAL CLOTH



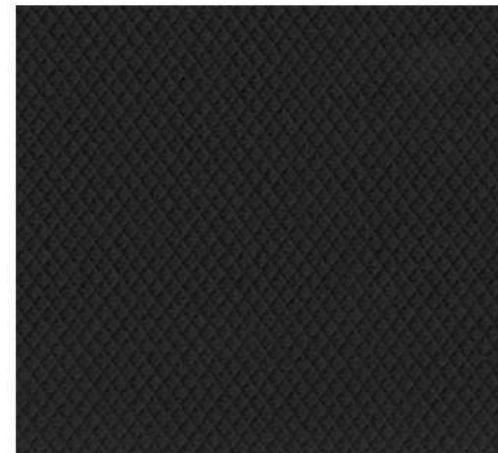
■ Standard

Nissan has taken care to ensure that the color swatches presented here are the closest possible representations of actual vehicle colors. Swatches may vary slightly due to the printing process and whether viewed in daylight, fluorescent or incandescent light. Please see the actual colors at your dealer.

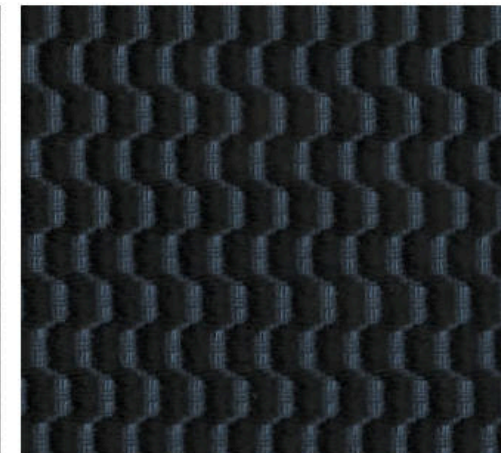
CHOOSE YOUR INTERIOR



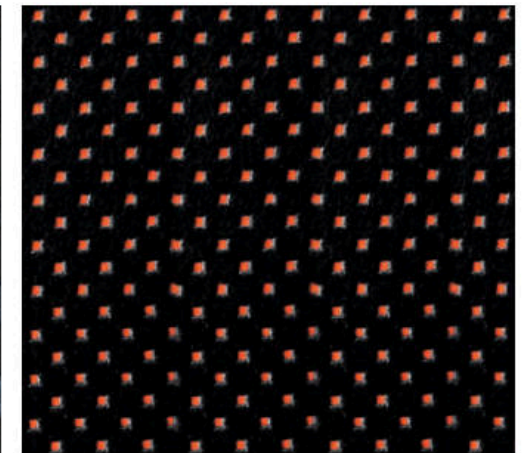
Versa<sup>®</sup> Note<sup>®</sup> SR shown in Charcoal Cloth.



Charcoal Cloth  
S



Charcoal Cloth  
SV



Charcoal Cloth  
SR

## CHOOSE YOUR TRIM LEVEL

**S**

- 1.6-liter 4-cylinder engine
- Xtronic CVT® (Continuously Variable Transmission)
- Active grille shutter
- 15" x 5.5" steel wheels with wheel covers
- P185/65HR15 all-season low rolling resistance tires
- RearView Monitor<sup>7</sup>
- Dual power outside mirrors
- Air conditioning
- Fine Vision electroluminescent gauges
- Cup holders in center console
- 60/40 Split fold-down rear seats
- 7" Touch-screen display AM/FM audio system
- Bluetooth® Hands-free Phone System<sup>4</sup>

- Hands-free Text Messaging Assistant<sup>8</sup>
- Streaming audio via Bluetooth<sup>4,6</sup>
- Siri® Eyes Free<sup>4</sup>
- Illuminated steering wheel-mounted audio controls
- USB connection port for compatible devices<sup>9</sup>
- 4-wheel Anti-lock Braking System (ABS)
- Vehicle Dynamic Control (VDC)<sup>10</sup> with Traction Control System (TCS)
- Nissan Advanced Air Bag System<sup>11</sup>
- Sun visors with vanity mirrors and extensions
- Variable intermittent flat-blade windshield wipers



**SV** INCLUDES S EQUIPMENT PLUS:

- Upgraded Fine Vision electroluminescent gauges with trip computer and outside temperature display
- Integrated Key with remote keyless entry
- Power windows and door locks
- Cruise control
- Divide-N-Hide® Adjustable Floor<sup>1</sup>
- 6-way manual driver's seat with armrest and upgraded cloth seat and door trim
- Leather-wrapped steering wheel
- Silver accents on dash and vent rings
- Silver accents on shifter and surround
- Chrome inside door handles and chrome-accented center vent



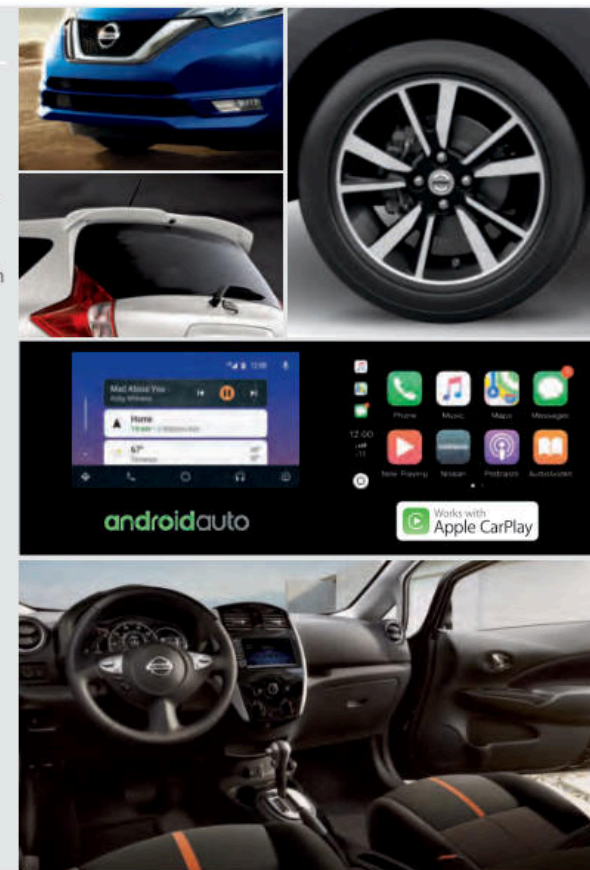
### AVAILABLE PACKAGE:

- Special Edition Package

**SR** INCLUDES SV EQUIPMENT PLUS:

- 16" x 6.0" machine-finished split 5-spoke aluminum-alloy wheels
- P195/55HR16 all-season low rolling resistance tires
- Fog lights
- Sport side sills
- Dual power outside mirrors with LED turn signals
- Rear roof spoiler
- Nissan Intelligent Key<sup>8</sup> with Push Button Ignition
- NissanConnect<sup>®</sup> 7" touch-screen display<sup>4</sup>

- Apple CarPlay™<sup>4</sup>
- Android Auto™<sup>4</sup>
- SiriusXM® Radio<sup>4</sup>
- Piano Black trim
- Suede-like seat fabric with color accents and stitching
- Leather-wrapped sport steering wheel
- Rear-seat fold-down center armrest with cup holders
- Tire Pressure Monitoring System (TPMS) with Easy-Fill Tire Alert<sup>12, 13</sup>



## CHOOSE YOUR ACCESSORIES



Every Genuine Nissan Accessory is custom-fit, custom-designed and durability-tested. Each one is backed by Nissan's 3-year/36,000-mile (whichever occurs first) limited warranty (if installed by dealer at the time of purchase), and can be financed when installed by dealer at time of purchase.<sup>14</sup>

### A. Interior Accent Lighting

Bring a bit of the club along for the drive.

### B. Rockford Fosgate® Premium Audio System

Take your sound to the next level.

### C. Illuminated Kick Plates

Let your door sills play dress-up.

### D. Divide-N-Hide® Adjustable Floor<sup>1</sup>

Stack, separate, and stash.

### E. Frameless Auto-dimming Rearview Mirror with Universal Remote

Car and home, in harmony.

### F. Nissan WiFi & Apps<sup>4</sup>

Connected passengers are happy passengers.

### G. All-season Floor Mats

Bring on the weather.

### H. Rear Cargo Cover and Carpeted Cargo Mat (sold separately)<sup>1</sup>

Think of them as a secret fortress for your cargo.

#### Additional Accessories:

- Chrome Door Handle Accents
- Chrome Rear Hatch Accent
- 15" Black Aluminum-alloy Wheels
- Carpeted Floor Mats
- Splash Guards
- Portable Cargo Organizer<sup>1</sup>
- Stainless Steel Exhaust Finisher
- And More



## GENUINE NISSAN ACCESSORIES TURN BRAND-NEW INTO ALL YOU

For more information and to shop online for Versa® Note® Genuine Nissan Accessories, go to [bit.ly/19versanote-estore](http://bit.ly/19versanote-estore)



To see Genuine Nissan Accessories in action, go to [bit.ly/19versanote\\_gnavideos](http://bit.ly/19versanote_gnavideos)

Nissan Versa® Note® SV shown in Super Black and Brilliant Silver Metallic with Versa Note Color Studio® 15" Aluminum-alloy Wheels, Side Mirror Covers, Door Handle Covers, Rear Roof Spoiler, Rear Hatch Accent, Stainless Steel Exhaust Finisher, and Rearview Mirror Cover.

## SPECIFICATIONS

Engine	S	SV	SR
1.6-liter DOHC 16-valve 4-cylinder engine	■	■	■
— Horsepower – 109 hp @ 6,000 rpm			
— Torque – 107 lb-ft @ 4,400 rpm			
Dual injector system	■	■	■
Continuously Variable Valve Timing Control System (CVTCS) on intake and exhaust valves	■	■	■
Nissan Direct Ignition System	■	■	■
Platinum-tipped spark plugs	■	■	■
Electronic drive-by-wire throttle	■	■	■

Drivetrain	S	SV	SR
Front engine/Front-Wheel Drive	■	■	■
Xtronic CVT® (Continuously Variable Transmission)	■	■	■

Brakes	S	SV	SR
Vented front disc/rear drum brakes	■	■	■
4-wheel Anti-lock Braking System (ABS)	■	■	■
Electronic Brake force Distribution (EBD)	■	■	■
Brake Assist <sup>15</sup>	■	■	■

Suspension/Steering	S	SV	SR
Independent strut front suspension with stabilizer bar	■	■	■
Torsion beam rear axle with integrated stabilizer bar	■	■	■
Vehicle-speed-sensitive electric power steering	■	■	■

Wheels/Tires	S	SV	SR
15" x 5.5" steel wheels with wheel covers	■	■	
15" x 5.5" split 5-spoke aluminum-alloy wheels		S	
16" x 6.0" machine-finished aluminum-alloy wheels			■
P185/65HR15 all-season low rolling resistance tires	■	■	
P195/55HR16 all-season low rolling resistance tires			■

Exterior Features	S	SV	SR
Multi-reflector halogen headlights	■	■	■
Aerodynamic taillights	■	■	■
Sport side sills			■
Fog lights		S	■
Dual power outside mirrors	■	■	
Dual power outside mirrors with LED turn signals			■
Active grille shutter	■	■	■
Rear roof spoiler			■

Comfort/Convenience	S	SV	SR
Siri® Eyes Free <sup>4</sup>	■	■	■
Hands-free Text Messaging Assistant <sup>8</sup>	■	■	■
RearView Monitor <sup>7</sup>	■	■	■
Bluetooth® Hands-free Phone System <sup>4</sup>	■	■	■
Fine Vision electroluminescent gauges with trip computer	■		
Upgraded Fine Vision electroluminescent gauges with trip computer and outside temperature display		■	■
Air conditioning	■	■	■
Integrated Key with remote keyless entry		■	
Nissan Intelligent Key® with Push Button Ignition		S	■
Power door locks with auto-locking feature		■	■
Power windows with driver's one-touch auto-down feature		■	■
Tilt steering column	■	■	■
Cruise control		■	■
Variable intermittent flat-blade windshield wipers	■	■	■
Intermittent rear window wiper	■	■	■
Rear window defroster	■	■	■
Front map light	■	■	■
Cargo area light	■	■	■
Front door map pockets with bottle holders	■	■	■
Front cup holders in center console	■	■	■
Rear cup holders in center console	■	■	■
Rear cup holders in rear-seat center armrest			■
Front passenger seatback map pocket	■	■	■
Divide-N-Hide® Adjustable Floor <sup>3</sup>	■	■	■
Sun visors with vanity mirrors and extensions	■	■	■
Digital clock	■	■	■
Auxiliary 12-volt DC power outlet	■	■	■
Battery saver	■	■	■

Seating/Appointments	S	SV	SR
4-way manual driver's seat	■		
6-way manual driver's seat		■	■
Driver's seat armrest		■	■
60/40 Split fold-down rear seats	■	■	■
Cloth seat trim	■		
Upgraded cloth seat trim		■	
Suede-like seat fabric with color accents and stitching			■
Cloth door trim accent		■	■
Leather-wrapped steering wheel		■	
Leather-wrapped sport steering wheel			■
Piano Black trim		S	■
Silver accents on dash and vent rings		■	■
Silver accents on shifter surround		■	■

Audio/Entertainment	S	SV	SR
Chrome inside door handles and chrome-accented center vents		■	■
Printed non-woven fabric headliner		■	■
7" touch-screen display AM/FM audio system with four speakers	■	■	■
NissanConnect® 7" touch-screen display <sup>4</sup>		S	■
Apple CarPlay™ <sup>4</sup>		S	■
Android Auto™ <sup>4</sup>		S	■
SiriusXM® Radio <sup>4</sup>		S	■
Streaming audio via Bluetooth® wireless technology <sup>4</sup>	■	■	■
Auxiliary audio input jack <sup>9</sup>	■	■	■
USB connection port for compatible devices <sup>9</sup>	■	■	■
Radio Data System (RDS)	■	■	■
Speed-sensitive volume control	■	■	■
Illuminated steering wheel-mounted audio controls	■	■	■

Safety/Security	S	SV	SR
Nissan Advanced Air Bag System with dual-stage supplemental front air bags with seat-belt and occupant-classification sensors <sup>11</sup>	■	■	■
Driver and front-passenger seat-mounted side-impact supplemental air bags <sup>11</sup>	■	■	■
Roof-mounted curtain side-impact supplemental air bags for front- and rear-seat outboard occupant head protection <sup>11</sup>	■	■	■
Vehicle Dynamic Control (VDC) <sup>10</sup> with Traction Control System (TCS)	■	■	■
3-point ALR/ELR passenger seat belt system (ELR for driver)	■	■	■
Height-adjustable front head restraints	■	■	■
Rear outboard head restraints	■	■	■
LATCH System (Lower Anchors and Tethers for CHildren)	■	■	■
Zone Body construction with front and rear crumple zones	■	■	■
Pipe-style steel side-door guard beams	■	■	■
Tire Pressure Monitoring System (TPMS) <sup>12</sup>	■	■	
Tire Pressure Monitoring System (TPMS) with Easy-Fill Tire Alert <sup>12, 15</sup>		S	■
Nissan Vehicle Immobilizer System		S	■

## DIMENSIONS/CAPACITIES/WEIGHTS/MPG

Dimensions - Inches	
<b>Exterior</b>	
Wheelbase	102.4
Overall length	163.7
Overall width	66.7
Overall height	60.5
Track width (front/rear)	58.3/58.5

Aerodynamics - Cd	S	SV	SR
Drag coefficient	0.298	0.298	0.300

Interior (front/rear)			
Head room	40.8/38.0	Hip room	48.5/48.8
Leg room	41.3/38.3	Shoulder room	51.7/51.9

Capacities	
Seating capacity	5
Interior passenger volume (cu. ft.)	94.1
Cargo volume with rear seats up (cu. ft.)	18.8
Cargo volume with rear seats down (cu. ft.)	38.3
Fuel tank (gals.)	10.8

Curb Weights - Lbs.			
	S	SV	SR
Xtronic CVT	2,474	2,491	2,526

2018 EPA Fuel Economy Estimates (City/Highway/Combined) <sup>2</sup>			
	S	SV	SR
Xtronic CVT	31/34/39	31/34/39	31/34/39

## NISSAN ROADSIDE ASSISTANCE

Your peace of mind is on us. For 36 months or 36,000 miles, whichever comes first, your new Nissan is covered for the following:<sup>16</sup>

- Flat-tire changes
- Trip Interruption benefits
- Jump starts
- Vehicle lockouts
- Emergency fuel delivery

Follow Nissan on:



visit [NissanUSA.com/versanote](http://NissanUSA.com/versanote)

PRINTED IN POLAND